

AFIT/GOR/ENS/98M-14

A Value Focus Thinking Approach
to the Academic Course Scheduling Problem

Knighton, Shane A, 1Lt/O-2

Report Documentation Page

Form Approved
OMB No. 0704-0188

Public reporting burden for the collection of information is estimated to average 1 hour per response, including the time for reviewing instructions, searching existing data sources, gathering and maintaining the data needed, and completing and reviewing the collection of information. Send comments regarding this burden estimate or any other aspect of this collection of information, including suggestions for reducing this burden, to Washington Headquarters Services, Directorate for Information Operations and Reports, 1215 Jefferson Davis Highway, Suite 1204, Arlington VA 22202-4302. Respondents should be aware that notwithstanding any other provision of law, no person shall be subject to a penalty for failing to comply with a collection of information if it does not display a currently valid OMB control number.

1. REPORT DATE 1998		2. REPORT TYPE N/A		3. DATES COVERED -	
4. TITLE AND SUBTITLE A Value Focus Thinking Approach to the Academic Course Scheduling Problem				5a. CONTRACT NUMBER	
				5b. GRANT NUMBER	
				5c. PROGRAM ELEMENT NUMBER	
6. AUTHOR(S)				5d. PROJECT NUMBER	
				5e. TASK NUMBER	
				5f. WORK UNIT NUMBER	
7. PERFORMING ORGANIZATION NAME(S) AND ADDRESS(ES) Air University Press Maxwell AFB, AL 36112-6615				8. PERFORMING ORGANIZATION REPORT NUMBER	
9. SPONSORING/MONITORING AGENCY NAME(S) AND ADDRESS(ES)				10. SPONSOR/MONITOR'S ACRONYM(S)	
				11. SPONSOR/MONITOR'S REPORT NUMBER(S)	
12. DISTRIBUTION/AVAILABILITY STATEMENT Approved for public release, distribution unlimited					
13. SUPPLEMENTARY NOTES					
14. ABSTRACT					
15. SUBJECT TERMS					
16. SECURITY CLASSIFICATION OF:			17. LIMITATION OF ABSTRACT UU	18. NUMBER OF PAGES 136	19a. NAME OF RESPONSIBLE PERSON
a. REPORT unclassified	b. ABSTRACT unclassified	c. THIS PAGE unclassified			

Disclaimer

The views expressed in this academic research paper are those of the author(s) and do not reflect the official policy or position of the US government or the Department of Defense. In accordance with Air Force Instruction 51-303, it is not copyrighted, but is the property of the United States government.

Acknowledgements

I am grateful to my thesis advisors, LtC Jack Jackson and Dr Dick Deckro. Thank you for your support and commitment to my thesis research. You both exemplify professionalism and are a tremendous example to young Air Force officers. LtC Jackson, thank you for your steadfast resolve, and for always taking the time to share your Air Force experiences and career advice. Dr Deckro, thank you for your injections of levity and for providing me with a source of expertise in Operations Research.

On a more personal note, I would like to thank the many close friends I have made during my time at AFIT. I will miss the extra studies in probability; who knew statistics could be so much fun. I would also like to thank Dale and J.D., who always gave the opportunity to get my exercise. My friends, you have made the rigors of AFIT an enjoyable experience.

I would also like to thank my friends and family at home. You have always given me the utmost support and inspiration. I know I can climb any mountain with you on my side.

Of course, I want to thank my wife, Michelle. Without your encouragement I would never have been able to make it. Thank you for enduring the cold winters of Ohio. I know I can count on you when things get tough, you are always there for me.

I would also like to thank God, through who all things are possible.

—Shane A. Knighton

Table Of Contents

	<i>Page</i>
DISCLAIMER	ii
ACKNOWLEDGEMENTS	iii
LIST OF FIGURES.....	vi
LIST OF TABLES	vii
ABSTRACT	viii
INTRODUCTION.....	3
Survey Of Literature	4
Mixed Integer Programming Approach.....	5
Cost Coefficients.....	7
VFT Theoretical Model	8
Value Focused Thinking.....	10
Multiple Objective Value Analysis.....	11
Methodology	13
Influence Diagram	13
Value Hierarchy.....	14
Mixed Integer Program.....	19
Solicitation of Preferences	21
MIP Formulation.....	23
Decision Support System.....	26
RESULTS	27
Iterative Approach to a Complete Schedule	34
Conclusions.....	35
APPENDIX A: COMPLETE 1998 SPRING QUARTER SCHEDULE.....	39
APPENDIX B: ELECTRONIC QUESTIONNAIRE SOURCE CODE.....	42
APPENDIX C: PROBLEM GENERATOR SOURCE CODE.....	46
APPENDIX D: OSL OUTPUT FOR “EQUAL WEIGHTING” SCHEDULING VARIATION.....	61
APPENDIX E: OSL OUTPUT FOR “NUMBER OF COURSES WEIGHTING” SCHEDULING VARIATION	64
APPENDIX F: OSL OUTPUT FOR “NUMBER OF STUDENTS WEIGHTING” SCHEDULING VARIATION	67

APPENDIX G: OSL OUTPUT FOR “NUMBER OF COURSE WITH LECTURES GIVEN WEIGHTING” SCHEDULING VARIATION.....	70
APPENDIX H: EDSSS USER MANUAL	73
APPENDIX I: PREFERENCE TABLE FOR SPRING QUARTER 98 SCHEDULE	86
APPENDIX J: ED PLANS QUERY FOR SPRING QUARTER 98 SCHEDULE.....	90
BIBLIOGRAPHY	128

List Of Figures

Figure 1. Decision Analysis Process Flowchart (Clemens, 1996)	9
Figure 2. Value Hierarchy Example.....	11
Figure 3. Influence Diagram	14
Figure 4. Value Hierarchy.....	15
Figure 5. Single Dimensional Value Function.....	18
Figure 6. Overall Value of Schedules	30
Figure 7. Departmental Value of Schedules.....	31
Figure 8. Percentage of 1 st Day/Time Preferences Accommodated.....	32
Figure 9. Comparison of Neutral Day/Time Assignments to Non-Respondents.....	33
Figure 10. Classroom Utilization for Completed Schedule	34

List Of Tables

	<i>Page</i>
Table 1. Day/Time Scenarios	20
Table 2. Room Groups	21
Table 3. Time Ranges.....	22
Table 4. Departmental Weightings.....	29
Table 5. Summary of Processing Times.....	29

Abstract

In 1997, the School of Engineering of the United States Air Force Institute of Technology began exploring ways of automating the academic course scheduling process. The administration desired an expedient approach for course scheduling which supports the institute's mission of "providing scientific and technological education" to officers from all branches of military service, as well as international military forces. The scheduling approach needed to be flexible, efficient, and represent the institute's values and principles. Decision Analysis (DA) and specifically, Value Focused Thinking (VFT), is used to decompose the complex problem of academic course scheduling and determine the factors that are important in a schedule. An MS Excel based Decision Support System generates a Mixed Integer Program (MIP). The MIP formulation combines the institute's goals with facility constraints, faculty preferences, student preferences, and administration guidance to develop an academic course schedule representative of the institute's values.

Chapter 1

Introduction

The research documented in this thesis is in response to the Office of Academic Operations of the School of Engineering of the Air Force Institute of Technology's request for support. The staff of the Office of Academic Operations is responsible for scheduling the courses offered by the School of Engineering on a quarterly basis. In an effort to reduce the amount of time required to produce a schedule, an efficient approach to academic course scheduling was sought. Decision Analysis and Value Focused Thinking (VFT) were used to decompose the course scheduling problem and determine the important issues inherent in a quality schedule.

Our goal is to provide the Office of Academic Operations with a tool that will efficiently solve the academic course scheduling problem for the School of Engineering and reduce the time and effort expended by the staff in the production of a schedule. We have done this through the development of an Educational Decision Support Scheduling System (EDSSS). EDSSS combines an MS Excel based spreadsheet and suite of Visual Basic Modules, with the IBM Mixed Integer Solver named Optimization Subroutine Library (OSL).

The remainder of this thesis explains the theoretical background and methodology used in the development of EDSSS. Textual copies of the Visual Basic Modules and a

user manual are included. This thesis is organized so that Chapter 2 is a stand-alone article on our research, suitable for submission to an academic journal. Chapter 3 outlines some obvious extensions to this work.

Appendix A contains the completed schedule for the 1998 Spring Quarter for the School of Engineering of AFIT. Appendix B provides the Visual Basic source code for the electronic questionnaire used in EDSSS, while Appendix C gives the Visual Basic source code for the modules used by the mixed integer problem generator portion of EDSSS. Appendices D through G show the results for each of the four scheduling variations obtained from IBM's mixed integer solver, Optimization Subroutine Library (OSL). Appendix H provides a user manual for EDSSS. Finally, Appendix I and J contain the Preference Table and Ed Plan Query used by EDSSS in the development of the Spring Quarter 98 schedule.

Chapter 2

Introduction

The School of Engineering (EN) of the United States Air Force Institute of Technology (AFIT), located on Wright-Patterson Air Force Base, Ohio, provides ABET accredited post-graduate education to officers in the U.S. Air Force, along with officers from other branches of service and international military forces. The school of engineering has an enrollment of approximately 350 students, and is comparable in size to a small civilian college or secondary school. AFIT's School of Engineering is divided into six departments, each under the direction of a Department Head. The six departments include Aeronautics and Astronautics (ENY), Electrical and Computer Engineering (ENG), Engineering and Environmental Management (ENV), Mathematics and Statistics (ENC), Operational Sciences (ENS), and Engineering Physics (ENP).

Academic course scheduling at the School of Engineering of the United States Air Force Institute of Technology is largely a manual process. The institute's six departments propose days and times for the courses to be offered by that department in the upcoming academic quarter. Students create Education Plans specifying enrollment in courses for the upcoming quarter. The office of Academic Operations gathers the departmental proposals and is challenged with combining the offered times and student education plans into a working course schedule. A working schedule assigns courses to

days, times, and rooms. The schedule must comply with all administrative policy as well as facility constraints. The staff of the office of Academic Operations performs this task by hand, with a working schedule often requiring multiple revisions and over 65 person-hours.

This paper documents a new approach to academic course scheduling for the School of Engineering of AFIT. The objectives of the research are: (1) to quantify the factors and issues important to EN in a course schedule, (2) to find metrics that can measure how well a schedule addresses the important factors, (3) to create a Decision Support System that will aid the offices of Academic Operations in scheduling future quarters, and (4) to develop a efficient means of solving the academic course scheduling problem for the School of Engineering.

The remainder of this paper is organized in the following manner. The survey of academic course scheduling literature is presented followed by the theoretical background for the Value Focused Thinking (VFT) approach used to decompose and quantify the complex issues. A Mixed Integer Programming (MIP) is developed whose objective maximizes the institute's values and whose implementation efficiently solves the academic course scheduling problem at AFIT. Finally, the results of this research are presented.

Survey Of Literature

Academic course scheduling is generally broken into two main tracts in the literature: (1) faculty to course assignments and (2) the assignment of courses to days, times, and rooms, herein referred to as course timetabling. This research deals only with

the latter area, as each course at the School of Engineering for AFIT has been assigned to a faculty member, by departmental process, prior to scheduling.

Mixed Integer Programming Approach

Many examinations of the course timetabling problem in the literature present a Mixed Integer Problem (MIP) formulation. Mulvey (1982) presents the following MIP using binary variables, denoted as problem P1.

Problem P1: Mulvey's MIP Formulation

$$\text{Maximize} \quad \sum_{i=1}^m \sum_{j=1}^n c_{ij} x_{ij} \quad (1)$$

$$\text{Subject To} \quad \sum_{j=1}^n x_{ij} = 1 \quad \text{all } i, \quad (2)$$

$$\sum_{i=1}^m k_i x_{ij} \leq f_j \quad \text{all } j, \quad (3)$$

$$x_{ij} \leq 1 \quad \text{all } p, t, \quad (4)$$

$$x_{ij} \leq 1 \quad \text{all } r, t, \quad (5)$$

$$x_{ij} = \{0,1\} \quad (6)$$

where i is defined as a course, and j as a classroom/day/time combination. The binary variable x_{ij} is 1 if course i is taught during the classroom/day/time combination j and 0 otherwise. I_p is an indexed set defining which classes are taught by faculty member p , while I_r defines which classes are assigned to student r . Finally, S_t is the set of classroom/day/time combinations that occur simultaneously and c_{ij} is a cost coefficient realized when course i is assigned to classroom/day/time combination j . The first

constraint, equation (2), ensures that each class is assigned to only one classroom/day/time combination. Equation (3) requires adequate capacity of the classrooms, while (4) and (5) preclude instructors and students from being assigned to two activities at one time (Mulvey: 1989).

Mulvey classifies this MIP formulation as a "well-defined model", meaning the solution can theoretically be found using a standard MIP solution technique, such as branch and bound. However, the large number of binary variables required to implement the MIP formulation led Mulvey (1989) to state that "a realistic size [academic course scheduling] problem cannot be solved within a reasonable length of processing time." For example, consider a timetabling problem in which there are 100 courses to schedule in 10 classrooms. We will restrict the problem further by requiring each course to be started on the hour between 0800 and 1700, thus allowing only 45 time slots per week. This relatively small timetabling problem's formulation would require, $100 \times 10 \times 45$ or 45,000 binary variables, rendering the problem computationally intractable by most existing MIP solvers.

Sampson, Weiss, and Freeland (1995) propose a similar MIP formulation to solve the course timetabling problem. As with the Mulvey formulation, the MIP was abandoned "because of the combinatoric nature of the problem" (Sampson, Freeland and Weise: 1995). Mulvey (1989) eventually proposed a relaxation of the MIP and a "man-machine interaction" approach to finding a solution. Man-machine interaction requires user input as the solver executes. Sampson and Weiss (1995), Ferland and Fleurent (1994), and Bloomfield and McSharry (1979) propose heuristic techniques as well as

man-machine interaction to solve the course timetabling problem and develop a working schedule for academic courses.

Alvarez-Valdez, Martin, and Tamarit (1996) developed a tabu search heuristic to solve a timetabling problem for Spanish secondary schools. Costa (1994) also proposes a tabu search approach to course scheduling. In both implementations, a traditional MIP formulation of the academic course scheduling problem is solved to near optimality. Great improvements in CPU time are realized by a tabu search over a Mixed Integer Solver.

Cost Coefficients

Although the overriding theme of the academic course scheduling literature proposes heuristic or iterative approaches, the definition of the c_{ij} , (cost coefficients) differ. Mulvey proposes a metric, such as the number of occupied seats, be used to determine a cost associated with scheduling course i in classroom/day/time combination j (1982).

Bloomfield and McSherry determine the cost coefficients using instructor preferences (1979). Each instructor is given a choice of either a Monday, Wednesday, and Friday schedule or a Tuesday and Thursday schedule. Additionally, instructors can pick either AM or PM time of day and a type of classroom. As with most of the models, classrooms are grouped by type, e.g. those classrooms having similar capacities, equipment, and so forth. Each instructor provides a preferred choice for a day, time, and room and a ranking of the choices. The heuristic, proposed by Bloomfield and McSherry (1979), tries to satisfy as many preferences as possible. The heuristic initially schedules a day to each instructor who ranked “day” the highest, a time to each instructor who chose

“time” as the highest and a location to each instructor who preferred “room type”. The heuristic continues to iterate until a working schedule is found.

Sampson, Freeland and Weiss (1995) also use faculty preferences to determine the cost coefficients. Additionally, they incorporated the students’ request to enroll in specific classes. Their model uses a “modified-local search heuristic” to develop a timetable. Furthermore, an enrollment-construction heuristic was used to maximize the number of students who are able to attend the courses they desired. This iterative approach is used to find a schedule that works within faculty preferences and constraints, while attempting to maximize the number of courses available to interested students (Sampson, Freeland and Weiss, 1995).

Graves, Schrage and Sankaran (1993) implement an auction method to incorporate student preferences. Students are allowed to pick from an already established timetable. Each student is given a place in a queue. The number of preferences satisfied during the previous quarter’s schedule primarily determines this placement. For subsequent class registration an inverse order of scheduling permitted students a priority advantage based upon the number of previously scheduled preferences. In other words, positioning in the queue is relative to the extent to which preferences were accommodated by previous schedules.

VFT Theoretical Model

Although the formulation of the MIP is straight forward, the number of binary variables associated with a course timetabling problem require a computationally intractable amount of time for solution. The goal to produce a course schedule is a difficult, complex problem. Decision analysis, a branch of operations research, “provides

structure and guidance for thinking systematically about hard decisions” (Clemens, 1996).

Decision analysis requires the involvement of a decision maker, presumably the Dean of the institution, for the academic course scheduling problem. The decision maker’s values are the key elements in the process. According to Clemens, the decision analysis process can be broken down into key elements or steps. As these steps are followed, a clearer understanding and solution to the problem may be available. This process decomposes the problem to make it simpler. Clemens points out that "decomposition is the key to decision analysis" (Clemens, 1996). The following flow chart from Clemens illustrates the decision analysis process.

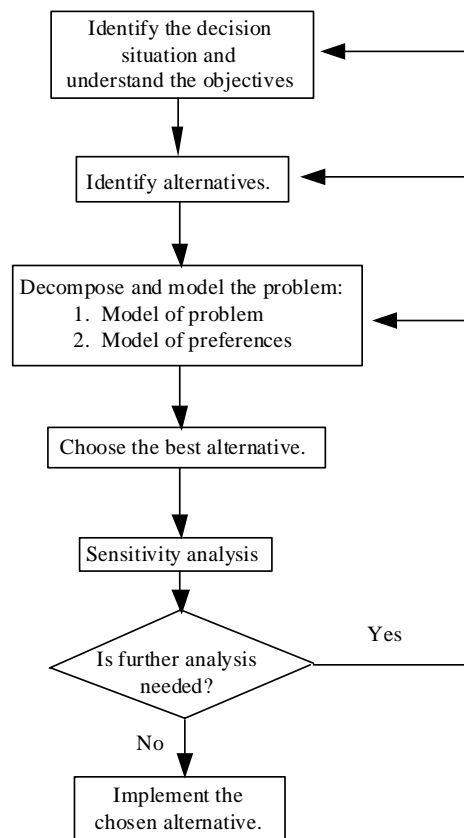


Figure 1. Decision Analysis Process Flowchart (Clemens, 1996)

Note the process is iterative. The desired result may always be improved, through continual refinement of the decision situation, the addition of new alternatives, or refined insight and further decomposition.

To ascertain a precise understanding, the decision situation must be well defined and the objectives clearly outlined, prior to decomposing the problem. There are two prevailing thoughts with regard to this effort. Keeney (1992) identifies the first approach as “alternative-focused thinking”. This approach concentrates on developing potential solutions to the problem, known as alternatives, and using the differences in the alternatives for evaluation. A comparison of two or more working schedules created manually by staff of the office of Academic Operation would be an example of this approach. Keeney (1992) does not favor this approach, claiming it is backwards; “it puts the cart of identifying alternatives before the horse of articulating values”.

Value Focused Thinking

Conversely, Keeney (1992) concentrates on an approach he calls “value-focused thinking”. Contrary to “alternative-focused thinking”, this approach concentrates on soliciting from the decision maker and others who are knowledgeable about the problem, a set of values or goals, which address what is important in the decision situation. Having identified these goals, they are structured into general and specific objectives, that if achieved will realize the established goals. These objectives are then organized into a value hierarchy. A value hierarchy structures these objectives such that the upper level values are more general and have a greater impact on the overall value of the hierarchy, while lower level values further describe the upper levels. The most specific values are then given evaluation measures or metrics that show how well an alternative has met that

value. Furthermore, each level of the value hierarchy can be weighted based on the decision maker's preference for obtaining that value over other values at the level.

Below is an example of a value hierarchy with weights.

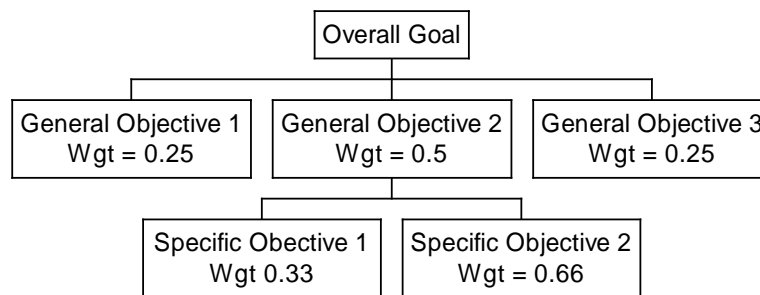


Figure 2. Value Hierarchy Example

The value hierarchy can be used to inspire the creation of new alternatives that had not been previously considered. According to Kirkwood (1997), “When you know what you are trying to accomplish, then you can attempt to identify alternatives that address these objectives”. Furthermore, the value hierarchy provides a means for evaluating various alternatives. The use of the evaluation measures, associated with the most specific values, provide “formal methods... [using] a mathematical function to combine evaluation measures from the hierarchy” that can be used to rank alternatives and determine the best solution to a difficult problem (Kirkwood, 43:1997).

Multiple Objective Value Analysis

Once a value hierarchy has been established, evaluation measures or metrics are used to capture an alternative's worth with regards to a specific objective. Evaluation measures are attributes that provide an objective evaluation of performance. Single

dimensional value functions translate the metric performance into a unitless quantity known as value. Single dimensional value functions are either monotonically increasing or decreasing (Kirkwood, 1997).

Weights are determined for each evaluation measure. The weights are used to show “different degrees of importance attached” to the performance of an alternative with regards to a specific evaluation measure. That is, if evaluation measure (1) is weighted more heavily than evaluation measure (2), “variations over the range for [evaluation measure (1)] are more important than variations over the range for [evaluation measure (2)] when using this set of weights” (Kirkwood, 1997).

Once the weights and single dimensional value functions are established, the final value or overall value of each level of the value hierarchy becomes

$$v(X_1, X_2, \dots, X_n) = w_1v_1(X_1) + w_2v_2(X_2) + \dots + w_nv_n(X_n) \quad (7)$$

where $v_i(X_i)$ is the value determined using the single dimensional value functions associated with evaluation measure or attribute X_i and w_i is the weight given to that evaluation measure (Kirkwood, 1997). This assessment of value is called an additive value function.

Kirkwood (1997) states that the attributes, X_i , of an additive value function must have mutual preferential independence. Mutual preferential independence exists if Y is preferentially independent of Z, where Y and Z are a partition of $\{X_1, X_2, \dots, X_n\}$. Kirkwood (1997) shows that “Y is preferentially independent of Z if the rank ordering of alternatives that have common levels for all attributes in Z does not depend on these common levels.” These assumptions will later be shown to hold for this research.

Methodology

Academic Course Scheduling can be decomposed into a series of separate decisions. A decision is made whether to schedule course i on day/time j and in room r or not. A schedule is created once a decision is made for each course i . Obviously, there exist myriad different combinations of decisions that all create a schedule. Therefore, an additional decision chooses the “best” schedule from the set of possible schedules. The methodology herein uses this view of the academic course scheduling problem. The decision maker, for this research was the Dean of the School of Engineering; his decision was supported by his staff, and the Department Heads.

Influence Diagram

The effort began with the creation of an influence diagram. An influence diagram is a visualization tool that allows a decision maker to annotate the decision to be made and the important factors that influence the value of the result of the decision. The influence diagram for the course scheduling problem at AFIT is shown in Figure 3. Directives from the Dean of the School of Engineering, as well as department, faculty and student preferences are factors that influence the value of the decision to schedule course i on day/time j in room r . The outcome of the individual course scheduling decisions as well as room capacities, room availability, instructor conflicts and student conflicts effect the value of the overall schedule. The influence diagram as a whole defines the decision situation.

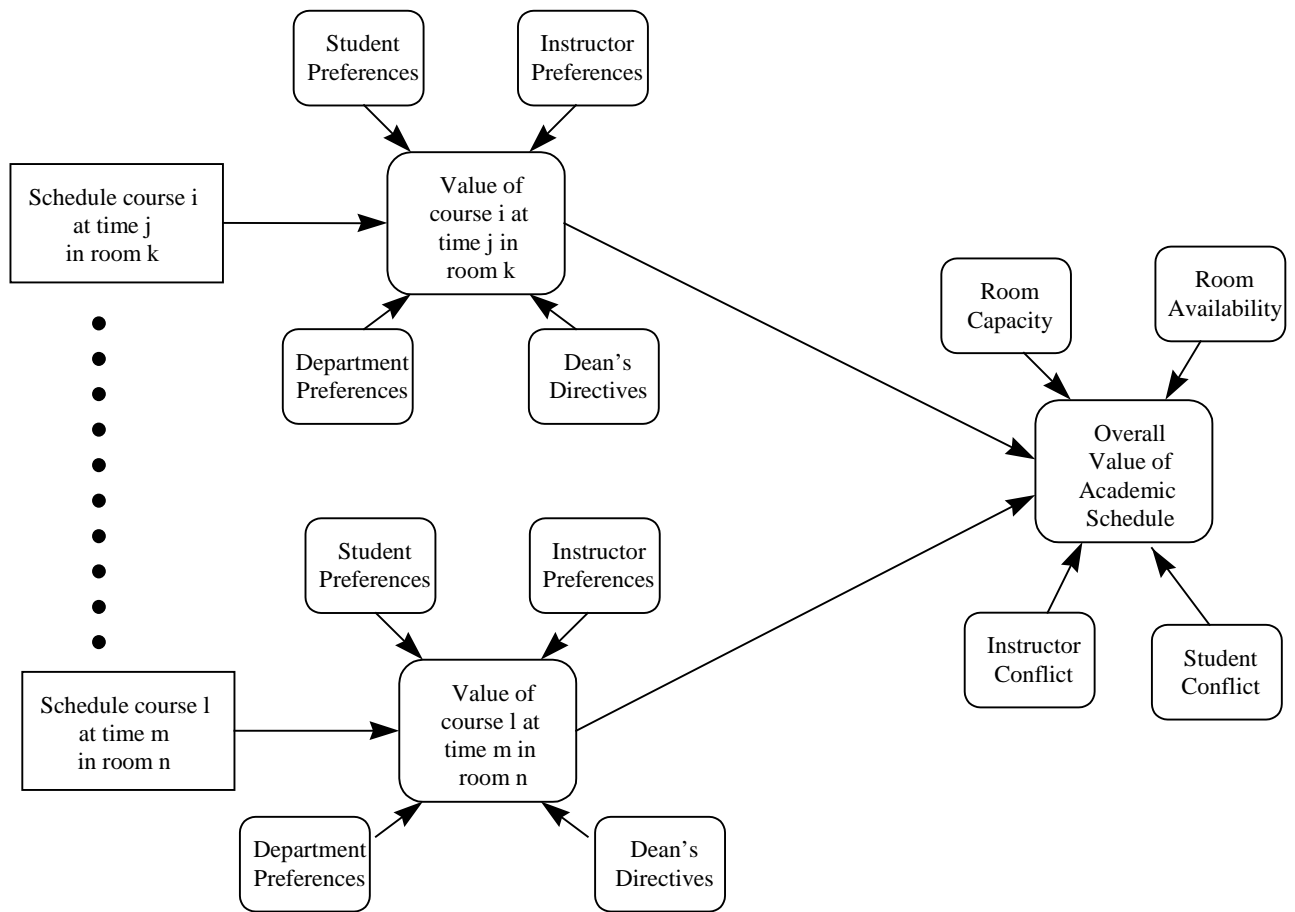


Figure 3. Influence Diagram

Rectangles represent decisions, while rounded boxes represent values. The arrows show a direct influence imparted by a decision or value.

Value Hierarchy

The influence diagram aids in the creation of the value hierarchy. A value hierarchy is developed by working closely with the decision maker to decompose his decision into the factors that influence the decision situation. These are placed within the levels of the hierarchy. The value hierarchy must be mutually exclusive and collectively

exhaustive. Figure 4 shows the value hierarchy for the decision situation illustrated by the influence diagram in Figure 3.

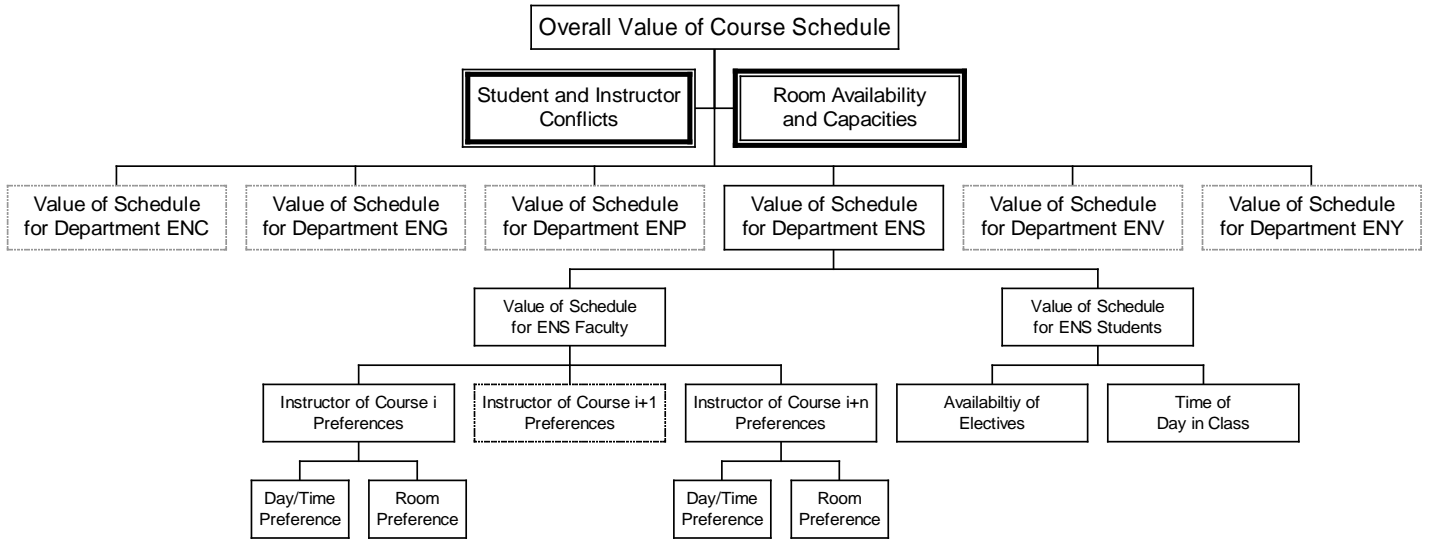


Figure 4. Value Hierarchy

The value hierarchy has five distinct levels and two go/no-go criteria. The go/no-go criteria are shown in bold outline and are defined later. The value of the schedule for each department has the most influence on the overall value of the schedule. The decision maker, through weighing of the values at this level, determines the contribution of each department's value towards the overall value. In a similar fashion, the contribution of the values from lower levels on upper levels is dictated by weighting. The weights of any level of the hierarchy must be a convex combination. Therefore, the following equations govern the weights used in the calculation of value.

$$\sum_{D=1}^6 w_D = 1 \quad (8)$$

$$w_{f_D} + w_{s_D} = 1 \quad \text{for all } D \quad (9)$$

$$\sum_{i_D} w_{i_D} = 1 \quad \text{for all } D \quad (10)$$

$$w_{j_{i_D}} + w_{r_{i_D}} = 1 \quad \text{for all } i_D \quad (11)$$

where w_D is the weight of each department, w_{f_D} is the weight of the faculty preferences in department D and w_{s_D} is the weight of the students in department D . w_{i_D} is defined as the weight of each course in department D , w_{jiD} is the weight of day/time preference j for course i_D and, w_{riD} is the weight of room preference r for course i_D . The Dean assigns the departmental weighting, while the respective Department Heads assign the faculty and course weightings. Instructors assign day/time scenario and room group weights.

For the purposes of this research for AFIT, the weight of the student's values, w_{sD} , for each department was set to zero, making w_{fD} equal to 1. This was done for two reasons: (1) the value of the availability of electives is covered by the go/no-go criteria of a deconflicted schedule, and (2) as active duty military officers attending course is considered a student's primary duty and additional duties that may make a day/time scenario unattractive are kept to a minimum. Of course, student weighting can be utilized in a different operational setting.

The following value function describes the contribution of day/time preference j of course i on the overall value of the schedule.

$$V_{i_D j} = w_D \cdot w_{f_D} \cdot w_{i_D} \cdot w_{j_{i_D}} \cdot v_{j_{i_D}} \quad (12)$$

where V_{iDj} is the contribution to the overall value and v_{jiD} is the value of scheduling course i in day/time j . In a similar manner, equation (13) describes the contribution of room preference r of course i .

$$V_{iDr} = w_D \cdot w_{f_D} \cdot w_{i_D} \cdot w_{r_{iD}} \cdot v_{r_{iD}} \quad (13)$$

where V_{iDr} is the contribution to the overall value and $v_{r_{iD}}$ is the value of scheduling course i in room r .

The value of v_{jiD} and $v_{r_{iD}}$ is determined using a single dimensional value function. The single dimensional value function is a monotonically decreasing step function that transforms preference numbers into a unitless property known as value. Figure 5 shows the value function used to determine the value of both the instructors' day/time and room preferences. This value function is used for all courses scheduled. The department heads unanimously agreed to the slope and shape of the function.

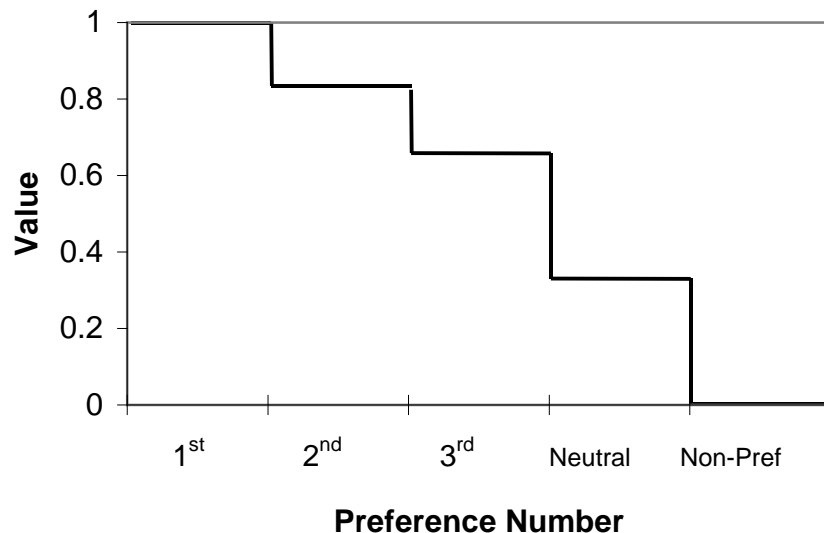


Figure 5. Single Dimensional Value Function

Therefore, course i 's total contribution on the overall value, V_{iD} , is found by combining equations (12) and (13).

$$V_{iD} = V_{iDj} + V_{iDr} = w_D \cdot w_{fD} \cdot w_{iD} \left(w_{j_{iD}} \cdot v_{j_{iD}} + w_{r_{iD}} \cdot v_{r_{iD}} \right) \quad (14)$$

Finally, summing the value of all courses and multiplying the quantity by the binary go/no-go variables, C_s and R_s , determines the overall value, V_s , of schedule s . The binary variable C_s is 1 if no student or instructor is assigned to attend any two courses at simultaneous days and times and 0 otherwise. The individual's education plan specifies the courses for which the student is enrolled. This go/no-go criteria is essential to a academic course schedule because of the 18 month window in which all students assigned to AFIT must take *all* required courses for graduation and *all* electives that directly support their research. The binary variable R_s is 1 if: (1) all courses assigned to a room group do not have an enrollment that exceed the capacity of the rooms in that group and, (2) the number of courses scheduled at any time does not exceed the number of rooms available. R_s is equal to 0 if either of the above condition is not met.

$$V_s = C_s \cdot R_s \left| \sum_{iD} V_{iD} \right| \quad (15)$$

Clearly the most valuable schedule can be found by comparing the overall value, V_s , of every possible schedule. A Mixed Integer Program is used to make these comparisons and determine the most valuable schedule.

Mixed Integer Program

The formulation of the Mixed Integer Program (MIP) requires the definition of a binary variable x_{ijk} , where i is a three-digit course index number, j is a three-digit day/time scenario index and k is a room group index number. A course index number is assigned to each course to be scheduled. A day/time scenario consists of a set of days per week on which a course is taught combined with a time on each day, herein referenced as scenarios.

The scenarios used in this research require identical time periods be used on each day of the week. Additionally, the time periods are of equivalent length equal to 1 hour. These requirements are not essential for the formulation, but reduce the number of possible scenarios and are representative of standard academic course schedule. In general, a course that meets from 0800 – 0900 on Monday will meet during the same hours on subsequent days of the week. Table 1 shows the scenarios, by number of hours per week a course meets and an index number assigned to each scenario. When a time range is given, the scenarios are numbered in increasing order as the start hour increases throughout the days of the week.

Table 1. Day/Time Scenarios

	Days of the Week	Start Times (on the hour)	Scenario ID #
1 Hour Class•	M	0800 -1600	001 - 009
	T	0800 -1600	010 - 018
	W	0800 -1600	019 - 027
	R	0800 -1600	028 - 036
	F	0800 -1600	037 - 045
2 Hour Class•	M	0800 -1500	046 - 053
	T	0800 -1500	054 - 061
	W	0800 -1500	062 - 069
	R	0800 -1500	070 - 077
	F	0800 -1500	078 - 085
3 or 4 Hour Class•	MW	0800 -1500	086 - 093€
	TR	0800 -1500	094 - 101€
	MR	0800 -1500	102 - 109€
	MF	0800 -1500	110 -117€
	TF	0800 -1500	118 - 125€
3 Hour Class	MWF	0800 -1600	126 - 134€
	MTR	0800 -1600	135 - 143€
	MTF	0800 -1600	144 - 152€
	MWR	0800 -1600	153 - 161€
	MRF	0800 -1600	162 - 170€
	TWF	0800 -1600	171 - 179€
	TRF	0800 -1600	180 - 188€
4 Hour Class	MTWR	0800 -1600	189 - 197€
	MTWF	0800 -1600	198 - 206€
	MTRF	0800 -1600	207 - 215€
	MWRF	0800 -1600	216 - 224€
	TWRF	0800 -1600	225 - 233€
6 Hour Lab	MW	0900	234€
	MW	1300	235€
	TR	0900	236€
	TR	1300	237€
3 Hour Lab	M	0900	238€
	M	1300	239€
	T	0900	240€
	T	1300	241€
	W	0900	242€
	W	1300	243€
	R	0900	244€
	R	1300	245€

Rooms in the School of Engineering were grouped into categories based on similar capacities, equipment, and their location within the school building. Table 2 shows the room group index number and the actual room numbers that correspond to the grouping.

Table 2. Room Groups

Room Group	Classroom Numbers	Capacity
1	60,62€	35€
2	160-163€	30€
3	260-263€	28€
4	172, 176B€	35&24€
5	64A,164A,176A€	10€
6	Labs 241,265,121€	25€
7	Lecture Hall 121€	54€
8	Lecture Hall 230€	54€
9	Computer Lab 165€	16€

Solicitation of Preferences

An electronic questionnaire, which took the instructor through a step by step process, was provided to the instructor of each course, lab and lecture to be scheduled. The questionnaire elicits a first, second and third choice for day/time preferences. The instructors chose a set of days of the week and a time range on those days for the start of their course or courses for each of the three preferences. The time ranges corresponded to five periods within the day. Table 4 shows the ranges and the corresponding start times with that range. In every case, with the exception of MORN, the range contains two start times. These preferences were transformed into scenario index numbers defined in Table 2. For example, if an instructor chose MWF MIDM as a preference, scenarios

127 and 128 are used as indicators of this preference. In effect, each instructor could chose up to six scenarios via the three preferences.

Table 3. Time Ranges

Course Start Time	Time€ Range€
0800	MORN
0900,1000	MIDM
1100,1200	NOON
1300,1400	EAFI
1500,1600	LAFT

In a similar fashion, the questionnaire provided three room group preferences. Additionally, instructors could provide days of the week and time ranges when teaching was of no value. These scenarios are known as non-preferences. This will be discussed further later. Finally, the instructors indicated what contribution the day/time scenario preference and room preference would have on the value of course index number by providing weights, w_{jiD} and w_{riD} .

Each completed questionnaire provided 18 binary variables to the MIP, a combination of 6 scenarios and 3 room group preferences. For example, the variable $x_{0011283}$ would describe a preference for course 001 of day/time scenario 128 and room group 3. The value of this variable would be determined using equation (14) and the single dimensional value function shown in Figure 5. This value becomes the cost coefficient of the objective function of the MIP.

MIP Formulation

Obviously, a maximization of an objective function made up of the variables produced from the questionnaires would produce a schedule with the greatest overall value. An objective function of this type is of the form of equation (14), which is an additive value function. The use of an additive value function as the objective function does not violate the assumptions of an MIP formulation.

Winston (1994: 53) states that a viable objective function must meet two criteria. First, “the contribution to the objective function from each decision variable must be proportional to the decision variable.” The fact that the value function is additive and linear satisfies this criteria. Secondly, according to Winston (1994: 53), “the contribution to the objective function for any variable is independent of the values of the other decision variables.” As stated in the VFT theoretical presentation, additive value functions require mutual preferential independence of the attributes on which value is evaluated.

Mutual preferential independence is shown for the each attribute x_{ijk} in the following manner. The value of any day/time scenario j and room group k of course i remains constant to the decision maker regardless of the preferences placed on other day/time scenarios and room groups by the remaining instructors. In other words the partition of day/time scenarios and room groups for course i is preferentially independent of the remaining day/time scenarios and room groups for other courses.

However, a schedule that simply maximized the additive value function would most certainly violate one of the go/no-go criteria and therefore be reduced, via equation (15), to an overall value of zero. Therefore, the following MIP formulation restricts the

feasible region to schedules that do not violate the go/no-go criteria. This is done through the use of three distinct types of constraints.

The first set of constraints require that each course is scheduled against one and only one scenario and room combination. The number of these constraints is equal to the total number of courses being scheduled. This set of constraints may possibly produce an MIP that has no feasible solution. If every combination of preference variables violate the other go/no-go criteria then a feasible solution does not exist. To remedy this possibility, a dummy variable, whose contribution to the objective function is zero, is included in this constraint. The dummy variable will, by definition, not violate any of the other constraints. The constraints become:

$$\sum_j \sum_k x_{ijk} + x_{id} = 1 \quad \text{for all } i \quad (16)$$

A second set of constraints insure that no student or instructor conflicts exist through the use of zoning constraints. Patterson and Albright (1975) used similar constraints in assembly line balancing problems. Zoning constraints preclude two sets of variables from using the same resource. Here zoning constraints prevent courses with common students or instructors from being scheduled, either in part or in whole, at simultaneous times on the same day(s). Variables whose course ID shares common students with course i and whose scenario takes place across the same hour and day as any hour and day in scenario j are included in the set $DECON_{ij}$. The zoning constraints then become:

$$M \cdot \sum_k x_{ijk} + \sum_{x_{ijk} \in DECON_{ij}} x_{ijk} \leq M \quad \text{for all } i \text{ and } j \quad (17)$$

where M is a constant greater than the cardinality of $DECON_{ij}$. There are i times j number of constraints of this type.

The third set of constraints insure that the number of courses scheduled during any hour of the week in a room group does not exceed the number of rooms in that group. Variables whose room group includes r and whose scenario occurs during time t are included in the set $ROOM_{rt}$. $RMNUM_{rt}$ is a constant defined by the number of rooms in room group r at time t . The constraints then become:

$$x_{ijk} \leq RMNUM_{rt} \quad \text{for all } r \text{ and } t \quad (18)$$

$x_{ijk} \in ROOM_{rt}$

There are r times t constraints of this type.

The final MIP formulation maximizes the objective function subject to equations (16), (17), (18) and a restriction of the variables as binary. The full MIP formulation is shown below as problem P2.

Problem P2: MIP Formulation

Maximize

$$\sum_{i,j,k} c_{ijk} \cdot x_{ijk}$$

Subject To

$$\sum_{j,k} x_{ijk} + x_{id} = 1 \quad \text{for all } i$$

$$M \cdot \sum_k x_{ijk} + \sum_{x_{ijk} \in DECON_{ij}} x_{ijk} \leq M \quad \text{for all } i \text{ and } j$$

$$x_{ijk} \leq RMNUM_{rt} \quad \text{for all } r \text{ and } t$$

$x_{ijk} \in ROOM_{rt}$

$$x_{ijk} = \{0,1\} \quad \text{for all } i, j, \text{ and } k$$

If an instructor fails to provide three preferences for either day/time or room, the scheduler may assign neutral scenario and room preferences to generate variables associated with the course. The neutral scenarios and neutral rooms have a lower value than any of the three preferences (Refer to Figure 5). Moreover, neutral variables are assigned to any course whose dummy variable is chosen in the solution to P2. The scheduler chooses neutral scenarios from the set of possible scenarios minus preferred scenarios and non-preferred scenarios. Problem P2 can be solved in an iterative fashion until no dummy variables are selected, given a feasible schedule exists. A solution to P2 will provide the schedule with the best overall value for the preferences provided and the neutral variables chosen.

Decision Support System

In conjunction with a main goal of this research, a Decision Support System (DSS) makes implementation of Problem P2 virtually seamless. The Educational Decision Support and Scheduling System (EDSSS) is comprised of three parts: (1) an electronic questionnaire, (2) a problem generator, and (3) the Optimization Subroutine Library (OSL), an IBM MIP solver.

The electronic questionnaire is a menu driven Visual Basic Module run in MS Excel, that can be delivered via E-mail. The module displays a Windows dialogue box through which instructors indicate preferences and non-preferences for days and times as well as preferences for room groups. The questionnaire also solicits the respective

weighting for day/times and room groups. Dropdown menus, containing available days, times and room groups, provide a user-friendly environment for preference selection.

The problem generator is an MS Excel spreadsheet, and uses a suite of modules programmed in Visual Basic. Preferences, obtained via the electronic questionnaire, are arranged into a value table within the problem generator. A course listing, containing the SSN of all students enrolled in each course, is automatically transformed into a course confliction matrix. The course confliction matrix is a square matrix whose rows and columns are made up of the course listing. Element $[i,j]$ equals 1 if course i and course j possess a common student, and 0 otherwise. Similarly, a scenario confliction matrix is a square matrix whose rows and columns are made up of the scenario list. Element $[i,j]$ of the scenario confliction matrix is 1 if scenario i and scenario j share any common hour on any matching day, and 0 otherwise.

The problem generator automatically generates the $DECON_{ij}$ and $ROOM_{rt}$ sets. Problem P2 is then generated in Mathematical Programming System (MPS) format. The MPS formulation is transferred to OSL and solved as a maximization MIP. OSL returns the x_{ijk} variables whose value is 1 and a schedule is created. If any dummy variables are returned then new neutral variables are entered into the generator value table and the process is rerun.

RESULTS

The results presented are for the spring quarter at the School of Engineering for AFIT. The spring quarter contains 83 different courses, labs, and group lectures. The school building is divided into the 9 room groups shown in Table 2. The instructors for each course, lab or lecture were given the opportunity to provide preferences for

day/times and rooms. If an instructor is assigned to teach more than one course, lab or lecture, then multiple questionnaires were filled out and preferences were captured for each course. If an instructor did not wish to provide any preferences or did not completely fill out the questionnaire, then neutral preferences were assigned to the instructor by the scheduler. Implementation of Problem P2 for the spring quarter utilizes 1398 binary variables and 953 constraints.

Four different schedules were created. The schedules differed by the weighting assigned to each department, w_D . Therefore, only the cost coefficients of the objective function change. The variation in schedules provides the decision maker with a sensitivity of the departmental weighting on the overall value of the schedule, the number of 1st day/time preferences accommodated, and the number of neutral preferences assigned. These measures are considered to provide the most insight into the quality of a schedule. The number of 1st day/time preferences is used, in lieu of room preferences, because the overwhelming majority of instructors gave day/time preferences more weight.

The initial schedule uses an equal weighting for each department. The second schedule's departmental weighting is the percent of courses taught by that department of the total 83 offered by the school. This weighting potentially gives each course equal impact on the overall value. However, if department heads wish to weight a subset of their courses higher than the remaining courses in the department to reward the instructors with a greater opportunity of achieving first preferences, the remaining courses impact are less than the impact of courses whose department weighted all courses equally. The third schedule uses weighting commensurate with the number of students

the courses within that department instruct. The final variation combines the weighting used in the second schedule, however, all group lectures are given their first day/time preference. Table 4 shows the weights used for each scheduling variation.

Table 4. Departmental Weightings

Schedule Weighting	Departments					
	ENC	ENG	ENP	ENS	ENV	ENY
Equal	0.167	0.167	0.167	0.167	0.167	0.167
Number of Courses	0.145	0.349	0.205	0.108	0.06	0.133
Number of Students	0.128	0.391	0.203	0.149	0.047	0.082
Number of Courses with Lectures Given	0.145	0.349	0.205	0.108	0.06	0.133

Table 5 summarizes the problem generator time, OSL solver time and number of course not scheduled, i.e. assigned a dummy variable. The problem generator and OSL were run on a 200 MHz PC platform using WindowsNT.

Table 5. Summary of Processing Times

Schedule Weighting	Problem Generator CPU Time (sec)	OSL Solver CPU Time (sec)	Number of Courses Not Scheduled
Equal	580	1121	4
Number of Courses	619	1197	4
Number of Students	575	1073	3
Number of Courses with Lectures Given	620	798	4

Table 5 clearly shows that each schedule took less than 30 minutes to generate on a personal computer. The relatively short processing time will allow the scheduler to make new runs if enrollment data changes or instructors are reassigned to different courses. Additionally, any subsequent sensitivity analysis important to the decision maker can be readily provided.

The percentage of courses not scheduled, based on the preference variables, is less than 5% for any of the four schedules. The scheduler can assign new neutral preferences to these courses and rerun the process or, manually schedule the relatively small number of courses that remain unscheduled.

Figure 6 compares the overall value, whose range is 0 to 1, of the four scheduling variations. Clearly, the overall value is very insensitive to the departmental weighting.

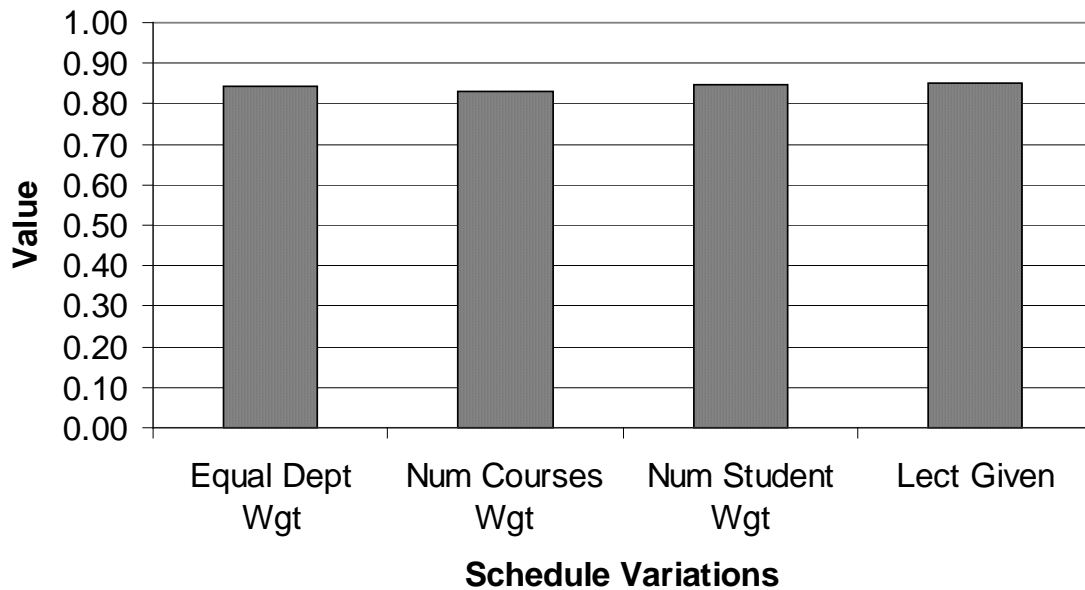


Figure 6. Overall Value of Schedules

Figure 7 shows the value of each department for the four different departmental weightings.

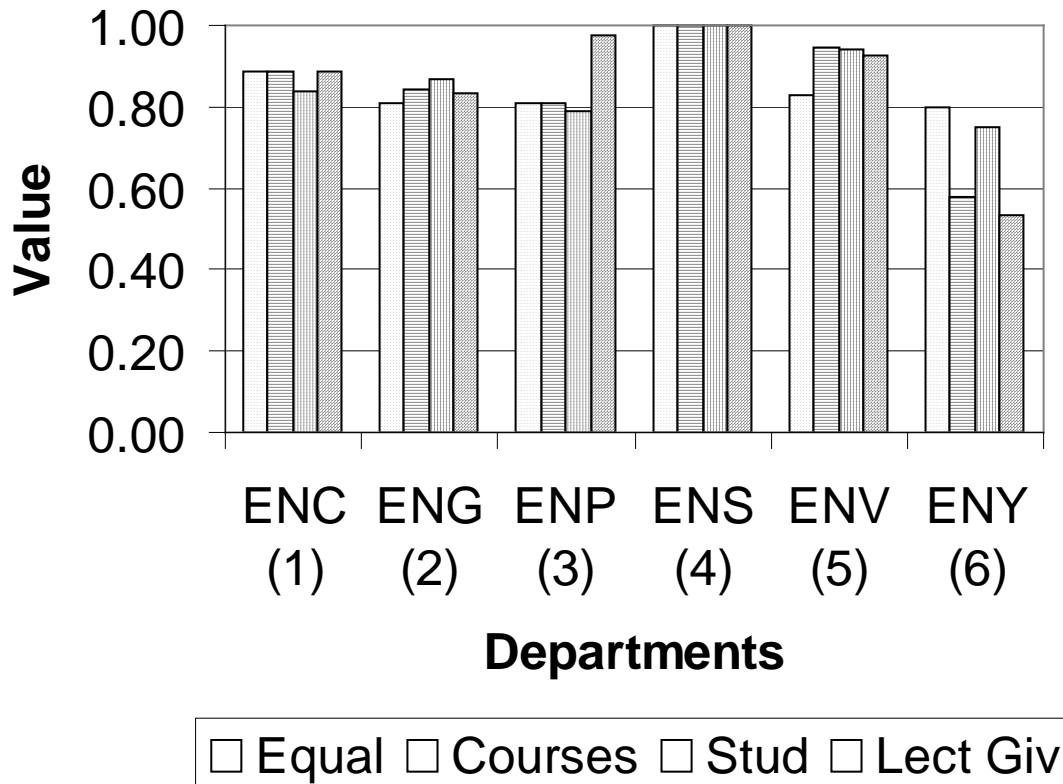


Figure 7. Departmental Value of Schedules

The value of ENY shows the most sensitivity to departmental weighting. However, the change in value is still relatively small, amounting to only 0.23 difference from highest value achieved with the equal weighting schedule and the lowest value when the departmental weighting is based upon number of courses. Other departments indicate even less sensitivity to departmental weighting.

Another measure important to the decision maker is the amount of courses whose 1st day/time preference is accommodated. Figure 8 reveals the extent to which 1st day/time preferences were achieved for each department.

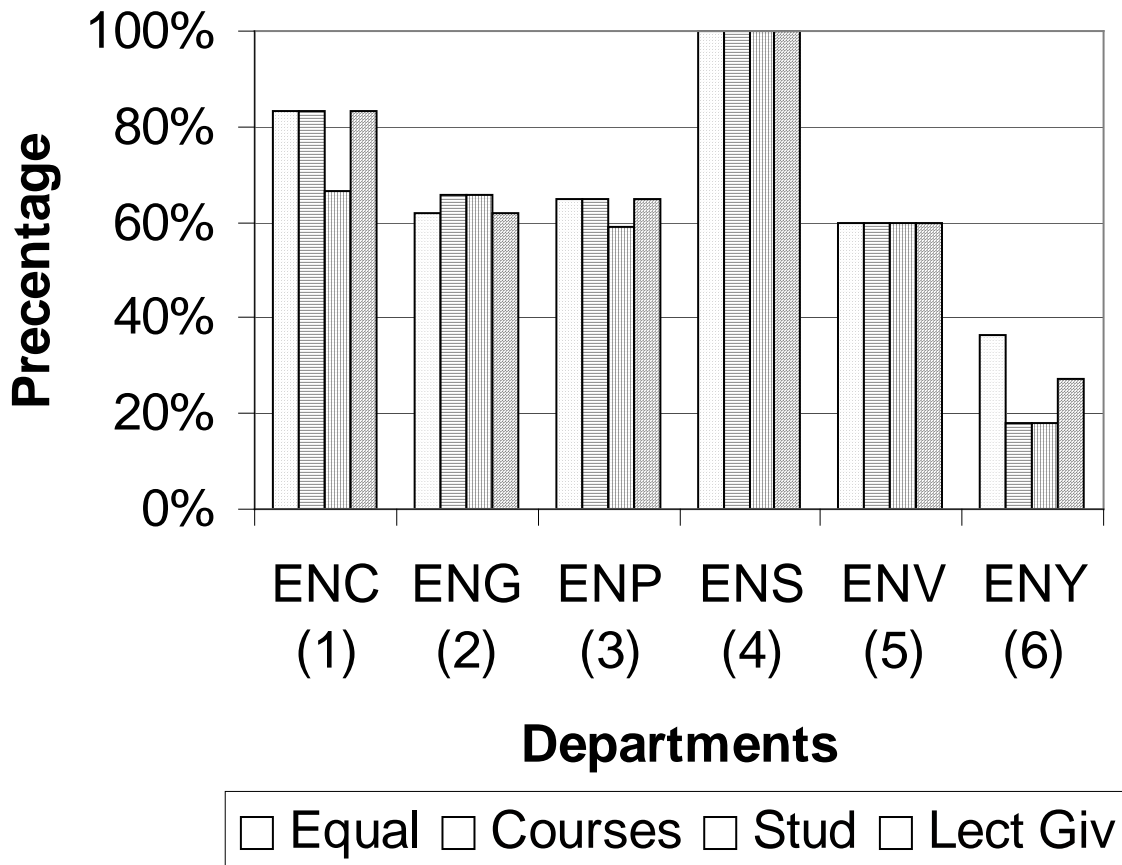


Figure 8. Percentage of 1st Day/Time Preferences Accommodated

In most cases, the number of 1st preferences given is from 60% - 100%. The exception is ENY. Again, little sensitivity is shown to the departmental weighting used to create the schedule. Figure 9 gives some insight to why departments such as ENS have a higher value and number of 1st preferences accommodated than other departments, such as ENY.

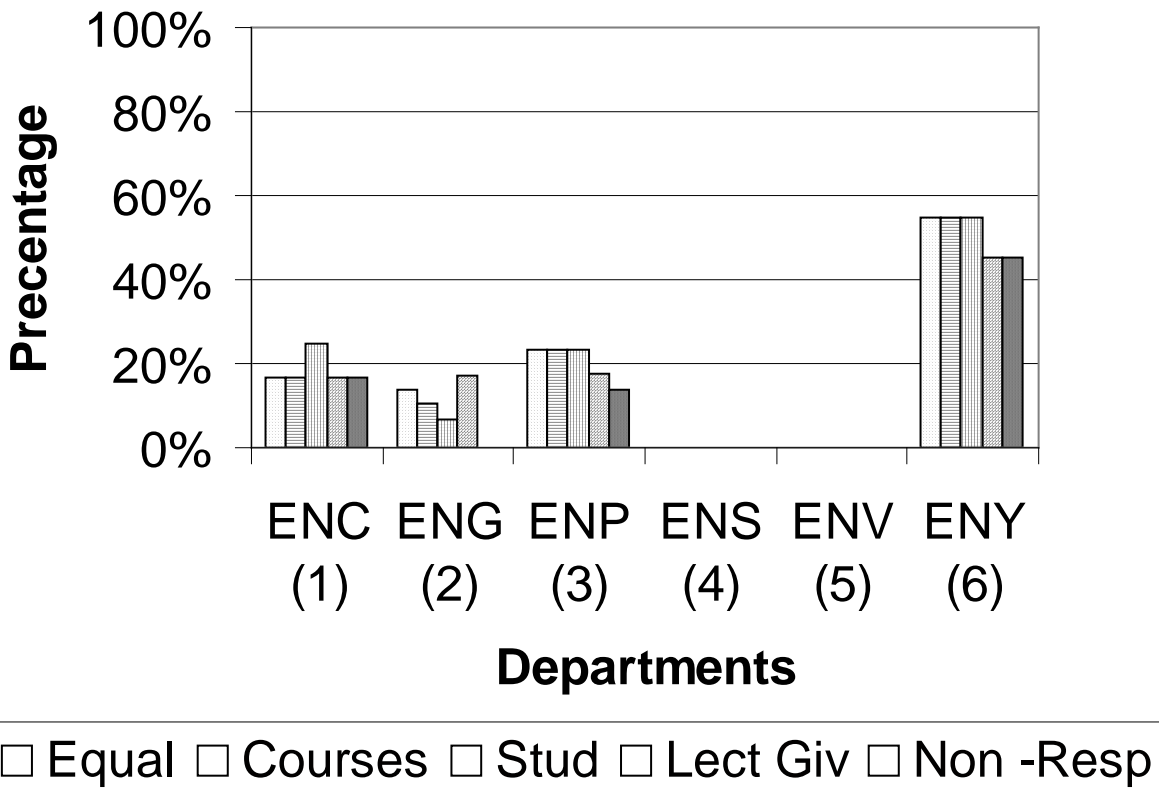


Figure 9. Comparison of Neutral Day/Time Assignments to Non-Respondents

Figure 9 shows a clear trend. The number of neutral day/time scenarios scheduled is proportionate to the number of instructors who did not provide any preferences. Neutral day/times are of significantly less value than any of the three preferred day/times and therefore contribute to a lower departmental value. Additionally, if no preferences are provided, 1st preferences cannot be accommodated.

Iterative Approach to a Complete Schedule

In each case, the schedules developed did not achieve a complete working schedule. The scheduling variation based upon departmental weighting proportionate to the number of course taught was chosen for completion. This variation was chosen because it provides the opportunity for equal weighting of all courses throughout the school.

The initial schedule did not schedule 4 courses, because the preferences associated with these courses violated one of the go/no-go criteria. Therefore, preferences of these four instructors were changed to neutral preferences by the scheduler. Two additional iterations were required before a completed schedule was achieved. The overall value of this schedule was equal to .84, slightly higher than the original overall value. The completed schedule can be used to show room utilization throughout the school building. Figure 10, shows the utilization of classrooms, room groups 1-5.

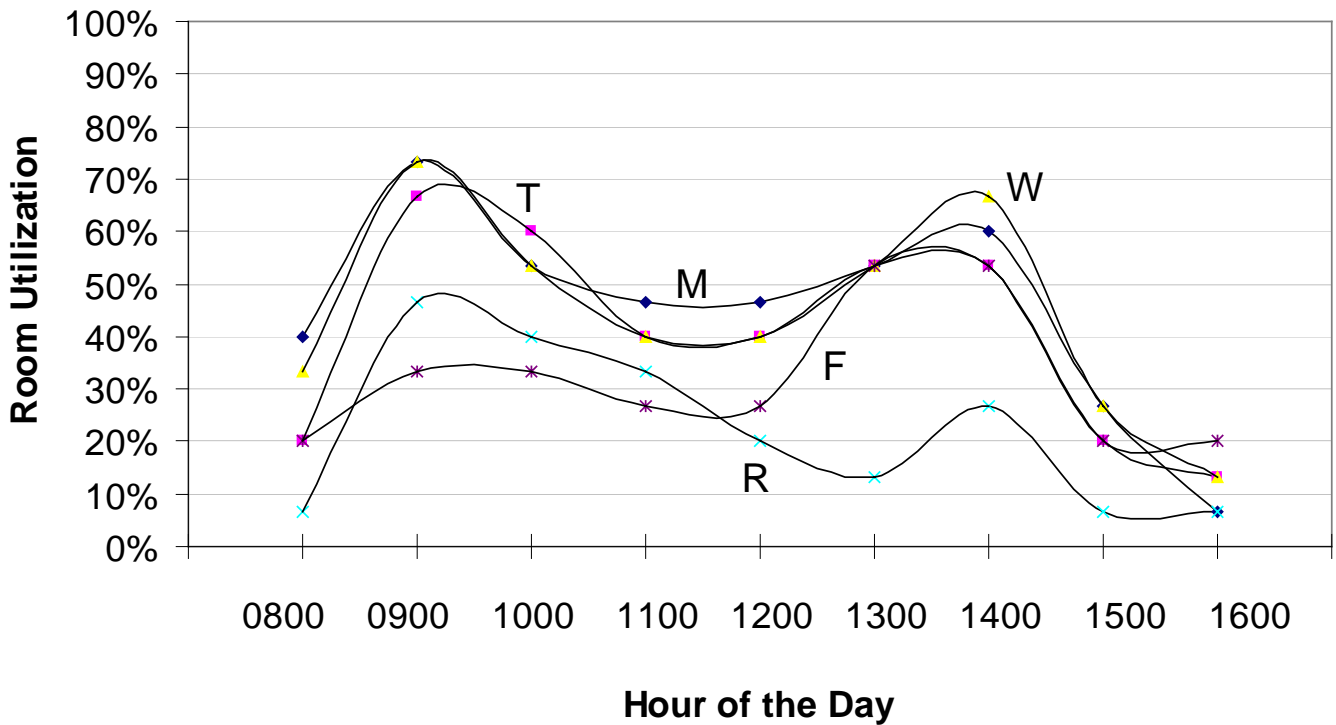


Figure 10. Classroom Utilization for Completed Schedule

Room utilization peaks at the most popular times of day, midmorning and early afternoon. However, room utilization levels during these popular times do not approach 100%. Therefore, any difficulty in scheduling 1st preferences must result from student or instructor conflicts.

Conclusions

The research presented in this paper addresses four significant goals for academic course scheduling at the School of Engineering for AFIT. The important factors or values effecting the quality of an academic course schedule for the School of Engineering are identified. Metrics are established that measure how well a schedule addresses these values. A Decision Support System enables the Office of Academic Operations to implement the research and solicit individual preference efficiently. Finally, the research provides an expedient means of solving the academic course scheduling problem for the School of Engineering. The MIP formulation utilizes only a relatively small number of binary variables, allowing an initial solution in less than 30 minutes and a complete working schedule was achieved in less than 2 hours.

Moreover, the benefits of this research are not lost on larger institutions, for which Problem P2 becomes computationally inefficient to solve optimally. Heuristic solutions, using tabu or other search criteria, readily solve MIPs such as Problem P2, achieving working schedules representative of the institution's goals and principles.

Value Focused Thinking enabled the decision maker to decompose a difficult, complex problem into a simple set of values. These values are used to create alternatives and solve the difficult problem. The academic course scheduling problem at the School

of Engineering for AFIT is solved in a manner that maximizes the contribution the schedule makes to the institutes values and principles. Clearly, the ability of Decision Analysis and VFT as a viable technique to tackle the academic course scheduling problem and find a solution is validated.

Chapter 3

Now that the EDSSS has been used to develop a schedule for the School of Engineering, an obvious extension to this research would create a working schedule for the entire Air Force Institute of Technology. This would require the solicitation of preferences for both the School of Engineering and the School of Logistics. The larger problem would give insight into the upper bound of courses that can be solved using a Mixed Integer Solver.

Additionally, other military institutions such as the Air Force Academy in Colorado Springs or the Military or Naval academies may provide an excellent source for application of this approach. However, this approach is equally applicable to civilian institutions that wish to efficiently create an academic course schedule representative of the values of the varying stakeholders in the academic community.

A second area for extension would be to create a heuristic algorithm that can be incorporated in the existing EDSSS framework. A quick heuristic solver incorporated into EDSSS would alleviate the requirement for an external Mixed Integer Solver. A self-contained scheduling system would allow the simultaneous creation of multiple schedules on different PCs.

The final recommendation would determine the effect student day/time preferences have on the creation of a schedule. Many civilian institutions may be less concerned with obtaining a completely deconflicted schedule, but rather wish to accommodate the

majority of students' time/day preferences. Intercollegiate athletic practice, part-time or full-time jobs, and so forth, may make certain day/time scenarios more or less attractive.

Appendix A

Complete 1998 Spring Quarter Schedule

Below is the completed schedule, assigning all courses to days, times and room group. Individual rooms within each group may be assigned arbitrarily or by departmental policy.

	Course		Instructor	Days	Times	Room Groups
MATH	508	01	BAKER	MTWR	0900-1000	2
MATH	521	01	WOOD	MTWF	0800-0900	5
MATH	633	01	LAIR	MTWF	1300-1400	2
MATH	674	01	CHILTON	MTWR	0900-1000	2
MATH	705	01	OXLEY	MWRF	0900-1000	5
STAT	528	01	REYNOLDS	MWF	1600-1700	3
STAT	528	01	REYNOLDS	T	0800-1000	9
STAT	583	91	CROWN	MTWF	0900-1000	5
STAT	696	01	CROWN	TWF	1300-1400	2
STAT	696	91	CROWN	T	1400-1600	9
STAT	696	02	REID	MWF	1300-1400	2
STAT	696	92	REID	T	1000-1200	9
CSCE	532	01	POTOCZNY	MW	1200-1400	2
CSCE	544	01	POTOCZNY	TF	1000-1200	4
CSCE	595	01	GRAHAM	TF	1400-1600	2
CSCE	595	91	GRAHAM	R	1300-1600	6
CSCE	623	01	BANKS	MW	1400-1600	3
CSCE	646	01	TALBERT	TF	1200-1400	3
CSCE	654	01	RAINES	MW	1400-1600	2
CSCE	656	01	LAMONT	TF	1200-1400	3
CSCE	682	01	STYTZ	TWRF	1600-1700	5
CSCE	683	01	SHOMPER	TF	1400-1600	5
CSCE	686	01	LAMONT	MTRF	0800-0900	4
CSCE	698	01	RAINES	R	1000-1100	7
CSCE	793	01	HARTRUM	MW	1000-1200	4
CSCE	793	91	HARTRUM	R	1100-1200	8
EENG	533	01	MILLER	MW	1000-1200	3
EENG	533	91	MILLER	R	1300-1500	6
EENG	621	01	GUFESTAFSEN	MW	1200-1400	5
EENG	625	01	TERZUOLI	MTWF	1600-1700	6
EENG	629	01	PYATI	MTWF	0900-1000	5
EENG	630	01	COLLINS	MTWF	1400-1500	4
EENG	635	01	LEWANTOWICZ	TR	1000-1200	
EENG	640	01	PATCHER	TF	1100-1300	3
EENG	670	01	TEMPLE	TF	1200-1400	3
EENG	695	01	GELOSH	TF	1300-1500	3
EENG	695	91	GELOSH	R	1300-1600	6
EENG	698	01	TEMPLE	R	1000-1100	8
EENG	700	01	TERZUOLI	R	1200-1300	6
EENG	708	01	PATCHER	MW	1200-1400	3
EENG	766	01	MAYBECK	TF	0900-1100	5

CHEM	585	01	BURGGRAF	MTRF	1000-1100	4
CHEM	675	01	WOLF	MTWF	1400-1500	5
EVSC	560	01	BURGGRAF	MTRF	1100-1200	1
EVSC	670	01	MATHEWS	TWRF	1400-1500	5
METG	630	01	ASKUE	M	1300-1500	3
METG	630	91	ASKUE	TR	1300-1600	9
METG	642	01	DUNGEY	MTWR	1200-1300	2
METG	798	01	DUNGEY	W	1500-1600	7
NENG	560	01	SUSALLA	MW	1000-1200	5
NENG	631	01	SUSALLA	TR	0900-1100	5
OENG	620	01	ROH	MTWF	0900-1000	2
OENG	650	01	HENGHEOLD	TWRF	1100-1200	1
PHYS	519	01	GOLDIZEN	MTWF	1000-1100	2
PHYS	542	01	ROH	MWF	1400-1500	2
PHYS	542	91	ROH	R	1300-1600	2
PHYS	650	01	BAILEY	MTWR	1000-1100	2
PHYS	798	01	LARGENT	M	1300-1400	8
OPER	403	01	MILLER	R	1300-1500	7
OPER	561	01	BAUER	TR	1100-1300	4
OPER	561	02	BAILEY	MW	1000-1200	4
OPER	561	03	MILLER	MW	0900-1100	1
OPER	601	01	DECKRO	R	0900-1000	5
OPER	610	01	CHAN	TWRF	1000-1100	5
OPER	610	02	CHRISSIS	MW	1400-1600	4
OPER	610	03	MOORE	MW	1400-1600	4
OPER	645	01	KLOBER	MW	0800-1000	4
EMGT	571	01	GILL	MW	1200-1400	1
ENVR	503	01	LOFGREN	T	0900-1000	2
ENVR	535	01	NIXON	TR	1300-1500	3
ENVR	621	01	SHELLEY	TR	0900-1100	3
ENVR	623	01	BLECKMAN	MW	0800-1000	3
MECH	533	01	AGNES	MWF	1400-1500	3
MECH	605	01	PALAZOTTO	TR	1100-1300	5
MECH	620	01	POHL	MW	0800-1000	5
MECH	628	01	LIEBST	TF	1500-1700	4
MECH	636	01	WIESEL	MW	1100-1300	1
MECH	642	01	TURCOTTE	MTWF	1000-1100	3
MECH	723	01	SPENNY	MTWF	0800-0900	2
MENG	531	01	LITTLE	MTWF	1300-1400	3
MENG	732	01	KING	TWRF	1400-1500	3
SENG	535	01	KRAMER	R	0900-1200	6
SENG	665	01	HEISE	MTWR	0900-1000	3

Appendix B

Electronic Questionnaire Source Code

This appendix contains the visual basic modules used to generate the electronic questionnaire used by EDSSS to capture faculty day/time preferences and non-preferences, as well as room group preferences. The modules were written in MS Excel 97.

This subroutine hides specific worksheets when file is opened

```
Sub Auto_Open()  
Worksheets("Data").Visible = False  
DialogSheets("dlgFacultyInput").Visible = False  
DialogSheets("dlgPref1").Visible = False  
DialogSheets("dlgPref2").Visible = False  
DialogSheets("dlgPref3").Visible = False  
DialogSheets("dlgPref4").Visible = False  
DialogSheets("dlgInstr1").Visible = False  
DialogSheets("dlgInstr2").Visible = False  
DialogSheets("dlgInstr3").Visible = False  
DialogSheets("dlgInstr4").Visible = False  
DialogSheets("dlgThanks").Visible = False  
Modules("modQuest").Visible = False  
End Sub
```

This subroutine displays hidden worksheets

```
Sub UnHide()  
Worksheets("Data").Visible = True  
DialogSheets("dlgFacultyInput").Visible = True  
DialogSheets("dlgPref1").Visible = True  
DialogSheets("dlgPref2").Visible = True  
DialogSheets("dlgPref3").Visible = True  
DialogSheets("dlgPref4").Visible = True  
DialogSheets("dlgInstr1").Visible = True  
DialogSheets("dlgInstr2").Visible = True  
DialogSheets("dlgInstr3").Visible = True
```

```

DialogSheets("dlgInstr4").Visible = True
DialogSheets("dlgThanks").Visible = True
Modules("modQuest").Visible = True
End Sub

```

This subroutine shows the instructions dialogue box

```

Sub ShowInstructions()
If DialogSheets("dlgInstr1").Show = True Then
If DialogSheets("dlgInstr2").Show = True Then
If DialogSheets("dlgInstr3").Show = True Then
DialogSheets("dlgInstr4").Show
End If
End If
End If
End Sub

```

This subroutine shows the preferences dialogue box and captures the inputs by the user

```

Sub ShowDialog()

With DialogSheets("dlgFacultyInput")
If .Show = True Then
Instructor = .EditBoxes("txtInstructor").Text
Course = .EditBoxes("txtCourse").Text
Dept = .DropDowns("drpDepartment").Value
If .OptionButtons("optHour1").Value = 1 Then
With DialogSheets("dlgPref1")
If .Show = True Then
hrPerWeek = 1
daysP1 = .DropDowns("drpDaysP1").Value
daysP2 = .DropDowns("drpDaysP2").Value
daysP3 = .DropDowns("drpDaysP3").Value
daysNP1 = .DropDowns("drpDaysNP1").Value
daysNP2 = .DropDowns("drpDaysNP2").Value
daysNP3 = .DropDowns("drpDaysNP3").Value
timeP1 = .DropDowns("drpTimesP1").Value
timeP2 = .DropDowns("drpTimesP2").Value
timeP3 = .DropDowns("drpTimesP3").Value
timeNP1 = .DropDowns("drpTimesNP1").Value
timeNP2 = .DropDowns("drpTimesNP2").Value
timeNP3 = .DropDowns("drpTimesNP3").Value
roomP1 = .DropDowns("drpRoomsP1").Value
roomP2 = .DropDowns("drpRoomsP2").Value
roomP3 = .DropDowns("drpRoomsP3").Value
dayWgt = .EditBoxes("txtDayWgt").Text
feedbck = .EditBoxes("txtComments").Text
DialogSheets("dlgThanks").Show
Else
Worksheets("INTERFACE").Activate
End If
End With
End If
If .OptionButtons("optHour2").Value = 1 Then
With DialogSheets("dlgPref2")
If .Show = True Then

```

```

        hrPerWeek = 2
        daysP1 = .DropDowns("drpDaysP1").Value
        daysP2 = .DropDowns("drpDaysP2").Value
        daysP3 = .DropDowns("drpDaysP3").Value
        daysNP1 = .DropDowns("drpDaysNP1").Value
        daysNP2 = .DropDowns("drpDaysNP2").Value
        daysNP3 = .DropDowns("drpDaysNP3").Value
        timeP1 = .DropDowns("drpTimesP1").Value
        timeP2 = .DropDowns("drpTimesP2").Value
        timeP3 = .DropDowns("drpTimesP3").Value
        timeNP1 = .DropDowns("drpTimesNP1").Value
        timeNP2 = .DropDowns("drpTimesNP2").Value
        timeNP3 = .DropDowns("drpTimesNP3").Value
        roomP1 = .DropDowns("drpRoomsP1").Value
        roomP2 = .DropDowns("drpRoomsP2").Value
        roomP3 = .DropDowns("drpRoomsP3").Value
        dayWgt = .EditBoxes("txtDayWgt").Text
        feedbck = .EditBoxes("txtComments").Text
        DialogSheets("dlgThanks").Show
    Else
        Worksheets("INTERFACE").Activate
    End If
End With
End If
If .OptionButtons("optHour3").Value = 1 Then
    With DialogSheets("dlgPref3")
        If .Show = True Then
            hrPerWeek = 3
            daysP1 = .DropDowns("drpDaysP1").Value
            daysP2 = .DropDowns("drpDaysP2").Value
            daysP3 = .DropDowns("drpDaysP3").Value
            daysNP1 = .DropDowns("drpDaysNP1").Value
            daysNP2 = .DropDowns("drpDaysNP2").Value
            daysNP3 = .DropDowns("drpDaysNP3").Value
            timeP1 = .DropDowns("drpTimesP1").Value
            timeP2 = .DropDowns("drpTimesP2").Value
            timeP3 = .DropDowns("drpTimesP3").Value
            timeNP1 = .DropDowns("drpTimesNP1").Value
            timeNP2 = .DropDowns("drpTimesNP2").Value
            timeNP3 = .DropDowns("drpTimesNP3").Value
            roomP1 = .DropDowns("drpRoomsP1").Value
            roomP2 = .DropDowns("drpRoomsP2").Value
            roomP3 = .DropDowns("drpRoomsP3").Value
            dayWgt = .EditBoxes("txtDayWgt").Text
            feedbck = .EditBoxes("txtComments").Text
            DialogSheets("dlgThanks").Show
        Else
            Worksheets("INTERFACE").Activate
        End If
    End With
End If
If .OptionButtons("optHour4").Value = 1 Then
    With DialogSheets("dlgPref4")
        If .Show = True Then
            hrPerWeek = 4
            daysP1 = .DropDowns("drpDaysP1").Value

```

```

        daysP2 = .DropDowns("drpDaysP2").Value
        daysP3 = .DropDowns("drpDaysP3").Value
        daysNP1 = .DropDowns("drpDaysNP1").Value
        daysNP2 = .DropDowns("drpDaysNP2").Value
        daysNP3 = .DropDowns("drpDaysNP3").Value
        timeP1 = .DropDowns("drpTimesP1").Value
        timeP2 = .DropDowns("drpTimesP2").Value
        timeP3 = .DropDowns("drpTimesP3").Value
        timeNP1 = .DropDowns("drpTimesNP1").Value
        timeNP2 = .DropDowns("drpTimesNP2").Value
        timeNP3 = .DropDowns("drpTimesNP3").Value
        roomP1 = .DropDowns("drpRoomsP1").Value
        roomP2 = .DropDowns("drpRoomsP2").Value
        roomP3 = .DropDowns("drpRoomsP3").Value
        dayWgt = .EditBoxes("txtDayWgt").Text
        feedbck = .EditBoxes("txtComments").Text
        DialogSheets("dlgThanks").Show
    Else
        Worksheets("INTERFACE").Activate
    End If
End With
End If

```

```

Worksheets("DATA").Cells(3, 1).Value = Instructor
Worksheets("DATA").Cells(3, 2).Value = Course
Worksheets("DATA").Cells(3, 3).Value = Dept
Worksheets("DATA").Cells(3, 4).Value = hrPerWeek
Worksheets("DATA").Cells(3, 5).Value = dayWgt
Worksheets("DATA").Cells(3, 6).Value = 1 - Val(dayWgt)
Worksheets("DATA").Cells(3, 7).Value = daysP1
Worksheets("DATA").Cells(3, 8).Value = timeP1
Worksheets("DATA").Cells(3, 9).Value = roomP1
Worksheets("DATA").Cells(3, 10).Value = daysP2
Worksheets("DATA").Cells(3, 11).Value = timeP2
Worksheets("DATA").Cells(3, 12).Value = roomP2
Worksheets("DATA").Cells(3, 13).Value = daysP3
Worksheets("DATA").Cells(3, 14).Value = timeP3
Worksheets("DATA").Cells(3, 15).Value = roomP3
Worksheets("DATA").Cells(3, 16).Value = daysNP1
Worksheets("DATA").Cells(3, 17).Value = timeNP1
Worksheets("DATA").Cells(3, 18).Value = daysNP2
Worksheets("DATA").Cells(3, 19).Value = timeNP2
Worksheets("DATA").Cells(3, 20).Value = daysNP3
Worksheets("DATA").Cells(3, 21).Value = timeNP3
Worksheets("DATA").Cells(3, 22).Value = feedbck
End If
End With
End Sub

```

Appendix C

Problem Generator Source Code

This appendix contains the visual basic modules used in the problem generator portion of EDSSS to write the Mixed Integer Program shown by Problem P2 in Mathematical Programming System (MPS) format. The modules were written in MS Excel 97.

This subroutine hides specific spreadsheets when the document is opened

```
Sub AutoOpen()  
  ThisWorkbook.Activate  
  With ActiveWorkbook  
    Worksheets(2).Visible = False  
    Worksheets(3).Visible = False  
    Worksheets(4).Visible = False  
    Worksheets(5).Visible = False  
    Worksheets(6).Visible = False  
    Worksheets(7).Visible = False  
  End With  
End Sub
```

This subroutine unhides the spreadsheets hidden upon opening

```
Sub UnHide()  
  ThisWorkbook.Activate  
  With ActiveWorkbook  
    Worksheets(2).Visible = True  
    Worksheets(3).Visible = True  
    Worksheets(4).Visible = True  
    Worksheets(5).Visible = True  
    Worksheets(6).Visible = True  
    Worksheets(7).Visible = True  
  End With  
End Sub
```

This subroutine is the main routine and calls the other main routines in the correct order

```
Sub Schedule()  
  MsgBox (Now())  
  Call EdPlans  
  Call Variables  
  Call WriteMps  
  MsgBox (Now())  
End Sub
```

This subroutine puts the Value table into the correct format for processing.

```
Sub FormatTable()  
  Worksheets("Vbl Def").Select  
  With ActiveSheet  
    Set eeRange = Range("M1:R83")  
    For Each C In eeRange  
      If C.Value <> "" Then  
        If Len(LTrim(Str(C.Value))) = 1 Then C.Value = "00" & LTrim(Str(C.Value))  
        If Len(LTrim(Str(C.Value))) = 2 Then C.Value = "0" & LTrim(Str(C.Value))  
        If Len(LTrim(Str(C.Value))) = 3 Then C.Value = "" & LTrim(Str(C.Value))  
      End If  
    Next C  
  End With  
End Sub
```

This subroutine writes all the variables in the variable list

```
Sub WriteVbls()  
  Worksheets("Vbl Def").Select  
  With ActiveSheet  
    Set clearRange = Range("A1:G10000")  
    clearRange.ClearContents  
    clearRange.Font.Bold = False  
  
    i = 1  
    Do Until Cells(i, 10) = ""  
      C = 1 + (i - 1) * 18  
      Cells(C, 1).Value = Cells(i, 10).Value  
      j = 1  
      Do Until Cells(i, 12 + j) = "" Or j > 6  
        d = C + (j - 1) * 3  
        Cells(d, 2).Value = Cells(i, 12 + j).Value  
        If Cells(i, 12 + j).Font.Bold = True Then  
          Cells(d, 2).Font.Bold = True  
        End If  
        k = 1  
        Do Until Cells(i, 18 + k) = "" Or k > 3  
          e = d + k - 1  
          Cells(e, 4).Value = Cells(i, 18 + k).Value  
          If Cells(i, 18 + k).Font.Bold = True Then  
            Cells(e, 4).Font.Bold = True  
          End If  
          Cells(e, 6).Value = "x" & Cells(i, 10) & Cells(i, 12 + j) & Cells(i, 18 + k)
```

```

        k = k + 1
    Loop
    j = j + 1
Loop
i = i + 1
Loop
End With
End Sub

```

'Writes objective value for each variable

```

Sub PutValues()
Worksheets("Vbl Def").Select
With ActiveSheet
    i = 1
    j = 1
    Do While i < 10000 And j < 10000
        If Cells(i, 2) <> "" Then
            If Cells(i, 2).Font.Bold = True Then
                ScenValue = 0.333
            Else
                ScenValue = GetScenValue(i)
            End If
            Cells(i, 3).Value = ScenValue
            Cells(i + 1, 3).Value = ScenValue
            Cells(i + 2, 3).Value = ScenValue
            i = i + 3
        Else
            i = i + 3
        End If
        If Cells(j, 4) <> "" Then
            If Cells(j, 4).Font.Bold = True Then
                RoomValue = 0.333
            Else
                RoomValue = GetRoomValue(j)
            End If
            Cells(j, 5).Value = RoomValue
            j = j + 1
        Else
            j = j + 1
        End If
    Loop

    k = 1
    m = 1
    Do While k < 10000
        If Cells(k, 6) <> "" Then
            impact = (Cells(m, 11).Value * Cells(k, 3) + Cells(m, 12).Value * Cells(k, 5)) *
Cells(m, 22) * 100000
            Cells(k, 7).Value = Int(impact)
            k = k + 1
        Else
            k = k + 1
        End If
        If k Mod 18 = 1 Then m = m + 1
    Loop

```

```
End With
End Sub
```

```
Function GetScenValue(vrow)
    p = vrow Mod 18
    If p = 1 Then GetScenValue = 1
    If p = 4 Then GetScenValue = 1
    If p = 7 Then GetScenValue = 0.833
    If p = 10 Then GetScenValue = 0.833
    If p = 13 Then GetScenValue = 0.667
    If p = 16 Then GetScenValue = 0.667
End Function
```

```
Function GetRoomValue(vrow)
    p = vrow Mod 18
    If p = 1 Then GetRoomValue = 1
    If p = 2 Then GetRoomValue = 0.833
    If p = 3 Then GetRoomValue = 0.667
    If p = 4 Then GetRoomValue = 1
    If p = 5 Then GetRoomValue = 0.833
    If p = 6 Then GetRoomValue = 0.667
    If p = 7 Then GetRoomValue = 1
    If p = 8 Then GetRoomValue = 0.833
    If p = 9 Then GetRoomValue = 0.667
    If p = 10 Then GetRoomValue = 1
    If p = 11 Then GetRoomValue = 0.833
    If p = 12 Then GetRoomValue = 0.667
    If p = 13 Then GetRoomValue = 1
    If p = 14 Then GetRoomValue = 0.833
    If p = 15 Then GetRoomValue = 0.667
    If p = 16 Then GetRoomValue = 1
    If p = 17 Then GetRoomValue = 0.833
    If p = 0 Then GetRoomValue = 0.667
End Function
```

'This subroutine puts the value list in the correct format

```
Sub FormatList()
    Worksheets("Vbl Def").Select
    With ActiveSheet
        Set ddRange = Range("A1:B10000")
        For Each C In ddRange
            If C.Value <> "" Then
                If Len(LTrim(Str(C.Value))) = 1 Then C.Value = "00" & LTrim(Str(C.Value))
                If Len(LTrim(Str(C.Value))) = 2 Then C.Value = "0" & LTrim(Str(C.Value))
                If Len(LTrim(Str(C.Value))) = 3 Then C.Value = "" & LTrim(Str(C.Value))
            End If
        Next C
    End With
End Sub
```

'Subroutine called by Schedule

```
Public Sub Variables()
    Call FormatTable
    Call WriteVbls
```

```

    Call PutValues
    Call FormatList
End Sub

```

```

Dim mpsrow As Integer
Dim conCourCol As Integer
Dim conScenCol As Integer
Dim mpsPath As String
Dim mpsFileName As String

```

```

Dim numvbls As Integer
Dim numcourses As Integer
Dim numscenarios As Integer
Dim scenRange As Range
Dim courRange As Range
Dim vblCourRange As Range
Dim vblScenRange As Range
Dim vblRoomRange As Range
Dim vblVblRange As Range

```

'Sets certain constants provided by the user on the "Code Data"
'spreadsheet

```

Sub GetConstants()
    numcourses = Sheets("Code Data").Cells(2, 3)
    numscenarios = Sheets("Code Data").Cells(3, 3)
    numvbls = Sheets("Code Data").Cells(5, 3)
    mpsPath = Worksheets("Code Data").Cells(6, 3)
    mpsFileName = Worksheets("Code Data").Cells(7, 3)
    Set scenRange = Worksheets("Scenario Confl").Range("A1:IV1")
    Set courRange = Worksheets("Course Confl").Range("A1:IV1")
    Set vblCourRange = Worksheets("Vbl Def").Range("A1:A1530")
    Set vblScenRange = Worksheets("Vbl Def").Range("B1:B1530")
    Set vblRoomRange = Worksheets("Vbl Def").Range("D1:D1530")
    Set vblVblRange = Worksheets("Vbl Def").Range("F1:F1520")
End Sub

```

'This subroutine opens the output file named schedmps.mps where
'the mps data will be written.

```

Sub OpenOutFile()
    mpsFile = mpsPath & mpsFileName
    Open mpsFile For Output As #9
    '    1234567890123456789012345
    Print #9, "NAME      SchedMps FREE"
    Print #9, "ROWS"
    Print #9, " N   obj"
End Sub

```

'This subroutine writes to schedmps the ROWS portion of the .mps file.

'Where:

'axpppij are the one assignment per course "ppp" constraints

'dxpppqqqi are the deconfliction constraints associated with course

' "ppp" and time scenario "qqq"

'rhhg are the room resource constraints associated with time slot

' "hh" and room group "g"

Sub WriteRows()

Worksheets("Vbl Def").Select
With ActiveSheet

'Writes the single assignments rows

i = 1

Do Until i > numvbls

 If Cells(i, 6).Value = "" Then

 i = i + 18

 Else

 Print #9, " E " & "a" & Left(Cells(i, 6), 4) & "ij"

 i = i + 18

 End If

Loop

'Writes the deconfliction rows

j = 1

Do Until j > numvbls

 If Cells(j, 6).Value = "" Then

 j = j + 3

 Else

 Print #9, " L " & "d" & Left(Cells(j, 6), 7) & "i"

 j = j + 3

 End If

Loop

'Writes the room resource rows, 45 time slots per week &
'9 different room groups

k = 1

Do Until k > 45

 l = 1

 Do Until l > 9

 If Len(LTrim(Str(k))) = 1 Then

 timeslot = "0" & LTrim(Str(k))

 Else

 timeslot = LTrim(Str(k))

 End If

 Print #9, " L " & "r" & timeslot & l

 l = l + 1

 Loop

 k = k + 1

Loop

End With

End Sub

'Retrieves the three digit scenario number "sss" from the variable
'of the type xccc,sss,r

Function IsolateScenario(variable)

 IsolateScenario = Mid(variable, 5, 3)

End Function

'Retrieves the three digit course number "ccc" from the variable

'of the type xccc,sss,r

```
Function IsolateCourse(variable)
  IsolateCourse = Mid(variable, 2, 3)
End Function
```

'Matches the current scenario with the same scenario on the
"Scenario Confl" spreadsheet

```
Function ScenarioCol(scenario)
  If TypeName(scenRange.Find(scenario)) = "Range" Then
    ScenarioCol = scenRange.Find(scenario).column
  Else
    ScenarioCol = 9999
  End If
End Function
```

'Matches the current course with the same course on the
"Course Confl" spreadsheet

```
Function CourseCol(courseNumber)
  If TypeName(courRange.Find(courseNumber)) = "Range" Then
    CourseCol = courRange.Find(courseNumber).column
  Else
    CourseCol = 9999
  End If
End Function
```

'Isolates a single Day from a string of Days

```
Function EachDay(days, x)
  EachDay = Mid(days, x, 1)
End Function
```

'Writes the Initial Columns for the .mps file

```
Sub InitialColumnEntry(ByVal variable, ByVal impact)
  Print #9, " " & variable & " obj" & " " & impact
  Print #9, " " & variable & " a" & Left(variable, 4) & "ij" & " 1.0"
  Print #9, " " & variable & " d" & Left(variable, 7) & "i" & " 100.0"
End Sub
```

'Writes the deconflition columns, i.e. any course and time to which
'the current variable is conflicted a 1.0 is placed in that column

```
Sub DeconColumnEntry(ByVal variable)
  Dim scenConflicts(1 To 100) As String
  Dim courConflicts(1 To 100) As String
```

```
'Gets the scenario and course number for the variable
courseNum = IsolateCourse(variable)
scenario = IsolateScenario(variable)
```

```
'Reads into an array all of the scenarios that conflict with
'the current variable's scenario
```

```
i = 3
```

```

scencol = ScenarioCol(scenario)
Do Until Worksheets("Scenario Confl").Cells(i, scencol).Value = ""
    scenConflicts(i) = Worksheets("Scenario Confl").Cells(i, scencol)
    i = i + 1
Loop

```

```

'Reads into an array all of the courses that conflict with the
'current variable's course
j = 3
courCol = CourseCol(courseNum)
Do Until Worksheets("Course Confl").Cells(j, courCol).Value = ""
    courConflicts(j) = Worksheets("Course Confl").Cells(j, courCol)
    j = j + 1
Loop

```

'Checks for both course confliction and scenario confliction
'and writes the coulumn variable for the conflicted row if
'both course and scenario are indeed conflicted

```

Worksheets("Vbl Def").Select
With ActiveSheet
k = 1
Do While k <= j - 1
    If TypeName(vblCourRange.Find(courConflicts(k))) = "Range" Then
        conCourrow = vblCourRange.Find(courConflicts(k)).row
        l = 1
        Do While l <= i
            endrow = conCourrow + 17
            z = conCourrow
            Do While z <= endrow And scenConflicts(l) <> ""
                inside = i
                If Cells(z, 2) = scenConflicts(l) Then
                    Print #9, " " & variable & " " & "d" & Left(Sheets("Vbl Def").Cells(z,
6).Value, 7) & "i" & " " 1.0"
                    z = conCourrow + 20
                Else
                    z = z + 3
                End If
            Loop
            l = l + 1
        Loop
        End If
        k = k + 1
    Loop
End With
End Sub

```

'Writes the room resource columns in the .mps file

```

Sub RoomColumnEntry(variable)
    roomgrp = Right(variable, 1)
    scenario = IsolateScenario(variable)
    scencol = ScenarioCol(scenario)

```

'Gets the days involved in the current scenario

```

i = 1
scendays = Sheets("Scenario Confl").Cells(2, scencol)

'Determines what hour/day slots the scenario will use

Do While i <= Len(scendays)
  d = EachDay(scendays, i)
  If d = "M" Then dayindex = 1
  If d = "T" Then dayindex = 10
  If d = "W" Then dayindex = 18
  If d = "R" Then dayindex = 26
  If d = "F" Then dayindex = 34

  hour1 = Sheets("Scenario Confl").Cells(3, scencol)
  hour2 = Sheets("Scenario Confl").Cells(4, scencol)
  hour3 = Sheets("Scenario Confl").Cells(5, scencol)

  'Gives time slot index, from 1 to 45 corresponding to
  'whole hours from M at 0800 (Index 1) to F 1600 (Index 45)

  timeslot1 = LTrim(Str((dayindex + (hour1 - 8))))
  If Len(timeslot1) = 1 Then timeslot1 = "0" + timeslot1

  RoomCon1 = "r" + timeslot1 + roomgrp
  Print #9, " " & variable & " " & RoomCon1 & " 1.0"

  If hour2 <> "0" Then
    timeslot2 = LTrim(Str((dayindex + (hour2 - 8))))
    If Len(timeslot2) = 1 Then timeslot2 = "0" + timeslot2
    RoomCon2 = "r" + timeslot2 + roomgrp
    Print #9, " " & variable & " " & RoomCon2 & " 1.0"
  End If

  If hour3 <> "0" Then
    timeslot3 = LTrim(Str((dayindex + (hour3 - 8))))
    If Len(timeslot3) = 1 Then timeslot3 = "0" + timeslot3
    RoomCon3 = "r" + timeslot3 + roomgrp
    Print #9, " " & variable & " " & RoomCon3 & " 1.0"
  End If
  i = i + 1
Loop
End Sub

'Writes the COLUMNS portion of the .mps File

Sub WriteColumns()

  Print #9, "COLUMNS"

  'Tells solver, all the variable will be integer

  Print #9, " MARK000 'MARKER' 'INTORG'"

  'Counter for number of variables
  i = 1

```

```

Do While i <= numvbls
  variable = Sheets("Vbl Def").Cells(i, 6).Value
  If variable = "" Then
    i = i + 1
  Else
    impact = Sheets("Vbl Def").Cells(i, 7).Value

    Call InitialColumnEntry(variable, impact)

    Call DeconColumnEntry(variable)

    Call RoomColumnEntry(variable)

    i = i + 1

  End If
Loop

'Writes the neurtal variables

j = 1
Do While j <= numvbls
  If Sheets("Vbl Def").Cells(j, 6).Value <> "" Then
    variable = Sheets("Vbl Def").Cells(j, 6).Value
    Print #9, "  " & Left(variable, 4) & "000n" & "  " & "a" & Left(variable, 4) & "ij" & "
1.0"
    j = j + 18
  End If
Loop

Print #9, " MARK001 'MARKER' 'INTEND'"

End Sub

'Determines the number of rooms in the room group "grp"

Function GetRoomcap(grp)
  If grp = 1 Then GetRoomcap = 2
  If grp = 2 Then GetRoomcap = 4
  If grp = 3 Then GetRoomcap = 4
  If grp = 4 Then GetRoomcap = 2
  If grp = 5 Then GetRoomcap = 3
  If grp = 6 Then GetRoomcap = 3
  If grp = 7 Then GetRoomcap = 1
  If grp = 8 Then GetRoomcap = 1
  If grp = 9 Then GetRoomcap = 1
End Function

'Writes the RHS portion of the .mps file

Sub WriteRHS()

  Worksheets("Vbl Def").Select
  With ActiveSheet
    Print #9, "RHS"
  End With
End Sub

```

```

'Writes the single assignments rhs
i = 1
Do Until i > numvbls
  If Cells(i, 6).Value = "" Then
    i = i + 18
  Else
    Print #9, "  rhs  " & "a" & Left(Cells(i, 6), 4) & "ij" & "  1.0"
    i = i + 18
  End If
Loop

'Writes the deconfliction rhs
j = 1
Do Until j > numvbls
  If Cells(j, 6).Value = "" Then
    j = j + 3
  Else
    Print #9, "  rhs  " & "d" & Left(Cells(j, 6), 7) & "i" & "  100.0"
    j = j + 3
  End If
Loop

'Writes the room resource rhs, 45 time slots per week &
'9 different room groups
k = 1
Do Until k > 45
  l = 1
  Do Until l > 9
    If Len(LTrim(Str(k))) = 1 Then
      timeslot = "0" & LTrim(Str(k))
    Else
      timeslot = LTrim(Str(k))
    End If
    roomcap = GetRoomcap(l)
    Print #9, "  rhs  " & "r" & timeslot & l & "  " & roomcap
    l = l + 1
  Loop
  k = k + 1
Loop

End With

End Sub

'Closes the output file mpsfile

Sub CloseOutFile()
  Print #9, "ENDATA"
  Close #9
End Sub

Public Sub WriteMps()
  Call GetConstants
  Call OpenOutFile
  Call WriteRows
  Call WriteColumns

```

```

    Call WriteRHS
    Call CloseOutFile
End Sub
'Variables used by two or more subroutines in this module

```

```

Dim maxstudents As Integer
Dim numcours As Integer

```

'This subroutine combines the course name and number and section

```

Sub CombineDeptNumber()
    i = 1
    Worksheets("Ed Plans").Select
    With ActiveSheet
        Do While Cells(i, 2).Value <> ""
            Cells(i, 8).Value = Cells(i, 2).Value & " " & Cells(i, 3).Value & Cells(i, 4).Value
            i = i + 1
        Loop
    End With
End Sub

```

'This subroutine develops the course deconfliction matrix rows

```

Sub DevelopCourseConflicts()
    i = 1
    r = 1
    maxstudents = 0
    Set clearRange = Worksheets("Course SSNs").Range("A1:IV3000")
    clearRange.Clear
    Worksheets("Ed Plans").Select
    With ActiveSheet
        Do While Cells(i, 8).Value <> ""
            course = Cells(i, 8).Value
            j = 0
            m = i
            Do While Cells(m, 8).Value = course
                j = j + 1
                m = m + 1
            Loop
            If j > maxstudents Then maxstudents = j
            Worksheets("Course SSNs").Cells(r, 1).Value = Cells(i, 8).Value
            Worksheets("Course SSNs").Cells(r, 2).Value = Cells(i, 1).Value
            l = i
            k = 3
            Do While l < i + j
                Worksheets("Course SSNs").Cells(r, k).Value = Cells(l, 5).Value
                l = l + 1
                k = k + 1
            Loop
            i = i + j
            r = r + 1
        Loop
    End With
End Sub

```

'This subroutine formats the matrix area

```

Sub InsertRows()
    endrange = maxstudents + 2
    Worksheets("Course SSNs").Select
    With ActiveSheet
        Set xRange = Range(Cells(1, endrange), Cells(endrange, endrange))
        xRange.Select
        Selection.EntireRow.Insert
    End With
End Sub

```

This subroutine lists the columns portion of the matrix

```

Sub Transpose()
    endrange = maxstudents + 2
    Worksheets("Course SSNs").Select
    With ActiveSheet
        blanks = 0
        i = 1
        Do Until Cells(i, 1) <> ""
            blanks = blanks + 1
            i = i + 1
        Loop
        Do Until Cells(i, 1) = ""
            courses = courses + 1
            i = i + 1
        Loop
        numcours = courses
        Set zRange = Range(Cells(blanks + 1, 1), Cells(blanks + courses, endrange))
        zRange.Copy
        Cells(1, (endrange + 2)).Select
        Selection.PasteSpecial Paste:=xlAll, Operation:=xlNone, SkipBlanks:=False _
            , Transpose:=True
    End With
End Sub

```

This subroutine fills in the course deconfliction matrix

```

Sub WriteMatrix()
    i = maxstudents + 3
    Worksheets("Course SSNs").Select
    With ActiveSheet
        Do Until Cells(i, 1) = ""
            j = 3
            Do Until Cells(i, j) = ""
                k = maxstudents + 4
                Do Until Cells(1, k).Value = ""
                    l = 3
                    Do While l <= maxstudents + 2
                        If Cells(i, j).Value = Cells(l, k).Value Then
                            Cells(i, k) = 1
                        End If
                        l = l + 1
                    Loop
                    k = k + 1
                Loop
            Loop
        Loop
    End With
End Sub

```

```

        j = j + 1
    Loop
    i = i + 1
Loop
End With
End Sub

```

This subroutine writes the confliction lists for each course

```

Sub WriteCourConflicts()
    maxstudents = 36
    numcours = 83
    Worksheets("Course SSNs").Select
    With ActiveSheet
        k = 0
        Set courseIDRange = Range(Cells(2, (maxstudents + 4)), Cells(2, 247))
        courseIDRange.Copy
        Worksheets("Course Confl").Select
        With ActiveSheet
            Cells(1, 1).Select
            ActiveSheet.Paste
        End With
        Worksheets("Course SSNs").Select
        Set matrixRange2 = Range(Cells(maxstudents + 3, maxstudents + 4), Cells(maxstudents +
numcours + 3, maxstudents + numcours + 4))
        matrixRange2.Select
        For Each C In matrixRange2
            If C.Value = 1 Then
                i = C.Row
                j = C.Column
                If Cells(i, 2) <> Cells(2, j) Then
                    listColumn = j - (maxstudents + 3)
                    Worksheets("Course Confl").Select
                    With ActiveSheet
                        Range(Cells(3, listColumn), Cells(103, listColumn)).Copy
                        Cells(4, listColumn).Select
                        ActiveSheet.Paste
                    End With
                    Worksheets("Course Confl").Cells(3, listColumn).Value = Worksheets("Course
SSNs").Cells(i, 2).Value
                    Worksheets("Course SSNs").Select
                End If
            End If
        Next C
    End With
End Sub

```

This subroutine calls the other subroutines in this model to develop
the course deconfliction matrix and lists

```

Public Sub EdPalns()
    MsgBox Now()
    Call CombineDeptNumber
    Call DevelopCourseConflicts
    Call InsertRows
    Call Transpose

```

```
Call WriteMatrix
Call WriteCourConflicts
MsgBox Now()
End Sub
```

Appendix D

OsI Output For "Equal Weighting" Scheduling Variation

Run # 1 - Scheduling Variation with Departments Weighted Equally

EKK0008I Description of Problem SchedMps
EKK0016I Matrix has 953 rows, 1398 columns and 13830 entries

EKK0009I Problem Status
EKK0001I Iteration Number: 49775; Objective Value: 84590.00--Optimal

1EKK0011I Columns Section

Page 9

EKK0063I	..Name..	StatActivity.....
EKK0064I	1 x1011905	BS	1.00000000
EKK0064I	23 x1022012	BS	1.00000000
EKK0064I	38 x1032031	FX	1.00000000
EKK0064I	55 x1041902	BS	1.00000000
EKK0064I	73 x1052175	FX	1.00000000
EKK0064I	94 x1061343	FX	1.00000000
EKK0064I	109 x1070549	BS	1.00000000
EKK0064I	115 x1081995	BS	1.00000000
EKK0064I	133 x1091762	BS	1.00000000
EKK0064I	152 x1100609	BS	1.00000000
EKK0064I	157 x1111273	BS	1.00000000
EKK0064I	176 x1120569	BS	1.00000000
EKK0064I	184 x2010902	FX	1.00000000
EKK0064I	202 x2021204	BS	1.00000000
EKK0064I	220 x2031242	FX	1.00000000
EKK0064I	235 x2042456	BS	1.00000000
EKK0064I	253 x2050913	FX	1.00000000
EKK0064I	280 x2061223	BS	1.00000000
EKK0064I	299 x2070924	FX	1.00000000
EKK0064I	316 x2081223	FX	1.00000000
EKK0064I	348 x2101243	FX	1.00000000
EKK0064I	379 x2120307	BS	1.00000000
EKK0064I	384 x2130884	FX	1.00000000

EKK0064I	414	x2140314	BS	1.00000000
EKK0064I	432	x2160756	BS	1.00000000
EKK0064I	449	x2170892	FX	1.00000000
EKK0064I	465	x2182066	BS	1.00000000
EKK0064I	475	x2191993	BS	1.00000000
EKK0064I	492	x2202044	BS	1.00000000
EKK0064I	510	x2221213	BS	1.00000000
EKK0064I	534	x2231223	FX	1.00000000
EKK0064I	543	x2241233	BS	1.00000000
EKK0064I	561	x2252456	FX	1.00000000
EKK0064I	567	x2260308	BS	1.00000000
EKK0064I	569	x2270326	BS	1.00000000
EKK0064I	587	x2280893	BS	1.00000000
EKK0064I	606	x2291191	BS	1.00000000
EKK0064I	630	x3012095	FX	1.00000000
EKK0064I	650	x3022045	FX	1.00000000
EKK0064I	669	x3032105	FX	1.00000000
EKK0064I	678	x3042311	BS	1.00000000
EKK0064I	700	x3050522	BS	1.00000000
EKK0064I	711	x3062379	BS	1.00000000
EKK0064I	723	x3071932	FX	1.00000000
EKK0064I	734	x3080267	BS	1.00000000
EKK0064I	739	x3090885	FX	1.00000000
EKK0064I	754	x3100955	BS	1.00000000
EKK0064I	772	x3111992	FX	1.00000000
EKK0064I	796	x3122283	FX	1.00000000
EKK0064I	811	x3132002	FX	1.00000000
EKK0064I	829	x3141322	FX	1.00000000
EKK0064I	847	x3152452	FX	1.00000000
EKK0064I	861	x3161911	FX	1.00000000
EKK0064I	871	x3170017	FX	1.00000000
EKK0064I	885	x4010767	FX	1.00000000
EKK0064I	887	x4020974	FX	1.00000000
EKK0064I	908	x4030884	FX	1.00000000
EKK0064I	926	x4040881	FX	1.00000000
EKK0064I	944	x4050305	FX	1.00000000
EKK0064I	962	x4062275	FX	1.00000000
EKK0064I	977	x4070924	FX	1.00000000
EKK0064I	992	x4080914	FX	1.00000000
EKK0064I	1010	x4090944	FX	1.00000000
EKK0064I	1037	x5010901	FX	1.00000000
EKK0064I	1046	x5020202	FX	1.00000000
EKK0064I	1070	x5030993	FX	1.00000000
EKK0064I	1085	x5040963	FX	1.00000000
EKK0064I	1103	x5051263	FX	1.00000000
EKK0064I	1121	x6011323	FX	1.00000000
EKK0064I	1145	x6020975	FX	1.00000000

EKK0064I	1154	x6030865	FX	1.00000000
EKK0064I	1172	x6040945	FX	1.00000000
EKK0064I	1192	x6050861	FX	1.00000000
EKK0064I	1223	x6060893	FX	1.00000000
EKK0064I	1235	x6072013	FX	1.00000000
EKK0064I	1247	x6082003	FX	1.00000000
EKK0064I	1265	x6091003	FX	1.00000000
EKK0064I	1287	x6102417	FX	1.00000000
EKK0064I	1301	x6111913	FX	1.00000000
EKK0064I	1336	x209000n	FX	1.00000000
EKK0064I	1338	x211000n	FX	1.00000000
EKK0064I	1342	x215000n	FX	1.00000000
EKK0064I	1348	x221000n	FX	1.00000000

*** An optimal integer solution has been found ***

*** Application terminated ***

Appendix E

OsI Output For "Number Of Courses Weighting" Scheduling Variation

Run # 2 - Scheduling Variation where Department Weights based upon Number of Courses being taught.

EKK0008I Description of Problem SchedMps
EKK0016I Matrix has 953 rows, 1398 columns and 13830 entries

EKK0009I Problem Status

EKK0006I Optimization Subroutine Library Version 1.3 (76162) Page 62

EKK0001I Iteration Number: 65817; Objective Value: 83163.00--Optimal

EKK0011I Columns Section
Page 63

EKK0063I	..Name..	StatActivity.....
EKK0064I	2 x1011902	BS	1.00000000
EKK0064I	22 x1022015	BS	1.00000000
EKK0064I	38 x1032031	FX	1.00000000
EKK0064I	55 x1041902	FX	1.00000000
EKK0064I	73 x1052175	FX	1.00000000
EKK0064I	92 x1061331	BS	1.00000000
EKK0064I	109 x1070549	BS	1.00000000
EKK0064I	115 x1081995	FX	1.00000000
EKK0064I	133 x1091762	BS	1.00000000
EKK0064I	152 x1100609	FX	1.00000000
EKK0064I	157 x1111273	FX	1.00000000
EKK0064I	176 x1120569	BS	1.00000000
EKK0064I	184 x2010902	FX	1.00000000
EKK0064I	202 x2021204	BS	1.00000000
EKK0064I	220 x2031242	BS	1.00000000
EKK0064I	235 x2042456	BS	1.00000000
EKK0064I	256 x2050923	FX	1.00000000
EKK0064I	280 x2061223	FX	1.00000000
EKK0064I	299 x2070924	BS	1.00000000

EKK0064I	316	x2081223	FX	1.00000000
EKK0064I	347	x2101241	BS	1.00000000
EKK0064I	379	x2120307	BS	1.00000000
EKK0064I	384	x2130884	BS	1.00000000
EKK0064I	416	x2140318	FX	1.00000000
EKK0064I	417	x2150873	FX	1.00000000
EKK0064I	432	x2160756	BS	1.00000000
EKK0064I	448	x2170893	BS	1.00000000
EKK0064I	465	x2182066	FX	1.00000000
EKK0064I	474	x2191995	FX	1.00000000
EKK0064I	492	x2202044	BS	1.00000000
EKK0064I	510	x2221213	BS	1.00000000
EKK0064I	534	x2231223	FX	1.00000000
EKK0064I	543	x2241233	FX	1.00000000
EKK0064I	561	x2252456	BS	1.00000000
EKK0064I	567	x2260308	BS	1.00000000
EKK0064I	569	x2270326	FX	1.00000000
EKK0064I	587	x2280893	FX	1.00000000
EKK0064I	605	x2291195	FX	1.00000000
EKK0064I	629	x3012091	BS	1.00000000
EKK0064I	650	x3022045	FX	1.00000000
EKK0064I	668	x3032101	FX	1.00000000
EKK0064I	677	x3042315	BS	1.00000000
EKK0064I	696	x3050511	FX	1.00000000
EKK0064I	711	x3062379	BS	1.00000000
EKK0064I	723	x3071932	FX	1.00000000
EKK0064I	732	x3080277	BS	1.00000000
EKK0064I	739	x3090885	BS	1.00000000
EKK0064I	754	x3100955	BS	1.00000000
EKK0064I	772	x3111992	FX	1.00000000
EKK0064I	796	x3122283	FX	1.00000000
EKK0064I	813	x3132004	FX	1.00000000
EKK0064I	829	x3141322	FX	1.00000000
EKK0064I	847	x3152452	FX	1.00000000
EKK0064I	859	x3161912	BS	1.00000000
EKK0064I	881	x3170067	BS	1.00000000
EKK0064I	883	x4010757	BS	1.00000000
EKK0064I	887	x4020974	BS	1.00000000
EKK0064I	908	x4030884	BS	1.00000000
EKK0064I	926	x4040881	BS	1.00000000
EKK0064I	941	x4050295	FX	1.00000000
EKK0064I	962	x4062275	FX	1.00000000
EKK0064I	977	x4070924	FX	1.00000000
EKK0064I	995	x4080924	FX	1.00000000
EKK0064I	1010	x4090944	FX	1.00000000
EKK0064I	1039	x5010905	FX	1.00000000
EKK0064I	1046	x5020202	FX	1.00000000

EKK0064I	1073	x5031003	FX	1.00000000
EKK0064I	1082	x5040953	FX	1.00000000
EKK0064I	1103	x5051263	FX	1.00000000
EKK0064I	1121	x6011323	FX	1.00000000
EKK0064I	1142	x6020965	FX	1.00000000
EKK0064I	1154	x6030865	FX	1.00000000
EKK0064I	1172	x6040945	FX	1.00000000
EKK0064I	1190	x6050865	FX	1.00000000
EKK0064I	1217	x6060883	FX	1.00000000
EKK0064I	1236	x6072012	FX	1.00000000
EKK0064I	1250	x6082033	FX	1.00000000
EKK0064I	1265	x6091003	FX	1.00000000
EKK0064I	1307	x6111933	FX	1.00000000
EKK0064I	1336	x209000n	FX	1.00000000
EKK0064I	1338	x211000n	FX	1.00000000
EKK0064I	1348	x221000n	FX	1.00000000
EKK0064I	1397	x610000n	FX	1.00000000

*** An optimal integer solution has been found ***

*** Application terminated ***

Appendix F

OsI Output For "Number Of Students Weighting" Scheduling Variation

Run # 4 - Department Weights based upon number of Students being taught

EKK0008I Description of Problem SchedMps

EKK0016I Matrix has 953 rows, 1398 columns and 13830 entries

EKK0009I Problem Status

EKK3000W Iteration Number: 37223; Objective Value: 84868.00--Infeasible

EKK0003I The sum of the primal infeasibilities is 4.337215D-07, and the number of primal infeasibilities is 1

1EKK0011I Columns Section

Page 11

EKK0063I	..Name..	StatActivity.....
EKK0064I	1 x1011905	BS	1.00000000
EKK0064I	22 x1022015	FX	1.00000000
EKK0064I	40 x1032042	FX	1.00000000
EKK0064I	67 x1041892	BS	1.00000000
EKK0064I	74 x1052172	FX	1.00000000
EKK0064I	94 x1061343	BS	1.00000000
EKK0064I	110 x1070629	FX	1.00000000
EKK0064I	115 x1081995	FX	1.00000000
EKK0064I	133 x1091762	BS	1.00000000
EKK0064I	152 x1100609	FX	1.00000000
EKK0064I	157 x1111273	FX	1.00000000
EKK0064I	176 x1120569	BS	1.00000000
EKK0064I	184 x2010902	FX	1.00000000
EKK0064I	202 x2021204	FX	1.00000000
EKK0064I	220 x2031242	BS	1.00000000
EKK0064I	235 x2042456	BS	1.00000000
EKK0064I	256 x2050923	BS	1.00000000
EKK0064I	280 x2061223	FX	1.00000000
EKK0064I	298 x2070923	FX	1.00000000
EKK0064I	316 x2081223	FX	1.00000000

EKK0064I	325	x2091005	FX	1.00000000
EKK0064I	352	x2100935	FX	1.00000000
EKK0064I	379	x2120307	BS	1.00000000
EKK0064I	384	x2130884	BS	1.00000000
EKK0064I	409	x2140297	FX	1.00000000
EKK0064I	417	x2150873	BS	1.00000000
EKK0064I	432	x2160756	BS	1.00000000
EKK0064I	447	x2170895	BS	1.00000000
EKK0064I	465	x2182066	FX	1.00000000
EKK0064I	475	x2191993	BS	1.00000000
EKK0064I	492	x2202044	FX	1.00000000
EKK0064I	510	x2221213	FX	1.00000000
EKK0064I	534	x2231223	BS	1.00000000
EKK0064I	546	x2241243	BS	1.00000000
EKK0064I	561	x2252456	FX	1.00000000
EKK0064I	567	x2260308	BS	1.00000000
EKK0064I	569	x2270326	BS	1.00000000
EKK0064I	590	x2280903	BS	1.00000000
EKK0064I	605	x2291195	BS	1.00000000
EKK0064I	632	x3012101	BS	1.00000000
EKK0064I	650	x3022045	FX	1.00000000
EKK0064I	666	x3032095	BS	1.00000000
EKK0064I	677	x3042315	BS	1.00000000
EKK0064I	698	x3050523	FX	1.00000000
EKK0064I	710	x3062369	BS	1.00000000
EKK0064I	723	x3071932	FX	1.00000000
EKK0064I	734	x3080267	FX	1.00000000
EKK0064I	739	x3090885	BS	1.00000000
EKK0064I	754	x3100955	FX	1.00000000
EKK0064I	772	x3111992	BS	1.00000000
EKK0064I	796	x3122283	FX	1.00000000
EKK0064I	822	x3132034	FX	1.00000000
EKK0064I	829	x3141322	FX	1.00000000

1EKK0011I

Columns Section

Page 12

EKK0063I	..Name..	StatActivity.....
EKK0064I	847	x3152452	FX 1.00000000
EKK0064I	861	x3161911	FX 1.00000000
EKK0064I	882	x3170068	FX 1.00000000
EKK0064I	883	x4010757	FX 1.00000000
EKK0064I	887	x4020974	FX 1.00000000
EKK0064I	908	x4030884	FX 1.00000000
EKK0064I	926	x4040881	FX 1.00000000
EKK0064I	944	x4050305	FX 1.00000000
EKK0064I	962	x4062275	FX 1.00000000
EKK0064I	977	x4070924	FX 1.00000000
EKK0064I	995	x4080924	FX 1.00000000

EKK0064I	1010	x4090944	FX	1.00000000
EKK0064I	1038	x5010902	FX	1.00000000
EKK0064I	1046	x5020202	FX	1.00000000
EKK0064I	1073	x5031003	FX	1.00000000
EKK0064I	1082	x5040953	FX	1.00000000
EKK0064I	1103	x5051263	FX	1.00000000
EKK0064I	1121	x6011323	FX	1.00000000
EKK0064I	1142	x6020965	FX	0.99999993
EKK0064I	1143	x6020964	FX	0.655040660602D-07
EKK0064I	1154	x6030865	FX	1.00000000
EKK0064I	1172	x6040945	FX	1.00000000
EKK0064I	1191	x6050863	FX	1.00000000
EKK0064I	1217	x6060883	FX	1.00000000
EKK0064I	1235	x6072013	FX	1.00000000
EKK0064I	1250	x6082033	FX	1.00000000
EKK0064I	1265	x6091003	FX	1.00000000
EKK0064I	1307	x6111933	FX	1.00000000
EKK0064I	1338	x211000n	FX	1.00000000
EKK0064I	1348	x221000n	FX	1.00000000
EKK0064I	1397	x610000n	FX	1.00000000

*** An optimal integer solution has been found ***

*** Application terminated ***

Appendix G

OsI Output For "Number Of Course With Lectures Given Weighting" Scheduling Variation

Run # 3 - Department Weights based upon Number of Courses being taught with each

department's seminars weighted highly to insure scheduling at first preference

EKK0008I Description of Problem SchedMps
EKK0016I Matrix has 953 rows, 1398 columns and 13830 entries

EKK0009I Problem Status

EKK0001I Iteration Number: 39012; Objective Value: 155038.0--Optimal

1EKK0011I Columns Section
Page 12

EKK0063I	..Name..	StatActivity.....
EKK0064I	3 x1011903	BS	1.00000000
EKK0064I	25 x1022055	FX	1.00000000
EKK0064I	37 x1032032	FX	1.00000000
EKK0064I	55 x1041902	FX	1.00000000
EKK0064I	73 x1052175	FX	1.00000000
EKK0064I	91 x1061333	BS	1.00000000
EKK0064I	109 x1070549	FX	1.00000000
EKK0064I	115 x1081995	BS	1.00000000
EKK0064I	133 x1091762	FX	1.00000000
EKK0064I	152 x1100609	BS	1.00000000
EKK0064I	157 x1111273	FX	1.00000000
EKK0064I	176 x1120569	FX	1.00000000
EKK0064I	184 x2010902	FX	1.00000000
EKK0064I	202 x2021204	FX	1.00000000
EKK0064I	220 x2031242	BS	1.00000000
EKK0064I	235 x2042456	BS	1.00000000
EKK0064I	256 x2050923	FX	1.00000000
EKK0064I	280 x2061223	BS	1.00000000
EKK0064I	299 x2070924	FX	1.00000000
EKK0064I	316 x2081223	BS	1.00000000

EKK0064I	348	x2101243	BS	1.00000000
EKK0064I	379	x2120307	BS	1.00000000
EKK0064I	384	x2130884	BS	1.00000000
EKK0064I	415	x2140317	FX	1.00000000
EKK0064I	420	x2150883	FX	1.00000000
EKK0064I	433	x2160766	FX	1.00000000
EKK0064I	451	x2170903	FX	1.00000000
EKK0064I	465	x2182066	FX	1.00000000
EKK0064I	474	x2191995	FX	1.00000000
EKK0064I	492	x2202044	FX	1.00000000
EKK0064I	510	x2221213	BS	1.00000000
EKK0064I	534	x2231223	FX	1.00000000
EKK0064I	546	x2241243	BS	1.00000000
EKK0064I	561	x2252456	BS	1.00000000
EKK0064I	567	x2260308	BS	1.00000000
EKK0064I	569	x2270326	BS	1.00000000
EKK0064I	590	x2280903	BS	1.00000000
EKK0064I	605	x2291195	FX	1.00000000
EKK0064I	629	x3012091	FX	1.00000000
EKK0064I	650	x3022045	FX	1.00000000
EKK0064I	668	x3032101	FX	1.00000000
EKK0064I	678	x3042311	FX	1.00000000
EKK0064I	695	x3050513	BS	1.00000000
EKK0064I	711	x3062379	FX	1.00000000
EKK0064I	723	x3071932	BS	1.00000000
EKK0064I	732	x3080277	FX	1.00000000
EKK0064I	739	x3090885	BS	1.00000000
EKK0064I	754	x3100955	FX	1.00000000
EKK0064I	772	x3111992	BS	1.00000000
EKK0064I	796	x3122283	FX	1.00000000
EKK0064I	812	x3132003	FX	1.00000000
EKK0064I	829	x3141322	FX	1.00000000
EKK0064I	847	x3152452	FX	1.00000000

1EKK0011I

Columns Section

Page 13

EKK0063I	..Name..	StatActivity.....
EKK0064I	861 x3161911	FX	1.00000000
EKK0064I	881 x3170067	FX	1.00000000
EKK0064I	883 x4010757	FX	1.00000000
EKK0064I	887 x4020974	FX	1.00000000
EKK0064I	908 x4030884	FX	1.00000000
EKK0064I	926 x4040881	FX	1.00000000
EKK0064I	941 x4050295	FX	1.00000000
EKK0064I	962 x4062275	FX	1.00000000
EKK0064I	977 x4070924	FX	1.00000000
EKK0064I	992 x4080914	FX	1.00000000
EKK0064I	1010 x4090944	FX	1.00000000

EKK0064I	1037	x5010901	FX	1.00000000
EKK0064I	1046	x5020202	FX	1.00000000
EKK0064I	1073	x5031003	FX	1.00000000
EKK0064I	1082	x5040953	FX	1.00000000
EKK0064I	1103	x5051263	FX	1.00000000
EKK0064I	1124	x6011273	FX	1.00000000
EKK0064I	1145	x6020975	FX	1.00000000
EKK0064I	1154	x6030865	FX	1.00000000
EKK0064I	1174	x6040942	FX	1.00000000
EKK0064I	1199	x6050895	FX	1.00000000
EKK0064I	1211	x6062003	FX	1.00000000
EKK0064I	1232	x6072003	FX	1.00000000
EKK0064I	1262	x6090993	FX	1.00000000
EKK0064I	1283	x6102396	FX	1.00000000
EKK0064I	1310	x6111943	FX	1.00000000
EKK0064I	1336	x209000n	FX	1.00000000
EKK0064I	1338	x211000n	FX	1.00000000
EKK0064I	1348	x221000n	FX	1.00000000
EKK0064I	1395	x608000n	FX	1.00000000

*** An optimal integer solution has been found ***

*** Application terminated ***

Appendix H

EDSSS User Manual

Preface

This user manual is written in support of the Educational Decision Support and Scheduling System (EDSSS), developed 1Lt Shane Knighton, as part of the thesis research entitled “A Value Focused Approach to Academic Course Scheduling.” This manual assumes the user has a working knowledge of MicroSoft Excel 97 and DOS. The programs use code written in Visual Basic within MS Excel. The user operating EDSSS is assumed to be the academic course scheduler and is herein referred to as the scheduler. Notes and Cautions are provided in *italics* throughout the manual. A Note is used to provide the user with information that will help EDSSS run smoothly, a Caution provides information that may cause the program to execute incorrectly.

Introduction

The Educational Decision Support and Scheduling System (EDSSS) assigns academic courses for the School of Engineering (EN) of AFIT to days, times, and rooms. The system will not allow student or instructor conflicts and will not utilize more rooms than are available within the EN building. If more in-depth information is required about the methodology used by EDSSS, the user is referred to the thesis by 1Lt Shane Knighton entitled “A Value Focused Thinking Approach to Academic Course Scheduling.”

EDSSS is comprised of three different programs:

- 1) Electronic Questionnaire
- 2) Mixed Integer Program Problem Generator
- 3) Optimization Subroutine Library

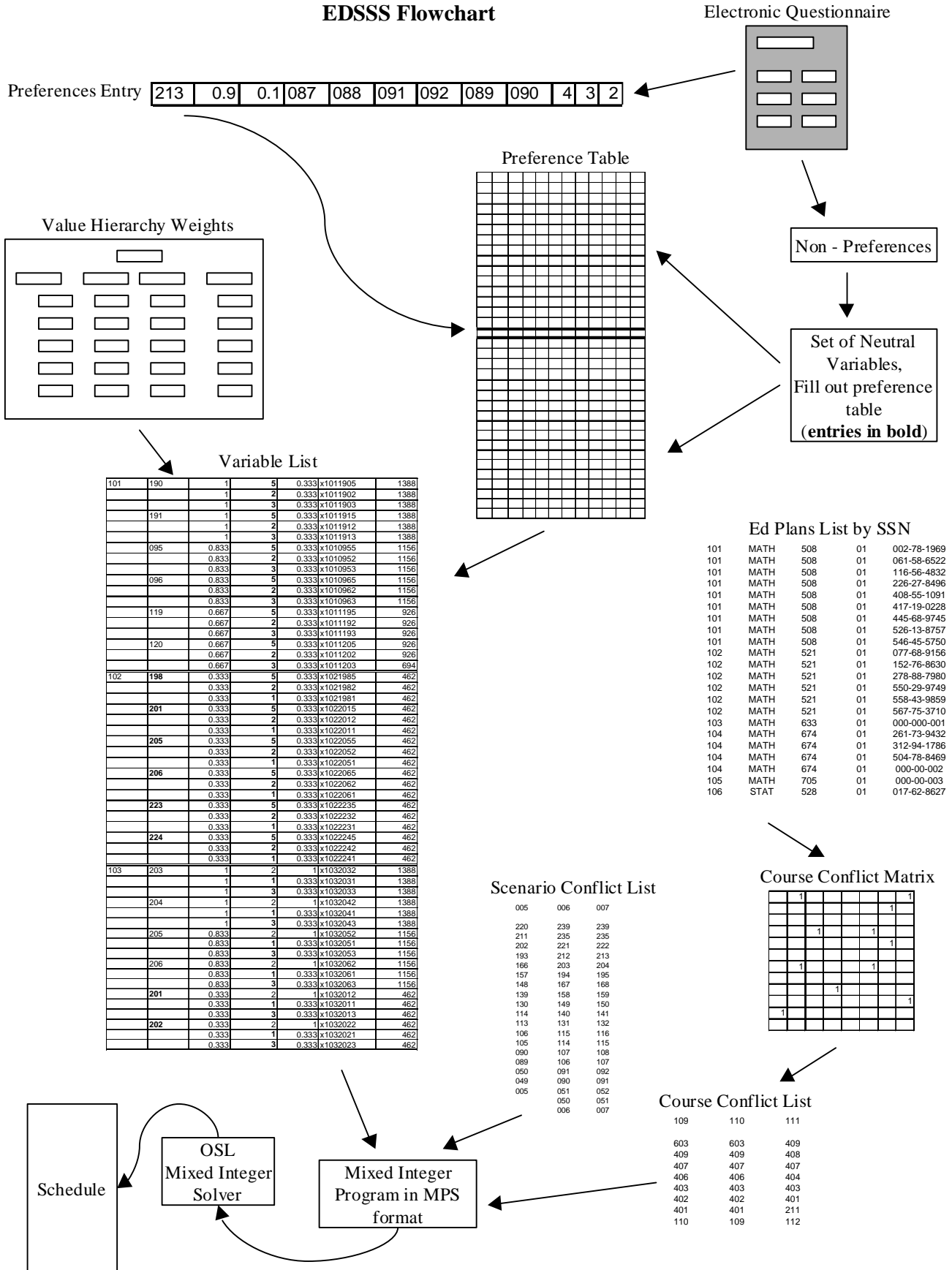
The flowchart on the following page gives the user an overview of how each of these programs interact. A more detailed description of each program is provided.

Prior to using EDSSS to produce an academic schedule, a finalized course listing from each department is required. The course listing must contain the name of the instructor for each course listed. The scheduler must then assign a three-digit course ID number to each of the courses.

NOTE: It is suggested that the ID numbers be assigned in the following manner. The first digit of a course offered by ENC is 1; the final two digits are assigned as the order listed on the proposed course listing. In a similar fashion, the first digit of courses offered by ENG, ENP, ENS, ENV, and ENY will be 2, 3, 4, 5, and 6 respectively.

Additionally, a query from the Education Plans database is needed prior to scheduling. The query must list the department, course number, section/lab number, and the SSN of all students enrolled in that course. The course ID number is added to the first column of the list. The ID number must be repeated for every SSN in the same course. The query must be in the form shown by Figure 1 of this manual.

EDSSS Flowchart



Caution: The list must be sorted by ID number. All identical ID numbers must be grouped together in the list. The program assumes that if a new ID number is encountered, all SSN for the previous ID number have been counted.

Caution: The Ed Plan List must contain information for every course given an ID. If the list is not complete, the scheduler must include the missing courses in the list prior to scheduling. The scheduler must enter the missing courses in the same format as the rest of the list, however no SSN should be given.

101	MATH	508	01	002-78-1969
101	MATH	508	01	061-58-6522
101	MATH	508	01	116-56-4832
101	MATH	508	01	226-27-8496
101	MATH	508	01	408-55-1091
101	MATH	508	01	417-19-0228
101	MATH	508	01	445-68-9745
101	MATH	508	01	526-13-8757
101	MATH	508	01	546-45-5750
102	MATH	521	01	077-68-9156
102	MATH	521	01	152-76-8630
102	MATH	521	01	278-88-7980
102	MATH	521	01	550-29-9749
102	MATH	521	01	558-43-9859
102	MATH	521	01	567-75-3710
103	MATH	633	01	000-000-001
104	MATH	674	01	261-73-9432
104	MATH	674	01	312-94-1786
104	MATH	674	01	504-78-8469
104	MATH	674	01	000-00-002
105	MATH	705	01	000-00-003
106	STAT	528	01	017-62-8627
106	STAT	528	01	023-52-7817
106	STAT	528	01	263-63-8302
106	STAT	528	01	399-68-3166
106	STAT	528	01	414-49-4391
106	STAT	528	01	459-79-1577
106	STAT	528	01	460-33-1803
106	STAT	528	01	480-60-4053
107	STAT	528	91	017-62-8627
107	STAT	528	91	023-52-7817
107	STAT	528	91	263-63-8302
107	STAT	528	91	399-68-3166
107	STAT	528	91	414-49-4391
107	STAT	528	91	459-79-1577
107	STAT	528	91	460-33-1803
107	STAT	528	91	480-60-4053

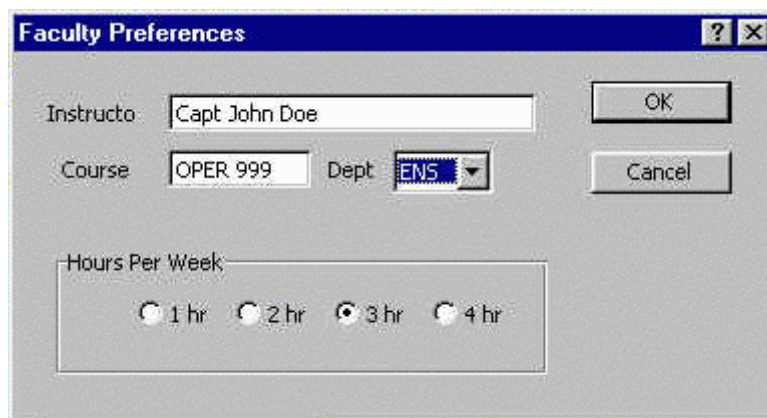
Figure 1: Example of Ed Plan Query

Electronic Questionnaire

The electronic questionnaire is a set of Windows dialogue boxes which run in MS Excel. The purpose of the questionnaire is to capture the day/time preferences, day/time non-preferences, and room preferences of the instructor for each course to be scheduled. This questionnaire can be delivered to each instructor via E-mail or place in a central location accessible to everyone being scheduled.

Note: Instructors teaching more than one course must fill out a different questionnaire for each course to be scheduled.

The initial screen offers the user two options. Single clicking on the INSTRUCTIONS option button provides instructions on filling out the questionnaire. Single clicking on the FACULTY PREFERENCES option button displays the following dialogue box.



The image shows a Windows-style dialog box titled "Faculty Preferences". It has a blue title bar with a question mark icon and a close button. The dialog contains the following fields and controls:

- An "Instructor" text box containing "Capt John Doe".
- A "Course" text box containing "OPER 999".
- A "Dept" dropdown menu currently showing "ENS".
- Two buttons on the right: "OK" and "Cancel".
- A section titled "Hours Per Week" containing four radio buttons: "1 hr", "2 hr", "3 hr", and "4 hr". The "3 hr" radio button is selected.

Figure 2: Faculty Preferences Dialogue Box # 1

The instructors must fill in their name, course, department, and course ID. The ID number should be assigned to each instructor prior to delivering the questionnaire. Additionally, the instructor must indicate the number of hours their course meets per week.

Caution: The number of hours the course meets per week must be indicated correctly.

The choices for day combinations differ according to the number of hours indicated.

Once the information has been entered, single click the OK button, this will automatically display the dialogue box containing the available day/time scenarios. The instructor can fill out the preferences and non-preferences by selecting an entry from the appropriate dropdown list. The day/time weight must be placed in the appropriate box and be within the range of 0 to 1. An example of the preferences dialogue box is shown in Figure 3 of this manual.

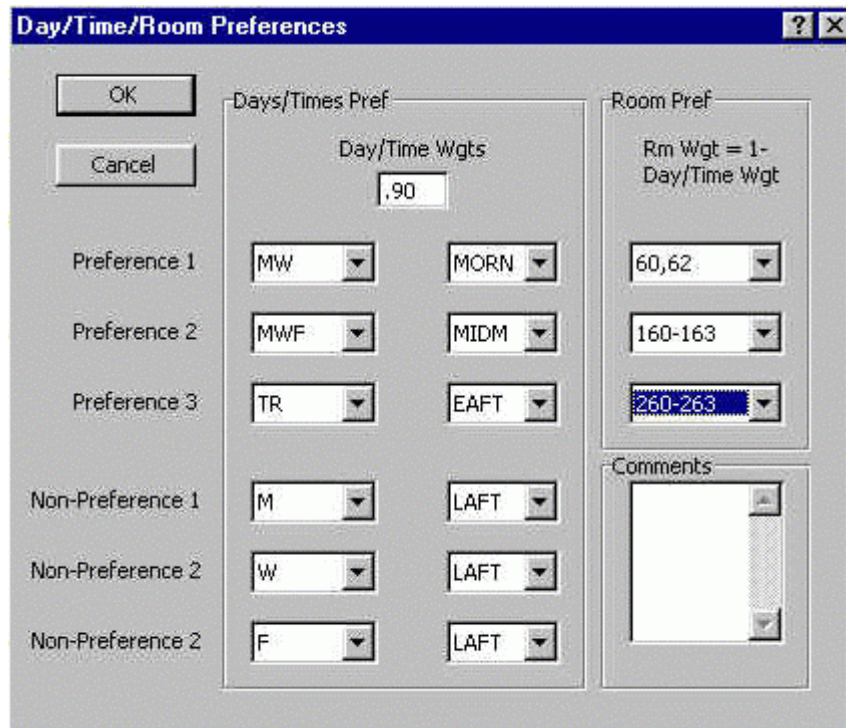


Figure 3: Faculty Preferences Dialogue Box #2

Note: If no day/time weight is indicated the weighting is selected by the scheduler.

Once the instructor completes the questionnaire, the preferences are put into Range B1:B12 on the PREFERENCES sheet of the electronic questionnaire. This Range is the entry for the course in the Preference Table of the Mixed Integer Problem Generator. The instructor's non-preferences for day/time scenarios are shown in Range E1:E6.

Mixed Integer Problem Generator

The Mixed Integer Problem Generator is an MS Excel spreadsheet using a suite of Visual Basic Modules. The purpose of the problem generator is to construct the Mixed Integer Academic Scheduling Problem in Mathematical Programming System (MPS) format. This file is read by OSL, the Mixed Integer Solver. Open the problem generator in MS Excel 97.

The scheduler is required to update four Ranges before running the problem generator. Initially, the scheduler should enter the weights for each department and the courses to be scheduled on the VALUE HIERARCHY sheet.

Note: The weights for each Department should come from the Dean or his staff, while the weights for each course are given by the respective Department Heads.

Caution: An entry in the Value Hierarchy, i.e. course ID and weight, is required for every course in the Preference Table.

The three remaining Ranges to be updated are located on the CODE DATA sheet. The Ed Plan query, in the format shown by Figure 1 of this manual, should be placed in Range A12:D12. The Preference Table is built by combining the entries from all the instructors' individual preference entries. These entries were obtained via the Electronic Questionnaire, refer to that portion of this manual for further information. The entries are placed on consecutive rows, with the first entry being placed in Range I12:T12.

If the instructor did not completely fill out the questionnaire, the scheduler using neutral preferences can complete the entry. Neutral preferences are defined as the day/time scenarios not given as non-preferences by the instructor via the electronic questionnaire. Neutral preferences for day/time scenarios and room groups must be indicated as such by using **bold font** for the neutral scenario and room group numbers in the preferences entry for that course.

The final range is located in cells, C2:C7. The number of courses to be scheduled is entered into cell C2. Cells C3:C5 are used by the program and should not be changed. The path and filename of the file created that contains the Mixed Integer Program in MPS is entered in Cells C6:C7. Once all of the above tasks have been completed, single clicking the WRITE MPS FILE button on the CODE DATA sheet creates the MPS file named in cell C7. The following figure shows an updated CODE DATA sheet.

NumCourses	83
NumScenarios	245
Decon Penalty	100
NumVariables	1494
Path	c:\thesis\Final Model\
Filename	run1.mps

Educational Decision Support & Scheduling System
 AFIT School of Engineering
 Developed In Support of Thesis Research Conducted by: 1Lt Shane Knighton /GOF
 Advisors: LtC Jack Jackson
 Dr Dick Deckro

Education Plan Query

101	MATH	508	01	002-78-1969
101	MATH	508	01	061-58-6522
101	MATH	508	01	116-56-4832
101	MATH	508	01	226-27-8496
101	MATH	508	01	408-55-1091
101	MATH	508	01	417-19-0228
101	MATH	508	01	445-68-9745
101	MATH	508	01	526-13-8757
101	MATH	508	01	546-45-5750
102	MATH	521	01	077-68-9156
102	MATH	521	01	152-76-8630
102	MATH	521	01	278-88-7980
102	MATH	521	01	550-29-9749
102	MATH	521	01	558-43-9859
102	MATH	521	01	567-75-3710
103	MATH	633	01	000-000-001
104	MATH	674	01	261-73-9432
104	MATH	674	01	312-94-1786
104	MATH	674	01	504-78-8469
104	MATH	674	01	000-00-002
105	MATH	705	01	000-00-003
106	STAT	528	01	017-62-8627
106	STAT	528	01	023-52-7817

Value Table

Course ID	Day/Time Wgt	Room Wgt	Scen 1	Scen 1	Scen 2	Scen 2
101	1	0	190	191	095	096
102	0.5	0.5	198	201	205	206
103	1	0	203	204	205	206
104	0.8	0.2	190	191	199	200
105	1	0	217	218	203	204
106	0.5	0.5	133	134	160	161
107	0.5	0.5	054	062	070	055
108	0.75	0.25	199	200	217	218
109	0.75	0.25	176	177	133	134
110	1	0	059	060	061	055
111	1	0	127	128	131	132
112	0.9	0.1	055	056	059	060
201	0.8	0.2	089	090	123	124
202	0.9	0.1	119	120	087	088
203	0.8	0.2	123	124	091	092
204	0.5	0.5	245	244	243	241
205	0.9	0.1	091	092	093	105
206	0.7	0.3	089	090	121	122
207	1	0	099	100	091	092
208	0.9	0.1	119	120	121	122
209	1	0	100	098	101	099
210	1	0	123	124	125	093
211	0.9	0.1	087	088	089	090

Figure 4: Updated CODE DATA Sheet

Optimization Subroutine Library (OSL), Mixed Integer Solver

OSL is a powerful mixed integer solver from IBM. It is run on a dedicated WindowsNT workstation in the Center for Modeling, Simulations and Analysis, room 133B in building 640. The solver runs in DOS. The command line to run the solver for the purpose of creating an academic schedule is as follows:

```
oslmslv -maxmin=max -dspace=10000000 -imaxiter=9999999 -maxsols=9999999
<inputfile> outputfile
```

The input filename is the path and filename placed in Cell C6:C7 on the CODE DATA sheet of the problem generator. The user is referred to that section of the manual for

more information. The output filename is user defined and will contain the solution to the Mixed Integer Program. The user is referred to the OSL user manual for further information about OSL.

The solution to the Mixed Integer Program is at the end of the output file. The solution provides the variable names that describe the course scheduled, as well as the day/time scenario and room group to which the course was assigned. The first three digits after the letter 'x' are the course ID. The next three digits give the day/time scenario, and the last digit the room group. Refer to Tables 1 and 2 for definitions of the various room groups and day/time scenarios. The scheduler simply translates the variables into an academic course schedule. The scheduler assigns specific rooms within a particular room group.

If a variable is returned of the form, x122000n, then the course was not scheduled. The scheduler has the choice of scheduling the course manually or rerunning the process. To rerun the process, add or change neutral preferences in the preference entry of the Preference Table for the particular course. The Preference Table is located on the CODE DATA sheet of the problem generator.

Caution: All neutral preferences, for either day/time or rooms, must be in bold font.

Note: Neutral preferences are determined by eliminating the non-preferred day/time scenarios given by the instructor via the electronic questionnaire.

Table 1: Room Groups€

Room Group	Classroom Numbers	Capacity
1	60,62	35
2	160-163	30
3	260-263	28
4	172, 176B	35&24
5	64A,164A,176A	10
6	Labs 241,265,121	25
7	Lecture Hall 121	54
8	Lecture Hall 230	54
9	Computer Lab 165	16

Table 2: Day/Time Scenarios€

	Days of the Week	Start Times (on the hour)	Scenario ID #
1 Hour Class	M	0800 -1600	001 - 009
	T	0800 -1600	010 - 018
	W	0800 -1600	019 - 027
	R	0800 -1600	028 - 036
	F	0800 -1600	037 - 045
2 Hour Class	M	0800 -1500	046 - 053
	T	0800 -1500	054 - 061
	W	0800 -1500	062 - 069
	R	0800 -1500	070 - 077
	F	0800 -1500	078 - 085
3 or 4 Hour Class	MW	0800 -1500	086 - 093
	TR	0800 -1500	094 - 101
	MR	0800 -1500	102 - 109
	MF	0800 -1500	110 -117
	TF	0800 -1500	118 - 125
3 Hour Class	MWF	0800 -1600	126 - 134
	MTR	0800 -1600	135 - 143
	MTF	0800 -1600	144 - 152
	MWR	0800 -1600	153 - 161
	MRF	0800 -1600	162 - 170
	TWF	0800 -1600	171 - 179
	TRF	0800 -1600	180 - 188
4 Hour Class	MTWR	0800 -1600	189 - 197
	MTWF	0800 -1600	198 - 206
	MTRF	0800 -1600	207 - 215
	MWRF	0800 -1600	216 - 224
	TWRF	0800 -1600	225 - 233
6 Hour Lab	MW	0900	234
	MW	1300	235
	TR	0900	236
	TR	1300	237
3 Hour Lab	M	0900	238
	M	1300	239
	T	0900	240
	T	1300	241
	W	0900	242
	W	1300	243
	R	0900	244
	R	1300	245

Appendix I€

Preference Table For Spring Quarter 98 Schedule€

101	1	0	190	191	095	096	119	120	5	2	3
102	0.5	0.5	198	201	205	206	223	224	5	2	1
103	1	0	203	204	205	206	201	202	2	1	3
104	0.8	0.2	190	191	199	200	189	198	2	3	4
105	1	0	217	218	203	204	095	096	5	2	3
106	0.5	0.5	133	134	160	161	178	179	3	1	2
107	0.5	0.5	054	062	070	055	063	071	9		
108	0.75	0.25	199	200	217	218	201	219	5	4	2
109	0.75	0.25	176	177	133	134	178	179	2	3	5
110	1	0	059	060	061	055	056	057	9		
111	1	0	127	128	131	132	133	134	3	4	2
112	0.9	0.1	055	056	059	060	061	054	9		
201	0.8	0.2	089	090	123	124	121	122	2	1	3
202	0.9	0.1	119	120	087	088	121	122	4	1	7
203	0.8	0.2	123	124	091	092	121	122	2	3	1
204	0.5	0.5	245	244	243	241	239	242	6	7	8
205	0.9	0.1	091	092	093	105	106	090	3	4	2
206	0.7	0.3	089	090	121	122	091	123	3	1	4

207	1	0	099	100	091	092	101	093		3	4	2
208	0.9	0.1	119	120	121	122	123	124		3	2	1
209	1	0	100	098	101	099	092	093		5	4	2
210	1	0	123	124	125	093	108	109		5	1	3
211	0.9	0.1	087	088	089	090	091	092		3	5	4
212	0.5	0.5	030							7	8	
213	0.9	0.1	087	088	091	092	089	090		4	3	2
214	0.5	0.5	011	012	013	029	030	031		4	7	8
215	1	0	087	088	091	092	093			3	2	1
216	0.5	0.5	075	076	073	074	071	072		6		
217	1	0	093	091	092	089	090	088		5	3	2
218	0.75	0.25	203	204	205	206	201	202		6	4	1
219	1	0	199	200	198	203	204			5	3	2
220	0.99	0.01	203	204	199	200	198			4	3	2
221	1	0	095							5	1	4
222	0.75	0.25	120	121	087	088	089	090		3	2	5
223	0.9	0.1	099	100	121	122	097	098		3	5	1
224	1	0	123	124	121	122	091	092		3	5	2
225	0.5	0.5	245	244	243	241	239	242		6		
226	0.5	0.5	030							8	7	
227	0.5	0.5	032	031	033	030	034	029		6	4	1
228	0.75	0.25	089	090	119	120	121	122		3	2	1
229	1	0	119	120	123	124	087	088		5	1	2
301	0.5	0.5	207	208	209	210	211	212		1	5	4
302	0.8	0.2	199	200	203	204	205	206		5	3	2
303	0.5	0.5	207	208	209	210	211	212		1	5	4
304	1	0	231	230	229	228	227	226		5	1	2
305	1	0	051	052	048	047	046			3	1	2
306	1	0	236	237	234	235				9		

307	0.5	0.5	190	191	192	193	194	195		2	3	1
308	0.5	0.5	027	026						7	8	
309	1	0	087	088	089	090	091	092		5	1	4
310	1	0	095	096	097	098	099	100		5	1	4
311	0.5	0.5	199	200	208	209	217	218		2	1	5
312	0.5	0.5	226	227	228	229	230	231		3	1	2
313	1	0	199	200	201	202	203	204		2	3	4
314	0.5	0.5	131	132	130	129	128	127		2	1	3
315	0.5	0.5	241	245	242	244				2	1	3
316	1	0	190	191	194	195	189			2	3	1
317	0.5	0.5	001	002	003	004	005	006		7	8	
401	0.5	0.5	075	076						7	8	
402	0.9	0.1	097	098	099	100	095	096		4	3	2
403	0.9	0.1	087	088	099	100	091	092		4	3	2
404	0.9	0.1	087	088	099	100	091	092		1	2	4
405	0.5	0.5	029	030	038	039	002	003		5	7	8
406	0.9	0.1	226	227	228	229	225			5	4	2
407	0.8	0.2	091	092	099	100	087	088		4	2	3
408	0.7	0.3	091	092	099	100	087	088		4	2	3
409	0.8	0.2	094	086	126	095	087	096		4	3	2
501	1	0	087	088	089	090	091	092		1	2	5
502	0.8	0.2	020	021	011	012	029	030		2	3	1
503	0.5	0.5	095	096	099	100	087	088		3	2	1
504	1	0	095	096	097	098	099	100		3	2	1
505	0.5	0.5	086	126	087	088	127	128		3	2	1
601	0.85	0.15	131	132	127	128	099	100		3	2	1
602	0.5	0.5	094	095	096	097	098	099		5	4	3
603	0.5	0.5	086	087	088	089	090	091		5	3	1
604	0.5	0.5	094	095	096	097	098	099		5	4	2

605	0.5	0.5	086	087	088	089	090	091	5	3	1
606	0.9	0.1	199	200	087	088	201	089	3	2	1
607	0.5	0.5	198	199	200	201	202	203	3	2	4
608	0.35	0.65	199	200	203	204	190	191	3	2	4
609	0.5	0.5	099	100	119	120	230	231	3	2	4
610	1	0	238	239	241	240	234	242	6	7	8
611	0.5	0.5	190	191	192	193	194	195	3	2	1

Appendix J

ED Plans Query For Spring Quarter 98 Schedule

101	MATH	508	01	002-78- 1969
101	MATH	508	01	061-58- 6522
101	MATH	508	01	116-56- 4832
101	MATH	508	01	226-27- 8496
101	MATH	508	01	408-55- 1091
101	MATH	508	01	417-19- 0228
101	MATH	508	01	445-68- 9745
101	MATH	508	01	526-13- 8757
101	MATH	508	01	546-45- 5750
102	MATH	521	01	077-68- 9156
102	MATH	521	01	152-76- 8630
102	MATH	521	01	278-88- 7980
102	MATH	521	01	550-29- 9749
102	MATH	521	01	558-43- 9859
102	MATH	521	01	567-75- 3710
103	MATH	633	01	000-000- 001
104	MATH	674	01	261-73- 9432

104	MATH	674	01	312-94-1786
104	MATH	674	01	504-78-8469
104	MATH	674	01	000-00-002
105	MATH	705	01	000-00-003
106	STAT	528	01	017-62-8627
106	STAT	528	01	023-52-7817
106	STAT	528	01	263-63-8302
106	STAT	528	01	399-68-3166
106	STAT	528	01	414-49-4391
106	STAT	528	01	459-79-1577
106	STAT	528	01	460-33-1803
106	STAT	528	01	480-60-4053
107	STAT	528	91	017-62-8627
107	STAT	528	91	023-52-7817
107	STAT	528	91	263-63-8302
107	STAT	528	91	399-68-3166
107	STAT	528	91	414-49-4391
107	STAT	528	91	459-79-1577
107	STAT	528	91	460-33-1803
107	STAT	528	91	480-60-4053
108	STAT	583	01	269-70-2117
108	STAT	583	01	453-13-1389
108	STAT	583	01	529-43-6216

108	STAT	583	01	555-85-8988
109	STAT	696	01	135-66-3641
109	STAT	696	01	145-76-4239
109	STAT	696	01	155-62-9418
109	STAT	696	01	167-52-5679
109	STAT	696	01	197-48-0279
109	STAT	696	01	230-25-4803
109	STAT	696	01	288-58-2383
109	STAT	696	01	298-72-3524
109	STAT	696	01	307-90-7774
109	STAT	696	01	323-80-4274
109	STAT	696	01	334-60-9745
109	STAT	696	01	407-06-8356
109	STAT	696	01	410-43-5582
109	STAT	696	01	426-06-7661
109	STAT	696	01	441-76-2966
109	STAT	696	01	452-37-8068
109	STAT	696	01	452-93-3772
110	STAT	696	91	135-66-3641
110	STAT	696	91	145-76-4239
110	STAT	696	91	155-62-9418
110	STAT	696	91	167-52-5679
110	STAT	696	91	197-48-0279

110	STAT	696	91	230-25-4803
110	STAT	696	91	288-58-2383
110	STAT	696	91	298-72-3524
110	STAT	696	91	307-90-7774
110	STAT	696	91	323-80-4274
110	STAT	696	91	334-60-9745
110	STAT	696	91	407-06-8356
110	STAT	696	91	410-43-5582
110	STAT	696	91	426-06-7661
110	STAT	696	91	441-76-2966
110	STAT	696	91	452-37-8068
110	STAT	696	91	452-93-3772
111	STAT	696	02	493-64-0852
111	STAT	696	02	507-88-4212
111	STAT	696	02	508-76-1824
111	STAT	696	02	512-78-6647
111	STAT	696	02	521-33-4756
111	STAT	696	02	528-43-6241
111	STAT	696	02	537-92-9102
111	STAT	696	02	540-08-9450
111	STAT	696	02	541-13-1388
111	STAT	696	02	553-91-1466
111	STAT	696	02	594-28-2049

111	STAT	696	02	594-54-0505
111	STAT	696	02	999-00-0304
111	STAT	696	02	999-00-0305
111	STAT	696	02	999-00-0314
111	STAT	696	02	999-00-0315
112	STAT	696	92	468-84-9447
112	STAT	696	92	493-64-0852
112	STAT	696	92	507-88-4212
112	STAT	696	92	508-76-1824
112	STAT	696	92	512-78-6647
112	STAT	696	92	521-33-4756
112	STAT	696	92	528-43-6241
112	STAT	696	92	537-92-9102
112	STAT	696	92	540-08-9450
112	STAT	696	92	541-13-1388
112	STAT	696	92	553-91-1466
112	STAT	696	92	594-28-2049
112	STAT	696	92	594-54-0505
112	STAT	696	92	999-00-0304
112	STAT	696	92	999-00-0305
112	STAT	696	92	999-00-0314
112	STAT	696	92	999-00-0315
112	STAT	696	92	468-84-9447

201	CSCE	532	01	413-02-6062
201	CSCE	532	01	543-17-5520
201	CSCE	532	01	999-00-0280
201	CSCE	532	01	999-00-0311
201	CSCE	532	01	999-00-0312
202	CSCE	544	01	002-78-1969
202	CSCE	544	01	005-74-7174
202	CSCE	544	01	093-54-0888
202	CSCE	544	01	183-64-2498
202	CSCE	544	01	211-58-1799
202	CSCE	544	01	252-27-3119
202	CSCE	544	01	269-70-2117
202	CSCE	544	01	296-60-5633
202	CSCE	544	01	310-76-0949
202	CSCE	544	01	311-82-3180
202	CSCE	544	01	334-72-1062
202	CSCE	544	01	381-74-5351
202	CSCE	544	01	392-78-2316
202	CSCE	544	01	413-02-6062
202	CSCE	544	01	414-17-2236
202	CSCE	544	01	467-17-0758
202	CSCE	544	01	473-86-0371
202	CSCE	544	01	480-86-8957

202	CSCE	544	01	516-13-9290
202	CSCE	544	01	520-17-9499
202	CSCE	544	01	527-96-9291
202	CSCE	544	01	528-43-9574
202	CSCE	544	01	539-64-0152
202	CSCE	544	01	555-85-8988
202	CSCE	544	01	559-53-3283
202	CSCE	544	01	574-60-5692
202	CSCE	544	01	598-09-4953
202	CSCE	544	01	600-48-5415
202	CSCE	544	01	999-00-0301
202	CSCE	544	01	999-00-0309
202	CSCE	544	01	999-00-0310
202	CSCE	544	01	999-00-0317
202	CSCE	544	01	999-00-0318
203	CSCE	595	01	005-74-7174
203	CSCE	595	01	183-64-2498
203	CSCE	595	01	269-70-2117
203	CSCE	595	01	352-66-0972
203	CSCE	595	01	413-02-6062
203	CSCE	595	01	414-17-2236
203	CSCE	595	01	467-17-0758
203	CSCE	595	01	480-86-8957

203	CSCE	595	01	529-43-6216
203	CSCE	595	01	999-00-0293
203	CSCE	595	01	999-00-0307
203	CSCE	595	01	999-00-0309
204	CSCE	595	91	005-74-7174
204	CSCE	595	91	183-64-2498
204	CSCE	595	91	269-70-2117
204	CSCE	595	91	352-66-0972
204	CSCE	595	91	413-02-6062
204	CSCE	595	91	414-17-2236
204	CSCE	595	91	467-17-0758
204	CSCE	595	91	480-86-8957
204	CSCE	595	91	529-43-6216
204	CSCE	595	91	999-00-0293
204	CSCE	595	91	999-00-0307
204	CSCE	595	91	999-00-0309
205	CSCE	623	01	005-74-7174
205	CSCE	623	01	013-52-7106
205	CSCE	623	01	183-64-2498
206	CSCE	646	01	005-74-7174
206	CSCE	646	01	013-52-7106
206	CSCE	646	01	211-58-1799
206	CSCE	646	01	296-60-5633

206	CSCE	646	01	381-74-5351
206	CSCE	646	01	414-17-2236
206	CSCE	646	01	473-86-0371
206	CSCE	646	01	574-60-5692
206	CSCE	646	01	999-00-0286
206	CSCE	646	01	999-00-0309
206	CSCE	646	01	999-00-0310
206	CSCE	646	01	999-00-0312
207	CSCE	654	01	093-54-0888
207	CSCE	654	01	252-27-3119
207	CSCE	654	01	296-60-5633
207	CSCE	654	01	311-82-3180
207	CSCE	654	01	334-72-1062
207	CSCE	654	01	370-70-6185
207	CSCE	654	01	389-66-4949
207	CSCE	654	01	392-78-2316
207	CSCE	654	01	467-17-0758
207	CSCE	654	01	473-86-0371
207	CSCE	654	01	480-86-8957
207	CSCE	654	01	520-17-9499
207	CSCE	654	01	527-96-9291
207	CSCE	654	01	528-43-9574
207	CSCE	654	01	555-85-8988

207	CSCE	654	01	559-53-3283
207	CSCE	654	01	999-00-0286
207	CSCE	654	01	999-00-0301
207	CSCE	654	01	999-00-0307
207	CSCE	654	01	999-00-0310
207	CSCE	654	01	999-00-0311
207	CSCE	654	01	999-00-0312
207	CSCE	654	01	999-00-0317
207	CSCE	654	01	999-00-0318
207	CSCE	654	01	999-00-0319
208	CSCE	656	01	252-27-3119
208	CSCE	656	01	453-13-1389
208	CSCE	656	01	548-85-3519
209	CSCE	682	01	310-76-0949
209	CSCE	682	01	510-84-9117
209	CSCE	682	01	526-75-7783
209	CSCE	682	01	600-48-5415
210	CSCE	683	01	310-76-0949
210	CSCE	683	01	453-13-1389
210	CSCE	683	01	543-17-5520
211	CSCE	686	01	013-52-7106
211	CSCE	686	01	211-58-1799
211	CSCE	686	01	296-60-5633

211	CSCE	686	01	310-76-0949
211	CSCE	686	01	352-66-0972
211	CSCE	686	01	543-17-5520
211	CSCE	686	01	548-85-3519
211	CSCE	686	01	594-54-0505
211	CSCE	686	01	999-00-0307
212	CSCE	698	01	005-74-7174
212	CSCE	698	01	013-52-7106
212	CSCE	698	01	183-64-2498
212	CSCE	698	01	211-58-1799
212	CSCE	698	01	252-27-3119
212	CSCE	698	01	269-70-2117
212	CSCE	698	01	296-60-5633
212	CSCE	698	01	310-76-0949
212	CSCE	698	01	312-94-1786
212	CSCE	698	01	334-72-1062
212	CSCE	698	01	352-66-0972
212	CSCE	698	01	381-74-5351
212	CSCE	698	01	413-02-6062
212	CSCE	698	01	414-17-2236
212	CSCE	698	01	453-13-1389
212	CSCE	698	01	467-17-0758
212	CSCE	698	01	473-86-0371

212	CSCE	698	01	480-86-8957
212	CSCE	698	01	527-96-9291
212	CSCE	698	01	529-43-6216
212	CSCE	698	01	539-64-0152
212	CSCE	698	01	543-17-5520
212	CSCE	698	01	548-85-3519
212	CSCE	698	01	555-85-8988
212	CSCE	698	01	559-53-3283
212	CSCE	698	01	574-60-5692
212	CSCE	698	01	600-48-5415
212	CSCE	698	01	999-00-0280
212	CSCE	698	01	999-00-0286
212	CSCE	698	01	999-00-0307
212	CSCE	698	01	999-00-0309
212	CSCE	698	01	999-00-0310
212	CSCE	698	01	999-00-0311
212	CSCE	698	01	999-00-0312
212	CSCE	698	01	999-00-0317
212	CSCE	698	01	999-00-0318
213	CSCE	793	01	312-94-1786
213	CSCE	793	01	334-72-1062
213	CSCE	793	01	352-66-0972
213	CSCE	793	01	413-02-6062

213	CSCE	793	01	529-43-6216
213	CSCE	793	01	539-64-0152
213	CSCE	793	01	543-17-5520
213	CSCE	793	01	548-85-3519
213	CSCE	793	01	559-53-3283
213	CSCE	793	01	574-60-5692
213	CSCE	793	01	600-48-5415
213	CSCE	793	01	999-00-0311
213	CSCE	793	01	999-00-0312
214	CSCE	793	91	312-94-1786
214	CSCE	793	91	334-72-1062
214	CSCE	793	91	352-66-0972
214	CSCE	793	91	413-02-6062
214	CSCE	793	91	529-43-6216
214	CSCE	793	91	539-64-0152
214	CSCE	793	91	543-17-5520
214	CSCE	793	91	548-85-3519
214	CSCE	793	91	559-53-3283
214	CSCE	793	91	574-60-5692
214	CSCE	793	91	600-48-5415
214	CSCE	793	91	999-00-0311
214	CSCE	793	91	999-00-0312
215	EENG	533	01	066-66-0823

215	EENG	533	01	077-68-9156
215	EENG	533	01	093-54-0888
215	EENG	533	01	152-76-8630
215	EENG	533	01	211-60-1839
215	EENG	533	01	311-82-3180
215	EENG	533	01	326-64-5200
215	EENG	533	01	336-52-9834
215	EENG	533	01	370-70-6185
215	EENG	533	01	389-66-4949
215	EENG	533	01	392-78-2316
215	EENG	533	01	429-45-3616
215	EENG	533	01	505-15-1953
215	EENG	533	01	516-13-9290
215	EENG	533	01	525-45-1222
215	EENG	533	01	528-43-9574
215	EENG	533	01	558-43-9859
215	EENG	533	01	589-07-9792
215	EENG	533	01	999-00-0316
215	EENG	533	01	999-00-0320
216	EENG	533	91	066-66-0823
216	EENG	533	91	077-68-9156
216	EENG	533	91	093-54-0888
216	EENG	533	91	152-76-8630

216	EENG	533	91	211-60-1839
216	EENG	533	91	311-82-3180
216	EENG	533	91	326-64-5200
216	EENG	533	91	336-52-9834
216	EENG	533	91	370-70-6185
216	EENG	533	91	389-66-4949
216	EENG	533	91	392-78-2316
216	EENG	533	91	429-45-3616
216	EENG	533	91	505-15-1953
216	EENG	533	91	516-13-9290
216	EENG	533	91	525-45-1222
216	EENG	533	91	528-43-9574
216	EENG	533	91	558-43-9859
216	EENG	533	91	589-07-9792
216	EENG	533	91	999-00-0316
216	EENG	533	91	999-00-0320
217	EENG	621	01	002-78-1969
217	EENG	621	01	183-64-2498
217	EENG	621	01	336-52-9834
217	EENG	621	01	429-45-3616
217	EENG	621	01	516-13-9290
217	EENG	621	01	598-09-4953
218	EENG	625	01	077-68-9156

218	EENG	625	01	249-17-8435
218	EENG	625	01	301-80-8703
218	EENG	625	01	339-80-9364
218	EENG	625	01	367-92-6632
218	EENG	625	01	370-70-6185
218	EENG	625	01	389-66-4949
218	EENG	625	01	520-17-9499
218	EENG	625	01	546-45-5750
218	EENG	625	01	598-09-4953
219	EENG	629	01	301-80-8703
219	EENG	629	01	520-17-9499
219	EENG	629	01	999-00-0319
220	EENG	630	01	249-17-8435
220	EENG	630	01	301-80-8703
220	EENG	630	01	339-80-9364
220	EENG	630	01	367-92-6632
220	EENG	630	01	516-13-9290
220	EENG	630	01	521-33-7529
220	EENG	630	01	546-45-5750
220	EENG	630	01	567-75-3710
221	EENG	635	01	152-76-8630
221	EENG	635	01	558-43-9859
221	EENG	635	01	589-07-9792

222	EENG	640	01	066-66-0823
222	EENG	640	01	211-60-1839
222	EENG	640	01	505-15-1953
222	EENG	640	01	582-97-1702
222	EENG	640	01	999-00-0285
223	EENG	670	01	002-78-1969
223	EENG	670	01	077-68-9156
223	EENG	670	01	093-54-0888
223	EENG	670	01	311-82-3180
223	EENG	670	01	336-52-9834
223	EENG	670	01	370-70-6185
223	EENG	670	01	389-66-4949
223	EENG	670	01	392-78-2316
223	EENG	670	01	429-45-3616
223	EENG	670	01	504-06-2516
223	EENG	670	01	516-13-9290
223	EENG	670	01	528-43-9574
223	EENG	670	01	567-75-3710
223	EENG	670	01	598-09-4953
223	EENG	670	01	999-00-0301
223	EENG	670	01	999-00-0319
224	EENG	695	01	408-55-1091
224	EENG	695	01	445-68-9745

225	EENG	695	91	408-55-1091
225	EENG	695	91	445-68-9745
226	EENG	698	01	002-78-1969
226	EENG	698	01	066-66-0823
226	EENG	698	01	077-68-9156
226	EENG	698	01	093-54-0888
226	EENG	698	01	152-76-8630
226	EENG	698	01	211-60-1839
226	EENG	698	01	249-17-8435
226	EENG	698	01	301-80-8703
226	EENG	698	01	311-82-3180
226	EENG	698	01	336-52-9834
226	EENG	698	01	339-80-9364
226	EENG	698	01	367-92-6632
226	EENG	698	01	370-70-6185
226	EENG	698	01	389-66-4949
226	EENG	698	01	392-78-2316
226	EENG	698	01	408-55-1091
226	EENG	698	01	429-45-3616
226	EENG	698	01	445-68-9745
226	EENG	698	01	505-15-1953
226	EENG	698	01	516-13-9290
226	EENG	698	01	520-17-9499

226	EENG	698	01	521-33-7529
226	EENG	698	01	528-43-9574
226	EENG	698	01	546-45-5750
226	EENG	698	01	558-43-9859
226	EENG	698	01	567-75-3710
226	EENG	698	01	589-07-9792
226	EENG	698	01	598-09-4953
226	EENG	698	01	999-00-0301
226	EENG	698	01	999-00-0319
227	EENG	700	01	336-52-9834
227	EENG	700	01	339-80-9364
227	EENG	700	01	367-92-6632
227	EENG	700	01	521-33-7529
227	EENG	700	01	546-45-5750
227	EENG	700	01	999-00-0319
228	EENG	708	01	066-66-0823
228	EENG	708	01	211-60-1839
228	EENG	708	01	505-15-1953
228	EENG	708	01	582-97-1702
229	EENG	766	01	152-76-8630
229	EENG	766	01	211-60-1839
229	EENG	766	01	505-15-1953
229	EENG	766	01	558-43-9859

229	EENG	766	01	582-97-1702
229	EENG	766	01	589-07-9792
229	EENG	766	01	999-00-0285
301	CHEM	585	01	116-68-7877
301	CHEM	585	01	251-49-4794
301	CHEM	585	01	267-81-4973
301	CHEM	585	01	392-86-9912
301	CHEM	585	01	398-86-5509
301	CHEM	585	01	401-11-9897
301	CHEM	585	01	474-86-8746
301	CHEM	585	01	516-96-8455
301	CHEM	585	01	539-98-4428
302	CHEM	675	01	061-58-6522
302	CHEM	675	01	116-56-4832
302	CHEM	675	01	226-27-8496
302	CHEM	675	01	526-13-8757
303	EVSC	560	01	116-68-7877
303	EVSC	560	01	251-49-4794
303	EVSC	560	01	267-81-4973
303	EVSC	560	01	398-86-5509
303	EVSC	560	01	474-86-8746
303	EVSC	560	01	516-96-8455
303	EVSC	560	01	539-98-4428

304	EVSC	670	01	005-82-0235
304	EVSC	670	01	008-48-6719
304	EVSC	670	01	229-23-2317
304	EVSC	670	01	372-04-2899
304	EVSC	670	01	401-11-9897
304	EVSC	670	01	488-86-7408
304	EVSC	670	01	527-25-1736
304	EVSC	670	01	554-19-9797
304	EVSC	670	01	572-15-7130
305	METG	630	01	017-62-8627
305	METG	630	01	023-52-7817
305	METG	630	01	261-73-9432
305	METG	630	01	263-63-8302
305	METG	630	01	399-68-3166
305	METG	630	01	414-49-4391
305	METG	630	01	459-79-1577
305	METG	630	01	460-33-1803
305	METG	630	01	480-60-4053
305	METG	630	01	504-78-8469
305	METG	630	01	510-84-9117
305	METG	630	01	526-75-7783
306	METG	630	91	017-62-8627
306	METG	630	91	023-52-7817

306	METG	630	91	261-73-9432
306	METG	630	91	263-63-8302
306	METG	630	91	399-68-3166
306	METG	630	91	414-49-4391
306	METG	630	91	459-79-1577
306	METG	630	91	460-33-1803
306	METG	630	91	480-60-4053
306	METG	630	91	504-78-8469
306	METG	630	91	510-84-9117
306	METG	630	91	526-75-7783
307	METG	642	01	017-62-8627
307	METG	642	01	023-52-7817
307	METG	642	01	261-73-9432
307	METG	642	01	263-63-8302
307	METG	642	01	399-68-3166
307	METG	642	01	414-49-4391
307	METG	642	01	459-79-1577
307	METG	642	01	460-33-1803
307	METG	642	01	480-60-4053
307	METG	642	01	504-78-8469
307	METG	642	01	510-84-9117
308	METG	798	01	017-62-8627
308	METG	798	01	023-52-7817

308	METG	798	01	261-73-9432
308	METG	798	01	263-63-8302
308	METG	798	01	399-68-3166
308	METG	798	01	414-49-4391
308	METG	798	01	459-79-1577
308	METG	798	01	460-33-1803
308	METG	798	01	480-60-4053
308	METG	798	01	504-78-8469
308	METG	798	01	510-84-9117
308	METG	798	01	526-75-7783
309	NENG	560	01	005-82-0235
309	NENG	560	01	008-48-6719
309	NENG	560	01	229-23-2317
309	NENG	560	01	372-04-2899
309	NENG	560	01	445-68-9745
309	NENG	560	01	488-86-7408
309	NENG	560	01	527-25-1736
309	NENG	560	01	554-19-9797
309	NENG	560	01	572-15-7130
310	NENG	631	01	005-82-0235
310	NENG	631	01	008-48-6719
310	NENG	631	01	229-23-2317
310	NENG	631	01	372-04-2899

310	NENG	631	01	488-86-7408
310	NENG	631	01	527-25-1736
310	NENG	631	01	554-19-9797
310	NENG	631	01	572-15-7130
311	OENG	620	01	026-52-5136
311	OENG	620	01	141-64-0398
311	OENG	620	01	196-68-0831
311	OENG	620	01	436-19-7283
311	OENG	620	01	504-06-2516
311	OENG	620	01	530-74-6962
311	OENG	620	01	573-97-3421
311	OENG	620	01	594-32-7819
312	OENG	650	01	026-52-5136
312	OENG	650	01	141-64-0398
312	OENG	650	01	196-68-0831
312	OENG	650	01	249-17-8435
312	OENG	650	01	301-80-8703
312	OENG	650	01	367-92-6632
312	OENG	650	01	436-19-7283
312	OENG	650	01	504-06-2516
312	OENG	650	01	521-33-7529
312	OENG	650	01	530-74-6962
312	OENG	650	01	546-45-5750

312	OENG	650	01	573-97-3421
312	OENG	650	01	594-32-7819
313	PHYS	519	01	017-62-8627
313	PHYS	519	01	023-52-7817
313	PHYS	519	01	261-73-9432
313	PHYS	519	01	263-63-8302
313	PHYS	519	01	399-68-3166
313	PHYS	519	01	414-49-4391
313	PHYS	519	01	459-79-1577
313	PHYS	519	01	460-33-1803
313	PHYS	519	01	480-60-4053
313	PHYS	519	01	504-78-8469
313	PHYS	519	01	510-84-9117
313	PHYS	519	01	526-75-7783
313	PHYS	519	01	550-29-9749
314	PHYS	542	01	026-52-5136
314	PHYS	542	01	141-64-0398
314	PHYS	542	01	196-68-0831
314	PHYS	542	01	436-19-7283
314	PHYS	542	01	504-06-2516
314	PHYS	542	01	530-74-6962
314	PHYS	542	01	573-97-3421
314	PHYS	542	01	594-32-7819

315	PHYS	542	91	026-52-5136
315	PHYS	542	91	141-64-0398
315	PHYS	542	91	196-68-0831
315	PHYS	542	91	436-19-7283
315	PHYS	542	91	504-06-2516
315	PHYS	542	91	530-74-6962
315	PHYS	542	91	573-97-3421
315	PHYS	542	91	594-32-7819
316	PHYS	650	01	026-52-5136
316	PHYS	650	01	061-58-6522
316	PHYS	650	01	116-56-4832
316	PHYS	650	01	141-64-0398
316	PHYS	650	01	196-68-0831
316	PHYS	650	01	226-27-8496
316	PHYS	650	01	436-19-7283
316	PHYS	650	01	526-13-8757
316	PHYS	650	01	530-74-6962
316	PHYS	650	01	573-97-3421
316	PHYS	650	01	594-32-7819
317	PHYS	798	01	005-82-0235
317	PHYS	798	01	008-48-6719
317	PHYS	798	01	026-52-5136
317	PHYS	798	01	061-58-6522

317	PHYS	798	01	116-56-4832
317	PHYS	798	01	141-64-0398
317	PHYS	798	01	196-68-0831
317	PHYS	798	01	224-35-5121
317	PHYS	798	01	226-27-8496
317	PHYS	798	01	229-23-2317
317	PHYS	798	01	272-76-3876
317	PHYS	798	01	307-88-1041
317	PHYS	798	01	368-96-5334
317	PHYS	798	01	372-04-2899
317	PHYS	798	01	436-19-7283
317	PHYS	798	01	481-88-7469
317	PHYS	798	01	488-86-7408
317	PHYS	798	01	504-06-2516
317	PHYS	798	01	526-13-8757
317	PHYS	798	01	527-25-1736
317	PHYS	798	01	530-74-6962
317	PHYS	798	01	544-92-0760
317	PHYS	798	01	554-19-9797
317	PHYS	798	01	571-43-1820
317	PHYS	798	01	572-15-7130
317	PHYS	798	01	573-97-3421
317	PHYS	798	01	594-32-7819

401	OPER	403	01	135-66-3641
401	OPER	403	01	145-76-4239
401	OPER	403	01	155-62-9418
401	OPER	403	01	167-52-5679
401	OPER	403	01	197-48-0279
401	OPER	403	01	230-25-4803
401	OPER	403	01	298-72-3524
401	OPER	403	01	307-90-7774
401	OPER	403	01	334-60-9745
401	OPER	403	01	407-06-8356
401	OPER	403	01	410-43-5582
401	OPER	403	01	426-06-7661
401	OPER	403	01	441-76-2966
401	OPER	403	01	452-37-8068
401	OPER	403	01	452-93-3772
401	OPER	403	01	468-84-9447
401	OPER	403	01	493-64-0852
401	OPER	403	01	507-88-4212
401	OPER	403	01	508-76-1824
401	OPER	403	01	512-78-6647
401	OPER	403	01	521-33-4756
401	OPER	403	01	528-43-6241
401	OPER	403	01	537-92-9102

401	OPER	403	01	540-08-9450
401	OPER	403	01	541-13-1388
401	OPER	403	01	553-91-1466
401	OPER	403	01	594-28-2049
401	OPER	403	01	594-54-0505
401	OPER	403	01	999-00-0304
401	OPER	403	01	999-00-0305
401	OPER	403	01	999-00-0314
401	OPER	403	01	999-00-0315
402	OPER	561	01	135-66-3641
402	OPER	561	01	145-76-4239
402	OPER	561	01	155-62-9418
402	OPER	561	01	167-52-5679
402	OPER	561	01	175-52-4913
402	OPER	561	01	197-48-0279
402	OPER	561	01	230-25-4803
402	OPER	561	01	298-72-3524
402	OPER	561	01	307-90-7774
402	OPER	561	01	323-80-4274
402	OPER	561	01	334-60-9745
402	OPER	561	01	407-06-8356
402	OPER	561	01	410-43-5582
403	OPER	561	02	426-06-7661

403	OPER	561	02	441-76-2966
403	OPER	561	02	452-37-8068
403	OPER	561	02	452-93-3772
403	OPER	561	02	468-84-9447
403	OPER	561	02	493-64-0852
403	OPER	561	02	507-88-4212
403	OPER	561	02	508-76-1824
403	OPER	561	02	512-78-6647
403	OPER	561	02	512-86-0931
403	OPER	561	02	521-33-4756
403	OPER	561	02	528-43-6241
404	OPER	561	03	537-92-9102
404	OPER	561	03	540-08-9450
404	OPER	561	03	541-13-1388
404	OPER	561	03	553-91-1466
404	OPER	561	03	594-28-2049
404	OPER	561	03	594-54-0505
404	OPER	561	03	999-00-0304
404	OPER	561	03	999-00-0305
404	OPER	561	03	999-00-0314
404	OPER	561	03	999-00-0315
405	OPER	601	01	140-72-2212
405	OPER	601	01	146-52-4613

405	OPER	601	01	198-44-5901
405	OPER	601	01	289-46-5275
405	OPER	601	01	325-52-2221
405	OPER	601	01	350-54-0036
405	OPER	601	01	557-37-7803
406	OPER	610	01	135-66-3641
406	OPER	610	01	145-76-4239
406	OPER	610	01	155-62-9418
406	OPER	610	01	167-52-5679
406	OPER	610	01	197-48-0279
406	OPER	610	01	230-25-4803
406	OPER	610	01	298-72-3524
406	OPER	610	01	307-90-7774
406	OPER	610	01	334-60-9745
406	OPER	610	01	407-06-8356
406	OPER	610	01	410-43-5582
407	OPER	610	02	426-06-7661
407	OPER	610	02	441-76-2966
407	OPER	610	02	452-37-8068
407	OPER	610	02	452-93-3772
407	OPER	610	02	468-84-9447
407	OPER	610	02	493-64-0852
407	OPER	610	02	507-88-4212

407	OPER	610	02	508-76-1824
407	OPER	610	02	512-78-6647
407	OPER	610	02	521-33-4756
407	OPER	610	02	528-43-6241
408	OPER	610	03	537-92-9102
408	OPER	610	03	540-08-9450
408	OPER	610	03	541-13-1388
408	OPER	610	03	553-91-1466
408	OPER	610	03	594-28-2049
408	OPER	610	03	594-54-0505
408	OPER	610	03	999-00-0304
408	OPER	610	03	999-00-0305
408	OPER	610	03	999-00-0314
408	OPER	610	03	999-00-0315
409	OPER	645	01	034-60-2463
409	OPER	645	01	136-58-7235
409	OPER	645	01	186-56-4516
409	OPER	645	01	249-08-3472
409	OPER	645	01	274-72-3552
409	OPER	645	01	280-84-6377
409	OPER	645	01	282-76-4447
409	OPER	645	01	290-72-0482
409	OPER	645	01	307-90-7774

409	OPER	645	01	374-94-8176
409	OPER	645	01	398-86-5509
409	OPER	645	01	450-33-9846
409	OPER	645	01	515-66-9344
409	OPER	645	01	525-45-1222
409	OPER	645	01	528-43-6241
409	OPER	645	01	529-65-6705
409	OPER	645	01	531-04-5076
409	OPER	645	01	540-72-0433
501	EMGT	571	01	034-60-2463
501	EMGT	571	01	116-68-7877
501	EMGT	571	01	136-58-7235
501	EMGT	571	01	251-39-9136
501	EMGT	571	01	251-49-4794
501	EMGT	571	01	267-81-4973
501	EMGT	571	01	274-72-3552
501	EMGT	571	01	374-94-8176
501	EMGT	571	01	392-86-9912
501	EMGT	571	01	398-86-5509
501	EMGT	571	01	450-33-9846
501	EMGT	571	01	474-86-8746
501	EMGT	571	01	512-86-0931
501	EMGT	571	01	516-96-8455

501	EMGT	571	01	539-98-4428
501	EMGT	571	01	600-12-7720
502	ENVR	503	01	034-60-2463
502	ENVR	503	01	116-68-7877
502	ENVR	503	01	136-58-7235
502	ENVR	503	01	251-39-9136
502	ENVR	503	01	251-49-4794
502	ENVR	503	01	267-81-4973
502	ENVR	503	01	274-72-3552
502	ENVR	503	01	374-94-8176
502	ENVR	503	01	392-86-9912
502	ENVR	503	01	398-86-5509
502	ENVR	503	01	450-33-9846
502	ENVR	503	01	474-86-8746
502	ENVR	503	01	512-86-0931
502	ENVR	503	01	516-96-8455
502	ENVR	503	01	539-98-4428
502	ENVR	503	01	600-12-7720
503	ENVR	535	01	116-68-7877
503	ENVR	535	01	251-39-9136
503	ENVR	535	01	251-49-4794
503	ENVR	535	01	267-81-4973
503	ENVR	535	01	539-98-4428

503	ENVR	535	01	600-12-7720
504	ENVR	621	01	000-00-000
505	ENVR	623	01	251-39-9136
601	MECH	533	01	249-08-3472
601	MECH	533	01	280-84-6377
601	MECH	533	01	281-66-8916
601	MECH	533	01	290-72-0482
601	MECH	533	01	368-02-1768
601	MECH	533	01	515-66-9344
601	MECH	533	01	525-45-1222
601	MECH	533	01	534-04-2575
601	MECH	533	01	540-72-0433
602	MECH	605	01	295-70-3221
602	MECH	605	01	326-64-5200
602	MECH	605	01	417-19-0228
602	MECH	605	01	437-63-1190
603	MECH	620	01	175-52-4913
603	MECH	620	01	323-80-4274
604	MECH	628	01	086-56-5916
604	MECH	628	01	175-52-4913
604	MECH	628	01	278-88-7980
604	MECH	628	01	326-64-5200
604	MECH	628	01	550-29-9749

605	MECH	636	01	249-08-3472
605	MECH	636	01	281-66-8916
605	MECH	636	01	290-72-0482
605	MECH	636	01	368-02-1768
605	MECH	636	01	534-04-2575
605	MECH	636	01	540-72-0433
606	MECH	642	01	249-08-3472
606	MECH	642	01	285-60-3689
606	MECH	642	01	295-70-3221
606	MECH	642	01	417-19-0228
606	MECH	642	01	437-63-1190
606	MECH	642	01	534-04-2575
607	MECH	723	01	086-56-5916
607	MECH	723	01	368-02-1768
608	MENG	531	01	186-56-4516
608	MENG	531	01	249-08-3472
608	MENG	531	01	280-84-6377
608	MENG	531	01	281-66-8916
608	MENG	531	01	282-76-4447
608	MENG	531	01	290-72-0482
608	MENG	531	01	368-02-1768
608	MENG	531	01	417-19-0228
608	MENG	531	01	437-63-1190

608	MENG	531	01	515-66-9344
608	MENG	531	01	522-29-7818
608	MENG	531	01	525-45-1222
608	MENG	531	01	529-65-6705
608	MENG	531	01	531-04-5076
608	MENG	531	01	540-72-0433
608	MENG	531	01	999-00-0316
608	MENG	531	01	999-00-0320
609	MENG	732	01	278-88-7980
609	MENG	732	01	295-70-3221
609	MENG	732	01	437-63-1190
609	MENG	732	01	522-29-7818
610	SENG	535	01	186-56-4516
610	SENG	535	01	249-08-3472
610	SENG	535	01	280-84-6377
610	SENG	535	01	282-76-4447
610	SENG	535	01	290-72-0482
610	SENG	535	01	515-66-9344
610	SENG	535	01	525-45-1222
610	SENG	535	01	529-65-6705
610	SENG	535	01	531-04-5076
610	SENG	535	01	540-72-0433
611	SENG	665	01	086-56-5916

611	SENG	665	01	326-64- 5200
611	SENG	665	01	534-04- 2575

Bibliography

- Alvarez-Valdez, G., Martin G. & Tamarit, J.M. "Constructing Good Solutions for the Spanish School Timetabling Problem." *Journal of the Operational Research Society*, 1996, 47, 1203-1215.
- Bloomfield, S.D., & McSharry, M.M. "Preferential Course Scheduling." *INTERFACES*, 1979, 9(4), 24-31.
- Costa, Daniel. "A Tabu Search Algorithm for Computing an Operational Timetable." *European Journal of Operational Research*, 1994, 76, 98-110.
- Clemens, Robert T. *Making Hard Decisions*. Belmont: Duxbury, 1996.
- Ferland, J.A. & Fleurent, C. "SAPHIR: A Decision Support System for Course Scheduling." *INTERFACES*, 1994, 24, 105-115.
- Graves, R.L., Linus, S., & Sankaran, J. "An Auction Method for Course Registration." *INTERFACES*, 1993, 23, 81-92.
- Keeney, Ralph L. *Value-Focused Thinking*. London: Harvard University Press, 1992.
- Kirkwood, Craig W, *Strategic Decision Making*. Belmont: Duxbury, 1997.
- Mulvey, John M. "A classroom/time assignment model." *European Journal of Operations Research*, 1982, 9, 64-70.
- Patterson, J.H. & Albracht, J.J. "Assembly-Line Balancing: Zero-One Programming with Fibonacci Search." *Operations Research*, 1975, 5(3), 166-172.
- Sampson, S.E., Freeland, J.R., & Weiss, E.N. "Class Scheduling to Maximize Participant Satisfaction." *INTERFACES*, 1995, 25, 30-41.
- Sampson, S.E., & Weiss, E.N. "Increasing Levels in Conference and Educational Scheduling: A Heuristic Approach." *Management Science*, 1995, 41(11), 1816-1825.