



**ATOMISTIC MODELLING OF CROSS
SLIP AND ITS CONTRIBUTION TO THE
UNDERSTANDING OF TEXTURE AND
FATIGUE IN FCC MATERIALS**

T. Leffers and O.B. Pedersen

**The Engineering Science Centre for
Structural Characterization and Modelling of
Materials**

**Materials Research Department
Risø National Laboratory
DK-4000 Roskilde, Denmark**

**Ghost co-authors: Our friends and colleagues at Center for Atomic-
Scale Materials Physics at the Technical University of Denmark**

Report Documentation Page

*Form Approved
OMB No. 0704-0188*

Public reporting burden for the collection of information is estimated to average 1 hour per response, including the time for reviewing instructions, searching existing data sources, gathering and maintaining the data needed, and completing and reviewing the collection of information. Send comments regarding this burden estimate or any other aspect of this collection of information, including suggestions for reducing this burden, to Washington Headquarters Services, Directorate for Information Operations and Reports, 1215 Jefferson Davis Highway, Suite 1204, Arlington VA 22202-4302. Respondents should be aware that notwithstanding any other provision of law, no person shall be subject to a penalty for failing to comply with a collection of information if it does not display a currently valid OMB control number.

1. REPORT DATE 18 MAR 2004	2. REPORT TYPE N/A	3. DATES COVERED -	
4. TITLE AND SUBTITLE Atomistic Modelling Of Cross Slip And Its Contribution To The Understanding Of Texture And Fatigue In Fcc Materials		5a. CONTRACT NUMBER	
		5b. GRANT NUMBER	
		5c. PROGRAM ELEMENT NUMBER	
6. AUTHOR(S)		5d. PROJECT NUMBER	
		5e. TASK NUMBER	
		5f. WORK UNIT NUMBER	
7. PERFORMING ORGANIZATION NAME(S) AND ADDRESS(ES) Materials Research Department Risø National Laboratory DK-4000 Roskilde, Denmark		8. PERFORMING ORGANIZATION REPORT NUMBER	
9. SPONSORING/MONITORING AGENCY NAME(S) AND ADDRESS(ES)		10. SPONSOR/MONITOR'S ACRONYM(S)	
		11. SPONSOR/MONITOR'S REPORT NUMBER(S)	
12. DISTRIBUTION/AVAILABILITY STATEMENT Approved for public release, distribution unlimited			
13. SUPPLEMENTARY NOTES See also ADM001672., The original document contains color images.			
14. ABSTRACT			
15. SUBJECT TERMS			
16. SECURITY CLASSIFICATION OF:			17. LIMITATION OF ABSTRACT
a. REPORT NATO/unclassified	b. ABSTRACT unclassified	c. THIS PAGE unclassified	UU
			18. NUMBER OF PAGES 34
			19a. NAME OF RESPONSIBLE PERSON

PLAN FOR THE PRESENTATION

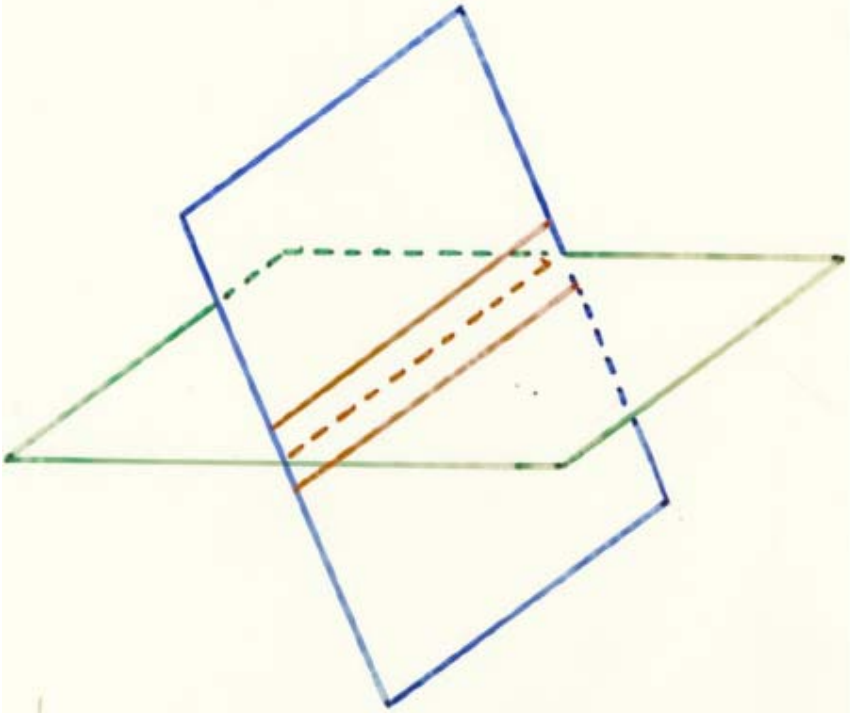
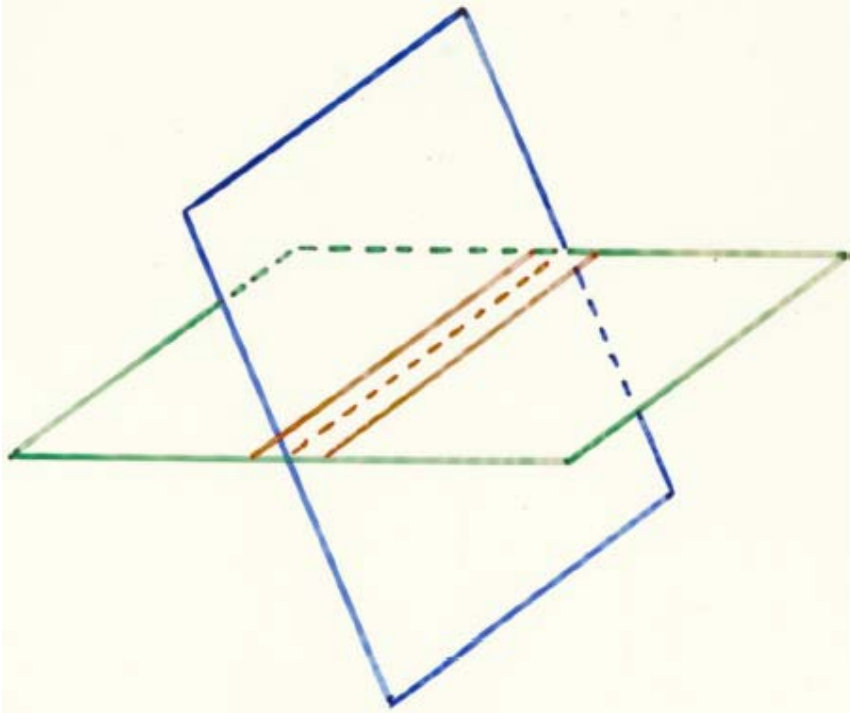
- **The concept of cross slip**
- **Atomic-scale modelling of cross slip for copper**
- **fcc rolling-texture transition**
- **Fatigue in FCC metals**
- **Conclusion**

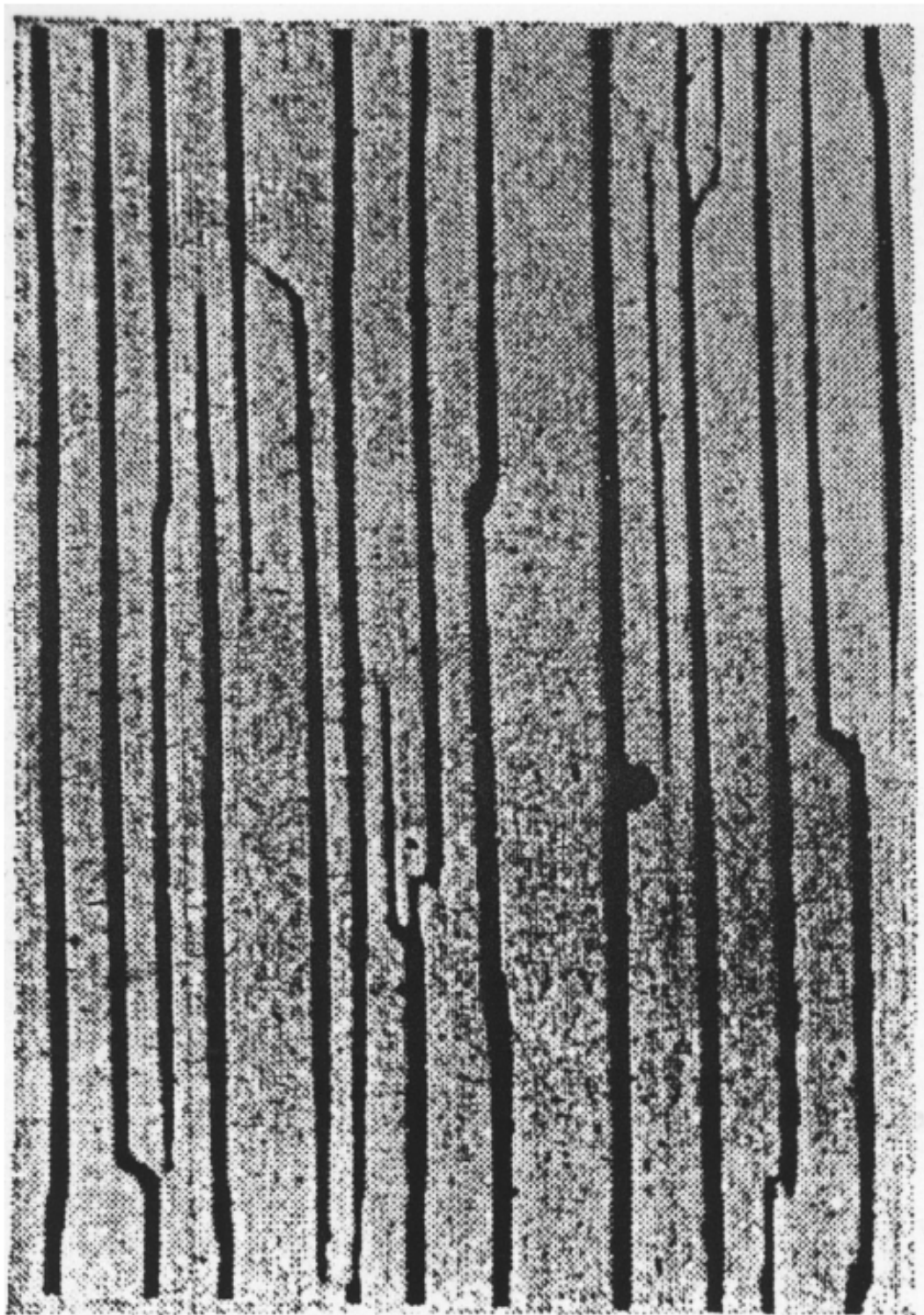
CROSS SLIP

Normally the slip plane of a dislocation is fixed geometrically. It is the plane defined by the Burgers vector and the line vector.

For screw dislocations Burgers vector and line vector are parallel, and therefore they do not define a specific slip plane.

And therefore screw dislocations can “cross slip”.





RISØ

CROSS SLIP can

- **lead to annihilation of screw-dislocation dipoles**
- **help screw dislocations to bypass obstacles**

ATOMIC-SCALE MODELLING OF CROSS SLIP

Interatomic potential:

Derived from Effective Medium Theory. The potential reproduces the elastic properties of copper quite well, but it leads to a stacking fault energy of 31 mJm^{-2} which is smaller than the experimentally derived value of $\sim 50 \text{ mJm}^{-2}$.

Procedure

Molecular Dynamics is the ideal procedure, but for the typical situation with a complex process like cross slip present-day computers have insufficient capacity for Molecular Dynamics. However, we have succeeded in one case.

Normally we use the “Nudged Elastic Band” procedure. We specify the initial and the final configuration, and the computer finds the minimum-energy pass in multi-dimensional configuration space.

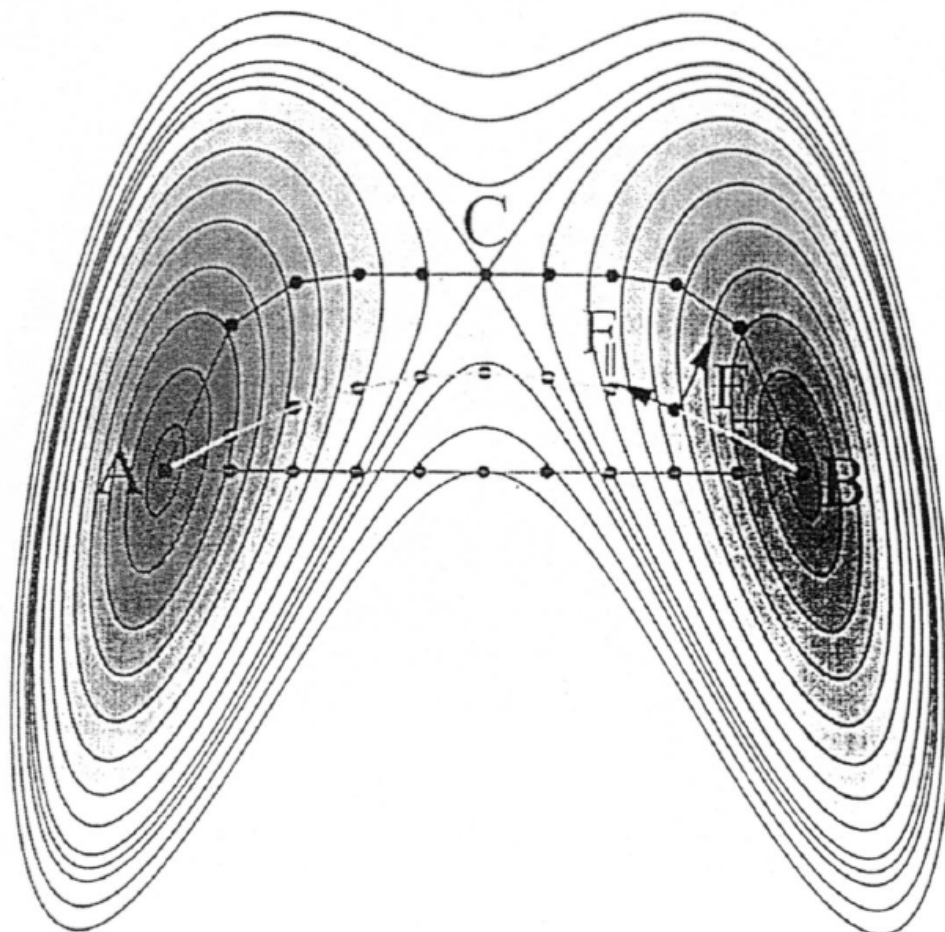


Fig. 1. A schematic representation of a potential energy surface (PES), shown in 2D. The two minima (A) and (B) are separated by a transition state (C). The nudged elastic band (NEB) is used to locate the minimum energy path (MEP), i.e. the path from (A) to (B), where the forces from the potential perpendicular to the path (F_{\perp}) are zero.

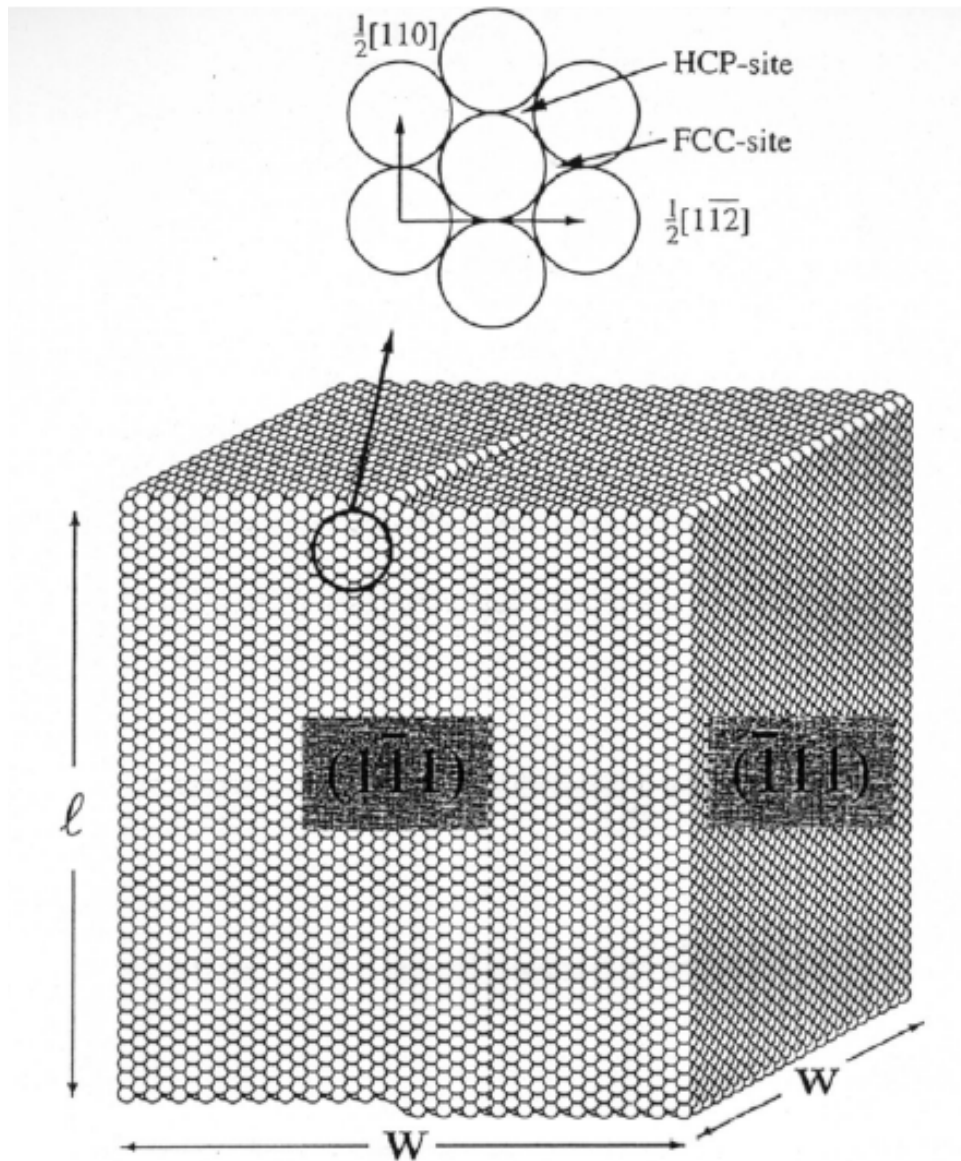


FIG. 2. A medium-size system consisting of 73 960 atoms. The system contains one centered screw dislocation parallel to the $[110]$ direction perpendicular to the top surface. The surface step is parallel to the $(\bar{1}\bar{1}1)$ plane. The width of the two $\{111\}$ planes is $w=9.5$ nm, and the length of the dislocation (the height of the crystal) is $l=40b$ (10.2 nm). The inset shows the difference between fcc and hcp sites in the $(\bar{1}\bar{1}1)$ plane.

RESULTING ACTIVATION ENERGIES

For an individual non-jogged screw dislocation the theoretical activation energy for cross slip is $\sim 3\text{eV}$, which is prohibitively high for cross slip at room temperature.

For an individual jogged screw dislocation the theoretical activation energy for cross slip is 0.87eV in apparent agreement with the experimental value of $1.15\text{eV} \pm 0.37\text{eV}$ derived by Bonneville et al. (1988).

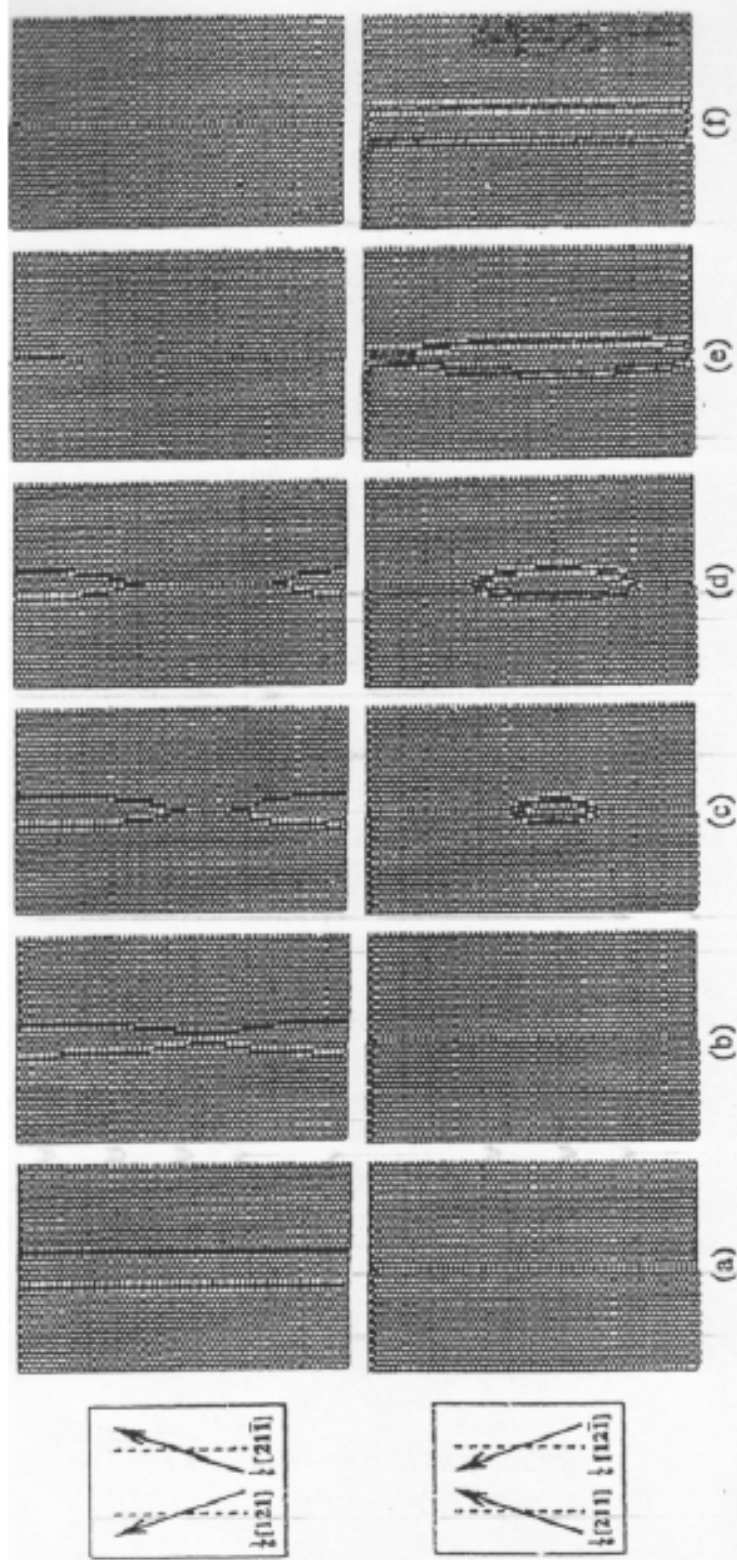
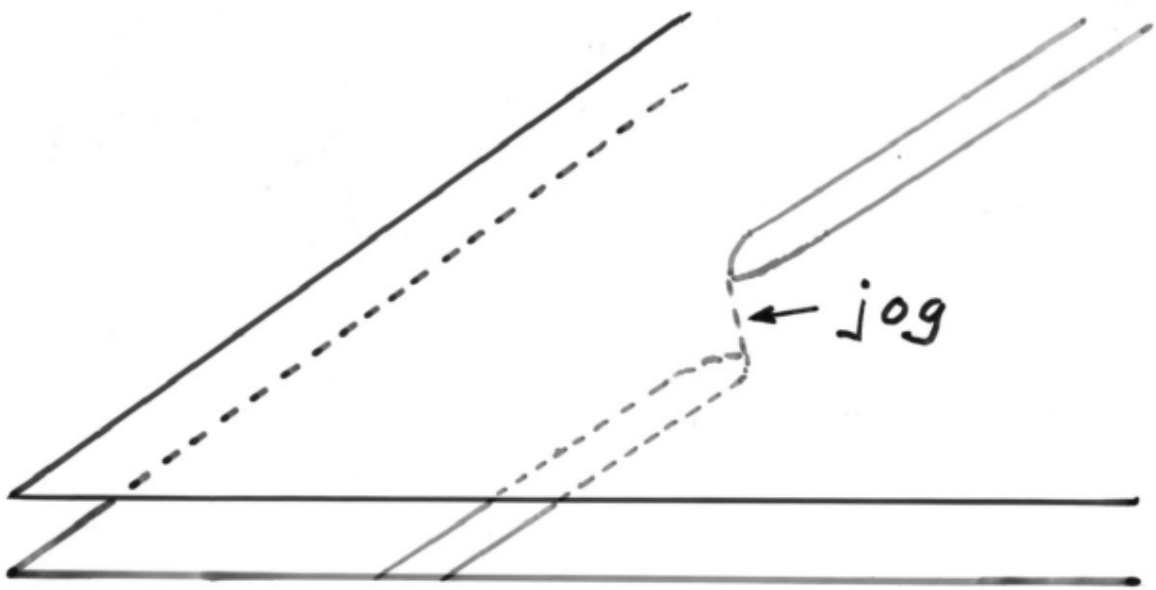


Fig 28. Rasmussen et al. [103]: atomistic calculations according to the nudged elastic band (NEB) method. In the upper row the atom configuration in the primary glide plane, in the lower row the atom configuration in the cross-slip plane is shown. As the dislocation constricts it vanishes from the primary glide plane and emerges in the cross-slip plane.



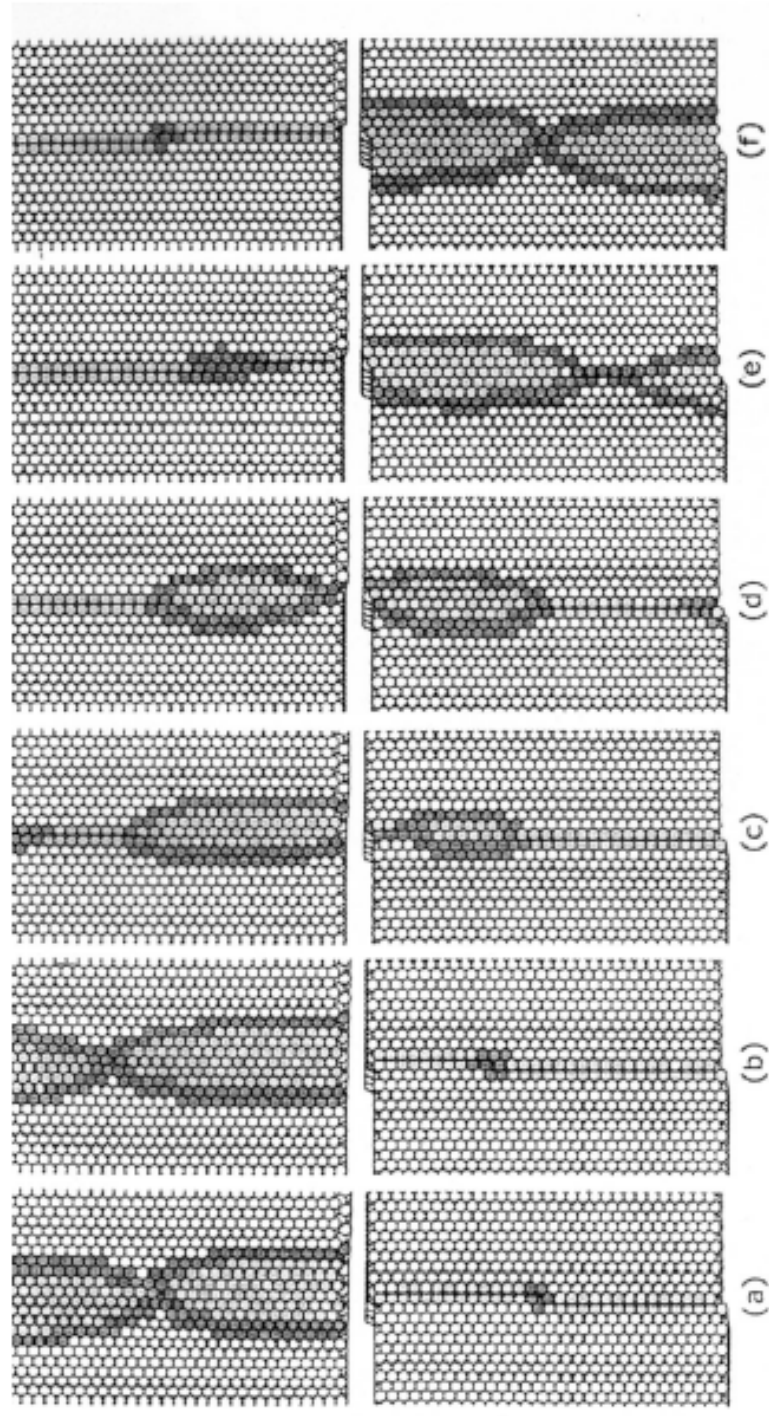


Figure 2. Cross-slip with an elementary jog $\mathbf{l}_2 = a[001]$ moving conservatively in the $(1\bar{1}0)[110]$ non-octahedral slip system, where the top row shows the primary glide plane $(1\bar{1}1)$, and the bottom row shows the cross-slip plane $(\bar{1}11)$: (a) initial configuration; (b) conservative motion of the jog along the dislocation line; (c) unzipping into the cross-slip plane; (d) the transition state; (e), (f) further unzipping into the final config-

KINETICS OF CROSS SLIP IN COPPER

Cross-slip frequency (F) at room temperature

	E(eV)	F(m ⁻³ s ¹)
Without jogs	3.4	4.10 ⁻²⁵
With jogs " " "	0.86	3.10 ¹⁶

Time elapsed since Big Bang: 5.10¹⁷s.

CROSS SLIP OF ONE ISOLATED NON-JOGGED SCREW DISLOCATION IN “NICKEL”

	Material	SFE (mJ m^{-2})	E(eV)
Rao et al.	Ni(1)	58	4.85
” ” ”	Ni(2)	119	2.35
Present authors	“Ni”	54	5.34

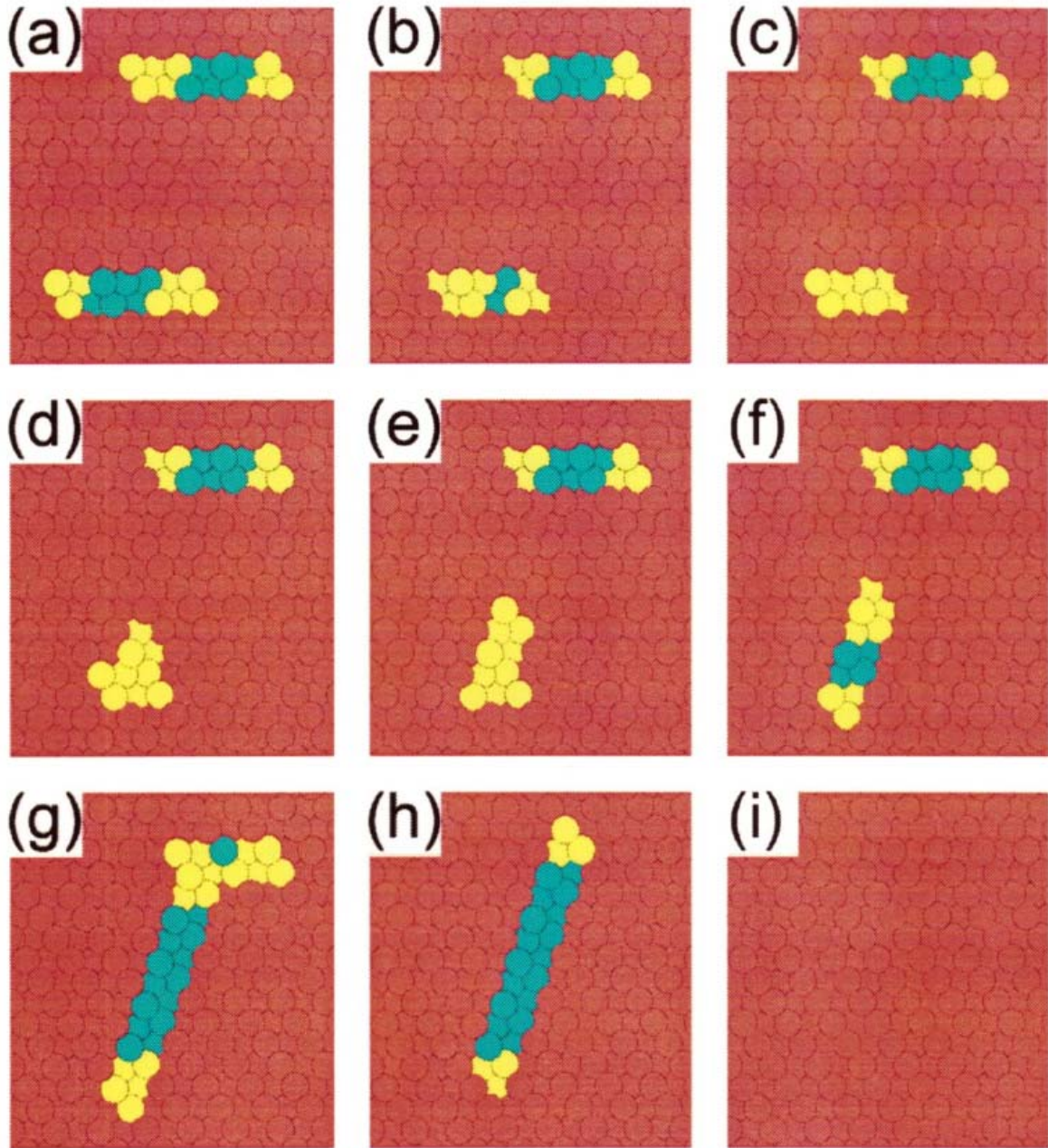
Rao et al. suggested that their E value of 2.35 eV for Ni(2) can be “translated” to an E value of ~1 eV for Cu – quite different from our E value for Cu of ~3 eV. They ascribe the difference to the different methods.

SCREW-DISLOCATION DIPOLES

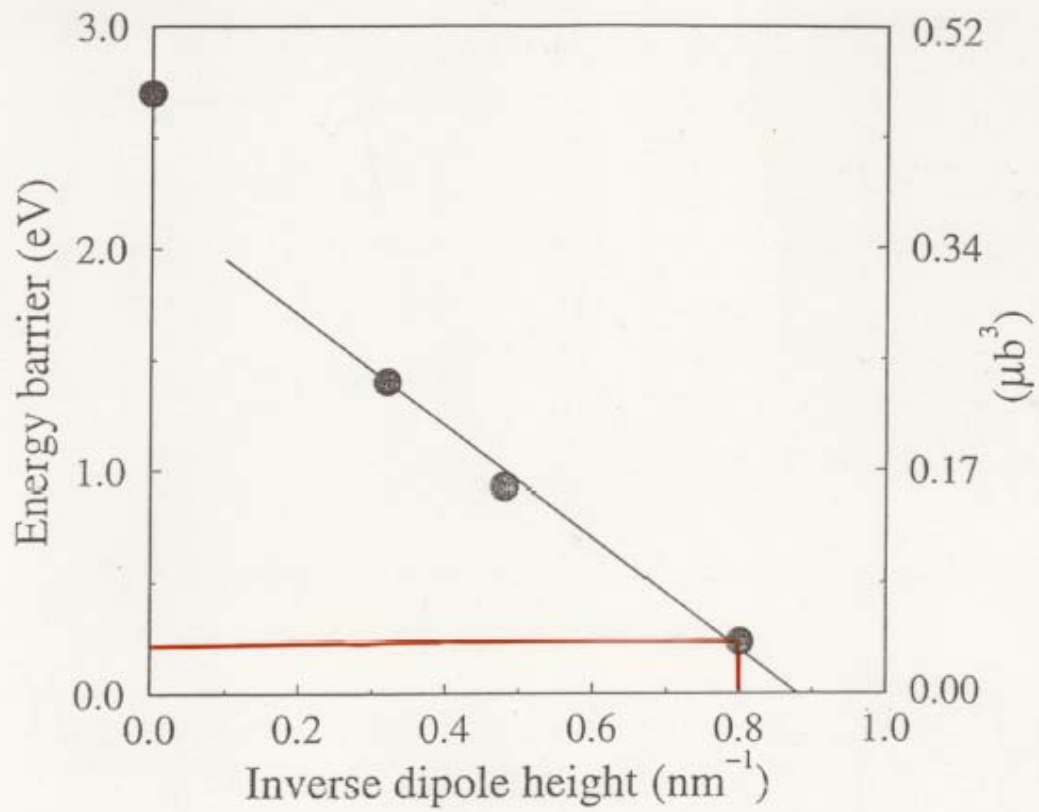
In screw-dislocation dipoles the attraction between the two dislocations reduces the activation energy for cross slip – the activation energy for dipole annihilation by cross slip.

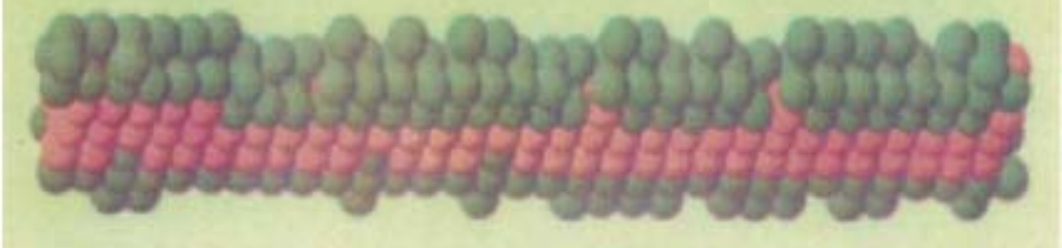
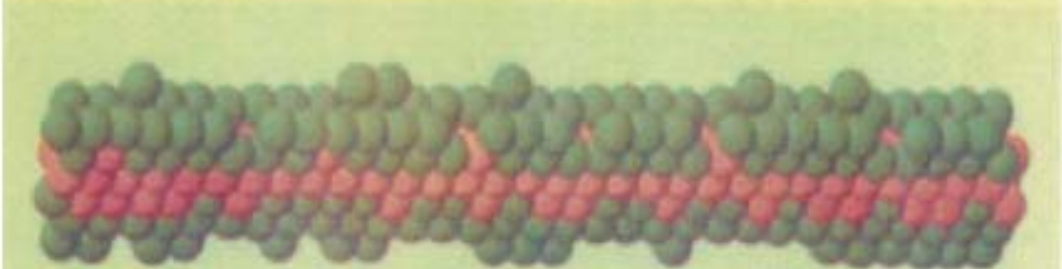
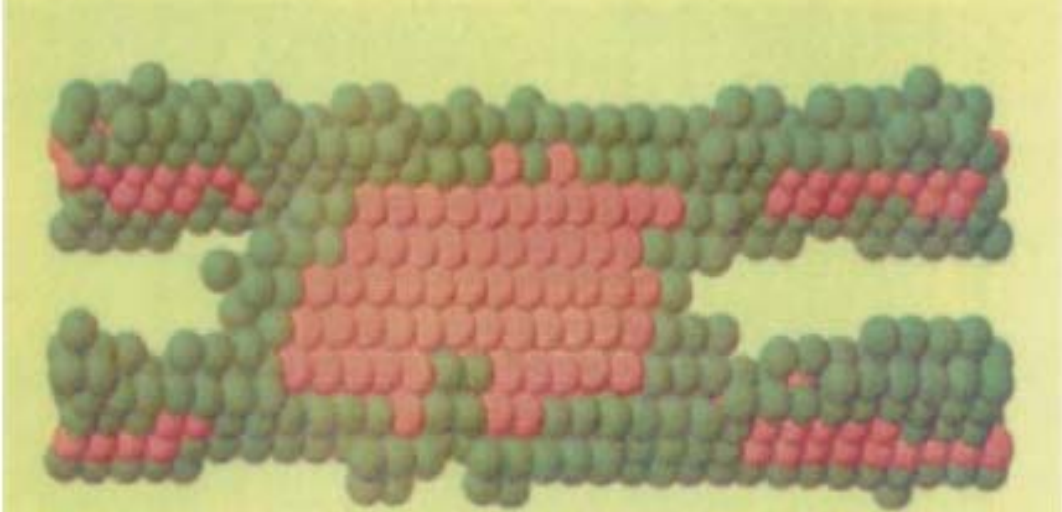
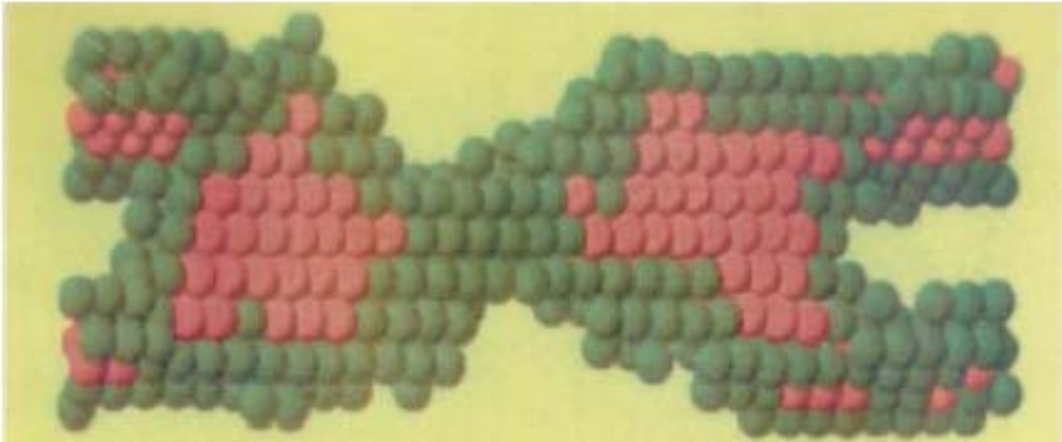
For non-jogged screw-dislocation dipoles there is a simple reduction of the activation energy with an approximately linear relation between activation energy and inverse dipole height.

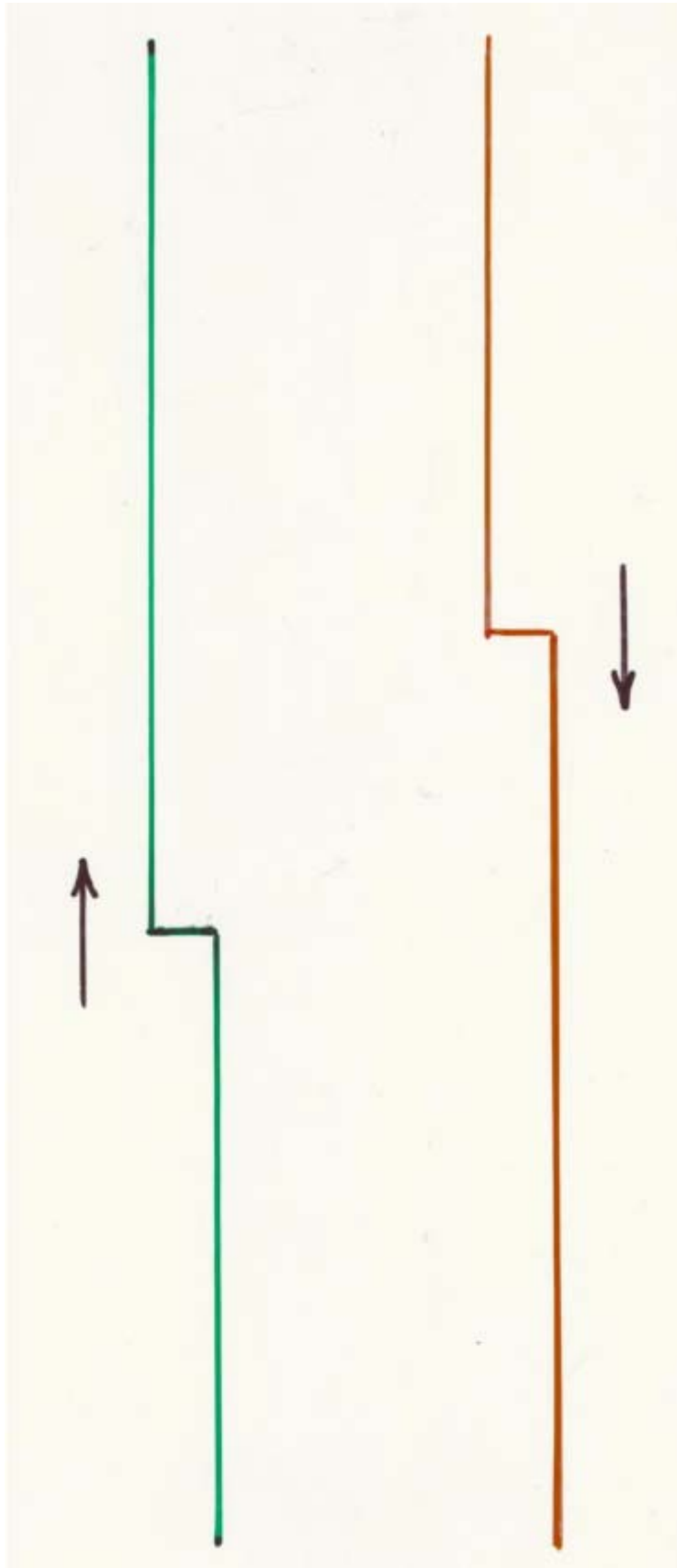
For jogged screw-dislocation dipoles the computer finds an annihilation mechanism with very low activation energy as an alternative to cross slip: “concerted jog migration”. For monotonic deformation we consider concerted jog migration to be an artefact introduced by the periodic-boundary conditions in the computer program. We therefore try to derive the “proper” activation energy for cross slip in jogged screw-dislocation dipoles by enforcing a linear relation with the inverse dipole height.

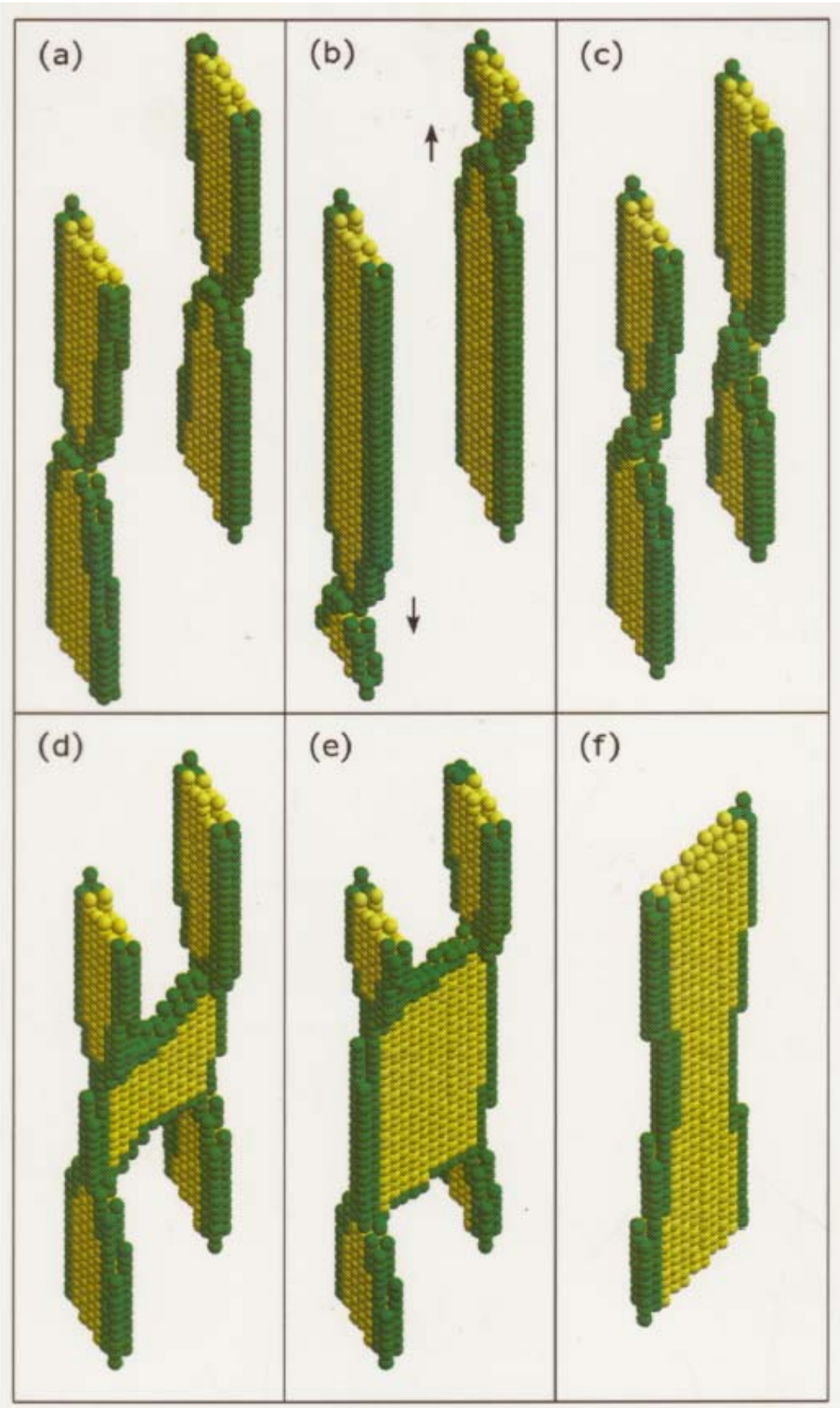


Screw dislocation dipoles

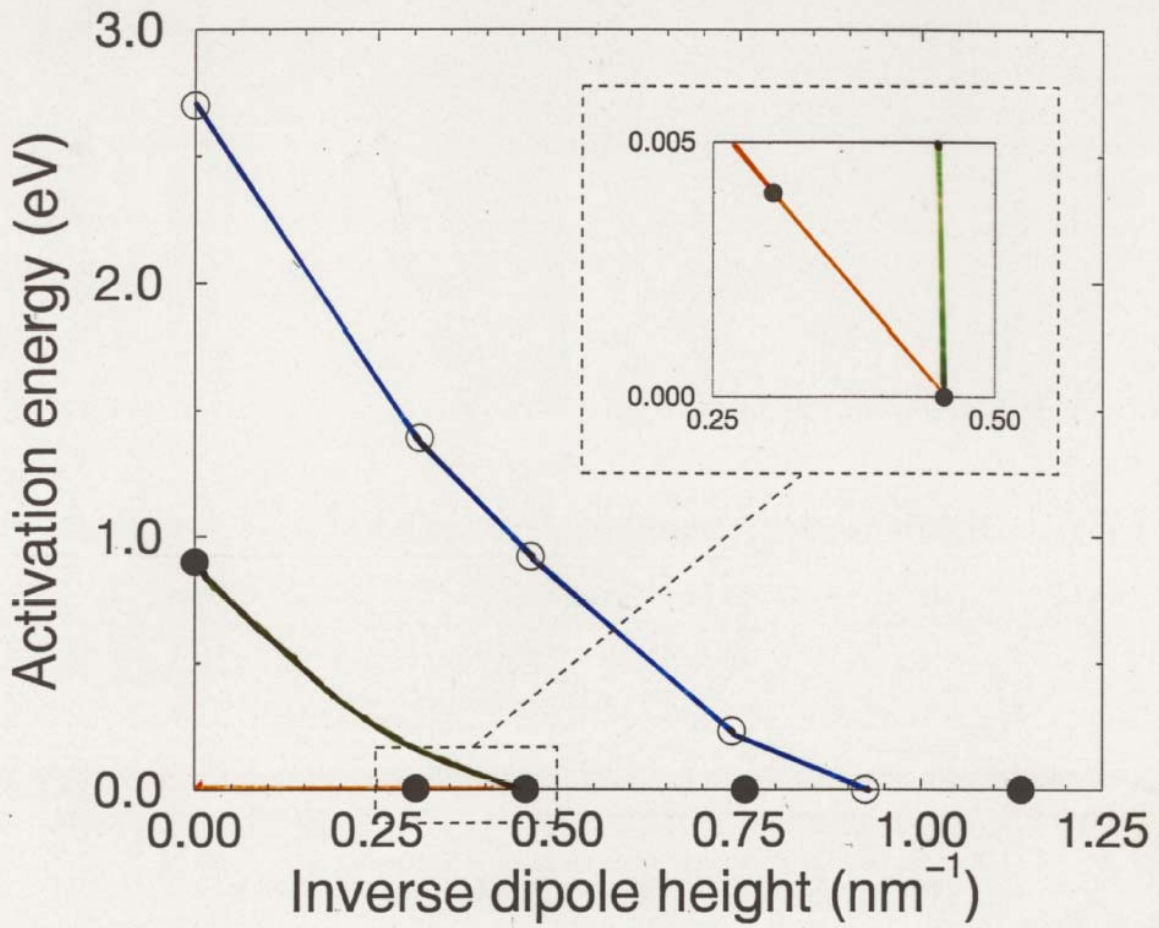








Stress \rightarrow

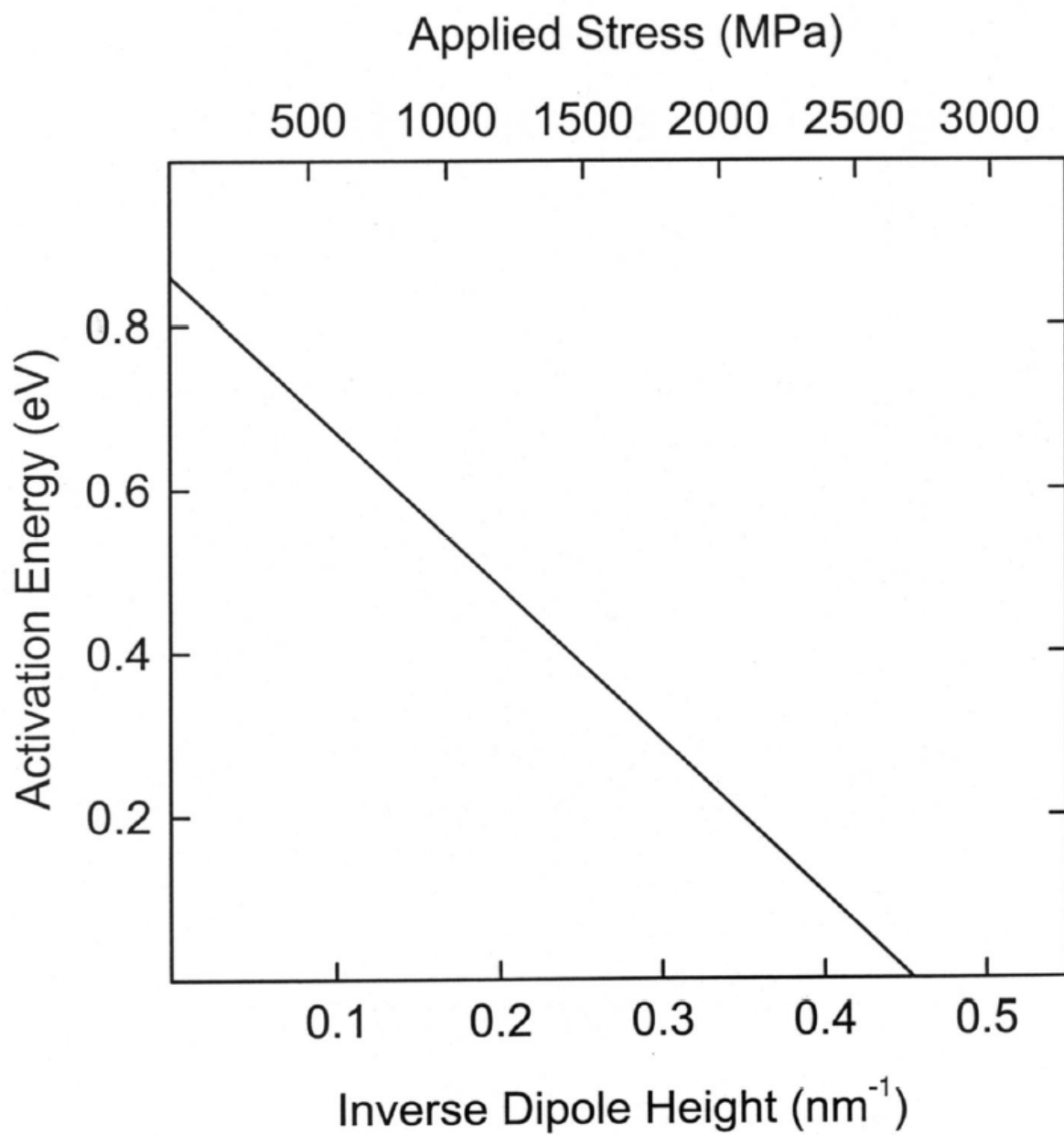


THE ACTIVATION VOLUME FOR CROSS SLIP

The activation volume is defined as $dE/d\tau$, i.e. the stress dependence of the activation energy. From the previous figure we derive a theoretical activation volume of $\sim 10b^3$, b being the Burgers vector.

The value is much smaller than the experimental activation volume for cross slip in copper as derived by Bonneville et al. (1988) which is $\sim 250b^3$

???



TEXTURE

Texture is the statistical representation of the preferred lattice orientations in polycrystals.

Texture is an important material parameter. It is the main cause of mechanical anisotropy.

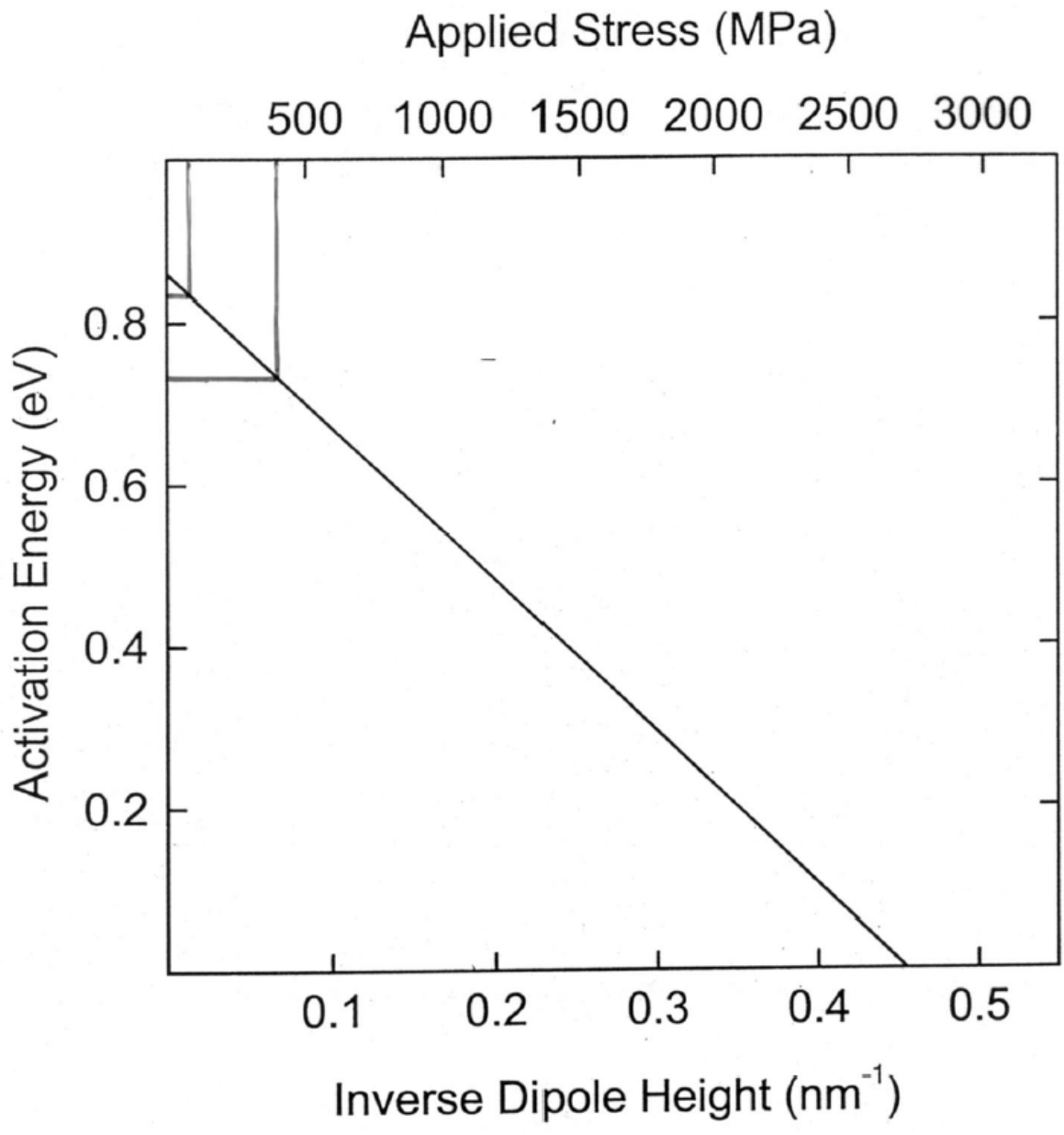
THE FCC ROLLING-TEXTURE TRANSITION

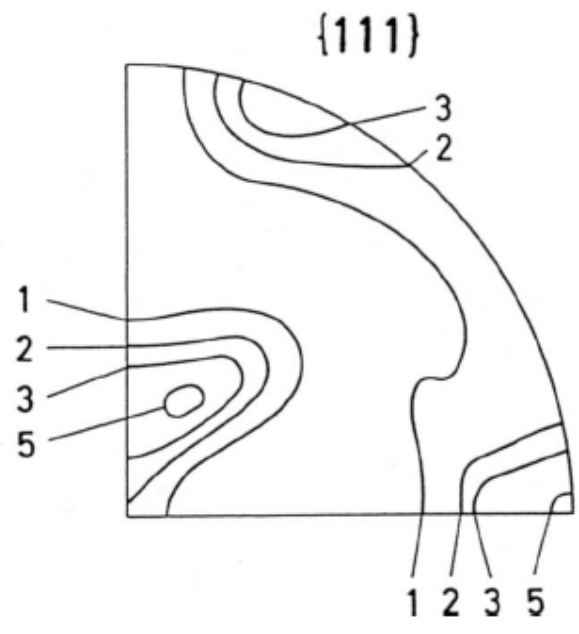
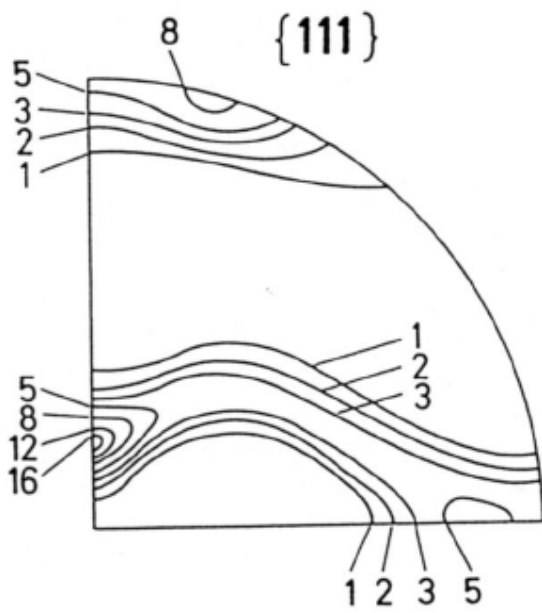
The existence of two types of fcc rolling texture, the copper-type and the brass-type texture, is *the* classical problem in texture research. Already in 1968 Leffers determined the activation energy for the texture transition in Cu-5%Zn by combining the temperature dependence and the strain-rate dependence of the texture after heavy rolling. A recent, revised estimate is **$0.70\text{eV} \pm 0.10\text{eV}$** .

The initial flow stress of Cu-5%Zn is $\sim 80\text{MPa}$, and the flow stress of heavily rolled Cu-5%Zn is $\sim 400\text{MPa}$ which defines a range for the theoretical activation energy for cross slip of **$0.83\text{-}0.73\text{eV}$** where the lower value is much closer to the average for the strain range during which the texture is formed than the higher value.

It is an obvious conclusion that the texture transition is governed by cross slip – in accordance with circumstantial evidence.

Notice that the stacking fault energy of “computer copper”, 31 mJm^{-2} , is close to the actual stacking fault energy of Cu-5%Zn.



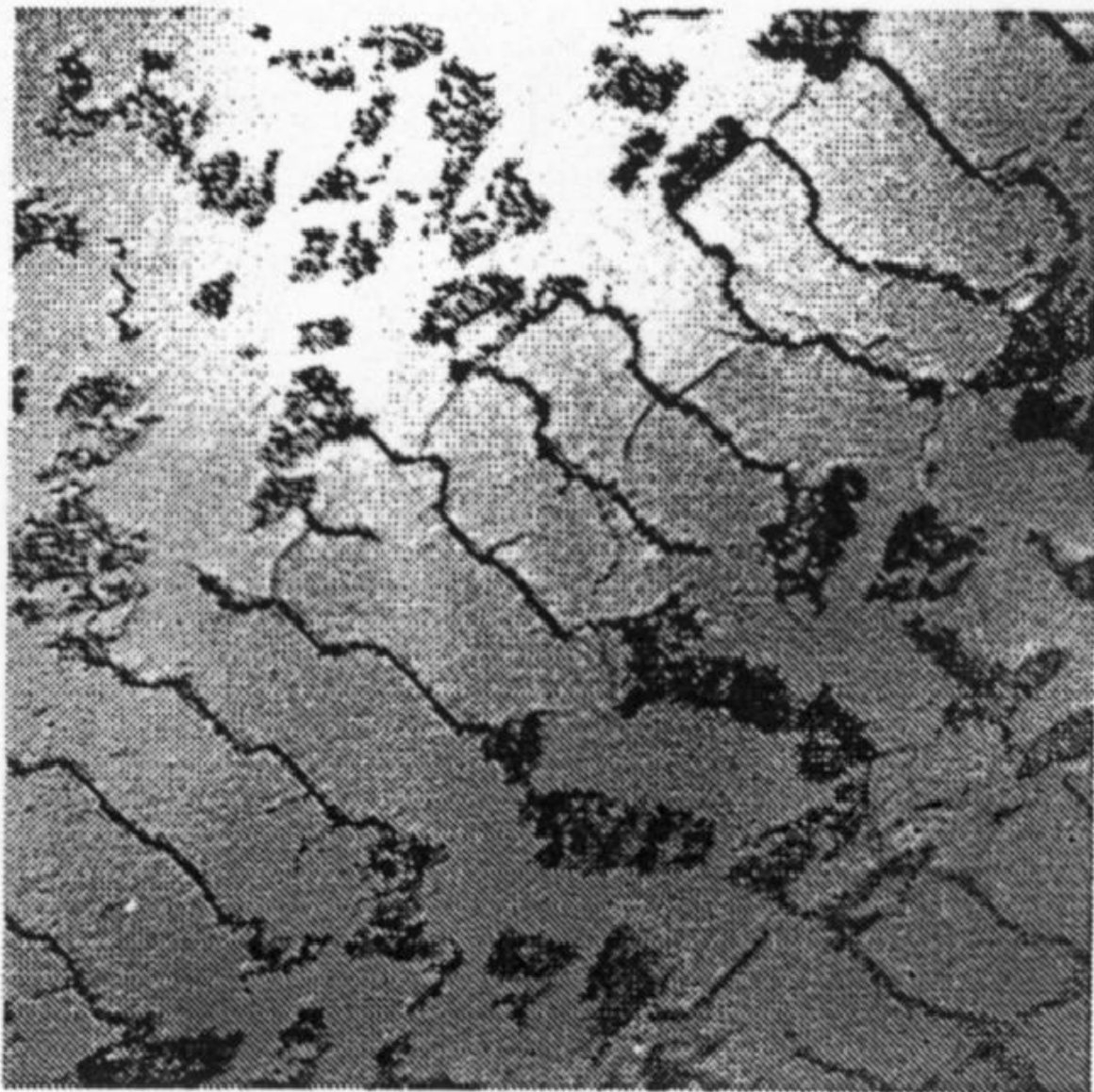
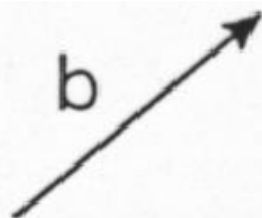


FATIGUE IN FCC METALS

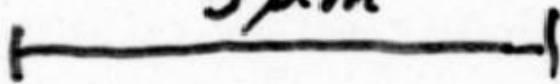
Cyclic hardening to a saturation stress controlled by persistent slip bands (PSBs) turning into cracks is observed in fcc metals down to 4K. PSBs have a characteristic micro- and nano-structure of thin equidistant edge dipole walls resembling a ladder. In 2000 Pedersen suggested a nanotechnology of cyclic saturation, according to which the activation energy for saturation is that for annihilation of unjogged screw dipoles of height h_{UC} .

293K

b



5 μ m



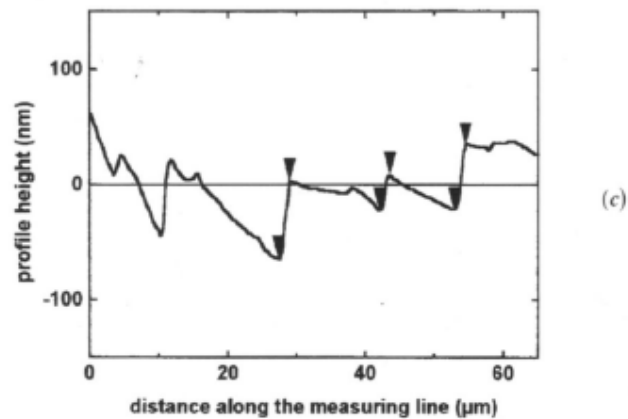
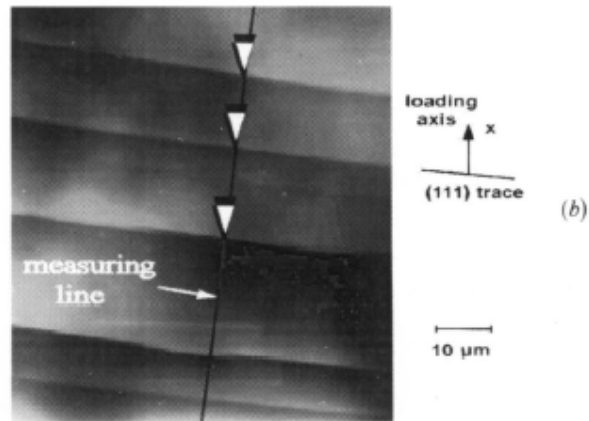
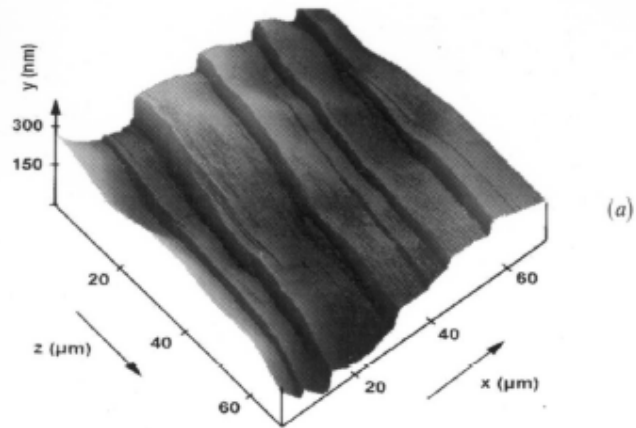


Figure 2. Surface profile developing on the top face of the crystal after one half-cycle tensile plastic strain: (a) three-dimensional representation of an AFM image; (b), two-dimensional view of the selected area in (a) with a measuring line; (c) cross-section of the surface profile along the measuring line shown in (b).

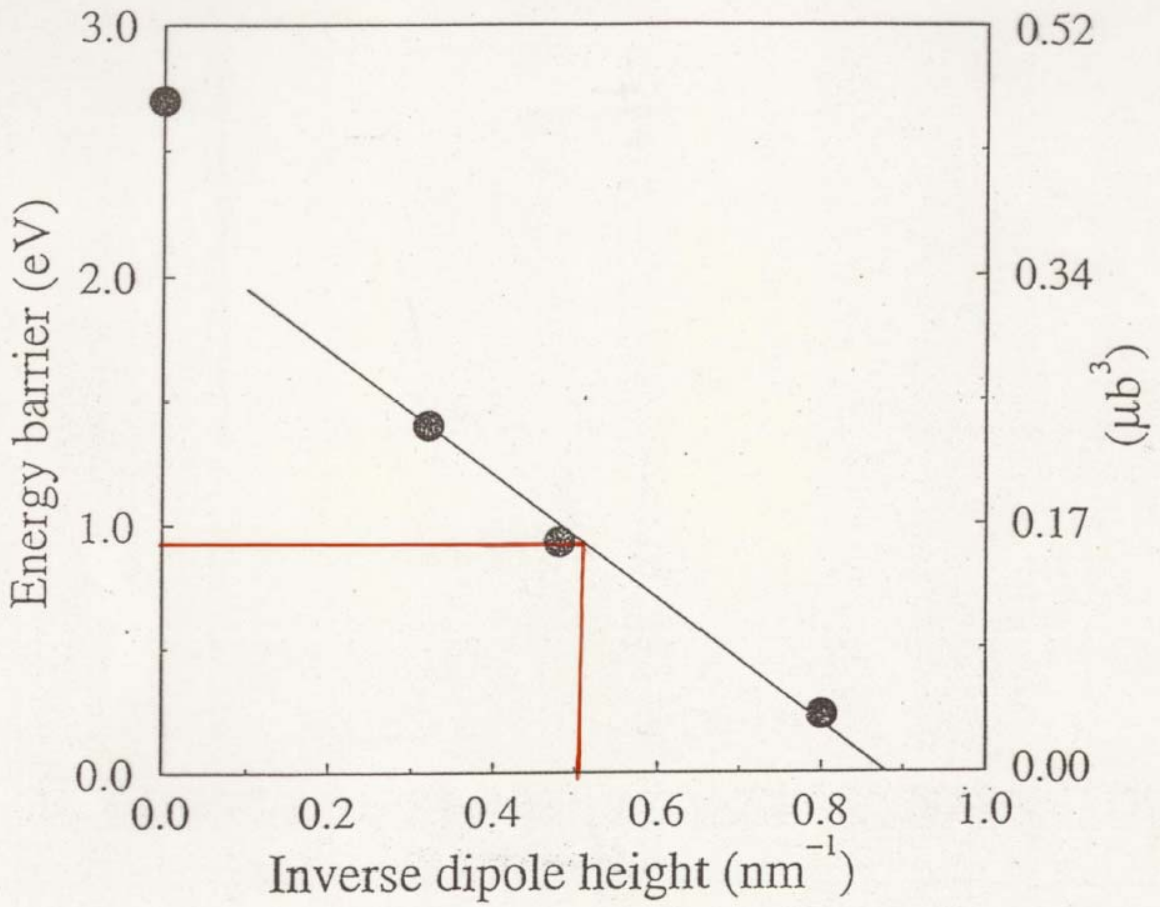
The theory describes cyclic saturation as a thermally activated process of continued nucleation of PSBs deforming heterogeneously by intense plastic shear strain amplitudes e_{PSL} in persistent slip lines (PSLs)

$$e_{\text{PSL}} \leq e_{\text{max}} = \rho_{\text{ave}}(d+w)b+2b/h_{\text{UC}}$$

The microstructural parameters ρ_{ave} and d and w can be measured by electron microscopy and e_{max} by methods like atomic force microscopy. For copper fatigued at room temperature this leads to a dipole height $h_{\text{UC}} = 1.7 \text{ nm}$.

The atomistic simulations combined with the activation energy measured from rate- and temperature change experiments lead to a dipole height of $h_{\text{UC}} = 2.0 \text{ nm}$.

Screw dislocation dipoles





CONCLUSION

We have now reached the stage where we can make direct comparisons between the results of atomic-scale modeling and experimental observations. And there seems to be good agreement.