

Simulation and Real-Time Verification of Video Algorithms on the TI C6400 Using Simulink

Dr. Donald P. Orofino
The MathWorks, Inc
3 Apple Hill Drive
Natick, MA 01760
Phone: 508.647.7568
Fax: 508.647.7201
Email: don@mathworks.com

Abstract

This talk will show how the use of system-level design tools, such as MATLAB and Simulink, can greatly enhance an engineer's ability to quickly and effectively translate product-level and algorithm-level specifications into a working TI DSP-based prototype for the consumer electronics market. Specifically, we will show how to efficiently target typical video processing algorithms, with the high bandwidth and algorithmic efficiency they require, to the TI C6400 platform, and the value of utilizing simulation test-benches to verify real-time behavior of the final system using TI's High-speed RTDX capability. Both the TI C6416 DSK and the XDS-560 Emulator are demonstrated.

Presentation Structure:

Strength of system-level design (SLD) approach for consumer electronics
Problems in code generation and verification that SLD software can help solve
Introduction to the application of video processing, theory of algorithm design
- algorithm will either be "motion and edge detection" or "iris scan recognition", depending on how lucky we feel for the live demos ;-)

Implementation Details

- Live use of Simulink system-level design software
Automatic code generation, hardware task performance
- Live demonstration of C6400 DSK code generation using MathWorks
- Real-Time Workshop, optimization and real-time execution Design verification and real-time testbenching
- Live demonstration of real-time video data transfer and test-bench verification using RTDX and MATLAB Link for TI DSP

Conclusion

- Vision for future support of video and TI processor family

Report Documentation Page

Form Approved
OMB No. 0704-0188

Public reporting burden for the collection of information is estimated to average 1 hour per response, including the time for reviewing instructions, searching existing data sources, gathering and maintaining the data needed, and completing and reviewing the collection of information. Send comments regarding this burden estimate or any other aspect of this collection of information, including suggestions for reducing this burden, to Washington Headquarters Services, Directorate for Information Operations and Reports, 1215 Jefferson Davis Highway, Suite 1204, Arlington VA 22202-4302. Respondents should be aware that notwithstanding any other provision of law, no person shall be subject to a penalty for failing to comply with a collection of information if it does not display a currently valid OMB control number.

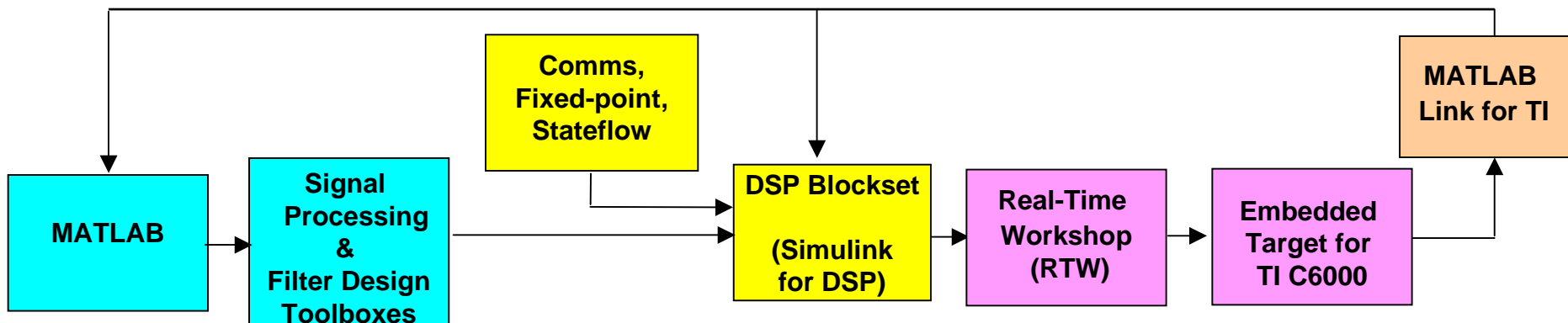
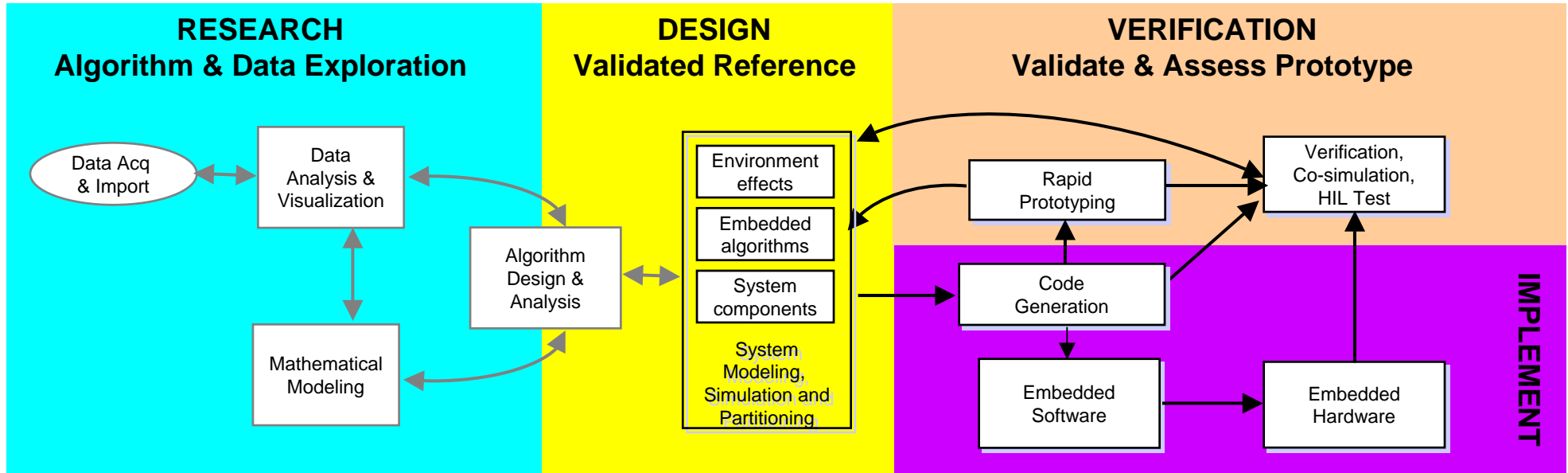
1. REPORT DATE 20 AUG 2004		2. REPORT TYPE N/A		3. DATES COVERED -	
4. TITLE AND SUBTITLE Simulation and Real-Time Verification of Video Algorithms on the TI C6400 Using Simulink				5a. CONTRACT NUMBER	
				5b. GRANT NUMBER	
				5c. PROGRAM ELEMENT NUMBER	
6. AUTHOR(S)				5d. PROJECT NUMBER	
				5e. TASK NUMBER	
				5f. WORK UNIT NUMBER	
7. PERFORMING ORGANIZATION NAME(S) AND ADDRESS(ES) The MathWorks, Inc 3 Apple Hill Drive Natick, MA 01760				8. PERFORMING ORGANIZATION REPORT NUMBER	
9. SPONSORING/MONITORING AGENCY NAME(S) AND ADDRESS(ES)				10. SPONSOR/MONITOR'S ACRONYM(S)	
				11. SPONSOR/MONITOR'S REPORT NUMBER(S)	
12. DISTRIBUTION/AVAILABILITY STATEMENT Approved for public release, distribution unlimited					
13. SUPPLEMENTARY NOTES See also ADM001694, HPEC-6-Vol 1 ESC-TR-2003-081; High Performance Embedded Computing (HPEC) Workshop (7th)., The original document contains color images.					
14. ABSTRACT					
15. SUBJECT TERMS					
16. SECURITY CLASSIFICATION OF:			17. LIMITATION OF ABSTRACT	18. NUMBER OF PAGES	19a. NAME OF RESPONSIBLE PERSON
a. REPORT unclassified	b. ABSTRACT unclassified	c. THIS PAGE unclassified			

Application: Surveillance Data-Stream Compression

- **Need:** Continuous monitoring of scene with video camera
 - Security (ATM booth, parking lot), Intelligent Highways, Bio/Pharma, etc.
 - **Problem:** Generates large volumes of data to record, archive, and review
 - Preferable to reduce data stream at the source (embedded compression)
 - **Solution:** Shrink data storage requirements
 - Reduce **size of each** video frame to record, and/or
 - Reduce **total number** of video frames to record
 - **Simple Idea:** **Motion** within camera's field of view **triggers storage** of "interesting" frames
- Video Application:** Identify and record only these "interesting" video frames



Embedded System Strategy: Model-Based Design

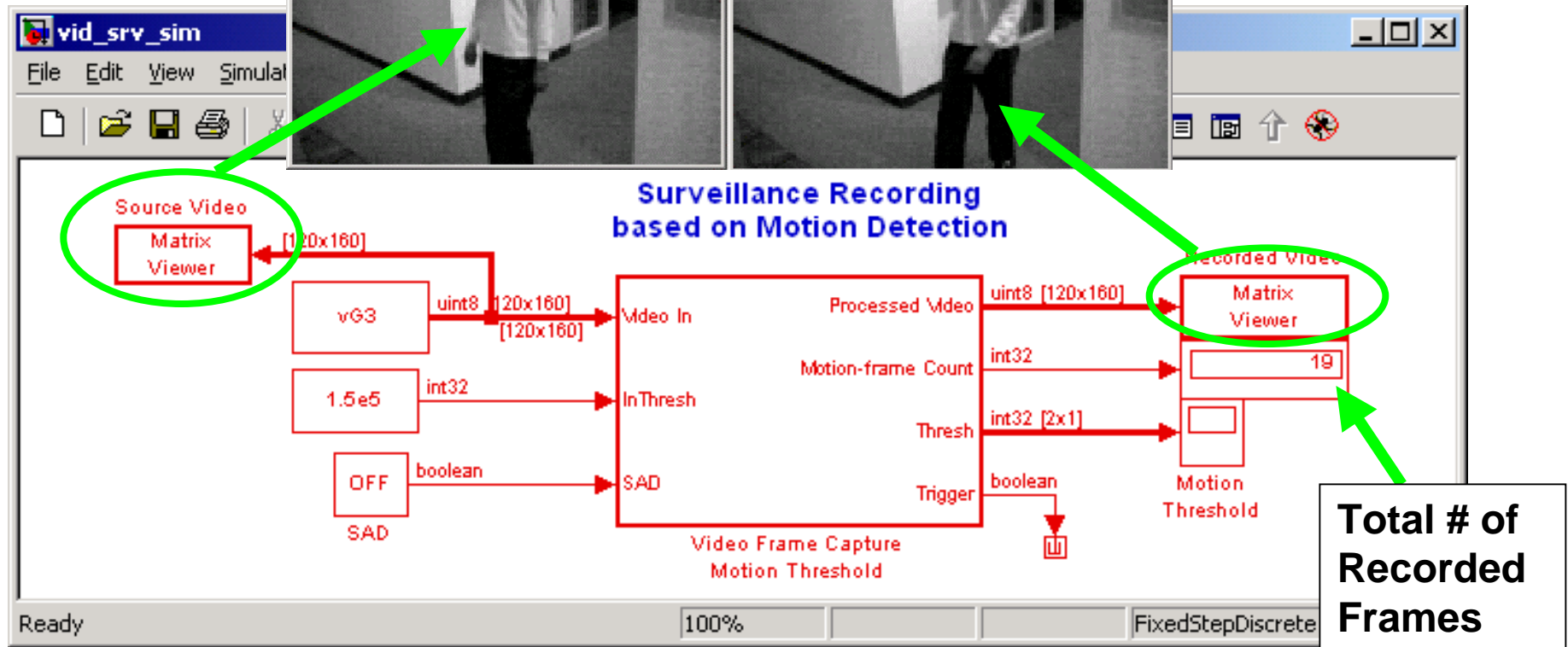


Surveillance Compression

Source Frames
High rate: 30 fps



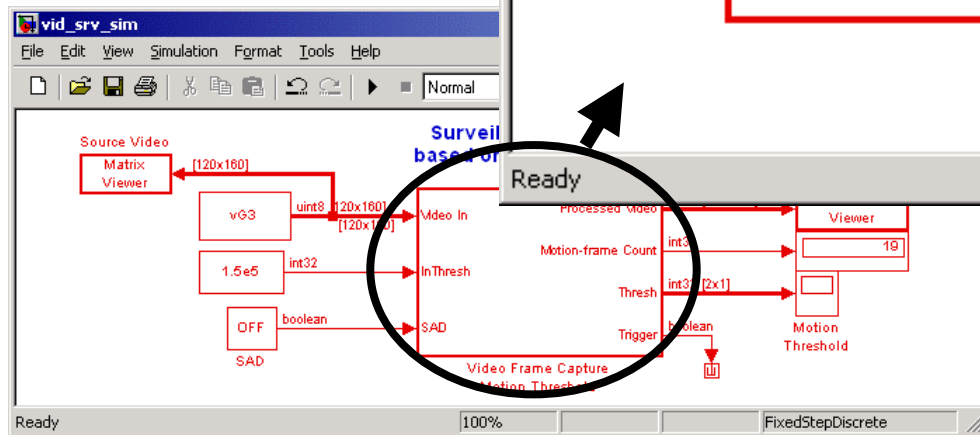
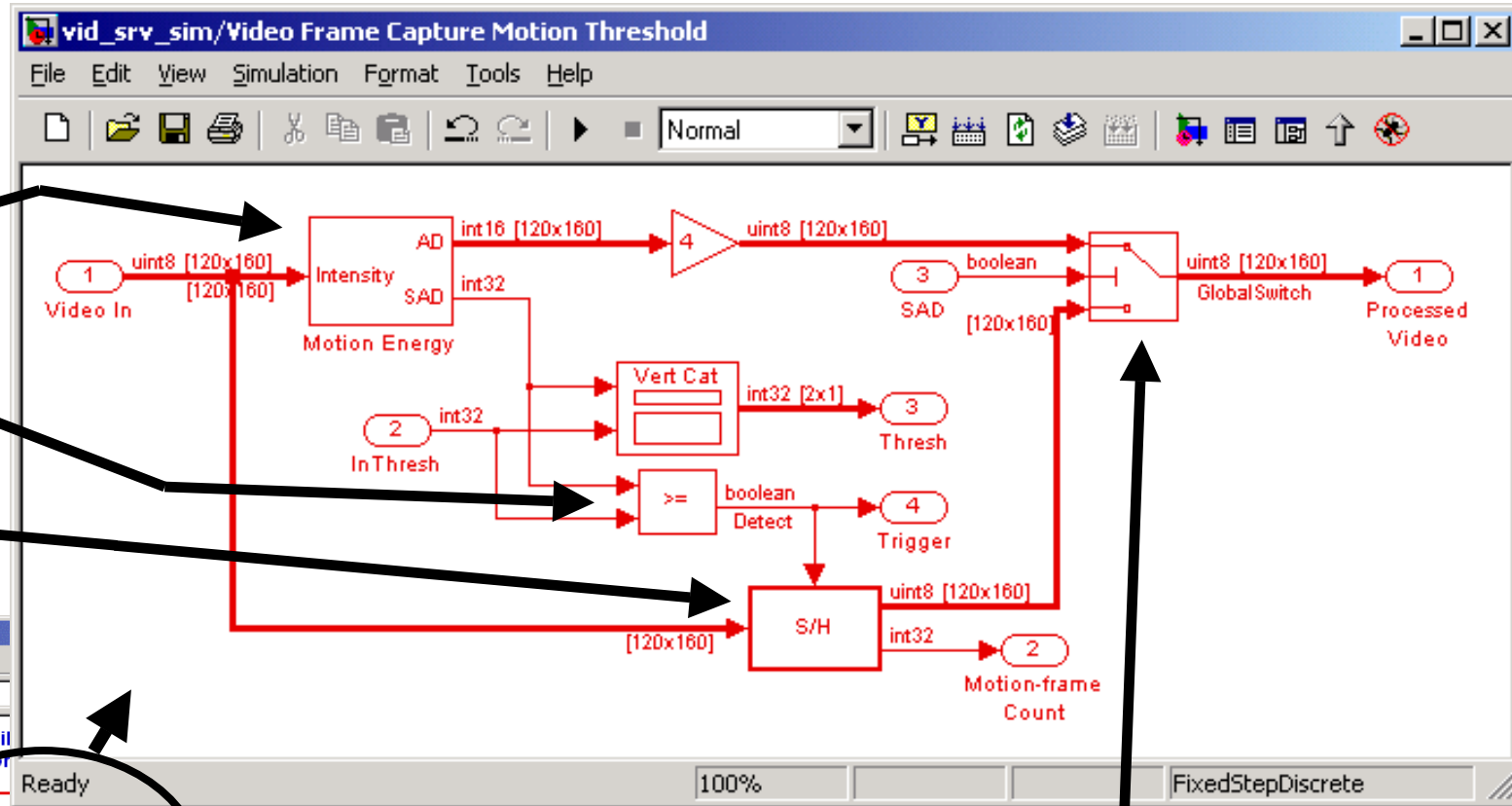
Recorded Frames
Aperiodic rate
(\ll 30 fps)



Subsystem Hierarchy

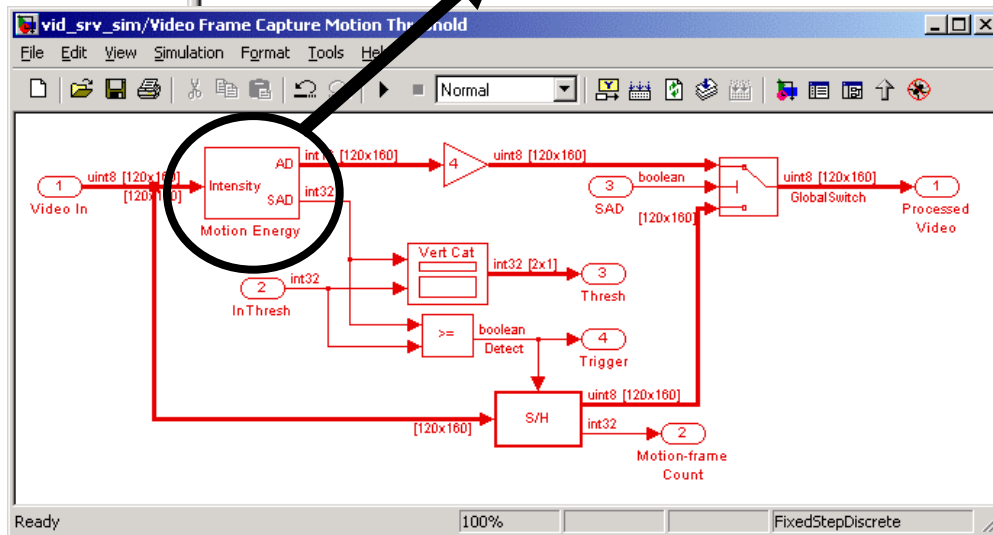
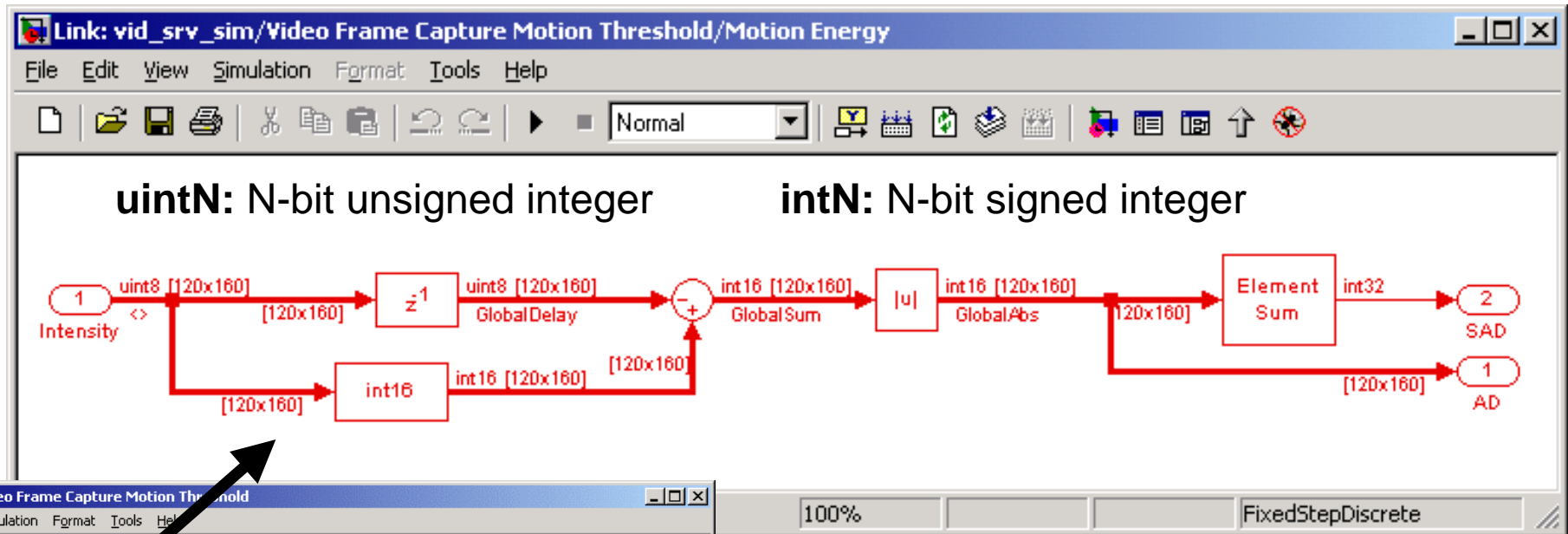
Model Overview

- Estimate motion
- Compare threshold
- Record frames & update count



Allows switching between **compressed** and **absolute differences** video streams on-the-fly, for enhanced testing

SAD Algorithm for Motion Estimation




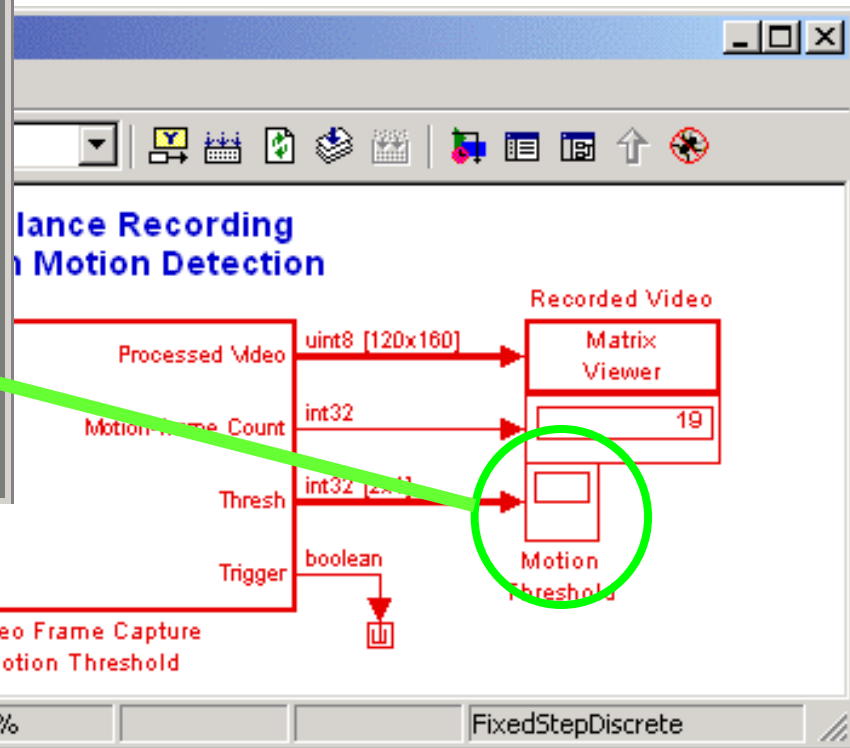
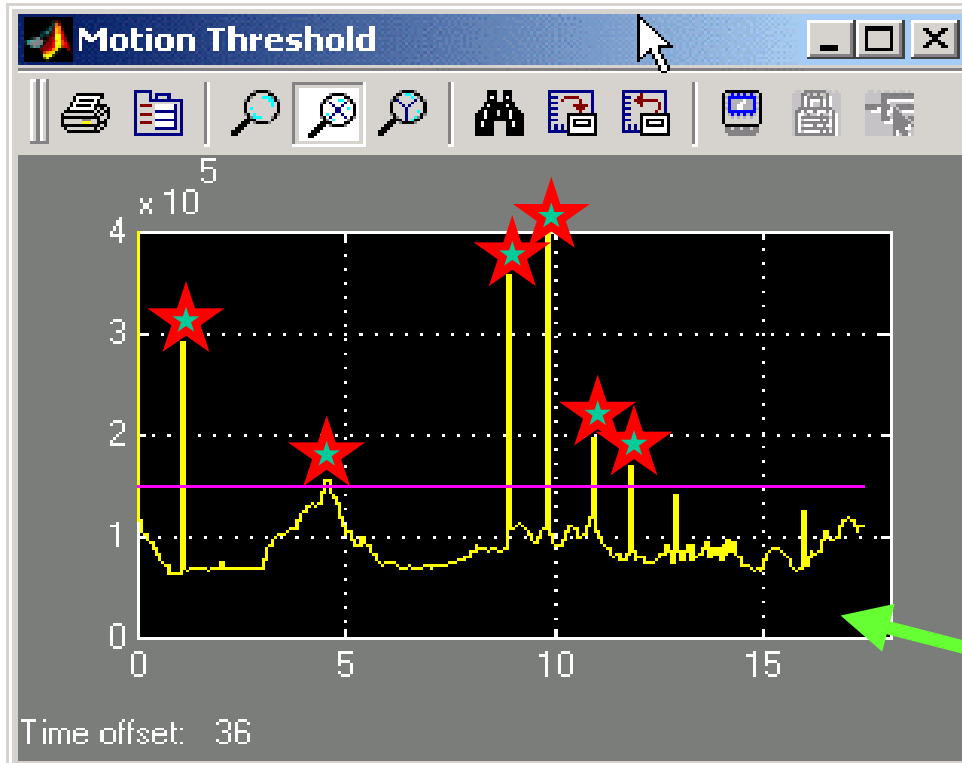
Sum of Absolute Differences

- Very simple method of inter-frame video motion detection
- Has efficient fixed-point (integer) implementation in hardware

Motion Detection via Thresholding

Motion levels

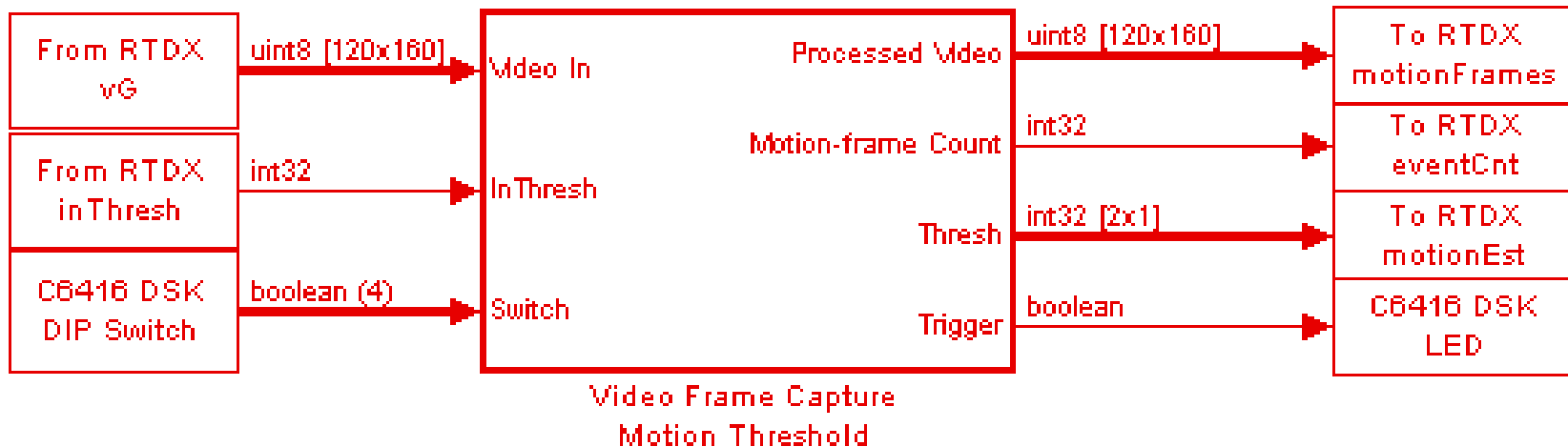
-  Video Motion Estimate
-  Detection Threshold
-  Captured Video Frames



Steps to Target the TI C6416 DSK

1. Utilize I/O blocks to prepare for on-target system verification

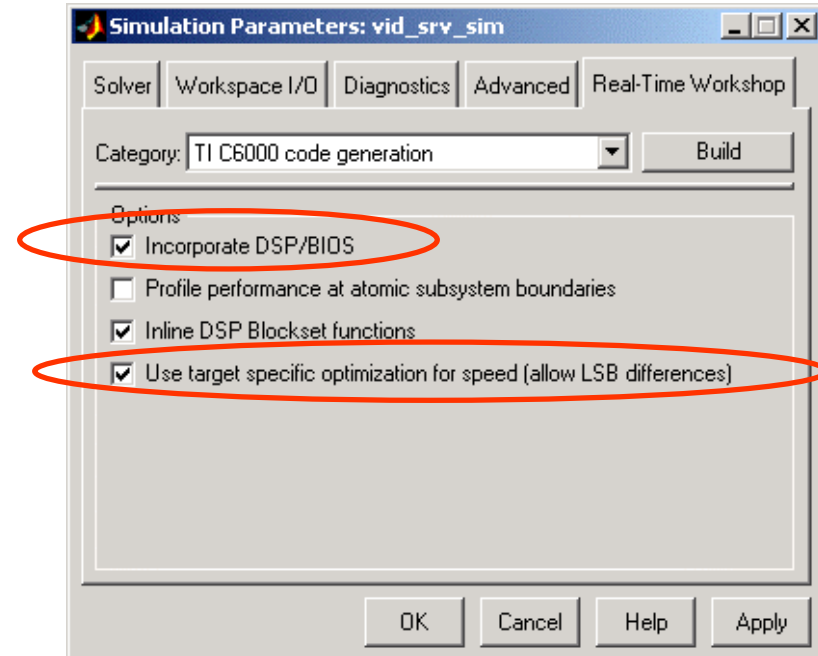
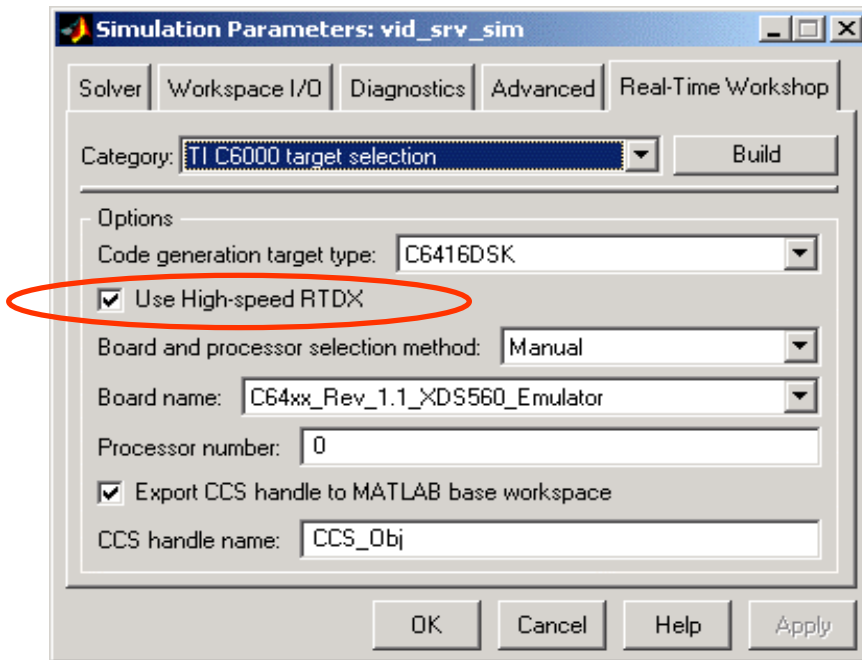
- Use board support library components, such as RTDX Input/Output, codecs, LEDs, switches, etc



RTDX: TI protocol for Real-Time Data eXchange
 High-Speed RTDX offers **~2 MB/sec** bandwidth

Steps to Target the TI C6416 DSP

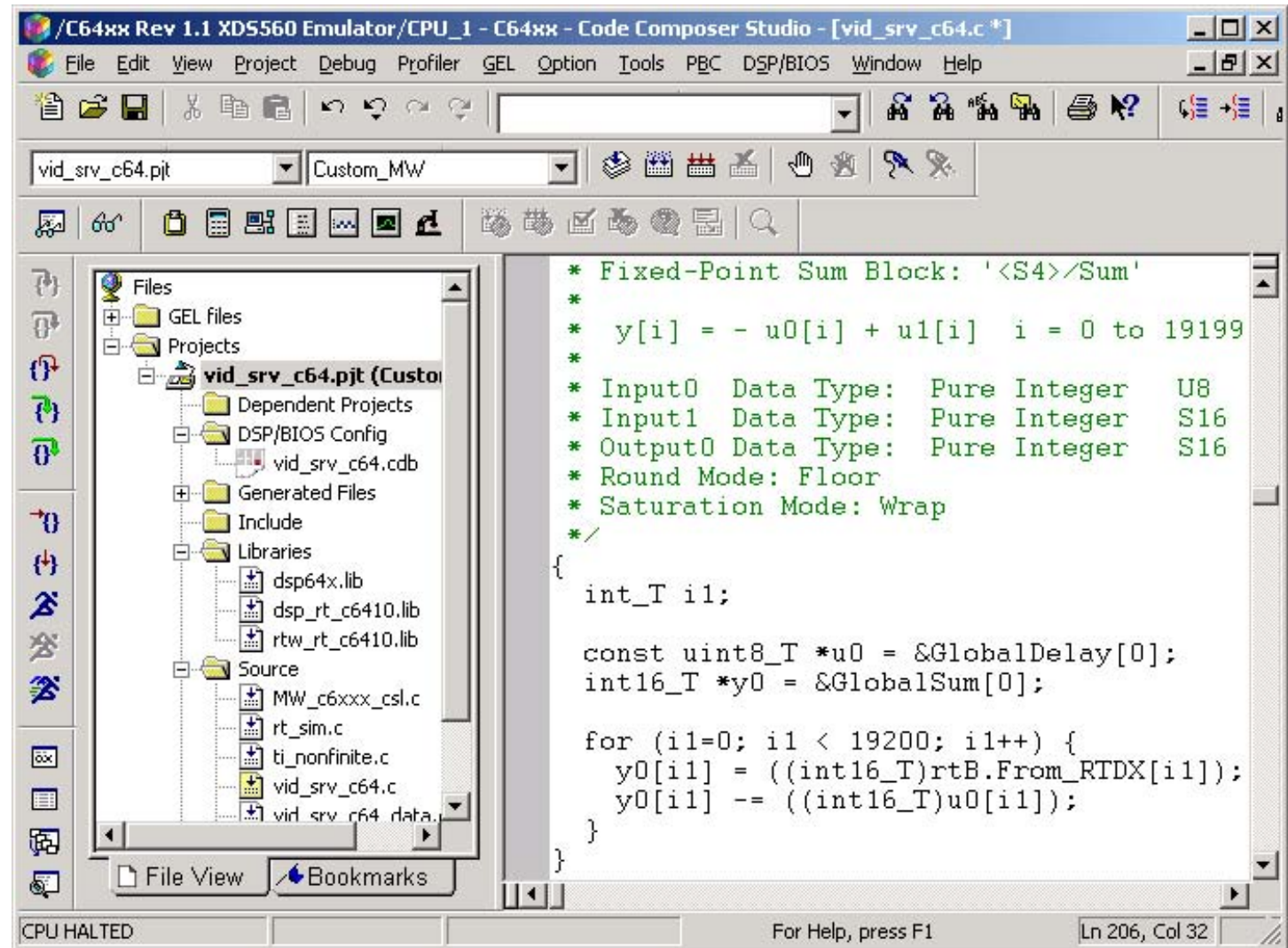
2. Select target options (DSP/BIOS, compiler settings, etc)



Steps to Target the TI C6416 DSP

3. Build process

- Auto-generate ANSI C and ASM code
- Integration of RTOS and scheduler
- Create full CCS project in IDE
- Invoke compiler, linker, and download code
- Run target



```

* Fixed-Point Sum Block: '<S4>/Sum'
*
* y[i] = - u0[i] + u1[i]  i = 0 to 19199
*
* Input0  Data Type:  Pure Integer   U8
* Input1  Data Type:  Pure Integer   S16
* Output0 Data Type:  Pure Integer   S16
* Round Mode: Floor
* Saturation Mode: Wrap
*/
{
  int_T i1;

  const uint8_T *u0 = &GlobalDelay[0];
  int16_T *y0 = &GlobalSum[0];

  for (i1=0; i1 < 19200; i1++) {
    y0[i1] = ((int16_T)rtB.From_RTDX[i1]);
    y0[i1] -= ((int16_T)u0[i1]);
  }
}
    
```

Steps to Target the TI C6416 DSP

4. Automatic profiling of program executing on DSP

- System profiling
 - Includes entire DSP application code

- Subsystem profiling

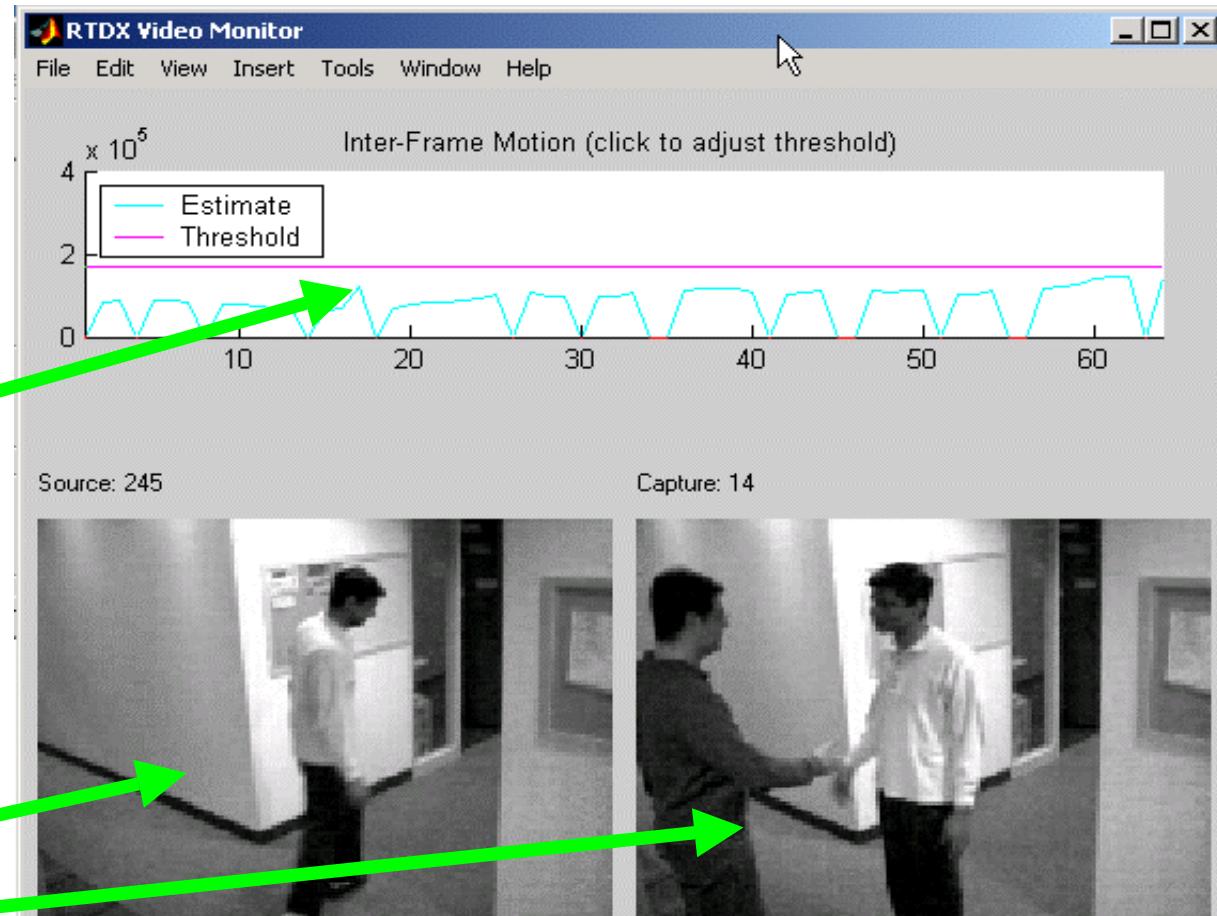
The screenshot shows a 'Profile Report' window with two entries. The first entry is for 'System profiling' with a 'Max percent of interrupt interval' of 20%. The second entry is for 'Subsystem profiling' with a 'Max percent of interrupt interval' of 4.3%. Both percentage values are circled in red.

System name	Max percent of interrupt interval
vid_srv_c64	20%
vid_srv_c64/Video Frame Capture Motion Threshold	4.3%

Design Verification: Real-time Visualization

MATLAB Application

- **Host-side visualization**
- **MATLAB M-file GUI**
 - ◆ Using **Link for TI CCS** and standard Handle Graphics functionality
- **Motion Estimates**
 - ◆ Log and plot estimates over time (scrolling data)
 - ◆ Adjust detection threshold (click mouse on graph)
- **Monitor video capture**
 - ◆ Input video frames
 - ◆ Captured frames



Design Verification

Automating embedded software verification cycle

- **MATLAB Host Application uses *Link for TI CCS IDE* for communication with Code Composer Studio**
 - ◆ Extends MATLAB language to interact with CCS
 - ◆ Provides project load/run/stop management, debug points, data manipulation, HIL, and co-simulation support
 - ◆ Supports real-time data exchange (RTDX)
- **Use Link to visualize & verify correct behavior of code running on any TI DSP (C2000, C5000, C6000, OMAP, TMS470)**
- **Equips MATLAB with interactive DSP verification and test-bench validation capabilities**

Example CCS Link M-file

```
% Connect to CCS & DSP:
CCS_Obj = ccsdsp;
r = CCS_Obj.rtdx;

% Configure RTDX channels
r.open('vidIn', 'w', ...
      'vidOut', 'r', ...
      'motionEst','r');
CCS_Obj.run; % Run target app
r.enable;    % Enable RTDX chans

% Write data to DSP (real-time)
r.writemsg('vidIn', nextFrame);

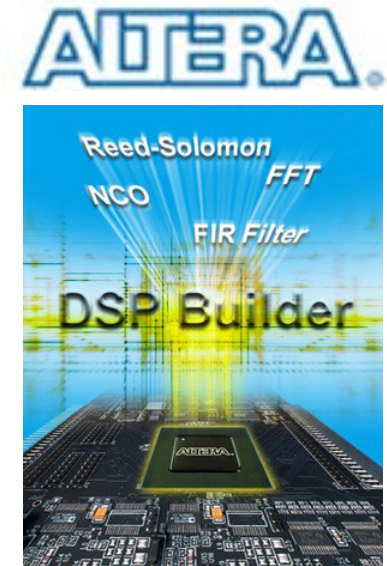
% Read data from DSP
outFrame = r.readmsg('vidOut',
                    'uint8',[120 160]);
```

Summary: Simulink for Video Processing

- **Graphical block-diagram design environment**
 - Time-oriented, stream-based signal processing
 - Matrix-based, multi-rate, multi-tasking, frame-aware
 - Floating-point, fixed-point, and integer data types
 - Automatic code generation via Real-Time Workshop
 - Interoperability with MATLAB

Next Steps: FPGA Implementation

- Third-Party FPGA Design Products
 - Xilinx System Generator
 - Altera DSP Builder
- MathWorks HDL Products
 - Link for ModelSim™ (New: Oct'03)
 - HDL Filter Designer (Beta: Oct'03)



Next Steps: High Performance Video

- Fixed point enhancements to Simulink and MATLAB
- Image Acquisition Toolbox
- Video processing components (Beta: Jan'04)

Next Steps: For More Information

- **Upcoming Simulink video processing webinar**
 - www.mathworks.com/webinar_tid
- **The MathWorks products**
 - www.mathworks.com/products
- **Additional Simulink video processing examples**
 - www.matlabcentral.com

Simulation and Real-time Verification of Video Algorithms on the TI C6400 DSP

Synopsis of Poster C.10

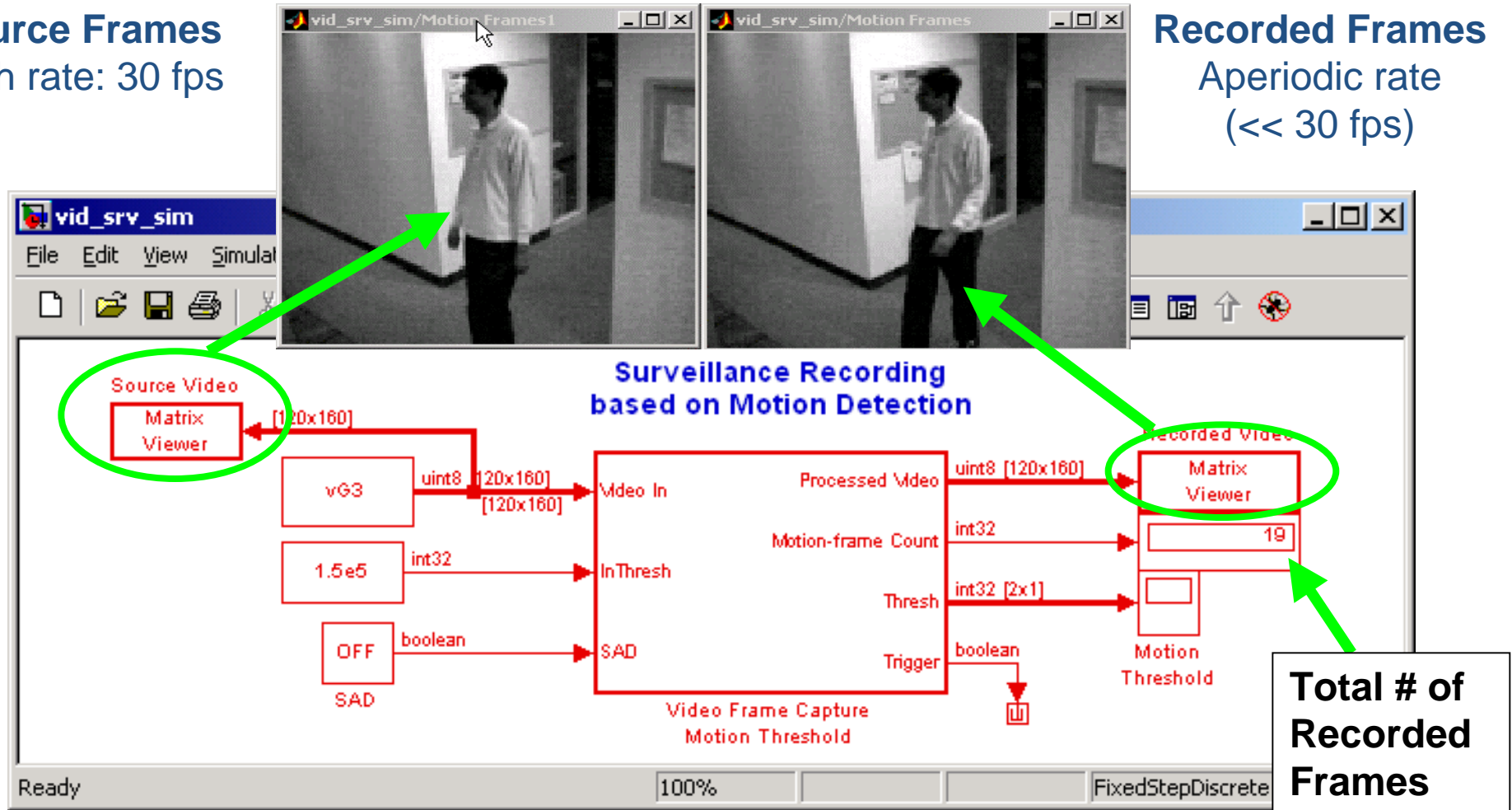
Poster C.10 - Thu 25 Sep 2003

Don Orofino
Manager, DSP Development
The MathWorks, Inc.

Surveillance Compression

Source Frames
High rate: 30 fps

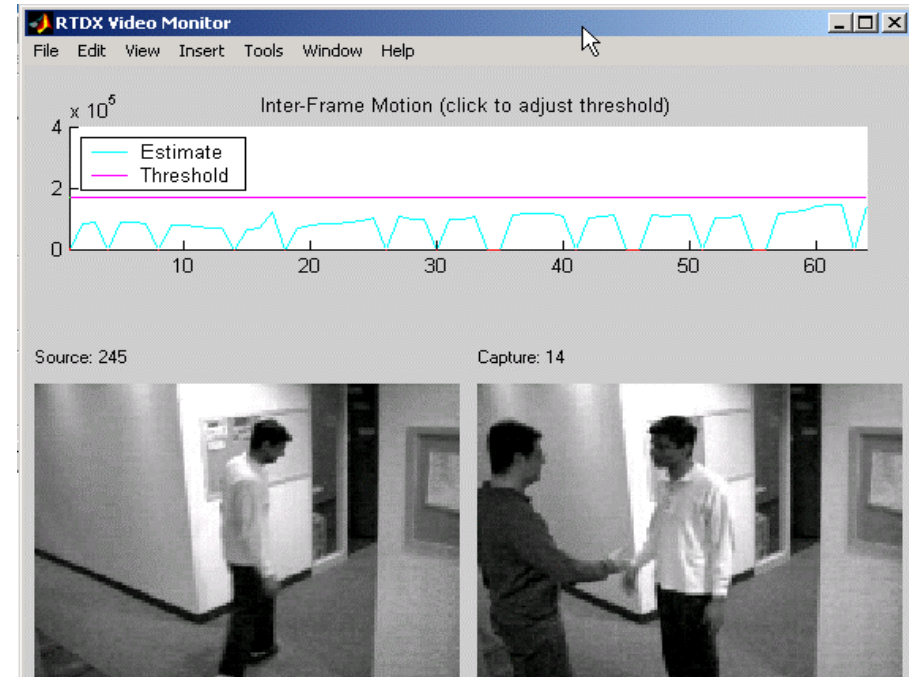
Recorded Frames
Aperiodic rate
(\ll 30 fps)



Video system demonstration

- **DSP running video application**
 - “On-chip Rapid Prototyping”
 - **TI C6416 DSK:** High-performance fixed-point DSP targeted by Simulink

- **MATLAB Host-side GUI**
 - Link for TI Code Composer Studio utilized for quick programming
 - Bi-directional data transfer for full-speed testing/visualization



Steps to Target the TI C6416 DSP

4. Automatic profiling of program executing on DSP

- System profiling
 - Includes entire DSP application code

- Subsystem profiling


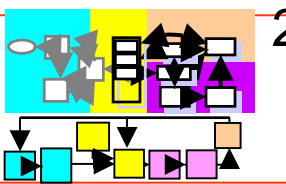

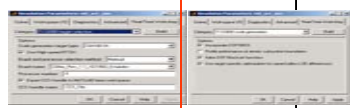
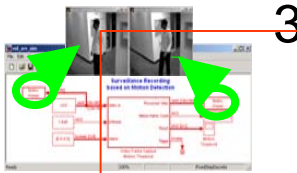
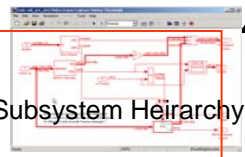


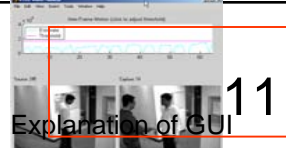

System name	Max percent of interrupt interval
vid_srv_c64	20%
vid_srv_c64/Video Frame Capture Motion Threshold	4.3%

Simulation and Real-time Verification of Video Algorithms on the TI C6400 DSP

Poster C.10 - Thu 25 Sep 2003

Don Orofino
Manager, DSP Development
The MathWorks, Inc.

Poster Panel Layout

<p>1</p>  <p>Example Video App: Surveillance Recording</p>	<p>2</p> 	<p>7</p> 	<p>8</p> <p>Target Options</p> 
<p>3</p> 	<p>4</p> <p>Subsystem Hierarchy</p> 	<p>9</p> <p>Build Process</p> <p>HTML Code Snippet</p>	<p>10</p> <p>Profiling result</p>
<p>5</p> <p>SAD Algorithm</p> 	<p>6</p> 	<p>11</p> <p>Explanation of GUI</p> 	<p>12</p> <p>M-code snippet Link benefits</p>
<p>13</p> <p>SL for video</p>	<p>14</p> <p>FPGA Products</p> 	<p>15</p> <p>Future: High performance video solutions</p>	<p>16</p> <p>For More Info...</p>