

***Cell Sheet Engineering with
Intelligent Polymer-Grafted
Surfaces***

Masayuki Yamato

***Tokyo Women' Med. Univ.
CREST, JST, JAPAN***

Report Documentation Page

Form Approved
OMB No. 0704-0188

Public reporting burden for the collection of information is estimated to average 1 hour per response, including the time for reviewing instructions, searching existing data sources, gathering and maintaining the data needed, and completing and reviewing the collection of information. Send comments regarding this burden estimate or any other aspect of this collection of information, including suggestions for reducing this burden, to Washington Headquarters Services, Directorate for Information Operations and Reports, 1215 Jefferson Davis Highway, Suite 1204, Arlington VA 22202-4302. Respondents should be aware that notwithstanding any other provision of law, no person shall be subject to a penalty for failing to comply with a collection of information if it does not display a currently valid OMB control number.

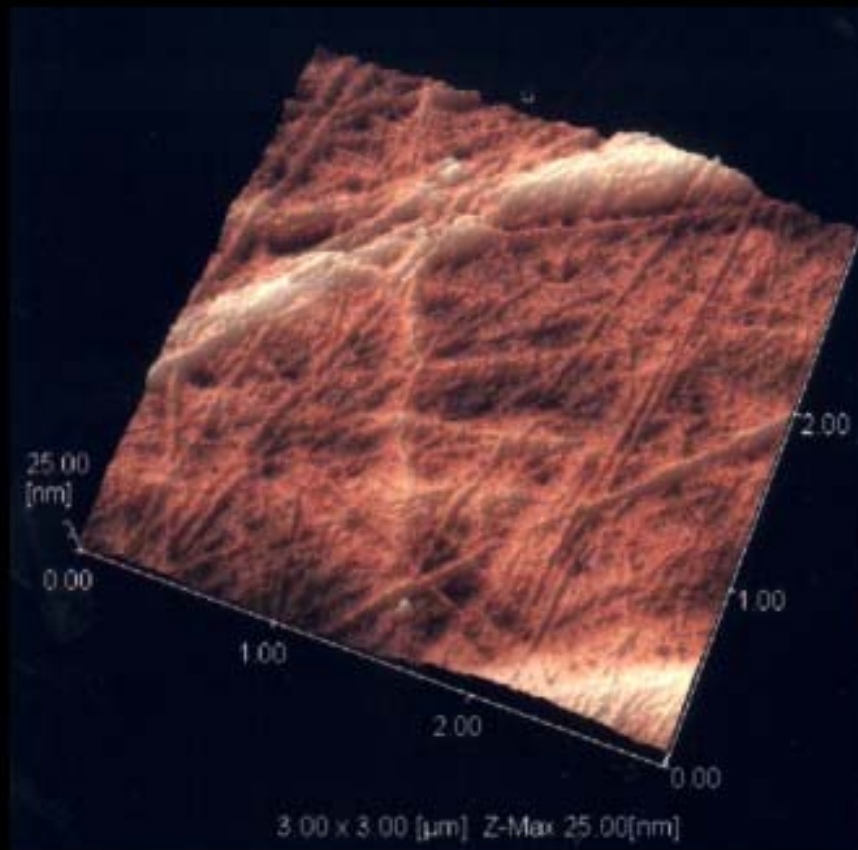
1. REPORT DATE 00 JUN 2003	2. REPORT TYPE N/A	3. DATES COVERED -	
4. TITLE AND SUBTITLE Cell Sheet Engineering with Intelligent Polymer-Grafted Surfaces		5a. CONTRACT NUMBER	
		5b. GRANT NUMBER	
		5c. PROGRAM ELEMENT NUMBER	
6. AUTHOR(S)		5d. PROJECT NUMBER	
		5e. TASK NUMBER	
		5f. WORK UNIT NUMBER	
7. PERFORMING ORGANIZATION NAME(S) AND ADDRESS(ES) Tokyo Women' Med. University CREST, JST, Japan		8. PERFORMING ORGANIZATION REPORT NUMBER	
9. SPONSORING/MONITORING AGENCY NAME(S) AND ADDRESS(ES)		10. SPONSOR/MONITOR'S ACRONYM(S)	
		11. SPONSOR/MONITOR'S REPORT NUMBER(S)	
12. DISTRIBUTION/AVAILABILITY STATEMENT Approved for public release, distribution unlimited			
13. SUPPLEMENTARY NOTES See also ADM001697, ARO-44924.1-EG-CF, International Conference on Intelligent Materials (5th)(Smart Systems & Nanotechnology)., The original document contains color images.			
14. ABSTRACT			
15. SUBJECT TERMS			
16. SECURITY CLASSIFICATION OF:			17. LIMITATION OF ABSTRACT
a. REPORT unclassified	b. ABSTRACT unclassified	c. THIS PAGE unclassified	UU
			18. NUMBER OF PAGES 21
			19a. NAME OF RESPONSIBLE PERSON

Temperature-Responsive Culture Dish

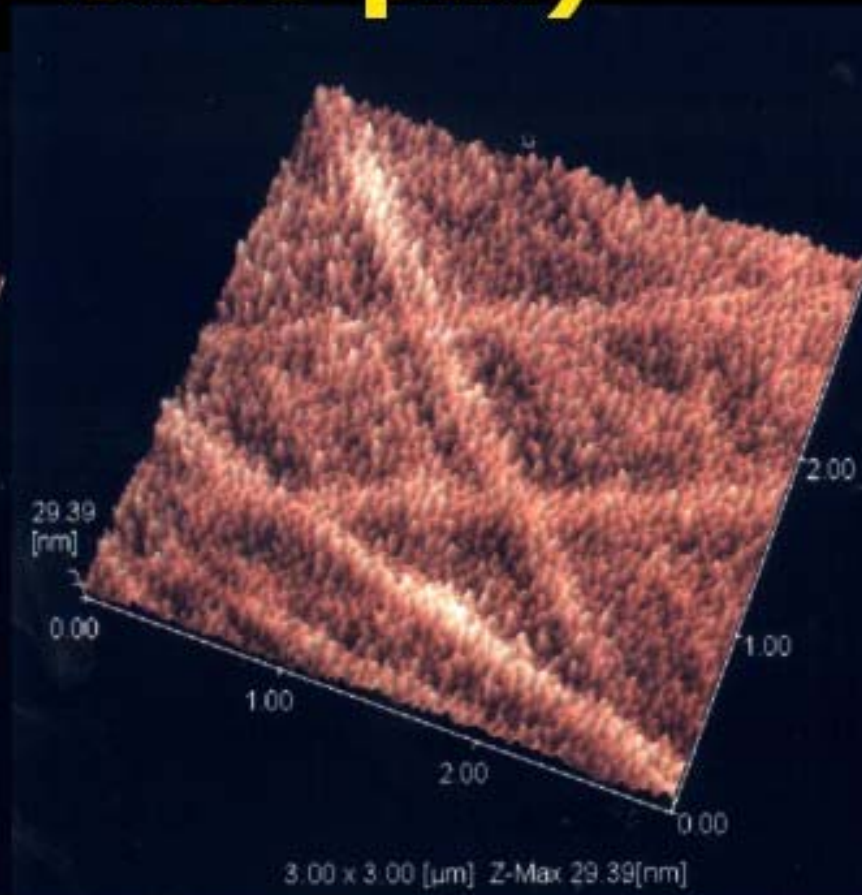
- grafted with temperature-responsive polymer, poly(*N*-isopropylacrylamide)
- 37°C hydrophobic ⇒ **cell attachment**
- below 32°C hydrophilic ⇒ **cell detachment**



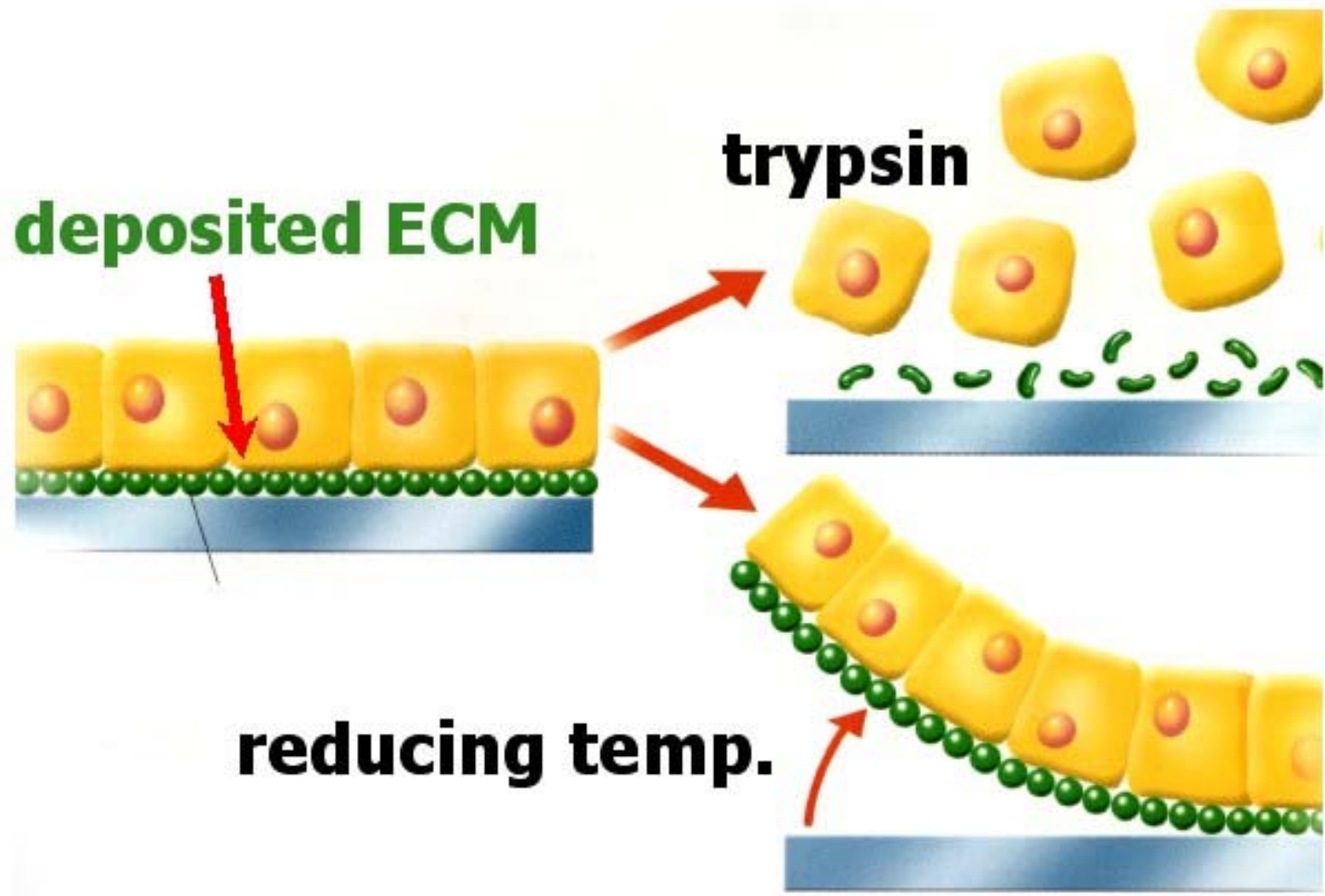
AFM ($3.00 \times 3.00 \mu\text{m}$)



TCPS



PIPAAm



Deposited ECM is recovered together with Cell Sheets.

Cell Sheet Engineering

Clinical Appl. Road Map

Single Cell Sheets

Skin Epithel, Cornea Epithel,

Cornea Endothel,

Retina Pigmented Epithel, Urothel

Periodontal Ligament

Homotypically Stratified Sheets

Cardiac Muscle

Heterotypically Stratified Sheets

Liver & Kidney Tissues



Eye

Cornea

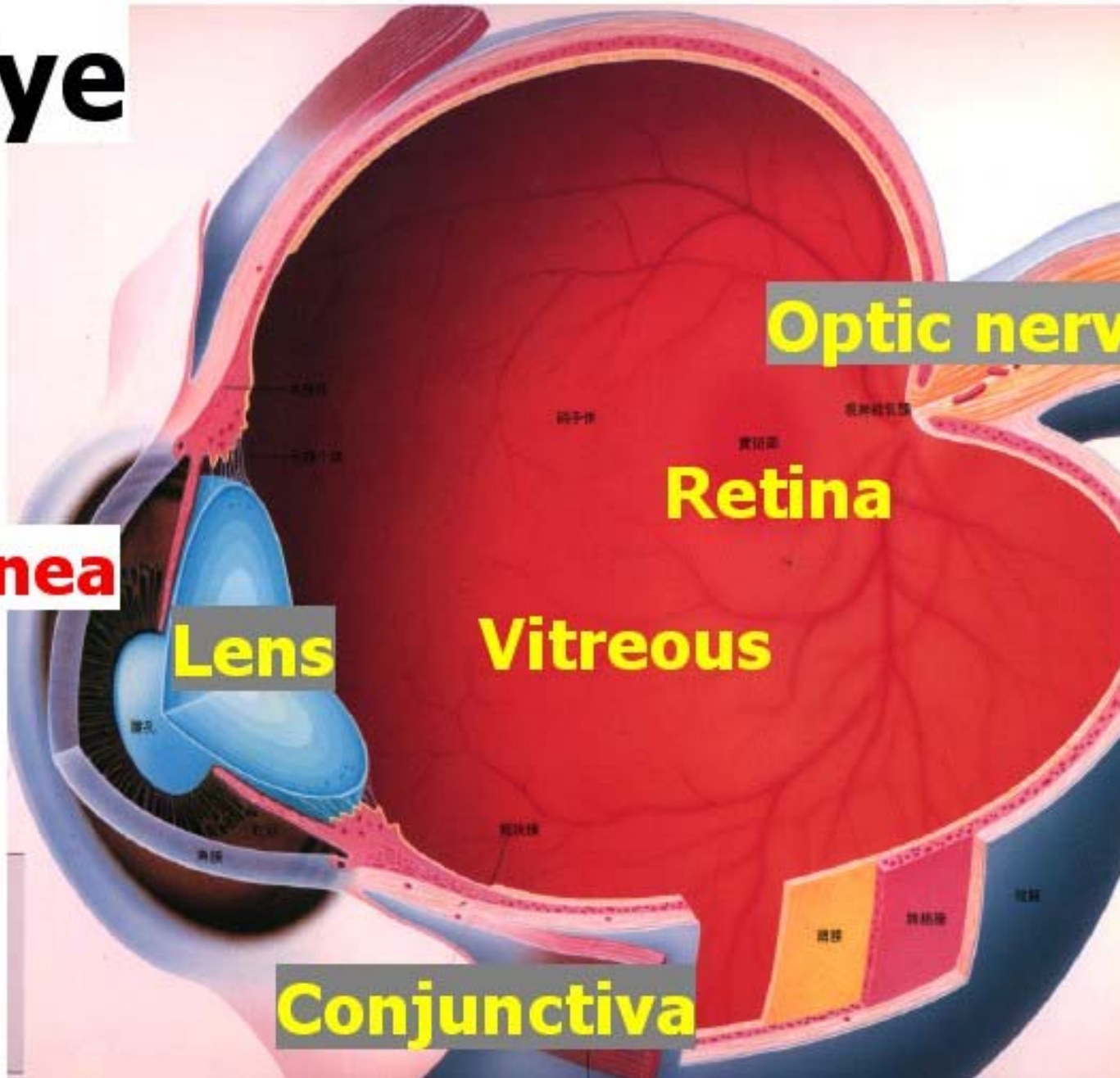
Lens

Optic nerve

Retina

Vitreous

Conjunctiva



***Organ/Tissue
Transplantation***

**Limited donor
Rejection**



**Tissue
Engineering**



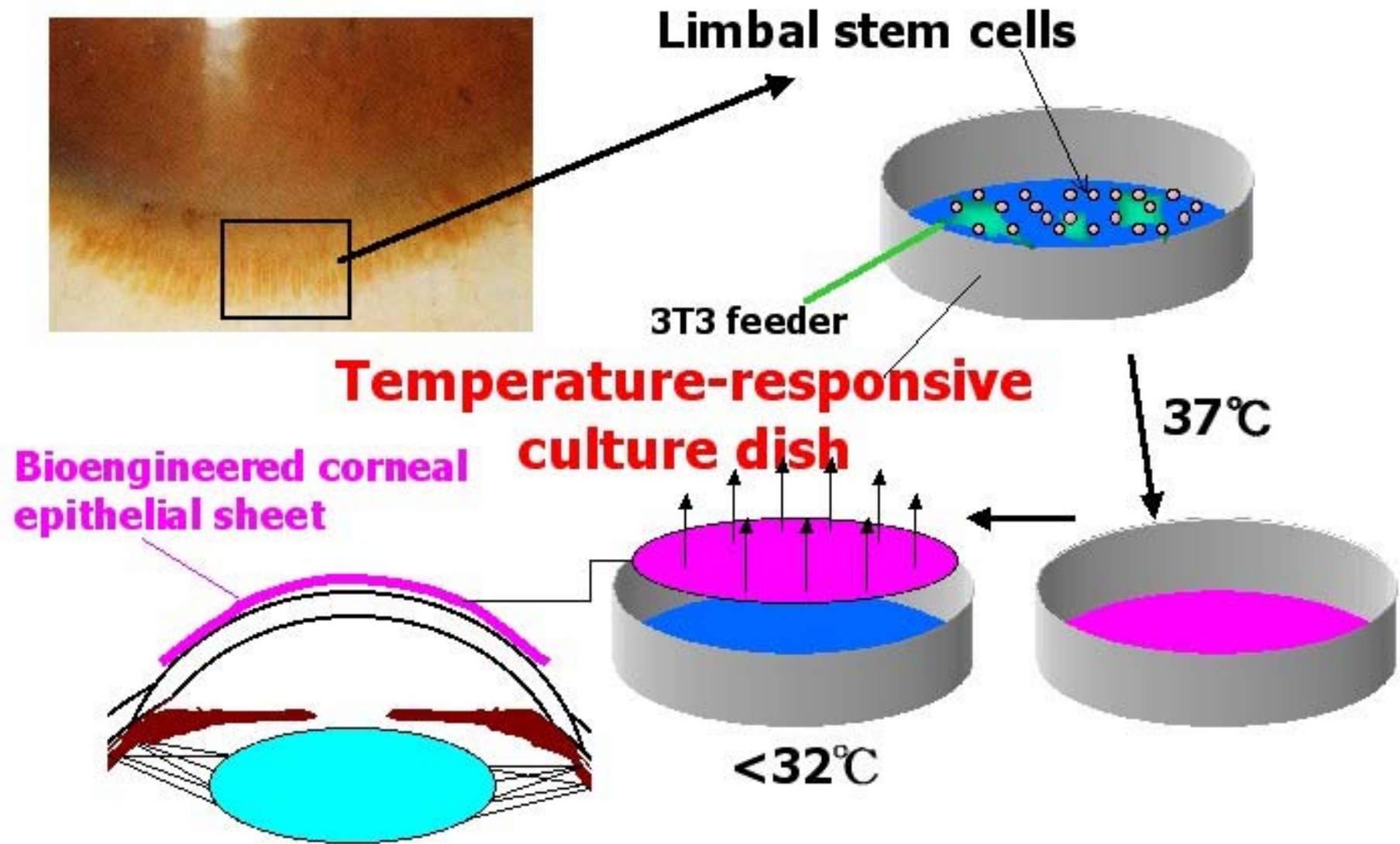
alkali injury



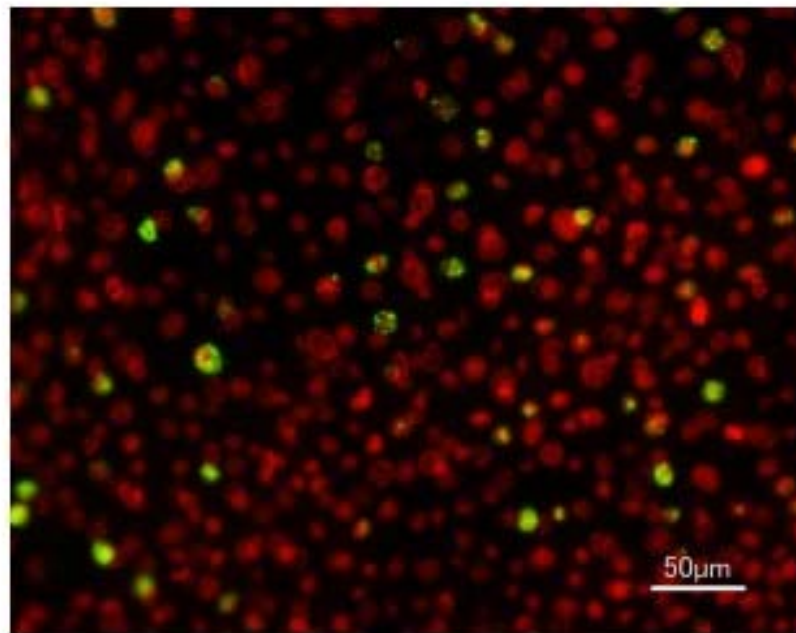
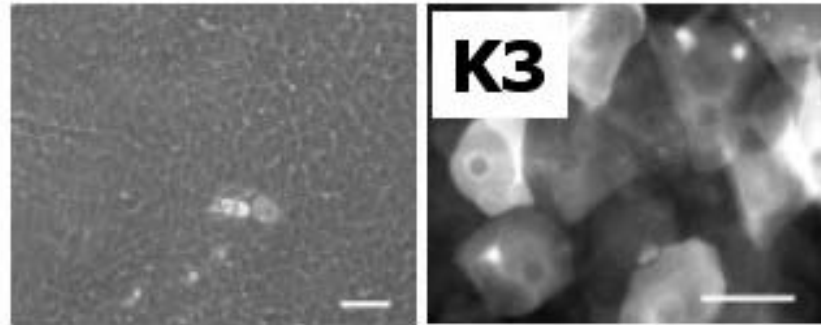
Stevens-Johnson syndrome

All the stem cells are exhausted.

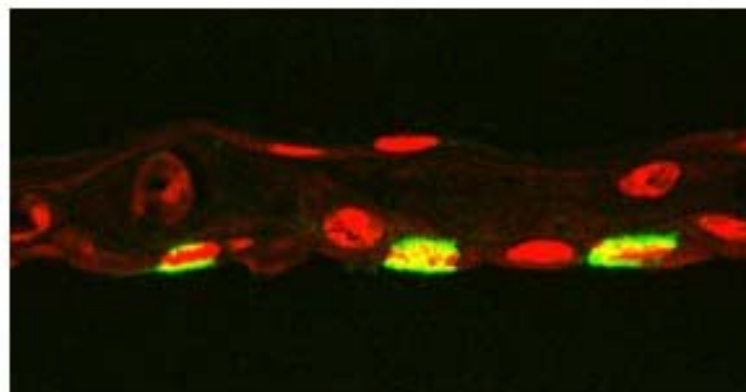
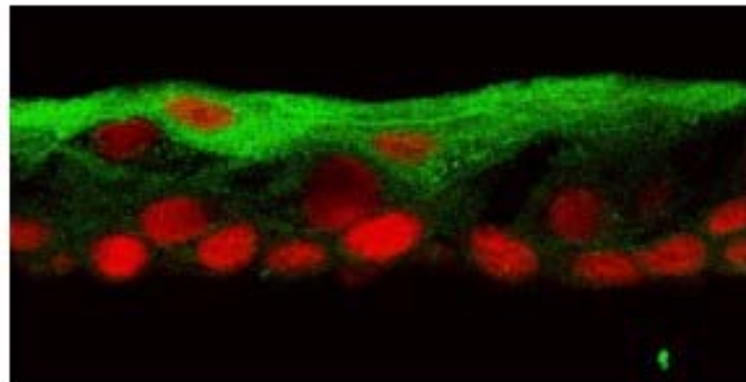
The Present Carrier-Free Method



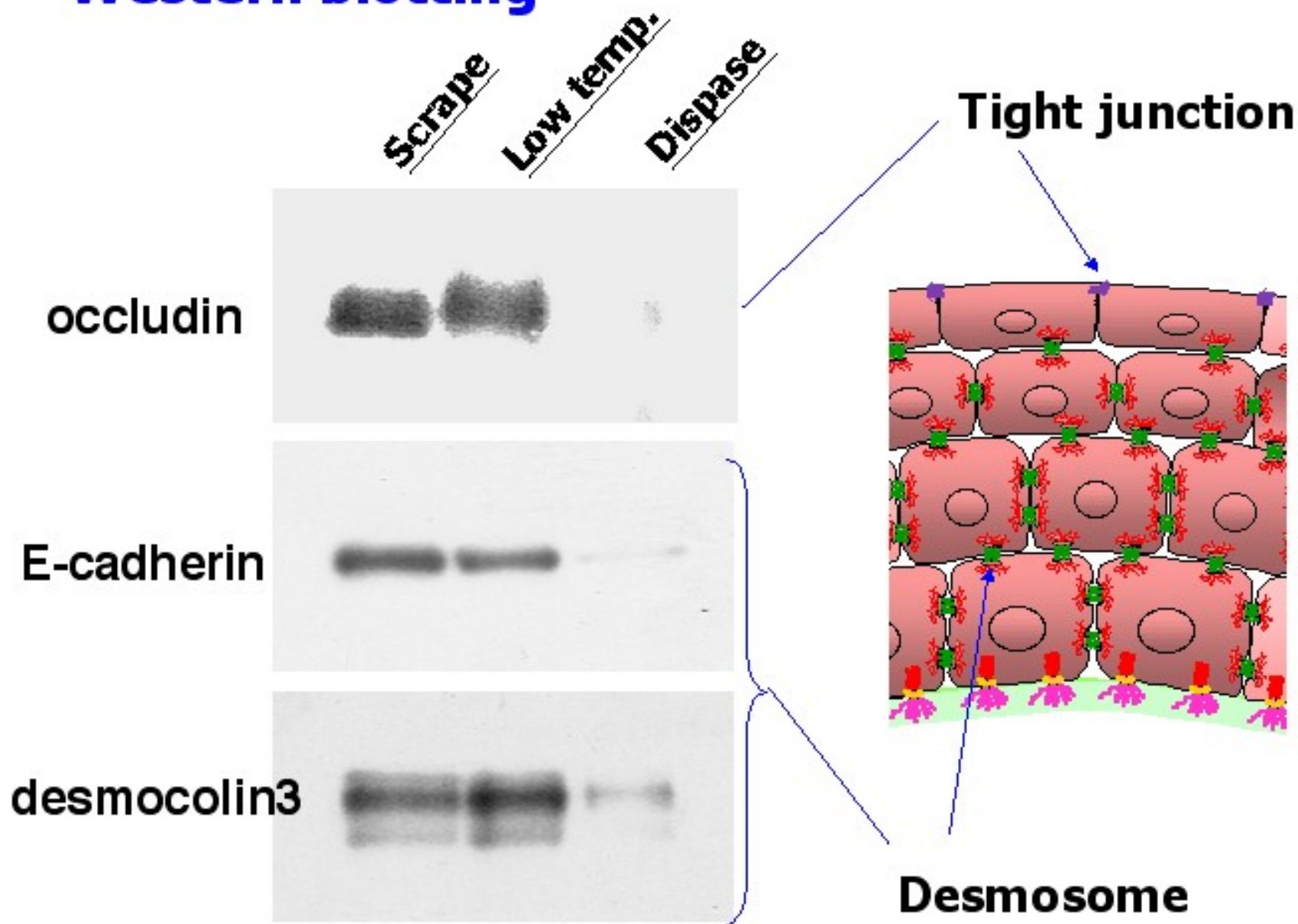
Harvester Human Corneal Epithelial Sheets



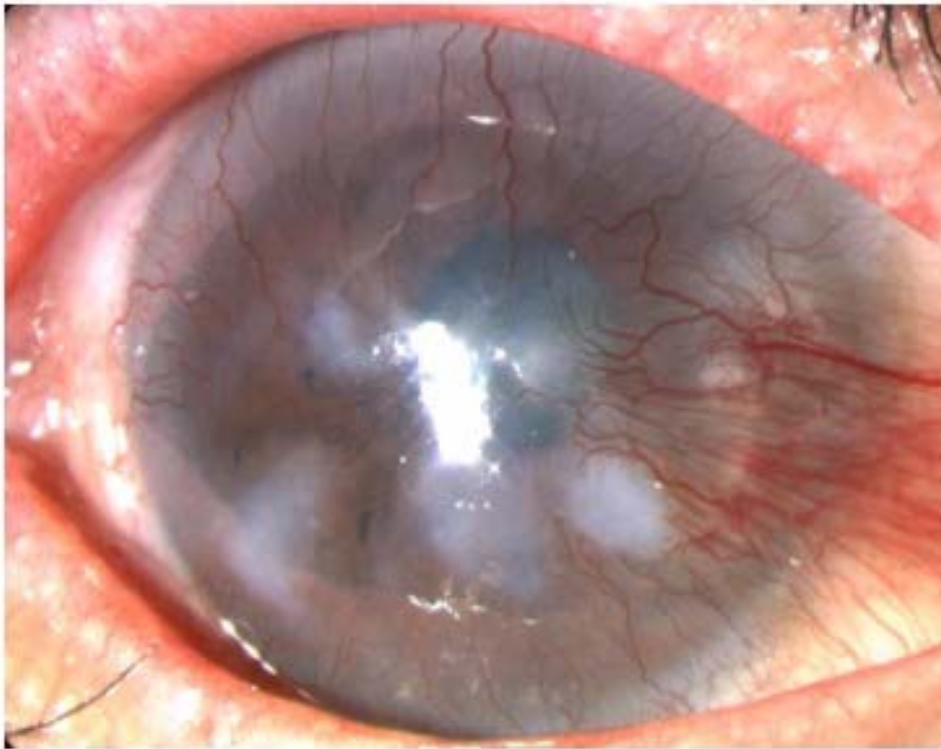
BrdU



Western blotting



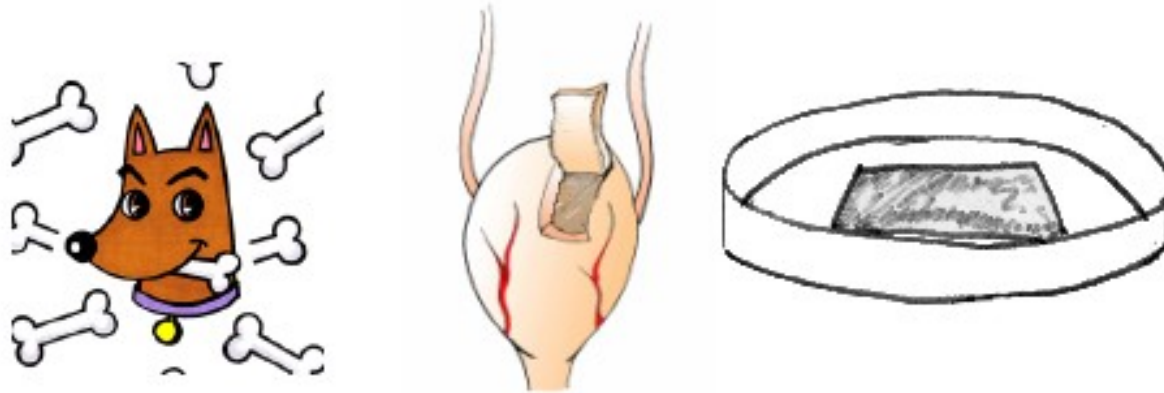
Pre-Ope



1-Month Post-Ope

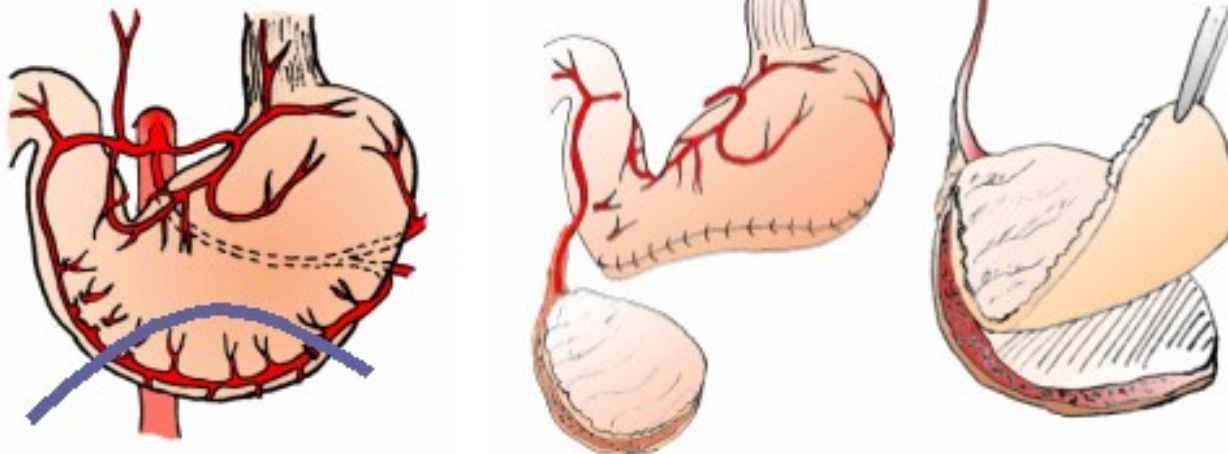


Mucosal Replacement with Cultured Urothelial Cell Sheets



+

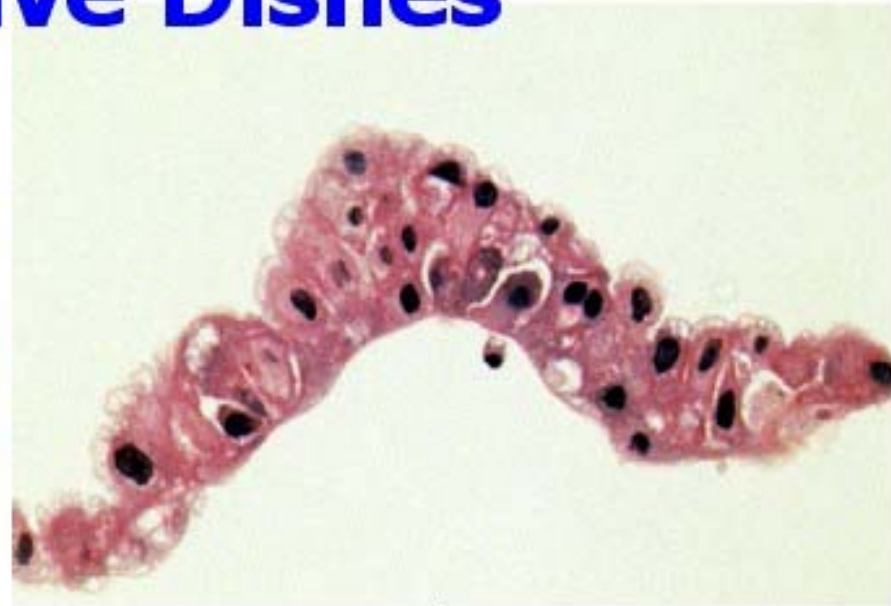
= ?



Urothelial Cell Sheets **Harvested from Temp.- Responsive Dishes**



**mono-layer
domain**

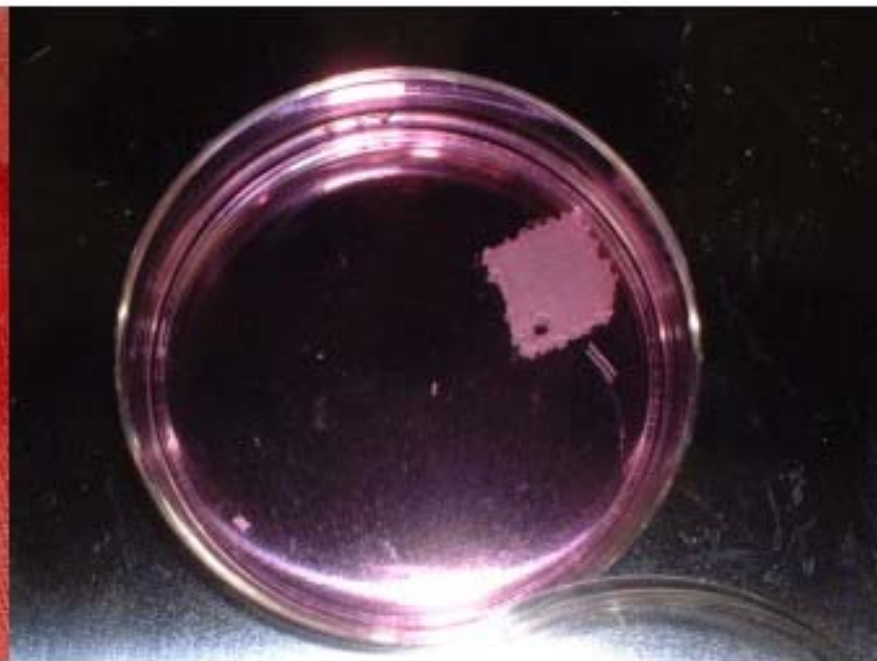


**multi-layer
domain**

Autotransplantation of Urothelial Cell Sheets onto Demucosalized Stomach Flaps



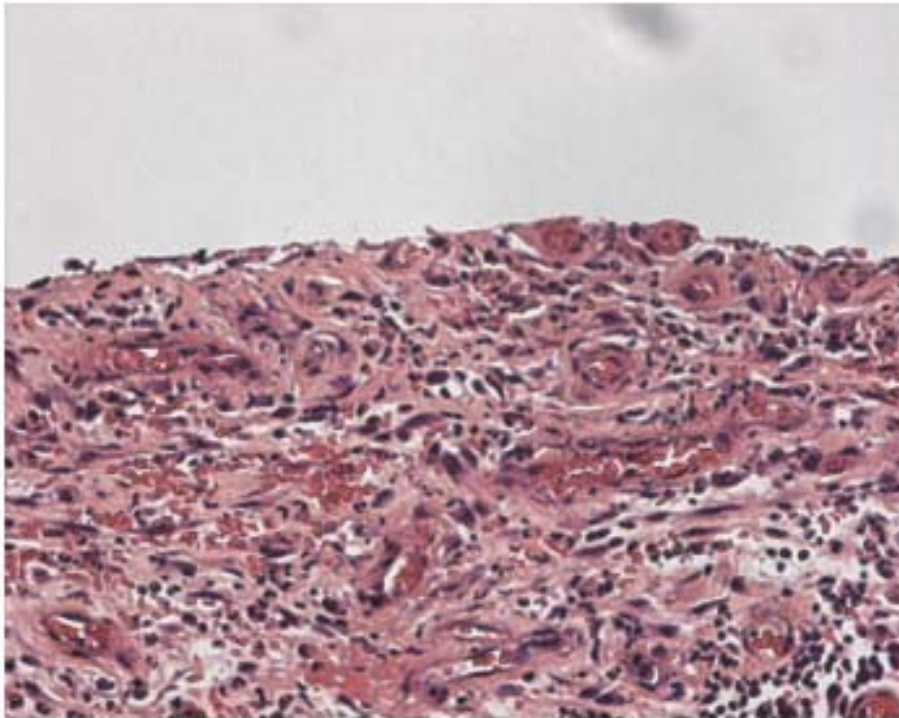
**demucosalized
stomach flaps**



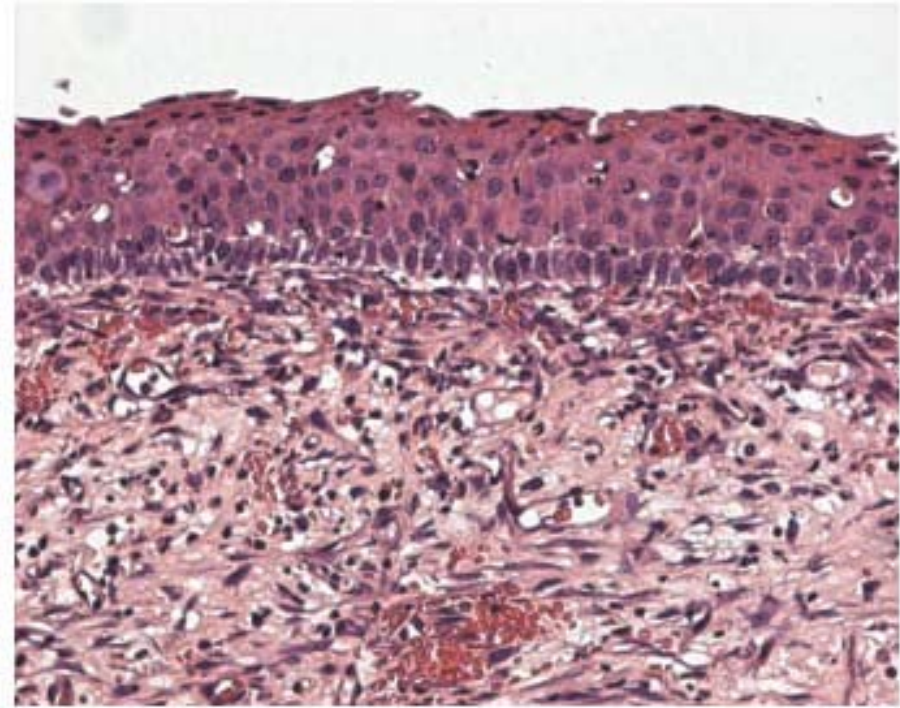
harvested cell sheets

Regenerated Urothelium

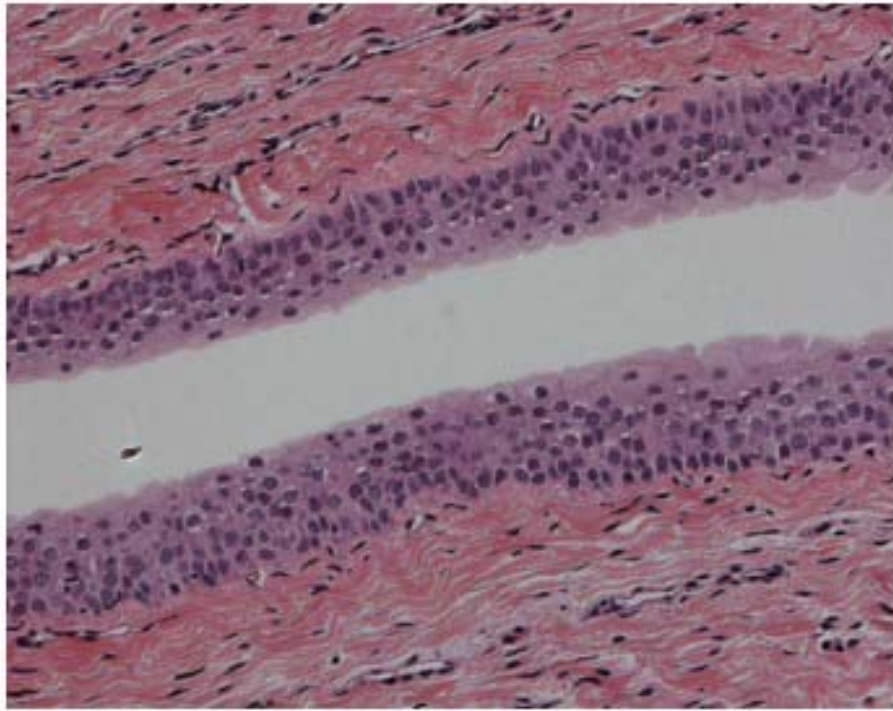
3-Week after Autotransplantation



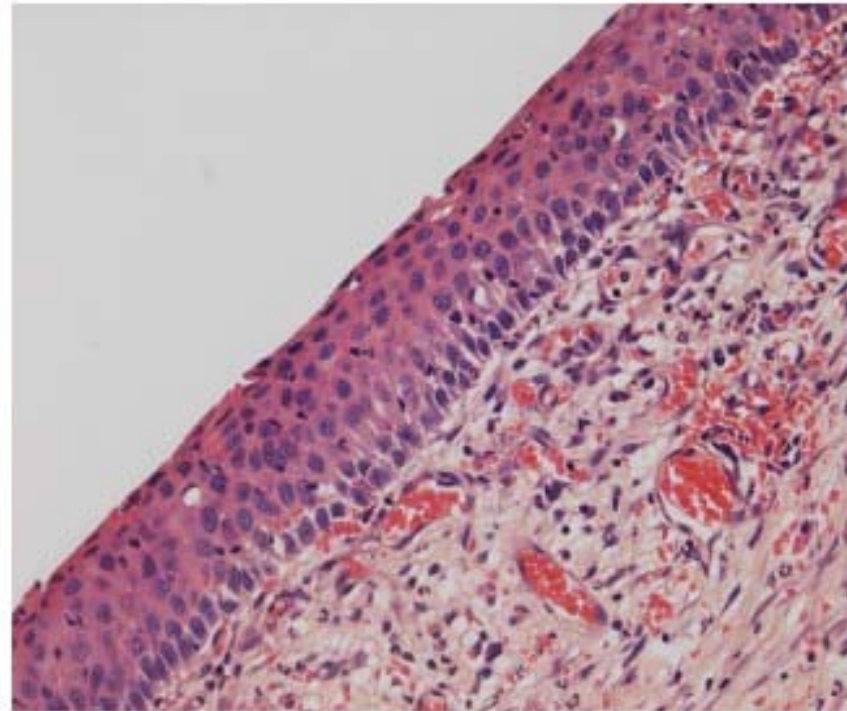
without cell sheets



with cell sheets

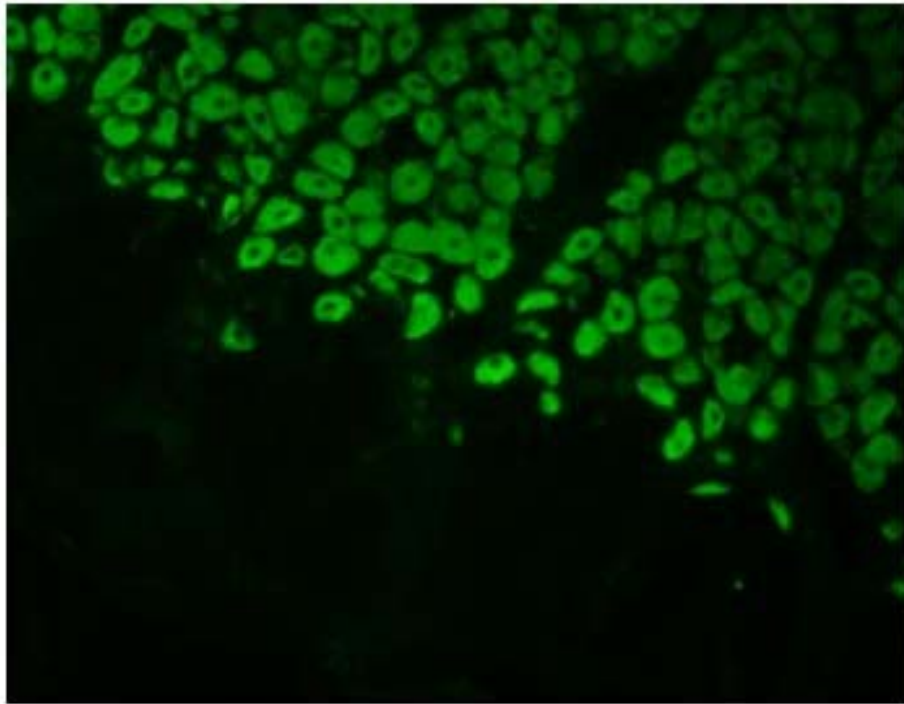


Native Ureter

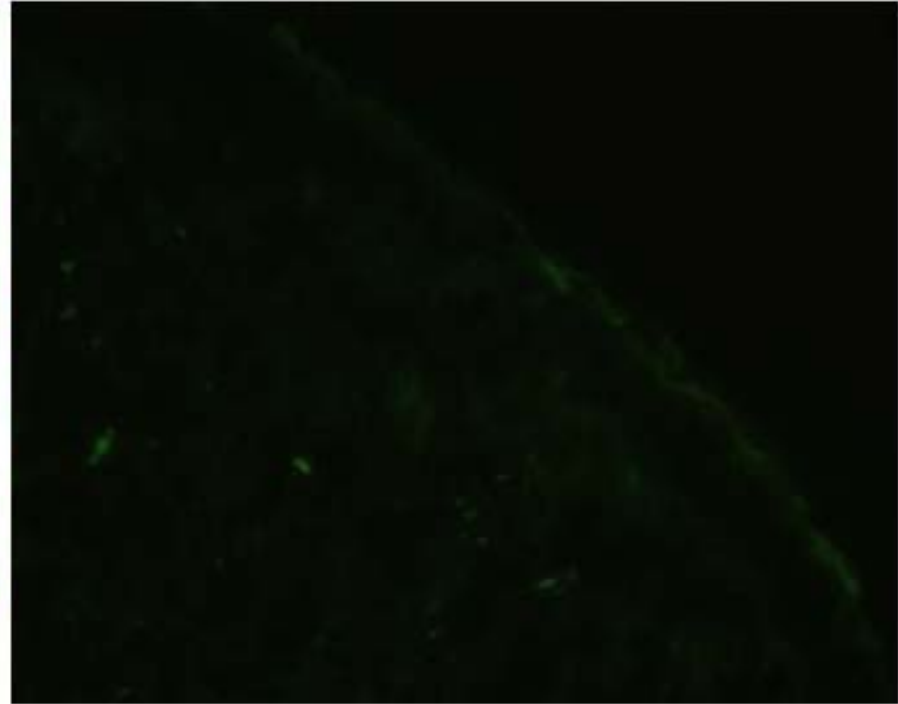


**Regenerated
Urothelium**

Stomach Proton Pump- **Staining**

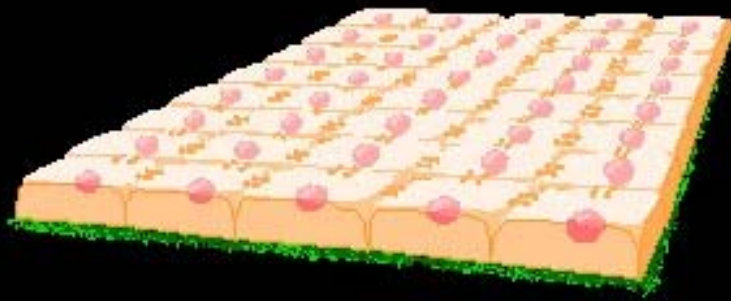


native stomach

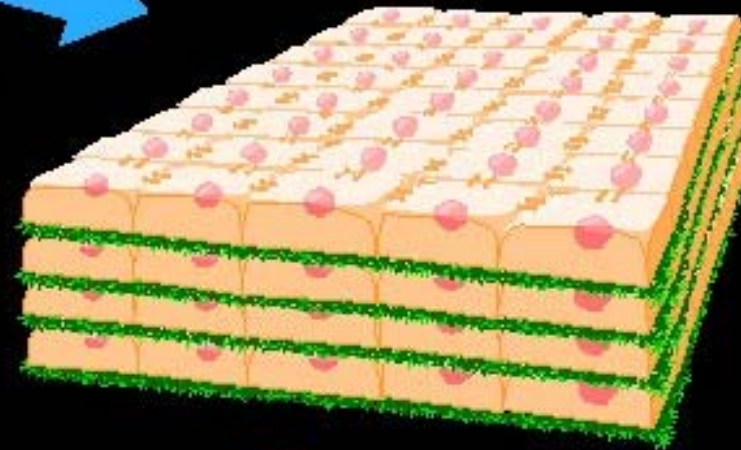


**regenerated
urothelium**

Stratify Layer by Layer

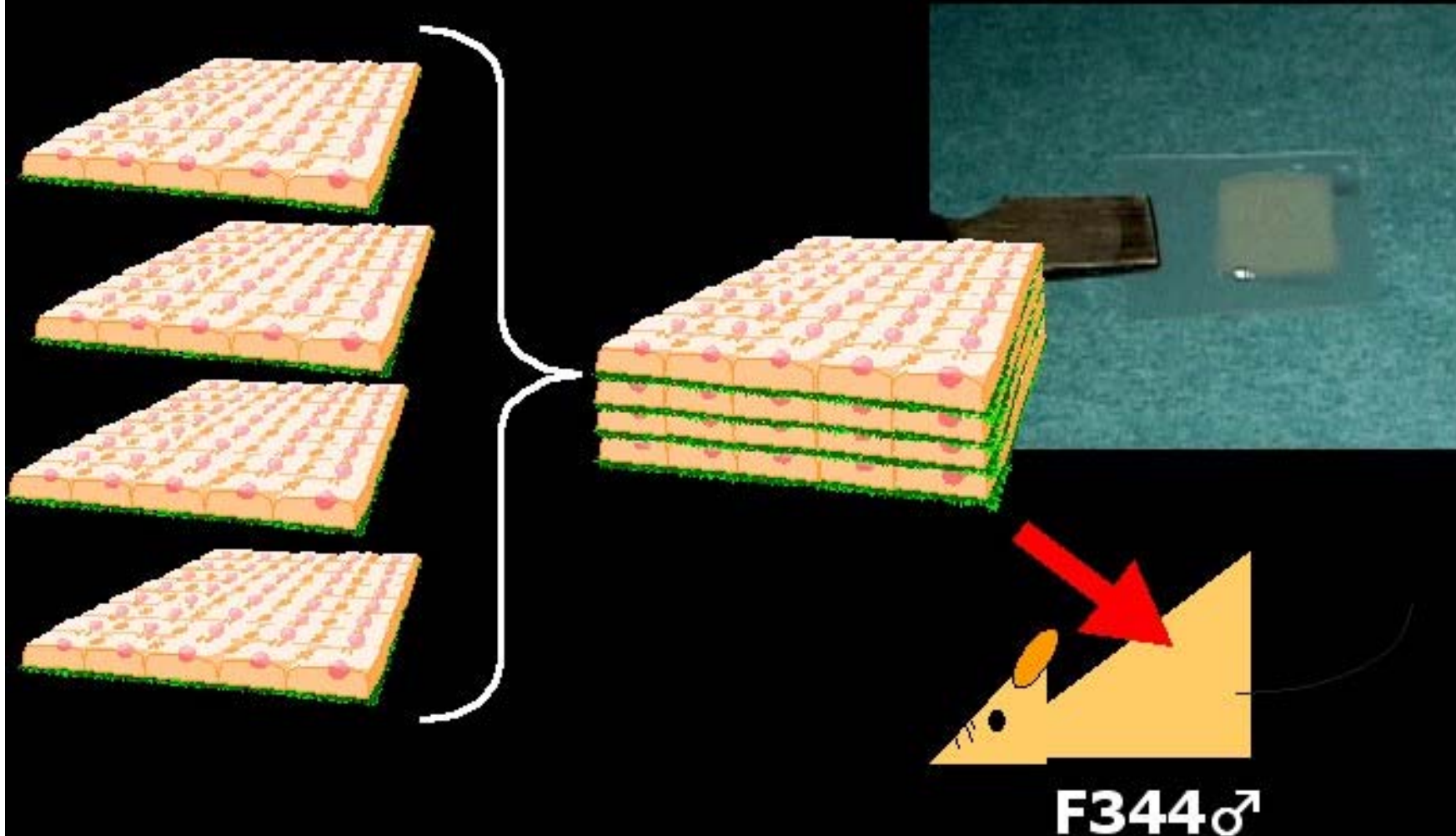


cardiac myocyte sheet

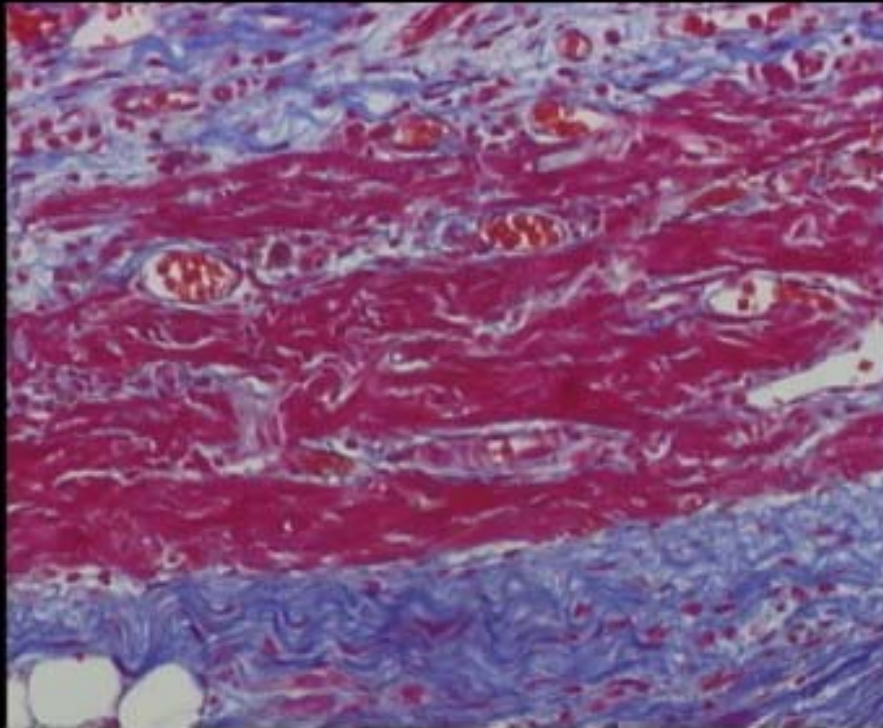


cardiac patch

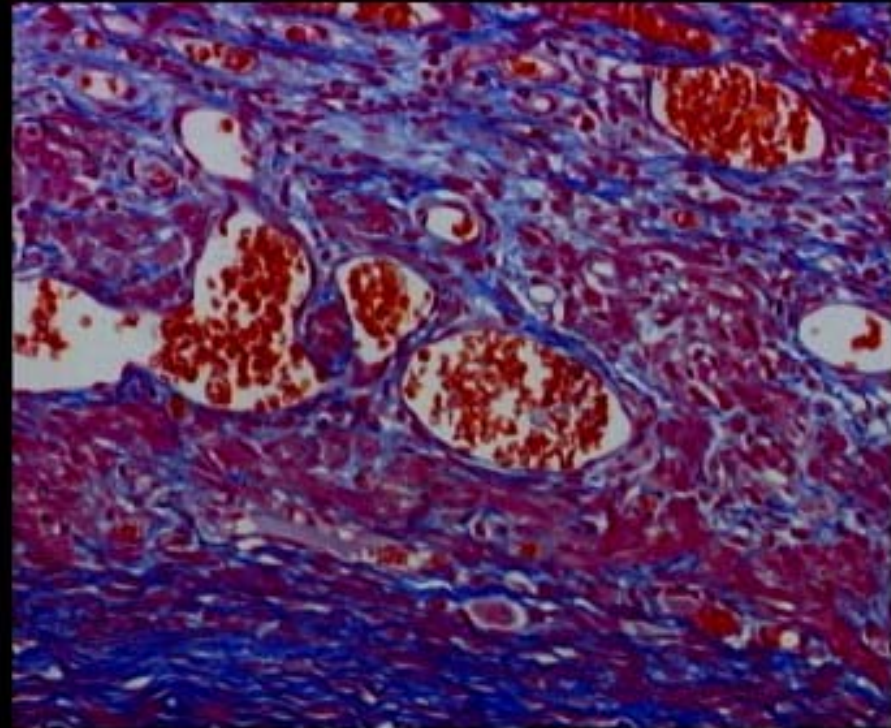
Subcutaneous Transplantation of Cardiac Patch



Polysurgery Prevents Necrosis of Thick Grafts



**3-sheet graft
+
3-sheet graft**



**6-sheet graft
at one time**

REFERENCES

Shimizu T, Yamato M, Isoi Y, Akutsu T, Setomaru T, Abe K, Kikuchi A, Umezu M, Okano T. Fabrication of pulsatile cardiac tissue grafts using a novel 3-dimensional cell sheet manipulation technique and temperature-responsive cell culture surfaces. *Circ Res.* 2002;90(3):e40.

Shimizu T, Yamato M, Akutsu T, Shibata T, Isoi Y, Kikuchi A, Umezu M, Okano T. Electrically communicating three-dimensional cardiac tissue mimic fabricated by layered cultured cardiomyocyte sheets. *J Biomed Mater Res.* 2002;60(1):110-7.

Yamato M, Konno C, Utsumi M, Kikuchi A, Okano T. Thermally responsive polymer-grafted surfaces facilitate patterned cell seeding and co-culture. *Biomaterials.* 2002;23(2):561-7.

Hirose M, Kwon OH, Yamato M, Kikuchi A, Okano T. Creation of designed shape cell sheets that are noninvasively harvested and moved onto another surface. *Biomacromolecules.* 2000;1(3):377-81.

Yamato M, Utsumi M, Kushida A, Konno C, Kikuchi A, Okano T. Thermo-responsive culture dishes allow the intact harvest of multilayered keratinocyte sheets without disperse by reducing temperature. *Tissue Eng.* 2001;7(4):473-80.