



U.S. Army Engineer Research and Development Center, Hanover, New Hampshire

Inclusion of Freeze–Thaw-Induced Soil and Bank Erosion in CoE Planning, Engineering, O&M, and Model Development

Soil freeze–thaw (FT) processes directly affect soil erodibility and bank-failure susceptibility (Fig. 1) (Gatto et al. 2001, Simon et al. 2000) and thus have substantial impact on shoreline or bank evolution, system-wide sediment management, reservoir infilling, levee stability, and sediment-bound contaminant transport within watersheds. This technical note outlines how FT cycling affects overland soil erosion and bank failure. In so doing, it alerts Corps planners, designers, O&M personnel, and water-resources modelers to the importance of knowing the magnitude of these effects on sediment detachment, failure, and transport in such cold-climate, navigable systems as the Mississippi, Illinois, Ohio, Missouri, Susquehanna, Delaware, Columbia, and Sacramento Rivers, and the Great Lakes and their connecting channels.

Freeze–thaw processes

During freezing, ice crystals form within a soil, tightly binding soil particles and keeping the soil highly resistant to erosion and failure. However, that ice also pushes soil particles apart, reducing interparticle friction so that thawed soils are less cohesive, dense, and strong (Gatto 2000). One FT cycle can reduce soil shear strength by 50% or more (Formanek et al. 1984, Van Klaveren 1987).

Also, the soil–surface geometry of thawed soil is often changed by frost heaving during freezing, unit weight is often increased by the soil water drawn into the freezing soil, and infiltration is reduced because water content is usually high. The magnitude of these effects is variable and depends on soil type, water content, and freezing intensity.

Soil FT cycles are generally inferred from surface air temperature records. According to Hershfield (1974), a FT event occurs when the air temperature drops below freezing in a calendar day. The presence of frozen ground, which confirms FT processes, is noted over most of the United States (Fig. 2). The most frost-susceptible soils are cohesive, silty sediments. Silts absorb water rapidly because they have particles small enough to provide comparatively high capillary rise and large enough to furnish voids of adequate size to allow rapid flow of water (Jumikis 1962). These characteristics lead to rapid saturation of the soil voids. Coarser-grained soils do not retain a significant volume of water after wetting, and finer-grained soils do not absorb water rapidly. However, sand may become frost susceptible if it is well compacted (Janson 1963), and needle ice will form in almost any soil type (Chamberlain 1981).

FT effects increase soil erodibility and instability such that overland runoff and floods in the spring often erode significantly more thawed upland and bank soil than at other times of the year (Renard et al. 1997). Research shows that in areas where seasonal frost forms, processes related to soil FT contribute to 40 to 85% of overland soil erosion (Zuzel et al. 1982, McCool 1990) and 30 to 90% of bank failures (Thorne 1978, Sterrett 1980, Gardiner 1983, Reid 1985, Lawler 1993, Chase et al. 2001). When rills (Fig. 3) are present on hillslopes they transport 80% of the sediment eroded from that slope (Mutchler and Young 1975). Thus, rill flows are far more important in hillslope erosion than overland sheet flow.



Figure 1. Banks are highly susceptible to failure upon thaw.

Report Documentation Page

Form Approved
OMB No. 0704-0188

Public reporting burden for the collection of information is estimated to average 1 hour per response, including the time for reviewing instructions, searching existing data sources, gathering and maintaining the data needed, and completing and reviewing the collection of information. Send comments regarding this burden estimate or any other aspect of this collection of information, including suggestions for reducing this burden, to Washington Headquarters Services, Directorate for Information Operations and Reports, 1215 Jefferson Davis Highway, Suite 1204, Arlington VA 22202-4302. Respondents should be aware that notwithstanding any other provision of law, no person shall be subject to a penalty for failing to comply with a collection of information if it does not display a currently valid OMB control number.

1. REPORT DATE APR 2004		2. REPORT TYPE N/A		3. DATES COVERED -	
4. TITLE AND SUBTITLE Cold Regions Engineering: Inclusion of Freeze-Thaw-Induced Soil and Bank Erosion in CoE Planning, Engineering, O&M, and Model Development				5a. CONTRACT NUMBER	
				5b. GRANT NUMBER	
				5c. PROGRAM ELEMENT NUMBER	
6. AUTHOR(S)				5d. PROJECT NUMBER	
				5e. TASK NUMBER	
				5f. WORK UNIT NUMBER	
7. PERFORMING ORGANIZATION NAME(S) AND ADDRESS(ES) U.S. Army Engineer Research and Development Center 72 Lyme Road Hanover, NH 03755-1290				8. PERFORMING ORGANIZATION REPORT NUMBER	
9. SPONSORING/MONITORING AGENCY NAME(S) AND ADDRESS(ES)				10. SPONSOR/MONITOR'S ACRONYM(S)	
				11. SPONSOR/MONITOR'S REPORT NUMBER(S)	
12. DISTRIBUTION/AVAILABILITY STATEMENT Approved for public release, distribution unlimited					
13. SUPPLEMENTARY NOTES The original document contains color images.					
14. ABSTRACT					
15. SUBJECT TERMS					
16. SECURITY CLASSIFICATION OF:			17. LIMITATION OF ABSTRACT UU	18. NUMBER OF PAGES 5	19a. NAME OF RESPONSIBLE PERSON
a. REPORT unclassified	b. ABSTRACT unclassified	c. THIS PAGE unclassified			

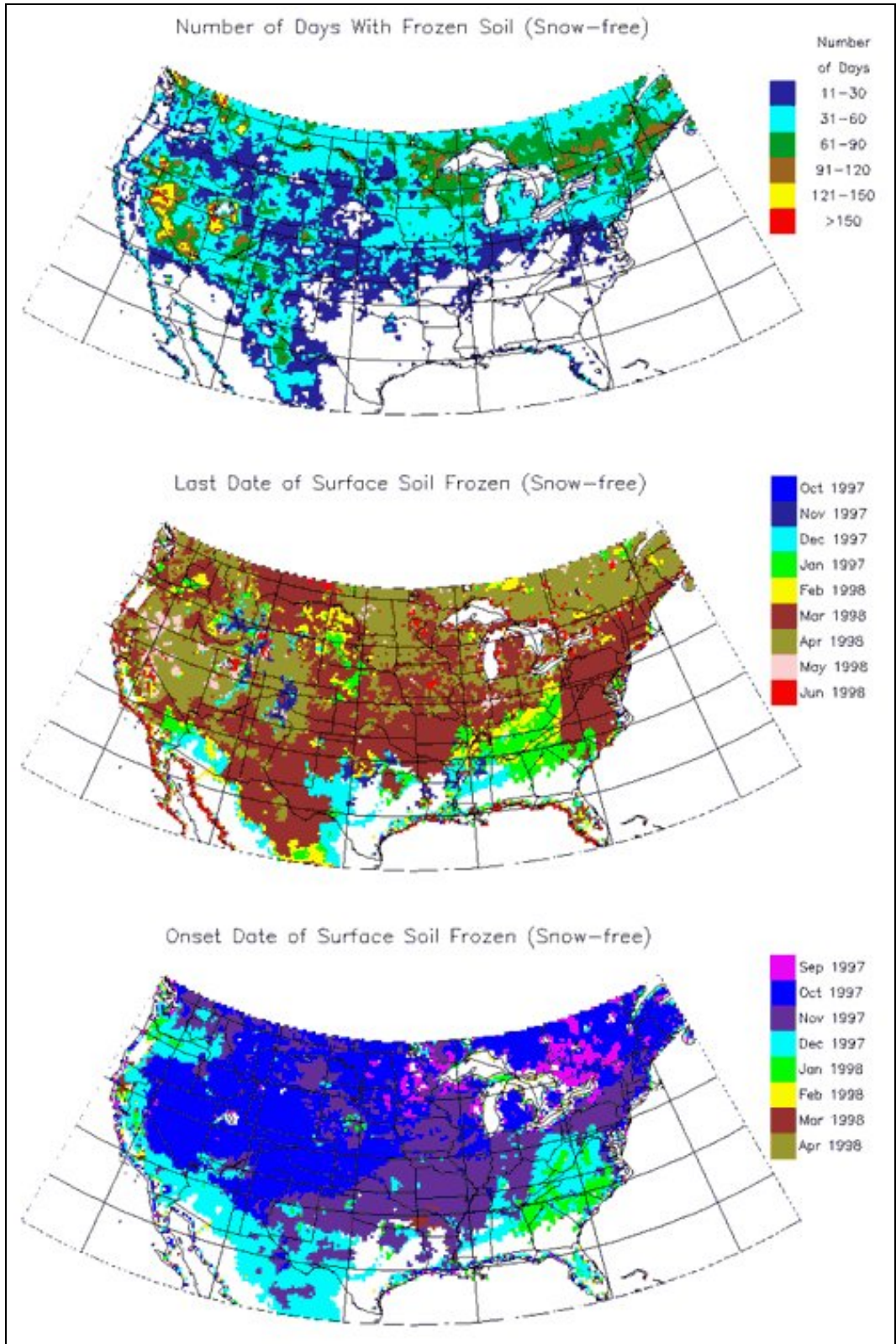


Figure 2. Soil FT detected over snow-free ground using passive microwave. (From Zhang and Armstrong 2001. Used by permission.)



Figure 3. Rill formation is enhanced in frost-susceptible soils as a result of freeze–thaw cycling.

Our research shows that rill development and sediment erosion by channelized flow on a thawed frost-susceptible soil are increased between 1.2 and 4.9 times after just one FT cycle (Ferrick and Gatto in press). The precise magnitude of this increase is directly related to soil moisture. Soil moisture is often high upon thaw and can be equally important in bank failures. Our observations show substantial variations in soil moisture along a silt bank face and between banks with different orientations. Total FT cycles, and freezing intensity and duration, also vary with bank orientation (Gatto and Ferrick in press).

Recommendations

Watersheds that experience ground freezing have greatly enhanced soil erodibility and bank-failure susceptibility following thaw. Much of the sediment load of upland rivers coincides with snowmelt as a result of overland erosion and bank failure during the period of increased soil weakness due to freeze–thaw processes. The sediment load resulting from FT affects most of the major navigable and non-navigable river systems and their tributaries, including the Mississippi, Missouri, Illinois, Ohio, Susquehanna, Delaware, Columbia, and Sacramento, for which the Corps has navigation and flood-control responsibilities. As a result, planning, engineering, and O&M activities that address sediment management should include

1. Confirmation via FT or frozen ground mapping that FT impacts occur in the project area (see, for example, Hershfield 1974);
2. Measurements or estimates of seasonal changes in soil moisture and strength to define FT weakening (one method is proposed in Gatto and Ferrick [in press]);
3. Measurements or estimates of the rate of recovery of soil strength to pre-FT conditions (Gatto and Ferrick in press); and
4. Measurements or estimates of upland sediment eroded by overland flow and bank sediment that failed immediately following spring thaw (Gatto and Ferrick in press).

Future R&D efforts will provide tools that will make these tasks easier by providing geospatially referenced estimates of FT impacts on soil properties. Soil erosion and bank failure models applied in FT-susceptible zones must have the following capabilities:

1. Defines relationships of seasonal changes in soil moisture and strength with the number of FT cycles, the depth of ground frost, and the antecedent soil moisture conditions; and
2. Adjusts seasonal erodibility coefficients compatible with the field data obtained above.

References

- Chamberlain, E.J.** (1981) Personal communication.
- Chase, R.B., A.E. Kehew, and W.W. Montgomery** (2001) Determination of slope displacement mechanisms and causes: An approach using new geometric modelling techniques and climate data. Chapter 4 in *Landscape Erosion and Evolution Modeling* (R.S. Harmon and W.W. Doe III, Ed.). New York: Kluwer, p. 57–87.
- Ferrick, M.G., and L.W. Gatto** (in press) Quantifying the effect of a freeze–thaw cycle on soil erosion: Laboratory experiments. Manuscript submitted to *Earth Surface Processes and Landforms*, November 2003.
- Formanek, G.E., D.K. McCool, and R.I. Papendick** (1984) Freeze–thaw and consolidation effects on strength of a wet silt loam. *Transactions of the ASAE*, **27**(6): 1749–1752.
- Gardiner, T.** (1983) Some factors promoting channel bank erosion, River Lagan, County Down. *Journal of Earth Science*, Royal Dublin Society, **5**: 231–239.
- Gatto, L.W.** (2000) Soil freeze–thaw-induced changes to a simulated rill: Potential impacts on soil erosion. *Geomorphology*, **32**: 147–160.
- Gatto, L.W., and M.G. Ferrick** (in press) Freeze–thaw effects on bank erosion and stability. Abstract submitted to the 4th International Conference on Land Degradation, March 2004.
- Gatto, L.W., J.J. Halvorson, D.K. McCool, and A.J. Palazzo** (2001) Effects of freeze–thaw cycling on soil erosion. Chapter 3 in *Landscape Erosion and Evolution Modelling*. New York: Kluwer Academic/Plenum Publishers.
- Hershfield, M.D.** (1974) The frequency of freeze–thaw cycles. *Journal of Applied Meteorology*, **13**(3): 348–354.
- Janson, L.** (1963) *Frost Penetration in Sandy Soil*. Goteborg, Sweden: Elanders Boktryckeri, 165 p.
- Jumikis, A.R.** (1962) *Soil Mechanics*. Princeton, New Jersey: D. Van Nostrand Co., Inc., 791 p.
- Lawler, D.M.** (1993) Needle ice processes and sediment mobilization on river banks: The River Ilston, West Glamorgan, United Kingdom. *Journal of Hydrology*, **150**: 81–114.
- McCool, D.K.** (1990) Crop management effects on runoff and soil loss from thawing soil. In *Proceedings, International Symposium on Frozen Soil Impacts on Agricultural, Range, and Forest Lands* (K.R. Cooley, Ed.). U.S. Army Cold Regions Research and Engineering Laboratory, Special Report 90-1: 171–176.
- Mutchler, C., and R. Young** (1975) Soil detachment by raindrops. Agricultural Research Service Report S-40, p. 113–117.
- Reid, J.R.** (1985) Bank-erosion processes in a cool-temperate environment, Orwell Lake, Minnesota. *Geological Society of America Bulletin*, **96**(6): 781–792.
- Renard, K.G., G.R. Foster, G.A. Weesies, D.K. McCool, and D.C. Yoder (Coordinators)** (1997) Predicting soil erosion by water: A guide of conservation planning with the revised universal soil loss equation (RUSLE). U.S. Department of Agriculture, Agriculture Handbook No. 703, 404 p.
- Simon, A., A. Curini, S.E. Darby, and E.J. Langendoen** (2000) Bank and near-bank processes in an incised channel. *Geomorphology*, **35**: 193–217.
- Sterrett, R.J.** (1980) Factors and mechanics of bluff erosion on Wisconsin’s Great Lakes shorelines. Ph.D. dissertation, University of Wisconsin–Madison, Madison, Wisconsin.
- Thorne, C.R.** (1978) Processes of bank erosion in river channels. Ph.D. thesis, University of East Anglia, Norwich, United Kingdom.
- Van Klaveren, R.W.** (1987) Hydraulic erosion resistance of thawing soil. Ph.D dissertation, Washington State University, Pullman, Washington.
- Zhang, T., and R.L. Armstrong** (2001) Soil freeze/thaw cycles over snow-free land detected by passive microwave remote sensing. *Geophysical Research Letters*, **28**(5): 763–766.

Zuzel, J.F., R.R. Allmaras, and R. Greenwalt (1982) Runoff and soil erosion on frozen soils in northeastern Oregon. *Journal of Soil and Water Conservation*, **37**(6): 351–354.

Acknowledgments

The research described in this technical note was funded by the Regional Sediment Management project 392005, “Freeze–thaw effects on soil and bank erosion and bank stability.” Support for this report was provided through CRREL’s RS/GIS and Water Resources Branch.

* * *

This issue of Cold Regions Engineering was written by Lawrence W. Gatto, Research Geologist, Michael G. Ferrick, Research Hydrologist, and Dr. Kathleen D. White, Research Hydraulic Engineer, Environmental Sciences Branch, U.S. Army Engineer Research and Development Center (ERDC), Cold Regions Research and Engineering Laboratory (CRREL), Hanover, New Hampshire.

Cold Regions Engineering

Cold Regions Engineering is published in accordance with AR 25-30 as one of the information exchange functions of the U.S. Army Corps of Engineers. It is primarily intended to be a forum whereby information on ice engineering work done or managed by Corps field offices can be disseminated to other Corps offices, other U.S. Government agencies, and the engineering community in general. The purpose of *Cold Regions Engineering* is information exchange and not the promulgation of Corps policy; thus, guidance on recommended practice in any given area should be sought through appropriate channels or in other documents. This report’s contents are not to be used for advertising, publication, or promotional purposes. Citation of trade names does not constitute an official endorsement or approval of the use of such commercial products.

The Cold Regions Research and Engineering Laboratory (CRREL) is part of the U.S. Army Corps of Engineers Engineer Research and Development Center (ERDC).

Communications are welcomed. Write to ERDC-CRREL, ATTN: Tim Pangburn, Chief, RS/GIS and Water Resources Branch, 72 Lyme Road, Hanover, NH 03755-1290; call 603-646-4296; or send e-mail to Timothy.Pangburn@erd.usace.army.mil.