



AD NO. _____
DTC PROJECT NO. 8-CO-160-UXO-021
REPORT NO. ATC-8994



STANDARDIZED

**UXO TECHNOLOGY DEMONSTRATION SITE
DESERT EXTREME SCORING RECORD NO. 171**

**SITE LOCATION:
U.S. ARMY YUMA PROVING GROUND**

**DEMONSTRATOR:
TETRA TECH FOSTER WHEELER, INC.
143 UNION BLVD, SUITE 1010
LAKEWOOD, CO 80212**

**TECHNOLOGY TYPE/PLATFORM:
EM61-MKII/PUSHCART**

**PREPARED BY:
U.S. ARMY ABERDEEN TEST CENTER
ABERDEEN PROVING GROUND, MD 21005-5059**

MAY 2005



Prepared for:
U.S. ARMY ENVIRONMENTAL CENTER
ABERDEEN PROVING GROUND, MD 21010-5401

U.S. ARMY DEVELOPMENTAL TEST COMMAND
ABERDEEN PROVING GROUND, MD 21005-5055

DISTRIBUTION UNLIMITED, MAY 2005.

DISPOSITION INSTRUCTIONS

Destroy this document when no longer needed. Do not return to the originator.

The use of trade names in this document does not constitute an official endorsement or approval of the use of such commercial hardware or software. This document may not be cited for purposes of advertisement.

REPORT DOCUMENTATION PAGE			Form Approved OMB No. 0704-0188		
<p>The public reporting burden for this collection of information is estimated to average 1 hour per response, including the time for reviewing instructions, searching existing data sources, gathering and maintaining the data needed, and completing and reviewing the collection of information. Send comments regarding this burden estimate or any other aspect of this collection of information, including suggestions for reducing the burden, to Department of Defense, Washington Headquarters Services, Directorate for Information Operations and Reports (0704-0188), 1215 Jefferson Davis Highway, Suite 1204, Arlington, VA 22202-4302. Respondents should be aware that notwithstanding any other provision of law, no person shall be subject to any penalty for failing to comply with a collection of information if it does not display a currently valid OMB control number.</p> <p>PLEASE DO NOT RETURN YOUR FORM TO THE ABOVE ADDRESS.</p>					
1. REPORT DATE (DD-MM-YYYY) May 2005		2. REPORT TYPE Final		3. DATES COVERED (From - To) 4, 5, and 8 December 2003	
4. TITLE AND SUBTITLE STANDARDIZED UXO TECHNOLOGY DEMONSTRATION SITE DESERT EXTREME SCORING RECORD NO. 171 (TETRA TECH FOSTER WHEELER, INC.)			5a. CONTRACT NUMBER		
			5b. GRANT NUMBER		
			5c. PROGRAM ELEMENT NUMBER		
			5d. PROJECT NUMBER 8-CO-160-UXO-021		
			5e. TASK NUMBER		
			5f. WORK UNIT NUMBER		
6. AUTHOR(S) Overbay, Larry The Standardized UXO Technology Demonstration Site Scoring Committee					
7. PERFORMING ORGANIZATION NAME(S) AND ADDRESS(ES) Commander U.S. Army Aberdeen Test Center ATTN: CSTE-STC-ATC-SL-E Aberdeen Proving Ground, MD 21005-5059			8. PERFORMING ORGANIZATION REPORT NUMBER ATC-8994		
9. SPONSORING/MONITORING AGENCY NAME(S) AND ADDRESS(ES) Commander U.S. Army Environmental Center ATTN: SFIM-AEC-ATT Aberdeen Proving Ground, MD 21005-5401			10. SPONSOR/MONITOR'S ACRONYM(S)		
			11. SPONSOR/MONITOR'S REPORT NUMBER(S) Same as item 8		
12. DISTRIBUTION/AVAILABILITY STATEMENT Distribution Unlimited.					
13. SUPPLEMENTARY NOTES					
14. ABSTRACT This scoring record documents the efforts of Tetra Tech Foster Wheeler, Inc., to detect and discriminate inter unexploded ordnance (UXO) utilizing the YPG Standardized UXO Technology Demonstration Site Desert Extreme. The scoring record was coordinated by Larry Overbay and the Standardized UXO Technology Demonstration Site Scoring Committee. Organizations on the committee include the U.S. Army Corps of Engineers, the Environmental Security Technology Certification Program, the Strategic Environmental Research and Development Program, the Institute for Defense Analysis, the U.S. Army Environmental Center, and the U.S. Army Aberdeen Test Center.					
15. SUBJECT TERMS Tetra Tech Foster Wheeler, Inc., UXO Standardized Site, YPG, Standardized UXO Technology Demonstration Site Program, Desert Extreme, EM61-MKII/Pushcart					
16. SECURITY CLASSIFICATION OF:			17. LIMITATION OF ABSTRACT UL	18. NUMBER OF PAGES	19a. NAME OF RESPONSIBLE PERSON
a. REPORT Unclassified	b. ABSTRACT Unclassified	c. THIS PAGE Unclassified			19b. TELEPHONE NUMBER (Include area code)

ACKNOWLEDGEMENTS

Authors:

Larry Overbay Jr.
Matthew Boutin
Military Environmental Technology Demonstration Center (METDC)
U.S. Army Aberdeen Test Center (ATC)
U.S. Army Aberdeen Proving Ground (APG)

Robert Archiable
EC 111, Limited Liability Company (LLC)
U.S. Army Yuma Proving Ground (YPG)

Christina McClung
Aberdeen Test and Support Services (ATSS)
Sverdrup Technology, Inc.
U.S. Army Aberdeen Proving Ground (APG)

Contributor:

George Robitaille
U.S. Army Environmental Center (AEC)
U.S. Army Aberdeen Proving Ground (APG)

TABLE OF CONTENTS

	<u>PAGE</u>
ACKNOWLEDGMENTS	i
 <u>SECTION 1. GENERAL INFORMATION</u> 	
1.1 BACKGROUND	1
1.2 SCORING OBJECTIVES	1
1.2.1 Scoring Methodology	1
1.2.2 Scoring Factors	3
1.3 STANDARD AND NONSTANDARD INERT ORDNANCE TARGETS	4
 <u>SECTION 2. DEMONSTRATION</u> 	
2.1 DEMONSTRATOR INFORMATION	5
2.1.1 Demonstrator Point of Contact (POC) and Address	5
2.1.2 System Description	5
2.1.3 Data Processing Description	7
2.1.4 Data Submission Format	8
2.1.5 Demonstrator Quality Assurance (QA) and Quality Control (QC)	8
2.1.6 Additional Records	10
2.2 YPG SITE INFORMATION	11
2.2.1 Location	11
2.2.2 Soil Type	11
2.2.3 Test Areas	12
 <u>SECTION 3. FIELD DATA</u> 	
3.1 DATE OF FIELD ACTIVITIES	13
3.2 AREAS TESTED/NUMBER OF HOURS	13
3.3 TEST CONDITIONS	13
3.3.1 Weather Conditions	13
3.3.2 Field Conditions	13
3.3.3 Soil Moisture	13
3.4 FIELD ACTIVITIES	14
3.4.1 Setup/Mobilization	14
3.4.2 Calibration	14
3.4.3 Downtime Occasions	14
3.4.4 Data Collection	14
3.4.5 Demobilization	14
3.5 PROCESSING TIME	15
3.6 DEMONSTRATOR'S FIELD PERSONNEL	15
3.7 DEMONSTRATOR'S FIELD SURVEYING METHOD	15
3.8 SUMMARY OF DAILY LOGS	15

SECTION 4. TECHNICAL PERFORMANCE RESULTS

	<u>PAGE</u>
4.1 ROC CURVES USING ALL ORDNANCE CATEGORIES	17
4.2 ROC CURVES USING ORDNANCE LARGER THAN 20 MM	18
4.3 PERFORMANCE SUMMARIES	20
4.4 EFFICIENCY, REJECTION RATES, AND TYPE CLASSIFICATION	21
4.5 LOCATION ACCURACY	22

SECTION 5. ON-SITE LABOR COSTS

SECTION 6. COMPARISON OF RESULTS TO OPEN FIELD DEMONSTRATION

6.1 SUMMARY OF RESULTS FROM OPEN FIELD DEMONSTRATION	25
6.2 COMPARISON OF ROC CURVES USING ALL ORDNANCE CATEGORIES	25
6.3 COMPARISON OF ROC CURVES USING ORDNANCE LARGER THAN 20 MM	27
6.4 STATISTICAL COMPARISONS	28

SECTION 7. APPENDIXES

A TERMS AND DEFINITIONS	A-1
B DAILY WEATHER LOGS	B-1
C SOIL MOISTURE	C-1
D DAILY ACTIVITY LOGS	D-1
E REFERENCES	E-1
F ABBREVIATIONS	F-1
G DISTRIBUTION LIST	G-1

SECTION 1. GENERAL INFORMATION

1.1 BACKGROUND

Technologies under development for the detection and discrimination of unexploded ordnance (UXO) require testing so that their performance can be characterized. To that end, Standardized Test Sites have been developed at Aberdeen Proving Ground (APG), Maryland and U.S. Army Yuma Proving Ground (YPG), Arizona. These test sites provide a diversity of geology, climate, terrain, and weather as well as diversity in ordnance and clutter. Testing at these sites is independently administered and analyzed by the government for the purposes of characterizing technologies, tracking performance with system development, comparing performance of different systems, and comparing performance in different environments.

The Standardized UXO Technology Demonstration Site Program is a multi-agency program spearheaded by the U.S. Army Environmental Center (AEC). The U.S. Army Aberdeen Test Center (ATC) and the U.S. Army Corps of Engineers Engineering Research and Development Center (ERDC) provide programmatic support. The program is being funded and supported by the Environmental Security Technology Certification Program (ESTCP), the Strategic Environmental Research and Development Program (SERDP) and the Army Environmental Quality Technology Program (EQT).

1.2 SCORING OBJECTIVES

The objective in the Standardized UXO Technology Demonstration Site Program is to evaluate the detection and discrimination capabilities of a given technology under various field and soil conditions. Inert munitions and clutter items are positioned in various orientations and depths in the ground.

The evaluation objectives are as follows:

- a. To determine detection and discrimination effectiveness under realistic scenarios that vary targets, geology, clutter, topography, and vegetation.
- b. To determine cost, time, and manpower requirements to operate the technology.
- c. To determine demonstrator's ability to analyze survey data in a timely manner and provide prioritized "Target Lists" with associated confidence levels.
- d. To provide independent site management to enable the collection of high quality, ground-truth, geo-referenced data for post-demonstration analysis.

1.2.1 Scoring Methodology

- a. The scoring of the demonstrator's performance is conducted in two stages. These two stages are termed the RESPONSE STAGE and DISCRIMINATION STAGE. For both stages, the probability of detection (P_d) and the false alarms are reported as receiver-operating

characteristic (ROC) curves. False alarms are divided into those anomalies that correspond to emplaced clutter items, measuring the probability of false positive (P_{fp}), and those that do not correspond to any known item, termed background alarms.

b. The RESPONSE STAGE scoring evaluates the ability of the system to detect emplaced targets without regard to ability to discriminate ordnance from other anomalies. For the blind grid RESPONSE STAGE, the demonstrator provides the scoring committee with a target response from each and every grid square along with a noise level below which target responses are deemed insufficient to warrant further investigation. This list is generated with minimal processing and, since a value is provided for every grid square, will include signals both above and below the system noise level.

c. The DISCRIMINATION STAGE evaluates the demonstrator's ability to correctly identify ordnance as such and to reject clutter. For the blind grid DISCRIMINATION STAGE, the demonstrator provides the scoring committee with the output of the algorithms applied in the discrimination-stage processing for each grid square. The values in this list are prioritized based on the demonstrator's determination that a grid square is likely to contain ordnance. Thus, higher output values are indicative of higher confidence that an ordnance item is present at the specified location. For digital signal processing, priority ranking is based on algorithm output. For other discrimination approaches, priority ranking is based on human (subjective) judgment. The demonstrator also specifies the threshold in the prioritized ranking that provides optimum performance, (i.e. that is expected to retain all detected ordnance and rejects the maximum amount of clutter).

d. The demonstrator is also scored on EFFICIENCY and REJECTION RATIO, which measures the effectiveness of the discrimination stage processing. The goal of discrimination is to retain the greatest number of ordnance detections from the anomaly list, while rejecting the maximum number of anomalies arising from non-ordnance items. EFFICIENCY measures the fraction of detected ordnance retained after discrimination, while the REJECTION RATIO measures the fraction of false alarms rejected. Both measures are defined relative to performance at the demonstrator-supplied level below which all responses are considered noise, i.e., the maximum ordnance detectable by the sensor and its accompanying false positive rate or background alarm rate.

e. Based on configuration of the ground truth at the standardized sites and the defined scoring methodology, there exists the possibility of having anomalies within overlapping halos and/or multiple anomalies within halos. In these cases, the following scoring logic is implemented:

(1) In situations where multiple anomalies exist within a single R_{halo} , the anomaly with the strongest response or highest ranking will be assigned to that particular ground truth item.

(2) For overlapping R_{halo} situations, ordnance has precedence over clutter. The anomaly with the strongest response or highest ranking that is closest to the center of a particular ground truth item gets assigned to that item. Remaining anomalies are retained until all matching is complete.

(3) Anomalies located within any R_{halo} that do not get associated with a particular ground truth item are thrown out and are not considered in the analysis.

f. All scoring factors are generated utilizing the Standardized UXO Probability and Plot Program, version 3.1.1.

1.2.2 Scoring Factors

Factors to be measured and evaluated as part of this demonstration include:

a. Response Stage ROC curves:

- (1) Probability of Detection (P_d^{res}).
- (2) Probability of False Positive ($P_{\text{fp}}^{\text{res}}$).
- (3) Background Alarm Rate (BAR^{res}) or Probability of Background Alarm ($P_{\text{BA}}^{\text{res}}$).

b. Discrimination Stage ROC curves:

- (1) Probability of Detection (P_d^{disc}).
- (2) Probability of False Positive ($P_{\text{fp}}^{\text{disc}}$).
- (3) Background Alarm Rate (BAR^{disc}) or Probability of Background Alarm ($P_{\text{BA}}^{\text{disc}}$).

c. Metrics:

- (1) Efficiency (E).
- (2) False Positive Rejection Rate (R_{fp}).
- (3) Background Alarm Rejection Rate (R_{BA}).

d. Other:

- (1) Probability of Detection by Size and Depth.
- (2) Classification by type (i.e., 20-, 40-, 105-mm, etc.).
- (3) Location accuracy.
- (4) Equipment setup, calibration time and corresponding man-hour requirements.
- (5) Survey time and corresponding man-hour requirements.

- (6) Reacquisition/resurvey time and man-hour requirements (if any).
- (7) Downtime due to system malfunctions and maintenance requirements.

1.3 STANDARD AND NONSTANDARD INERT ORDNANCE TARGETS

The standard and nonstandard ordnance items emplaced in the test areas are listed in Table 1. Standardized targets are members of a set of specific ordnance items that have identical properties to all other items in the set (caliber, configuration, size, weight, aspect ratio, material, filler, magnetic remanence, and nomenclature). Nonstandard targets are inert ordnance items having properties that differ from those in the set of standardized targets.

TABLE 1. INERT ORDNANCE TARGETS

Standard Type	Nonstandard (NS)
20-mm Projectile M55	20-mm Projectile M55
	20-mm Projectile M97
40-mm Grenades M385	40-mm Grenades M385
40-mm Projectile MKII Bodies	40-mm Projectile M813
BDU-28 Submunition	
BLU-26 Submunition	
M42 Submunition	
57-mm Projectile APC M86	
60-mm Mortar M49A3	60-mm Mortar (JPG)
	60-mm Mortar M49
2.75-inch Rocket M230	2.75-inch Rocket M230
	2.75-inch Rocket XM229
MK 118 ROCKEYE	
81-mm Mortar M374	81-mm Mortar (JPG)
	81-mm Mortar M374
105-mm HEAT Rounds M456	
105-mm Projectile M60	105-mm Projectile M60
155-mm Projectile M483A1	155-mm Projectile M483A
	500-lb Bomb

JPG = Jefferson Proving Ground

HEAT = high-explosive antitank

SECTION 2. DEMONSTRATION

2.1 DEMONSTRATOR INFORMATION

2.1.1 Demonstrator Point of Contact (POC) and Address

POC: Mike McGuire
(303) 980-3538
mmcguire@ttfwi.com

Address: Tetra Tech Foster Wheeler, Inc.
143 Union Blvd., Suite 1010
Lakewood, CO 80212

2.1.2 System Description (provided by demonstrator)

The Geonics EM61-MKII TDEM geophysical sensor, Arc Secon Constellation (CST), and Leica Series 1100 Robotic Total Station (RTS) laser positioning systems are proposed for APG. The EM61-MKII pushcart uses time domain technology to facilitate the detection and discrimination of metallic objects. Two coils, 100 by 100 cm, are oriented in a horizontal coplanar fashion and separated by a vertical distance of 40 cm. The system is utilized either on nonmagnetic wheels or as a man-portable unit (terrain-dependent) with the lower coil 40 cm above the ground surface. In general, a transmit pulse of uni-polar rectangular current (25-percent duty) of very short duration is applied to the lower coil. This primary current creates a primary magnetic field that induces eddy currents in nearby metal objects. The current flowing in the metal object creates a secondary magnetic field that is detected by both the lower and upper coils. The transmitter pulse frequency is 75 hertz (Hz), the pulse duration is 3.3 milliseconds, the peak power output is 50 watts, and the average power is 25 watts. Both coils possess zero decibels of gain.

The secondary magnetic field created by metal objects is sampled by the EM61-MKII electronics, which reside in the backpack, at times of 216 microseconds (μs), 366 μs , 660 μs on the bottom coil and 660 μs on the top coil after the turn-off of the transmit pulse. Digital data for these four individual time gates are integrated and recorded to a Juniper Allegro field computer at a rate of 12 Hz. The individual time gate data are converted into units of millivolts (mV), normalized, and gain is applied to each time gate by the EM61-MK2A software v1.22 on the Juniper Allegro field computer. Normalization and gain parameters are available in the EM61-MKII manual, Appendix B.

Safety hazards for the EM61-MKII equipment include electromagnetic radiation. The electromagnetic field of the system could potentially detonate some types of specialized ordnance. The Hazards of Electromagnetic Radiation to Ordnance (HERO) distance for the EM61-MKII pushcart is 20 cm. The Army Corps of Engineers (ACE) recommends a ground clearance of at least 40 cm when electrically fused ordnance is present.

The CST consists of four laser transmitters and a field computer for logging the position data via wireless modem. Four Trimble Spectra Precision LS920 Laser Transmitters are positioned in a diamond or square geometry over 1/2 to 1 acre depending upon the tree density. The transmitters are leveled, and an automatic routine calculates the relative X-Y-Z- plane between the transmitters to a tolerance of 1 inch or less. A laser detector “wand” (i.e., receiver) is centered over the EM61-MKII coils on a Tetra Tech Foster Wheeler (TtFW) designed fiberglass doghouse. The detector wand receives the laser pulses from the four transmitters simultaneously, and computes a position based on the known position of the laser transmitters. Only two of the laser transmitters are necessary to compute a reliable position to a relative accuracy of approximately 1 inch. The position data are updated at 2 to 3 Hz and sent via wireless modem to the field computer for storage. The Leica Series 1100 RTS consists of a laser-based total station survey instrument (transmitter), prism (receiver), and RCS 100 remote control. The transmitter is positioned over a ground position point of known location, and an X-Y-Z Cartesian coordinate system is defined by occupying an additional known ground position with the receiver prism. The receiver prism is mounted on a TtFW doghouse centered over the EM61-MKII coils, and the RTS automatically tracks the prism at distances of several thousand feet to an accuracy of approximately 1 inch. Position data for the receiver prism are updated at a rate of 3 to 4 Hz and stored on a Personal Computer Memory Card International Association (PCMCIA) card located on the robotic total station.

EM61-MKII Pushcart and RTS Positioning System

The EM61-MKII pushcart configured as a one man push-pull with wheels for repeatability testing at Fort McClellan, Alabama and in open areas with flat, smooth surfaces at APG (fig. 1).



Figure 1. Demonstrator's system, the EM61-MKII pushcart.

The positioning sensors mounted on the doghouse are differential Global Positioning System (DGPS) antenna (not to be used), Ultrasonic Ranging and Data System (USRADS) crystal (not to be used), and RTS prism. This setup was used to directly compare the accuracy and repeatability of all three of the stated positioning systems for the ACE-Huntsville Division.

2.1.3 Data Processing Description (provided by demonstrator)

In the densely wooded area, the CST laser-based positioning system was integrated with the EM61-MKII geophysical sensor, and used as a two man tethered system, or in areas where the surface terrain was judged to be smooth, as a one-man pushcart. The four transmitters were organized in a diamond or square geometry over an area of 1/2 to 1 acre in size depending upon the area-specific vegetation density. At least two of the laser transmitter locations were surveyed with the RTS instrument (located at a known control point) in order to position the data in the requested coordinate system.

The RTS laser based system was used in conjunction with the EM61-MKII in the areas outside of the dense woods. The survey area was divided into two-acre plots (grids), and a wood survey lathe was positioned at predefined grid corners using the RTS.

For this demonstration, a transect spacing of no more than 2 to 2.5 feet was required when using the proposed geophysical sensor to detect and discriminate objects as small as 20-mm projectiles.

Several fiberglass tape measures were laid out perpendicular to the direction of the data acquisition transects at intervals of approximately 50 to 100 feet. Specially modified traffic cones were positioned along the intended transect at the measuring tape locations; the data acquisition crew used these cones as waypoints. When the crew reached a waypoint, the sensor operator moved the cone sideways to the next intended transect (2 to 2.5 ft to the side), and continued navigating to the next waypoint (cone) along the current transect. The acquisition crew proceeded a minimum of 10 feet outside of the intended survey area, reversed direction, and proceeded along the next intended transect. When an obstacle was encountered, the sensor operator paused for 1 second, stepped around the obstacle, and paused for an additional second. In this manner, the highest quality spatial data was obtained around obstacles. In areas where rough terrain was present (moguls, slopes, etc.) pin flags were employed rather than traffic cones, at intervals of 25 feet.

A Juniper Allegro ruggedized data collector recorded the EM61-MKII data at 12 Hz. At a normal acquisition speed of 3 feet per second, samples along each acquisition transect were produced at intervals of approximately 3 to 4 inches. Geonics software DAT61MK2 v1.30 was used to convert the EM61-MKII data to units of mV with a corresponding time stamp for each record.

The CST positioning information was recorded via wireless modem to a binary file at 2 to 3 Hz to a field computer along with a corresponding time stamp for each recorded position. The positioning and EM61-MKII signal data were merged with the software Vulproc v1.5 developed by TtFW.

Position data were collected with the RTS at a rate of 3 to 4 Hz and stored, along with a time stamp, on a PCMCIA card in the RTS. The positioning and EM61-MKII signal data were merged with the software RTSproc v2.2 developed by TtFW.

The data were leveled (background subtraction as determined by mode of data) during processing and are output as an American Standard Code for Information Interchange (ASCII) file (X, Y, Z1, Z2, Z3, Z4, Z5) that contained the state planar coordinates of each measurement location in feet, EM61-MKII signal intensity for each time gate in millivolts, and a quality identifier for each recorded position (number 1-6, based on standard deviation).

The raw data for all three instruments (EM61, CTS, RTS) was uploaded to a PCMCIA card, transferred to the in-field processing computer, and backed up on compact disk, read-only memory (CD-ROM).

2.1.4 Data Submission Format

Data were submitted for scoring in accordance with data submission protocols outlined in the Standardized UXO Technology Demonstration Site Handbook. These submitted data are not included in this report in order to protect ground truth information.

2.1.5 Demonstrator Quality Assurance (QA) and Quality Control (QC) (provided by demonstrator)

Overview of QC. Field personnel, data processors, and data interpreters implement our QC program in a consistent fashion. In general, our geophysics QC program consists of a battery of pre-project tests, and once the project has started, a test regimen is applied for each acquisition session (usually 2 to 3 times per day, not just at the beginning of the day, or each week). The test regimen includes functional checks to ensure the position and geophysical sensor instrumentation is functioning properly prior to and at the end of each data acquisition session; processing checks to ensure the data collected are of sufficient quality and quantity to meet the project objectives, and interpretation checks to ensure the processed data are representative of the site conditions.

Pre-project tests included functional checks to ensure the position and geophysical sensor instrumentation was operating within their defined parameters. For all of our projects we perform a geophysical prove-out (GPO) or verification of detection system (VDS); during this project these tasks were replaced by the calibration lane data. Specific pre-project tests included the following:

- 15-minute Static tests for each EM61-MKII system.
- Cable integrity tests for each EM61-MKII system.
- Manufacturer suggested functional checks for CST and RTS positioning systems.
- Time-stamp relative accuracy tests for position and EM61-MKII systems.
- PCMCIA card integrity checks.

Specific functional checks during the data acquisition program were slightly different depending upon the positioning system used; however, generic functional checks included the following:

- Acquisition personnel metal check (ensure no metal on acquisition personnel).
- Static position system check (accuracy and repeatability of position).
- Static geophysical sensor check (repeatability of measurements, influence of ambient noise).
- Static geophysical sensor check with test item (repeatability and comparability of measurements with metal present).
- Kinematics geophysical sensor check with test item (repeatability and comparability of measurements with sensor in motion).
- Repeatability of overall data (re-survey of portion of the survey area during each data acquisition session).
- Occupation of survey monuments to ensure comparability, accuracy, and repeatability of RTS and CST positioning systems.

Overview of QA. The QA program designed by TtFW geophysicists was applied to ensure the QC system functioned properly. The QA procedures applied during the processing phase of the project were performed each day in the field to ensure the integrity of the data. Data that were not of sufficient quality and quantity to meet the project objectives were documented and recollected. Procedural checks during the processing of the data include the following:

- Evaluation of the static position and EM61-MKII data. EM61-MKII static noise above a predefined threshold was documented and a root cause analysis was performed prior to collecting additional data.
- Evaluation of the kinematics geophysical sensor check. These data allowed the processor to qualitatively and quantitatively monitor the noise level and repeatability of the data over a standard item, as well as ensure the data were merged correctly using the time-stamp information (i.e., the data contain no time or position shift; also known as lag).
- Visual examination of the repeatability and track path. Data were mathematically interpolated so that gaps present in the data showed up as a white color in the color-coded image of the data. These areas were documented and provided to the field crew for additional data collection, when necessary.
- Repeat data for each acquisition session were assessed in terms of the adequacy of the background removal operation.
- Corner stake locations for the survey grid were compared to known survey data and verified.

- Sample density along transects was verified through statistics.
- EM61-MKII measurement values outside of the range -5000 to +5000 mV were documented and compared to the site cultural features map.

TtFW geophysicists developed internal software to meet some of the needs during merging, processing, and interpretation of the data. QA measures applied during the interpretation of the data were the following:

- Targets selected interactively by the user were compared to those selected automatically by EM61int v6.7 (TtFW) and/or UX Detect (Oasis Montaj). This process ensured anomalies that met a certain criteria for selections were not missed by the interpreter and thus included on the dig sheet.
- Depths were calculated using two independent methods. These depths were compared and the most accurate solution obtained. Depths greater than 3.5 feet were documented and the characteristics of these anomalies (shape, number of transects detected on, signal intensity) were interactively assessed by the interpreter using the color-coded image and 1D profile data.
- Several aboveground metal features (e.g., fence posts, monitoring wells, etc.) were selected from each acquisition session for reacquisition by field personnel to verify accuracy of the interpreted position coordinates.
- The position and EM61-MKII data were compared to the site features map (e.g., above ground cultural features are documented-should be variance in track path).
- Interpreted data characteristics were compared to the known responses acquired during the initial test program (e.g., calibration lane).

2.1.6 Additional Records

The following record(s) by this vendor can be accessed via the Internet as MicroSoft Word documents at www.uxotestsites.org. The counterparts to this report are the Blind Grid, Scoring Record No. 168, and the Open Field, Scoring Record No. 169.

2.2 YPG SITE INFORMATION

2.2.1 Location

YPG is located adjacent to the Colorado River in the Sonoran Desert. The UXO Standardized Test Site is located south of Pole Line Road and east of the Countermine Testing and Training Range. The Open Field range, Calibration Grid, Blind Grid, Mogul area, and Desert Extreme area comprise the 350 by 500-meter general test site area. The open field site is the largest of the test sites and measures approximately 200 by 350 meters. To the east of the open field range are the calibration and blind test grids that measure 30 by 40 meters and 40 by 40 meters, respectively. South of the Open Field is the 135- by 80-meter Mogul area consisting of a sequence of man-made depressions. The Desert Extreme area is located southeast of the open field site and has dimensions of 50 by 100 meters. The Desert Extreme area, covered with desert-type vegetation, is used to test the performance of different sensor platforms in a more severe desert conditions/environment.

2.2.2 Soil Type

Soil samples were collected at the YPG UXO Standardized Test Site by ERDC to characterize the shallow subsurface (< 3 m). Both surface grab samples and continuous soil borings were acquired. The soils were subjected to several laboratory analyses, including sieve/hydrometer, water content, magnetic susceptibility, dielectric permittivity, X-ray diffraction, and visual description.

There are two soil complexes present within the site, Riverbend-Carrizo and Cristobal-Gunsight. The Riverbend-Carrizo complex is comprised of mixed stream alluvium, whereas the Cristobal-Gunsight complex is derived from fan alluvium. The Cristobal-Gunsight complex covers the majority of the site. Most of the soil samples were classified as either a sandy loam or loamy sand, with most samples containing gravel-size particles. All samples had a measured water content less than 7 percent, except for two that contained 11-percent moisture. The majority of soil samples had water content between 1 to 2 percent. Samples containing more than 3 percent were generally deeper than 1 meter.

An X-ray diffraction analysis on four soil samples indicated a basic mineralogy of quartz, calcite, mica, feldspar, magnetite, and some clay. The presence of magnetite imparted a moderate magnetic susceptibility, with volume susceptibilities generally greater than 100 by 10⁻⁵ SI.

For more details concerning the soil properties at the YPG test site, go to www.uxotestsites.org on the web to view the entire soils description report.

2.2.3 Test Areas

A description of the test site areas at YPG is included in Table 2.

TABLE 2. TEST SITE AREAS

Area	Description
Calibration Grid	Contains the 15 standard ordnance items buried in six positions at various angles and depths to allow demonstrator equipment calibration.
Blind Grid	Contains 400 grid cells in a 0.16-hectare (0.39-acre) site. The center of each grid cell contains ordnance, clutter, or nothing.
Open Field	A 4-hectare (10-acre) site containing open areas, dips, ruts, and obstructions, including vegetation.
Desert Extreme	A 1.23-acre area consisting of a sequence of man-made depressions, covered with desert-type vegetation.

SECTION 3. FIELD DATA

3.1 DATE OF FIELD ACTIVITIES (4, 5 and 8 December 2003)

3.2 AREAS TESTED/NUMBER OF HOURS

Areas tested and total number of hours operated at each site are summarized in Table 3.

TABLE 3. AREAS TESTED AND NUMBER OF HOURS

Area	Number of Hours
Calibration Lanes	3.45
Desert Extreme	11.35

3.3 TEST CONDITIONS

3.3.1 Weather Conditions

A YPG weather station located approximately one mile west of the test site was used to record average temperature and precipitation on a half hour basis for each day of operation. The temperatures listed in Table 4 represent the average temperature during field operations from 0700 to 1700 hours while precipitation data represents a daily total amount of rainfall. Hourly weather logs used to generate this summary are provided in Appendix B.

TABLE 4. TEMPERATURE/PRECIPITATION DATA SUMMARY

Date, 2003	Average Temperature, °F	Total Daily Precipitation, in.
December 4	64.1	0.00
December 5	63.8	0.00
December 8	63.7	0.00

3.3.2 Field Conditions

The field was dry and the weather was warm throughout the survey.

3.3.3 Soil Moisture

Three soil probes were placed at various locations within the site to capture soil moisture data: Blind Grid, Calibration, Open Field, and Mogul areas. Measurements were collected in percent moisture and were taken twice daily (morning and afternoon) from five different soil depths (1 to 6 in., 6 to 12 in., 12 to 24 in., 24 to 36 in., and 36 to 48 in.) from each probe. Soil moisture logs are included in Appendix C.

3.4 FIELD ACTIVITIES

3.4.1 Setup/Mobilization

These activities included initial mobilization and daily equipment preparation and break down. A two person crew took 1-hour and 55 minutes to perform the initial setup and mobilization. There was 4 hours and 39 minutes of daily equipment preparation and end of the day equipment break down lasted 35 minutes.

3.4.2 Calibration

TtFW spent a total of 3 hours and 27 minutes in the calibration lanes, 1-hour and 55 minutes of which was spent collecting data.

3.4.3 Downtime Occasions

Occasions of downtime are grouped into five categories: equipment/data checks or equipment maintenance, equipment failure and repair, weather, Demonstration Site issues, or breaks/lunch. All downtime is included for the purposes of calculating labor costs (section 5) except for downtime due to Demonstration Site issues. Demonstration Site issues, while noted in the Daily Log, are considered non-chargeable downtime for the purposes of calculating labor costs and are not discussed. Breaks and lunches are discussed in this section and billed to the total Site Survey area.

3.4.3.1 Equipment/data checks, maintenance. Equipment data checks and maintenance activities accounted for 27 minutes of site usage time. These activities included changing out batteries and routine data checks to ensure the data was being properly recorded/collected. TtFW spent an additional 1-hour and 25 minutes for breaks and lunches.

3.4.3.2 Equipment failure or repair. No time was needed to resolve equipment failures that occurred while surveying the Desert Extreme.

3.4.3.3 Weather. No weather delays occurred during the survey.

3.4.4 Data Collection

TtFW spent a total time of 11 hours and 21 minutes in the Desert Extreme area, 4 hours and 15 minutes was spent collecting data.

3.4.5 Demobilization

The TtFW survey crew went on to conducted a full demonstration of the site. Therefore, demobilization did not occur until 8 December 2003. On that day, it took the crew 2 hours and 20 minutes to break down and pack up their equipment.

3.5 PROCESSING TIME

TtFW submitted the raw data from the demonstration activities on the last day of the demonstration, as required. The scoring submittal data was also provided within the required 30-day timeframe.

3.6 DEMONSTRATOR'S FIELD PERSONNEL

- Tim Deignan: Project Geophysicist
- Mike McGuire: Geophysicist

3.7 DEMONSTRATOR'S FIELD SURVEYING METHOD

TtFW collected data in a linear fashion and a east to west direction.

3.8 SUMMARY OF DAILY LOGS

Daily logs capture all field activities during this demonstration and are located in Appendix D. Activities pertinent to this specific demonstration are indicated in highlighted text.

SECTION 4. TECHNICAL PERFORMANCE RESULTS

4.1 ROC CURVES USING ALL ORDNANCE CATEGORIES

Figure 2 shows the probability of detection for the response stage (P_d^{res}) and the discrimination stage (P_d^{disc}) versus their respective probability of false positive. Figure 3 shows both probabilities plotted against their respective background alarm rate. Both figures use horizontal lines to illustrate the performance of the demonstrator at two demonstrator-specified points: at the system noise level for the response stage, representing the point below which targets are not considered detectable, and at the demonstrator's recommended threshold level for the discrimination stage, defining the subset of targets the demonstrator would recommend digging based on discrimination. Note that all points have been rounded to protect the ground truth.

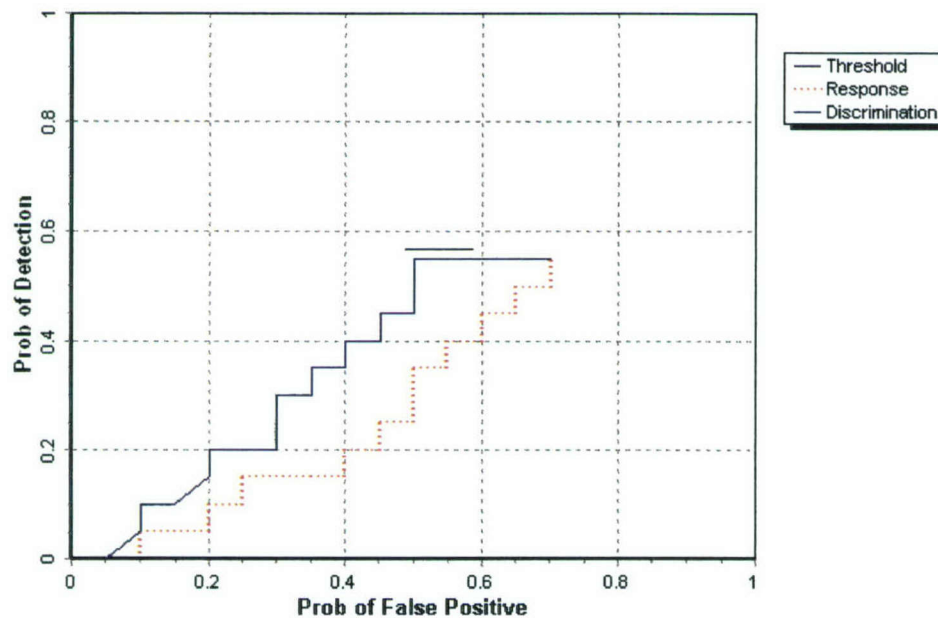


Figure 2. EM61-MKII/pushcart desert extreme probability of detection for response and discrimination stages versus their respective probability of false positive over all ordnance categories combined.

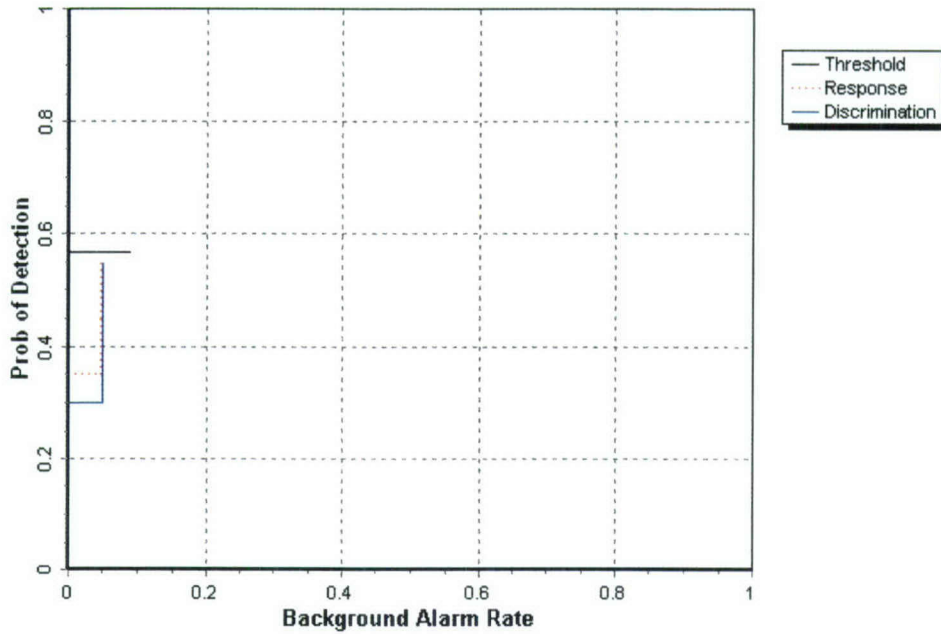


Figure 3. EM61-MKII/pushcart desert extreme probability of detection for response and discrimination stages versus their respective background alarm rate over all ordnance categories combined.

4.2 ROC CURVES USING ORDNANCE LARGER THAN 20 MM

Figure 4 shows the probability of detection for the response stage (P_d^{res}) and the discrimination stage (P_d^{disc}) versus their respective probability of false positive when only targets larger than 20 mm are scored. Figure 5 shows both probabilities plotted against their respective background alarm rate. Both figures use horizontal lines to illustrate the performance of the demonstrator at two demonstrator-specified points: at the system noise level for the response stage, representing the point below which targets are not considered detectable, and at the demonstrator's recommended threshold level for the discrimination stage, defining the subset of targets the demonstrator would recommend digging based on discrimination. Note that all points have been rounded to protect the ground truth.

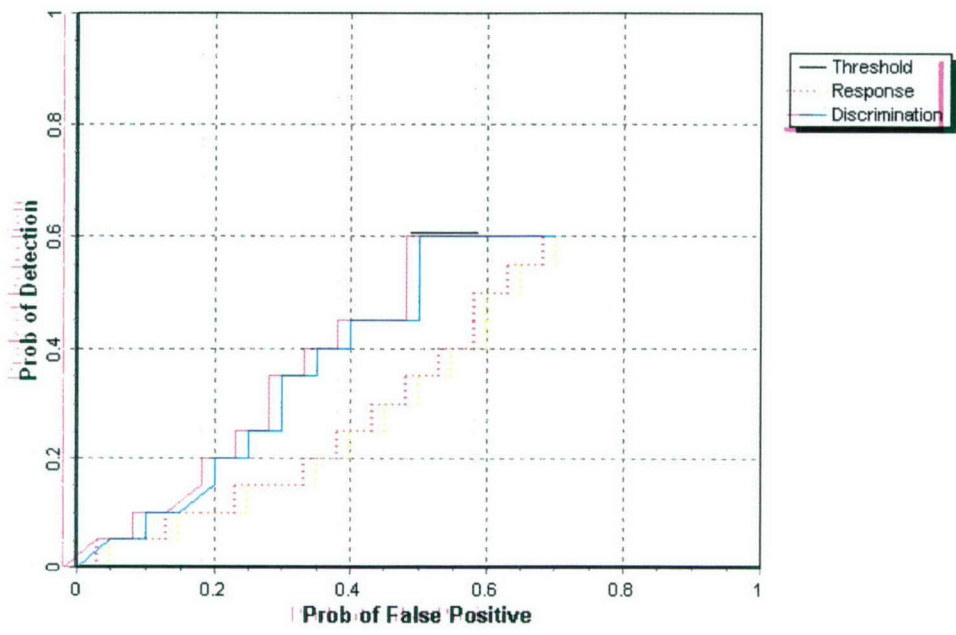


Figure 4. EM61-MKII/pushcart desert extreme probability of detection for response and discrimination stages versus their respective probability of false positive for all ordnance larger than 20 mm.

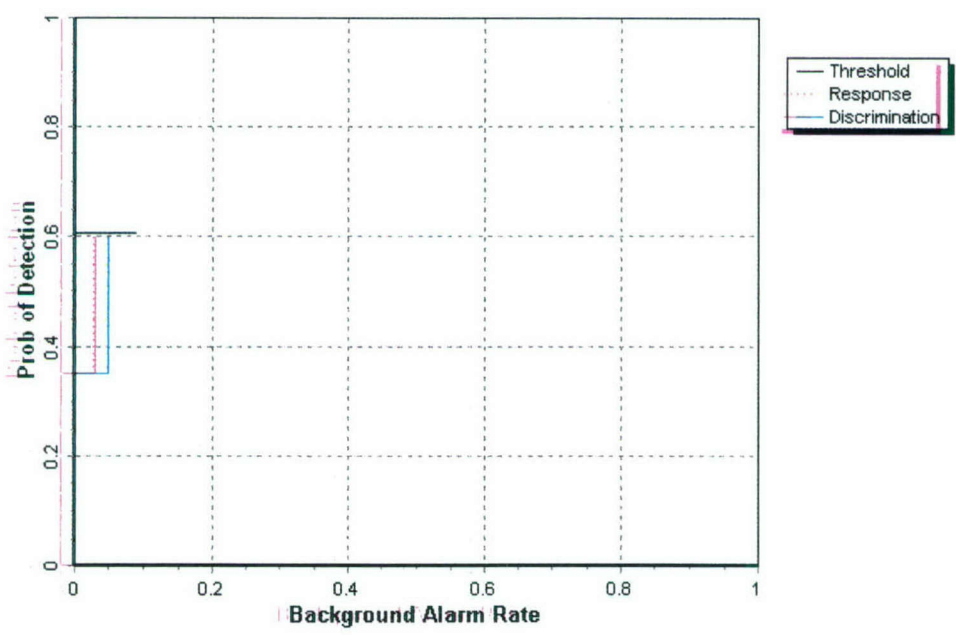


Figure 5. EM61-MKII/pushcart desert extreme probability of detection for response and discrimination stages versus their respective background alarm rate for all ordnance larger than 20 mm.

4.3 PERFORMANCE SUMMARIES

Results for the Desert Extreme test broken out by size, depth and nonstandard ordnance are presented in Table 5 (for cost results, see section 5). Results by size and depth include both standard and nonstandard ordnance. The results by size show how well the demonstrator did at detecting/discriminating ordnance of a certain caliber range (see app A for size definitions). The results are relative to the number of ordnance items emplaced. Depth is measured from the geometric center of anomalies.

The RESPONSE STAGE results are derived from the list of anomalies above the demonstrator-provided noise level. The results for the DISCRIMINATION STAGE are derived from the demonstrator's recommended threshold for optimizing UXO field cleanup by minimizing false digs and maximizing ordnance recovery. The lower 90 percent confidence limit on probability of detection and P_{fp} was calculated assuming that the number of detections and false positives are binomially distributed random variables. All results in Table 5 have been rounded to protect the ground truth. However, lower confidence limits were calculated using actual results.

TABLE 5. SUMMARY OF DESERT EXTREME RESULTS FOR EM61-MKII/PUSHCART

Metric	Overall	Standard	Nonstandard	By Size			By Depth, m		
				Small	Medium	Large	< 0.3	0.3 to <1	≥ 1
RESPONSE STAGE									
P_d	0.55	0.55	0.60	0.50	0.65	0.70	0.50	0.70	0.60
P_d Low 90% Conf	0.51	0.48	0.48	0.39	0.54	0.54	0.43	0.57	0.25
P_d Upper 90% Conf	0.63	0.64	0.68	0.56	0.75	0.86	0.58	0.78	0.89
P_{fp}	0.70	-	-	-	-	-	0.65	0.75	0.00
P_{fp} Low 90% Conf	0.65	-	-	-	-	-	0.63	0.67	0.00
P_{fp} Upper 90% Conf	0.73	-	-	-	-	-	0.72	0.82	0.90
BAR	0.05	-	-	-	-	-	-	-	-
DISCRIMINATION STAGE									
P_d	0.55	0.55	0.60	0.50	0.65	0.70	0.50	0.70	0.60
P_d Low 90% Conf	0.51	0.48	0.48	0.39	0.54	0.54	0.43	0.57	0.25
P_d Upper 90% Conf	0.63	0.64	0.68	0.56	0.75	0.86	0.58	0.78	0.89
P_{fp}	0.55	-	-	-	-	-	0.50	0.70	0.00
P_{fp} Low 90% Conf	0.50	-	-	-	-	-	0.44	0.60	0.00
P_{fp} Upper 90% Conf	0.58	-	-	-	-	-	0.54	0.76	0.90
BAR	0.05	-	-	-	-	-	-	-	-

Response Stage Noise Level: 1.70

Recommended Discrimination Stage Threshold: 5.00

Note: The recommended discrimination stage threshold values are provided by the demonstrator.

4.4 EFFICIENCY, REJECTION RATES, AND TYPE CLASSIFICATION

Efficiency and rejection rates are calculated to quantify the discrimination ability at specific points of interest on the ROC curve: (1) at the point where no decrease in P_d is suffered (i.e., the efficiency is by definition equal to one) and (2) at the operator selected threshold. These values are reported in Table 6.

TABLE 6. EFFICIENCY AND REJECTION RATES

	Efficiency (E)	False Positive Rejection Rate	Background Alarm Rejection Rate
At Operating Point	1.00	0.22	0.22
With No Loss of P_d	1.00	0.22	0.22

At the demonstrator's recommended setting, the ordnance items that were detected and correctly discriminated were further scored on whether their correct type could be identified (table 7). Correct type examples include "20-mm projectile, 105-mm HEAT Projectile, and 2.75-inch Rocket". A list of the standard type declaration required for each ordnance item was provided to demonstrators prior to testing. For example, the standard type for the three example items are 20mmP, 105H, and 2.75in, respectively.

TABLE 7. CORRECT TYPE CLASSIFICATION OF TARGETS CORRECTLY DISCRIMINATED AS UXO

Size	Percentage Correct
Small	40.6
Medium	23.1
Large	38.5
Overall	33.8

4.5 LOCATION ACCURACY

The mean location error and standard deviations appear in Table 8. These calculations are based on average missed depth for ordnance correctly identified in the discrimination stage. Depths are measured from the closest point of the ordnance to the surface. For the Blind Grid, only depth errors are calculated, since (X, Y) positions are known to be the centers of each grid square.

**TABLE 8. MEAN LOCATION ERROR AND
STANDARD DEVIATION (M)**

	Mean	Standard Deviation
Northing	-0.04	0.19
Easting	0.01	0.17
Depth	-0.13	0.16

SECTION 5. ON-SITE LABOR COSTS

A standardized estimate for labor costs associated with this effort was calculated as follows: the first person at the test site was designated “supervisor”, the second person was designated “data analyst”, and the third and following personnel were considered “field support”. Standardized hourly labor rates were charged by title: supervisor at \$95.00/hour, data analyst at \$57.00/hour, and field support at \$28.50/hour.

Government representatives monitored on-site activity. All on-site activities were grouped into one of ten categories: initial setup/mobilization, daily setup/stop, calibration, collecting data, downtime due to break/lunch, downtime due to equipment failure, downtime due to equipment/data checks or maintenance, downtime due to weather, downtime due to demonstration site issue, or demobilization. See Appendix D for the daily activity log. See section 3.4 for a summary of field activities.

The standardized cost estimate associated with the labor needed to perform the field activities is presented in Table 9. Note that calibration time includes time spent in the Calibration Lanes as well as field calibrations. “Site survey time” includes daily setup/stop time, collecting data, breaks/lunch, downtime due to equipment/data checks or maintenance, downtime due to failure, and downtime due to weather.

TABLE 9. ON-SITE LABOR COSTS

	No. People	Hourly Wage	Hours	Cost
Initial Setup				
Supervisor	1	\$95.00	1.92	\$182.40
Data Analyst	1	57.00	1.92	109.44
Field Support	0	28.50	1.92	0.00
SubTotal				\$291.84
Calibration				
Supervisor	1	\$95.00	3.45	\$327.75
Data Analyst	1	57.00	3.45	196.65
Field Support	0	28.50	3.45	0.00
SubTotal				\$524.40
Site Survey				
Supervisor	1	\$95.00	11.35	\$1,078.25
Data Analyst	1	57.00	11.35	646.95
Field Support	0	28.50	11.35	0.00
SubTotal				\$1,725.20

See notes at end of table.

TABLE 9 (CONT'D)

	No. People	Hourly Wage	Hours	Cost
Demobilization				
Supervisor	1	\$95.00	2.33	\$221.35
Data Analyst	1	57.00	2.33	132.81
Field Support	0	28.50	2.33	0.00
Subtotal				\$354.16
Total				\$2,895.60

Notes: Calibration time includes time spent in the Calibration Lanes as well as calibration before each data run.

Site Survey time includes daily setup/stop time, collecting data, breaks/lunch, downtime due to system maintenance, failure, and weather.

SECTION 6. COMPARISON OF RESULTS TO OPEN FIELD DEMONSTRATION

6.1 SUMMARY OF RESULTS FROM OPEN FIELD DEMONSTRATION

Table 10 shows the results from Open Field survey conducted prior to surveying the Desert Extreme during the same site visit in December of 2003. For more details on the Open Field survey results reference section 2.1.6.

**TABLE 10. SUMMARY OF OPEN FIELD RESULTS FOR THE
EM61-MKII/PUSHCART**

Metric	Overall	Standard	Nonstandard	By Size			By Depth, m		
				Small	Medium	Large	< 0.3	0.3 to <1	>= 1
RESPONSE STAGE									
P_d	0.75	0.75	0.75	0.70	0.80	0.90	0.75	0.75	0.75
P_d Low 90% Conf	0.74	0.74	0.71	0.68	0.73	0.85	0.73	0.72	0.62
P_d Upper 90% Conf	0.79	0.80	0.79	0.75	0.82	0.94	0.80	0.81	0.82
P_{fp}	0.70	-	-	-	-	-	0.70	0.75	0.40
P_{fp} Low 90% Conf	0.69	-	-	-	-	-	0.68	0.72	0.19
P_{fp} Upper 90% Conf	0.73	-	-	-	-	-	0.72	0.78	0.65
BAR	0.00	-	-	-	-	-	-	-	-
DISCRIMINATION STAGE									
P_d	0.75	0.75	0.70	0.70	0.75	0.90	0.75	0.75	0.75
P_d Low 90% Conf	0.72	0.73	0.68	0.65	0.71	0.85	0.71	0.71	0.62
P_d Upper 90% Conf	0.77	0.80	0.76	0.73	0.81	0.94	0.78	0.80	0.82
P_{fp}	0.55	-	-	-	-	-	0.50	0.65	0.40
P_{fp} Low 90% Conf	0.53	-	-	-	-	-	0.49	0.62	0.19
P_{fp} Upper 90% Conf	0.57	-	-	-	-	-	0.53	0.69	0.65
BAR	0.00	-	-	-	-	-	-	-	-

6.2 COMPARISON OF ROC CURVES USING ALL ORDNANCE CATEGORIES

Figure 6 shows P_d^{res} versus the respective P_{fp} over all ordnance categories. Figure 7 shows P_d^{disc} versus their respective P_{fp} over all ordnance categories. Figure 7 uses horizontal lines to illustrate the performance of the demonstrator at the recommended discrimination threshold levels, defining the subset of targets the demonstrator would recommend digging based on discrimination.

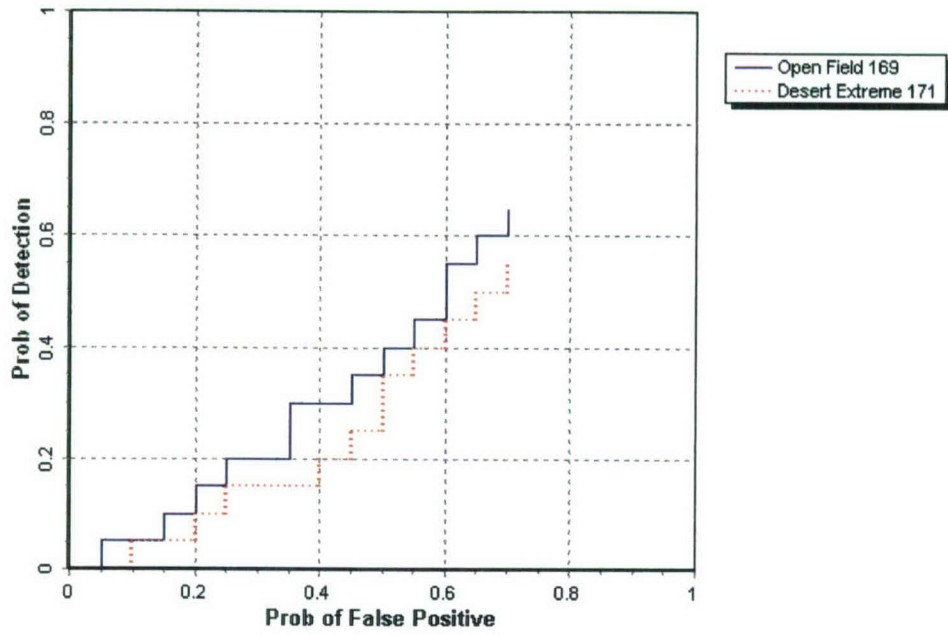


Figure 6. EM61-MKII/pushcart P_d^{res} stages versus the respective P_{fp} over all ordnance categories combined.

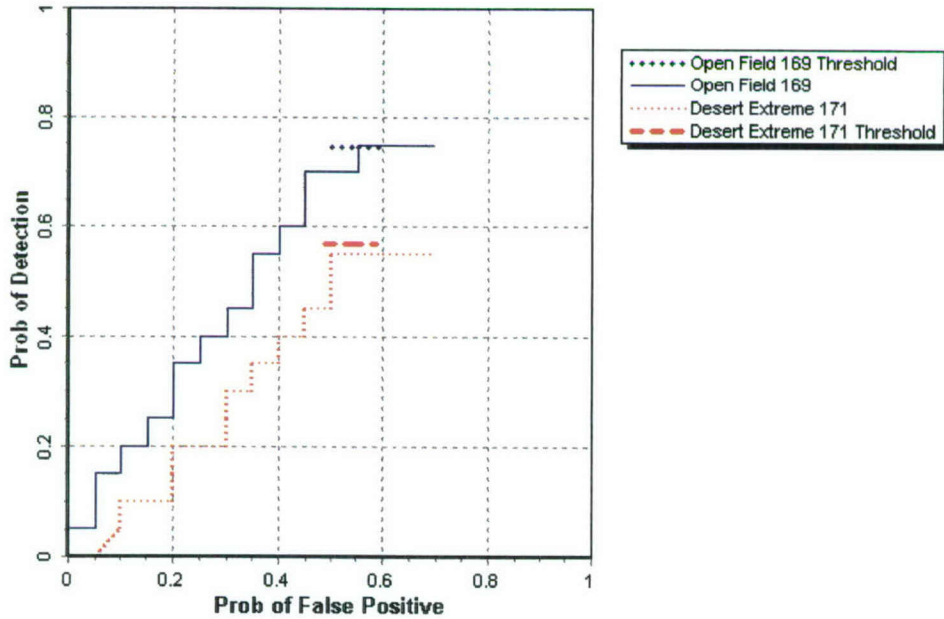


Figure 7. EM61-MKII/pushcart P_d^{disc} versus the respective P_{fp} over all ordnance categories combined.

6.3 COMPARISON OF ROC CURVES USING ORDNANCE LARGER THAN 20 MM

Figure 8 shows the P_d^{res} versus the respective probability of P_{fp} over ordnance larger than 20 mm. Figure 9 shows P_d^{disc} versus the respective P_{fp} over ordnance larger than 20 mm. Figure 9 uses horizontal lines to illustrate the performance of the demonstrator at the recommended discrimination threshold levels, defining the subset of targets the demonstrator would recommend digging based on discrimination.

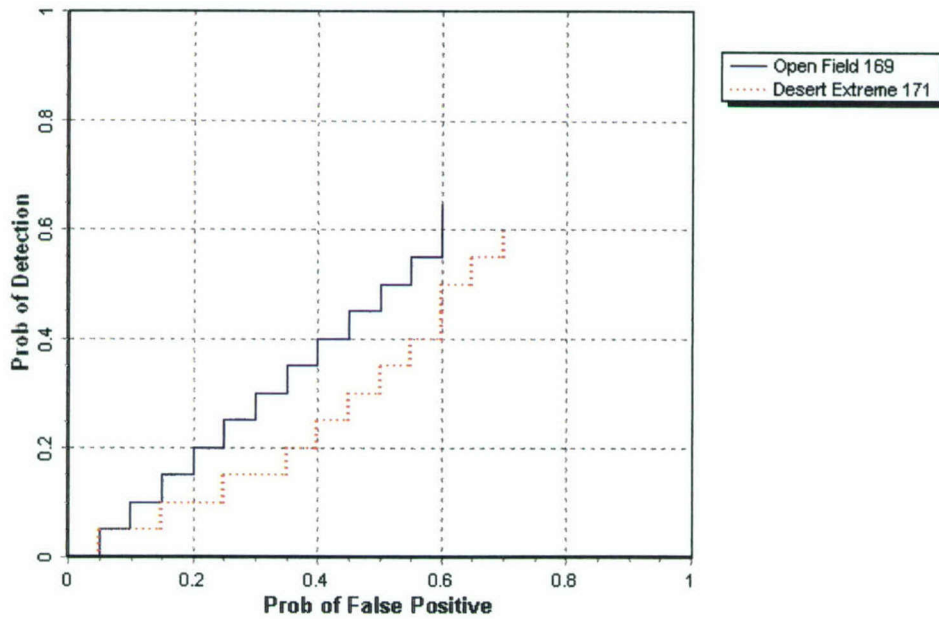


Figure 8. EM61-MKII/pushcart P_d^{res} versus the respective P_{fp} for ordnance larger than 20 mm.

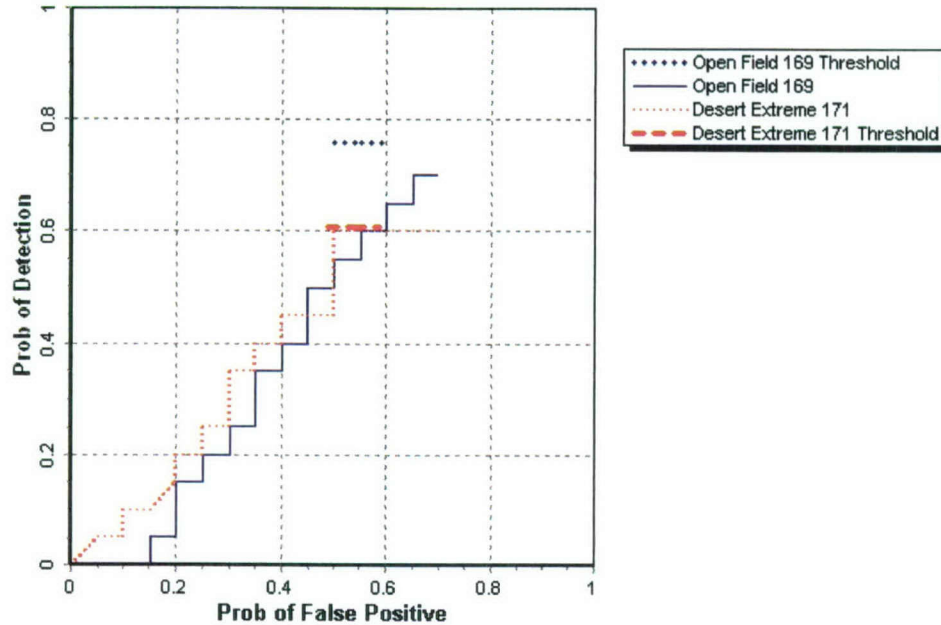


Figure 9. EM61-MKII/pushcart P_d^{disc} versus the respective P_{fp} for ordnance larger than 20 mm.

6.4 STATISTICAL COMPARISONS

Statistical Chi-square significance tests were used to compare results between the Open Field and Desert Extreme scenarios. The intent of the comparison is to determine if the feature introduced in each scenario has a degrading effect on the performance of the sensor system. However, any modifications in the UXO sensor system during the test, like changes in the processing or changes in the selection of the operating threshold, will also contribute to performance differences.

The Chi-square test for comparison between ratios was used at a significance level of 0.05 to compare Open Field to Desert Extreme with regard to P_d^{res} , P_d^{disc} , P_{fp}^{res} and P_{fp}^{disc} , Efficiency and Rejection Rate. These results are presented in Table 11. A detailed explanation and example of the Chi-square application is located in Appendix A.

TABLE 11. CHI-SQUARE RESULTS – OPEN FIELD VERSUS DESERT EXTREME

Metric	Small	Medium	Large	Overall
P_d^{res}	Significant	Not Significant	Significant	Significant
P_d^{disc}	Significant	Not Significant	Significant	Significant
P_{fp}^{res}	Not Significant	Not Significant	Not Significant	Not Significant
P_{fp}^{disc}	-	-	-	Not Significant
Efficiency	-	-	-	Not Significant
Rejection rate	-	-	-	Not Significant

SECTION 7. APPENDIXES

APPENDIX A. TERMS AND DEFINITIONS

GENERAL DEFINITIONS

Anomaly: Location of a system response deemed to warrant further investigation by the demonstrator for consideration as an emplaced ordnance item.

Detection: An anomaly location that is within R_{halo} of an emplaced ordnance item.

Emplaced Ordnance: An ordnance item buried by the government at a specified location in the test site.

Emplaced Clutter: A clutter item (i.e., non-ordnance item) buried by the government at a specified location in the test site.

R_{halo} : A pre-determined radius about the periphery of an emplaced item (clutter or ordnance) within which a location identified by the demonstrator as being of interest is considered to be a response from that item. If multiple declarations lie within R_{halo} of any item (clutter or ordnance), the declaration with the highest signal output within the R_{halo} will be utilized. For the purpose of this program, a circular halo 0.5 meters in radius will be placed around the center of the object for all clutter and ordnance items less than 0.6 meters in length. When ordnance items are longer than 0.6 meters, the halo becomes an ellipse where the minor axis remains 1 meter and the major axis is equal to the length of the ordnance plus 1 meter.

Small Ordnance: Caliber of ordnance less than or equal to 40 mm (includes 20-mm projectile, 40-mm projectile, submunitions BLU-26, BLU-63, and M42).

Medium Ordnance: Caliber of ordnance greater than 40 mm and less than or equal to 81 mm (includes 57-mm projectile, 60-mm mortar, 2.75 in. Rocket, MK118 Rockeye, 81-mm mortar).

Large Ordnance: Caliber of ordnance greater than 81 mm (includes 105-mm HEAT, 105-mm projectile, 155-mm projectile, 500-pound bomb).

Shallow: Items buried less than 0.3 meter below ground surface.

Medium: Items buried greater than or equal to 0.3 meter and less than 1 meter below ground surface.

Deep: Items buried greater than or equal to 1 meter below ground surface.

Response Stage Noise Level: The level that represents the point below which anomalies are not considered detectable. Demonstrators are required to provide the recommended noise level for the Blind Grid test area.

Discrimination Stage Threshold: The demonstrator selected threshold level that they believe provides optimum performance of the system by retaining all detectable ordnance and rejecting the maximum amount of clutter. This level defines the subset of anomalies the demonstrator would recommend digging based on discrimination.

Binomially Distributed Random Variable: A random variable of the type which has only two possible outcomes, say success and failure, is repeated for n independent trials with the probability p of success and the probability $1-p$ of failure being the same for each trial. The number of successes x observed in the n trials is an estimate of p and is considered to be a binomially distributed random variable.

RESPONSE AND DISCRIMINATION STAGE DATA

The scoring of the demonstrator's performance is conducted in two stages. These two stages are termed the RESPONSE STAGE and DISCRIMINATION STAGE. For both stages, the probability of detection (P_d) and the false alarms are reported as receiver operating characteristic (ROC) curves. False alarms are divided into those anomalies that correspond to emplaced clutter items, measuring the probability of false positive (P_{fp}) and those that do not correspond to any known item, termed background alarms.

The RESPONSE STAGE scoring evaluates the ability of the system to detect emplaced targets without regard to ability to discriminate ordnance from other anomalies. For the RESPONSE STAGE, the demonstrator provides the scoring committee with the location and signal strength of all anomalies that the demonstrator has deemed sufficient to warrant further investigation and/or processing as potential emplaced ordnance items. This list is generated with minimal processing (e.g., this list will include all signals above the system noise threshold). As such, it represents the most inclusive list of anomalies.

The DISCRIMINATION STAGE evaluates the demonstrator's ability to correctly identify ordnance as such, and to reject clutter. For the same locations as in the RESPONSE STAGE anomaly list, the DISCRIMINATION STAGE list contains the output of the algorithms applied in the discrimination-stage processing. This list is prioritized based on the demonstrator's determination that an anomaly location is likely to contain ordnance. Thus, higher output values are indicative of higher confidence that an ordnance item is present at the specified location. For electronic signal processing, priority ranking is based on algorithm output. For other systems, priority ranking is based on human judgment. The demonstrator also selects the threshold that the demonstrator believes will provide "optimum" system performance, (i.e., that retains all the detected ordnance and rejects the maximum amount of clutter).

Note: The two lists provided by the demonstrator contain identical numbers of potential target locations. They differ only in the priority ranking of the declarations.

RESPONSE STAGE DEFINITIONS

Response Stage Probability of Detection (P_d^{res}): $P_d^{\text{res}} = (\text{No. of response-stage detections}) / (\text{No. of emplaced ordnance in the test site})$.

Response Stage False Positive (fp^{res}): An anomaly location that is within R_{halo} of an emplaced clutter item.

Response Stage Probability of False Positive (P_{fp}^{res}): $P_{fp}^{\text{res}} = (\text{No. of response-stage false positives}) / (\text{No. of emplaced clutter items})$.

Response Stage Background Alarm (ba^{res}): An anomaly in a blind grid cell that contains neither emplaced ordnance nor an emplaced clutter item. An anomaly location in the open field or scenarios that is outside R_{halo} of any emplaced ordnance or emplaced clutter item.

Response Stage Probability of Background Alarm (P_{ba}^{res}): Blind Grid only: $P_{ba}^{\text{res}} = (\text{No. of response-stage background alarms}) / (\text{No. of empty grid locations})$.

Response Stage Background Alarm Rate (BAR^{res}): Open Field only: $BAR^{\text{res}} = (\text{No. of response-stage background alarms}) / (\text{arbitrary constant})$.

Note that the quantities P_d^{res} , P_{fp}^{res} , P_{ba}^{res} , and BAR^{res} are functions of t^{res} , the threshold applied to the response-stage signal strength. These quantities can therefore be written as $P_d^{\text{res}}(t^{\text{res}})$, $P_{fp}^{\text{res}}(t^{\text{res}})$, $P_{ba}^{\text{res}}(t^{\text{res}})$, and $BAR^{\text{res}}(t^{\text{res}})$.

DISCRIMINATION STAGE DEFINITIONS

Discrimination: The application of a signal processing algorithm or human judgment to response-stage data that discriminates ordnance from clutter. Discrimination should identify anomalies that the demonstrator has high confidence correspond to ordnance, as well as those that the demonstrator has high confidence correspond to nonordnance or background returns. The former should be ranked with highest priority and the latter with lowest.

Discrimination Stage Probability of Detection (P_d^{disc}): $P_d^{\text{disc}} = (\text{No. of discrimination-stage detections}) / (\text{No. of emplaced ordnance in the test site})$.

Discrimination Stage False Positive (fp^{disc}): An anomaly location that is within R_{halo} of an emplaced clutter item.

Discrimination Stage Probability of False Positive (P_{fp}^{disc}): $P_{fp}^{\text{disc}} = (\text{No. of discrimination stage false positives}) / (\text{No. of emplaced clutter items})$.

Discrimination Stage Background Alarm (ba^{disc}): An anomaly in a blind grid cell that contains neither emplaced ordnance nor an emplaced clutter item. An anomaly location in the open field or scenarios that is outside R_{halo} of any emplaced ordnance or emplaced clutter item.

Discrimination Stage Probability of Background Alarm (P_{ba}^{disc}): $P_{ba}^{disc} = (\text{No. of discrimination-stage background alarms})/(\text{No. of empty grid locations})$.

Discrimination Stage Background Alarm Rate (BAR^{disc}): $BAR^{disc} = (\text{No. of discrimination-stage background alarms})/(\text{arbitrary constant})$.

Note that the quantities P_d^{disc} , P_{fp}^{disc} , P_{ba}^{disc} , and BAR^{disc} are functions of t^{disc} , the threshold applied to the discrimination-stage signal strength. These quantities can therefore be written as $P_d^{disc}(t^{disc})$, $P_{fp}^{disc}(t^{disc})$, $P_{ba}^{disc}(t^{disc})$, and $BAR^{disc}(t^{disc})$.

RECEIVER-OPERATING CHARACTERISTIC (ROC) CURVES

ROC curves at both the response and discrimination stages can be constructed based on the above definitions. The ROC curves plot the relationship between P_d versus P_{fp} and P_d versus BAR or P_{ba} as the threshold applied to the signal strength is varied from its minimum (t_{min}) to its maximum (t_{max}) value.¹ Figure A-1 shows how P_d versus P_{fp} and P_d versus BAR are combined into ROC curves. Note that the “res” and “disc” superscripts have been suppressed from all the variables for clarity.

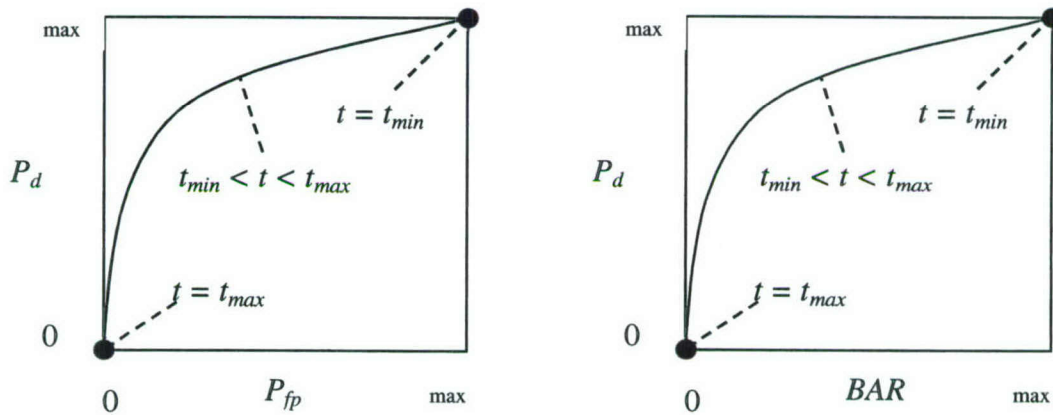


Figure A-1. ROC curves for open field testing. Each curve applies to both the response and discrimination stages.

¹Strictly speaking, ROC curves plot the P_d versus P_{ba} over a pre-determined and fixed number of detection opportunities (some of the opportunities are located over ordnance and others are located over clutter or blank spots). In an open field scenario, each system suppresses its signal strength reports until some bare-minimum signal response is received by the system. Consequently, the open field ROC curves do not have information from low signal-output locations, and, furthermore, different contractors report their signals over a different set of locations on the ground. These ROC curves are thus not true to the strict definition of ROC curves as defined in textbooks on detection theory. Note, however, that the ROC curves obtained in the Blind Grid test sites are true ROC curves.

METRICS TO CHARACTERIZE THE DISCRIMINATION STAGE

The demonstrator is also scored on efficiency and rejection ratio, which measure the effectiveness of the discrimination stage processing. The goal of discrimination is to retain the greatest number of ordnance detections from the anomaly list, while rejecting the maximum number of anomalies arising from nonordnance items. The efficiency measures the amount of detected ordnance retained by the discrimination, while the rejection ratio measures the fraction of false alarms rejected. Both measures are defined relative to the entire response list, i.e., the maximum ordnance detectable by the sensor and its accompanying false positive rate or background alarm rate.

Efficiency (E): $E = P_d^{disc}(t^{disc})/P_d^{res}(t_{min}^{res})$; Measures (at a threshold of interest), the degree to which the maximum theoretical detection performance of the sensor system (as determined by the response stage t_{min}) is preserved after application of discrimination techniques. Efficiency is a number between 0 and 1. An efficiency of 1 implies that all of the ordnance initially detected in the response stage was retained at the specified threshold in the discrimination stage, t^{disc} .

False Positive Rejection Rate (R_{fp}): $R_{fp} = 1 - [P_{fp}^{disc}(t^{disc})/P_{fp}^{res}(t_{min}^{res})]$; Measures (at a threshold of interest), the degree to which the sensor system's false positive performance is improved over the maximum false positive performance (as determined by the response stage t_{min}). The rejection rate is a number between 0 and 1. A rejection rate of 1 implies that all misplaced clutter initially detected in the response stage were correctly rejected at the specified threshold in the discrimination stage.

Background Alarm Rejection Rate (R_{ba}):

Blind Grid: $R_{ba} = 1 - [P_{ba}^{disc}(t^{disc})/P_{ba}^{res}(t_{min}^{res})]$.

Open Field: $R_{ba} = 1 - [BAR^{disc}(t^{disc})/BAR^{res}(t_{min}^{res})]$.

Measures the degree to which the discrimination stage correctly rejects background alarms initially detected in the response stage. The rejection rate is a number between 0 and 1. A rejection rate of 1 implies that all background alarms initially detected in the response stage were rejected at the specified threshold in the discrimination stage.

CHI-SQUARE COMPARISON EXPLANATION:

The Chi-square test for differences in probabilities (or 2 x 2 contingency table) is used to analyze two samples drawn from two different populations to see if both populations have the same or different proportions of elements in a certain category. More specifically, two random samples are drawn, one from each population, to test the null hypothesis that the probability of event A (some specified event) is the same for both populations (ref 3).

A 2 x 2 contingency table is used in the Standardized UXO Technology Demonstration Site Program to determine if there is reason to believe that the proportion of ordnance correctly detected/discriminated by demonstrator X's system is significantly degraded by the more challenging terrain feature introduced. The test statistic of the 2 x 2 contingency table is the

Chi-square distribution with one degree of freedom. Since an association between the more challenging terrain feature and relatively degraded performance is sought, a one-sided test is performed. A significance level of 0.05 is chosen which sets a critical decision limit of 2.71 from the Chi-square distribution with one degree of freedom. It is a critical decision limit because if the test statistic calculated from the data exceeds this value, the two proportions tested will be considered significantly different. If the test statistic calculated from the data is less than this value, the two proportions tested will be considered not significantly different.

An exception must be applied when either a 0 or 100 percent success rate occurs in the sample data. The Chi-square test cannot be used in these instances. Instead, Fischer's test is used and the critical decision limit for one-sided tests is the chosen significance level, which in this case is 0.05. With Fischer's test, if the test statistic is less than the critical value, the proportions are considered to be significantly different.

Standardized UXO Technology Demonstration Site examples, where blind grid results are compared to those from the open field and open field results are compared to those from one of the scenarios, follow. It should be noted that a significant result does not prove a cause and effect relationship exists between the two populations of interest; however, it does serve as a tool to indicate that one data set has experienced a degradation in system performance at a large enough level than can be accounted for merely by chance or random variation. Note also that a result that is not significant indicates that there is not enough evidence to declare that anything more than chance or random variation within the same population is at work between the two data sets being compared.

Demonstrator X achieves the following overall results after surveying each of the three progressively more difficult areas using the same system (results indicate the number of ordnance detected divided by the number of ordnance emplaced):

	Blind Grid	Open Field	Moguls
P_d^{res}	100/100 = 1.0	8/10 = .80	20/33 = .61
P_d^{disc}	80/100 = 0.80	6/10 = .60	8/33 = .24

P_d^{res} : BLIND GRID versus OPEN FIELD. Using the example data above to compare probabilities of detection in the response stage, all 100 ordnance out of 100 emplaced ordnance items were detected in the blind grid while 8 ordnance out of 10 emplaced were detected in the open field. Fischer's test must be used since a 100 percent success rate occurs in the data. Fischer's test uses the four input values to calculate a test statistic of 0.0075 that is compared against the critical value of 0.05. Since the test statistic is less than the critical value, the smaller response stage detection rate (0.80) is considered to be significantly less at the 0.05 level of significance. While a significant result does not prove a cause and effect relationship exists between the change in survey area and degradation in performance, it does indicate that the detection ability of demonstrator X's system seems to have been degraded in the open field relative to results from the blind grid using the same system.

P_d^{disc} : BLIND GRID versus OPEN FIELD. Using the example data above to compare probabilities of detection in the discrimination stage, 80 out of 100 emplaced ordnance items were correctly discriminated as ordnance in blind grid testing while 6 ordnance out of 10 emplaced were correctly discriminated as such in open field-testing. Those four values are used to calculate a test statistic of 1.12. Since the test statistic is less than the critical value of 2.71, the two discrimination stage detection rates are considered to be not significantly different at the 0.05 level of significance.

P_d^{res} : OPEN FIELD versus MOGULS. Using the example data above to compare probabilities of detection in the response stage, 8 out of 10 and 20 out of 33 are used to calculate a test statistic of 0.56. Since the test statistic is less than the critical value of 2.71, the two response stage detection rates are considered to be not significantly different at the 0.05 level of significance.

P_d^{disc} : OPEN FIELD versus MOGULS. Using the example data above to compare probabilities of detection in the discrimination stage, 6 out of 10 and 8 out of 33 are used to calculate a test statistic of 2.98. Since the test statistic is greater than the critical value of 2.71, the smaller discrimination stage detection rate is considered to be significantly less at the 0.05 level of significance. While a significant result does not prove a cause and effect relationship exists between the change in survey area and degradation in performance, it does indicate that the ability of demonstrator X to correctly discriminate seems to have been degraded by the mogul terrain relative to results from the flat open field using the same system.

APPENDIX B. DAILY WEATHER LOGS

TABLE B-1. WEATHER LOG

Date	Time, EDST	Temperature, °F	Relative Humidity, %	Precipitation, in.
12/01/2003	15:00	73.9	15	0.00
12/01/2003	16:00	72.6	16	0.00
12/01/2003	17:00	71.0	14	0.00
12/01/2003	18:00	67.4	18	0.00
12/01/2003	19:00	64.2	23	0.00
12/01/2003	20:00	60.2	24	0.00
12/01/2003	21:00	57.3	27	0.00
12/01/2003	22:00	55.5	29	0.00
12/01/2003	23:00	55.4	29	0.00
12/01/2003	24:00	53.6	32	0.00
12/02/2003	1:00	51.9	33	0.00
12/02/2003	02:00	51.3	36	0.00
12/02/2003	03:00	50.0	37	0.00
12/02/2003	04:00	51.5	37	0.00
12/02/2003	05:00	52.4	38	0.00
12/02/2003	06:00	51.6	38	0.00
12/02/2003	07:00	50.1	38	0.00
12/02/2003	08:00	49.3	40	0.00
12/02/2003	09:00	50.1	35	0.00
12/02/2003	10:00	56.3	28	0.00
12/02/2003	11:00	60.3	20	0.00
12/02/2003	12:00	66.4	17	0.00
12/02/2003	13:00	71.0	15	0.00
12/02/2003	14:00	74.6	14	0.00
12/02/2003	15:00	75.3	16	0.00
12/02/2003	16:00	76.4	16	0.00
12/02/2003	17:00	77.6	15	0.00
12/02/2003	18:00	71.2	17	0.00
12/02/2003	19:00	67.8	22	0.00
12/02/2003	20:00	65.1	25	0.00
12/02/2003	21:00	64.0	27	0.00
12/02/2003	22:00	62.5	28	0.00
12/02/2003	23:00	57.3	28	0.00
12/02/2003	24:00	55.1	31	0.00
12/03/2003	01:00	52.0	37	0.00
12/03/2003	02:00	51.6	37	0.00
12/03/2003	03:00	50.4	37	0.00
12/03/2003	04:00	51.4	34	0.00
12/03/2003	05:00	52.2	33	0.00
12/03/2003	06:00	48.4	39	0.00
12/03/2003	07:00	44.8	46	0.00
12/03/2003	08:00	43.7	50	0.00

TABLE B-1 (CONT'D)

Date	Time, EDST	Temperature, °F	Relative Humidity, %	Precipitation, in.
12/03/2003	09:00	50.7	39	0.00
12/03/2003	10:00	58.8	28	0.00
12/03/2003	11:00	63.7	23	0.00
12/03/2003	12:00	69.0	19	0.00
12/03/2003	13:00	73.6	15	0.00
12/03/2003	14:00	76.0	14	0.00
12/03/2003	15:00	77.2	13	0.00
12/03/2003	16:00	77.0	13	0.00
12/03/2003	17:00	75.2	14	0.00
12/03/2003	18:00	69.6	17	0.00
12/03/2003	19:00	67.0	19	0.00
12/03/2003	20:00	65.5	19	0.00
12/03/2003	21:00	63.0	21	0.00
12/03/2003	22:00	62.0	21	0.00
12/03/2003	23:00	58.6	24	0.00
12/03/2003	24:00	56.1	27	0.00
12/03/2003	01:00	54.8	28	0.00
12/04/2003	02:00	50.7	31	0.00
12/04/2003	03:00	48.6	34	0.00
12/04/2003	04:00	46.0	37	0.00
12/04/2003	05:00	45.3	38	0.00
12/04/2003	06:00	43.8	42	0.00
12/04/2003	07:00	45.5	38	0.00
12/04/2003	08:00	45.8	40	0.00
12/04/2003	09:00	52.0	32	0.00
12/04/2003	10:00	58.0	27	0.00
12/04/2003	11:00	64.2	21	0.00
12/04/2003	12:00	67.8	18	0.00
12/04/2003	13:00	72.0	15	0.00
12/04/2003	14:00	73.2	14	0.00
12/04/2003	15:00	75.4	14	0.00
12/04/2003	16:00	76.1	13	0.00
12/04/2003	17:00	74.8	13	0.00
12/04/2003	18:00	70.0	16	0.00
12/04/2003	19:00	67.0	18	0.00
12/04/2003	20:00	64.2	20	0.00
12/04/2003	21:00	63.3	20	0.00
12/04/2003	22:00	59.0	23	0.00
12/04/2003	23:00	56.3	25	0.00
12/04/2003	24:00	58.1	23	0.00
12/05/2003	01:00	49.8	33	0.00
12/05/2003	02:00	49.2	33	0.00
12/05/2003	03:00	49.2	35	0.00
12/05/2003	04:00	48.3	37	0.00

TABLE B-1 (CONT'D)

Date	Time, EDST	Temperature, °F	Relative Humidity, %	Precipitation, in.
12/05/2003	05:00	46.7	37	0.00
12/05/2003	06:00	48.2	36	0.00
12/05/2003	07:00	46.0	40	0.00
12/05/2003	08:00	47.6	38	0.00
12/05/2003	09:00	52.3	32	0.00
12/05/2003	10:00	58.1	26	0.00
12/05/2003	11:00	63.3	22	0.00
12/05/2003	12:00	64.4	18	0.00
12/05/2003	13:00	71.0	15	0.00
12/05/2003	14:00	73.4	14	0.00
12/05/2003	15:00	75.2	13	0.00
12/05/2003	16:00	76.1	13	0.00
12/05/2003	17:00	75.3	13	0.00
12/05/2003	18:00	70.0	17	0.00
12/05/2003	19:00	63.3	23	0.00
12/05/2003	20:00	61.0	24	0.00
12/05/2003	21:00	57.2	30	0.00
12/05/2003	22:00	56.5	30	0.00
12/05/2003	23:00	56.8	29	0.00
12/05/2003	24:00	54.3	31	0.00
12/08/2003	01:00	60.3	63	0.00
12/08/2003	02:00	60.4	64	0.00
12/08/2003	03:00	59.3	66	0.00
12/08/2003	04:00	58.4	70	0.00
12/08/2003	05:00	55.6	75	0.00
12/08/2003	06:00	55.6	76	0.00
12/08/2003	07:00	54.7	78	0.00
12/08/2003	08:00	53.4	81	0.00
12/08/2003	09:00	57.5	67	0.00
12/08/2003	10:00	61.7	36	0.00
12/08/2003	11:00	63.8	30	0.00
12/08/2003	12:00	65.8	28	0.00
12/08/2003	13:00	67.4	26	0.00
12/08/2003	14:00	68.5	23	0.00
12/08/2003	15:00	69.8	18	0.00
12/08/2003	16:00	70.0	14	0.00
12/08/2003	17:00	68.1	15	0.00
12/08/2003	18:00	65.3	16	0.00
12/08/2003	19:00	62.2	18	0.00
12/08/2003	20:00	60.3	18	0.00
12/08/2003	21:00	57.0	28	0.00
12/08/2003	22:00	52.0	25	0.00
12/08/2003	23:00	50.9	25	0.00
12/08/2003	24:00	51.4	22	0.00

APPENDIX C. SOIL MOISTURE

Daily Soil Moisture Logs

Demonstrator: TETRA TEK (EM61A & EM61B)

Date: DECEMBER 1, 2003

Times: 0900 hours, 1305 hours

Probe Location:	Layer, in.	AM Reading, %	PM Reading, %
Calibration Area	0 to 6	1.8	1.8
	6 to 12	2.4	2.4
	12 to 24	3.7	3.7
	24 to 36	3.6	3.6
	36 to 48	4.0	4.0
Mogul Area	0 to 6	1.7	1.7
	6 to 12	2.2	2.2
	12 to 24	3.5	3.5
	24 to 36	3.9	3.9
	36 to 48	3.9	3.9
Desert Extreme Area	0 to 6	1.6	1.6
	6 to 12	2.2	2.2
	12 to 24	3.4	3.4
	24 to 36	3.9	3.9
	36 to 48	4.1	4.1

Date: DECEMBER 2, 2003

Times: 0710 hours, 1308 hours

Probe Location:	Layer, in.	AM Reading, %	PM Reading, %
Calibration Area	0 to 6	1.8	1.8
	6 to 12	2.4	2.4
	12 to 24	3.7	3.7
	24 to 36	3.6	3.6
	36 to 48	4.0	4.0
Mogul Area	0 to 6	1.7	1.7
	6 to 12	2.2	2.2
	12 to 24	3.5	3.5
	24 to 36	3.9	3.9
	36 to 48	3.9	3.9
Desert Extreme Area	0 to 6	1.6	1.6
	6 to 12	2.2	2.2
	12 to 24	3.4	3.4
	24 to 36	3.9	3.9
	36 to 48	4.1	4.1

Date: DECEMBER 3, 2003
Times: 0720 hours, 1302 hours

Probe Location:	Layer, in.	AM Reading, %	PM Reading, %
Calibration Area	0 to 6	1.8	1.8
	6 to 12	2.4	2.4
	12 to 24	3.7	3.7
	24 to 36	3.6	3.6
	36 to 48	4.0	4.0
Mogul Area	0 to 6	1.6	1.6
	6 to 12	2.1	2.1
	12 to 24	3.5	3.5
	24 to 36	3.9	3.9
	36 to 48	3.9	3.9
Desert Extreme Area	0 to 6	1.6	1.6
	6 to 12	2.2	2.2
	12 to 24	3.4	3.4
	24 to 36	3.9	3.9
	36 to 48	4.1	4.1

Date: DECEMBER 4, 2003
Times: 0715 hours, 1300 hours

Probe Location:	Layer, in.	AM Reading, %	PM Reading, %
Calibration Area	0 to 6	1.8	1.8
	6 to 12	2.4	2.4
	12 to 24	3.7	3.7
	24 to 36	3.6	3.6
	36 to 48	3.9	3.9
Mogul Area	0 to 6	1.6	1.6
	6 to 12	2.2	2.2
	12 to 24	3.5	3.5
	24 to 36	3.9	3.9
	36 to 48	3.9	3.9
Desert Extreme Area	0 to 6	1.6	1.6
	6 to 12	2.3	2.3
	12 to 24	3.3	3.3
	24 to 36	3.9	3.9
	36 to 48	4.1	4.1

Date: DECEMBER 5, 2003
Times: 0704 hours, 1300 hours

Probe Location:	Layer, in.	AM Reading, %	PM Reading, %
Calibration Area	0 to 6	1.8	1.8
	6 to 12	2.4	2.4
	12 to 24	3.7	3.7
	24 to 36	3.6	3.6
	36 to 48	4.0	4.0
Mogul Area	0 to 6	1.7	1.7
	6 to 12	2.2	2.2
	12 to 24	3.5	3.5
	24 to 36	3.9	3.9
	36 to 48	3.9	3.9
Desert Extreme Area	0 to 6	1.6	1.6
	6 to 12	2.2	2.2
	12 to 24	3.3	3.3
	24 to 36	3.9	3.9
	36 to 48	4.1	4.1

Date: DECEMBER 8, 2003
Times: 0706 hours, 1040 hours

Probe Location:	Layer, in.	AM Reading, %	PM Reading, %
Calibration Area	0 to 6	1.8	1.8
	6 to 12	2.4	2.4
	12 to 24	3.7	3.7
	24 to 36	3.6	3.6
	36 to 48	4.0	4.0
Mogul Area	0 to 6	1.6	1.6
	6 to 12	2.1	2.1
	12 to 24	3.6	3.6
	24 to 36	3.9	3.9
	36 to 48	3.9	3.9
Desert Extreme Area	0 to 6	1.6	1.6
	6 to 12	2.1	2.3
	12 to 24	3.4	3.3
	24 to 36	3.9	3.9
	36 to 48	3.9	4.1

APPENDIX D. DAILY LOG ACTIVITIES

Date	No. of People	Area Tested	Status Start Time	Status Stop Time	Duration, min	Operational Status	Operational Status Comments	Track Method	Track Method = Other Explain	Pattern	Field Conditions	
TEAM 2												
12/01/2003	2	CALIBRATION LANES	0815	1150	115	INITIAL SETUP	SETUP/MOBILIZATION	NA	NA	NA	SUNNY	COOL
12/01/2003	2	CALIBRATION LANES	1150	1230	40	COLLECT DATA	COLLECT DATA BIDIRECTIONAL NORTH TO SOUTH	GPS	NA	LINEAR	SUNNY	COOL
12/01/2003	2	CALIBRATION LANES	1230	1240	10	SETUP/DAILY START/STOP/CALIBRATION	CALIBRATION	NA	NA	NA	SUNNY	COOL
12/01/2003	2	CALIBRATION LANES	1240	1315	35	SETUP/DAILY START/STOP/CALIBRATION	SETUP/MOBILIZATION	NA	NA	NA	SUNNY	WARM
12/01/2003	2	CALIBRATION LANES	1315	1345	30	COLLECT DATA	COLLECT DATA BIDIRECTIONAL EAST TO WEST	GPS	NA	LINEAR	SUNNY	WARM
12/01/2003	2	CALIBRATION LANES	1345	1355	10	SETUP/DAILY START/STOP/CALIBRATION	CALIBRATION	NA	NA	NA	SUNNY	WARM
12/01/2003	2	BLIND TEST GRID	1355	1445	50	SETUP/DAILY START/STOP/CALIBRATION	SETUP/MOBILIZATION	NA	NA	NA	SUNNY	WARM
12/01/2003	2	BLIND TEST GRID	1445	1455	10	COLLECT DATA	COLLECT DATA BIDIRECTIONAL NORTH TO SOUTH	GPS	NA	LINEAR	SUNNY	WARM
12/01/2003	2	BLIND TEST GRID	1455	1515	20	DOWNTIME DUE TO EQUIP MAIN/CHECK	CHANGE BATTERY	NA	NA	NA	SUNNY	WARM
12/01/2003	2	BLIND TEST GRID	1515	1608	53	COLLECT DATA	COLLECT DATA BIDIRECTIONAL NORTH TO SOUTH	GPS	NA	LINEAR	SUNNY	WARM

Note: Activities pertinent to this specific demonstration are indicated in highlighted text.

Date	No. of People	Area Tested	Status Start Time	Status Stop Time	Duration, min	Operational Status	Operational Status Comments	Track Method	Track Method = Other Explain	Pattern	Field Conditions
12/01/2003	2	BLIND TEST GRID	1608	1612	4	SETUP/DAILY START/STOP/CALIBRATION	CALIBRATION	NA	NA	NA	SUNNY WARM
12/01/2003	2	BLIND TEST GRID	1612	1630	18	SETUP/DAILY START/STOP/CALIBRATION	END OF DAILY OPERATIONS/EQUIPMENT BREAKDOWN	NA	NA	NA	SUNNY WARM
12/02/2003	2	OPEN FIELD	0700	0840	100	SETUP/DAILY START/STOP/CALIBRATION	SETUP/MOBILIZATION	NA	NA	NA	SUNNY COOL
12/02/2003	2	OPEN FIELD	0840	1049	129	COLLECT DATA	COLLECT DATA BIDIRECTIONAL NORTH TO SOUTH	GPS	NA	LINEAR	SUNNY COOL
12/02/2003	2	OPEN FIELD	1049	1054	5	SETUP/DAILY START/STOP/CALIBRATION	CALIBRATION	NA	NA	NA	SUNNY COOL
12/02/2003	2	OPEN FIELD	1054	1135	41	SETUP/DAILY START/STOP/CALIBRATION	SETUP/MOBILIZATION	NA	NA	NA	SUNNY COOL
12/02/2003	2	OPEN FIELD	1135	1235	60	BREAK/LUNCH	LUNCH	NA	NA	NA	SUNNY COOL
12/02/2003	2	OPEN FIELD	1235	1240	5	DOWNTIME DUE TO EQUIP MAIN/CHECK	CHANGE BATTERY	NA	NA	NA	SUNNY COOL
12/02/2003	2	OPEN FIELD	0700	0840	100	SETUP/DAILY START/STOP/CALIBRATION	SETUP/MOBILIZATION	NA	NA	NA	SUNNY COOL

Date	No. of People	Area Tested	Status Start Time	Status Stop Time	Duration, min	Operational Status	Operational Status Comments	Track Method	Track Method = Other Explain	Pattern	Field Conditions
12/02/2003	2	OPEN FIELD	0840	1049	129	COLLECT DATA	COLLECT DATA BIDIRECTIONAL NORTH TO SOUTH	GPS	NA	LINEAR	SUNNY COOL
12/02/2003	2	OPEN FIELD	1049	1054	5	SETUP/DAILY START/STOP/CALIBRATION	CALIBRATION	NA	NA	NA	SUNNY COOL
12/02/2003	2	OPEN FIELD	1054	1135	41	SETUP/DAILY START/STOP/CALIBRATION	SETUP/MOBILIZATION	NA	NA	NA	SUNNY COOL
12/02/2003	2	OPEN FIELD	1135	1235	60	BREAK/LUNCH	LUNCH	NA	NA	NA	SUNNY COOL
12/02/2003	2	OPEN FIELD	1235	1240	5	DOWNTIME DUE TO EQUIP MAIN/CHECK	CHANGE BATTERY	NA	NA	NA	SUNNY COOL
12/02/2003	2	OPEN FIELD	1240	1246	6	SETUP/DAILY START/STOP/CALIBRATION	SETUP/MOBILIZATION	NA	NA	NA	SUNNY COOL
12/02/2003	2	OPEN FIELD	1246	1400	74	COLLECT DATA	COLLECT DATA BIDIRECTIONAL NORTH TO SOUTH	GPS	NA	LINEAR	SUNNY COOL
12/02/2003	2	OPEN FIELD	1400	1410	10	BREAK/LUNCH	BREAK	NA	NA	NA	SUNNY COOL
12/02/2003	2	OPEN FIELD	1410	1450	40	COLLECT DATA	COLLECT DATA BIDIRECTIONAL NORTH TO SOUTH	GPS	NA	LINEAR	SUNNY COOL
12/02/2003	2	OPEN FIELD	1450	1500	10	SETUP/DAILY START/STOP/CALIBRATION	CHANGE OPERATOR	NA	NA	NA	SUNNY COOL

Date	No. of People	Area Tested	Status Start Time	Status Stop Time	Duration, min	Operational Status	Operational Status Comments	Track Method	Track Method = Other Explain	Pattern	Field Conditions
12/02/2003	2	OPEN FIELD	1500	1520	20	COLLECT DATA	COLLECT DATA BIDIRECTIONAL NORTH TO SOUTH	GPS	NA	LINEAR	SUNNY COOL
12/02/2003	2	OPEN FIELD	1520	1525	5	DOWNTIME DUE TO EQUIP MAIN/CHECK	CHANGE BATTERY	NA	NA	NA	SUNNY COOL
12/02/2003	2	OPEN FIELD	1525	1532	7	COLLECT DATA	COLLECT DATA BIDIRECTIONAL NORTH TO SOUTH	GPS	NA	LINEAR	SUNNY COOL
12/02/2003	2	OPEN FIELD	1532	1535	3	SETUP/DAILY START/STOP/CALIBRATION	CALIBRATION	NA	NA	NA	SUNNY COOL
12/02/2003	2	OPEN FIELD	1535	1550	15	COLLECT DATA	COLLECT DATA BIDIRECTIONAL NORTH TO SOUTH	GPS	NA	LINEAR	SUNNY COOL
12/02/2003	2	OPEN FIELD	1550	1555	5	SETUP/DAILY START/STOP/CALIBRATION	CALIBRATION	NA	NA	NA	SUNNY COOL
12/02/2003	2	OPEN FIELD	1555	1615	20	SETUP/DAILY START/STOP/CALIBRATION	END OF DAILY OPERATIONS/EQUIPMENT BREAKDOWN	NA	NA	NA	SUNNY COOL
12/03/2003	2	OPEN FIELD	0715	0833	78	SETUP/DAILY START/STOP/CALIBRATION	SETUP/MOBILIZATION	NA	NA	NA	SUNNY COOL
12/03/2003	2	OPEN FIELD	0833	1100	147	COLLECT DATA	COLLECT DATA BIDIRECTIONAL NORTH TO SOUTH	GPS	NA	LINEAR	SUNNY COOL
12/03/2003	2	OPEN FIELD	1100	1150	50	BREAK/LUNCH	LUNCH	NA	NA	NA	SUNNY WARM
12/03/2003	2	OPEN FIELD	1150	1250	60	SETUP/DAILY START/STOP/CALIBRATION	SETUP/MOBILIZATION	NA	NA	NA	SUNNY WARM

Date	No. of People	Area Tested	Status Start Time	Status Stop Time	Duration, min	Operational Status	Operational Status Comments	Track Method	Track Method = Other Explain	Pattern	Field Conditions
12/03/2003	2	OPEN FIELD	1250	1510	140	COLLECT DATA	COLLECT DATA BIDIRECTIONAL NORTH TO SOUTH	GPS	NA	LINEAR	SUNNY WARM
12/03/2003	2	OPEN FIELD	1510	1515	5	SETUP/DAILY START/ STOP/CALIBRATION	CALIBRATION	NA	NA	NA	SUNNY WARM
12/03/2003	2	OPEN FIELD	1515	1600	45	SETUP/DAILY START/ STOP/CALIBRATION	END OF DAILY OPERATIONS/ EQUIPMENT BREAKDOWN	NA	NA	NA	SUNNY WARM
12/04/2003	2	OPEN FIELD	0700	0811	71	SETUP/DAILY START/ STOP/CALIBRATION	SETUP/MOBILIZATION	NA	NA	NA	SUNNY COOL
12/04/2003	2	OPEN FIELD	0811	0908	57	COLLECT DATA	COLLECT DATA BIDIRECTIONAL NORTH TO SOUTH	GPS	NA	LINEAR	SUNNY COOL
12/04/2003	2	CALIBRATION LANES	0908	0911	3	SETUP/DAILY START/ STOP/CALIBRATION	SETUP/MOBILIZATION	NA	NA	NA	SUNNY COOL
12/04/2003	2	CALIBRATION LANES	0911	0935	24	COLLECT DATA	COLLECT DATA BIDIRECTIONAL NORTH TO SOUTH	GPS	NA	LINEAR	SUNNY COOL
12/04/2003	2	CALIBRATION LANES	0935	0945	10	BREAK/LUNCH	BREAK	NA	NA	NA	SUNNY COOL
12/04/2003	2	OPEN FIELD	0945	1025	40	SETUP/DAILY START/ STOP/CALIBRATION	SETUP/MOBILIZATION	NA	NA	NA	SUNNY COOL
12/04/2003	2	OPEN FIELD	1025	1057	32	BREAK/LUNCH	LUNCH	NA	NA	NA	SUNNY WARM
12/04/2003	2	OPEN FIELD	1057	1106	9	SETUP/DAILY START/ STOP/CALIBRATION	CALIBRATION	NA	NA	NA	SUNNY WARM

Note: Activities pertinent to this specific demonstration are indicated in highlighted text.

Date	No. of People	Area Tested	Status Start Time	Status Stop Time	Duration, min	Operational Status	Operational Status Comments	Track Method	Track Method = Other Explain	Pattern	Field Conditions
12/04/2003	2	OPEN FIELD	1106	1400	174	COLLECT DATA	COLLECT DATA BIDIRECTIONAL NORTH TO SOUTH	GPS	NA	LINEAR	SUNNY WARM
12/04/2003	2	OPEN FIELD	1400	1405	5	SETUP/DAILY START/STOP/CALIBRATION	CALIBRATION	NA	NA	NA	SUNNY WARM
12/04/2003	2	MOGUL	1405	1440	35	DOWNTIME DUE TO EQUIP MAIN/CHECK	CHECK DATA	NA	NA	NA	SUNNY WARM
12/04/2003	2	MOGUL	1440	1540	60	SETUP/DAILY START/STOP/CALIBRATION	SETUP/MOBILIZATION	NA	NA	NA	SUNNY WARM
12/04/2003	2	MOGUL	1540	1600	20	SETUP/DAILY START/STOP/CALIBRATION	END OF DAILY OPERATIONS/ EQUIPMENT BREAKDOWN	NA	NA	NA	SUNNY WARM
12/05/2003	2	MOGUL	0655	0820	85	SETUP/DAILY START/STOP/CALIBRATION	SETUP/MOBILIZATION	NA	NA	NA	SUNNY COOL
12/05/2003	2	MOGUL	0820	0930	70	COLLECT DATA	COLLECT DATA BIDIRECTIONAL NORTH TO SOUTH	GPS	NA	LINEAR	SUNNY COOL
12/05/2003	2	MOGUL	0930	0933	3	BREAK/LUNCH	BREAK	NA	NA	NA	SUNNY COOL
12/05/2003	2	MOGUL	0933	1036	63	COLLECT DATA	COLLECT DATA BIDIRECTIONAL NORTH TO SOUTH	GPS	NA	LINEAR	SUNNY WARM
12/05/2003	2	MOGUL	1036	1041	5	BREAK/LUNCH	BREAK	NA	NA	NA	SUNNY WARM
12/05/2003	2	MOGUL	1041	1112	31	COLLECT DATA	COLLECT DATA BIDIRECTIONAL NORTH TO SOUTH	GPS	NA	LINEAR	SUNNY WARM

Date	No. of People	Area Tested	Status Start Time	Status Stop Time	Duration, min	Operational Status	Operational Status Comments	Track Method	Track Method = Other Explain	Pattern	Field Conditions
12/05/2003	2	MOGUL	1112	1125	13	DOWNTIME DUE TO EQUIP MAIN/CHECK	CHANGE BATTERY	NA	NA	NA	SUNNY WARM
12/05/2003	2	MOGUL	1125	1132	7	SETUP/DAILY START/ STOP/CALIBRATION	CALIBRATION	NA	NA	NA	SUNNY WARM
12/05/2003	2	MOGUL	1132	1320	108	COLLECT DATA	COLLECT DATA BIDIRECTIONAL NORTH TO SOUTH	GPS	NA	LINEAR	SUNNY WARM
12/05/2003	2	MOGUL	1320	1400	40	DOWNTIME DUE TO EQUIP MAIN/CHECK	CHECK DATA	NA	NA	NA	SUNNY WARM
12/05/2003	2	MOGUL	1400	1410	10	SETUP/DAILY START/ STOP/CALIBRATION	END OF DAILY OPERATIONS/ EQUIPMENT BREAKDOWN	NA	NA	NA	SUNNY WARM
12/08/2003	2	CALIBRATION PIT	0655	0840	105	SETUP/DAILY START/ STOP/CALIBRATION	SETUP/MOBILIZATION	NA	NA	NA	SUNNY COOL
12/08/2003	2	CALIBRATION PIT	0840	0850	10	COLLECT DATA	SIGNATURE DATA ON 40 MM	GPS	NA	LINEAR	SUNNY COOL
12/08/2003	2	CALIBRATION PIT	0850	0858	8	COLLECT DATA	SIGNATURE DATA ON M-42	GPS	NA	LINEAR	SUNNY COOL
12/08/2003	2	CALIBRATION PIT	0858	0904	6	COLLECT DATA	SIGNATURE DATA ON 20 MM	GPS	NA	LINEAR	SUNNY COOL
12/08/2003	2	CALIBRATION PIT	0904	0910	6	COLLECT DATA	SIGNATURE DATA ON BLU.26	GPS	NA	LINEAR	SUNNY COOL
12/08/2003	2	CALIBRATION PIT	0910	0938	28	DOWNTIME DUE TO EQUIP MAIN/CHECK	CHECK DATA	NA	NA	NA	SUNNY COOL

Date	No. of People	Area Tested	Status Start Time	Status Stop Time	Duration, min	Operational Status	Operational Status Comments	Track Method	Track Method = Other Explain	Pattern	Field Conditions
12/08/2003	2	CALIBRATION PIT	0938	0949	11	COLLECT DATA	SIGNATURE DATA ON 40 MM MK2	GPS	NA	LINEAR	SUNNY COOL
12/08/2003	2	CALIBRATION PIT	0949	0955	6	COLLECT DATA	SIGNATURE DATA ON 57 MM	GPS	NA	LINEAR	SUNNY COOL
12/08/2003	2	CALIBRATION PIT	0955	1000	5	COLLECT DATA	SIGNATURE DATA ON MK1 18 ROCKEYE	GPS	NA	LINEAR	SUNNY COOL
12/08/2003	2	CALIBRATION PIT	1000	1006	6	COLLECT DATA	SIGNATURE DATA ON BDU 28	GPS	NA	NA	SUNNY COOL
12/08/2003	2	CALIBRATION PIT	1006	1012	6	COLLECT DATA	SIGNATURE DATA ON 60 MM	GPS	NA	LINEAR	SUNNY COOL
12/08/2003	2	CALIBRATION PIT	1012	1017	5	COLLECT DATA	SIGNATURE DATA ON 2.75 INCH	GPS	NA	LINEAR	SUNNY COOL
12/08/2003	2	CALIBRATION PIT	1017	1021	4	COLLECT DATA	SIGNATURE DATA ON 90 MM	GPS	NA	LINEAR	SUNNY COOL
12/08/2003	2	CALIBRATION PIT	1021	1027	6	COLLECT DATA	SIGNATURE DATA ON 105 MM	GPS	NA	LINEAR	SUNNY COOL
12/08/2003	2	CALIBRATION PIT	1027	1034	7	COLECT DATA	SIGNATURE DATA ON 105 MM	GPS	NA	LINEAR	SUNNY COOL
12/08/2003	2	CALIBRATION PIT	1034	1039	5	COLLECT DATA	SIGNATURE DATA ON 40 MM	GPS	NA	LINEAR	SUNNY COOL
12/08/2003	2	CALIBRATION PIT	1039	1042	3	COLLECT DATA	SIGNATURE DATA ON BDU 28	GPS	NA	LINEAR	SUNNY COOL

Date	No. of People	Area Tested	Status Start Time	Status Stop Time	Duration, min	Operational Status	Operational Status Comments	Track Method	Track Method = Other Explain	Pattern	Field Conditions	
12/08/2003	2	CALIBRATION PIT	1042	1046	4	COLLECT DATA	SIGNATURE DATA ON 57 MM	GPS	NA	LINEAR	SUNNY	COOL
12/08/2003	2	CALIBRATION PIT	1046	1050	4	COLLECT DATA	SIGNATURE DATA ON 60 MM	GPS	NA	LINEAR	SUNNY	COOL
12/08/2003	2	CALIBRATION PIT	1050	1054	4	COLLECT DATA	SIGNATURE DATA ON MK1 18 ROCKEYE	GPS	NA	LINEAR	SUNNY	COOL
12/08/2003	2	CALIBRATION PIT	1054	1056	2	COLLECT DATA	SIGNATURE DATA ON 81 MM	GPS	NA	LINEAR	SUNNY	COOL
12/08/2003	2	CALIBRATION PIT	1056	1059	3	COLLECT DATA	SIGNATURE DATA ON 2.75 INCH	GPS	NA	LINEAR	SUNNY	COOL
12/08/2003	2	CALIBRATION PIT	1059	1102	3	COLLECT DATA	SIGNATURE DATA ON105 MM	GPS	NA	LINEAR	SUNNY	COOL
12/08/2003	2	CALIBRATION PIT	1102	1107	5	COLLECT DATA	SIGNATURE DATA ON155 MM	GPS	NA	LINEAR	SUNNY	COOL
12/08/2003	2	CALIBRATION PIT	1107	1111	4	COLLECT DATA	SIGNATURE DATA ON105 MM	GPS	NA	LINEAR	SUNNY	COOL
12/08/2003	2	CALIBRATION PIT	1111	1113	2	SETUP/DAILY START/ STOP/CALIBRATION	CALIBRATION	NA	NA	NA	SUNNY	COOL
12/08/2003	2	CALIBRATION PIT	1113	1200	47	DOWNTIME DUE TO EQUIP MAIN/CHECK	CHECK DATA	NA	NA	NA	SUNNY	COOL
12/08/2003	2	CALIBRATION PIT	1200	1240	40	DEMOBILIZATION	END OF TEST TURN-IN DISK	NA	NA	NA	SUNNY	COOL

Note: Activities pertinent to this specific demonstration are indicated in highlighted text.

Date	No. of People	Area Tested	Status Start Time	Status Stop Time	Duration, min	Operational Status	Operational Status Comments	Track Method	Track Method = Other Explain	Pattern	Field Conditions	
TEAM 1												
12/01/2003	2	OPEN FIELD	0815	1045	150	SETUP/DAILY START/ STOP/CALIBRATION	SETUP/MOBILIZATION	NA	NA	NA	SUNNY	COOL
12/01/2003	2	OPEN FIELD	1045	1140	55	SETUP/DAILY START/ STOP/CALIBRATION	SETUP/MOBILIZATION	NA	NA	NA	SUNNY	COOL
12/01/2003	2	OPEN FIELD	1140	1335	115	COLLECT DATA	COLLECTED DATA BI-DIRECTIONAL NORTH TO SOUTH	GPS	NA	LINEAR	SUNNY	COOL
12/01/2003	2	OPEN FIELD	1335	1415	40	BREAK/LUNCH	BREAK	NA	NA	NA	SUNNY	WARM
12/01/2003	2	OPEN FIELD	1415	1420	5	DOWNTIME DUE TO EQUIP MAIN/CHECK	CHANGE BATTERY	NA	NA	NA	SUNNY	WARM
12/01/2003	2	OPEN FIELD	1420	1515	55	COLLECT DATA	COLLECTED DATA BI-DIRECTIONAL NORTH TO SOUTH	GPS	NA	LINEAR	SUNNY	WARM
12/01/2003	2	OPEN FIELD	1515	1550	35	SETUP/DAILY START/ STOP/CALIBRATION	END OF DAILY OPERATIONS/ EQUIPMENT BREAKDOWN	NA	NA	NA	SUNNY	WARM
12/02/2003	2	OPEN FIELD	0700	0859	119	SETUP/DAILY START/ STOP/CALIBRATION	SETUP/MOBILIZATION	NA	NA	NA	SUNNY	COOL
12/02/2003	2	OPEN FIELD	0859	1041	102	COLLECT DATA	COLLECTED DATA BI-DIRECTIONAL NORTH TO SOUTH	GPS	NA	LINEAR	SUNNY	COOL
12/02/2003	2	OPEN FIELD	1041	1050	9	DOWNTIME DUE TO EQUIP MAIN/CHECK	CHANGE BATTERY	NA	NA	NA	SUNNY	COOL

Date	No. of People	Area Tested	Status Start Time	Status Stop Time	Duration, min	Operational Status	Operational Status Comments	Track Method	Track Method = Other Explain	Pattern	Field Conditions
12/02/2003	2	OPEN FIELD	1050	1135	45	BREAK/LUNCH	BREAK	NA	NA	NA	SUNNY COOL
12/02/2003	2	OPEN FIELD	1135	1240	65	BREAK/LUNCH	LUNCH	NA	NA	NA	SUNNY COOL
12/02/2003	2	OPEN FIELD	1240	1245	5	SETUP/DAILY START/STOP/CALIBRATION	SETUP/MOBILIZATION	NA	NA	NA	SUNNY COOL
12/02/2003	2	OPEN FIELD	1245	1437	112	COLLECT DATA	COLLECTED DATA BI-DIRECTIONAL NORTH TO SOUTH	NA	NA	NA	SUNNY COOL
12/02/2003	2	OPEN FIELD	1437	1450	13	BREAK/LUNCH	BREAK	GPS	NA	LINEAR	SUNNY COOL
12/02/2003	2	OPEN FIELD	1450	1515	25	SETUP/DAILY START/STOP/CALIBRATION	END OF DAILY OPERATIONS/ EQUIPMENT BREAKDOWN	NA	NA	NA	SUNNY COOL
12/03/2003	2	OPEN FIELD	0715	0822	67	SETUP/DAILY START/STOP/CALIBRATION	SET UP/ MOBILIZATION	NA	NA	NA	SUNNY COOL
12/03/2003	2	OPEN FIELD	0822	1005	103	COLLECT DATA	COLLECTED DATA BI-DIRECTIONAL NORTH TO SOUTH	GPS	NA	LINEAR	SUNNY COOL
12/03/2003	2	OPEN FIELD	1005	1030	25	BREAK/LUNCH	BREAK	NA	NA	NA	SUNNY COOL
12/03/2003	2	OPEN FIELD	1030	1100	30	SETUP/DAILY START/STOP/CALIBRATION	SET UP/ MOBILIZATION	NA	NA	NA	SUNNY COOL
12/03/2003	2	OPEN FIELD	1100	1150	50	BREAK/LUNCH	LUNCH	NA	NA	NA	SUNNY WARM

Date	No. of People	Area Tested	Status Start Time	Status Stop Time	Duration, min	Operational Status	Operational Status Comments	Track Method	Track Method = Other Explain	Pattern	Field Conditions
12/03/2003	2	OPEN FIELD	1150	1215	25	SETUP/DAILY START/ STOP/CALIBRATION	SET UP/ MOBILIZATION	NA	NA	NA	SUNNY WARM
12/03/2003	2	OPEN FIELD	1215	1414	119	COLLECT DATA	-	GPS	NA	LINEAR	SUNNY WARM
12/03/2003	2	OPEN FIELD	1414	1505	51	SETUP/DAILY START/ STOP/CALIBRATION	END OF DAILY OPERATIONS/ EQUIPMENT BREAKDOWN	NA	NA	NA	SUNNY WARM
12/04/2003	2	OPEN FIELD	0700	0805	65	SETUP/DAILY START/ STOP/CALIBRATION	SETUP/MOBILIZATION	NA	NA	NA	SUNNY COOL
12/04/2003	2	OPEN FIELD	0805	0917	72	COLLECT DATA	COLLECTED DATA BI-DIRECTIONAL NORTH TO SOUTH	GPS	NA	LINEAR	SUNNY COOL
12/04/2003	2	OPEN FIELD	0917	0930	13	BREAK/LUNCH	BREAK	NA	NA	NA	SUNNY COOL
12/04/2003	2	OPEN FIELD	0930	0957	27	SETUP/DAILY START/ STOP/CALIBRATION	SET UP/ MOBILIZATION	NA	NA	NA	SUNNY COOL
12/04/2003	2	OPEN FIELD	0957	1156	119	COLLECT DATA	COLLECTED DATA BI-DIRECTIONAL NORTH TO SOUTH	GPS	NA	LINEAR	SUNNY WARM
12/04/2003	2	OPEN FIELD	1156	1322	26	BREAK/LUNCH	BREAK	NA	NA	NA	SUNNY WARM
12/04/2003	2	YUMA EXTERME	1322	1327	5	DOWNTIME DUE TO EQUIP MAIN/CHECK	CHANGE BATTERY	NA	NA	NA	SUNNY WARM
12/04/2003	2	YUMA EXTERME	1327	1416	49	SETUP/DAILY START/ STOP/CALIBRATION	SET UP/ MOBILIZATION	NA	NA	NA	SUNNY WARM

Note: Activities pertinent to this specific demonstration are indicated in highlighted text.

Date	No. of People	Area Tested	Status Start Time	Status Stop Time	Duration, min	Operational Status	Operational Status Comments	Track Method	Track Method = Other Explain	Pattern	Field Conditions
12/04/2003	2	YUMA EXTERME	1416	1540	84	COLLECT DATA	COLLECTED DATA BI-DIRECTIONAL EAST TO WEST	GPS	NA	NA	SUNNY WARM
12/04/2003	2	YUMA EXTERME	1540	1600	20	SETUP/DAILY START/ STOP/CALIBRATION	END OF DAILY OPERATIONS/ EQUIPMENT BREAKDOWN	NA	NA	NA	SUNNY WARM
12/05/2003	2	YUMA EXTERME	0655	0755	60	SETUP/DAILY START/ STOP/CALIBRATION	SET UP/ MOBILIZATION	NA	NA	NA	SUNNY COOL
12/05/2003	2	YUMA EXTERME	0755	0938	103	COLLECT DATA	COLLECTED DATA BI-DIRECTIONAL EAST TO WEST	GPS	NA	LINEAR	SUNNY COOL
12/05/2003	2	YUMA EXTERME	0938	1000	22	DOWNTIME DUE TO EQUIP MAIN/CHECK	CHANGE BATTERY	NA	NA	NA	SUNNY COOL
12/05/2003	2	YUMA EXTERME	1000	1015	15	BREAK/LUNCH	BREAK	NA	NA	NA	SUNNY COOL
12/05/2003	2	YUMA EXTERME	1015	1220	125	SETUP/DAILY START/ STOP/CALIBRATION	SET UP/ MOBILIZATION	NA	NA	NA	SUNNY WARM
12/05/2003	2	YUMA EXTERME	1220	1330	70	BREAK/LUNCH	LUNCH	NA	NA	NA	SUNNY WARM
12/05/2003	2	YUMA EXTERME	1330	1345	15	SETUP/DAILY START/ STOP/CALIBRATION	END OF DAILY OPERATIONS/ EQUIPMENT BREAKDOWN	NA	NA	NA	SUNNY WARM
12/08/2003	2	YUMA EXTERME	0655	0740	45	SETUP/DAILY START/ STOP/CALIBRATION	SET UP/MOBILIZATION	NA	NA	NA	SUNNY COOL

Note: Activities pertinent to this specific demonstration are indicated in highlighted text.

Date	No. of People	Area Tested	Status Start Time	Status Stop Time	Duration, min	Operational Status	Operational Status Comments	Track Method	Track Method = Other Explain	Pattern	Field Conditions
12/08/2003	2	YUMA EXTERME	0740	0848	68	COLLECT DATA	COLLECTED DATA BI-DIRECTIONAL EAST TO WEST	GPS	NA	LINEAR	SUNNY COOL
12/08/2003	2	CALIBRATION LANES	0848	0912	24	SETUP/DAILY START/ STOP/CALIBRATION	SET UP/ MOBILIZATION	NA	NA	NA	SUNNY COOL
12/08/2003	2	CALIBRATION LANES	0912	0933	21	COLLECT DATA	COLLECTED DATA BI-DIRECTIONAL NORTH TO SOUTH	GPS	NA	LINEAR	SUNNY COOL
12/08/2003	2	CALIBRATION LANES	0933	1113	100	DEMOBILIZATION	END OF TEST	NA	NA	NA	SUNNY COOL

Note: Activities pertinent to this specific demonstration are indicated in highlighted text.

APPENDIX E. REFERENCES

1. Standardized UXO Technology Demonstration Site Handbook, DTC Project No. 8-CO-160-000-473, Report No. ATC-8349, March 2002.
2. Aberdeen Proving Ground Soil Survey Report, October 1998.
3. Data Summary, UXO Standardized Test Site: APG Soils Description, May 2002.
4. Data Summary, UXO Standardized Test Site: YPG Soils Description, May 2003.
5. Practical Nonparametric Statistics, W.J. Conover, John Wiley & Sons, 1980, pages 144 through 151.

APPENDIX F. ABBREVIATIONS

ACE	= Army Corps of Engineers
AEC	= U.S. Army Environmental Center
APG	= Aberdeen Proving Ground
ASCII	= American Standard Code for Information Interchange
ATC	= U.S. Army Aberdeen Test Center
ATSS	= Aberdeen Test and Support Services
CD-ROM	= compact disk, read-only memory
CST	= Arc Secon Constellation
DGPS	= differential Global Positioning System
EMIS	= Electromagnetic Induction Spectroscopy
EQT	= Army Environmental Quality Technology Program
ERDC	= U.S. Army Corps of Engineers Engineering Research and Development Center
ESTCP	= Environmental Security Technology Certification Program
GPO	= geophysical prove-out
GPR	= ground-penetrating radar
GPS	= Global Positioning System
GX	= Geosoft executable
HERO	= Hazards of Electromagnetic Radiation to Ordnance
Hz	= hertz
JPG	= Jefferson Proving Ground
LLC	= Limited Liability Company
MEDTC	= Military Environmental Technology Demonstration Center
MS	= Microsoft
mV	= millivolts
PCMCIA	= Personal Computer Memory Card International Associations
POC	= point of contact
QA	= quality assurance
QC	= quality control
ROC	= receiver-operating characteristic
RTK	= real time kinematic
RTS	= Robotic Total Station
SAR	= synthetic-aperture radar
SERDP	= Strategic Environmental Research and Development Program
TtFW	= Tetra Tech Foster Wheeler
USRADS	= Ultrasonic Ranging and Data System
UXO	= unexploded ordnance
VDS	= verification of detection system
YPG	= U.S. Army Yuma Proving Ground

APPENDIX G. DISTRIBUTION LIST

DTC Project No. 8-CO-160-UXO-021

<u>Addressee</u>	<u>No. of Copies</u>
Commander U.S. Army Environmental Center ATTN: SFIM-AEC-ATT (Mr. George Robitaille) Aberdeen Proving Ground, MD 21010-5401	2
Tetra Tech Foster Wheeler, Inc. ATTN: (Mr. Mike McGuire) 143 Union Blvd., Suite 1010 Lakewood, CO 80212	1
SERDP/ESTCP ATTN: (Ms. Anne Andrews) 901 North Stuart Street, Suite 303 Arlington, VA 22203	1
Commander U.S. Army Aberdeen Test Center ATTN: CSTE-DTC-SL-E (Mr. Larry Overbay) (Library) CSTE-DTC-AT-CS-R Aberdeen Proving Ground, MD 21005-5059	1 1 1
Defense Technical Information Center 8725 John J. Kingman Road, STE 0944 Fort Belvoir, VA 22060-6218	2

Secondary distribution is controlled by Commander, U.S. Army Environmental Center,
ATTN: SFIM-AEC-ATT.