

# REPORT DOCUMENTATION PAGE

*Form Approved*  
OMB No. 0704-0188

Public reporting burden for this collection of information is estimated to average 1 hour per response, including the time for reviewing instructions, searching existing data sources, gathering and maintaining the data needed, and completing and reviewing this collection of information. Send comments regarding this burden estimate or any other aspect of this collection of information, including suggestions for reducing this burden to Department of Defense, Washington Headquarters Services, Directorate for Information Operations and Reports (0704-0188), 1215 Jefferson Davis Highway, Suite 1204, Arlington, VA 22202-4302. Respondents should be aware that notwithstanding any other provision of law, no person shall be subject to any penalty for failing to comply with a collection of information if it does not display a currently valid OMB control number. **PLEASE DO NOT RETURN YOUR FORM TO THE ABOVE ADDRESS.**

<b>1. REPORT DATE (DD-MM-YYYY)</b> 02-11-2005		<b>2. REPORT TYPE</b> Briefing Charts		<b>3. DATES COVERED (From - To)</b>	
<b>4. TITLE AND SUBTITLE</b>  Computer Programs for Solar Concentrator Focus Control (Preprint)				<b>5a. CONTRACT NUMBER</b>	
				<b>5b. GRANT NUMBER</b>	
				<b>5c. PROGRAM ELEMENT NUMBER</b>	
<b>6. AUTHOR(S)</b> Joseph N. Beasley (AFRL/PRSO); Michael R. Holmes (AFRL/PRSS)				<b>5d. PROJECT NUMBER</b> 1011	
				<b>5e. TASK NUMBER</b> 0062	
				<b>5f. WORK UNIT NUMBER</b>	
<b>7. PERFORMING ORGANIZATION NAME(S) AND ADDRESS(ES)</b>  Air Force Research Laboratory (AFMC) AFRL/PRSS 1 Ara Road Edwards AFB CA 93524-7013				<b>8. PERFORMING ORGANIZATION REPORT NUMBER</b>  AFRL-PR-ED-VG-2005-416	
<b>9. SPONSORING / MONITORING AGENCY NAME(S) AND ADDRESS(ES)</b>  Air Force Research Laboratory (AFMC) AFRL/PRS 5 Pollux Drive Edwards AFB CA 93524-70448				<b>10. SPONSOR/MONITOR'S ACRONYM(S)</b>	
				<b>11. SPONSOR/MONITOR'S NUMBER(S)</b> AFRL-PR-ED-VG-2005-416	
<b>12. DISTRIBUTION / AVAILABILITY STATEMENT</b>  Approved for public release; distribution unlimited					
<b>13. SUPPLEMENTARY NOTES</b> Presented at the JANNAF Joint Propulsion Conference, Monterey, CA, 5-9 Dec 2005.					
<b>14. ABSTRACT</b> This presentation describes two methods for imaging an absorber used as a new sensor in determining the location of the focal spot for a solar concentrator. The absorber is used as a sensor in both methods, but in slightly different ways. The first method developed is an optimization method inspired by Shack-Hartmann wave front sensing. This optimization utilizes masking and a correlation calculation to determine the error from the current image of the focal spot and the ideal or designed position of the focal spot. The second method still uses the absorber as a sensor but calculates area moments of the reflected sunlight on the tubing to calculate the current location of the focal spot.					
<b>15. SUBJECT TERMS</b>					
<b>16. SECURITY CLASSIFICATION OF:</b>			<b>17. LIMITATION OF ABSTRACT</b>	<b>18. NUMBER OF PAGES</b>	<b>19a. NAME OF RESPONSIBLE PERSON</b> Joseph N. Beasley
<b>a. REPORT</b>	<b>b. ABSTRACT</b>	<b>c. THIS PAGE</b>			
Unclassified	Unclassified	Unclassified	A	33	<b>19b. TELEPHONE NUMBER</b> <i>(include area code)</i> (661) 275-6458



# COMPUTER PROGRAMS FOR SOLAR CONCENTRATOR FOCUS CONTROL

**Joseph N. Beasley**

**USAF/AFRL/PRSO**

**Cal State University, Long Beach**

**Claremont Graduate University**

**Michael R. Holmes**

**USAF/AFRL/PRSS**

**53<sup>nd</sup> JANNAF JPM**

**5 Dec 2005**

Approved for public release;  
distribution unlimited.



# Agenda



- **Introduction**
- **Problem Discussion**
- **Algorithm Introduction**
- **Experiment Description**
- **Results**
- **Conclusions and Future Work**



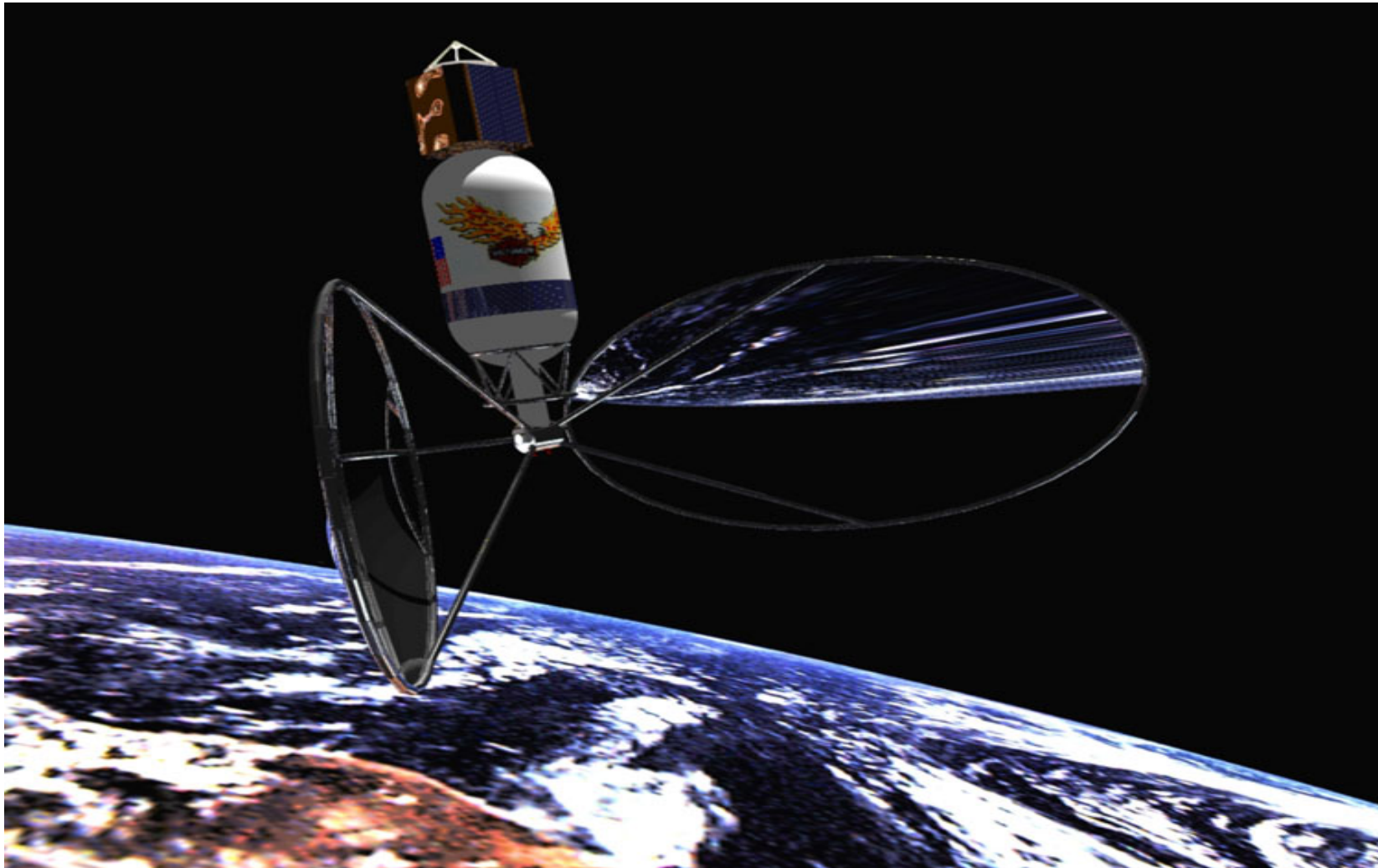
# Introduction



- **The major problem encountered when using a solar propulsion system is the proper placement of the focal spot on the thruster absorber plane. Without proper placement of the focal spot, solar energy is not transferred to the propellant gas.**



# Solar Thermal Spacecraft Configuration



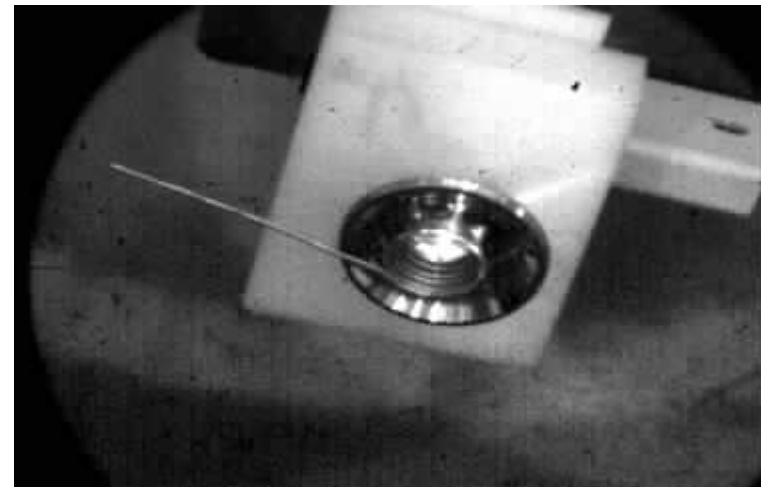
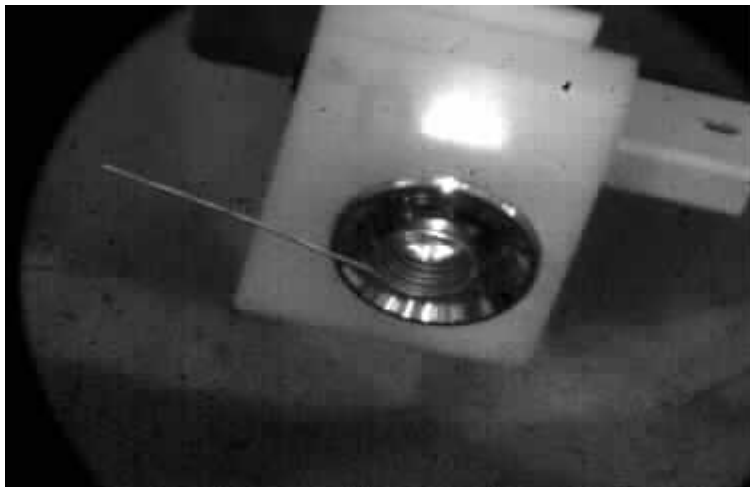
Approved for public release;  
distribution unlimited.



# Problem



**Determine location of solar focal spot on a visually complex thruster absorber and secondary concentrator. Visual complexity is compounded by specular reflection from the secondary concentrator and by the fact that the camera is moving with the concentrator.**



Approved for public release;  
distribution unlimited.



# Basic Problem Solution Concept



- **Use Charge Coupled Device (CCD) Camera as the primary fine focus sensor. Images of the thruster absorber are taken by the camera to be analyzed.**
- **Develop algorithm(s) for determining focal spot position from image of thruster absorber and secondary concentrator to produce control commands for the main concentrator. Optimize control with respect to power or energy (temperature) transferred to the propellant gas.**



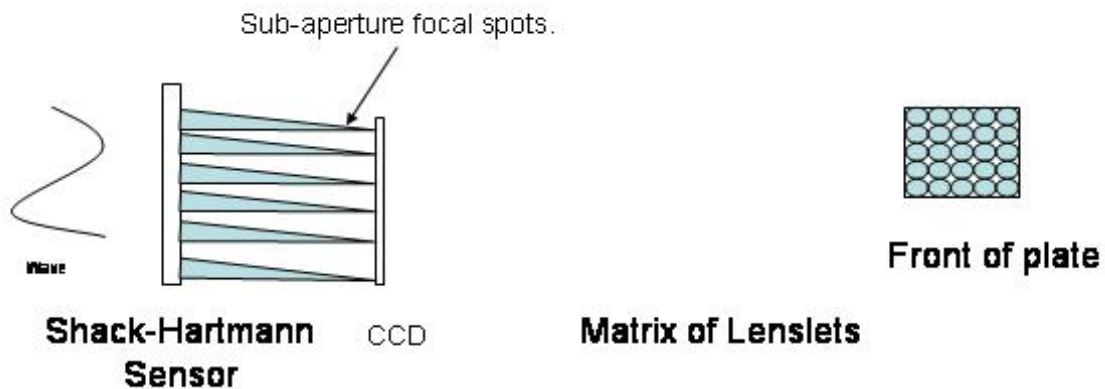
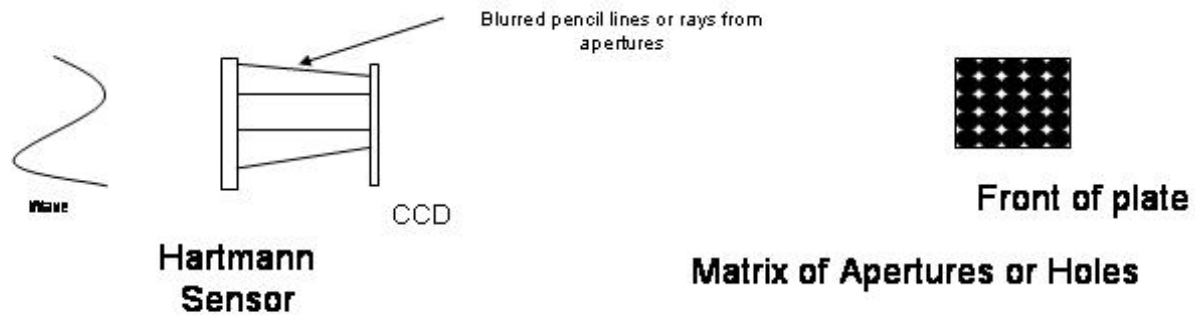
# Wave Front Sensing



- **Hartmann Sensor**
  - Utilized an array of holes or apertures to measure differences in tilt angle of waves by measuring the differences in position of the images of the apertures with a tilted waveform versus the images of the apertures with a non-tilted waveform. A lens behind the aperture plate collects the information and directs that information to a collector array.
- **Shack-Hartmann Sensor**
  - Replaced the array of apertures with small lenses or lenslets.



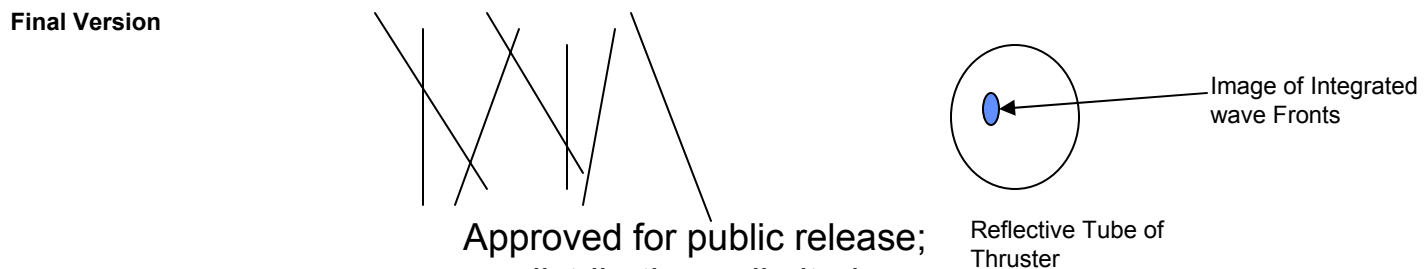
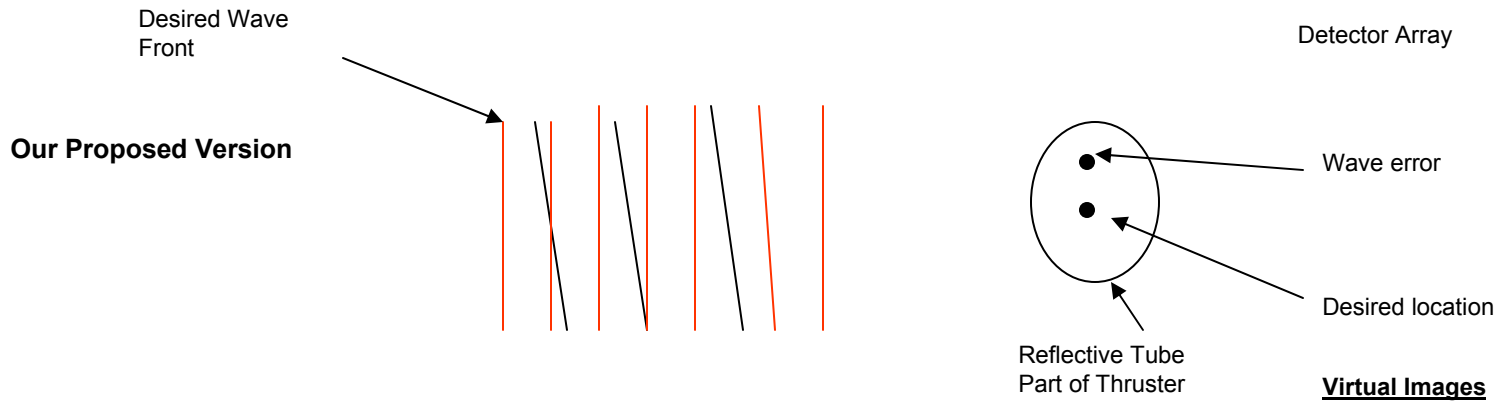
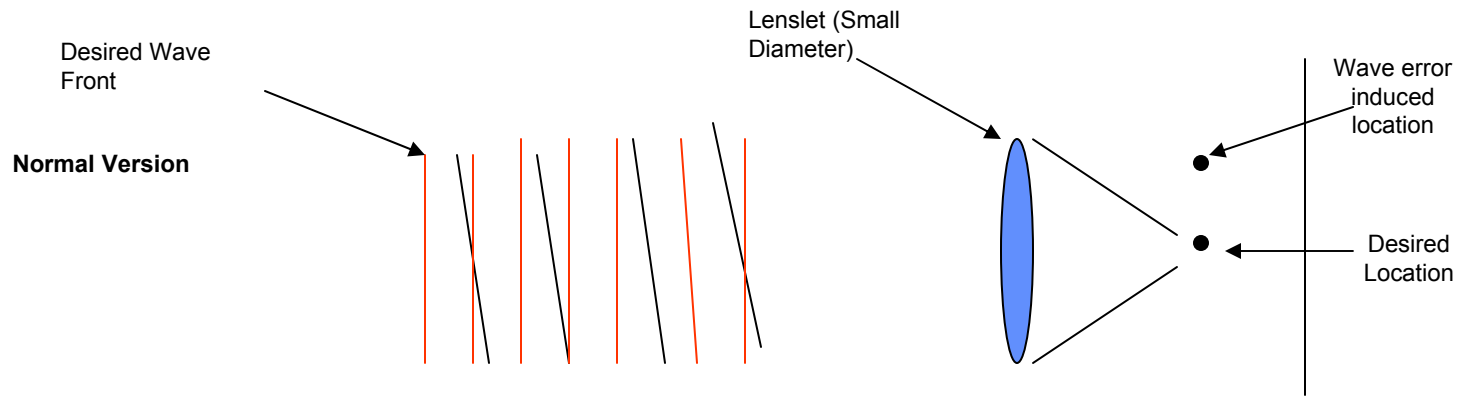
# Comparison of Wave Front Sensors



Approved for public release;  
distribution unlimited.



# Wave Front Sensing(Cont.)





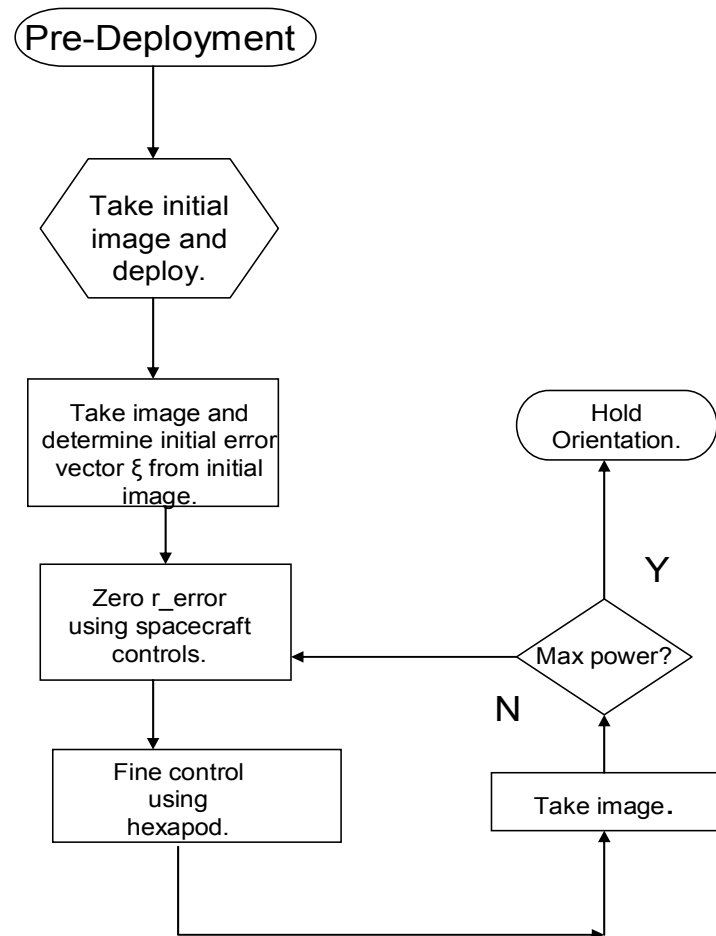
# Algorithms



- **Method 1: A method that utilizes masking, correlation, and an optimization process to determine the position of the focus.**
- **Method 2: Utilizing area moments of the light reflected in each tube of the sensor, a centroid of light is determined and compared to the center of the sensor. The difference between the center position and the calculated centroid determines the direction to move the light to reduce that difference.**
- **By knowing where the center of the absorber is located with respect to the camera (a non-trivial assumption as the camera would probably be mounted on one of the concentrator's movable struts) , the computer should be able to generate x, y, z, roll, pitch, and yaw commands for the hexapod controller to move the concentrator to a new position to provide better focus and thus better heating.**



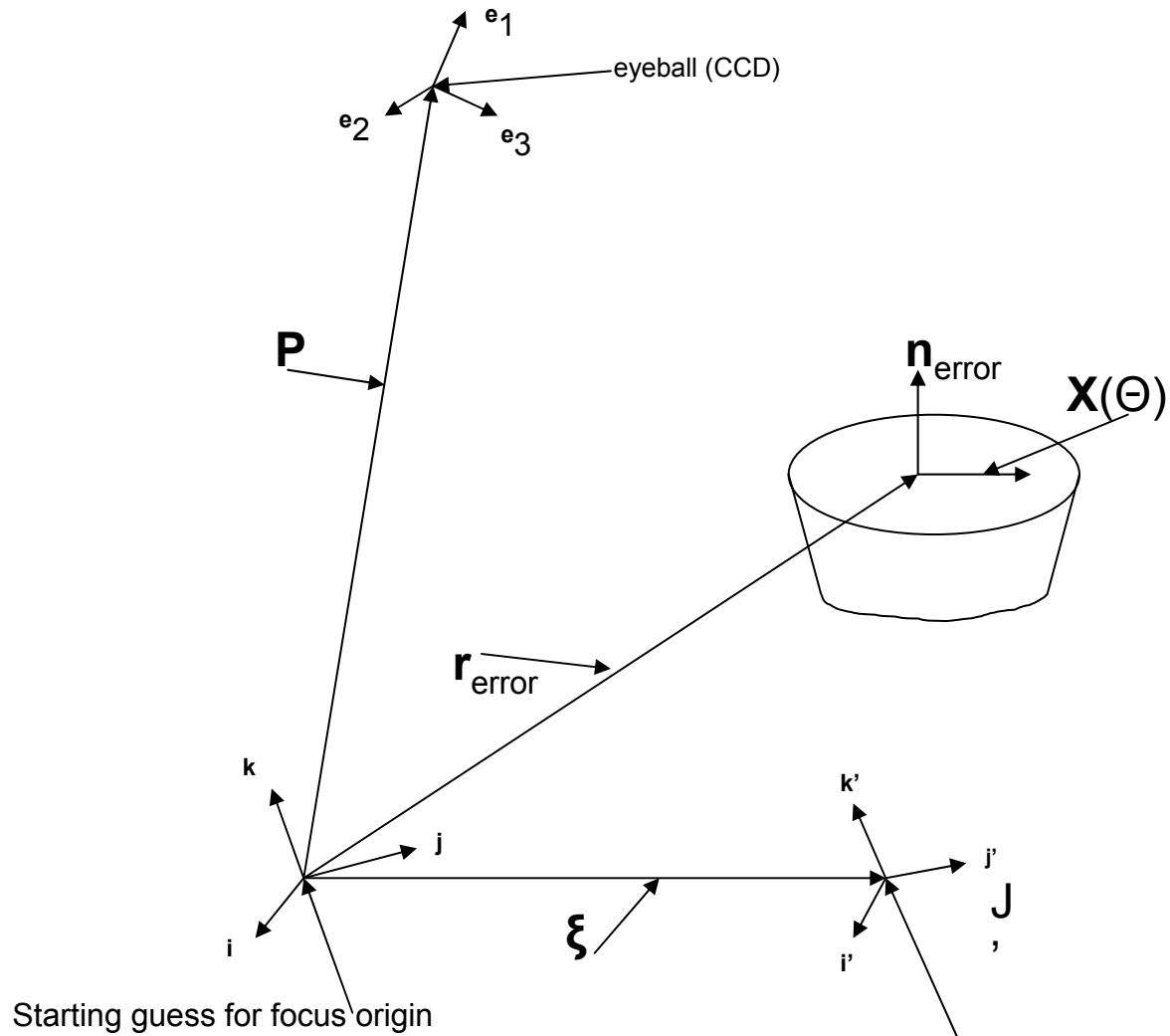
# Flow Chart Of Methods



Approved for public release;  
distribution unlimited.



# Starting Coordinates Method 1



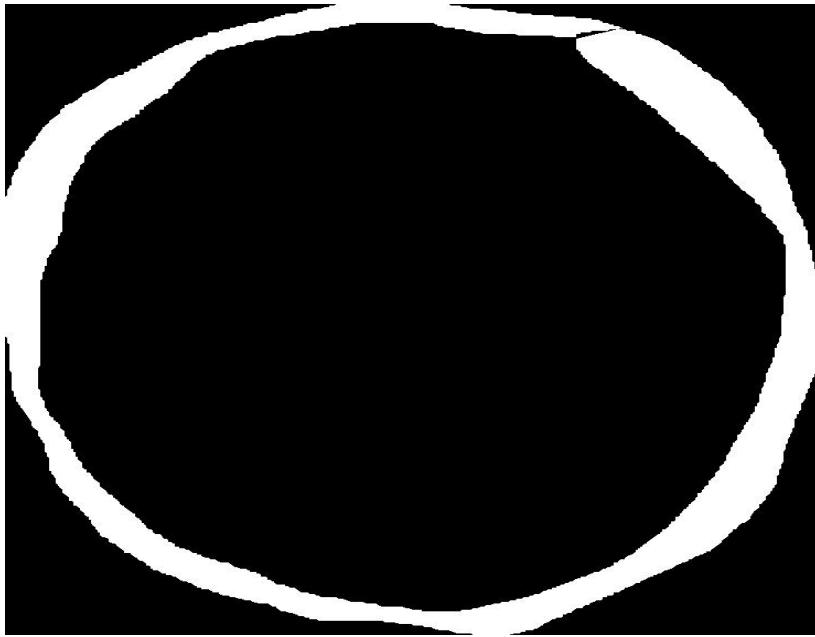
Starting guess for focus origin

Final location for focus origin

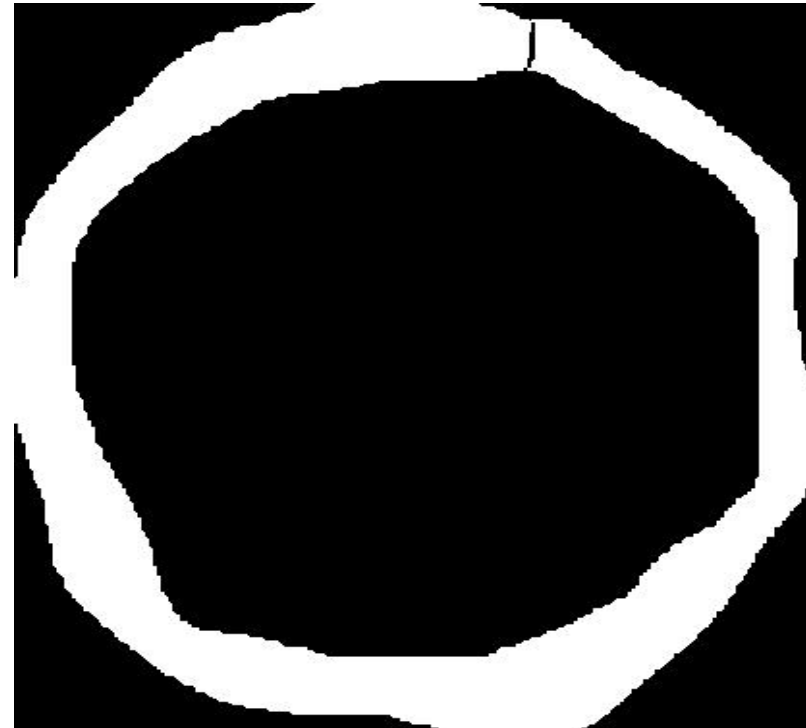
Approved for public release;  
distribution unlimited.



# Masks Used For Method 1



Outer Ring Mask



Inner Ring Mask

Approved for public release;  
distribution unlimited.



# Method 1 Masks Continued

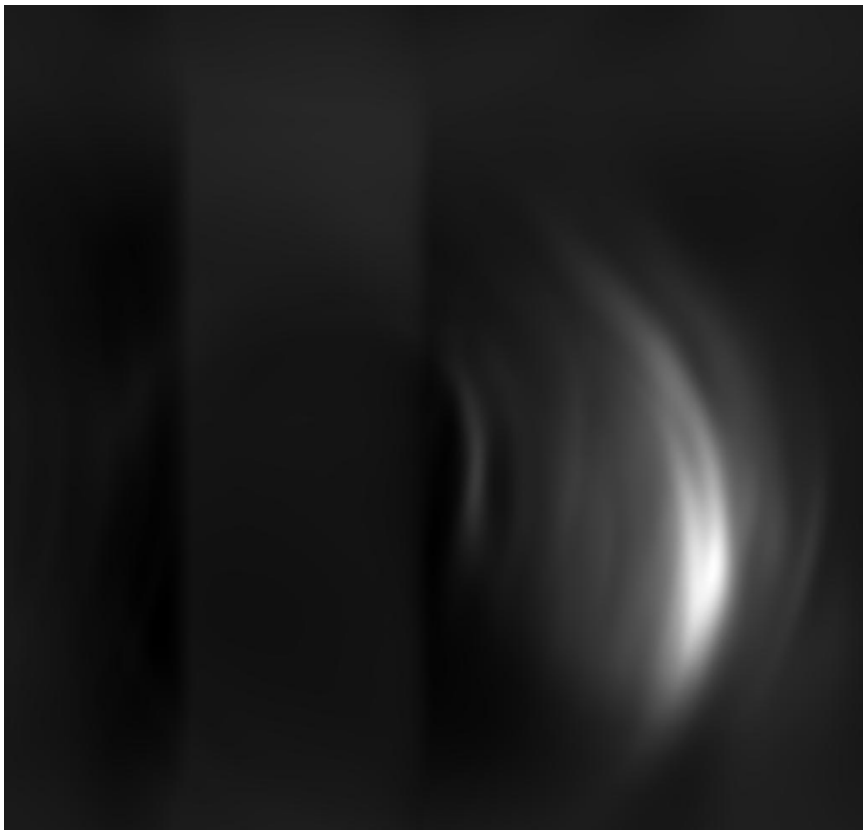


Banana Shape Mask

Approved for public release;  
distribution unlimited.



# Correlation Results Method 1

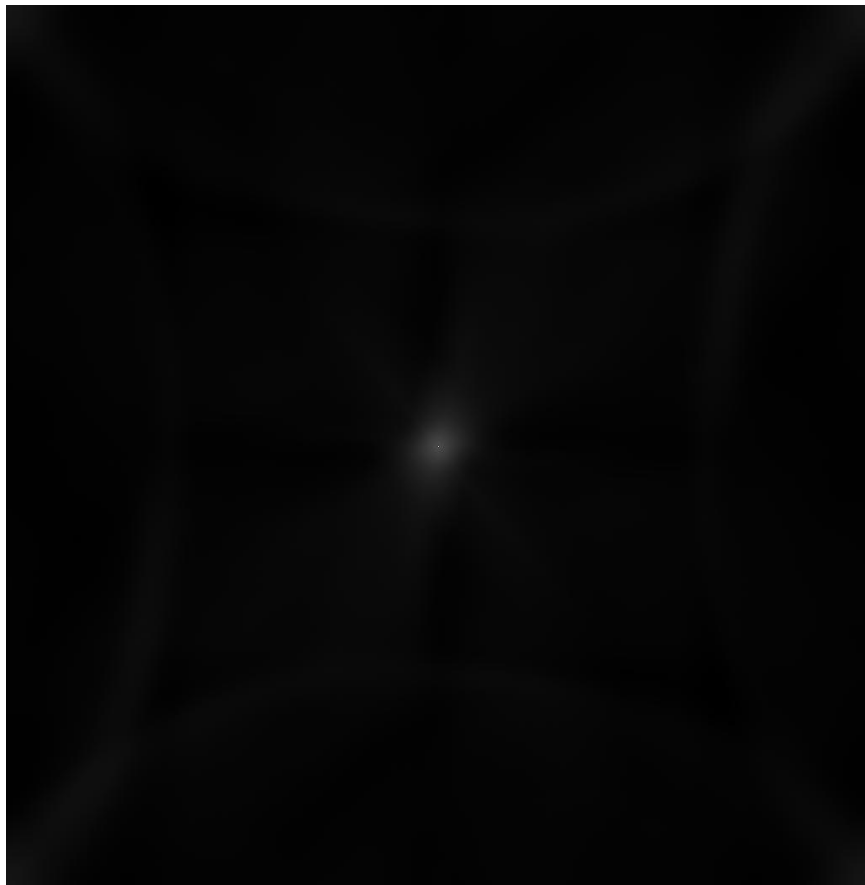


Correlation 4 Diam. Correlation. 2 Diam

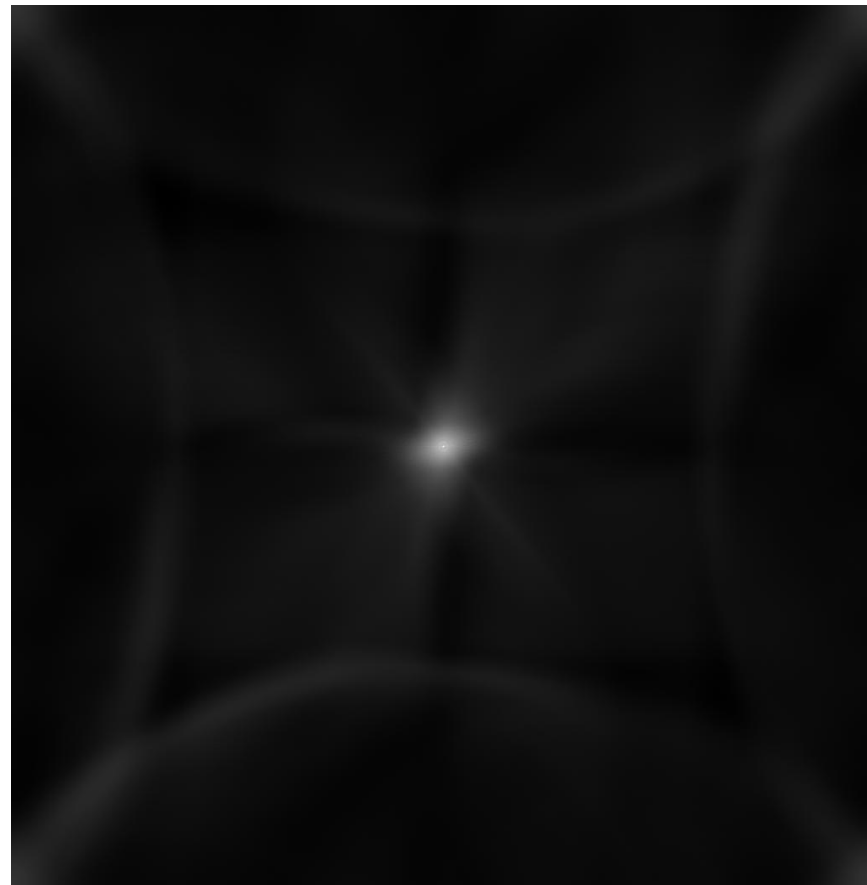
Approved for public release;  
distribution unlimited.



# Correlation Results



Autocorrelation



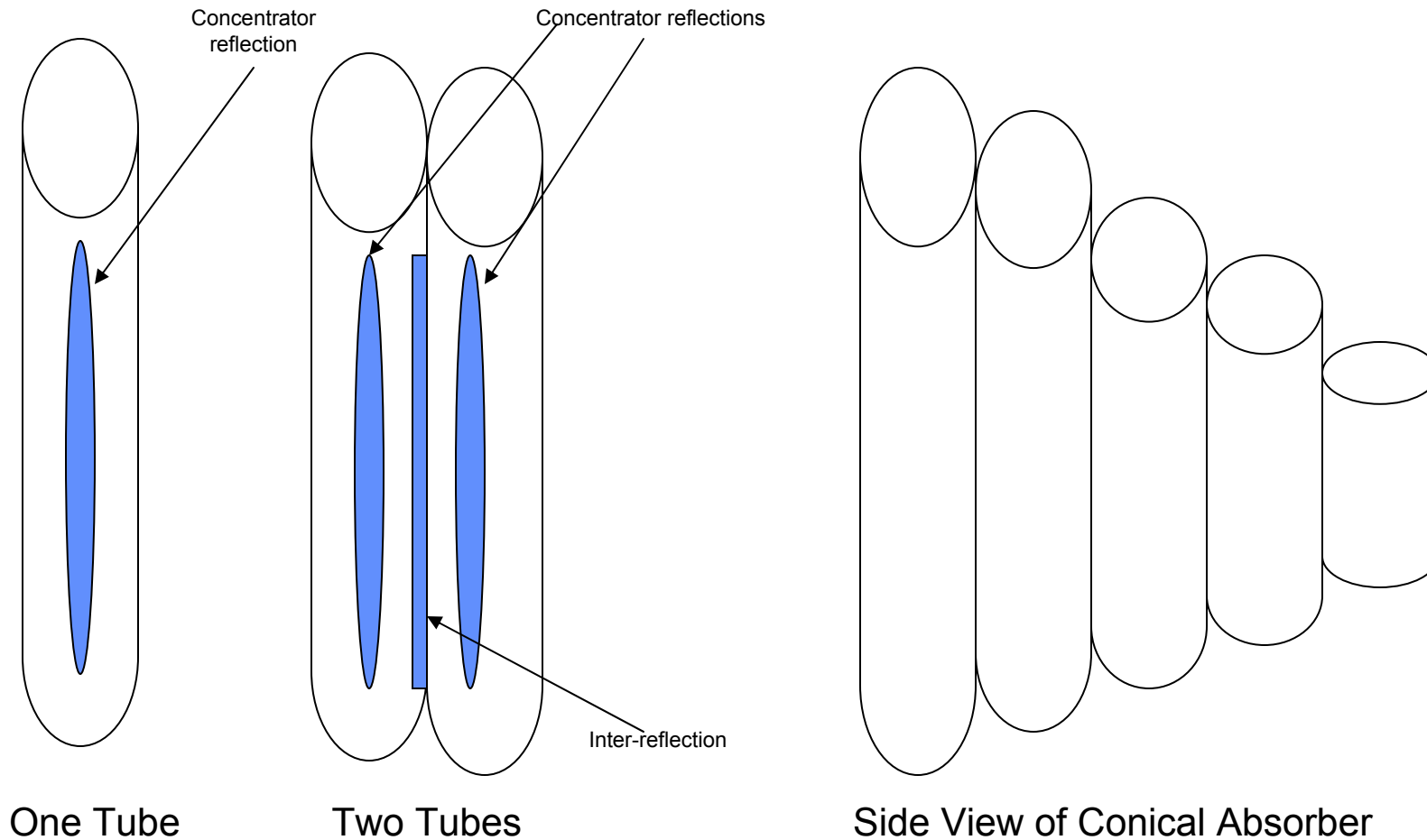
Correlation Up

1Diam

Approved for public release;  
distribution unlimited.



# Cylindrical Mirror and Conical Absorber

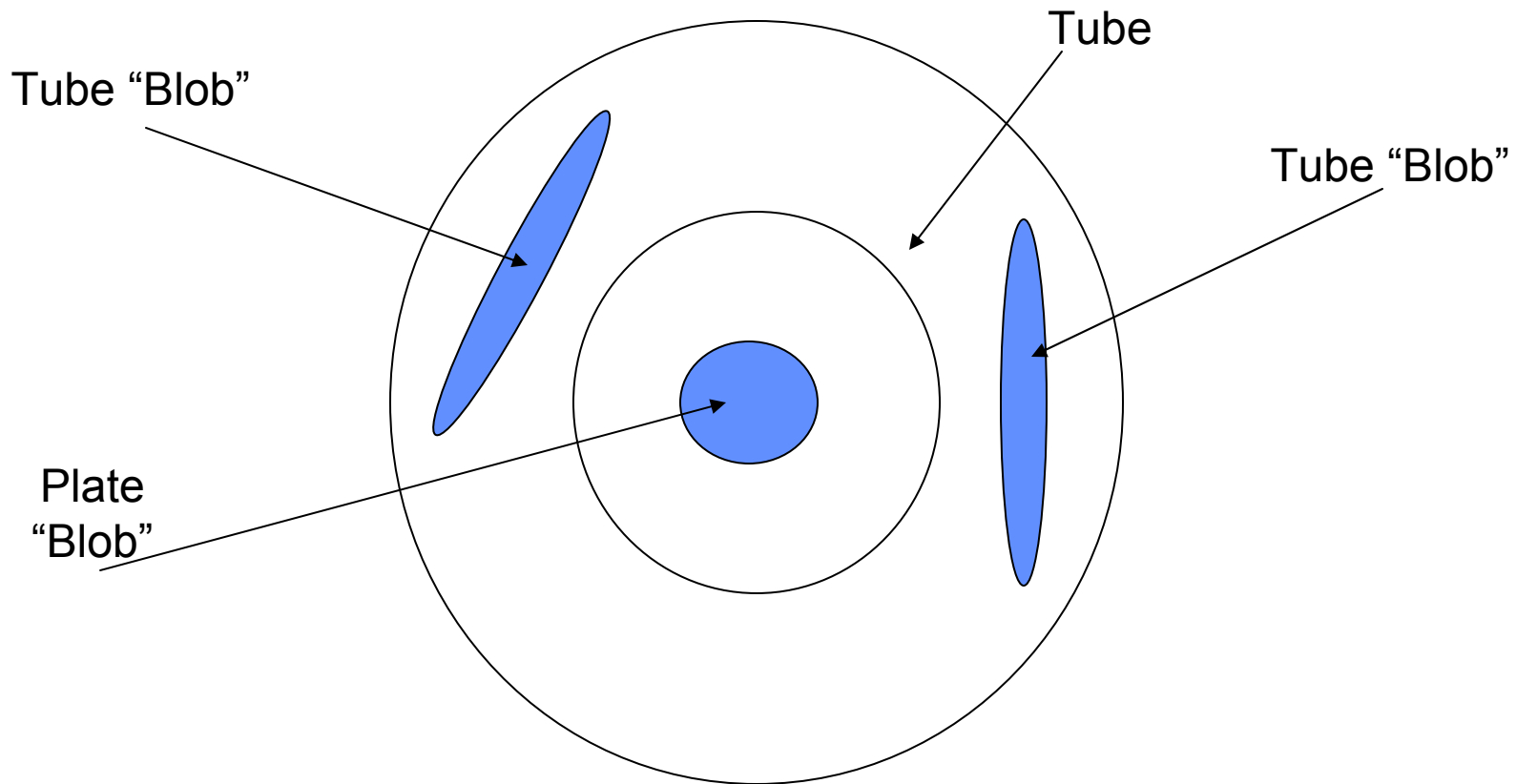


“Cylindrical  
Mirror”

Approved for public release;  
distribution unlimited.



# Typical Image

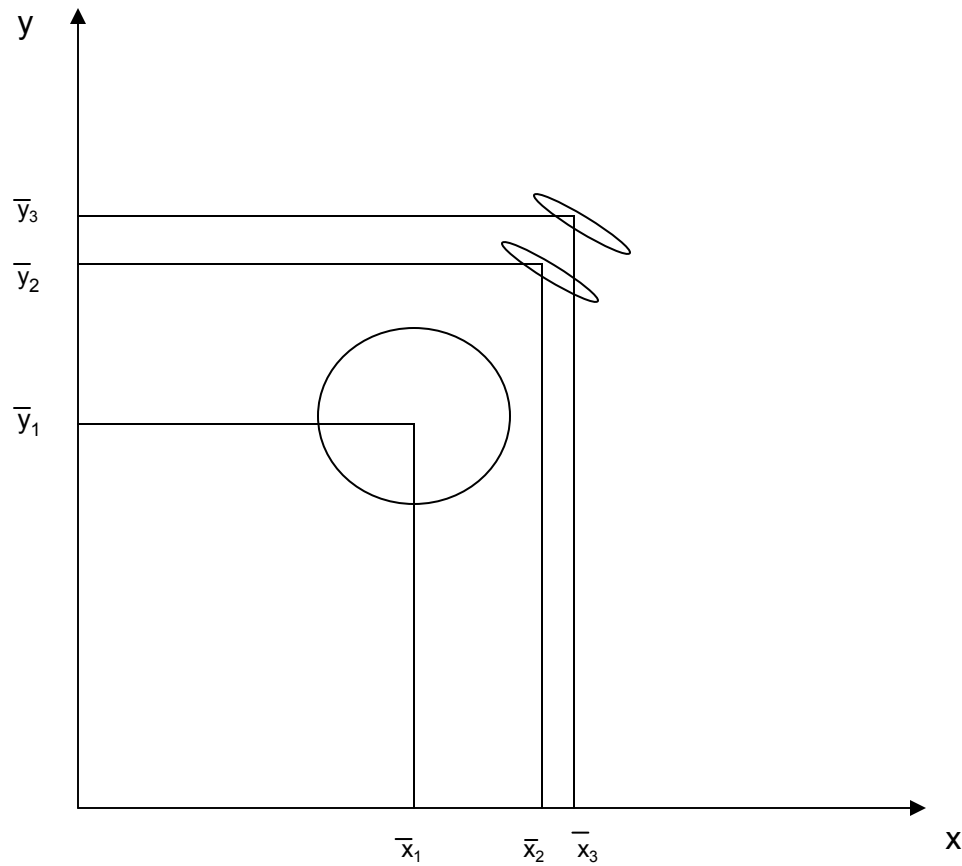


Tube "Blobs" can appear anywhere  
along or on the tube.  
Plate "Blobs" appear on the plate  
in the center of the tube.

Approved for public release;  
distribution unlimited.



# Area Centroids Determination

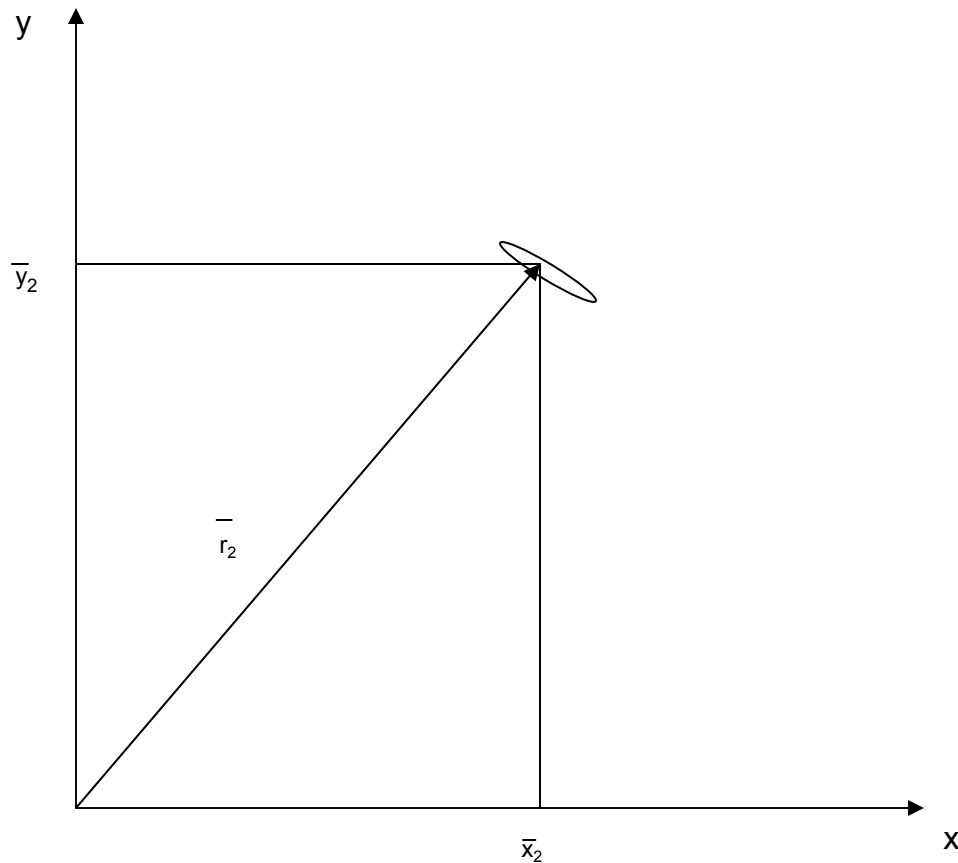


Approved for public release;  
distribution unlimited.





# Angle Construction Area Moments



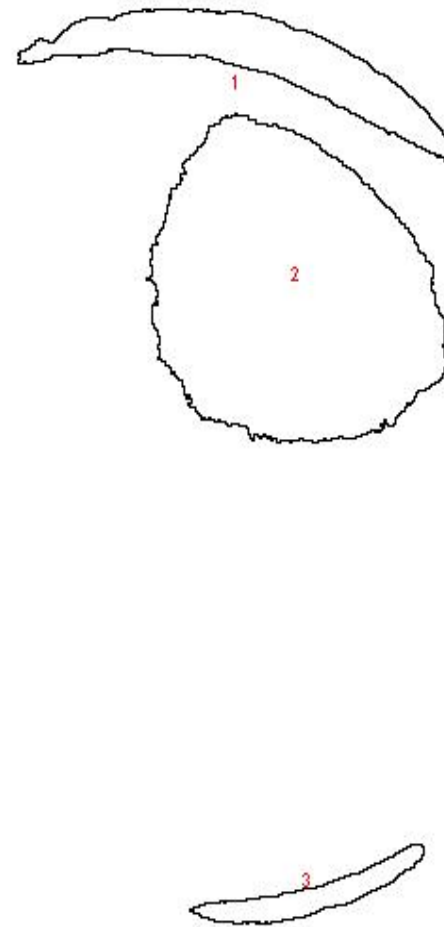
Approved for public release;  
distribution unlimited.



# Blob Determination



On Focus Image



Blobs Count

Approved for public release;  
distribution unlimited.



# Experiment Setup



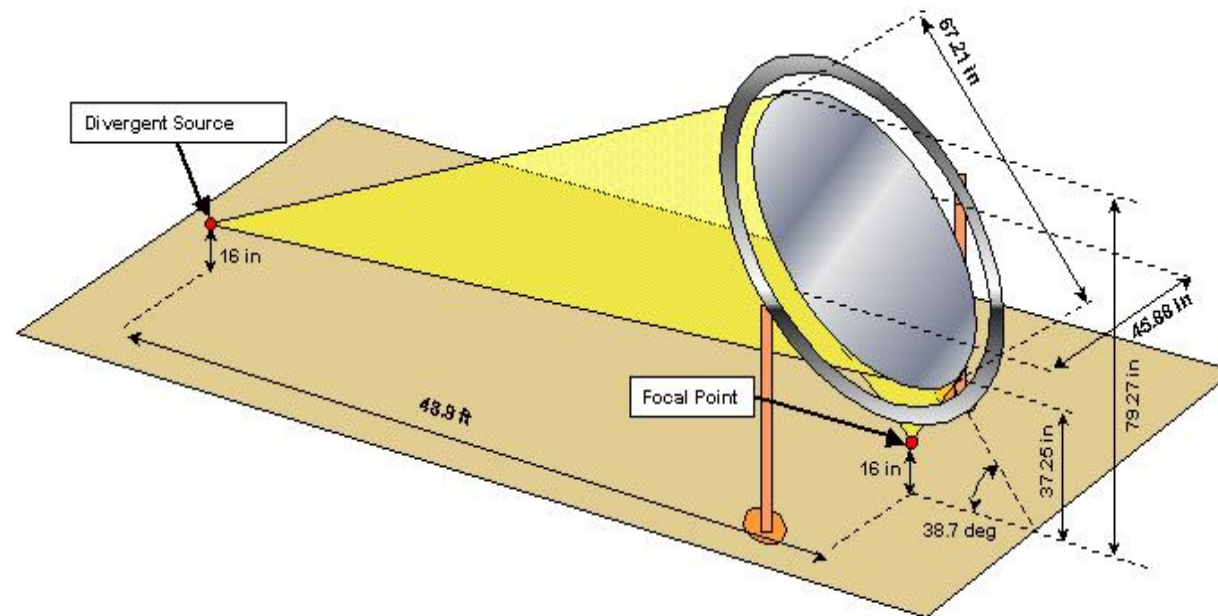
- **Utilize Stainless Steel Absorber to determine feasibility of methods.**
- **CCD Camera used to take images using SBIG Software CCDOPS.**
- **IMAGEJ GUI used to process images using both algorithms.**
- **3 inch LED light utilized to simulate the sun as an extended source.**



# Experiment Schematic



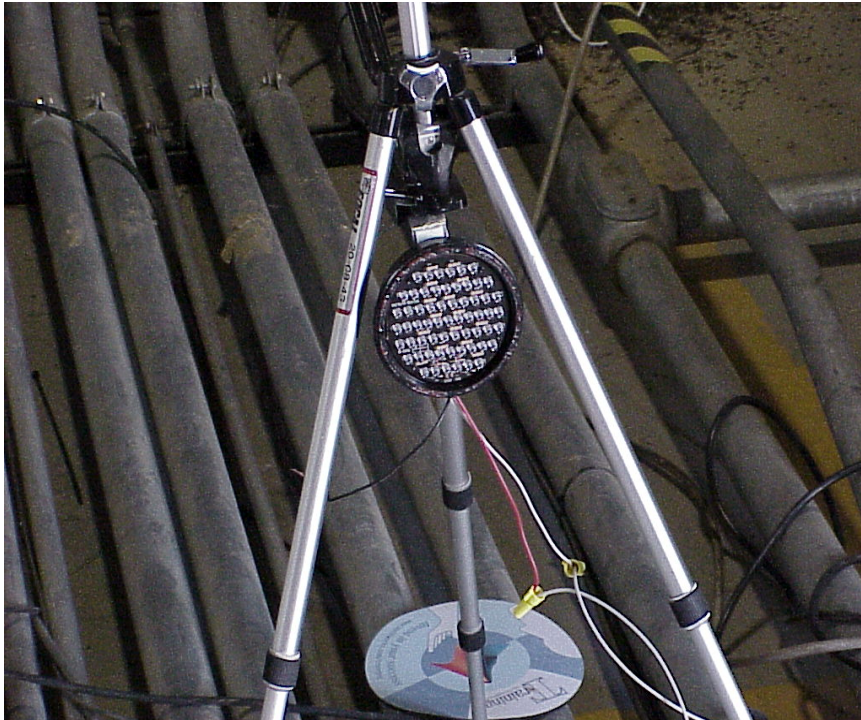
## Test Apparatus



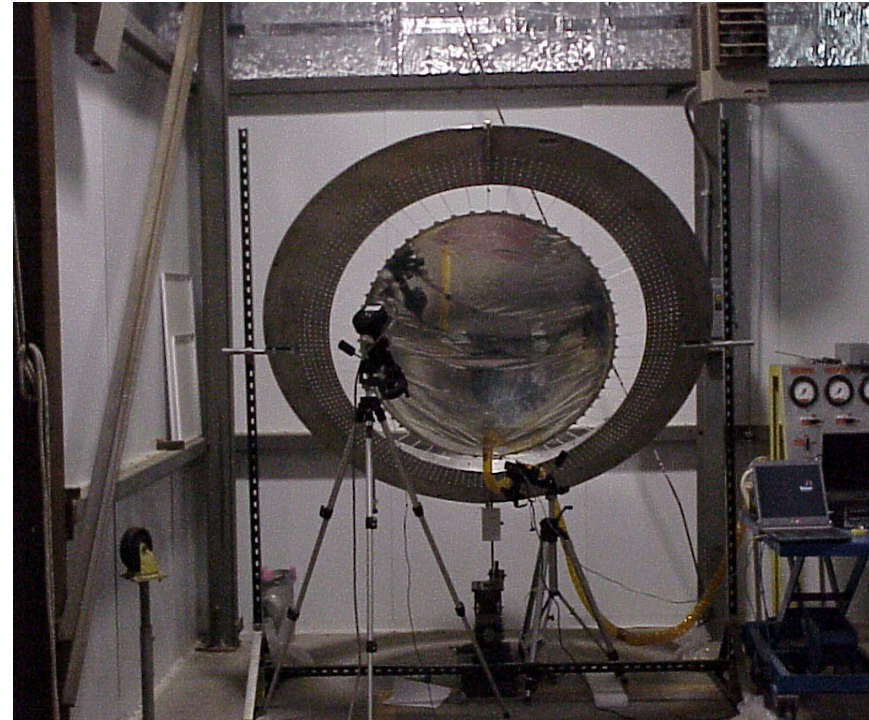
Approved for public release;  
distribution unlimited.



# Experiment Setup Continued



Divergent Source



Concentrator From Source End

Approved for public release;  
distribution unlimited.



# Conclusion and Future Work



- **Showed that the concept works with either method.**
- **Method 1: Correlation worked to about 1-2 diameters of misalignment.**
- **Method 2: Area moments worked well below 1 diameter. Removing center plate reflection helped as the focal spot moved below 1 diameter misalignment.**
- **Check out using the Phase Only Correlation (POC) to improve correlation.**
- **Automate the functions and apply to hexapod and concentrator.**



# BACKUP SLIDES



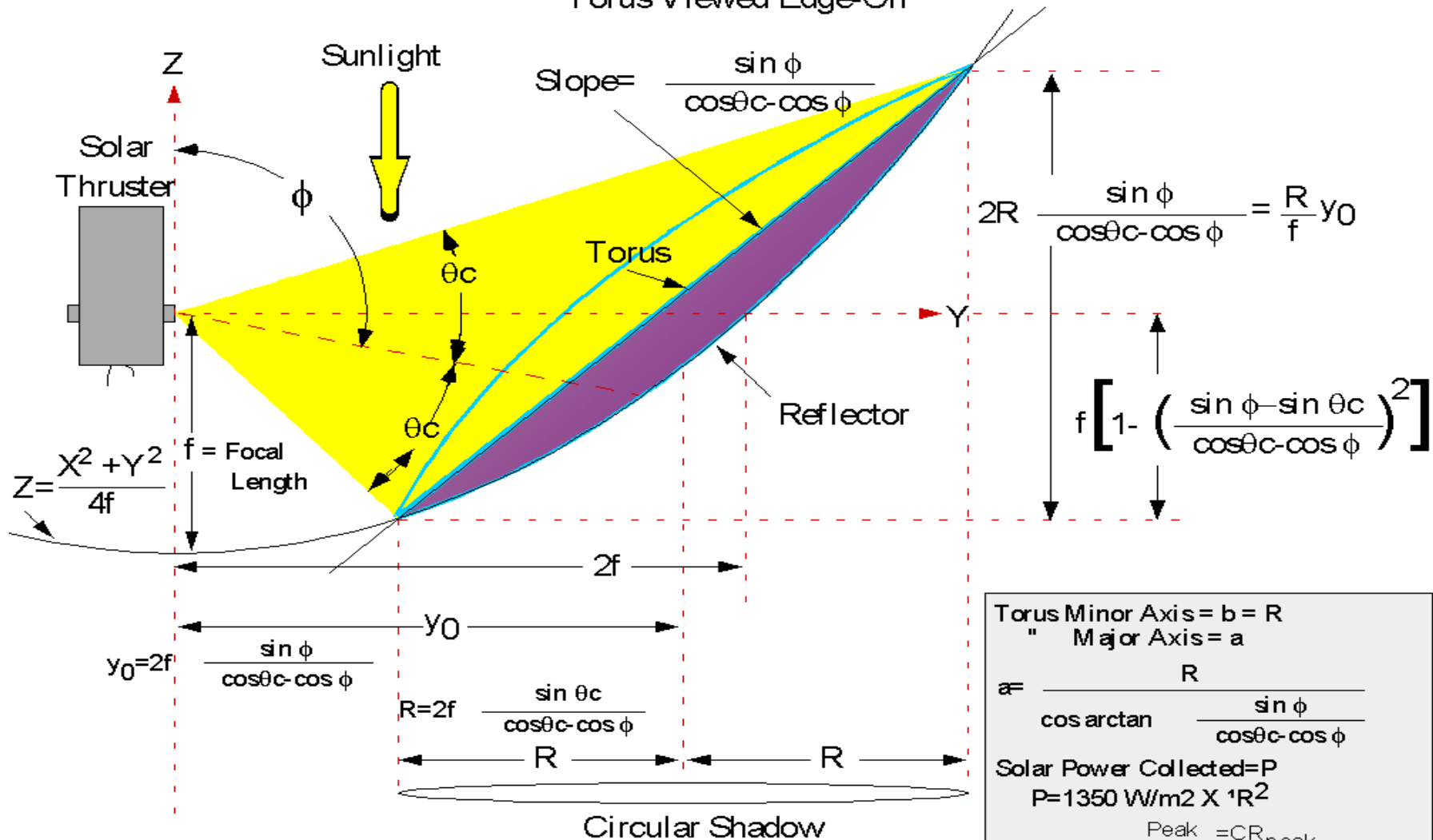
Approved for public release;  
distribution unlimited.



# Geometry For Spacecraft



Solar Thruster Concentrator;  
Torus Viewed Edge-On

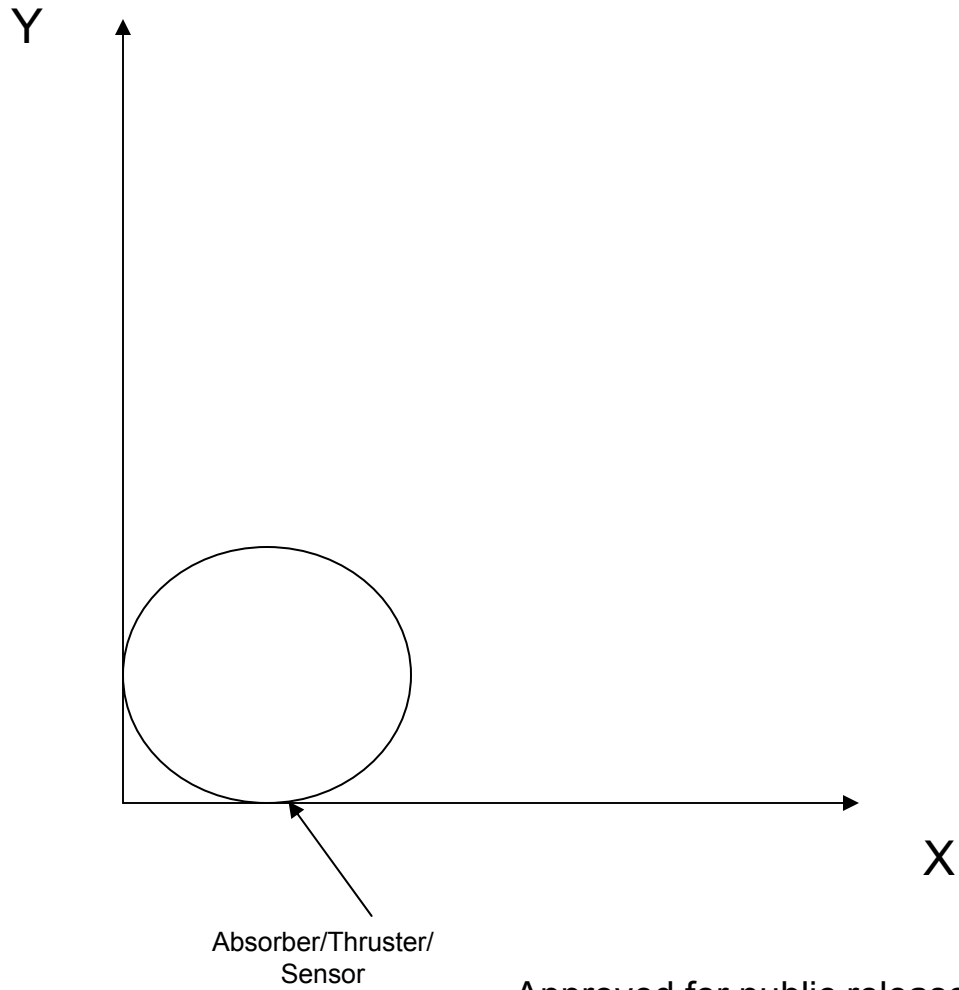


Torus Minor Axis =  $b = R$   
 " Major Axis =  $a$

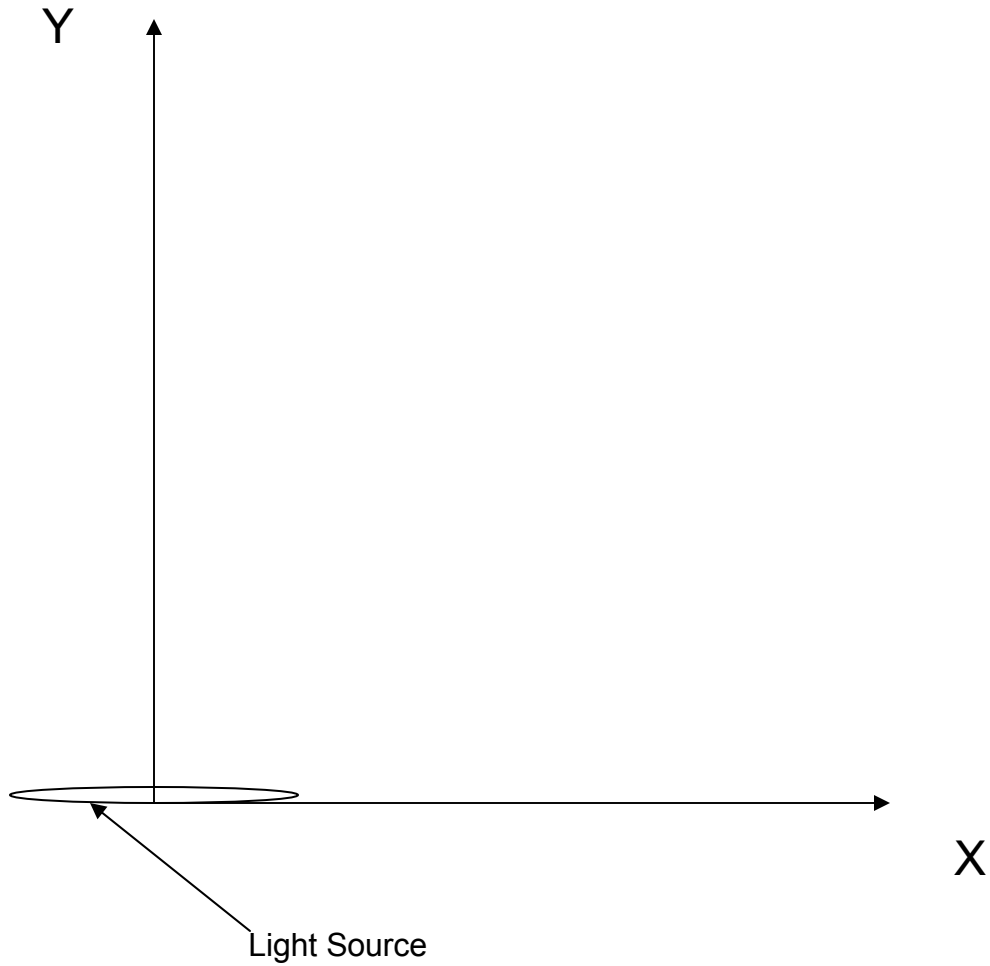
$a = \frac{R}{\cos \arctan \frac{\sin \phi}{\cos \theta_c - \cos \phi}}$

Solar Power Collected =  $P$   
 $P = 1350 \text{ W/m}^2 \times 1R^2$

Peak Concentration Ratio =  $CR_{\text{peak}} = 46,000 \sin^2 \theta_c$



Approved for public release;  
distribution unlimited.



Approved for public release;  
distribution unlimited.



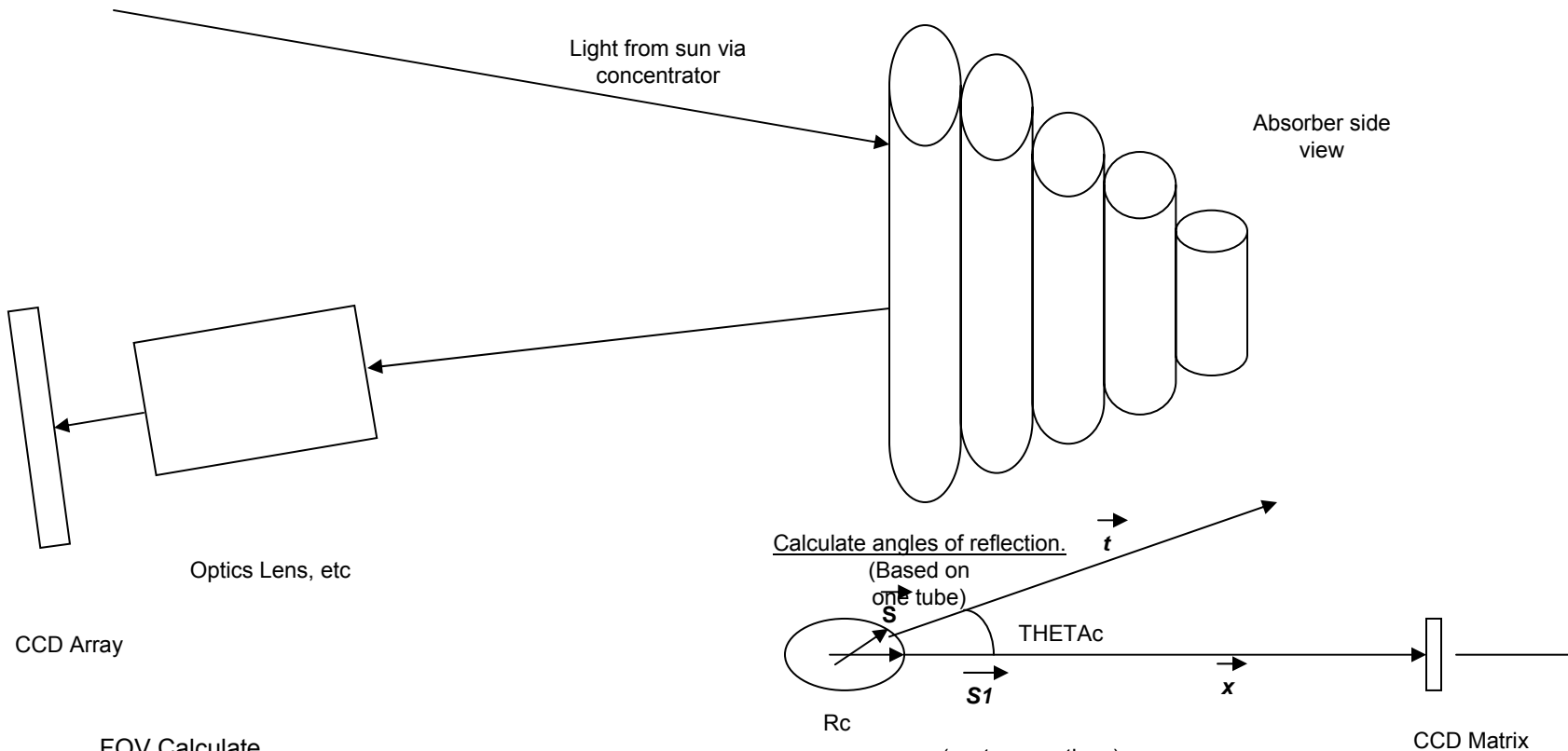
# Focus Parameters



- **The focal beam of a real concentrator is a distorted and spread Gaussian; since a non-imaging concentrator can have large aberrations and non-zero slope errors, the focal beam would not perform ideally.**
- **Maximum intensity is related to maximum temperature. However, this parameter is not enough to indicate when the focal maximum is above or below the absorber instead of having its focal maximum exactly on the absorber plane.**
- **The intensity on the absorber should be approximately symmetric for an on focus condition and may be utilized for coarse positioning as the focal beam is coming onto the absorber.**
- **Output temperature of the propellant could also be used as a determinant for on focus condition.**
- **Control to 0.1 inch and 0.1 degree are the required control tolerances.**



# Schematic of Proposed Solution



## FOV Calculate

Lens:  $f = 100 \text{ mm}$

Pixel in camera :  $7.4 \text{ um}$

Distance from lens to absorber:  $1 \text{ m}$

One pixel then covers:  
 $(1000/100) * 7.4 \text{ um} = 0.074 \text{ mm}$

So that the FOV is equal to:

H:  $657 * 0.074 = 48.62 \text{ mm}$  (2 inch)

V:  $495 * 0.074 = 36.63$  (1.4 inch)

THETA<sub>c</sub> is the angle we are trying to find.

$$\mathbf{X.r}/|\mathbf{X}| = \mathbf{t.r}/|\mathbf{t}|$$

Approved for public release;  
distribution unlimited.