

SHIP PRODUCTION COMMITTEE
FACILITIES AND ENVIRONMENTAL EFFECTS
SURFACE PREPARATION AND COATINGS
DESIGN/PRODUCTION INTEGRATION
HUMAN RESOURCE INNOVATION
MARINE INDUSTRY STANDARDS
WELDING
INDUSTRIAL ENGINEERING
EDUCATION AND TRAINING

October 1980
NSRP 0007

THE NATIONAL SHIPBUILDING RESEARCH PROGRAM

Proceedings of the REAPS Technical Symposium

Paper No. 2: An Information Service for the Maritime Industry

U.S. DEPARTMENT OF THE NAVY
CARDEROCK DIVISION,
NAVAL SURFACE WARFARE CENTER

Report Documentation Page

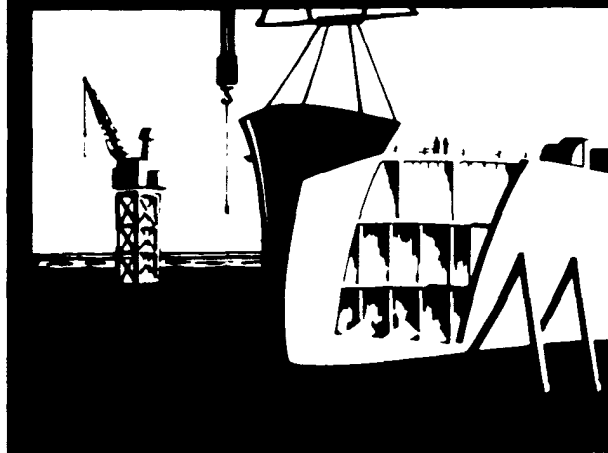
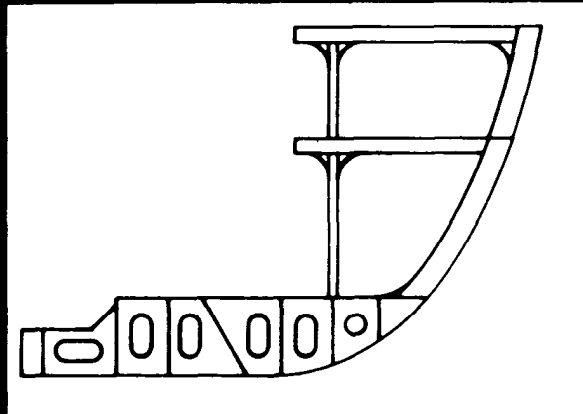
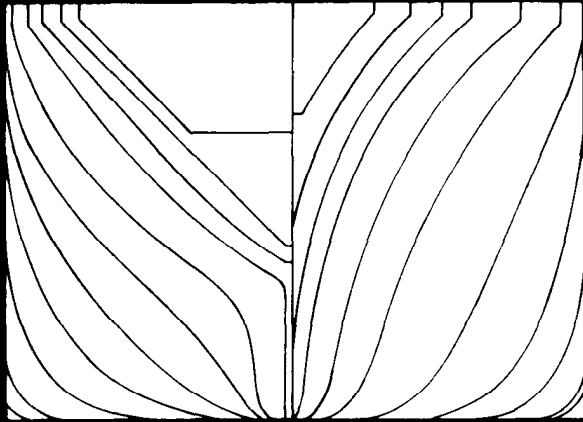
Form Approved
OMB No. 0704-0188

Public reporting burden for the collection of information is estimated to average 1 hour per response, including the time for reviewing instructions, searching existing data sources, gathering and maintaining the data needed, and completing and reviewing the collection of information. Send comments regarding this burden estimate or any other aspect of this collection of information, including suggestions for reducing this burden, to Washington Headquarters Services, Directorate for Information Operations and Reports, 1215 Jefferson Davis Highway, Suite 1204, Arlington VA 22202-4302. Respondents should be aware that notwithstanding any other provision of law, no person shall be subject to a penalty for failing to comply with a collection of information if it does not display a currently valid OMB control number.

1. REPORT DATE OCT 1980		2. REPORT TYPE N/A		3. DATES COVERED -	
4. TITLE AND SUBTITLE The National Shipbuilding Research Program Proceedings of the REAPS Technical Symposium Paper No. 2: An Information Service for the Maritime Industry				5a. CONTRACT NUMBER	
				5b. GRANT NUMBER	
				5c. PROGRAM ELEMENT NUMBER	
6. AUTHOR(S)				5d. PROJECT NUMBER	
				5e. TASK NUMBER	
				5f. WORK UNIT NUMBER	
7. PERFORMING ORGANIZATION NAME(S) AND ADDRESS(ES) Naval Surface Warfare Center CD Code 2230 - Design Integration Tools Building 192 Room 128 9500 MacArthur Blvd Bethesda, MD 20817-5700				8. PERFORMING ORGANIZATION REPORT NUMBER	
9. SPONSORING/MONITORING AGENCY NAME(S) AND ADDRESS(ES)				10. SPONSOR/MONITOR'S ACRONYM(S)	
				11. SPONSOR/MONITOR'S REPORT NUMBER(S)	
12. DISTRIBUTION/AVAILABILITY STATEMENT Approved for public release, distribution unlimited					
13. SUPPLEMENTARY NOTES					
14. ABSTRACT					
15. SUBJECT TERMS					
16. SECURITY CLASSIFICATION OF:			17. LIMITATION OF ABSTRACT SAR	18. NUMBER OF PAGES 8	19a. NAME OF RESPONSIBLE PERSON
a. REPORT unclassified	b. ABSTRACT unclassified	c. THIS PAGE unclassified			

DISCLAIMER

These reports were prepared as an account of government-sponsored work. Neither the United States, nor the United States Navy, nor any person acting on behalf of the United States Navy (A) makes any warranty or representation, expressed or implied, with respect to the accuracy, completeness or usefulness of the information contained in this report/manual, or that the use of any information, apparatus, method, or process disclosed in this report may not infringe privately owned rights; or (B) assumes any liabilities with respect to the use of or for damages resulting from the use of any information, apparatus, method, or process disclosed in the report. As used in the above, "Persons acting on behalf of the United States Navy" includes any employee, contractor, or subcontractor to the contractor of the United States Navy to the extent that such employee, contractor, or subcontractor to the contractor prepares, handles, or distributes, or provides access to any information pursuant to his employment or contract or subcontract to the contractor with the United States Navy. ANY POSSIBLE IMPLIED WARRANTIES OF MERCHANTABILITY AND/OR FITNESS FOR PURPOSE ARE SPECIFICALLY DISCLAIMED.



R
E
A
P
S

RESEARCH
AND
ENGINEERING
FOR
AUTOMATION
AND
PRODUCTIVITY
IN
HIGH BUILDING

**Proceedings of the
REAPS Technical Symposium
October 14-16, 1980
Philadelphia, Pennsylvania**

AN INFORMATION SERVICE FOR THE MARITIME INDUSTRY

**Davis G. Mellor
Manager
Maritime Research Information Service
National Academy of Sciences
Washington, D. C.**

ABSTRACT

The paper reviews the services and publications available to the maritime industry through the Maritime Research Information Service (MRIS). This is a computer based service sponsored by the Maritime Administration and operated by the Transportation Research Board of the National Research Council. Information distribution to the maritime industry is provided through monthly and semi-annual publications to subscribers, special bibliographies, computerized retrievals on request, and on-line retrieval directly through the Lockheed DIALOG System

The Maritime Research Information Service (MRIS) has been in operation for over nine years. It is sponsored by the U.S. Maritime Administration and operated by the Transportation Research Board of the National Research Council for the benefit of the maritime industry. The purpose of the service is to provide rapid access to maritime information that has been brought together from numerous sources.

MRIS selects, abstracts, and stores maritime information that relates to the design, building and operation of commercial vessels. The information covers vessels that operate on inland waterways as well as in foreign commerce.

The MRIS data base now contains 20,000 abstracts of reports, journal articles and conference proceedings. Storage of this information in the computer at the National Research Council makes it possible to retrieve information on request, and to use the output to produce publications.

The sources of information for MRIS input consist of articles from the various maritime journals (U.S. and foreign), reports resulting from government sponsored research, conference proceedings, and papers from technical societies such as SNAME.

The maritime information in MRIS is from international as well as domestic sources. The major input of overseas maritime information is covered through exchange agreements with the British Ship Research Association, the Norwegian Ship Research Institute, and membership in foreign technical societies.

Basically MRIS provides information in four different ways. First - to subscribers through two publications:

MRIS Abstracts is issued in June and December each year. Each issue covers all the information collected during each six month period and has two major divisions: abstracts of reports and journal papers, and summaries of ongoing research. The abstracts and summaries are grouped under 24 subject areas that are listed later in the paper. In addition, each issue of the Abstracts has a keyword index, a list of authors, and a list of publishers and performing or publishing agencies.

Current Awareness Service is issued each month and contains abstracts of published reports and papers as well as summaries of ongoing research that were abstracted during the month. The format is the same as MRIS ABSTRACTS, but without indexes. In addition, each issue contains information on maritime meetings and conferences.

Second - on-request computer retrievals on specific topics. These generally are handled very simply by a telephone call to one of the MRIS maritime information specialists.

Third - U.S. and Canadian users can now search the MRIS data base via the Lockheed DIALOG on-line retrieval system. This new mode of access to maritime information makes it possible for users to search for information on specific questions and learn immediately of information that is contained in the data base. Applicable Abstracts can be displayed at the user's terminal or may be ordered through Lockheed's off-line printout service. Each abstract indicates where the user may acquire the corresponding report or article that is represented by the abstract.

Present U.S. and Canadian users of DIALOG data bases do not need to make additional arrangements with Lockheed to use the MRIS data base. U.S. and Canadian Organizations who are not present DIALOG users should communicate with Lockheed to receive an order form for on-line use and an information package that describes all DIALOG services and how to use them * At present, there is no provision for use by overseas organizations.

Fourth - Special publications represent the last type of MRIS output. Generally these are bibliographies with abstracts. Four bibliographies of this type, already published, are Marine System in Frigid Environments, March 1978; Waterborn Transit, October 1978 and Maritime Information Sources: A Guide to Current Date, August 1979 and Dry Bulk Carriers, Cargos and Terminals, April 1980.

All information abstracted and stored in the data base is classified according to one of the following 24 categories:

- 01 Arctic and Cold Weather Operations
- 02 Air Conditioning, Heating and Refrigeration
- 03 Auxiliaries
- 04 Cargo and Materials Handling
- 05 Corrosion, Fouling and Protection
- 06 Electric Generation and Distribution
- 07 Experimental Ships and Special Type of Craft
- 08 Lubrication, Fuels and Combustion Technology
- 09 Management and Advanced Planning
- 10 Maritime Labor, Education and Training
- 11 Marketing and Traffic Management
- 12 Materials
- 13 Navigation, Communications, and Detection
- 14 Pollution Abatement and Control
- 15 Ports and Waterways

*Further information on Lockheed's DIALOG on-line retrieval system may be obtained from Customer Services, 3460 Hillview Ave., Palo Alto, CA 94304. In the continental United States, the TOLL FREE number is (800) 227-1960, except California. California users may call TOLL FREE (800) 982-5838. A Customer Services representative may also be reached for direct assistance on (415) 493-4411 ext. 45412.

- 16 Propellers, Gear Trains, Shafting, and Couplings
- 17 Propulsion Machinery
- 18 Safety and Damage Control
- 19 Ship Construction, Conversion and Repair
- 20 Ship Design and Analyses
- 21 Ship Handling and Control Systems
- 22 Ship Operation
- 23 Strength of Materials and Structural Analysis
- 24 Trade Development and International Commerce

MRIS is one of four modally oriented transportation information services operated by the Transportation Research Board. The other three are the Highway (HRIS), Railroad (RRIS), and Air Transport (ATRIS) research information services. Since all four modes use the same software and computer, it is possible to provide multimodal retrievals when required by a requestor's need for transportation information.

There are additional sources of information that can be tapped only through voluntary cooperation. These consist of the many individuals, companies, state and local agencies who collect maritime information or produce reports in the maritime field. If these reports are forwarded to MRIS, on Loan for input, the service can provide greater indepth output for all users.

We believe that cooperation of this type by people seeking specific maritime information as well as the agencies that generate information, can only improve the quality and usefulness of the service.

For further information about MRIS, Write or Call:

MARITIME RESEARCH INFORMATION SERVICE
2101 Constitution Avenue, N.W.
Washington, D.C. 20418
Tel: (202) 389-6687 or 6452

Additional copies of this report can be obtained from the
National Shipbuilding Research and Documentation Center:

<http://www.nsnet.com/docctr/>

Documentation Center
The University of Michigan
Transportation Research Institute
Marine Systems Division
2901 Baxter Road
Ann Arbor, MI 48109-2150

Phone: 734-763-2465
Fax: 734-763-4862
E-mail: Doc.Center@umich.edu