



Recombinant com1 Attachment to Polystyrene Beads: A Surface Display Mimic for *C. burnetii*

**Dan Read, Ph.D.
Battelle Dugway Operations
Life Sciences Division
Dugway Proving Ground
readd@dpg.army.mil**

Report Documentation Page

Form Approved
OMB No. 0704-0188

Public reporting burden for the collection of information is estimated to average 1 hour per response, including the time for reviewing instructions, searching existing data sources, gathering and maintaining the data needed, and completing and reviewing the collection of information. Send comments regarding this burden estimate or any other aspect of this collection of information, including suggestions for reducing this burden, to Washington Headquarters Services, Directorate for Information Operations and Reports, 1215 Jefferson Davis Highway, Suite 1204, Arlington VA 22202-4302. Respondents should be aware that notwithstanding any other provision of law, no person shall be subject to a penalty for failing to comply with a collection of information if it does not display a currently valid OMB control number.

1. REPORT DATE 01 OCT 2005	2. REPORT TYPE N/A	3. DATES COVERED -	
4. TITLE AND SUBTITLE Recombinant com1 Attachment to Polystyrene Beads: A Surface Display Mimic for C. burnetii		5a. CONTRACT NUMBER	
		5b. GRANT NUMBER	
		5c. PROGRAM ELEMENT NUMBER	
6. AUTHOR(S)		5d. PROJECT NUMBER	
		5e. TASK NUMBER	
		5f. WORK UNIT NUMBER	
7. PERFORMING ORGANIZATION NAME(S) AND ADDRESS(ES) Battelle Dugway Operations Life Sciences Division Dugway Proving Ground		8. PERFORMING ORGANIZATION REPORT NUMBER	
9. SPONSORING/MONITORING AGENCY NAME(S) AND ADDRESS(ES)		10. SPONSOR/MONITOR'S ACRONYM(S)	
		11. SPONSOR/MONITOR'S REPORT NUMBER(S)	
12. DISTRIBUTION/AVAILABILITY STATEMENT Approved for public release, distribution unlimited			
13. SUPPLEMENTARY NOTES See also ADM001851, Proceedings of the 2003 Joint Service Scientific Conference on Chemical & Biological Defense Research, 17-20 November 2003. , The original document contains color images.			
14. ABSTRACT			
15. SUBJECT TERMS			
16. SECURITY CLASSIFICATION OF:			17. LIMITATION OF ABSTRACT
a. REPORT unclassified	b. ABSTRACT unclassified	c. THIS PAGE unclassified	UU
			18. NUMBER OF PAGES 39
			19a. NAME OF RESPONSIBLE PERSON



Biological Agent Simulants

- **Need for biological simulants (point detection)**
 - Actual biological materials release is dangerous and restricted by law
- **Replace live agent but maintain agent properties:**
 - Physical (size, aerosolization...)
 - Detection (surface antigens)

**Joint Biological Point
Detection System
(JBPDS)**





Current Simulants Used for Field Tests

- *Bacillus atrophaeus* (BG)--Gram-pos. spore former
- *Erwinia herbicola* (EH)--Gram-neg. vegetative
- Male-specific bacteriophage type 2 (MS2)--viral
- Ovalbumin (OV)--protein toxin

Good preservation of many physical characteristics

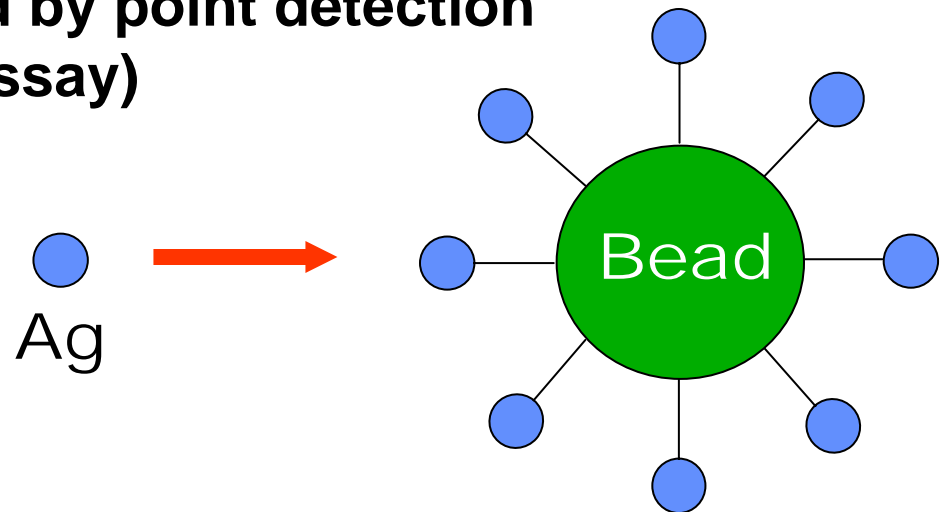
Detection properties (surface antigens) not represented

Need more realistic simulants for point detection testing



Bead Technology Approach

- Identify agent-specific surface antigen
- Produce antigen (recombinant)
- Attach recombinant antigen to surface of a microsphere (polystyrene bead)
 - Bead simulant mimics surface of agent
 - Potentially detected by point detection systems (immunoassay)





Bead Simulant for *Coxiella burnetii*

- **Coxiella Outer Membrane Protein 1 (com1)**
 - **Surface protein of *Coxiella burnetii***
 - **Most immunodominant protein**
 - **Unique to *Coxiella***
 - **Good target antigen candidate**



Bead Simulant Project Goals

Test feasibility of attaching recombinant antigen to polystyrene beads

- **Test two different approaches for antigen attachment**
 - **Passive adsorption (hydrophobic)**
 - **Covalent linkage (covalent bond)**
- **Beads bind com1 antigen?**
- **Bound com1 recognized by α -*Coxiella* Abs? (Bead simulant mimic *Coxiella* surface?)**



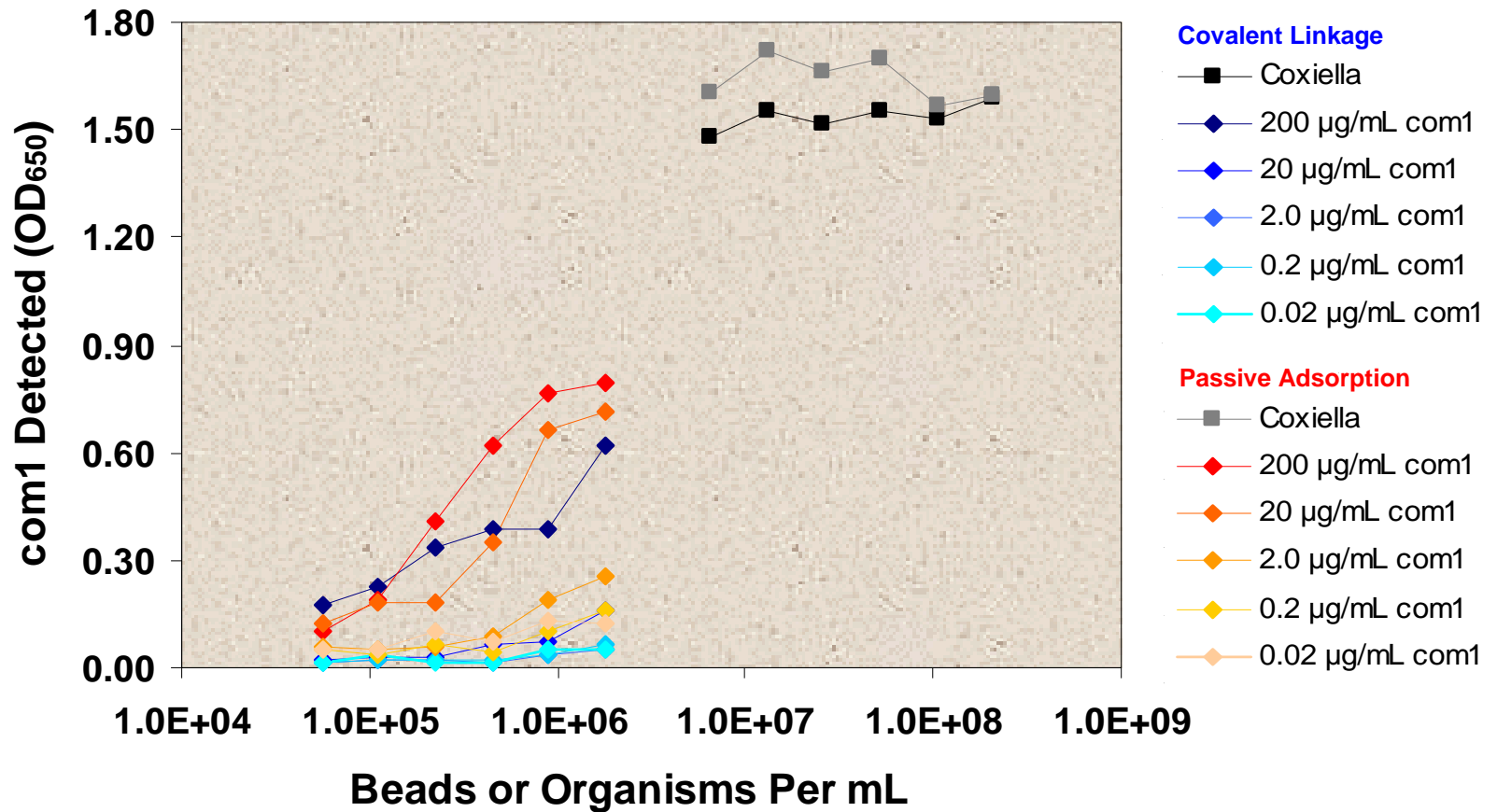
ELISA

1. Determine if com1 attached to beads
 1. Passive adsorption
 2. Covalent coupling
2. Compare antigenicity of com1 via passive or covalent attachment to beads vs. *Coxiella*
 - 1° Antibody: α -com1 mono/polyclonal antibody
 - 2° Antibody: conjugated to HRP



Detection of com1 Attached to Beads by Passive Adsorption and Covalent Linkage

α -Coxiella Polyclonal Antibody (PEO-CBD)





Flow Cytometry

1. Compare size distribution of passive and covalent beads vs. *Coxiella*
 - “Forward scatter” (relative size)
2. Compare com1 binding distribution across each bead population vs. *Coxiella*
 - Relative fluorescence
 - 1° Antibody: α -com1 monoclonal antibody
 - 2° Antibody: conjugated to FITC

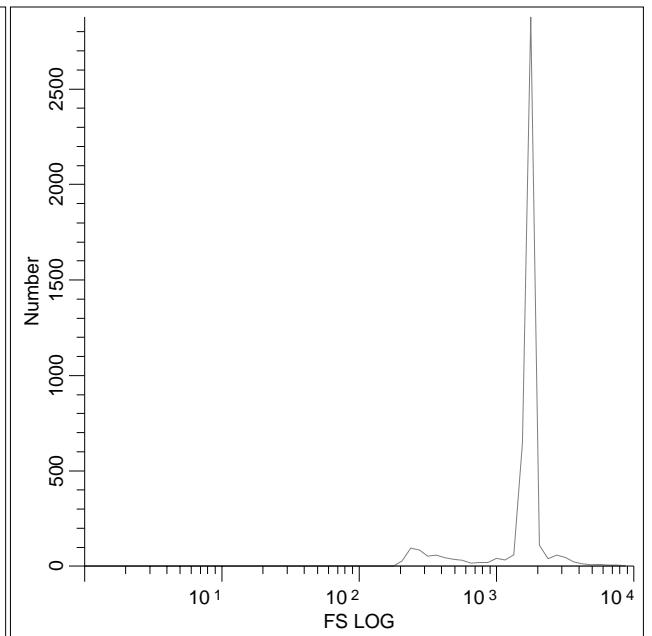
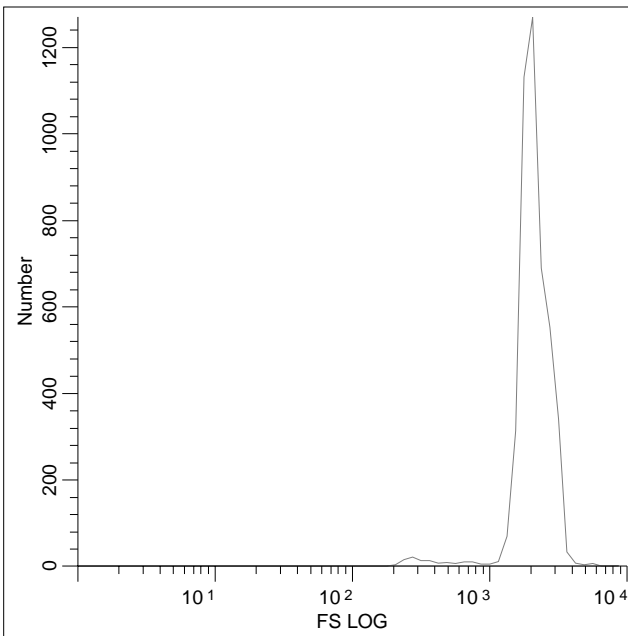
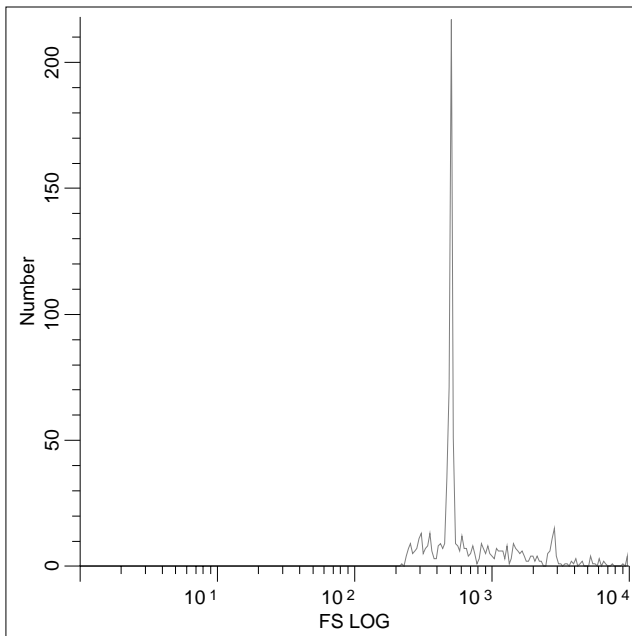


Flow Cytometry of Polystyrene Beads Relative Size Distribution (FS)

Coxiella

Passive Adsorption Beads

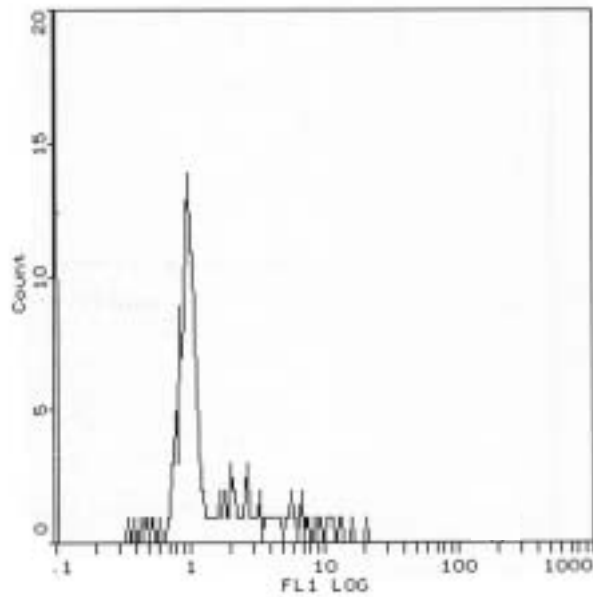
Covalent Coupling Beads



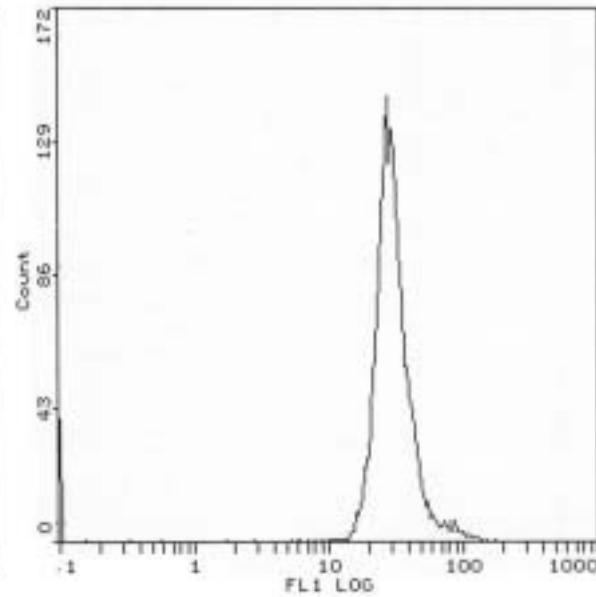


Flow Cytometry of Polystyrene Beads Relative Fluorescence (FL)

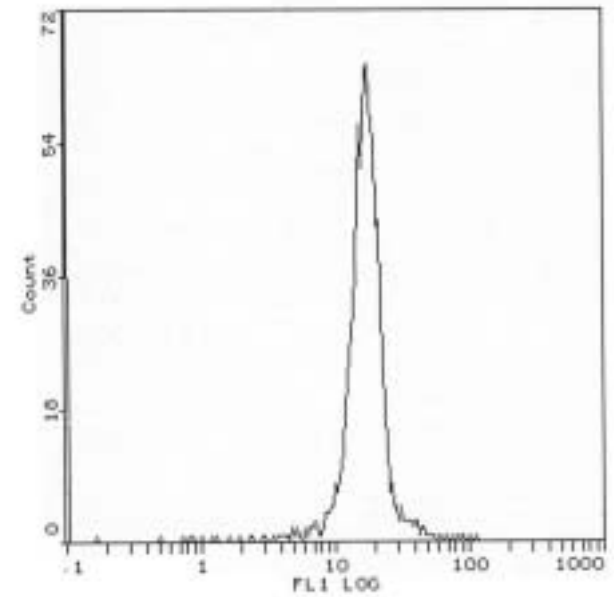
Coxiella



Passive Adsorption Beads



Covalent Coupling Beads



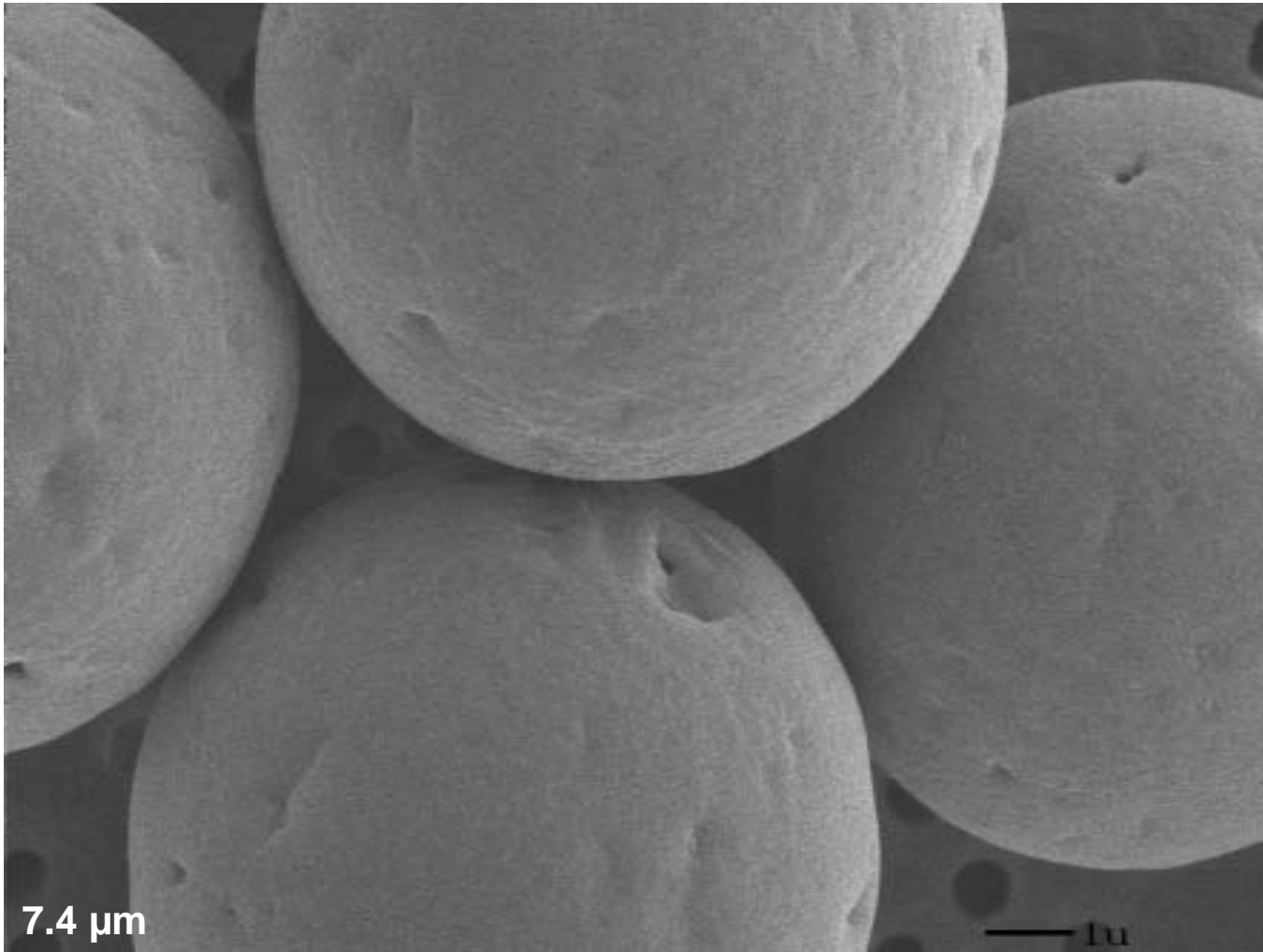


Immuno Scanning Electron Microscopy

- **Compare uniformity of com1 attachment on individual beads (passive vs. covalent)**
 - **1° Antibody: α -com1 monoclonal antibody**
 - **2° Antibody: conjugated to colloidal gold (25 nm)**

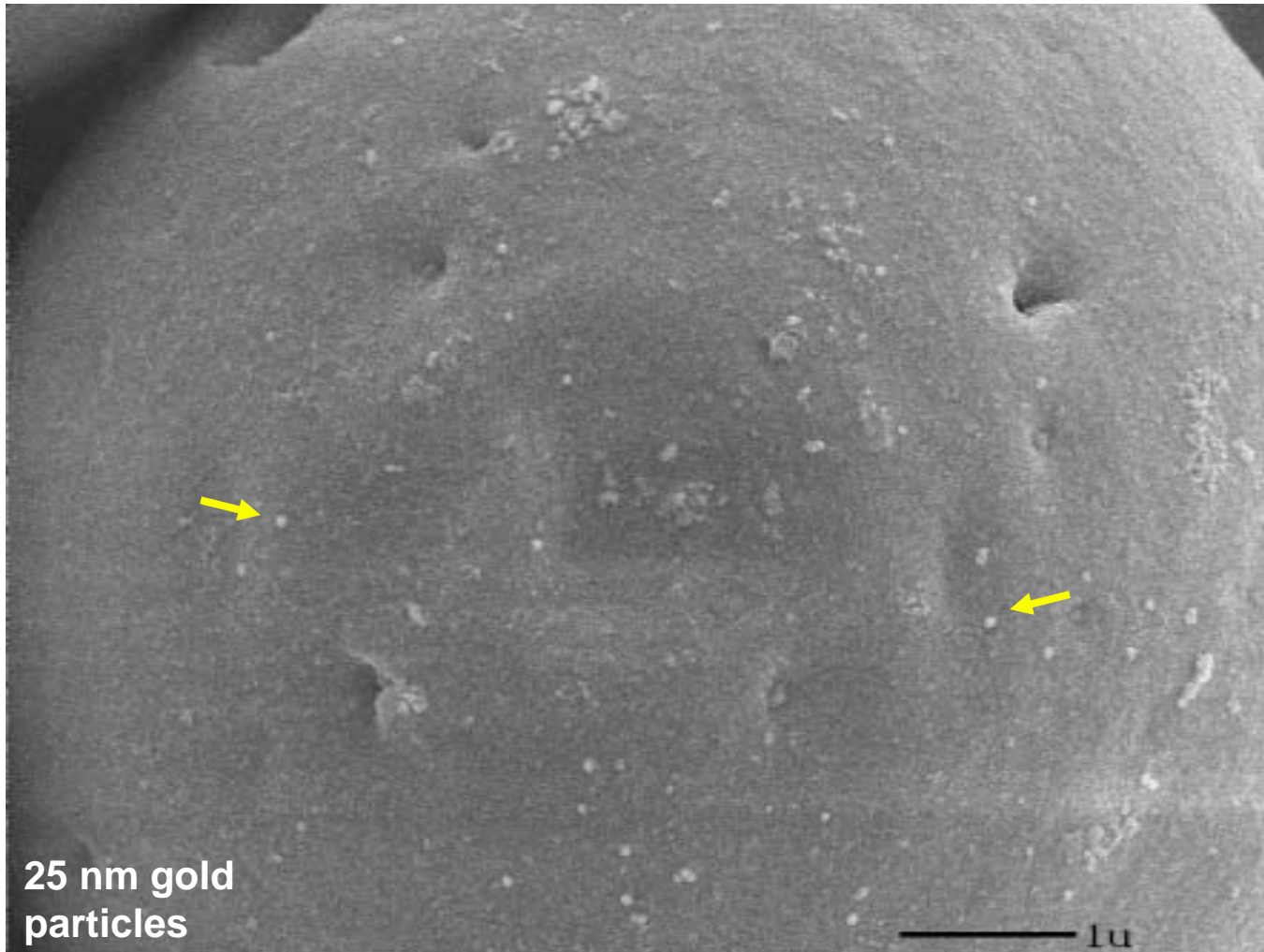


Covalent Coupling Beads—No com1



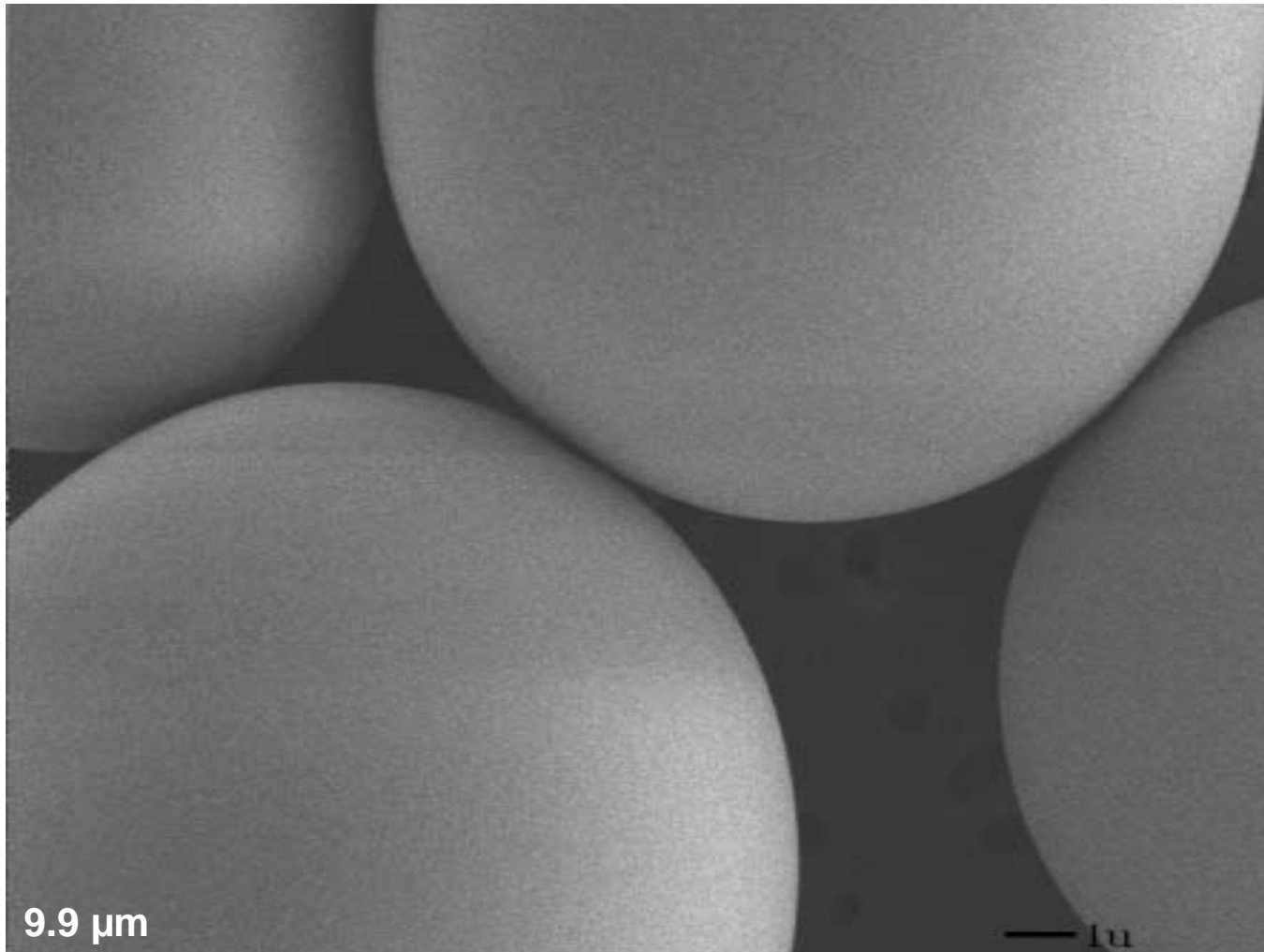


Covalent Coupling Beads—w/ com1



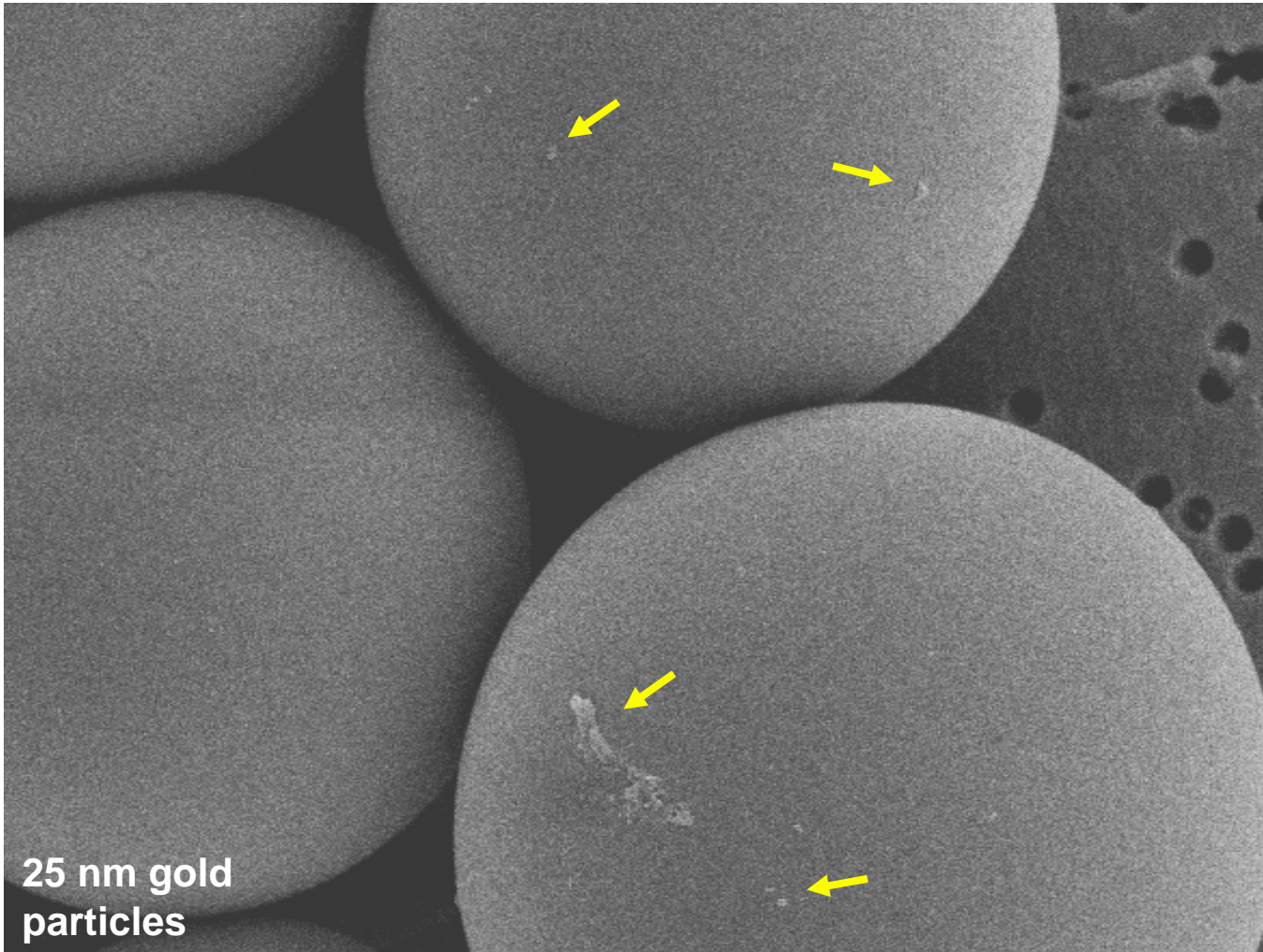


Passive Adsorption Beads—No com1



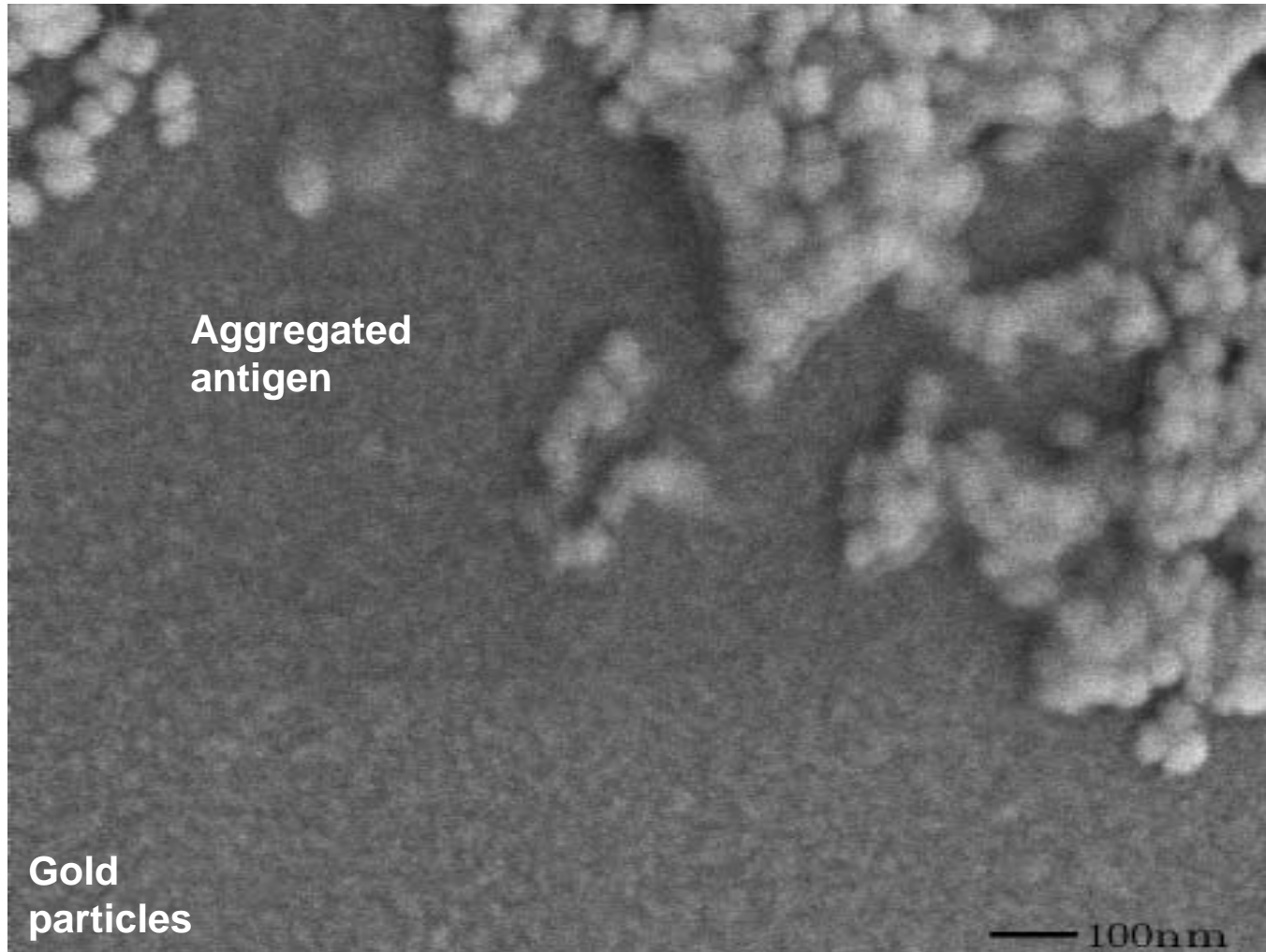


Passive Adsorption Beads—w/ com1





Passive Adsorption Beads—w/ com1





SUMMARY

- **Bead technology is a rapid, functional approach for producing biosimulants for any biological agent**
 - **Surface antigenicity of agent is mimicked**
 - **Physical characteristics are customizable**
- **Produced two bead simulants for *C. burnetii***
 - **Recognized by both poly/monoclonal antibodies**
 - **Levels of bead (com1) detection similar to *Coxiella***
 - **Distribution of com1 across bead populations similar to *Coxiella***
 - **Good surface antigen mimic of *Coxiella***



ACKNOWLEDGEMENTS

- **Dugway Proving Ground
Life Sciences Division**
 - **Richard Warren, Ph.D.**
 - **Steven Burke, Ph.D.**
 - **Dan Carmany**
 - **Tana Robert**
 - **Jim Bragg**
- **Texas A&M University Health Science Center
Dept. Medical Microbiology & Immunology**
 - **James Samuel, Ph.D.**

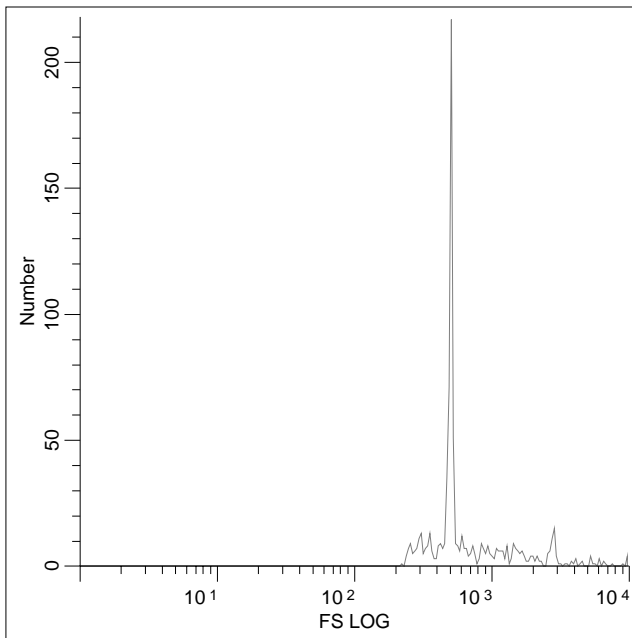


Flow Cytometry of Polystyrene Beads Relative Size Distribution (FS)

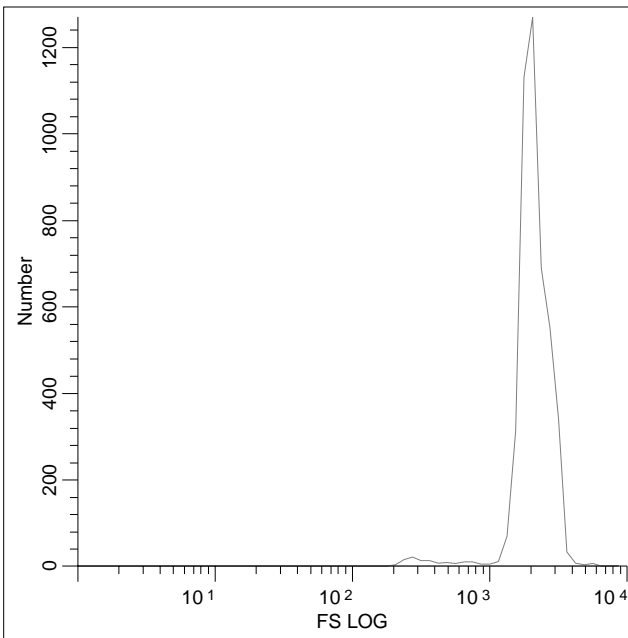
Coxiella

Passive Adsorption Beads

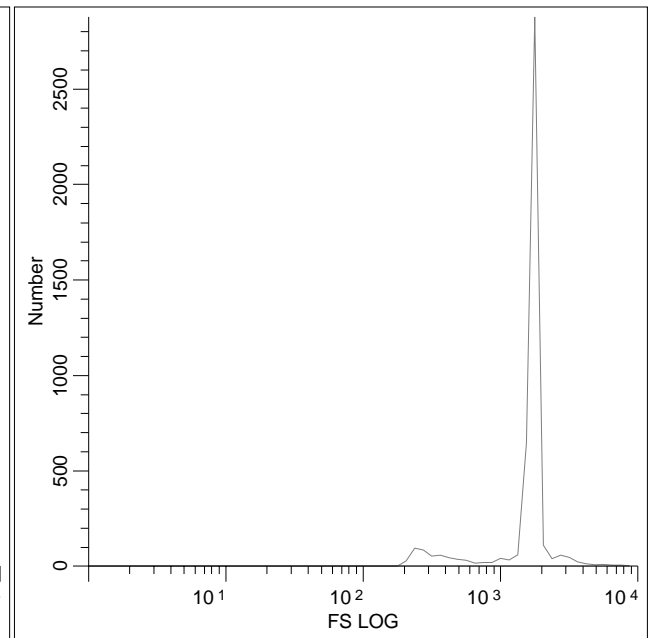
Covalent Coupling Beads



Actual Size: 0.5 μm



9.9 μm



7.4 μm



Biological Point Detection Systems



- Real-time detection of biological agents (on-site)
- Components:
 - Detector/Trigger (BAWS)
 - Collector (Cyclone)
 - Fluid transfer system
 - Identifier (PCR, immunoassay)
- Field-tested with simulants



Joint Biological Point Detection System
(JBPDS)



Two approaches for antigen attachment:

- **Passive adsorption**
 - Attachment due to hydrophobic interactions
 - Positives: fast, easy, relatively inexpensive
 - Negatives: temporary, less stable, antigen partially unfolded (still antigenic?)
- **Covalent coupling**
 - Antigen attached via covalent bonding
 - Positives: permanent, more stable, native (antigenic)
 - Negatives: complex, more expensive procedure

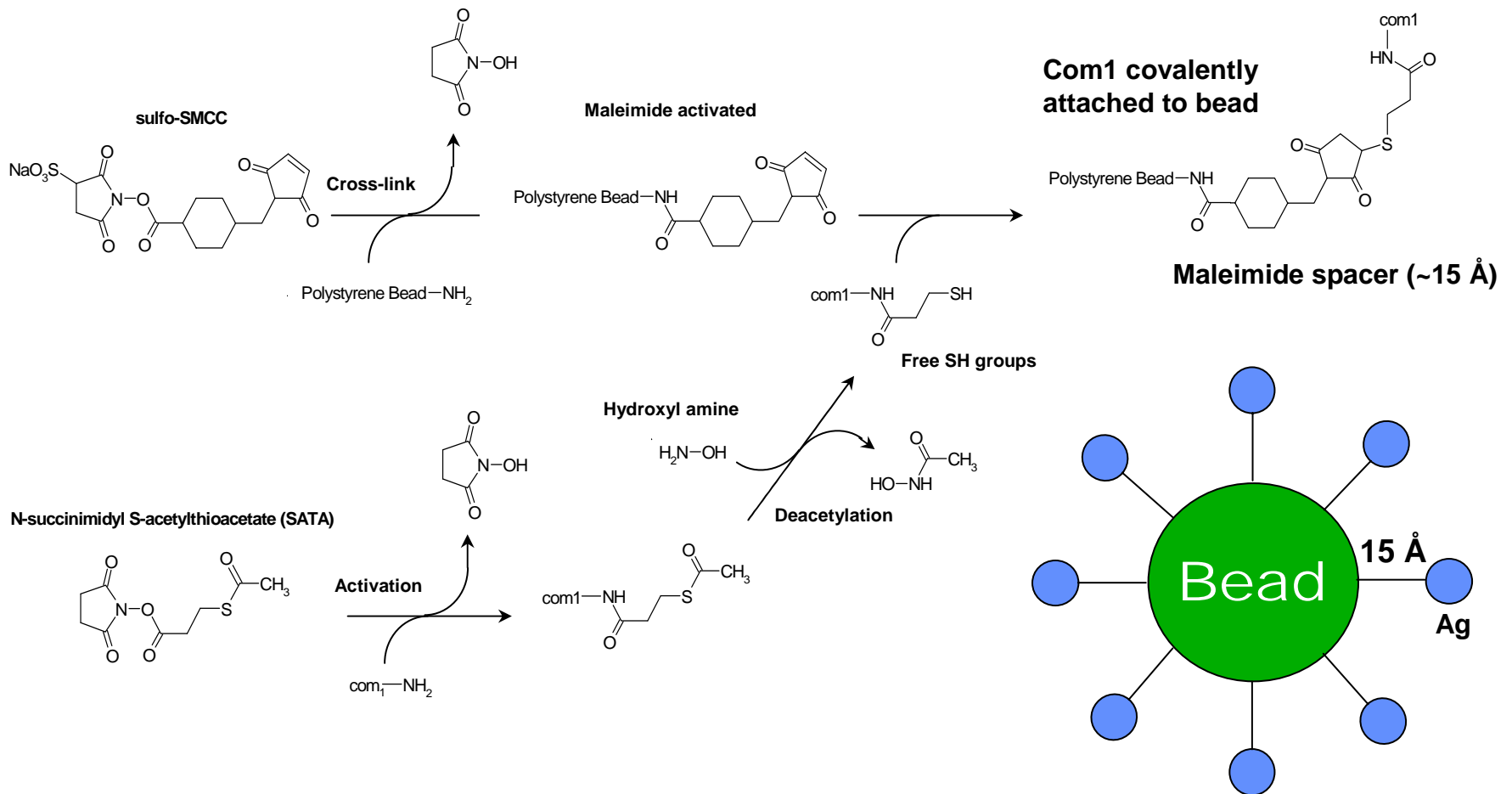


Benefits of Bead Technology

- **Fast, easy—only requires agent-specific recombinant antigen**
- **Customize size and surface antigens**
 - **Mimics physical AND detection properties**
- **Can be potentially used to simulate any biological agent:**
 - **Bacteria—*B. anthracis*...**
 - **Viruses—VEE...**
 - **Toxins—Ricin...**



Covalent Attachment of com1 to NH₂-Modified Polystyrene Beads

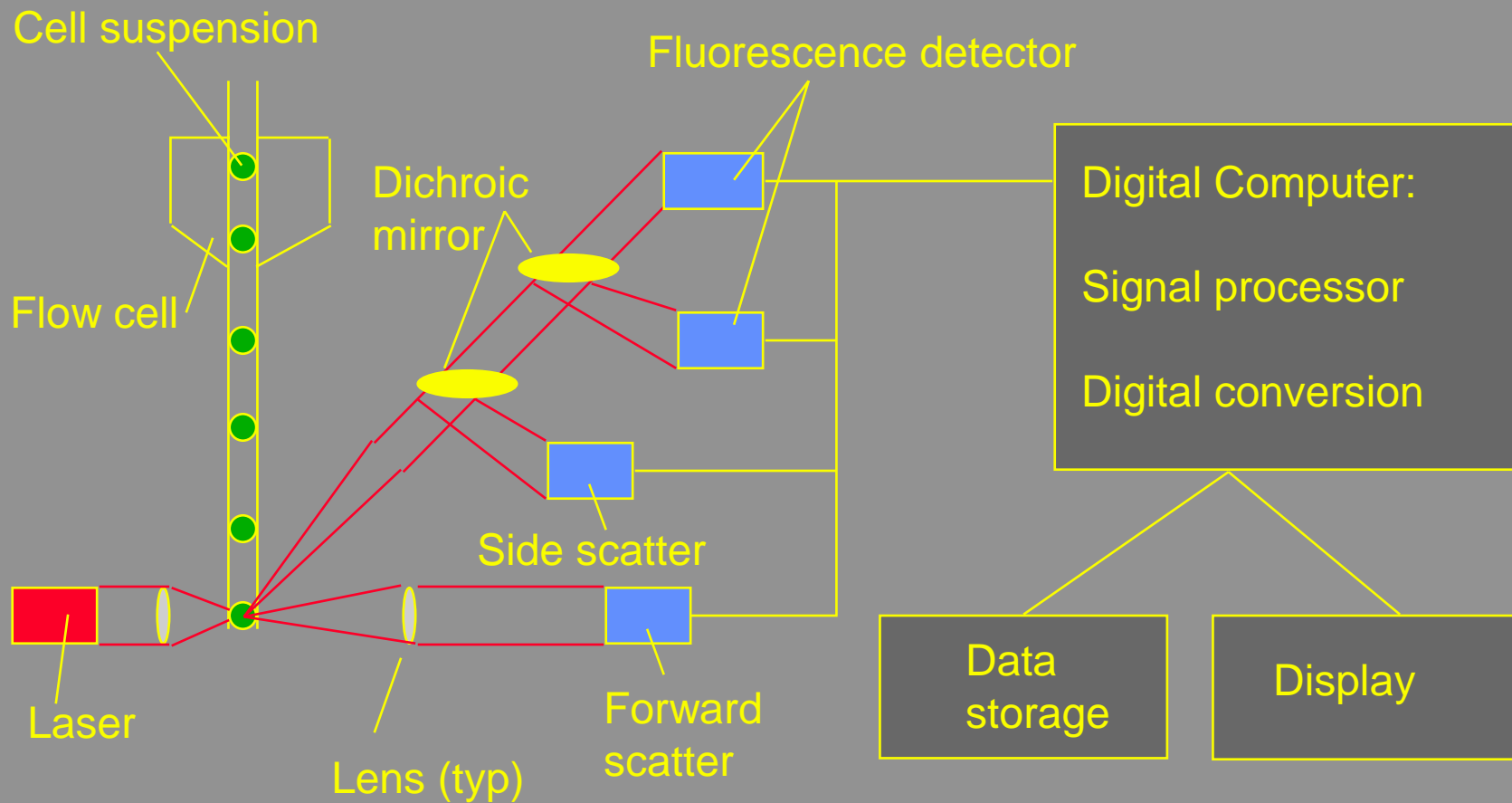




Summary--ELISA

- **com1 attached to beads (adsorbed and covalent)**
- **Mono/polyclonal antibodies detect com1 on both bead preps similar to *Coxiella***
- **Both bead preps sufficient *Coxiella* mimics (surface antigenicity)**

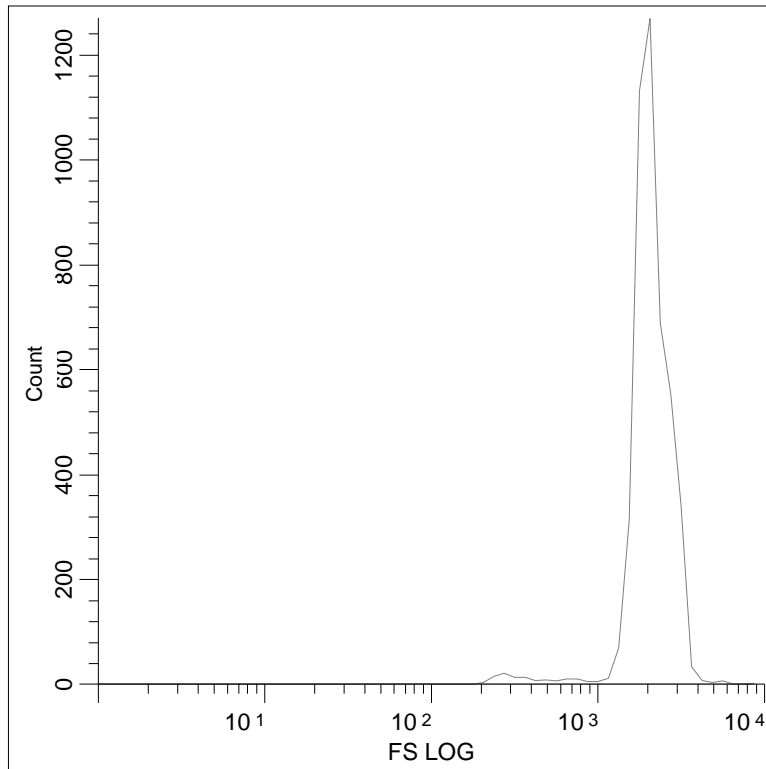
Basic Components of Flow Cytometry



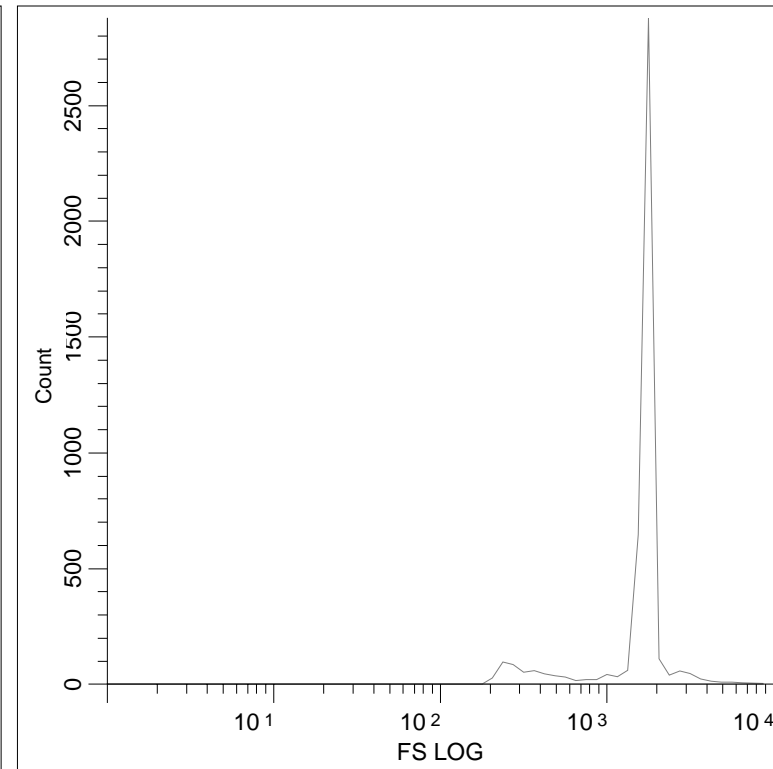


Flow Cytometry of Polystyrene Beads Relative Size Distribution (FS)

Passive Adsorption Beads



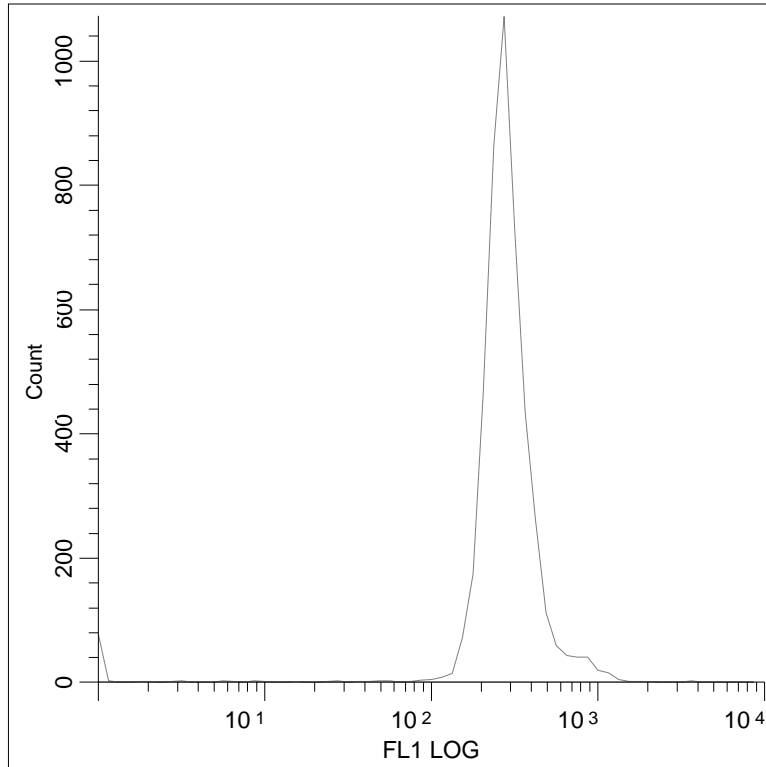
Covalent Coupling Beads



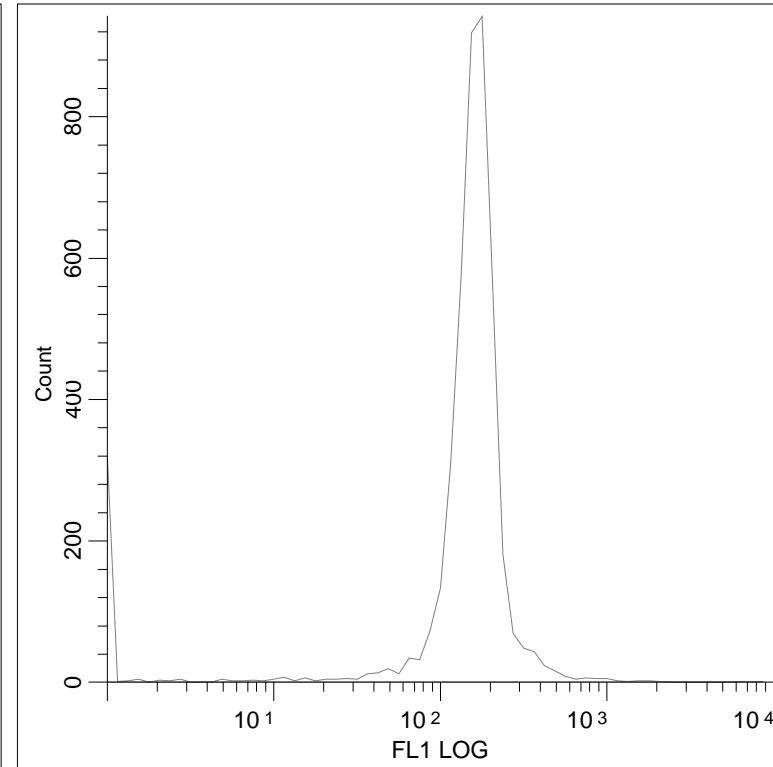


Flow Cytometry of Polystyrene Beads Relative Fluorescence (FL) Distribution

Passive Adsorption Beads



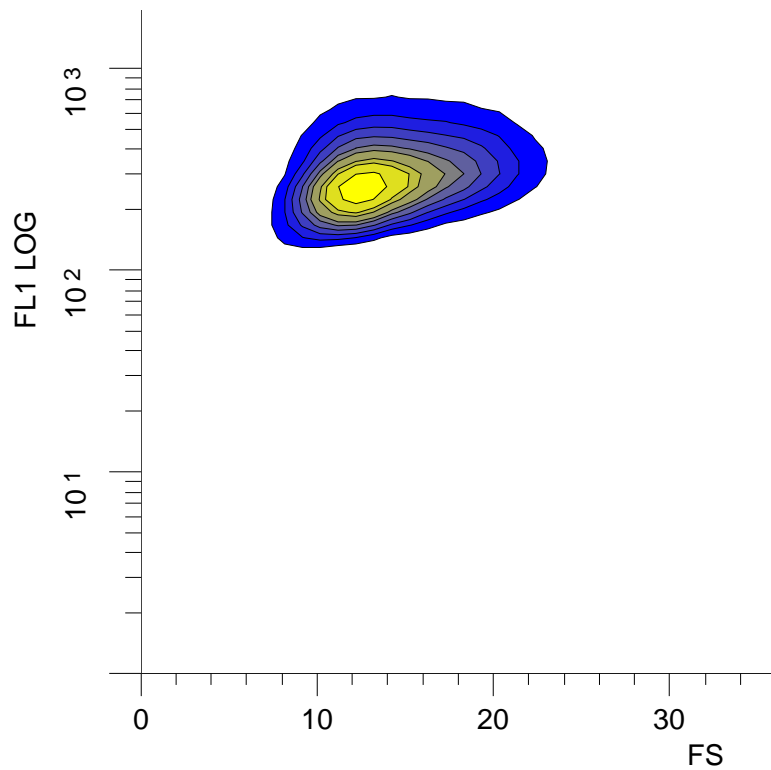
Covalent Coupling Beads



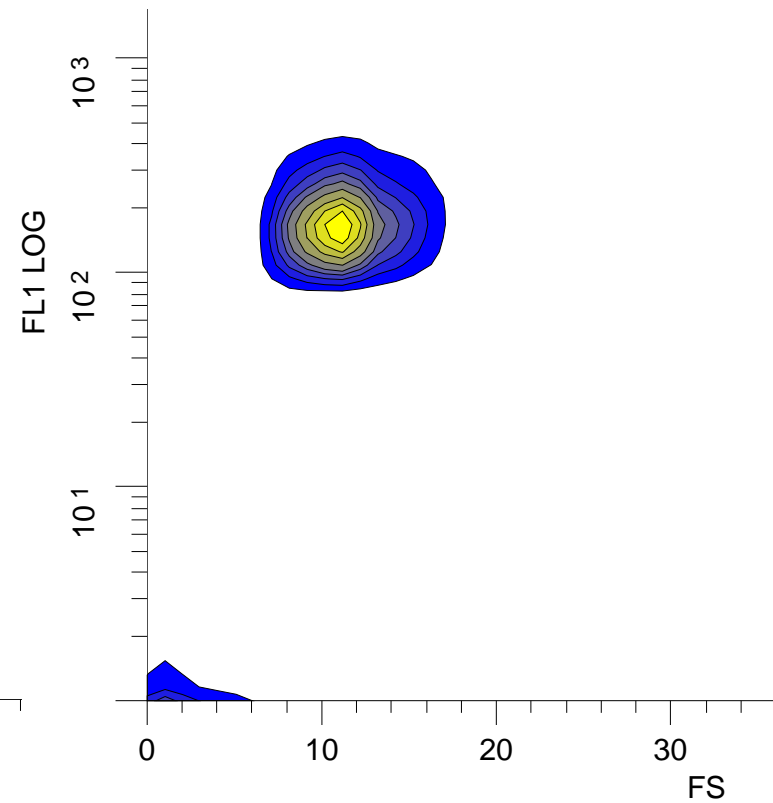


Flow Cytometry of Polystyrene Beads—SS vs FS

Passive Adsorption Beads



Covalent Coupling Beads



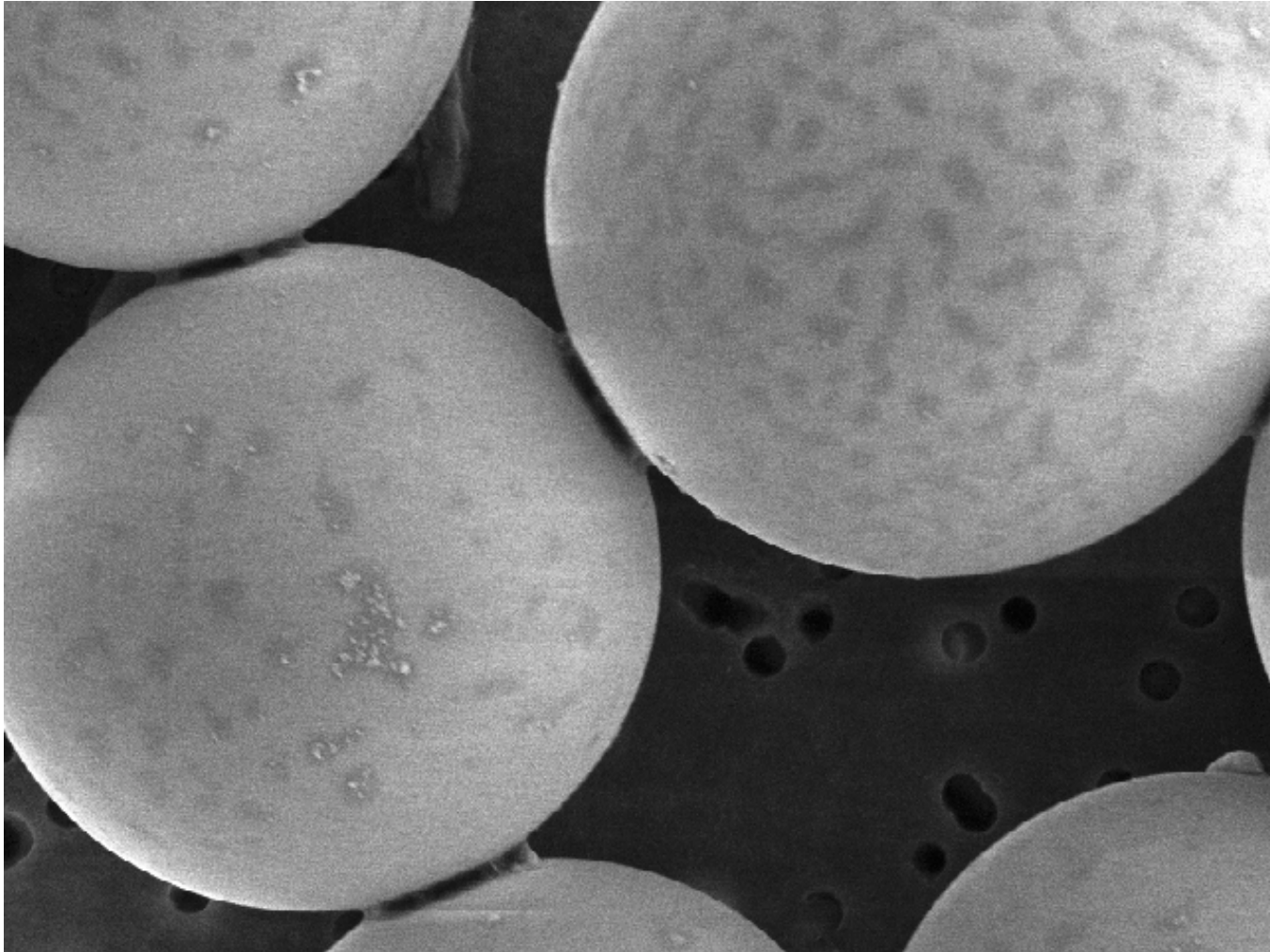


Summary--Flow Cytometry

- **Size distribution of passive adsorption beads is wider than *Coxiella*; covalent bead size distribution similar to *Coxiella***
 - **Controllable**
- **com1 binding (fluorescence) distribution is similar among both bead populations and *Coxiella***

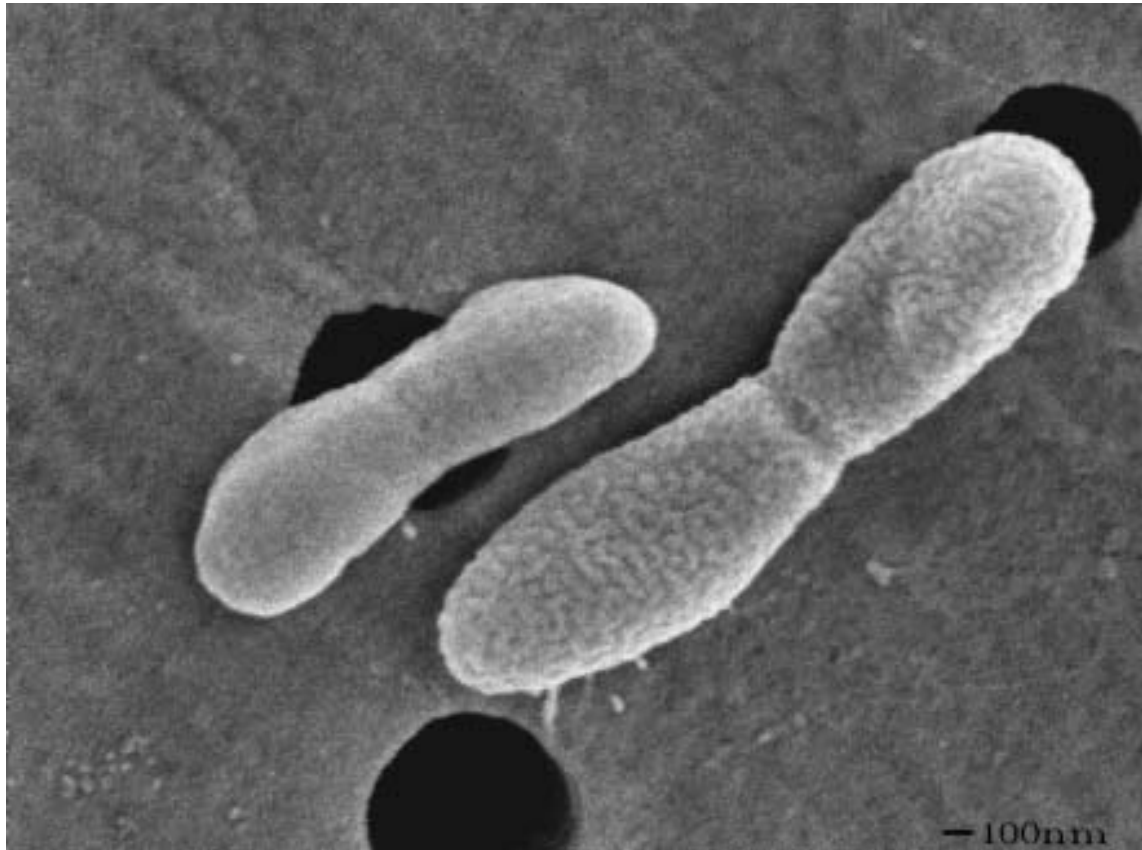


Passive Adsorption Beads—w/ com1



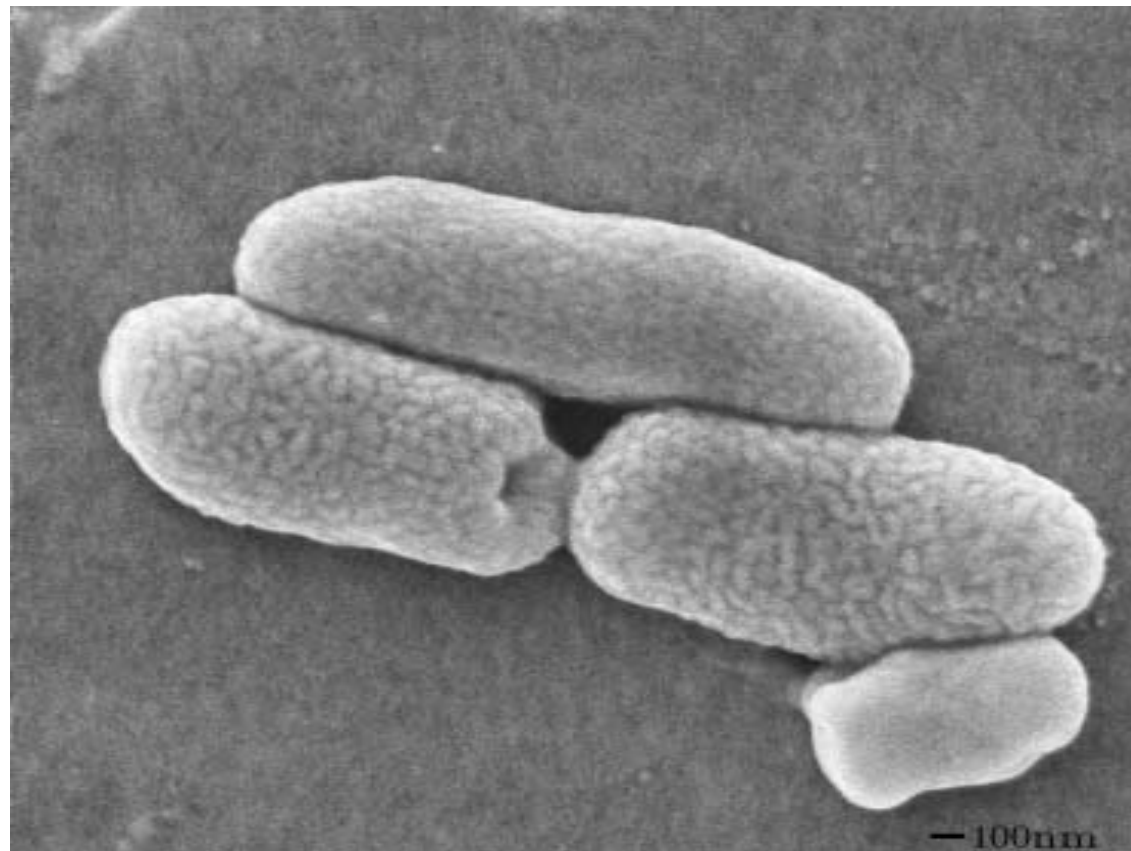


***Coxiella burnetii*—No Antibody**





***Coxiella burnetii*— α com1 Monoclonal Antibody**





Summary--Immuno SEM

- **Uniform coating of com1 on covalent beads**
- **com1 “clumped” (aggregated) on passive adsorption beads**
 - **Does not significantly affect com1 antigenicity**



Poly and Monoclonal Antibody Affinity for com1

Antibody	Antigen	K_D (M)
Poly pDPG	Coxiella	1.2E-08
		2.7E-08
		3.7E-09
		1.4E-08
Poly pDPG	com1	3.7E-08
		2.9E-09
		8.1E-10
		1.4E-08
Mono 11B24	Coxiella	1.7E-09
		3.7E-09
Mono 13A44	Coxiella	4.0E-10
		3.2E-09
		2.2E-09
Mono 11B24	com1	3.4E-09
		4.0E-09
Mono 13A44	com1	3.5E-09
		3.8E-09
		3.7E-09



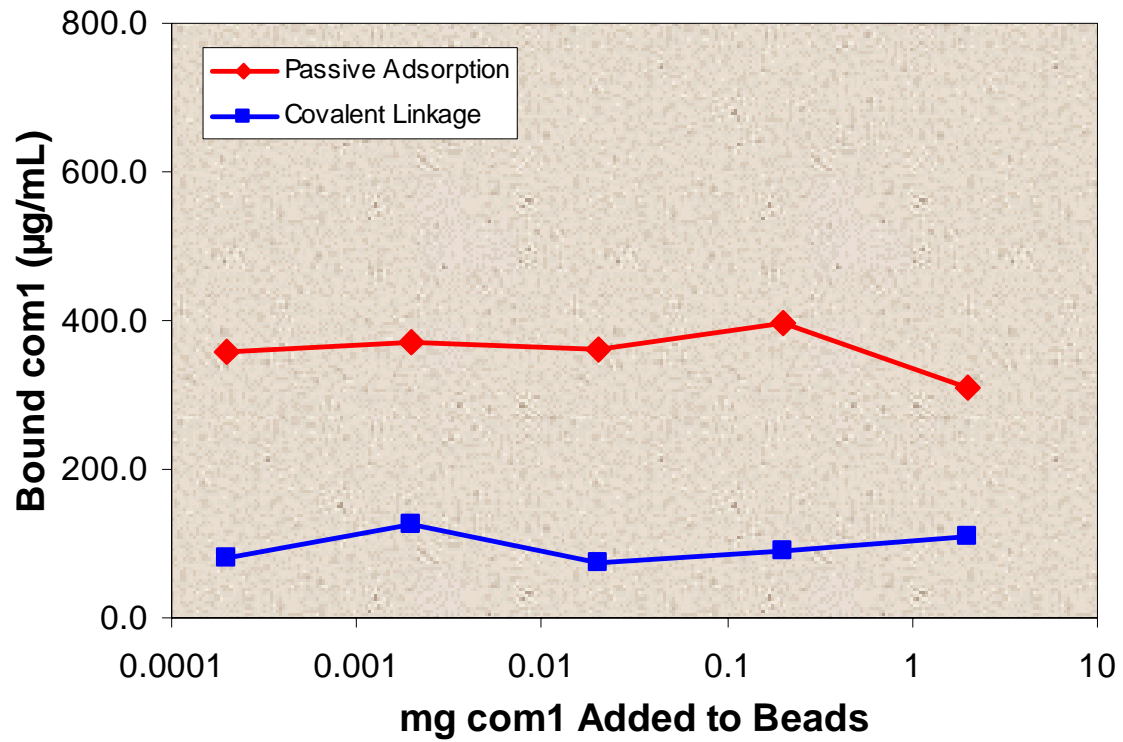
Antibody Avidity/Affinity for *C. burnetii* and com1

Antibody	Class	Antigen	K_D (M)
pDPG	Polyclonal	Coxiella	1.95E-08
	Polyclonal	com1	2.00E-08
11B24/13A44	Monoclonal	Coxiella	2.24E-09
	Monoclonal	com1	3.68E-09

- Purified com1 binds poly/monoclonal Ab similar to killed *C. burnetii* samples
- com1 is a good mimic for *C. burnetii*

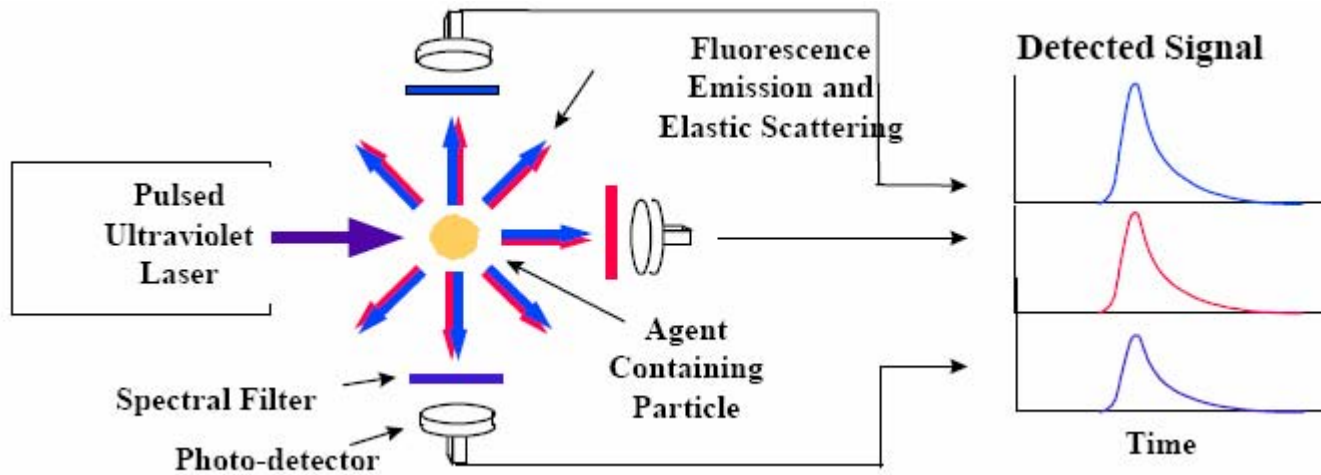


Concentration of com1 on Polystyrene Beads





Three Channel Sensor (BAWS)



Elastic Scattering and Fluorescence Emission Spectrum

