

Award Number: W81XWH-04-1-0919

TITLE: Function of Periecan Domain I in Prostate Cancer

PRINCIPAL INVESTIGATOR: Dr. Chu Zhang  
Dr. Mary C. Farach-Carson

CONTRACTING ORGANIZATION: University of Delaware  
Newark, DE 19716

REPORT DATE: October 2006

TYPE OF REPORT: Annual Summary

PREPARED FOR: U.S. Army Medical Research and Materiel Command  
Fort Detrick, Maryland 21702-5012

DISTRIBUTION STATEMENT: Approved for Public Release;  
Distribution Unlimited

The views, opinions and/or findings contained in this report are those of the author(s) and should not be construed as an official Department of the Army position, policy or decision unless so designated by other documentation.

# REPORT DOCUMENTATION PAGE

*Form Approved*  
*OMB No. 0704-0188*

Public reporting burden for this collection of information is estimated to average 1 hour per response, including the time for reviewing instructions, searching existing data sources, gathering and maintaining the data needed, and completing and reviewing this collection of information. Send comments regarding this burden estimate or any other aspect of this collection of information, including suggestions for reducing this burden to Department of Defense, Washington Headquarters Services, Directorate for Information Operations and Reports (0704-0188), 1215 Jefferson Davis Highway, Suite 1204, Arlington, VA 22202-4302. Respondents should be aware that notwithstanding any other provision of law, no person shall be subject to any penalty for failing to comply with a collection of information if it does not display a currently valid OMB control number. **PLEASE DO NOT RETURN YOUR FORM TO THE ABOVE ADDRESS.**

<b>1. REPORT DATE</b> 01-10-2006			<b>2. REPORT TYPE</b> Annual Summary			<b>3. DATES COVERED</b> 1 Oct 2004 – 30 Sep 2006		
<b>4. TITLE AND SUBTITLE</b>  Function of Periecan Domain I in Prostate Cancer						<b>5a. CONTRACT NUMBER</b>		
						<b>5b. GRANT NUMBER</b> W81XWH-04-1-0919		
						<b>5c. PROGRAM ELEMENT NUMBER</b>		
<b>6. AUTHOR(S)</b>  Dr. Chu Zhang Dr. Mary C. Farach-Carson						<b>5d. PROJECT NUMBER</b>		
						<b>5e. TASK NUMBER</b>		
						<b>5f. WORK UNIT NUMBER</b>		
<b>7. PERFORMING ORGANIZATION NAME(S) AND ADDRESS(ES)</b>  University of Delaware Newark, DE 19716						<b>8. PERFORMING ORGANIZATION REPORT NUMBER</b>		
<b>9. SPONSORING / MONITORING AGENCY NAME(S) AND ADDRESS(ES)</b> U.S. Army Medical Research and Materiel Command Fort Detrick, Maryland 21702-5012						<b>10. SPONSOR/MONITOR'S ACRONYM(S)</b>		
						<b>11. SPONSOR/MONITOR'S REPORT NUMBER(S)</b>		
<b>12. DISTRIBUTION / AVAILABILITY STATEMENT</b> Approved for Public Release; Distribution Unlimited								
<b>13. SUPPLEMENTARY NOTES</b> Original contains colored plates: ALL DTIC reproductions will be in black and white.								
<b>14. ABSTRACT</b>  SEE ATTACHED PAGE								
<b>15. SUBJECT TERMS</b> Pelecan, HBGFs, Prostate Cancer, apoptosis								
<b>16. SECURITY CLASSIFICATION OF:</b>					<b>18. NUMBER OF PAGES</b>	<b>19a. NAME OF RESPONSIBLE PERSON</b> USAMRMC		
<b>a. REPORT</b> U	<b>b. ABSTRACT</b> U	<b>c. THIS PAGE</b> U					<b>19b. TELEPHONE NUMBER</b> <i>(include area code)</i>	
				UU	23			

## ABSTRACT

Preferential metastasis of prostate cancer (PCa) to bone marrow contributes to disease mortality and morbidity. Local factors present in the bone stromal extracellular matrix (ECM) increase metastatic tumor growth through paracrine interactions among tumor, stromal and endothelial cells present in the microenvironment. Heparin binding growth factors (HBGF) present in bone marrow provide growth and survival signals to metastatic PCa cells. Perlecan (PIn), the major heparan sulfate proteoglycan (HSPG) in the bone marrow stromal ECM functions as a co-receptor to deliver HBGFs to high affinity receptors. HS chains on PIn are located in a unique N-terminal domain I (PInDI) which serves as a co-receptor for HBGFs. We hypothesized that PIn, specifically PInDI, delivers HBGFs to the PCa cell surface, promotes cell survival and protects from apoptosis. We used three PCa cell lines: LNCaP, C4-2B, and PC3 to study the function of PInDI. We harvested conditioned medium (CM) from bone stromal cell lines, HS27a and HS5, which produce abundant PIn. The proteoglycan rich fraction containing PIn was obtained using anion exchange bead chromatography, then tested as a survival factor for the three different PCa cell lines. DNA fragmentation experiments showed that bone stromal derived PIn from CM protected all three lines of PCa cells from camptothecin induced apoptosis. We also supplied purified, fully glycosylated recombinant PInDI protein to PCa cells, which also protected cells from apoptosis. PIn knockdown clones grow poorly compared to the parental or control transfected C4-2B cells (Ref. 1). Interestingly, knockdown cells were more susceptible to apoptosis in response to the apoptosis inducers anti-Fas and camptothecin, and exogenous PInDI rescued survival. We followed this up by undertaking to identify natural factor(s) produced by bone marrow stromal cells that induces apoptosis in PCa cells. We found that this apoptosis inducing activity is specific for LNCaP derived lines. Ongoing experiments seek to identify this factor. Collectively, our studies demonstrate that PIn present in the bone marrow compartment protects PCa cells from apoptosis and that this activity maps to HS bearing PInDI. This function contributes to the growth and survival of PCa cells in a potentially hostile bone marrow microenvironment.

## Table of Contents

Cover.....	1
SF 298.....	2
Introduction.....	4
Body.....	5
Key Research Accomplishments.....	18
Reportable Outcomes.....	18
Conclusions.....	18
References.....	20

## **Introduction**

Metastasis of prostate cancer cells to bone marrow stroma occurs with high fidelity. The paracrine interactions between prostate cancer cells and surrounding bone stromal cells are key to disease progression [3]. A number of heparin binding (HB) growth factors including bFGF (FGF-2), VEGF and hepatocyte growth factor/scatter factor (HGF/SF) stimulate growth of prostate cancer cells [4-7]. In addition to affecting proliferation, HB growth factors promote cell motility, stimulate angiogenesis and inhibit apoptosis, all of which contribute to cancer progression [8-10]. HB growth factor receptors depend on heparan sulfate proteoglycans (HSPGs) as co-receptors for signaling [11]. Pln is an abundant HSPG found in developing and adult animals in various species [13]. It also is a major HSPG in the bone stromal ECM [14,] and blood vessels including that of the prostate that can support high-affinity receptor binding. Pln protein core is composed of 5 major domains with a unique domain I and 4 other domains with sequence similarities to other ECM and cell surface proteins [17]. Three potential glycosaminoglycan (GAG) attachment sites occur near the amino terminus. In most cases, the GAGs are of the heparan sulfate (HS) variety, although chondroitin sulfate (CS) may sometimes substitute for HS at one or more sites [20]. The large, complex nature of Pln suggests that this HSPG interacts with multiple cell surface and ECM proteins, only some of which have been described [22]. Several growth factors as well as other soluble proteins of the cell surface and ECM bind to the HS chains of Pln in domain I [23], and perhaps even to the Pln core protein [24]. Therefore, by binding various growth factors and interacting with cell surface HB growth factor receptors, Pln may mediate a number of biological actions previously associated with these growth factors and heparin (Hp)/HS polysaccharides.

Functions of individual Pln domains have been studied. Pln domain I (PlnDI) is a unique module at the N terminus and contains three closely spaced Ser-Gly-Asp sequences that serve in GAG attachment [26]. PlnDI with HS chains binds a number of matrix molecules, cytokines, and growth factors [28]. Our previous studies indicate that the GAG-bearing PlnDI provides a sufficient signal to trigger C3H10T1/2 cells to enter a chondrogenic differentiation pathway and the GAGs are important for this process because PlnDI-based polypeptides lacking GAG chains either by enzymatic removal or mutation of HS/CS attachment sites were inactive [29]. This growth factor delivery “co-receptor” function of PlnDI was explored with regard to prostate cancer bone metastasis and growth.

During our PlnDI study, we found that exposing LNCaP and C4-2B cells to conditioned medium (CM) harvested from bone stromal cell lines HS27a/HS5 initially induced apoptosis in PCa cells. This indicated that there are likely to be hostile factors in the bone microenvironment that inhibit PCa cell growth, and that overcoming the actions of these factors is a key element in metastatic PCa progression.

The first phase of this training period focused on the role of PlnDI in cell proliferation, cell survival and apoptosis by using different prostate cell lines and Pln knockdown clones and various biological assays. The second training phase extended the study to

characterize natural paracrine factor(s) produced by bone marrow stromal cells that induced apoptosis in PCa cells.

### **Main Body**

#### **Specific Aim1: To test the co-receptor function of PlnDI in prostate cancer cell proliferation.**

Preliminary experiments tested the HB growth factor dependent responses of Pln knockdown clones and compared them with their parental cell line C4-2B or control transfectants [1]. We used a structure-function based approach to determine if PlnDI, specifically the GAG chains and/or the core protein in domain I, are sufficient to provide this co-receptor function. Surprisingly, although Pln knockdown clones have lower proliferation rate, adding purified PlnDI in the medium didn't rescue the phenotype. Since the intact PlnDI didn't rescue the reduced proliferation, we didn't precede the GAG chain study (Fig. 1). Our hypothesis is that PlnDI only is not sufficient for the co-receptor function involved in proliferation.

#### **Specific Aim2: To test if PlnDI is involved in activating the cell survival pathway.**

We measured activation of the cell survival pathway Akt and MAPK by Western blot and compared responses of the Pln knockdown clones and the parental C4-2B cell line. Although the proliferation rate of the knockdown clones was different, there were no detectable changes in Akt or MAPK pathways of these knockdown clones (Fig. 2), thus we discontinued the study the role of PlnDI involved in these pathways. The key factors in these pathways are highly expressed in these PCa cells. That could explain why we could not detect moderate changes due to Pln knockdown. Another hypothesis is that Pln regulated proliferation goes through other pathways besides Akt/MAPK.

#### **Specific Aim3: To test if PlnDI protects prostate cancer cells from apoptosis.**

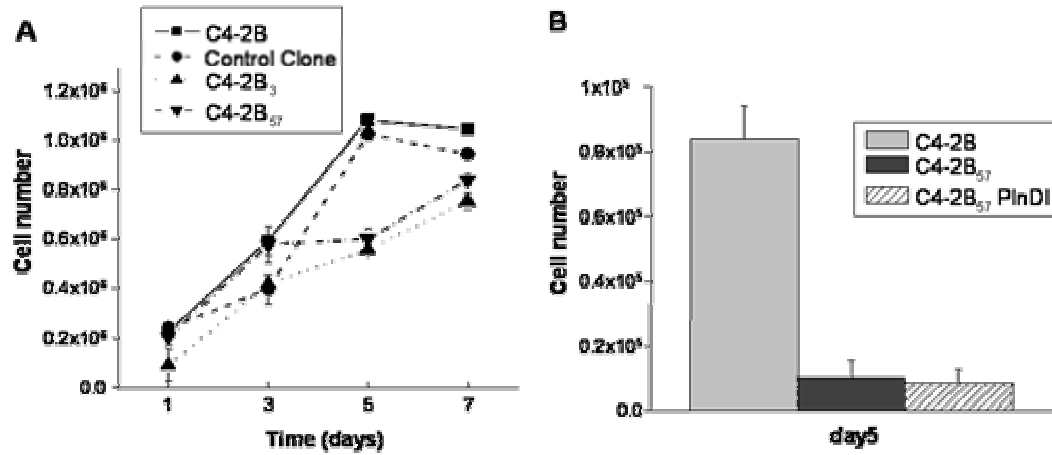
To study the role of PlnDI involved in apoptosis, we expanded the study to three PCa cell lines: LNCaP, PC3 and C4-2B. We used two bone stromal cell lines HS27a and HS5 to harvest conditioned medium. The proteoglycan rich fraction containing Pln was obtained using anion exchange bead chromatography. Including the Pln enriched medium with all three PCa cell lines protected from apoptosis compared to serum free medium after treatment with apoptosis inducer, camphothecin (Fig. 3). This experiment indicated that the Pln in the bone environment might protect prostate cancer cells from apoptosis. We also applied purified PlnDI protein to these cells and successfully rescued the cells from apoptosis (Fig. 4). Next, we measured the ability of PlnDI added exogenously to Pln knockdown clones to protect them from apoptosis induced by anti-Fas or camphothecin. We showed that PlnDI can rescue the increased apoptosis caused by Pln knockdown (Fig. 5). These data suggest that Pln can protect prostate cancer cell from apoptosis and PlnDI is sufficient for this function. We plan to expand our study by using Pln antibody depletion to ensure the role of Pln in cell apoptosis.

#### **Specific Aim4: To identify natural factor(s) produced by bone marrow stromal cells that induce apoptosis in PCa cells.**

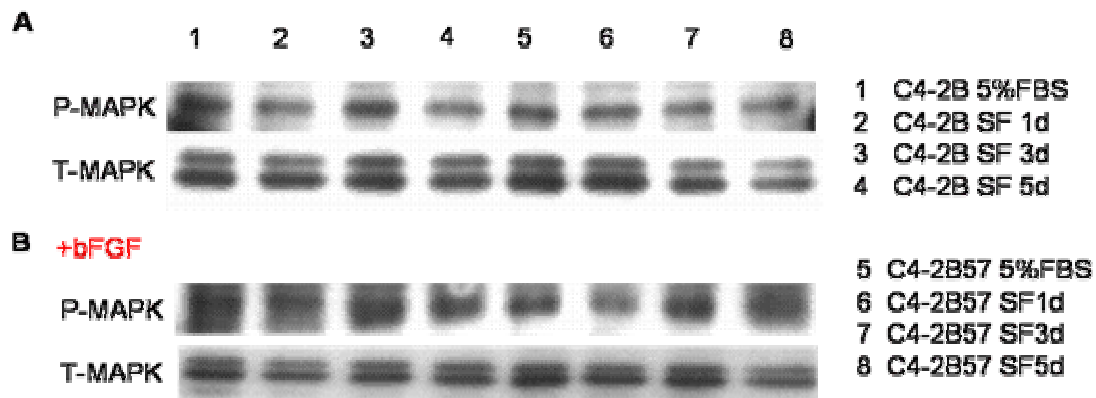
We first co-cultured LNCaP and C4-2B cells with bone stromal cell line HS27a/HS5. This configuration allows cells in different compartment to exchange soluble factors without cell-cell contact. Surprisingly, LNCaP and C4-2B cells did not show increased cell growth in the co-culture condition. On the contrary, the number of cells decreased after 3 days co-cultured with mixture of HS27 and HS5 cells (Fig. 6). The similar effect were seen when culture these cells in conditioned medium (CM) harvested from HS27a/HS5 cells. The cell proliferation dropped dramatically after 3 days (Fig. 7). These results suggest that the bone stromal cell conditioned environment has an inhibitory effect on PCa cell growth. The CM harvested from bone stromal cells not only inhibited PCa cell growth, but also induced apoptosis (Fig. 8A). Neither of the other two PCa cell lines PC3 nor DU145 showed any apoptosis after treatment of CM. None of the other cell lines tested showed any apoptosis (Fig. 8B). Breast cancer cell line, T47D, did not show apoptosis after treatment of CM suggesting that the apoptotic effect of CM is preferential to PCa cell lines. Bone osteoblast cell line, MG63, and prostate epithelial cell line, PrEC, did not show apoptosis in response to CM suggesting that the CM is not targeting normal bone and prostate cells. These data suggest that LNCaP and its sublines are regulated through unique cell survival and apoptotic pathways that are not present in all cells derived either from bone or prostate. The CM from prostate foreskin cell lines or prostate stromal cells failed to induce apoptosis in the LNCaP and C4-2B cells (Fig. 9). This indicates that the prostate microenvironment is not hostile for prostate cancer cells. This CM induction of apoptosis was dose dependent (Fig. 10). We showed that the LNCaP cells and C4-2B cells showed 10% more cell death compared to those grown in SF medium (Fig. 11). When grown in CM harvested from bone stromal cells, the surviving LNCaP and C4-2B cells altered their cell morphology (Fig. 12). The cells lost the typical epithelial cell phenotype and normal cell-cell contact. Cells were elongated to spindle shape and formed long processes. This phenotypic change indicates that these cells are undergoing a phenotypic transformational.

In figure 13, we propose a new model of paracrine interaction between prostate cancer cells and bone stromal cells. Unlike previously models, we propose that after the cross talk of bone stromal cells and prostate cancer cells, the paracrine factors from bone stromal cells induce apoptosis of some PCa cells. Surviving cells undergo a series of gene expression and morphology changes, further adapting to growth in the bone microenvironment. Based on the data that PlnDI can protect prostate cells from apoptosis, we believe that Pln acts as a local survival factor to help PCa cells as they further adapt to factors present in the bone environment.

## Figures



**Figure 1. Addition of exogenous Pln does not rescue growth responses to FGF-2 in Pln knockdown C4-2B cells.** Panel (A). Conditioned medium from parental C4-2B cells failed to rescue the proliferation of Pln knockdown clones C4-2B<sub>3</sub> and C4-2B<sub>57</sub> cultured in FGF-2. Panel (B). Purified Pln domain I protein (5 ug/ml) failed to rescue the growth response to FGF-2, whereas parental cells continued to proliferate through the fifth day in culture. Figure is adapted from [1].



**Figure 2. Western blots showed that Phosphorylated MAPK level was not altered in the Pln knockdown clone 57.** P-MAPK: phosphorylated MAPK. T-MAPK: Total MAPK.

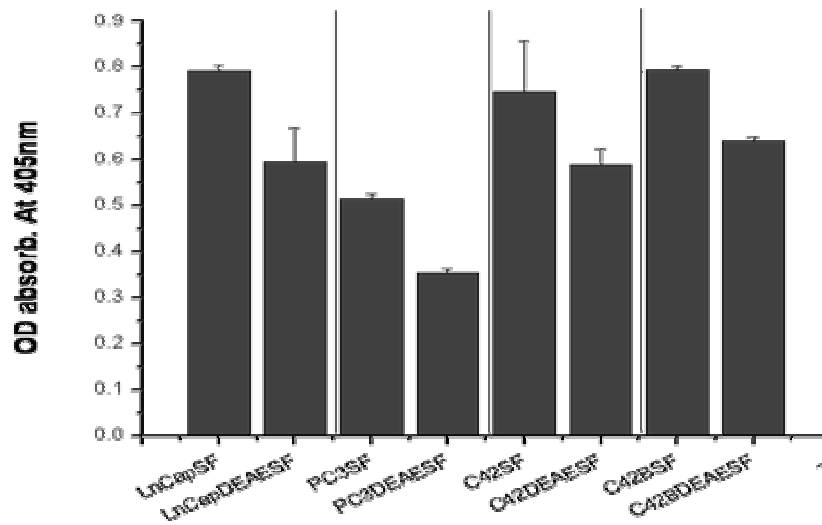


Figure 3. Pln enriched medium reduced apoptosis in all cell lines treated with camptothecin.

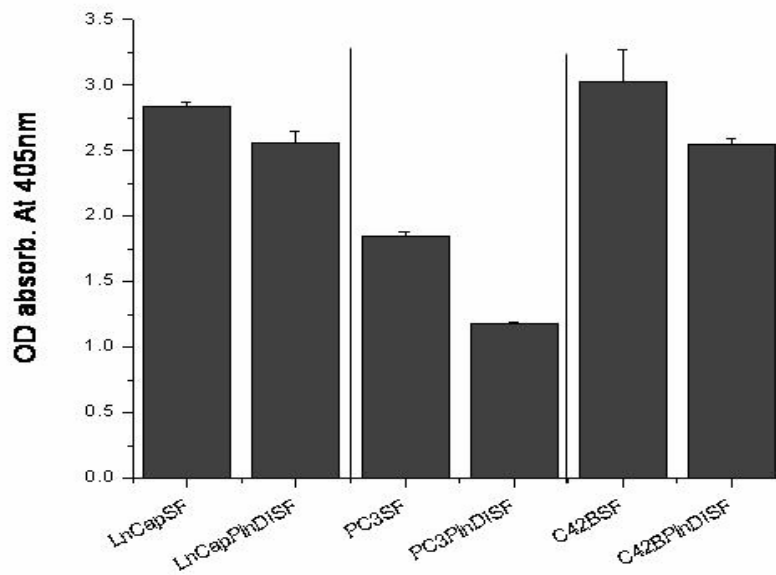
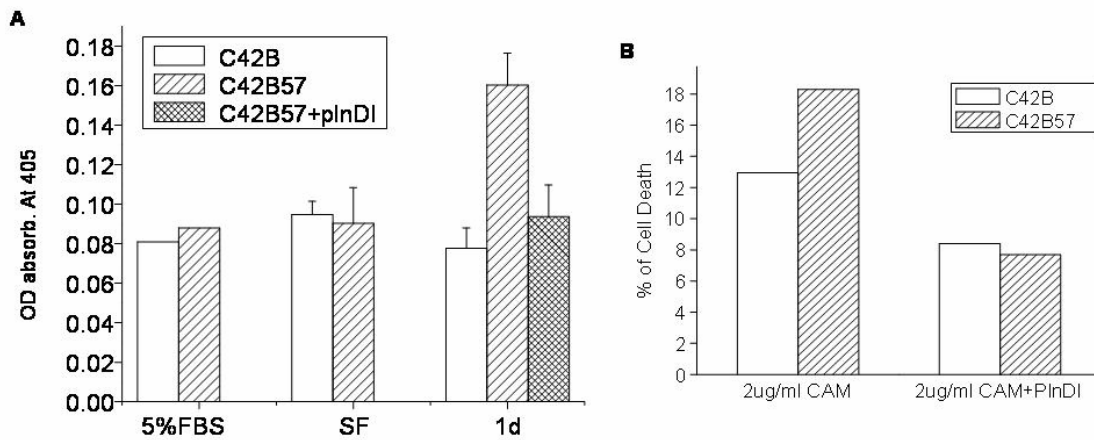
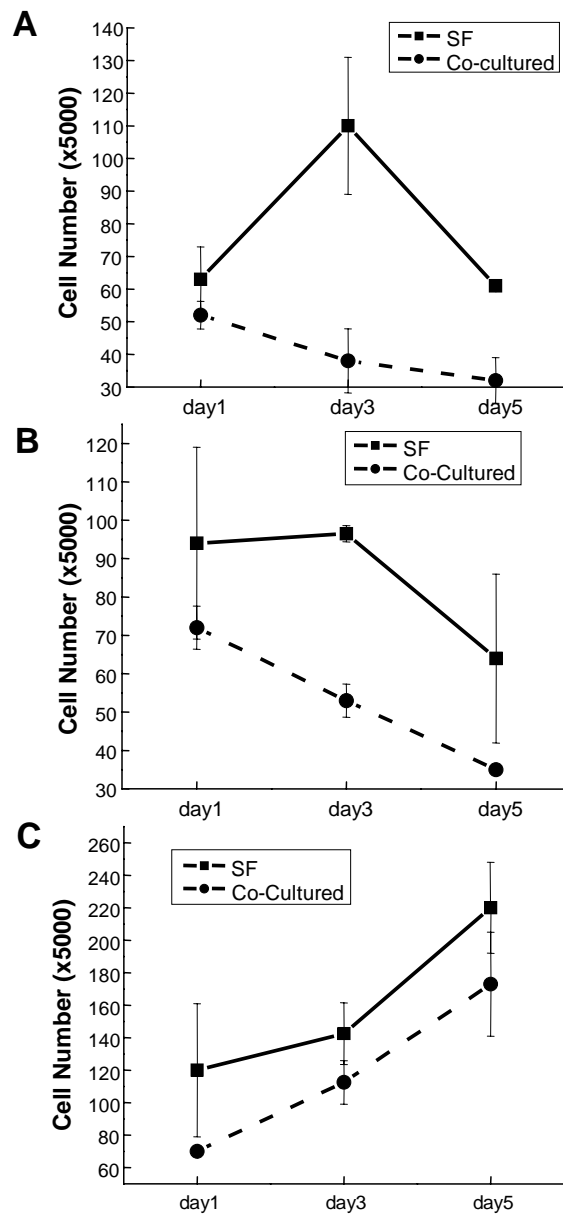


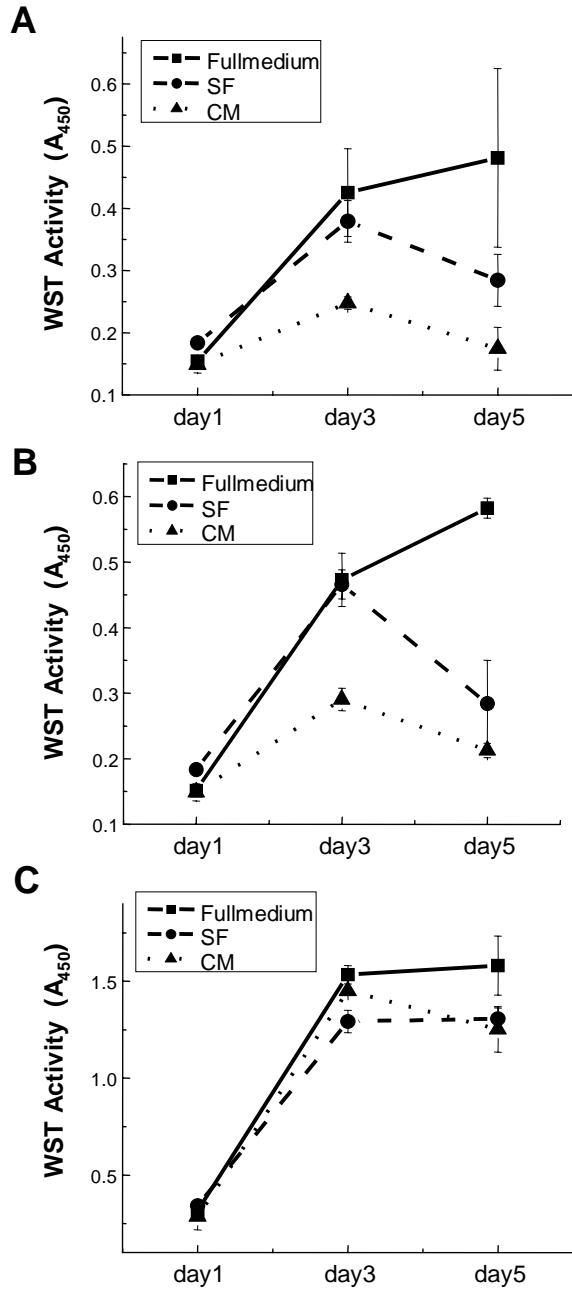
Figure 4. PlnDI reduce apoptosis in all cell lines treated with camptothecin.



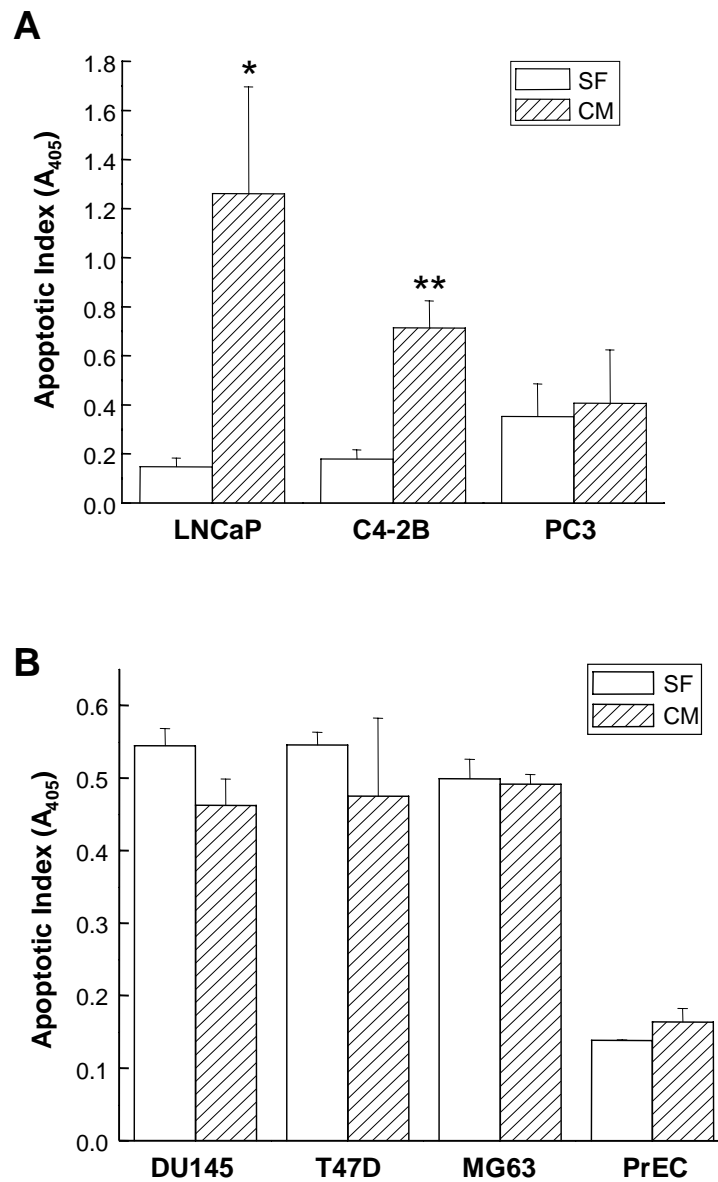
**Figure 5. Pln knockdown clone underwent more apoptosis compared to parental cells, and PlnDI can rescue apoptosis induced by Anti-Fas or camptothecin.** Panel (A). DNA fragmentation assay showed that Pln knockdown clone underwent more cell death in response to Anti-Fas treatment. Panel (B). Pln knockdown clone had more cell death in response to camptothecin.



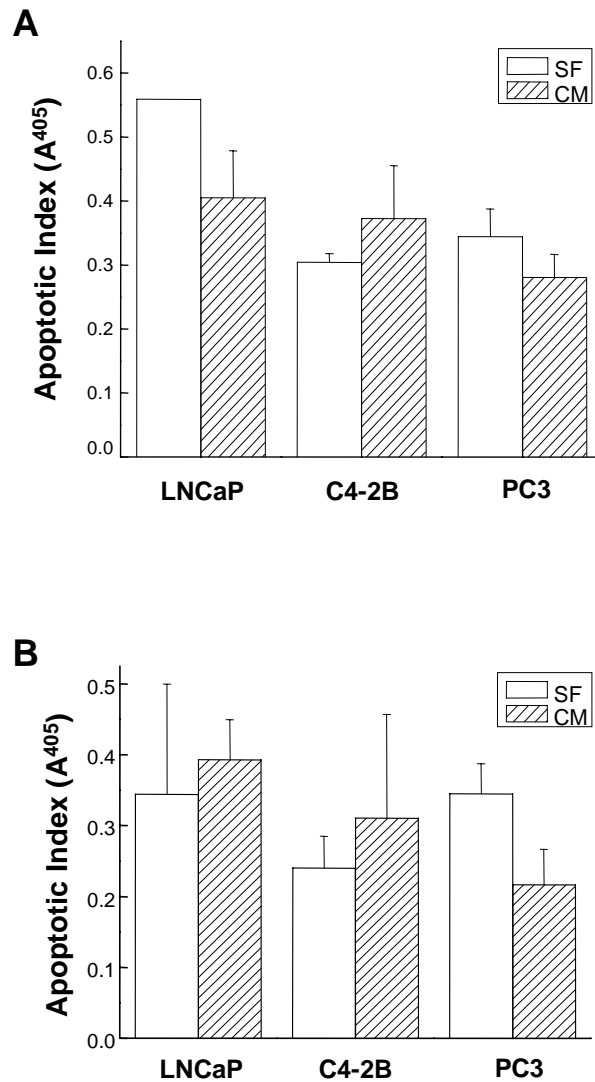
**Figure 6. PCa cell lines LNCaP (A) and C4-2B (B) had less growth when co-cultured with bone stromal cell lines compared to SF medium. PC3 (C) had the same growth rate compare to SF medium. Cells were counted after co-culture with bone stromal cell lines HS27a/HS5 for 1, 3 or 5 days.**



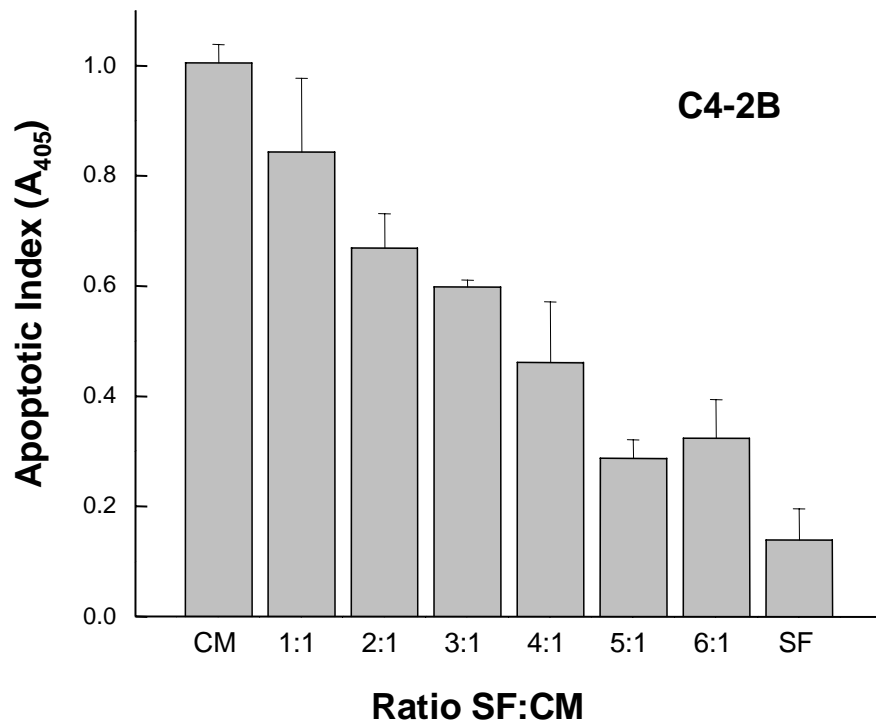
**Figure 7. Conditioned medium (CM) reduced LNCaP (A) and C4-2B (B) cell proliferation but not PC3 (C) cell proliferation.** Cells were seeded in 96 well plates. Cells were treated with full medium (10% (v/v) FBS), serum free medium or conditioned medium. Medium were changed every other day. WST solution were added in the medium for 15 minutes at days 1, 3 and 5, and then absorbance read at OD 450nm.



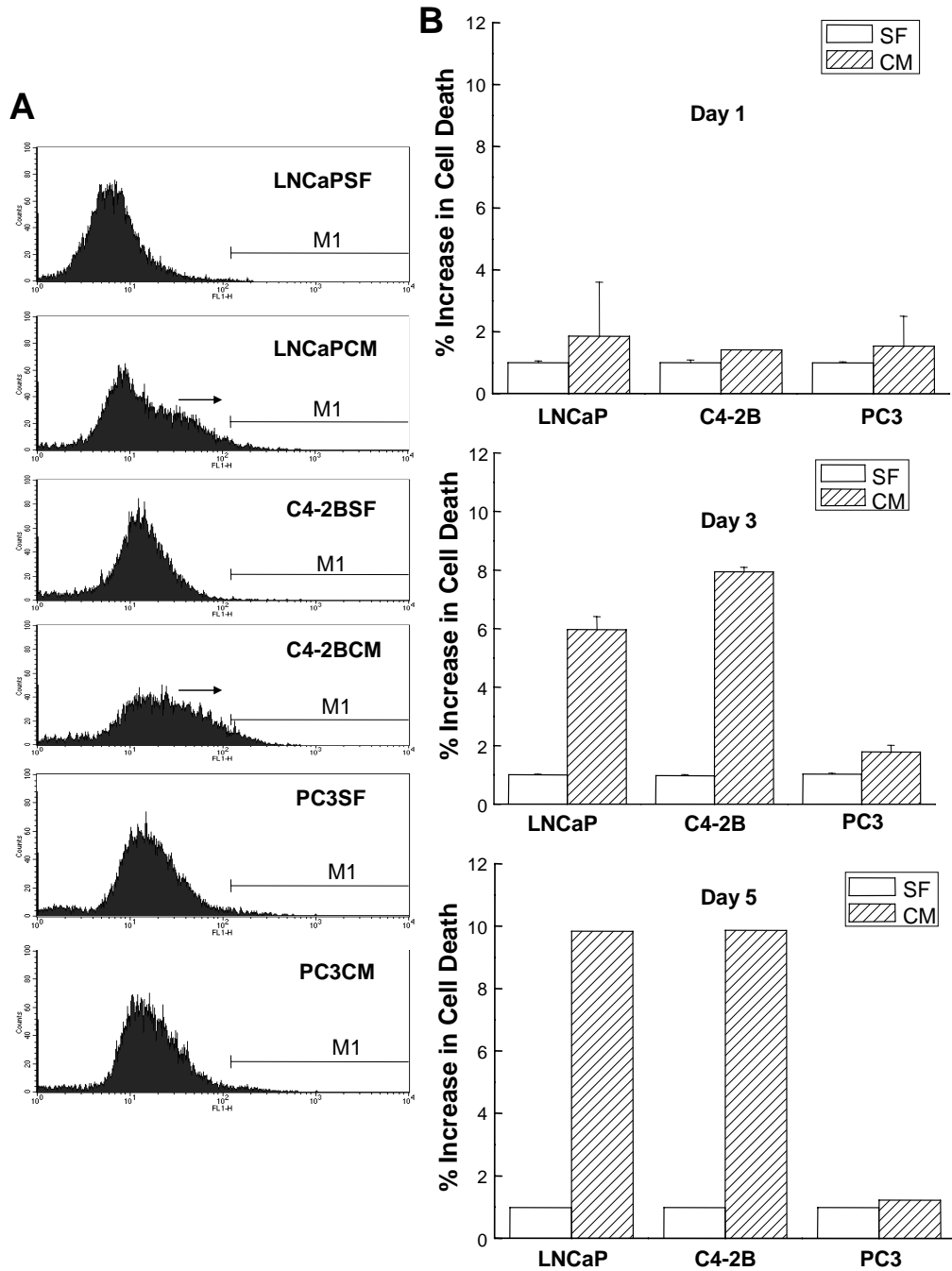
**Figure 8. Conditioned medium (CM) harvested from bone stromal cell lines initiated apoptosis in LNCaP cells and C4-2B cells, but not PC3 cells (A) or selected other cell lines (B).** Cells were seeded in 24 well plates and then treated with serum free (SF) medium or CM for 2 days. Apoptosis was measured using DNA fragmentation ELISA. For different experiments, the basal level of OD 405nm varied due to the limitation of the method, so only apoptosis caused by CM were compared to corresponding SF treated cells. (\* $p < 0.05$ , \*\*  $p < 0.005$ )



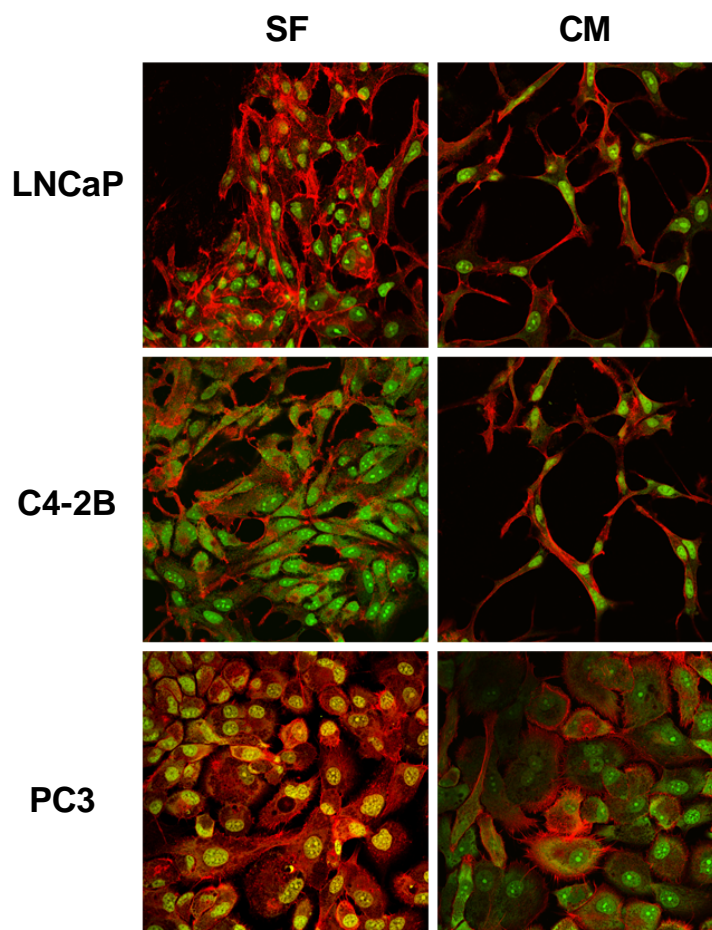
**Figure 9. Conditioned medium harvested from other stromal cell lines failed to induce apoptosis in LNCaP and C4-2B cell lines. A. Cells were treated with foreskin cell line CM. B. Cells were treated with prostate stromal cell line CM. Fore skin cells and prostate stromal cells were seeded in T-75 until confluent. CM were harvested and filtered through 0.2nm filter. Prostate cancer cell lines were treated with CM for 2 days.**



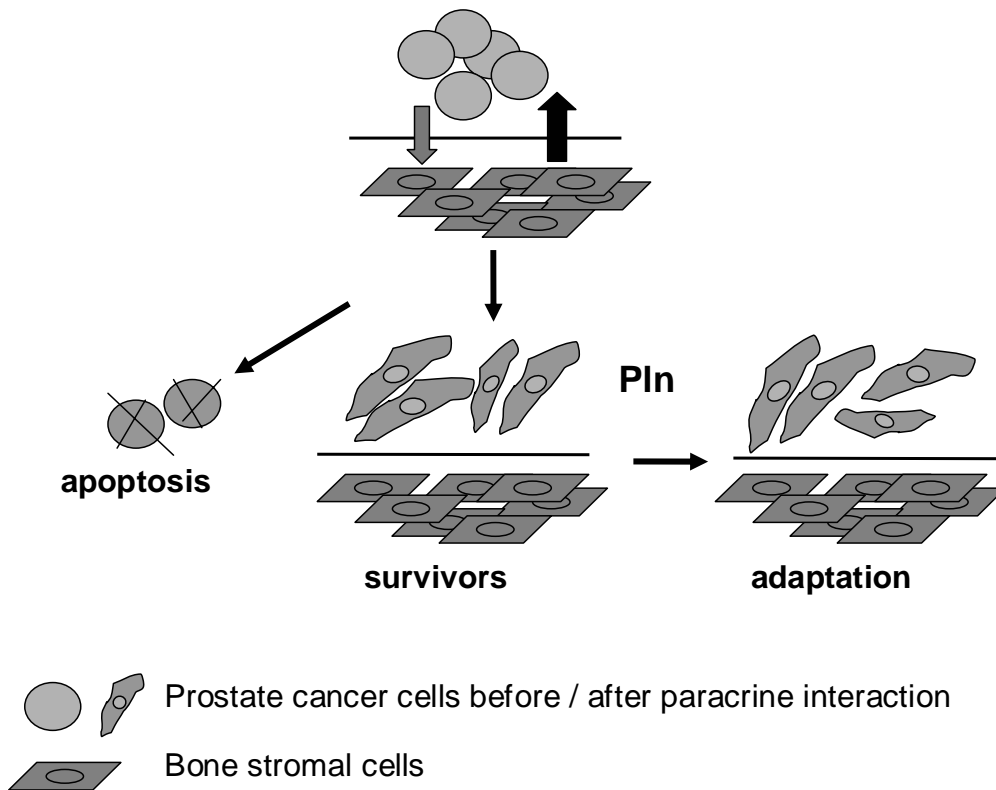
**Figure 10. Apoptosis induced by conditioned medium (CM) was dose dependent.** C4-2B cells were shown in the figure. Cells were treated with different ratio of SF:CM medium. DNA fragmentation ELISA assay was used to measure apoptosis.



**Figure 11. FACS assay showed increased apoptosis of LNCaP and C4-2B cells, but not of PC3 cells. A.** FACS scatter grams showed increases of FAM-caspase 3&7 positive cells as “right” shifts [arrows]. Cells were grown in T-25 until confluent and then treated with CM or SF for 5 day time points (Only day 5 time points were shown here). The number of cells that shifted into the M1 region was counted and plotted as shown in B. **B.** LNCaP and C4-2B cells showed increased cell death rates over 5 days in CM. The percentage of SF induced cell death was standardized to 1.0 and CM increases in cell death were plotted.



**Figure 12. LNCaP and C4-2B cells, but not PC3, underwent morphological changes when grown in conditioned medium (CM) harvested from bone stromal cell lines.** Cells were seeded in 8 well microscopic growth chambers and then treated with CM or SF medium for 5 days. Standard histoimmunochemistry assays were performed using Alexa Fluor Phalloidin for actin and SYTO13 for nuclei. Red: actin, Green: nuclear



**Figure 13. Model for paracrine interactions between bone stromal cells and prostate cancer cells in the bone microenvironment.** PCa cells enter the bone environment and initiate paracrine cross talk with neighboring bone stromal cells. During the cross talk, some PCa cells are triggered to undergo apoptosis. Survivors undergo a series of genotypic and phenotypic changes and adapt to grow in the presence of bone stromal cells. This suggests an apoptosis and an adaptation stage exist during prostate cancer cell metastasis to bone. PIn plays an important role in the cell survival.

### **Key Research Accomplishment:**

We have achieved many research accomplishments emanating from the training grant:

- **Manuscripts:**  
Zhang C., Chung L.W.K., Dodge G., Carson D.D. and Farach-Carson, M.C. (2006) *Function of PlnDI in Prostate Cancer Apoptosis and Survival*. Manuscript In preparation.  
Zhang C. Carson D.D. and Farach-Carson, M.C. (2006) *Paracrine Factors in the Bone Stromal Environment Induce Apoptosis in LNCaP and C4-2B Prostate Cancer Cells*. In preparation.
- **Abstracts:**  
*Function of Perlecan in Prostate Cancer Cell Growth and Survival*. The 8<sup>th</sup> International Conference on the Chemistry & Biology of Mineralized Tissues, October 17-22, 2004  
*Function of Perlecan Domain I in Prostate Cancer Cell Survival*. AACR Special Conference on Cancer, Proteases, and the Tumor Microenvironment. November 30-December 4, 2005  
*Function of Paracrine Signaling in Prostate Cancer Cell Survival and Apoptosis in Bone Marrow Environment*. The 97<sup>th</sup> AACR Annual Meeting, April 1-5, 2005

### **Reportable Outcomes**

- Presentations  
*Function of PlnDI in prostate cancer*. Delaware Biotechnology Institute, April 2005  
*Function of Paracrine Signaling in Prostate Cancer Cell Survival and Apoptosis in Bone Marrow Environment*. Prostate Cancer Super-group Meeting, University of Delaware, May 2006
- Poster presentations at international and national conference (see abstracts)
- Two manuscripts in preparation for publication (see manuscripts)

### **Conclusions**

During the two years supported by this Training Grant, we successfully finished and extended our proposed aims and are now writing these up for publication that will acknowledge the training grant. From Pln knockdown studies, we showed that Pln regulates PCa cell proliferation and PlnDI only is not sufficient for this function. We showed that Akt/MAPK pathways are not regulated directly by Pln during cell proliferation. We studied apoptosis of several PCa cell lines in response to apoptosis inducer camptothecin. We successfully rescued apoptosis of all PCa cell lines by Pln enriched CM from bone stromal cells. We also showed that PlnDI has the same rescue effect as Pln enriched CM, suggesting this maps to the HS bearing domain and growth factor delivery functions. We studied apoptosis of the Pln ribozyme knockdown clones induced by anti-Fas or camptothecin and compared to parentals, the knockdown clones showed more apoptosis. We showed that purified PlnDI protein can rescue the apoptosis

behavior of the knockdown clones to more closely resemble the parental cells that express normal levels of Pln. These experiments allowed us to assess the importance of PlnDI in PCa survival *in vitro*. Our follow up study is to further test if the GAGs or core protein are essential for the function of PlnDI by attempting rescue with HS or CS, alone or attached to BSA rather than Pln D1. We also will perform selective enzyme digestions with chondroitinase or heparanase to measure the relative contributions of the GAGs and the core protein. These systematic studies will dissect the role of PlnDI in controlling PCa apoptosis. In the closely related extended studies, we showed that there are natural factor(s) produced by bone marrow stromal cells that induce apoptosis in PCa cells. We hope to identify these factors in future work. Finally, we suggest that PlnDI protects PCa cells from apoptosis in the bone microenvironment, acting as a local survival factor as they further adapt to factors present in the bone environment. Targeting this feature may provide new mechanisms to selectively target these cells in metastatic disease.

## References:

1. Savore, C., et al., *Ribozyme-mediated perlecan knockdown in prostate cancer cells reduces heparin-binding growth factor responses in vitro and tumor growth in vivo*. being submitted.
2. Iozzo, R.V., *Matrix proteoglycans: from molecular design to cellular function*. Annu Rev Biochem, 1998. **67**: p. 609-52.
3. Chung, L.W. and R. Davies, *Prostate epithelial differentiation is dictated by its surrounding stroma*. Mol Biol Rep, 1996. **23**(1): p. 13-9.
4. Mansson, P.E., et al., *Heparin-binding growth factor gene expression and receptor characteristics in normal rat prostate and two transplantable rat prostate tumors*. Cancer Res, 1989. **49**(9): p. 2485-94.
5. Krupski, T., et al., *The role of vascular endothelial growth factor in the tissue specific in vivo growth of prostate cancer cells*. Growth Factors, 2001. **18**(4): p. 287-302.
6. Gmyrek, G.A., et al., *Normal and malignant prostate epithelial cells differ in their response to hepatocyte growth factor/scatter factor*. Am J Pathol, 2001. **159**(2): p. 579-90.
7. Shain, S.A., et al., *Endogenous fibroblast growth factor-1 or fibroblast growth factor-2 modulate prostate cancer cell proliferation*. Cell Growth Differ, 1996. **7**(5): p. 573-86.
8. Fosslien, E., *Review: molecular pathology of cyclooxygenase-2 in cancer-induced angiogenesis*. Ann Clin Lab Sci, 2001. **31**(4): p. 325-48.
9. Rubin, J.S., et al., *Dissociation of heparan sulfate and receptor binding domains of hepatocyte growth factor reveals that heparan sulfate-c-met interaction facilitates signaling*. J Biol Chem, 2001. **276**(35): p. 32977-83.
10. Michalsky, M.P., et al., *Heparin-binding EGF-like growth factor decreases apoptosis in intestinal epithelial cells in vitro*. J Pediatr Surg, 2001. **36**(8): p. 1130-5.
11. Sanderson, R.D., *Heparan sulfate proteoglycans in invasion and metastasis*. Semin Cell Dev Biol, 2001. **12**(2): p. 89-98.
12. Zhou, F.Y., et al., *Heparin-dependent fibroblast growth factor activities: effects of defined heparin oligosaccharides*. Eur J Cell Biol, 1997. **73**(1): p. 71-80.
13. Iozzo, R.V., *Perlecan: a gem of a proteoglycan*. Matrix Biol, 1994. **14**(3): p. 203-8.
14. Schofield, K.P., J.T. Gallagher, and G. David, *Expression of proteoglycan core proteins in human bone marrow stroma*. Biochem J, 1999. **343 Pt 3**: p. 663-8.
15. Chakravarti, S., S.L. Phillips, and J.R. Hassell, *Assignment of the perlecan (heparan sulfate proteoglycan) gene to mouse chromosome 4*. Mamm Genome, 1991. **1**(4): p. 270-2.
16. Nicole, S., et al., *Perlecan, the major proteoglycan of basement membranes, is altered in patients with Schwartz-Jampel syndrome (chondrodystrophic myotonia)*. Nat Genet, 2000. **26**(4): p. 480-3.
17. Murdoch, A.D., et al., *Primary structure of the human heparan sulfate proteoglycan from basement membrane (HSPG2/perlecan). A chimeric molecule with multiple domains homologous to the low density lipoprotein receptor*,

- laminin, neural cell adhesion molecules, and epidermal growth factor.* J Biol Chem, 1992. **267**(12): p. 8544-57.
18. Hopf, M., et al., *Recombinant domain IV of perlecan binds to nidogens, laminin-nidogen complex, fibronectin, fibulin-2 and heparin.* Eur J Biochem, 1999. **259**(3): p. 917-25.
  19. Gohring, W., et al., *Mapping of the binding of platelet-derived growth factor to distinct domains of the basement membrane proteins BM-40 and perlecan and distinction from the BM-40 collagen-binding epitope.* Eur J Biochem, 1998. **255**(1): p. 60-6.
  20. Doege, K., et al., *Non-glycosaminoglycan bearing domains of perlecan and aggrecan influence the utilization of sites for heparan and chondroitin sulfate synthesis.* Matrix Biol, 1997. **16**(4): p. 211-21.
  21. Iozzo, R.V., et al., *Structural and functional characterization of the human perlecan gene promoter. Transcriptional activation by transforming growth factor-beta via a nuclear factor 1-binding element.* J Biol Chem, 1997. **272**(8): p. 5219-28.
  22. Klein, G., et al., *Perlecan in human bone marrow: a growth-factor-presenting, but anti-adhesive, extracellular matrix component for hematopoietic cells.* Matrix Biol, 1995. **14**(6): p. 457-65.
  23. Tapanadechopone, P., et al., *Epidermal transformation leads to increased perlecan synthesis with heparin-binding-growth-factor affinity.* Biochem J, 2001. **355**(Pt 2): p. 517-27.
  24. Mongiat, M., et al., *The protein core of the proteoglycan perlecan binds specifically to fibroblast growth factor-7.* J Biol Chem, 2000. **275**(10): p. 7095-100.
  25. Chakravarti, S., et al., *Recombinant domain III of perlecan promotes cell attachment through its RGDS sequence.* J Biol Chem, 1995. **270**(1): p. 404-9.
  26. Dolan, M., et al., *Identification of sites in domain I of perlecan that regulate heparan sulfate synthesis.* J Biol Chem, 1997. **272**(7): p. 4316-22.
  27. Costell, M., et al., *Characterization of recombinant perlecan domain I and its substitution by glycosaminoglycans and oligosaccharides.* Eur J Biochem, 1997. **243**(1-2): p. 115-21.
  28. Jiang, X. and J.R. Couchman, *Perlecan and tumor angiogenesis.* J Histochem Cytochem, 2003. **51**(11): p. 1393-410.
  29. French, M.M., et al., *Chondrogenic activity of the heparan sulfate proteoglycan perlecan maps to the N-terminal domain I.* J Bone Miner Res, 2002. **17**(1): p. 48-55.
  30. Turnbull, J., A. Powell, and S. Guimond, *Heparan sulfate: decoding a dynamic multifunctional cell regulator.* Trends Cell Biol, 2001. **11**(2): p. 75-82.
  31. Lyon, M. and J.T. Gallagher, *Bio-specific sequences and domains in heparan sulphate and the regulation of cell growth and adhesion.* Matrix Biol, 1998. **17**(7): p. 485-93.
  32. Lindahl, U., M. Kusche-Gullberg, and L. Kjellen, *Regulated diversity of heparan sulfate.* J Biol Chem, 1998. **273**(39): p. 24979-82.
  33. Vlodavsky, I., et al., *Mammalian heparanase as mediator of tumor metastasis and angiogenesis.* Isr Med Assoc J, 2000. **2 Suppl**: p. 37-45.

34. Dorai, T., et al., *A recombinant defective adenoviral agent expressing anti-bcl-2 ribozyme promotes apoptosis of bcl-2-expressing human prostate cancer cells*. Int J Cancer, 1999. **82**(6): p. 846-52.
35. Suzuki, T., et al., *Adenovirus-mediated ribozyme targeting of HER-2/neu inhibits in vivo growth of breast cancer cells*. Gene Ther, 2000. **7**(3): p. 241-8.
36. Funato, T., et al., *Anti-K-ras ribozyme induces growth inhibition and increased chemosensitivity in human colon cancer cells*. Cancer Gene Ther, 2000. **7**(3): p. 495-500.
37. Wright, L. and P. Kearney, *Current status of ribozymes as gene therapy agents for cancer*. Cancer Invest, 2001. **19**(5): p. 495-509.
38. Sharma, B., et al., *Antisense targeting of perlecan blocks tumor growth and angiogenesis in vivo*. J Clin Invest, 1998. **102**(8): p. 1599-608.
39. Liu, R., et al., *Ribozyme ablation demonstrates that the cardiac subtype of the voltage-sensitive calcium channel is the molecular transducer of 1, 25-dihydroxyvitamin D(3)-stimulated calcium influx in osteoblastic cells*. J Biol Chem, 2000. **275**(12): p. 8711-8.
40. Adatia, R., et al., *Suppression of invasive behavior of melanoma cells by stable expression of anti-sense perlecan cDNA*. Ann Oncol, 1997. **8**(12): p. 1257-61.
41. Ghosh, P.M., et al., *Akt in prostate cancer: possible role in androgen-independence*. Curr Drug Metab, 2003. **4**(6): p. 487-96.
42. Pfeil, K., et al., *Long-term androgen-ablation causes increased resistance to PI3K/Akt pathway inhibition in prostate cancer cells*. Prostate, 2004. **58**(3): p. 259-68.
43. Frei, H.a., *Cancer Medicine e.5*. 2000.
44. Liu, S., et al., *Heparin/heparan sulfate (HP/HS) interacting protein (HIP) supports cell attachment and selective, high affinity binding of HP/HS*. J Biol Chem, 1997. **272**(41): p. 25856-62.
45. Kiefer, J.A. and M.C. Farach-Carson, *Type I collagen-mediated proliferation of PC3 prostate carcinoma cell line: implications for enhanced growth in the bone microenvironment*. Matrix Biol, 2001. **20**(7): p. 429-37.