

Network on Target: Remotely Configured Adaptive Tactical Networks

C2 Experimentation

Alex Bordetsky
Eugene Bourakov
Center for Network Innovation and Experimentation (CENETIX)
Naval Postgraduate School
589 Dyer Road, Room 202, Monterey, CA 93943 USA
(831) 656-1804
abordets@nps.edu, ebourako@nps.edu

Abstract

The emerging tactical networks represent complex network-centric systems, in which multiple sensors, unmanned vehicles, and geographically distributed units of highly mobile decision makers, transfer and analyze data while on the move. The network could easily scale up to hundreds of cooperating nodes, providing tactical extension to the system-of-systems environment of Global Information Grid [1]. The node mobility as well as ad hoc network topology reconfiguration becomes a powerful control option, which network operators or intelligent management agents could apply to provide for self-forming, self-healing behavior [2]. This in turn requires new techniques for adaptive remote management of mobile wireless nodes; their rapid remote or autonomous reconfiguration at both physical and application layers, subject to changing operational requirements.

We name this new adaptive tactical networking management paradigm as Network-on-Target (NoT). It is assumed that the NoT process starts at the level of Situational Awareness Interface used by the local or higher echelon commander, to point onto the Target, which in this case is the site to be reached by the self-configuring network. In response the mobile networking node, i.e. small boat, light reconnaissance vehicle, or operator are moved to the area to extend the tactical mesh. However, if site is too far, or the preceding links are about to break down, the UAV is deployed to stretch the network further to the remote most node, or to heal the overstretched intermediate link. This in turn would require rapid and frequent re-alignment, of the antenna assets including panel switching and tune-up decisions made right at the level of local commander situational awareness view. More so, the commander's remote advisers, located thousands miles away of surveillance and targeting area would be able to see the effects of the healing assets deployment in the Situational Awareness view and assist the commander in re-aligning and stretching the mobile network to the target area.

In this paper we describe an innovative solution, developed at the Naval Postgraduate School Center for Network Innovation and Experimentation (CENETIX), enabling the Network-on-Target process by multiplatform control (separation of control and data links) and remote re-alignment of the self-forming OFDM-based tactical networking assets. The described self-aligning solution allows for mobile nodes critical capability of tracking each other on the move.

Report Documentation Page

Form Approved
OMB No. 0704-0188

Public reporting burden for the collection of information is estimated to average 1 hour per response, including the time for reviewing instructions, searching existing data sources, gathering and maintaining the data needed, and completing and reviewing the collection of information. Send comments regarding this burden estimate or any other aspect of this collection of information, including suggestions for reducing this burden, to Washington Headquarters Services, Directorate for Information Operations and Reports, 1215 Jefferson Davis Highway, Suite 1204, Arlington VA 22202-4302. Respondents should be aware that notwithstanding any other provision of law, no person shall be subject to a penalty for failing to comply with a collection of information if it does not display a currently valid OMB control number.

1. REPORT DATE JUN 2006		2. REPORT TYPE		3. DATES COVERED 00-00-2006 to 00-00-2006	
4. TITLE AND SUBTITLE Network on Target: Remotely Configured Adaptive Tactical Networks				5a. CONTRACT NUMBER	
				5b. GRANT NUMBER	
				5c. PROGRAM ELEMENT NUMBER	
6. AUTHOR(S)				5d. PROJECT NUMBER	
				5e. TASK NUMBER	
				5f. WORK UNIT NUMBER	
7. PERFORMING ORGANIZATION NAME(S) AND ADDRESS(ES) Naval Postgraduate School,589 Dyer Road,Monterey,CA,93943				8. PERFORMING ORGANIZATION REPORT NUMBER	
9. SPONSORING/MONITORING AGENCY NAME(S) AND ADDRESS(ES)				10. SPONSOR/MONITOR'S ACRONYM(S)	
				11. SPONSOR/MONITOR'S REPORT NUMBER(S)	
12. DISTRIBUTION/AVAILABILITY STATEMENT Approved for public release; distribution unlimited					
13. SUPPLEMENTARY NOTES The original document contains color images.					
14. ABSTRACT					
15. SUBJECT TERMS					
16. SECURITY CLASSIFICATION OF:			17. LIMITATION OF ABSTRACT	18. NUMBER OF PAGES 12	19a. NAME OF RESPONSIBLE PERSON
a. REPORT unclassified	b. ABSTRACT unclassified	c. THIS PAGE unclassified			

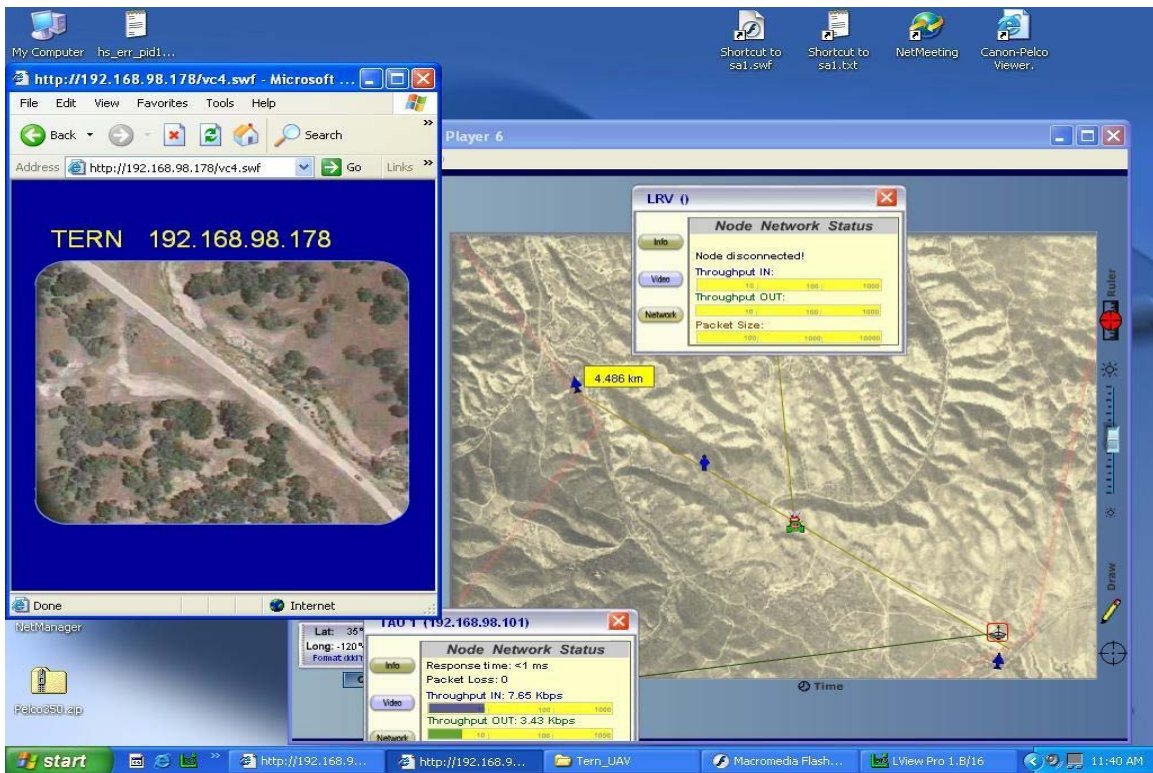


Figure 2. Mesh wireless networking with UAV at the distance of 4.3 km between neighboring nodes with good video feed.

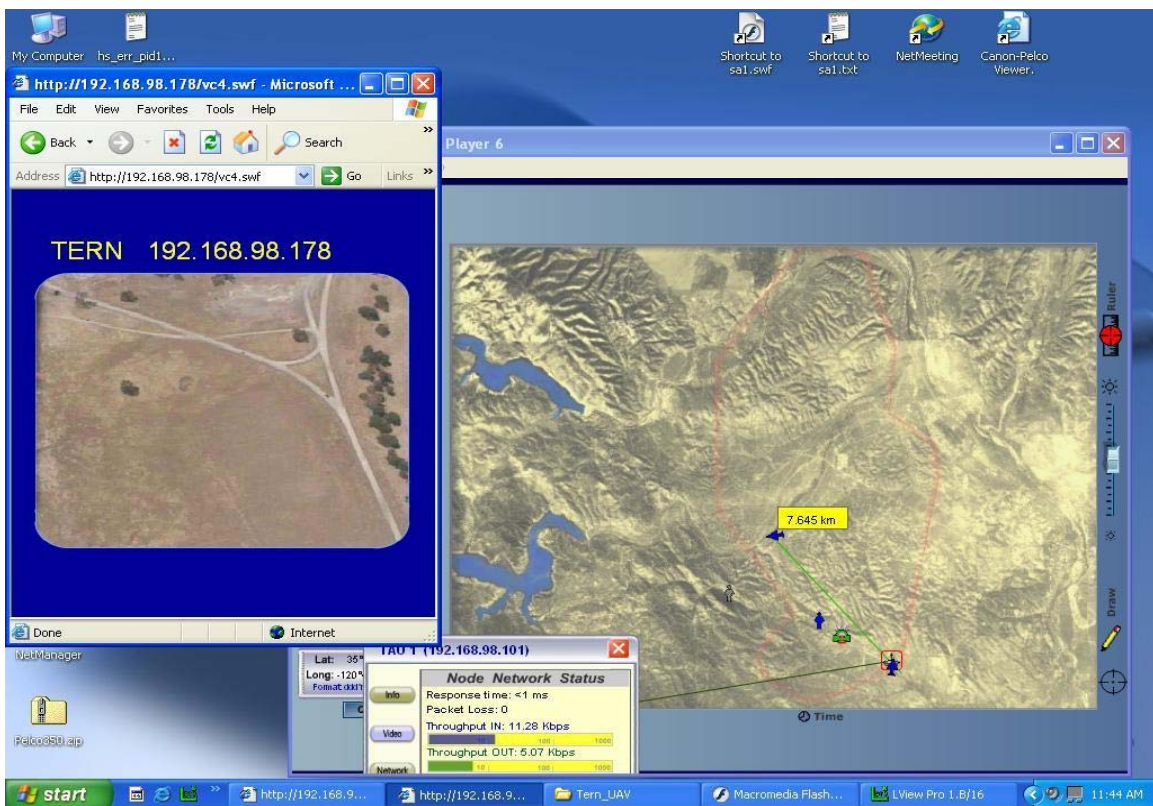


Figure 3: The UAV is 7.4 km apart of the neighboring node, network is still working, but video quality is no longer operationally viable.

Self-aligning OFDM Node controllable over the radio link

Current TNT experimentation network uses OFDM 802.16 technology to provide a long haul link enabling high bandwidth connectivity up to 54 Mbps. It utilizes technology of Redline Communications (<http://redlinecommunications.com/>), the TNT's industrial partner, manufacturing wide range of OFDM equipment. The basic Redline OFDM node (Figure 4) consists of IP-enabled high frequency radio and outdoor transceiver. This set may work with Omni directional and/or variety of directional antennae.



Figure 4. Typical Redline OFDM node.

The Redline OFDM radio is designed to provide a long haul 802.16 wireless link between stationary nodes, which limits its direct application to tactical nodes, required to be highly mobile, rapidly deployable, robust, and easily operable. More so, allocating the OFDM antennas to tactical vehicles and other mobile nodes, requires precise simultaneous alignment at both ends of the OFDM link.

This issue may be resolved by utilizing self-aligning OFDM (SAOFDM) unit with OFDM antenna controlled over the wireless link, which is separate from the main OFDM link. The control link would be used for obtaining SAOFDM unit GPS position and OFDM link signal strength (RSSI). Based on this information the antenna control commands will be sent to mechanical pan-tilt rotator enabling antenna alignment, which in turn improves the OFDM link quality. The architecture of SAOFDM unit includes a set of new elements presented in Figure 5.

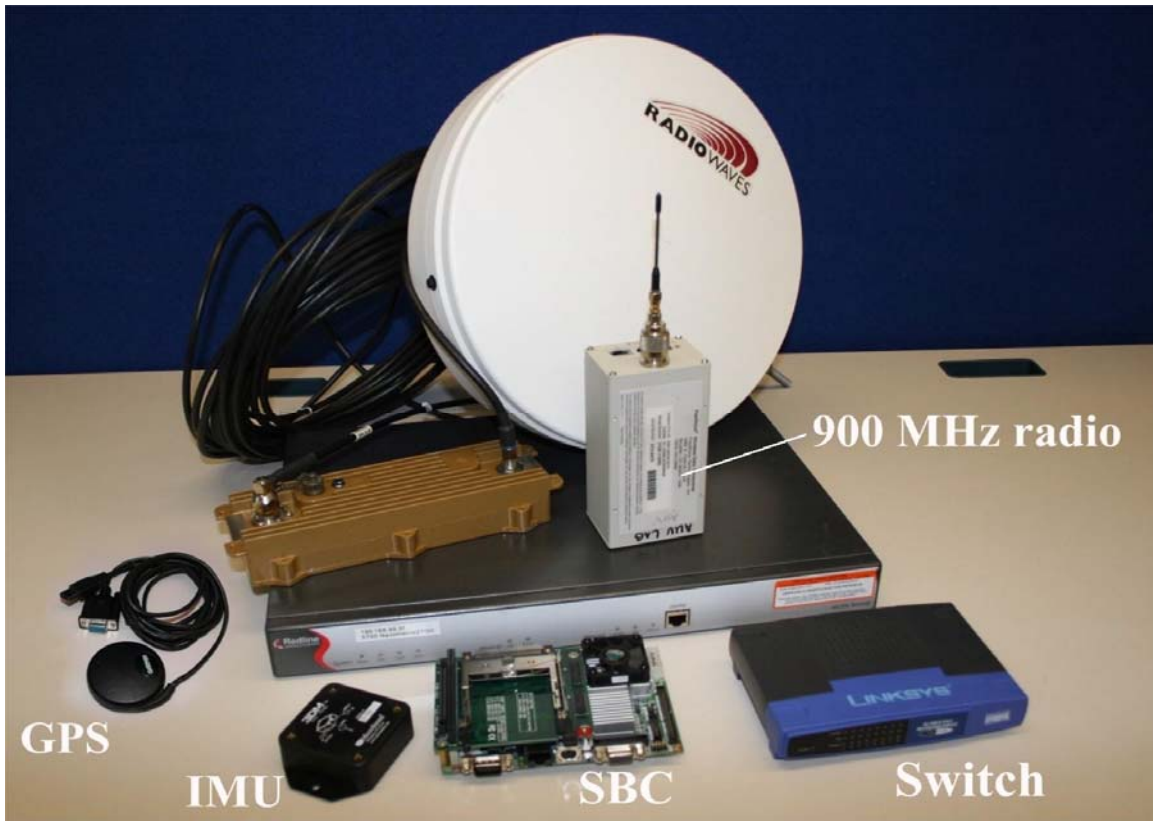


Figure 5. Additional elements of OFDM node

The key new element is commercial pan-tilt rotator (Figure 6), examples of which could be found at <http://www.dperception.com/>. The pan-tilt rotators are modular computer-controlled over the serial port devices designed for fast, accurate positioning of heavy payloads. They provide high torque, while maintaining speed, precision, and a very small form-factor.

Initially we envision the SAOFDM control link commands to be sent over the 900 MHz link using FeeWave Ethernet radio (<http://www.freewave.com/FGRHT900.html>) connected to the Single Board Computer (SBC) over the network switch. The SAOFDM architecture also requires two sensors: the GPS and IMU, both connected to the SBC for providing SAOFDM GPS position and antenna orientation.

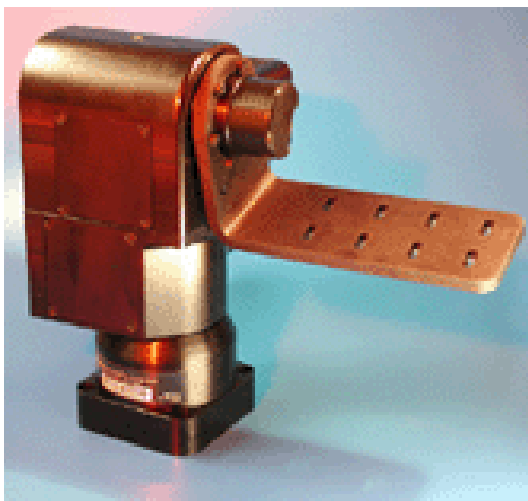


Figure 6. Pan-Tilt Units (PTU)

The SAOFDM control process is provided by Single Board Computer, which is running Windows XP operating system executing the following tasks:

- RSSI data gathering from AN-50e radio;
- obtain GPS and IMU data from the sensors;
- self-aligning algorithm;
- local area network;
- PTU rotator control over serial port.

Unfortunately the implementation of 900 MHz link is limited in the environment effected by radio link jamming or radio interference or non line of sight problems. To resolve the problem we propose to use multi-path capability enabling selection of alternative wireless links. Given the fact that control command are sent in a form of simple text message, which could be transferred by practically any low-bandwidth link, the other communication channels, such as Iridium and GPRS, may be employed. The GPRS is beneficial for urban area applications, as it's widely available via commercial cellular telephone services. The Iridium or similar satellite-based communication represent the only alternative that works when neither of above described links is operational. It is important to emphasize that SAOFDM control link may be extended by utilizing relays (repeaters) or multi-hop mesh networking techniques. Also, it is essential for the 900 MHz radio link technology to use the relay mode as a standard option. In case multi-hop mesh network is available, it could also be used to carry on the control link data.

The complete package of all devices representing proposed solution for low bandwidth SAOFDM control link is shown on Figure 7. Figure 8 illustrates the overall multi-path compatible equipment set.

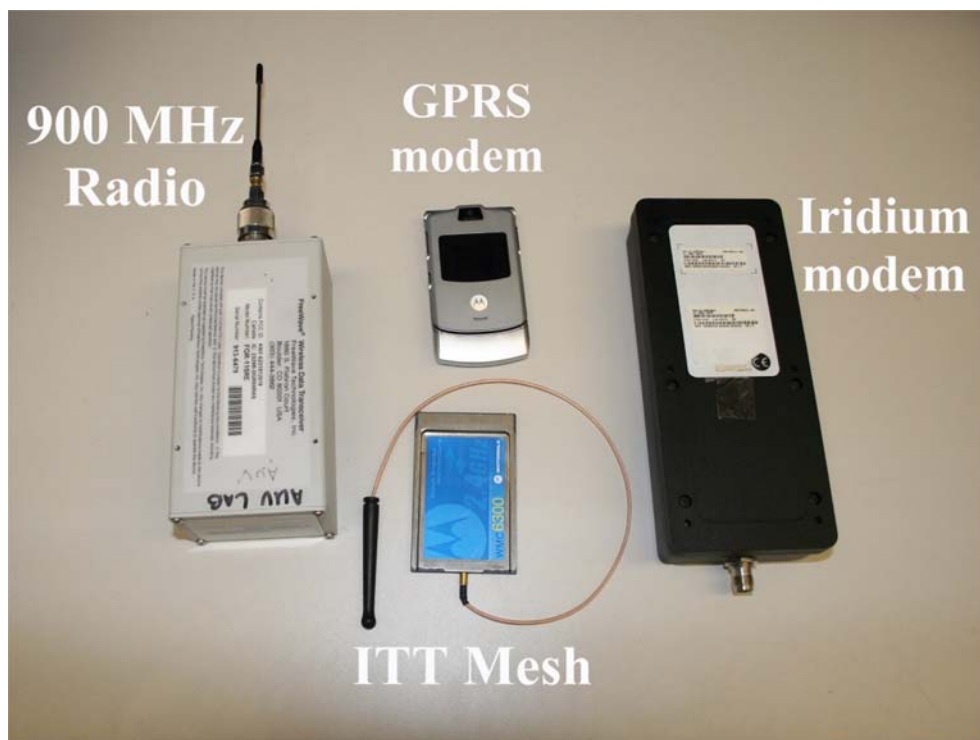


Figure 7. Control link communication devices



Figure 8. Overall equipment set.

The proposed solution enables the NoT process in the following way. Suppose you need to extend adaptive tactical network Ship 2 moving out of the Tactical Operation Center (TOC) to intercept the target. By remotely targeting the antenna directly of the Situational Awareness View (the control menu in Figure 9) the OFDM link is established. The red line highlights it is feasible.



Figure 9.

However, as local commander moves ship out to the point of intercept (Figure 10) the OFDM based tactical data link breaks down. The SA View shows it is infeasible, three OFDM WLAN circles don't overlap. The control panel shows Restore Link option.



Figure 10.

By initiating Restore Link option local or remote commanders are calling for UAV to fly out for extending the control link to Ship 2 target position. The next figure (Figure 11) shows that this solution is doable, and more so suggest the Way Point for UAV loitering.



Figure 11.

Figures 12 - 14 illustrate another example of utilizing OFDM node controllable over the radio link for supporting collaborative actions of small mobile units on the ground. Suppose, the received surveillance task requires stretching high bandwidth OFDM link from the site of the Tactical Operations Center to mobile node 3 joining the network. However, the link couldn't be established immediately because of terrain obstacles obstructing the TOC-mobile node 3 line-of-sight. At the same time, allocating additional mobile nodes 1 and node 2 along the valley would resolve the connectivity problem, subject to rapid remote OFDM antenna re-alignment. In this case radio control link would be used to transfer the GPS position for each pair of nodes trying to link, enabling initial antenna self-alignment, link quality feedback, and, if needed, manual antenna alignment at each node via the SAOFDM control panel interface. Using the SAOFDM Node Control panel local commander or small unit network operator could assign particular sequence of alignment procedures to get node 3 connected to the TOC as shown on Figure 13. Correspondingly, extending the control by the UAV utilizing the 900MHz relay node, as shown on Figure 14, would allow to connect with mobile unit 2.

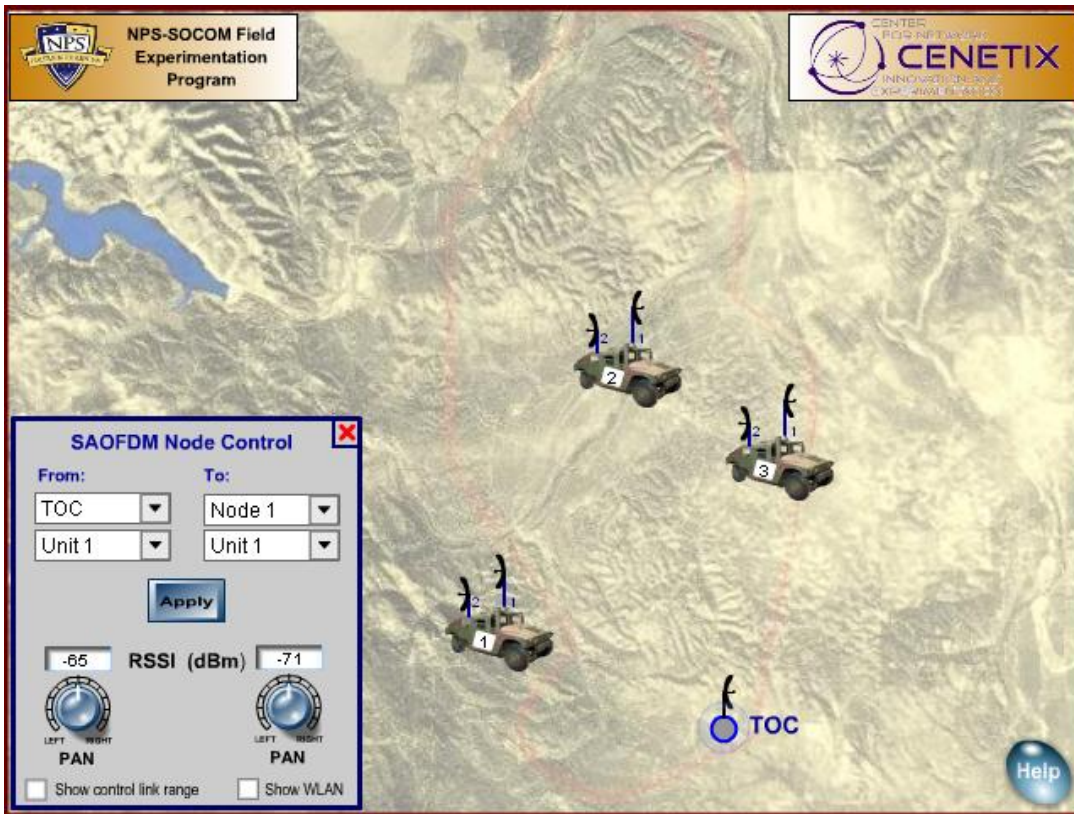


Figure 12. Original positions of TOC and three mobile nodes

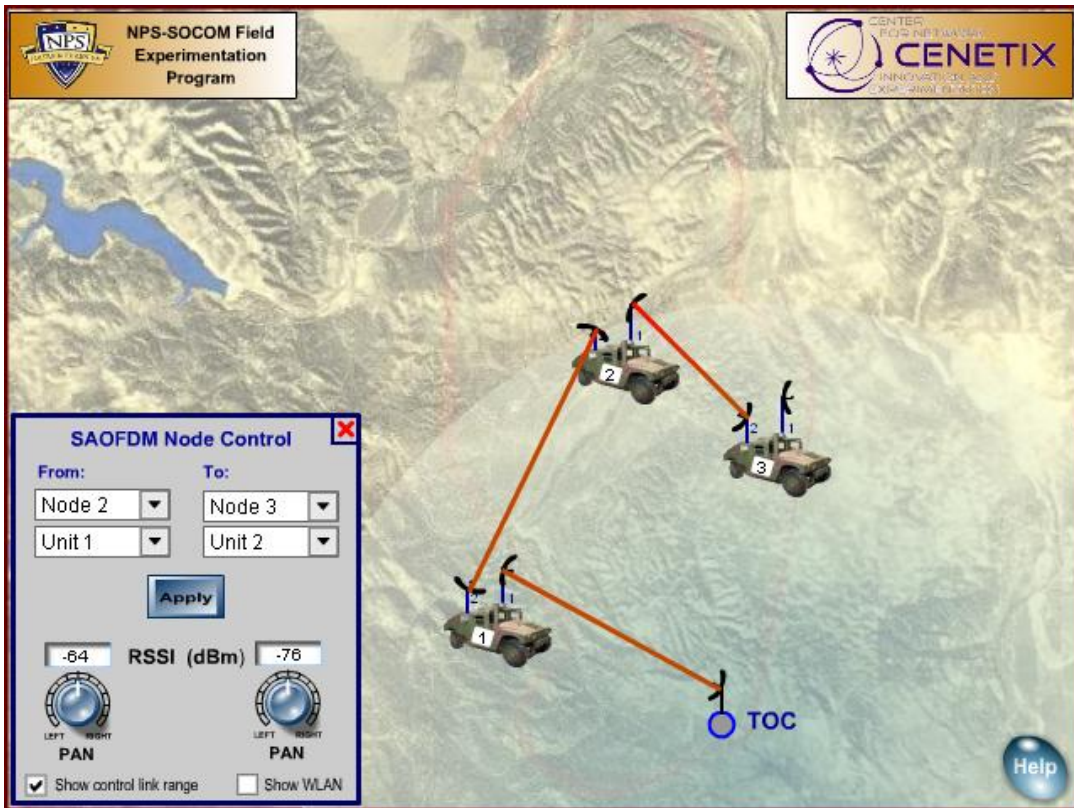


Figure 13. Self-aligning OFDM technique in action over 900 MHz control link

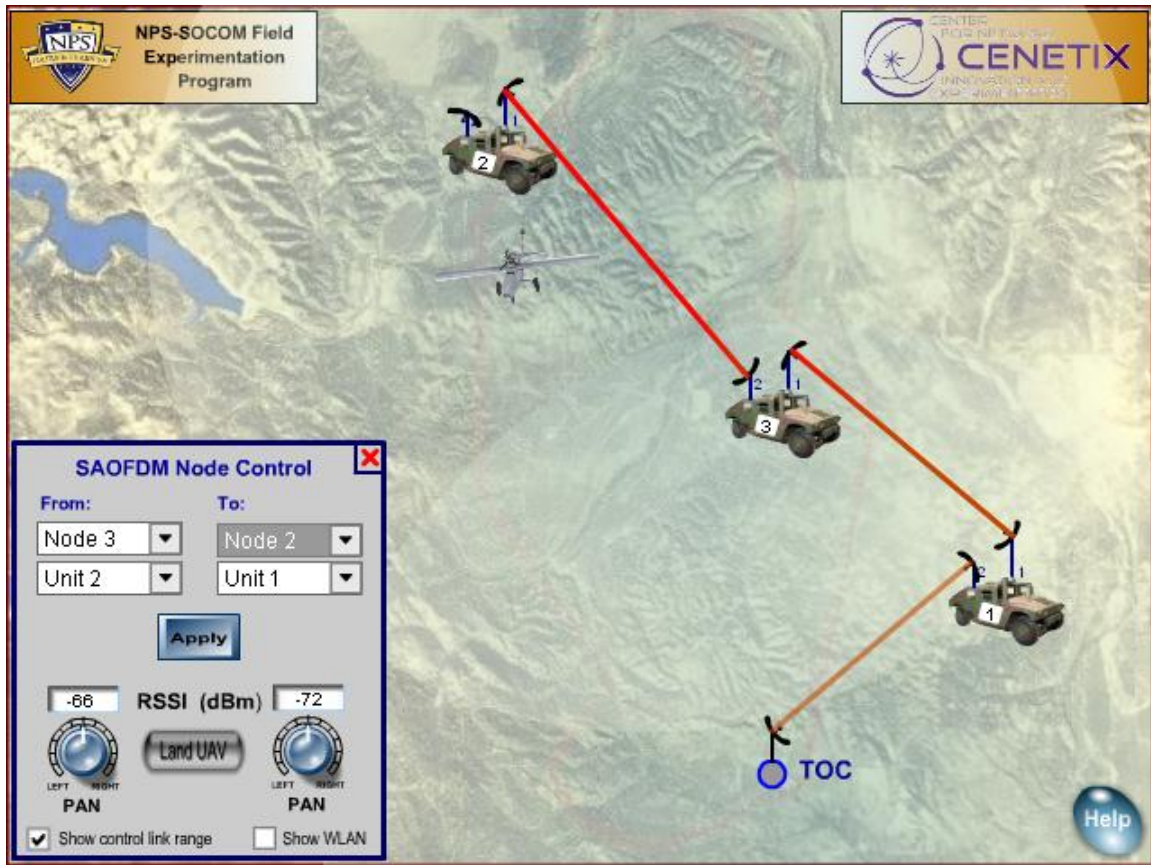


Figure 14. Self-aligning OFDM technique in action over 900 MHz control link extended by UAV relay node.

Conclusion

The concept of Network-on-Target makes self-forming tactical networking with unmanned vehicles feasible and rapidly deployable. It enables one of the most sought of emerging tactical network qualities, i.e. the capability of linking at the tactical level via the high bandwidth directional links. The SAOFDM technique provides this capability by enabling self-aligning of OFDM nodes via the separate radio control link. The proposed SAOFDM solution is one of the first steps in developing this new trend in agile adaptive tactical network. It will soon be tested in the series of High Value Target Search and Maritime Interdiction Operation experiments.

Acknowledgments

The authors are grateful to Dr. David Netzer for his unparalleled guidance and opportunity to work on this project.

References

- [1] Libicki, M., "Who Runs What in the Global Information Grid: Ways to Share Local and Global Responsibility", RAND Corporation, 2000.
- [2] Bordetsky A., Bourakov E., Hutchins S., and Kemple, B. *Network Aware Tactical Collaborative Environments*, In: Proceedings of 9th International Command and Control Systems and Technology Symposium, Copenhagen, 2004.
- [3] Alberts D. and Hayes R. *Campaigns of Experimentation: Pathways to Innovation and Transformation*, CCRP Publication Series, 2005.