

[REDACTED]

This document consists of <sup>83 mg</sup> 81 pages  
No 71 of 100 copies. Series A

HEADQUARTERS  
*Task Group 8.5*

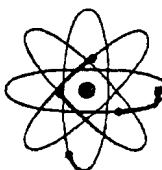
Operation Plan 2-1-62

Operation Order 2-1-62, Effective \_\_\_\_\_ 1962

for

OPERATION DOMINIC

[REDACTED]



DECLASSIFIED WITH DELETIONS BY DTRA  
AUTHORITY: EO 12958, 63 amended, and

DOE OISAZOC 000245

[Signature] DATE: 6 April 2007

DISTRIBUTION STATEMENT A  
APPLIES PER NTPR REVIEW.  
[Signature] DATE 12 Apr. 2007

**RESTRICTED DATA**  
[REDACTED]

Revised 22 March 1962

[REDACTED]

## Report Documentation Page

*Form Approved*  
*OMB No. 0704-0188*

Public reporting burden for the collection of information is estimated to average 1 hour per response, including the time for reviewing instructions, searching existing data sources, gathering and maintaining the data needed, and completing and reviewing the collection of information. Send comments regarding this burden estimate or any other aspect of this collection of information, including suggestions for reducing this burden, to Washington Headquarters Services, Directorate for Information Operations and Reports, 1215 Jefferson Davis Highway, Suite 1204, Arlington VA 22202-4302. Respondents should be aware that notwithstanding any other provision of law, no person shall be subject to a penalty for failing to comply with a collection of information if it does not display a currently valid OMB control number.

|  |                                    |  |  |                                  |                                 |
|--|------------------------------------|--|--|----------------------------------|---------------------------------|
| 1. REPORT DATE<br><b>22 MAR 1962</b>   | 2. REPORT TYPE<br><b>N/A</b>       | 3. DATES COVERED<br><b>23 APR 1962 - 31 JUL 1962</b> |  |                                  |                                 |
| 4. TITLE AND SUBTITLE<br><b>Headquarters Task Group 8.5 Operation Plan 2-1-62 Operation Order 2-1-62, Effective ____ 1962 for Operation Dominic</b>  |                                    | 5a. CONTRACT NUMBER                                  |  |                                  |                                 |
|  |                                    | 5b. GRANT NUMBER                                     |  |                                  |                                 |
|  |                                    | 5c. PROGRAM ELEMENT NUMBER                           |  |                                  |                                 |
| 6. AUTHOR(S)<br><b>Reeves, James E.</b>  |                                    | 5d. PROJECT NUMBER                                   |  |                                  |                                 |
|  |                                    | 5e. TASK NUMBER                                      |  |                                  |                                 |
|  |                                    | 5f. WORK UNIT NUMBER                                 |  |                                  |                                 |
| 7. PERFORMING ORGANIZATION NAME(S) AND ADDRESS(ES)<br><b>Headquarters Task Group 8.5 Las Vegas, Nevada</b>   |                                    | 8. PERFORMING ORGANIZATION REPORT NUMBER             |  |                                  |                                 |
| 9. SPONSORING/MONITORING AGENCY NAME(S) AND ADDRESS(ES)  |                                    | 10. SPONSOR/MONITOR'S ACRONYM(S)                     |  |                                  |                                 |
|  |                                    | 11. SPONSOR/MONITOR'S REPORT NUMBER(S)               |  |                                  |                                 |
| 12. DISTRIBUTION/AVAILABILITY STATEMENT<br><b>Approved for public release, distribution unlimited</b>  |                                    |  |  |                                  |                                 |
| 13. SUPPLEMENTARY NOTES<br><b>This revised Operation Plan 2-1-62 (Operation DOMINIC) is issued in its entirety and supersedes Operation Plan 2-1-62, issued 11 February 1962.</b>  |                                    |  |  |                                  |                                 |
| 14. ABSTRACT<br><b>The Atomic Energy Commission and the Department of Defense have been authorized by the President to make plans and preparations for a test series of nuclear weapons and devices during the Spring of 1962. This test series, as defined in Annex C, is titled Operation DOMINIC.</b> |                                    |  |  |                                  |                                 |
| 15. SUBJECT TERMS<br><b>Operation DOMINIC operation plan nuclear weapons testing Task Group 8.5</b>  |                                    |  |  |                                  |                                 |
| 16. SECURITY CLASSIFICATION OF:  |                                    |  | 17. LIMITATION OF ABSTRACT<br><b>SAR</b> | 18. NUMBER OF PAGES<br><b>82</b> | 19a. NAME OF RESPONSIBLE PERSON |
| a. REPORT<br><b>unclassified</b>   | b. ABSTRACT<br><b>unclassified</b> | c. THIS PAGE<br><b>unclassified</b>                  |  |                                  |                                 |

~~CONFIDENTIAL~~

This Revised Operation Plan 2-1-62 (Operation DOMINIC) is issued in its entirety and supersedes Operation Plan 2-1-62, issued 11 February 1962.

References:

- a. Operation Plan 2-62, Hq JTF-8, 23 Jan 62
- b. Draft Planning Directive, Hq TG-8.5, 15 Jan 62
- c. Command Program Schedule, Hq JTF-8, 17 Jan 62
- d. TWX, Director DMA to Manager ALO, file referral  
MA-DA-DBA dated 18 Dec 1961
- e. U. S. Atomic Energy Commission, Nevada Operations Office,  
Standard Operating Procedures, Pacific Operations,  
Las Vegas, Nevada

Time Zone: Z

1. Situation.

The Atomic Energy Commission and the Department of Defense have been authorized by the President to make plans and preparations for a test series of nuclear weapons and devices during the Spring of 1962. This test series, as defined in Annex C, is titled Operation DOMINIC.

These tests will be conducted at Christmas and Johnston Island, in the Oceania if and when authorized. The series as now proposed consists of approximately twenty-five detonations. Capability is being developed to initiate the test series by 23 April 1962. The series will be conducted, upon approval, as expeditiously as practicable, with a completion target date of no later than early July 1962.

2. Mission.

Task Group 8.5 will plan for, and provide, the AEC support required by JTF-8, Task Groups and Task Units in the conduct of Joint AEC/DOD nuclear test operations. In the conduct of this operation the Commander TG 8.5 will:

- a. Assist the Commander JTF-8 in determining the degree and type of support required to support the operation.
- b. Provide architectural-engineering, construction, supply, housekeeping and supporting services as directed, and mutually agreed by the AEC and the DOD.
- c. Command TG 8.5 and exercise operational control over units attached to the Task Group.
- d. Comply with the provisions of HQ JTF-8 Administrative Plan when issued.
- e. Provide security as required in Annex D.
- f. Provide communications as directed in Annex H.
- g. Conduct radiological safety operations as directed in Annex E.
- h. Conduct evacuation in accordance with emergency and routine evacuation and re-entry plan and natural defense plan, Annex F.

- i. Procure and account for those items of supplies and equipment required by JTF-8 which are not readily procurable by them through normal service or laboratory channels during the operation.
- j. Roll-up and dispose of supplies and equipment procured for and by JTF-8 as directed by CJTF-8.
- k. Perform such other tasks as assigned by CJTF-8.

3. Execution.

a. Concept of Operations.

- (1) The scientific effort of both the AEC and the DOD is the primary purpose of the test series and the priority attention of JTF elements has been directed to this purpose.
- (2) The operation is planned with two basic stages, one of which consists of approximately twenty-two (22) detonations to secure diagnostic data and is of primary interest to the AEC. All AEC events will be staged from Christmas Island. The DOD stage will utilize Johnston Island and vicinity for detonations.
- (3) The TG 8.5 mission visualizes support to JTF-8 elements at islands in the Hawaiian Chain, Johnston Island and various weather islands in the Pacific Ocean area.

b. Task Organization TG 8.5

- (1) See Annex A, Organization.
- (2) Composition TG 8.5

Organization

TG 8.5

Official

Command Section

CDR, TG 8.5  
DEPCDR, TG 8.5

James E. Reeves  
Joe B. Sanders

~~SECRET~~

Organization

TG 8.5

Official

Command Section

Administrative Officer  
Asst. Administrative Officer\*

Edward A. Butts  
Sherman H. Sullivan\*

Staff

S-1  
S-2  
S-3/4  
Communications Officer  
Engineer Officer  
Financial Management Officer

Fred W. Kohner  
William Adair  
Robert E. Miller  
James A. Sugden  
Charles S. Huff  
J. D. Yates

Support Coordination Section

AEC Coordinator  
H & M Coordinator  
AEC Contract Representative\*

Richard A. Moss  
Paul W. Spain  
Sherman H. Sullivan\*

Coordinators assigned by each Task Unit.

Pacific Operations Branch (POB)

Area Project Engineer  
Administrative Officer  
Communications Engineer  
Security Officer  
Industrial Safety and Rad-  
Safe Adviser  
Support Coordinator

L. J. Yelinek  
Marshall Page  
P. O. Buchholz  
Robert W. McCurtain  
H. P. Schiacks  
E. A. Schultz

\*Dual Position

~~SECRET~~

~~SECRET~~

| <u>Organization</u>            | <u>Official</u> |
|--------------------------------|-----------------|
| <u>Johnston Island Section</u> |                 |
| Project Engineer               | R. A. Hamlin    |

|                                 |            |
|---------------------------------|------------|
| <u>Christmas Island Section</u> |            |
| Project Engineer                | R. H. Shaw |

|                        |            |
|------------------------|------------|
| <u>Tutuila Section</u> |            |
| Project Engineer       | E. Wyakoop |

TU 8.5.1 (Holmes & Narver, Inc.)

|                             |                   |
|-----------------------------|-------------------|
| CDR                         | E. G. Bowen (H&N) |
| Coordinator, H&N Operations | P. W. Spain       |
| Project Operations          | J. P. Ryan        |
| Manager, Honolulu Office    | W. H. Rohrer      |
| Jobsite Resident Manager    |                   |
| (Johnston)                  | Charles Dunlap    |
| Jobsite Resident Manager    |                   |
| (Christmas)                 | J. W. Moore       |
| Security                    | George Porter     |

TU 8.5.2 (Scripps Institution of Oceanography)

|     |                        |
|-----|------------------------|
| CDR | Dr. William G. Van Dor |
|-----|------------------------|

TU 8.5.3 (AEC Environmental Program)

|                     |                       |
|---------------------|-----------------------|
| Project Coordinator | Dr. Gordon M. Dunning |
|---------------------|-----------------------|

(3) Composition of JTF-8, see Appendix 1, Annex A.

c. Responsibilities of Subordinate Organizational Elements--

Task Group 8.5

(1) Deputy Commander, Task Group 8.5

(a) The Deputy Commander, is delegated full responsibility, for the execution of the functions identified above, within the limit of his contractual authority. Those items which require contractual action in excess of the contractual authority of the Deputy Commander will be referred to the Commander, TG 8.5 for execution.

~~SECRET~~

**SECRET**

- (b) The Deputy Commander, will be assisted by an Administrative Officer assigned to the Command Section.

(2) Administration Section (S-1)

The Chief Administration Section (S-1) is responsible for:

- (a) Directing administrative functions including necessary administrative orders controlling and authorizing the movement of personnel assigned to TG 8.5.
- (b) Providing for the modification of contracts and necessary contract administration of support contractors.
- (c) Directing the financial and contract management of TG 8.5, including budgets, financial plans, and cost reports.
- (d) Personnel reports including strength and status.

(3) Security Officer (S-2)

The Security Officer, S-2, is responsible for:

- (a) Providing overall staff supervision of security operations TG 8.5 to assure compliance with directives and policy issued by CTG 8.5 or Headquarters JTF-8, for which action is to be taken by Pacific Operations Branch.
- (b) Establishing the basic security program of TG 8.5.
- (c) Developing and disseminating security measures for action by TG 8.5 elements.
- (d) Providing classification assistance to TG 8.5 elements.

**SECRET**

~~SECRET~~

- (e) Collaborating with JTF-8 in establishing security programs and policies.

(4) Chief, Support Plans and Logistics Section (S-3/4)

The Chief, Plans and Logistics Section (S-3/4) is responsible for:

- (a) Initiating procedures leading to the development of logistical requirements, including real estate, administrative and warehouse space, vehicles, manpower, POL, rad-safety, manpower estimates, communications in support of TG 8.5, and the Scientific Task Units, and in those cases where direct support is furnished to Headquarters JTF-8, identifying these requirements for support purposes.
- (b) Providing for the consolidation and coordination of requirements in terms of contractual capability and assignment of action responsibility to contractors.
- (c) Providing for the preparation of necessary plans, reports and support cost estimates.

(5) Engineer Officer

The Engineer Officer is responsible for:

- (a) Providing engineering review and approval of major base and scientific facilities to be constructed by the support contractors or sub-contractors.
- (b) Providing AEC coordination of engineering requirements with the Deputy Commander, TG 8.5.
- (c) Providing coordination for construction authorizations and acceptance of major shore facilities as directed by the Deputy Commander, TG 8.5.

~~SECRET~~

~~SECRET~~

(6) Support Coordination Group

The TG 8.5, Coordination Group, under the supervision of an AEC representative is responsible for:

- (a) Providing for the control, coordination, and authorization of construction, modifications, fabrication of items, and rehabilitation and modification of shore facilities, in support of the AEC Scientific Task Units.
- (b) Receiving and coordinating construction, fabrication, modification and rehabilitation requirements for HQ JTF-8 facilities ashore.
- (c) Providing for continuing liaison with the Scientific Deputy, and the Commander, TG 8.5 and his Deputy, regarding the support contractor's work status in executing authorized tasks.
- (d) Providing for the coordination of engineering and construction cost estimates.

(7) Pacific Operations Branch

(a) General

Under the direction of an Area Project Engineer assigned by the Atomic Energy Commission, the Pacific Operations Branch is responsible for:

- (1) Supervising the execution of construction and logistical functions authorized by the CTG 8.5 or his designee.
- (2) Providing for on-site supervision and necessary action to assure accomplishment of AEC functions including construction, administration, logistical support, security, rad-safety, communications, real estate, vehicle control, utilization of administrative and warehouse space, utilization of manpower, and other actions directed by the Command Section TG 8.5, CTG 8.6 at Johnston Island, and CTG 8.7 at Christmas Island.

~~SECRET~~

- ~~CONFIDENTIAL~~
- (3) Supporting Scientific Task Units and HQ JTF-8 on the Island of Oahu, including Hickam Air Force Base, and Barbers Point in functions relating to contract administration, work order authorization, security, vehicle, administrative and warehouse space, billeting, manpower and communications.

(b) Johnston Island Section

The Johnston Island Section under the direction of a Project Engineer reporting to the Area Project Engineer, (Pacific Operations Division).

- (1) Provides for on-site supervision and necessary action to assure accomplishment of AEC functions at Johnston Island in accordance with AEC-DOD funding agreements, Appendix 2, Annex B, and JTF-8, Headquarters PACAF agreements for utilization of Johnston Island.
- (2) Collaborates with Commander TG 8.6, in assuring maximum cooperation between AEC contractors and DOD elements located at Johnston Island.

(c) Christmas Island Section

The Christmas Island Section has functions similar to those of the Johnston Island Section with respect to accomplishment of AEC activities and collaboration with other elements.

(d) Tutuila Section

The Tutuila Section has functions similar to those of the Johnston Island Section.

(e) Other Islands

Necessary representatives of the AEC and support contractor organizations will be directed to

[REDACTED]

support other island operations. The functions identified above will be supervised by AEC and support contractor representatives, as directed by the Command Section, TG 8.5.

(8) Support Contractors

(a) Holmes & Narver, Inc. (H&N) (TU 8.5.1)

H&N, as an architect-engineer construction and management contractor for the Nevada Operations Office, will provide engineering, construction and logistical support, as directed and authorized by the Command Section, TG 8.5.

(b) Scripps Institution of Oceanography (TU 8.5.2)

As a Technical Support Contractor, provides technical advice and services to HQ JTF-8, thereby will:

- (1) Install, maintain and operate instrumentation for measuring water waves in critical areas.
- (2) Analyze data and prepare wave forecasts and hindcasts on day-to-day basis.
- (3) Install, operate, and maintain other instruments in deep water and on small islands to improve a capability for wave predictions.

(c) AEC Environmental Program (TU 8.5.3)

To be announced.

(d) Coordinating Instructions

- (1) This operations plan is effective for planning upon receipt and becomes effective as Operation Order 2-1-62 upon announcement by the CTG 8.5. Upon announcement the operational lines shown in Annex A also become effective.

~~SECRET~~

- (2) JTF-8 Command Program Schedule (CPS), 17 Jan 62, reference C and Appendix 3, Annex B, Administrative and Logistics Plan, is directed to be used in conjunction with this operations plan.
- (3) CTU 8.5.1 will develop a master TG 8.5 Command Program Schedule as soon as practicable, providing on current basis status of line items and analysis or comment as to attainments of objectives.
- (4) CTU 8.5.1 will identify to CTG 8.5 major tasks to be accomplished for periods prior to, during, and after each detonation. (References CPS forward).
- (5) Technical Direction of the AEC diagnostic program is that of the AEC. Direction will, however be exercised through the CJTF-8 and by him through the Scientific Deputy. The Scientific operations plan will be integrated under the direction of the Scientific Deputy and issued by the HQ JTF-8.
- (6) Direct Communication between TU 8.5.1 and Task Groups and Scientific Task Units, is authorized. TU 8.5.1 communications to HQ JTF-8 will be through the HQ TG 8.5 (Rear) or HQ TG 8.5 (Main or Advanced) as appropriate.
- (7) The funding for AEC costs of Operation DOMINIC, as well as those costs incurred by AEC, through its contractors, to support DOD on a reimbursible basis has been assigned to the Albuquerque Operations Office and thereunder to the Nevada Operations Office (TG 8.5).

Costs will be incurred by the AEC integrated contractor, Holmes & Narver, Inc., under Contract No. AT(29-2)-20, or EG&G under Contract No. AT(29-1)-1182, housed in these contractor's books, both for the account of AEC and the DOD.

~~SECRET~~

~~TOP SECRET~~

It is the policy of CTG 8.5 to have AEC-NOO integrated contractors perform as much of the administrative detail on operation as possible, including preparation of cost estimates, procurement, budgeting, accounting, supply functions, as well as construction.

The funding of the integrated contractors, Holmes & Narver and Edgerton, Germeshausen & Grier will be handled between these contractors and the Nevada Operations Office, Las Vegas, Nevada.

4. Administration and Logistics

See Annex B.

5. Command and Signal.

a. Command.

- (1) Upon a decision to resume testing and at such a date announced by the Task Force Commander the Commander TG 8.5 will report for operational purposes directly to the Task Force Commander as the senior AEC representative who has full authority to act for the Commission except as follows:
  - (a) The CTG 8.5 will continue to report to Gen. Mgr.-AEC for those continuing administrative functions which are the responsibility of the AEC.
  - (b) The Manager, NOO, will report to the General Manager, Headquarters AEC Washington, in accordance with recent commission action to establish the NOO. During the period in which DOMINIC is presently planned for execution, ALO will continue to provide staff assistance and support as authorized by the Manager, ALO.
- (2) Edgerton, Germeshausen & Grier, Inc., TU 8.1.6, will continue to report to the Manager, NOO, for administrative and contractual matters.

~~SECRET~~

b. Command Posts.

- (1) During the preparatory period the Headquarters TG 8.5 will be located at 2753 South Highland Drive, Las Vegas, Nevada.
- (2) During the operational period, Headquarters (Main) TG 8.5, will be located at 544 Onohia Street, Oahu, H. I.
- (3) During the operational period for missile launchings from Johnston Headquarters (Johnston-Advance) TG 8.5 will be located at Johnston Island.
- (4) During the operational period from AEC, detonations at Christmas Island Headquarters (Christmas-Advance) will be located at Christmas Island.
- (5) Headquarters TG 8.5 (Rear) will continue its location at Las Vegas, Nevada, throughout DOMINIC.

c. Signal.

See Annex H.

Acknowledge

JAMES E. REEVES  
COMMANDER, TG 8.5

OFFICIAL:

*James E. Reeves*  
MILLER:  
S-3

~~SECRET~~

~~SECRET~~

ANNEXES:

- A. Organization
- B. Administration and Logistics Plan
- C. Schedule of Events
- D. Security Plan
- E. Support to Meteorological and Radiological Safety Operations
- F. Natural Disaster, Emergency Routine Evacuation and Re-entry Plan
- G. Task Organization JTF-8
- H. Communications
- I. Table of Projects
- J. Distribution

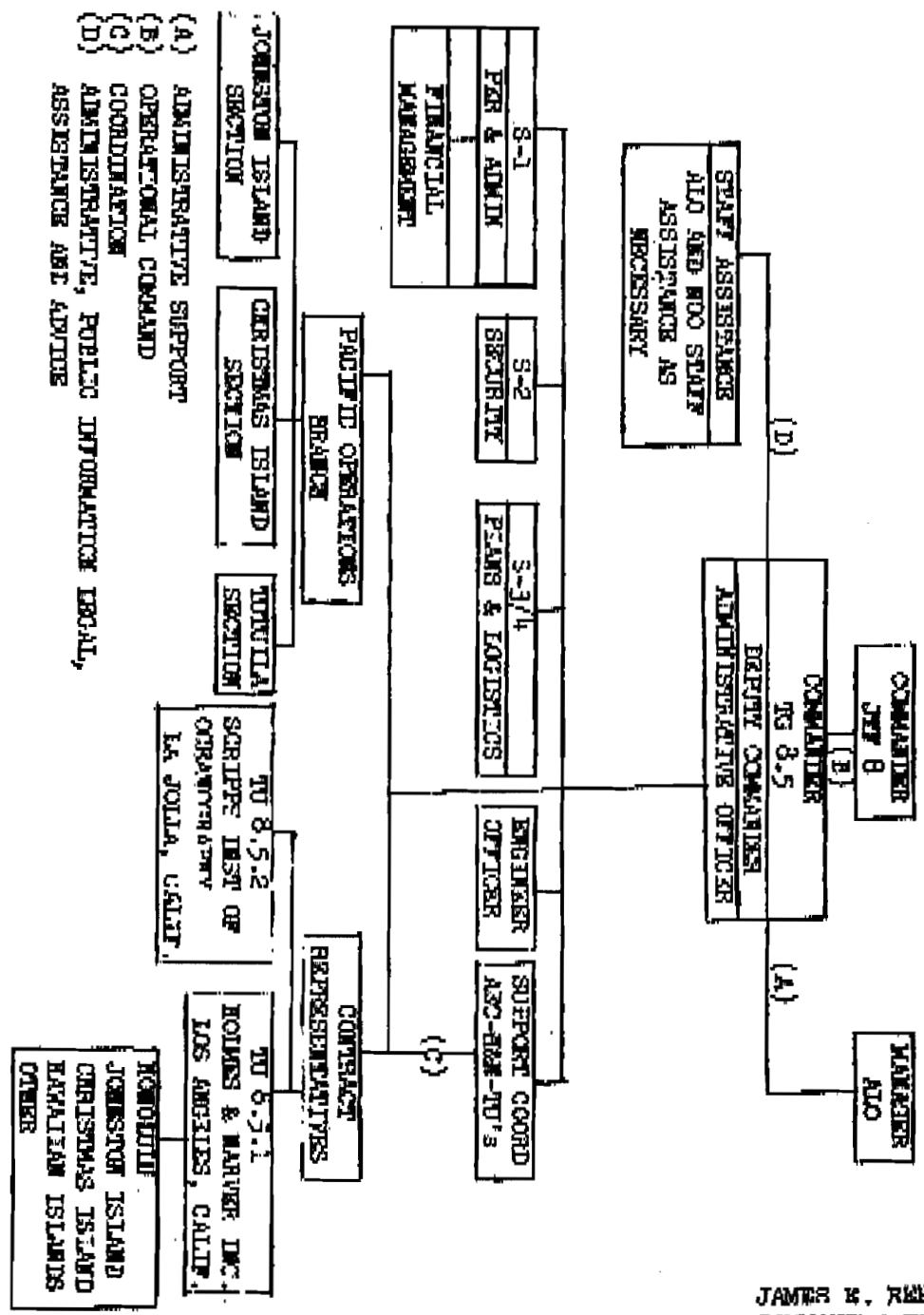
~~SECRET~~

**SECRET**

HEADQUARTERS, TASK GROUP 8.5  
Las Vegas, Nevada  
22 March 1962

Annex A (Operational Phase) to Operation Plan 2-1-62 - TG 8.5

JAMES E. REEVES  
COMMANDER TG 8.5

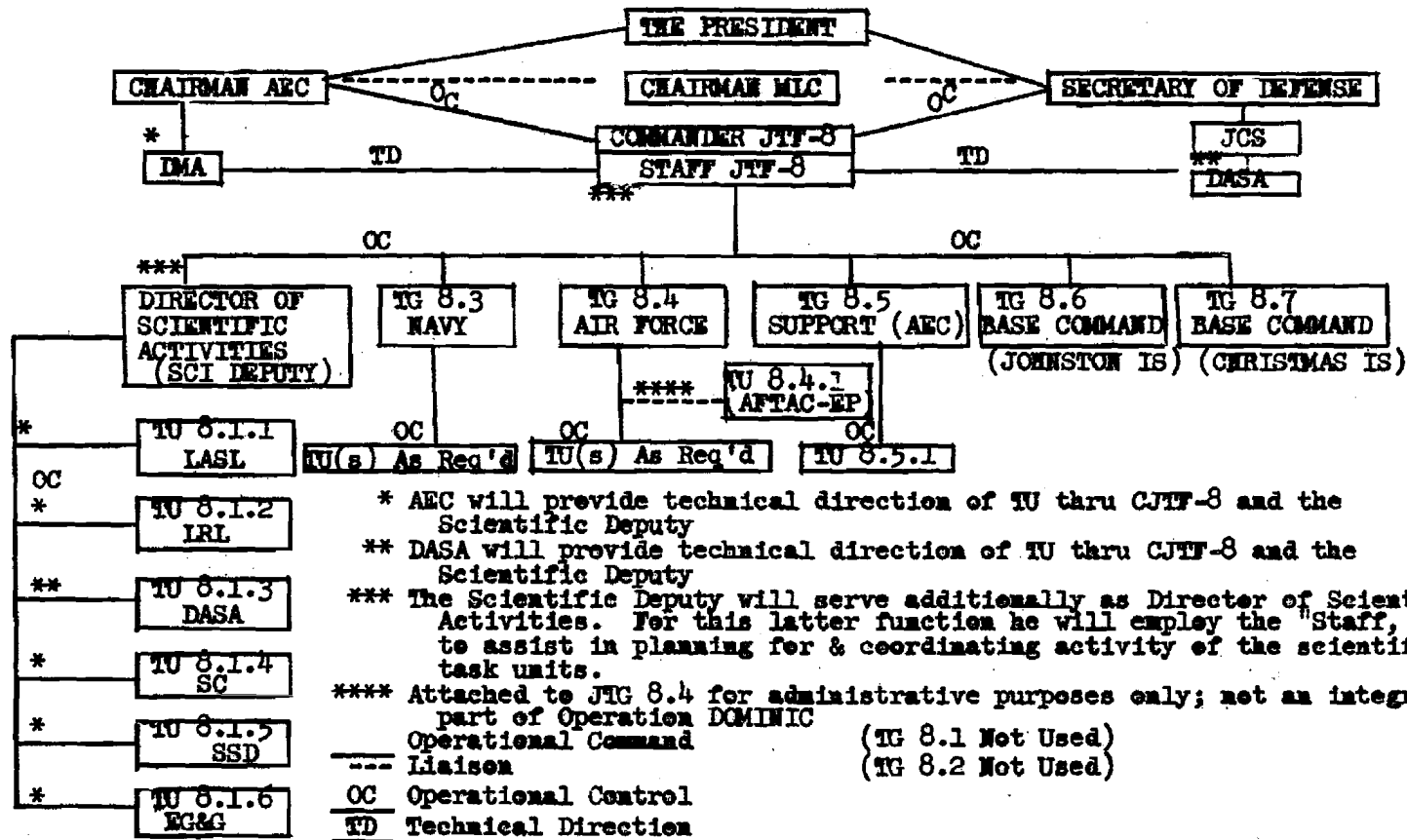


OFFICIAL  
MILLER  
3

~~SECRET~~

HEADQUARTERS, TASK GROUPS 8.5  
Las Vegas, Nevada  
22 March 1962

Appendix 1 to Annex A (Organization - Operation Phase) to Operation Plan 2-1-62 - TG 8.5



JAMES E. REEVES  
COMMANDER TG 8.5

-16-(A-2)-1

OFFICIALS  
MILITARY  
8-3

~~SECRET~~

~~SECRET~~

HEADQUARTERS, TASK GROUP 8.5  
Las Vegas, Nevada  
22 March 1962

Annex B (Administrative and Logistics Plan)  
to Operation Plan 2-1-62 - TG 8.5

1. Personnel.

The following policies and procedures are directed for Atomic Energy Commission (AEC) and Nevada Operations Office (NOO) contractor personnel participating in Operation DOMINIC.

a. Hours of Work.

Commencing 14 January 1962, and extending through 30 June 1962, an extended work week of fifty-four (54) hours is authorized on an as-required basis. Work week for contractor personnel in excess of fifty-four (54) hours will require additional authorization which shall be requested through normal contract administration channels.

Effective 26 February 1962, and until further notice, a sixty (60) hour work week is authorized at Christmas Island.

b. Travel Orders.

(1) Authority to issue travel orders on Military Air Transportation Service (MATS) and Military Sea Transportation Service (MSTS) has been delegated to the Command Task Group 8.5 (CTG 8.5). By direction Command Joint Task Force Eight (CJTF 8) the Task Group 8.5 (TG 8.5) will prepare military travel orders for all AEC and NOO contractor personnel.

(2) Authority to issue military travel orders has been further delegated to the following:

Fred W. Hohner, S-1 TG 8.5  
Nevada Operations Office  
2753 South Highland Drive  
P. O. Box 1676  
Las Vegas, Nevada

~~SECRET~~

~~SECRET~~

Sherman Sullivan, Chief  
Los Angeles Branch Office  
P. O. Box 5450  
Los Angeles 55, California

Marshall Page, Administrative Officer  
Honolulu Branch Office  
c/o Holmes & Narver, Inc.  
P. O. Box 580  
Honolulu 9, Hawaii

Virgil W. Lockett, Administrative Officer  
Nevada Operations Office  
P. O. Box 5400  
Albuquerque, New Mexico

- (3) Request for travel orders may be submitted to any of the above for accomplishment.
- (4) S-1, TG 8.5 will issue necessary implementing travel order instructions to AEC Scientific Task Units and TG 8.5 elements. A Certificate of Release from claim for injury or death is not required for personnel traveling on competent military orders authorizing travel on MATS aircraft under the provisions of AFR 76-15.
- (5) Passports and Visas

Official military travel orders issued in connection with Operation DOMINIC will be accepted in lieu of passports and visas by the United Kingdom Government for entry into Christmas Island, and by the New Zealand Government for entry into Rarotonga and Tongareva (Penrhyn). Visas will be required for UK Islands other than Christmas.

## 2. Vehicle Utilization.

In view of the widely dispersed work locations and temporary places of domicile of personnel employed in the Hawaiian Islands, as part of Operation DOMINIC, that portion of the policy expressed in AEC Manual Chapter 5141-02 pertaining to the use of vehicles between domiciles and place of employment is waived. The following conditions, however, are announced:

~~SECRET~~

- a. Public transportation will be used to move employees between their place of domicile and place of employment; except in those cases when the contractor reasonably determines, using criteria set forth in AEC Manual Chapter 5141-041a, that such transportation is inadequate to meet operational requirements. When such determinations are made, Government-owned or leased vehicles may be authorized by contractors for transportation, using Form AL-564 for such authorization.
- b. All authorizations will give consideration to effecting maximum use of pool transportation.
- c. Under conditions where Government-owned or leased vehicles must be stored at Government expense, such storage will be arranged by the support contractor, Holmes & Narver, Inc.
- d. Approvals for use of vehicles between domicile and place of employment must be signed by a responsible designated official of the contractor.

For Contract Administrators: Contract Administrators are requested to obtain a current copy of contractors' regulations establishing penalties for contractor employees who willfully use or authorize the use of Government-owned or leased vehicles for other than official purposes, providing copies as follows:

Mr. Joe B. Sanders  
U. S. Atomic Energy Commission  
Nevada Operations Office  
P. O. Box 1676  
Las Vegas, Nevada

Mr. L. J. Yelinek, Area Project Engineer  
Honolulu Branch Office  
c/o Holmes & Narver, Inc.  
P. O. Box 580  
Honolulu 9, Hawaii

ATTN: E. A. Schultz

The above policy is applicable at this time to contractor employees only.

~~SECRET~~

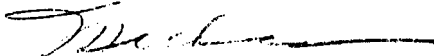
~~SECRET~~

3. Administrative Procedures.

Standard Operating Procedures, Nevada Operations Office,  
Pacific Operations, Las Vegas, Nevada, dated 22 March, 1962  
is by reference a part of the annex.

JAMES E. REEVES  
COMMANDER TG 8.5

OFFICIAL:

  
MILLER  
S-3

-20-(B-4)

~~SECRET~~

~~SECRET~~

HEADQUARTERS, TASK GROUP 8.5  
Las Vegas, Nevada  
22 March 1962

Appendix 1 (Engineering, Construction and Logistical Procedures)  
to Annex B (Administration and Logistics)  
to Operation Plan 2-1-62 - TG 8.5

1. Engineering and Construction Criteria.

- a. Scientific Task Units, Headquarters JTF-8 and Task Groups are authorized to submit engineering and construction criteria as action requirements for accomplishment by the TG 8.5. Criteria will be submitted in sufficient copies to provide copies to the following:

|  |                      |
|--|----------------------|
| Joe B. Sanders<br>Deputy Commander TG 8.5<br>Nevada Operations Office<br>U. S. Atomic Energy Commission<br>P. O. Box 1676<br>Las Vegas, Nevada | Action               |
| Joe B. Sanders<br>Deputy Commander TG 8.5<br>Nevada Operations Office<br>U. S. Atomic Energy Commission<br>P. O. Box 580<br>Honolulu 9, Hawaii | Action<br>(2 copies) |
| Paul W. Spain<br>Holmes & Narver, Inc.<br>849 South Broadway<br>Los Angeles 14, California   | Information          |
| Sherman H. Sullivan, Chief<br>Los Angeles Branch Office<br>U. S. Atomic Energy Commission<br>P. O. Box 5450<br>Los Angeles 55, California      | Action               |

ATTN: Richard O. Moss

~~SECRET~~

~~SECRET~~

C. S. Huff, Chief  
Engineering & Construction Section  
(S-6)TG 8.5  
Nevada Operations Office  
U. S. Atomic Energy Commission  
P. O. Box 1676  
Las Vegas, Nevada

Information

S. P. Howell  
Holmes & Narver, Inc.  
Special Projects Division  
849 South Broadway  
Los Angeles 14, California

Information

Alternate: H. F. Perla

J. P. Ryan  
Holmes & Narver, Inc.  
Special Projects Division  
849 South Broadway  
Los Angeles 14, California

Information

Alternate: R. J. Binnall

In addition, distribution will be furnished by the originating user to the other Scientific Task Units.

Correspondence originating with the Support Coordination Committee requiring AEC action shall be addressed as follows:

J. B. Sanders  
Deputy Commander TG 8.5  
Nevada Operations Office  
U. S. Atomic Energy Commission  
P. O. Box 1676  
Las Vegas, Nevada

Action

J. B. Sanders  
Deputy Commander TG 8.5  
Nevada Operations Office  
U. S. Atomic Energy Commission  
P. O. Box 580  
Honolulu 9, Hawaii

Action  
(2 Copies)

~~SECRET~~

~~SECRET~~

Sherman H. Sullivan, Chief  
Los Angeles Branch Office  
U. S. Atomic Energy Commission  
P. O. Box 5450  
Los Angeles 55, California

Action

ATTN: Richard O. Moss

C. S. Huff, Chief  
Engineering & Construction Section  
(S-6) TG 8 5  
Nevada Operations Office  
U. S. Atomic Energy Commission  
P. O. Box 1676  
Las Vegas, Nevada

Information

S. P. Howell  
Holmes & Narver, Inc.  
Special Projects Division  
849 South Broadway  
Los Angeles 14, California

Information

Alternate: H. F. Perla

J. P. Ryan  
Holmes & Narver, Inc.  
Special Projects Division  
849 South Broadway  
Los Angeles 14, California

Information

Alternate: R. J. Binnall

Richard E. Reed  
Holmes & Narver, Inc.  
Honolulu Branch Office  
P. O. Box 580  
Honolulu 9, Hawaii

Information  
(2 Copies)

R. W. Newman, J-6  
Los Alamos Scientific Laboratory  
P. O. Box 1663  
Los Alamos, New Mexico

Information

Alternate: Mr. Rea Blossom

~~SECRET~~

~~SECRET~~

R. B. Petrie  
University of California  
Lawrence Radiation Laboratory  
P. O. Box 808  
Livermore, California

Information

Alternate: Mr. W. A. Hamilton

D. G. Beatson  
Organization 7246-4  
Building 880, Room 16  
Sandia Corporation  
Sandia Base  
Albuquerque, New Mexico

Information

Alternate: Mr. N. A. Littrell

F. I. Strabala  
Edgerton, Germeshausen & Grier, Inc.  
160 Brookline Avenue  
Boston 15, Massachusetts

Information

Alternate: Mr. Harold Sauer

Lt. Col. B. C. Rowen  
FCWT  
Field Command  
Defense Atomic Support Agency  
Sandia Base  
Albuquerque, New Mexico

Information

Alternate: Captain M. L. Walters

Lt. Col. Rodger Ray  
Joint Task Force EIGHT  
DASA Annex  
Washington 25, D. C.

Information

Immediately upon receipt of approval from the Chief, Los Angeles Branch, the support contractor will initiate work upon the user's request.

b. Preliminary Drawings.

Preliminary drawings will be submitted by the support contractor to the user and the Chief, Los Angeles Branch for approval.

~~SECRET~~

~~CONFIDENTIAL~~

c. Final Drawings.

After review and comment by the user, final drawings will be approved by the Chief, Los Angeles Branch. Disposition of final drawings will be made to members of the S-6 Coordination Group.

d. As-Built Drawings.

The support contractor is responsible for preparing and keeping current as-built drawings for all facilities constructed during Operation DOMINIC.

2. Logistical Criteria.

- a. Logistical criteria will be submitted to provide action and information copies as indicated below:

|   |             |
|---|-------------|
| J. B. Sanders<br>Deputy Commander TG 8.5<br>Nevada Operations Office<br>U. S. Atomic Energy Commission<br>P. O. Box 1676<br>Las Vegas, Nevada | Action      |
| J. B. Sanders<br>Deputy Commander TG 8.5<br>Honolulu Branch Office<br>U. S. Atomic Energy Commission<br>P. O. Box 580<br>Honolulu 9, Hawaii   | Information |
| Paul W. Spain<br>Holmes & Narver, Inc.<br>849 South Broadway<br>Los Angeles 14, California  | Information |
| Project Engineer<br>U. S. Atomic Energy Commission<br>A.P.O. 105, P. O. Box 200<br>San Francisco, California                                  | Information |
| Project Engineer<br>U. S. Atomic Energy Commission<br>A.P.O. 86 (Unclassified)<br>San Francisco, California                                   | Information |

~~CONFIDENTIAL~~

~~SECRET~~

- b. Upon receipt of requirements, necessary coordination will be effected by the support contractor and TG 8.5 (Rear), and the support contractor or other contractors authorized to initiate appropriate action. Authorization will be approved by Commander, TG 8.5, his Deputy or designee.
- c. Necessary work orders will be prepared by the architect engineer and approved by the ABC representatives at Los Angeles, Johnston Island, Christmas Island, Tutuila, or Honolulu, consistent with their delegation of contractual authority and based upon the prior authorization indicated above.
- d. Copies of authorizations and work orders will be provided the logistics representatives of each Task Unit, and the S-1, S-4, Support Coordination Group, Chief, Los Angeles Branch and Deputy Commander, TG 8.5.

JAMES E. REEVES  
COMMANDER TG 8.5

OFFICIAL:

MILLER  
S-3

~~SECRET~~

Appendix 2 (AEC-DOD Costs and Responsibilities)  
to Annex B (Administration and Logistics)  
to Operation Plan 2-1-62 - TG 8.5

AGREEMENT BETWEEN

ATOMIC ENERGY COMMISSION AND DEPARTMENT OF DEFENSE

ON

COSTS AND RESPONSIBILITIES

FOR

NUCLEAR TEST OPERATIONS AT OFF-CONTINENT TEST SITES

A. PURPOSE

1. The purpose of this agreement is to provide a mutually satisfactory, general framework within which the Atomic Energy Commission (AEC) and the Department of Defense (DOD) may, on an equitable basis, delineate primary responsibilities of each agency, and budget and fund costs for joint AEC-DOD nuclear test operations at the off-continent test sites. The concept of joint AEC-DOD operations at the off-continent test sites encompasses buildup, operations, and rollup.

B. GENERAL

1. Except as modified by specific paragraphs below, the costs of the various test projects connected with the operation shall be borne by the agency establishing the specific project.
2. The costs of projects of mutual interest to both agencies will be prorated in proportion to the degree of interest.
3. Such equipment as is reasonably available from the stocks of either agency will, upon request, be furnished to the other agency on a loan basis at no cost except that of operating, safeguarding, and maintaining the equipment. The AEC will not, in general, request through military channels equipment available from commercial sources. The borrowing agency will not be held responsible for normal wear and tear but will exercise adequate control and care of the equipment. Equipment on loan which is lost, destroyed, or damaged beyond economical repair will be accounted

~~CONFIDENTIAL~~

for under the existing regulations of the owning agency. The borrowing agency will not be responsible for payment for any equipment on loan which is lost, destroyed, or damaged beyond economical repair, except where such loss, destruction, or damage results from willful misconduct, gross negligence, or failure to exercise good faith on the part of an employee of the borrowing agency, or on the part of a corporate officer or the person having entire supervision of the work at the off-continent test site of a contracting firm of the borrowing agency.

4. The loan of marine craft is a special case and is governed by a joint AEC-Department of Navy agreement quoted below:

"Effective this date, the following terms and conditions will apply to any loans of craft made in the future by the Navy Department to the Atomic Energy Commission. In addition, these terms and conditions will be applicable to Navy craft in the custody of the Atomic Energy Commission as of this date, insofar as applicable.

- "1. The Navy Department, upon request of the Atomic Energy Commission will lend to the AEC such craft as can be made available and as are required in the prosecution of projects which are the responsibility of the AEC. Loan of such craft shall be made on custody receipt without charge for the capital value of the craft.
- "2. The AEC will provide funds on request by the Navy for activation, if required, and for preparing for operation and tow, if necessary, any craft made available to the AEC, including funds to procure additional spare parts and accessories required for operation of the craft. Normal overhead will be charged for this work.
- "3. Delivery of craft that are loaned to the AEC under this agreement will be on a "where is" basis. Where practicable, available Navy transport will be used to redeploy craft. However, any expenses beyond normal Navy operating expenses, incurred in redeployment of craft, will be borne by AEC. Return delivery of these craft will be at the point of original transfer or at a point mutually agreed upon.

~~CONFIDENTIAL~~

~~SECRET~~

- "4. a. The Atomic Energy Commission shall be responsible for the operation, protection, security, repair and maintenance of all craft loaned to it by the Navy while such craft are in its custody or the custody of others acting for the Commission.
- b. To assure that craft in the custody of the Atomic Energy Commission under the terms of this agreement are maintained at satisfactory Navy standards, they will be subject to the routine material inspection normally conducted by the Navy for naval craft. The scheduling of these inspections will be mutually agreed upon by representatives of the Navy and AEC in the field.
- "5. a. Upon transfer of Naval craft from the Navy to the AEC and return of such craft to the Navy by the AEC, joint inspections of craft so transferred or returned will be conducted. Such inspections will be conducted by an appropriate board appointed jointly by the Commander in Chief, U. S. Pacific Fleet and the Manager, Albuquerque Operations Office, AEC and composed of both Navy and AEC members. The reports of the above board will be itemized in sufficient detail to enable allocations to be made, upon return of craft to the Navy, of repair costs properly chargeable to each party in conformance with this agreement. These reports will be forwarded to the Bureau of Ships via the Naval command from which the craft are obtained and the Commander in Chief, U. S. Pacific Fleet with copies of the original and all endorsements to the Chief of Naval Operations, AEC Washington, other AEC agencies and Naval material bureaus as appropriate. The work to be performed in repairing craft and allocation of costs properly chargeable to each party for that work will be resolved by the above boards in the field, and only such items which cannot be resolved satisfactorily by them will be referred to the Chief of Naval Operations and the Atomic Energy Commission. The AEC is responsible for funding only the costs necessary to restore craft to a material condition comparable to that existing when received. In determining the costs chargeable to AEC, consideration will be given to the effects of normal wear and tear. Normal overhead will be included in computing costs chargeable to the AEC.

~~SECRET~~

~~SECRET~~

"b. If subsequent to commencing repairs on craft, the Navy determines that additional work is necessary beyond that agreed to initially by the above joint boards, the AEC shall not be responsible for any portion of the funds covering the additional work until such time as a joint board as outlined above has convened and agreed to an apportionment of the additional costs between the Atomic Energy Commission and the Navy.

"c. The Atomic Energy Commission shall not be liable for payment for loss of Naval craft in its custody. Final action by the Department of the Navy to strike a craft will likewise relieve the AEC from obligation to effect repairs to that particular naval craft.

"6. Any craft loaned to the AEC, if required for Navy use prior to completion of the work for which obtained, shall be returned to the Navy custody upon request on thirty days' notice."

5. The transfer of subsistence in kind at the off-continent test sites between the AEC and the military is authorized. Each agency will reimburse the other for meals eaten ashore or on board ship by its personnel in the messes of the other. Prices for meals served by messes on shore will be established by mutual agreement. Prices for meals furnished on board ship will be established by Navy and Military Sea Transportation Service (MSTS) directives. Appropriate records will be kept at both AEC and Armed Forces messes which will permit periodic reconciliation of accounts.
6. Cross-servicing is authorized between elements of the DOD and the AEC and its contractors. Specific authorization will be issued in accordance with standards mutually agreeable to the Albuquerque Operations Office (ALOO) and the Joint Task Force (JTF). The cost of reimbursable work performed in connection with cross-servicing authorizations will be accumulated and billed in accordance with the standard accounting practices of the performing agency.
7. A delineation of responsibilities, and a method for the administration, performance, and reporting of stevedoring operations at off-continent sites, involving stevedoring labor and equipment and including marine craft and craft operators for loading and off-loading supplies, materials,

~~SECRET~~

~~SECRET~~

and equipment to or from ships at off-continent sites will be arrived at by a separate Stevedoring Agreement between the ALOO and the JTF.

8. Except for matters covered in sub-paragraph B4 above, decisions on interpretations of these provisions or on allocation of specific costs shall be the joint responsibility of the Task Force Commander for the DOD and the Manager, ALOO, for the AEC.

C. COSTS AND RESPONSIBILITIES TO BE ASSUMED BY THE AEC IN SUPPORT OF NUCLEAR TEST OPERATIONS

1. Cost of and construction of all base facilities at the off-continent test sites required by the AEC for military and AEC support of test operations.
2. Cost of maintenance of all base facilities (buildings, structures, installed equipment, roads and airstrips, piers, POL and utility systems, and communications systems) at the off-continent test sites which have been provided for or by the AEC for support of test operations, except that the DOD will be responsible for the establishment and maintenance of a JTF communications center and military communications and navigation systems which may be required in support of test operations.
3. Cost of operation of all fixed plant and utility systems (power, water, sewage, POL, and communications) provided by, or for the AEC for support of test operations except that the DOD will be responsible for operation of a JTF communications center and military communication and navigation systems which may be required in support of test operations.
4. Cost of all equipment, supplies, and material purchased by the Armed Forces at the specific request of the AEC.
5. Cost of modifications of material and equipment when such modifications are made at the specific request of the AEC, except that modifications to ships and aircraft may be subject to mutual agreement as to the pro rata share of cost.
6. Cost of all normal AEC administration, including salaries, subsistence, per diem, etc., of personnel employed by the AEC and its contractors in connection with the AEC's projects and programs.

~~SECRET~~

- ~~CONFIDENTIAL~~
7. Cost of expendable supplies furnished to the AEC and its contractors from military stocks.
  8. Cost of all packing, handling, and crating of Armed Forces material and equipment requested by the AEC.
  9. Cost of and operation of all mess halls located ashore at off-continent test sites except such messes the DOD chooses to operate for its own purposes.
  10. Cost of and operation of land transportation facilities at off-continent test sites except such facilities the DOD chooses to operate for its own purposes.
  11. Cost of and operation of a boat pool if required for essential inter-island and ship-to-shore services.
  12. All costs of experimental projects of primary interest to the AEC except where jointly funded by mutual agreement.
  13. Cost of and operation of the Radiological Support function except for those aspects that are required by military procedures to be performed by the DOD.

D. COSTS AND RESPONSIBILITIES TO BE ASSUMED BY THE DEPARTMENT OF DEFENSE IN SUPPORT OF NUCLEAR TEST OPERATIONS

1. Cost of construction of all base facilities at off-continent test sites required by the DOD for other than direct support of AEC test operations.
2. Cost of construction of other facilities at off-continent test sites required by the DOD for support of DOD experimental projects.
3. Cost of all equipment, materials, and supplies furnished by the Armed Forces except the costs of such items when they are purchased at the specific request of the AEC, and except the costs of expendable supplies furnished the AEC or its contractors from military stocks.
4. Costs of transportation for all personnel, equipment, and supplies between the CONUS and the off-continent test sites when moving by military controlled transportation. The AEC will pay charges for the packing, crating, and

~~TOP SECRET~~

handling of items intended for AEC use.

5. Cost of operations of all Armed Forces components assigned to the JTF.
6. Cost of all normal armed forces administration, including pay, subsistence, and travel of all personnel, both civilian and military, employed by the Armed Forces with the exception that the AEC will reimburse the DOD for travel and subsistence of these Armed Forces civilian employees on loan to the AEC and performing functions in its behalf.
7. All costs of experimental projects of primary interest to the Armed Forces except where jointly funded by mutual agreement. As requested by the DOD, construction will be performed by the AEC on a reimbursable basis.
8. Cost of establishment, operation and maintenance of a JTF communications center and all military communications systems including those required for weather reconnaissance, and navigation systems which may be required in support of test operations.
9. Operation of liaison and support aircraft and the costs arising therefrom to satisfy requirements of the military, and AEC and its contractors.
10. Operation of necessary weather reconnaissance, and search and rescue service and the costs arising therefrom.
11. Operation of all boats and ships, except for craft covered by paragraph B4, and the costs arising therefrom required for an operation. However, the AEC shall be responsible for costs arising from the activation and operation of ships required by the AEC solely as platforms for diagnostic instrumentation and for which operational fleet ships are not available.
12. Cost of operation and maintenance of AEC equipment and material which may be loaned to the Armed Forces, and of military equipment; provided that AEC will, upon request and within its capabilities, perform maintenance on such equipment and material on a reimbursable basis.

~~TOP SECRET~~

- ~~CONFIDENTIAL~~
13. Security protection in accordance with jointly developed standards for facilities utilized by the AEC or its contractors.

E. COST REPORTING

1. The Task Force Commander shall specify the programs and projects for which cost data are required.
2. The programs and projects will be clearly defined to permit accurate cost accounting.
3. The cost data to be furnished by the AEC and the participating military agencies of the DOD will be based on uniform principles as agreed upon between the Task Force Commander and the Manager, Albuquerque Operations Office.

F. FUNDING

1. Department of Defense.
  - a. Funding responsibilities will be assigned to the Task Force Commander under such regulations as may be prescribed by the Secretary of Defense.
2. Atomic Energy Commission.
  - a. Funding will be by allocation from AEC appropriations.
  - b. Funding responsibilities will be assigned to the Manager, Albuquerque Operations Office, under regulations prescribed by the General Manager.

G. CHANGES

1. This agreement has been written in the broadest terms possible to provide flexibility for meeting changing conditions. Terms and conditions outlined above, with the exception of matters pertaining to the loan of marine craft covered in Section B4, may be changed at any time by mutual agreement of the Commander, Joint Task Force, on behalf of the Department of Defense, and the Manager, Albuquerque Operations Office, on behalf of the Atomic

~~SECRET~~

Energy Commission. Should they not agree, the question shall be referred to higher authority for decision.

/s/ A. R. Luedecke March 12, 1962 /s/ Gerald W. Johnson March 16, 1962

FOR THE ATOMIC ENERGY COMMISSION: FOR THE DEPARTMENT OF DEFENSE:

~~SECRET~~

---

~~SECRET~~

HEADQUARTERS, TASK GROUP 8.5  
Las Vegas, Nevada  
22 March 1962

Tab 1 (Responsibilities at Christmas Island)  
to Appendix 2 (AEC-DOD Costs and Responsibilities)  
to Annex B (Administration and Logistics)  
to Operation Plan 2-1-62 - TG 8.5

AGREEMENT BETWEEN  
UNITED STATES AND UNITED KINGDOM  
FOR USE OF CHRISTMAS ISLAND  
FOR NUCLEAR TESTING

EXCERPTS

"MEMORANDUM OF UNDERSTANDING COVERING ADMINISTRATIVE, FINANCIAL AND SCIENTIFIC COLLABORATION ARRANGEMENTS FOR THE USE OF CHRISTMAS ISLAND BY THE UNITED STATES GOVERNMENT IN CONNECTION WITH THE PROGRAMME OF NUCLEAR TESTS DISCUSSED BY THE PRESIDENT AND PRIME MINISTER AT BERMUDA DECEMBER, 1961

"Safety of Persons and Property

7.(a) The United States Government will satisfy the United Kingdom Gov't that all necessary measures have been taken to ensure that any tests carried out from Christmas Island under the terms of this Memorandum do not cause injury or damage to persons or property.

(b) No test will be carried out from Christmas Island unless the United Kingdom Government are satisfied -

(i) that the safety precautions which they consider to be necessary for the proposed test have been taken; and

~~SECRET~~

(ii) that the safety conditions are suitable for the proposed test.

(c) A Joint Safety Committee will be established on the Island with suitable United Kingdom representation, including the United Kingdom Base Commander, who will be responsible, on behalf of Her Majesty's Government, for deciding whether the requirements of paragraph 7(b) above have been satisfied in respect of any particular test.

"Control of Access

8.(a) General control of access to Christmas Island will be vested in the United Kingdom Base Commander (to whom the Resident Commissioner has agreed to delegate this responsibility), and will be exercised through Movement Controls, at the port and airfield. Entry permits issued for this purpose will also form the basis for internal safety precautions such as mustering and warning at shot times. They will supersede, for the duration of this Memorandum only, the existing requirement for visas.

(b) Security control of access to United States installations where the protection of United States classified information is involved will be exercised by the United States Task Force Commander.

"Fiscal Exemptions

9.(a) No taxes or Customs duties will be imposed upon the importation or exportation of -

- (i) materials and equipment imported by and for the use of the United States Forces, civil agencies of the United States Government and United States contractors for the purposes of this Memorandum and, if required, certified as such on behalf of the United States Government;
- (ii) the personal effects and household goods imported by United States Forces, members thereof, officials of civil agencies of the United States Government, United States contractors and contractor personnel on first arrival in the Island or within six months thereafter and related thereto.

~~SECRET~~

~~SECRET~~

(b) No excise, consumption or other duty will be levied or charged on any goods or materials purchased locally by or for use of the United States Government for the purposes of this Memorandum.

(c) Where the legal incidence of any form of taxation in the Gilbert and Ellice Islands Colony depends on residence or domicile; periods during which United States Forces, officials of civil agencies of the United States Government, United States contractors or contractor personnel are in the Colony solely by reason of this Memorandum will not be considered as periods of residence (or as creating a change of residence or domicile) for the purposes of such taxation. United States Forces, officials of civil agencies of the United States Government, United States contractors and contractor personnel will be exempt from taxation in the Colony on the salary and emoluments received by them as such and on any tangible moveable property and on the ownership of such property which is in the Colony solely by reason of this Memorandum.

(d) Nothing in this paragraph is intended to prevent taxation of United States Forces, members thereof, officials of civil agencies of the United States Government, United States contractors and contractor personnel with respect to any profitable enterprise other than their employment as such in which they may engage in the Colony: and except as regards salary and emoluments and the tangible moveable property referred to in the preceding sub-paragraph, nothing in this paragraph is intended to prevent taxation to which, even if regarded as resident or domiciled outside the Colony, such persons are liable under the law of the Colony.

(e) United States Government vehicles will be exempted from all fees, taxes and other charges. Each vehicle will carry in addition to its registration number a distinct nationality mark in front and rear. A list of all such vehicles and their registration numbers will be furnished to the Government of the Colony.

(f) The authorities of the United States Forces and of the Colony will collaborate in measures to be taken to prevent abuse of the privileges referred to in this paragraph.

"Allocation of Costs

10.(a) Except as otherwise stated in this Memorandum, the United States Government will bear -

~~SECRET~~

~~SECRET~~

- (i) the full cost of preparing for, providing, operating and maintaining the facilities used in the trials, of taking such precautionary measures as the United Kingdom Government consider necessary, and of any assistance afforded by the United Kingdom Government by agreement with the United States Government.
  - (ii) The costs referred to in paragraph 11(e) below.
- (b)
- (i) It is the intention of the Government of the United Kingdom to provide, at their expense, land agreed to be essential for the purposes covered by this Memorandum; the land to belong to the Government of the Gilbert and Ellice Islands Colony but to be made available for the above purposes for as long as it is agreed to be needed for those purposes. When no longer needed, such land, with any buildings or structures left on it including the proceeds of their sale will be entirely at the disposal of the Government of the Gilbert and Ellice Islands Colony, any reinstatement necessary being carried out at their cost.
  - (ii) If at the request of the Government of the United States, any building or structure is erected or demolished for the purposes covered by this Memorandum, the cost of so doing will be borne by that Government.
  - (iii) At the conclusion of the activities for which this Memorandum provides the United States Government will -
    - (a) if so requested by the United Kingdom Government reinstate into the condition in which they were immediately prior to the commencement of this Memorandum all buildings, structures (including without prejudice to the generality of the phrase, roads, runways and hard standings) and plant which have been made available to or used by the United States Forces or other personnel present for the purposes of this Memorandum; or
    - (b) if so requested by the United Kingdom Government, reimburse to the United Kingdom Government any costs incurred by that Government in such reinstatement; or, in the case of plant, vehicles and

~~SECRET~~

~~SECRET~~

equipment which cannot be economically reinstated, a sum in respect of the depreciation of such plant, vehicles and equipment due to use by or for the United States Forces or other personnel present for the purposes of this Memorandum.

"Claims

11.(a) If any person other than United States military personnel and United States Government civilian personnel shall suffer death, injury or sickness and if any person, corporation, firm or other organization, or colonial administration, shall suffer loss or damage as a result of any of the following -

- (i) ionising radiations from nuclear fuel, radioactive material, nuclear weapons, other nuclear apparatus or components of nuclear weapons or other nuclear apparatus of or consigned to or by the United States Forces or their supporting elements, or from radioactive waste, whether gaseous, liquid or solid, arising from the activities of those forces;
- (ii) an explosion, detonation or malfunctioning of a nuclear weapon, other nuclear apparatus or a component of a nuclear weapon or other nuclear apparatus of or consigned to or by these forces;
- (iii) an occurrence caused wholly or in part, directly or indirectly by (i) or (ii) above;
- (iv) precautions taken against contamination from or against harmful effects, of (i), (ii) or (iii) above,

it is the intention of the Government of the United States that full compensation will be paid to such persons, corporations, firms, or other organizations as are subject to the jurisdiction of the United Kingdom or the Colonial Government, notwithstanding that by reason of any rule of law the United States Government or its forces or civilian component may not be legally responsible, and notwithstanding that the claim arises out of the navigation or operation of a ship, or the loading, carriage or discharge of its cargo; and the cost incurred in satisfying such claims will be borne by the United States Government in accordance with the arrangements set out in subparagraph (e) below.

~~SECRET~~

~~CONFIDENTIAL~~

(b) If any person shall suffer death, injury or sickness, and if any person, corporation, firm or other organization, or colonial administration, shall suffer loss or damage arising out of acts or omissions of members of the United States Forces or other United States personnel who are in the Island for the purposes of this Memorandum done in the performance of official duty, or out of any other act, omission or occurrence for which such Forces or personnel are legally responsible (other than death, injury, sickness, loss or damage covered by sub-paragraph (a) above) full compensation will be paid and the cost incurred in satisfying such claims will be borne by the United States Government.

(c) In particular, the United States Government will pay full compensation for, and meet any costs incurred as a result of -

- (i) losses of copra production in the plantation on Christmas Island: this should be by means of an agreed lump sum payment;
- (ii) deterioration of the plantation while lying idle;
- (iii) repatriation of labour as a result of cessation of operations on the plantation;
- (iv) recruitment of any additional local labour required;
- (v) diversion of shipping from other essential purposes (e.g. reef blasting and copra collection) as a result of the repatriation and recruitment of labour referred to in sub-paragraphs (iii) and (iv) above.

(d) Claims in respect of the matters set out in the preceding sub-paragraphs of this paragraph will be dealt with as follows -

- (i) claims by citizens of the United Kingdom and Colonies, United Kingdom and Colonial corporate bodies, and claims by the administration of any Colony, will be dealt with by the Government of the United Kingdom and the authorities of the United Kingdom will where appropriate pay the amount agreed upon in a settlement, or determined by adjudication in respect of any such claim. These authorities will not be required to attempt to recover any indemnity or contribution from any Government other than that of the United States, or from

~~SECRET~~

any person who may be liable wholly or in part to the claimant. The whole actual amount of such payments will be reimbursed to the Government of the United Kingdom by the Government of the United States.

- (ii) All other claims will be dealt with by the Government of the United States who will settle, or arrange for the determination of, such claims in their discretion. In no circumstances shall any indemnity or contribution be expected from the Government of the United Kingdom, or from the administration of any colony, in respect of any payments so made by the Government of the United States.

(e) Any costs incurred by the Government of the United Kingdom in connection with the reception, transmission to the United States Government, examination or determination of, the claims referred to in this paragraph will be borne by the United States Government; such costs will include any legal costs or expenses arising directly or indirectly out of such matters, whether incurred in the Courts of any State, or in the International Court of Justice, or before any international commission, tribunal or body before which these matters may come, and including further any costs awarded against the Government of the United Kingdom or of any Colony by any such Court, commission, tribunal or body.

"Scientific Collaboration"

12. The Governments of the United States and the United Kingdom, having approved of the general nature and purposes of the nuclear test programme to be carried out from Christmas Island, scientific data arising from this series of tests will be exchanged subject to the terms and conditions of the Agreement between the two Governments for Co-operation on the Uses of Atomic Energy for Mutual Defense Purposes (1958), as amended in 1959, and such other Agreements as may be relevant.

13. As a contribution towards scientific collaboration in the nuclear test programme, the Government of the United Kingdom is prepared to place at the disposal of the Government of the United States such scientific experience and instrumentation techniques, developed during British nuclear testing programmes, as may now be of value in the further United States tests.

~~SECRET~~

~~SECRET~~

14. The machinery for controlling the release and dissemination of information and security procedures, required for and established under the existing Agreement for Co-operation on the Uses of Atomic Energy for Mutual Defense Purposes, will apply to all exchanges, arising from collaboration in the proposed series of United States tests, involving classified nuclear defense information.

"Duration

15.(a) With the exception of the arrangements set out in paragraphs 10 and 11 above, this Memorandum will remain in effect for the period of one year. It may be renewed for such further period as may be agreed between the United Kingdom Government and the United States Government as the result of a joint review instituted at the request of the United States Government. Such a request will be made not later than nine months from the date on which this Memorandum becomes effective.

(b) The arrangements set out in paragraphs 10 and 11 above with respect to reinstatement, depreciation, payment of costs, treatment and payment of claims, will remain effective after this Memorandum ceases to have effect in accordance with sub-paragraph (a) of this paragraph."

~~SECRET~~

~~SECRET~~

HEADQUARTERS, TASK GROUP 8.5  
Las Vegas, Nevada  
22 March 1962

Tab 2 (Interpretation of US-UK Memorandum of Understanding)  
to Appendix 2 (AEC-DOD Costs and Responsibilities)  
to Annex B (Administration and Logistics)  
to Operation Plan 2-1-62 - TG 8.5

1. This Annex provides an interpretation of certain portions of the Memorandum of Understanding for the use of Christmas Island for nuclear testing.

a. Criminal Jurisdiction

Legal review of the document by the Judge Advocate, JTF-8 and conferences with the General Counsel DOD, AEC and the Department of State disclosed the following with respect to criminal jurisdiction over participating U. S. personnel:

- (1) All U. S. nationals, military and civilian, are required to observe local United Kingdom laws and regulations while on the island. The United Kingdom has retained primary jurisdiction over trivial or minor offenses against UK laws by both U.S. military personnel and U. S. civilians on the Island.
- (2) The United Kingdom has waived in advance her claim of criminal jurisdiction over members of the United States Armed Forces on the Island for all offenses except trivial offenses. Members of the U.S. Armed Forces accused of serious offenses against local UK laws will be released to U.S. military authorities for trial by courts-martial or other appropriate disposition.
- (3) AEC, Holmes & Narver and all other U.S. civilian personnel on the island are not subject to the Universal Code of Military Justice or other U.S. military criminal jurisdiction. Therefore the waiver of UK jurisdiction expressed in paragraph (2) above grants no benefit to U.S. civilians. Such civilians remain subject to local UK laws and UK courts for all offenses against local Island law.

~~SECRET~~

- ~~CONFIDENTIAL~~
- (a) An informal understanding with the United Kingdom is being sought whereby local UK authorities will refrain from placing U.S. civilians in confinement or subjecting them to trial in local courts until a prior conference with U.S. authorities has been held.

b. Allocation of Costs

- (1) It is not intended that the specific items requiring reimbursement to the United Kingdom or the amounts concerned need be established at the outset. However, it is necessary that such minimum records be kept as are required to permit equitable determination at a later date of the amounts due the United Kingdom.
- (2) An agreement by the United Kingdom to the following general principles is being requested:
  - (a) There will be no charge for the use by the United States of any buildings, structures, facilities, equipments and supplies available on Christmas Island if these are returned on completion of the Operation in a condition equivalent to that which obtained when U.S. use or acceptance commenced.
  - (b) There will be no charge for normal deterioration of buildings, structures, and long-lived equipments (such as power, sewerage, water lines and plants) which occurs during the period of use, providing a satisfactory degree of maintenance is applied.
  - (c) There will be no charge for deterioration through normal wear and tear of items which the UK has no intention of ever removing from the Island (such as barracks furniture), providing reasonable care is taken in their protection and use.
  - (d) There will be no charge for the use of spare parts that may be available in Island stock for machines and equipment, providing these spare parts are needed to place the machines and equipment in normal operating condition or to

~~SECRET~~

care for normal maintenance of UK plants. There will be a charge for parts that must be procured at the request of the U.S. authorities or replaced by the UK from sources outside the Island, or if they are necessary because of U.S. misuse or accident with the plant concerned.

- (e) The U.S. shall have the right to remove any pipeline, structure, equipment or facility from the Island following the tests which was installed or constructed at U.S. expense, so long as the said removal will not result in serious damage to pre-existing UK buildings, lands or facilities.

c. Safety of Persons and Property

- (1) Radiation background levels will be determined by a U.S. Bio-Environmental program to be established under CJTG 8.5 using USAEC DBM contractors. It is not intended that this program be a joint US-UK effort under the Joint Safety Committee established by paragraph 7 of the basic Memorandum of Understanding.

~~SECRET~~

~~SECRET~~

HEADQUARTERS, TASK GROUP 8.5  
Las Vegas, Nevada  
22 March 1962

Appendix 3 (Command Program Schedule TG 8.5)  
to Annex B (Administration and Logistics)  
to Operation Plan 2-1-62 - TG 8.5

1. Command Program Schedule TG 8.5 will identify all major tasks for which TG 8.5 is responsible in support of Operation DOMINIC.
2. Responsibilities for preparation, maintenance and reporting are provided below:
  - a. Headquarters TG 8.5 (Rear).
    - (1) Review of status reports, necessary revision, correction and submission to higher headquarters.
    - (2) Addition or deletion of items as required.
    - (3) Distribution to agencies of interest.
  - b. TU 8.5.1 (H&N, Los Angeles).
    - (1) Preparation of Master TG 8.5 Command Program Schedule including:
      - (a) Items identified or directed by Hq. JTF-8 and TG 8.5 (Rear).
      - (b) Major items of interest or concern to TG 8.5 including:

(By Separate Location)

Engineering  
Construction  
Logistic Support  
Communications  
Medical  
Personnel  
Reconnaissance  
Important Authorizations

~~SECRET~~

~~CONFIDENTIAL~~

Preparation of Plans  
Establishment of Headquarters or Areas of Work

(2) Locations:

Master Command Central Schedules will be prepared for the following locations:

Home Office, Los Angeles, California  
Long Beach, California  
Oahu (to include):

Honolulu  
Barber's Point  
Hickam Island  
Ford Island  
Other

Canton  
Christmas Island  
French Frigate Shoals  
Hawaii  
Johnston Island  
Kauai  
Malden Island  
Maui  
Palmyra Island  
Raratonga  
Tongareva  
Tongatabu  
Tutuila  
Vita-Levu  
Other Locations of Support Interest to CDR TG 8.5.

(3) Format:

The status report will provide for:

- (a) Identification of the reporting element.
- (b) Level of effort involved.
- (c) Planned beginning and required date (bar chart form).

- (d) Status.
- (e) Remarks or comments to identify progress or problem area.

(4) Reporting Frequency:

- (a) Reports will be provided on a bi-weekly basis.
- (b) Interim teletype reports.
  - (1) Significant change items since last report.
  - (2) Major problem areas.
  - (3) Assistance or authority required.

c. Pacific Operations Branch.

- (1) Report weekly by teletype the following:
  - (a) Major problem areas.
  - (b) Authorizations or assistance required.

d. Distribution of Reports.

Biweekly status reports and weekly teletype reports will be distributed as follows. Number of copies of biweekly reports indicated:

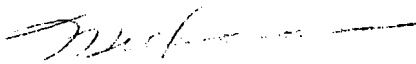
- (1) By TG 8.5.1:
  - (a) CDR TG 8.5 (Rear), Las Vegas. (5 copies)
  - (b) Chief, AEC, Los Angeles Branch. (1 copy)
  - (c) Project Engineer, Pacific Operations Branch, Honolulu, Hq. TG 8.5 (Main). (2 copies)
  - (d) Project Engineer, Johnston Island Section. (1 copy)
  - (e) Project Engineer, Christmas Island Section. (1 copy)
  - (f) JTF-8 (Rear), ATTN: J-4, Washington, D.C. (5 copies)

~~SECRET~~

- (g) Hq. JTF-8, (Ford Island), ATTN: J-4 (5 copies)
  - (h) Johnston Section only, CDR TG 8.6, (2 copies)  
Johnston Island.
  - (i) Christmas Section only, CDR TG 8.7 (2 copies)  
Christmas Island.
- (2) By Project Engineer, Pacific Operations Branch:
- (a) CDR TG 8.5 (Rear), Pacific Operations Branch.
  - (b) Chief, Los Angeles Branch.

JAMES E. REEVES  
COMMANDER TG 8.5

OFFICIAL:



MILLER  
S-3

~~SECRET~~

~~SECRET~~

HEADQUARTERS, TASK GROUP 8.5  
Las Vegas, Nevada  
22 March 1962

Appendix 4 (Arrival Instructions)  
to Annex B (Administration and Logistics)  
to Operation Plan 2-1-62 - TG 8.5

1. Arrival Instructions at Major Job Locations.

Upon arrival in the forward area, personnel will be received into the arrival procedure which includes identification, security briefing, clearance, and baggage inspection for contraband items. After release from the arrival procedure, personnel will normally be met by representatives of their appropriate Task Group for transportation and further processing.

2. Facilities.

a. Lodging.

Assignment of quarters is the responsibility of the H&N Camp Supervisor.

b. Subsistence.

Schedules of Mess Hall hours for each Task Unit will be publicized through bulletins.

c. Other Services and Facilities.

Laundry, Post Exchange, mail, barber, refreshment bars, and religious services, to the extent provided will be detailed in jobsite bulletins and SOP-PACOP.

JAMES E. REEVES  
COMMANDER TG 8.5

OFFICIAL:

MILLER  
S-3

-51-(B-35)-1

~~SECRET~~

~~SECRET~~

HEADQUARTERS, TASK GROUP 8.5  
Las Vegas, Nevada  
22 March 1962

Appendix 5 (Medical Facilities)  
to Annex B (Administration and Logistics)  
to Operation Plan 2-1-62 - TG 8.5

1. Medical Facilities.

- a. H&N (TU 8.5.1) will operate infirmaries at major job locations, manned by at least one doctor, one dentist, and one head nurse. These facilities will be available to all Task Force personnel. At minor job locations, medical services will be limited to first aid facilities.
- b. The capability for medical evacuation by air to Hawaii or some other appropriate hospital will be maintained at each site where airports are available. Evacuation by ship will be used from other sites, if necessary.

2. Location.

- a. Medical facilities of TU 8.5.1 are planned at the following locations:
  - (1) Johnston Island.
  - (2) Christmas Island
- b. TU 8.5.1 will contact physicians in the following areas and announce this information to Project participants.

Costs for medical treatment would be defrayed under established contract provisions of the participating contractor.

~~SECRET~~

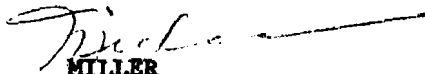
~~SECRET~~

(Contact Arrangements Only)

Kauai Island  
Maui Island  
Hawaii Island  
Oahu Island  
Tutuila Island (American Samoa)

JAMES E. REEVES  
COMMANDER TG 8.5

OFFICIAL:

  
MILLER  
S-3

-53-(B-37)-2

~~SECRET~~

~~SECRET~~

HEADQUARTERS, TASK GROUP 8.5  
Las Vegas, Nevada  
22 March 1962

Annex C (Tentative Schedule of Events) to Operation Plan 2-1-62, TG 8.5

This schedule is included to provide information as to level of effort and time intervals. Frequent changes in device and yield are anticipated.

| <u>Shot</u> | <u>Proposed Code Name</u> | <u>Technical Sponsor</u> | <u>Yield</u> | <u>Date</u> | <u>Type</u>  |
|-------------|---------------------------|--------------------------|--------------|-------------|--------------|
|             | Adobe                     | LASL                     |              | April 23    | Airdrop      |
|             | Aztec                     | LASL                     |              | April 25    | Airdrop      |
|             | Arkansas                  | LRL                      |              | April 27    | Airdrop      |
|             | Rosebud                   | LASL                     |              | April 30    | Airdrop      |
|             | Certification Round       | DOD                      |              | May 1       | Thor Missile |
|             | Yukon                     | LRL                      |              | May 2       | Airdrop      |
|             | Mesilla                   | LASL                     |              | May 4       | Airdrop      |
|             | Intercede                 | DOD                      |              | May 5       | Operational  |
|             | Muskegon                  | LRL                      |              | May 9       | Airdrop      |
|             | Yeso                      | LASL                     |              | May 11      | Airdrop      |
|             | Encino                    | LASL                     |              | May 14      | Airdrop      |
|             | Urraca                    | AEC                      |              | May 15      | Airdrop      |
|             | Swanee                    | LRL                      |              | May 16      | Airdrop      |
|             | Questa                    | LASL                     |              | May 18      | Airdrop      |
|             | Nambe                     | LASL                     |              | May 21      | Airdrop      |
|             | Chetco                    | LRL                      |              | May 23      | Airdrop      |
|             | Swordfish                 | DOD                      |              | May 25      | Underwater   |
|             | Sunset                    | LASL                     |              | May 28      | Airdrop      |
|             | Tanana                    | LRL                      |              | May 30      | Airdrop      |
|             | Bluegill                  | DOD                      |              | June 1      | Thor Missile |
|             | Angel Fire                | DOD                      |              | June 4      | Operational  |
|             | Otowi                     | LASL                     |              | June 11     | Airdrop      |
|             | Petit                     | LRL                      |              | June 13     | Airdrop      |
|             | Starfish                  | DOD                      |              | June 15     | Thor Missile |
|             | Bighorn                   | LRL                      |              | June 20     | Airdrop      |
|             | Truckee                   | LRL                      |              | June 27     | Airdrop      |
|             | Calaveras                 | LRL                      |              | July 4      | Airdrop      |

JAMES E. REEVES  
COMMANDER TG 8.5

OFFICIAL:

MILLER  
S-3

-54-(C-1)

~~SECRET~~

~~SECRET~~

HEADQUARTERS, TASK GROUP 8.5  
Las Vegas, Nevada  
22 March 1962

Annex D (Security Plan) to Operation Plan 2-1-62, TG 8.5

1. General.

Access to certain areas used in conjunction with the conduct of tests will be controlled and governed by JTF-8 Security Regulations. Such areas will include (during the operational phase):

- a. Johnston and Christmas Islands extending three (3) miles to the sea.
- b. Danger areas during shot periods.
- c. Areas in Hawaii by Hq JTF-8.
- d. Other islands extending three (3) miles to the sea used for operations revealing classified information.

2. Personnel Clearances.

- a. AEC Civilian employees - "Q".
- b. Civilian employees of AEC contractors:
  - (1) For operational needs including communication centers - "Q".
  - (2) Employees of TU 8.5.1, except where "Good Security Risk" (GSR) authorization is obtained, - "I".
  - (3) Employees of TU 8.5.2 - Interim Secret (minimum).
  - (4) Employees of TU 8.5.3 - Interim Secret (minimum).
  - (5) On and after a "cut-off" date to be announced by CJTF-8, GSR authorizations in operational areas will be cancelled.

~~SECRET~~

~~TOP SECRET~~

3. Access to Restricted Data.

For AEC employees and AEC contractor personnel access to restricted data will be on the basis of AEC clearances as follows:

- a. Top Secret - "Q", plus certification for Top Secret by the Security Division, NOO.
- b. Secret - "Q".
- c. Confidential - "L".

4. Classification.

Classification of documents is the responsibility of the originator. However, advice and assistance may be obtained from Chief S-2 Section or from Security Officer, Honolulu Section. If further guidance is necessary, such guidance will be obtained through supervisory channels from the Classification Officer, JTF 8.

5. Security Infractions and Violations.

Security infractions and violations for participants of TG 8.5 will be reported promptly through supervisory channels to the CTG 8.5. The Security Officer, Honolulu Section and S-2, TG 8.5 will assist the CTG 8.5 in determining responsibility, corrective action, and reporting the matter to J2, Hq. JTF-8.

6. Security Indoctrination.

All personnel will be indoctrinated on importance of security to Operation DOMINIC. Guidance will be provided by Hq. JTF-8.

7. Responsibilities.

- a. Hq. TG 8.5 (Rear)
  - (1) Provide basic requirements for security program.
  - (2) Prepare and distribute security programs measures to be taken by Hq. TG 8.5 advance and jobsite.
  - (3) Provide classification assistance to TG 8.5.

~~TOP SECRET~~

~~SECRET~~

- (4) Assist JTF-8 in planning for and procuring badge system.
- (5) Coordinate with 8.5 elements and 8.1 TU's approved classified document channels for those organizations at forward area locations.

b. Hq. TG 8.5 (Pacific Operations Branch)

- (1) Provide for badge systems at locations specified by Hq. JTF-8 and CTG 8.5.
  - (a) Details of JTF-8 badge system are set forth in JTF-8 Circular 2-2, dated 1 Feb 62, however, some general principles of the system are:

Badges are color coded to denote clearance.

A total of 14 security area designators are provided for on these badges. Identification of security areas by locations and assigned number has been disseminated by CJTF-8 in several TWX's to all command elements.

All badges will be prepared at the JTF-8 badge office in the MATS terminal bldg., Hickam AFB.

Badges as prepared may be released in bulk to command elements of JTF-8 for distribution within such organizations.

- (2) Provide for security of areas at forward locations thereby:

TU 8.5.1 provide civilian guards for those AEC and contractor areas not secured by forces of Hq. JTF-8.

- (3) Insure implementation of directives concerning control of prohibited items.
- (4) Prepare and coordinate instructions regarding arrival of personnel and detection of security violations, prohibited items and inspections to insure safeguarding of classified matter.

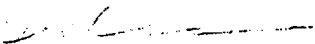
~~SECRET~~

~~SECRET~~

- (5) Provide assistance in interpreting classification guides.
- (6) Maintain central files of clearances of AEC and contractor personnel in forward areas.
- (7) Assume custody of test devices at forward areas (including Oahu) while access thereto is required by TU's 8.1.1, 8.1.2 or 8.1.4.
- (8) Provide SS accountability function for CJTF-8.

JAMES E. REEVES  
COMMANDER TG 8.5

OFFICIAL:

  
MILLER  
S-3

~~SECRET~~

~~SECRET~~

HEADQUARTERS, TASK GROUP 8.5  
Las Vegas, Nevada  
22 March 1962

Annex E (Support to Meteorological and Radiological Safety Operations)  
To Operations Plan 2-1-62, TG 8.5

1. Support to Meteorological Operations.

Based upon directives from Hq. JTF-8 and TG 8.5, the TU 8.5.1 is responsible for:

- a. Constructing, rehabilitating, equipping, supporting and maintaining weather observer units at:
    - (1) Palmyra Island.
    - (2) Christmas Island.
    - (3) Johnston Island.
    - (4) Malden Island.
    - (5) Tutuila, American Samoa.
    - (6) Canton Island.
  - b. Providing necessary office space for use as Base Weather Station and as Staff Weather Unit/Hazards Evaluation Unit at Johnston Island.
  - c. Providing necessary office space for use as JTF-8 Weather Central, Base Weather Station, and Staff Weather Unit/Hazards Evaluation Unit at Christmas Island.
  - d. Providing necessary housekeeping services for weather personnel at above locations.
2. The Pacific Operations Branch TG 8.5 is responsible for insuring that design and construction of facilities conform to standards and requirements of Hq. JTF-8.

3. Radiological Safety Operations.

The Industrial and Radiological Safety Advisor, TG 8.5, is responsible for planning and supervising radiological safety of all personnel of TG 8.5. Detailed responsibilities include:

~~SECRET~~

~~SECRET~~

- a. Preparing in collaboration with Hq. JTF-8 and TU 8.5.1 the TG 8.5 radiological safety plan for approval by CTG 8.5.
- b. Providing, in collaboration with TU 8.5.1, radiological safety services for TG 8.5 operations in contaminated areas.
- c. Providing radiological safety support to Hq. JTF-8 including radiological safety equipment.
- d. Assuring compliance, by TG 8.5 personnel, of standards, exposures and procedures approved and/or directed by CTG 8.5.
- e. Reporting radiological incidents in accordance with AEC and Hq. JTF-8 directives.

JAMES E. REEVES  
COMMANDER TG 8.5

OFFICIAL

MILLER  
S-3

~~SECRET~~

~~SECRET~~

HEADQUARTERS, TASK GROUP 8.5  
Las Vegas, Nevada  
22 March 1962

Annex F (Natural Disaster, Emergency Routine Evacuation and Re-Entry Plan) To Operations Plan 2-1-62, TG 8.5

1. This Annex provides basic responsibilities for the development and coordination of plans and procedures for the preservation of life and property in implementing Annex L, Operations Plan 2-62, Hq. JTF-8, same subject. Definitions are contained in the reference Operations Plan.
2. Responsibilities.
  - a. Dep CDR TG 8.5.
    - (1) Participates as a continuing member of the Evacuation Planning Committee.
    - (2) Acts as Evacuation Officer TG 8.5.
    - (3) Reviews and approves for the CDR the TG 8.5 muster and evacuation plans, assuring positive coordination with TU's, TG's and Hq. JTF-8.
  - b. Project Engineer (AEC), Pacific Operations Branch.
    - (1) Assumes responsibilities of Dep CDR in his absence or at specified locations.
  - c. TU 8.5.1 (H&N)
    - (1) Prepares detailed plans to cover emergency and precautionary evacuation and re-entry of TG 8.5 personnel and material including:
      - (a) Arrange for movement of all patients to embarkation points to type lifts recommended by medical officers.
      - (b) Evacuate designated personnel and items of equipment.
      - (c) Secure small craft which may be assigned to TG 8.5.

~~SECRET~~

- (2) Maintain capability for emergency evacuation of personnel and equipment.
- (3) Consolidate TG 8.5 reports and personnel accounting procedures, reporting through Dep CDR TG 8.5.
- (4) Conduct musters of all TG 8.5 personnel when directed.
- (5) Prepare necessary passenger lists and tables of equipment as required.

JAMES E. REEVES  
COMMANDER TG 8.5

OFFICIAL

*Miller*  
MILLER  
S-3

~~SECRET~~

~~SECRET~~

HEADQUARTERS, TASK GROUP 8.5  
Las Vegas, Nevada  
22 March 1962

Annex G (Task Organization, JTF-8) to Operations Plan 2-1-62, TG 8.5

Task Organization

|  |                                 |
|--|---------------------------------|
| Hq. JTF-8  | Maj. Gen. Alfred D. Starbird    |
| DEP CDR SCI  | Dr. William E. Ogle             |
| DEP CDR NAVY   | RADM Lloyd M. Mustin, USN       |
| DEP CDR AF   | Brig. Gen. John S. Samuel, USAF |
| TU 8.1.1 (LASL)  | Dr. R. L. Arnodt                |
| TU 8.1.2 (LRL)   | Dr. Robert Goeckermann          |
| TU 8.1.3 (DASA)  | Col. Leo B. Kiley, USAF         |
| TU 8.1.4 (SC)  | Mr. Don B. Shuster              |
| TU 8.1.5 (SSD)   | Col. E. A. Meyer Jr., USAF      |
| (Space Systems Division,<br>Air Forces System Command) |                                 |
| TU 8.1.6 (EG&G)  | Mr. Frank Strabala              |
| TG 8.3 (NAVY)  | RADM Lloyd M. Mustin, USN       |
| TG 8.4 (AF)  | Brig. Gen. John S. Samuel, USAF |
| TG 8.5 (SUPPORT)                                       | Mr. James E. Reeves, AEC        |
| TU 8.5.1 (H&N)   | Edwin G. Bowen                  |
| TU 8.5.2 (SCRIPPS)                                     | Dr. William Van Dorn            |
| TG 8.6 (BASE COMMAND) (Johnston Is.)                   | Brig. Gen. Eugene A. Salet, USA |
| TG 8.7 (BASE COMMAND) (Christmas Is.)                  | Col. Phillip L. Hooper, USA     |

JAMES E. REEVES  
COMMANDER TG 8.5

OFFICIAL:

*J. Miller*  
MILLER  
S-3

~~SECRET~~

~~SECRET~~

HEADQUARTERS, TASK GROUP 8.5  
Las Vegas, Nevada  
22 March 1962

Annex H (Communications) to Operations Plan 2-1-62, TG 8.5

1. General.

Communications services and facilities will be provided through joint facilities wherever possible. Maximum security protection will be provided all communication-electronics facilities except that provision will be made to provide facilities for rapid conversion to provide for unsecured channels to handle unclassified matters after public announcement.

2. Responsibility.

- a. CTG 8.5 is responsible for providing ashore communications and scientific electronics facilities to support AEC and AEC contractors.
- b. CTG 8.5 will consolidate all long-haul communication requirements of TG 8.5 and AEC Task Units and coordinate, as appropriate, with JTF-8 to arrange for engineering, procurement and installation of required communications services.
- c. CTG 8.5 will consolidate and coordinate radio-frequency requirements with JTF-8.

3. Crypto-Teletype Facilities.

The crypto-teletype network being activated to support Operation DOMINIC is shown in Appendix 1.

~~SECRET~~

~~SECRET~~

4. Procedures.

All TG 8.5 communications centers in the Pacific Area are authorized to accept messages for transmission in any legible form. Designation of release authority and the requirement for release authority is the responsibility of Task Unit Commanders.

Three (3) copies of incoming messages will be delivered to the appropriate Task Unit Mail & Records Section by the TG 8.5 Comcenter.

5. Telephone Facilities.

Long-haul, unsecured telephone service is shown in Appendix 2 and secured, long-haul voice circuits are shown in Appendix 3.

TU 8.5.1 is responsible and will arrange for the installation of all local telephone service upon receipt of requirements.

6. Mobile Radio Services.

Mobile radio networks will be established by TU 8.5.1 to satisfy the requirements of scientific task units. Installation and maintenance will either be performed by TU 8.5.1 or will arrange with local telephone company as appropriate.

7. Voice Count Down System.

- a. CTG 8.5 will establish on Johnston Island a major SSB voice count down facility to cover a radius of 4,500 miles. A facility will be provided at Christmas to provide long range voice count down.
- b. Input signal will be provided by TU 8.1.6.
- c. CTG 8.5 will provide SSB receivers to all Task Units requiring same, upon receipt of requirements. Requirements should be addressed to TU 8.5.1 for action with info to CTG 8.5, Las Vegas, Nevada.

~~SECRET~~

~~SECRET~~

- d. TU 8.5.1 will design, install and maintain or arrange for a transmit capability on the long range voice count-down system at Kauai and Pt. Arguello. (Appendix 4).

JAMES E. REEVES  
COMMANDER TG 8.5

OFFICIAL:

*[Signature]*  
MILLER  
S3

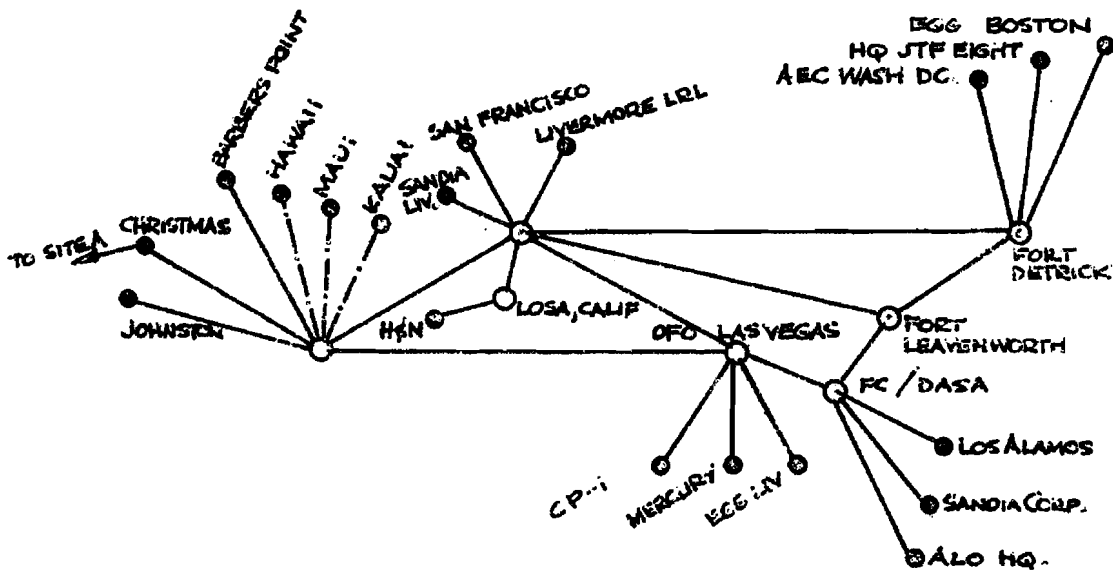
-66-(H-3)

~~SECRET~~

~~SECRET~~

Appendix 1  
to Annex H (Communications)  
to Operations Plan 2-1-62, TG 8.5

CRYPTO TELETYPE NETWORK  
OPERATION DOMINIC



LEGEND :

ON LINE KW-9 OR KW-26 CRYPTO ———  
OFF LINE KL-7 CRYPTO - - - - -

- ⊙ AUTOMATIC RELAY CENTERS.
- TORN TAPE RELAY CENTERS.
- TERMINAL COMCENTERS

NOTE : IF ALL OR PART OF BLUESTRAW IS SHIFTED TO CHRISTMAS, CLASSIFIED CRYPTO WILL BE REQUIRED

APPENDIX 1

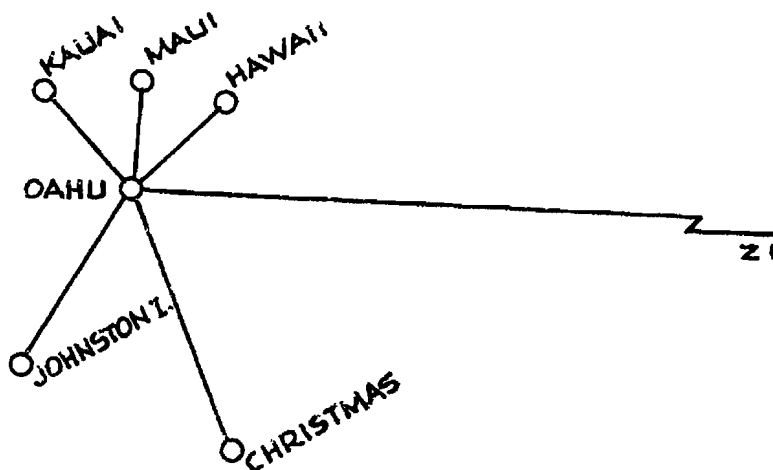
~~SECRET~~

~~SECRET~~

Appendix 2  
to Annex H (Communications)  
to Ops Plan 2-1-62, TG 8.5

TELEPHONE CHANNELS  
UNCLASSIFIED VOICE

OPERATION DOMINIC



APPENDIX 2

-68-(H-5)-1

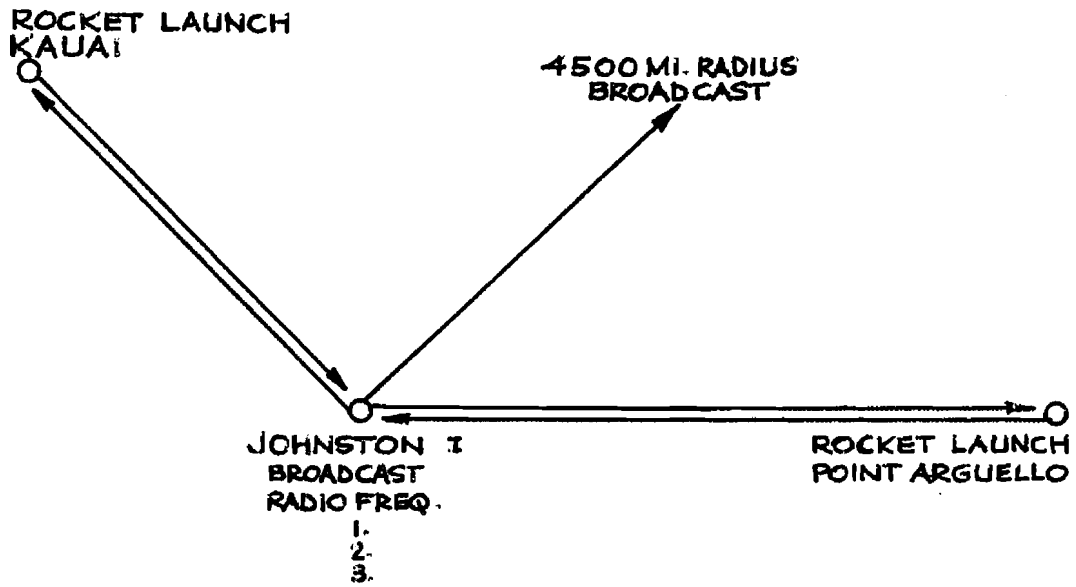
~~SECRET~~

~~SECRET~~

Appendix 4  
to Annex H (Communications)  
to Operations Plan 2-1-62, TG 8.5

LONG RANGE VOICE COUNT DOWN

# FISH BOWL



APPENDIX 4

~~SECRET~~

**SECRET**

HEADQUARTERS, TASK GROUP 3.5  
Las Vegas, Nevada  
22 March 1962

Annex I (Table of ADX Experimental Projects - Tentative)  
to Operation Plan 2-1-62 - TG 3.5

FISCAL RESPONSIBILITY

| <u>PROGRAM<br/>PROJECT</u> | <u>PROJECT<br/>TITLE</u>   | <u>AGENCY</u> | <u>PROJECT<br/>OFFICER</u>                                     | <u>AGENCY<br/>CODE</u> | <u>SUPPORT<br/>CODE</u> |
|----------------------------|--|---------------|--|------------------------|-------------------------|
| <u>Program 10</u>          | <u>Optical Phenomenology<br/>&amp; Diagnostics</u>                     | IASL          | H. Boertlin (Prog. Dir.)<br>D. Westervelt (Alt.<br>Prog. Dir.) | IASL Internal          | MCC                     |
| (TG 3.1.1) (IASL)          |  |               |  |                        |                         |
| <u>Project 10.1</u>        | <u>Optical Phenomenology<br/>&amp; Diagnostics (Ternstrom<br/>Is.)</u> | IASL          | E. Bennett   | IASL Internal          | MCC                     |
| <u>Project 10.2</u>        | <u>Optical Phenomenology<br/>&amp; Diagnostics (Hunt)</u>              | IASL          | D. Steinhilber   | IASL Internal          | MCC                     |
| <u>Project 10.3</u>        | <u>Optical Phenomenology<br/>&amp; Diagnostics (Airborne)</u>          | IASL          | S. Kiehn   | IASL Internal          | MCC                     |

**SECRET**

~~SECRET~~

| PROGRAM PROJECT   | PROJECT TITLE  | AGENCY | PROJECT OFFICER              | FISCAL RESPONSIBILITY |              |
|-------------------|--|--------|------------------------------|-----------------------|--------------|
|                   |  |        |                              | AGENCY COST           | SUPPORT COST |
| Project 10.4      | Telemetered Alpha  | IASI   | J. McGuire                   | IASI Internal         | NOO          |
| <u>Program 11</u> | Radio Chemistry  | IASI   | G. Gosman                    | IASI Internal         | NOO          |
| Project 11.1      | Radiochemical Diagnostics                                  | IASI   | G. Browne                    | IASI Internal         | NOO          |
| Project 11.2      | Aircraft Sampling  | IASI   | Paul Guthals, P. Moore, Alt. | IASI Internal         | NOO          |
| <u>Program 15</u> | Hydrodynamic Yield   | IASI   | Arthur Cox                   | IASI Internal         | NOO          |
| <u>Program 16</u> | Electromagnetic & Air Fluorescence Measurements            | IASI   | Bob Watts                    | IASI Internal         | NOO          |
| Project 16.1      | Electromagnetic & Air Fluorescence Measurements - Airborne | IASI   | Richard Wakefield            | IASI Internal         | NOO          |
| Project 16.2      | Electromagnetic & Air Fluorescence Measurements - Land     | IASI   | Karl Theobald                | IASI Internal         | NOO          |
| Project 16.3      | Special Measurements                                       | IASI   | George Challinor             | IASI Internal         | NOO          |

~~SECRET~~

| <u>PROGRAM</u>    | <u>PROJECT</u> | <u>PROJECT TITLE</u>                      | <u>AGENCY</u> | <u>PROJECT OFFICER</u>      | <u>AGENCY COST</u> | <u>SUPPORT COST</u> |
|-------------------|----------------|---|---------------|-----------------------------|--------------------|---------------------|
| <u>Program 18</u> |                | <u>Rocketborne Diagnostics</u>            | IASI          | James Coon<br>H. Argo, Alt. | IASI Internal      | MOO                 |
| Project 18.1      |                | Rocketborne Diagnostics-Avalanche         | IASI          | James Coon<br>H. Argo, Alt. | IASI Internal      | MOO                 |
| Project 18.2      |                | Rocketborne Diagnostics-Pt. Arguello      | IASI          | Sidney Singer               | IASI Internal      | MOO                 |
| <u>Program 21</u> |                | <u>Radio Chemistry</u>                    | IRL           | E. Fleming                  | IRL Internal       | MOO                 |
| Project 21.1      |                | Rocket Sampling                           | IRL           | E. Fleming                  | IRL Internal       | MOO                 |
| Project 21.2      |                | Aircraft Sampling                         | IRL           | E. Fleming                  | IRL Internal       | MOO                 |
| <u>Program 22</u> |                | <u>Aircraft Diagnostics</u>               | IRL           | P. Compton                  | IRL Internal       | MOO                 |
| <u>Program 23</u> |                | <u>Sensor Diagnostics</u>                 | IRL           | A. Torgensen                | IRL Internal       | MOO                 |
| <u>Program 24</u> |                | <u>Signal Altitude Systems (Johnston)</u> | IRL           | F. Seward                   | IRL Internal       | MOO                 |
| Project 24.1      |                | Physics Measurements                      | IRL           | F. Seward                   | IRL Internal       | MOO                 |
| Project 24.2      |                | High Altitude Radio Chemistry             | IRL           | P. Stevenson                | IRL Internal       | MOO                 |
| <u>Program 27</u> |                | <u>Vulnerability Studies</u>              | IRL           | R. L. Steele                | IRL Internal       | MOO                 |
| Project 27.1      |                | Effects Measurements (MD 8.1.3) (DASA)    | IRL           | R. L. Steele                | IRL Internal       | MOO                 |

~~SECRET~~

~~SECRET~~

FISCAL RESPONSIBILITY

| <u>PROGRAM PROJECT</u> | <u>PROJECT TITLE</u>  | <u>AGENCY</u> | <u>PROJECT OFFICER</u> | <u>AGENCY COST</u> | <u>SUPPORT COST</u> |
|------------------------|---|---------------|------------------------|--------------------|---------------------|
| Project 1.1            | High Altitude Air Blast Measurements (Johnston Is.)   | ERL           | R. Wise                | FC/DASA            | DOD                 |
| Project 1.2            | Data Analysis (Etikan)  | MITL          | P. Bendon              | FC/DASA            | DOD                 |
| Project 2.1            | External Neutron Flux Measurements (Johnston Is.)   | MITL          | J. Kinch               | FC/DASA            | DOD                 |
| Project 2.2            | Gamma Radiation Measurements (Johnston Is.)   | MITL          | J. Kinca               | FC/DASA            | DOD                 |
| Project 6.1a           | Radar Propagation (Johnston Is. & 4 ships)  | USASSA        | G. Roberts             | FC/DASA            | DOD                 |
| Project 6.1c           | Radar Propagation   | AFSNC         | Lt. J. Garcia          | FC/DASA            | DOD                 |
| Project 6.2            | Rocket-borne Gamma Scanning (Johnston Is.)  | ERL           | N. Berning             | FC/DASA            | DOD                 |
| Project 6.3            | D-Region Physical Chemistry (Johnston Is.)  | ERL           | V. Berning             | FC/DASA            | DOD                 |
| Project 6.4            | E-F Region Physical (Johnston Is.)  | ERL           | Lt. Col. De Giacomo    | FC/DASA            | DOD                 |
| Project 6.5a           | Ionospheric Scanning & Magnetic Measurement (Hawaii, Palmyra, Midway, Samoa, Canton, Philippines, Wake, Kiri, Adak) | ERL           | Dr. P. Newman          | FC/DASA            | DOD                 |

~~SECRET~~

~~SECRET~~

| <u>PROGRAM<br/>PROJECT</u> | <u>PROJECT TITLE</u>   | <u>AGENCY</u>          | <u>PROJECT<br/>OFFICER</u> | <u>FISCAL RESPONSIBILITY</u> |                         |
|----------------------------|--|------------------------|----------------------------|------------------------------|-------------------------|
|                            |  |                        |                            | <u>AGENCY<br/>COST</u>       | <u>SUPPORT<br/>COST</u> |
| Project 6.5b               | Ionospheric Sounding &<br>Magnetic Measurement<br>(Tongatabu, Tuituila,<br>Am. Samoa)                  | ARF                    | Dr. C. Stone               | FC/DASA                      | DOD                     |
| Project 6.5c               | Ionospheric Sounding &<br>Magnetic Measurement<br>(Tutuila, Canton, Maui,<br>Tutuila)                  | NBS                    | W. Utlaut                  | FC/DASA                      | DOD                     |
| Project 6.5d               | Ionospheric Sounding &<br>Magnetic Measurement   | RPA                    | R. Silberstein             | FC/DASA                      | DOD                     |
| Project 6.5e               | Hydromagnetic Waves<br>(Is. of Hawaii)   | Army Sig-<br>nal ASRDL | Hans Bomke                 | FC/DASA                      | DOD                     |
| Project 6.6                | Debris Tracking by Surface<br>Resonant Scathing<br>(Johnston Is.) (Ship S-2 &<br>4 FF Tanga, Tuituila) | CRL                    | Dr. E. R. Muring           | FC/DASA                      | DOD                     |
| Project 6.7                | Debris Expansion Experi-<br>ment (F. F. Shoal,<br>Canton, Tongatabu)                                   | AFSWC                  | Lt. N. Whitaker            | FC/DASA                      | DOD                     |

-74-(1-5)

~~SECRET~~

~~SECRET~~

FISCAL RESPONSIBILITY

| <u>PROGRAM PROJECT</u> | <u>PROJECT TITLE</u>  | <u>AGENCY</u> | <u>PROJECT OFFICER</u> | <u>AGENCY COST</u> | <u>SUPPORT COST</u> |
|------------------------|---|---------------|------------------------|--------------------|---------------------|
| Project 5.8            | Rimeters (Oahu, T. F. Shoel, Valmyra, Midway, Wake, Rival, Abanile, Tongatabu, Nukunua) | ORNL          | S. Borovitz            | FC/DASA            | DDO                 |
| Project 5.9            | Radar Clutter & Physics Experiment (Abanile, DIMP Ship - ANU Aircraft)(30-121 J. I.)    | SRI           | Mr. Ledstrand          | FC/DASA            | DDO                 |
| Project 5.10           | Ionospheric Observatory (Fiji or Samoa, Kikiam)   | GRI           | Mr. Whidden            | FC/DASA            | DDO                 |
| Project 5.11           | HF Comm. Experiment (Kamali, Wake, Midway Oahuwa, Gualacanal, Maui)                     | SRIL          | Mr. Kites              | FC/DASA            | DDO                 |
| Project 6.12           | Playgy Back Satellite (Fandenburg thru reg. tracking station)                           | GRI           | Capt. R. Bena          | FC/DASA            | DDO                 |
| Project 6.13           | DAMP Solid Participation  | FC/DASA       | Mr. Rager-Stratton     | FC/DASA            | DDO                 |
| Project 6a.1           | Infrared Measurement (Johnston Is.)   | GRI           | Mr. Gaurin             | FC/DASA            | DDO                 |

~~SECRET~~

~~SECRET~~

FISCAL RESPONSIBILITY

| <u>PROGRAM<br/>PROJECT</u> | <u>PROJECT TITLE</u>   | <u>AGENCY</u> | <u>PROJECT<br/>OFFICER</u> | <u>AGENCY<br/>COST</u> | <u>SUPPORT<br/>COST</u> |
|----------------------------|--|---------------|----------------------------|------------------------|-------------------------|
| Project 8A.2               | Optical Measurement<br>(Johnston Island 2/rc)  | EG&G          | D. Hansen                  | FC/DASA thru<br>NOO    | DOD                     |
| Project 8A.3               | Structural Response<br>to Thermal Radiation<br>from High Altitude<br>Fireball (Johnston Is.) | ASD           | Mr. Gray<br>Dr. Annis      | FC/DASA                | DOD                     |
| Project 8B                 | Thermal Radiation &<br>Effects (Johnston Is.)  | AFSWC         | Capt. Gillespie            | FC/DASA                | DOD                     |
| Project 9.1                | Atmospheric Parameter<br>Profile (Johnston Is.)  | CRL           | Dr. K. Champion            | FC/DASA                | DOD                     |
| Project 9.2                | Ship Modifications<br>(Pearl Harbor)   | FC/DASA       | Lt. R. N.<br>Eagebreth     | FC/DASA                | DOD                     |
| Project 9.3                | Aircraft Modifications   | CRL           | Capt. Reed                 | FC/DASA                | DOD                     |
| Project 9.4                | Thor Missile System<br>(Johnston Is.)  | SSD           | Col. E. Meyer              | FC/DASA                | DOD                     |
| Project 9.5a               | Documentary Photo  | IMAFS         | Maj. MacKinnon             | FC/DASA                | DOD                     |
| Project 9.5b               | Timing & Firing<br>(Johnston Is.)  | EG&G          | Mr. Champeaux              | FC/DASA thru<br>NOO    | DOD                     |
| Project 9.5c               | Weapons Reports<br>(Johnston Is.)  | FC/DASA       | Mr. C. W.<br>Isselhardt    | FC/DASA                | DOD                     |

-76-(1-7)

~~SECRET~~

~~SECRET~~

| PROGRAM<br>PROJECT        | PROJECT TITLE                                  | AGENCY | PROJECT OFFICER              | FISCAL RESPONSIBILITY |            |
|---------------------------|--|--------|------------------------------|-----------------------|------------|
|                           |  |        |                              | AGENCY COST           | SOP-COST   |
| Project 9.5d              | Data Analysis                                  | OSBO   | Mr. L. Eanser                | IC/OSBA<br>MCC        | WFO<br>DCC |
| Project 9.6               | Tracking Rockets<br>(Johnston Is.)             | Orbita | Mr. J. Thompson<br>Mr. Tweed | IC/OSBA<br>MCC        | WFO<br>DCC |
| (MC 8.1.4) (Sandia Corp.) |  |        |                              |                       |            |
| <u>Program 31</u>         |  |        |                              | R. S. MILLER          |            |
| Project 31.1              | 37 Instrumentation                             | S/C    | R. I. Petersen               | ALO                   | KCO        |
| Project 31.2              | Directing Equipment                            | S/C    | A. S. Butere                 | ALO                   | MCO        |
| Project 31.3              | Slaved Mounts                                  | S/C    | D. Parsons                   | ALO                   | MCO        |
| Project 31.4              | Ballon Systems                                 | S/C    | E. G. Larson                 | ALO                   | MCO        |
| <u>Program 32</u>         |  |        |                              | N. L. Krenn           |            |
| Project 32.1              | Instrumentation<br>(Kauai--Johnston)           | S/C    | V. K. Sefta                  | ALO                   | MCO        |
| Project 32.2              | Instrumentation (Rockets)<br>(Kauai--Johnston) | S/C    | K. F. Croviter               | ALO                   | XCO        |
| Project 32.3              | Safety Fuzing & Firing<br>(Johnston Is.)       | S/C    | J. N. Demantrolin            | ALO                   | MCO        |

~~SECRET~~

~~SECRET~~

| <u>PROGRAM</u><br><u>PROJECT</u> | <u>PROJECT TITLE</u>                          | <u>AGENCY</u> | <u>PROJECT OFFICER</u> | <u>FISCAL RESPONSIBILITY</u> |                     |
|----------------------------------|---|---------------|------------------------|------------------------------|---------------------|
|                                  |   |               |                        | <u>AGENT COST</u>            | <u>SUPPORT COST</u> |
| Project 32.4                     | Payload (Johnston Is.)                        | S/C           | B. L. Barley           | ALO                          | ROO                 |
| Project 32.5                     | Rocket's Telemetry                            | S/C           | J. J. Waller           | ALO                          | ROO                 |
| Project 32.6                     | Sampling, Meteorology, Photography & Recovery | S/C           | R. L. Egan             | ALO                          | ROO                 |
| <u>Program 33</u>                |   |               | L. E. Hollingsworth    |                              |                     |
| Project 33.1                     | Mechanical Assembly (Barbers Point)           | S/C           | V. Brown               | ALO                          | ROO                 |
| Project 33.2                     | Tuning and Firing                             | S/C           | V. Beagland            | ALO                          | ROO                 |
| Project 33.3                     | Instrumentation Checkout (Barbers Point)      | S/C           | B. Bay                 | ALO                          | ROO                 |
| <u>Program 40</u>                |   |               | (TU 8.1.5) (ESAG)      |                              |                     |
| Project 40.1                     | Tuning and Firing (Christmas)                 | ROAG          | Frank Strabala         | ROO                          | ROO                 |
| Project 40.2                     | Technical Photo (Fire Ball) (Christmas)       | ROAG          | Frank Strabala         | ROO                          | ROO                 |
| Project 40.3                     | Technical Photo (Fire Ball) (Christmas)       | ROAG          | Frank Strabala         | ROO                          | ROO                 |

~~SECRET~~

~~SECRET~~

FISCAL RESPONSIBILITY

| <u>PROGRAM PROJECT</u>                           | <u>PROJECT TYPE</u>                               | <u>AGENCY</u> | <u>PROJECT OFFICER</u> | <u>AGENCY COST</u> | <u>SUPPORT COST</u> |
|--|---|---------------|------------------------|--------------------|---------------------|
| Project 42.1                                     | Technical Photo (Fire Bell) (Johnston Is.)        | BSAG          | Frank Strabala         | PC/DNSA 4000       | DDO                 |
| Project 42.2                                     | Technical Photo (Fire Bell) (Nauri)               | BSAG          | Frank Strabala         | FOO                | DDO                 |
| Project 42.3                                     | Technical Photo (Turbina)                         | BSAG          | Frank Strabala         | FOO                | DDO                 |
| Project 42.1                                     | Tuning & Firing (Rocket) (Multiple Location)      | ESAG          | Frank Strabala         | FOO                | DDO                 |
| Project 43.1                                     | Data Analysis (Multiple Location)                 | ESAG          | Frank Strabala         | FOO                | DDO                 |
| Project 44.1                                     | Alpha Measurements (Multiple Location)            | 3FAG          | Frank Strabala         | FOO                | DDO                 |
| (TU 8.5.2) (Scripts Institution of Oceanography) |   |               |                        |                    |                     |
| <u>Program 50</u>                                |   |               |                        |                    |                     |
| Project 50.1                                     | Rare Measurements and Studies (Multiple Location) | SCRIPPS       | Van Dorn               | ADD                | ADD                 |

NOTE

TU 8.5 support for JTF 8 Christmas, Johnston and remote islands, see Appendix 2, Annex B, Operations Plan TU 8.5 as revised. (ADD - DOD agreement)

~~SECRET~~

~~SECRET~~  
HEADQUARTERS, TASK GROUP 8.5  
Las Vegas, Nevada  
22 March 1962

Annex J (Standard Distribution List) to Operation Plan 2-1-62,  
TG 8.5

| <u>Addressees</u>  | <u>No. of Copies</u> |
|--|----------------------|
| <u>AEC Agencies</u>  |                      |
| Director, Division of Military Application                 | 2 (1&2/100 A)        |
| Manager, ALO   | 2 (3&4/100 A)        |
| Manager, SAN   | 1 (5/100 A)          |
| Assistant Manager for Operations, NOO                      | 1 (6/100 A)          |
| Assistant Manager for Engineering and<br>Construction, NOO | 1 (7/100 A)          |
| Assistant Manager for Pacific Operations, NOO              | 1 (8/100 A)          |
| Assistant Manager for Administration, NOO                  | 1 (9/100 A)          |
| Asst. Manager, Manufacturing, ALO                          | 1 (10/100 A)         |
| Asst. Manager, Administration, ALO                         | 1 (11/100 A)         |
| Asst. Manager, Advance Planning, ALO                       | 1 (12/100 A)         |
| Deputy Asst. Manager, NOO                                  | 1 (13/100 A)         |
| Area Manager, LAAD   | 1 (14/100 A)         |
| Area Manager, SAO  | 1 (15/100 A)         |
| USPHS (O. R. Placak)                                       | 1 (16/100 A)         |
| USWB (P. W. Allen)   | 1 (17/100 A)         |
| USWB (Leonard Machta, Wash. D.C.)                          | 1 (18/100 A)         |
| REECo (C. L. Tyler)  | 1 (19/100 A)         |
| EG&G (H. E. Grier)   | 1 (20/100 A)         |
| Director, Office of Info, ALO                              | 1 (21/100 A)         |
| Chief Counsel, ALO   | 1 (22/100 A)         |
| Director, Security Division, ALO                           | 1 (23/100 A)         |
| Director, E&C Division, ALO                                | 1 (24/100 A)         |
| Director, Division of Operational Safety, ALO              | 1 (25/100 A)         |
| Director, O&P Division, ALO                                | 1 (26/100 A)         |
| Director, Budget Division, ALO                             | 1 (27/100 A)         |
| Director, Storage Division, ALO                            | 1 (28/100 A)         |
| Director, Nucl. Mtl's Mgmt, ALO                            | 1 (29/100 A)         |
| Director, Project Operations Division, NOO                 | 1 (30/100 A)         |
| Director of Information, NOO                               | 1 (31/100 A)         |
| NOO, Las Vegas (M&R)                                       | <u>1</u> (32/100 A)  |
| TOTAL  | 32                   |
| <u>DOD Agencies</u>  |                      |
| Commander FC/DASA  | 1 (33/100 A)         |
| Assistant C of S WET FC/DASA                               | <u>1</u> (34/100 A)  |
| TOTAL  | 2                    |

~~SECRET~~

Task Force Agencies

|   |                       |
|---|-----------------------|
| Hq. JTF-8                                 | 12 (35 thru 46/100 A) |
| Scientific Deputy                         | 1 (47/100 A)          |
| CTU 8.1.1 (LASL)                          | 3 (48,49 & 50/100 A)  |
| CTU 8.1.2 (LRL)                           | 3 (51,52 & 53/100 A)  |
| CTU 8.1.3 (DASA, Albq)                    | 3 (54,55 & 56/100 A)  |
| CTU 8.1.4 (S/C)                           | 3 (57,58 & 59/100 A)  |
| CTU 8.1.5 (SSD)                           | 3 (60,61 & 62/100 A)  |
| CTU 8.1.6 (EG&G, Boston)                  | 3 (63,64 & 65/100 A)  |
| CTG 8.3 (Navy)                            | 3 (66,67 & 68/100 A)  |
| CTG 8.4 (Air Force)                       | 3 (69,70 & 71/100 A)  |
| CTG 8.6 (Base Command) (Johnston Island)  | 3 (72,73 & 74/100 A)  |
| CTG 8.7 (Base Command) (Christmas Island) | 3 (75,76 & 77/100 A)  |
| JTF-8 LNO (Travis AFB)                    | 1 (78/100 A)          |
| JTF-8 LNO (Hickam AFB)                    | 1 (79/100 A)          |
| JTF-8 LNO (Oakland)                       | <u>1 (80/100 A)</u>   |
| <br>                                      |                       |
| TOTAL                                     | 46                    |

TG 8.5 Elements

|  |                      |
|--|----------------------|
| CDR TG 8.5, James E. Reeves, Las Vegas                       | 1 (81/100 A)         |
| S-1 TG 8.5, NOO  | 1 (82/100 A)         |
| S-2 TG 8.5, NOO  | 1 (83/100 A)         |
| S-3/4 TG 8.5, NOO  | 1 (84/100 A)         |
| Engineer Officer TG 8.5                                      | 1 (85/100 A)         |
| Chief, Los Angeles Branch, LosA                              | 1 (86/100 A)         |
| TU 8.5.1 (H&N)   | 5 (87 thru 91/100 A) |
| TU 8.5.2(Scripps)  | 3 (92,93 & 94/100 A) |
| TU 8.5.3 (AEC) (Dr. Gordon Dunning)                          | 1 (95/100 A)         |
| Pacific Operations Branch TG 8.5                             | 2 (96 & 97/100 A)    |
| Project Engineer (Johnston Island)                           | 1 (98/100 A)         |
| Project Engineer (Christmas Island)                          | 1 (99/100 A)         |
| Project Engineer (Tutuila) (Attn: E. Wynkoop<br>at Honolulu) | <u>1 (100/100 A)</u> |
| <br>   |                      |
|  | 20                   |

JAMES E. REEVES  
COMMANDER TG 8.5

OFFICIAL

MILLER  
S-3

~~SECRET~~