

Scene Understanding for High Resolution SAR

Mihai Datcu
DLR Oberpfaffenhofen

Report Documentation Page

Form Approved
OMB No. 0704-0188

Public reporting burden for the collection of information is estimated to average 1 hour per response, including the time for reviewing instructions, searching existing data sources, gathering and maintaining the data needed, and completing and reviewing the collection of information. Send comments regarding this burden estimate or any other aspect of this collection of information, including suggestions for reducing this burden, to Washington Headquarters Services, Directorate for Information Operations and Reports, 1215 Jefferson Davis Highway, Suite 1204, Arlington VA 22202-4302. Respondents should be aware that notwithstanding any other provision of law, no person shall be subject to a penalty for failing to comply with a collection of information if it does not display a currently valid OMB control number.

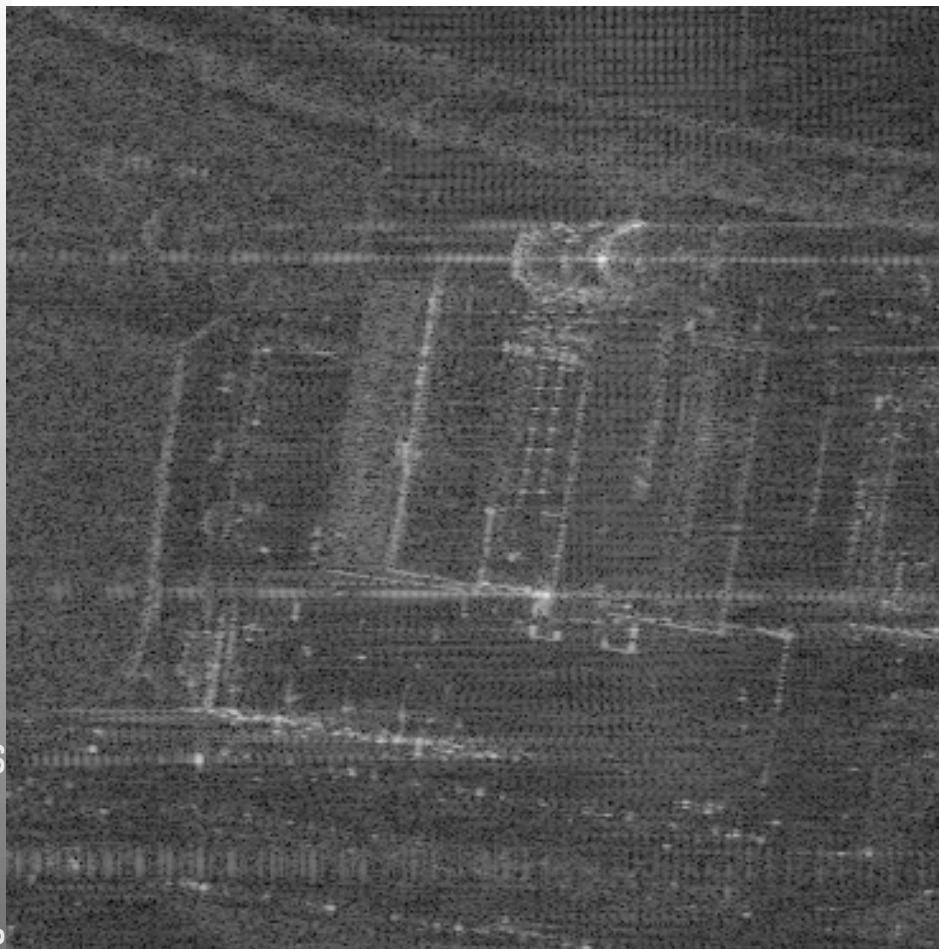
1. REPORT DATE 01 MAY 2005	2. REPORT TYPE N/A	3. DATES COVERED -			
4. TITLE AND SUBTITLE Scene Understanding for High Resolution SAR		5a. CONTRACT NUMBER			
		5b. GRANT NUMBER			
		5c. PROGRAM ELEMENT NUMBER			
6. AUTHOR(S)		5d. PROJECT NUMBER			
		5e. TASK NUMBER			
		5f. WORK UNIT NUMBER			
7. PERFORMING ORGANIZATION NAME(S) AND ADDRESS(ES) German Aerospace Center DLR Remote Sensing Technology Institute IMF Oberpfaffenhofen D-82234 Wessling GERMANY		8. PERFORMING ORGANIZATION REPORT NUMBER			
9. SPONSORING/MONITORING AGENCY NAME(S) AND ADDRESS(ES)		10. SPONSOR/MONITOR'S ACRONYM(S)			
		11. SPONSOR/MONITOR'S REPORT NUMBER(S)			
12. DISTRIBUTION/AVAILABILITY STATEMENT Approved for public release, distribution unlimited					
13. SUPPLEMENTARY NOTES See also ADM202152., The original document contains color images.					
14. ABSTRACT					
15. SUBJECT TERMS					
16. SECURITY CLASSIFICATION OF:			17. LIMITATION OF ABSTRACT UU	18. NUMBER OF PAGES 29	19a. NAME OF RESPONSIBLE PERSON
a. REPORT unclassified	b. ABSTRACT unclassified	c. THIS PAGE unclassified			

Objectives

Resolution	30-10m	10-5m	1m	10cm
Nature objects and scenes	Backscatter amplitude	Backscatter and some textures	Very important use of textures	
Man-made objects	Point of important signal	Some textures and some scatters	Geometrical interpretation using strong scatters	Only a composition of strong scatters
Developed theory	Well-known studies	Knowledge	?	Some research
Missions or used by...	ERS 1/2 RADARSAT		Only experimental airborne data	Military

TerraSAR

Meter resolution SAR analysis



Intermap Maastricht,
0.5m

- Target detection

*(adaptive CFAR,
stability over series...)*

- Target characterization

(peak power & phase...)

- Scattering studies

*(scattering models,
simulators...)*

- Target spectral
analysis

*(Wavenumber shift,
range gates...)*

- EM Scattering

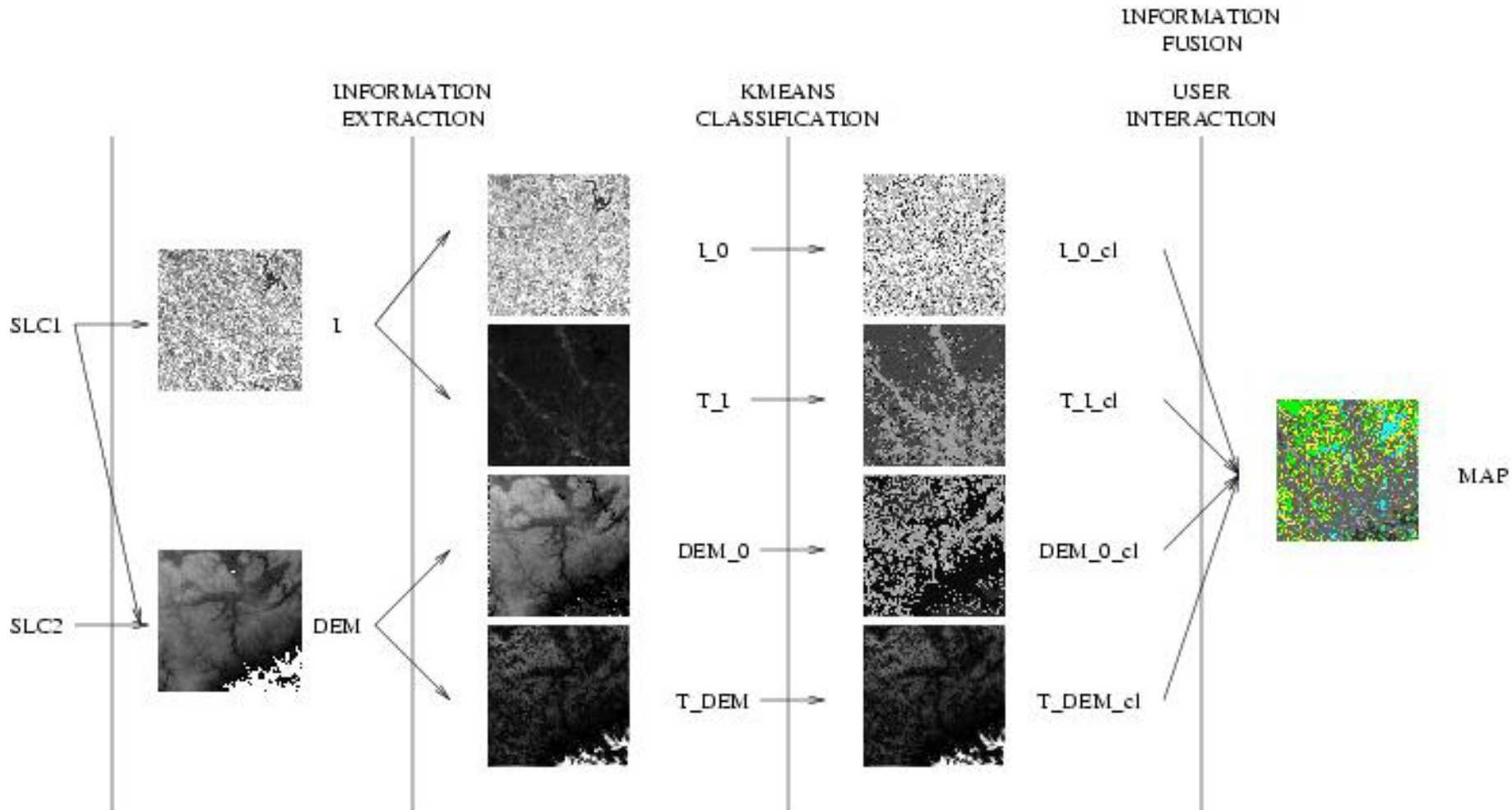
(target signatures...)

Complex image
analysis

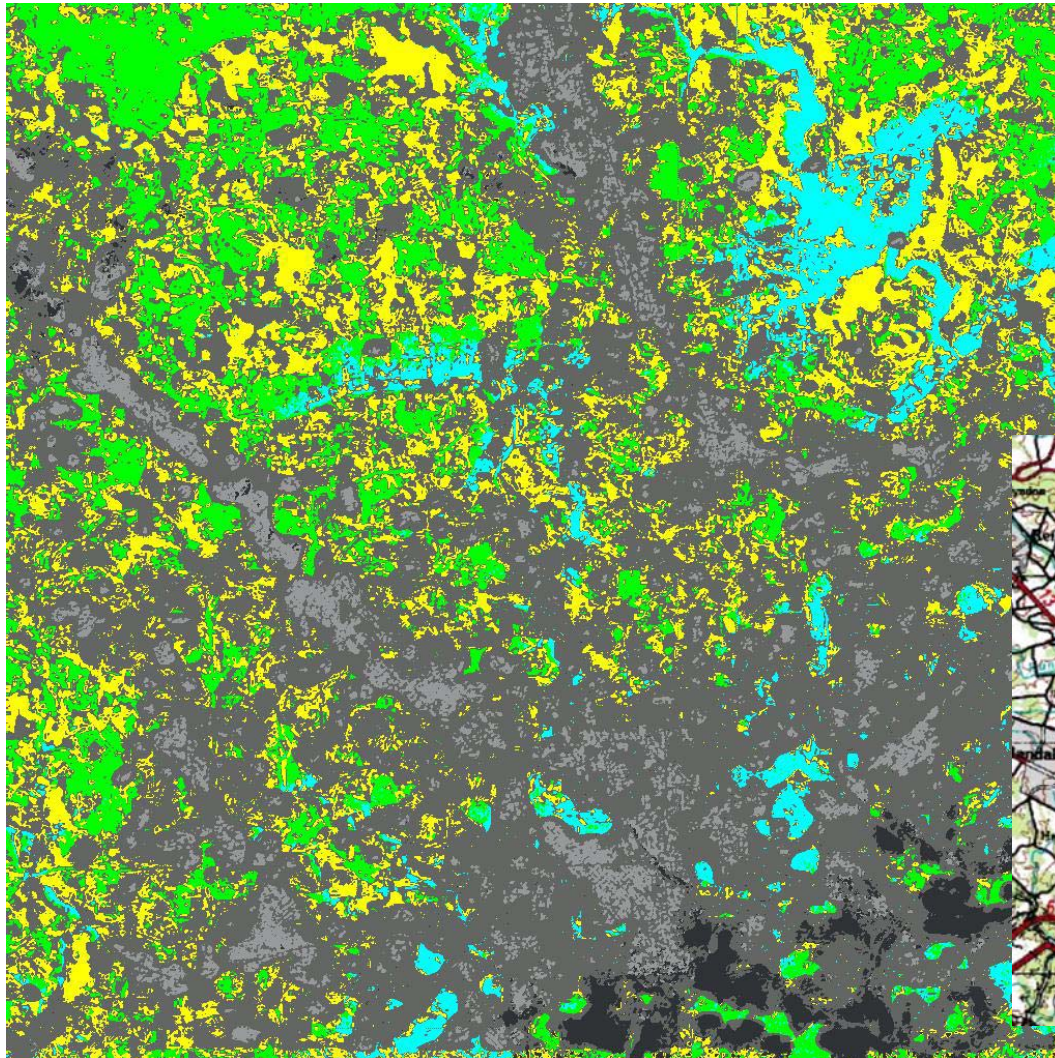
Scene & image
formation
phenomenology







1. **Image Information Mining**
2. **Stochastic Geometrical Modeling and Estimation**
3. **Cepstrum Analysis**
4. **Fourier-Mellin Analysis**
5. **Internal coherence Analysis**

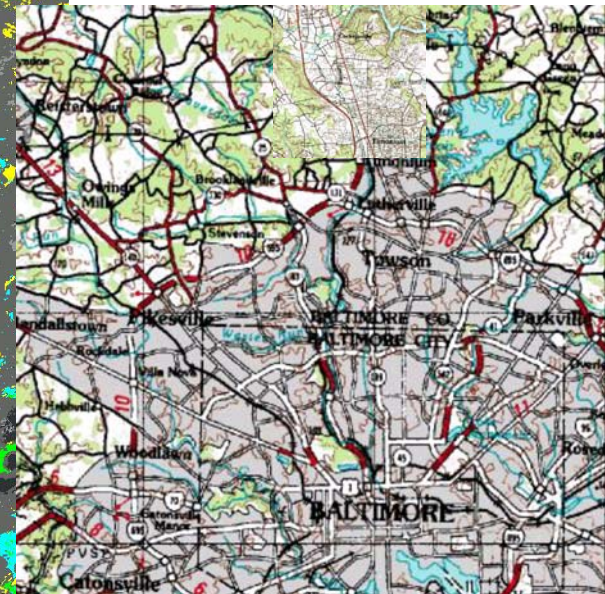
Fusion of features derived from interferogram, intensity, height



2D: Urban Land Use from SRTM data



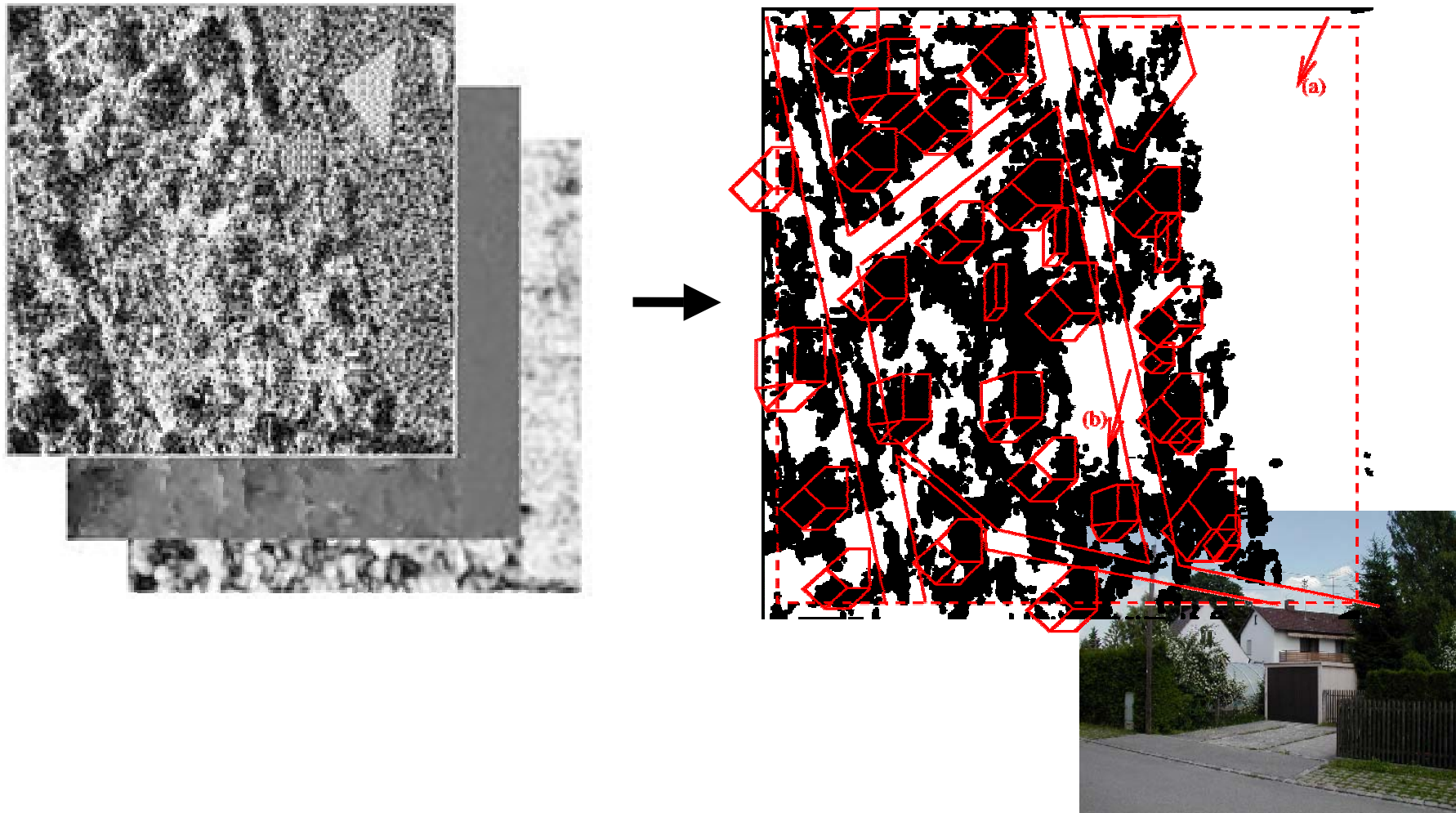
-  dense urbanized
-  medium urbanized
-  light urbanized
-  forest
-  agricultural
-  water



Baltimore, USA

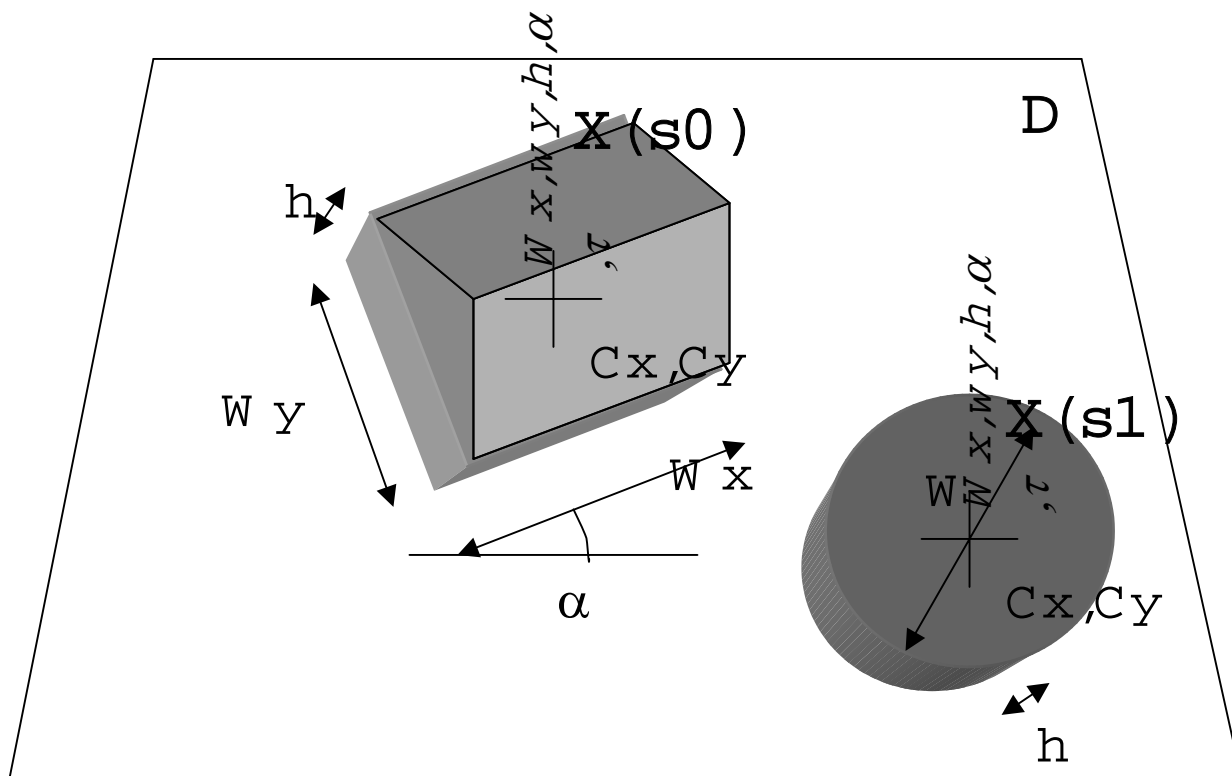
2D: Building detection through information fusion

Intern ap Munich East, 0.5m

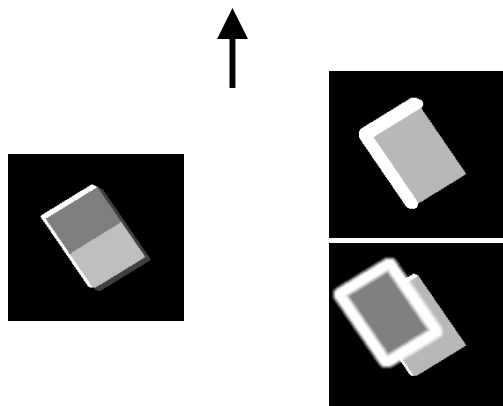
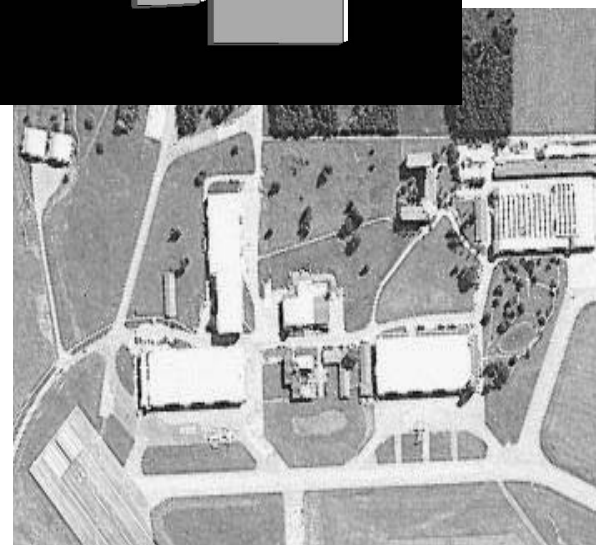
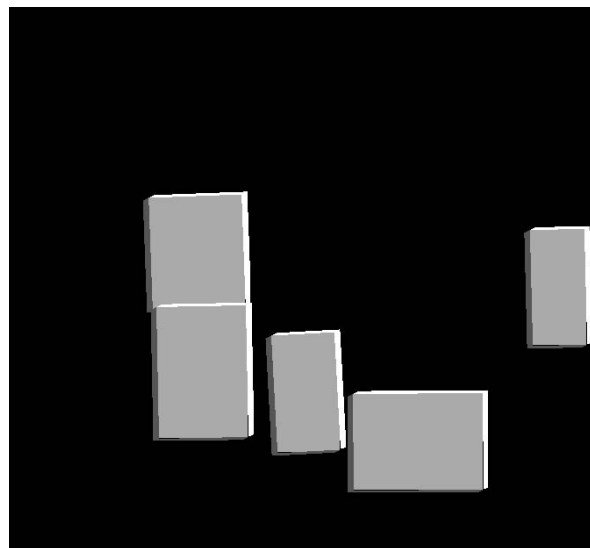
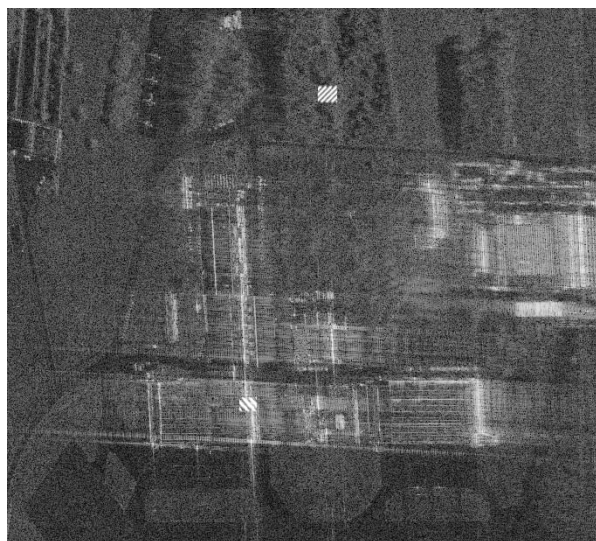


Marked point processes

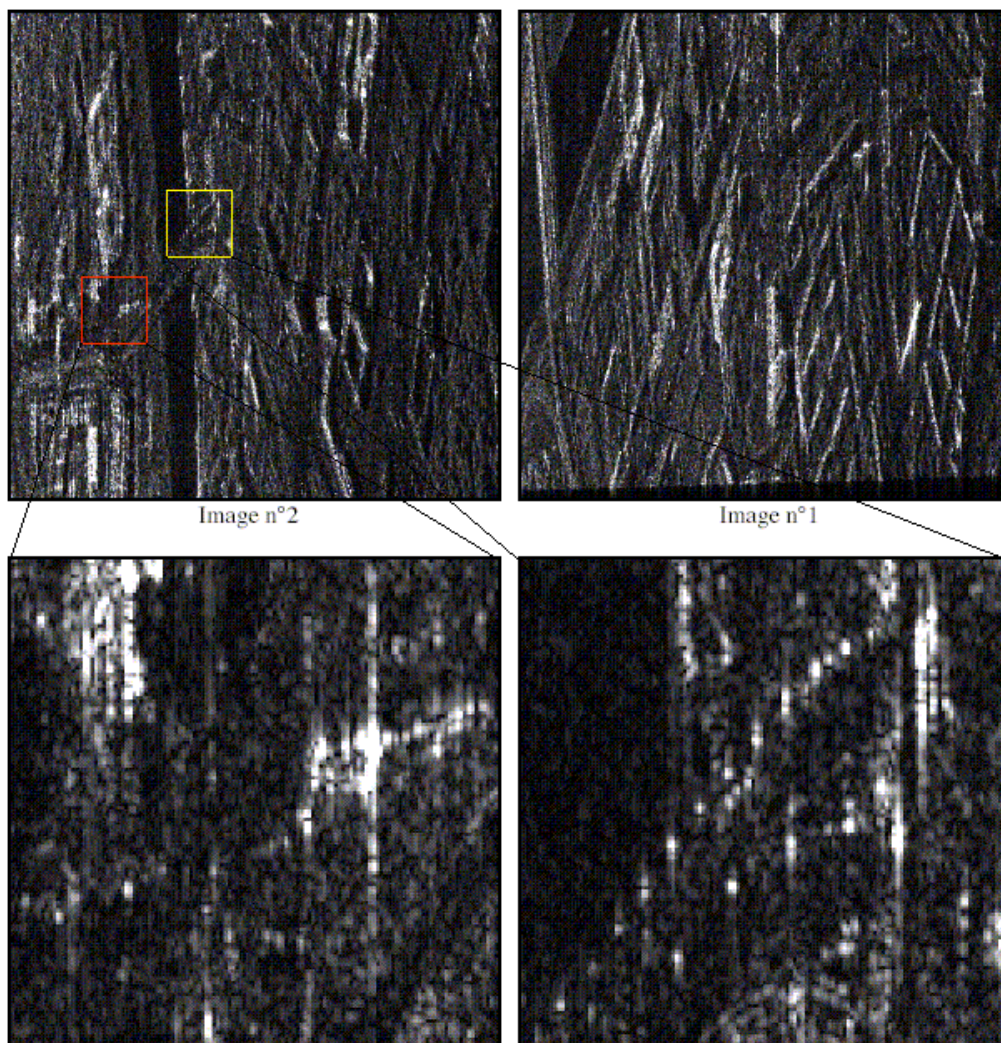
$$S = \{ X(s) : s \in D \} \quad X(s) = (w, h, \alpha, \tau)$$



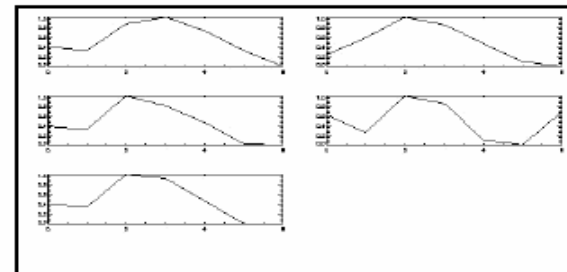
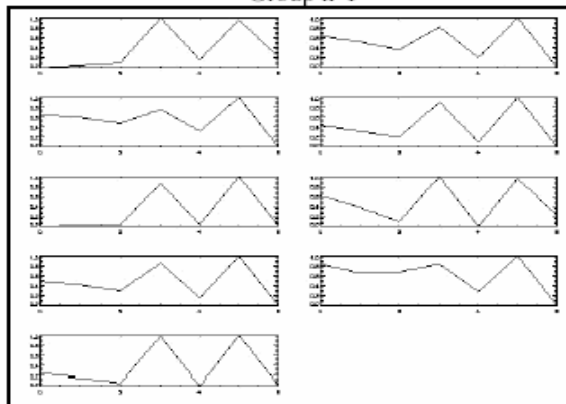
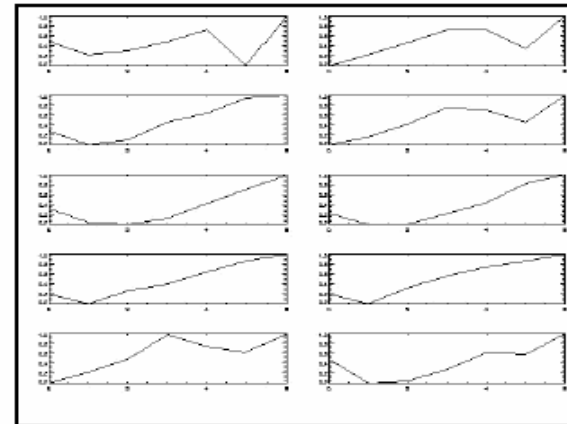
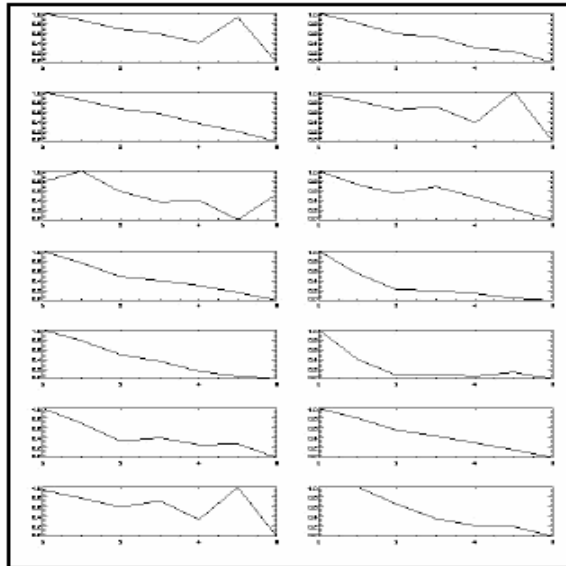
Detection and recognition of industrial buildings



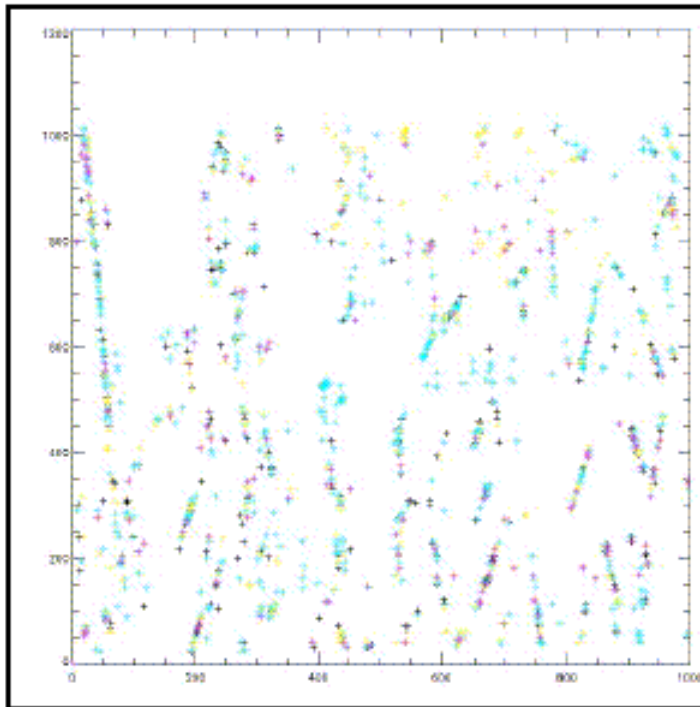
For urban scenes information concentrate in scattering centers



Extract, select and group cepstrum signatures



Targets clasification based on cepstrum signatures



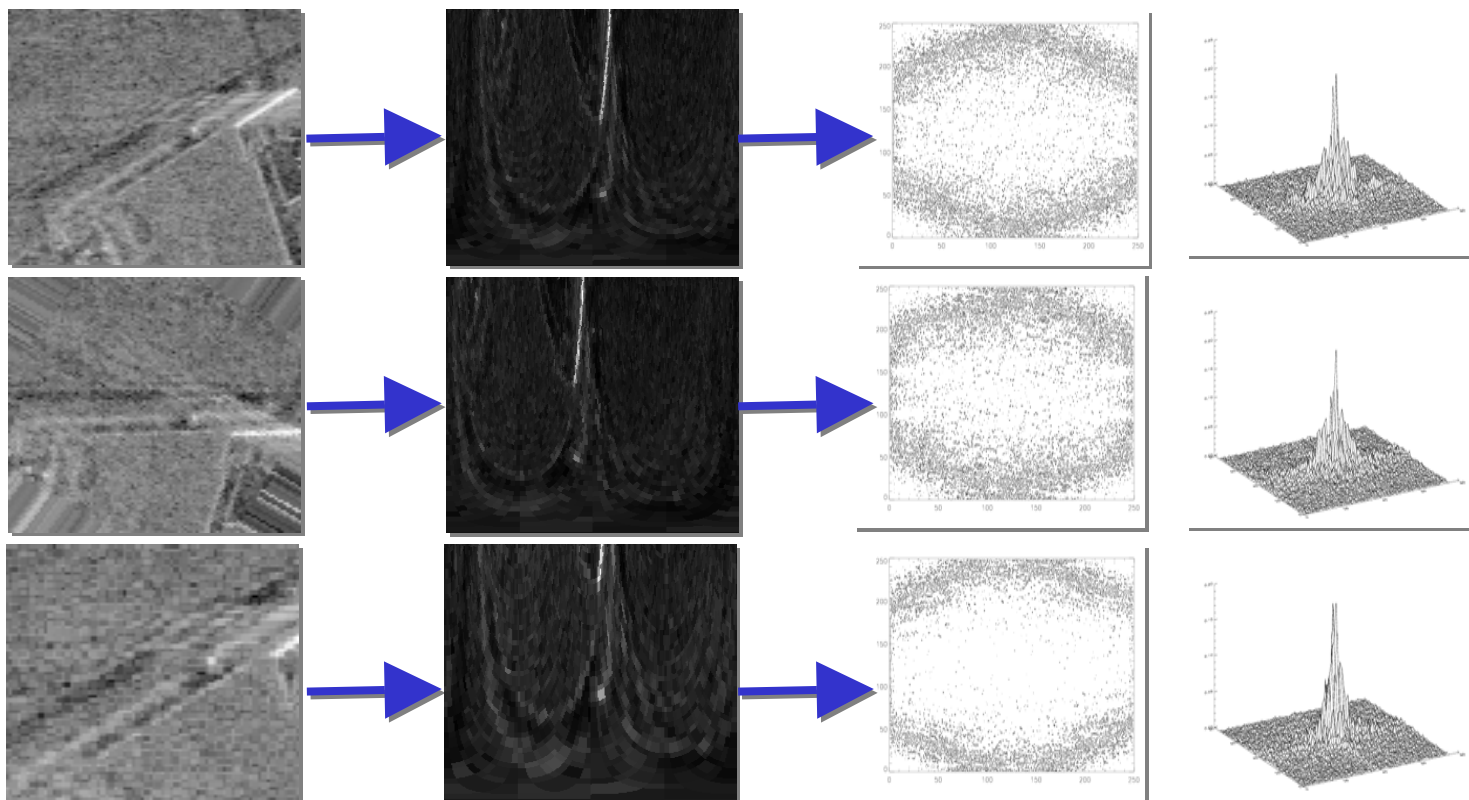
Normalized coefficients grouping for the image n°1; groups are (253, 666, 238, 168)

Observation: good correlation with scene structures

$$\mathcal{M}_{f_\sigma}(k, v) = \frac{1}{2\pi} \int_0^\infty \int_0^{2\pi} f(r, \theta) r^{\sigma-iv} e^{-ik\theta} d\theta \frac{dr}{r}$$

log polar

Fourier Transform

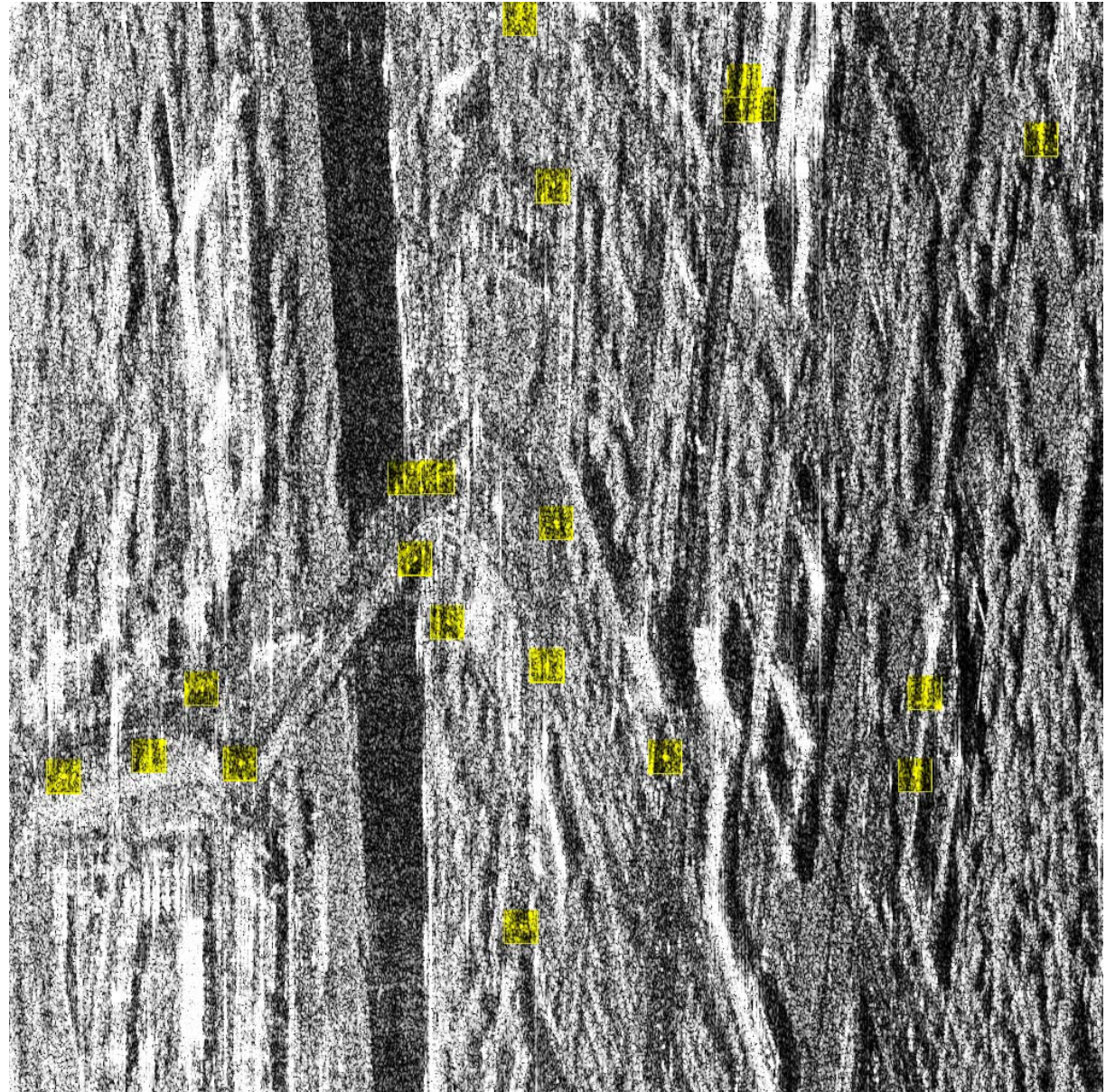
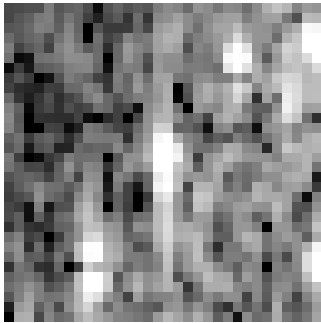


**Rotated
33 deg**

**Scaled
150%**

Rotation, scaling invariance

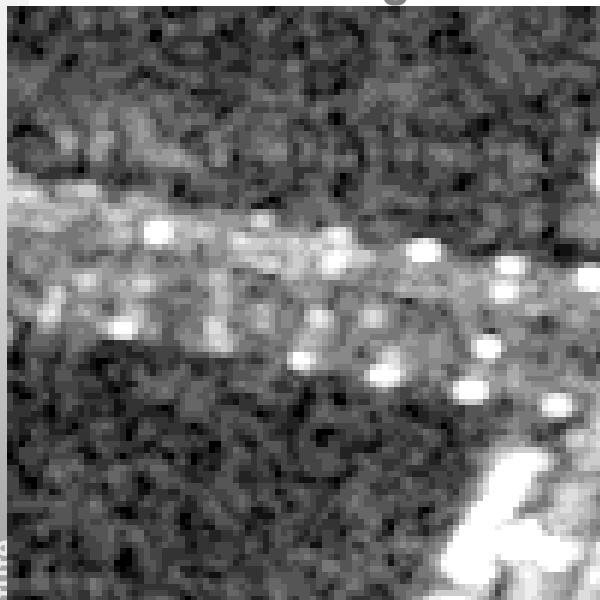
Target detection and recognition Example 1



*Dresden,
E-SAR
X band 2m*

Recognition of scene elements: bridge

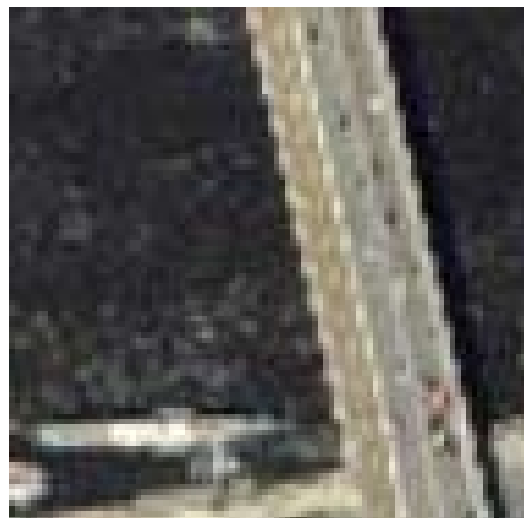
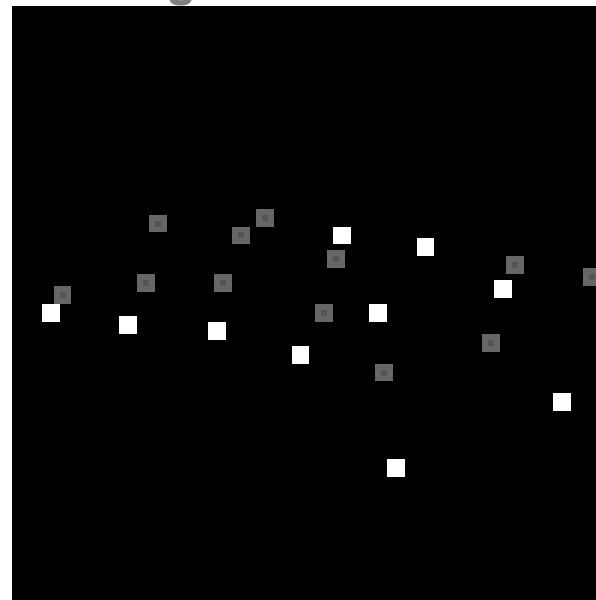
SAR image



Target detection



Target classification



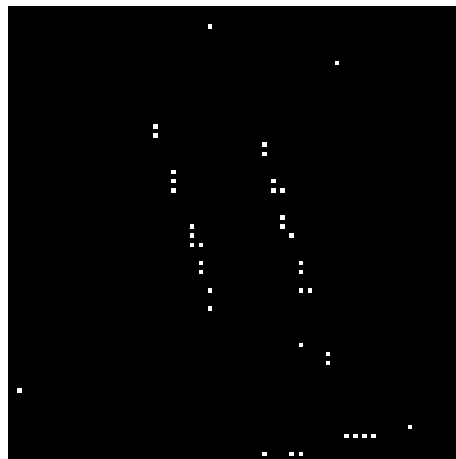
*Dresden,
E-SAR
X band 2m*

Building characterization: base and roof scattering

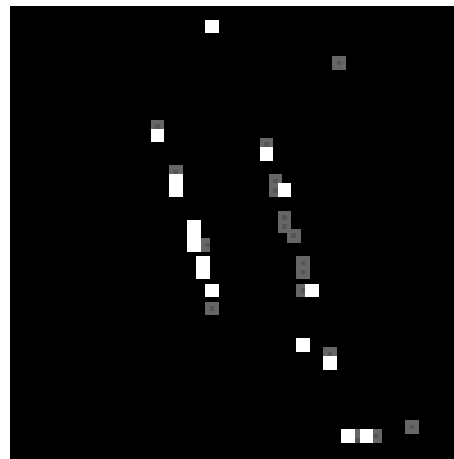
SAR image



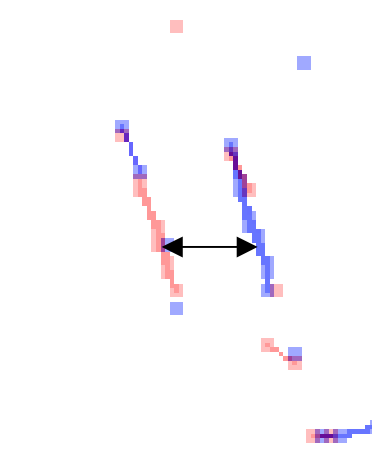
Target detection



Targets classification



Targets grouping



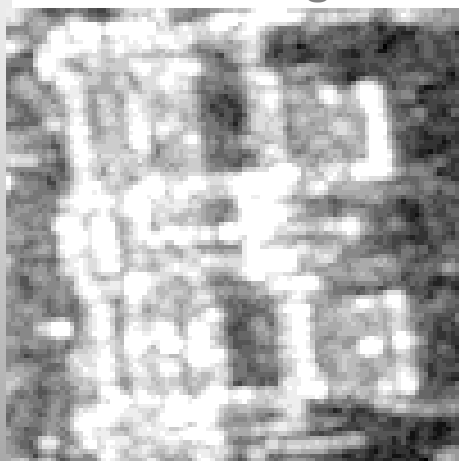
Estimated building height: 14 meters
(consistent with LIDAR)

*Dresden,
E-SAR
X band 2m*

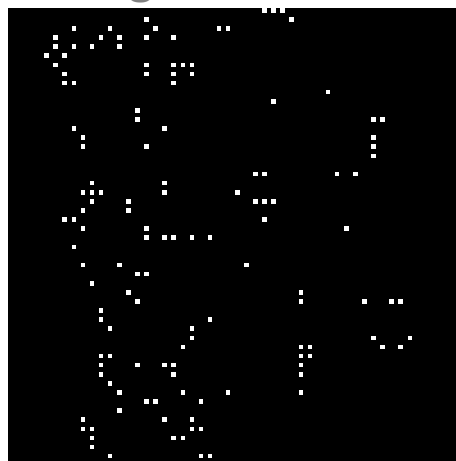


Building elements recognition

SAR image



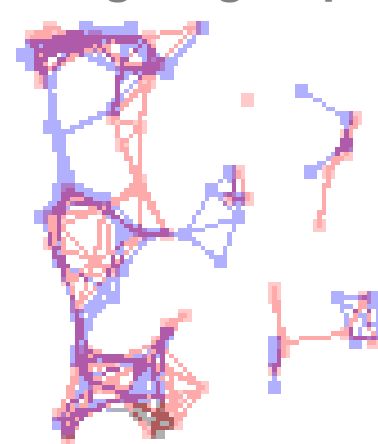
Target detection



Target classification



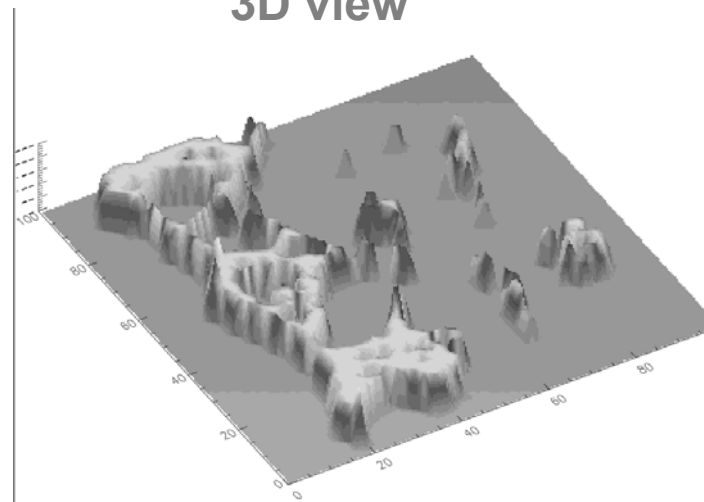
Targets grouping



*Dresden,
E-SAR
X band 2m*

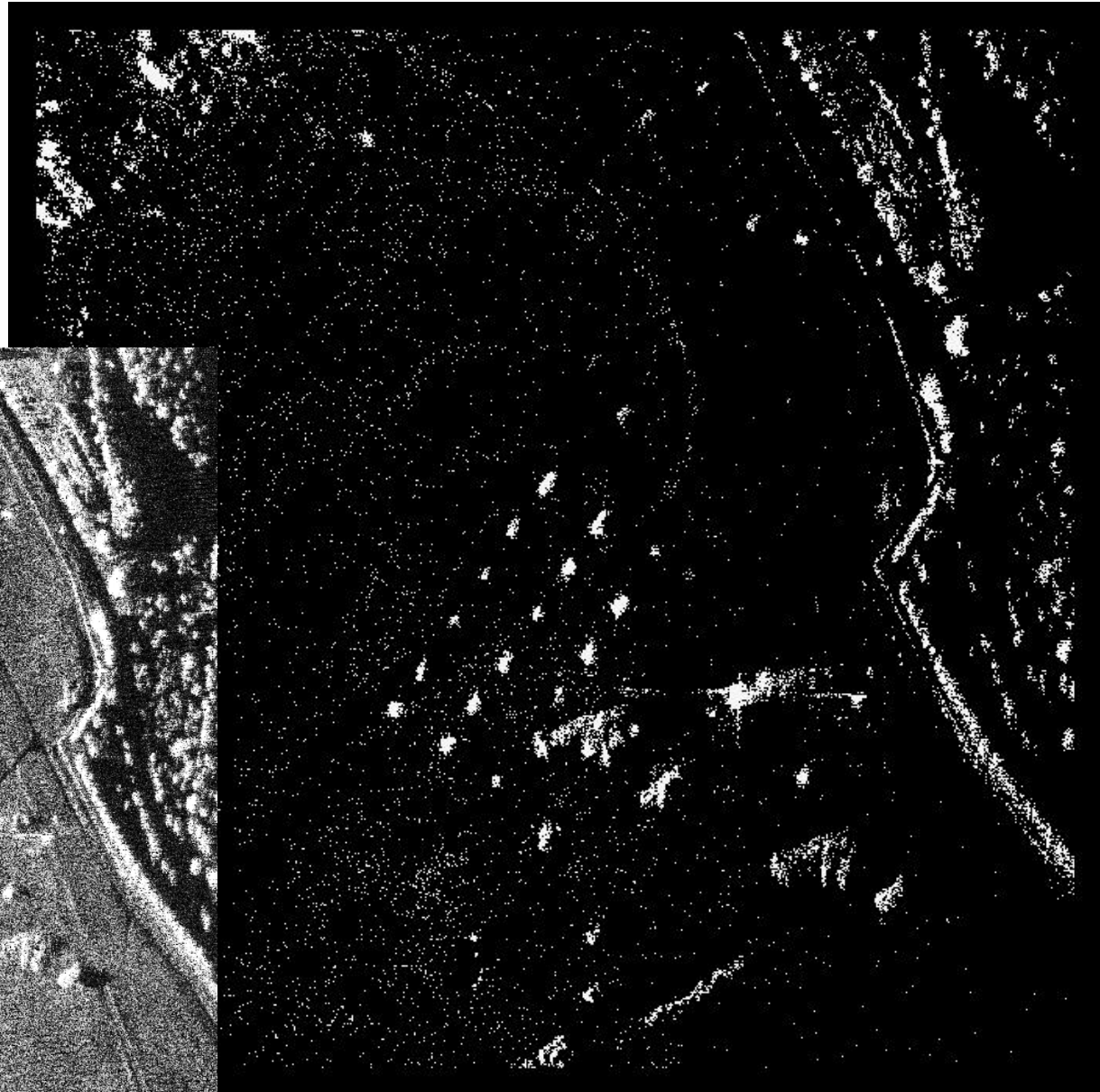


3D view

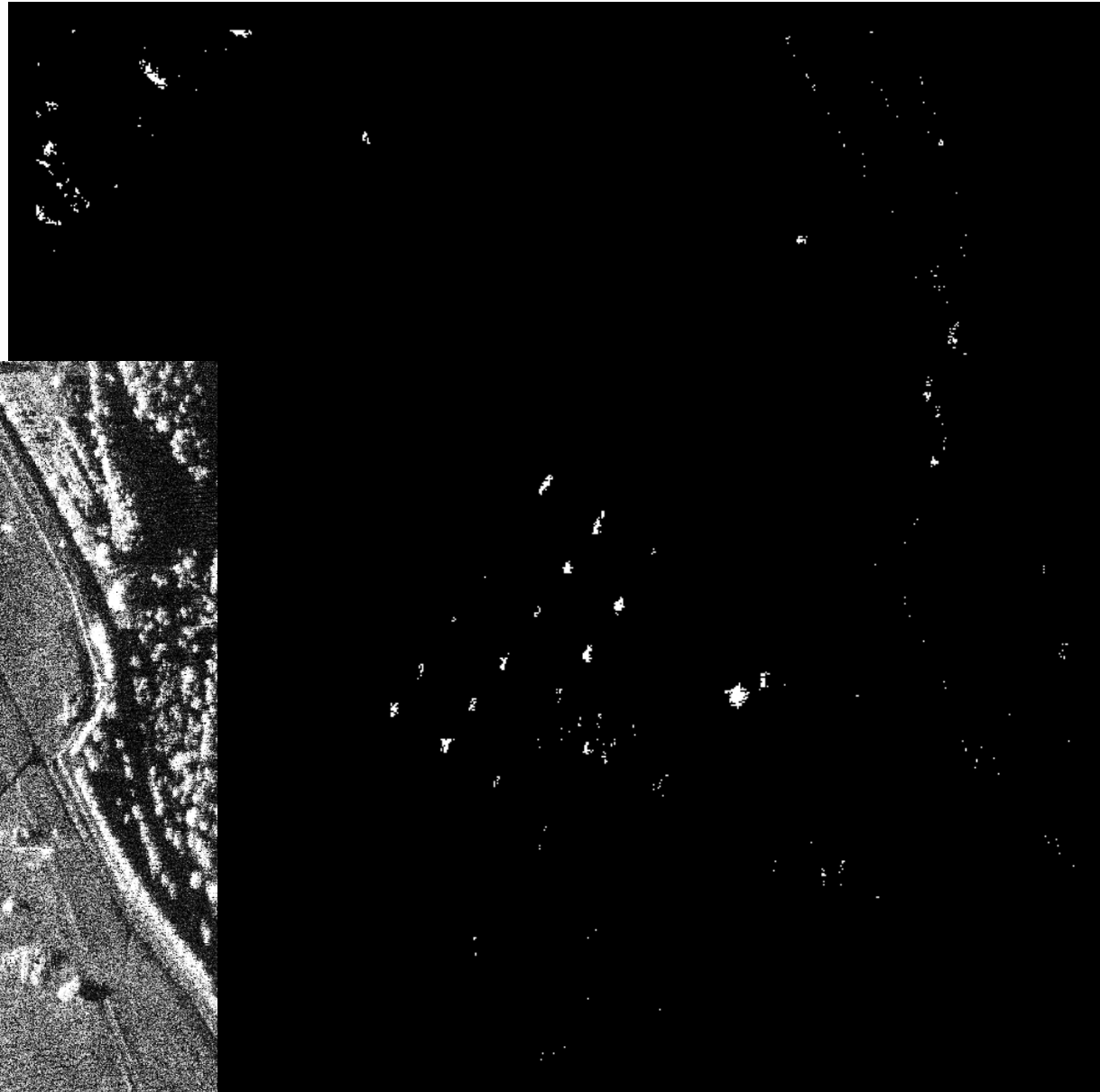


Target detection 1

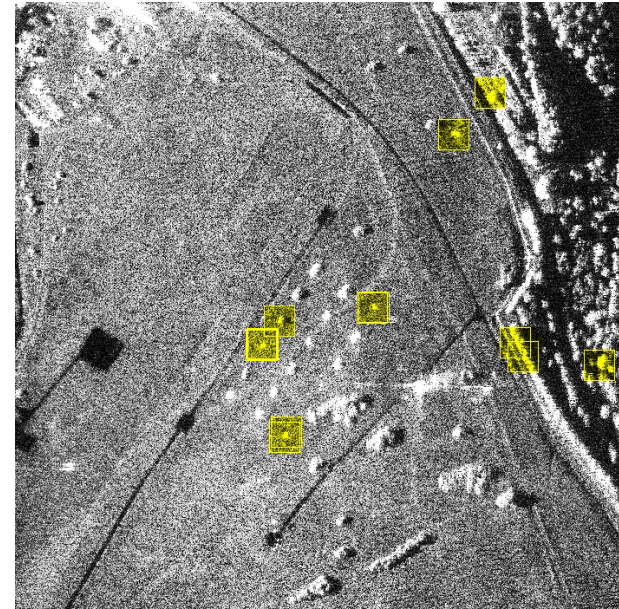
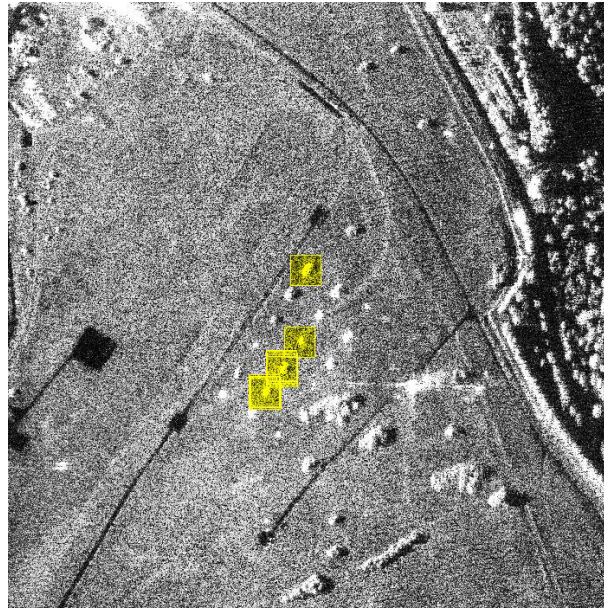
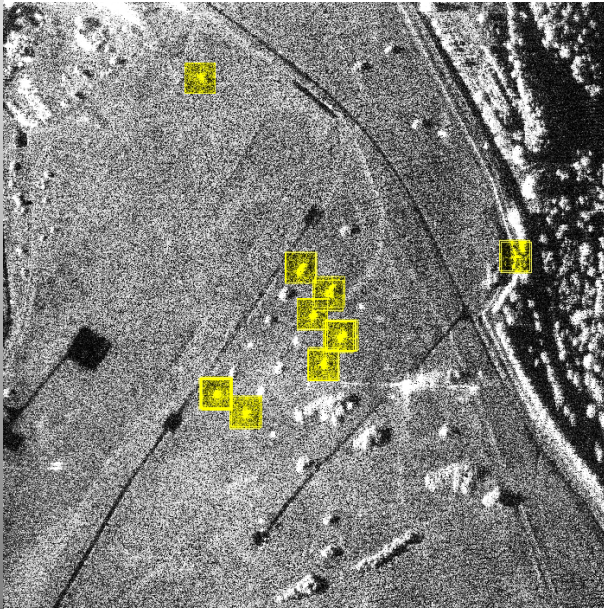
FGAN SAR
HH channel



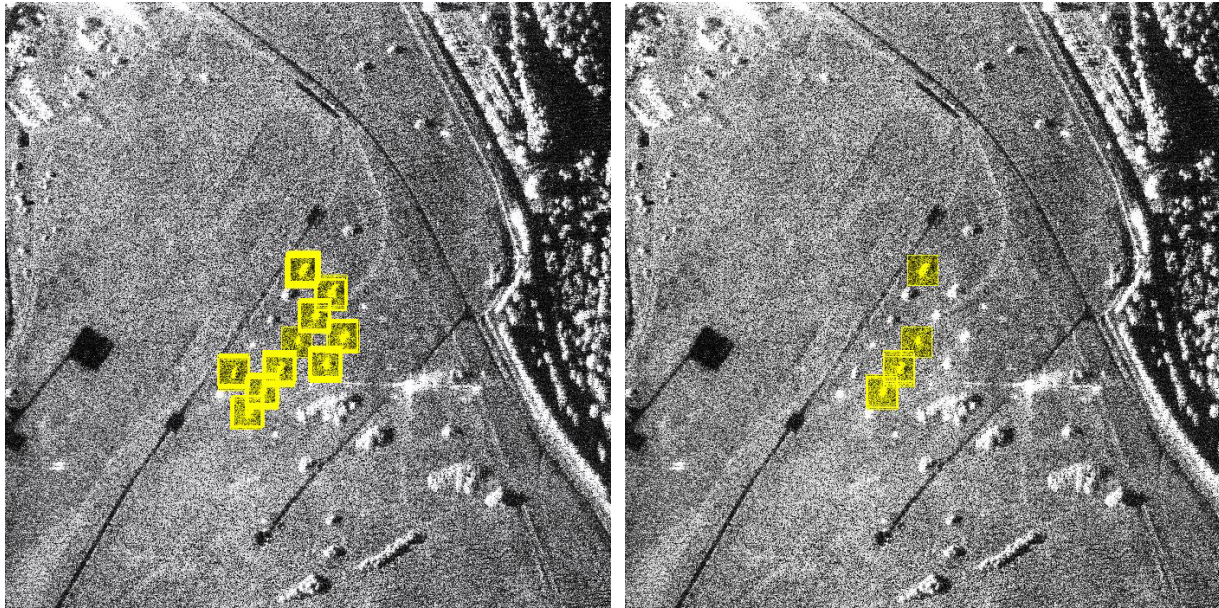
Target detection 2



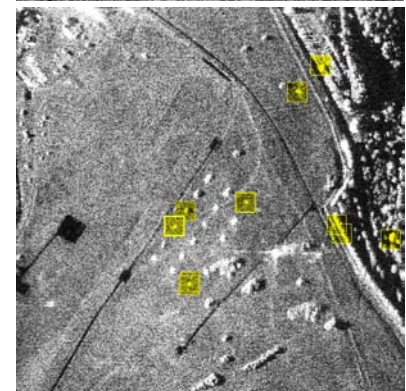
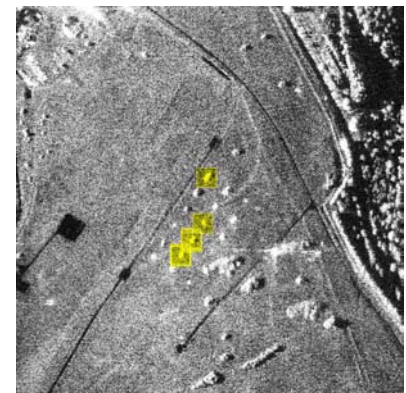
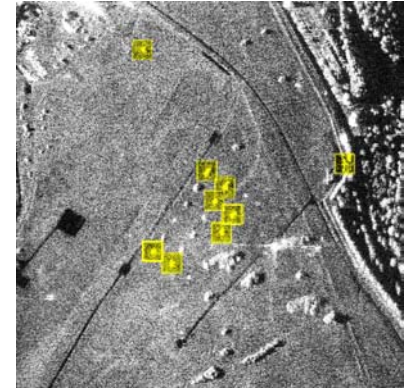
Target classification (HH channel)

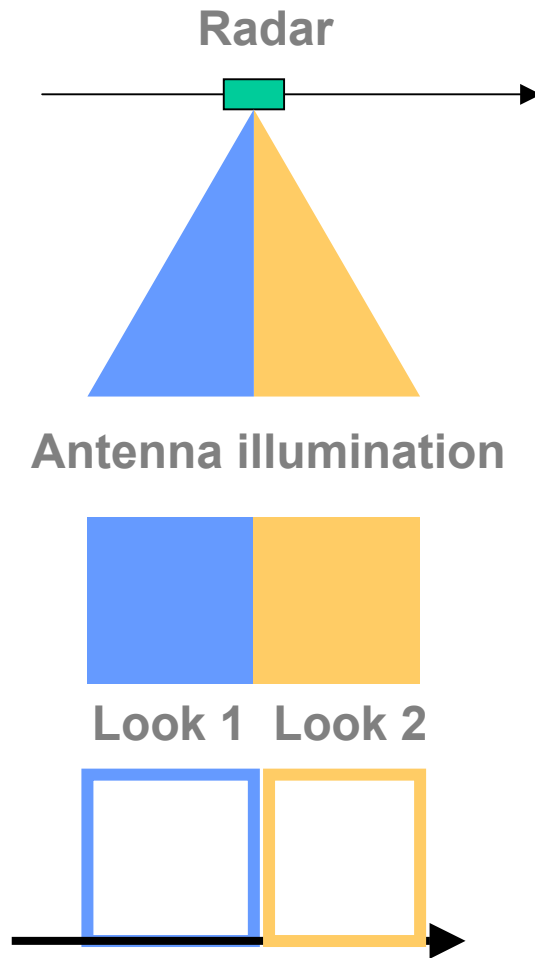


Target classification (PoISAR)



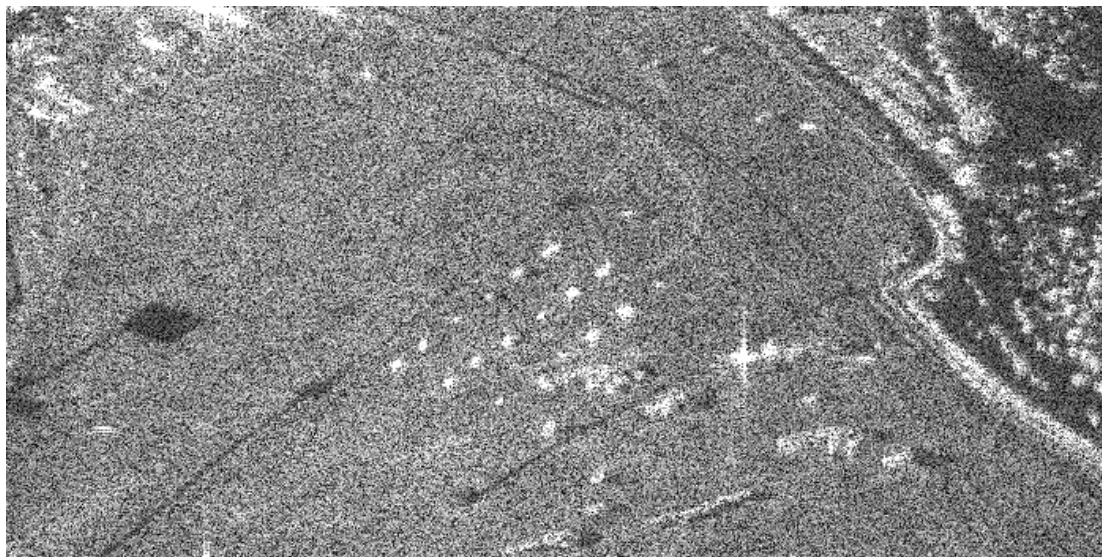
HH channel



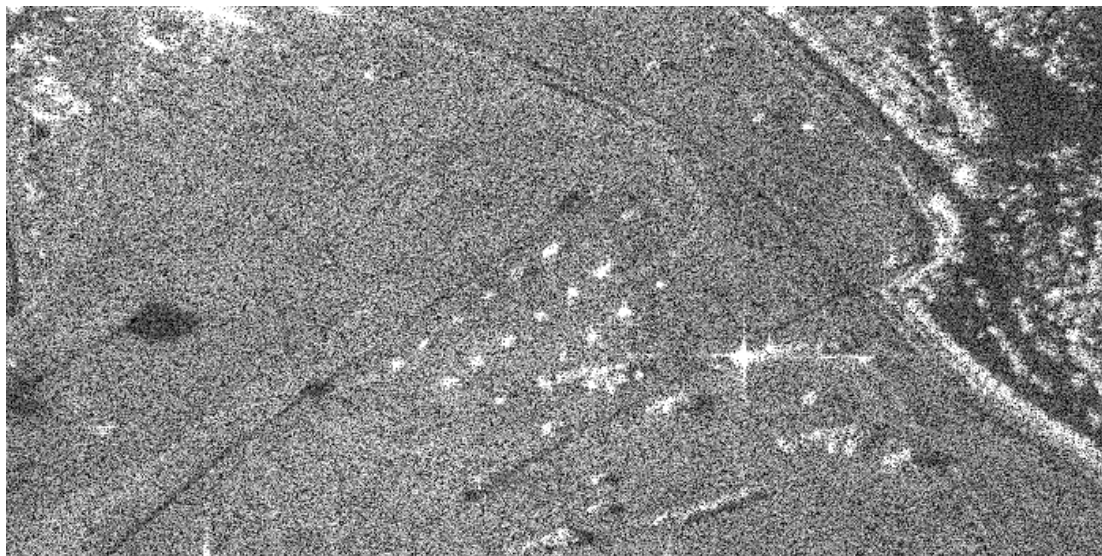


$$\rho_{int} = \frac{\langle s_1 \cdot s_2^* \rangle}{\sqrt{\langle |s_1|^2 \rangle \langle |s_2|^2 \rangle}}$$

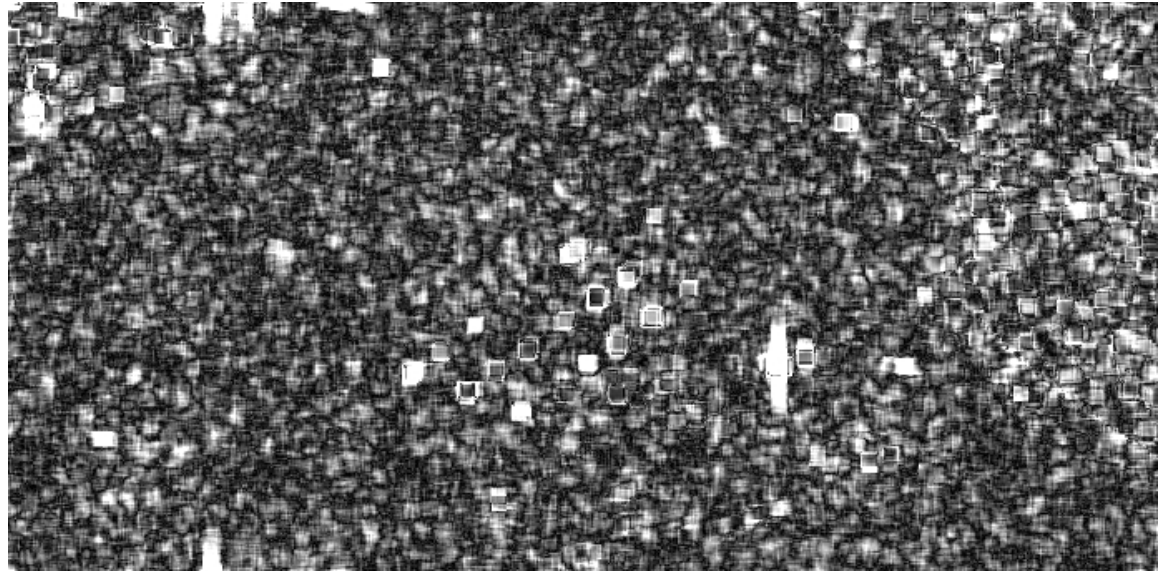
Look 1 (HH channel)



Look 2 (HH channel)



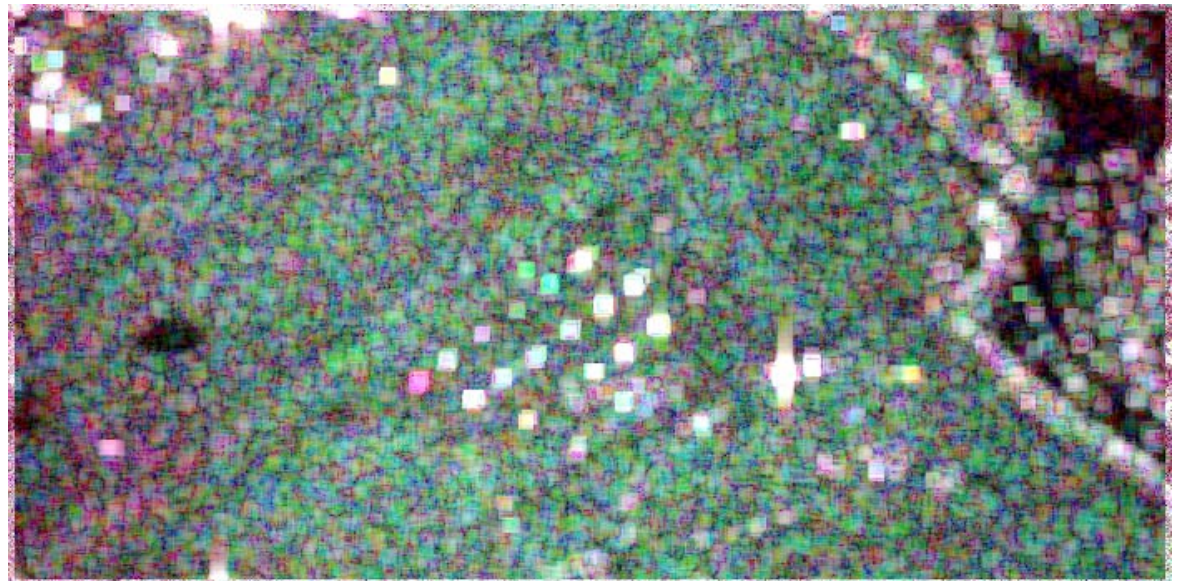
Coherence HH_1*HH_2



Coherence HH_1*VV_2

Coherence HH_1*VV_2

Coherence VV_1*HH_2



Knowledge Driven Image Information Mining **KIM**
Knowledge Enabled Services **KES**

On line demo

<http://kes.acsys.it/kimv>

Members: ASI, CNES, CNR, DLR, EC-IST, ESA, ETHZ, EUSC

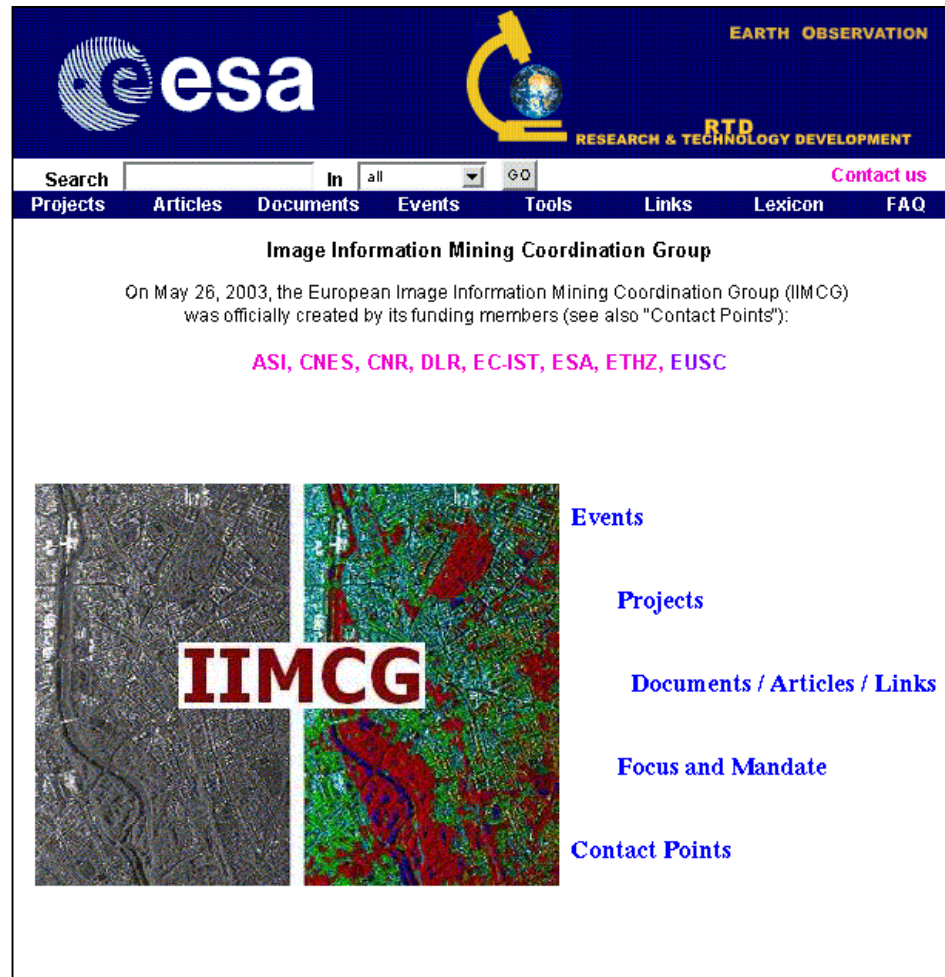
Chair: Sergio D'Elia, ESA/ESRIN

IIMCG focus: research and technological activities for automated and user centred extraction of information from EO images and image archives in support to content understanding

Events:

ESA-EUSC 2002: Joint seminar on Knowledge driven Information Management in Earth Observation data, ESRIN, Frascati, December 5-6, 2002, Madrid, March 17-18, 2004

ESA-EUSC 2005: Theory and Applications of Knowledge driven Image Information Mining with focus on Earth Observation, ESRIN, Frascati, October, 2005



The screenshot shows the IIMCG website interface. At the top, there is a navigation bar with the ESA logo on the left, the text 'EARTH OBSERVATION' and 'RTD RESEARCH & TECHNOLOGY DEVELOPMENT' on the right, and a search bar in the center. Below the navigation bar is a menu with links for 'Projects', 'Articles', 'Documents', 'Events', 'Tools', 'Links', 'Lexicon', and 'FAQ'. The main content area features the title 'Image Information Mining Coordination Group' and a paragraph stating: 'On May 26, 2003, the European Image Information Mining Coordination Group (IIMCG) was officially created by its funding members (see also "Contact Points"):'. Below this text is a list of funding members: 'ASI, CNES, CNR, DLR, EC-IST, ESA, ETHZ, EUSC'. The central part of the page displays two satellite images side-by-side, with the 'IIMCG' logo overlaid in the center. To the right of the images is a vertical list of links: 'Events', 'Projects', 'Documents / Articles / Links', 'Focus and Mandate', and 'Contact Points'.

Scene Understanding for High Resolution SAR

Mihai Datcu

German Aerospace Center

DLR

Remote Sensing Technology Institute IMF

Oberpfaffenhofen

D-82234 Wessling

GERMANY

*This paper was received as a PowerPoint
presentation without supporting text.*

Scene Understanding for High Resolution SAR

