

Award Number: W81XWH-06-1-0238

TITLE: Effects of Inactivating Ras-Converting Enzyme or Isoprenylcysteine Carboxyl Methyltransferase in the Pathogenesis of Chronic Myelogenous Leukemia

PRINCIPAL INVESTIGATOR: Ruibao Ren, M.D., Ph.D.

CONTRACTING ORGANIZATION: Brandeis University
Waltham, MA 02454

REPORT DATE: February 2007

TYPE OF REPORT: Annual

PREPARED FOR: U.S. Army Medical Research and Materiel Command
Fort Detrick, Maryland 21702-5012

DISTRIBUTION STATEMENT: Approved for Public Release;
Distribution Unlimited

The views, opinions and/or findings contained in this report are those of the author(s) and should not be construed as an official Department of the Army position, policy or decision unless so designated by other documentation.

REPORT DOCUMENTATION PAGE

Form Approved
OMB No. 0704-0188

Public reporting burden for this collection of information is estimated to average 1 hour per response, including the time for reviewing instructions, searching existing data sources, gathering and maintaining the data needed, and completing and reviewing this collection of information. Send comments regarding this burden estimate or any other aspect of this collection of information, including suggestions for reducing this burden to Department of Defense, Washington Headquarters Services, Directorate for Information Operations and Reports (0704-0188), 1215 Jefferson Davis Highway, Suite 1204, Arlington, VA 22202-4302. Respondents should be aware that notwithstanding any other provision of law, no person shall be subject to any penalty for failing to comply with a collection of information if it does not display a currently valid OMB control number. **PLEASE DO NOT RETURN YOUR FORM TO THE ABOVE ADDRESS.**

1. REPORT DATE 01-02-2007		2. REPORT TYPE Annual		3. DATES COVERED 1 Feb 2006 – 31 Jan 2007	
4. TITLE AND SUBTITLE Effects of Inactivating Ras-Converting Enzyme or Isoprenylcysteine Carboxyl Methyltransferase in the Pathogenesis of Chronic Myelogenous Leukemia				5a. CONTRACT NUMBER	
				5b. GRANT NUMBER W81XWH-06-1-0238	
				5c. PROGRAM ELEMENT NUMBER	
6. AUTHOR(S) Ruibao Ren, M.D., Ph.D. Email: ren@brandeis.edu				5d. PROJECT NUMBER	
				5e. TASK NUMBER	
				5f. WORK UNIT NUMBER	
7. PERFORMING ORGANIZATION NAME(S) AND ADDRESS(ES) Brandeis University Waltham, MA 02454				8. PERFORMING ORGANIZATION REPORT NUMBER	
10. SPONSOR/MONITOR'S ACRONYM(S)				11. SPONSOR/MONITOR'S REPORT NUMBER(S)	
13. SUPPLEMENTARY NOTES					
				14. ABSTRACT The BCR-ABL fusion gene, the hallmark of CML, plays a causal role in the development of CML. The BCR-ABL tyrosine kinase inhibitors have been successfully used to treat patients with CML, but residual disease persists and drug resistance emerges. This clinical time bomb will have to be diffused in the not so distant future. Although BCR-ABL remains to be an attractive target for developing CML therapies, identifying and targeting additional essential components in the development of CML are important for overcoming resistance to BCR-ABL tyrosine kinase inhibitors and for eradicating leukemic cells. Substantial evidence indicates that Ras and Ras related proteins, which are commonly activated in human cancers, are critical mediators of BCR-ABL in leukemogenesis. Ras-converting enzyme (Rce1) and isoprenylcysteine carboxyl methyltransferase (Icmt) are two unique enzymes for Ras modifications that are critical for their functions. Targeted inactivation of Rce1 or Icmt is, therefore, an attractive strategy for the treatment of CML. The goal of this project is to determine whether targeted inactivation of Rce1 or Icmt could block BCR-ABL leukemogenesis. In the past funding period we have generated mice with conditional alleles of Rce1 or Icmt and used these mice to evaluate the importance of Rce1 in BCR-ABL leukemogenesis. Our preliminary results show that Rce1 plays an important role in the pathogenesis of CML.	
15. SUBJECT TERMS Chronic Myelogenous Leukemia (CML) BCR-ABL, Ras, Ras-converting enzyme (Rce1), isoprenylcysteine carboxyl methyltransferase (Icmt)					
16. SECURITY CLASSIFICATION OF:			17. LIMITATION OF ABSTRACT	18. NUMBER OF PAGES	19a. NAME OF RESPONSIBLE PERSON USAMRMC
a. REPORT U	b. ABSTRACT U	c. THIS PAGE U			19b. TELEPHONE NUMBER (include area code)

Table of Contents

	<u>Page</u>
Introduction.....	1
Body.....	1
Key Research Accomplishments.....	3
Reportable Outcomes.....	3
Conclusion.....	3
References.....	3
Appendices.....	3

Effects of Inactivating Ras-Converting Enzyme or Isoprenylcysteine Carboxyl Methyltransferase in the Pathogenesis of Chronic Myelogenous Leukemia

Report

Introduction

The *BCR-ABL* fusion gene, the hallmark of CML, plays a causal role in the development of CML. The BCR-ABL tyrosine kinase inhibitors have been successfully used to treat patients with CML, but residual disease persists and drug resistance emerges. This clinical time bomb will have to be diffused in the not so distant future. Although BCR-ABL remains to be an attractive target for developing CML therapies, identifying and targeting additional essential components in the development of CML are important for overcoming resistance to BCR-ABL tyrosine kinase inhibitors and for eradicating leukemic cells. Substantial evidence indicates that Ras and Ras related proteins, which are commonly activated in human cancers, are critical mediators of BCR-ABL in leukemogenesis. Ras-converting enzyme (Rce1) and isoprenylcysteine carboxyl methyltransferase (Icmt) are two unique enzymes for Ras modifications that are critical for their functions. Targeted inactivation of Rce1 or Icmt is, therefore, an attractive strategy for the treatment of CML. The goal of this project is to determine whether targeted inactivation of Rce1 or Icmt could block BCR-ABL leukemogenesis. In the past funding period we have generated mice with conditional alleles of Rce1 or Icmt and used these mice to evaluate the importance of Rce1 and Icmt in BCR-ABL leukemogenesis. Our preliminary results show that Icmt plays an important role in the pathogenesis of CML.

Body

1. (Task 1) We have generated Rce1^{flx/flx} or Icmt^{flx/flx} mice, as well as Rce1^{flx/+}, Icmt^{flx/+}, Rce1^{+/+}, or Icmt^{+/+} control mice harboring the Mx1-Cre transgene through breeding Rce1^{flx/+}/Mx1-Cre and Icmt^{flx/+}/Mx1-Cre mice.
2. (Task 6) Since last submission, we have made new progress on the project, which is reported here. We examined the leukemogenic potential of BCR-ABL with or without Rce1 or Icmt using the mouse bone marrow transduction and transplantation model for CML as proposed. Briefly Cre expression was induced in Rce1^{flx/flx}/Mx1-Cre, Rce1^{flx/+}/Mx1-Cre, Icmt^{flx/flx}/Mx1-Cre, Icmt^{flx/+}/Mx1-Cre, or Mx1-Cre control mice by intraperitoneal injections of polyinosinic-polycytidylic ribonucleic acid (pI-pC) for 4 times. These mice were then treated with 5-fluoruracil (5-FU) for 4 days to enrich and activate hematopoietic stem cells. Bone marrow (BM) cells from the above mice were isolated and transduced with *BCR-ABL* retroviruses. As shown in Figure 1, BCR/ABL leukemogenic potential was reduced in pI-pC-induced Rce1^{flx/+}/Mx1-Cre mice, compared to BCR/ABL transduced Rce1^{+/+}/Mx1-Cre mice. However, BCR/ABL transduced Rce1^{flx/flx}/Mx1-Cre mice developed disease much faster than the control mice with wt Rce1. These data suggest that the role of Rce1 in BCR/ABL leukemogenesis is complicated and dependent on the dosage. This may be due to the fact that there are many substrates of Rce1, some of them may facilitate BCR-ABL leukemogenesis, while others may inhibit. We will repeat this experiment and confirm the finding.

Unlike complicated result of *Rce1* inactivation, *Icmt* inactivation significantly mitigated BCR-ABL leukemogenesis (Figure 2). This result suggests that *Icmt* plays an critical role in BCR-ABL leukemogenesis and that *Icmt* may be an effective target for developing CML therapeutics.

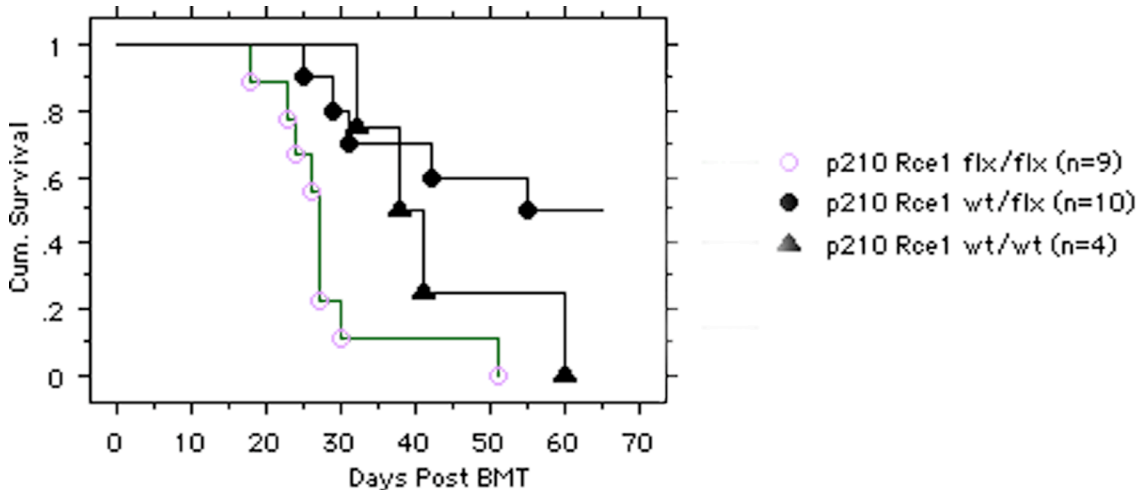


Figure 1. Survival of mice receiving transplantation of *BCR-ABL* transduced BM cells from pI-pC-induced *Rce1*^{flx/flx}/Mx1-Cre, *Rce1*^{flx/+}/Mx1-Cre, *Rce1*^{+/+}/Mx1-Cre mice. Survival curves were generated by Kaplan-Meier survival analysis. The number (n) of mice for each group is indicated.

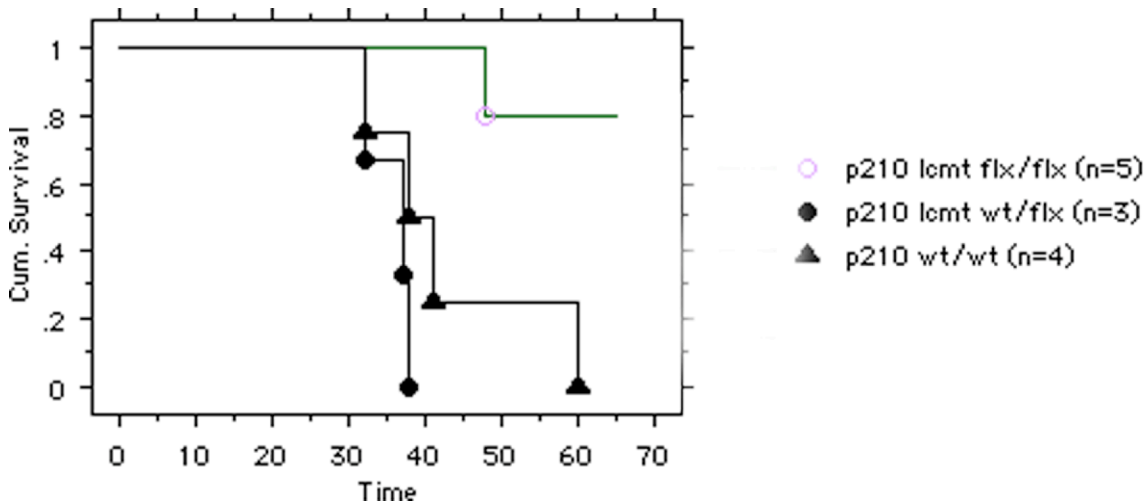


Figure 2. Survival of mice receiving transplantation of *BCR/ABL* transduced BM cells from pI-pC-induced *Icmt*^{flx/flx}/Mx1-Cre, *Icmt*^{flx/+}/Mx1-Cre, *Icmt*^{+/+}/Mx1-Cre mice. Survival curves were generated by Kaplan-Meier survival analysis. The unit of time is days post-BM transplantation. The number (n) of mice for each group is indicated.

Since *Icmt* and *Rce1* are important for BCR-ABL leukemogenesis, we will generate MCSV-*BCR-ABL*/gfp-IRES-*Icmt* and MCSV-*BCR-ABL*/gfp-IRES-*Rce1* bicistronic retroviral constructs (Task 2) to examine whether the transforming potential of

BCR-ABL could be rescued by coexpressing Icmt or Rce1 (Task 4). We are currently performing the in vitro BCR-ABL transformation assay (factor independent bone marrow colony assay) as planned in Task 3.

3. (Related to Tasks 5 and 9). In addition to Ras proteins, a broad class of proteins, many of which are also involved in cellular regulatory processes that are important for tumor formation, are also substrates of Rce1 and Icmt. Rce1 and Icmt may affect BCR-ABL leukemogenesis through Ras proteins and/or other targets of the enzymes. Myristoylated Ras would help to evaluate whether the effect Rce1 deficiency on BCR-ABL leukemogenesis is primarily through Ras, but it does not directly testing the Rce1 and Icmt mediated Ras modifications. We have previously found that the Grb2 SH2 binding site Y177 of BCR-ABL, the major mediator of BCR-ABL inactivating Ras, is required for the induction of CML-like disease by BCR-ABL. Recently we further show that oncogenic Ras can rescue the defect of the Y177F mutant BCR-ABL in the induction of CML-like disease. We will use this system to examine the importance of Ras modifications in BCR-ABL leukogenesis. To this end, we have generated an A2 (the second aliphatic residue in the CAAX motif) mutant of NRASD12 for testing the importance of removal of the AAX tripeptide and methylation of the terminal farnesylated cysteine residue in a different way (this would avoid complications of targeting proteins other than RAS). The A2 residue has been shown to be important for the AAX peptide cleavage and methylation.

Key research accomplishment

- We have generated Rce1^{flx/flx} or Icmt^{flx/flx} mice, as well as Rce1^{flx/+}, Icmt^{flx/+}, Rce1^{+/+}, or Icmt^{+/+} control mice harboring the Mx1-Cre transgene.
- We have found that Icmt plays a critical role in BCR-ABL leukemogenesis. This finding suggests that Icmt may be an effective target for developing CML therapeutics.
- We have found that the role of Rce1 in BCR-ABL leukemogenesis is dosage dependent.

Reportable outcomes

Not yet.

Conclusion

Our results show that Icmt plays an important role in the pathogenesis of CML and suggest that this enzyme is an effective target for developing CML therapies. Our results also show that the role of Rce1 in BCR-ABL leukemogenesis is dosage dependent.

References

NA

Appendices

NA