

**Clothe The Soldier Prototype Modular Load Carriage System
Design Assessment using the APLCS Load Carriage Simulator**

by

J. M. Stevenson, J. T. Bryant, J. Doan,
W. A. Rigby & S.A. Reid

Ergonomics Research Group & Clinical Mechanics Group
Queen's University
Kingston, Ontario, Canada
K7L 3N6

Project Manager:

Susan A. Reid
(613) 533-2658

PWGSC Contract No. W7711-8-7414/001/SRV

On behalf of
DEPARTMENT OF NATIONAL DEFENCE

As represented by
Defence Research and Development Canada - Toronto
1133 Sheppard Ave West
PO Box 2000
Toronto, Ontario, Canada
M3M 3B9

Scientific Authority:
Maj Linda Bossi
Operational Human Engineering Group
(416) 635-2197

March 2006

The scientific or technical validity of this Contract Report is entirely the responsibility of the contractor and the contents do not necessarily have the approval or endorsement of Defence R&D Canada

© Her Majesty the Queen as represented by the Minister of National Defence, 2006

© Sa Majesté la Reine, représentée par le ministre de la Défense nationale, 2006

Abstract

The objective of this study was to conduct a standardized assessment of the CTS prototype modular (M1) pack on a computerized Load Carriage (LC) Simulator. Specifically, the LC Simulator measured variables which assess load control and load transfer capability of the M1 pack. These aspects of pack design were comprised of several displacement, force, moment and pressure variables that had been validated on previously tested systems where LC Simulator outputs were compared to assessments by experienced users during human trials.

A trial consisted of measuring inertial properties and dimensions, loading the pack to a 25 kg payload, mounting the pack and balancing the moments. Five intervals of 10 seconds of data were recorded over a 1200 second period. Output variables were: three dimensional motions of the pack's center of gravity relative to the person's motion; forces and moments from a three dimensional load cell at the level of the hips; skin average pressures, peak pressures and skin forces over the anterior and posterior shoulders, and upper and lower back. Pack resistance to flexion/extension, lateral bending and torsion were also evaluated through a set protocol. For load control, the CTS M1 pack ranked as average in side to side (x) and resultant (r), superior in up and down (z), and inferior in transverse (y) relative pack-person motions. All other load control variables were not significantly different from other systems. For load transfer, the M1 pack was superior for dampening average forces in the transverse direction (y) but inferior in the vertical (z) direction. Inferior force amplitude values were also seen in the y direction. The CTS Prototype Pack M1 did maintain transverse lumbar forces at an acceptable level (36.1 N). This value is well below the recommended design limit for transverse force on the lumbar spine (135 N). The CTS Prototype Pack M1 showed typical stiffness characteristics in torsion and in sideways bending. It also demonstrated very low forward flexion stiffness. Low stiffness in flexion has been shown to be correlated to good combined functional ratings where large movements are required, reduced posterior neck discomfort and reduced lower back discomfort.

Résumé

Le but de la présente étude était de mener une évaluation standardisée du prototype de sac à dos modulaire HLS (M1) sur un simulateur de transport de charge informatisé. En particulier, le simulateur a mesuré des variables qui évaluent le contrôle et le transfert de la charge du sac à dos M1. Ces aspects de la conception du sac à dos comprenaient plusieurs variables de mouvement, de force, de moment et de pression qui avaient été validées sur des systèmes déjà mis à l'épreuve où les résultats du simulateur de transport de charge étaient comparés aux évaluations faites par des utilisateurs expérimentés lors d'essais avec des humains.

Un essai consistait à mesurer les propriétés d'inertie et de dimensions avec une charge utile de 25 kg sur le sac à dos, en montant ce sac à dos et en équilibrant ses moments. Cinq intervalles de 10 secondes de données ont été enregistrés pendant une période de 1 200 secondes. Les variables de sortie étaient les suivantes : mouvements sur trois dimensions du centre de gravité du sac à dos par rapport aux mouvements de la personne; les forces et les moments par rapport à une cellule dynamométrique tridimensionnelle au niveau des hanches; pressions moyennes sur la peau, pressions de crête et forces sur l'avant et l'arrière des épaules, ainsi que le sac supérieur et inférieur. La résistance du sac à dos à la flexion/extension, la flexion latérale et la torsion ont également fait l'objet d'une évaluation dans le cadre d'un protocole bien défini.

En ce qui concerne le contrôle de la charge, le sac à dos CTS M1 a obtenu une note moyenne pour les mouvements d'un côté à l'autre (x) et la résultante (r), une note supérieure pour les mouvements verticaux (z) et une note inférieure pour les mouvements transversaux (y) quant aux mouvements relatifs entre le sac à dos et une personne. Les autres variables de contrôle de charge ne présentaient aucune différence sensible par rapport aux autres systèmes. En ce qui concerne le transfert de charge, le sac à dos M1 s'est révélé supérieur pour amortir les forces moyennes sur le plan transversal (y), mais inférieur sur le plan vertical (z). On a également relevé des valeurs d'amplitude de force inférieures sur le plan y. Le prototype de sac à dos M1 HLS maintenait les forces lombaires transversales à un niveau acceptable (36,1 N). Cette valeur est très inférieure à la limite nominale recommandée pour les forces transversales sur le rachis lombaire (135 N). Ce prototype de sac à dos M1 HLS a démontré des caractéristiques de rigidité typiques pour la torsion et la flexion latérale. Il a également démontré une rigidité en flexion faible vers l'avant. Cette rigidité en flexion faible s'est avérée correspondre à un bon taux

de fonctionnalité lorsque des mouvements à grande amplitude sont nécessaires, ainsi qu'à une réduction de l'inconfort à l'arrière du cou et au bas du dos.

Executive Summary

The objective of this study was to conduct a standardized assessment of the CTS prototype modular (M1) pack on a computerized Load Carriage (LC) Simulator. Specifically, the LC Simulator measured variables which assess load control and load transfer capability of the M1 pack. These aspects of pack design were comprised of several displacement, force, moment and pressure variables that had been validated on previously tested systems where LC Simulator outputs were compared to assessments by experienced users during human trials.

The LC Simulator consisted of interchangeable anthropometrically weighted mannikins (50th percentile male used) which were covered with a skin-like surface, driven by computer controlled pneumatic activators programmed to elicit a walking displacement pattern of ± 25.4 mm amplitude and 1.8 Hz frequency. A trial consisted of measuring inertial properties and dimensions, loading the pack to a 25 kg payload, mounting the pack and balancing the moments. Five intervals of 10 seconds of data were recorded over a 1200 second period. By this approach, the pack was assessed on the initial setup and after a sustained period of walking. Output variables were: three dimensional motions of the pack's center of gravity relative to the person's motion; forces and moments from a three dimensional load cell at the level of the hips; skin average pressures, peak pressures and skin forces over the anterior and posterior shoulders, and upper and lower back.

To examine the resistance of the pack frame to load control motions in three planes, a LC Compliance tester was developed. The Compliance tester consisted of a two-piece anatomical human trunk model (50th percentile male) which was designed to limit responses to one plane of motion at a time. Using a load cell and multi-turn precision potentiometer, pack resistance to flexion/extension, lateral bending and torsion were evaluated through a set protocol.

The CTS Prototype Pack M1 was compared to previously validated variables for load control and load balance from the LC Simulator. Results were expressed in comparison to the mean value, superior decile (best 10%) and inferior decile (worst 10%) values. For load control, the CTS M1 pack ranked as average in side to side (x) and resultant (r), superior in up and down (z), and inferior in transverse (y) relative pack-person motions. All other load control variables were not significantly different from other systems. For load transfer, the M1 pack was superior for dampening average forces in the transverse direction (y) but inferior in the vertical (z)

direction. Inferior force amplitude values were also seen in the y direction. The CTS Prototype Pack M1 did maintain transverse lumbar forces at an acceptable level (36.1 N). This value is well below the recommended design limit for transverse force on the lumbar spine (135 N). The CTS Prototype Pack M1 showed typical stiffness characteristics in torsion and in sideways bending. It also demonstrated very low forward flexion stiffness. Low stiffness in flexion has been shown to be correlated to good combined functional ratings where large movements are required, reduced posterior neck discomfort and reduced lower back discomfort.

Sommaire

Le but de la présente étude était de mener une évaluation standardisée du prototype de sac à dos modulaire HLS (M1) sur un simulateur de transport de charge informatisé. En particulier, le simulateur a mesuré des variables qui évaluent le contrôle et le transfert de la charge du sac à dos M1. Ces aspects de la conception du sac à dos comprenaient plusieurs variables de mouvement, de force, de moment et de pression qui avaient été validées sur des systèmes déjà mis à l'épreuve où les résultats du simulateur de transport de charge étaient comparés aux évaluations faites par des utilisateurs expérimentés lors d'essais avec des humains.

Le simulateur de contrôle de charge consistait en mannequins lestés de manière anthropométrique (modèle utilisé correspondant au 50^e percentile des hommes), munis d'une surface pelliculaire et contrôlés par des actionneurs pneumatiques qui sont commandés par ordinateur et programmés pour susciter un schéma de marche d'une amplitude de $\pm 25,4$ mm et d'une fréquence de 1,8 Hz. Un essai consistait à mesurer les propriétés d'inertie et de dimensions avec une charge utile de 25 kg sur le sac à dos, en montant ce sac à dos et en équilibrant ses moments. Cinq intervalles de 10 secondes de données ont été enregistrés pendant une période de 1 200 secondes. On évaluait de cette manière le sac à dos sur le montage initial et au bout d'une période soutenue de marche. Les variables de sortie étaient les suivantes : mouvements sur trois dimensions du centre de gravité du sac à dos par rapport aux mouvements de la personne; les forces et les moments par rapport à une cellule dynamométrique tridimensionnelle au niveau des hanches; pressions moyennes sur la peau, pressions de crête et forces sur l'avant et l'arrière des épaules, ainsi que le haut et le bas du dos.

Pour examiner la résistance de l'armature externe du sac à dos afin de contrôler les mouvements de la charge sur trois plans, on a mis au point une unité de vérification de la conformité de transport de charge. Cette unité se composait d'un modèle anatomique de tronc humain (correspondant au 50^e percentile des hommes) qui était conçu pour limiter les réactions sur un plan de mouvement à la fois. À l'aide d'une cellule dynamométrique et d'un potentiomètre multi tours de précision, la résistance du sac à dos à la flexion/extension, la flexion latérale et la torsion ont également fait l'objet d'une évaluation dans le cadre d'un protocole bien défini.

Le prototype de sac à dos M1 HLS a été comparé à des variables déjà validées pour le contrôle l'équilibre de la charge sur le simulateur de contrôle de charge. Les résultats ont été exprimés par comparaison à la valeur moyenne, et aux valeurs déciles supérieures (le décile le plus élevé) et inférieures (le décile le plus faible). En ce qui concerne le contrôle de la charge, le sac à dos CTS M1 a obtenu une note moyenne pour les mouvements d'un côté à l'autre (x) et la résultante (r), une note supérieure pour les mouvements verticaux (z) et une note inférieure pour les mouvements transversaux (y) quant aux mouvements relatifs entre le sac à dos et une personne. Les autres variables de contrôle de charge ne présentaient aucune différence sensible par rapport aux autres systèmes. En ce qui concerne le transfert de charge, le sac à dos M1 s'est révélé supérieur pour amortir les forces moyennes sur le plan transversal (y), mais inférieur sur le plan vertical (z). On a également relevé des valeurs d'amplitude de force inférieures sur le plan y. Le prototype de sac à dos M1 HLS maintenait les forces lombaires transversales à un niveau acceptable (36,1 N). Cette valeur est très inférieure à la limite nominale recommandée pour les forces transversales sur le rachis lombaire (135 N). Ce prototype de sac à dos M1 HLS a démontré des caractéristiques de rigidité typiques pour la torsion et la flexion latérale. Il a également démontré une rigidité en flexion faible vers l'avant. Cette rigidité en flexion faible s'est avérée correspondre à un bon taux de fonctionnalité lorsque des mouvements à grande amplitude sont nécessaires, ainsi qu'à une réduction de l'inconfort à l'arrière du cou et au bas du dos.

Table of Contents

Abstract.....	i
Résumé.....	ii
Executive Summary	iv
Sommaire	vi
Table of Contents.....	viii
List of Figures	ix
List of Tables	ix
1.0 Scope of Report.....	1
1.1 Objectives of Test	1
1.2 System Evaluated.....	1
2.0 Methods.....	2
2.1 LC Simulator.....	2
2.1.1 Torso Specifications and Preparation	2
2.1.2 LC System Loading and Mass Properties.....	2
2.1.3 Test Protocol	4
2.1.4 Strap Forces	4
2.1.5 Relative Displacement of LC System and Torso.....	5
2.1.6 Reaction Forces and Moments.....	6
2.1.7 Skin Contact Pressure	7
2.2 Compliance - Stiffness Testing Jig	9
2.2.1 Torso Specification and Preparation.....	9
2.2.2 Test Protocol	9
2.2.3 Torsional Stiffness	10
2.2.4 Forward and Lateral Bending Stiffness	10
3.0 Results.....	12
3.1 LC Simulator - Displacements and Forces	12
3.1.1 Strap Forces	12
3.1.2 Displacements.....	12
3.1.3 Reaction Forces.....	13
3.1.4 Reaction Moments	14
3.2 LC Simulator - Pressure Measurements	15
3.3 Compliance - Stiffness Testing.....	22
4.0 Discussion.....	26
4.1 Comparison to Threshold Limit Values.....	26
4.1.1 Average Contact Pressures.	26
4.1.2 Peak Contact Pressures	26
4.2 Comparison to Current Benchmarks.....	26
4.2.1 Current Benchmark Pool.....	27
4.2.2 Comparison Variables.....	28
4.2.3 Benchmark Comparisons	29
4.3 Design Considerations	33
4.3.1 Load Control	33

4.3.2 Load Transfer.....	34
5.0 Conclusions and Recommendations	37
5.1 Conclusions.....	37
5.2 Recommendations.....	38
6.0 Reservations.....	38
7.0 Acknowledgments.....	39
8.0 References.....	40
Annex A - Test Results for CTS Prototype Pack M1	A-1

List of Figures

Figure 1	Photograph of CTS Prototype Pack M1 positioned on LC simulator mannikin.....	5
Figure 2	LC Simulator mannikin, with F-Scan™ pressure sensors in place.....	8
Figure 3	Pressure map for anterior shoulder.	17
Figure 4	Pressure map for posterior shoulder.	18
Figure 5	Pressure map for upper lumbar region.....	19
Figure 6	Pressure map for lower lumbar region.....	20
Figure 7	Pressure map for iliac (hip) region.....	21
Figure 8	Torsional moment as a function of angle.....	23
Figure 9	Lateral bending moment as a function of angle.....	24
Figure 10	Forward bending moment as a function of angle.....	25

List of Tables

Table 1	Mass properties of load carriage system.	3
Table 2	Shoulder strap and waist belt tension for the CTS Prototype Pack M1.....	12
Table 3	Relative displacement between pack and torso.	13
Table 4	Reaction forces for LC system testing.	13
Table 5	Reaction forces for LC system testing.	14
Table 6	Reaction moments for CTS Prototype Pack M1 testing.	14
Table 7	Reaction moments for CTS Prototype Pack M1 testing.	15
Table 8	Pressure measurement results for the CTS Prototype Pack M1.	15
Table 9	Stiffness and initial resistance values for testing of the CTS Prototype Pack system	22

1.0 Scope of Report

1.1 Objectives of Test

The two main areas of interest when investigating load carriage are load control and load transfer. Proper load control is necessary for the user to maintain balance and mobility during load carriage. Relative displacement between user and load carriage system, rotational moments generated during load carriage, and resistance of the LC system to deflections within the range of human motion, are quantification tools used to define the load control ability of a load carriage system. Capacity for load carriage, muscle fatigue during carriage, and risk of tissue injury are all dependent on load transfer to the user. Measurement of skin contact pressures, specifically in significant load bearing areas, and forces applied by the load allows for an increased understanding of load transfer in LC systems.

1.2 System Evaluated

Testing of the CTS Prototype Pack M1, performed by the Ergonomics Research Group at Queen's University, included measurement of the following variables:

1. Shoulder strap and waist belt tension.
2. Relative displacement between LC system and torso.
3. Hip reaction forces.
4. Hip reaction moments.
5. Skin contact pressures in five regions.
6. Torsional pack stiffness.
7. Lateral pack stiffness.

Comparison of the results from previous LC system tests with those of the CTS Prototype Pack M1 was also performed, allowing for comparison of design features and evaluation of system strong points.

2.0 Methods

2.1 LC Simulator

2.1.1 Torso Specifications and Preparation

A family of four anthropometric mannikins (5th and 50th percentile females, and 50th and 95th percentile males, as defined by Safework™ anthropometric software) were constructed for LC simulator testing. Each mannikin was comprised of a head and trunk section, with arms truncated in the mid-humeral region and legs extending to just below the buttocks.

These human models consisted of a fibreglass outer shell with an expandable poured polyurethane foam filling. Proper mass distribution was achieved by thoroughly mixing aggregate with the interior foam. A vertical cylindrical cavity was created in each mannikin to allow for mounting of a 6 degree-of-freedom load cell. In each case, the neutral axis of the load cell was positioned at the approximate location of the mannikin's hips. This load cell was further mounted on a single axis articulating vice, which permitted the mannikin and LC system to be placed in a balanced anterior body lean position for load carriage. Finally, the surface of each mannikin was covered with a 5 mm thickness of Bocklite™, a synthetic skin-like material used on prosthetics, to approximate the compressive response of human skin over bone. For all tests, the mannikin was dressed in a Canadian Forces standard issue combat shirt.

2.1.2 LC System Loading and Mass Properties

LC payload was created by locating a block of mass at the center of the system volume. The mass used in the LC system was 25 kg +/- 1 kg and was comprised of rectangular steel plates. These plates were held in position by a rigid polystyrene foam shell which filled the LC volume. Three dimensional location of the LC system center of gravity and LC system moments of inertia about the three pack axes are available in Table 1 for the pack with payload. Mass of the pack, unloaded and loaded, is also included.

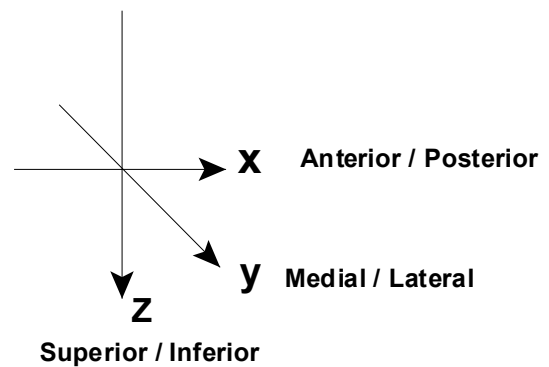
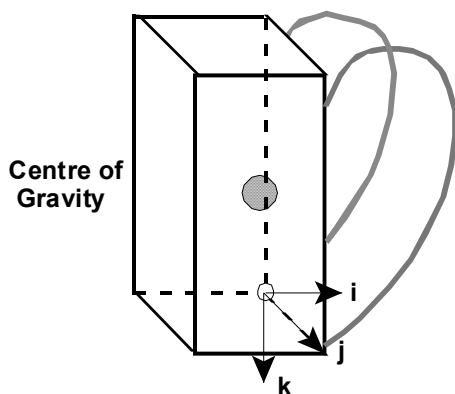
Table 1 Mass properties of load carriage system.

Load Carriage System : CTS Prototype Pack M1

Mass:	LC System only	4.8	(kg)
	LC System w/ load	30.6	
Physical Size:	Length (k)	660	(mm)
	Width (j)	380	
	Depth (i)	290	
Center of Gravity*:	Height (k)	308.2	(mm)
	Width (j)	183	
	Depth (i)	150	

* - all C of G measurements are relative to the lower left corner of the pack as it is worn.

Total mass for both the unloaded and the loaded LC system, location of the center of gravity in three dimensions, and the physical dimensions of the LC system are all included.



2.1.3 Test Protocol

The LC Simulator (Figure 1) consists of the previously described rigid mannikin, mounted on a programmable displacement platform. This platform rests on three air cylinders which allow vertical motion as well as rotation about the x (anterior/posterior) and y (medial/lateral) axes. A computer controlled vertical displacement pattern (+/- 25.4 mm amplitude, 1.8 Hz frequency) simulated marching, and linear displacement transducers provided positional information for the control system. Feedback control was accomplished by varying the differential pressure across each cylinder face.

The duration of one LC System test was 1200 seconds, with data recorded at 10 seconds (initial data set), and at each 300 second interval. Sampling rate for all data collection was 55 Hz and the duration was 10 seconds (minimum). The outcome measures from the LC system tests consisted of the relative displacement between mannikin and marching order system, skin contact pressures on the shoulders, upper back, and lower back, and hip reaction forces and moments. The following sections describe the methodology and instrumentation used to collect LC System characteristic data.

2.1.4 Strap Forces

During the setup phase of the LC Simulator testing, strap force tension transducers were placed in-line in the right lower shoulder strap and the right half of the waist belt, free of any hip/kidney padding. Attachment of the transducers was accomplished by placing a pin through an attachment ring in the end of the carrier material of each transducer, ensuring that all tension in the strap was transmitted through the transducer. Output from the force transducers was received and amplified by a Keithley MetraByte DATAQ system (Keithley MetraByte Instruments Incorporated). Initial settings of 55 +/- 5 N in the shoulder strap and 40 +/- 5 N in the waist strap were used for all load carriage trials.

The force transducers were constructed with four foil style strain gauges, attached in a full Wheatstone bridge configuration to a rounded I-shaped 6061-T6 aluminum carrier with a length of 38.00 mm and thickness of 1.14 mm. Static testing of the transducers showed they were highly linear ($r^2 > 0.9995$) with a small standard error (< 0.01 V) (Reference A).



Figure 1 Photograph of CTS Prototype Pack M1 positioned on LC simulator mannikin.

2.1.5 Relative Displacement of LC System and Torso

An electromagnetic position tracking system (Fastrak™ by Polhemus Incorporated) was used to provide three dimensional displacement data. The source for the Fastrak™ was affixed with nylon screws to the underside of the left arm of the mannikin. A Fastrak™ sensor was also attached in a secure position to the superior polystyrene surface of the LC System payload. Displacement data, for the payload with respect to the source, was recorded for 10 seconds at 55 Hz every 300 seconds over the duration of the test. Translation from the superior payload

sensor location to the loaded pack centre of gravity was performed to provide estimated displacement vectors between the centre of gravity of the loaded LC system and the mannikin.

Increased displacement of the LC system, with respect to the soldier, can cause decreased agility due to reduced load control. Unrestrained displacement of marching order kit and LC equipment also leads to stability problems and local discomfort due to repeated collisions between the soldier and items.

Direct comparison of Fastrak™ positional data with data collected from an opto-electric positional recording system (Optotrak™ by Northern Digital Incorporated) with high precision (RMS error <0.01 mm) provided an RMS error for Fastrak™ data of 0.65 mm.

2.1.6 Reaction Forces and Moments

Ground reaction forces and moments were collected using a 6 degree-of-freedom load cell (AMTI Incorporated) based on a body fixed coordinate system located at the hip and oriented along the long axis of the trunk. The outcomes from this instrumentation were reported as a resultant mean force (N), in which reaction forces in the Fx (forward and back), Fy (side to side), and Fz (up and down) were combined vectorially. Similarly, a resultant mean moment (Nm) was defined in which the moments Mx (lateral), My (flexion/extension), and Mz (torsional) were components. Two factors affect the moments and forces transmitted through the load cell: motion and mass of the moving bodies. In the LC simulator, the mass of the torso requires a significant reaction under the imposed displacement from the positioning actuators. This is in addition to the reactions needed to move the payload itself. To compensate for these effects, a two-step procedure is used. First, an initial run of the 50th percentile male mannikin with no load carriage system in place is used to generate a baseline of reaction moments and forces. These values are then subtracted from the results of a run in which a load carriage system is being evaluated.

The second step is to normalize the reaction values by dividing them by the total payload of the system. The payload is the sum of the pack load, the weight of the pack itself, the weight of additional load carriage devices (such as webbing or vests), and the weight of clothing.

The resultant *normalized* values are expressed as Nm/kg for moments and N/kg for forces. This method of normalization is typical for biomechanical measurements. A normalized force of 9.81 N/kg indicates a force of 9.81 newtons acts for each kilogram of load carried. This is equivalent to the weight of the payload and is sometimes expressed “1 x Payload Weight”. A normalized force of 12.2 N/kg, for example, would be expressed as $12.2/9.81 = 1.24 \times \text{Payload Weight}$.

Reaction forces represent the force which a person must provide at the hip to counter balance any off center forces resulting from the load carriage system and contents. Similarly, the net reaction moments reflect the magnitude of counter balancing needed by muscles above the hips to offset any rotation created during normal gait, or by the forcing function of the simulator. In both cases, the greater the muscle force needed to maintain balance, the greater the soldier fatigue, both locally and overall, leading to discomfort and pain.

2.1.7 Skin Contact Pressure

An F-ScanTM pressure sensor system (Tekscan Inc.) was used to acquire contact pressure data on the mannikin skin over the anterior shoulder and posterior scapula areas, as well as in the lower back region. Figure 2 shows the location of the F-ScanTM 9810 pressure sensors, which were affixed to the mannikin with a non-permanent spray adhesive. The F-ScanTM system uses a matrix of force sensitive resistors, arranged in a rectangular pattern and contained between two flexible polyester sheets. At full size there are 96 force sensitive resistors, covering a region 206 mm by 76 mm. When an element is compressed, the voltage passed across the element changes. This change is sensed by system software, and is recorded as a load normal to the sensor surface, based on calibration for each sensor. This information can be replayed in ‘movie’ format, which can give a dynamic measurement of force, average and peak pressures, active area, or duration of contact. Previous testing at Queen’s (DCIEM Contract #W7711-4-7225/01-XSE) has found the F-ScanTM system standard error of the mean to be 9.6 % for average pressures and 14 % for peak pressures. Also, use of the sensors on a curved surface leads to a 9% standard error of the mean for average pressure results (Reference B).

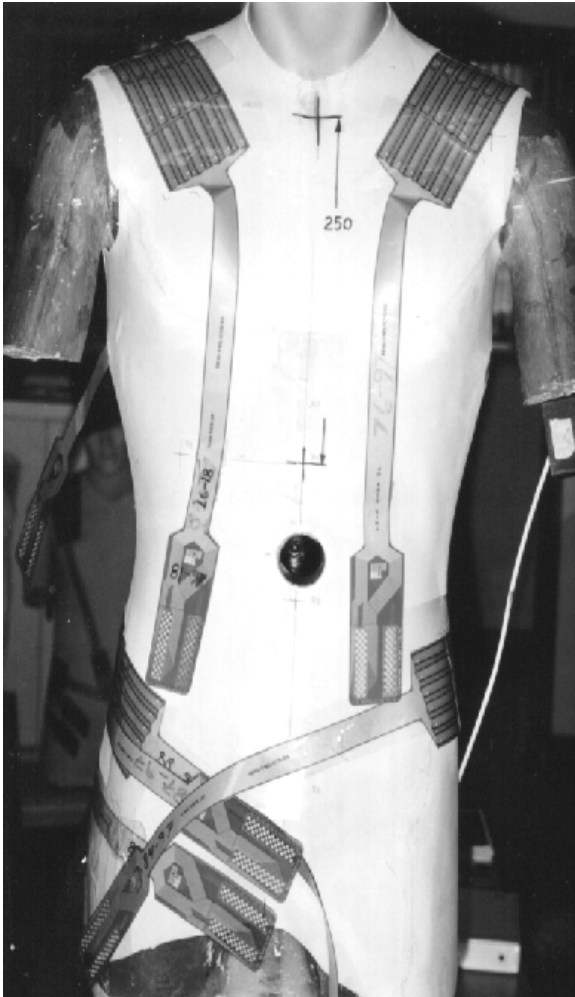


Figure 2 LC Simulator mannikin, with F-Scan™ pressure sensors in place.

For LC system testing, pressure data were reported in terms of peak dynamic pressures and average pressure over all active cells of the sensors in the anatomical areas of interest; anterior shoulder, posterior shoulder (scapula), hip, and lower back. Research has shown that blood occlusion can occur when tissues are loaded at an average pressure of 14 kPa for 8 hours (Reference C). Average skin contact pressures of 20 kPa have also been associated with discomfort in 95 % of a test sample.

2.2 Compliance - Stiffness Testing Jig

2.2.1 Torso Specification and Preparation

A pack stiffness test jig was developed to allow the placement of each load carriage system onto a two-piece anatomical human trunk model (50th percentile male). The model was custom-fitted with a layer of compliant synthetic skin, 5mm thick Bocklite. The upper torso portion of the model was free to rotate about a horizontal axis (y-axis for forward bending or x-axis for sideways bending) on two oil impregnated metal powder sintered bearings at the L3/L4 location of the human spine, or about the vertical axis (z-axis for torsional twisting) on a thrust bearing at the L4/L5 location. Only one degree of freedom was active for each type of test, with the other degrees of freedom mechanically locked. The lower waist portion of the model was rigidly fixed in an upright standing position to the steel support frame.

2.2.2 Test Protocol

Empty load carriage systems were used in this test to generate baseline LC system stiffness values, without the increased pack stiffness due to kit items. Each pack was placed in position on the model and all straps were securely fastened. Using in-line force transducers, the shoulder straps and the hip/waist strap were pre-tensioned to 55 N and 40 N respectively, the same settings were used in the load carriage simulator tests.

During each test run, analog signals from the two load cells and two potentiometers were captured using a data acquisition system (Keithley MetraByte Instruments Incorporated) in a portable personal computer at a sampling rate of 5Hz over a three minute period. Each data set was saved electronically on the hard drive for post-processing. A spreadsheet was used to post-process the data, each data set was partitioned into the first cycle and repeated cycles. Only the loading phase of each test cycle was analyzed. Load cell data was filtered first by averaging over a one or two degree intervals of rotation and further averaged over two to four repeated test runs. For the forward and sideways bending tests, the upper torso displayed an apparent resistance against the bending motions. Baseline reference tests were established for the setup (upper torso without pack or clothing equipment) and a baseline correction was

applied to the data sets by subtraction. For the torsional twisting tests, upper torso response had an insignificant effect on the torque transducer output and the baseline correction was not applied. The information was reduced to bending moments or torque about the hinge in Nm and relative rotation in degrees to produce characteristic moment-rotation curves for each pack configuration. Linear regressions were performed on each LC system data set to obtain an aggregate pack stiffness (slope of linear regression).

2.2.3 Torsional Stiffness

For the torsional twisting tests, load/torque was applied in the form of a horizontal force acting on a moment arm of 0.137m. This was achieved by means of a cable wrapped around a 0.273m diameter pulley on the overhead load transfer assembly (LTA). A modified trailer winch (Fulton Performance Products Incorporated) fitted with a multi-turn precision potentiometer (Bourns Electronics) was used to generate and measure rotation of the upper torso relative to the waist section of the trunk model. A strain gauged torsion load cell was installed on the drive shaft to measure pack resistance against such rotations. Studies have shown that the average relative angle of twist during walking is approximately 18 degrees full scale which is ± 9 degrees about the neutral axis (Reference D). A value of 12 degrees from neutral was used as the maximum for testing. Load was applied manually with the trailer winch in a 60 seconds test cycle (25s ramp up, 10s hold, 15s ramp down, and 10s hold) in order to minimize inertial loads from the trunk model. Each test included three test cycles before adjustments were made to the setup (straighten clothing, tighten straps, position pack) and testing was repeated to ensure reproducibility.

2.2.4 Forward and Lateral Bending Stiffness

Load/moment was applied in the form of a horizontal force acting on a moment arm of 0.927m. This was achieved by means of two opposing cables attached to the LTA on a roller track. Each cable was pre-tensioned by a 5 kg mass to maintain proper alignment. An in-line tension transducer, similar to those used in the measurement of strap forces during LC simulator testing, was installed between the loading cable and the LTA to measure cable tension

fluctuations during each load cycle. A second trailer winch fitted with a potentiometer was used to induce and measure the horizontal displacement of the LTA. Maximum excursion of the LTA was 1.035m resulting in a forward bending angle of 48 degrees. For the lateral bending tests, the anatomical trunk model was rotated 90 degrees vertically about the base while keeping the bearing assembly in its original orientation with respect to the LTA. For the lateral bending tests, excursion of the LTA was reduced to a maximum of 0.305m, resulting in a maximum sideways bending angle of 18 degrees. The normal range expected during walking/marching gait is about 2-7 degrees (Reference D).

3.0 Results

3.1 LC Simulator - Displacements and Forces

3.1.1 Strap Forces

The mean tension for the lower right shoulder strap and the right waist belt for one test with the CTS Prototype Pack M1 are presented in Table 2. The full data set for one trial is included in Annex A.

Table 2 Shoulder strap and waist belt tension for the CTS Prototype Pack M1. The mean tension in these two suspension elements, along with the standard deviation, is presented.

	Tension (N)	SD (N)
Shoulder Strap	80	16
Waist Belt	46	7

3.1.2 Displacements

The relative displacement data for the LC System is available in Table 3. Annex A contains the entire data set for the test trial. Range is defined as the difference between the minimum and maximum displacement, in one axis, measured over a 10 second sampling interval.

Table 3 Relative displacement between pack and torso.

	Range (mm)	SD (mm)
X	1.6	0.31
Y	7.7	1.97
Z	5.1	1.27
R	9.4	2.36

Motions in x, y, and z directions were combined vectorially to produce a resultant displacement. Ranges and corresponding standard deviations are indicated.

3.1.3 Reaction Forces

Tables 4 & 5 contains the mean normalized reaction forces, as well as mean total reaction forces and standard deviations in all three axis, for one test trial with the CTS Prototype Pack M1. The full data set is also available in Annex A.

Table 4 Reaction forces for LC system testing.

	Normalized Force (N/kg)	Force (N)	SD (N)
X	7.3	225	43
Y	0	-1	16
Z	9.6	826	286
R	12.1	856.1	289.7

Mean normalized forces, total forces, and standard deviations for one trial are presented. Resultant moment (R) was the vectorial combination of the axial moments.

Table 5 Reaction forces for LC system testing.

	Normalized Force Amplitude (N/kg)	Mean Force Amplitude (N)
X	2.7	84
Y	0.9	29
Z	7.4	491
R	7.9	499

Normalized and Mean force amplitudes.

3.1.4 Reaction Moments

Tables 6 & 7 contain the average normalized reaction moments, in all three axis, for one test trial with the CTS Prototype Pack M1. Total reaction forces and standard deviations are included in the table, and Annex A contains the full data set for the trial.

Table 6 Reaction moments for CTS Prototype Pack M1 testing.

Mean normalized moment, mean reaction moment, and standard deviation are presented in all three dimensions. Resultant moment (R) was the vectorial combination of the axial moments.

	Mean Normalized Moment (N.m/kg)	Mean Reaction Moment (N.m)	SD (N.m)
X	0	-1	9
Y	-0.2	-7	24
Z	0	-1	8
R	0.2	7.1	26.9

Table 7 Reaction moments for CTS Prototype Pack M1 testing.

	Normalized Moment Amplitude (N.m/kg)	Mean Moment Amplitude (N.m)
X	0.3	9.5
Y	1.4	41.5
Z	0.2	5.5
R	1.4	42.9

3.2 LC Simulator - Pressure Measurements

The results of pressure measurements made with the F-Scan™ during the testing of the CTS Prototype Pack M1 system, in the anatomical locations outlined in Section 2.1.7, can be found in Table 8. The information presented consists of the average pressure for one recording sample (10 seconds), the peak pressure experienced during this sample, the ratio of peak pressure to average pressure (pressure differential index (PDI)), the force experienced by the wearer in these areas, and the total contact at that location.

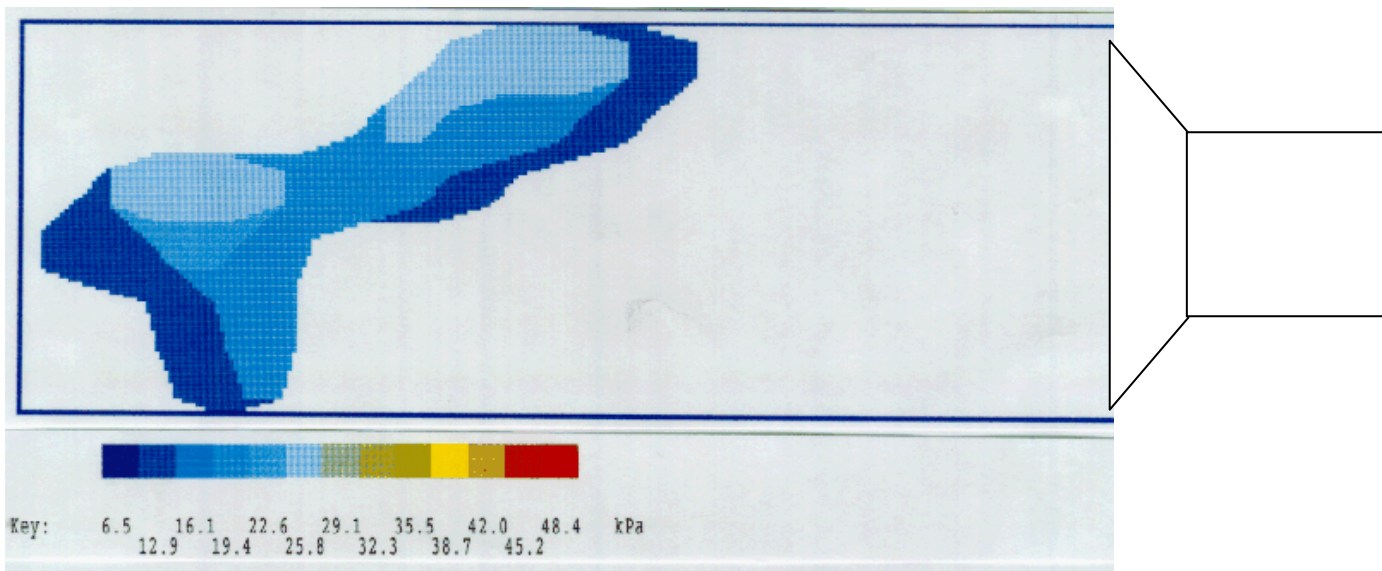
Table 8 Pressure measurement results for the CTS Prototype Pack M1.

Average and peak pressure, peak to average pressure differential ratio (PDI), contact force and area, for one sample period during a dynamic LC Sim trial. Accuracy of the FScan sensors is +/-14 kPa (Reference B)

	Average Pressure (kPa)	Peak Pressure (kPa)	PDI	Force (N)	Area (cm²)
Anterior Shoulder	19.5	39.3	2	72.3	37.1
Posterior Shoulder	n/a*	n/a*	n/a*	n/a*	n/a*
Upper Lumbar	14.9	19.4	1.3	36.1	24.2
Lower Lumbar	15.5	24.1	1.6	30.1	19.4
Iliac Crest	13.1	15.4	1.2	12.7	9.7

* - no notable pressure in this area for the CTS Prototype Pack M1.

Figures 3 thru 7 provide a more detailed breakdown of the pressure response in each anatomical area for testing of the CTS Prototype Pack M1.



Anterior Shoulder

Figure 3 Pressure map for anterior shoulder.

The zone of peak pressure on this contour plot was centered at the edge of the shoulder pad foam. This site was under the 2.5 cm surface webbing strap, where the padding was most turned toward the shoulder.

There was no significant pressure was recorded in the Posterior Shoulder area.

Posterior Shoulder



Figure 4 Pressure map for posterior shoulder.

No significant pressures were found in this area.

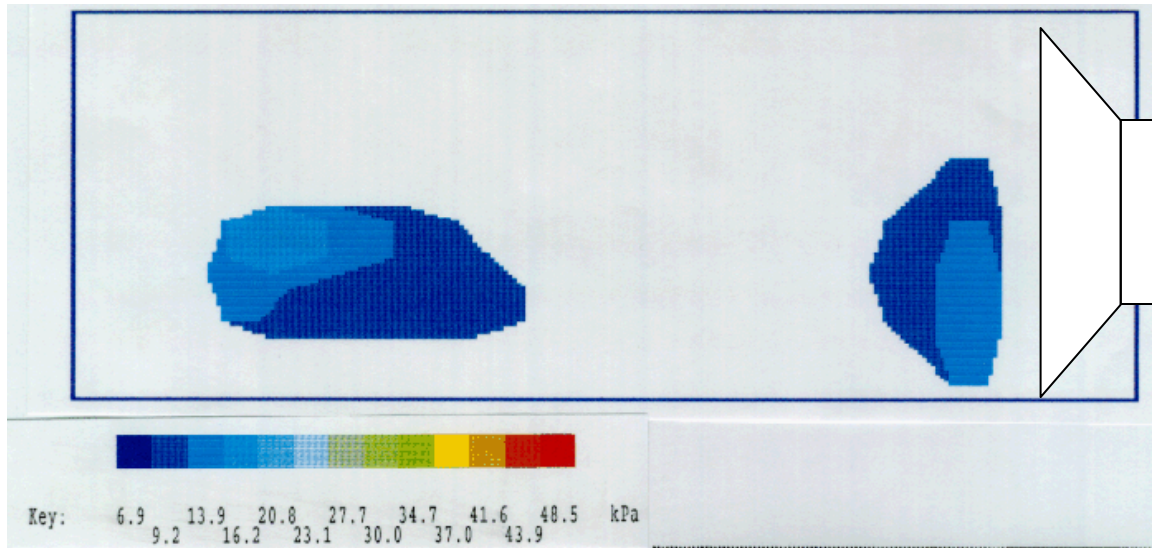


Figure 5 Pressure map for upper lumbar region.

Increased pressure due to the rise of the buttocks can be seen in this pressure profile.

Upper Lumbar →



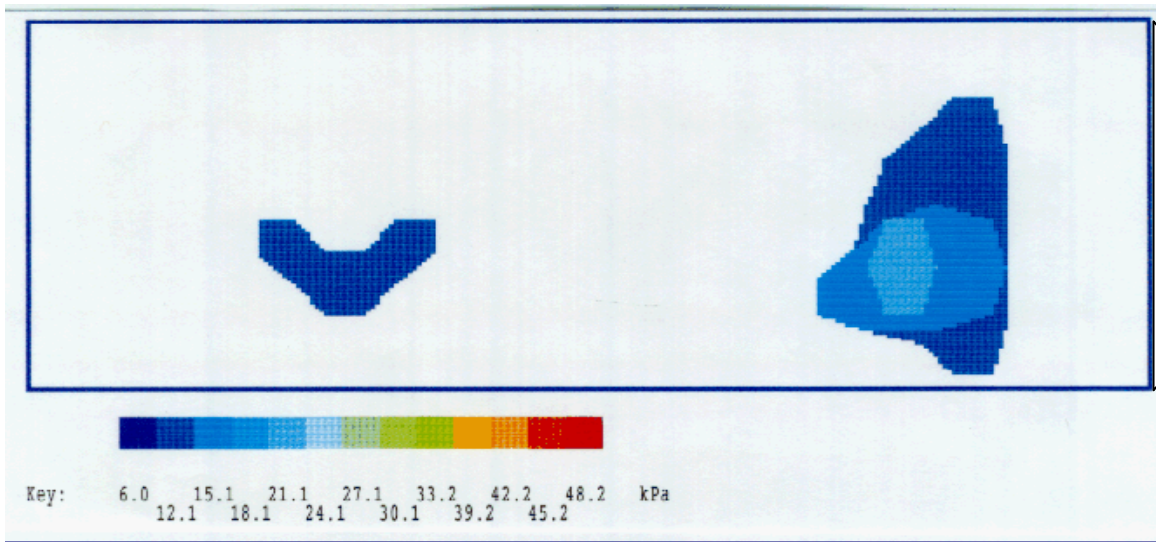
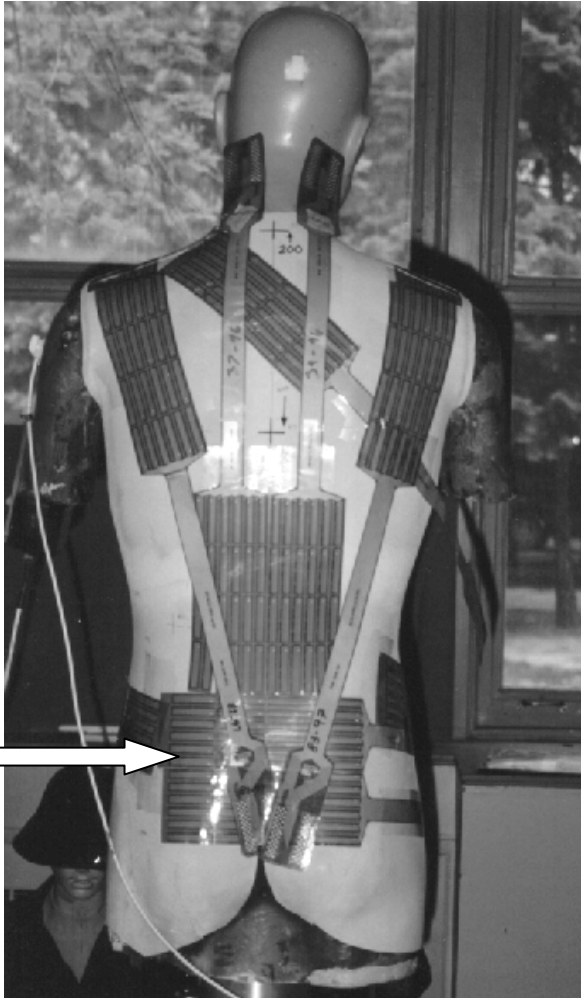


Figure 6 Pressure map for lower lumbar region.

The edges of the lumbar pad caused the regions of increased pressure visible in this contour plot.



Lower Lumbar

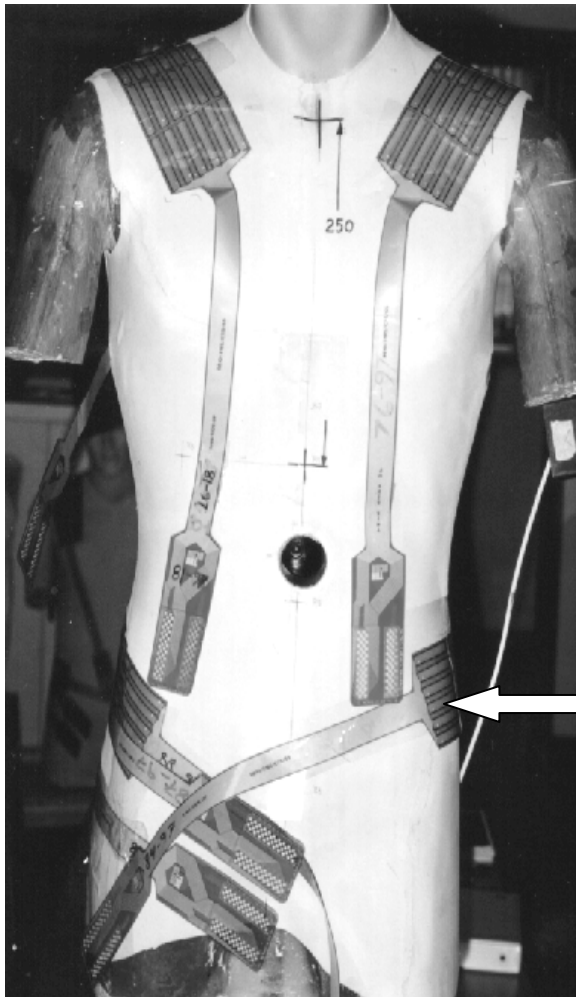
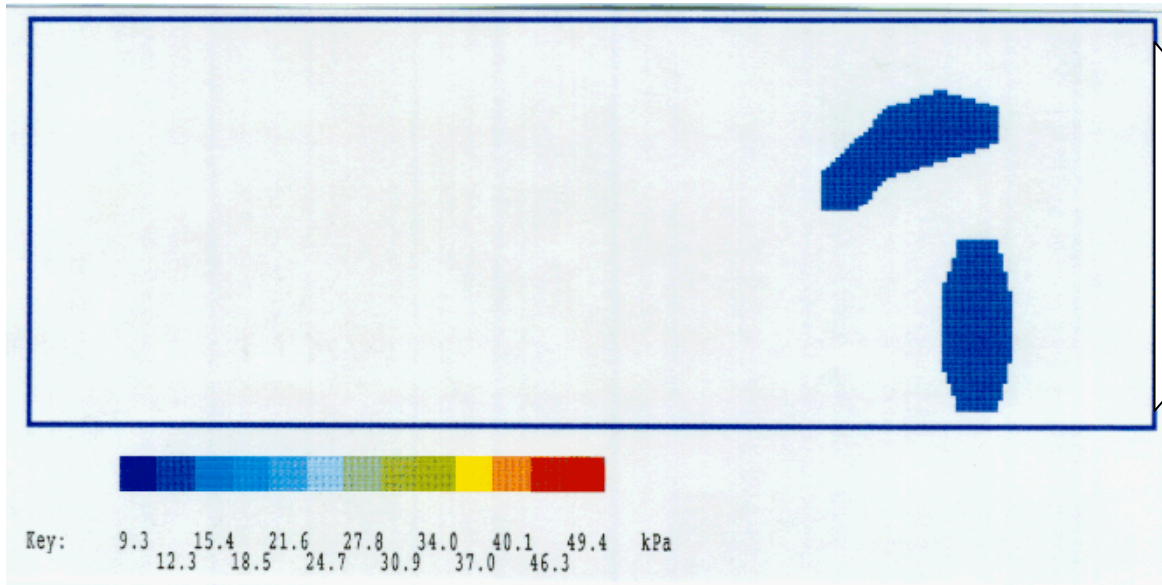


Figure 7 Pressure map for iliac (hip) region.

The zone of high pressure shown in this plot occurred at the edge of the hip belt padding and at the top corner seam of the combat shirt lower pocket.

Iliac Crest

3.3 Compliance - Stiffness Testing

Stiffness testing of the CTS Prototype Pack system was performed in three axes : torsional bending was induced about the z (superior/inferior) axis; lateral bending was induced about the x (anterior/posterior) axis: and forward bending was induced about the y (medial/lateral) axis. Table 9 provides a summary of the LC system stiffness about these three axes.

Table 9 Stiffness and initial resistance values for testing of the CTS Prototype Pack system

	Torsional Bending	Lateral Bending	Forward Bending
System Stiffness (Nm/θ)	0.22 from 0° to 4° 1.59 from 4° to 8° 0.79 from 8° to 10°	2.6 from 0° to 10°	-0.522 from 0° to 40°

The force-deflection diagrams of the pack in these directions are shown in Figures 8 and 9. Of note is the non-linear nature of the response to loading in the torsional testing.

TORSIONAL STIFFNESS

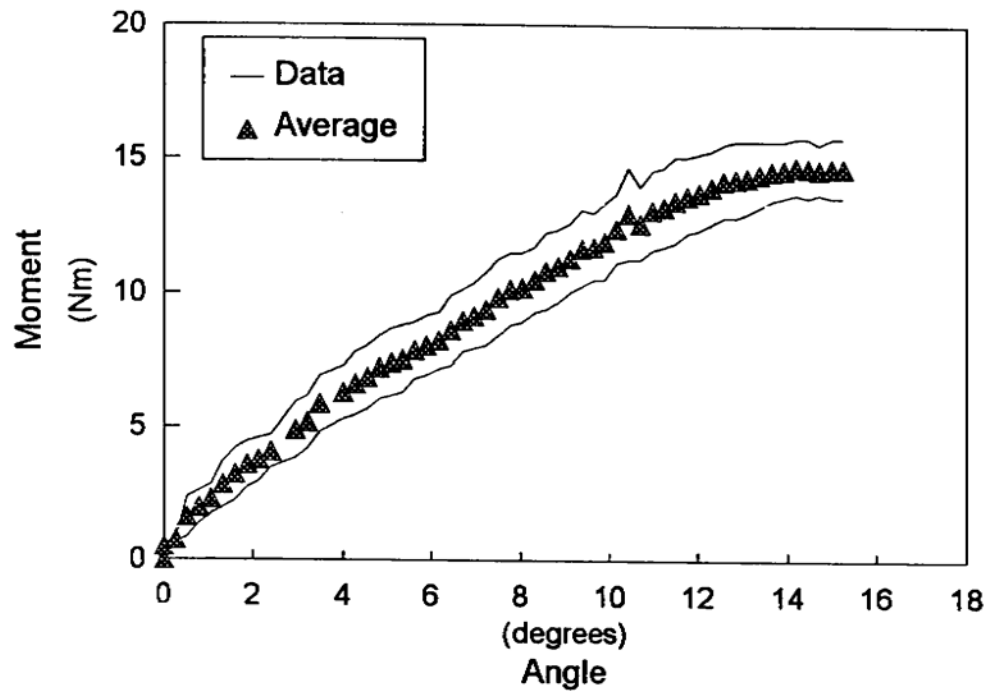


Figure 8 Torsional moment as a function of angle.

Torsional stiffness is defined as the maximum slope of the graph.

LATERAL STIFFNESS

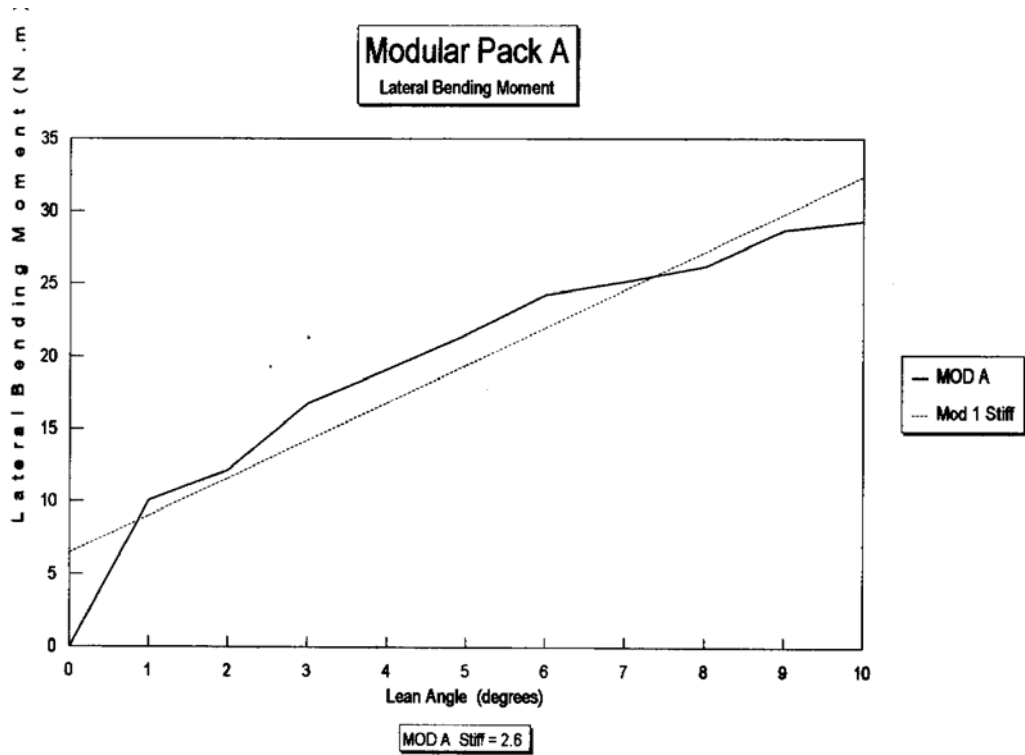


Figure 9 Lateral bending moment as a function of angle.

Lateral bending stiffness is defined as the maximum slope of the graph.

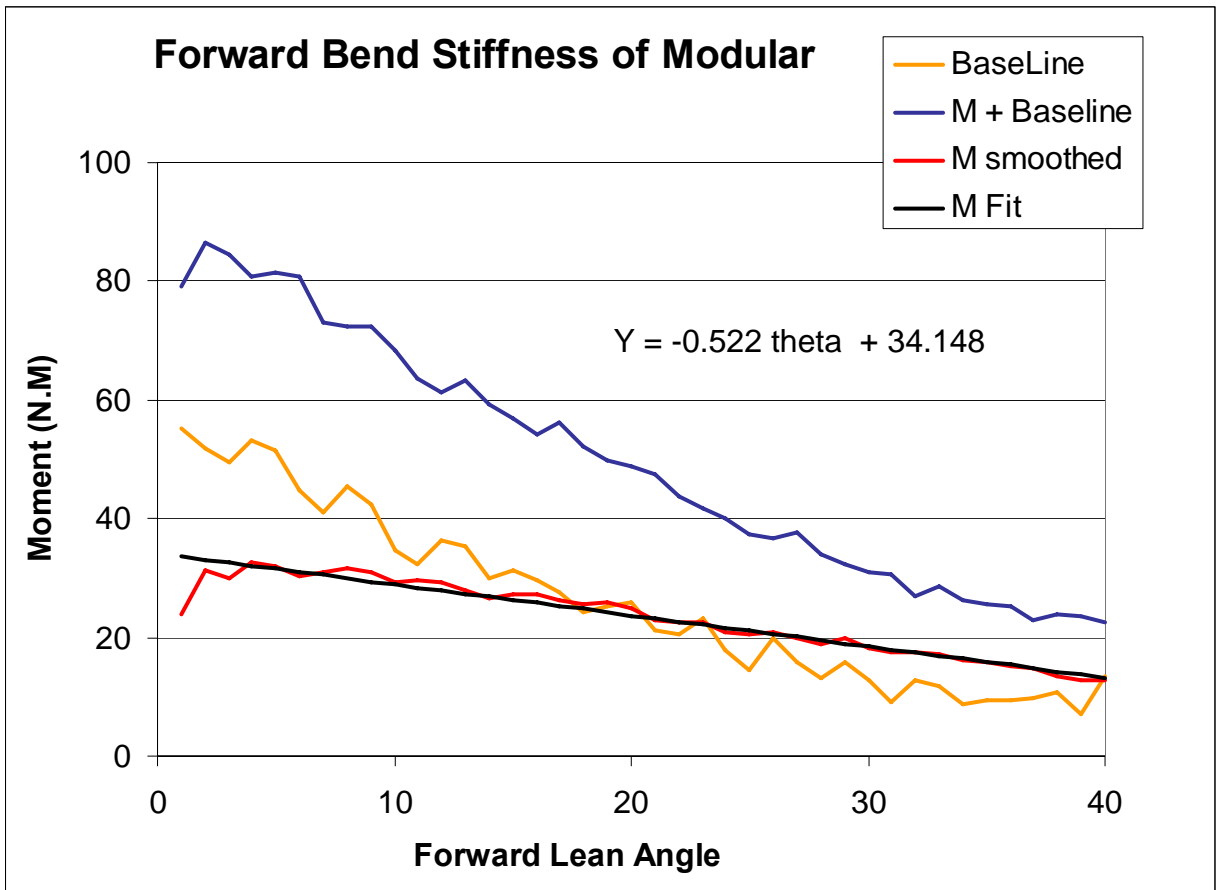


Figure 10 Forward bending moment as a function of angle.

Forward bending stiffness is defined as the average maximum slope of the graph.; -0.522 N.m/degree of forward bend.

4.0 Discussion

4.1 Comparison to Threshold Limit Values

4.1.1 Average Contact Pressures.

As yet, no consensus exists regarding an acceptable safe limit for average skin contact pressures at the shoulder, lower back or hip. A maximum value of 14 kPa is recommended for exposures which exceed 8 hours in order to prevent skin necrosis due to blood occlusion. Previous studies by this laboratory have indicated that average contact pressures at the shoulder which exceed 20 kPa will lead to discomfort in the neck and shoulder region in 95% of soldiers. This value is recommended as a threshold limit value for typical load carriage applications.

The CTS Prototype Pack M1 exhibited average pressures which slightly exceeded the threshold limit for all contact regions except the posterior shoulder and iliac crest. Of note was a finding of no contact pressures in the region of the posterior shoulder. Pressures which exceeded the limit are within the range typical of military load carriage systems, but are likely to lead to discomfort in these regions.

4.1.2 Peak Contact Pressures

The sensitivity of skin to instantaneous peak pressures varies widely with the nature of the pressure waveform and the region of the body under consideration. A value of 120 kPa is considered to be a conservative threshold limit value for peak pressures in the region of the shoulder, hip and waist.

In no case did the Prototype Pack M1 exhibit pressures which exceeded the threshold limit. The highest value observed, 39.3 kPa, was in the anterior shoulder region and corresponded to the high average pressure (19.5 kPa) in this area.

4.2 Comparison to Current Benchmarks

A statistical approach developed under a previous study was used to compare the performance of load carriage systems. The method is based on two steps. In the first, a series

of nine load carriage systems were evaluated using the LC simulator and the stiffness tester. The same systems were also evaluated in human factor trials. The correlation between physical measurements and human factor measurements indicated the objective values which significantly related to soldier load carriage performance acceptability.

In the second step, the benchmark pool was examined to determine the spread of data within any physical measure among the nine packs. The appropriate means and standard deviations were used to establish confidence intervals. In this study, upper and lower deciles ($\pm = 0.1$) were calculated. Thus, a load carriage system with a measured value outside this confidence interval has a likelihood of less than 10% of having performance equivalent to all members of the benchmark pool.

Combining the two steps leads to consideration of the distribution of variables significantly correlated to human factors measures. In this way, the performance of any load carriage system can be meaningfully compared to several systems simultaneously. It also follows that the choice of systems included in the benchmark pool is critical, since an objective is to design a superior device.

4.2.1 Current Benchmark Pool

The current reference data are extracted from a previous study of currently available military load carriage systems. In this particular pool of nine systems, a number of ruck, webbing and vest permutations were examined. The systems were:

- Australian Field Pack Large 1994 with webbing.
- British UK-90 Pack and webbing.
- DACME Packboard with Canadian 1982 webbing.
- DACME Packboard with load carriage vest.
- DACME Packboard with Canadian 1982 webbing and fragmentation vest.
- DACME Packboard with load carriage vest and fragmentation vest.
- Canadian 1982 issue with webbing.
- Canadian 1982 issue with load carriage vest.
- Canadian 1982 issue with webbing and fragmentation vest.

4.2.2 Comparison Variables

Significant correlations between LC simulator and stiffness measurements and human factor measurements are indicated in Table 4.2.1. In total, 21 of 39 measurements had significant correlations with $p < .05$, including a number of variables which correlated with more than one human factor measure.

Table 10 Comparison variables.

Asterisk indicates LC system measurements which are significantly correlated to human factors measurements.

**Correlated LC Simulator and Human Factors Measures
Displacements and Forces**

<i>LC Simulator Measures</i>	<i>Correlated Human Factors Measurements</i>
<i>Displacement (mm)</i>	x * Posterior Hip Discomfort
	y
	z * Posterior Hip Discomfort
	r * Posterior Hip Discomfort
<i>Moment (Avg, Nm/kg)</i>	x
	y * Forward Flexion Mobility, Overall Comfort, Overall Fit
	z
	r
<i>Force (Avg, N/kg)</i>	x
	y * Front Mobility, Overhead Mobility, Posterior Shoulder Discomfort, March Thermal Comfort,
	z * Front Mobility, Overhead Mobility, March Thermal Comfort
	r
<i>Moment (Amp, Nm/kg)</i>	x * Torsional Mobility, Overall Mobility, Lie Function, Balance, Agility, Anterior Shoulder Discomfort, March Acceptability, March Comfort
	y
	z * Front Mobility
	r * Posterior Neck Discomfort
<i>Force (Amp, N/kg)</i>	x
	y
	z * Lie Function, Load Control, March Acceptability, March Integration, Overall Balance Overall Comfort, Overall Fit, Overall Maneuverability
	r * Load Control, March Integration

Table 10 (continued) Comparison variables.

Asterisk indicates LC system measurements which are significantly correlated to human factors measurements.

**Correlated LC Simulator and Human Factors Measures
Pressures and Stiffness**

<i>LC Simulator Measures</i>	<i>Correlated Human Factors Measurements</i>
<i>Shoulder Pressure (ANT)</i>	
<i>Av (kPa)</i>	* Posterior Hip Discomfort
<i>Pk (kPa)</i>	* Doffing Function
<i>PDI</i>	* Doffing Function
<i>F (N)</i>	* Posterior Neck Discomfort
<i>Shoulder Pressure (POST)</i>	
<i>Av (kPa)</i>	
<i>Pk (kPa)</i>	* Doffing Function
<i>PDI</i>	
<i>F (N)</i>	
<i>Lumbar Pressure (UPPER)</i>	
<i>Av (kPa)</i>	
<i>Pk (kPa)</i>	
<i>PDI</i>	
<i>F (N)</i>	* Posterior Discomfort
<i>Lumbar Pressure (LOWER)</i>	
<i>Av (kPa)</i>	
<i>Pk (kPa)</i>	
<i>PDI</i>	* Front Mobility, Posterior Discomfort
<i>F (N)</i>	
<i>Stiffness (Nm/deg)</i>	
<i>Torsion</i>	* Overhead Mobility, Front Mobility
<i>Flexion</i>	* Combined Function, Posterior Neck Discomfort, Low Back Discomfort
<i>Side</i>	* Front Mobility, Anterior Shoulder Discomfort, Anterior Hip Discomfort

4.2.3
Benc
hmar
k
Com
paris
ons

The comparison of test results to the current benchmark pool is shown in Table 11. In the table, the low decile, mean, and high decile is indicated for each variable. Generally, a low value indicates superior performance, and a high value indicates inferior performance. Exceptions are those values which are normally negative. These are indicated and are treated as absolute values in the analysis. Certain low decile values are unrealistically negative due to the computation methods used. These are treated as zero values for the purposes of analyzing results.

Measurements for the test pack are highlighted. Those measurements falling within high and low decile values are unremarkable and indicate that this parameter is typical of the benchmark pool. Those measurements falling outside the confidence interval are significantly different from the performance of the reference systems and are thus indicating superior or inferior attributes of the test system.

The implication of these results are discussed in terms of design considerations for load control, load transfer, and other factors.

Table 11 Comparison of LC system measurements to current bench mark pool.

The low decile, mean, and high decile for each variable is shown. Measurements which lie outside this range are either superior or inferior in comparison to the systems comprising benchmark pool.

**Benchmark Comparisons
Displacements and Forces**

**Ostrom Prototype Pack M1
Results**

PERFORMANCE RESULTS

			Superior	Low Decile	Mean	High Decile	Inferior
<i>Displacement (mm)</i>	x	*		1.32	1.60	6.82	12.33
	y			1.06		3.83	6.60
	z	*	5.10	7.47	11.32	15.17	
	r	*		8.16	9.40	14.06	19.97
<i>Moment (Avg, Nm/kg)</i>	x (-ve)			0.07	0.00	-0.07	-0.21
	y (-ve)	*		-0.13	-0.20	-0.26	-0.39
	z		0.00	0.01	0.07	0.14	
	r			0.16	0.20	0.30	0.43
<i>Force (Avg, N/kg)</i>	x			7.06	7.30	8.72	10.37
	y (-ve)	*	0.00	-1.06	-1.25	-1.44	
	z	*		8.85	8.94	9.03	9.60
	r			11.49	12.10	12.58	13.66
<i>Moment (Amp, Nm/kg)</i>	x	*		-0.01	0.06	0.13	0.30
	y			0.07	0.32	0.57	1.40
	z	*		-0.01	0.09	0.20	
	r	*		0.11	0.35	0.59	1.40
<i>Force (Amp, N/kg)</i>	x			1.40	2.70	3.18	4.96
	y			-0.19	0.05	0.29	0.90
	z	*		5.41	7.32	7.40	9.22
	r	*		5.91	7.90	8.05	10.18

Table 11 (continued). Comparison of LC system measurements to current bench mark pool.

The low decile, mean, and high decile for each variable is shown. Measurements which lie outside this range are either superior or inferior in comparison to the systems comprising benchmark pool.

**Benchmark Comparison
Pressures and Stiffness**

Gstrom Prototype Pack M1 Results		Correlated Variable	PERFORMANCE RESULTS				
			Superior	Low Decile	Mean	High Decile	Inferior
Shoulder Pressure (ANT)	Av (kPa)	*	19.50	21.78	28.00	34.22	
	Pk (kPa)	*	39.30	41.87	72.26	102.66	
	PDI	*		1.63	2.00	2.57	3.52
	F (N)	*		43.38	72.30	100.50	157.62
Shoulder Pressure (POST)	Av (kPa)	*	#	13.63	18.94	24.26	
	Pk (kPa)	*	#	27.01	49.71	72.41	
	PDI	*	#	1.34	2.68	4.02	
	F (N)	*	#	22.40	73.64	124.89	
Lumbar Pressure (UPPER)	Av (kPa)	*		6.88	14.90	22.57	38.27
	Pk (kPa)	*		10.12	19.40	55.01	99.90
	PDI	*	1.30	1.42	2.37	3.32	
	F (N)	*		2.10	22.96	36.10	43.81
Lumbar Pressure (LOWER)	Av (kPa)	*		4.65	15.50	30.29	55.93
	Pk (kPa)	*		-2.39	24.10	84.87	172.12
	PDI	*		1.32	1.60	2.81	4.29
	F (N)	*		-10.31	30.10	58.52	123.56
Stiffness (Nm/deg)	Torsion	*		0.78	1.59	2.13	3.48
	Flexion	*	-0.522	0.11	0.28	0.44	
	Side	*		-1.90	2.60	6.18	14.18

4.3 Design Considerations

4.3.1 Load Control

Displacement Effects

The amount of relative displacement between a load and the users body that a LCS suspension system allows bears directly on the users ability to control the load. Optimally, a load will closely follow the motion of the shoulders while allowing the hips to function with minimal resistance. Following the motion of the shoulders is particularly important during motions requiring large displacements (bending over, ducking under obstacles) or rapid changes in direction. Any large shifting of a heavy load in any direction quickly becomes difficult for a wearer to restrain. This requirement leads to an upper boundary for the allowable relative displacement of a payload.

In contrast, low amplitude motions such as walking over level ground require different suspension system characteristics. With small displacements and accelerations, the human body is able to easily balance slight shifts in the relative position of the load. In overly stiff suspension systems, the relatively small displacements of the body are still closely tracked, resulting in unnecessary forces on the body. All the accelerations and decelerations of the load will be directly transmitted to a users body. These forces, although not large, are cyclically applied and of very long duration. As a result, they contribute to local muscle fatigue and higher peak contact pressures. This situation leads to a lower boundary for the allowable relative displacement of a payload. LCS suspension systems that restrain a payload more than is necessary, may pay a penalty in user comfort.

The CTS Prototype Pack M1 showed fair control over the relative displacement of the load. It was a superior performer in its control of vertical motion, and average in the control of anterior/posterior motion. However, the constraint of motion in the transverse direction was inferior. Good displacement control is correlated with reduced posterior hip discomfort.

Stiffness Effects

The resistance that a LCS offers to motion is related to the human effort required to force that LCS into the required geometry. A tradeoff occurs between the small amplitude

motions of gait and the large motions required for maneuverability. In large magnitude motions, high bending and torsional stiffness work against the user. The user must assume awkward or less stable postures to achieve the range of motion required, thus decreasing their ability to control their load. For small amplitude motions like gait, the stiffness of a LCS may allow it to transfer load effectively to the skeleton and if the range of motion required for gait is not restricted, it will perform well during walking. Therefore, for optimal load control, the combined design elements that provide stiffness to a LCS should constrain the load without constraining a user.

The CTS Prototype Pack M1 showed typical stiffness characteristics in torsion and in sideways bending. It also demonstrated very low forward flexion stiffness. Low stiffness in flexion has been shown to be correlated to good combined functional ratings where large movements are required, reduced posterior neck discomfort and reduced lower back discomfort.

4.3.2 Load Transfer

There are several factors limiting the human body's ability to carry a load. These are: local muscle fatigue caused by unrelieved muscle contraction, transverse shear load through the spine, local contact pressure resulting in the compression of nerves, point pressures on underlying structures, high continuous contact pressures causing compression of underlying tissue and a subsequent inability to oxygenate the tissue.

Forces and moments

The stiffness elements within a LCS design and the suspension system should serve to transmit the vertical load through the skeleton and onto the spinal column. Any transverse shear load on the spine that is induced by the design is parasitic and can quickly become the limiting factor in load carriage ability. Typically the shoulder girdle and the pelvis are used as the main load transfer sites and are particularly suited for load control and transfer. The average magnitude of the hip reaction force is a direct indicator of the muscle force required by an individual to support this load and LCS. The amplitude of the reaction forces reflects the ability of a LCS suspension system to attenuate the dynamic loading. High amplitudes will require

additional muscle forces for load control and a LCS demonstrating high reaction force amplitudes will typically be more energy costly to wear.

The CTS Prototype Pack M1 was a poor performer with large vertical reaction forces. This is an effect of the stiff suspension, which does not allow for as much separate motion between the pack and torso. It should also be noted that the reaction force in the vertical direction ranges only from 8.85 N/kg to 9.03 N/kg in the data pool, which is a narrow band. It demonstrated typical performance in the anterior/posterior and superior medial/lateral mean reaction forces at the hip. High vertical reaction forces have been correlated with decreased front mobility, decreased overhead mobility, and increased marching thermal discomfort.

This LCS also showed inferior transverse force amplitude characteristics, a function of the inferior transverse displacement.

Average pressures

The average contact pressure in a load transferal region reflects how successful a design is in using the contact site while minimizing the risk of causing tissue damage. Tissue damage may result from continuous compression of underlying tissue and the subsequent inability of the body to oxygenate the tissue. Studies (Reference E) indicate that a safe physiological limit for continuous pressure over 8 hours is 14 kPa, the contact pressure threshold limit for the perception of pain is 20 kPa(Reference C).

The CTS Prototype Pack M1 showed superior shoulder strap performance with an average contact pressure of 19.5 kPa in the anterior shoulder region. Average contact pressures in the upper and lower lumbar sites were also typical at 14.9 and 19.4 kPa respectively. Low average pressure values in the anterior shoulder are correlated with reduced posterior hip discomfort.

Peak pressures

Large peak pressures reflect pressure concentrations that can lead to bruising or cause tissue damage due to the inability to oxygenate the tissue. Studies have indicated that the tissue tolerance limit for short duration contact pressure (less than 5 minutes) is in the order of 120 kPa.

The CTS Prototype Pack M1 showed a significantly low peak pressure (39.3 kPa) at the anterior shoulder. Low peak shoulder pressures are related to ease of doffing a LCS. The peak and average pressure in the upper lumbar area were typical, resulting in typical transverse loads on the spine in this region (36.1 N). High transverse shear loads are associated with high posterior discomfort in users. This value approaches the threshold limit value for transverse loads on the spine based on achieving optimal human load carriage performance, as determined in a previous study (Reference F).

5.0 Conclusions and Recommendations

5.1 Conclusions

1. The CTS Prototype Pack M1 was compatible with the standardized dynamic testing methods developed to assess military load carriage systems, subject to the reservations noted.
2. Compared to a benchmark pool of nine military load carriage systems testing of the CTS M1 pack indicated superior performance in:
 - a. Control of relative pack-torso motion in the vertical direction,
 - b. Reduced pressures in the anterior and posterior shoulders, and
 - c. Lower average moments at the hip.
3. Compared to a benchmark pool of nine military load carriage systems testing of the CTS M1 pack indicated inferior performance in:
 - a. Higher vertical reaction forces at the hip, and
 - b. Higher relative displacement in the transverse direction.
4. The average contact pressure exceeded the threshold limit value expected to cause discomfort in the anterior shoulder, upper lumbar, and lower lumbar regions.
5. The transverse force in the lumbar region was average, below a value expected to cause discomfort in this area.

5.2 Recommendations

1. The CTS Prototype Pack M1 could be included in future benchmark data for the design of military load carriage systems.
2. Reasons for large displacements in the transverse direction should be studied.

6.0 Reservations

Testing of a rucksack in the absence of battle order is of limited value in the prediction of performance under field conditions. As such, these results should be used as guidelines to design only. Any proposed rucksack should ultimately be tested with suitably designed battle order to determine whole system compatibility.

7.0 Acknowledgments

This report is part of the deliverables for Public Works and Government Services of Canada contact # W7711-7-7384/001/SRV and was undertaken in support of design work by Bill Ostrom of Ostrom Manufacturing and Designs Inc. in Nolalu, Ontario. First, I would like to acknowledge the vision of Bill Ostrom who came to listen and learn from speakers at the International Symposium on Military Load Carriage in October 1996 at Queen's University in Kingston, Canada. Since getting to know Bill, our Queen's load carriage team has learned just as much from him. We are kindred spirits in that we just want to design a better system for the soldiers. Thanks Bill.

In addition, I would like to acknowledge Major Linda Bossi from DCIEM who has kept us focussed and inspired, and Dr. Ken Ackles who has always believed in our potential to develop better assessment and design-based tools. We appreciate the emphasis and cooperation of Clothe the Soldier Project staff at NDHQ, specifically, LCol Chris Davis and Major Nick Mattern. It remains our belief that the current design-based approach used in this project, where designers are working with the evaluation teams, will lead to the level of understanding needed for an innovative breakthrough in design for future load carriage systems.

The Design Evaluation and Assessment Team (DEAT) for load carriage is comprised of students, staff and faculty from the Clinical Mechanics Group and the Ergonomics Research Group. Our APLCS project manager, Susan Reid continues to advance the LC Simulator's potential to deliver the goods. It is reassuring to know that we can count on you to come through, Sue, and with your usual sense of humour. APLCS assistant manager, Jonathon Doan, has the skills, dedication and ability to stay 'cool' and 'stick handle' through tough spots. Thanks Jon. Also Alan Rigby, our newest addition to the team, has chased down answers to mysterious problems with great thought and understanding. David Siu is a whiz with computers and hardware and Gerry Saunders is always willing to lend a hand. On the faculty side, although Joan Stevenson has been busy with added administrative duties, she is willing to put in late nights with Sue, Jon and I to get things done. Thanks. This has truly been a great team effort where it takes all of us to reach our deliverables on time (well almost on time).

J. Timothy Bryant, Ph.D., P. Eng., Coordinator: Clinical Mechanics Group

8.0 References

- A. Stevenson, JM., Bryant, JT., Reid, SA., Doan, JB., Siu, D., Saunders, G., MacNeil, SK., and C. Barrick.. (1996). Validation of the Load Carriage Simulator : Research and Development of an Advanced Personal Load Carriage System. *DCIEM Contract #W7711-4-7225/01-XSE*.
- B. MacNeil, SK. (1996). Validation and development of a mathematical model of the shoulder for load carriage. Master's Thesis, Queen's University, Kingston, ON. (Unpublished).
- C. Holloway, JA., Daly, CH., Kennedy, D., and J. Chimoskey. (1976). Effects of external pressure loading on human skin blood flow. . *Journal of Applied Physiology* **40**: 596-600.
- D. Rose, J., and JG. Gamble. (1994). *Human Walking - 2nd Edition*. (Williams and Wilkins, Baltimore, Maryland, USA.). pp. 263.
- E. Stevenson, JM., Bryant, JT., Pelot, RP., Morin, EM., Deakin, JM., Reid, SA., Doan, JB., (1997) Research and Development of an Advanced Personal Load Carriage System, Phases II and III, DCIEM Contract # W7711-5-7273/001/TOS.
- F. Stevenson, JM., Bryant, JT., Reid, SA., Doan, JB., et al. (1995) Research and Development of an Advanced Personal Load Carriage System, Phases I, DCIEM Contract # W7711-4-7225/01-XSE.

Annex A - Test Results for CTS Prototype Pack M1

Relative Pack-torso Displacement over Ten Seconds.

Reaction Forces over Ten Seconds.

Reaction Moment over Ten Seconds.

Strap Forces over Ten Seconds.

File: AX1B1.DAT Test id: Ostrom Prototype Pack M1, Level Walking 1.8 Hz, +/- 25.4 mm

Summary of Strap Forces

Time (s)	Shoulder Strap (N)				Waist Strap (N)			
	Avg	Std	Max	Min	Avg	Std	Max	Min
0	80	15	99	49	47	7	57	40
300	80	16	102	48	42	6	51	36
600	81	19	105	42	47	10	58	40
900	80	16	101	48	48	6	57	41
1200	80	17	101	48	46	9	55	40
Trial	80	16	102	47	46	7	55	40

Summary of Reaction Forces

Time (s)	Fx (N)		Fy (N)		Fz (N)	
	Avg	Std	Avg	Std	Avg	Std
0	221	44	-3	16	824	287
300	223	43	-1	15	825	286
600	224	45	-1	15	828	291
900	227	41	-1	16	825	283
1200	229	41	-0	17	828	282
Trial	225	43	-1	16	826	286

Summary of Reaction Moments

Time (s)	Mx (Nm)		My (Nm)		Mz (Nm)	
	Avg	Std	Avg	Std	Avg	Std
0	1	11	-5	23	-1	9
300	-1	8	-6	23	-1	6
600	-1	9	-6	26	-1	9
900	-1	8	-8	23	-1	6
1200	-1	10	-8	23	-1	9
Trial	-1	9	-7	24	-1	8

File: AXB1.DAT Test id: Ostrom Prototype Pack M1, Level Walking 1.8 Hz, +/- 25.4 mm

Range of Reaction Forces

Time (s)	Fx (N)		Fy (N)		Fz (N)	
	Avg Min	Avg Max	Avg Min	Avg Max	Avg Min	Avg Max
0	156	324	-34	21	277	1258
300	157	323	-29	27	268	1256
600	159	340	-32	26	239	1237
900	157	320	-29	31	283	1256
1200	157	320	-27	34	287	1257
Trial	157	325	-30	28	271	1253

Delta Fx: 168 N

Delta Fy: 58 N

Delta Fz: 982 N

Range of Reaction Moments

Time (s)	Mx (Nm)		My (Nm)		Mz (Nm)	
	Avg Min	Avg Max	Avg Min	Avg Max	Avg Min	Avg Max
0	-7	11	-51	31	-7	4
300	-11	8	-53	30	-6	4
600	-11	8	-59	32	-8	4
900	-12	8	-56	25	-6	4
1200	-14	7	-56	24	-6	4
Trial	-11	8	-55	28	-7	4

Delta Mx: 19 Nm

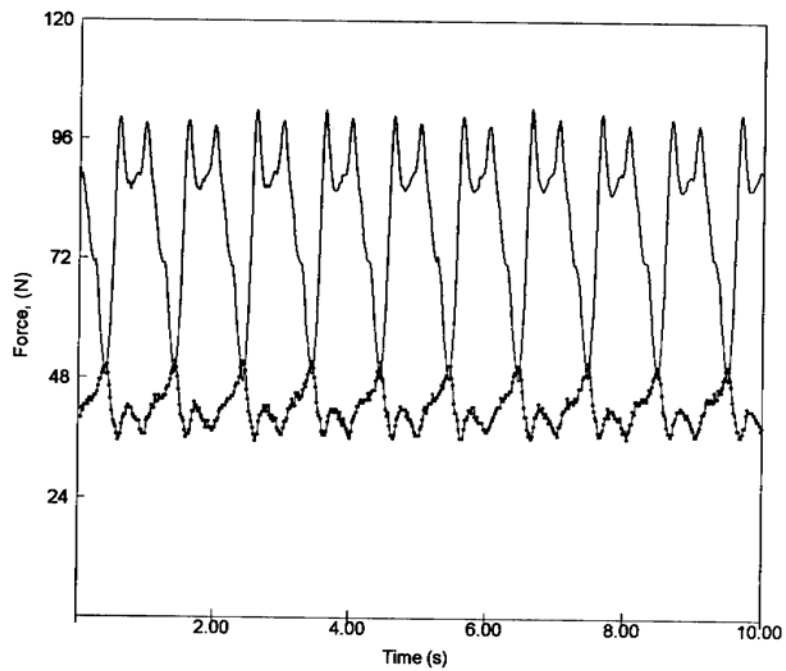
Delta My: 83 Nm

Delta Mz: 11 Nm

Strap Forces

Ostrom Prototype M1, Level Walking 1.8 Hz, +/- 25.4 mm

File: AX1B1.DAT - Time: 300.0 seconds

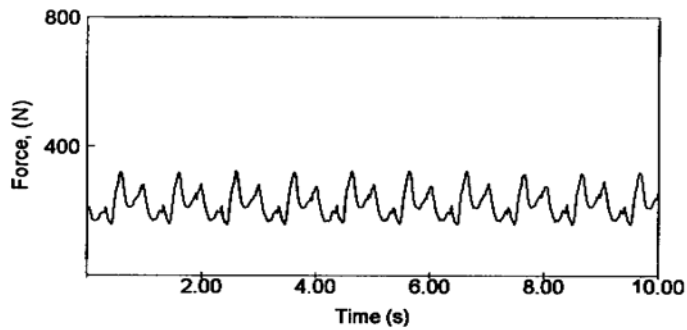


— Shoulder —•— Waist

Reaction Forces

Ostrom Prototype M1, Level Walking 1.8 Hz, +/- 25.4 mm

File: AX1B1.DAT - Time: 300.0 seconds

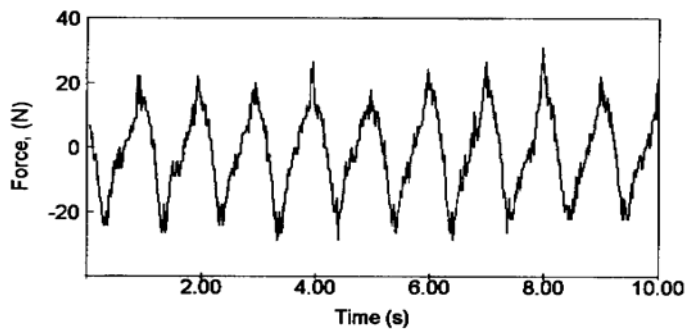


X Force

anterior/posterior

avg min: 157.0 N

avg max: 322.8 N

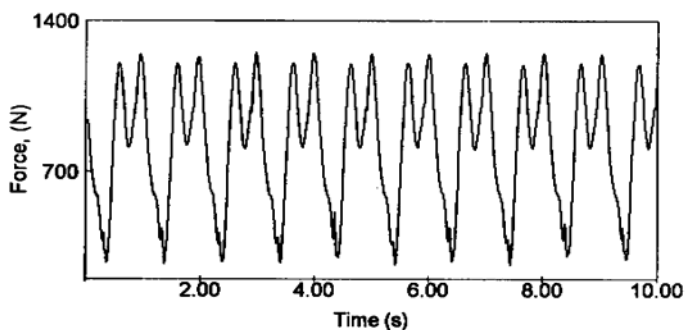


Y Force

side to side

avg min: -29.2 N

avg max: 27.1 N



Z Force

vertical

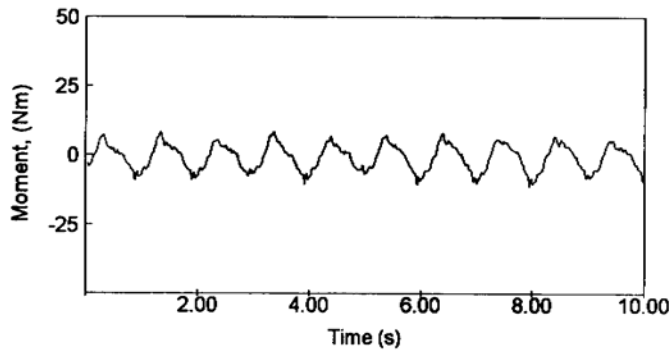
avg min: 268.4 N

avg max: 1256.3 N

Reaction Moments

Ostrom Prototype M1, Level Walking 1.8 Hz, +/- 25.4 mm

File: AX1B1.DAT - Time: 300.0 seconds

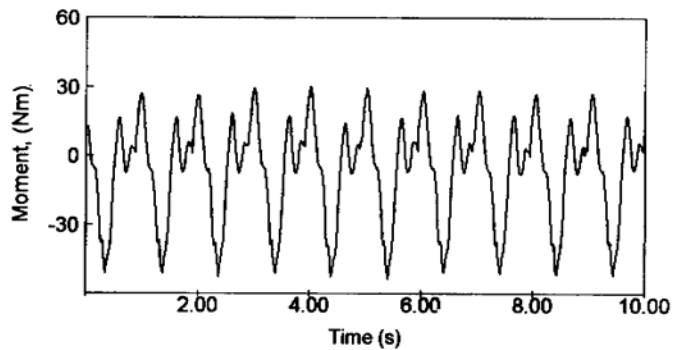


X Moment

about anterior/posterior axis

avg min: -10.6 Nm

avg max: 7.7 Nm

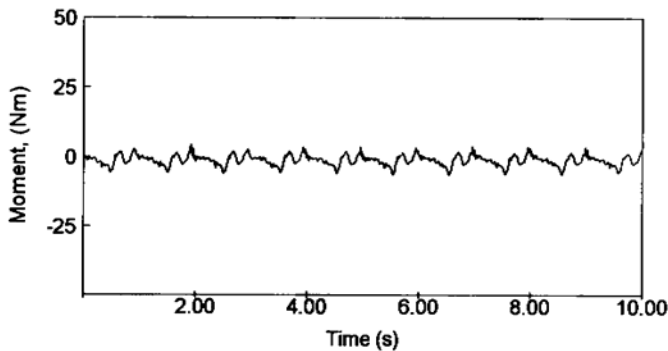


Y Moment

about side to side axis

avg min: -53.1 Nm

avg max: 29.5 Nm



Z Moment

about vertical axis

avg min: -6.3 Nm

avg max: 3.9 Nm

UNCLASSIFIED

DOCUMENT CONTROL DATA <small>(Security classification of the title, body of abstract and indexing annotation must be entered when the overall document is classified)</small>		
1. ORIGINATOR (The name and address of the organization preparing the document, Organizations for whom the document was prepared, e.g. Centre sponsoring a contractor's document, or tasking agency, are entered in section 8.) Publishing: DRDC Toronto Performing: Ergonomics Research Group & Clinical Mechanics Group, Queen's University, Kingston, Ontario, Canada, K7L 3N66 Monitoring: Contracting: DRDC Toronto		2. SECURITY CLASSIFICATION <small>(Overall security classification of the document including special warning terms if applicable.)</small> UNCLASSIFIED
3. TITLE (The complete document title as indicated on the title page. Its classification is indicated by the appropriate abbreviation (S, C, R, or U) in parenthesis at the end of the title) Clothe The Soldier Prototype Modular Load Carriage System Design Assessment using the APLCS Load Carriage Simulator (U) (U)		
4. AUTHORS (First name, middle initial and last name. If military, show rank, e.g. Maj. John E. Doe.) J. M. Stevenson; J. T. Bryant; J. Doan; W. A. Rigby; S.A. Reid		
5. DATE OF PUBLICATION <small>(Month and year of publication of document.)</small> March 2006	6a NO. OF PAGES <small>(Total containing information, including Annexes, Appendices, etc.)</small> 59	6b. NO. OF REFS <small>(Total cited in document.)</small> 6
7. DESCRIPTIVE NOTES (The category of the document, e.g. technical report, technical note or memorandum. If appropriate, enter the type of document, e.g. interim, progress, summary, annual or final. Give the inclusive dates when a specific reporting period is covered.) Contract Report		
8. SPONSORING ACTIVITY (The names of the department project office or laboratory sponsoring the research and development – include address.) Sponsoring: Tasking:		
9a. PROJECT OR GRANT NO. (If appropriate, the applicable research and development project or grant under which the document was written. Please specify whether project or grant.)	9b. CONTRACT NO. (If appropriate, the applicable number under which the document was written.) W7711-8-7414/001/SRV	
10a. ORIGINATOR'S DOCUMENT NUMBER (The official document number by which the document is identified by the originating activity. This number must be unique to this document) DRDC Toronto CR 2006-303	10b. OTHER DOCUMENT NO(s). (Any other numbers under which may be assigned this document either by the originator or by the sponsor.)	
11. DOCUMENT AVAILABILITY (Any limitations on the dissemination of the document, other than those imposed by security classification.) Unlimited distribution		
12. DOCUMENT ANNOUNCEMENT (Any limitation to the bibliographic announcement of this document. This will normally correspond to the Document Availability (11). However, when further distribution (beyond the audience specified in (11) is possible, a wider announcement audience may be selected.)) Unlimited announcement		

UNCLASSIFIED

UNCLASSIFIED

DOCUMENT CONTROL DATA

(Security classification of the title, body of abstract and indexing annotation must be entered when the overall document is classified)

13. **ABSTRACT** (A brief and factual summary of the document. It may also appear elsewhere in the body of the document itself. It is highly desirable that the abstract of classified documents be unclassified. Each paragraph of the abstract shall begin with an indication of the security classification of the information in the paragraph (unless the document itself is unclassified) represented as (S), (C), (R), or (U). It is not necessary to include here abstracts in both official languages unless the text is bilingual.)
- (U) The objective of this study was to conduct a standardized assessment of the CTS prototype modular (M1) pack on a computerized Load Carriage (LC) Simulator. Specifically, the LC Simulator measured variables which assess load control and load transfer capability of the M1 pack. These aspects of pack design were comprised of several displacement, force, moment and pressure variables that had been validated on previously tested systems where LC Simulator outputs were compared to assessments by experienced users during human trials.
- A trial consisted of measuring inertial properties and dimensions, loading the pack to a 25 kg payload, mounting the pack and balancing the moments. Five intervals of 10 seconds of data were recorded over a 1200 second period. Output variables were: three dimensional motions of the pack's center of gravity relative to the person's motion; forces and moments from a three dimensional load cell at the level of the hips; skin average pressures, peak pressures and skin forces over the anterior and posterior shoulders, and upper and lower back. Pack resistance to flexion/extension, lateral bending and torsion were also evaluated through a set protocol.
- For load control, the CTS M1 pack ranked as average in side to side (x) and resultant (r), superior in up and down (z), and inferior in transverse (y) relative pack-person motions. All other load control variables were not significantly different from other systems. For load transfer, the M1 pack was superior for dampening average forces in the transverse direction (y) but inferior in the vertical (z) direction. Inferior force amplitude values were also seen in the y direction. The CTS Prototype Pack M1 did maintain transverse lumbar forces at an acceptable level (36.1 N). This value is well below the recommended design limit for transverse force on the lumbar spine (135 N). The CTS Prototype Pack M1 showed typical stiffness characteristics in torsion and in sideways bending. It also demonstrated very low forward flexion stiffness. Low stiffness in flexion has been shown to be correlated to good combined functional ratings where large movements are required, reduced posterior neck discomfort and reduced lower back discomfort.
- (U) Le but de la présente étude était de mener une évaluation standardisée du prototype de sac à dos modulaire HLS (M1) sur un simulateur de transport de charge informatisé. En particulier, le simulateur a mesuré des variables qui évaluent le contrôle et le transfert de la charge du sac à dos M1. Ces aspects de la conception du sac à dos comprenaient plusieurs variables de mouvement, de force, de moment et de pression qui avaient été validées sur des systèmes déjà mis à l'épreuve où les résultats du simulateur de transport de charge étaient comparés aux évaluations faites par des utilisateurs expérimentés lors d'essais avec des humains.
- Un essai consistait à mesurer les propriétés d'inertie et de dimensions avec une charge utile de 25 kg sur le sac à dos, en montant ce sac à dos et en équilibrant ses moments. Cinq intervalles de 10 secondes de données ont été enregistrés pendant une période de 1200 secondes. Les variables de sortie étaient les suivantes : mouvements sur trois dimensions du centre de gravité du sac à dos par rapport aux mouvements de la personne; les forces et les moments par rapport à une cellule dynamométrique tridimensionnelle au niveau des hanches; pressions moyennes sur la peau, pressions de crête et forces sur l'avant et l'arrière des épaules, ainsi que le sac supérieur et inférieur. La résistance du sac à dos à la flexion/extension, la flexion latérale et la torsion ont également fait l'objet d'une évaluation dans le cadre d'un protocole bien défini. En ce qui concerne le contrôle de la charge, le sac à dos CTS M1 a obtenu une note

moyenne pour les mouvements d'un côté à l'autre (x) et la résultante (r), une note supérieure pour les mouvements verticaux (z) et une note inférieure pour les mouvements transversaux (y) quant aux mouvements relatifs entre le sac à dos et une personne. Les autres variables de contrôle de charge ne présentaient aucune différence sensible par rapport aux autres systèmes. En ce qui concerne le transfert de charge, le sac à dos M1 s'est révélé supérieur pour amortir les forces moyennes sur le plan transversal (y), mais inférieur sur le plan vertical (z). On a également relevé des valeurs d'amplitude de force inférieures sur le plan y. Le prototype de sac à dos M1 HLS maintenait les forces lombaires transversales à un niveau acceptable (36,1 N). Cette valeur est très inférieure à la limite nominale recommandée pour les forces transversales sur le rachis lombaire (135 N). Ce prototype de sac à dos M1 HLS a démontré des caractéristiques de rigidité typiques pour la torsion et la flexion latérale. Il a également démontré une rigidité en flexion faible vers l'avant. Cette rigidité en flexion faible s'est avérée correspondre à un bon taux de fonctionnalité lorsque des mouvements à grande amplitude sont nécessaires, ainsi qu'à une réduction de l'inconfort à l'arrière du cou et au bas du dos.

14. **KEYWORDS, DESCRIPTORS or IDENTIFIERS** (Technically meaningful terms or short phrases that characterize a document and could be helpful in cataloguing the document. They should be selected so that no security classification is required. Identifiers, such as equipment model designation, trade name, military project code name, geographic location may also be included. If possible keywords should be selected from a published thesaurus, e.g. Thesaurus of Engineering and Scientific Terms (TEST) and that thesaurus identified. If it is not possible to select indexing terms which are Unclassified, the classification of each should be indicated as with the title.)

(U) Load carriage; load carriage simulator; APLCS; Small Pack; pressure measurement system; compliance tester; CTS; clothe the soldier; modular pack

UNCLASSIFIED