

Award Number: W81XWH-06-1-0177

TITLE: Application of Nanotechnology in the Targeted Release of Anticancer Drugs in Ovarian Cancer Treatment

PRINCIPAL INVESTIGATOR: Colleen Feltmate, M.D.

CONTRACTING ORGANIZATION: Brigham and Women's Hospital, Incorporated
Boston, Massachusetts 02115-6110

REPORT DATE: December 2006

TYPE OF REPORT: Annual

PREPARED FOR: U.S. Army Medical Research and Materiel Command
Fort Detrick, Maryland 21702-5012

DISTRIBUTION STATEMENT: Approved for Public Release;
Distribution Unlimited

The views, opinions and/or findings contained in this report are those of the author(s) and should not be construed as an official Department of the Army position, policy or decision unless so designated by other documentation.

REPORT DOCUMENTATION PAGE

Form Approved
OMB No. 0704-0188

Public reporting burden for this collection of information is estimated to average 1 hour per response, including the time for reviewing instructions, searching existing data sources, gathering and maintaining the data needed, and completing and reviewing this collection of information. Send comments regarding this burden estimate or any other aspect of this collection of information, including suggestions for reducing this burden to Department of Defense, Washington Headquarters Services, Directorate for Information Operations and Reports (0704-0188), 1215 Jefferson Davis Highway, Suite 1204, Arlington, VA 22202-4302. Respondents should be aware that notwithstanding any other provision of law, no person shall be subject to any penalty for failing to comply with a collection of information if it does not display a currently valid OMB control number. **PLEASE DO NOT RETURN YOUR FORM TO THE ABOVE ADDRESS.**

1. REPORT DATE (DD-MM-YYYY) 01-12-2006		2. REPORT TYPE Annual		3. DATES COVERED (From - To) 1 Dec 2005 – 30 Nov 2006	
4. TITLE AND SUBTITLE Application of Nanotechnology in the Targeted Release of Anticancer Drugs in Ovarian Cancer Treatment				5a. CONTRACT NUMBER	
				5b. GRANT NUMBER W81XWH-06-1-0177	
				5c. PROGRAM ELEMENT NUMBER	
6. AUTHOR(S) Colleen Feltmate, M.D. E-Mail: cfeltmate@partners.org				5d. PROJECT NUMBER	
				5e. TASK NUMBER	
				5f. WORK UNIT NUMBER	
7. PERFORMING ORGANIZATION NAME(S) AND ADDRESS(ES) Brigham and Women's Hospital, Incorporated Boston, Massachusetts 02115-6110				8. PERFORMING ORGANIZATION REPORT NUMBER	
9. SPONSORING / MONITORING AGENCY NAME(S) AND ADDRESS(ES) U.S. Army Medical Research and Materiel Command Fort Detrick, Maryland 21702-5012				10. SPONSOR/MONITOR'S ACRONYM(S)	
				11. SPONSOR/MONITOR'S REPORT NUMBER(S)	
12. DISTRIBUTION / AVAILABILITY STATEMENT Approved for Public Release; Distribution Unlimited					
13. SUPPLEMENTARY NOTES					
14. ABSTRACT As a pilot study to localize the MagNaGel nanoparticles in an orthotopic ovarian cancer mouse model by MRI, mice were injected intraperitoneally with ovarian cancer cells. Tumor growth was monitored by a 4.7T small animal MRI. Once tumor and ascites developed in the mice, cisplatin-loaded MagNagel particles with 10.0 nm IO core (no targeting ligand) were injected into the tail-vein of the cancer bearing mice. After set time periods, MRI was performed on the mice. Organs were harvested and drug levels determined. Relative nanoparticle distribution by MRI images were correlated with drug levels.					
15. SUBJECT TERMS Nanoparticles, ovarian cancer, orthotopic mouse model, chemotherapy					
16. SECURITY CLASSIFICATION OF:			17. LIMITATION OF ABSTRACT	18. NUMBER OF PAGES	19a. NAME OF RESPONSIBLE PERSON
a. REPORT	b. ABSTRACT	c. THIS PAGE			USAMRMC
U	U	U	UU	9	19b. TELEPHONE NUMBER (include area code)

Table of Contents

Introduction.....	4
Body.....	4
Key Research Accomplishments.....	8
Reportable Outcomes.....	8
Conclusions.....	8
References.....	8
Appendices.....	9

Introduction:

Chemotherapy for ovarian cancer has changed little over the years. Sensitivity to platinum-based agents predict disease free survival. However, there are limitations of current therapies. Chemotherapy drugs do not differentiate between normal and tumor cells. Toxicities are a result of damage to normal cells and limit the dosage strength tolerated by the patient. Recent studies suggest that the costs of managing adverse events associated with toxicities can amount to 40% of the cost of treatment¹. Thus, technologies that alleviate the toxic side effects and increase the efficacy of chemotherapy are in great demand.

Nanoparticles (10 to 100 nanometers) provide state-of-the-art technology as vehicles used in detection, diagnosis, and treatment of cancer. When loaded with chemotherapeutic agents, nanoparticle delivery to cancerous tissues relative to healthy tissues may be favorably biased by size and through the attachment of targeting ligands to the surface of the particle. Dr. Steve Barry at Alnis BioSciences, Inc has recently developed a novel Magnetic Nanoparticle Hydro-Gel (MagNaGel™) platform (under the support of NCI NO1-CO-29009 and HHSN2612200411004C). This particle is comprised of a chemotherapeutic agent, iron oxide colloids, and targeting ligands². This particle platform has demonstrated high (greater than 10 wt %) chemotherapeutic loading, tumor-associated biomolecular binding, good magnetic susceptibility, and attractive toxicity and circulation profiles (see Appendix) in mouse models. These findings suggest that targeted MagNaGel™ can significantly increase efficacy and decrease toxicity in cancer treatment².

We hypothesize that platinum loaded MagNaGel™ particles containing specific targeting ligands, which have been identified through transcription profiling of different histological types of ovarian cancers when used in conjunction with diagnostic MRI, may play a key role in new and powerful ovarian cancer treatment regimens. We propose to: 1) develop orthotopic mouse models both with and without ascites to simulate human ovarian cancer, 2) perform biodistribution studies of the ligand-specific cisplatin loaded MagNaGels using these ovarian cancer mouse models and 3) evaluate efficacy and toxicity of selected ligand-specific cisplatin loaded MagNaGels particles.

Body:

Establishment of orthotopic ovarian cancer mouse models.

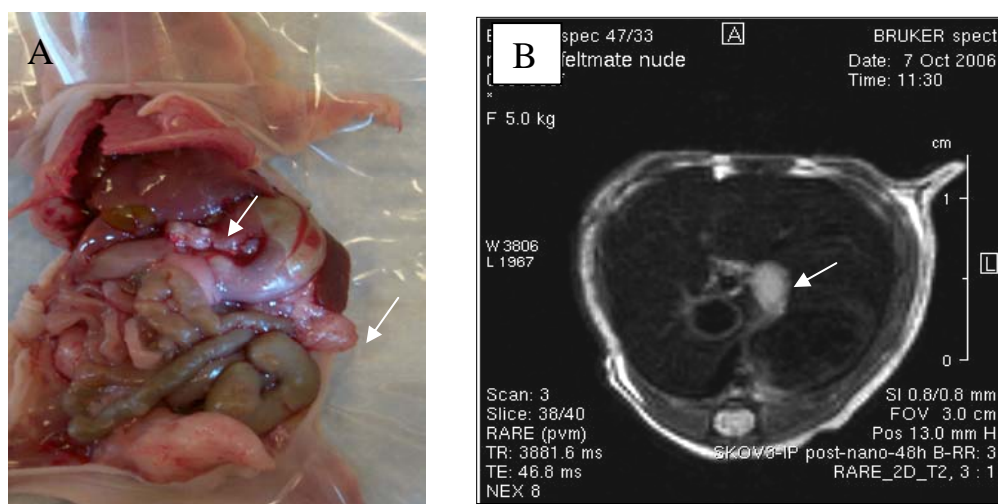


Fig. 1.(A) A photograph showing tumor masses developed in an athymic nu/nu mouse (arrows). (B) T2-weighted MRI images of the abdomen of the same mouse showing a tumor nodule (arrow) attached to the liver.

Athymic Nu/Nu female mice were utilized to establish orthotopic ovarian cancer mouse models. Both SKOV3 and HEYA8 ovarian cells were grown in tissue culture. 1×10^6 cells were utilized in 200 μ l intraperitoneal (IP) injection. The SKOV3 model was developed as a tumor model without ascitic fluid while HEYA8-injected mice rapidly developed both tumor and ascites. Figure 1 demonstrates an example of tumor-bearing mouse after SKOV3 injection. MRI was utilized to monitor development of tumors as weight was not as sensitive and indicator.

Accumulation of MagNaGel in tumor tissue and ascites in an orthotopic ovarian cancer mouse model

As a pilot study to localize the MagNaGel in an ascites-forming orthotopic ovarian cancer mouse model by MRI, mice were injected intraperitoneally with 1×10^6 ovarian cancer cells HeyA8. Tumor growth was monitored by a 4.7T small animal MRI (Bruker Daltonics, Billerica, MA) at the Harvard Medical School MRI Core Facility. After 17 days when tumor and ascites developed in the mice, 200 μ l of cisplatin-loaded MagNagel particles with 10.0 nm IO core (untargeted) were injected into the tail-vein of the cancer bearing mice. After 24 hr, MRI was performed on the mice. Iron oxide particle in the size range of MagNaGels are known as Ultrasmall Super-Paramagnetic Iron Oxide (USPIO) particles and typically darken compartments in which they are concentrated in T2-weighted images. Figure 2 shows tumor accumulation of MagNagel particles 24 hours after tail-vein injection. In addition, the lightened area in the T2-weighted images, which represented ascites in the pelvic and the abdomen, showed decreased in contrast compared to the surrounding organs after the injection of nanoparticles suggesting that presence of MagNagel particles in this compartment. Both kidneys and spleen did not show an increase in contrast. These results indicate the MagNaGel particles are effective contrast agents for MRI and the feasibility of using MRI to localize and quantify MagNagel particles in the orthotopic ovarian cancer mouse model.

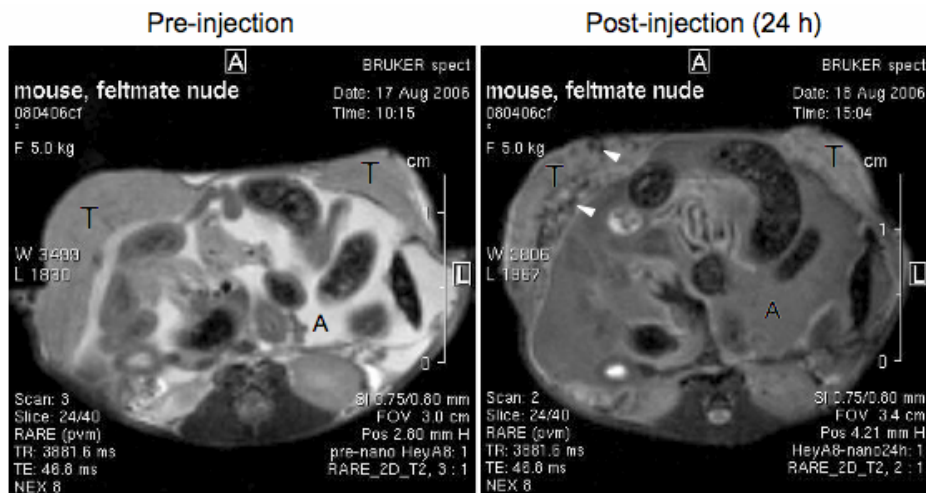


Fig. 2. T2-weighted MRI images of the mouse abdomen before, and 24 hours after injection of 200 μ l of a 20 mM Fe MagNaGel nanoparticle solution. FFE 3D minimum TE, partial echo, pulse sequence. Tumors (T) and ascites (A) darkened 24 hours after tail-vein injection. Arrow heads indicate accumulation of MagNaGel particles in tumor tissues.

Uptake of nanoparticles by tumor cells *in vitro*

To evaluate whether cisplatin-loaded MagNagel nanoparticles were up-taken by ovarian cancer cells *in vitro*, SKOV3 cells growing in 8-well chamber slides were treated with Cy5.5-labeled cisplatin-loaded MagNagel nanoparticles for 8, 16, and 24 hours. The results showed accumulation of Cy5.5 positive granules in the cells after 24 hours (Fig. 3) suggesting that MagNagel nanoparticles were uptaken by cells through the endocytotic process.

SKOV3

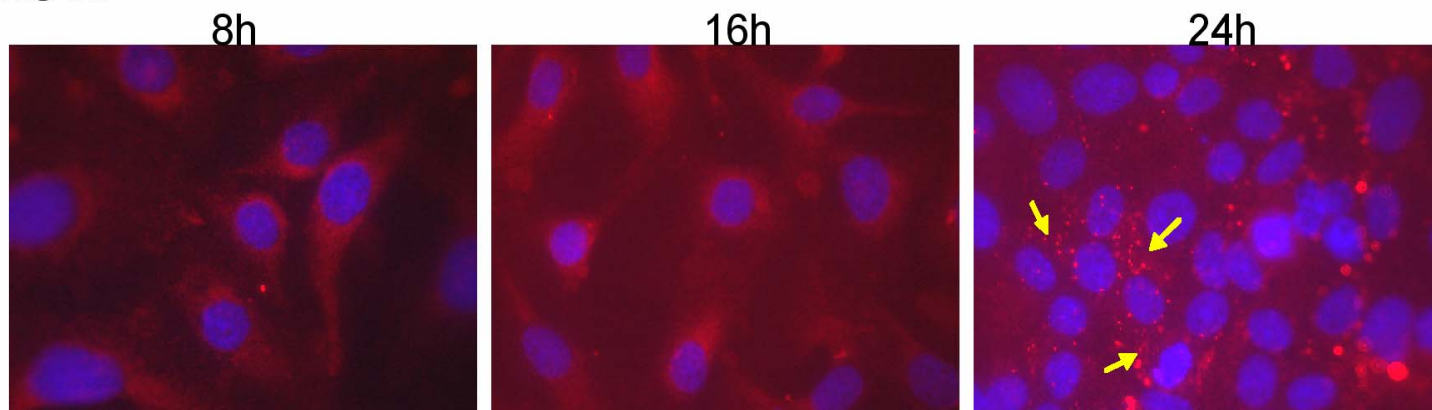


Fig. 3. Micrographs showing SKOV3 cells cultured in medium with Cy5.5 labeled MagNaGel. A total of 1×10^4 cells were seeded into each well of the 8-chambered slide. They were then treated with $10 \mu\text{l}$ of a 20 mM Fe MagNaGel nanoparticle solution or with control buffer in $200 \mu\text{l}$ of culture medium. At 8, 16, and 24 hours after treatment, cells were washed with PBS twice, stained with DAPI, and observed under a Leica DMIRE2 fluorescent microscope with the Cy5.5 filter cube set. Arrows indicate Cy5.5 positive granules accumulation in the cytoplasm of the cells. 200X

Biodistribution Study

The biodistribution of the labeled cisplatin nanoparticles was determined by using an orthotopic ovarian cancer mouse model. A total of 1×10^6 cells (OVCAR3) in $200 \mu\text{l}$ were introduced into each female nude mouse by IP injection. After 24-28 days elapsed, tumor was confirmed by MRI. Initial studies utilized 3 mice/group and these were injected intravenously (through tail-vein) with cisplatin-containing nanoparticles. At timepoints: 1hr, 6hr, 24 hr, 48 hr, 72 hr and 120hr mice were weighed, sacrificed, representative organs (e.g. liver, kidneys, heart, brain, and lung specimens), blood and tumor regions were removed/collected, snap-frozen and sectioned. Tissue was processed for platinum (Pt) levels. Results show an initial rapid peak and fall of blood levels. Tissue levels rose and declined more slowly in liver and lung. Findings of high levels in the spleen are under further investigation. We suspect that the splenic architecture facilitated accumulation of untargeted nanoparticles. Tumor tissue held fairly stable levels of cisplatin from 24-72 hours, much longer than that of blood. Kidney cisplatin levels remained low and cleared after 72 hours.

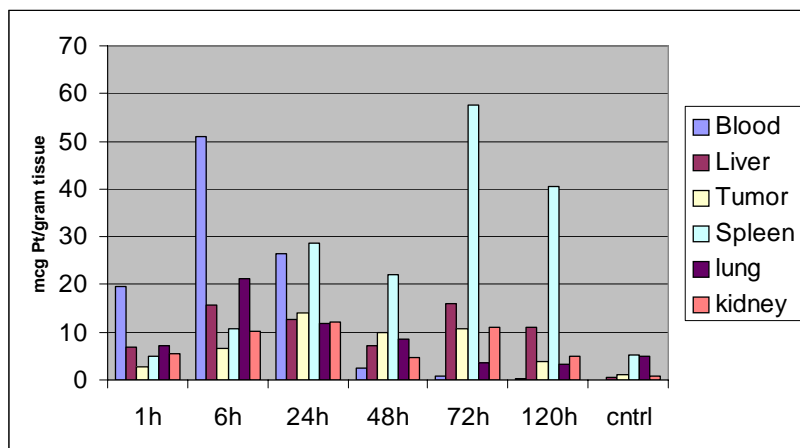
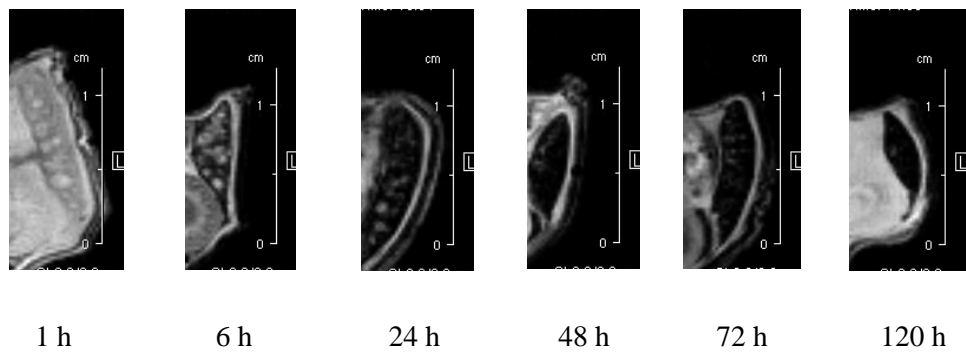


Fig. 4. Graphic illustration of cisplatin levels in tissue and blood for non-targeted nanoparticles. SKOV3 tumor-bearing mice were injected on Day 28 with untargeted cisplatin-containing nanoparticles. Mice were sacrificed at timepoints 1-, 6-, 24-, 48-, 72-, and 120-hour intervals.

MRI images below (Figure 5), correlate with tissue levels in Figure 4.

Spleen-2 / T2*

A.



Tumor / T2*

B.

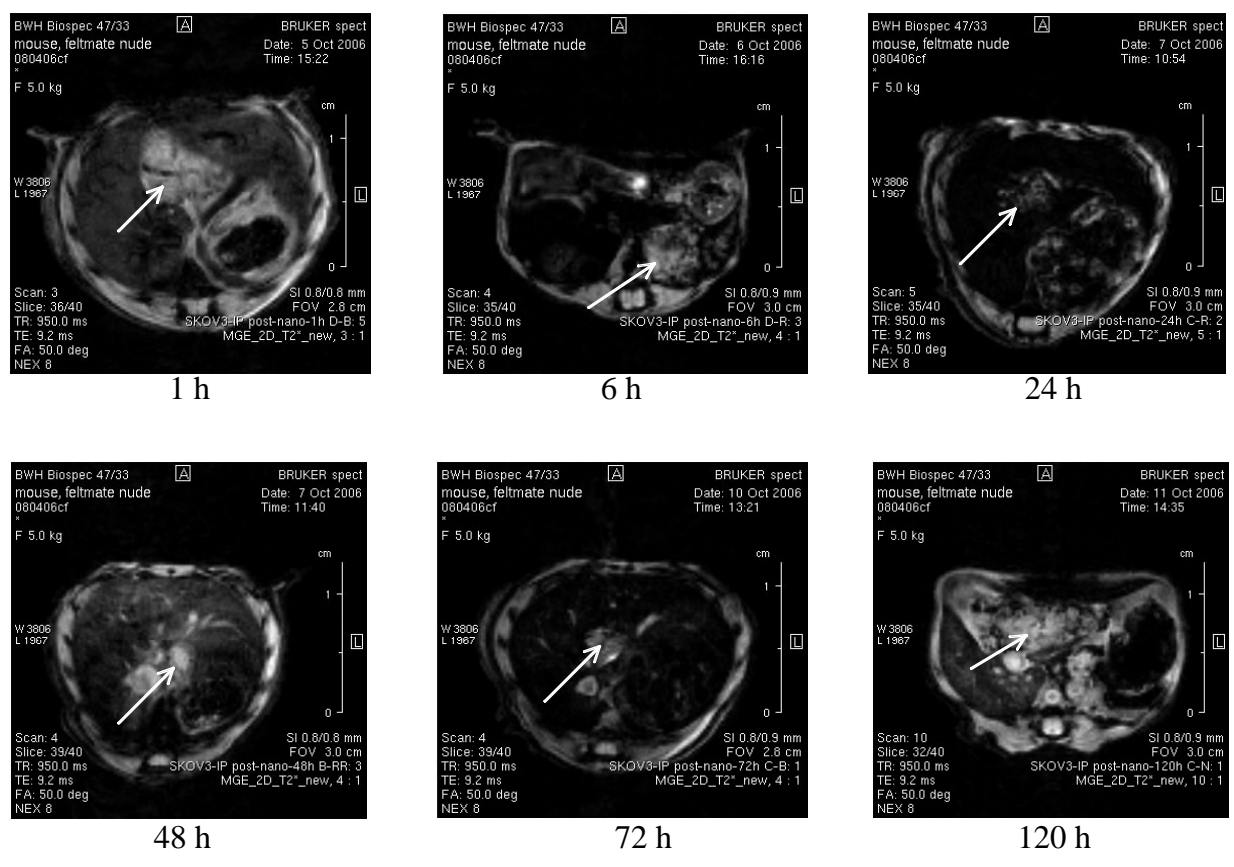


Figure 5. T2* -weighted MRI images of the (A) mouse spleen, and (B) tumor tissue (arrows) at different time points after MagNaGel injection.

Key Research Accomplishments:

- Two orthotopic ovarian cancer mouse models have been developed. One without ascites and one with both tumor and ascites
- MRI has been successfully utilized to document the development of tumor within our mouse model. It can also be utilized to follow nanoparticle distribution in various organs and tumor tissue.
- MRI images have been found to correlate with tissue and tumor cisplatin levels.

Reportable Outcomes:

- Data generated have been used for the application of an NIH R33 grant
- Data generated have been used for several smaller grants/funds. A Dana-Farber Friends grant was recently received in support of this work.

Conclusions:

Initial research has established a reliable orthotopic mouse model which can be consistently utilized in further research using nanoparticles. MRI has proved to be a valuable tool in documenting tumor development and following particle distribution in tumor and organs of interest. Further studies are underway utilizing targeted nanoparticles within our system. Specifically, anti-Her2 Fab will be attached to the MagNaGel particle for upcoming longitudinal and biodistribution studies.

In the second year of the grant, work will be aimed at identifying other ovarian cancer “targets” and working with Alnis to develop more specific targeted particles. Treatment efficacy and toxicity studies will be performed.

References:

1. Ojeda B, de Sande LM, Casado A, Merino P, Casado MA: Cost-minimisation analysis of pegylated liposomal doxorubicin hydrochloride versus topotecan in the treatment of patients with recurrent epithelial ovarian cancer in Spain, *Br J Cancer* 2003, 89:1002-1007
2. Bibby DC, Talmadge JE, Dalal MK, Kurz SG, Chytil KM, Barry SE, Shand DG, Steiert M: Pharmacokinetics and biodistribution of RGD-targeted doxorubicin-loaded nanoparticles in tumor-bearing mice, *Int J Pharm* 2005, 293:281-290

Appendices:

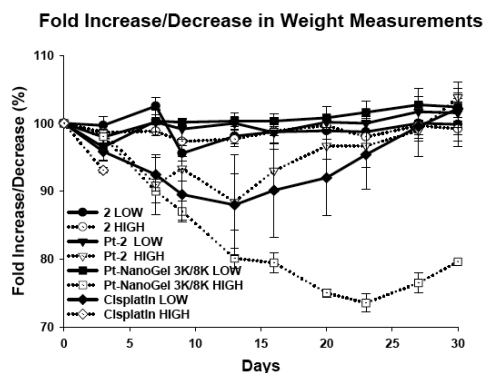


Fig. A1. Weight Measurements for mice dosed with formulations of MagNaGel (2) Pt-MagNaGel (Pt-2) a Pt-NanoGel formulation, and cisplatin, with each material dosed at a high (150 mcg Pt) and a low (50 mcg) dose. BALB/c mice, n=3 per group; tail vein injections were given on days 0, 2, 4, 7, and 9. The results showed that in the cisplatin high dose group all animals died within a day of the completion of their third dose. The low dose Pt-MagNaGel, Pt-2, was particularly well tolerated. Their diminished toxicity reflects an improved safety margin and possible enhancement of a therapeutic index.

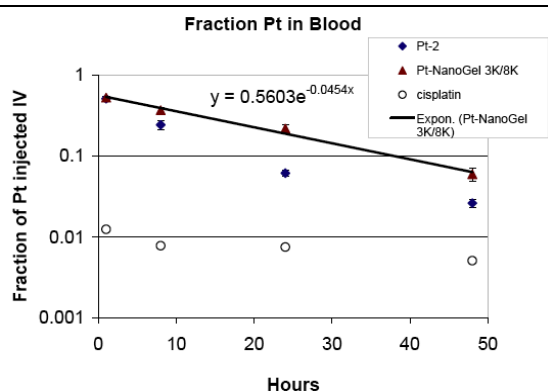


Fig. A2. Blood levels of Pt for two nanoparticle formulations and cisplatin. A single injection into the tail vein was given for each mouse at Hour 0. An exponential fit is shown for the Pt-NanoGel formulation. The results showed that nanoparticle formulations have extended circulation compared to cisplatin. Approximately half of the MagNaGel formulation remains in circulation after one hour. For the Pt-NanoGel formulation, the data from 1 to 24 hours (the beta phase, or elimination phase) is well-fit by an exponential decay with a 22 hour half life. This extended circulation time is promising for tumor accumulation in future studies using tumor bearing mouse models.