

**FINAL REPORT
August 2008**

REPORT NO. 08-14A



**ENGINEERING EVALUATION TESTS
OF
16 GAUGE VS 14 GAUGE STAPLES IAW MIL-STD-1660,
40MM CARTRIDGE ON WOODEN PALLET**

Prepared for:

Distribution Unlimited

ARDEC
Logistics Research and Engineering Directorate
AMSRD-AAR-AIL-TP(R)
Rock Island, IL 61299-7300



**DEFENSE AMMUNITION CENTER
VALIDATION ENGINEERING DIVISION
MCALESTER, OKLAHOMA 74501-9053**

20081024105

AVAILABILTY NOTICE

A copy of this report will be furnished each attendee on automatic distribution. Additional copies or authority for reprinting may be obtained by written request from:

Director
U.S. Army Defense Ammunition Center
ATTN: SJMAC-DEV
1 C Tree Road, Bldg. 35
McAlester, OK 74501-9053

DISTRIBUTION INSTRUCTIONS

Destroy this report when no longer needed. Do not return.

Citation of trade names in this report does not constitute an official endorsement.

The information contained herein will not be used for advertising purposes.

**ENGINEERING EVALUATION TESTS
OF 16 GAUGE VS 14 GAUGE STAPLES IAW MIL-STD-1660,
40MM CARTRIDGE ON WOODEN PALLET**

ABSTRACT

The U.S. Army Defense Ammunition Center (DAC), Validation Engineering Division (SJMAC-DEV) was tasked by Armament Research, Development and Engineering Center (ARDEC/AMSRD-AAR-AIL-TP[R]) to conduct Engineering Evaluation Tests IAW MIL-STD-1660, "Design Criteria for Ammunition Unit Loads" on the use of 16 gauge staples vs 14 gauge staples. The unit load tested simulated 40MM cartridges, packed 32 per PA120 metal container, and unitized 48 containers per 40" x 48" pallet. Three test units were tested with a load of 2,910 lbs, 2,915 lbs, and 2,915 lbs. The testing accomplished on the test units was the Stacking, Repetitive Shock, Edgewise-Rotational Drop, Incline-Impact, Forklifting, and Disassembly Tests. Test Units #1 and #2 were unitized using 16 gauge staples holding the wooden gates in place, while Test Unit #3 was unitized using the existing requirement of 14 gauge staples holding the gates in place.

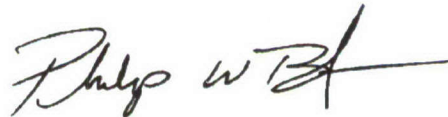
Test Unit #1 was tested using the proposed 16 gauge staple in accordance with MIL-STD-1660 at ambient temperature. No damage was noted during the Stacking, Repetitive Shock, Edgewise-Rotational Drop, Forklifting, and Disassembly Testing. During all of the Incline-Impact tests, the optional timber was employed which extended approximately 9 inches above the carriage. It was noted that two (2) staples on opposite sides of the test unit partially disengaged. The test unit remained intact and all testing was completed with no further damage noted. Test Unit #2, utilizing the proposed 16 gauge staples, was tested similarly to Test Unit #1. No damage was noted during the Stacking, Repetitive Shock, Edgewise-Rotational Drop, Forklifting, and Disassembly Testing. However, during the Incline-Impact testing, one (1) leg each of four (4) staples (the two bottom staples on each side) partially pulled out of the gates. Test Unit #2 remained intact and all testing was completed with no further

damage noted. Test Unit #3 was tested using the existing requirement of 14 gauge staples. MIL-STD-1660 testing was completed with one (1) staple each on opposite sides being disengaged. Test Unit #3 was tested using the proposed 16 gauge staples as used for Test Unit #1. No damage was noted during the Stacking, Repetitive Shock, Edgewise-Rotational Drop, Forklifting, and Disassembly Testing. Incline-Impact testing resulted in the partial pull-out of one (1) staple on one side and the complete loss of one (1) staple on the opposite corner of the pallet unit.

The result of the staples being disengaged did not differ significantly between the use of the 14 gauge or 16 gauge staples. The use of 16 gauge staples on the 40MM cartridges packed 32 per PA120 metal container and unitized 48 containers per 40" x 48" pallet, as simulated for testing, meets the requirements of MIL-STD-1660 and can be utilized by the United States Army.

Prepared by:

Reviewed by:



Walter Gordon
General Engineer

Phil Barickman
Chief (Acting), Validation Engineering Division

**U.S. ARMY DEFENSE AMMUNITION CENTER
VALIDATION ENGINEERING DIVISION
MCALESTER, OK 74501-9053**

REPORT NO. 08-14A

**ENGINEERING EVALUATION TESTS
FOR
16 GAUGE VS 14 GAUGE STAPLES IAW MIL-STD-1660,
40MM CARTRIDGE ON WOODEN PALLET**

TABLE OF CONTENTS

PART	PAGE NO.
1. INTRODUCTION	1-1
A. BACKGROUND	1-1
B. AUTHORITY	1-1
C. OBJECTIVE	1-1
D. CONCLUSION	1-1
2. ATTENDEES	2-1
3. TEST PROCEDURES	3-1
4. TEST EQUIPMENT	4-1
5. TEST RESULTS	5-1
6. DRAWINGS.....	6-1

PART 1 – INTRODUCTION

A. BACKGROUND. The U.S. Army Defense Ammunition Center (DAC), Validation Engineering Division (SJMAC-DEV) conducted Engineering Evaluation Tests IAW MIL-STD-1660, “Design Criteria for Ammunition Unit Loads” on the use of 16 gauge staples vs 14 gauge staples. The unit load tested simulated 40MM cartridges, packed 32 per PA120 metal container, and unitized 48 containers per 40” x 48” pallet. Three test units were evaluated with a load of 2,910 lbs, 2,915 lbs, and 2,915 lbs. The Stacking, Repetitive Shock, Edgewise-Rotational Drop, Incline-Impact, Forklifting, and Disassembly Tests were conducted on the test units. Test Units #1 and #2 were unitized using 16 gauge staples holding the wooden gates in place, while Test Unit #3 was unitized using the existing requirement of 14 gauge staples holding the gates in place. The unitization procedures were provided by DAC, Transportation Engineering Division (SJMAC-DET).

B. AUTHORITY. This test was conducted IAW mission responsibilities delegated by the U.S. Army Joint Munitions Command (JMC), Rock Island, IL. Reference is made to the following:

1. AR 740-1, 9 September 2002, Storage and Supply Activity Operation.
2. JMC-R, 10-23, Mission and Major Functions of U.S. Army Defense Ammunition Center (DAC) 12 April, 2007.

C. OBJECTIVE. The objective of the tests was to determine if the 16 gauge staples could be utilized in lieu of the required 14 gauge staples on the 40 MM cartridge packed 32 per PA120 metal container, and unitized 48 containers per 40” x 48” pallet, by meeting MIL-STD-1660 test requirements prior to the acceptance of the unitization procedures by the U.S. Army.

D. CONCLUSION. The result of the staples being disengaged did not differ significantly between the use of the 14 gauge or 16 gauge staples. The use of 16 gauge staples on the 40 MM cartridge packed 32 per PA120 metal container, and unitized 48 containers per 40" x 48" pallet, as simulated for testing, meets the requirements of MIL-STD-1660 and can be utilized by the United States Army.

PART 2 - ATTENDEES

DATE PERFORMED:

Test Unit #1- June 19 and 25, 2008

Test Unit #2- June 25-26, 2008

Test Unit #3- June 27, 2008

ATTENDEE

Walter Gordon
General Engineer
DSN 956-8077
(918) 420-8077

Daryl Sieczkowski
Electronics Technician
DSN 956-8988
(918) 420-8988

MAILING ADDRESS

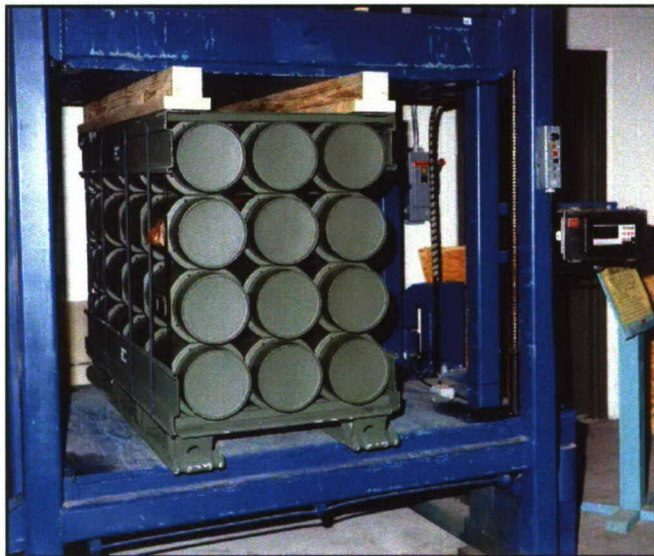
Director
U.S. Army Defense Ammunition Center
ATTN: SJMAC-DEV
1 C Tree Road, Bldg. 35
McAlester, OK 74501-9053

Director
U.S. Army Defense Ammunition Center
ATTN: SJMAC-DEV
1 C Tree Road, Bldg. 35
McAlester, OK 74501-9053

PART 3 - TEST PROCEDURES

A. MIL-STD-1660 TEST. The test procedures outlined in this section were extracted from MIL-STD-1660. The tests are conducted on ammunition pallet units or unit loads and are summarized as follows:

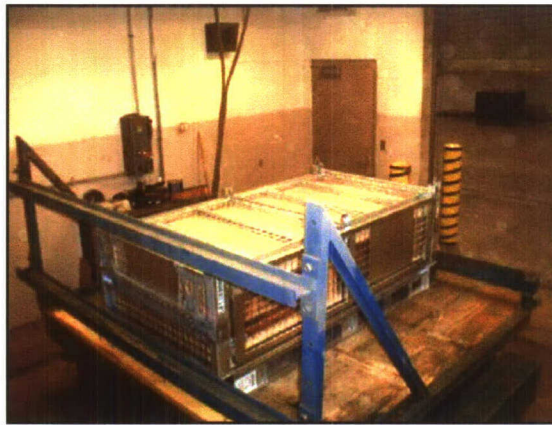
1. STACKING TEST. The test unit will be tested to simulate a stack of identical items stacked 16 feet high, for a period of one hour. This stacking load will be simulated by subjecting the specimen to a compression weight equal to an equivalent 16-foot stacking height. Photo 1 below shows an example of a unit load in the compression tester.



**Photo 1. Example of Stacking Test.
(2.75-inch Hydra 70, PA151 Rocket Pallet in the Stacking Test.)**

2. REPETITIVE SHOCK TEST. The repetitive shock test is conducted IAW Method 5019, Federal Standard 101. The test procedure is as follows: The test unit will be placed on (not fastened to) the platform. With the test unit in one position, the platform will be vibrated at ½-inch amplitude (1-inch double amplitude) starting at a frequency of approximately 3 cycles-per-

second. The frequency will be steadily increased until the specimen leaves the platform. The resonant frequency is achieved when a 1/16-inch-thick feeler gage momentarily slides freely between every point on the specimen in contact with the platform at some instance during the cycle. Midway into the testing period, the specimen will be rotated 90 degrees, and the test continued for the duration. Unless failure occurs, the total time of vibration will be three hours. Photo 2 shows an example of the repetitive shock test.



**Photo 2. Example of the Repetitive Shock Test.
(MSTF Low)**

3. EDGEWISE-ROTATIONAL DROP TEST. This test is conducted using the procedures of Method 5008, Federal Standard 101. The procedure for the edgewise rotational drop test is as follows: The test unit will be placed on its skids with one end of the pallet supported on a beam 6 inches high. The height of the beam will be increased as necessary to ensure that there is no support for the skids between the ends of the specimen when the dropping takes place, but should not be high enough to cause the specimen to slide on the supports when the dropped end is raised for the drop. The unsupported end of the specimen is then raised and allowed to fall freely to the concrete, pavement, or similar unyielding surface from a prescribed height. Unless otherwise specified, the height of drop for level A protection will conform to the following tabulation:

GROSS WEIGHT (WITHIN RANGE LIMITS) (Pounds)	DIMENSIONS OF ANY EDGE, HEIGHT OR WIDTH (WITHIN RANGE LIMITS) (Inches)	HEIGHT OF DROPS ON EDGES	
		Level A (Inches)	Level B (Inches)
150-250	60-66	36	27
250-400	66-72	32	24
400-600	72-80	28	21
600-1,000	80-95	24	18
1,000-1,500	95-114	20	16
1,500-2,000	114-144	17	14
2,000-3,000	Above 145- No limited	15	12
Above – 3,000		12	9

Figure 1.



Photo 3. Example of Edgewise Rotational Drop Test (MSTF Low)

4. **INCLINE-IMPACT TEST.** This test is conducted by using the procedure of Method 5023, Incline-Impact Test of Federal Standard 101. The procedure for the incline-impact test is as follows: The test unit will be placed on the carriage with the surface or edge to be impacted projecting at least 2 inches beyond the

front end of the carriage. The carriage will be brought to a predetermined position on the incline and released. If it were desired to concentrate the impact on any particular position on the container, a 4- x 4-inch timber may be attached to the bumper in the desired position before the test. The carriage will not strike any part of the timber. The position of the specimen on the carriage and the sequence in which surfaces and edges are subjected to impacts may be at the option of the testing activity and dependent upon the objective of the test. When the test is to determine satisfactory requirements for a container or pack, and, unless otherwise specified, the specimen will be subjected to one impact on each surface that has each dimension less than 9.5 feet. Unless otherwise specified, the velocity at the time of the impact will be 7 feet-per-second. Photo 4 shows an example of this test.



**Photo 4. Example of the Incline-Impact Test.
(2.75-Inch, Hydra 70, PA151 Rocket Pallet on incline-impact tester.)**

5. SLING COMPATIBILITY TEST. The test unit utilizing special design or non-standard pallets will be lifted, swung, lowered and otherwise handled as necessary, using slings of the types normally used for handling the unit loads under consideration. Slings will be easily attached and removed. Danger of

slippage or disengagement when load is suspended will be cause for rejection of the specimen.

6. **FORKLIFTING TESTS.** The test unit will be lifted clear of the ground by a forklift from the end of the test unit and transported on the forks in the level or back-tilt position. The forklift will pass over the Optional Rough Handling Course For Forklift Trucks as outlined in MIL-STD-1660. The course will consist of parallel pairs of 1-inch boards spaced 54 inches apart and will be laid flat wise on the pavement across the path of the forklift. One pair will be laid at an angle of approximately 60 degrees to the path so that the left wheel strikes first. Another pair will be laid securely across the path of the forklift so that the wheels strike simultaneously. Another pair will be laid at an angle of approximately 75 degrees to the path so that the right wheel strikes first. The test unit will be transported over the Optional Rough Handling Course. The test unit shall be observed for deflection and damage. The test unit will be rotated 90 degrees and the test unit lifted from the side and the above steps repeated.

7. **DISASSEMBLY TEST.** Following all rough handling tests the test unit may be squared up within 2 inches of its original shape and on a flat level surface. The strapping will then be cut and removed from the palletized load. Assembly of the test unit will be such that it retains its unity upon removal of the strapping.

PART 4 - TEST EQUIPMENT

A. COMPRESSION TESTER.

- | | |
|-----------------------|----------------------|
| 1. Manufacturer: | Ormond Manufacturing |
| 2. Platform: | 60- x 60-inches |
| 3. Compression Limit: | 50,000 pounds |
| 4. Tension Limit: | 50,000 pounds |

B. TRANSPORTATION SIMULATOR (REPETITIVE SHOCK).

- | | |
|------------------|---------------------|
| 1. Manufacturer: | Gaynes Laboratory |
| 2. Capacity: | 6,000-pound payload |
| 3. Displacement: | 1/2-inch amplitude |
| 4. Speed: | 50 to 400 RPM |
| 5. Platform: | 5- x 8-foot |

C. INCLINED PLANE.

- | | |
|------------------|--------------------|
| 1. Manufacturer: | Conbur Incline |
| 2. Type: | Impact Tester |
| 3. Grade: | 10 percent incline |
| 4. Length: | 12-foot |

PART 5 - TEST RESULTS

5.1. TEST UNIT DATA. The test unit was inertly loaded to the specified design weight using inert materials. The test unit was prepared using the unitization procedures specified in Part 6 – Drawings. Special care was taken to ensure that each PA120 metal container had the proper amount of weight in order to achieve a realistic pallet unit center of gravity (CG). Once properly prepared, Test Units #1, #2, and #3 were tested using MIL-STD-1660 requirements. Photo 5 shows a typical test unit. Photo 6 shows the 16 gauge staple versus the 14 gauge staple.

TEST UNIT #1:

Test Date:	19, 25 June 2008	<u>Pallet inertly loaded with:</u>
Weight:	2,910 pounds	48 PA120 metal containers
Length:	51 inches	loaded to 58 pounds each
Width:	40 inches	with inert material,
Height:	36 1/8 inches	16 gauge staples in gates

TEST UNIT #2:

Test Date:	25-26 June 2008	<u>Pallet inertly loaded with:</u>
Weight:	2,915 pounds	48 PA120 metal containers
Length:	51 inches	loaded to 58 pounds each
Width:	40 inches	with inert material,
Height:	36 1/8 inches	16 gauge staples in gates

TEST UNIT #3:

Test Date:	27 June 2008	<u>Pallet inertly loaded with:</u>
Weight:	2,915 pounds	48 PA120 metal containers
Length:	51 inches	loaded to 58 pounds each
Width:	40 inches	with inert material,
Height:	36 1/8 inches	14 gauge staples in gates

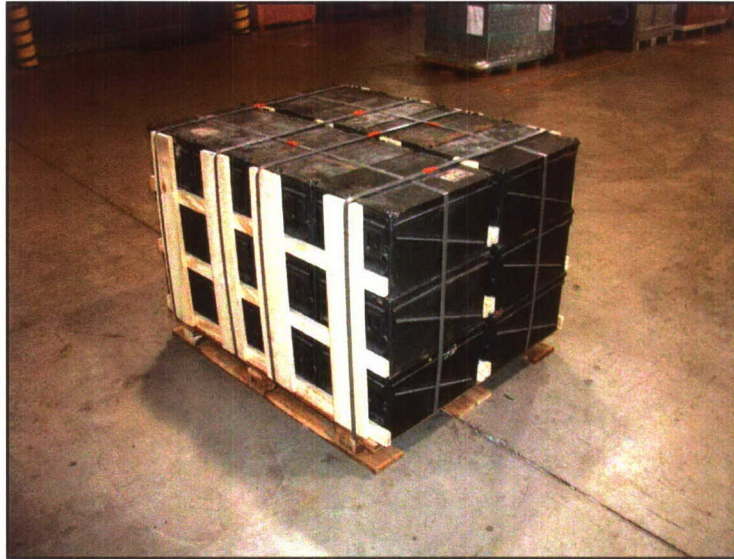


Photo 5. Photo of Test Unit #1.

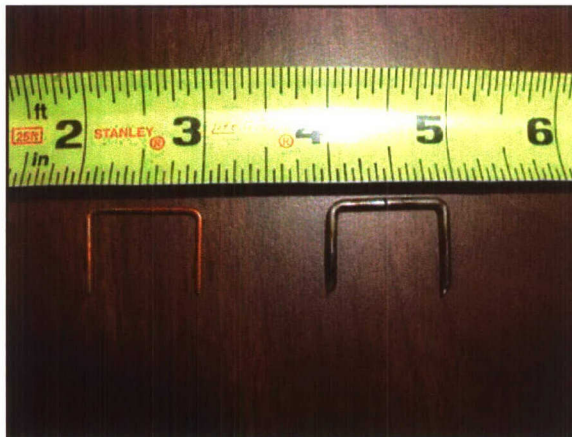


Photo 6. 16 Gauge Staple (left) and 14 Gauge Staple (right).

A. MIL-STD-1660 TEST RESULTS - TEST UNIT #1:

1. **STACKING TEST.** The test unit was compressed with a load force of 11,640 pounds for 60 minutes on 19 June 2008. No damage was noted as a result of this test. See Photo 7 for the test unit in the compression tester.



Photo 7. Test Unit #1 in the Stacking Test.

2. **REPETITIVE SHOCK TEST.** The test unit was vibrated 90 minutes at 194 RPM in the longitudinal orientation and 90 minutes at 205 RPM in the lateral orientation on 19 June 2008. No damage was noted as a result of this test. Photo 8 shows the test unit on the vibration platform.



Photo 8. Test Unit #1 During Repetitive Shock Testing.

3. **EDGEWISE-ROTATIONAL DROP TEST.** The test unit was edgewise-rotationally dropped from a height of 15 inches on both longitudinal sides and both lateral sides. No significant damage was noted as a result of this test. Photo 9 shows the test unit during the Edgewise-Rotational Drop Test.

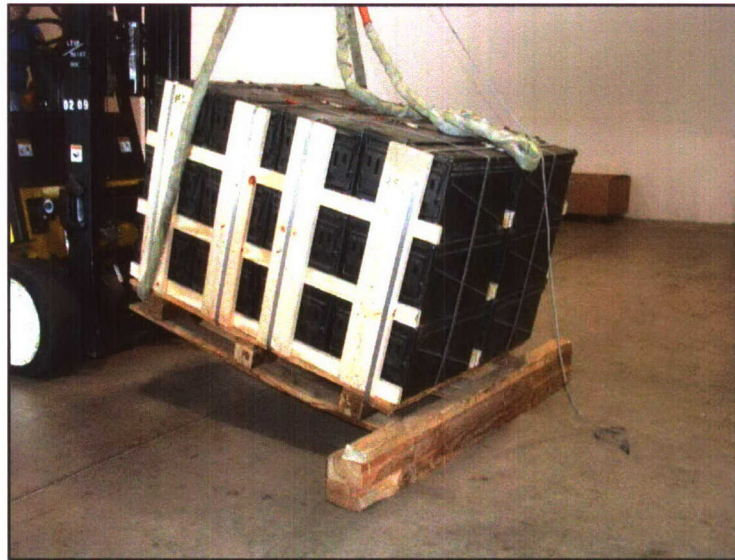


Photo 9. Edgewise Drop Test on Test Unit #1.

4. **INCLINE-IMPACT TEST.** The test unit was impact tested on both longitudinal sides and both lateral sides. During the Incline-Impact Tests, the optional timber was employed which extended approximately 9 inches above the carriage. It was noted that two (2) staples on opposite sides of the test unit partially disengaged. The test unit remained intact and all testing was completed with no further damage noted. See Photo 10 for the test unit during the lateral Incline-Impact Test and Photo 11 for one of the partially disengaged staples.

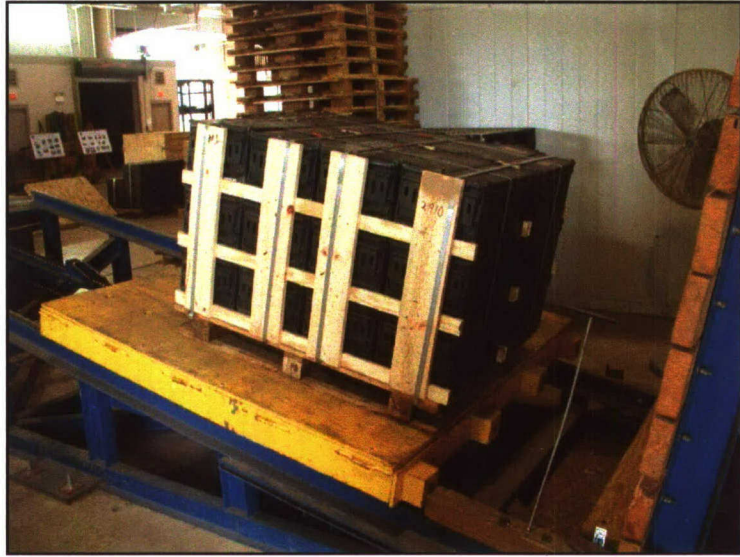


Photo 10. Incline-Impact Testing of the Test Unit #1.

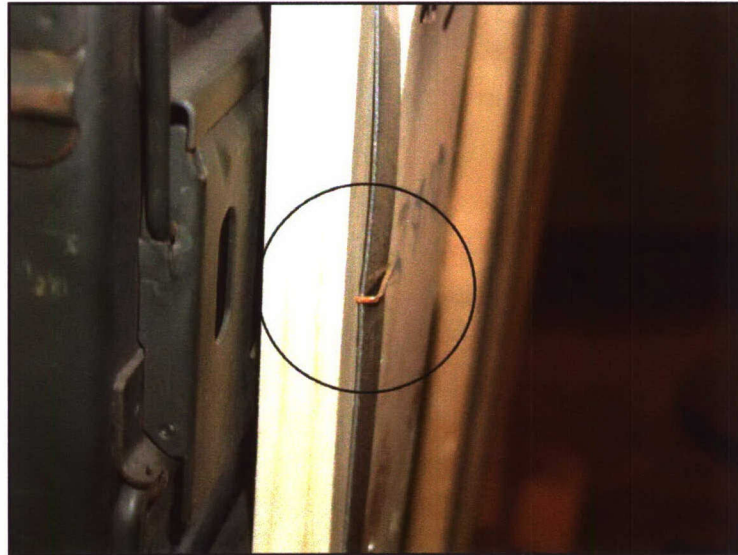


Photo 11. Partially Disengaged Staple During Incline-Impact Testing of the Test Unit #1.

5. SLING COMPATIBILITY TEST. N/A.

6. FORKLIFTING TEST. On 25 June, 2008 Test Unit #1 was lifted from the end of the pallet on the forks of the forklift truck and carried over the Hazard Course three times with no damage or instability noted. The test unit was lifted

from the adjacent side of the pallet and the above steps accomplished with no problems encountered. See Photo 12 for the test setup during the Forklifting Test.



Photo 12. Forklift Testing of Test Unit #1.

7. **DISASSEMBLY TEST.** Inspection revealed no damage.

8. **CONCLUSION.** No additional problems were encountered during the completion of the required testing. Test Unit #1 passed the requirements of the MIL-STD-1660.

B. MIL-STD-1660 TEST RESULTS TEST UNIT#2:

1. **STACKING TEST.** The test unit was compressed with a load force of 11,640 pounds for 60 minutes on 25 June 2008. No damage was noted as a result of this test.

2. **REPETITIVE SHOCK TEST.** The test unit was vibrated 90 minutes at 211 RPM in the longitudinal orientation and 90 minutes at 212 RPM in the lateral orientation on 26 June 2008. No damage was noted as a result of this test.

3. **EDGEWISE-ROTATIONAL DROP TEST.** The test unit was edgewise-rotationally dropped from a height of 15 inches on both longitudinal sides and both lateral sides. No significant damage was noted as a result of this test.

4. **INCLINE-IMPACT TEST.** The test unit was impact tested on both longitudinal sides and both lateral sides. During the Incline-Impact Tests, the optional timber was employed which extended approximately 9 inches above the carriage. It was noted that one (1) leg each of four (4) staples (the two bottom staples on each side) partially pulled out of the gates. The test unit remained intact and all testing was completed with no further damage noted. See Photo 13 for a typical disengaged staple.

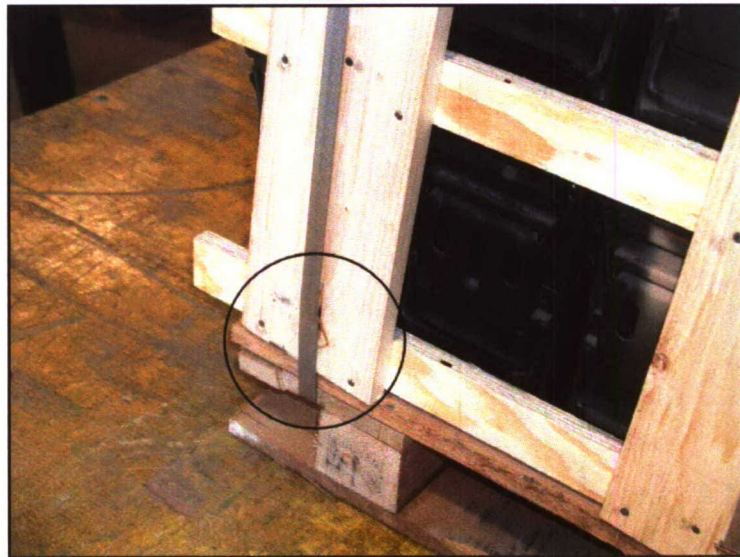


Photo 13. Disengaged Staple During Incline-Impact Testing on Test Unit #2.

5. **SLING COMPATIBILITY TEST.** N/A.

6. **FORKLIFTING TEST**. On 26 June, 2008 Test Unit #2 was lifted from the end of the pallet on the forks of the forklift truck and carried over the Hazard Course three times with no damage or instability noted. The test unit was lifted from the adjacent side of the pallet and the above steps accomplished with no problems encountered.

7. **DISASSEMBLY TEST**. Inspection revealed no damage.

8. **CONCLUSION**. No additional problems were encountered during the completion of the required testing. Test Unit #2 passed the requirements of the MIL-STD-1660.

C MIL-STD-1660 TEST RESULTS TEST UNIT#3.

1. **STACKING TEST**. The test unit was compressed with a load force of 11,640 pounds for 60 minutes on 27 June 2008. No damage was noted as a result of this test.

2. **REPETITIVE SHOCK TEST**. The test unit was vibrated 90 minutes at 203 RPM in the longitudinal orientation and 90 minutes at 207 RPM in the lateral orientation on 27 June 2008. No damage was noted as a result of this test.

3. **EDGEWISE-ROTATIONAL DROP TEST**. The test unit was edgewise-rotationally dropped from a height of 15 inches on both longitudinal sides and both lateral sides. No significant damage was noted as a result of this test.

4. **INCLINE-IMPACT TEST**. The test unit was impact tested on both longitudinal sides and both lateral sides. During the Incline-Impact Tests, the optional timber was employed which extended approximately 9 inches above the carriage. The testing resulted in the partial pull-out of one (1) staple on one side

and the complete loss of one (1) staple on the opposite corner of the pallet unit. The test unit remained intact and all testing was completed with no further damage noted. See Photo 14 for the disengaged staple.

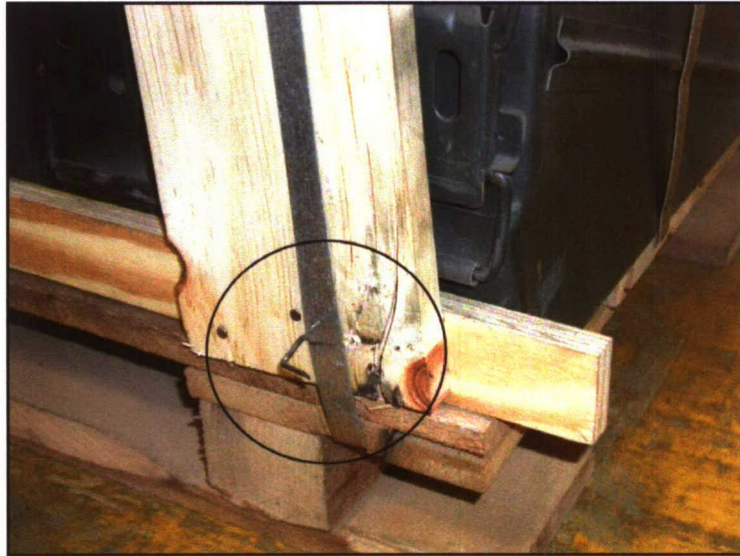


Photo 14. Disengaged Staple During Incline-Impact Testing on Test Unit #3.

5. SLING COMPATIBILITY TEST. N/A.

6. FORKLIFTING TEST. On 27 June, 2008 Test Unit #3 was lifted from the end of the pallet on the forks of the forklift truck and carried over the Hazard Course three times with no damage or instability noted. The test unit was lifted from the adjacent side of the pallet and the above steps accomplished with no problems encountered.

7. DISASSEMBLY TEST. Inspection revealed no damage.

8. CONCLUSION. No additional problems were encountered during the completion of the required testing. Test Unit #3 passed the requirements of the MIL-STD-1660.

Test Units #1, #2, and #3 had similar results during testing. The result of the staples being disengaged did not differ significantly between the use of the 14 gauge or 16 gauge staples. The use of 16 gauge staples on the 40MM cartridge packed 32 per PA120 metal container, and unitized 48 containers per 40" x 48" pallet, as simulated for testing, meets the requirements of MIL-STD-1660 and can be utilized by the United States Army.

PART 6– DRAWINGS

The following test sketches represent the load configuration that was subjected to the test criteria.

Note: A weight of approximately 58 lbs per container was used instead of the 45 lbs depicted in the drawing.

APPENDIX 26S

UNITIZATION PROCEDURES FOR BOXED AMMUNITION AND COMPONENTS ON 4-WAY ENTRY PALLETS

**CARTRIDGE, 40MM, PACKED 32 PER PA120
METAL CONTAINER, UNITIZED 48 CONTAINERS
PER 40" X 48" PALLET; APPROX BOX SIZE
18-3/4" L X 6-3/8" W X 10-3/8" H**

**NOTICE: THIS APPENDIX CANNOT STAND ALONE BUT MUST BE USED IN CONJUNCTION WITH
THE BASIC UNITIZATION PROCEDURES DRAWING 19-48-4116-20PA1002.**

DISTRIBUTION STATEMENT A:

**APPROVED FOR PUBLIC RELEASE;
DISTRIBUTION IS UNLIMITED.**

U.S. ARMY MATERIEL COMMAND DRAWING

<p style="text-align: center;">APPROVED, U.S. ARMY FIELD SUPPORT COMMAND</p> <p style="text-align: right;">TPR</p> <p style="text-align: center;"><i>David A. Piskovik</i></p> <p style="text-align: center; font-size: small;">AMSRD-AAR-AIL-TP</p>	<p>CAUTION: VERIFY PRIOR TO USE AT WWW.DAC.ARMY.MIL THAT THIS IS THE MOST CURRENT VERSION OF THIS DOCUMENT. THIS IS PAGE 1 OF 4.</p>			
<p style="text-align: center;">APPROVED BY ORDER OF COMMANDING GENERAL, U.S. ARMY MATERIEL COMMAND</p> <p style="text-align: center;"><i>[Signature]</i></p> <p style="text-align: center; font-size: small;">AMSFS-ST</p> <p style="text-align: center; font-size: small;">U.S. ARMY DEFENSE AMMUNITION CENTER</p>	<p>DO NOT SCALE</p>		<p>DECEMBER 1992</p>	
	ENGINEER OR TECHNICIAN	BASIC REV.	<p>SANDRA SCHULTZ</p> <p>PATRICK DOUGHERTY</p>	
	TRANSPORTATION ENGINEERING DIVISION	<p><i>Michael [Signature]</i></p>		
	VALIDATION ENGINEERING DIVISION	TESTED	<p><i>[Signature]</i></p>	
ENGINEERING DIRECTORATE	CLASS	DIVISION	DRAWING	FILE
	19	48	4116/ 26S	20PA1002

PALLET UNIT DATA				
ITEMS INCLUDED		● HAZARD CLASS AND DIVISION		APPROX WEIGHT LBS
NSN	DODIC	QD CLASS	COMP GROUP	
1310-				
01-362-5295	B542	1.1	E	2,148
01-362-5296	B542	1.1	E	2,148
01-419-9285	B542	1.1	E	2,148
01-361-9039	B576	1.4	C	2,292
01-362-5294	B584	1.4	C	2,292
01-464-4121	BA11			2,148
01-472-9871	BA12	1.4	C	2,148

● HAZARD CLASSIFICATION DATA CONTAINED IN THE ABOVE CHART IS FOR GUIDANCE AND INFORMATIONAL PURPOSES ONLY. VERIFICATION OF THE SPECIFIED DATA SHOULD BE MADE BY CONSULTING THE MOST RECENT JOINT HAZARD CLASSIFICATION SYSTEM LISTING OR OTHER APPROVED LISTING(S).

REVISION

REVISION NO. 1, DATED AUGUST 1995, CONSISTS OF:

1. CHANGING DIMENSIONS ON END AND SPACER ASSEMBLIES.
2. ADDING GENERAL NOTES "J", "K", "L", AND "M" ON PAGE 3.

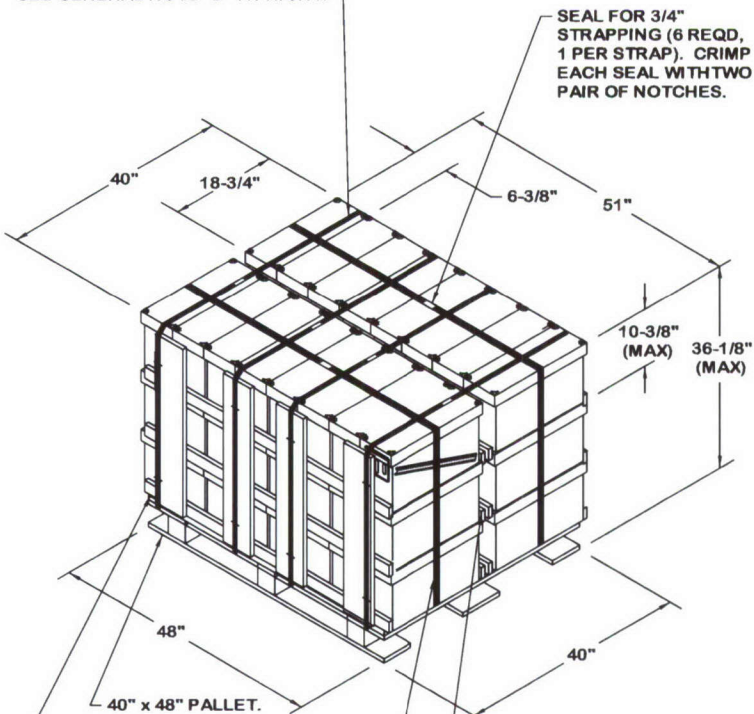
REVISION NO. 2, DATED DECEMBER 1999, CONSISTS OF:

ADDING A NATIONAL STOCK NUMBER AND ASSOCIATED DATA TO PALLET UNIT DATA BLOCK ON PAGE 2.

REVISION NO. 3, DATED DECEMBER 2004, CONSISTS OF:

ADDING A NATIONAL STOCK NUMBER AND ASSOCIATED DATA TO PALLET UNIT DATA BLOCK ON PAGE 2.

TIEDOWN STRAP, 3/4" X .035"
OR .031" X 12'-11" LONG STEEL
STRAPPING (4 REQD). STAPLE
TO END ASSEMBLIES AS SHOWN.
SEE GENERAL NOTE "D" AT RIGHT.



END ASSEMBLY (2 REQD). SEE
THE END ASSEMBLY DETAIL ON
PAGE 4. SEE GENERAL NOTES
"J" AND "K" AT RIGHT.

SPACER ASSEMBLY (1 REQD).
SEE THE SPACER ASSEMBLY
DETAIL ON PAGE 4. SEE
GENERAL NOTES "J" AND "K"
AT RIGHT.

SPACER ASSEMBLY (1 REQD).
SEE THE SPACER ASSEMBLY
DETAIL ON PAGE 4. SEE
GENERAL NOTES "J" AND "K"
AT RIGHT.

PALLET UNIT

SEE GENERAL NOTE "B" AT RIGHT

48 BOXES OF 40MM CTG (32 PER BOX) @ 45 LBS	---	2,160 LBS (APPROX)
DUNNAGE	---	52 LBS
PALLET	---	80 LBS
TOTAL WEIGHT	---	2,292 LBS (APPROX)
CUBE	---	42.7 CU FT (APPROX)

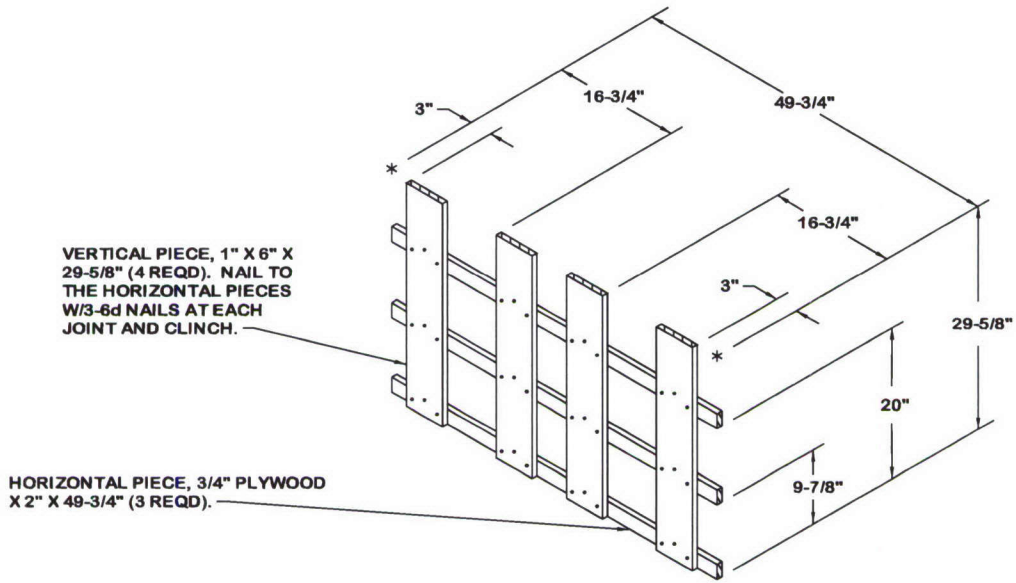
BILL OF MATERIAL

LUMBER	LINEAR FEET	BOARD FEET
1" x 4"	9.88	3.29
1" x 6"	19.75	9.88
NAILS	NO. REQD	POUNDS
6d (2")	72	0.42
10d (3")	36	0.55
PALLET, 40" X 48"	1 REQD	80 LBS
PLYWOOD, 3/4"	8.29 SQ FT REQD	17.10 LBS
STEEL STRAPPING, 3/4"	81.17' REQD	7.25 LBS
SEAL FOR 3/4" STRAPPING	6 REQD	NIL
STAPLE, 15/16" X 3/4"	16 REQD	NIL

load boxes up to
58.25# each to
make a total pallet
weight of 2928#

GENERAL NOTES

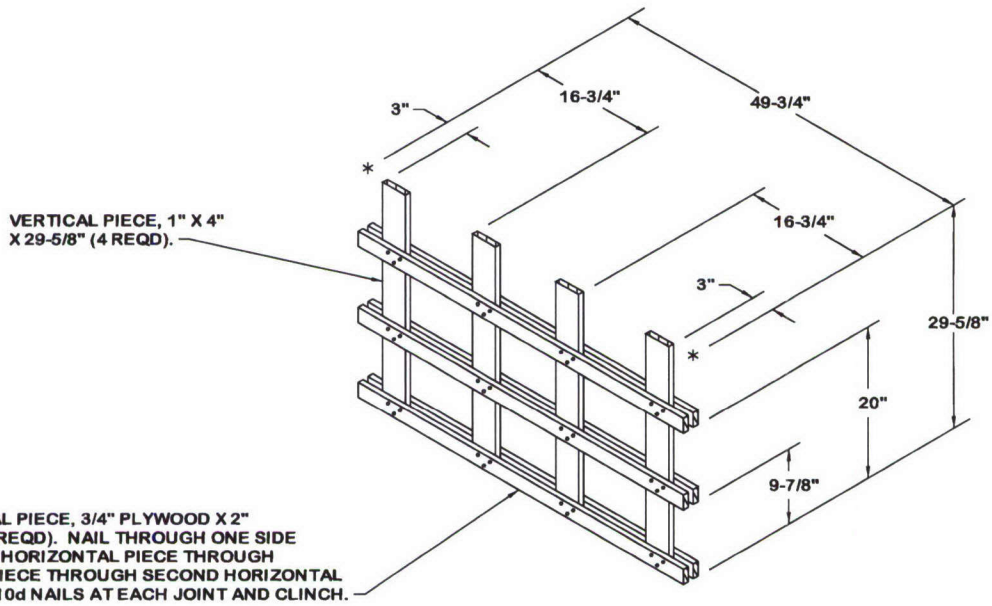
- A. THIS APPENDIX CANNOT STAND ALONE BUT MUST BE USED IN CONJUNCTION WITH THE BASIC UNITIZATION PROCEDURES DRAWING 19-48-4116-20PA1002. TO PRODUCE AN APPROVED UNIT LOAD, ALL PERTINENT PROCEDURES, SPECIFICATIONS AND CRITERIA SET FORTH WITHIN THE BASIC DRAWING WILL APPLY TO THE PROCEDURES DELINEATED IN THIS APPENDIX. ANY EXCEPTIONS TO THE BASIC PROCEDURES ARE SPECIFIED IN THIS APPENDIX.
- B. DIMENSIONS, CUBE AND WEIGHT OF A PALLET UNIT WILL VARY SLIGHTLY DEPENDING UPON THE ACTUAL DIMENSIONS OF THE BOXES AND THE WEIGHT OF THE SPECIFIC ITEM BEING UNITIZED.
- C. THE LOAD STRAPS MUST BE PRE-POSITIONED ON THE PALLET DECK PRIOR TO PLACING BOXES ON THE PALLET. NOTE THAT THE LOAD STRAPS WILL BE LOCATED AS SHOWN. LOAD STRAPS MUST BE TENSIONED AND SEALED PRIOR TO APPLICATION OF TIEDOWN STRAPS.
- D. INSTALL EACH TIEDOWN STRAP TO PASS UNDER THE DECK/STRINGER BOARDS OF THE PALLET AND TO BE LOCATED AS SHOWN.
- E. THE FOLLOWING AMC DRAWINGS ARE APPLICABLE FOR OUTLOADING AND STORAGE OF THE ITEMS COVERED BY THIS APPENDIX.
 - CARLOADING - - - - 19-48-4115-5PA1002
 - TRUCKLOADING - - - - 19-48-4117-11PA1003
 - STORAGE - - - - - 19-48-4118-1-2-3-4-14-22PA1002
 - END OPENING ISO CONTAINER - - - - 19-48-4153-15PA1002
 - MILVAN - - - - - 19-48-4166-15PA1003
 - SIDE OPENING ISO CONTAINER - - - - 19-48-4267-15PA1009
- F. IF ITEMS COVERED HEREIN ARE UNITIZED PRIOR TO ISSUANCE OF THIS REVISION TO THIS APPENDIX, THE BOXES NEED NOT BE REUNITIZED SOLELY TO CONFORM TO THIS REVISION.
- G. THE UNITIZATION PROCEDURES DEPICTED HEREIN MAY ALSO BE USED FOR UNITIZING 40MM CARTRIDGES WHEN IDENTIFIED BY DIFFERENT NATIONAL STOCK NUMBERS (NSN) THAN WHAT IS SHOWN ON PAGE 2, PROVIDED THE CONTAINER DOES NOT VARY FROM WHAT IS DELINEATED HEREIN. THE EXPLOSIVE CLASSIFICATION OF OTHER ITEMS MAY BE DIFFERENT THAN WHAT IS SHOWN.
- H. THE STYLE 1 PALLET DELINEATED IN THE DETAIL AT LEFT NEED NOT HAVE CHAMFERS OR STRAP SLOTS AS SPECIFIED WITHIN MILITARY SPECIFICATION MIL-P-15011 WHEN USED FOR THE UNITIZATION OF ITEMS COVERED BY THIS APPENDIX.
- J. DIMENSIONS OF THE SPACER AND END ASSEMBLIES ARE APPROXIMATE AND MUST BE VERIFIED IN ACCORDANCE WITH GENERAL NOTE "Z" IN THE BASIC PROCEDURES. THESE ASSEMBLIES MUST NOT PROTRUDE PAST THE TOPS AND/OR SIDES OF THE METAL CONTAINERS. THEY MAY BE SHORTER, PROVIDED THE TIEDOWN STRAPS, ARE PREVENTED FROM DAMAGING THE EDGES OF THE CANS AND ARE NOT IN CONTACT WITH THE STACKING AIDS ON THE CAN LID. THE HORIZONTAL PIECES MUST FIT AGAINST THE BODY OF THE CAN AND MUST NOT BEAR AGAINST THE HANDLE OR LATCH ASSEMBLY.
- K. ALL DUNNAGE SHALL BE PRESERVATIVE TREATED IN ACCORDANCE WITH GENERAL NOTE "AA" IN THE BASIC PROCEDURES.
- L. FOR DETAILS OF THE METAL CONTAINER SEE DRAWING NUMBER 12564414.
- M. EMPTY OR REJECT PA120 CONTAINERS WILL BE USED AS FILLER CONTAINERS AS NECESSARY. FILLER CONTAINERS MUST BE INSTALLED IN THE MIDDLE OF THE TOP LAYER(S) OF CONTAINERS. WHEN (EMPTY) FILLER CONTAINERS ARE USED IN PLACE OF OMITTED CONTAINERS TO COMPLETELY FILL OUT A LAYER ON A PALLET, THEY WILL BE MARKED AS SPECIFIED IN MIL-STD-129-1.



END ASSEMBLY

(2 REQD)

SEE GENERAL NOTES "J" AND "K" ON PAGE 3.



SPACER ASSEMBLY

(1 REQD)

SEE GENERAL NOTES "J" AND "K" ON PAGE 3.