

Report Documentation Page

Form Approved
OMB No. 0704-0188

Public reporting burden for the collection of information is estimated to average 1 hour per response, including the time for reviewing instructions, searching existing data sources, gathering and maintaining the data needed, and completing and reviewing the collection of information. Send comments regarding this burden estimate or any other aspect of this collection of information, including suggestions for reducing this burden, to Washington Headquarters Services, Directorate for Information Operations and Reports, 1215 Jefferson Davis Highway, Suite 1204, Arlington VA 22202-4302. Respondents should be aware that notwithstanding any other provision of law, no person shall be subject to a penalty for failing to comply with a collection of information if it does not display a currently valid OMB control number.

1. REPORT DATE SEP 2008		2. REPORT TYPE		3. DATES COVERED 00-00-2008 to 00-00-2008	
4. TITLE AND SUBTITLE ASC Distribution Management Center (DMC) Provides Materiel Management Capability				5a. CONTRACT NUMBER	
				5b. GRANT NUMBER	
				5c. PROGRAM ELEMENT NUMBER	
6. AUTHOR(S)				5d. PROJECT NUMBER	
				5e. TASK NUMBER	
				5f. WORK UNIT NUMBER	
7. PERFORMING ORGANIZATION NAME(S) AND ADDRESS(ES) Army Acquisition, Logistics & Technology (AT&L),9900 Belvoir Road Suite 101,Fort Belvoir,VA,22060-5567				8. PERFORMING ORGANIZATION REPORT NUMBER	
9. SPONSORING/MONITORING AGENCY NAME(S) AND ADDRESS(ES)				10. SPONSOR/MONITOR'S ACRONYM(S)	
				11. SPONSOR/MONITOR'S REPORT NUMBER(S)	
12. DISTRIBUTION/AVAILABILITY STATEMENT Approved for public release; distribution unlimited					
13. SUPPLEMENTARY NOTES					
14. ABSTRACT					
15. SUBJECT TERMS					
16. SECURITY CLASSIFICATION OF:			17. LIMITATION OF ABSTRACT	18. NUMBER OF PAGES	19a. NAME OF RESPONSIBLE PERSON
a. REPORT unclassified	b. ABSTRACT unclassified	c. THIS PAGE unclassified			

ASC Distribution Management Center (DMC) Provides Materiel Management Capability

MAJ Tyler J. Stewart

The U.S. Army Sustainment Command (ASC), headquartered at Rock Island, IL, provides combat service support capability to Soldiers serving in CONUS and OCONUS units to ensure expeditionary warfighting readiness and leverage national logistics to sustain a transforming Army at war. The ASC DMC is the single interface for the synchronization and integration of logistical functions among Active Army units in CONUS, Army Commands, U.S. Army Forces Command (FORSCOM), FORSCOM Direct Reporting Units, Installation Management Command (IMCOM), Logistics Support Activity (LOGSA), and the Life Cycle Management Commands.

SPC William Moore, prescribed load list (PLL) clerk, inspects night vision goggles to ensure their serviceability. The DMC provides support to Army units' PLLs. (U.S. Army photo by 4th Brigade Combat Team, 10th Mountain Division Public Affairs.)

As a result of modularity and in support of Army Campaign Plan Decision Point 54, ASC serves as the CONUS Theater Support Command. Within the ASC, the DMC provides a national materiel management capability focused on combat readiness of units in support of the Army Force Generation (ARFORGEN) cycle through demand supported supply management; maintenance management and readiness support; Class (CL) VII (major end items such as launchers, tanks, mobile machine shops, and vehicles) asset visibility; and efforts to develop a Logistics Common Operating Picture (LCOP) for reset and Left-Behind Equipment (LBE).

Supply Management

As ASC's materiel management element, DMC is responsible for many of the materiel management functions previously performed by the former Division Materiel Management Centers/Corps Materiel Management Centers in CONUS. It accomplishes its

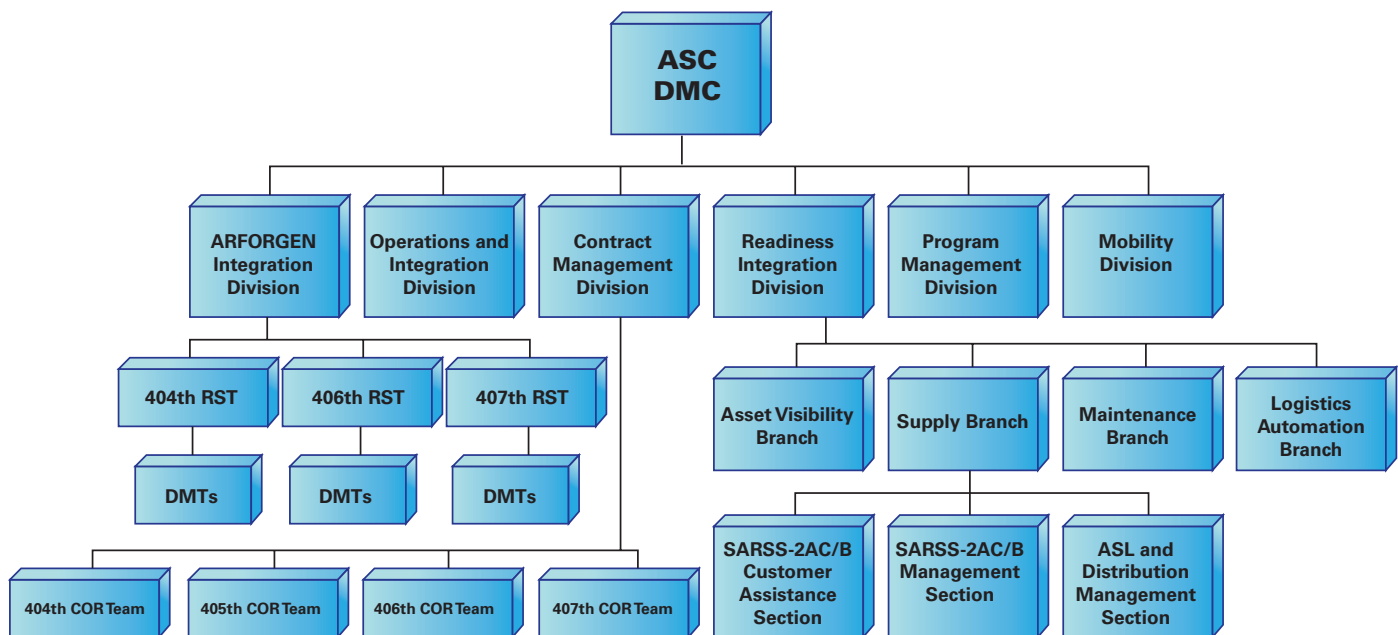
mission with an integrated team of Soldiers, government service employees, and contractors assigned to Rock Island, as well as forward-positioned Distribution Management Teams (DMTs) at 15 major Army installations throughout CONUS, Alaska, and Hawaii.

The DMC Readiness Integration Division's Supply Branch has responsibility for the operational planning, integration, and synchronization of demand-supported (CL II [clothing, individual equipment, etc.], III [petroleum, oil, lubricants, etc.], IV [construction materials], and IX [repair parts and components]) supply support in CONUS. The DMC provides Standard Army Retail Supply System (SARSS) 2AC/B customer assistance support for Routing Identifier Code-Geographic (RIC-GEO) parameter management, and performs SARSS-2AC/B management tasks. Additionally, the DMC assimilates end-to-end logistics data and produces actionable logistics intelligence for

readiness and materiel managers in support of ARFORGEN.

The DMC coordination network is far-reaching, as it works with sustainment brigade (SBDE) support operations officers and the IMCOM Directorate of Logistics managers for SARSS-1 activities, and, with the aid of its DMTs, supports tactical unit SARSS-1 operator elements at each installation. The DMC has oversight of 152 Supply Support Activities (SSA) across CONUS.

The current DMC structure provides the benefit of centralization, standardization, and stabilization of materiel management in CONUS. DMC support becomes particularly important with the continuous rotations of FORSCOM SBDEs in and out of theater. The DMC recognizes that to sustain Soldier skills, an SBDE at home station should be exercising the unit's organic mission capability to perform many of the SARSS-related materiel



ASL: Authorized Stockage List
 COR: Contracting Officer's Representative
 RST: Regional Support Team

ASC DMC Organization Chart



From ASC's DMC at Rock Island, Soldiers, Army civilians, and contractors synchronize logistics requirements of the ARFORGEN process. By matching global capacity and capability to logistics readiness requirements, the DMC ensures distributed and efficient workloading and delivery schedules. (U.S. Army photo by Ted Cavanaugh, E.L. Hamm and Associates.)

management tasks — the same as it would in theater. To support the SBDE effort, the DMC has partnered with FORSCOM G-4 to facilitate a left-seat/right-seat transition of designated materiel management tasks to the SBDE after it returns from deployment. The DMC/DMT will assume those same materiel management tasks back from the SBDE prior to its next deployment, thereby ensuring continuity of effort and uninterrupted support to the customer base. The transition of tasks to and from the DMC team and the SBDE are based upon the SBDE's ability to perform the tasks, as determined by the unit's commander. The goal is to meet mission and training proficiency needs of the SBDE in garrison, while maintaining ASC DMC responsibility for CONUS-based materiel management.

Maintenance Management and Readiness Support

As the single interface for the synchronization and integration of logistical functions among Active Army units in CONUS, the DMC integrates

maintenance and readiness goals with repair capabilities to meet ARFORGEN requirements. To accomplish the maintenance management and readiness support missions, the DMC uses tools such as the Automated Reset Management Tool and the workloading management process to ensure coordination and synchronization are tailored to support ARFORGEN goals.

Asset Visibility

The DMC provides worldwide CL VII asset visibility and management support for readiness, reset, LBE, and materiel management while advising and assisting with lateral transfer efforts to posture forces for the global war on terrorism and national emergencies throughout the ARFORGEN cycle. The DMC works with FORSCOM to validate equipment distribution plans to ensure units are able to meet ARFORGEN timeline requirements and provide asset visibility of the transportation pipeline to detect delays in movement. The CL VII Asset Visibility Section uses Property Book Unit Supply Enhanced, Force and Asset

Search Tool, and the Command Asset and Visibility Reporting Systems to provide asset visibility feeder reports in support of internal reset operations, asset queries to fill critical shortages, prepare data or reports for critical reset assets upon request, and monitor to provide recommendations on item classification and linkage.

COP

In an effort to leverage automation to provide an LCOP, the DMC initiated work with the LOGSA to mold the Logistics Information Warehouse into an automated tool supporting an LCOP focusing on unit readiness in all ARFORGEN cycle phases. Efforts include providing subject matter expert support to LOGSA on the development and implementation of Web-based tools to facilitate reset/LBE operations, maintenance workload coordination, SSA performance evaluations, and retrograde synchronization. The ASC DMC is the single Army national materiel manager for Active Army units in CONUS. In this role, DMC provides a national materiel management capability focused on combat readiness of units in support of the ARFORGEN through CL VII asset visibility, demand-supported supply management, maintenance management, and readiness support to reset and LBE. A key benefit derived from the current DMC structure is that it provides centralization, standardization, and stabilization of materiel management in CONUS.

MAJ TYLER J. STEWART serves as Regional Contract Management Team Lead in the DMC Contract Management Division. He holds a B.A. in scientific and technical communications from Bowling Green State University. As a Quartermaster Officer, he has also completed advanced training in logistics.