



Regional Planning R-2508 Complex

Tony Parisi
Head, Sustainability Office
NAVAIR Ranges
23 August 2004

Report Documentation Page

Form Approved
OMB No. 0704-0188

Public reporting burden for the collection of information is estimated to average 1 hour per response, including the time for reviewing instructions, searching existing data sources, gathering and maintaining the data needed, and completing and reviewing the collection of information. Send comments regarding this burden estimate or any other aspect of this collection of information, including suggestions for reducing this burden, to Washington Headquarters Services, Directorate for Information Operations and Reports, 1215 Jefferson Davis Highway, Suite 1204, Arlington VA 22202-4302. Respondents should be aware that notwithstanding any other provision of law, no person shall be subject to a penalty for failing to comply with a collection of information if it does not display a currently valid OMB control number.

1. REPORT DATE 01 AUG 2004	2. REPORT TYPE N/A	3. DATES COVERED -	
4. TITLE AND SUBTITLE Regional Planning R-2508 Complex		5a. CONTRACT NUMBER	
		5b. GRANT NUMBER	
		5c. PROGRAM ELEMENT NUMBER	
6. AUTHOR(S)		5d. PROJECT NUMBER	
		5e. TASK NUMBER	
		5f. WORK UNIT NUMBER	
7. PERFORMING ORGANIZATION NAME(S) AND ADDRESS(ES) Sustainability Office NAVAIR Ranges		8. PERFORMING ORGANIZATION REPORT NUMBER	
9. SPONSORING/MONITORING AGENCY NAME(S) AND ADDRESS(ES)		10. SPONSOR/MONITOR'S ACRONYM(S)	
		11. SPONSOR/MONITOR'S REPORT NUMBER(S)	
12. DISTRIBUTION/AVAILABILITY STATEMENT Approved for public release, distribution unlimited			
13. SUPPLEMENTARY NOTES See also ADM002111. Department of Defense Conservation Conference. Held in Savannah, Georgia on August 22-27, 2004, The original document contains color images.			
14. ABSTRACT			
15. SUBJECT TERMS			
16. SECURITY CLASSIFICATION OF:			17. LIMITATION OF ABSTRACT
a. REPORT unclassified	b. ABSTRACT unclassified	c. THIS PAGE unclassified	UU
			18. NUMBER OF PAGES 21
			19a. NAME OF RESPONSIBLE PERSON



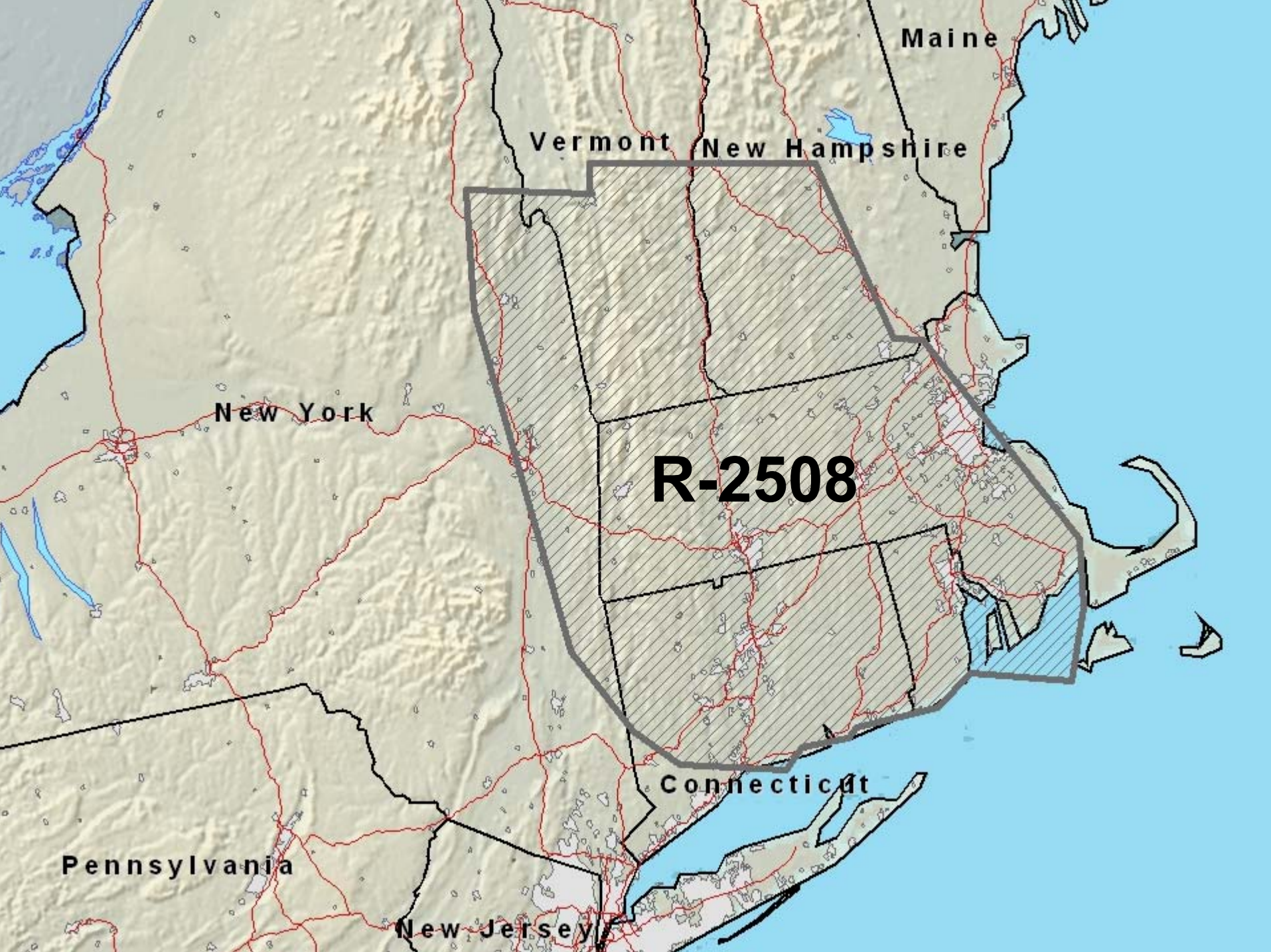
Outline

- R-2508 Overview
- Regional Approach
- Wind Generation Energy Facilities
- Joint Land Use Study

R-2508 Restricted Airspace

- 20,000 sq miles
- Six counties
- Critical for T&E and training





Maine

Vermont New Hampshire

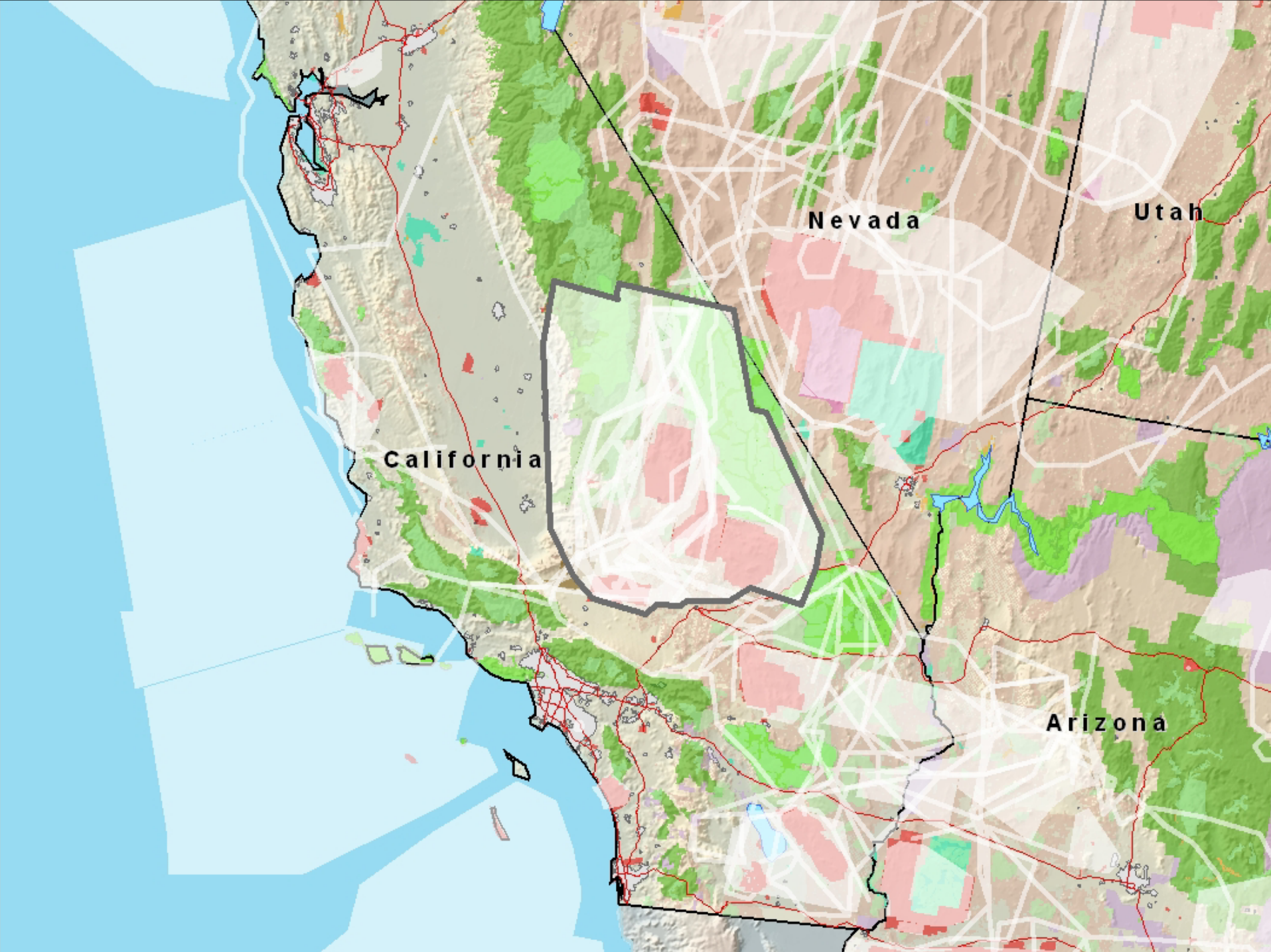
New York

R-2508

Connecticut

Pennsylvania

New Jersey



California

Nevada

Utah

Arizona



R-2508 Management

- Joint Management
 - NAVAIR
 - Air Force Flight Test Center, Edwards AFB
 - National Training Center, Fort Irwin
- Joint Policy & Programming Board
 - Flag level
- Consolidated Control Board
 - Working level



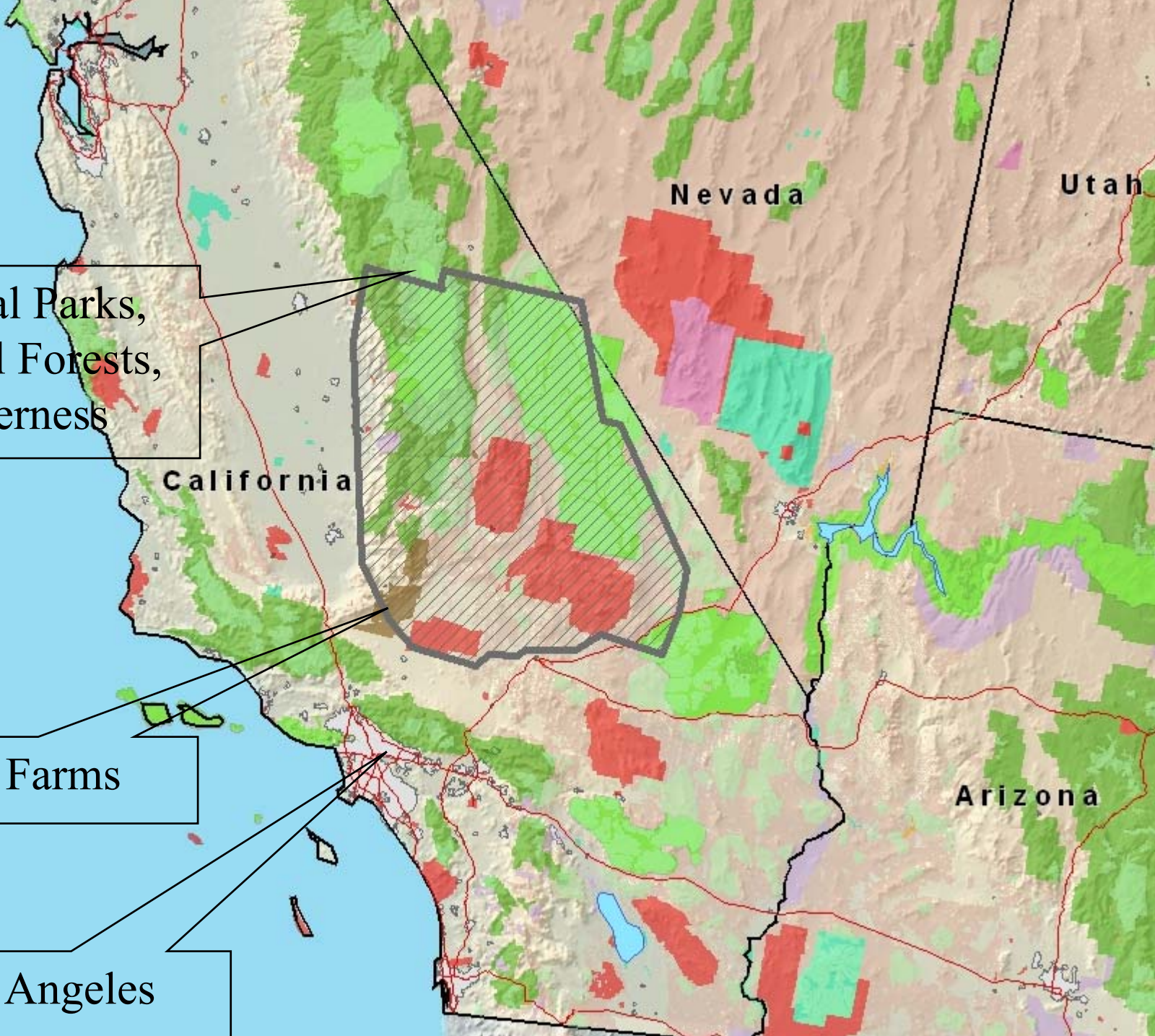
Current Encroachment Issues

- Same as the rest of DoD
 - Frequency Conflicts, Towers, Environmental Pressures, Airspace Conflicts, Noise Complaints, Population Growth & Commercial Development
- VERY Heavy Wind Energy Development
 - Wind Turbines Create two issues – Obstruction & Radar Interference
 - Approximately 10,000 structures in region
 - Latest proposals > 400'
 - Attempting to develop creative solutions to reduce friction between DoD & Wind Industry

National Parks,
National Forests,
Wilderness

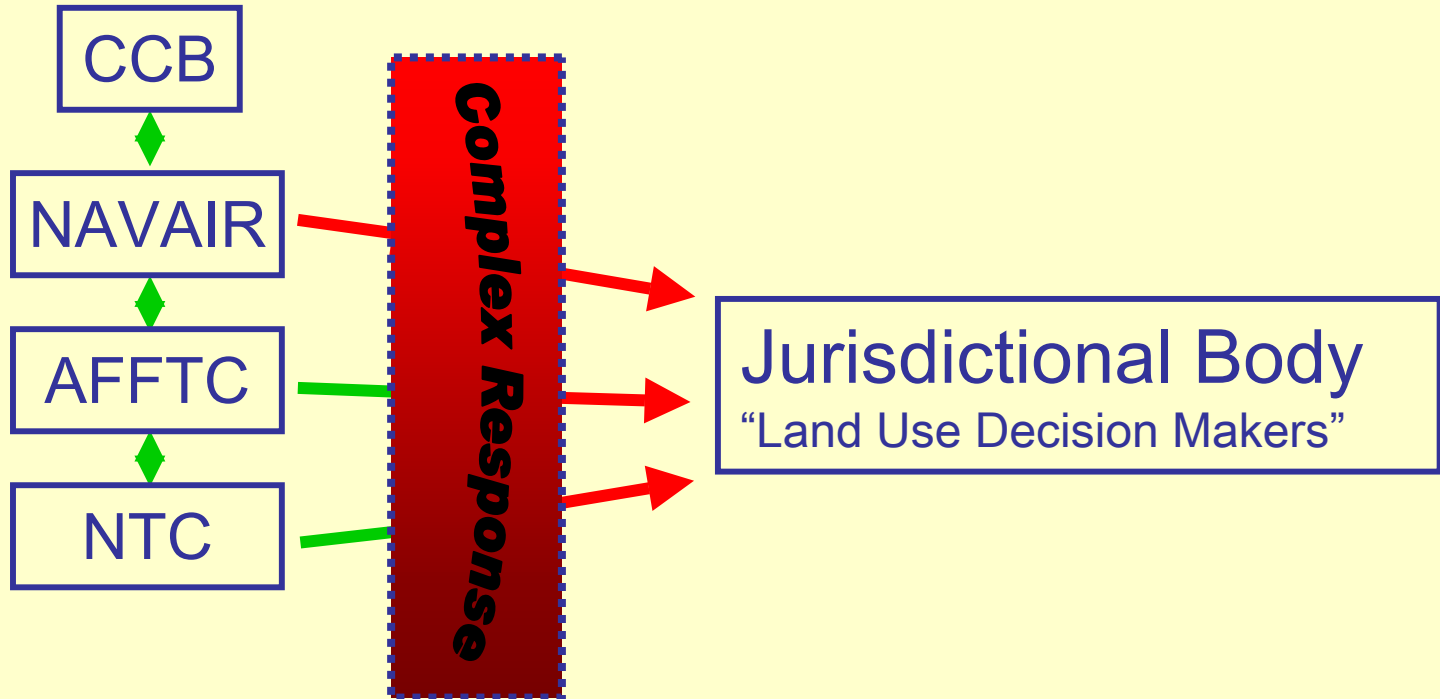
Wind Farms

Los Angeles





Regional vs. Individual Responses





WGEF's & Military Ops

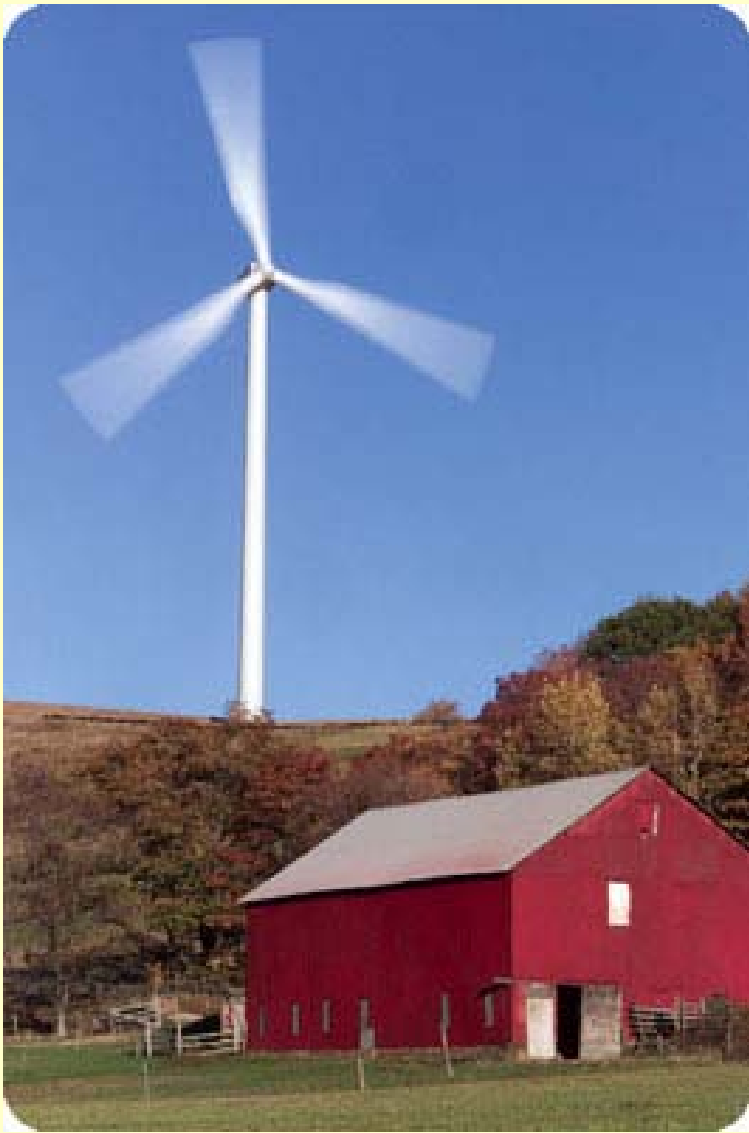
Some things just don't mix!!





Why Should We Worry?

- Wind turbines in the past
 - 80 to 200 feet AGL
- Wind turbines today...



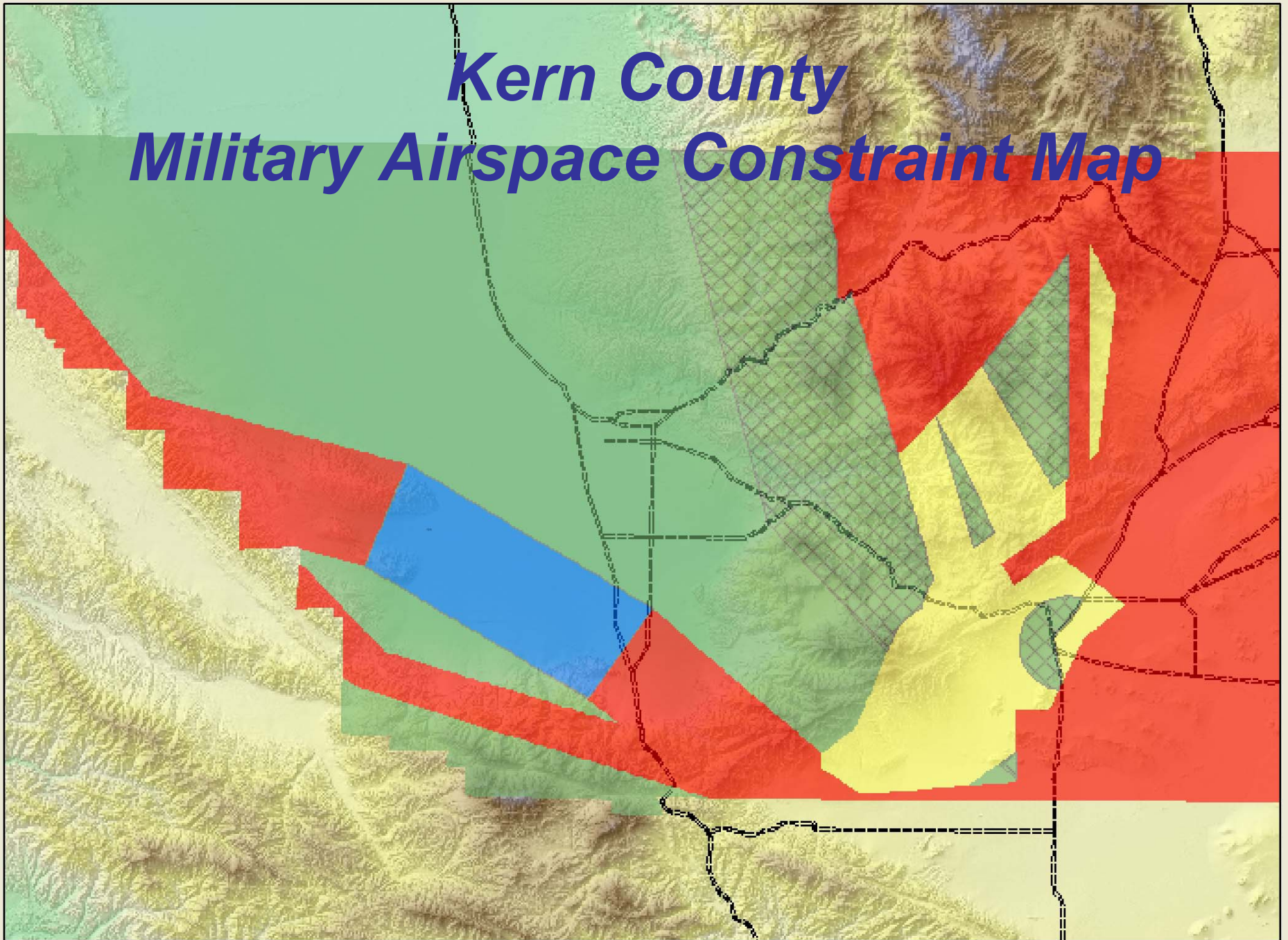
Van



Kern County

- Airport Land Use Compatibility Plan
- Urgency Ordinance
- Red/Yellow/Green strategy
 - Foundation - Existing & proposed development plus op areas
 - Identifies areas where the Wind Industry can develop without coordination
 - Protects critical mission areas
 - County developing zoning Ordinances
 - Process could be used as a model

Kern County Military Airspace Constraint Map





What is in it for Us?

- Protects our CRITICAL Operating Areas
- Reduces Friction Within Region
- Simplifies Issue
- Reduces Workload
- Provides Model for Other Counties and/or Regions



Joint Land Use Study

- Managed by Office of Economic Adjustment (OEA)
- Program addresses encroachment on military installations
- Assist communities in preparing development plans and regulations compatible with military mission
- Typically done for a single installation
- R-2508 study most comprehensive undertaking in JLUS program



Benefits

- Joint, cooperative military and community planning
- Growth conflicts can be anticipated, identified, and managed
- Develop a single DoD position with all affected communities within R-2508
- Enhanced partnership with surrounding communities
- Regional approach to habitat management



Coordination Outside DoD

- State
 - Office of Military Support
 - Office of Planning & Research
- County
 - Kern
 - San Bernardino
 - Mono
 - Inyo
 - Tulare
 - Los Angeles
- City
 - Ridgecrest
 - Palmdale
 - Lancaster
 - California City
 - Bishop
 - Barstow
 - Others...
- Other Federal
 - Bureau of Land Mgmt
 - National Park Service
 - USF&WS
 - NFS



Anticipated Results

- JLUS will help local and federal agencies to understand and incorporate the R-2508 mission requirements into their planning efforts
- JLUS recommendations guide communities in the application of development controls that
 - Manage encroachment
 - Safeguard the military mission
 - Protect public health, safety, & welfare and regional approach to environmental stewardship



Status

- OEA grant approved
- CA Office of Military Support preparing RFP



Questions