

Florida Natural Areas Inventory

*Tracking Florida's
Biodiversity*



Report Documentation Page

Form Approved
OMB No. 0704-0188

Public reporting burden for the collection of information is estimated to average 1 hour per response, including the time for reviewing instructions, searching existing data sources, gathering and maintaining the data needed, and completing and reviewing the collection of information. Send comments regarding this burden estimate or any other aspect of this collection of information, including suggestions for reducing this burden, to Washington Headquarters Services, Directorate for Information Operations and Reports, 1215 Jefferson Davis Highway, Suite 1204, Arlington VA 22202-4302. Respondents should be aware that notwithstanding any other provision of law, no person shall be subject to a penalty for failing to comply with a collection of information if it does not display a currently valid OMB control number.

1. REPORT DATE 01 AUG 2004	2. REPORT TYPE N/A	3. DATES COVERED -	
4. TITLE AND SUBTITLE The Florida Natural Areas Inventory		5a. CONTRACT NUMBER	
		5b. GRANT NUMBER	
		5c. PROGRAM ELEMENT NUMBER	
6. AUTHOR(S)		5d. PROJECT NUMBER	
		5e. TASK NUMBER	
		5f. WORK UNIT NUMBER	
7. PERFORMING ORGANIZATION NAME(S) AND ADDRESS(ES) Florida Natural Areas Inventory		8. PERFORMING ORGANIZATION REPORT NUMBER	
9. SPONSORING/MONITORING AGENCY NAME(S) AND ADDRESS(ES)		10. SPONSOR/MONITOR'S ACRONYM(S)	
		11. SPONSOR/MONITOR'S REPORT NUMBER(S)	
12. DISTRIBUTION/AVAILABILITY STATEMENT Approved for public release, distribution unlimited			
13. SUPPLEMENTARY NOTES See also ADM002111. Department of Defense Conservation Conference. Held in Savannah, Georgia on August 22-27, 2004, The original document contains color images.			
14. ABSTRACT			
15. SUBJECT TERMS			
16. SECURITY CLASSIFICATION OF:			17. LIMITATION OF ABSTRACT
a. REPORT unclassified	b. ABSTRACT unclassified	c. THIS PAGE unclassified	UU
			18. NUMBER OF PAGES 39
			19a. NAME OF RESPONSIBLE PERSON



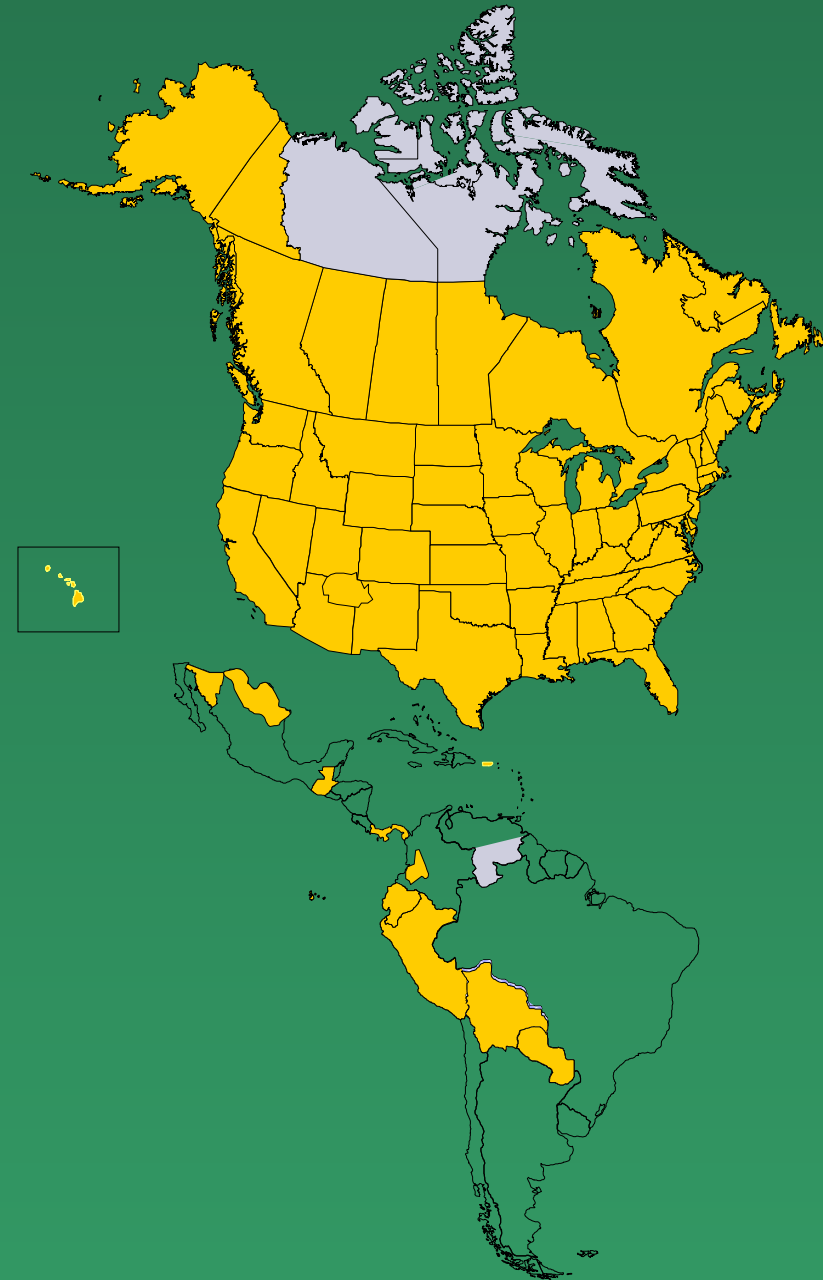
Mission

Collect, interpret, and disseminate ecological information critical to the conservation of Florida's biological diversity.



NatureServe

- NatureServe's Member Programs operate across the Americas to distribute authoritative information critical to conservation
- Member Programs use standard methods for collecting and managing biodiversity data
- Over 800 scientists and technology specialists working locally

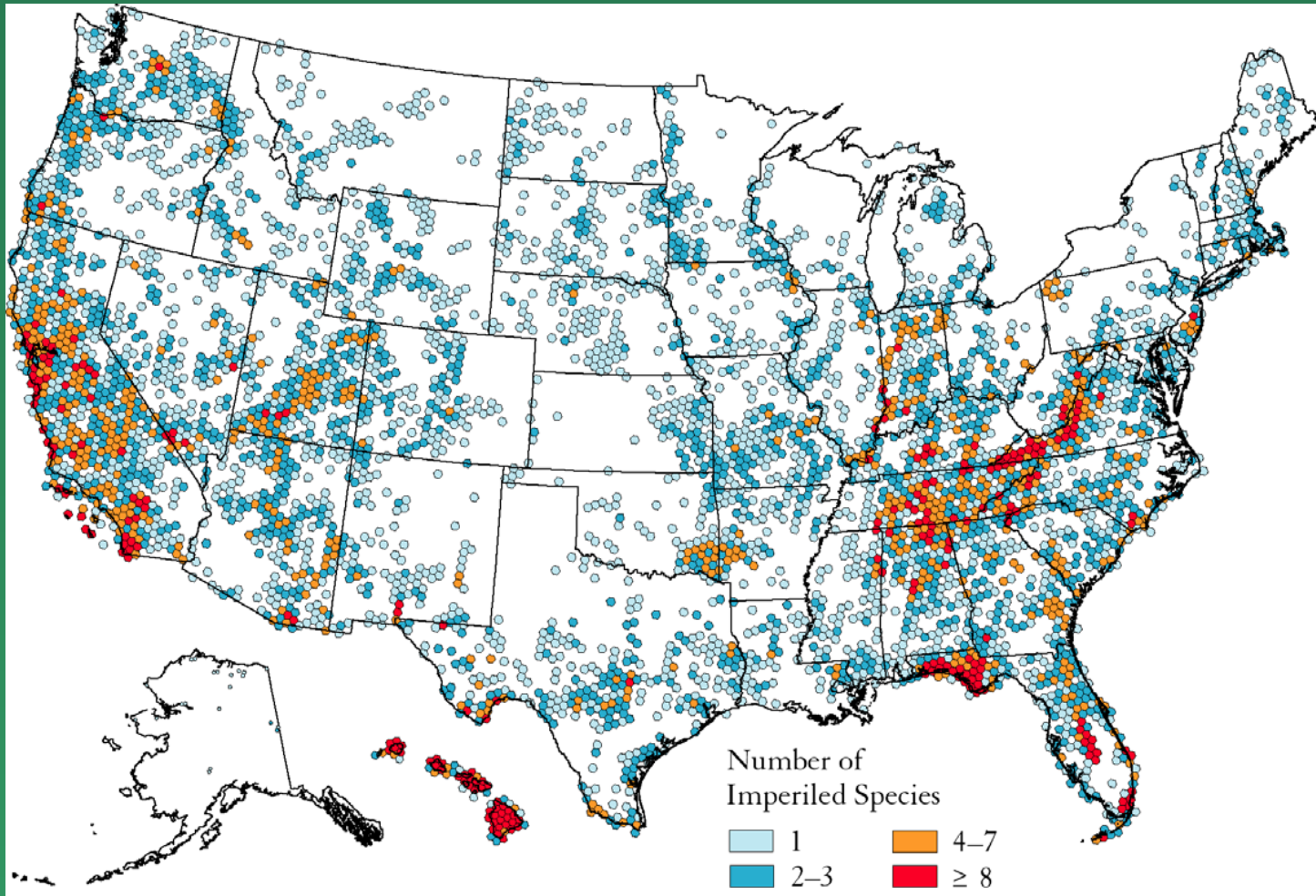




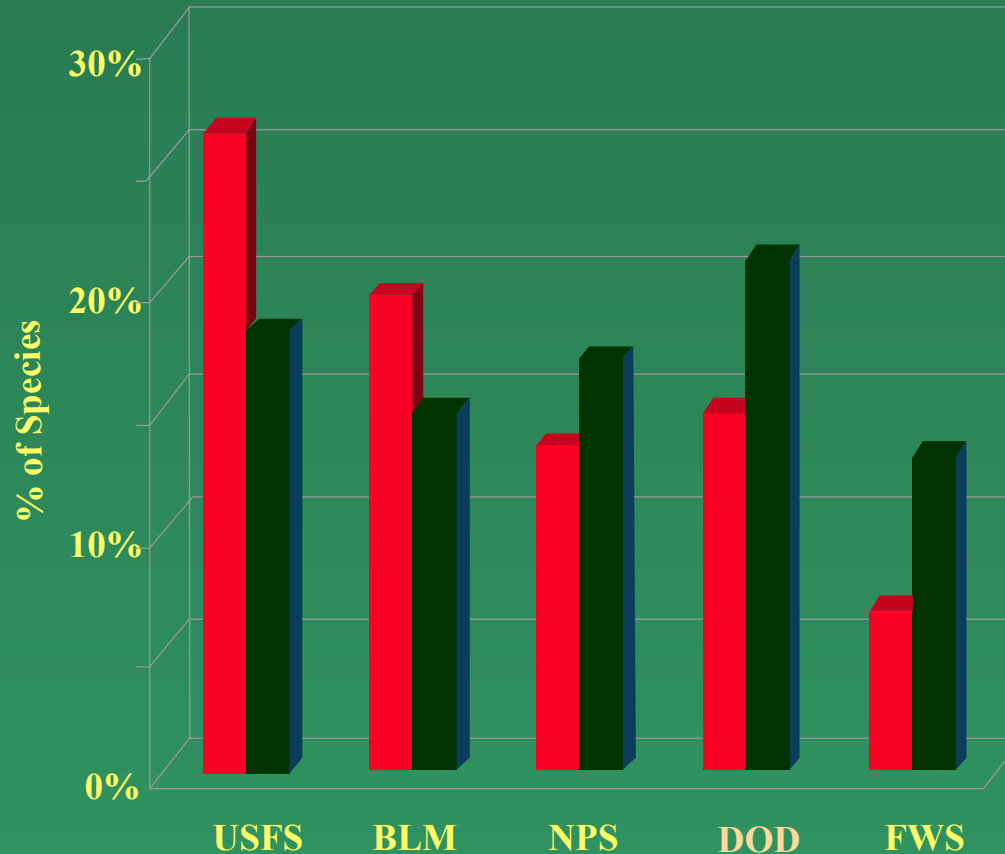
“The mission of the Department of Defense is more than just aircraft, guns, and missiles. Part of the defense job is protecting the lands, waters, timber, and wildlife—the priceless natural resources that make this great nation of ours worth defending.”

General Thomas D. White
Air Force Chief of Staff
1957-1961

Taking a National Perspective



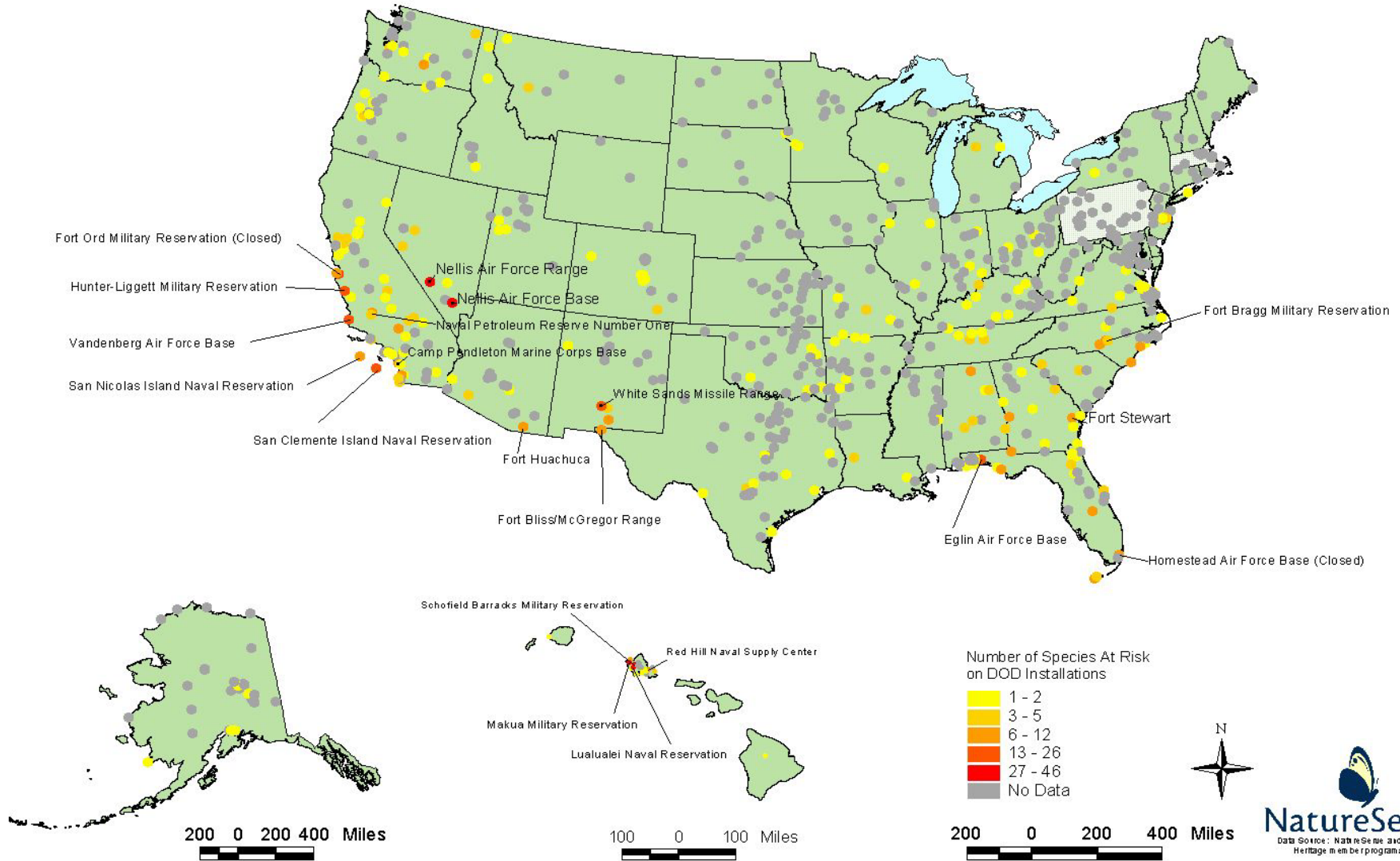
A National Perspective: Analysis of Endangered Species on Federal Lands



 Imperiled Species  Federally Listed Species

Number of Species at Risk on DOD Installations

(20 installations with highest number of Species at Risk are labeled)



Types of Data Tracked by FNAI

- Rare species occurrences
- Wildlife aggregation sites
- Rare or high quality natural community occurrences
- Conservation lands
- Environmental land acquisition projects
- Potential Natural Areas

Rare Species Occurrences

FNAI tracks:

- 471 rare plants
- 223 vertebrates
- 258 invertebrates

FNAI has more than 22,000 specific location records for rare species









Rare Species Records

- Scientific and common names
- Global and state rarity ranks
- Federal and state legal status
- Location information
- Description of the site
- Specific information about the plant or animal
- Date of observation
- Surveyor



Cape Canaveral Air Station

Wildlife Aggregation Sites

- bird rookeries
- manatee aggregation sites
- migratory bird concentration sites



Natural Communities

- FNAI has its own natural community classification
- 82 different natural community types described and ranked according to rarity and endangerment
- about 5000 occurrences documented in FNAI data base



Rare Species and Natural Community Records

- Every record in the Inventory data base has a reliable, documented source; no records are based on anecdotal information
- Biologists collect, interpret, and process the data

Conservation Lands

- Federal holdings, such as National Parks, National Forests, and National Wildlife Refuges
- State holdings, such as State Parks, State Forests, and Wildlife Management Areas
- Local government holdings
- Holdings of private conservation organizations
- More than 1400 conservation holdings in data base



Eglin AFB

Types of Ecological Studies

- Rare species inventories
- Natural community mapping/ecological characterization
- Historic vegetation analysis
- Fuel load surveys
- Exotic species surveys
- Demography and population dynamics
- Wetlands mapping
- Conservation planning/prioritization







Mitigation Planning

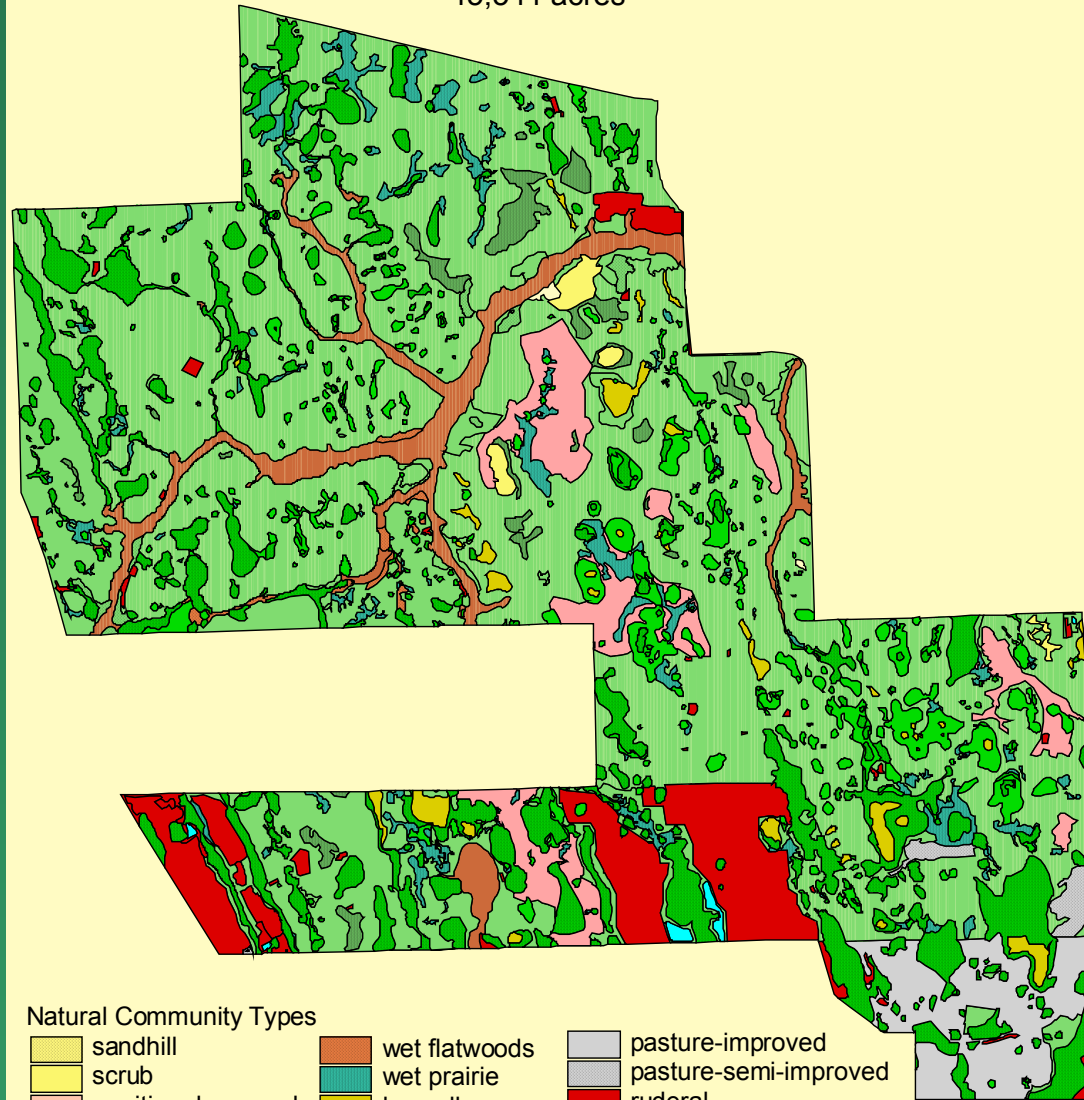
- Identification of the “restorability” of different types of wetland systems.
- Development of biological and ecological criteria for measuring the quality and condition of mitigation sites.
- Guideposts for assessing changes in quality and condition over time.

Triple N Ranch WMA Osceola County

15,541 acres

989 natural
community
polygons

Minimum
mapping unit 0.1
acre



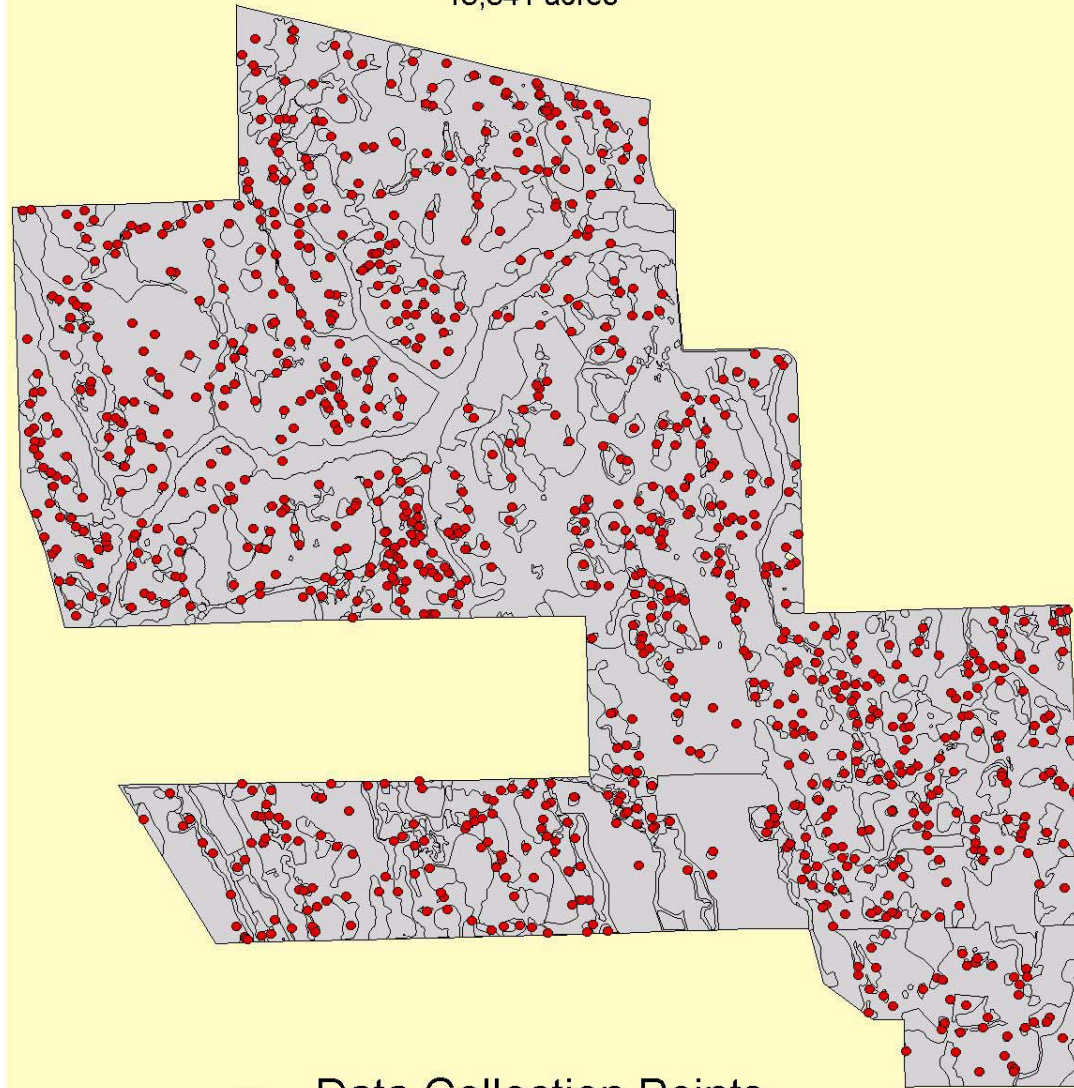
Natural Community Types

sandhill	wet flatwoods	pasture-improved
scrub	wet prairie	pasture-semi-improved
maritime hammock	baygall	ruderal
mesic flatwoods	bottomland forest	
mesic hammock	floodplain forest	
scrubby flatwoods	depression marsh	
hydric hammock	dome swamp	
dry prairie	open water	

985 Data Collection Points

Triple N Ranch WMA Osceola County

15,541 acres

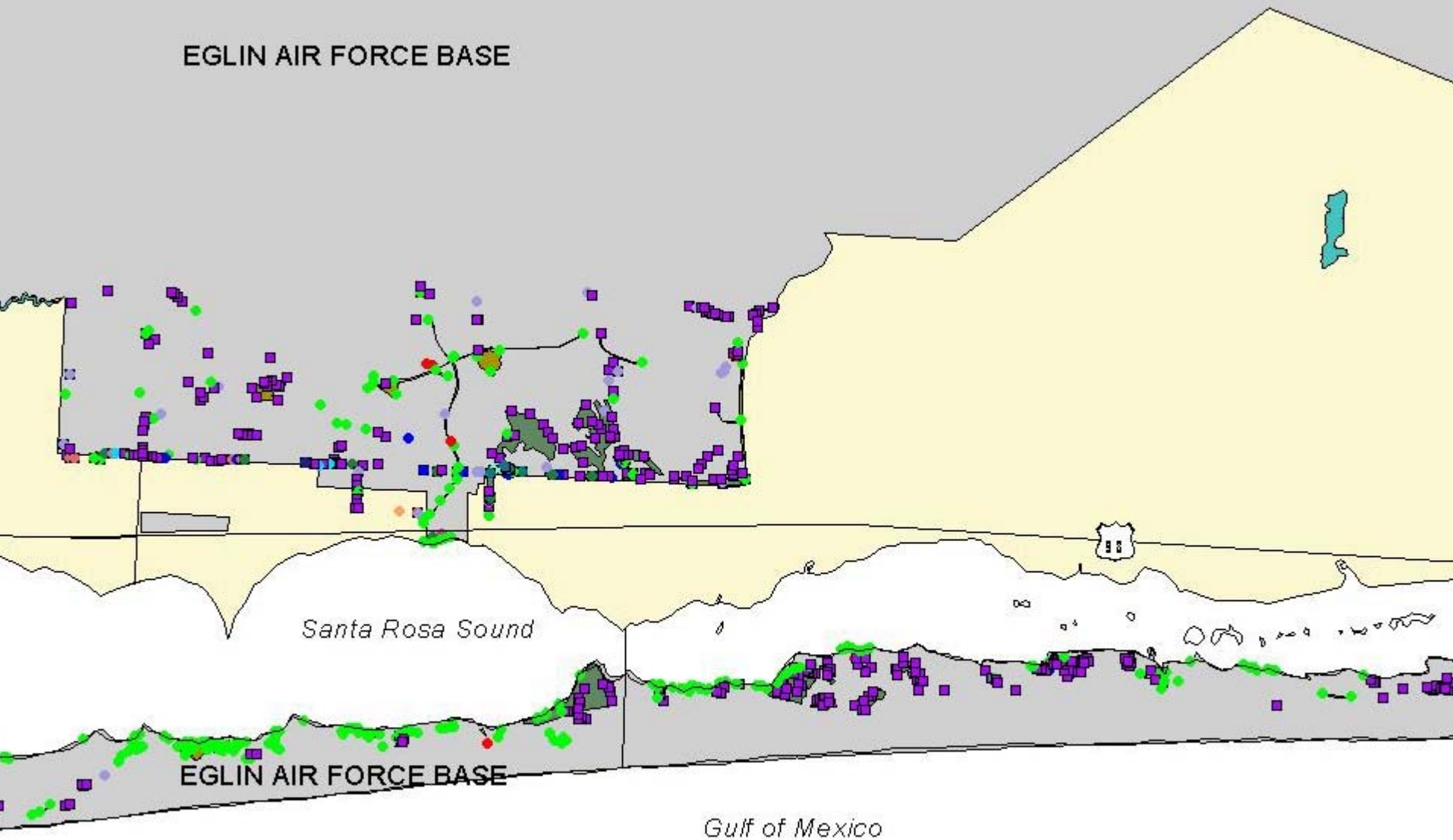


● Data Collection Points

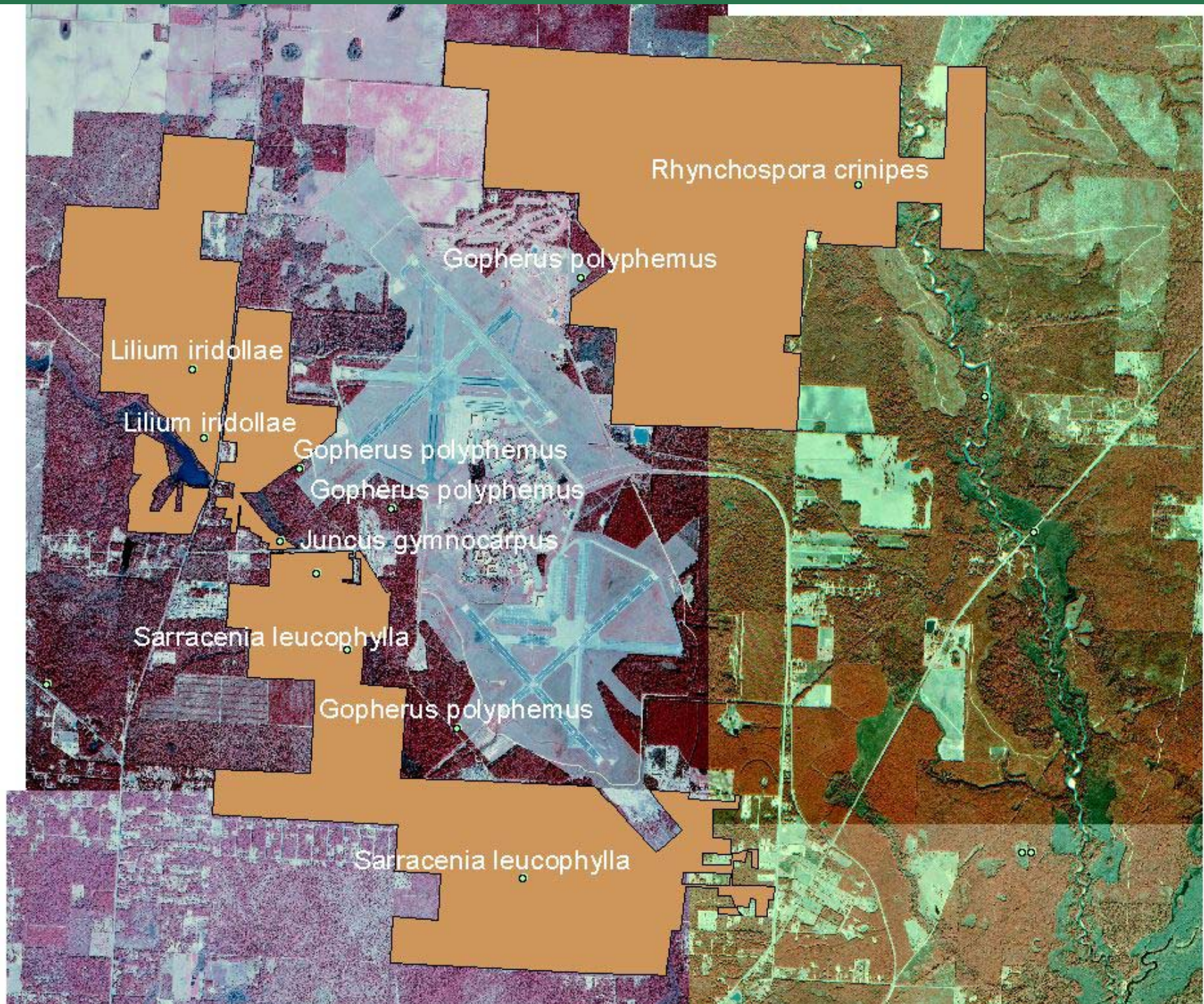
Date	20030522
Field_id	560
Point_id	183
Data_type	datalogger
Frst_nc	wet flatwoods
Rud_type	ZZ
Includednc	ZZ
Historicnc	ZZ
Canopy_cov	6-25%
Canopy_ht	>30-45 ft
Basalarea	40
Canopy_age	mature
Subcan_cov	<1%
Subcan_ht	>15-30 ft
Tshrub_cov	<1%
Tshrub_ht	6-9 ft
Sshrub_cov	76-100%
Sshrub_ht	>3-6 ft
Totalshrub	76-100%
Dwarfshrub	1-5%
Palmetto	51-75%
Herb_cover	<1%
All_gramin	<1%
Wirygramin	none
Legume_cov	<1%
Litter_cov	51-75%
Lichen_mos	none
Epiphyte	none
Vine_abund	occasional
Bare_soil	none
Organic	1-2"
Aerialfuel	none
Fine_fuel	low
Med_fuel	moderate
Heavy_fuel	low
Fuel_conti	continuous
Lastfireyr	<2 yrs
Plotdist_1	natural
Plotdist_2	ZZ
Plotdist_3	ZZ
Plot_hydro	ZZ
Plot_sever	light
Polydist_1	natural
Polydist_2	firebreaks
Polydist_3	ORV trails or roads
Poly_hydro	ZZ
Poly_sever	light
Weedycover	none
Exoticscov	none
Comments	

Data Points

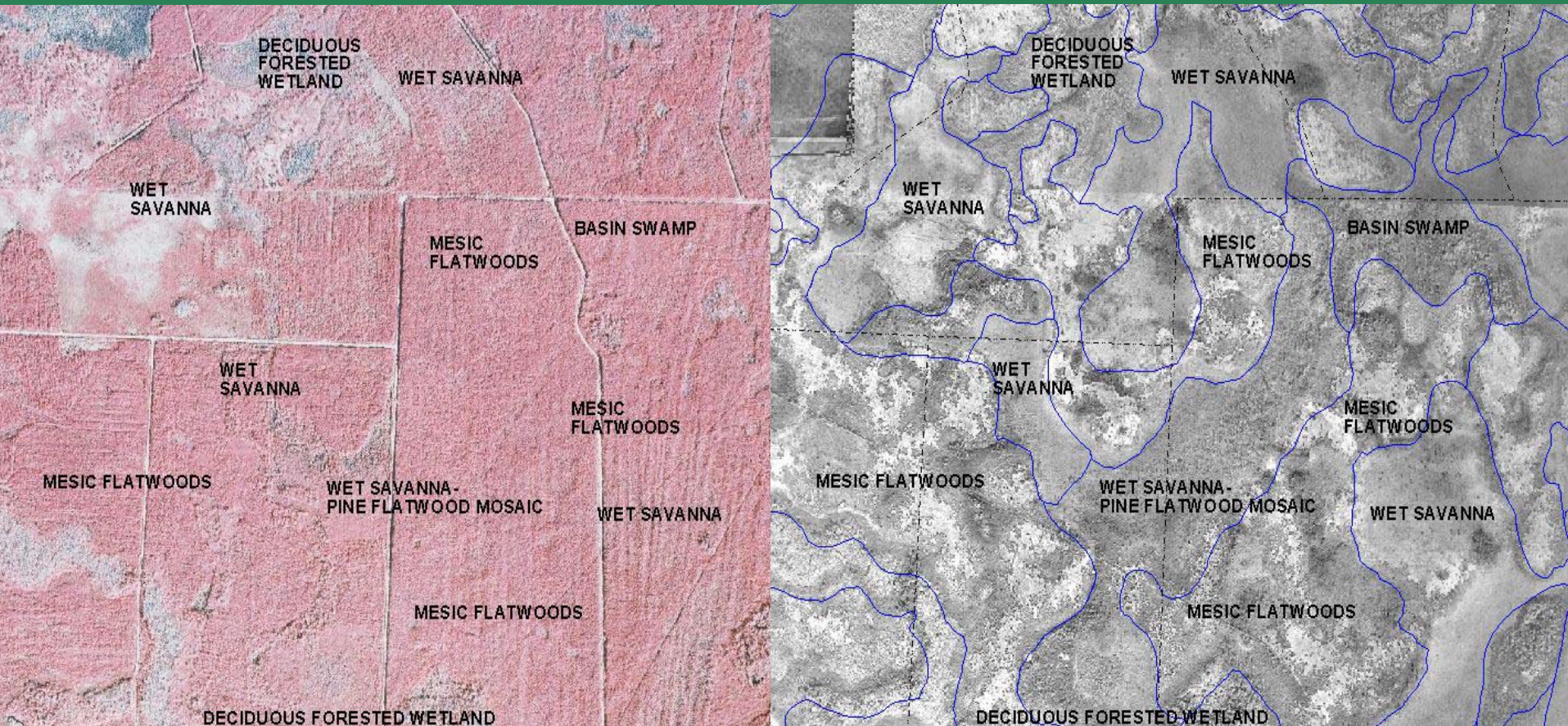
- GPS latitude and longitude
- 52 attributes
 - Composition
 - Structure
 - Fuels
 - Fire
 - Disturbance
 - Exotics



Exotic Species Mapping



Tate's Hell State Forest Historic Vegetation Project



Species	Global Rank
<i>Conradina brevifolia</i>	G2Q
<i>Haliaeetus leucocephalus</i>	G4
<i>Hypericum cumulicola</i>	G2
<i>Liatris ohlingerae</i>	G3
<i>Paronychia chartacea</i>	G3
<i>Polygonella basiramia</i>	G3
<i>Polygonella myriophylla</i>	G3
<i>Schizachyrium niveum</i>	G1
<i>Aphelocoma coerulescens</i>	G3
<i>Drymarchon corais couperi</i>	G4T3

Species	Global Rank
<i>Cicindela scabrosa</i>	G3
<i>Conradina brevifolia</i>	G2Q
<i>Haliaeetus leucocephalus</i>	G4
<i>Liatris ohlingerae</i>	G3
<i>Polygonella myriophylla</i>	G3
<i>Aphelocoma coerulescens</i>	G3
<i>Drymarchon corais couperi</i>	G4T3

Species	Global Rank
<i>Cicindela scabrosa</i>	G3
<i>Haliaeetus leucocephalus</i>	G4
<i>Liatris ohlingerae</i>	G3
<i>Polygonella myriophylla</i>	G3
<i>Drymarchon corais couperi</i>	G4T3

Eglin Air Force Base and FNAI

- Partnership for Environmental Management since 1990
- Encroachment & Buffer Planning Support
- Multitude of Services – INRMP, inventories, training, ecosystem analysis, invasive species monitoring



Eglin Air Force Base and FNAI

- Inventory and classification: Longleaf pine forests, Twenty miles of pristine barrier islands, Best remaining global examples of steephead creeks
- Critical habitat for T&E species: red-cockaded woodpecker, bald eagle, indigo snake, gopher tortoise, the Florida black bear, 67 species of rare plants
- Proactive conservation management programs have helped avoid listing of the Santa Rosa beach mouse and several other species from federal listing

Eglin Air Force Base and FNAI

- Compatible uses accomplished: Base functionality optimized with ecosystem and species protection, reduced regulation
- 97% mission-delay-avoidance rate
- Process improvements saved \$300K annually
- Landscape Disturbance Model developed to illustrate and manage varying fire regimes on the Eglin landscape



NatureServe Vista: The Basics

- A combination of software and services that support a conservation planning process
- Software: Fully documented ArcView 9 extension with beta release July 1, 2004
- Science services can be obtained from NatureServe, Natural Heritage Programs, and environmental consultants
- The software will be extended to automate more of the conservation planning functions

Relevant Questions Vista Can Address

Is this plan, project, or activity in conflict with important elements?

- Where are the elements located and what is their viability and confidence in occurrence?
- What activities are they compatible and incompatible with?
- Where else might my activity be located free of known conflicts?

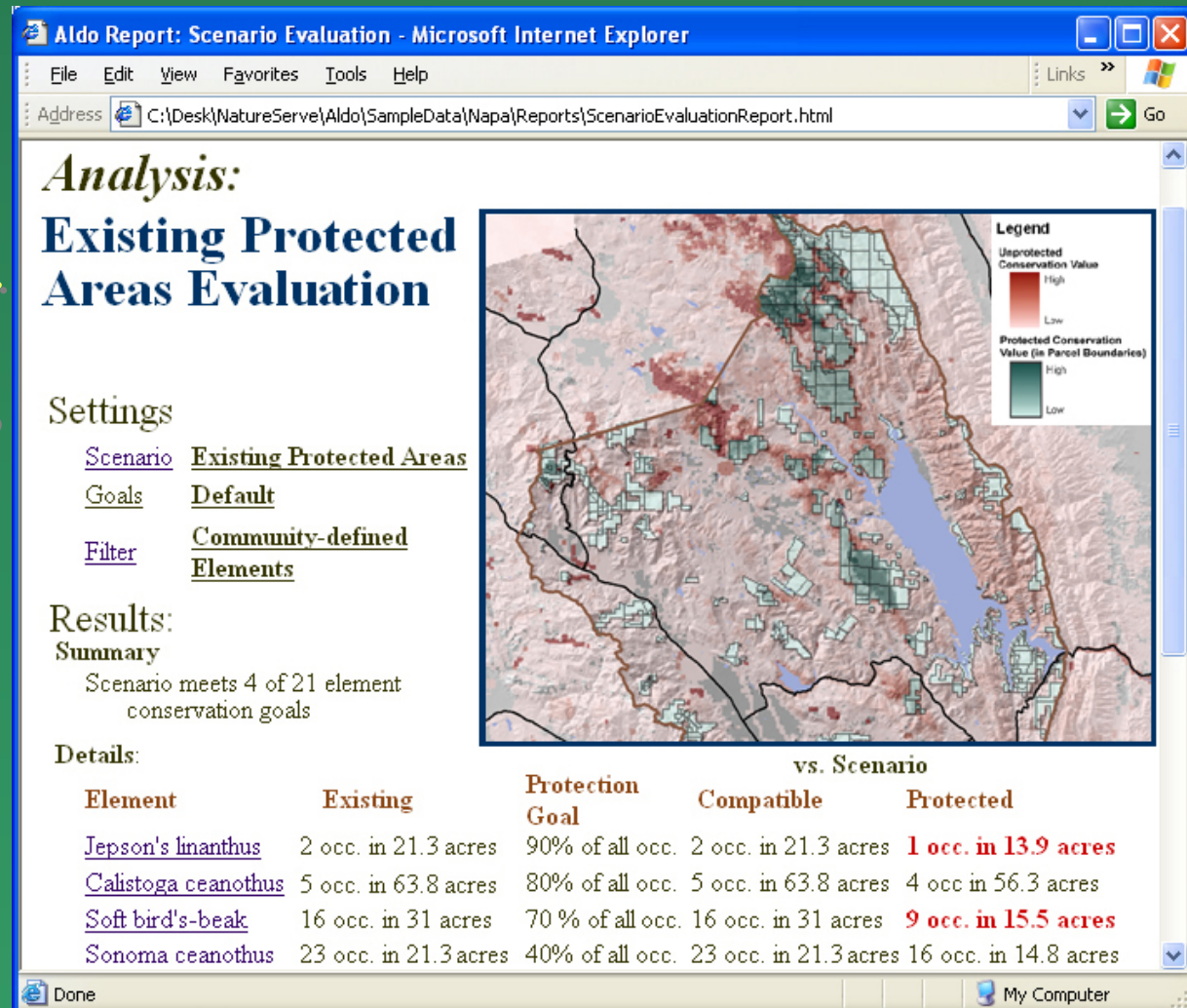
Where in the region can important elements be accommodated

- Where are the highest value areas for the elements?
- How compatible are the set of plans, regulations, & intentions for the regional players with the important elements?
- Where are the areas of highest conflict and

How Are We Doing?

Where Can We Do Better?

- Reports can compare scenarios to baseline conditions and to goals.
- How much of my goal is met by any scenario?
- Where is compatibility insufficient
- Where is protection type insufficient



Opportunities for collaboration

- Rare species inventories
- Natural community mapping
- Historic vegetation analysis
- Conservation analyses
 - Encroachment
 - National planning



Florida Natural Areas Inventory

1018 Thomasville Road, Suite 200-C

Tallahassee, Florida 32303

telephone: 850.224.8207

web: www.fnai.org

