

Headquarters U.S. Air Force

Integrity - Service - Excellence

INRMP Template Workshop



**Daniel Friese
HQ AFCEE - Technical
Directorate**

U.S. AIR FORCE

Report Documentation Page

Form Approved
OMB No. 0704-0188

Public reporting burden for the collection of information is estimated to average 1 hour per response, including the time for reviewing instructions, searching existing data sources, gathering and maintaining the data needed, and completing and reviewing the collection of information. Send comments regarding this burden estimate or any other aspect of this collection of information, including suggestions for reducing this burden, to Washington Headquarters Services, Directorate for Information Operations and Reports, 1215 Jefferson Davis Highway, Suite 1204, Arlington VA 22202-4302. Respondents should be aware that notwithstanding any other provision of law, no person shall be subject to a penalty for failing to comply with a collection of information if it does not display a currently valid OMB control number.

1. REPORT DATE 01 AUG 2004		2. REPORT TYPE N/A		3. DATES COVERED -	
4. TITLE AND SUBTITLE INRMP Template Workshop				5a. CONTRACT NUMBER	
				5b. GRANT NUMBER	
				5c. PROGRAM ELEMENT NUMBER	
6. AUTHOR(S)				5d. PROJECT NUMBER	
				5e. TASK NUMBER	
				5f. WORK UNIT NUMBER	
7. PERFORMING ORGANIZATION NAME(S) AND ADDRESS(ES) HQ AFCEE				8. PERFORMING ORGANIZATION REPORT NUMBER	
9. SPONSORING/MONITORING AGENCY NAME(S) AND ADDRESS(ES)				10. SPONSOR/MONITOR'S ACRONYM(S)	
				11. SPONSOR/MONITOR'S REPORT NUMBER(S)	
12. DISTRIBUTION/AVAILABILITY STATEMENT Approved for public release, distribution unlimited					
13. SUPPLEMENTARY NOTES See also ADM002111. Department of Defense Conservation Conference. Held in Savannah, Georgia on August 22-27, 2004, The original document contains color images.					
14. ABSTRACT					
15. SUBJECT TERMS					
16. SECURITY CLASSIFICATION OF:			17. LIMITATION OF ABSTRACT	18. NUMBER OF PAGES	19a. NAME OF RESPONSIBLE PERSON
a. REPORT unclassified	b. ABSTRACT unclassified	c. THIS PAGE unclassified			



U.S. AIR FORCE

AF INRMP Template History

- **April 2000 – Air Force Workshop to revise AFI 32-7064**
- **17 November 2001**
- **NMFWA 2003 & 2004 – INRMP Sessions**
- **DoD/FWS/States Sikes Act Implementation Tripartite Planning Meeting (April 2004)**



U.S. AIR FORCE

AF INRMP (Template) Workshop

- **10-14 May 2004**
- **Participants from US FWS, HQ USAF, AF MAJCOMs, Ranges, Geobase, Contractors**
- **Addressed Several Issues**
 - **INRMP Sufficiency for Critical Habitat**
 - **INRMP Implementation and Tracking**
 - **INRMP Budgeting**
 - **INRMP Template and Media**



INRMP TEMPLATE & CONTENT

U.S. AIR FORCE

Executive Summary

INRMP **

Tab 1*
Responsibilities

Tab 2
**Coordination
Partnering**

Tab 3
Wetlands

Tab 4
Floodplains

T 5
Coastal/Marine

T 6
F&W Man

T 7
T&E Sp Man

T 8
Forestry

T 9
Ag Outgrants

T 10
Outdoor Rec

T 11
Land Man

T 12
Wildland Fire

T 13
Inv Species

**** Integrates Tabs**
*** Appendix in each Tab**
*** Project list in Tabs**

T 14
BASH



U.S. AIR FORCE

Executive Summary

(2-6 pages, tailored to the Commanders and Laymen)

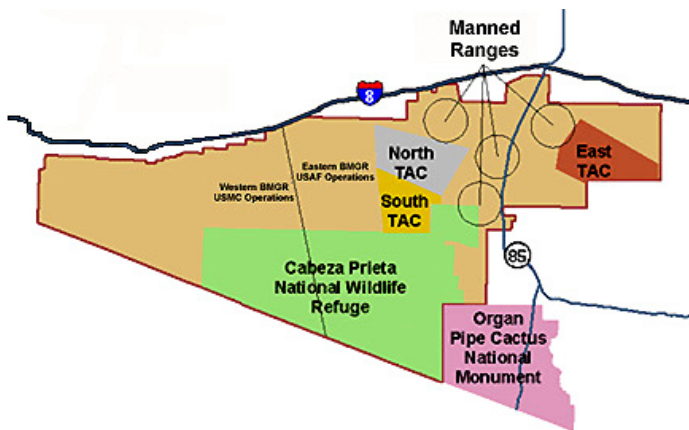
- **Emphasize Relationship Of Natural Resource Management And Mission**
 - **Natural Resource Restraints On Mission**
 - **Installation Significant Natural Resource Areas**
 - **Regulatory Drivers/Compliance**
 - **AF Conservation/Stewardship Goals**
 - **Plans Goals And Objectives**
 - **Projects And Budgeting**
- **Executive Summary Format**



Executive Summary Format ***(Coffee Table/ National Geographic Format)***

U.S. AIR FORCE

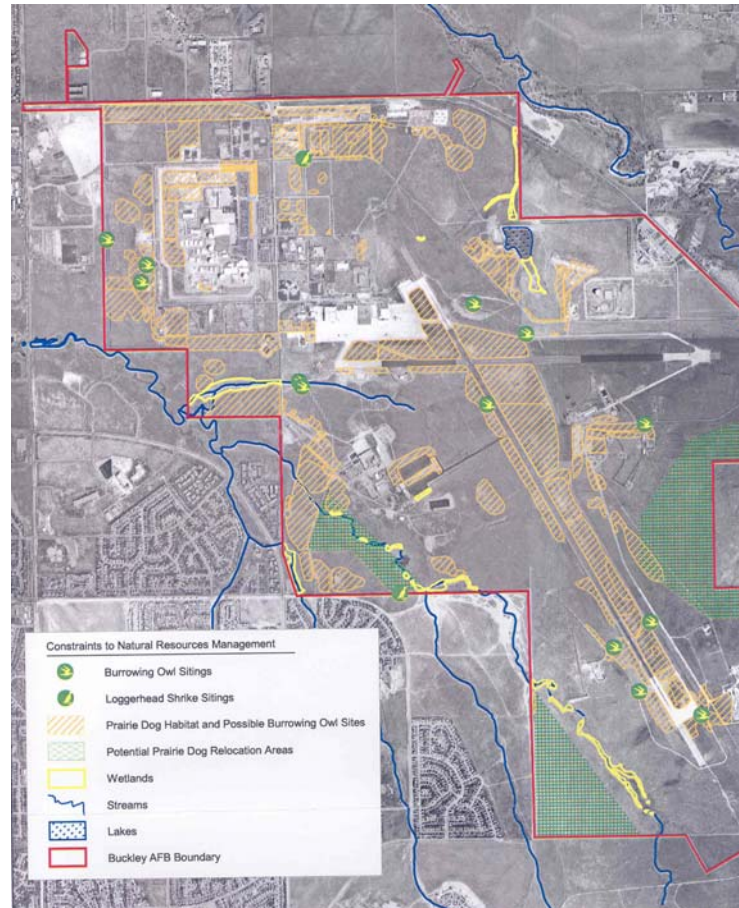
- **Simple, readable text interspersed with**
 - **Maps**
 - **Tables, Graphs, etc.**
 - **Photos**





U.S. AIR FORCE

Highly Recommended Inclusion





Executive Summary

(format similar to example below)

Range Planning Areas

Transportation

From mission and environmental concerns about Range roads to community requirements for highway access through and around the Range, transportation planning areas impact both short- and long-term Range planning.

- T-1: Urban Area Transportation. Community growth is degrading regional road levels of service. Proposed enhancements include widening construction of interchanges, and realignment. These enhancements present serious questions regarding encroachment on the Range.
- T-2: Access Points. Across the nearly 200 miles of boundary and rights-of-way Eglin shares with the public, innumerable points of access to the land range exist. Some are authorized, many are not. Test safety and security can be compromised by trespassers on Range property. Access to the Range must be controlled to ensure safety and to prevent nuisances such as illegal dumping, poaching, and other illegal uses.
- T-3: Range Roads. The Range road network was not designed to support current Range operations. The numerous access points, inconsistent capacity, generally poor condition, and lack of hierarchy create a road system that marginally meets—with excessive maintenance—the basic needs of Range users.



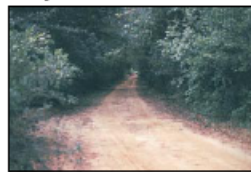
Hurricane evacuation can cause massive traffic jams as occurred in 1995 during Hurricane Opal.

- T-4: Hurricane Evacuation. Current regional evacuation routes utilize Eglin land extensively. Continued population growth in the region is forcing study of options to provide increased capacity. Involving potential additional impact to the Eglin Range and mission.
- T-5: Increase in Commercial Air Traffic. Community growth is driving increased demand for air service at Okaloosa County Air Terminal, which recently sought and received approved increases in daily and charter operations. More commercial flights constrain cross-range testing due to scheduling difficulties.

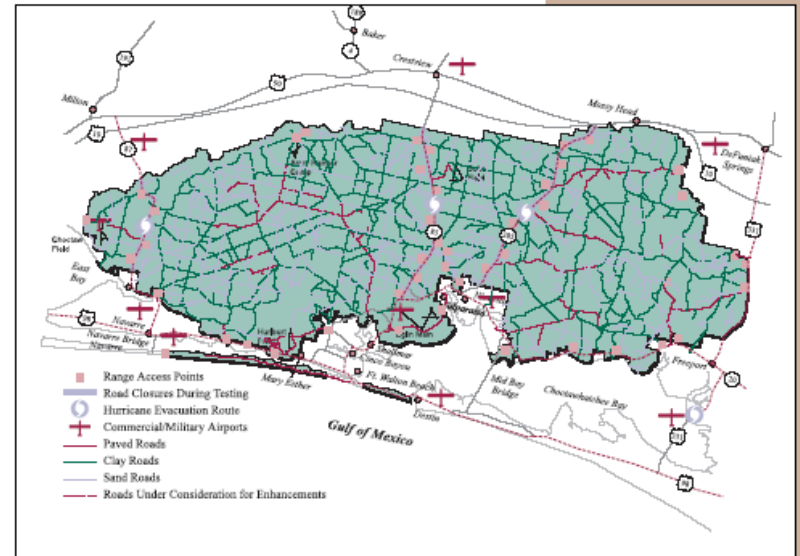
Airspace	Transportation	Gulf of Mexico
Land Use	Infrastructure	Environmental



Typical clay surface Range roads. A well-maintained, heavily traveled road (above) in contrast to an example of a marginal road.



Eglin Range General Plan



Transportation Planning Areas

Eglin Range General Plan



The INRMP presents general natural resource information for the installation. The INRMP discusses how each of the Tabs affects each other, integrates with each other and contributes to overall Natural Resource Management. The INRMP relates Natural Resource Management to mission accomplishment and mission readiness.

(Use the following outline from Attachment 2 of AFI 32-7064)

- Table of Contents**
- General Information**
- Installation Overview**



- **General Physical Environment**
- **General Biotic Environment**
- **ID, Classification, Mapping of Nat Res Management Units**
- **Mission Impacts on Nat Resources**
- **Management Goals/Objectives**
- **NR Management Impacts on Cult Res**
- **Tab Integration and Summaries**



THE TABS

(Unlimited pages, tailored to the workabees)

U.S. AIR FORCE

- **Each tab represents a complete management plan**
- **Each tab discusses specific goals and objectives**
- **Each tab contains appropriate appendices**
- **Each tab contains appropriate project list**
- **Each tab fulfills our obligation to maintain stewardship of natural resources**



WHAT NEXT?

- **Expanded version of vision sent out for MAJCOM Review and Comment**
- **Incorporate comments into detailed guidelines**
- **Guidelines published as part of AFI 32-7064**
- **Attempt to integrate template into more electronic format i.e. ESOH-MIS or GeoBase**



WHAT NEXT?

- **Attempt to integrate template into more electronic format i.e. ESOH-MIS or GeoBase**
- **Work with other services and OSD to develop DoD wide template**



U.S. AIR FORCE

QUESTIONS??????

■ **????????**