

North Carolina Onslow Bight Conservation Forum:

Regional Conservation Partnering to
Sustain the Mission and Enhance
Biodiversity

Report Documentation Page

*Form Approved
OMB No. 0704-0188*

Public reporting burden for the collection of information is estimated to average 1 hour per response, including the time for reviewing instructions, searching existing data sources, gathering and maintaining the data needed, and completing and reviewing the collection of information. Send comments regarding this burden estimate or any other aspect of this collection of information, including suggestions for reducing this burden, to Washington Headquarters Services, Directorate for Information Operations and Reports, 1215 Jefferson Davis Highway, Suite 1204, Arlington VA 22202-4302. Respondents should be aware that notwithstanding any other provision of law, no person shall be subject to a penalty for failing to comply with a collection of information if it does not display a currently valid OMB control number.

1. REPORT DATE 01 AUG 2004	2. REPORT TYPE N/A	3. DATES COVERED -	
4. TITLE AND SUBTITLE North Carolina Onslow Bight Conservation Forum: Regional Conservation Partnering to Sustain the Mission and Enhance Biodiversity		5a. CONTRACT NUMBER	
		5b. GRANT NUMBER	
		5c. PROGRAM ELEMENT NUMBER	
6. AUTHOR(S)		5d. PROJECT NUMBER	
		5e. TASK NUMBER	
		5f. WORK UNIT NUMBER	
7. PERFORMING ORGANIZATION NAME(S) AND ADDRESS(ES) North Carolina Natural Heritage Program		8. PERFORMING ORGANIZATION REPORT NUMBER	
9. SPONSORING/MONITORING AGENCY NAME(S) AND ADDRESS(ES)		10. SPONSOR/MONITOR'S ACRONYM(S)	
		11. SPONSOR/MONITOR'S REPORT NUMBER(S)	
12. DISTRIBUTION/AVAILABILITY STATEMENT Approved for public release, distribution unlimited			
13. SUPPLEMENTARY NOTES See also ADM002111. Department of Defense Conservation Conference. Held in Savannah, Georgia on August 22-27, 2004, The original document contains color images.			
14. ABSTRACT			
15. SUBJECT TERMS			
16. SECURITY CLASSIFICATION OF:			17. LIMITATION OF ABSTRACT
a. REPORT unclassified	b. ABSTRACT unclassified	c. THIS PAGE unclassified	UU
			18. NUMBER OF PAGES 23
			19a. NAME OF RESPONSIBLE PERSON

North Carolina

Natural Heritage Program

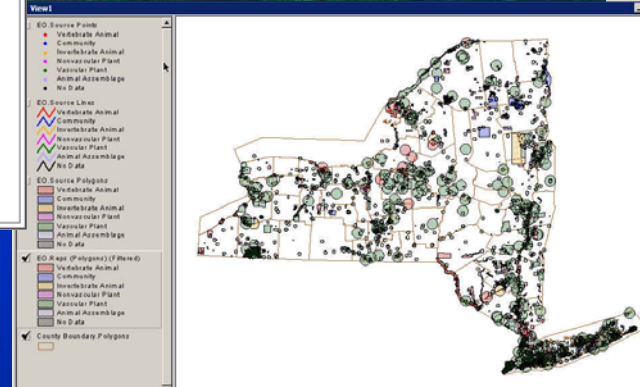
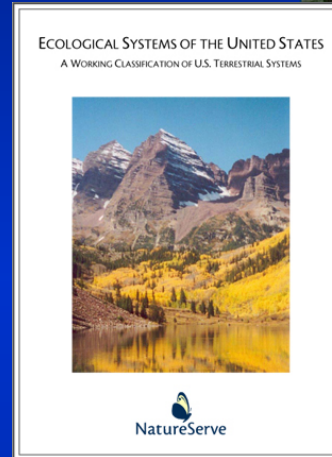
- Identify the most significant natural areas in North Carolina
- Work with landowners and conservation partners to secure natural area protection.
- Member of NatureServe



NatureServe

Network Connecting Science with Conservation

- Network of experts
- Scientific standards and methods
- Technology tools and infrastructure
- Conservation products and services



NatureServe Explorer

An Online Encyclopedia of Life

Search About Us About the Data Local Programs Help

Welcome to NatureServe Explorer, an authoritative source for information on the plants, animals, and ecological communities of the United States and Canada. This conservation resource includes more than 55,000 species and ecosystems, with particularly in-depth coverage for rare and endangered species.

Search the database for species or ecological communities

NatureServe Explorer is a product of NatureServe and its natural heritage member programs.

You can easily find information on:

- Scientific and common names
- Conservation status
- Distribution maps
- Life histories, conservation needs, and more

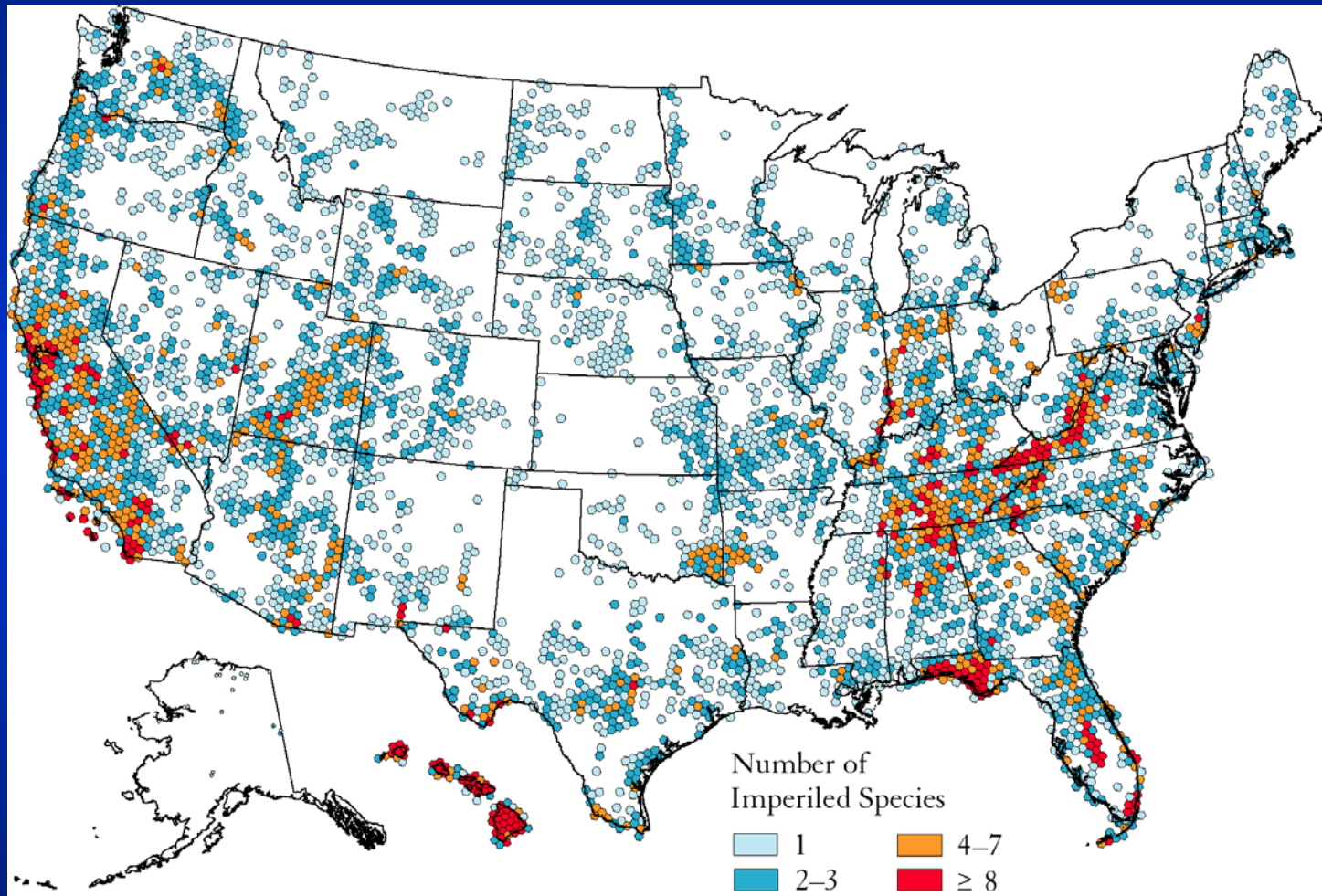
NatureServe Website | Support Us | Feedback | Offices

Site Search | Thanks To

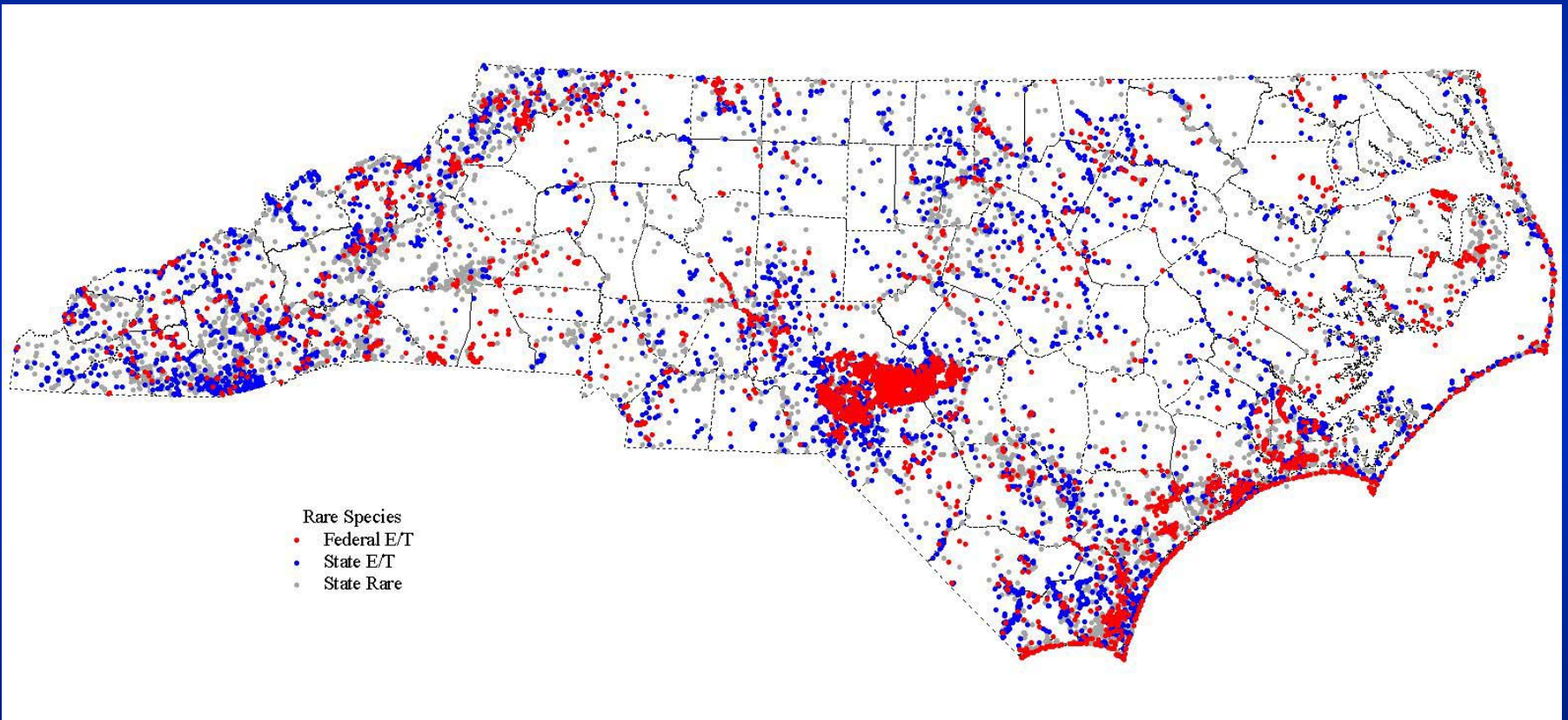
NatureServe Explorer 2.0 Requires Internet Explorer 5.0 or Netscape 4.04

Copyright © 2004 NatureServe

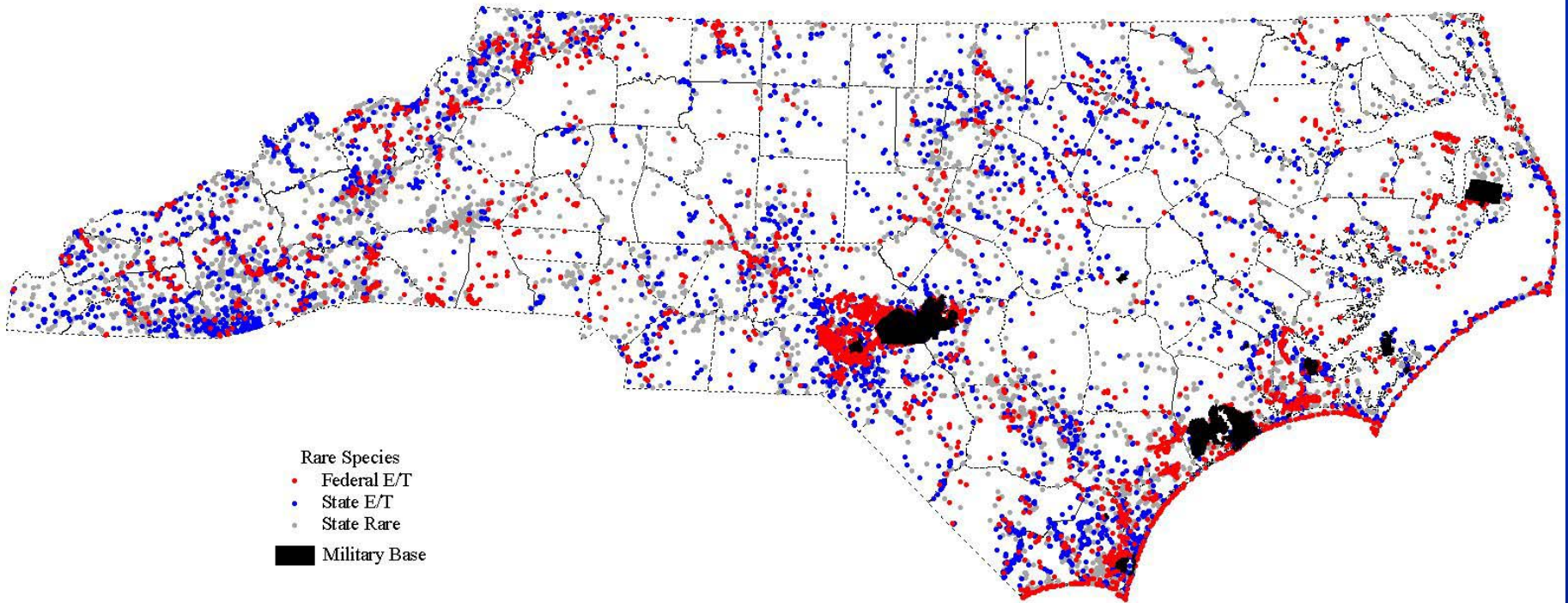
National Perspective



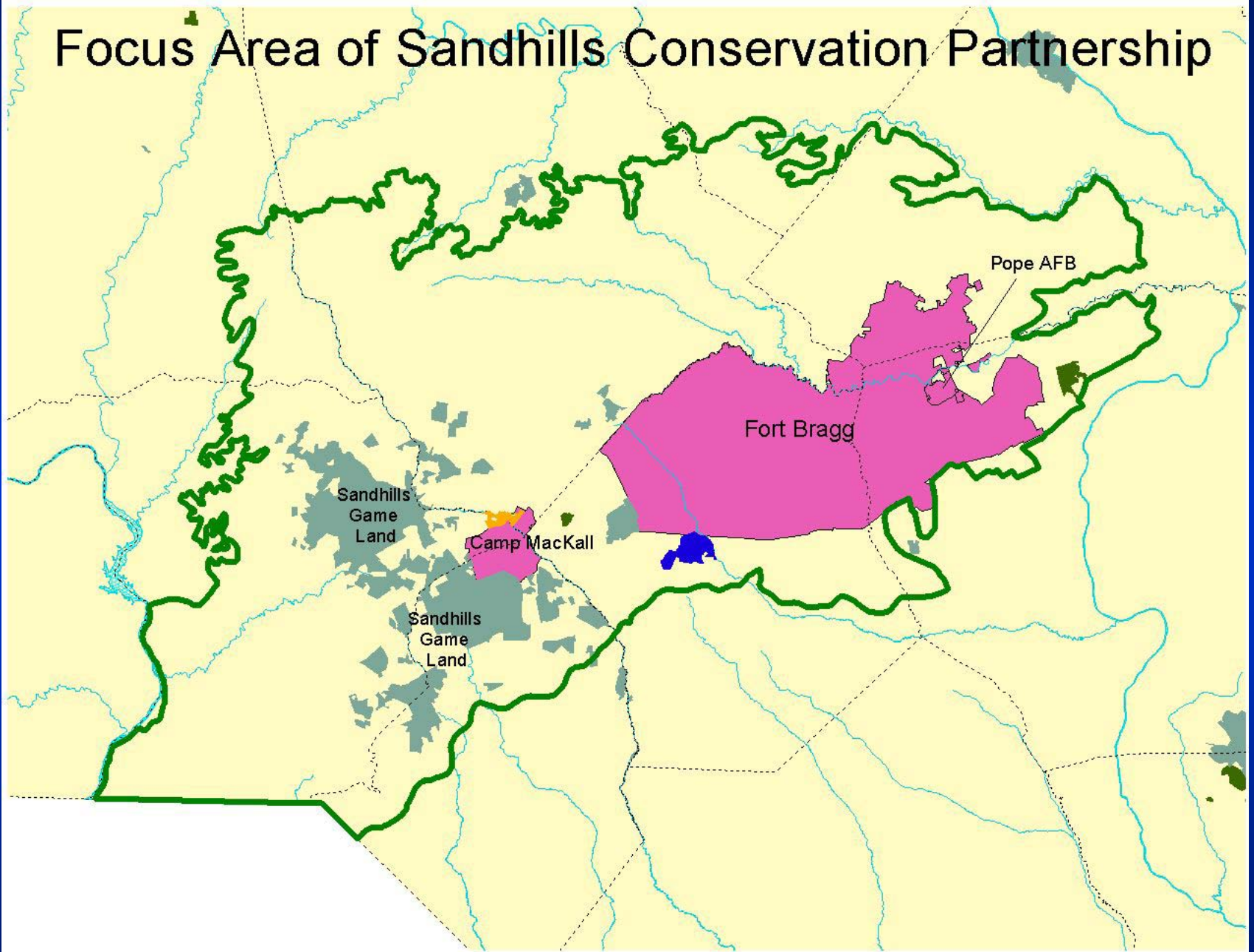
North Carolina Perspective



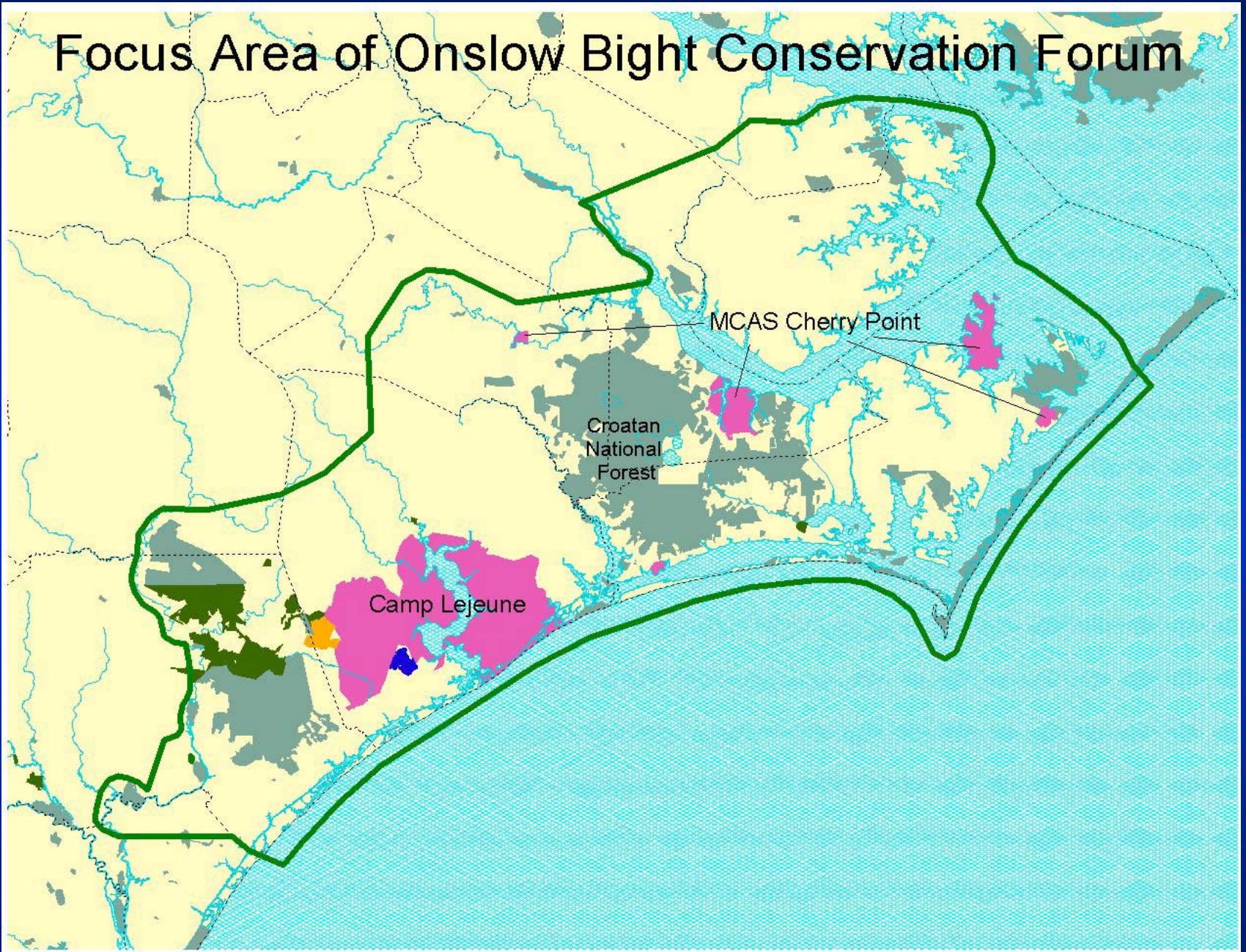
Relationship to DoD Lands



Focus Area of Sandhills Conservation Partnership



Focus Area of Onslow Bight Conservation Forum

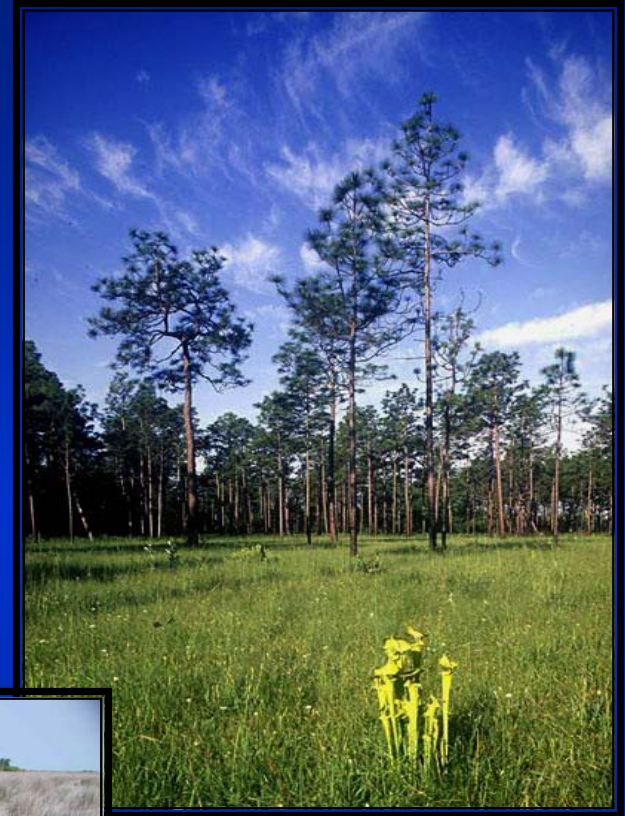


Onslow Bight Partners

- NC Dept. Env. & Natural Resources
- The Nature Conservancy
- US Fish and Wildlife Service
- US Forest Service
- North Carolina Coastal Federation
- NRCS (Nat'l Res.Cons. Service)
- MCB Camp Lejeune
- MCAS Cherry Point
- Endangered Species Coalition
- NC Wildlife Resource Commission
- NC Coastal Land Trust
- NC Dept of Transportation

Mission:

to develop and implement a strategy for the conservation and enhancement of biological diversity and ecosystem sustainability throughout the Onslow Bight Landscape compatible with the land use objectives of the partners.

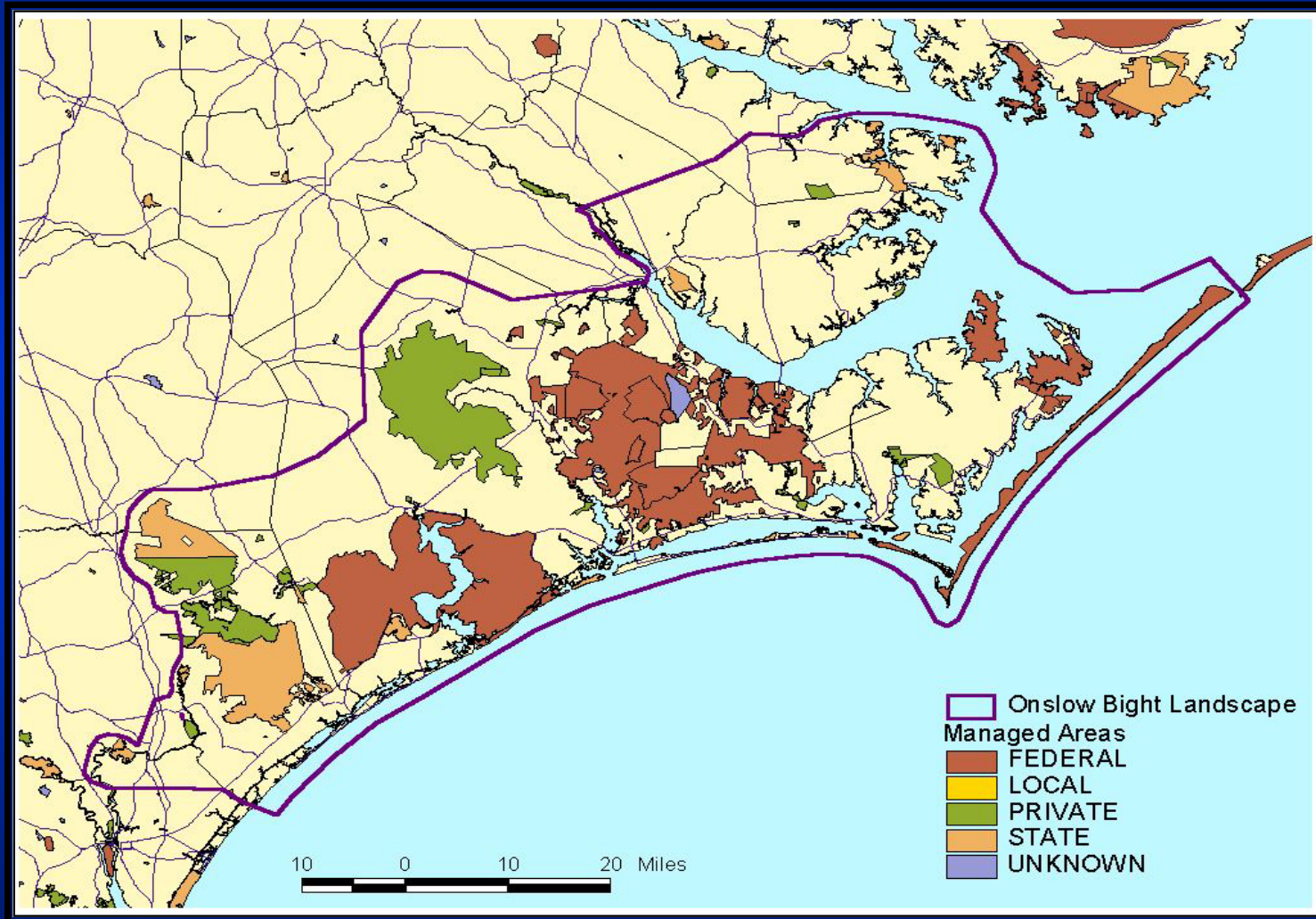


Onslow Bight Goals

- to encourage public/private partnerships among participating agencies private landowners
- to promote the conservation, restoration, health and and sustainable use of the landscape
- to enhance coordination among participants
- to encourage an on-going regional dialogue among participants about sustainable land management and native biodiversity
- to ensure the sustainability of the military mission in the Onslow Bight Landscape by preserving land uses suitable to military training



The Landscape



Conservation Targets

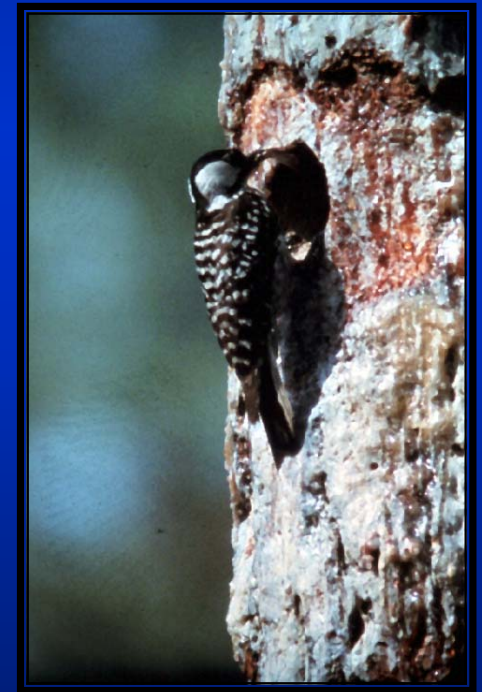
Terrestrial & Freshwater Targets

- Endangered & Threatened Species and their habitats
- Longleaf Pine and Pocosin Ecosystems
- Freshwater wetlands



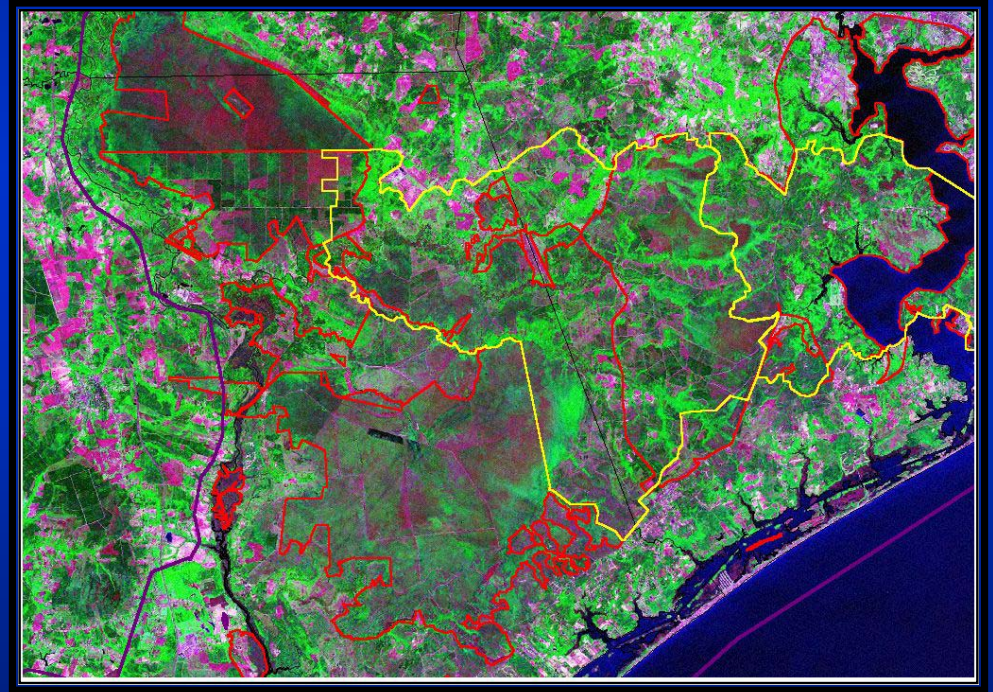
Barrier & Estuarine Islands

Marine Habitats



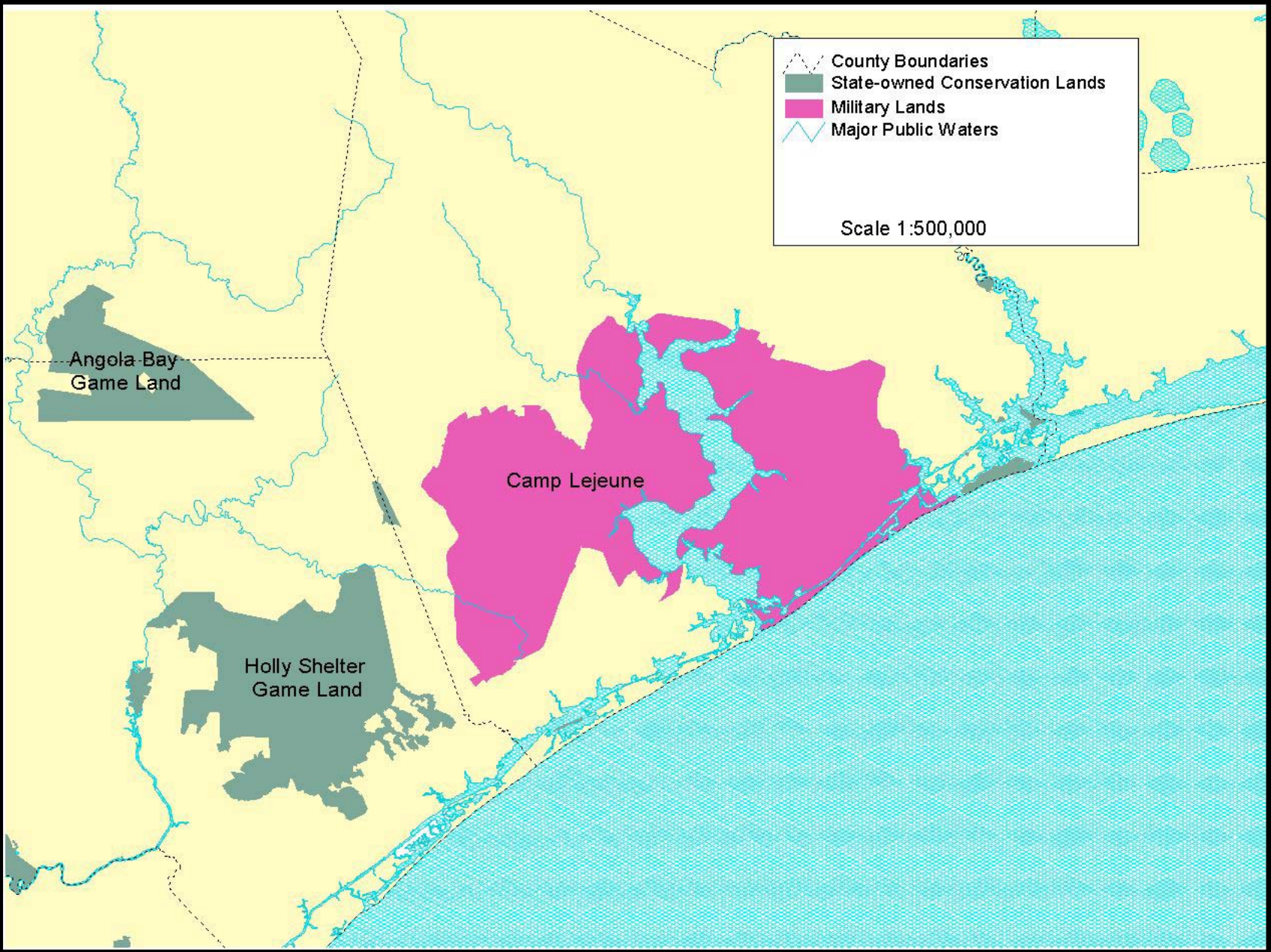
Planning Priorities

- Endangered Species Habitats
- Core Natural Areas
- Managed Lands
- Isolated Natural Areas
- Corridor Study Areas
- Buffers



County Boundaries
State-owned Conservation Lands
Military Lands
Major Public Waters

Scale 1:500,000

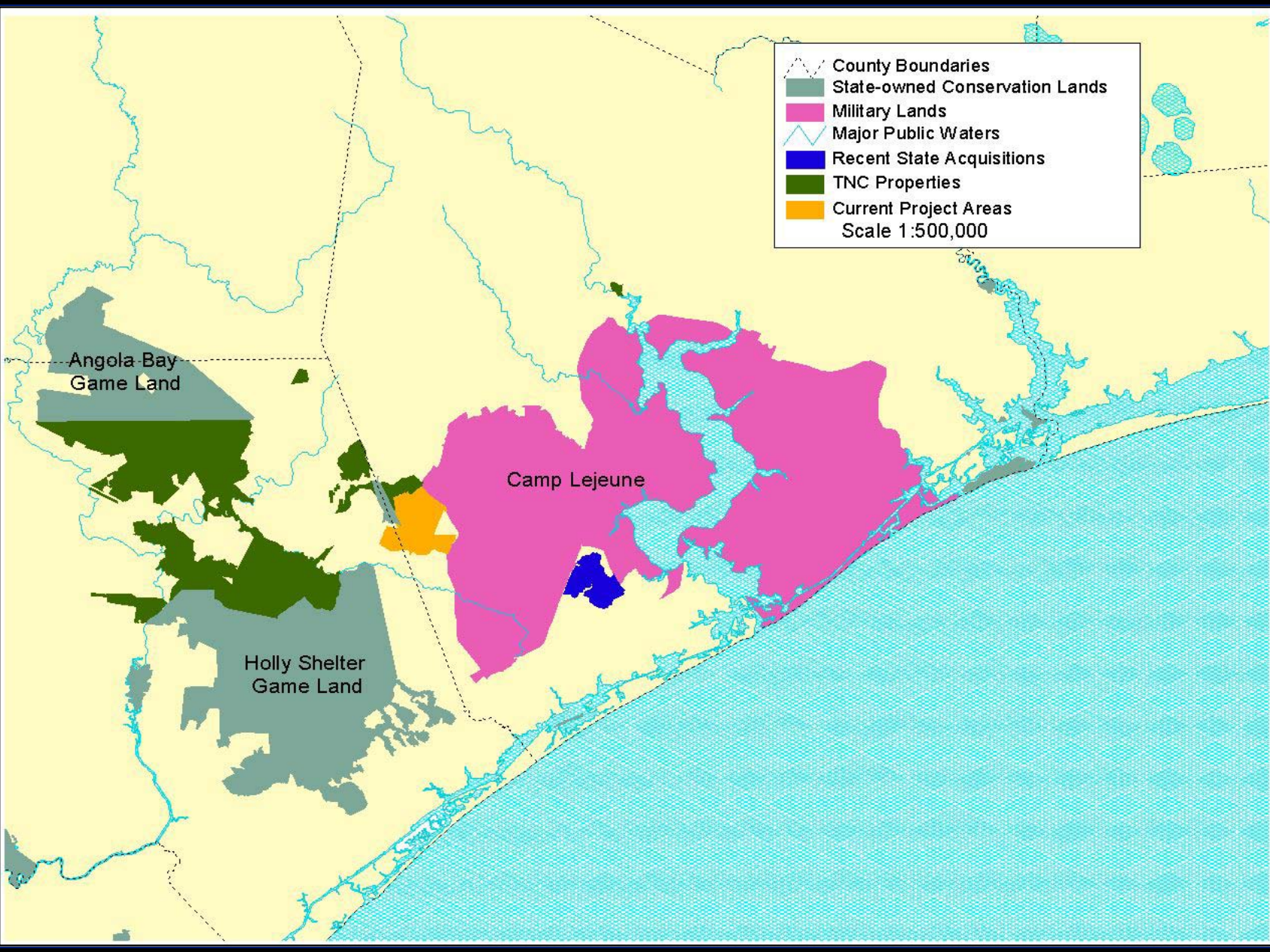


Angola Bay
Game Land

Camp Lejeune

Holly Shelter
Game Land

△ County Boundaries
■ State-owned Conservation Lands
■ Military Lands
△ Major Public Waters
■ Recent State Acquisitions
■ TNC Properties
■ Current Project Areas
Scale 1:500,000



Angola Bay
Game Land

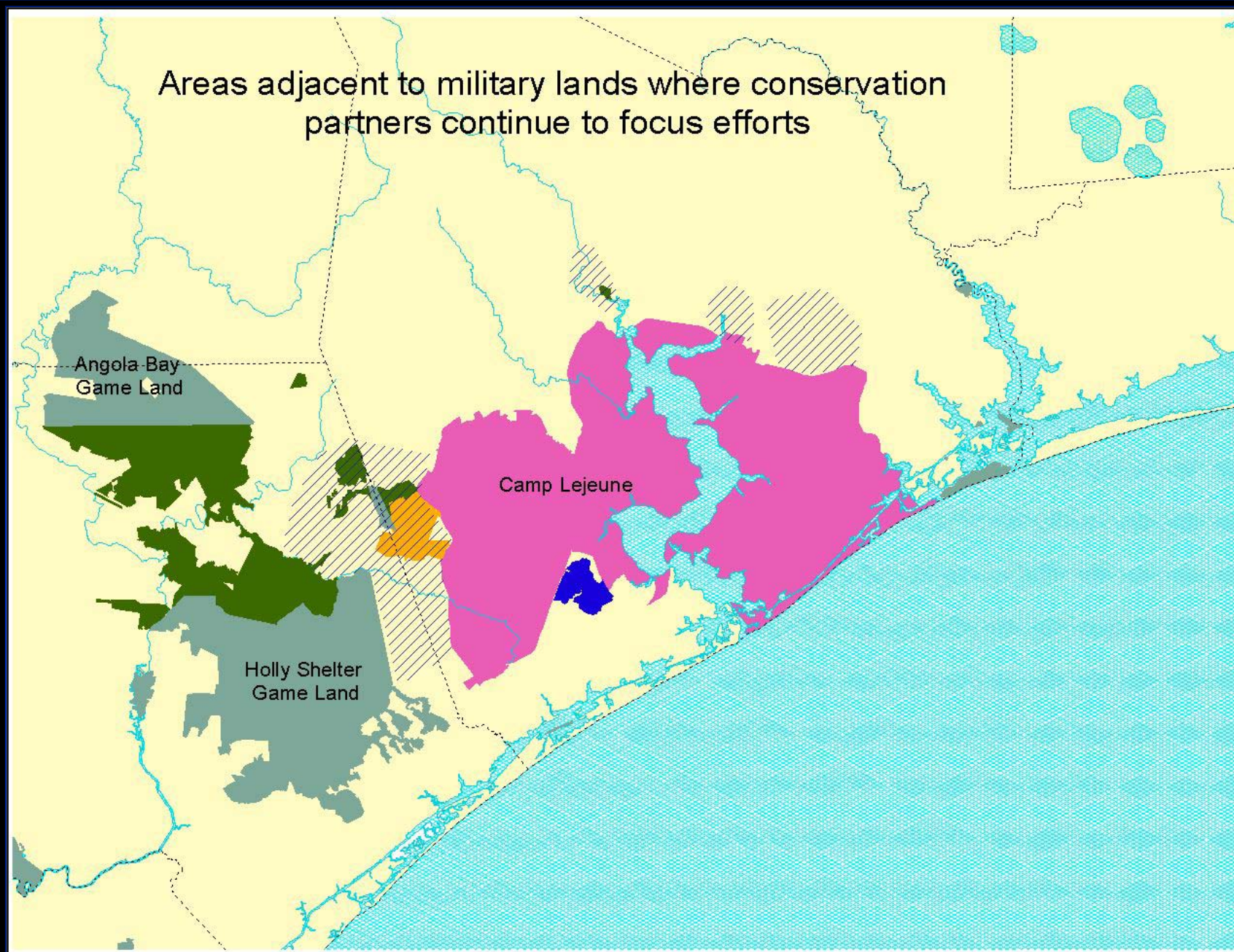
Camp Lejeune

Holly Shelter
Game Land

Broad Conservation Corridors

- Corridor study areas
- Wildlife habitats
- Reduce fragmentation
- Facilitate prescribed burning
- Identify partner interest
- Reduce encroachment

Areas adjacent to military lands where conservation partners continue to focus efforts



Specific Strategies for Protecting Conservation Targets

- Management of Core Areas and Corridors
- Working with Private Landowners
- Identification of Partnership Opportunities
- Acquisition of Priority Sites from Willing Landowners

Short-term Benefits

- Partnership on Beck tract
- Information in place to implement new state funding opportunity
- Sites identified by forum considered state priority for new mitigation program



Camp Lejeune Perspective on Conservation Partnership

- Provides expertise or access to important regional biological information.
- Facilitates access to state funding for conserving lands.
- Leverages scarce O&M dollars for conserving lands.
- Provides info exchange between installation and other land managers in the region.

Partnership Summary

- Military Installations and Natural Heritage Programs are natural conservation partners in regional landscape.
- Leverages scarce Encroachment Partnership funds.
- Builds support for conservation initiatives.