

REPORT DOCUMENTATION PAGE

Form Approved
OMB No. 0704-0188

The public reporting burden for this collection of information is estimated to average 1 hour per response, including the time for reviewing instructions, searching existing data sources, gathering and maintaining the data needed, and completing and reviewing the collection of information. Send comments regarding this burden estimate or any other aspect of this collection of information, including suggestions for reducing the burden, to Department of Defense, Washington Headquarters Services, Directorate for Information Operations and Reports (0704-0188), 1215 Jefferson Davis Highway, Suite 1204, Arlington, VA 22202-4302. Respondents should be aware that notwithstanding any other provision of law, no person shall be subject to any penalty for failing to comply with a collection of information if it does not display a currently valid OMB control number.

PLEASE DO NOT RETURN YOUR FORM TO THE ABOVE ADDRESS.

1. REPORT DATE (DD-MM-YYYY) 25-08-2009		2. REPORT TYPE Final Technical Report		3. DATES COVERED (From - To) Feb 2005 - Oct 2008	
4. TITLE AND SUBTITLE Moored Observations to Define the Structure and Energetics of Non-Linear Internal Wave Generation over the New Jersey Shelf				5a. CONTRACT NUMBER	
				5b. GRANT NUMBER N00014-05-1-0271	
				5c. PROGRAM ELEMENT NUMBER	
6. AUTHOR(S) Jonathan D. Nash				5d. PROJECT NUMBER	
				5e. TASK NUMBER	
				5f. WORK UNIT NUMBER	
7. PERFORMING ORGANIZATION NAME(S) AND ADDRESS(ES) College of Oceanic and Atmospheric Sciences, 104 COAS Admin. Bldg., Oregon State University, Corvallis OR 97331-5503				8. PERFORMING ORGANIZATION REPORT NUMBER NASH-ONR-SW06-09	
9. SPONSORING/MONITORING AGENCY NAME(S) AND ADDRESS(ES) Office of Naval Research Theresa Paluszkiwicz, Program Manager 875 North Randolph St. Arlington VA 22203-1995				10. SPONSOR/MONITOR'S ACRONYM(S) ONR	
				11. SPONSOR/MONITOR'S REPORT NUMBER(S)	
12. DISTRIBUTION/AVAILABILITY STATEMENT Approved for public release; distribution is unlimited.					
20091023183					
13. SUPPLEMENTARY NOTES					
14. ABSTRACT Non-Linear Internal Wave (NLIW) packets are ubiquitous, yet they arrive with a high degree of irregularity in coastal oceans. Through this award, three water-column moorings and four bottom landers were deployed during the New Jersey Shelf Shallow Water 2006 (SW06) experiment. These moorings span the generation region for NLIWs and have been used to (1) quantify the structure, energetics, and timing of O(100) wave packets, (2) elucidate wave formation, the process internal tide steepening, (3) understand what sets the conversion efficiency between barotropic tide, baroclinic tide, and NLIW packets, and (3) determine the external factors (seasonal/mesoscale/tidal) that control NLIW energetics and variability in the coastal environment.					
15. SUBJECT TERMS Nonlinear Internal Waves, Turbulence, Internal Tides, Moored Observations					
16. SECURITY CLASSIFICATION OF:			17. LIMITATION OF ABSTRACT UU	18. NUMBER OF PAGES 9	19a. NAME OF RESPONSIBLE PERSON Jonathan Nash
a. REPORT U	b. ABSTRACT U	c. THIS PAGE U			19b. TELEPHONE NUMBER (Include area code) 541 737-4573

INSTRUCTIONS FOR COMPLETING SF 298

1. REPORT DATE. Full publication date, including day, month, if available. Must cite at least the year and be Year 2000 compliant, e.g. 30-06-1998; xx-06-1998; xx-xx-1998.

2. REPORT TYPE. State the type of report, such as final, technical, interim, memorandum, master's thesis, progress, quarterly, research, special, group study, etc.

3. DATES COVERED. Indicate the time during which the work was performed and the report was written, e.g., Jun 1997 - Jun 1998; 1-10 Jun 1996; May - Nov 1998; Nov 1998.

4. TITLE. Enter title and subtitle with volume number and part number, if applicable. On classified documents, enter the title classification in parentheses.

5a. CONTRACT NUMBER. Enter all contract numbers as they appear in the report, e.g. F33615-86-C-5169.

5b. GRANT NUMBER. Enter all grant numbers as they appear in the report, e.g. AFOSR-82-1234.

5c. PROGRAM ELEMENT NUMBER. Enter all program element numbers as they appear in the report, e.g. 61101A.

5d. PROJECT NUMBER. Enter all project numbers as they appear in the report, e.g. 1F665702D1257; ILIR.

5e. TASK NUMBER. Enter all task numbers as they appear in the report, e.g. 05; RF0330201; T4112.

5f. WORK UNIT NUMBER. Enter all work unit numbers as they appear in the report, e.g. 001; AFAPL30480105.

6. AUTHOR(S). Enter name(s) of person(s) responsible for writing the report, performing the research, or credited with the content of the report. The form of entry is the last name, first name, middle initial, and additional qualifiers separated by commas, e.g. Smith, Richard, J, Jr.

7. PERFORMING ORGANIZATION NAME(S) AND ADDRESS(ES). Self-explanatory.

8. PERFORMING ORGANIZATION REPORT NUMBER. Enter all unique alphanumeric report numbers assigned by the performing organization, e.g. BRL-1234; AFWL-TR-85-4017-Vol-21-PT-2.

9. SPONSORING/MONITORING AGENCY NAME(S) AND ADDRESS(ES). Enter the name and address of the organization(s) financially responsible for and monitoring the work.

10. SPONSOR/MONITOR'S ACRONYM(S). Enter, if available, e.g. BRL, ARDEC, NADC.

11. SPONSOR/MONITOR'S REPORT NUMBER(S). Enter report number as assigned by the sponsoring/monitoring agency, if available, e.g. BRL-TR-829; -215.

12. DISTRIBUTION/AVAILABILITY STATEMENT. Use agency-mandated availability statements to indicate the public availability or distribution limitations of the report. If additional limitations/ restrictions or special markings are indicated, follow agency authorization procedures, e.g. RD/FRD, PROPIN, ITAR, etc. Include copyright information.

13. SUPPLEMENTARY NOTES. Enter information not included elsewhere such as: prepared in cooperation with; translation of; report supersedes; old edition number, etc.

14. ABSTRACT. A brief (approximately 200 words) factual summary of the most significant information.

15. SUBJECT TERMS. Key words or phrases identifying major concepts in the report.

16. SECURITY CLASSIFICATION. Enter security classification in accordance with security classification regulations, e.g. U, C, S, etc. If this form contains classified information, stamp classification level on the top and bottom of this page.

17. LIMITATION OF ABSTRACT. This block must be completed to assign a distribution limitation to the abstract. Enter UU (Unclassified Unlimited) or SAR (Same as Report). An entry in this block is necessary if the abstract is to be limited.

Moored Observations to Define the Structure and Energetics of Non-Linear Internal Wave Generation over the New Jersey Shelf

Final Report for Award N00014-05-1-0271 – Aug 2009

Jonathan D. Nash
College of Oceanic & Atmospheric Sciences
Oregon State University
Corvallis OR 97331-5503
ph: (541) 737-4573 fx: (541) 737-2064
email: nash@coas.oregonstate.edu
<http://mixing.coas.oregonstate.edu/>

ABSTRACT

Non-Linear Internal Wave (NLIW) packets are ubiquitous, yet they arrive with a high degree of irregularity in coastal oceans. Through this award, three water-column moorings and four bottom landers were deployed during the New Jersey Shelf Shallow Water 2006 (SW06) experiment. These moorings span the generation region for NLIWs and have been used to (1) quantify the structure, energetics, and timing of $O(100)$ wave packets, (2) elucidate wave formation, the process internal tide steepening, (3) understand what sets the conversion efficiency between barotropic tide, baroclinic tide, and NLIW packets, and (3) determine the external factors (seasonal/mesoscale/tidal) that control NLIW energetics and variability in the coastal environment.

LONG-TERM GOALS

This work is part of my goal to obtain a more complete and fundamental understanding of the hierarchy of processes which transfer energy and momentum from large scales, feed the internal wavefield, and ultimately dissipate through turbulence. This cascade significantly impacts the acoustic, optical, and biogeochemical properties of the water column. Non-Linear Internal Waves (NLIWs) represent one such pathway.

APPROACH

Three water-column moorings and four bottom landers were deployed to capture the full water column variability of density (sound speed), velocity and bottom pressure in the region of internal tide and NLIW generation. Combined with the other SW06 resources, the 3D wave structure, propagation direction, baroclinic energy density and energy flux were determined. Data integration with wave-tracking experiments were used to confirm moored energy/flux estimates. Divergences of energy flux indicate the generation locations and conversion efficiencies; phasing of baroclinic signals (and their relationship to the barotropic tide) elucidates mechanisms. Model-data comparisons are used to aid interpretation.

WORK COMPLETED

A full census of NLIW timing, structure, propagation direction, and wave energetics at all SW06 ADCP moorings has been completed (SW29, SW30, SW32, SW34, SW37, SW38, SW39, SW41, SW42 & SW43). This forms a wave inventory database used for higher-order calculations. This database, CTD-ADCP mooring data (w/ Duda) and ADCP/P-pod bottom lander data (w/ Moum) are available for use by SW06 collaborators.

RESULTS

Analysis of NLIW timing, 3D structure and energy at SW06 reveals that this site is highly complex – typical of coastal internal wave climates. Not only was the amplitude, timing and propagation direction highly variable, but the NLIW energy was found to be unrelated (or inversely related?) to the strength of the shelfbreak barotropic tide (Figure 1). Instead, NLIW energy levels are found to be highly correlated to the strength of the internal tide. The complex NLIW climate at SW06 site dramatically contrasts the regularity of waves and timing in the South China Sea. This contrast may simply be a reflection of the relative complexities of the internal tide in these two regions.

So our original question “*What sets the intensity of NLIWs on the continental shelf?*” has evolved into... “*What sets the structure, intensity and direction of the internal wave energy flux at the shelfbreak?*”

While topography, seasonal stratification, and barotropic forcing are certainly important, these do not explain the low-frequency trends in baroclinic energy, nor do they account for the packet-to-packet variability in NLIW shape, amplitude or timing. Subtle changes in the location of shelfbreak fronts, sub-tidal currents, near-inertial variability, and other factors must play a role in setting the strength of the internal tide, its nonlinear steepening, and subsequent propagation of NLIWs.

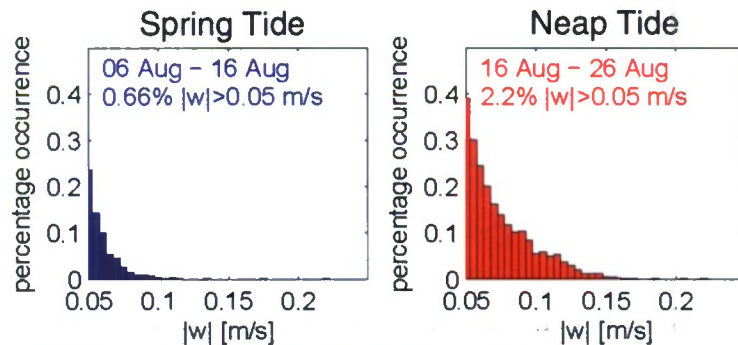


Figure 0: Distribution of vertical velocity at SW37 (70-m isobath) during spring (left) and neap (right) August 2006 tides. The average vertical velocity and energy of NLIW packets during the August 2006 spring tide was about 25% of that during the following neap tide. In contrast, barotropic velocities during spring tides were almost a factor of 2 stronger than the neap.

The following outlines progress to date in 5 major areas:

1) *NLIW Pressure p_w*

In collaboration with Jim Moum, bottom pressure was directly measured on three bottom landers. Our analysis (Moum and Nash 2008) confirms that (1) we are correctly computing the wave-induced internal pressure $p_w = p_{surf} + p_{hyd} + p_{nhyd}$ and (2) wave amplitude, timing and sign (depression vs. elevation) can be measured from bottom

pressure P-pods. This measurement provides a means for detecting and quantifying waves both waves of depression and elevation, which is significant, as the latter have no detectable sea surface signature.

2) NLIW Energy and Energy Flux

NLIW energy ($E = APE + KE$) and energy flux ($F_E = \langle u_w p_w \rangle + u_w E$) have been computed for all waves during the experiment at all ADCP moorings; a summary from five inshore moorings is shown in figure 2. The nonlinear contribution to the energy flux ($u_w E$) is found to be appreciable for most waves (usually $>25\%$ of F_E), and that on average the flux is represented by $F_E \approx c E$, confirming our findings based on waves of elevation (Moum et al 2007). Moreover, for the first wave in each packet, energy is found to be equipartitioned ($KE \approx APE$) so that $F_E \approx 2 c KE$, (Shroyer et al 2008). This result provides a simplified means of estimating NLIW energy and flux, if the result is indeed as universal as it appears to be.

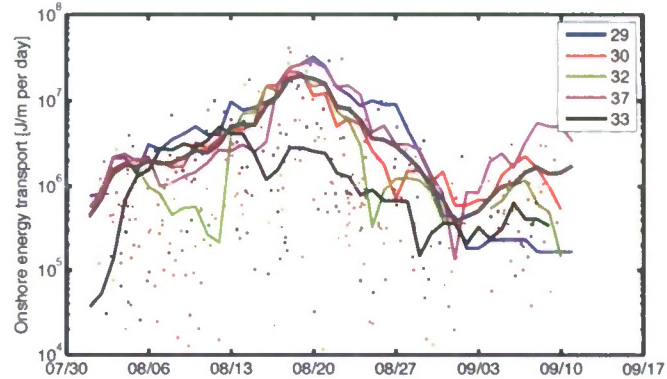
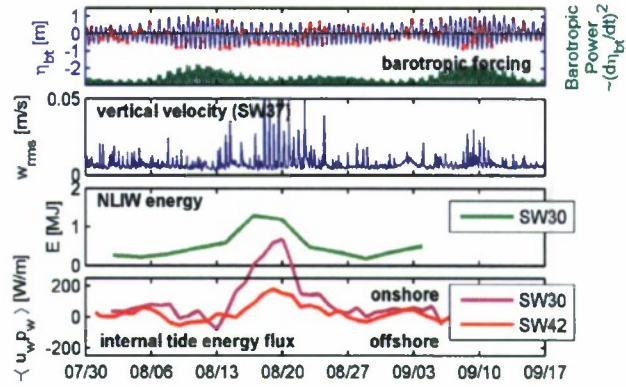


Figure 1: Time-series showing onshore transport of energy by NLIWs at 5 inshore moorings. Dots represent the energy transport within individual wave packets; solid lines represent 24-h averages (mean of the 5 moorings in grey). The peak energy near Aug 20 occurs during neap tides and is a factor of ten greater than that during spring tides. Mooring SW33, located 25 km N of the central cluster, recorded much lower NLIW energies and exhibits a different temporal pattern.

3) NLIW Temporal and Spatial Variability

NLIW amplitudes during SW06 showed strong along-shelf variability, with factor-of-ten differences over just 15 km separation (Figure 2; compare SW32 and SW33.) Moreover, NLIW energies were highly variable on synoptic timescales (Figure 2) and poorly correlated with the barotropic tide (Figure 3). NLIW variability is instead explained by the variability in the internal tide, which shows a similar temporal structure. This confirms that NLIW intensity is controlled by the strength of the internal tide. A more complete understanding of the mechanisms that set the strength of the internal tide (both spatial and temporal variability) is necessary for prediction of the NLIW generation.

Figure 1: Summary of NLIW temporal variability. Forcing by the barotropic tide (elevation & power; top row) is poorly correlated with NLIW vertical velocity at SW37, the 70-m isobath (2nd row). Red dots in upper panel represent wave arrival times at SW37. The resultant NLIW energy (3rd row) is found to covary with the internal tide energy flux, both inshore and at the shelfbreak (bottom row).



Wave arrival times were moderately phase-locked to the barotropic tide only during 8/16-8/23 (red dots in upper panel, figure 3) – a period when NLIW packets arrived on the leading edge of the steepened internal tide (figure 4). But even during this period, there is no one-to-one correspondence between the strength of internal tide pulses at the shelf break (upper panel) and the amplitude of NLIW packets that arrive at the 80-m isobath 7 hours later (Moum and Nash, 2008 – figure 2). Influences from the mesoscale stratification & velocity, deviations in internal tide phasing or direction, and/or interactions with other waves must be responsible for this complexity.

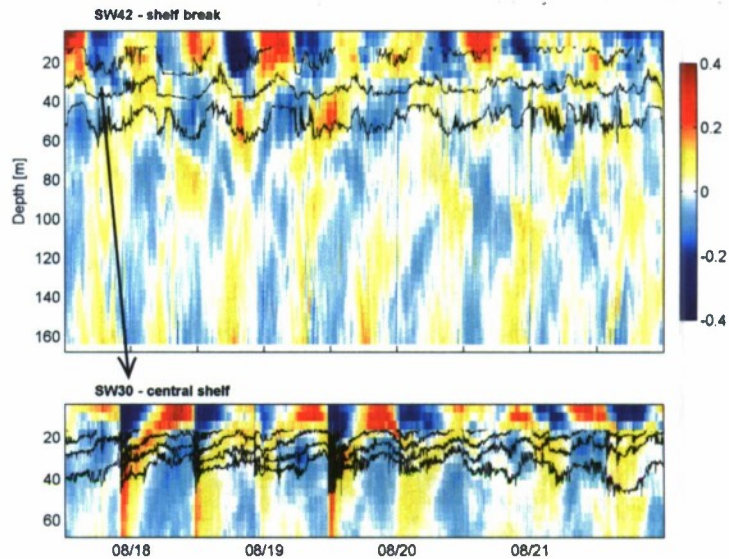


Figure 2: Depth-time plot of velocity (color) and density (contours) at the shelfbreak (top) and 70-m isobath (bottom). NLIWs appear inshore on the leading edge of the steepened internal tide.

4) Internal Tide Structure & Generation

SW06 shelfbreak moorings reveal strong gradients in the internal tide energy flux, computed following Nash et al (2005). During most time periods, the shelf break is one source of the internal tide (Baines 1982), with energy radiating both onshore towards the shelf and offshore over the slope, roughly along tidal characteristics (Figure 5). However, during the 16-26 Aug period of strong

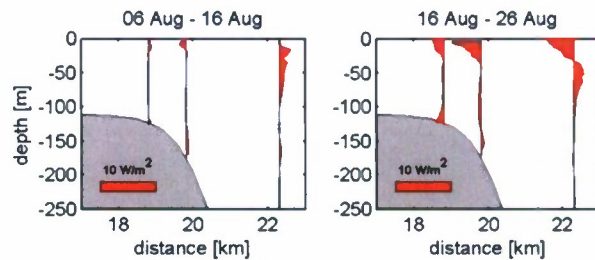


Figure 2: Energy flux profiles near the shelfbreak during periods of weak (left) and strong (right) NLIW activity. A 5 W/m² onshore internal tide occurs at all stations during strong NLIW activity.

NLIW activity, the internal tide source appears to have shifted offshore to at least the 500-m isobath. The source of this baroclinic energy and the reason for its intensification are not currently known. However, such variability is common of many continental shelves – from the US east and west coasts (Nash et al 2004, Lerczak et al 2003, Nash et al 2007) to the SCS (Duda and Rainville, 2007).

5) *NLIW/ Internal Tide covariance and conversion:*

Using our census of NLIW events and energetics, we are able to assess the conversion efficiencies from the quasi-linear internal tide to NLIWs, and by combining these with measured dissipation estimates (both direct, from Moum's wave tracking, and indirect, from the decay of NLIW energy fluxes), will provide a complete description of the energetics through the lifetime of a NLIW packet.

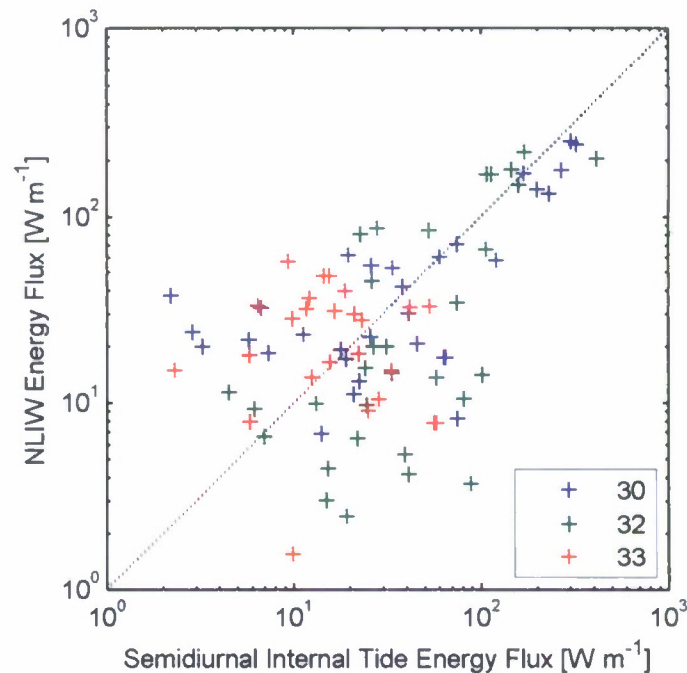


Figure 6: At the central cluster (SW30 & 32), the NLIW energy flux carries most of the energy associated with the internal tide. At the northern site (SW33), the relationship between NLIW and internal tide energetics is less clear.

MENTORSHIP & COLLABORATION

In addition to the above analyses, this award supported Nash in mentoring doctoral candidate Emily Shroyer (now Ph.D., graduated Sept 2009 and currently a WHOI postdoctoral scholar; co-advised w/ J. Moum). Data, analyses, and contributions to five papers coauthored with E. Shroyer and J. Moum were supported by this grant. Papers in press, under review, or soon to be submitted by Shroyer, Moum and Nash are titled:

- Observations of polarity reversal in shoaling nonlinear waves
- Mode-2 waves on the continental shelf: Ephemeral components of the nonlinear internal wave field
- Vertical Heat Flux and Lateral Particle Transport in Nonlinear Internal Waves
- Nonlinear Internal Waves over New Jersey's continental shelf
- Energy transformation and dissipation in the evolving NLIW field over New Jersey continental shelf
- Mesoscale influences on the generation of the internal tide and nonlinear internal waves over New Jersey's continental shelf.

IMPACT/APPLICATION

These analyses provide the physical understanding of mechanisms so NLIW occurrence, energetics, and propagation characteristics can be predicted. This will lead to a general understanding of processes to aid NLIW prediction elsewhere.

RELATED PROJECTS

These observations and analysis are part of a coordinated effort to define the structure, energetics and timing of the signals that emerge from the interaction of the stratification with the shelf break for other DRI participants. In addition, a combination of long and short-term programs on the New Jersey shelf (initiated by personnel at Rutgers University, the CoOP-sponsored LATTE program, LEAR and AWACS) includes additional moorings, gliders, and surface velocity from long-range (100 nm) CODAR coverage. These projects are highly synergistic and will be used to study a wide variety of physical, biological and acoustic properties of the region.

Despite dramatic differences in NLIW climate at the SCS and NJ shelf sites, there are important common threads in these two NLIWI DRI projects. Most significant, NLIWs seem to first appear at the internal tide surface reflection at both SCS and SW06 sites (albeit with dramatically different signal strengths). Differences in NLIW regularity and three dimensionality at each site may arise solely from the contrasting complexities in the internal tide: SW06→ complicated, SCS→simple. If this is indeed the case, accurate prediction of the linear, internal tide may be sufficient to predict NLIW energy levels. A common connection between the two NLIWI experiments may be the importance of mesoscale/seasonal changes to NLIW generation and variability. We expect to elucidate these connections through participation in the Internal Waves in Straits Experiment (IWISE).

REFERENCES

- Baines, P. G., 1982: On internal tide generation models. *Deep Sea Res.*, 29, 307–338
- Duda, T. F., and L. Rainville, 2008: Diurnal and semidiurnal internal tide energy flux at a continental slope in the South China Sea, *J. Geophys. Res.*, 113, C03025, doi:10.1029/2007JC004418.
- Lerczak, J.A., C.D. Winant and M. C. Hendershott, 2003: Observations of the semidiurnal internal tide on the southern California slope and shelf. *J. Geophys. Res.* **108**(C3) 3068
- Moum, J.N., J.M. Klymak, J.D. Nash, A. Perlin and W.D. Smyth, 2007a. Energy transport by nonlinear internal waves, *J. Phys. Oceanogr.*, **37**, 1968-1988.
- Moum, J.N. and J.D. Nash, 2008: Seafloor pressure measurements of nonlinear internal waves. *J. Phys. Oceanogr.*, 38(2), 481-491, doi:10.1175/2007JPO3736.1
- Nash, J.D., E. Kunze, J. M. Toole and R. W. Schmitt, 2004: Internal tide reflection and turbulent mixing on the continental slope, *J. Phys. Oceanogr.* **34**(5), 1117-1134

- Nash, J.D., M.H. Alford and E. Kunze, 2005: Estimating Internal Wave Energy Fluxes in the Ocean, *J. Atmos. Ocean Tech.*, **22** (10), 1551-1570.
- Nash, J. D., M. H. Alford, E. Kunze, K. Martini, and S. Kelly, 2007: Hotspots of deep ocean mixing on the Oregon continental slope, *Geophys. Res. Lett.*, **34**, L01605, doi:10.1029/2006GL028170.
- Nash, J.D., E. Shroyer, J. Moum, T. Duda, H. Graber, J. Irish and J. Lynch, 2009: Low-frequency Variability of Nonlinear Internal Waves on the New Jersey Shelf. *J Phys Oceanogr.*, *in prep*
- Shroyer, E.L., J.N. Moum and J.D. Nash, 2009: Observations of polarity reversal in shoaling nonlinear waves. *J. Phys. Oceanogr.*, **39**, 691-701

PUBLICATIONS supported by this award

- Moum, J.N., J.M. Klymak, J.D. Nash, A. Perlin and W.D. Smyth, 2007a. Energy transport by nonlinear internal waves, *J. Phys. Oceanogr.*, **37**, 1968-1988.
- Moum, J.N. and J.D. Nash, 2008: Seafloor pressure measurements of nonlinear internal waves. *J. Phys. Oceanogr.*, **38**(2), 481-491, doi:10.1175/2007JPO3736.1
- Tang, D.J., J. Moum, J. Lynch, P. Abbot, R. Chapman, P. Dahl, T. Duda, G. Gawarkiewicz, S. Glenn, J. Goff, H. Graber, J. Kemp, A. Maffei, J. Nash, & A. Newhall, 2007. Shallow Water '06 – A Joint Acoustic Propagation / Nonlinear Internal Wave Physics Experiment, *Oceanography*, **20**(4), 156-167
- Shroyer, E.L., J.N. Moum and J.D. Nash, 2009: Observations of polarity reversal in shoaling nonlinear waves. *J. Phys. Oceanogr.*, **39**, 691-701
- Shroyer, E.; Moum, J. & Nash, J., 2009: Mode-2 waves on the continental shelf: Ephemeral components of the nonlinear internal wave field *J. Geophys. Res.*, 2009, *under review*
- Shroyer, E.; Moum, J. & Nash, J., 2009: Vertical Heat Flux and Lateral Particle Transport in Nonlinear Internal Waves, *Geophys Res Let.*, *submitted*
- Nash, J.D., E. Shroyer, J. Moum, T. Duda, H. Graber, J. Irish and J. Lynch, 2009: Mesoscale influences on the generation of the internal tide and nonlinear internal waves over New Jersey's continental shelf. *J Phys Oceanogr.*, *in prep*
- Shroyer, E.L., J.N. Moum and J.D. Nash, 2009: Nonlinear Internal Waves over New Jersey's continental shelf, *J. Geophys. Res.*, *in prep*
- Shroyer, E.L., J.N. Moum and J.D. Nash, 2009: Energy transformation and dissipation in the evolving NLIW field over New Jersey continental shelf. *J Phys Oceanogr.*, *in prep*

TALKS presented with the support of this award

- Nash, J.D.(2009) Why is NLIW variability on Continental Shelves so complex? ONR Progress review (Chicago, June 2009)

- Nash, Kelly, Martini, Alford, Kunze Internal waves and turbulence over a rough and near-critical continental slope (DNVA-RSE Norway-Scotland Internal Waves Symposium, Oslo, Norway, October 2008)
- Nash, Shroyer, Kelly & Moum: (2008) Tidal(?) Generation of NLIWs on a Continental Shelf (AGU 2008 Fall Meeting)
- Nash, Moum, Shroyer, Duda, Irish & Lynch (2008) Variability of NonLinear Internal Waves on the Continental Shelf (AGU Ocean Sciences 2008, Orlando FL)
- Shroyer, Moum & Nash (2008) Shoaling Nonlinear Internal Waves (AGU Ocean Sciences 2008, Orlando FL)
- Nash, J.D., Generation of Nonlinear Internal Waves on the continental shelf: preliminary results from NLIWI-SW06 (2007) ONR NW progress Review, UW-APL (27 Feb – 01 Mar)
- Shroyer, E., J.N. Moum and J.D. Nash (2006), Observations of Bottom-Trapped Large Amplitude Nonlinear Internal Waves off Oregon, *Eos Trans. AGU*, 87(36), Ocean Sci. Meet. Suppl., Abstract OS15A-14