

OPERATIONAL AND SCIENTIFIC NOTES

DISCOVERY OF AN OVERWINTERING ADULT FEMALE OF *CULISETA ANNULATA* IN BALTIMORE

MICHAEL E. FARAN AND CHARLES L. BAILEY

Department of Entomology, Walter Reed Army Institute of Research, Washington, D.C. 20012

During an ongoing study on the overwintering biology of *Culex (Culex) pipiens* Linnaeus 1758 and St. Louis encephalitis virus, a team from the Walter Reed Army Institute of Research collected an adult female of *Culiseta (Culiseta) annulata* (Schrank 1776). The single female was found on 8 March 1978, resting on a wall inside "Outer Battery Bomb Proof No. 2" at Fort McHenry National Monument and Historic Shrine, Baltimore, Maryland. Fort McHenry, built to protect Baltimore against water approaches by enemy vessels, is located on Whetstone Point on the Patapsco River, 4.8 km from the center of Baltimore. Outer Battery Bomb Proof No. 2, constructed during the 1860's or 70's, is a red brick, munitions bunker partially buried under a 2 m earthen mound. The floor of this bunker is about 4 m below ground level and is reached by stairs entering at the northwest corner. The female of *annulata* was resting upon the north wall of the bomb proof approximately 1 m above the floor and 2 m east of the stairs. The wall was moist and coated to varying degrees with a layer of mineral deposits. The floor of the bunker was flooded with water to a depth of about 0.3 m. In addition to the single female of *annulata* captured, 41 adult females of *Cx. pipiens* were collected.

The specimen of *annulata* was taken to the laboratory and was held for 20 days at 27°C ± 0.5, 60–90% relative humidity and a long day photoperiod of 16:8 h light: dark cycle. The female fed on a 1-day old chick on 29 March and was then isolated in a 9-dram vial partially filled with water in the hope of obtaining eggs from which progeny could be individually reared. Unfortunately, the female was found dead on 3 April prior to oviposition. The female was then taken to the Medical Entomology Project, Smithsonian Institution, for detailed morphological study.

On first examination we believed that this female was a specimen of the western North American species, *Culiseta (Culiseta) particeps*

(Adams 1903), as it had subapical light-scaled bands on the femora which, in the Nearctic, are used to distinguish *particeps* from the Holarctic species, *Cs. (Cus.) alaskaensis* (Ludlow 1906). However, we found that this specimen of *annulata* could easily be distinguished from *particeps* in the adult female by the following characters; (1) a light-scaled medial band on tarsomere 1 of each pair of legs, (2) larger light-scaled basal bands on fore-, mid- and hind tarsomeres 2–4, (3) absence of a light-scaled basal band on hind tarsomere 5 and, possibly (4) cross-veins r-m and m-cu with fewer scales and scales usually restricted to anterior portion of crossvein.

Presently, *annulata* is listed by Knight and Stone (1977) as including 2 subspecies, *annulata* and *subochrea* (Edwards 1921). We concur with Mohrig (1969) and treat these latter taxa as separate species. We observed that the adults of *annulata* differ from those of *subochrea* in several different characters as do, reportedly, the larvae and male genitalia (Marshall 1938; Natvig 1948). The specimen from Ft. McHenry is clearly *annulata* (Fig. 1) and not *subochrea*.

Culiseta annulata is distributed throughout western and central Europe, Scandinavia, USSR (east to Leningrad region, north to Estonia, and the Caucasus and Transcaucasian mountains), Middle Asia, the Mediterranean and North Africa.

The immatures have been collected in the Palearctic region in both artificial and natural aquatic habitats such as ditches, stagnant pools, puddles, marshes, barrels and cement reservoirs, in open as well as shaded areas, and in fresh and brackish water (Wesenberg-Lund 1921; Marshall 1938; Natvig 1948; Gutsevich, Monchadskii and Shtakel'berg 1971). The immatures seem to tolerate, and possibly prefer, habitats with moderate amounts of organic pollution. They have been collected in large numbers in "manure-water employed for gardening purposes" (Marshall 1938) and in ditches with *Cx. pipiens* "mainly consisting of [cattle] urine" (Wesenberg-Lund 1921).

There is evidence to suggest that Tahyna virus, a member of the California group of arboviruses, is transovarially transmitted in *annulata*. Bardos et al. (1978) isolated the virus from a pool of first generation, field collected, *annulata* larvae from Moravia, Czechoslovakia.

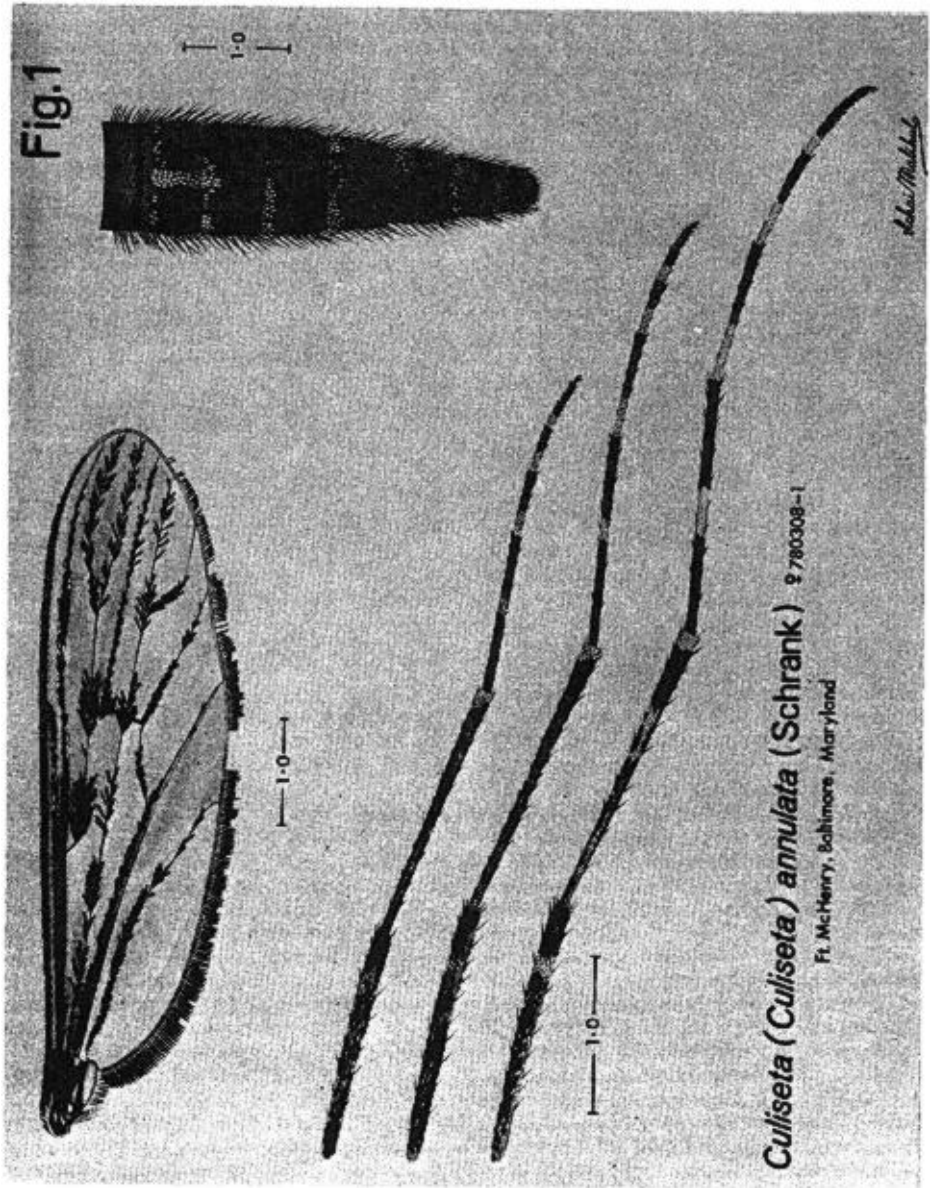
In regions having relatively mild winters, reportedly *annulata* is capable of overwintering

Report Documentation Page

Form Approved
OMB No. 0704-0188

Public reporting burden for the collection of information is estimated to average 1 hour per response, including the time for reviewing instructions, searching existing data sources, gathering and maintaining the data needed, and completing and reviewing the collection of information. Send comments regarding this burden estimate or any other aspect of this collection of information, including suggestions for reducing this burden, to Washington Headquarters Services, Directorate for Information Operations and Reports, 1215 Jefferson Davis Highway, Suite 1204, Arlington VA 22202-4302. Respondents should be aware that notwithstanding any other provision of law, no person shall be subject to a penalty for failing to comply with a collection of information if it does not display a currently valid OMB control number.

1. REPORT DATE JUN 1980		2. REPORT TYPE		3. DATES COVERED 00-00-1980 to 00-00-1980	
4. TITLE AND SUBTITLE Discovery of an Overwintering Adult Female of Culiseta Annulata in Baltimore				5a. CONTRACT NUMBER	
				5b. GRANT NUMBER	
				5c. PROGRAM ELEMENT NUMBER	
6. AUTHOR(S)				5d. PROJECT NUMBER	
				5e. TASK NUMBER	
				5f. WORK UNIT NUMBER	
7. PERFORMING ORGANIZATION NAME(S) AND ADDRESS(ES) Walter Reed Army Institute of Research, Department of Entomology, Washington, DC, 20012				8. PERFORMING ORGANIZATION REPORT NUMBER	
9. SPONSORING/MONITORING AGENCY NAME(S) AND ADDRESS(ES)				10. SPONSOR/MONITOR'S ACRONYM(S)	
				11. SPONSOR/MONITOR'S REPORT NUMBER(S)	
12. DISTRIBUTION/AVAILABILITY STATEMENT Approved for public release; distribution unlimited					
13. SUPPLEMENTARY NOTES					
14. ABSTRACT					
15. SUBJECT TERMS					
16. SECURITY CLASSIFICATION OF:			17. LIMITATION OF ABSTRACT	18. NUMBER OF PAGES	19a. NAME OF RESPONSIBLE PERSON
a. REPORT unclassified	b. ABSTRACT unclassified	c. THIS PAGE unclassified			



as an adult female or as an immature. Marshall (1938) stated that adult males, pupae and larvae of all 4 stages have been collected every month of the year on Hayling Island, Great Britain. Likewise, Gutsevich et al. (1971) stated that along the southern coast of Crimea this species hibernates in the larval stage. Marshall wrote that in Great Britain the adult females undergo what he termed partial hibernation. Whenever conditions are favorable during the winter females become active and seek a blood meal, and then, develop eggs and oviposit. In areas where the winters are more severe such as in northern Europe and northern USSR, *annulata* overwinters as an adult female. Throughout most of its range (except in the most southern regions) the females spend the winters in places such as stables, attics, cellars, hollow trees, stacks of wood, etc. (Marshall 1938; Wesenberg-Lund 1921). Pertinent to the female collected at Ft. McHenry, Wesenberg-Lund wrote, "If in the winter we examine the deep frostless cellars of our houses, we find among the numerous *C. pipiens* a few larger ones, highly characteristic because of their spotted wing and ringed tarsi. This is *T. [Theobaldia] annulata* [= *Cs. annulata*] the largest of our mosquitoes."

Previously, Hughes (1961) reported that a specimen of *annulata* was collected dead on an aircraft. We assume this report refers to a specimen in the Smithsonian collection with the following labels, "NY Int. Airport/J. Hughes 890/IX-59-25993/Aircraft/Culiseta subochrea/Stone (Edw.)." Unfortunately, as the label indicated, this was a female of *subochrea* and not *annulata*. We did, however, examine an adult female of *annulata* that had been collected on an airplane with the following labels, "17. Plane SAS.OY-AAP/Arr. N.Y. 10-2-50/From Stockholm//Culicidae Culiseta annulata (Schrank)." Since the closest international airport to Ft. McHenry is 20 km removed, the possibility that this female of *annulata* was introduced by an aircraft is remote.

Because of this species' ability to inhabit diverse aquatic environments and to overwinter as an adult female (or immature, climate permitting), it is possible that a specimen or specimens of *annulata* could easily survive a transatlantic voyage protected in any number of places aboard a ship. Since many large freighters do moor at docks adjacent to, or very near, Ft. McHenry, it is most likely that this specimen or one of its ancestors was introduced into the Ft. McHenry-Baltimore area by a ship traveling from Europe. As the specimen was in good condition, it is possible that a

breeding population of *annulata* has been established in the vicinity of Ft. McHenry, and the single specimen did not simply ride aboard a ship as an adult, then find its way into the bunker. Although fresh water habitats are scarce near Bomb Proof No. 2, there was, until October 1978, a brackish marsh about 500 m southwest of the bomb proof. It is conceivable that the immatures may have occurred in that marsh, or, perhaps *annulata* carries out its entire life cycle inside Bomb Proof No. 2 or one of the other bunkers, as water was present on the floor of the former on every occasion that we visited the fort. A search for the immatures of *annulata* on 27 April 1979 was unsuccessful.

ACKNOWLEDGMENTS

We wish to thank David E. Hayes, Thomas P. Gargan and Nancy Kuenzel who participated in the overwintering studies on *Culex pipiens*. We are most grateful to E. L. Peyton and Ronald A. Ward for critically reviewing the manuscript. Vichai Malikul, scientific illustrator at the Medical Entomology Project, Smithsonian Institution, Washington, D. C., kindly prepared the illustration under the auspices of U. S. Army Medical Research and Development Command Research Contract DAMD-17-74C-4086.

References Cited

- Bardos, V., Ryba, J., Hubalek, Z. and Olejnicek, J. 1978. Virological examination of mosquito larvae from southern Moravia. *Folia Parasitol. (Prague)* 25:75-78.
- Gutsevich, A. V., Monchadskii, A. S. and Shtakel'berg, A. A. 1971. Fauna of the U.S.S.R. Diptera Volume 3, No. 4. Mosquitoes family *Culicidae*. Academy of Sciences USSR, Zoological Institute, New Series No. 100. *Trans. from Russian by Israel Program for Scientific Translations* 1974. 408 p.
- Hughes, J. H. 1961. Mosquito interceptions and related problems in aerial traffic arriving in the United States. *Mosquito News* 21:93-100.
- Knight, K. L. and Stone, A. 1977. A catalog of the mosquitoes of the world (Diptera: Culicidae). Thomas Say Found., Entomol. Soc. Am. Vol. 6, 611 p.
- Marshall, J. F. 1938. The British mosquitoes. William Clowes and Sons, LTD, London and Beccles. 341 p.
- Mohrig, W. 1969. Die Culiciden Deutschlands. *Parasitol. Schriftren.* 18:1-260.

- Natvig, L. R. 1948. Norsk Entomologisk Tidsskrift. Suppl. I. Contributions to the knowledge of the Danish and Fennoscandian mosquitoes Culicini. A. W. Broggers Boktrykkeri A/S, Oslo. 561 p.
- Wesenberg-Lund, C. 1921. Contributions to the biology of the Danish Culicidae. Hovedkommissionær: Andr. Fred. Host & Son, KGL. Hof-Boghandel, Copenhagen. 210 p.