

**TECHNICAL REPORT
NATICK/TR-10/006**



AD _____

AN FMRI STUDY OF OLFACTORY CUES TO PERCEPTION OF CONSPECIFIC STRESS

by
Lilianne R. Mujica-Parodi

**State University of New York at Stony Brook
Stony Brook, NY 11794-8181**

April 2010

Final Report
September 2006 – May 2008

Approved for public release: distribution unlimited.

Prepared for
**U.S. Army Natick Soldier Research, Development and Engineering Center
Natick, Massachusetts 01760-5056**

DISCLAIMERS

The findings contained in this report are not to be construed as an official Department of the Army position unless so designated by other authorized documents.

Citation of trade names in this report does not constitute an official endorsement or approval of the use of such items.

DESTRUCTION NOTICE

For Classified Documents:

Follow the procedures in DoD 5200.22-M, Industrial Security Manual, Section II-19 or DoD 5200.1-R, Information Security Program Regulation, Chapter IX.

For Unclassified/Limited Distribution Documents:

Destroy by any method that prevents disclosure of contents or reconstruction of the document.

REPORT DOCUMENTATION PAGE

Form Approved
OMB No. 0704-0188

Public reporting burden for this collection of information is estimated to average 1 hour per response, including the time for reviewing instructions, searching existing data sources, gathering and maintaining the data needed, and completing and reviewing this collection of information. Send comments regarding this burden estimate or any other aspect of this collection of information, including suggestions for reducing this burden to Department of Defense, Washington Headquarters Services, Directorate for Information Operations and Reports (0704-0188), 1215 Jefferson Davis Highway, Suite 1204, Arlington, VA 22202-4302. Respondents should be aware that notwithstanding any other provision of law, no person shall be subject to any penalty for failing to comply with a collection of information if it does not display a currently valid OMB control number.

PLEASE DO NOT RETURN YOUR FORM TO THE ABOVE ADDRESS.

1. REPORT DATE (DD-MM-YYYY) 09-04-2010		2. REPORT TYPE Final		3. DATES COVERED (From - To) September 2006 – May 2008	
4. TITLE AND SUBTITLE AN FMRI STUDY OF OLFACTORY CUES TO PERCEPTION OF CONSPECIFIC STRESS				5a. CONTRACT NUMBER W911QY-06-C-0106	
				5b. GRANT NUMBER	
				5c. PROGRAM ELEMENT NUMBER	
6. AUTHOR(S) Lilianne R. Mujica-Parodi				5d. PROJECT NUMBER	
				5e. TASK NUMBER	
				5f. WORK UNIT NUMBER	
7. PERFORMING ORGANIZATION NAME(S) AND ADDRESS(ES) State University of New York at Stony Brook Department of Biomedical Engineering Stony Brook, NY 11794-8181				8. PERFORMING ORGANIZATION REPORT NUMBER	
9. SPONSORING / MONITORING AGENCY NAME(S) AND ADDRESS(ES) U.S Army Natick Soldier Research, Development and Engineering Center ATTN: RDNS-TSA (H. Girolamo) Kansas St., Natick, MA 01760-5056				10. SPONSOR/MONITOR'S ACRONYM(S) NSRDEC	
				11. SPONSOR/MONITOR'S REPORT NUMBER(S) NATICK/TR-10/006	
12. DISTRIBUTION / AVAILABILITY STATEMENT Approved for public release: distribution unlimited.					
13. SUPPLEMENTARY NOTES					
14. ABSTRACT Alarm substances are airborne chemical signals released by an individual into the environment that communicate emotional stress between conspecifics. This report documents tests to determine whether humans, like other mammals, are able to detect emotional stress in others by chemosensory cues. Sweat samples collected from individuals undergoing an acute emotional stressor, with exercise as a control, were pooled and presented to a separate group of participants (blind to condition) during four experiments. In an fMRI experiment and its replication, it was found that scanned participants showed amygdala activation in response to samples obtained from donors undergoing an emotional, but not physical, stressor. An odor-discrimination experiment suggested the effect was primarily due to emotional, and not odor, differences between the two stimuli. A fourth experiment investigated behavioral effects, demonstrating that stress samples sharpened emotion-perception of ambiguous facial stimuli. Together, these findings suggest human chemosensory signaling of emotional stress, with neurobiological and behavioral effects.					
15. SUBJECT TERMS					
FEAR	PERSPIRATION	ALARM PHEROMONES	SIGNS AND SYMPTOMS		
SWEAT	SWEAT ODORS	RESPONSE(BIOLOGY)	PERCEPTION(PSYCHOLOGY)		
ANXIETY	SWEAT SAMPLES	NEUROPHYSIOLOGY	ACUTE EMOTIONAL STRESS		
CORTISOL	STRESS RESPONSE	STRESS(PHYSIOLOGY)	NEUROBIOLOGICAL RESPONSE		
EMOTIONS	OLFACTORY STIMULI	STRESS(PSYCHOLOGY)			
PEROMONES	STARTLE RESPONSE	PERFORMANCE(HUMAN)			
16. SECURITY CLASSIFICATION OF:			17. LIMITATION OF ABSTRACT	18. NUMBER OF PAGES	19a. NAME OF RESPONSIBLE PERSON
a. REPORT	b. ABSTRACT	c. THIS PAGE			Henry Girolamo
U	U	U	SAR	36	19b. TELEPHONE NUMBER (include area code) 508-233-5483

Table of Contents

List of Figures and Tables	iv
Acknowledgments	v
1 Introduction	1
2 Materials and Methods	3
2.1 <i>Methods for Generating Sweat Samples</i>	3
2.2 <i>Validation of Sample Collection Methods</i>	4
2.2.1 Analysis of Sweat Extracts by Gas Chromatography Mass Spectroscopy (GCMS).....	4
2.2.2 Release of Semi-Volatile Components from Aqueous Solutions.....	7
2.3 <i>Methods for Presenting Sweat Samples</i>	8
2.4 <i>Validation of Trial-Specific Respiratory Parameters</i>	9
2.5 <i>General Inclusion/Exclusion Criteria for Detector Participants</i>	9
2.6 <i>Methods for fMRI Experiments</i>	10
2.6.1 Original fMRI Experiment.....	10
2.6.2 Replication fMRI Experiment.....	11
2.7 <i>Methods for Odor-Perception Experiments</i>	12
2.7.1 Assessment of Odor Intensity and Valence	12
2.7.2 Forced Choice Odor-Discrimination Task.....	12
2.8 <i>Methods for Behavioral Experiment</i>	13
3 Results	16
3.1 <i>fMRI Experiments</i>	16
3.2 <i>Odor Perception Experiments</i>	18
3.3 <i>Threat-Perception Experiment</i>	19
4 Discussion	21
5 References	24

List of Figures and Tables

Figure 1. Synchronized breathing graphic and model for breathing cycle 2
Figure 2. Total ion count GC trace of aqueous human sweat extract 5
Figure 3. Mass spectrum of retention time 19.512 minutes..... 6
Figure 4. Mass spectrum of retention time 20.655 minutes..... 7
Figure 5. Trial design..... 14
Figure 6. Activation of the amygdala from breathing stress-derived sweat 16
Figure 7. Full-brain activation maps for replication fMRI study..... 17
Figure 8. Likert Scales showing both conditions rated as mild and neutral. 19
Figure 9. Sharpened discrimination between threat and non-threat while breathing
stress-derived sweat. 20

Table 1. Analysis of STRESS-EXERCISE sweat for replication fMRI study..... 18

Acknowledgements

The authors wish to acknowledge the following individuals for their assistance with the experiments presented in this manuscript: U.S. Army Natick Soldier Systems Center, in particular Mr. Fred J. Dupont (logistics and support), 1st Battalion, 507th Parachute Infantry Regiment (data collection and logistics), Igor Vostiar (analytical chemistry), Eric Zarahn (fMRI), Bosky Ravindranath (fMRI), Greg Hajcak (behavioral experiment), Bruce Brownawell (analytical chemistry), Mark Wagshul (fMRI), Tsafirir Greenberg (fMRI), Ray Maynard (sample collection), and the tandem-masters of Skydive Long Island (sample collection).

This page intentionally left blank

AN FMRI STUDY OF OLFACTORY CUES TO PERCEPTION OF CONSPECIFIC STRESS

1 Introduction

Alarm substances are airborne chemical signals, released by an individual into the environment, which communicate emotional stress between conspecifics. The existence of alarm substances in communicating emotional stress via chemosensory cues is well-established in mammals [1], with animals exposed to odors secreted by acutely stressed conspecifics expressing neurobiological and behavioral changes consistent with increased arousal and threat-assessment [2-4]. In recent years, a significant body of research has explored the role of human chemosensory signals for reproductive function, an area that is controversial [5], but appears to provide some evidence for influence on humans in some of the same contexts in which they exist for non-human mammals [6-18]. This conservation across species is biologically suggestive, and predicts that human chemosensory signals for emotional stress may also exist and assume functional importance.

To date, six studies worldwide have published reports on human stress signaling via sweat. Two studies [19,20] found that individuals were able to identify, solely by smelling sweat collected on axillary pads, whether the sweat donor had been watching a frightening versus benign film. Using a similar collection paradigm with frightening and benign films, one study [21] found that when the participants smelled stress sweat (but not neutral sweat), they showed improved accuracy in completing a word-association task, while another [22] found that stress sweat caused participants to interpret ambiguous expressions as more fearful. Two studies collected sweat from individuals preparing to take a difficult examination with exercise sweat as the control. In one study [23], females exposed to the stress odor were less likely to judge a face as positive when primed with a positive face, while in the other [24], auditory stimuli provoked an increased startle response when participants breathed sweat collected during the stress condition.

The goal of this study, performed under contract to the U.S. Army Natick Soldier Research, Development and Engineering Center (NSRDEC) between September 2006 and May 2008, was to determine whether breathing the sweat of people who were emotionally stressed produced, in a group of unrelated individuals, neurobiological evidence of emotion-perception. The primary area associated with emotion-processing is the amygdala [25,26], which has been reliably activated in human neuroimaging studies of emotion [27] as well as in animal studies using rat alarm substances [3].

To obtain human sweat stimuli, axillary samples were obtained from 144 individuals participating in a stress condition (first-time tandem skydive) and a control condition (running on a treadmill for the same duration of time at the same time of day). Sweat

donors jumped from 4km (13,000 ft), with one full minute of free-fall at a vertical speed of 193km/hr and four minutes under the parachute. Because the tandem-master controlled the descent, the skydiving condition produced a predominantly emotional but not physical stressor for the sweat donors, while the exercise condition produced a predominantly physical but not emotional stressor. Significant increases in both participant cortisol-levels (repeated-measures, analysis of variance (ANOVA), *pre-post Stress vs. Exercise*: $F=39.87$, $p=0.000$, $N=40$) and state-anxiety (paired t-test: $t=10.02$, $p=0.000$, $N=40$) confirmed that the paradigm was successful at inducing emotional stress. The sweat collection and storage protocols were designed to prevent bacterial growth, which gives otherwise odorless sweat its characteristic aversive odor.

Axillary samples, once extracted and pooled for each condition, were then used as stimuli for four experiments. Two fMRI experiments assessed amygdala activation, as well as possible gender interactions that could indicate confounds due to reproductive chemosignals, which have been shown to be sex-specific [13]. The amygdala is not only associated with emotion, but also plays a key role in olfactory processing [28]. To confirm that test and control conditions differed only with respect to emotion, and not perceivable odor, a double-blind forced-choice discrimination task was used, as well as Likert scales, to verify that participants were unable to detect intensity, valence, or qualitative differences in odor between the stress and exercise sweat. Finally, the behavioral implications of the amygdala activation were tested, to investigate how stress sweat affects threat-perception using psychometric curves generated by participants' responses to morphed neutral-to-threatening faces.

Participants for all experiments were screened for anosmia prior to testing. For the fMRI and behavioral experiments, presentation of sweat extracts was controlled with synchronized nasal inhalation (Figure 1); for the odor discrimination experiments, individuals were asked to sniff the sample.

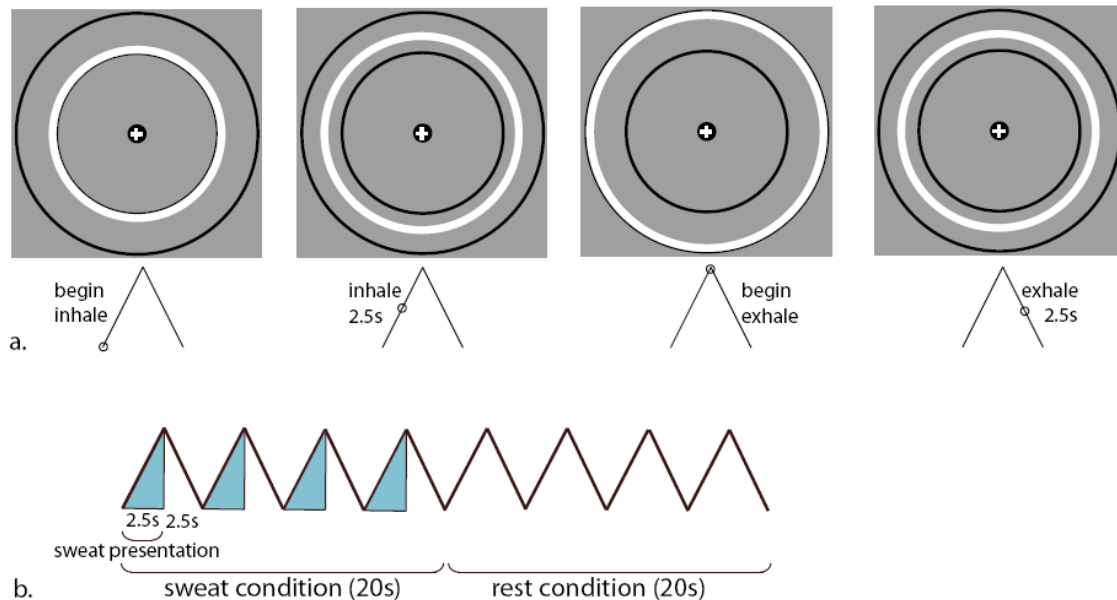


Figure 1. Synchronized breathing graphic and model for breathing cycle.

2 Materials and Methods

All experiments reported in this manuscript were approved by the Institutional Review Board of Stony Brook University. In addition, the replication fMRI experiment was approved by the Institutional Review Board of McLean Hospital; all participants provided written informed consent.

2.1 Methods for Generating Sweat Samples

One hundred and forty-four participants (“Donors”) were recruited, each of whom had previously contacted Skydive Long Island (Calverton, NY) to schedule his or her first-time tandem skydive. All participants were between the ages of 18-50 ($\mu=25$; $s.d.=6$), had a Body Mass Index < 25 , were free of cardiac illness, and had not skydived before. Participants wore a digital altimeter (Altimeter Neptune), showing a consistent rise-time of 15 minutes, jump at 13,000 ft, freefall lasting 60 seconds, and parachuting for an additional 4 minutes before landing; this resulted in a stress condition of a total of 20 minutes (5 minute fall plus 15 minutes of anticipatory anxiety preceding the jump). Salivary cortisol samples were obtained from 40 of the participants using the passive drool method [55] immediately prior to take-off (15 minutes prior to the jump) and again following landing. Cortisol measurements were taken between 1-7 PM to minimize diurnal variability and assayed using Salimetrics Salivary Cortisol Kits (Salimetrics, State College, PA). Self-reports of skydiver state anxiety were obtained using the Spielberger State Anxiety Inventory (Mind Garden Inc., Menlo Park, CA) 15 minutes prior to the jump, as well as 15 minutes prior to the exercise.

The control exercise was conducted on a separate day from the original jump, but within 2 hours of the time of day of the original jump. During the control condition, each sweat donor was instructed to run on a treadmill at his or her maximum comfortable rate for 20 minutes. Participants were allowed to control their own levels of exertion to ensure production of sweat without inducing emotional distress. Salivary samples were obtained immediately prior to start and immediately following the end of the exercise, and were collected and assayed identically to those collected during the stress condition.

For the skydiving condition, only tandem jumps were chosen. This meant that the tandem-master took over all physical aspects of the jump, including stabilization and steering, to ensure that physiological measures obtained during skydive condition reflected predominantly emotional, and not physical, stress. The donor participants reported a significant increase in state anxiety (paired t-test: $t=10.02$, $p=0.000$) between the stress (73rd percentile rank for males 19-39; $\mu=42$, $s.d.=11$) and exercise (25th percentile rank for males 19-29; $\mu=28$, $s.d.=8$) conditions. Mean cortisol values for the stress condition were PRE=0.229 $\mu\text{G/dL}$ ($s.d.=0.148$) and POST=0.584 $\mu\text{G/dL}$ ($s.d.=0.310$), and showed a significant increase (paired t-test: $t=7.15$, $p=0.000$). Mean cortisol values for the exercise condition were PRE=0.170 $\mu\text{G/dL}$ ($s.d.=0.165$) and POST=0.207 $\mu\text{G/dL}$ ($s.d.=0.175$); no significant increase was observed (paired t-test: $t=1.40$, $p=0.17$). A repeated-measures ANOVA was additionally performed, comparing

PRE v. POST increases between the two conditions. The condition*(PRE, POST) interaction was significant, with the stress condition producing a significantly larger increase (PRE, POST) than the exercise condition ($F=39.87$; $p=0.000$). Thus, using both self-report and physiological measures it was confirmed that skydives were an effective means of inducing a reliable emotional stress response and that exercise functioned as an acceptable control condition.

Sweat sample collection methods were identical for test and control collections. Sweatpads were attached immediately prior to participants' boarding and were removed immediately after landing. The total period of sweat collection, during both skydive and exercise conditions, was 20 minutes. Potential participants were excluded from participation in the study if they had used deodorant/antiperspirant on either day of the sample collection. Participants first had their underarms closely shaved. Prior to application of the sweat pads, the participants' axillary regions were washed with a non-ionic detergent (0.1% Triton X-100), rinsed with ultra-pure water, dried, and finally, washed with isopropanol. Axillary sweat was collected on sterile cleaned (washed 2x in Methanol, 2x in Hexane; both solvents are 99.9% GC², Burdick & Jackson, USA) woven gauze sponges (2x2", Dukal, USA) that were placed on clean thin mylar squares and taped in the underarm with waterproof adhesive tape (2", HYTAPE, USA). Solvents were fully evaporated prior to sweatpad construction. After the collection of the sweat was completed, the sweat pad was removed and immediately frozen in tightly sealed Teflon-lined and pre-cleaned borosilicate vials (20ml, VWR Traceclean, VWR, USA) at -20°C until the sweat extraction.

To extract the liquid sweat from the sweatpad, salivette tubes were used (Sarstedt, Newton, NC), substituting the sweatpad for the salivette's absorbant insert. Next, double-distilled water was added so that the tube insert was completely filled with both water and the pad. The salivette tubes were placed into an ultrasound bath for 5 minutes and centrifuged to separate the aqueous sample from the cotton pad. The samples were separated into two batches of 20 participants each; each batch was pooled and diluted to produce sufficient sample for 8 fMRI experiments. After removal from the sweatpad, the sweat samples were frozen at -20 °C in 18ml batches (one per experiment) to avoid multiple thaws. Three hours prior to each fMRI experiment, the samples were thawed at room temperature.

2.2 Validation of Sample Collection Methods

Given that the majority of the compounds detectable in human sweat are hydrophobic [56,57] but the method used water to both remove the sweat and act as a medium to present the sweat molecules to the participants. Gas chromatography mass spectroscopy (GCMS) was performed. Calculations using Henry's law were also performed to ensure that the collection, extraction, and delivery methods were, in fact, capable of presenting sweat molecules of interest.

2.2.1 Analysis of Sweat Extracts by Gas Chromatography Mass Spectroscopy

GCMS was performed using a VG Quattro triple quadrupole mass spectrometer with EI source and an HP5970 gas chromatograph. The samples were taken from males

participating in the exercise condition, and were first prepared as for the fMRI experiments (extraction into water). Hexane (1:20th of GC purity containing 0.3 ng/ml chrysene-d12 for normalization) was added to partition volatile and semi-volatile molecules into the organic phase. Using a syringe, 350µl of hexane was recovered. It was then blown down with nitrogen to 35µl, and a few µl were injected into the GCMS. A 25m DB5 column for GC was used. The protocol for GC was as follows: 1) the temperature was kept at 70 °C for 5 minutes; 2) the temperature was increased to 300 °C, ramping by 10 °C/min; and 3) the temperature was kept at 300 °C for 10 minutes.

A typical total ion count GC trace of the samples is shown in Figure 2. Cholesterol comes off the column at 32.07 minutes, and chrysene-d12 comes off at 26.15 minutes. The GC scan alone demonstrates that the sweat preparation method yielded quite a few hydrophobic molecules, including cholesterol.

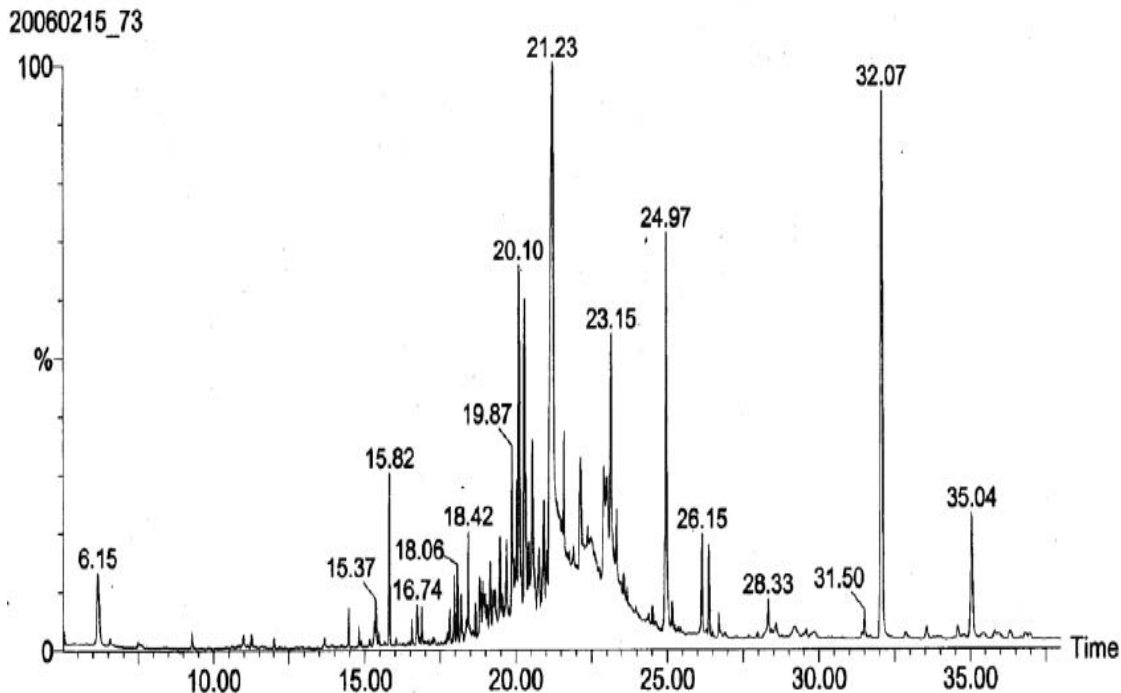


Figure 2. Total ion count GC trace of aqueous human sweat extract.

In Figures 3 and 4, two individual MS scans that focus on molecular ranges around 270 are shown. Since some of the odorous steroids (e.g., androst-2-en-17-one MW 272.47, androsta-4,16, dien-3-one MW 270, and androstenone MW 272.42) are in this range, GC peaks that show m/z 270 and 272 were selected. Comparing the mass spectra below to spectra of pure steroid compounds it is apparent that there are clearly androgen steroids in the samples as judged from the distribution of 270, 255 and 237 fragments and 272, 257, and 229 fragments [58]. The potential candidates for these spectra are androstadienones (MW 272) and androstenones (MW 270), which are of the class of compounds associated with putative human reproductive pheromones found in apocrine sweat.

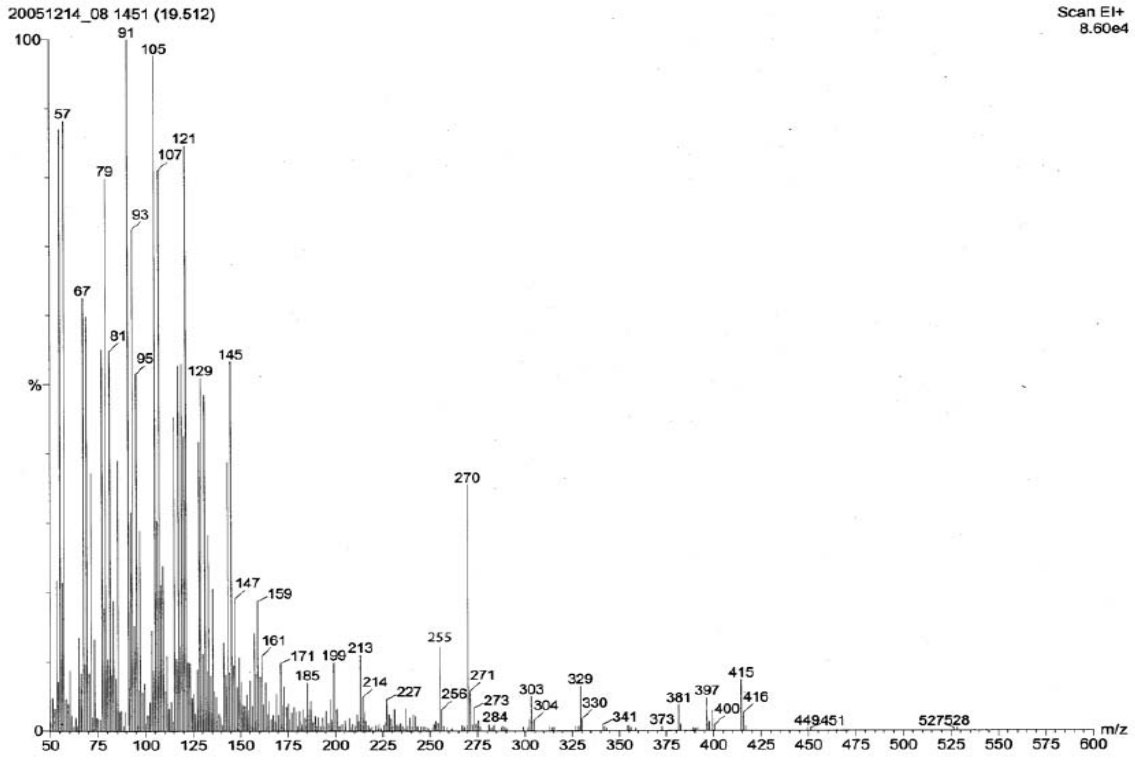
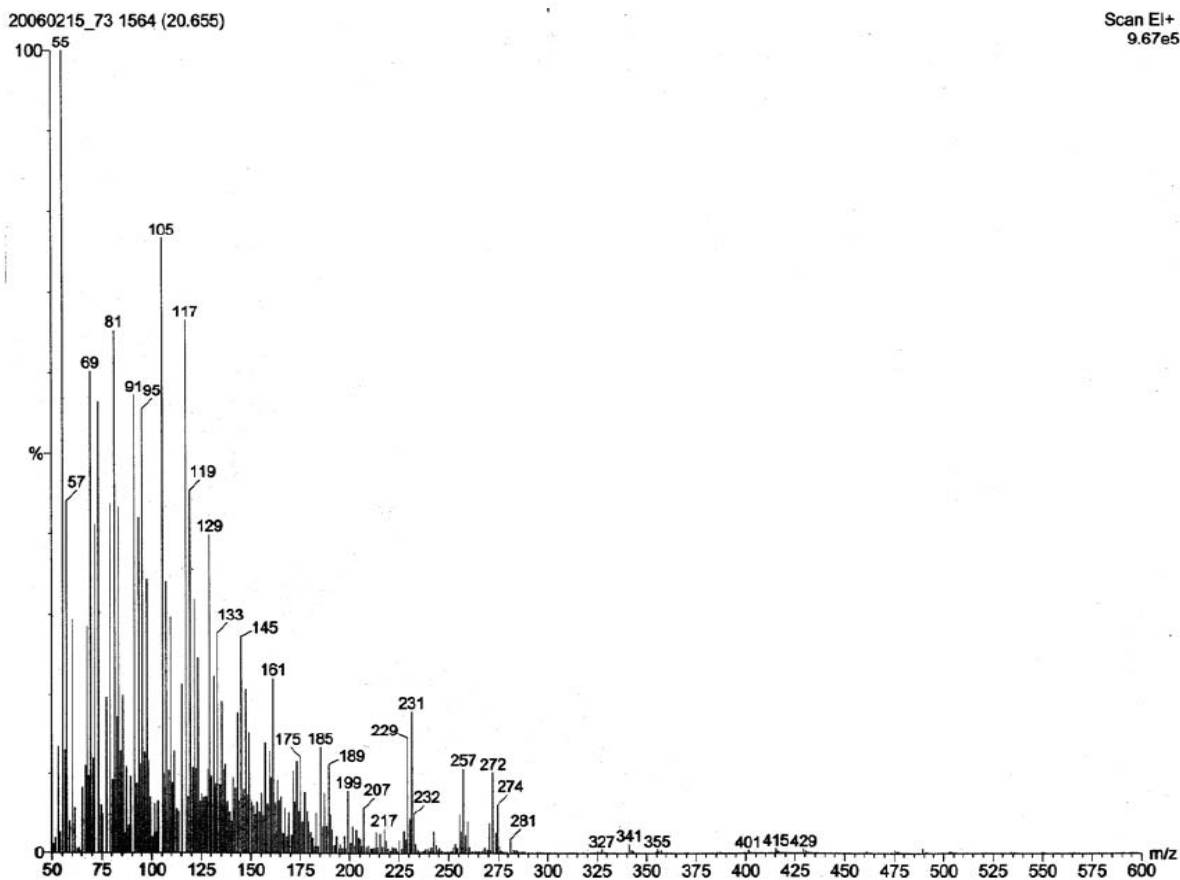


Figure 3. Mass spectrum of retention time 19.512 minutes.



2.2.2 Release of Semi-Volatile Components from Aqueous Solutions

Many research olfactometers deliver odors by bubbling air through a liquid containing the fragrance molecules. In this study particular attention was paid to optimizing the delivery of semi-volatile molecules because it was expected that a putative stress pheromone will be a steroid derivative (such as androsta-4,16-dien-3-one). The physical chemistry of vaporization of solutes in a typical olfactometer is straightforward. While the bubbles travel through the solution the solutes partition into the air and are carried away [59]. The degree to which they partition is given by Henry's law:

$$H = \frac{P_{air}}{C_{aqueous}} \quad (1),$$

where p_{air} is the partial pressure of the solute in air, $c_{aqueous}$ is the concentration of the solute in water, and H is the Henry's law constant. The concentration of a solute with Henry's constant H in a nebulizer will vary in time in the following way [59]:

$$c(t) = c_0 e^{-\frac{H G}{RT V}} \quad (2),$$

where c_0 is the initial concentration, G is the air flow rate, and V is volume of the solution (in this case $G=3$ l/min and $V=6$ ml). Henry's law constants are usually estimated using the boiling point of a substance and its aqueous solubility [60]. For androstenone

(C₁₉H₂₈O) an aqueous solubility of 0.23mg/l and an air/water partition coefficient of 0.012 is reported [61]. From that, an exponential decay time for androstenone in the nebulizer setup of about 10 seconds can be estimated. For more realistic odorous steroids with higher solubility (androst-2-en-17-one cS=2.3mg/l, androsta-4,16,dien-3-one cS=2.9mg/l [62]) the release properties of the setup (assuming that the partial vapor pressure stays constant) the exponential decay time becomes about 100 seconds. For the nebulizer parameters, assuming a decay time of 100 seconds, about 40% of the semi-volatile solute was delivered over the time of the experiment (50 seconds of air flow through the nebulizer).

The GCMS analysis of the sweat preparation and an estimation of Henry's law constants for candidate compounds for a stress pheromone demonstrate that the sweat collection, aqueous extraction, and delivery methods are capable of sampling over hydrophobic pheromone-type compounds in human apocrine sweat. In general, for an efficient delivery one needs to consider all parameters in eq.2. The Henry's law constant for a particular solute can be adjusted by the choice of solvent. To deliver a hydrophobic molecule, the Henry's law constant is highest the more water-like the solvent is. Other parameters that can be adjusted are flow rate and the total volume. If one has fragrance molecules in abundance, the best strategy is to have a long exponential decay time which results in a nearly constant rate delivery. In this case, since both the chemical nature of the molecules and their concentration were unknown variables, the most efficient delivery though an aqueous solution was chosen.

2.3 Methods for Presenting Sweat Samples

For all experiments described here, the STRESS (test) and EXERCISE (control) conditions were obtained from pooled sweat obtained from the Donor stress and exercise conditions (described above), respectively. The AIR condition was room air, which was presented via the olfactometer as an additional control condition. For both fMRI and behavioral experiments, all olfactory stimuli were presented via an MRI compatible olfactometer designed for this experiment. The airflow control system was located outside the testing room and was based upon a Lorig-design olfactometer [63], ensuring that switching between six samples could be achieved without change in flow velocity to the nostrils (≈ 2.5 L/min). Five sample lines and one constant air-flow line were fed into the testing room and were connected to the nebulizer box close to the head of the participant. The stimulus delivery was achieved through nebulizing the aqueous sweat samples in commercially available nebulizers close to the head of the participant. When pressurized, the nebulizer creates a fine mist that rapidly releases semi-volatile components from the aqueous solution into the air. One-way valves were inserted between the nebulizers and the air-mixing manifold to ensure that there was no odor leakage from a nebulizer before it was pressurized. After mixing of the constant air-flow line (0.5 L/min) with air from one of the nebulizers in the manifold, the air was delivered through a nasal cannula to the participant.

For both fMRI and behavioral studies, breathing cues synchronized to the delivery of the olfactometer were employed. The breathing cues were continuous throughout the experiment and did not indicate the presence or absence of a condition, nor did they

distinguish between conditions. In order to not alert participants that a condition was being presented and since all stimuli were delivered via a nasal cannula, participants were instructed and trained to breathe on cue and only through their noses for the entire duration of the experiment.

For both fMRI studies, the cue was visual and presented on a projected video screen within the scanner. This consisted of an expanding and contracting ring (Figure 1a), which cued inhalation and exhalation, respectively. For the duration of the entire experiments, breathing was paced to a 5 second cycle: 2.5 seconds inhalation and 2.5 seconds exhalation, synchronized to the TR of the scan (Figure 1b). In order to verify that participants were, in fact, capable of complying with the breathing cues for the duration of the experiment, for the first fMRI experiment breathing in real time was monitored throughout the scan with an MR-compatible respiration belt (Philips Medical Systems, N.A., Bothell, WA). Respiration data were acquired at 500Hz and noise was removed from the data using a 5th order low-pass elliptic filter with a 2Hz cutoff. Filtered data were then passed through a peak detection algorithm, in order to calculate breathing rate and depth for each run. Because the breathing cues that were used for the fMRI experiments were visual, and therefore might have distracted from the visual task, for the behavioral experiment, auditory breathing cues were used instead to synchronize inhalation with the olfactometer. Continuously increasing and decreasing pitch, combined with a subtle rhythmic element that conveyed time, signaled inhalation and exhalation respectively. Respiratory compliance was monitored remotely throughout the experiment (Biopac Systems, Goleta CA).

2.4 Validation of Trial-Specific Respiratory Parameters

Respiratory data from participants tested in the first fMRI study were collected and analyzed in order to confirm compliance to inhalation synchronization. Each of the 16 participants had 6 runs, for a total of 96 runs. This data shows that 91.7% of all runs had 100% compliance to the breathing pattern, 4.2% had 95-99% compliance, 2.1% had 90-94% compliance, and 2.1% had 85-89% compliance. No run had less than 85% compliance. Performing paired t-tests between test and control conditions, there were no differences in respiratory compliance for either rate (stress-exercise: $t=-1.03$, $p=0.32$) or depth (stress-exercise: $t=-0.81$, $p=0.43$).

2.5 General Inclusion/Exclusion Criteria for Detector Participants

The aim of the experiments was to investigate the effect of STRESS vs. EXERCISE sweat on unrelated individuals (“Detectors”). There was no overlap for the 144 Donor and 46 Detector participants, nor was there overlap, for either Donors or Detectors, between either of the fMRI experiments and the behavioral experiment. All potential Detector participants for the fMRI, odor perception, and behavioral studies were screened for total or partial anosmia and nasal congestion using the University of Pennsylvania Smell Identification Test (Psychological Assessment Resources, Lutz, FL). Due to the possible interactions between hormonal changes and olfaction [64-67], female participants were excluded if they were pregnant or lactating and were not tested during menstruation; additionally, the Smell Identification Test was administered prior to the scan because of hormonal variability during the menstrual cycle.

2.6 Methods for fMRI Experiments

2.6.1 Original fMRI Experiment

Olfactory stimuli were obtained from 40 male Donors. Detector participants were 16 males and females (50% female). Detector participants were between the ages of 18 and 27 ($\mu=22$, $s.d.=3$), and were excluded if they had a history of mental illness or substance abuse [68], neurological illness, claustrophobia, or metal in the body.

Six runs of 104 repetitions (4:20) were performed. In each run, there were six conditions presented (STRESS, EXERCISE, and AIR); each condition was presented once during continuously synchronized closed-mouth nasal breathing and once when the participant was instructed to sniff. Analyses showed that the breathing and sniffing conditions generated very distinct time-series, with sniffing producing quickly decaying time-courses more typical of olfactory processing [69-71] and breathing producing longer time-courses more similar to the standard 15-20s hemodynamic response function associated with non-olfactory stimuli. The two conditions could not be analyzed together, since the breathing conditions required analyses with a standard HRF while the sniffing conditions required analyses with a short (5s) olfactory HRF [69]. Like the breathing condition, the sniffing condition also significantly activated the amygdala (left amygdala SVC: $T/Z=3.45/2.92$, $p_{\text{uncorr}}=0.002$, $p_{\text{corr}}=0.08$; ROI superficial left amygdala $T/Z=2.27/2.07$, $p=0.02$, ROI whole left amygdala $T/Z=2.10/1.93$, $p=0.03$; right amygdala SVC: $T/Z=4.87/3.71$, $p_{\text{uncorr}}=0.000$, $p_{\text{corr}}=0.03$; ROI superficial right amygdala $T/Z=0.81/1.35$, $p=0.22$; ROI whole right amygdala $T/Z=1.41/0.79$, $p=0.09$). Since the focus of this paper is the breathing conditions and their time-courses are more clearly similar to those produced by emotional, rather than olfactory, stimuli, a separate article will address the sniffing conditions. Each odor period lasted 20 seconds (4 TR), with a 20 second gap between odor presentations (REST). The orders of the six conditions were pseudo-randomized in each of the six runs. Besides the visual inhalation cues and three odor conditions (stress sweat, exercise sweat, and air), no other stimuli were presented to participants during the scans.

Participants were told that they might or might not smell odors throughout the experiment. They had only one task; this was to follow the breathing cues, which were continuous throughout the experiment.

Data were acquired using a Philips 3T Achieva whole body scanner (Philips Medical Systems, N.A., Bothell, WA) with an eight-channel SENSE™ head coil. After an initial localizer scan, a high resolution T1-weighted MPRAGE3D anatomical image (TR/TE=8.0/4.3ms, flip angle=18°, FOV=250x250x150mm, 256x256x168 matrix) was acquired for anatomical registration. All fMRI data were collected as follows: single shot gradient echo EPI, TR/TE=2500/22ms, 96x96 matrix, 224x224 mm FOV, 36 interleaved transverse slices (aligned to the AC-PC line) 3.5mm thick with no gap, 1 average, flip angle=83°. Iterative optimization of all acquisition parameters prior to the experiment ensured that the mean intensity for signal to noise was adequate over the region of interest, the amygdala (left amygdala: 179.4; right amygdala: 175.0).

All image pre-processing for the analyses was implemented using the SPM5 program (Wellcome Department of Cognitive Neurology). For each participant's GE-EPI dataset:

- 1) Data were temporally shifted to correct for the order of slice acquisition, using the first slice acquired in the TR as the reference.
- 2) All GE-EPI images were realigned to each other.
- 3) The T1-weighted (structural) image was co-registered to the first EPI volume using a mutual information co-registration algorithm.
- 4) The co-registered high-resolution image was used to determine parameters (7 X 8 X 7 non-linear basis functions) for transformation into a Talairach standard space defined by the Montreal Neurologic Institute template brain supplied with SPM5.
- 5) This transformation was applied to the GE-EPI data, which were re-sliced to 2 mm X 2 mm X 2 mm using 7th degree polynomial approximation to sinc-interpolation.
- 6) The spatially normalized GE-EPI data were spatially smoothed with an isotropic Gaussian kernel (full-width-at-half-maximum=6 mm).

The fMRI data analysis comprised two levels of voxel-wise General Linear Models (GLMs). The first-level GLM is a participant-separable time series analysis that yields summary measures to be used in the second-level GLM, which affords statistical inference at the population level. In the first-level GLM, conditions were modeled with predictors comprising 20-second duration boxcars convolved with the default hemodynamic response function (HRF) of SPM5. A 0.2 Hz signal (to model the breathing frequency), motion parameters, and their squares were included in the model as nuisance covariates. Linear combinations of the estimated coefficients of these predictors (i.e., contrasts) of interest were then computed per voxel per participant. These contrasts were: (1) STRESS-EXERCISE; (2) STRESS-AIR; and (3) EXERCISE-AIR. The first-level contrast images were used as the dependent variables into second-level GLMs. For each contrast, a second-level statistical parametric mapping (SPM) test was performed that was hypothesis-driven and therefore restricted to the amygdala bilaterally. The threshold for this test was obtained by using Gaussian random field small volume correction (SVC), as implemented in SPM5, with the search volumes defined by using the publicly available region of interest library, the Anatomical Toolbox [72] for the amygdala, and its sub-divisions.

2.6.2 Replication fMRI Experiment

Olfactory stimuli were obtained from 40 Donors (50% female). Detector participants were between the ages of 18 and 50 ($\mu=26$, $s.d.=3$), and were excluded if they had a history of mental illness or substance abuse [68], neurological illness, claustrophobia, or metal in the body.

Based upon the results from the previous fMRI experiment, participants breathed continuously throughout this experiment, with no sniffing conditions; this significantly increased statistical power by effectively doubling the number of trials that could be obtained from the same amount of sweat. Four runs of 144 repetitions (6:00) were performed. In each run, there were three conditions presented (STRESS, EXERCISE, and AIR). STRESS and EXERCISE were each presented four times; air was presented between each of the conditions (REST), as well as once at the end of each run as a separate condition (AIR). To determine whether there were gender effects, either for donor sex, detector sex, or donor*detector sex, male donor stress sweat was used in half of the STRESS conditions, and female donor stress sweat was used in the other half, with runs counter-balanced for order between participants. Each odor period lasted 20 seconds (4 TR) with a 20 second gap between odor presentations (REST), identical to the AIR condition. Besides the visual inhalation cues and three odor conditions (stress sweat, exercise sweat, and air), no other stimuli were presented to participants during the scans.

Data were acquired using a Siemens 3T Trio whole body scanner (Siemens Medical Systems, Malvern, PA) with a circularly polarized T/R head coil. After an initial localizer scan, a high resolution (T1 weighted MPRAGE3D), resolution (RL, AP, SI) of 1.33x1x1 mm (TI=1100, TR/TE=2100/2.74, $\alpha=120$, FOV=170x256x256 mm, 128x256x256 pixels, total imaging time 8:59) was acquired for anatomical registration. All fMRI data were collected as follows: single shot gradient echo EPI, TR/TE=2500/30ms, 64x64 matrix, 224x224 mm FOV, 26 interleaved transverse slices (aligned to the AC-PC line) 3.5mm thick with no gap, 1 average, flip angle=83°.

The fMRI data were pre-processed and statistically analyzed as described in the original experiment.

2.7 Methods for Odor-Perception Experiments

2.7.1 Assessment of Odor Intensity and Valence

Olfactory stimuli were obtained from the 80 Donors (25% female) who provided samples for the two fMRI experiments. Detector participants were the last 10 participants who participated in the first fMRI experiment, as well as the 16 participants who participated in the second fMRI experiment (N=26, 50% female). Immediately following the fMRI acquisition, structured assessments of odor perception were performed; both participants and researchers were blind to vial contents, and conditions were presented randomly. Participants were provided the vials one at a time and asked to rate them individually for strength and pleasantness on Likert scales between 0 (no detectable odor/extremely pleasant) and 10 (extremely strong odor/extremely unpleasant). Scores for all three stress-sweat vials and all three exercise-sweat vials were averaged for the statistical analyses, which used non-parametric Wilcoxon Sign-Ranks tests.

2.7.2 Forced Choice Odor-Discrimination Task

Olfactory stimuli were obtained from the 64 Donors (50% female) who provided samples for the behavioral study. Detector participants were 14 individuals who participated in

the behavioral experiment, as well as an additional two individuals (N=16, 50% female; $\mu_{\text{age}}=24$, s.d.=5). Each participant received 16 discrimination trials in a same-different paradigm, with 8 different-odor pairs and 8 same-odor pairs presented in random order. The odorants were fragrance paper strips dipped for three seconds in either stress sweat or exercise sweat. The participants were told that they would be presented with two substances for each trial, and were instructed to indicate whether the odorants smelled “the same or different.” The paired odorants in each trial were presented in quick succession within an interval of a few seconds. A minimum of 10 seconds was allowed between trials. Participants were allowed to sniff only once for each presentation and were then required to respond either "same" or "different", or to guess if unsure. No feedback was given as to the correctness of the response; the odor assessment was performed with both participant and researcher blind to condition. Accuracy scores were computed for each participant and statistically compared to chance (50%) using a one-sample t-test.

2.8 Methods for Behavioral Experiment

Olfactory stimuli were obtained from 64 Donors (50% female). Detector participants were 14 individuals (5 female; $\mu_{\text{age}}=23$, SD=5) with no history of mental illness, substance abuse [68], or neurological illness. All visual stimuli were obtained from the Pictures of Facial Affect (Paul Ekman Inc., Oakland CA). Using commercially available software (MorphMan 3.0, STOIK Imaging, Moscow Russia), nine levels of morph (10%-90%) were produced, equally distributed between the Neutral (0%) and Angry (100%) poles. Pilot testing prior to the experiment (N=8, 50% female) established reliability curves for all faces in the set; from these three faces were selected (EM, JJ, PE; all male) that, without olfactory stimuli, most reliably produced classically-psychometric responses along morph levels. All visual stimuli were presented on a 42-inch plasma screen situated 6 feet from the participant, in an otherwise dark and silent audiometric chamber. As illustrated by Figure 5, each trial consisted of 500ms of rest, 2500ms of inhalation, a brief stimulus-on period (200ms), 500ms of rest, and 2500ms of exhalation (total of 5700ms per trial). Pilot studies with 4,16-androstadien-3-one, oestra-1,3,5(10),16-tetraen-3-ol, as well as common odorants, were conducted prior to the experiment in order to optimize experimental parameters; these were set at 14 trials per 9 morph levels, with morph levels and faces chosen randomly for each trial. The 126 trials (14 × 9 morph levels) were presented under two conditions: while breathing stress sweat (STRESS), and while breathing exercise sweat (EXERCISE). The total experiment ran for 28 minutes. To maximize participant compliance and focus throughout the experiment, testing was divided up into four 7-minute runs: two for the STRESS condition and two for the EXERCISE condition with two minutes between runs. STRESS and EXERCISE conditions alternated for each participant, with condition order counter-balanced between participants.

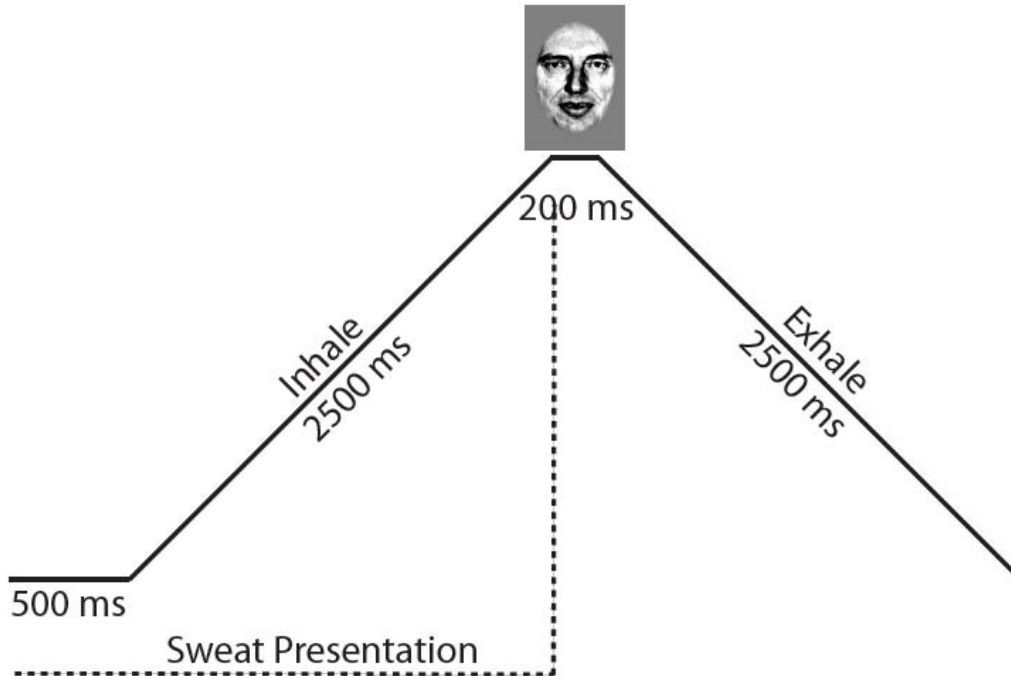


Figure 5. Trial design.

Participants were instructed to indicate, following presentation of the facial stimuli, whether the face was “more neutral” or “more threatening.” Participants used a two-button computer mouse to make their choice, and were asked to do so as quickly as possible without making errors. Limits were set so that responses were not accepted after 2500ms post-presentation; responses provided in fewer than 200ms were excluded.

Each individual participated in 5 minutes of training prior to the experiment. Participants first practiced following the auditory breathing cues alone, using only room air. Participants then practiced only using the mouse to identify the faces as neutral or threatening. For the practice sessions, 0% angry and 100% angry poles were used for the three faces presented in the experiment; this served to perceptually “fix” the endpoints for the psychometric curves for all participants. Finally, after mastering both of these components, participants combined them to practice the behavioral task with the breathing cues, again using only 0% and 100% angry faces and room air.

This experiment was optimized for psychometric curve-fitting, a method often employed to exploit the instability linked to ambiguous stimuli in order to test subtle shifts in perception induced by an external manipulation [73]. For each participant, data for each condition (STRESS, EXERCISE) were fitted with a sigmoid function

$$p(A) = p_0 + \frac{\Delta p}{1 + e^{-\sigma(A-A_0)}} \quad (3),$$

where p_0 and $p_0 + \Delta p$ define upper and lower asymptotes, A_0 was the inflection point, and σ defined slope. The fitting was done using a curve-fitting toolbox packaged with Matlab 7.4.0. (Mathworks, Natick MA). This function provided a natural fit to the data with a

mean R^2 value of 0.98 ± 0.02 , as compared to a simple linear fit with mean R^2 value of 0.89 ± 0.06 . Statistical tests (repeated-measures ANOVA) were then performed on individual inflection points and slopes for each participant to assess changes in perceptual threshold and discrimination, respectively.

3 Results

3.1 fMRI Experiments

In the original experiment, sweat from 40 male donors was presented to 16 participants (50% female) while their brains were scanned using fMRI. In a replication experiment, using different participants and scanners, sweat from an additional 40 donors (50% female) was presented to a different group of 16 participants (50% female) undergoing fMRI, increasing power by doubling the number of stimulus presentations. Because it was hypothesized that perception of emotional stress would modulate activity in a brain area related to emotion, the analyses focused on the amygdala; all values were corrected for multiple-comparisons using SVC. For both experiments, these revealed significant activation of the left amygdala (*1st Exp*: $t=4.80/Z=3.68$, $p_{(svc)}=0.02$ [MNI $x, y, z=-16, -10, -18$], $N=16$; *2nd Exp*: $t=5.21/Z=3.88$, $p_{(svc)}=0.008$, [MNI $x, y, z=-27, -6, -12$], $N=16$; Figure 6) in response to the stress sweat as compared to the exercise sweat.

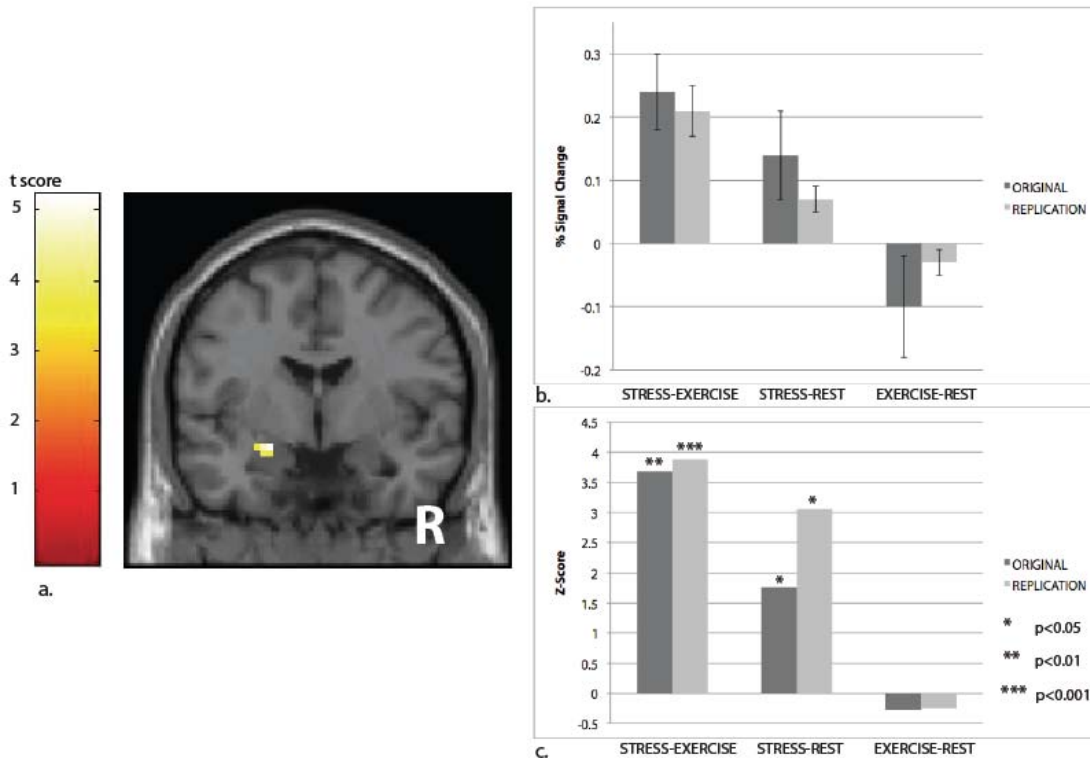


Figure 6. Activation of the amygdala from breathing stress-derived sweat.

For both experiments, activity was concentrated most strongly in the superficial, or corticoid, amygdala (*1st Exp*: $t=4.80/Z=3.68$, $p_{(svc)}=0.008$, $N=16$; *2nd Exp*: $t=5.21/Z=3.88$, $p_{(svc)}=0.008$, $N=16$)—a region known to have substantial olfactory inputs in primates; homologous structures in other mammals have been implicated in pheromonal processing [29]. Activation patterns were equivalent for same-sex and opposite-sex donor-detector pairs (repeated-measures ANOVA: *1st Exp*: $F=1.76$, $p=0.21$, $N=16$; *2nd Exp*: *Donor Sex*: $F=0.21$, $p=0.65$; *Detector Sex*: $F=1.31$, $p=0.27$;

*Donor Sex*Detector Sex: $F=0.004, p=0.952, N=16$*), suggesting that reproductive chemosignals (known to be sex-specific in both animals [30] and humans [13]), were not the likely cause. Whole-brain random-effects analyses for the STRESS-EXERCISE contrast (Figure 7, Table 1) included the amygdala with no significant de-activations.

Full-brain activation maps for replication fMRI study, showing activation levels (STRESS>EXERCISE) in warm colors and de-activations (EXERCISE>STRESS) in cool colors, showed that differences between the two conditions were most pronounced in the amygdala, with no significant de-activations. These images were produced at $p<0.005$, with extent threshold=5 voxels. Table 1 lists all significantly activated clusters corresponding to this analysis.

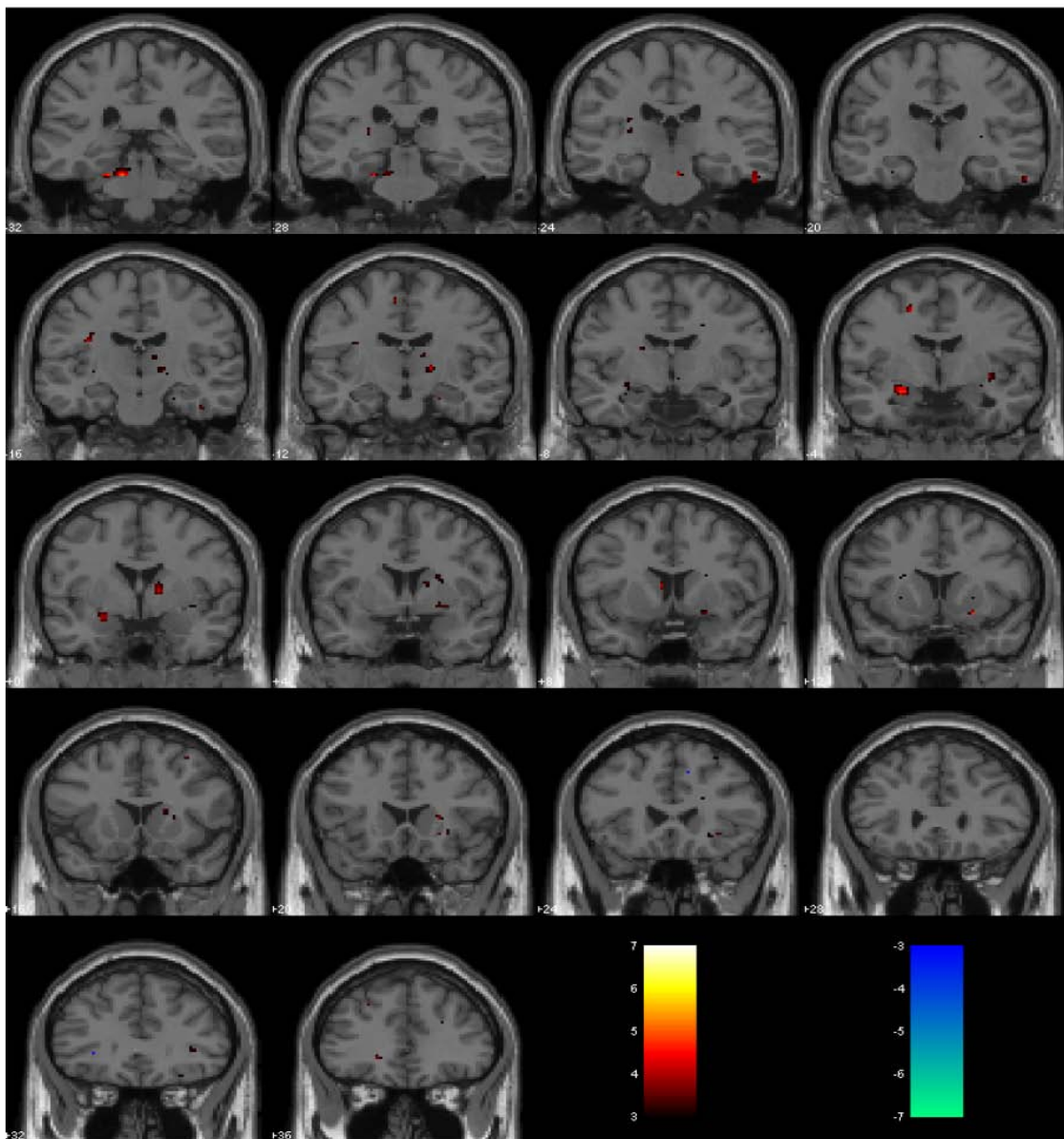


Figure 7. Full-brain activation maps for replication fMRI study.

The results of the exploratory (random-effects) analysis of STRESS-EXERCISE sweat for replication fMRI study are: height threshold $T=3.7$ ($p_{\text{uncorrected}} < 0.001$), extent-threshold=5 voxels. There were no significant de-activations.

Table 1. Analysis of STRESS-EXERCISE sweat for replication fMRI study.

MNI Coordinates (x, y, z)	Region	k	T/ Z Score	p(uncorr)	Associated Functions
-21, 3, -15	Left Amygdala	10	6.19 / 4.30	0.000	<i>Emotion</i>
-9, -33, -24	Left Cerebellum, Anterior Lobe	7	5.70 / 4.10	0.000	<i>Integration of sensory perception and motor control</i>
57, -24, -30	Right Inferior Temporal Gyrus (BA20)	6	4.59 / 3.57	0.000	<i>Visual processing</i>
12, -54, 54	Right Precuneus (BA7)	5	4.53 / 3.54	0.000	<i>Spatial reference system for goal-oriented behavior</i>

3.2 Odor Perception Experiments

While the fMRI experiments indicate that participants' amygdala were able to distinguish between the sweat of stressed and non-stressed colleagues, it was important to establish whether this activation might be attributable to odor differences between the two conditions [31,32]. As shown in Figure 8, subjects rated both odors, using Likert scales ranging from zero ("undetectable"/"pleasant") to ten ("very strong"/"unpleasant"), as equivalently mild (*Stress*: $\mu=2.6$, s.d.=2.3, *Exercise*: $\mu=2.6$, s.d.=2.3; Wilcoxon sign-ranks test: $Z=1.11$, $p=0.28$, $N=26$) and neutral (*Stress*: $\mu=4.5$, s.d.=1.1, *Exercise*: $\mu=4.8$, s.d.=0.8; Wilcoxon sign-ranks test: $Z=1.56$, $p=0.12$, $N=26$).

On Likert Scales, participants rated both conditions as mild and neutral; there were no significant differences between their ratings between conditions. A separate forced-choice discrimination experiment additionally indicated that participants were unable to distinguish between the two odors. Together, these suggest that the amygdala activation seen in response to STRESS, but not EXERCISE, sweat was due to engagement of emotional processing rather than perception of distinct odors.

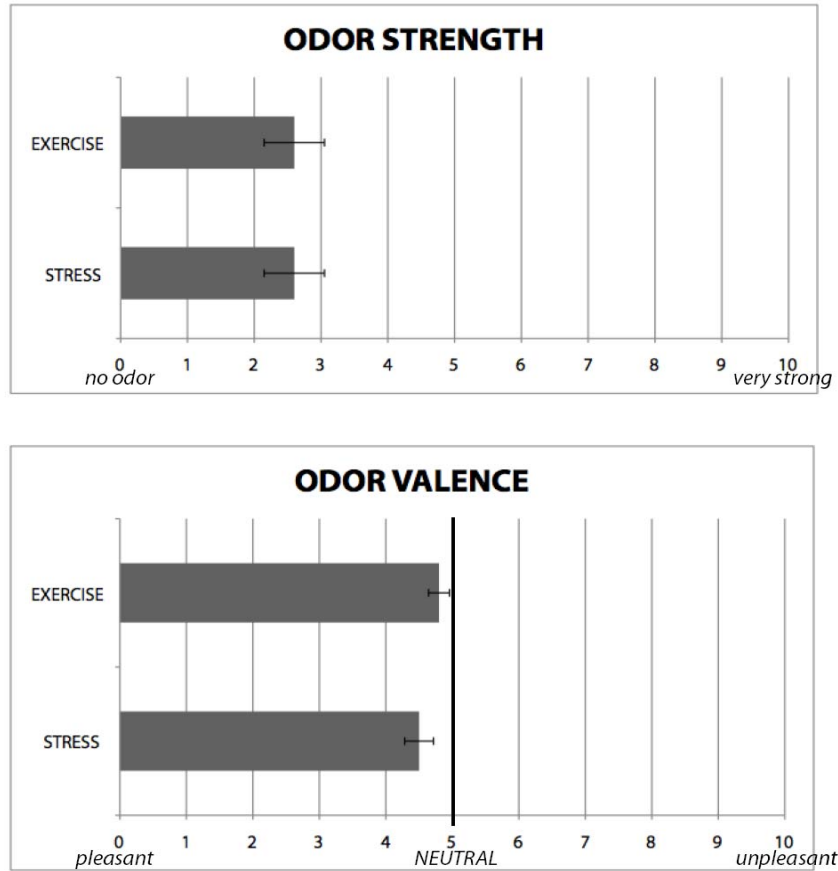


Figure 8. Likert Scales showing both conditions rated as mild and neutral.

To investigate whether the conditions had odors that were qualitatively distinct, a double-blind forced-choice odor discrimination experiment was conducted, in which 16 participants (50% female) identified whether 16 test and control pairs (50% different), randomly presented, were identical or different; participant ratings were not significantly different than chance (one-sample t-test: $t=0.64$, $p=0.53$, $N=16$). The data suggest that participants were not able to consciously distinguish between test and control odors, and therefore simple odor discrimination can be ruled out as an explanation for amygdala activation in response to the STRESS-EXERCISE contrast.

3.3 Threat-Perception Experiment

Since data from the two previous experiments suggest that the observed amygdala activation reflected emotion discrimination rather than odor discrimination, it was then tested whether breathing stress sweat vs. exercise sweat from 64 donors (50% female) behaviorally affected perception of subtle emotional cues in the evaluation of ambiguous faces. Psychometric curves [33] were generated from a forced-choice design in which 14 participants (36% female) indicated via a computer mouse whether briefly-presented (200ms) male faces, morphed between neutral and angry expressions, were “more neutral” or “more threatening.” For each participant, stress and exercise conditions produced psychometric curves, each composed of nine points ranging from neutral (10%) to angry (90%), with each point the average of 14 face presentations. Threat-levels were

presented randomly, with experimental conditions counter-balanced for order. Values for slope, σ , were calculated for each curve using sigmoidal fitting. These showed sharpened discrimination (mean 43% increase) between neutral and angry faces in response to the stress sweat (*Stress*: $\sigma=0.192$, s.d.=0.101; *Exercise*: $\sigma=0.134$, s.d.=0.066; repeated-measures ANOVA: $F=8.30$, $p=0.01$, $N=14$, Figure 9).

For each participant, data for each condition (STRESS, EXERCISE) were fitted with the sigmoid function, where p_0 and $p_0+\Delta p$ define upper and lower asymptotes, A_0 is the inflection point, and σ defines slope. Significant differences between conditions were seen for slope, with individuals under the STRESS condition more closely approximating ideal perceptual discrimination, shown by the dotted line.

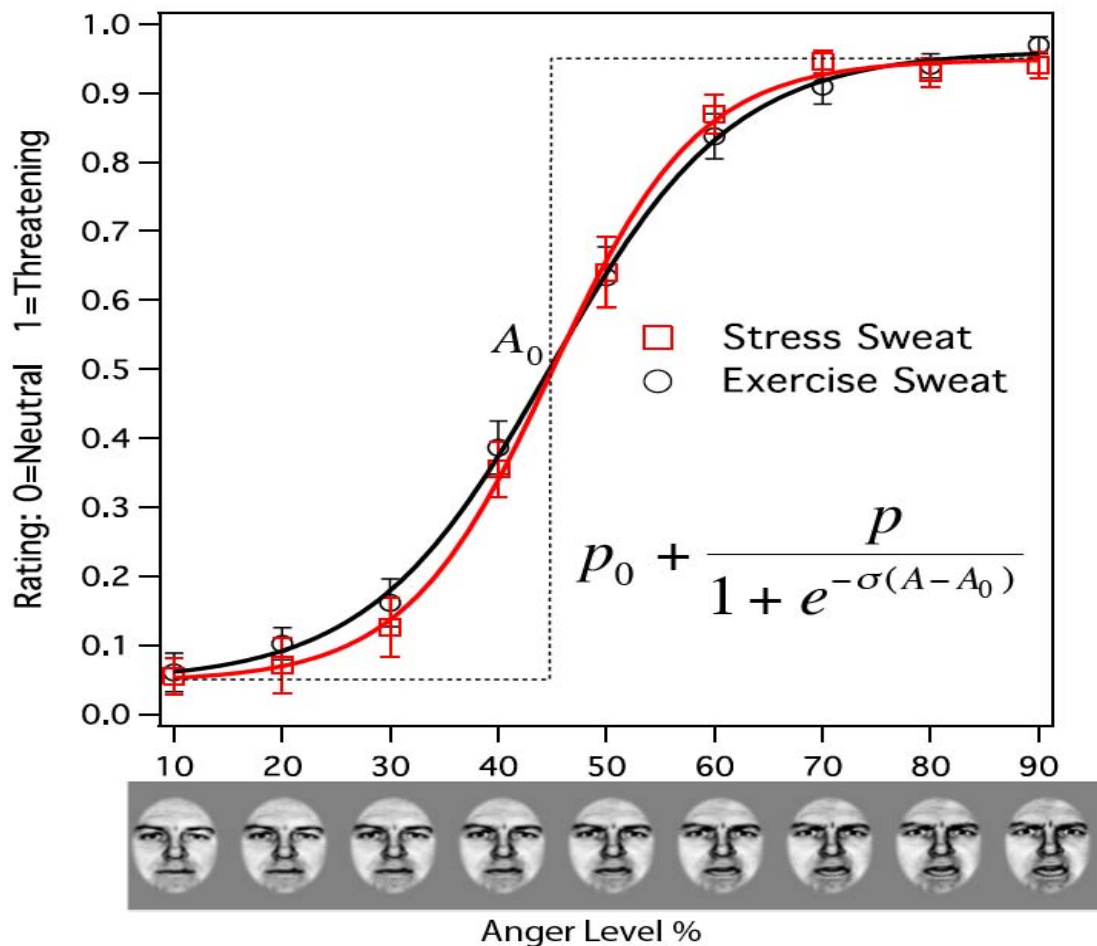


Figure 9. Sharpened discrimination between threat and non-threat while breathing stress-derived sweat.

No differences between conditions were observed for inflection-points ($F=1.35$, $p=0.27$, $N=14$), suggesting that the effect was specific to reducing perceptual noise and thereby increasing accuracy in the evaluation of ambiguous threat, rather than to the attribution of threat to neutral stimuli.

4 Discussion

While it is commonly known that information regarding the emotional stress of others is communicated in humans by visual and auditory cues, these findings suggest that humans—like other mammals—may complement this information with chemosensory cues as well. Sweat collected during an acute emotional stressor, and subsequently presented to an unrelated group of individuals, produced significant brain activation in regions responsible for emotional processing without conscious perception of distinct odor; behavioral data, from this study as well as those from previous studies, suggest the emotional processing may be specific to enhancing vigilance and sharpening threat-discrimination.

The hypothesis and analyses targeted the amygdala, given its critical role in emotion processing. However, activation in response to stress sweat was also found in other areas of the brain, i.e. those associated with vision, motor control, and goal-directed behavior. Previous research had established that emotional stimuli not only activate areas of the brain associated specifically with emotion-perception, but also activate sensory areas associated with perception of concomitantly presented stimuli [34]; this is thought to reflect the increased salience attached to stimuli perceived within emotional contexts. Therefore it is suspected that increased activation within the cerebellum, BA7, and BA20 most likely resulted from participants' enhanced perception during the stress condition of the visual breathing cues (Figure 1a), which required timing inhalation and exhalation to the motion of expanding and contracting rings throughout the experiment.

Because this was the first neuroimaging study to investigate chemosensory cues to emotional stress, a number of potential confounds, both methodological and conceptual were rigorously controlled for. Bacterial contamination of sweat contributes to its strong aversive odor; therefore, sample collection methods were developed that would keep the samples as sterile as possible while still preserving chemical components of interest in apocrine sweat. These were validated using GCMS (see Chapter 7). To ensure that differences observed between the two conditions were not due to differences in participant compliance in following the synchronized cues, trial-specific respiratory parameters for the first experiment were also analyzed (see Chapter 7) and participants' respiration in real-time during each subsequent experiment was closely monitored. The lack of donor sex-detector sex interactions suggests that the effect is unlikely to be consequent to reproductive pheromones released during either of the two conditions. This is a critical point, since a serious limitation of previous studies using stress sweat was the tendency to use male donors and female detectors, which made it impossible to eliminate reproductive pheromones as possible confounds to the effect. Finally, replication of the neurobiological findings across two independent fMRI studies with different donor and detector participants suggests the effect is robust to individual variability.

The mean percentage signal change values (Figure 6b) initially appeared to suggest that, as much as stress sweat increased amygdala activity from baseline, exercise sweat

reduced it from baseline; therefore, the effect might have been inflated by the choice of a control condition (although using AIR as a control condition would have been even more problematic since AIR, unlike EXERCISE, would not have controlled for sweat odor). However, statistical analyses that consider the variance (Figure 6c) make clear that it was the STRESS condition, and not the EXERCISE condition, that was primarily responsible for the STRESS-EXERCISE effect. For the original fMRI study, the change for STRESS-REST was statistically significant or trend, whether it was calculated using the maximally-activated voxel ($T/Z=1.88/1.76$, $p=0.04$), ROI analysis for the superficial amygdala ($T/Z=1.48/1.41$, $p=0.08$), or ROI analysis for the whole amygdala ($T/Z=1.65/1.55$, $p=0.06$). However, for the EXERCISE-REST contrast, none of the three was statistically significant (for SVC maximally-activated voxel: $T/Z=-1.61/-0.27$, $p=0.61$; for the superficial amygdala ROI: $T/Z=-0.52/0.52$, $p=0.30$; for the left amygdala ROI: $T/Z=0.30/0.31$, $p=0.38$). Exactly the same pattern held for the replication study. Here, the change for STRESS-REST was even stronger, whether it was calculated using the maximally-activated voxel ($T/Z=3.69/3.06$, $p=0.000$), ROI analysis for the superficial amygdala ($T/Z=3.23/3.06$, $p=0.000$), or ROI analysis for the whole amygdala ($T/Z=2.58/2.29$, $p=0.01$). However, for the EXERCISE-REST contrast, none of the three was statistically significant (for SVC maximally-activated voxel: $T/Z=-1.43/-0.25$, $p=0.59$; for the superficial amygdala ROI: $T/Z=-0.36/0.35$, $p=0.36$; for the left amygdala ROI: $T/Z=0.67/0.66$, $p=0.26$). Since both original and replication studies show significant differences for the STRESS-REST contrasts, but not for the EXERCISE-REST contrast, it is clear that results obtained for the STRESS-EXERCISE contrast were not driven by participants' responses to the EXERCISE sweat.

The behavioral effect of the STRESS sweat was to sharpen emotional discrimination, rather than to lower thresholds for attribution of threat. These findings are in line with more recent conceptualization of the amygdala's role, in which the amygdala appears to be not simply a marker for fear, but rather involved in evaluating stimuli for potential threat and then coordinating appropriate responses via its cortical feedback connections (see, for example, [35]). The latter view is consistent with a wide range of fMRI results. For example, the amygdala is activated during conditioning to pain [36-38] and in anticipation of potential pain [39], but not to pain itself [40-42]. Likewise, the amygdala is activated in response to social cues to potential threat, such as the aversive outcomes implied by fearful faces [27] but not to unambiguously threatening stimuli such as the object of phobias [43,44]. As such, one would expect that a chemosensory cue that facilitates the evaluation and discrimination of threat from non-threat would also activate the amygdala, as well as lowering sensory gating for olfactory, visual, and auditory cues that might further inform risk-assessment.

One potential limitation of this study design was that morphing was only done between two facial expressions (fear versus neutral); therefore, the study could not confirm whether the sharpened discrimination that was observed extended to all emotional expressions or was restricted specifically for threat. However, results obtained by a recent study [22] argue against generalization. Asked to distinguish between "happy" and "fearful," in a design similar to ours using morphed facial expressions, participants rated ambiguous faces as "fearful" more frequently in the context of stress sweat, thereby

lowering thresholds for detecting fear in others rather than sharpening discrimination. These results suggest that angry and fearful faces communicate distinct types of information that may interact with chemosensory stress cues in complementary ways. *Angry* faces represent a direct threat, and therefore detection of an anxious colleague's alarm cues may elicit greater vigilance in evaluating whether stimuli signal potential for danger. In contrast, when asked to identify whether faces are *fearful* in the context of stress sweat, participants are essentially integrating multi-modal sensory cues in detecting colleagues' anxiety, much as auditory cues such as laughter would bias visual perception of an ambiguous smiling faces towards "joy." Future research, using a within-subjects design, can more directly test this hypothesis.

Previous protocols have sampled sweat in response to stressors such as horror films and pre-examination anxiety. These stressors obviously have the advantage of being easier to administer, but are quite removed from alarm pheromones' evolutionary purpose; i.e., fear associated with imminent physical danger. First-time tandem skydives, which have been shown to reliably induce acute fear (approaching near-pathological states and including traumatic psychological symptoms such as dissociation, loss of awareness, and time-distortion [45-53]), were chosen to address this limitation in an ethically acceptable and scientifically-controlled manner. The endocrine and self-report measures confirm that the protocol reliably provoked profound emotional stress in the sweat donors. However, debriefing of the donors and their tandem-masters post-jump indicated that while fear markedly increased during the ascent, peaking in the minutes leading up to exiting the plane and during freefall, feelings of relief and/or thrill sometimes followed once the parachute opened and upon landing. Donor sweatpads could not be removed until immediately after landing; therefore, it is theoretically possible that the neurobiological and behavioral results resulted from chemosignals emitted in response to nonaffect-specific hyperarousal or thrill, rather than pure fear. It is important to note, however, that alarm substances are well-established neurobiologically, behaviorally, and chemically in a wide number of species, including mammals [54]. Therefore their conservation in humans is a reasonable extension. In contrast, an equivalent "thrill" pheromone has never been reported for any species. Therefore, it is believed that it is much more likely that participants excreted an alarm substance during the initial fear portion of the protocol (>16 minutes), which was retained in the sample even in the face of later relief (< 4 minutes).

This document reports research undertaken at the U.S. Army Natick Soldier Research, Development and Engineering Center, Natick, MA, and has been assigned No. NATICK/TR-10/006 in a series of reports approved for publication.

5 References

1. Pfeiffer W (1963) Alarm substances. *Experientia* 19: 113-123.
2. Kiyokawa Y, Shimozuru M, Kikusui T, Takeuchi Y, Mori Y (2006) Alarm pheromone increases defensive and risk assessment behaviors in male rats. *Physiol Behav* 87: 383-387.
3. Kiyokawa Y, Kikusui T, Takeuchi Y, Mori Y (2005) Mapping the neural circuit activated by alarm pheromone perception by c-Fos immunohistochemistry. *Brain Res* 1043: 145-154.
4. Inagaki H, Kiyokawa Y, Kikusui T, Takeuchi Y, Mori Y (2008) Enhancement of the acoustic startle reflex by an alarm pheromone in male rats. *Physiol Behav* 93: 606-611.
5. Wysocki CJ, Preti G (2004) Facts, fallacies, fears, and frustrations with human pheromones. *Anat Rec A Discov Mol Cell Evol Biol* 281: 1201-1211.
6. McClintock MK (1971) Menstrual synchrony and suppression. *Nature* 229: 244-245.
7. Stern K, McClintock MK (1998) Regulation of ovulation by human pheromones. *Nature* 392: 177-179.
8. Wyart C, Webster WW, Chen JH, Wilson SR, McClary A, et al. (2007) Smelling a single component of male sweat alters levels of cortisol in women. *J Neurosci* 27: 1261-1265.
9. Grosser BI, Monti-Bloch L, Jennings-White C, Berliner DL (2000) Behavioral and electrophysiological effects of androstadienone, a human pheromone. *Psychoneuroendocrinology* 25: 289-299.
10. Jacob S, Hayreh DJ, McClintock MK (2001) Context-dependent effects of steroid chemosignals on human physiology and mood. *Physiol Behav* 74: 15-27.
11. Jacob S, Kinnunen LH, Metz J, Cooper M, McClintock MK (2001) Sustained human chemosignal unconsciously alters brain function. *Neuroreport* 12: 2391-2394.
12. Jacob S, Garcia S, Hayreh D, McClintock MK (2002) Psychological effects of musky compounds: comparison of androstadienone with androstenol and muscone. *Horm Behav* 42: 274-283.
13. Savic I, Berglund H, Gulyas B, Roland P (2001) Smelling of odorous sex hormone-like compounds causes sex-differentiated hypothalamic activations in humans. *Neuron* 31: 661-668.

14. Lundstrom JN, Goncalves M, Esteves F, Olsson MJ (2003) Psychological effects of subthreshold exposure to the putative human pheromone 4,16-androstadien-3-one. *Horm Behav* 44: 395-401.
15. Lundstrom JN, Olsson MJ, Schaal B, Hummel T (2006) A putative social chemosignal elicits faster cortical responses than perceptually similar odorants. *Neuroimage* 30: 1340-1346.
16. Bensafi M, Tsutsui T, Khan R, Levenson RW, Sobel N (2004) Sniffing a human sex-steroid derived compound affects mood and autonomic arousal in a dose-dependent manner. *Psychoneuroendocrinology* 29: 1290-1299.
17. Lundstrom JN, Olsson MJ (2005) Subthreshold amounts of social odorant affect mood, but not behavior, in heterosexual women when tested by a male, but not a female, experimenter. *Biol Psychol* 70: 197-204.
18. Villemure C, Bushnell MC (2007) The effects of the steroid androstadienone and pleasant odorants on the mood and pain perception of men and women. *Eur J Pain* 11: 181-191.
19. Chen D, Haviland-Jones J (2000) Human olfactory communication of emotion. *Perceptual & Motor Skills* 91: 771-781.
20. Ackerl K, Atzmueller M, Grammer K (2002) The scent of fear. *Neuroendocrinology Letters* 23: 79-84.
21. Chen D, Katdare A, Lucas N (2006) Chemosignals of fear enhance cognitive performance in humans. *Chem Senses* 31: 415-423.
22. Zhou W, Chen D (2009) Fear-related chemosignals modulate recognition of fear in ambiguous facial expressions. *Psychol Sci* 20: 177-183.
23. Pause BM, Ohrt A, Prehn A, Ferstl R (2004) Positive emotional priming of facial affect perception in females is diminished by chemosensory anxiety signals. *Chem Senses* 29: 797-805.
24. Prehn A, Ohrt A, Sojka B, Ferstl R, Pause BM (2006) Chemosensory anxiety signals augment the startle reflex in humans. *Neurosci Lett* 394: 127-130.
25. LeDoux J (2003) The emotional brain, fear, and the amygdala. *Cell Mol Neurobiol* 23: 727-738.
26. Phelps EA, LeDoux JE (2005) Contributions of the amygdala to emotion processing: from animal models to human behavior. *Neuron* 48: 175-187.

27. Phan KL, Wager T, Taylor SF, Liberzon I (2002) Functional neuroanatomy of emotion: a meta-analysis of emotion activation studies in PET and fMRI. *Neuroimage* 16: 331-348.
28. Zald DH, Pardo JV (2000) Functional neuroimaging of the olfactory system in humans. *Int J Psychophysiol* 36: 165-181.
29. Kevetter GA, Winans SS (1981) Connections of the corticomедial amygdala in the golden hamster. I. Efferents of the "vomeronasal amygdala". *J Comp Neurol* 197: 81-98.
30. Yokosuka M, Matsuoka M, Ohtani-Kaneko R, Iigo M, Hara M, et al. (1999) Female-soiled bedding induced fos immunoreactivity in the ventral part of the preammygdala nucleus (PMv) of the male mouse. *Physiol Behav* 68: 257-261.
31. Anderson AK, Christoff K, Stappen I, Panitz D, Ghahremani DG, et al. (2003) Dissociated neural representations of intensity and valence in human olfaction. *Nat Neurosci* 6: 196-202.
32. Winston JS, Gottfried JA, Kilner JM, Dolan RJ (2005) Integrated neural representations of odor intensity and affective valence in human amygdala. *J Neurosci* 25: 8903-8907.
33. Klein SA (2001) Measuring, estimating, and understanding the psychometric function: a commentary. *Percept Psychophys* 63: 1421-1455.
34. Adolphs R (2004) Emotional vision. *Nat Neurosci* 7: 1167-1168.
35. Amaral DG (2002) The primate amygdala and the neurobiology of social behavior: implications for understanding social anxiety. *Biol Psychiatry* 51: 11-17.
36. Buchel C, Dolan RJ, Armony JL, Friston KJ (1999) Amygdala-hippocampal involvement in human aversive trace conditioning revealed through event-related functional magnetic resonance imaging. *J Neurosci* 19: 10869-10876.
37. Buchel C, Morris J, Dolan RJ, Friston KJ (1998) Brain systems mediating aversive conditioning: an event-related fMRI study. *Neuron* 20: 947-957.
38. LaBar KS, Gatenby JC, Gore JC, LeDoux JE, Phelps EA (1998) Human amygdala activation during conditioned fear acquisition and extinction: a mixed-trial fMRI study. *Neuron* 20: 937-945.
39. Phelps EA, O'Connor KJ, Gatenby JC, Gore JC, Grillon C, et al. (2001) Activation of the left amygdala to a cognitive representation of fear. *Nat Neurosci* 4: 437-441.

40. Derbyshire SW, Jones AK, Gyulai F, Clark S, Townsend D, et al. (1997) Pain processing during three levels of noxious stimulation produces differential patterns of central activity. *Pain* 73: 431-445.
41. Petrovic P, Carlsson K, Petersson KM, Hansson P, Ingvar M (2004) Context-dependent deactivation of the amygdala during pain. *J Cogn Neurosci* 16: 1289-1301.
42. Petrovic P, Ingvar M, Stone-Elander S, Petersson KM, Hansson P (1999) A PET activation study of dynamic mechanical allodynia in patients with mononeuropathy. *Pain* 83: 459-470.
43. Rauch SL, Savage CR, Alpert NM, Miguel EC, Baer L, et al. (1995) A positron emission tomographic study of simple phobic symptom provocation. *Arch Gen Psychiatry* 52: 20-28.
44. Wik G, Fredrikson M, Ericson K, Eriksson L, Stone-Elander S, et al. (1993) A functional cerebral response to frightening visual stimulation. *Psychiatry Res* 50: 15-24.
45. Campbell LA, Bryant RA (2007) How time flies: a study of novice skydivers. *Behav Res Ther* 45: 1389-1392.
46. Chatterton RT, Jr., Vogelsong KM, Lu YC, Hudgens GA (1997) Hormonal responses to psychological stress in men preparing for skydiving. *J Clin Endocrinol Metab* 82: 2503-2509.
47. Fenz WD, Epstein S (1967) Gradients of physiological arousal in parachutists as a function of an approaching jump. *Psychosom Med* 29: 33-51.
48. Schedlowski M, Tewes U (1992) Physiological arousal and perception of bodily state during parachute jumping. *Psychophysiology* 29: 95-103.
49. Schedlowski M, Benschop RJ, Schmidt RE (1995) Psychological aspects of stress immunology. *Immunol Today* 16: 165.
50. Schedlowski M, Fluge T, Richter S, Tewes U, Schmidt RE, et al. (1995) Beta-endorphin, but not substance-P, is increased by acute stress in humans. *Psychoneuroendocrinology* 20: 103-110.
51. Schedlowski M, Jacobs R, Stratmann G, Richter S, Hadicke A, et al. (1993) Changes of natural killer cells during acute psychological stress. *J Clin Immunol* 13: 119-126.
52. Benschop RJ, Jacobs R, Sommer B, Schurmeyer TH, Raab JR, et al. (1996) Modulation of the immunologic response to acute stress in humans by beta-blockade or benzodiazepines. *FASEB J* 10: 517-524.

53. Sterlini GL, Bryant RA (2002) Hyperarousal and dissociation: a study of novice skydivers. *Behav Res Ther* 40: 431-437.
54. Wyatt T (2003) *Pheromones and animal behaviour: communication by smell and taste*. Cambridge: Cambridge University Press.
55. Gallagher P, Leitch MM, Massey AE, McAllister-Williams RH, Young AH (2006) Assessing cortisol and dehydroepiandrosterone (DHEA) in saliva: effects of collection method. *J Psychopharmacol* 20: 643-649.
56. Natsch A, Gfeller H, Gygax P, Schmid J, Acuna G (2003) A specific bacterial aminoacylase cleaves odorant precursors secreted in the human axilla. *J Biol Chem* 278: 5718-5727.
57. Preti G, Wysocki CJ, Barnhart KT, Sondheimer SJ, Leyden JJ (2003) Male axillary extracts contain pheromones that affect pulsatile secretion of luteinizing hormone and mood in women recipients. *Biol Reprod* 68: 2107-2113.
58. Makin HLJ, Trafford DJH, Nolan J (1998) *Mass Spectra and GC Data of Steroids*. Weinheim, Germany: Wiley-VCH. 790 p.
59. Mackay D, Shiu WY, Sutherland RP (1979) Determination of air-water Henry's law constants for hydrophobic pollutants. *Environ Sci Technol* 13: 333-337.
60. Lyman WJ, Reehl WF, Rosenblatt DH (1982) *Handbook of chemical property estimation methods*. New York: McGraw-Hill.
61. de Kock HL, Heinze PH, Potgieter CM, Dijksterhuis GB, Minnaar A (2001) Temporal aspects related to the perception of skatole and androstenone, the major boar odour compounds. *Meat Science* 57: 61-70.
62. Gower DB, Mallet AI, Watkins WJ, Wallace LM, Calame JP (1997) Capillary gas chromatography with chemical ionization negative ion mass spectrometry in the identification of odorous steroids formed in metabolic studies of the sulphates of androsterone, DHA and 5[alpha]-androst-16-en-3[beta]-ol with human axillary bacterial isolates. *J Steroid Biochem Mol Biol* 63: 81-89.
63. Lorig TS, Elmes DG, Zald DH, Pardo JV (1999) A computer-controlled olfactometer for fMRI and electrophysiological studies of olfaction. *Behav Res Methods Instrum Comput* 31: 370-375.
64. Caruso S, Grillo C, Agnello C, Maiolino L, Intelisano G, et al. (2001) A prospective study evidencing rhinomanometric and olfactometric outcomes in women taking oral contraceptives. *Hum Reprod* 16: 2288-2294.

65. Hummel T, Gollisch R, Wildt G, Kobal G (1991) Changes in olfactory perception during the menstrual cycle. *Experientia* 47: 712-715.
66. Lundstrom JN, McClintock MK, Olsson MJ (2006) Effects of reproductive state on olfactory sensitivity suggest odor specificity. *Biol Psychol* 71: 244-247.
67. Mair RG, Bouffard JA, Engen T, Morton TH (1978) Olfactory sensitivity during the menstrual cycle. *Sens Processes* 2: 90-98.
68. Bremner JD, Steinberg M, Southwick SM, Johnson DR, Charney DS (1993) Use of the Structured Clinical Interview for DSM-IV Dissociative Disorders for systematic assessment of dissociative symptoms in posttraumatic stress disorder. *American Journal of Psychiatry* 150: 1011-1014.
69. Tabert MH, Steffener J, Albers MW, Kern DW, Michael M, et al. (2007) Validation and optimization of statistical approaches for modeling odorant-induced fMRI signal changes in olfactory-related brain areas. *Neuroimage* 34: 1375-1390.
70. Poellinger A, Thomas R, Lio P, Lee A, Makris N, et al. (2001) Activation and habituation in olfaction--an fMRI study. *Neuroimage* 13: 547-560.
71. Sobel N, Prabhakaran V, Zhao Z, Desmond JE, Glover GH, et al. (2000) Time course of odorant-induced activation in the human primary olfactory cortex. *J Neurophysiol* 83: 537-551.
72. Eickhoff SB, Stephan KE, Mohlberg H, Grefkes C, Fink GR, et al. (2005) A new SPM toolbox for combining probabilistic cytoarchitectonic maps and functional imaging data. *Neuroimage* 25: 1325-1335.
73. Newsome WT, Britten KH, Movshon JA (1989) Neuronal correlates of a perceptual decision. *Nature* 341: 52-54.