

VoIP and Mission Critical Data Traffic over Heterogeneous Military Networks

Maurizio Bisio, Enzo Fortunato

Selenia Communications S.p.A.
via Pieragostini 80
16151 Genoa
ITALY

{maurizio.bisio, enzo.fortunato}@seleniacomms.com

Mario Marchese, Maurizio Mongelli

DIST (Department of Communication Computer and System Science)
University of Genoa
via Opera Pia 13
16145 Genoa
ITALY

{dama, mopa}@dist.unige.it

A Quality of Service (QoS) mapping problem arises when different encapsulation formats are employed to support the QoS over different transport technologies. For example when IP packets are transferred over ATM or MPLS core networks. The paper faces this problem in terms of bandwidth management, by investigating the sensitivity of bandwidth needs due to the change of encapsulation format. We study a novel control algorithm to estimate the bandwidth shift required to keep the same performance guarantees independently of the technology change. The proposed algorithm is based on the Infinitesimal Perturbation Analysis (IPA), which is a sensitivity estimation technique for Discrete Event Systems (DESes). Simulation results concern a comparison with an heuristic much used in industrial applications as well as some experimental tests concerning Voice over IP to highlight the fast convergence of the algorithm in variable system conditions.

INTRODUCTION

Some studies report that a possible evolution of the next few year will include a core network composed of ATM (or MPLS) technology connecting border IP portions. It is a widespread perspective that "...capital expenditure constraints in both service providers and enterprises will mean that MPLS will evolve in the carrier core network first, with ATM remaining for some time to come as the primary technology for multiservice delivery in bandwidth-limited edge and access networks" [Bocci03]. In such situation, Quality of Service (QoS) internetworking issues, namely the maintenance of an end-to-end communication between users attached to access networks supported by different QoS technologies reveals to be a hot topic of research. This problem is enforced by the fact that the traffic flows that interconnects users located in different localities of the world are often routed throughout different proprietary networks, often called *Autonomous Systems (ASes)*, managed by different *Internet Service Providers (ISPs)* [Gao01].

If the overall network is composed of portions implementing different technologies, the key point is measuring the *equivalent bandwidth shift* imposed by the different encapsulation formats. Concerning a network scenario composed of an ATM core fed by IP edge flows, it is topical to know the amount of

Bisio, M.; Fortunato, E.; Marchese, M.; Mongelli, M. (2006) VoIP and Mission Critical Data Traffic over Heterogeneous Military Networks. In *Military Communications* (pp. P11-1 – P11-12). Meeting Proceedings RTO-MP-IST-054, Poster 11. Neuilly-sur-Seine, France: RTO. Available from: <http://www.rto.nato.int/abstracts.asp>.

Report Documentation Page

Form Approved
OMB No. 0704-0188

Public reporting burden for the collection of information is estimated to average 1 hour per response, including the time for reviewing instructions, searching existing data sources, gathering and maintaining the data needed, and completing and reviewing the collection of information. Send comments regarding this burden estimate or any other aspect of this collection of information, including suggestions for reducing this burden, to Washington Headquarters Services, Directorate for Information Operations and Reports, 1215 Jefferson Davis Highway, Suite 1204, Arlington VA 22202-4302. Respondents should be aware that notwithstanding any other provision of law, no person shall be subject to a penalty for failing to comply with a collection of information if it does not display a currently valid OMB control number.

1. REPORT DATE DEC 2006	2. REPORT TYPE N/A	3. DATES COVERED -	
4. TITLE AND SUBTITLE VoIP and Mission Critical Data Traffic over Heterogeneous Military Networks		5a. CONTRACT NUMBER	
		5b. GRANT NUMBER	
		5c. PROGRAM ELEMENT NUMBER	
6. AUTHOR(S)		5d. PROJECT NUMBER	
		5e. TASK NUMBER	
		5f. WORK UNIT NUMBER	
7. PERFORMING ORGANIZATION NAME(S) AND ADDRESS(ES) Selenia Communications S.p.A. via Pieragostini 80 16151 Genoa ITALY		8. PERFORMING ORGANIZATION REPORT NUMBER	
9. SPONSORING/MONITORING AGENCY NAME(S) AND ADDRESS(ES)		10. SPONSOR/MONITOR'S ACRONYM(S)	
		11. SPONSOR/MONITOR'S REPORT NUMBER(S)	
12. DISTRIBUTION/AVAILABILITY STATEMENT Approved for public release, distribution unlimited			
13. SUPPLEMENTARY NOTES See also ADM202750. RTO-MP-IST-054, Military Communications (Les communications militaires), The original document contains color images.			
14. ABSTRACT			
15. SUBJECT TERMS			
16. SECURITY CLASSIFICATION OF:			17. LIMITATION OF ABSTRACT
a. REPORT unclassified	b. ABSTRACT unclassified	c. THIS PAGE unclassified	UU
			18. NUMBER OF PAGES 12
			19a. NAME OF RESPONSIBLE PERSON

bandwidth that needs to be offered by the core to support the QoS required by the IP flows. The main idea is to have a control algorithm that can dimension correctly the necessary bandwidth shift but does not need any closed-form formula of the performance metric and is able to react to traffic changes.

The paper is organized as follows. Section II states the interworking environment where the bandwidth allocation algorithm is applied. Section III focuses on the main problems of QoS mapping. Section IV contains the definition of the algorithm proposed and provides details about estimation performance metric, the optimization problem and the conditions for convergence. Section V contains the results and Section VI the conclusions.

THE QOS INTERWORKING ENVIRONMENT

The Application Framework

A possible application framework is shown in Figs 1 and 2, which shows the IP over ATM environment. IP packets originated by an edge IP network are transported over an ATM core. The identification of the technology (IP and ATM) is just an example; each of them may be substituted by alternative technologies.

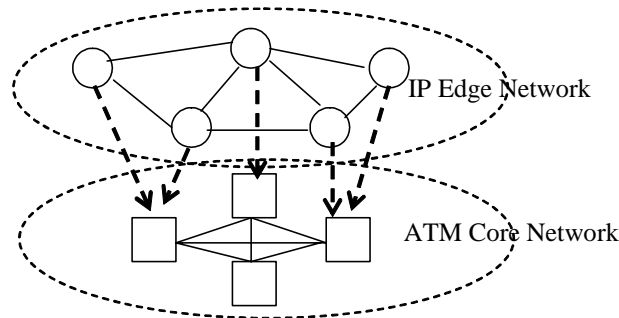


Fig. 1. IP over ATM architecture.

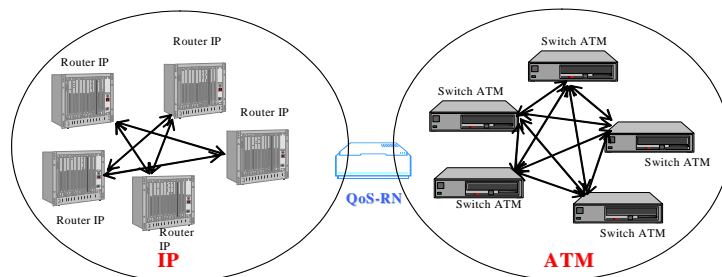


Fig. 2. The QoS-RN.

The ATM over IP environment, still relevant and timely due to the widespread diffusion of ATM backbones may be extended to other encapsulation formats. IP is typically mapped onto ATM using AAL 5 frames but both the ATM Forum ([ATM01]) and the *Internet Engineering Task Force* (IETF) ([Fischer02, Martini02]) are currently developing several techniques in order to manage the interworking between ATM and MPLS flows. The *Pseudo Wire Emulation Edge-to-Edge* (PWE3) working group of IETF is working on protocols for transporting layer 2 services (which, in PWE3 view, includes also ATM) over IP-based network. This includes not only the transport of ATM over MPLS ([Fischer02]), but frame relay, circuit emulation, synchronous optical network (SONET), and Ethernet over MPLS, too. Our

control algorithm is suitable for managing the aforementioned interworking scenarios. However, without loss of generality, we take the IP over ATM interworking framework as a reference.

THE QOS MAPPING PROBLEM

References [IETF99, Garret98] of IETF and [ATM00] of the ATM Forum are the most important proposed standards for the mapping of QoS declarations between different QoS technologies. They investigate which ATM service categories must be chosen to support different QoS IP service classes. In reference [Giac99] the mapping of IntServ over ATM is investigated, showing that the ATM nrt-VBR service class gives more bandwidth saving than the CBR service class. Reference [Cobley98] shows by simulations analysis that the IntServ-ATM mapping of [Garret98] causes an excessive cell loss rate. These works have in common the investigation of the change of the QoS parameters at the QoS-RN when a flow changes its transport layer, namely the QoS parameters change their specification units from cell to packet and viceversa. Actually, one of the topical problems is the effect of the basic information unit length over the bandwidth requirements of a traffic flow [Schmitt03]. The topic is extremely complex even because it heavily depends on the traffic statistical behavior, but it is fundamental for a proper design of QoS interworking.

THE EQUIVALENT BANDWIDTH SHIFT AT THE QOS-RN

Definition of the problem

We suppose that the bandwidth pipe assigned to the IP flow in the IP portion of the network has been correctly dimensioned by employing one of the aforementioned equivalent bandwidth techniques. The problem is to find the new bandwidth assignment when such IP flow changes the transfer mode and a new encapsulation format (e.g., the LLC-SNAP encapsulation of the AAL5) is applied at the QoS-RN, tunneling IP packets along the ATM portion of the network.

Fig. 3 shows the protocol stack within the QoS-RN. The layer identified as QoS-RN is virtual and represents the control algorithm introduced in this work. Its role is to assign the necessary bandwidth to the ATM portion, thus maintaining the same level of quality guaranteed by IP.

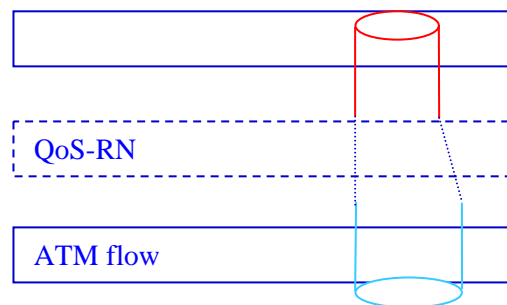


Fig. 3. The equivalent bandwidth shift at the QoS-RN.

We adopt a SLA based on a protection over the loss of the information carried by the IP DiffServ flow. Such SLA is expressed in terms of IP *Packet Loss Probability* (PLP), which is the performance metric used in this paper, both within the IP and the ATM portion. An IP packet is lost if at least one of the ATM cells of its encapsulation is lost along the ATM tunnel. In this scenario, two issues arise: the first one concerns how the ATM *Cell Loss Probability* (CLP) can influence, in the ATM subnetwork, the IP-PLP. The second one concerns how much bandwidth must be reserved in the ATM tunnel to preserve the SLA guaranteed in the QoS IP subnetwork.

Some more words are necessary concerning the notion of equivalent bandwidth and its application in the framework of this work. As mentioned above, equivalent bandwidth is the minimum amount of network resources to be allocated to guarantee a fixed degree of performance. It can have a local switching element value and concern only the interworking node but its scope may be also extended including end-to-end communication. It may be representative of an IP tunnel within an IP portion, of a Virtual Path (VP) [Schwartz96] in ATM, of a Label Switched Path (LSP) in MPLS, of a bundle of circuits in ISDN.

Fig. 4 reports the interworking scenario along with the buffer model used to get the results reported in this paper.

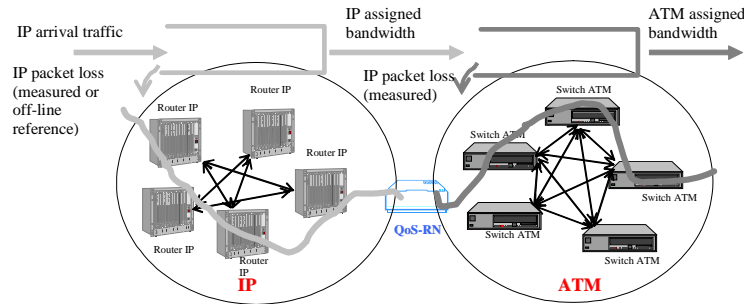


Fig. 4. Interworking scenario and used model.

As said before, we suppose to measure the IP packet loss volume within ATM portion and within the IP portion (or, in this last case, to have an off-line reference value) by monitoring IP and ATM traffic performance. The same scheme may be applied with different metrics as delay and jitter. According to such on-line measurements, the algorithm proposed adapts the bandwidth assigned to the ATM portion so to keep the same loss volume obtained within the IP network so that the same QoS is guaranteed, independently of the change in the transfer mode. Operatively, if applied along a Virtual Path, after the computation, a signal of bandwidth reservation will be propagated along the ATM subnetwork in order to perform the actual bandwidth assignment along the VP.

The derivative estimation of the loss performance metric

To do this, we firstly need a derivative estimate of the performance index (the packet loss) defined in the SLA. With a notation that slightly differs from [Wardi02], we adopt a SFM for each of the modeling buffers, shown in Fig. 4. Each buffer has a finite-capacity buffer of fixed size c and a single server with service rate θ . Fig. 5 reports the formal model of a buffer.

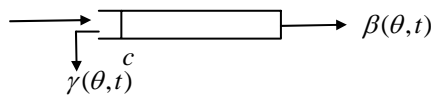


Fig. 5. Model of the traffic buffers.

The stochastic processes associated with this model and essential for the optimization procedure are: $\alpha(t)$: the input flow rate (*inflow*) process into the SFM; $\gamma(\theta, t)$: the loss rate (*overflow*) process due to a full buffer and $\beta(\theta, t)$: the *outflow* rate process of the buffer.

Since our aim is to exploit a control scheme for the loss probabilities of the IP packets on the ATM portion of the network, we adopt the following IPA performance measure: the *loss volume* $L_V(\cdot)$ over a time interval $[0, T]$. It is defined as:

$$L_V(\theta) = \int_0^T \gamma(\theta, t) dt \quad (1)$$

Now, our first purpose is to obtain a derivative estimate of performance metric, $L_V(\theta)$, with respect to the service rate $\theta \in \mathfrak{R}$. Let B_k be an “active” period of the buffer between two times of bandwidth reallocation, namely, a period of time in which the buffer is non-empty. Let ξ_k be the starting point of B_k . Let ν_k be the instant of time when the last loss occurs during B_k . Then, for every θ , it can be shown ([Wardi02]) that:

$$\frac{\partial L_V^k(\theta)}{\partial \theta} = -(\nu_k(\theta) - \xi_k(\theta)) \quad (2)$$

The contribution to the derivative of each active period B_k , during which some losses occurred, is the length of the time interval from the start of B_k until the last time point in B_k at which the buffer is full. Denoting by N_B the number of active periods during an observation window (for instance, between two consecutive service rate reallocations of the buffer), an estimation of the derivative performance can be obtained as (Fig. 6):

$$\frac{\partial L_V(\theta)}{\partial \theta} = \sum_{k=1}^{N_B} \frac{\partial L_V^k(\theta)}{\partial \theta} \quad (3)$$

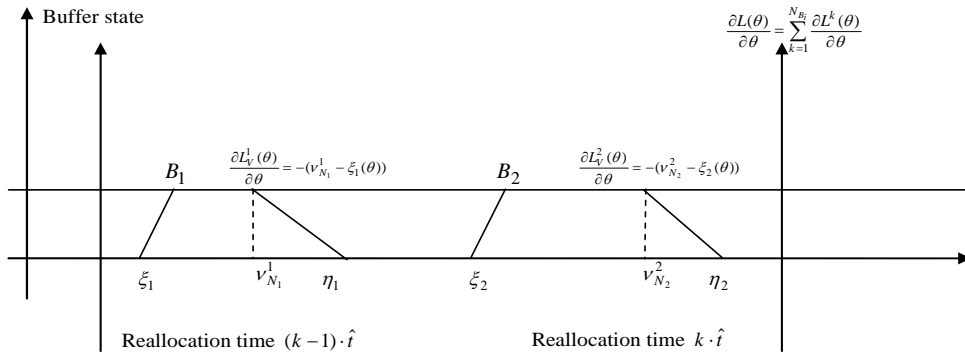


Fig. 6. IPA derivative estimation (3), looking at the busy periods of the buffer.

The Optimization Problem at the QoS-Relay Node

Let $L_V^{IP}(\theta^{IP})$ be the loss volume measured (or imposed) at the IP buffer according to the IP bandwidth allocation θ^{IP} guaranteed on the IP subnetwork. Let $L_V^{IPoATM}(\theta^{ATM})$ be the loss volume of the IP packets measured at the ATM buffer according to the ATM bandwidth allocation θ^{ATM} . The problem is to find the optimal bandwidth allocation, $Opt \theta^{ATM}$, in order to minimize a proper penalty cost function $J(\theta^{ATM})$:

$$Opt \theta^{ATM} = \arg \min_{\theta^{ATM} \in \mathfrak{R}} J(\theta^{ATM}); J(\theta^{ATM}) = E_{\omega \in \Theta} [L_V^{IP}(\theta^{IP}) - L_V^{IPoATM}(\theta^{ATM})]^2 \quad (4)$$

VoIP and Mission Critical Data Traffic over Heterogeneous Military Networks

Let $L_{\Delta V}^{IPoATM} = [L_V^{IP}(\theta^{IP}) - L_V^{IPoATM}(\theta^{ATM})]^2$ be the functional cost whose derivative estimation is needed to establish an optimization procedure aimed at approximating the optimal solution $^{Opt}\theta^{ATM}$ of (4). The control variable is the θ^{ATM} and such derivative estimation can be obtained according to

$$\frac{\partial L_{\Delta V}^{IPoATM}(\theta^{ATM})}{\partial \theta^{ATM}} = 2 \cdot \frac{\partial L_V^{IPoATM}(\theta^{ATM})}{\partial \theta^{ATM}} [L_V^{IPoATM}(\theta^{ATM}) - L_V^{IP}(\theta^{IP})] \quad (5)$$

$\frac{\partial L_V^{IPoATM}(\theta^{ATM})}{\partial \theta^{ATM}}$ is computed according to the IPA formulas (2) and (3). The proposed optimization algorithm is based on the gradient method ruled by (6).

$$\theta_{k+1}^{ATM} = \theta_k^{ATM} - \eta_k \frac{\partial L_{\Delta V}^{IPoATM}(\theta_k^{ATM})}{\partial \theta_k^{ATM}} \quad (6)$$

where η_k is the gradient stepsize.

PERFORMANCE EVALUATION

The Heuristic Allocation

We compare the proposed control algorithm with a heuristic strategy much used in industry. It disposes of a perfect knowledge about the bandwidth assignment on the IP portion of the network and about the IP packet size distribution. The increase in the bandwidth allocation necessary for the ATM tunnel can be foreseen by mean of the well-known “*Cell-Tax*” effect of the AAL5 with LLC-SNAP encapsulation (see, e.g., [Schmitt03]). Since, during the generation of the ATM frame, at each IP packet, two octets need to be added for the LLC-SNAP overhead, the number of ATM cells for each IP packet is:

$$\#ATMCells = \left\lceil \frac{DimIPPacket + 2}{48} \right\rceil \quad (8)$$

where $DimIPPacket$ denotes the IP packet’s size in bytes and 48 is the payload of an ATM cell in bytes. Hence, it is possible to compute the overall overhead due to the encapsulation format on the ATM frame and then the percentage bandwidth increase on the ATM side of the network, denoted in the following by $CellTax\%$:

$$CellTax\% = \frac{\#ATMCells \cdot 53 - DimIPPacket}{DimIPPacket} \cdot 100 \quad (9)$$

where 53 is the overall size (payload and overhead) of an ATM cell in bytes.

If the IP source has its own packet’s size distribution, the $CellTax$ must take into account the mean number of ATM cells in the ATM frame as:

$$CellTax\% = \frac{\overline{\#ATMCells} \cdot 53 - \overline{DimIPPacket}}{\overline{DimIPPacket}} \cdot 100 \quad (10)$$

where $\overline{DimIPPacket}$ is the mean size of the IP packets and $\overline{\#ATMCells}$ is the mean number of ATM cells generated by an IP source that produces n different packet's size $DimIPPacket_i$, $i=1, \dots, n$, each of

which with probability p_i , ($\sum_{i=1}^n p_i = 1$):

$$\overline{\#ATMCells} = \sum_{i=1}^n \frac{DimIPPacket_i + 16}{48} \cdot p_i \quad (11)$$

A good forecast concerning the ATM bandwidth allocation is then:

$$CellTax_{\theta^{ATM}} = (1 + CellTax\%) \cdot \theta^{IP} \quad (12)$$

Tunnelling Voice over IP through ATM

We now consider the case of a *Voice over IP* (VoIP) traffic, originated in an IP-based network, and carried along an ATM-based portion. Taking [Byungsuk02] as a reference, each VoIP source is modeled as an exponentially modulated on-off process, with the mean on and off times, as for the ITU P.59 ([ITU P.59]) recommendation, being 1.008 s and 1.587 s, respectively. All VoIP connections are modeled as 16.0 Kbps flows voice over RTP/UDP/IP. The packet size is 80 bytes. The required end-to-end performance objectives of a VoIP flow (shown in Table 1) are less than 2% of IP PLP and 150 ms of end-to-end delay.

The proposed control algorithm is adopted in order to manage the equivalent bandwidth shift due to the LLC SNAP encapsulation of the VoIP packets. For now, it concerns only the loss, but as should be clear from the results, the allocation performed allows also getting satisfying performance concerning the delay.

Table 1. VoIP Service Level Agreement ([ITU P.59]).

<i>Service Level Agreement</i>	<i>Range</i>
Premium VBR for <i>Voice over IP</i>	Variable Bit Rate (VBR)
Traffic description and conformance testing of VoIP	<ul style="list-style-type: none"> • Peak Rate: 16 kbps; • Mean Rate: 14.87 kbps; • Packet Size: 80 bytes; • Maximum Burst Size: 1.008 s.
Performance guarantees	Packet Loss Rate: 2 %; Packet Transfer Delay: 150 ms;

We compare the aforementioned *CellTaxAllocation* strategy with the proposed control algorithm with the same size of the IP and ATM buffers (fixed at 20 VoIP packets corresponding to 31 ATM cells) and by progressively increasing, from 70 to 110, the number of VoIP sources in the flow. The step is of 10 sources each 3000 s. Each time the number of VoIP source changes (every 3000 seconds) the ATM bandwidth allocation of the control algorithm is initialized with the *CellTaxAllocation* strategy (i.e., $\theta^{ATM}(0) = (1 + CellTax\%) \cdot \theta^{IP}$), then, every 30 seconds a new derivative estimation of the penalty cost function (4) is computed according to (5) and a new ATM bandwidth allocation is performed through the gradient descent (6). The gradient stepsize η is fixed to 8.0, which is the best value (found by simulation inspection) to maximize the convergence speed.

VoIP and Mission Critical Data Traffic over Heterogeneous Military Networks

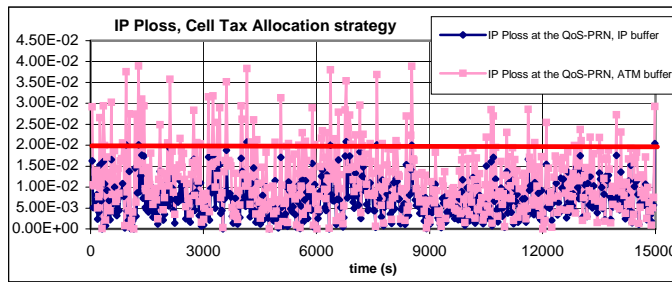


Fig. 7. VoIP over ATM simulation scenario, IP PLP *CellTaxAllocation* strategy.

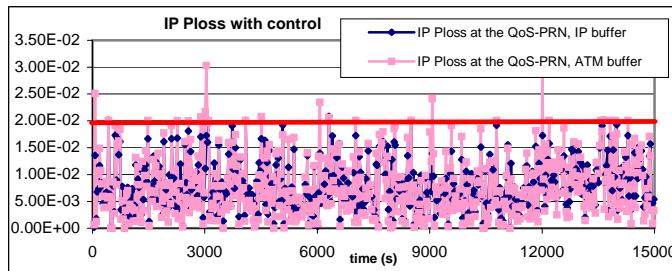


Fig. 8. VoIP over ATM simulation scenario, IP PLP with control.

The IP bandwidth allocation guarantees the required IP PLP along the IP portion. Fig. 7 shows the failure of the *CellTaxAllocation* strategy at guaranteeing the required IP PLP along the ATM tunnel, while the proposed control algorithm (Fig. 8) is able to achieve the required QoS performance.

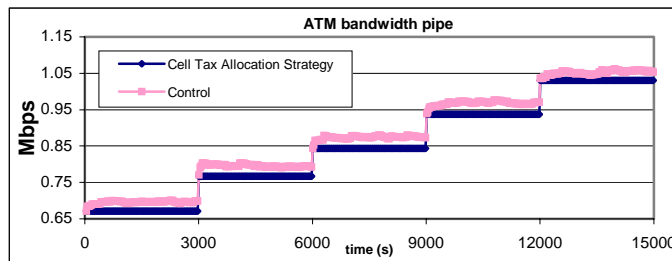


Fig. 9. VoIP over ATM simulation scenario, ATM pipe.

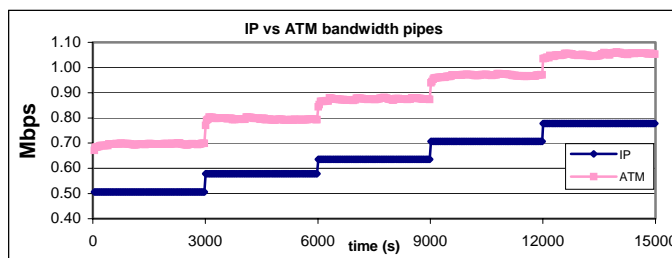


Fig. 10. VoIP over ATM simulation scenario, IP versus ATM bandwidth pipes.

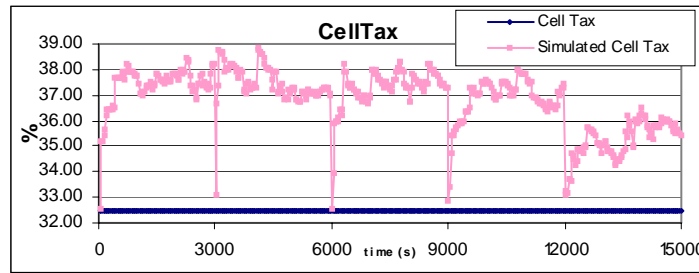


Fig. 11. VoIP over ATM simulation scenario, Cell Tax.

In Fig. 9 the two types of ATM bandwidth allocation techniques are compared showing that, even if the buffers are of equal size, the *CellTaxAllocation* strategy underestimates the required ATM equivalent bandwidth to correctly carry the VoIP flows. In Fig. 10 the equivalent bandwidth shift between the IP and ATM is shown. In Fig. 11 the real *CellTax* of the ATM tunnel is depicted for each reallocation step. The convergence time speed is outstanding.

As far as the end-to-end delay of the VoIP SLA is concerned (Table 1), it should be noted that even with the lowest bandwidth allocation (0.50 Mbps of the 70 VoIP sources case, see Fig. 10), the maximum delay of a full buffer is around 25 ms. Therefore, along a route of no more than 6 nodes the required 150 ms end-to-end delay is guaranteed.

Tunnelling IP Mission Critical Data over ATM

We consider now the case of mission critical data characterized by the *trimodal* distribution in the packet size. According to it, the packet size can assume three different values: a with probability p_a , b with probability p_b and c with probability $1 - p_a - p_b$. The trimodal distribution is widely used to accurately describe the packet size distribution of the current Internet traffic. A Pareto distributed interarrival time between the IP packets has been introduced. The mean interarrival time used are 10 ms and 100 ms and the number of connections in the IP flow is 1, 20, 100. The IP buffer size is set to 150,000 bytes and the IP bandwidth allocation θ^{IP} guarantees a IP PLP $\leq 1 \cdot 10^{-2}$.

A comparison between the *CellTaxAllocation* strategy and the proposed control scheme is shown in Table 2 (ATM buffer size = IP buffer size = 2830 ATM cells) and Table 3 (ATM buffer size = 200 ATM cells), where, from left to right, the mean interarrival times of the IP packets (InterTime IP Packets), the number of connection in the flow (#Conn), the IP bandwidth allocation (θ^{IP}), the ATM bandwidth allocation computed by the *CellTaxAllocation* strategy ($^{CellTax}\theta^{ATM}$), the ATM bandwidth allocation computed by the proposed control algorithm ($^{Opt}\theta^{ATM}$), the “real” *CellTax* computed by the proposed control algorithm (i.e., $Simulated\ CellTax\% = \frac{^{Opt}\theta^{ATM} - \theta^{IP}}{\theta^{IP}} \cdot 100$), and the difference between the *Simulated CellTax%* and the *CellTax%* computed by the *CellTaxAllocation* strategy (*CellTax%* difference) are visualized. As shown in the previous Section, the $^{Opt}\theta^{ATM}$ is the optimal value for the dimensioning of the bandwidth pipe assigned to the IP flow in the ATM subnetwork and it should be taken as the target value for the following comparison.

VoIP and Mission Critical Data Traffic over Heterogeneous Military Networks

Table 2. ATM buffer size = 2830 ATM cells.

<i>Arr-Time</i> <i>IP Packets</i>	<i>#Conn</i>	ρ^{IP} <i>Mbps</i>	<i>CellTax%</i>	$CellTax_{\rho^{ATM}}$ <i>Mbps</i>	$Opt_{\rho^{ATM}}$ <i>Mbps</i>	<i>Simul.</i> <i>CellTax%</i>	<i>CellTax% diff.</i>
0.01	1	0.28	20.44%	0.337	0.352	25.82%	4.38%
0.01	20	5.700	20.44%	6.865	7.024	23.22%	2.31%
0.01	100	28.500	20.44%	34.325	34.944	22.61%	1.80%
0.1	1	0.039	20.44%	0.047	0.048	23.66%	2.19%
0.1	20	0.78	20.44%	0.939	0.964	23.61%	2.62%
0.1	100	4.100	20.44%	4.938	4.870	18.79%	-1.38%

Table 3. ATM buffer size = 200 ATM cells.

<i>Arr-Time</i> <i>IP Packets</i>	<i>#Conn</i>	ρ^{IP} <i>Mbps</i>	<i>CellTax%</i>	$CellTax_{\rho^{ATM}}$ <i>Mbps</i>	$Opt_{\rho^{ATM}}$ <i>Mbps</i>	<i>Simul.</i> <i>CellTax%</i>	<i>CellTax% diff.</i>
0.01	1	0.29	20.44%	0.349	0.413	42.56%	18.37%
0.01	20	5.750	20.44%	6.925	8.075	40.44%	16.60%
0.01	100	28.750	20.44%	34.627	41.657	44.89%	20.30%
0.1	1	0.038	20.44%	0.046	0.06	57.64%	30.89%
0.1	20	0.78	20.44%	0.939	1.130	44.93%	20.33%
0.1	100	3.900	20.44%	4.697	5.556	42.45%	18.28%

From these results, it is clear that the *CellTaxAllocation* strategy produces good results only if the buffers of the QoS-RN have the same size. In such a situation, the difference between the *CellTax* computed by the *CellTaxAllocation* strategy and the real *CellTax*, is below the 5% (see last column of Table 2). On the contrary, if the ATM buffer has only 200 cells (Table 3), such difference reaches values up to 30% (4th row of Table 3). It is worth noting that, if the mean interarrival time is 0.01 (first 3 rows of Table 3) such difference is around 20% with a minimum of 18% for 1 connection in the flow (first row of Table 3), while, if the mean interarrival time is 0.1 (last 3 rows of Table 3), such difference is much higher and it has a maximum of 31% for 1 connection in the aggregated flow (4th row of Table 3). The rationale of this behaviour comes from the fact that at the increase of the mean interarrival time and with a small number of connections in the flow, the rate variability of the flow increases and this has stronger impact on the error produced by the *CellTax* computed by the *CellTaxAllocation* strategy.

CONCLUSIONS

A novel equivalent bandwidth allocation technique has been proposed in order to manage the mapping of the QoS among heterogeneous networks. The model proposed does not need to know neither the statistical behaviour of the sources (IP packet size distribution and sources' rate, IP bandwidth allocation), nor the encapsulation formats of the employed transport technologies. Showing a promising "self-learning" property, it is able to react to traffic changes, always guaranteeing the minimal bandwidth allocation necessary for the maintenance of the service level agreement when a traffic flow is routed along subnetworks supported by different transport technologies.

REFERENCES

- [ATM00] ATM Forum Tech. Comm., "Addendum to traffic management 4.1: Differentiated UBR," July 2000.
- [ATM01] ATM Forum Tech. Comm., "ATM-MPLS Network Interworking," AF-AIC-0178.000, Aug. 2001.
- [Bocci03] M. Bocci, J. Guillet, "ATM in MPLS-based Converged Core Data Networks", IEEE Comm. Mag., Jan. 2003.
- [Byungsuk02] K. Byungsuk, I. Sebüktekin, "An integrated IP QoS architecture - Performance," IEEE Military Communications Conference MILCOM 2002, pp. 1189-1193, Oct. 2002.
- [Cass99] C. G. Cassandras, S. Lafortune. Introduction to Discrete Event Systems, Kluwer Academic Publisher, Boston, MA, 1999.
- [Cass03] C. G. Cassandras, G. Sun, C. G. Panayiotou, Y. Wardi, "Perturbation Analysis and Control of Two-Class Stochastic Fluid Models for Communication Networks," IEEE Trans. Automat. Contr., vol. 48, no. 5, pp. 23-32, May 2003.
- [Cobley98] P. F. Cobley, H. Davies, "Performance Implications of QoS Mapping in Heterogeneous Networks involving ATM," in Proc. IEEE Conf. on ATM 1998, pp. 529-535, June 1998.
- [Davoli04] F. Davoli, A. Garibbo, M. Marchese, M. Mongelli, "Equivalent Bandwidth Control for the Mapping of Quality of Service Among Heterogeneous Networks," Proc. IEEE Internat. Conf. on Commun. ICC 2004, Paris, July 2004.
- [Fischer02] J. Fischer, "PWE3: ATM Service Description", Internet draft draft-fischer-pwe3-atm-service-03, Mar. 2002.
- [Garret98] M. Garret, M. Borden, "Interoperation of Controlled-Load Service and Guaranteed Service with ATM," RFC 2381, IETF, Aug. 1998.
- [Gao01] L. Gao, "On inferring autonomous system relationship in the internet," IEEE/ACM Trans. Networking, vol. 9, no. 6, pp. 733-745, Dec. 2001.
- [Giac99] P. Giacomazzi, L. Musumeci, "Transport of IP Controlled-load service over ATM networks," IEEE Network, vol. 13, no. 1, pp. 36-47, Jan. 1999.
- [IETF99] IETF Internet Draft, "Mapping to ATM classes of service for differentiated service architecture," 1999.
- [ITU P.59] International Telecommunications Union Recommendation P.59, Artificial Conversational Speech, 1993.
- [Martini02] L. Martini, "Encapsulation Methods for Transport of ATM Cells/Frame over IP and MPLS Networks," Internet draft draft-martini-atm-encap-mpls-01.txt, June 2002.
- [Schmitt03] J. Schmitt, "Translation of Specification units between IP and ATM Quality of Service Declarations," Internat. J. Commun. Sys., vol. 16, no. 4, pp. 291-310, 2003.
- [Schwartz96] M. Schwartz, Broadband Integrated Networks, Prentice, Hall, New Jersey, 1996.
- [Wardi02] Y. Wardi, B. Melamed, C. G. Cassandras, C.G. Panayiotou, "Online IPA Gradient Estimators in Stochastic Continuous Fluid Models," J. of Optimization Theory and Applic., vol. 115, no. 2, pp. 369-405, Nov. 2002.



VoIP and Mission Critical Data Traffic over Heterogeneous Military Networks

