

A Thinning Arctic Ice Cap as Simulated by the Polar Ice Prediction System (PIPS): 2000–2008

P.G. Posey, R.H. Preller, L.F. Smedstad, and
C.N. Barron
Oceanography Division

Introduction: Even though the Arctic is one of the most hostile operational environments in the world, numerous vessels transit the Arctic regularly in summer when coastal melting opens the shortest connection between much of the North Atlantic and North Pacific. Free drifting icebergs, 24-hour seasonal darkness, sub-zero temperatures, and a lack of dependable logistical support can make Arctic operations extremely challenging for ships, aircraft, and submarines. Accurate forecasts of changing ice conditions can be applied to anticipate changing conditions and mitigate operational challenges. Applications of the second- and third-generation Polar Ice Prediction System (PIPS) are used to model and diagnose continuing thinning of Arctic ice and larger summertime ice-free areas. A significant decrease in overall ice cover has been observed in relation to the anticipated median ice extent. In 2007, the summer minimum sea ice extent in the Arctic was 40% below the minimum sea ice extents of the 1980s and more than 20% below the previous record minimum of 2005. Forecasts from the second-generation ice prediction system, PIPS 2.0, agree well with documented observations concerning the current diminishing ice cap (Fig. 1).

Current Forecasting Capabilities: The Naval Research Laboratory (NRL) is continuing to develop increasingly capable ice forecast systems tailored to fit the needs of their Navy customers. PIPS 2.0 has been producing operational Arctic forecasts for the Navy since 1996. PIPS 2.0 couples the Hibler dynamic/thermodynamic ice model¹ to the Bryan and Cox ocean model² to cover all sea ice areas in the northern hemisphere. The model uses a rotated 0.28° spherical coordinate system to avoid the problem of a numerical singularity at the pole, such that grid spacing varies from 17 to 33 km over the domain. PIPS 2.0 provides operational 72-hour forecasts of ice drift, ice thickness, and ice concentration to the National Ice Center (NIC).

PIPS Results 2000 to 2008: Evaluation of PIPS 2.0 forecasts from 2000 to 2008 reveal a slow overall decrease in Arctic ice with a minimum during the summers of 2007 and 2008. This decrease is occurring both in area of ice coverage and total ice volume. For example, in the central Arctic, ice exhibits a seasonal cycle with minimum volume in September. PIPS 2.0

indicates that this annual minimum in ice volume has undergone a 35% loss from $0.59 \times 10^9 \text{ m}^3$ in 2000 to a low of $0.38 \times 10^9 \text{ m}^3$ in 2008 (Table 1). A similar decreasing pattern also occurs in both the western and eastern Arctic regions during the same time period. PIPS 2.0 monthly ice thickness fields from September (Fig. 2) show how “ice free” the coastal regions have become each summer during the past few years (2007–2008) and how the overall pattern of ice thickness varies. Since open ocean areas absorb more solar heating than ice covered areas, the reduction of ice extent in the summer creates an overall warmer ocean that slows winter regrowth of the ice cover. This leads to thinner wintertime ice and decreases in overall ice volume during the yearly cycle as periods of cooling are not able to restore ice thickness to previously observed levels. Even though extremely low temperatures in the northern hemisphere during the winter of 2007 helped to increase the ice area visible from satellite data to a more “normal” level, especially along the northern Greenland coast, the overall Arctic ice volume was lower in 2008 due to thinner ice than in past years.

Future Capabilities in Ice Forecasting: Sufficient measurements of sea ice conditions, effective assimilation of these observations, and thorough evaluation of forecast skill and error trends are critical to improving the quality of operational models and forecasts. In continuing efforts to provide state-of-the-art capabilities for ice forecasts, NRL has developed the next-generation operational ice forecast system, PIPS 3.0. This new capability couples the Los Alamos Sea Ice Model (CICE)³ to the global Navy Coastal Ocean Model (NCOM),⁴ taking advantage of developments in modeling and assimilation over the last ten years to predict ice conditions, ice currents, temperature, and salinity at a higher resolution (5–9 km in the Arctic) and with greater accuracy. PIPS 3.0 is now producing daily 48-hour forecasts at the Naval Oceanographic Office (NAVOCEANO) and will have completed its validation tests by mid-2009.

Conclusions: The Arctic has been and will continue to be a region of strategic and operational interest. The dramatic changes seen during the last decade impact the traversal of the region by introducing changing conditions expected to increase shipping activity and thereby increase overall operational risks. A history of nowcasts and forecasts from the operational ice prediction systems developed by NRL can be used to construct a baseline of ice conditions, cycles, and trends to enable more robust assessment of the extent and environmental impacts of Arctic ice changes. As higher-resolution forecast systems are developed, more accurate and detailed forecasts will

Report Documentation Page

Form Approved
OMB No. 0704-0188

Public reporting burden for the collection of information is estimated to average 1 hour per response, including the time for reviewing instructions, searching existing data sources, gathering and maintaining the data needed, and completing and reviewing the collection of information. Send comments regarding this burden estimate or any other aspect of this collection of information, including suggestions for reducing this burden, to Washington Headquarters Services, Directorate for Information Operations and Reports, 1215 Jefferson Davis Highway, Suite 1204, Arlington VA 22202-4302. Respondents should be aware that notwithstanding any other provision of law, no person shall be subject to a penalty for failing to comply with a collection of information if it does not display a currently valid OMB control number.

1. REPORT DATE 2009		2. REPORT TYPE		3. DATES COVERED 00-00-2009 to 00-00-2009	
4. TITLE AND SUBTITLE A Thinning Arctic Ice Cap as Simulated by the Polar Ice Prediction System (PIPS): 2000-2008				5a. CONTRACT NUMBER	
				5b. GRANT NUMBER	
				5c. PROGRAM ELEMENT NUMBER	
6. AUTHOR(S)				5d. PROJECT NUMBER	
				5e. TASK NUMBER	
				5f. WORK UNIT NUMBER	
7. PERFORMING ORGANIZATION NAME(S) AND ADDRESS(ES) Naval Research Laboratory, Oceanography Division, 4555 Overlook Ave SW, Washington, DC, 20375-5337				8. PERFORMING ORGANIZATION REPORT NUMBER	
9. SPONSORING/MONITORING AGENCY NAME(S) AND ADDRESS(ES)				10. SPONSOR/MONITOR'S ACRONYM(S)	
				11. SPONSOR/MONITOR'S REPORT NUMBER(S)	
12. DISTRIBUTION/AVAILABILITY STATEMENT Approved for public release; distribution unlimited					
13. SUPPLEMENTARY NOTES					
14. ABSTRACT					
15. SUBJECT TERMS					
16. SECURITY CLASSIFICATION OF:			17. LIMITATION OF ABSTRACT	18. NUMBER OF PAGES	19a. NAME OF RESPONSIBLE PERSON
a. REPORT unclassified	b. ABSTRACT unclassified	c. THIS PAGE unclassified			

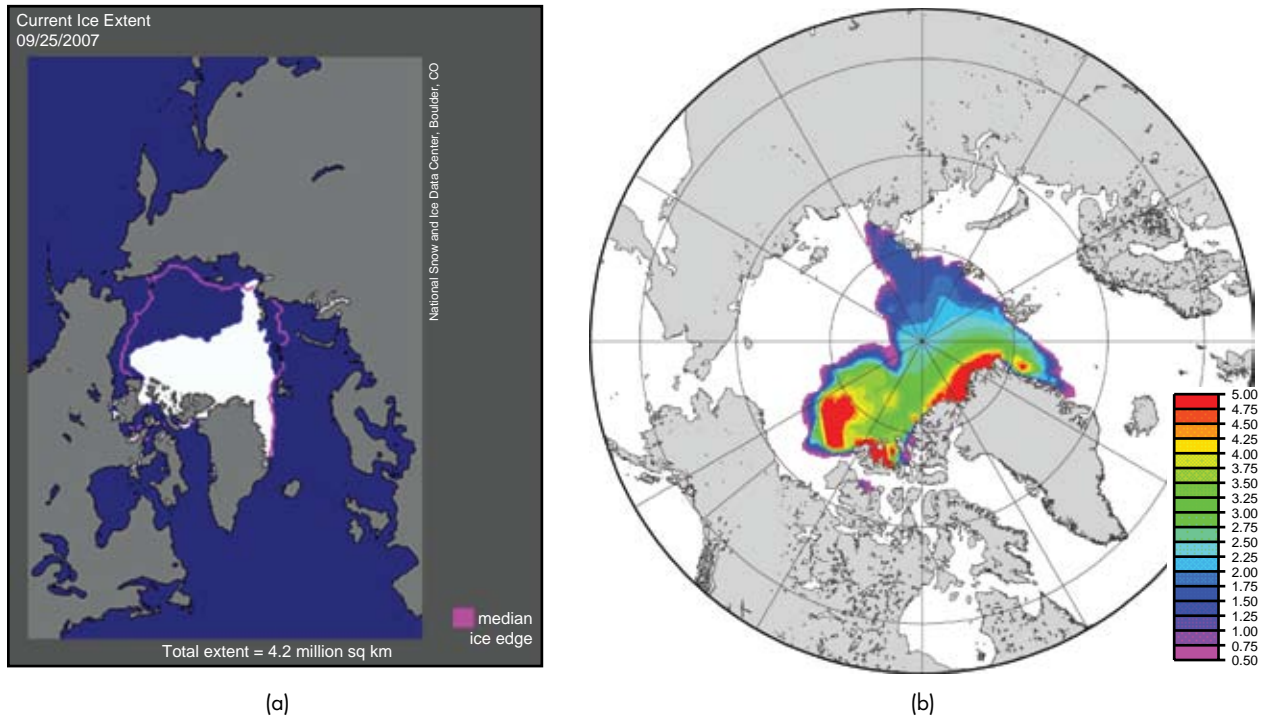


FIGURE 1
 (a) September 2007 Arctic sea ice extent (white), compared to the September median ice extent (pink line) calculated from 1979 to 2000 (Source: National Snow and Ice Data Center) compared to (b) the PIPS 2.0 monthly mean September ice thickness (m) for 2007.

TABLE 1 — PIPS 2.0 Yearly Maximum and Minimum Values of Total Ice Volume for the Central Arctic

Year	Total Central Arctic Ice Volume $\times 10^9 \text{ m}^3$			
	Month	Maximum Value	Minimum Month	Value
2000	May	0.90	Sep	0.59
2001	May	0.93	Sep	0.69
2002	May	0.99	Sep	0.75
2003	Apr	0.95	Sep	0.58
2004	May	0.91	Sep	0.58
2005	Apr	0.93	Sep	0.62
2006	May	0.85	Sep	0.52
2007	May	0.86	Sep	0.49
2008	Mar	0.67	Sep	0.38

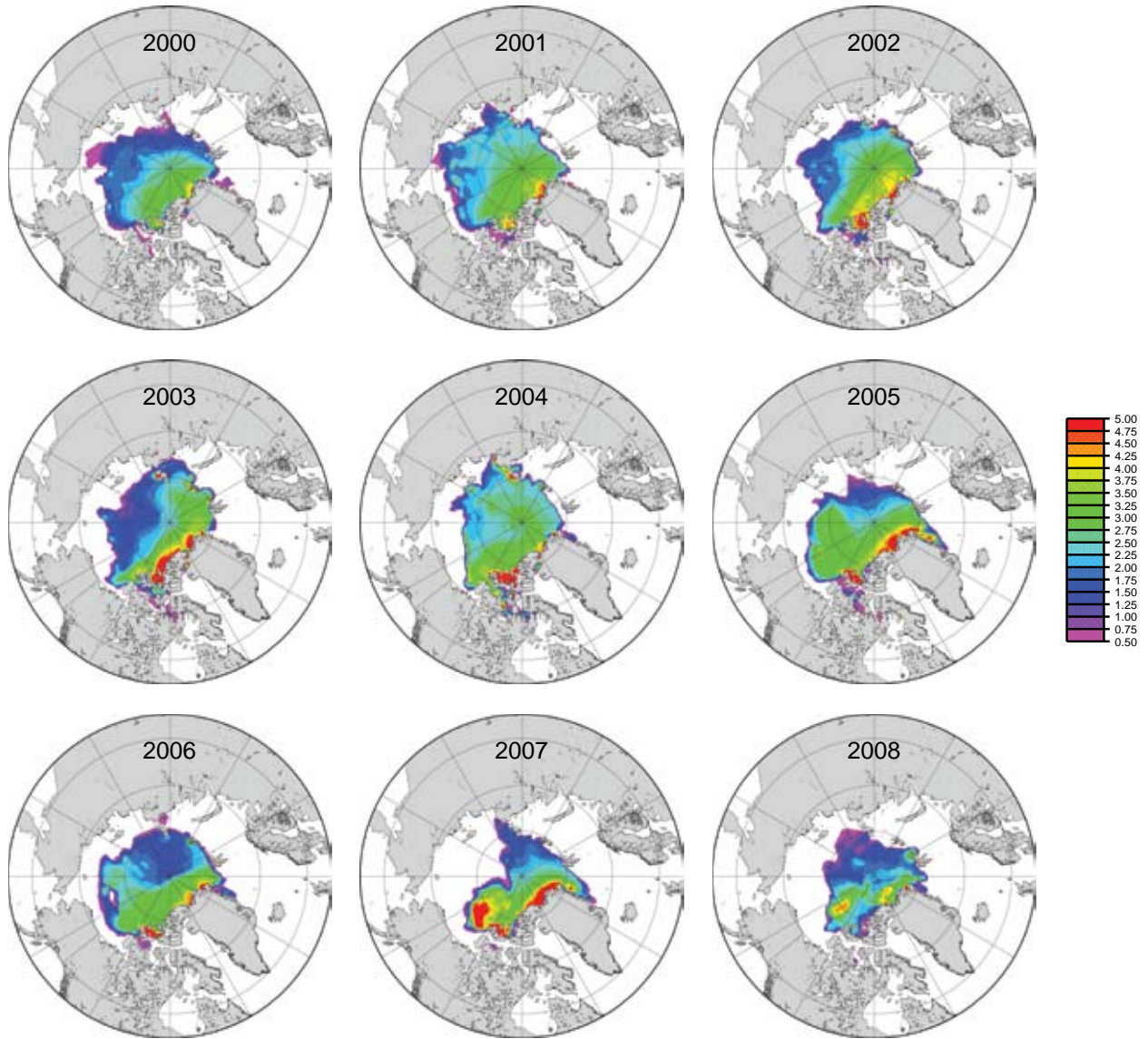


FIGURE 2
PIPS 2.0 September monthly mean ice thickness (m) from 2000 to 2008.

become available for use in predicting, understanding, and adapting to changing Arctic ice conditions.

Acknowledgments: The authors would like to thank Mr. Michael Phelps of Jacobs Engineering for archiving and plotting the ice forecast products. For historical PIPS 2.0 model forecasts see <http://www730/pips2>. This work is made possible through the support of the Office of Naval Research.

[Sponsored by ONR]

References

- ¹W.D. Hibler, "A Dynamic Thermodynamic Sea Ice Model," *J. Phys. Oceanogr.* **9**, 815–864 (1979).
- ²M.D. Cox, "A Primitive Equation, 3-Dimensional Model of the Ocean," Geophysical Fluid Dynamics Laboratory Ocean Group Technical Report No. 1 (Princeton, NJ, 1984).
- ³E.C. Hunke and J.K. Dukowicz, "An Elastic-Viscous-Plastic Model for Sea Ice Dynamics," *J. Phys. Oceanogr.* **27**, 1849–1867 (1997).
- ⁴C.N. Barron, A.B. Kara, P.J. Martin, R.C. Rhodes, and L.F. Smedstad, "Formulation, Implementation and Examination of Vertical Coordinate Choices in the Global Navy Coastal Ocean Model (NCOM)," *Ocean Modelling* **11**(3-4), 347–375 (2006), doi:10.1016/j.ocenmod.2005.01.004.