

Increased Underwater Optical Imaging Performance Via Multiple Autonomous Underwater Vehicles

Jules S. Jaffe

Scripps Institution of Oceanography

University of California, San Diego

La Jolla, CA 92093-0238

phone: (858) 534-6101 fax: (858) 534-7641 email: jules@mpl.ucsd.edu

Award Number: N00014-07-1-0317

<http://jaffeweb.ucsd.edu/>

LONG-TERM GOALS

The major long-term scientific goal of this program is to explore techniques for increasing the performance of underwater optical imaging systems.

OBJECTIVES

The main objective of this project is to explore the possibility of using Multiple Autonomous Underwater Vehicles for increasing the performance of underwater optical imaging systems. The main objective, in this context, is to simulate the potential benefits that multiple vehicles can have in increasing the range, imaging footprint, and potentially 3-dimensional applications that can be afforded using this new approach. This report details the Year 1 efforts that were focused on performing computer simulations in order to test a simple implementation of the idea.

APPROACH

In order to explore the utility of the MAUVIO concept we have been performing underwater computer optical image simulations. Over the last decades, we have used an underwater optical imaging program entitled UNCLES in order to simulate the output from a proposed configuration of lights and cameras. The program has, as input, the 3-dimensional locations of lights and cameras and their pointing angles in a Eulerian frame of reference. The lights are considered to be monochromatic, however, wide band illumination can be determined via repeated simulations at different narrow bands with the concomitant environmental characteristics. The lighting pattern can also be varied to correspond to either a narrow sheet like beam or a wide beam with arbitrary theta and phi beam widths being specified by an arbitrary radial dependent intensity pattern. The camera description includes the f# of the camera lens in addition to the focal length and the number of resolution elements. A reflectance map is input with an arbitrary reflectance profile that can be used to simulate either interesting images or a range of contrast values that the user expects to encounter in real situations.

Here we demonstrate the advantages of the MAUVIO concept via the comparison of two configurations of lights and cameras. One configuration corresponds to a single AUV where the camera is mounted on one end and the lights are mounted on the other end. The other configuration corresponds to the same camera location, however this time the illumination is provided by an AUV that is located closer to the target with a broad illumination pattern. Figure 1 shows the geometric

Report Documentation Page

Form Approved
OMB No. 0704-0188

Public reporting burden for the collection of information is estimated to average 1 hour per response, including the time for reviewing instructions, searching existing data sources, gathering and maintaining the data needed, and completing and reviewing the collection of information. Send comments regarding this burden estimate or any other aspect of this collection of information, including suggestions for reducing this burden, to Washington Headquarters Services, Directorate for Information Operations and Reports, 1215 Jefferson Davis Highway, Suite 1204, Arlington VA 22202-4302. Respondents should be aware that notwithstanding any other provision of law, no person shall be subject to a penalty for failing to comply with a collection of information if it does not display a currently valid OMB control number.

1. REPORT DATE 2006		2. REPORT TYPE N/A		3. DATES COVERED -	
4. TITLE AND SUBTITLE Increased Underwater Optical Imaging Performance Via Multiple Autonomous Underwater Vehicles				5a. CONTRACT NUMBER	
				5b. GRANT NUMBER	
				5c. PROGRAM ELEMENT NUMBER	
6. AUTHOR(S)				5d. PROJECT NUMBER	
				5e. TASK NUMBER	
				5f. WORK UNIT NUMBER	
7. PERFORMING ORGANIZATION NAME(S) AND ADDRESS(ES) Scripps Institution of Oceanography University of California, San Diego La Jolla, CA 92093-0238				8. PERFORMING ORGANIZATION REPORT NUMBER	
9. SPONSORING/MONITORING AGENCY NAME(S) AND ADDRESS(ES)				10. SPONSOR/MONITOR'S ACRONYM(S)	
				11. SPONSOR/MONITOR'S REPORT NUMBER(S)	
12. DISTRIBUTION/AVAILABILITY STATEMENT Approved for public release, distribution unlimited					
13. SUPPLEMENTARY NOTES The original document contains color images.					
14. ABSTRACT					
15. SUBJECT TERMS					
16. SECURITY CLASSIFICATION OF:			17. LIMITATION OF ABSTRACT	18. NUMBER OF PAGES	19a. NAME OF RESPONSIBLE PERSON
a. REPORT unclassified	b. ABSTRACT unclassified	c. THIS PAGE unclassified			

location of the devices including the beam widths of the light sources and the size of the reflectance map.

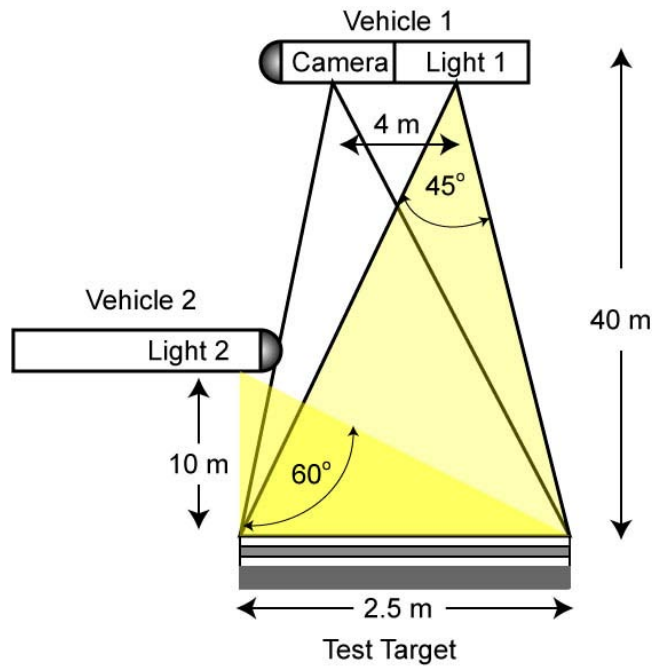


Figure 1. The geometry used to compare the potential performance increase possible with multiple vehicles. Shown are a single camera and 2 light configurations to be illuminated separately.

RESULTS

Input to the UNCLES program consists of both environmental parameters (IOPs) in addition to the needed AOPs (PSF) that is appropriate for a given underwater environment. In this example a moderately good imaging environment was selected that corresponds to coastal imaging. Values for a, b, and c were chosen to be .075, .075 and .15 inverse meters. Taking the reciprocal of the total attenuation coefficient c corresponds to the measure of total attenuation length, alternatively viewed as the distance over which 1/3 rd of the light penetrates without either scatter or attenuation. In this case, an attenuation length corresponds to 6.67 meters.

A target reflectance map was used that consisted of several horizontal lines with varying widths. A target size of 2.5 meters squared was chosen as well. The camera location was fixed for the two sets of simulations at an altitude of 40 m, corresponding to a distance of almost 6 attenuation lengths from the reflectance map to the camera. This distance would ordinarily be considered to outside the realm of what a traditional underwater imaging system might be capable of. However, as shown below, the new type of configuration seems to hold promise for achieving superior acquisition of images over ranges that were previously thought to be unobtainable from these traditional camera light configurations.

Figure 2 and 3 show a set of images collected with the system for the two different configurations. Figure 3, corresponding to both camera and lights located on the same vehicle, demonstrates that, as

expected, the small baseline and the long two-way distance for light travel renders the image useless. As shown, the image consists mostly of backscatter that has no information about the sea floor or target itself. Figure 3, taken from the case where the source is placed on a lower vehicle demonstrates that a much clearer image is available via illuminating the target from this closer range

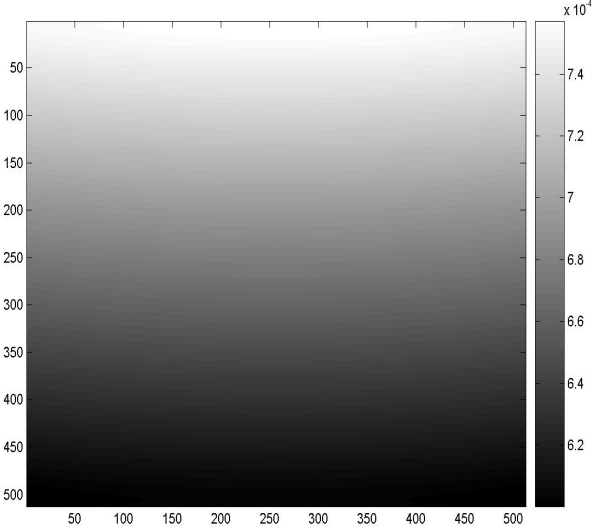


Figure 2. The predicted UNCLES image acquired by the camera in the geometry of Figure 2 when illumination is due to light source 1.

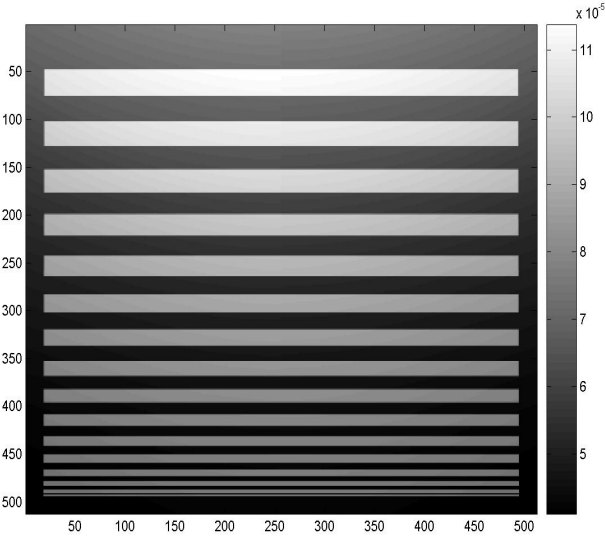


Figure 3. The predicted UCNLES image acquired by the camera in the geometry of Figure 2 when illumination is due to light source 2.

A more thorough analysis of the images considers not only their appearance but also the relative strengths of the different components that contribute to the image. It is helpful to look at these ratios because in some situations the use of high dynamic range recorders can increase image appearance via digital signal processing techniques. The UNCLES program separates the observed image into a number of additive components. The direct component is the light that has been reflected from the

target that does not incur any additional scatter on its way back to the camera. This is the primary signal component in underwater optical imaging. The blur component consists of the light that incurs forward scatter after reflection from the target that is subsequently imaged. In some cases (mainly shorter distances) this component contains substantial image resolution and can be considered as signal. Here, the target is at such a great range from the camera that inspection of this component led to the conclusion that this component contains no information. Finally, the backscatter component is the light that is scattered from the volume with no contact or information about the target. Table 1 displays the maximum value of these components for the two imaging scenarios.

Table 1. The image components due to both of the source locations

Component	Light1	Light2
Direct	$2 \cdot 10^{-7}$	$4 \cdot 10^{-5}$
Blur	$1 \cdot 10^{-7}$	$1.5 \cdot 10^{-5}$
Backscatter	$1 \cdot 10^{-4}$	$6 \cdot 10^{-5}$

Inspection of the table reveals that when the source and receiver are located on the same vehicle the backscatter component is almost 3 orders of magnitude higher than the signal (the direct component). On the other hand, when the source and receiver are located on different vehicles the direct component is almost as large as that due to both the blur and the backscatter. This leads to a very clear image as demonstrated. Although these results are not inconsistent with previous knowledge of underwater optical imaging and the advantages of different configurations it is clear that the arbitrary positioning of sources and receivers afforded by AUVs opens a new realm of possibilities. We note that this vertical separation would be difficult to achieve for any vehicle.