

**ABS Consulting**

AN ABS GROUP COMPANY

# **Design of the China Lake NAWS Fuze Test Facility**

***Presenter: Ben F. Harrison, P.E.  
Co-Author: Matthew Kraemer, P.E.***

# Report Documentation Page

*Form Approved*  
*OMB No. 0704-0188*

Public reporting burden for the collection of information is estimated to average 1 hour per response, including the time for reviewing instructions, searching existing data sources, gathering and maintaining the data needed, and completing and reviewing the collection of information. Send comments regarding this burden estimate or any other aspect of this collection of information, including suggestions for reducing this burden, to Washington Headquarters Services, Directorate for Information Operations and Reports, 1215 Jefferson Davis Highway, Suite 1204, Arlington VA 22202-4302. Respondents should be aware that notwithstanding any other provision of law, no person shall be subject to a penalty for failing to comply with a collection of information if it does not display a currently valid OMB control number.

1. REPORT DATE <b>JUL 2010</b>	2. REPORT TYPE <b>N/A</b>	3. DATES COVERED <b>-</b>	
4. TITLE AND SUBTITLE <b>Design of the China Lake NAWS Fuze Test Facility</b>		5a. CONTRACT NUMBER	
		5b. GRANT NUMBER	
		5c. PROGRAM ELEMENT NUMBER	
6. AUTHOR(S)		5d. PROJECT NUMBER	
		5e. TASK NUMBER	
		5f. WORK UNIT NUMBER	
7. PERFORMING ORGANIZATION NAME(S) AND ADDRESS(ES) <b>ABS Consulting</b>		8. PERFORMING ORGANIZATION REPORT NUMBER	
9. SPONSORING/MONITORING AGENCY NAME(S) AND ADDRESS(ES)		10. SPONSOR/MONITOR'S ACRONYM(S)	
		11. SPONSOR/MONITOR'S REPORT NUMBER(S)	
12. DISTRIBUTION/AVAILABILITY STATEMENT <b>Approved for public release, distribution unlimited</b>			
13. SUPPLEMENTARY NOTES <b>See also ADM002313. Department of Defense Explosives Safety Board Seminar (34th) held in Portland, Oregon on 13-15 July 2010, The original document contains color images.</b>			
14. ABSTRACT			
15. SUBJECT TERMS			
16. SECURITY CLASSIFICATION OF:			17. LIMITATION OF ABSTRACT
a. REPORT <b>unclassified</b>	b. ABSTRACT <b>unclassified</b>	c. THIS PAGE <b>unclassified</b>	<b>SAR</b>
			18. NUMBER OF PAGES <b>18</b>
			19a. NAME OF RESPONSIBLE PERSON

# Acknowledgements

- Quality testing of Military Fuses
- Design Build Team
  - Architect: Mosher Drew Watson Ferguson



- Contractor: Soltek Pacific Construction



**SOLTEK PACIFIC**  
CONSTRUCTION

- Blast Design and ESQD: ABS Consulting

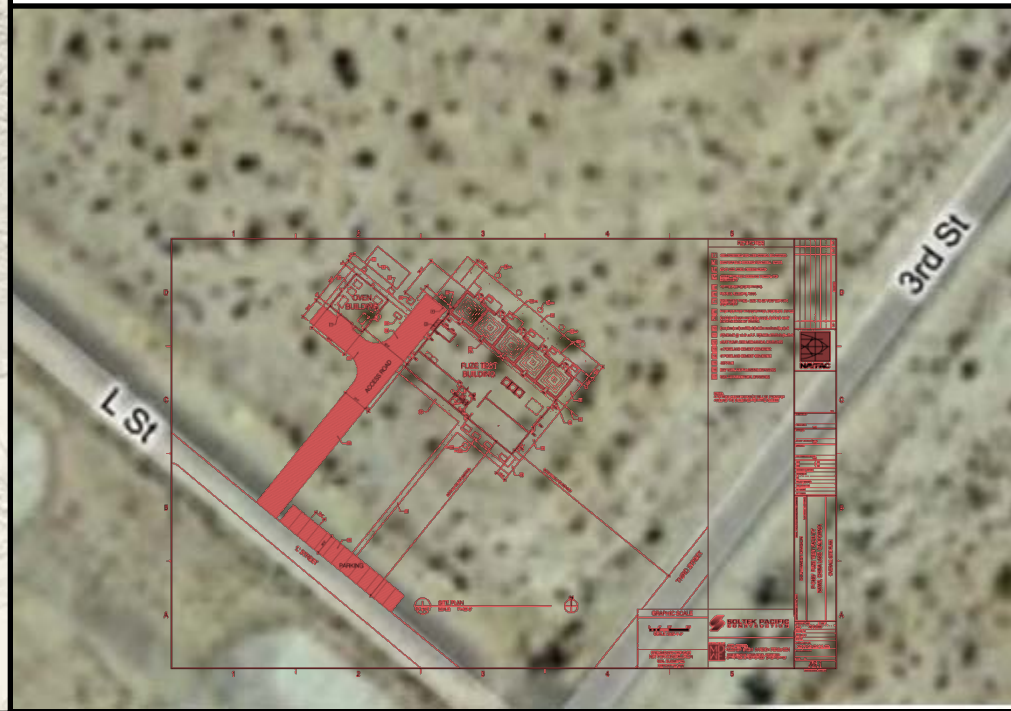
**ABS Consulting**

AN ABS GROUP COMPANY

- NAVFAC Engineering Service Center

# Background

- China Lake NAWS  
– Ridgecrest, CA



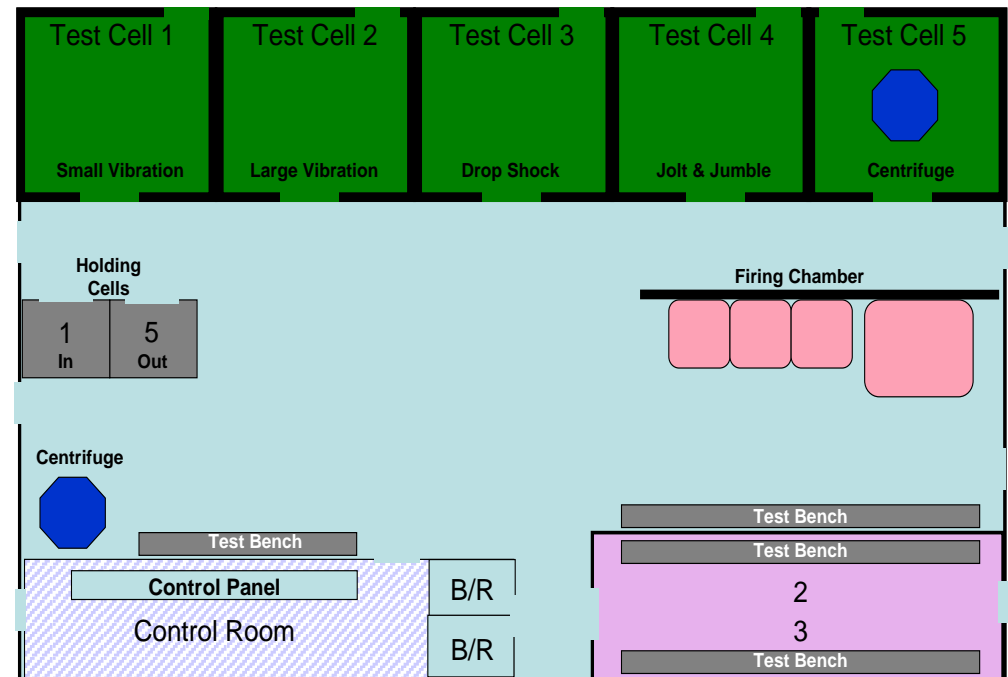
# Objectives

- Design Remote Test Cells to contain effects of accidental detonation
  - Net Explosive Weight =  $10 \text{ lb}_{\text{TNT}}$
  - Minimum Standoff = 10 feet
- Personnel Protection from accidental detonation Remote Test Cell for concurrent operations:
  - Overpressure below 2.3 psi
  - Thermal flux below  $0.3 \text{ cal/cm}^2/\text{sec}$
  - Hazardous fragment energy below  $58 \text{ ft} \cdot \text{lb}$
- Determine allowable charge weight at required reduced standoffs:
  - 7 feet
  - 5 feet
  - 3 feet



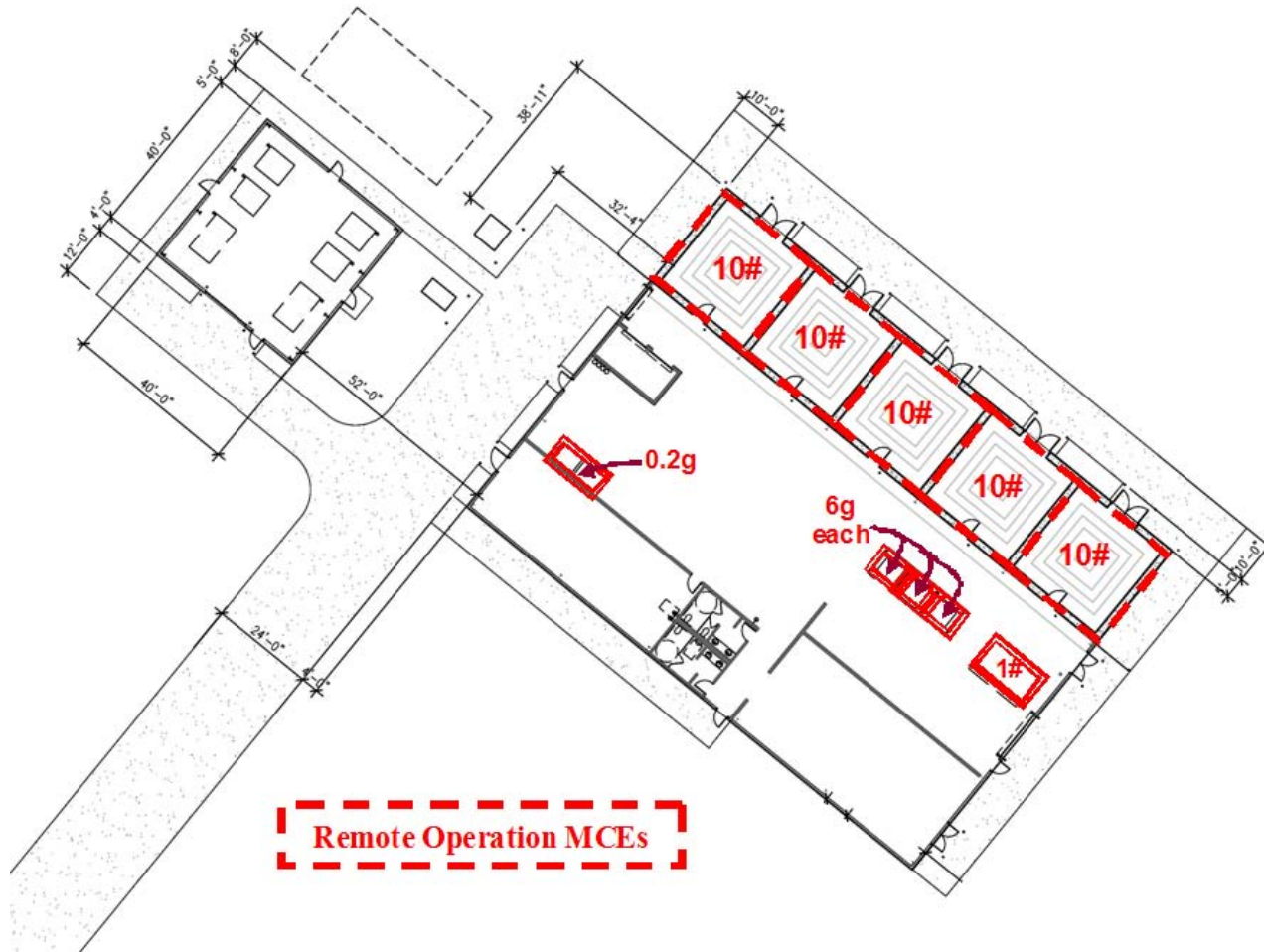
# Fuze Test Building Work Areas

- Fuze Test Building (HD 1.1)
  - Remote Test Cells
  - Holding Cells
  - Test Benches and 2 gram Centrifuge
  - Firing Chamber
  - Control Room

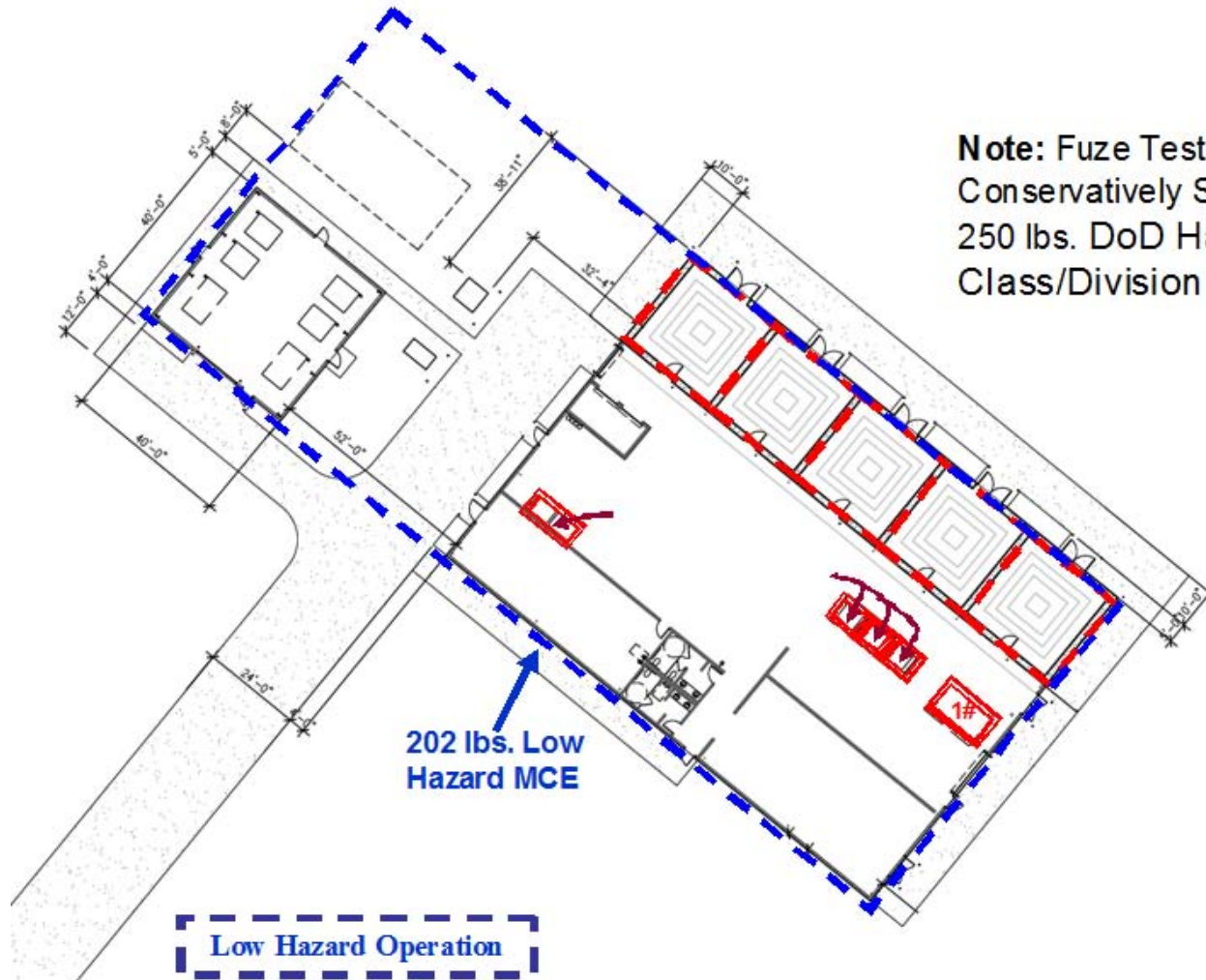




# Remote Operations MCEs



# Low Hazard MCEs



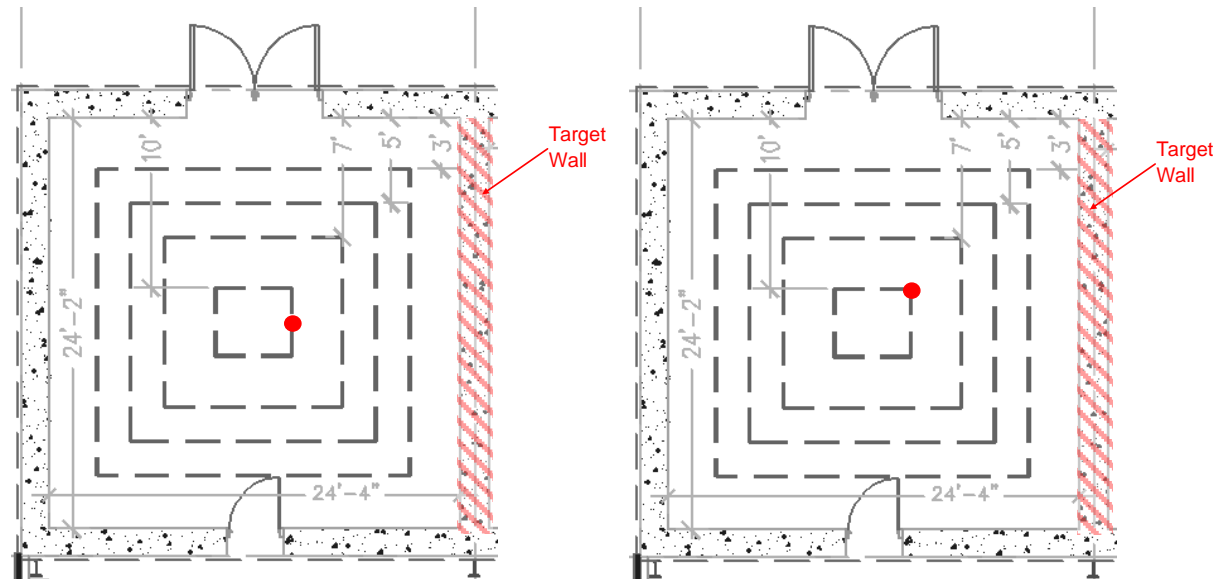
**Note:** Fuze Test Facility  
Conservatively Sited For  
250 lbs. DoD Hazard  
Class/Division (HD) 1.1.



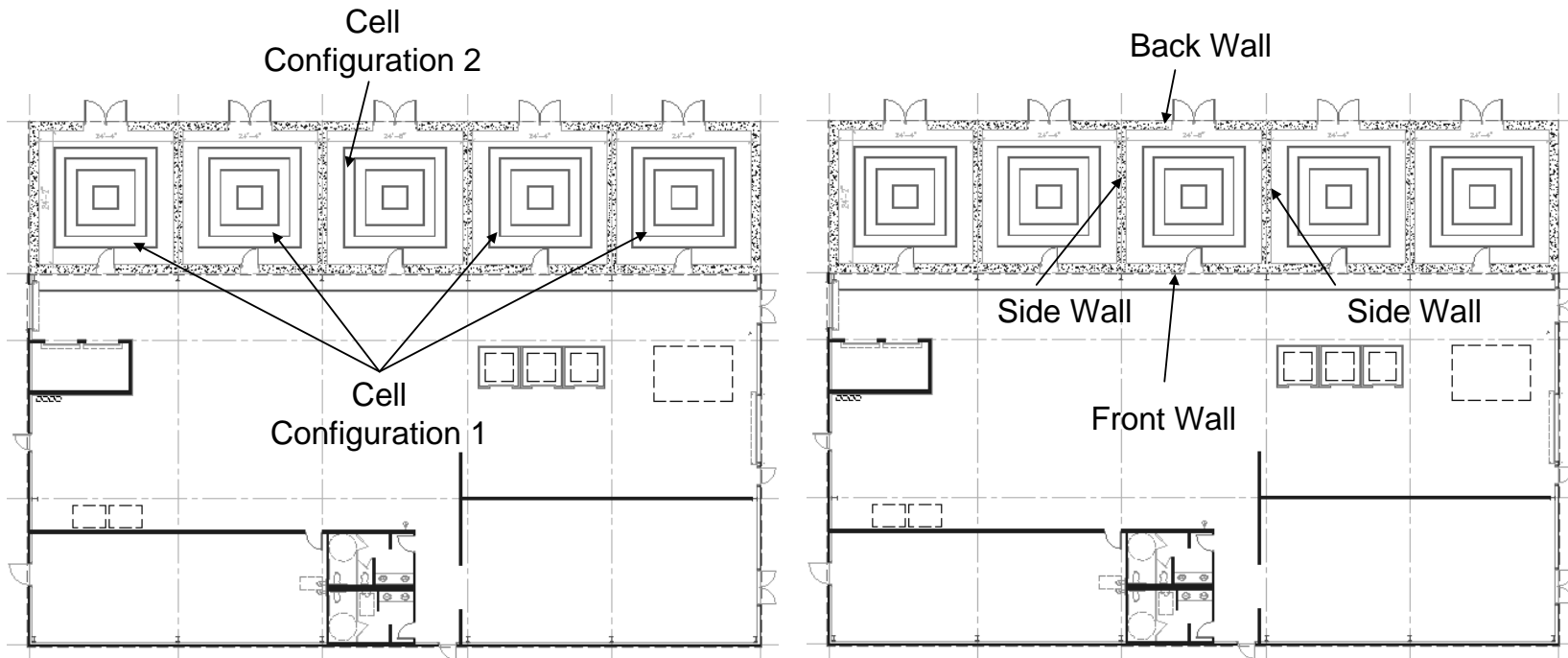
# Remote Test Cell Load Prediction

- Software
  - SHOCK
  - FRANG
- Operating Heights
  - 2 feet
  - 8 feet
  - 16 feet
- Reduced Blast Load Area

Design Basis Standoff	Reduced Area Function	Reduced Area Utilized
10 ft.	3 * Slab thickness	5 ft. x 5 ft.
7 ft.	3 * Slab thickness	5 ft. x 5 ft.
5 ft.	3 * Slab thickness	5 ft. x 5 ft.
3 ft.	Standoff	3 ft. x 3 ft.



# Remote Test Cell Predicted Response



## Test Cell Response

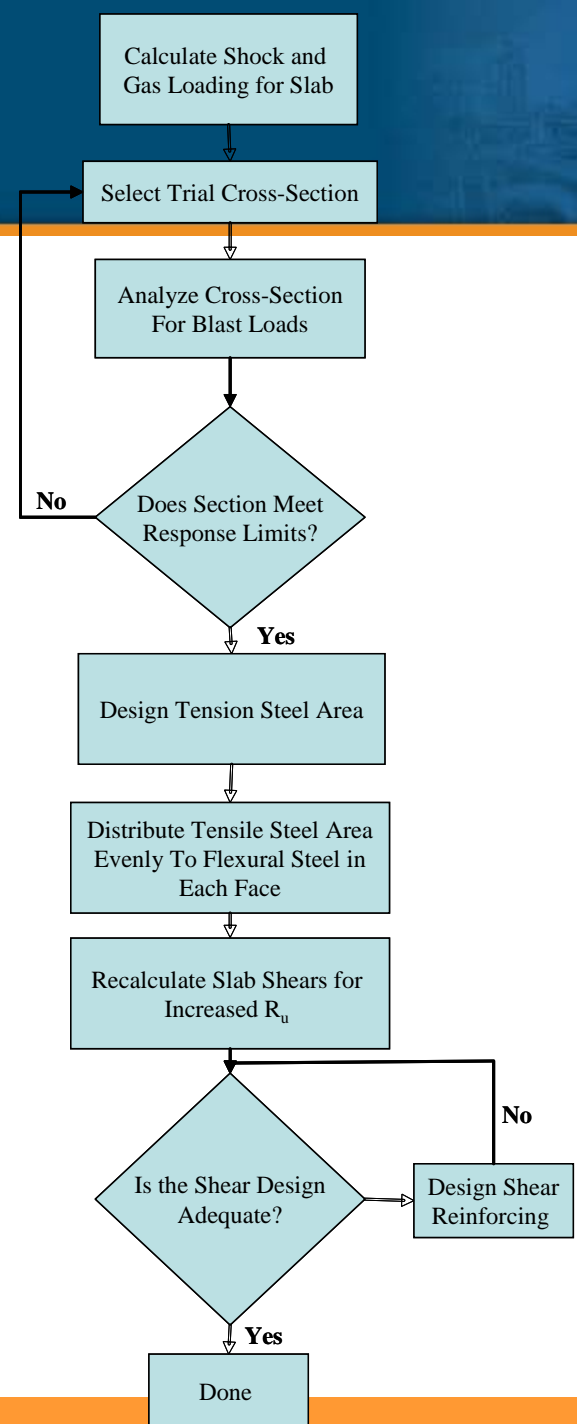
Component	Response Limits			Predicted Response		
	Ductility ( $\mu$ )	Rotation ( $\theta$ )	Deflection $\Delta_{\text{limit}}$	Ductility ( $\mu$ )	Rotation ( $\theta$ )	Deflection $\Delta_{\text{max}}$ (in)
Side Wall	-	2 deg.	5.0 in.	-	0.4 deg.	1.0 in.
Front Wall	-	2 deg.	2.9 in.	-	1.37 deg.	1.98 in.
Back Wall	-	2 deg.	3.0 in.	-	0.95 deg.	1.45 in.
Roof	-	2 deg.	5.0 in.	-	0.37 deg.	0.93 in.
Personnel Door	10	2 deg.	0.63 in.	0.6	1.0 deg.	0.32 in.

# Structural Design Assumptions

- Concrete strength –  $f_c' = 4,000$  psi
- Reinforcement strength –  $f_y = 60,000$  psi
- Concrete cover – 2 in. on each face
- Dynamic Increase Factor (DIF)
  - Concrete – Calculated based on strain rate
  - Reinforcing Steel – Calculated based on strain rate
  - Personnel Door – Calculated based on strain rate
- Response Criteria
  - Slabs – 2 degrees rotation - Category 1 response with stirrups
- Steel Blast Doors – 2 degrees rotation or a ductility of 10

# Structural Capacity

- Structural Capacity – Engineering Analysis
  - Flexural Response
  - Tension
  - Diagonal Tension Shear
  - Direct Shear
  - Factor of Safety for Design
    - 1.2 on N.E.W.



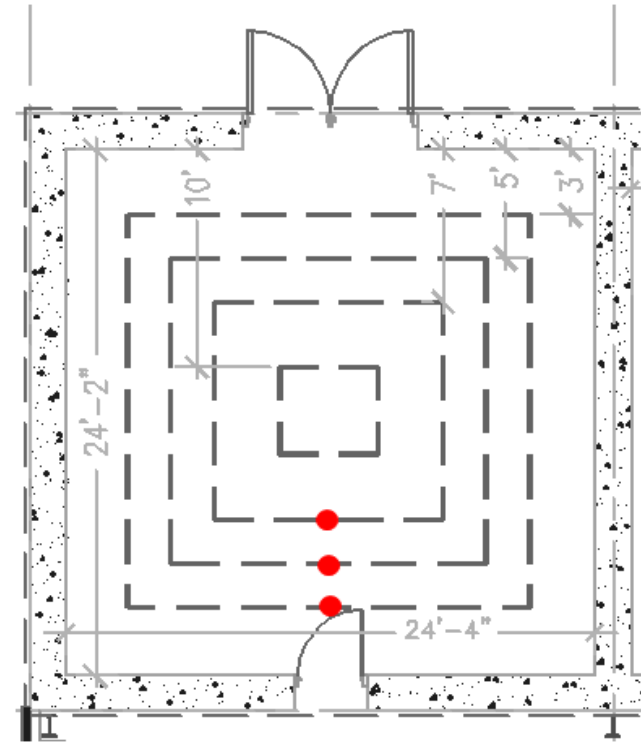
# Remote Test Cell Design Summary

- Thickness of cross-section is 20 inches, typical
- Minimum concrete compressive strength 4,000 psi
- Reinforcing
  - #5 bars, each face, each way (horizontal and vertical) at 8 inches on center
  - 2 inch concrete cover, both faces
  - #4 90-135 stirrups at 8 inches on center, each way.
  - #6 diagonal bars, no corner haunches
- The cubicle walls were securely attached at the floors and edges to adjoining slabs through development of reinforcement into the adjacent slabs. Adjacent slabs are capable of resisting the full supported moment.
- The walls must provide personnel protection from remote operations.

# Reduced Standoff Ratings

- Design Basis Requirements
  - Structural Response
  - Concrete Spalling
  - Scaled Distance –  $3 \text{ ft/lb}_{\text{TNT}}^{1/3}$

Minimum Required Standoff	Allowable Charge Weight - $\text{lb}_{\text{TNT}}$
7 feet	7.5
5 feet	3.9
3 feet	0.8



# Closure

- The objectives of the design of the China Lake Fuze Test Facility included:
  - Design Remote Test Cells to contain effects of accidental detonation
    - Net Explosive Weight =  $10 \text{ lb}_{\text{TNT}}$
    - Minimum Standoff = 10 feet
    - Reduced Standoffs of 7 feet, 5 feet and 3 feet were evaluated
  - Personnel Protection from accidental detonation Remote Test Cell for concurrent operations:
    - Overpressure below 2.3 psi
    - Thermal flux below  $0.3 \text{ cal/cm}^2/\text{sec}$
    - Hazardous fragment energy below  $58 \text{ ft} \cdot \text{lbf}$
- DDESB Approval Obtained and the Facility is Currently Under Construction

# Questions?

