

Initial Observation of High Resolution Velocity Profile and Stratification in the Sunda Strait

PI: R. Dwi Susanto
Lamont-Doherty Earth Observatory of
Columbia University
61 Route 9W, Palisades, NY 10964
Phone: 845-365-8545 fax: 845-365-8157 e-mail: dwi@ldeo.columbia.edu

Award Number: N00014-08-1-0618

LONG-TERM GOALS

This pioneering work has main goal of observing and determining the dynamics of controlling circulation in the Sunda Strait – a strategic passage for marine safety and international shipping. (Figure 1).

OBJECTIVES

The main objectives are to:

- (1) measure the magnitude and variability of Sunda Strait flow by deploying one full Barny Sentinel ADCP to determine the volume transport and its associated heat-freshwater fluxes;
- (2) measure vertical stratification of the Sunda Strait and to study its effects due to rough topography/bathymetry, monsoon, and South Java Current.
- (3) test the hypothesis whether coastally trapped Kelvin waves could penetrate the Sunda Strait. If it does, how it affects the Strait stratification, mixing, and its interaction with water from the Java Sea.
- (4) determine effects of strait dynamics of fish distribution and abundance.

APPROACH

- ✓ Having international collaborative research among scientists from Lamont Doherty Earth Observatory (LDEO) United States, and Agency for Marine and Fisheries Research (BRKP) Indonesia and First Institute of Oceanography (FIO), China.
- ✓ Deploy two bottom mount ADCPs in the choaked point of the Sunda Strait
- ✓ Take CTD casts and water samples at various locations within the straits and underway fishfinder as well as ADCP.

WORK COMPLETED

- Implementation agreement among BRKP (Indonesia), FIO (China) and LDEO (USA) has been signed in August-September 2008. The first cruise will be carried out in the end of October 2008 using R/V Baruna Jaya VIII operated by Indonesian Science Institute.

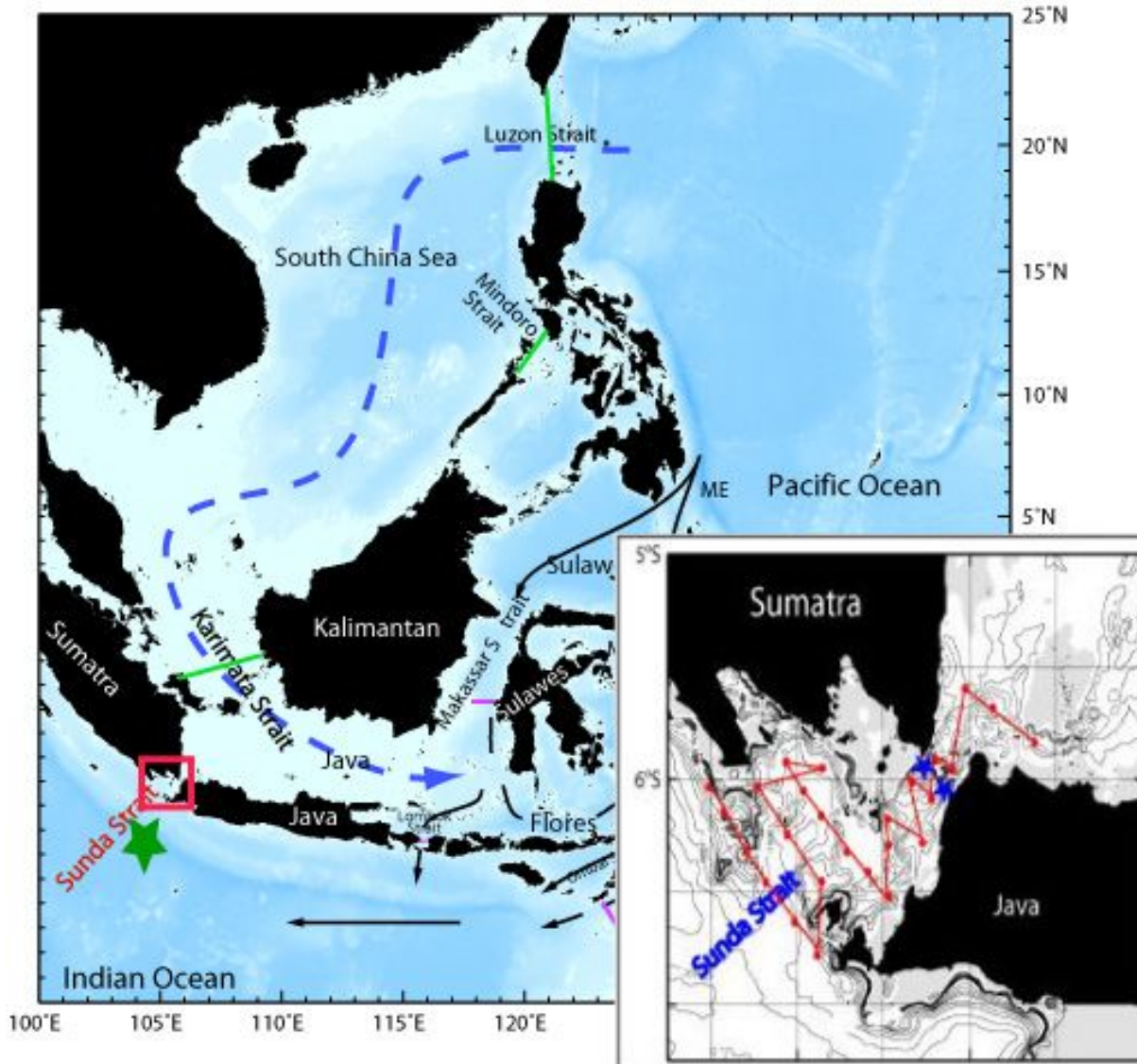
Report Documentation Page

Form Approved
OMB No. 0704-0188

Public reporting burden for the collection of information is estimated to average 1 hour per response, including the time for reviewing instructions, searching existing data sources, gathering and maintaining the data needed, and completing and reviewing the collection of information. Send comments regarding this burden estimate or any other aspect of this collection of information, including suggestions for reducing this burden, to Washington Headquarters Services, Directorate for Information Operations and Reports, 1215 Jefferson Davis Highway, Suite 1204, Arlington VA 22202-4302. Respondents should be aware that notwithstanding any other provision of law, no person shall be subject to a penalty for failing to comply with a collection of information if it does not display a currently valid OMB control number.

1. REPORT DATE 30 SEP 2008	2. REPORT TYPE Annual	3. DATES COVERED 00-00-2008 to 00-00-2008			
4. TITLE AND SUBTITLE Initial Observation Of High Resolution Velocity Profile And Stratification In The Sunda Strait		5a. CONTRACT NUMBER			
		5b. GRANT NUMBER			
		5c. PROGRAM ELEMENT NUMBER			
6. AUTHOR(S)		5d. PROJECT NUMBER			
		5e. TASK NUMBER			
		5f. WORK UNIT NUMBER			
7. PERFORMING ORGANIZATION NAME(S) AND ADDRESS(ES) Columbia University, Lamont-Doherty Earth Observatory, 61 Route 9W, Palisades, NY, 10964		8. PERFORMING ORGANIZATION REPORT NUMBER			
9. SPONSORING/MONITORING AGENCY NAME(S) AND ADDRESS(ES)		10. SPONSOR/MONITOR'S ACRONYM(S)			
		11. SPONSOR/MONITOR'S REPORT NUMBER(S)			
12. DISTRIBUTION/AVAILABILITY STATEMENT Approved for public release; distribution unlimited					
13. SUPPLEMENTARY NOTES code 1 only					
14. ABSTRACT This pioneering work has main goal of observing and determining the dynamics of controlling circulation in the Sunda Strait ? a strategic passage for marine safety and international shipping.					
15. SUBJECT TERMS					
16. SECURITY CLASSIFICATION OF:			17. LIMITATION OF ABSTRACT Same as Report (SAR)	18. NUMBER OF PAGES 3	19a. NAME OF RESPONSIBLE PERSON
a. REPORT unclassified	b. ABSTRACT unclassified	c. THIS PAGE unclassified			

- All instruments have been bought and on the way to Jakarta-Indonesia.
- Barny sentinel ordered from Sielco Italy is being tested before it will be sent to Jakarta in the first week of October 2008.
- Security and research clearances from the Indonesian government are being processed by our collaborator from Indonesia (BRKP).



[Figure 1. Indonesian throughflow pathways: Pacific-Makassar Strait-Indian Ocean and Pacific-Luzon Strait-South China Sea-Java Sea. Sunda Strait (red box and inset) connects Java Sea and Indian Ocean. Blue stars (inset) are plan for mooring locations in the Sunda Strait and red line is plan for ship track and red-dots are CTD stations. Green star is Weidong (FIO) upwelling mooring]

RESULTS

- Since the grant just began this year, no scientific results yet.

IMPACT/IMPLICATIONS

Understanding dynamics of Sunda Strait has both scientific and economic benefits i.e. spatial and temporal variability of fish abundances, marine safety and environment and shipping. The Sunda Strait, which connects tropical Indian Ocean and Java Sea (Figure 1), is located between Java and Sumatra centered at 6.0°S and 105.0°E. An active growing volcano “*anak Kratatau*”, which is located in the middle of the Strait, adds to the complexity of the rough topography. The Strait provides the first gap of series of Indonesian islands from Sumatra to Timor, where equatorial Kelvin waves from the tropical Indian Ocean propagate eastward along southern coast of this island series and seasonal upwelling along the southern Java-Sumatra (Arief Murray, 1996; Sprintall et al., 2000; Susanto et al., 2001). Whether these waves could enter the Sunda Strait is still unknown. Southern Java-Sumatra is also center of interannual variability associated with Indian Ocean Dipole (IOD). Hence, dynamics of Sunda Strait is hypothesized to be affected not only by the complex coastline topography and bathymetry, but also interactions between intraseasonal associated with Madden Julian Oscillation, monsoon, South Java Current, and Indian Ocean Dipole.

RELATED PROJECT

- ✓ Ongoing project supported by NOAA to measure long-term ITF variability in the Makassar Strait as a continuation of the INSTANT program, which was supported by NSF (completed in 2007).
- ✓ Ongoing project supported by the Chinese NSF and led by Prof. Yao-chu Yuan of the Second Institute of Oceanography, China, by deployed moorings in the Luzon Strait in Spring 2008.
- ✓ Ongoing collaborative project (China-Indonesia) to deploy moorings in the Indian Ocean south of the Sunda Strait in November 2007. Chinese PIs led by Dr. Weidong Yu of the First Institute of Oceanography is supported by Chinese NSF and Indonesian PIs led Dr. Sugiarta (BRKP, Indonesia). Both of them have been my long-term collaborators.
- ✓ Ongoing collaborative project (Indonesia-China-USA) on South China Sea – Indonesian Seas Transport/Exchange (SITE) in the Karimata Strait has been funded by NSF starting Spring 2008. One mooring (supported by ONR DURIP N00014-06-1-0738) has been deployed in the Karimata Strait in December 2007 and will be recovered prior the Sunda cruise in the end of October 2008.

REFERENCES

- Arief, D., and S. P. Murray, 1996: Low-frequency fluctuations in the Indonesian throughflow through Lombok Strait, *J. Geophys. Res.*, 101, C5,12455-12,464.doi:10.1029/96JC00051.
- Sprintall, J., A.L. Gordon, R. Murtugudde, and R.D. Susanto, 2000: A semi-annual Indian Ocean forced Kelvin waves observed in the Indonesian Seas, May 1997, *J. Geophys. Res.*, 105, 17217-17230.
- Susanto, R. D. , A. L. Gordon Q. Zheng, 2001 : Upwelling along the coasts of Java and Sumatra and its relation to ENSO, *Geophys. Res. Lett.*, 28, 8, 1599-1602.
- Susanto, R. D. and J. Marra, 2005: The effect on 1997/98 El Nino on chlorophyll-a concentration along the southern coasts of Java and Sumatra, *Oceanography*, 18, 4, 124-127
- Susanto, R.D., T. Moore II and J. Marra, 2006: An ocean color variability in the Indonesian Seas during the SeaWifs Era, *Geochemistry Geophysics Geosystems*, 7,5, doi:10.1029/2005GC001009
- Tozuka, T. T. Qu, and T. Yamagata, Dramatic impact of the South China Sea on the Indonesian Throughflow, *Geophys. Res. Lett.*, 34, doi: 10.1029/2007GL030420