

Stress Potentiates Early and Attenuates Late Stages of Visual Processing

Alexander J. Shackman,^{2,3*} Jeffrey S. Maxwell,^{7*} Brenton W. McMenamin,^{8,9} Lawrence L. Greischar,^{1,2} and Richard J. Davidson^{1,2,3,4,5,6}

¹Laboratory for Affective Neuroscience and ²Department of Psychology, University of Wisconsin–Madison, Madison, Wisconsin 53706, ³Department of Psychiatry, Wisconsin Psychiatric Institute and Clinics, and ⁴HealthEmotions Research Institute, University of Wisconsin–Madison, Madison, Wisconsin 53719, ⁵Waisman Laboratory for Brain Imaging and Behavior and ⁶Center for Investigating Healthy Minds, University of Wisconsin–Madison, Madison, Wisconsin 53705, ⁷Human Research & Engineering Directorate, United States Army Research Laboratory, Aberdeen Proving Ground, Maryland 21005, and ⁸Department of Psychology and ⁹Center for Cognitive Sciences, University of Minnesota–Twin Cities, Minneapolis, Minnesota 55455

Stress can fundamentally alter neural responses to incoming information. Recent research suggests that stress and anxiety shift the balance of attention away from a task-directed mode, governed by prefrontal cortex, to a sensory-vigilance mode, governed by the amygdala and other threat-sensitive regions. A key untested prediction of this framework is that stress exerts dissociable effects on different stages of information processing. This study exploited the temporal resolution afforded by event-related potentials to disentangle the impact of stress on vigilance, indexed by early perceptual activity, from its impact on task-directed cognition, indexed by later postperceptual activity in humans. Results indicated that threat of shock amplified stress, measured using retrospective ratings and concurrent facial electromyography. Stress also double-dissociated early sensory-specific processing from later task-directed processing of emotionally neutral stimuli: stress amplified N1 (184–236 ms) and attenuated P3 (316–488 ms) activity. This demonstrates that stress can have strikingly different consequences at different processing stages. Consistent with recent suggestions, stress amplified earlier extrastriate activity in a manner consistent with vigilance for threat (N1), but disrupted later activity associated with the evaluation of task-relevant information (P3). These results provide a novel basis for understanding how stress can modulate information processing in everyday life and stress-sensitive disorders.

Introduction

Stress is a universal experience that can fundamentally alter neural responses to incoming information. Recent research suggests that stress and anxiety shift the balance of attention away from a task-directed mode, governed by prefrontal cortex (PFC), to a sensory-vigilance mode, governed by the amygdala and other threat-sensitive regions (Bishop, 2007; Arnsten, 2009). A key untested prediction of this framework is that stress exerts dissociable effects across different stages of information processing: potentiating early sensory processing and attenuating later task-directed processing.

Some evidence suggests that threat-elicited stress and anxiety increase vigilance, a sustained enhancement of early sensory pro-

cessing that facilitates threat detection. Aversive conditioning renders indistinguishable stimuli discriminable (Li et al., 2008), threatening stimuli improve contrast sensitivity (Phelps et al., 2006), uncertain physical threats increase risk assessment (Kavaliers and Choleris, 2001), and fearful facial expressions enhance sensory intake (Susskind et al., 2008). These changes may arise from sensitization of the amygdala, which could bias processing directly, via sensory projections (e.g., extrastriate cortex), and indirectly, by modulating ascending neurotransmitter systems (e.g., acetylcholine and norepinephrine) (Davis and Whalen, 2001; Arnsten, 2009; Lim et al., 2009; Sabatinelli et al., 2009).

Other evidence suggests that stress disrupts mechanisms involved in the task-directed regulation of attention and evaluation of task-relevant information, in some cases hampering the performance of tasks that heavily rely on controlled attention, such as spatial working memory (Arnsten and Goldman-Rakic, 1998; Shackman et al., 2006). Performance degradation probably stems from the modulation of task-evoked activity in prefrontal regions (Dolcos and McCarthy, 2006; Erk et al., 2007; Fales et al., 2008; Qin et al., 2009). Such modulation has been ascribed to the diversion of attention (Bishop, 2007) and to changes in the neuronal signal-to-noise ratio that are triggered by the amygdala and mediated by catecholaminergic influences on PFC (Arnsten, 2009).

However, none of these studies has directly assessed the possibility that stress differentially modulates early sensory and later task-directed (postperceptual) stages of information processing,

Received June 30, 2010; revised Nov. 3, 2010; accepted Nov. 22, 2010.

This work was supported by the Department of Defense (National Defense Science and Engineering Graduate Fellowship to J.S.M.; Army Research Laboratory Director's Strategic Initiative to J.S.M.), National Institutes of Health (F31-MH070110 to J.S.M.; P50-MH52354 and R37-MH43454 to R.J.D.; and support of B.W.M. and A.J.S. through T32-HD007151 and T32-MH18931), and National Science Foundation (Graduate Research Fellowship to A.J.S.). We thank K. Berling, S. Blume, D. Cole, I. Dolski, L. Friedman, J. Koger, J. Nichols, and A. Teche for assistance; and A. Fox, A. Heller, J. Oler, J. E. Shackman, H. Slagter, and two anonymous reviewers for critical feedback.

*A.J.S. and J.S.M. contributed equally to this work, and their order was determined by a coin flip.

The authors declare no competing financial interests.

Correspondence should be addressed to Alexander J. Shackman, Jeffrey S. Maxwell, or Richard J. Davidson, University of Wisconsin–Madison, 1202 West Johnson Street, Madison, WI 53706. E-mail: shackman@wisc.edu, jeffmaxwell@gmail.com, or rjddavid@wisc.edu.

DOI:10.1523/JNEUROSCI.3384-10.2011

Copyright © 2011 the authors 0270-6474/11/311156-06\$15.00/0

Report Documentation Page

Form Approved
OMB No. 0704-0188

Public reporting burden for the collection of information is estimated to average 1 hour per response, including the time for reviewing instructions, searching existing data sources, gathering and maintaining the data needed, and completing and reviewing the collection of information. Send comments regarding this burden estimate or any other aspect of this collection of information, including suggestions for reducing this burden, to Washington Headquarters Services, Directorate for Information Operations and Reports, 1215 Jefferson Davis Highway, Suite 1204, Arlington VA 22202-4302. Respondents should be aware that notwithstanding any other provision of law, no person shall be subject to a penalty for failing to comply with a collection of information if it does not display a currently valid OMB control number.

1. REPORT DATE

22 NOV 2010

2. REPORT TYPE

3. DATES COVERED

19-01-2011 to 00-00-2011

4. TITLE AND SUBTITLE

Stress Potentiates Early and Attenuates Late Stages of Visual Processing

5a. CONTRACT NUMBER

5b. GRANT NUMBER

5c. PROGRAM ELEMENT NUMBER

6. AUTHOR(S)

5d. PROJECT NUMBER

5e. TASK NUMBER

5f. WORK UNIT NUMBER

7. PERFORMING ORGANIZATION NAME(S) AND ADDRESS(ES)

Laboratory for Affective Neuroscience and ,Department of Psychology,University of Wisconsin-Madison, Madison, WI,53706

8. PERFORMING ORGANIZATION REPORT NUMBER

9. SPONSORING/MONITORING AGENCY NAME(S) AND ADDRESS(ES)

10. SPONSOR/MONITOR'S ACRONYM(S)

11. SPONSOR/MONITOR'S REPORT NUMBER(S)

12. DISTRIBUTION/AVAILABILITY STATEMENT

Approved for public release; distribution unlimited

13. SUPPLEMENTARY NOTES

This work was supported by the Department of Defense (National Defense Science and Engineering Graduate Fellowship to J.S.M.; Army Research Laboratory Director's Strategic Initiative to J.S.M.), National Institutes of Health (F31-MH070110 to J.S.M.; P50-MH52354 and R37-MH43454 to R.J.D.; and support of B.W.M. and A.J.S. through T32-HD007151 and T32-MH18931), and National Science Foundation (Graduate Research Fellowship to A.J.S.).

14. ABSTRACT

Stress can fundamentally alter neural responses to incoming information. Recent research suggests that stress and anxiety shift the balance of attention away from a task-directed mode, governed by prefrontal cortex, to a sensory-vigilance mode, governed by the amygdala and other threat-sensitive regions. A key untested prediction of this framework is that stress exerts dissociable effects on different stages of information processing. This study exploited the temporal resolution afforded by event-related potentials to disentangle the impact of stress on vigilance, indexed by early perceptual activity, from its impact on task-directed cognition, indexed by later postperceptual activity in humans. Results indicated that threat of shock amplified stress, measured using retrospective ratings and concurrent facial electromyography. Stress also double-dissociated early sensory-specific processing from later task-directed processing of emotionally neutral stimuli: stress amplified N1 (184 ?236 ms) and attenuated P3 (316?488 ms) activity. This demonstrates that stress can have strikingly different consequences at different processing stages. Consistent with recent suggestions, stress amplified earlier extrastriate activity in a manner consistent with vigilance for threat (N1), but disrupted later activity associated with the evaluation of task-relevant information (P3). These results provide a novel basis for understanding how stress can modulate information processing in everyday life and stress-sensitive disorders.

15. SUBJECT TERMS

16. SECURITY CLASSIFICATION OF:			17. LIMITATION OF ABSTRACT Public Release	18. NUMBER OF PAGES 14	19a. NAME OF RESPONSIBLE PERSON
a. REPORT unclassified	b. ABSTRACT unclassified	c. THIS PAGE unclassified			

Standard Form 298 (Rev. 8-98)
Prescribed by ANSI Std Z39-18

as current models hypothesize (Bishop, 2007; Arnsten, 2009). Here, we exploited the temporal resolution of event-related potentials (ERPs) to measure the impact of stress, elicited by task-irrelevant threat of shock, on neural activity evoked by an emotionally neutral visual discrimination task. Stress-induced vigilance were evaluated using the visual P1 (112–144 ms) and N1 (184–236 ms), early sensory-specific ERP components that are generated in extrastriate cortex and sensitive to the amount of attention allocated to incoming information, that is, the signal-to-noise ratio of visual processing (Mishra and Hillyard, 2009). Task-directed processing was evaluated using the P3 (316–488 ms), a later component that is largely insensitive to sensory modality and thought to reflect evaluative processes necessary for making task-relevant responses (Nieuwenhuis et al., 2005; Duncan et al., 2009). Stress was verified using facial electromyography (EMG) recorded from the corrugator muscle (supplemental Fig. S1, available at www.jneurosci.org as supplemental material), a well validated measure of negative affect that is sensitive to amygdala activity (Lanteaume et al., 2007; Lee et al., 2009).

Materials and Methods

Thirty-two (half female) right-handed individuals were recruited and paid \$10/h. Participants provided informed consent in accord with the local Institutional Review Board. At session's start, electrodes were affixed to the fourth and fifth fingers of each hand. Participants were instructed that (1) they would receive one or more painful, but not harmful, electric shocks during threat blocks; (2) the timing and laterality of shocks would be random and unrelated to the task or performance; and (3) they would never receive shocks during safety blocks. Before each block, participants were informed whether it was associated with safety or threat. Shocks (5 mA) were generated using an A13-22 stimulator (Coulbourn Instruments). Participants received 5–6 shocks total. Shock electrodes were unplugged during safety blocks (Grillon and Ameli, 1998).

Task stimuli consisted of up and down target arrows (100 ms; 2.4° visual angle) presented 5.7° lateral to fixation (1600–2400 ms stimulus onset asynchrony). Targets were flanked by equiprobable arrow or diamond distractors. Participants were instructed to maintain fixation, respond to targets using corresponding keyboard arrows, and emphasize accuracy over speed. Participants performed sixteen 64-trial blocks (half threat; order counterbalanced). Stimulus presentation was controlled using E-Prime (Psychology Software Tools). Because preliminary analyses indicated that the impact of stress did not vary with distractor type (see the supplemental material, available at www.jneurosci.org), data were collapsed across this factor.

Following the experiment, participants used 100 mm visual analog scales to rate the intensity of their emotional experience (anxious, happy, safe, or stressed) during safety and threat blocks. To minimize the number of comparisons, a composite stress index was computed by averaging items (positive items reverse-scored; $\alpha_{\text{Cronbach}} = 0.78$).

EMG and ERP data were acquired using a 128-channel array (Electrical Geodesics; 1–200 Hz bandpass; 500 Hz digitization; Cz reference). Data acquisition and preprocessing used Netstation (Electrical Geodesics). EMG was processed following published procedures (Shackman et al., 2006). Segments containing artifacts were rejected. Channels overlying the left and right corrugator muscles (supplemental Fig. S1, available at www.jneurosci.org as supplemental material) were bipolar re-referenced and mean power density ($\mu\text{V}^2/\text{Hz}$) estimated for the 45–200 Hz band using 50%-overlapped, Hann-windowed 1.024 s epochs. Power densities were \log_{10} -transformed and averaged across hemispheres.

ERP data were filtered (0.3–30 Hz), interpolated to replace unusable channels, and segmented. Segments corresponding to shock delivery, incorrect responses, or artifacts were discarded. Artifact-free data were average re-referenced, baseline corrected (200 ms), and averaged. Additional processing used EEGLAB (<http://scn.ucsd.edu/eeelab>) and in-house Matlab (The MathWorks) and IDL (ITT Visual Information Solutions) code. Omnibus changes in neural activity were quantified by

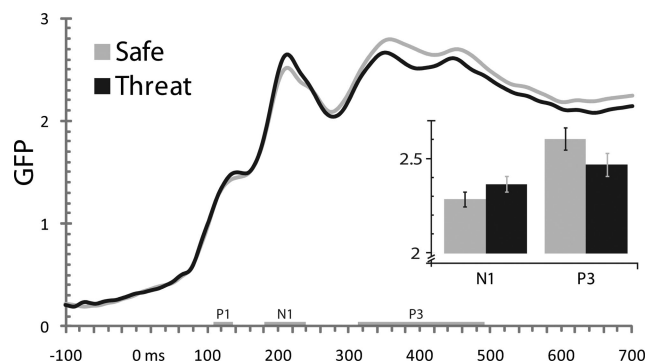


Figure 1. Stress double-dissociated earlier from later task-evoked GFP (SD μV). Threat amplified the N1 (184–236 ms) and attenuated the P3 (316–488 ms), without substantially altering the P1 (112–144 ms). Confidence bars indicate the probability of the null hypothesis being rejected by chance; non-overlapping bars indicate $p < 0.05$ (Shackman et al., 2010).

global field power (GFP), the SD of voltage across channels. Larger GFP values correspond to stronger underlying local field potentials (i.e., increased neural activity) (Murray et al., 2008). Components were identified by inspection of the grand average ERP and GFP (Fig. 1 and supplemental Fig. S2, available at www.jneurosci.org as supplemental material). Voltages were averaged using symmetric, peak-centered windows: P1 (112–144 ms), N1 (184–236 ms), and P3 (316–488 ms).

Preliminary hypothesis testing was performed using contrasts conducted on GFP (threat vs safe). The hypothesized double dissociation was assessed by testing the Stress (threat, safe) \times Component (early, late) interaction. Components that showed no evidence of stress modulation were omitted from follow-up tests. To identify maximally stress-sensitive regions for each component, electrode-wise F tests comparing mean voltage during threat and safety were conducted. Familywise error (FWE) was controlled at the cluster level using a permutation-based procedure (see the supplemental material, available at www.jneurosci.org) (Nichols and Holmes, 2002). Apparent hemispheric asymmetries (“lateralities”) were tested by contrasting mean cluster activity for the target cluster and its homolog, equivalent to the Stress \times Hemisphere interaction (Bonferroni corrected for the number of tests). Permutation-based procedures were also used to identify regions where (1) stress altered mean activity and (2) variation in activity predicted variation in behavior under stress. That is, the latter procedure assessed the joint-hypothesis of nonzero mean and individual differences (see the supplemental material, available at www.jneurosci.org). This analysis used Spearman’s ρ performed using cluster averages. Corrected p values are reported for regional analyses (see the supplemental material, available at www.jneurosci.org).

Results

Participants reported experiencing more intense stress under threat ($M = 6.5$, $SD = 20.0$) than during safety ($M = -19.3$, $SD = 11.6$), $t_{(31)} = 6.7$, $p < 0.001$. They also expressed more intense negative emotion on their faces, indexed by corrugator EMG activity, under threat ($M = -1.0$, $SD = 0.5$) than during safety ($M = -1.1$, $SD = 0.4$), $t_{(31)} = 2.7$, $p = 0.01$ (supplemental Fig. S1, available at www.jneurosci.org as supplemental material). Mean accuracy ($p = 0.92$) and reaction time (RT) ($p = 0.09$) were not reliably affected by threat (see the supplemental material, available at www.jneurosci.org).

Neurally, stress dissociably altered evoked activity during two distinct periods (Fig. 1). Initially, threat increased GFP during the N1 window, $F_{(1,31)} = 4.2$, $p = 0.05$. Subsequently, threat decreased GFP during the P3 window, $F_{(1,31)} = 5.5$, $p = 0.03$. GFP modulation was not obtained during the P1 window, $F < 1$. Underscoring the dissociable impact of stress on successive stages of visual-cognitive processing, a disordinal interaction was ob-

tained between Stress (threat, safety) and Component (N1, P3), $F_{(1,31)} = 15.8$, $p = 0.0004$ (Fig. 1).

To determine the most stress-sensitive scalp regions, electrode-wise contrasts were performed for the N1 and P3 (Fig. 2, supplemental Table S1, available at www.jneurosci.org as supplemental material). Permutation-based procedures were used to control FWE across the array. For the N1, this indicated that threat-induced stress potentiated visually evoked activity in a large cluster of electrodes centered along the zenith of the scalp, $p < 0.001$. A second cluster of electrodes in the vicinity of the right mastoid exhibited a similar trend, $p = 0.07$. Laterality analyses confirmed that potentiation of visually evoked activity in the right mastoid cluster was stronger than the homologous region of the left-hemisphere, $p = 0.001$. For the P3, regional analyses indicated that stress attenuated task-evoked activity across a large cluster of centroparietal electrodes, $p = 0.05$.

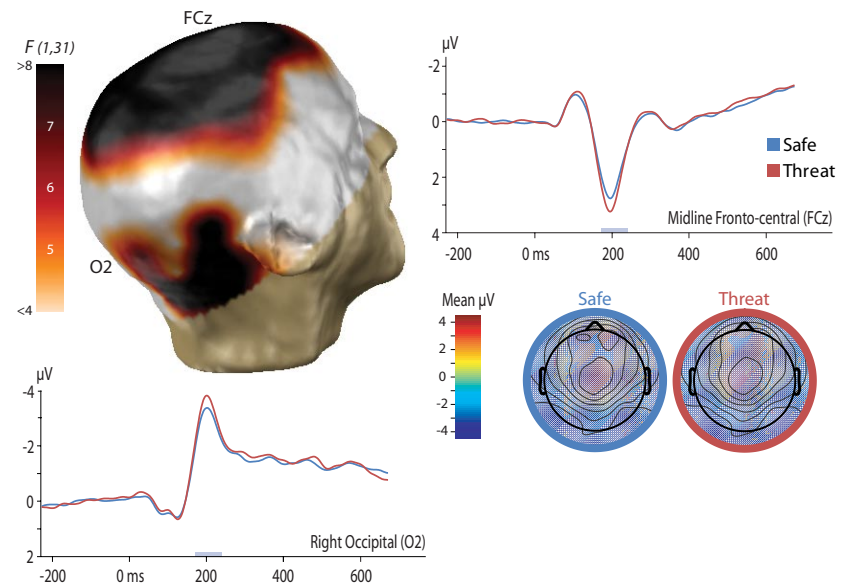
A final analysis was used to identify regions where mean activity was both sensitive to stress and predictive of individual differences in behavior under stress. This revealed a cluster of right-frontal electrodes that showed both effects, $p = 0.02$ (Fig. 3, supplemental Table S2, available at www.jneurosci.org as supplemental material). Here, P3 activity was attenuated by stress, particularly so in the right hemisphere (laterality test: $p = 0.03$), and those participants showing greater attenuation exhibited worse performance on the discrimination task, indexed by increased response latencies ($\rho = 0.45$). This effect was not the result of a speed–accuracy trade-off (supplemental Fig. S3, available at www.jneurosci.org as supplemental material). No other clusters emerged for either component for any measure of performance or emotion.

Discussion

The present findings demonstrate that task-irrelevant stress, elicited by uncertain physical threat, is associated with dissociable effects on earlier sensory processing and later postperceptual processing. This provides new evidence that the sustained stress characteristic of dangerous environments can have fundamentally different consequences for the perception of visual information and the subsequent, task-directed evaluation of that information. These observations are consistent with recent models of stress and anxiety derived from hemodynamic and behavioral studies in humans and molecular studies in monkeys and rodents (Bishop, 2007; Arnsten, 2009).

Threat of shock increased the subjective experience and objective expression of stress, indexed by retrospective ratings and continuously recorded corrugator EMG activity, respectively. Contemporaneously, threat amplified earlier (N1, 184–236 ms)

A N1 Amplification under Stress



B P3 Attenuation under Stress

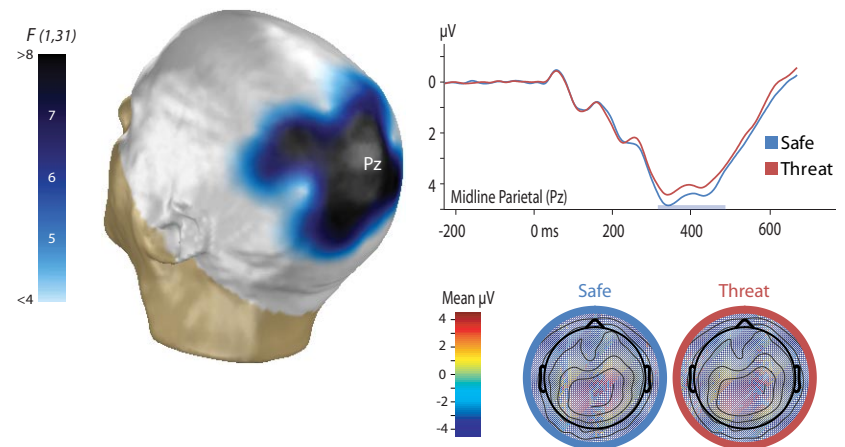


Figure 2. Stress amplified early perceptual processing (N1) and attenuated subsequent postperceptual processing (P3). The N1 and P3 components are shown in **A** and **B**, respectively. Three-dimensional topographic maps depict the thresholded threat versus safe contrast (uncorrected $p < 0.05$, corrected $p < 0.10$). Two-dimensional topographic maps depict the voltage for each condition. Results are shown for the average reference.

and attenuated later (P3, 316–488 ms) neural activity associated with the processing of emotionally neutral stimuli (Fig. 1). This double dissociation rules out the possibility that these effects are determined by nonspecific changes in arousal or distraction. Nonspecific changes would be expected to exert similar effects on both stages of processing. During both the N1 and P3 windows, threat-induced stress was associated with more pronounced effects at right-hemisphere electrodes (supplemental Table S2, available at www.jneurosci.org as supplemental material). During the P3 window, but not the earlier N1 window, changes in activity predicted stress-induced performance degradation (Fig. 3).

The use of threat of shock to induce stress makes these observations particularly noteworthy, given the potential limitations of alternative manipulations that rely on the intermixed presentation of task cues and threat stimuli (e.g., emotional scenes, faces, or films) in the same perceptual channel. Doing so risks confounding the influence of emotional states or moods, such as stress, with differences in perception (Olofsson et al., 2008) or

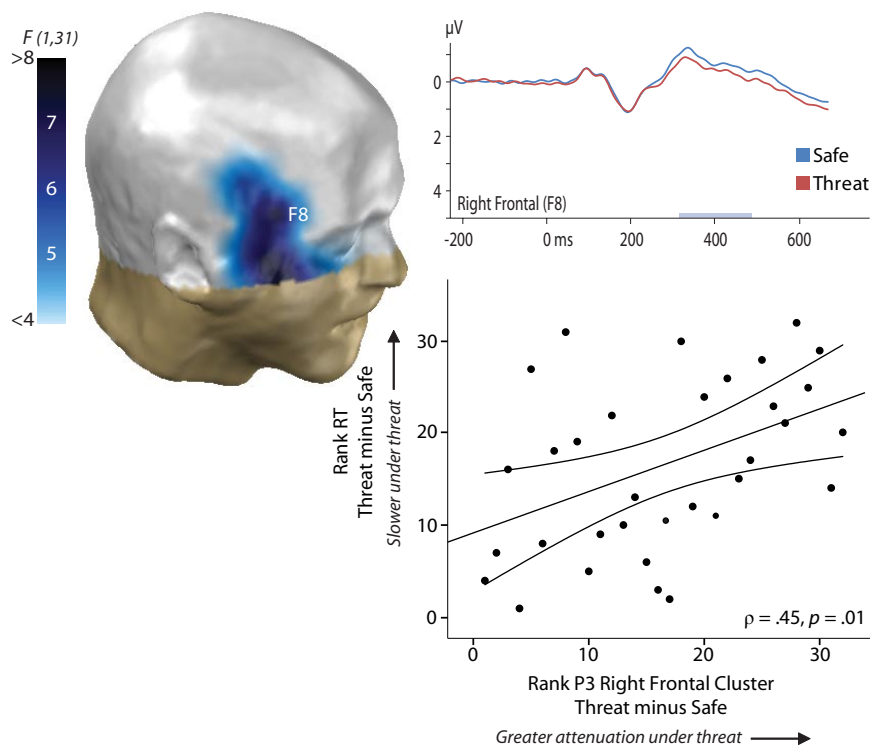


Figure 3. Greater attenuation of the P3 at right-frontal electrodes predicted reduced task performance. Mean P3 activity in this cluster was attenuated under threat, depicted in the three-dimensional topographic map. Individuals showing greater P3 attenuation in this cluster exhibited worse performance on the discrimination task, indexed by increased RT, $\rho = 0.45$. The joint test was significant, $p = 0.02$.

attention (Pereira et al., 2006; Nummenmaa et al., 2009). Compounding this limitation, prior work suggests that briefly presented emotional stimuli do not necessarily produce sustained negative affect (Bradley et al., 1996). This concern is particularly grave in studies where concomitant measures of emotion were not acquired (Shackman et al., 2006).

Stress-induced amplification of the N1 likely stems from modulation of extrastriate cortex—the primary generator of the visually evoked N1 (Mishra and Hillyard, 2009)—by the amygdala or lateral PFC (Deouell and Knight, 2005; Bishop, 2007; Lim et al., 2009; Sabatinelli et al., 2009). Such biasing signals are thought to underlie the increased vigilance and augmented sensory intake characteristically elicited by threatening environments (Davis and Whalen, 2001).

N1 amplification suggests that stress alters visual attention by increasing the gain on sensory processing. This inference stems in part from the absence of reliable changes in the earlier P1 window (112–144 ms) (Fig. 1). This is potentially informative in light of previously reported dissociations between the P1 and N1 (Mangun and Hillyard, 1991; Mishra and Hillyard, 2009). Although both components have been localized to extrastriate cortex, P1 is thought to reflect the gating of incoming information via inhibition of unattended or ignored information, whereas N1 is thought to reflect orienting and discrimination processes that operate via enhancement of incoming information (Hopfinger et al., 2004). These observations suggest that the impact of threat-induced stress on early sensory processing is primarily achieved through increases in sensory gain rather than increased selectivity (cf. Kastner and Ungerleider, 2000). This view is consistent with evidence that the amygdala densely innervates the visual cortices (Freese and Amaral, 2009). Extant anatomical research in non-human primates suggests that such connections likely permit ex-

citatory feedback modulation (Freese and Amaral, 2009), allowing the amygdala to potentiate visual processing under threat. Interestingly, acute stress seems to increase the sensitivity but decrease the specificity of amygdala reactivity, possibly through a catecholamine-mediated pathway (van Marle et al., 2009). This is consistent with our observation that stress amplified early sensory processing of non-threatening stimuli. In a genuinely dangerous natural environment, such “false positives” are a small price to pay for the expedited detection of threat.

P3 attenuation likely arises from the disruption of cognitive control processes implemented in frontoparietal regions. The P3 has been conceptualized as an index of selective attention that reflects processes involved in evaluating targets to engage appropriate goal-directed responses (Nieuwenhuis et al., 2005; Duncan et al., 2009). Indeed, P3 amplitude is attenuated in the face of secondary tasks and distractions (Kok, 2001). Other research suggests that it also reflects the downstream consequences of activity in the locus ceruleus–norepinephrine (LC–NE) system (Pineda et al., 1989; Nieuwenhuis et al., 2005), the major ascending source of NE to the brain (Berridge,

2008). The LC–NE system is exquisitely sensitive to stress; threat and other stressors amplify NE levels in PFC (Arnsten, 2009), an effect mediated by excitatory projections from the amygdala to LC (Goldstein et al., 1996). These observations suggest that attenuation of the task-evoked P3 reflects (1) the diversion of top-down control to potentially threat-relevant information in the environment, (2) the disruption of top-down control by alterations in catecholaminergic activity, or (3) a combination of these mechanisms.

Our finding that stress attenuated the selective attention processes indexed by the P3 in healthy individuals extends prior work in clinical samples. For instance, the task-related P3 is attenuated in spider phobics in the presence of an uncaged tarantula (Moser et al., 2005). Notably, our results also imply that reduction of the task-evoked P3 in the face of aversive emotional images (Li et al., 2006; Keil et al., 2007) is at least partially attributable to the negative affect elicited by such images, rather than the reflexive capture of attention.

The impact of threat-induced stress on both earlier perceptual (N1) and later postperceptual (P3) visual processing was reliably exaggerated at electrodes overlying the right hemisphere. This asymmetry is consistent with a large body of work demonstrating that arousing states of stress, such as that elicited by threat of shock (Dalton et al., 2005; Coan et al., 2006) and aversive images (Dolcos and McCarthy, 2006), activate right lateral PFC. The present results are consistent with the hypothesis (Maxwell et al., 2005; Shackman et al., 2009) that this stems from the preferential involvement of the right hemisphere in vigilance/sustained attention (Robertson and Garavan, 2004), reflexive attention (Corbetta et al., 2008), and arousing states of anxiety (Shackman et al., 2006). Another

possibility is that this reflects neurotransmitter asymmetries (Davidson et al., 1993; Shackman et al., 2006).

The dissociable impact of threat of shock on the N1 and P3 components provides novel support for the hypothesis that stress and anxiety can fundamentally alter the balance of neural processing (Bishop, 2007; Arnsten, 2009). By this account, stress is associated with a catecholamine-mediated shift from a highly controlled task-directed mode, reflecting the influence of prefrontal biasing signals on posterior sensory and motor regions (Miller and Cohen, 2001), to a vigilant threat-assessment mode, reflecting the influence of amygdalar biasing signals (Davis and Whalen, 2001). Consistent with this perspective, we found that stress potentiated the early processing of visual stimuli in extrastriate visual areas, indexed by the N1, but attenuated the subsequent task-directed evaluation of the same stimuli, indexed by the P3.

P3 attenuation was selectively associated with reduced performance of the speeded visual discrimination task under stress, reinforcing the argument that this component more closely reflects postperceptual evaluative processes than the N1. Nevertheless, the fact that stress did not alter mean performance warrants comment. It is likely that this null effect reflects several factors. First, individuals show marked variability in their reactions to stress; often, many participants do not show frank evidence of stress in response to laboratory stressors, such as threat of shock (Shackman et al., 2006). Second, mean performance of the discrimination task was near ceiling, rendering it insensitive to perturbation by stress (Shackman et al., 2006). More generally, this null effect probably reflects the principle that overt behavior is influenced by multiple, convergent neural processes and that alterations in particular stages of the processing stream may or may not be sufficient to shift the behavioral output of this stream. Use of a more potent stressor or sensitive task would be expected to reveal more robust differences in performance.

Because of the practical difficulties of manipulating emotion in the laboratory, little attention has been paid to the impact of stress, fear, and anxiety on the neural circuitry underlying human cognition. This is problematic in light of a growing body of work showing that altered responsiveness to uncertain threat plays a key role in a variety of clinical anxiety disorders (Davis et al., 2010) and maladaptive behaviors (Moberg and Curtin, 2009). The present investigation represents a key step toward addressing this gap. Future research in this area is certain to have substantial benefits for our understanding of how “feeling frazzled” (Arnsten, 1998) influences competition for the control of attention and action.

References

- Arnsten AF (1998) The biology of being frazzled. *Science* 280:1711–1712.
- Arnsten AF (2009) Stress signalling pathways that impair prefrontal cortex structure and function. *Nat Rev Neurosci* 10:410–422.
- Arnsten AF, Goldman-Rakic PS (1998) Noise stress impairs prefrontal cortical cognitive function in monkeys: evidence for a hyperdopaminergic mechanism. *Arch Gen Psychiatry* 55:362–368.
- Berridge CW (2008) Noradrenergic modulation of arousal. *Brain Res Rev* 58:1–17.
- Bishop SJ (2007) Neurocognitive mechanisms of anxiety: an integrative account. *Trends Cogn Sci* 11:307–316.
- Bradley MM, Cuthbert BN, Lang PJ (1996) Picture media and emotion: effects of a sustained affective context. *Psychophysiology* 33:662–670.
- Coan JA, Schaefer HS, Davidson RJ (2006) Lending a hand: social regulation of the neural response to threat. *Psychol Sci* 17:1032–1039.
- Corbetta M, Patel G, Shulman GL (2008) The reorienting system of the human brain: from environment to theory of mind. *Neuron* 58:306–324.
- Dalton KM, Kalin NH, Grist TM, Davidson RJ (2005) Neural-cardiac coupling in threat-evoked anxiety. *J Cogn Neurosci* 17:969–980.
- Davidson RJ, Kalin NH, Shelton SE (1993) Lateralized response to diazepam predicts temperamental style in rhesus monkeys. *Behav Neurosci* 107:1106–1110.
- Davis M, Whalen PJ (2001) The amygdala: vigilance and emotion. *Mol Psychiatry* 6:13–34.
- Davis M, Walker DL, Miles L, Grillon C (2010) Phasic vs sustained fear in rats and humans: role of the extended amygdala in fear vs anxiety. *Neuropsychopharmacology* 35:105–135.
- Deouell LY, Knight RT (2005) ERP measures of multiple attention deficits following prefrontal damage. In: *Neurobiology of attention* (Itty L, Rees G, Tsotos JK, eds), pp 339–344. San Diego: Elsevier.
- Dolcos F, McCarthy G (2006) Brain systems mediating cognitive interference by emotional distraction. *J Neurosci* 26:2072–2079.
- Duncan CC, Barry RJ, Connolly JF, Fischer C, Michie PT, Näätänen R, Polich J, Reinvang I, Van Petten C (2009) Event-related potentials in clinical research: guidelines for eliciting, recording, and quantifying mismatch negativity, P300, and N400. *Clin Neurophysiol* 120:1883–1908.
- Erk S, Kleczar A, Walter H (2007) Valence-specific regulation effects in a working memory task with emotional context. *Neuroimage* 37:623–632.
- Fales CL, Barch DM, Burgess GC, Schaefer A, Mennin DS, Gray JR, Braver TS (2008) Anxiety and cognitive efficiency: differential modulation of transient and sustained neural activity during a working memory task. *Cogn Affect Behav Neurosci* 8:239–253.
- Freese JL, Amaral DG (2009) Neuroanatomy of the human amygdala. In: *The human amygdala* (Whalen PJ, Phelps EA, eds), pp 3–42. New York: Guilford.
- Goldstein LE, Rasmusson AM, Bunney BS, Roth RH (1996) Role of the amygdala in the coordination of behavioral, neuroendocrine, and prefrontal cortical monoamine responses to psychological stress in the rat. *J Neurosci* 16:4787–4798.
- Grillon C, Ameli R (1998) Effects of threat of shock, shock electrode placement and darkness on startle. *Int J Psychophysiol* 28:223–231.
- Hopfinger JB, Luck SJ, Hillyard SA (2004) Selective attention: electrophysiological and neuromagnetic studies. In: *The cognitive neurosciences*, Ed 3 (Gazzaniga MS, ed), pp 561–574. Cambridge, MA: MIT Press.
- Kastner S, Ungerleider LG (2000) Mechanisms of visual attention in the human cortex. *Annu Rev Neurosci* 23:315–341.
- Kavaliers M, Choleris E (2001) Antipredator responses and defensive behavior: ecological and ethological approaches for the neurosciences. *Neurosci Biobehav Rev* 25:577–586.
- Keil A, Bradley MM, Junghöfer M, Russmann T, Lowenthal W, Lang PJ (2007) Cross-modal attention capture by affective stimuli: evidence from event-related potentials. *Cogn Affect Behav Neurosci* 7:18–24.
- Kok A (2001) On the utility of P3 amplitude as a measure of processing capacity. *Psychophysiology* 38:557–577.
- Lanteau L, Khalifa S, Régis J, Marquis P, Chauvel P, Bartolomei F (2007) Emotion induction after direct intracerebral stimulations of human amygdala. *Cereb Cortex* 17:1307–1313.
- Lee H, Shackman AJ, Jackson DC, Davidson RJ (2009) Test-retest reliability of voluntary emotion regulation. *Psychophysiology* 46:874–879.
- Li W, Howard JD, Parrish TB, Gottfried JA (2008) Aversive learning enhances perceptual and cortical discrimination of indiscriminable odor cues. *Science* 319:1842–1845.
- Li X, Li X, Luo Y-J (2006) Differential influences of negative emotion on spatial and verbal working memory: evidence from event-related potential and source current density analysis. *Neuroreport* 17:1555–1559.
- Lim SL, Padmala S, Pessoa L (2009) Segregating the significant from the mundane on a moment-to-moment basis via direct and indirect amygdala contributions. *Proc Natl Acad Sci U S A* 106:16841–16846.
- Mangun GR, Hillyard SA (1991) Modulations of sensory-evoked brain potentials indicate changes in perceptual processing during visual-spatial priming. *J Exp Psychol Hum Percept Perform* 17:1057–1074.
- Maxwell JS, Shackman AJ, Davidson RJ (2005) Unattended facial expressions asymmetrically bias the concurrent processing of nonemotional information. *J Cogn Neurosci* 17:1386–1395.
- Miller EK, Cohen JD (2001) An integrative theory of prefrontal cortex function. *Annu Rev Neurosci* 24:167–202.
- Mishra J, Hillyard SA (2009) Endogenous attention selection during binocular rivalry at early stages of visual processing. *Vision Res* 49:1073–1080.
- Moberg CA, Curtin JJ (2009) Alcohol selectively reduces anxiety but not

- fear: startle response during unpredictable vs. predictable threat. *J Abnorm Psychol* 118:335–347.
- Moser JS, Hajcak G, Simons RF (2005) The effects of fear on performance monitoring and attentional allocation. *Psychophysiology* 42:261–268.
- Murray MM, Brunet D, Michel CM (2008) Topographic ERP analyses: a step-by-step tutorial review. *Brain Topogr* 20:249–264.
- Nichols TE, Holmes AP (2002) Nonparametric permutation tests for functional neuroimaging: a primer with examples. *Hum Brain Mapp* 15:1–25.
- Nieuwenhuis S, Aston-Jones G, Cohen JD (2005) Decision making, the P3, and the locus coeruleus-norepinephrine system. *Psychol Bull* 131:510–532.
- Nummenmaa L, Hyönä J, Calvo MG (2009) Emotional scene content drives the saccade generation system reflexively. *J Exp Psychol Hum Percept Perform* 35:305–323.
- Olofsson JK, Nordin S, Sequeira H, Polich J (2008) Affective picture processing: an integrative review of ERP findings. *Biol Psychol* 77:247–265.
- Pereira MG, Volchan E, Leal de Souza GG, Oliveira L, Campagnoli RR, Pinheiro WM, Pessoa L (2006) Sustained and transient modulation of performance induced by emotional picture viewing. *Emotion* 6:622–634.
- Phelps EA, Ling S, Carrasco M (2006) Emotion facilitates perception and potentiates the perceptual benefits of attention. *Psychol Sci* 17:292–299.
- Pineda JA, Foote SL, Neville HJ (1989) Effects of locus coeruleus lesions on auditory, long-latency, event-related potentials in monkey. *J Neurosci* 9:81–93.
- Qin S, Hermans EJ, van Marle HJ, Luo J, Fernández G (2009) Acute psychological stress reduces working memory-related activity in the dorsolateral prefrontal cortex. *Biol Psychiatry* 66:25–32.
- Robertson IH, Garavan H (2004) Vigilant attention. In: *The cognitive neurosciences III*, Ed 3 (Gazzaniga MS, ed), pp 563–578. Cambridge, MA: MIT Press.
- Sabatinelli D, Lang PJ, Bradley MM, Costa VD, Keil A (2009) The timing of emotional discrimination in human amygdala and ventral visual cortex. *J Neurosci* 29:14864–14868.
- Shackman AJ, Sarinopoulos I, Maxwell JS, Pizzagalli DA, Lavric A, Davidson RJ (2006) Anxiety selectively disrupts visuospatial working memory. *Emotion* 6:40–61.
- Shackman AJ, McMenamin BW, Maxwell JS, Greischar LL, Davidson RJ (2009) Right dorsolateral prefrontal cortical activity and behavioral inhibition. *Psychol Sci* 20:1500–1506.
- Shackman AJ, McMenamin BW, Maxwell JS, Greischar LL, Davidson RJ (2010) Identifying robust and sensitive frequency bands for interrogating neural oscillations. *Neuroimage* 51:1319–1333.
- Susskind JM, Lee DH, Cusi A, Feiman R, Grabski W, Anderson AK (2008) Expressing fear enhances sensory acquisition. *Nat Neurosci* 11:843–850.
- van Marle HJ, Hermans EJ, Qin S, Fernández G (2009) From specificity to sensitivity: how acute stress affects amygdala processing of biologically salient stimuli. *Biol Psychiatry* 66:649–655.

**Stress Potentiates Early and Attenuates Late Stages of Visual Processing—
Supplementary Method and Results**

A.J. Shackman, J.S. Maxwell, B.W. McMenamin, L.L. Greischar, and R.J. Davidson

Contents

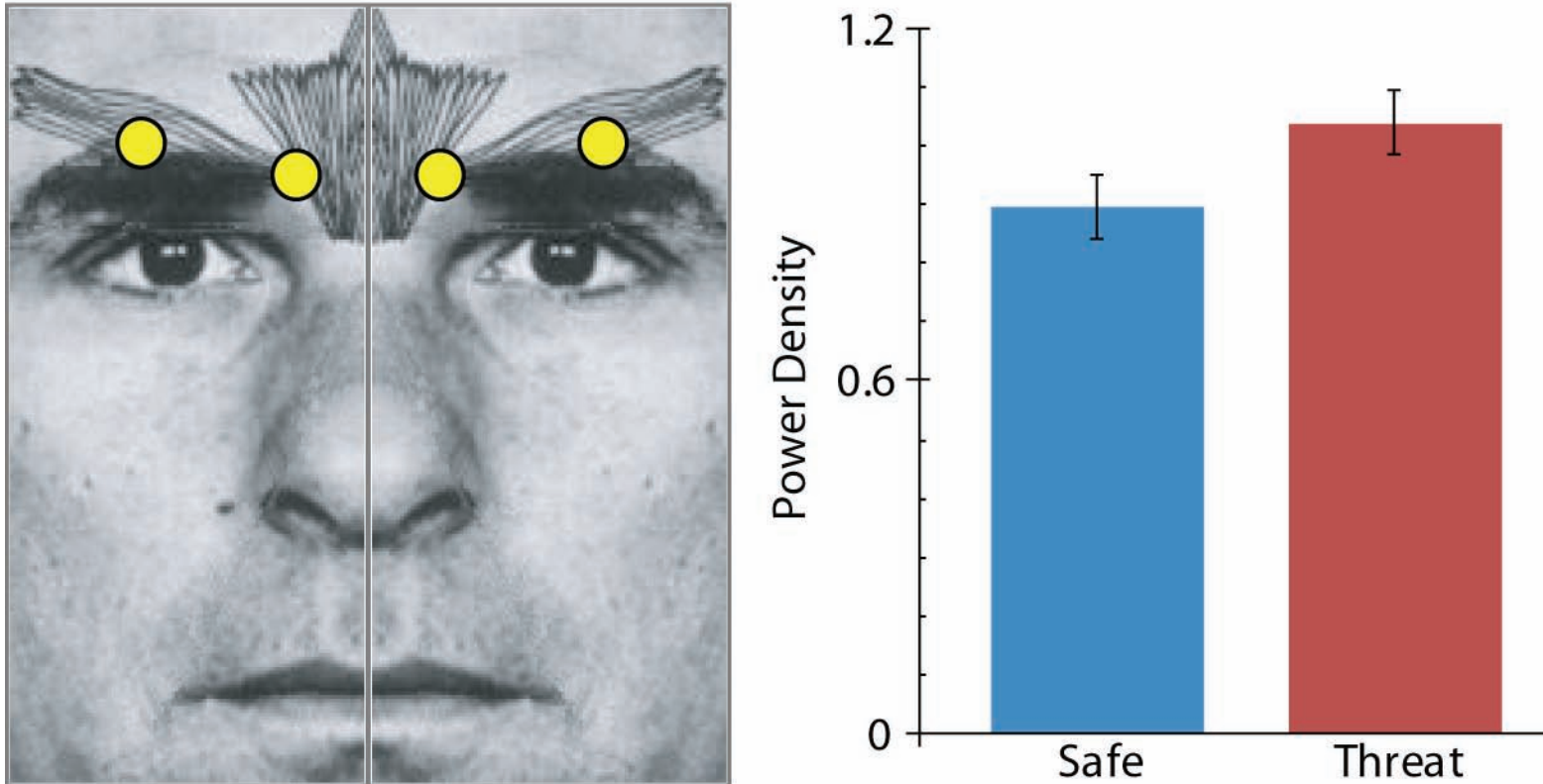
Figure S1. <i>Corrugator electromyography (EMG)</i>	p. 2
Figure S1. <i>Identification of ERP component windows</i>	p. 3
Figure S3. <i>Relations between right-frontal P3 amplitude and accuracy</i>	p. 4
Detailed Behavioral Analyses	p. 5
Correction for Multiple Comparisons	p. 6
Table S1. <i>Regional changes in evoked neural activity under stress</i>	p. 7
Supplementary References	p. 8

Correspondence:

Alexander J. Shackman or Jeffrey S. Maxwell or Richard J. Davidson
shackman@wisc.edu or jeffsmaxwell@gmail.com or rjdavids@wisc.edu
University of Wisconsin—Madison
1202 West Johnson Street
Madison, Wisconsin 53706

Figure S1

Corrugator Electromyography (EMG)



Supplementary Figure S2. Corrugator EMG. Threat-of-shock increased the expression of stress on the face. **Left:** Activity from the left and right *corrugator supercilii* (striations running parallel to the brows), a well-validated index of negative affect, was continuously acquired using bipolar-referenced electrode pairs (yellow dots). **Right:** Participants showed more corrugator EMG activity ($\log_{10}\mu V^2/Hz + 2$; 45-200Hz) during threat (red) compared to safety (blue). Confidence bars indicate the probability of the null hypothesis being rejected by chance; non-overlapping bars indicate $p < .05$ (Shackman et al., 2010).

Figure S2

Supplementary Figure S1. Identification of ERP component windows. Figure depicts the grand average ERP across subjects and conditions for each electrode. Colored bars along the x -axis depict the windows used for quantifying each component. Windows were symmetric and centered on the approximate peak(s) based on inspection of the grand average ERP and GFP. Mean voltage for each component is shown in two-dimensional topographic plots at the top of the panel (spline-interpolated; scaled to the absolute maximum of each component). Electrodes below the plane formed by the nasion and periauricular points are depicted in a 'skirt' outside the black circle. For descriptive purposes, the 2-ms samples showing significant differences in GFP under stress ($p < .05$, uncorrected) are identified by white bars at the bottom of the panel.

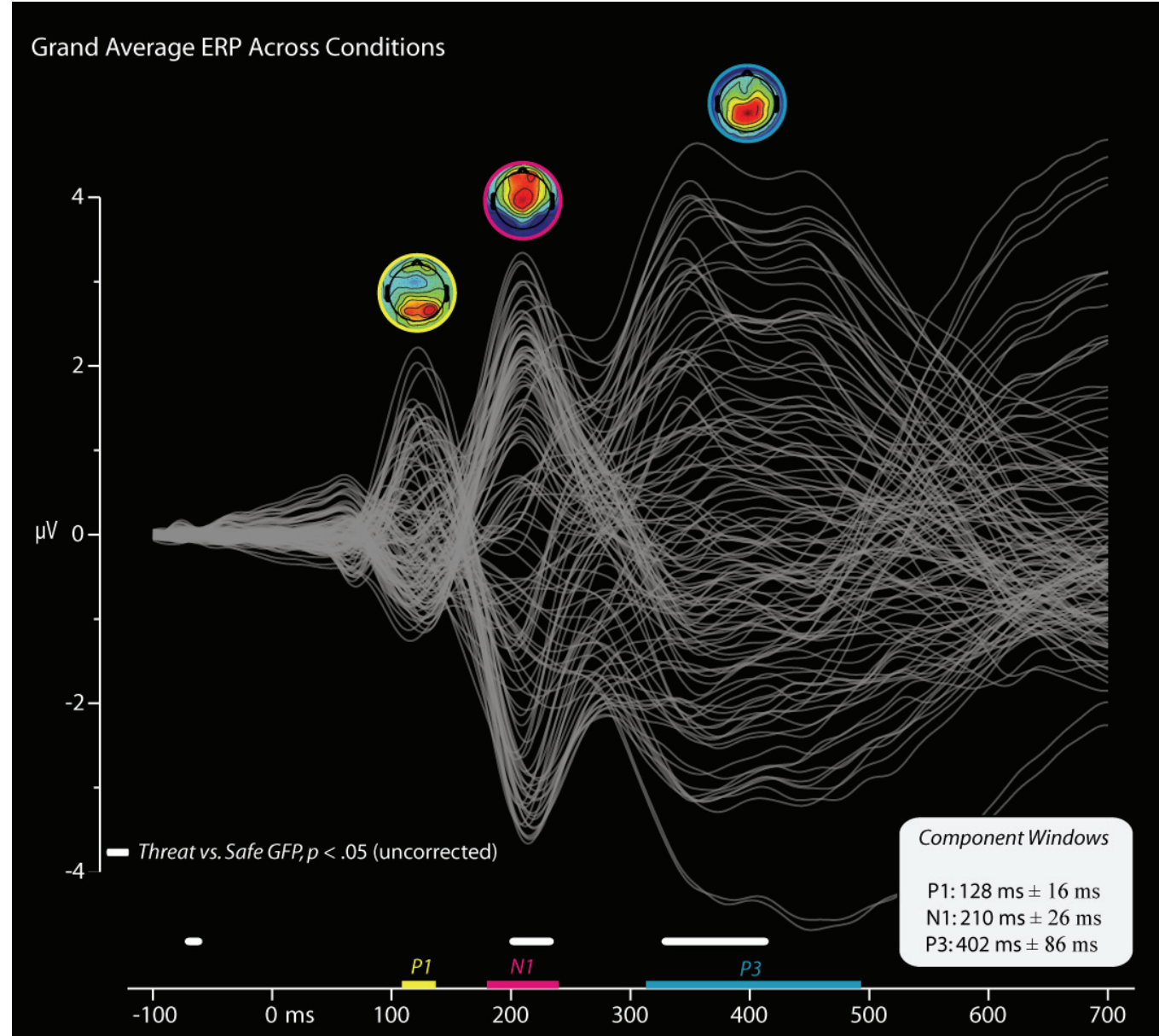
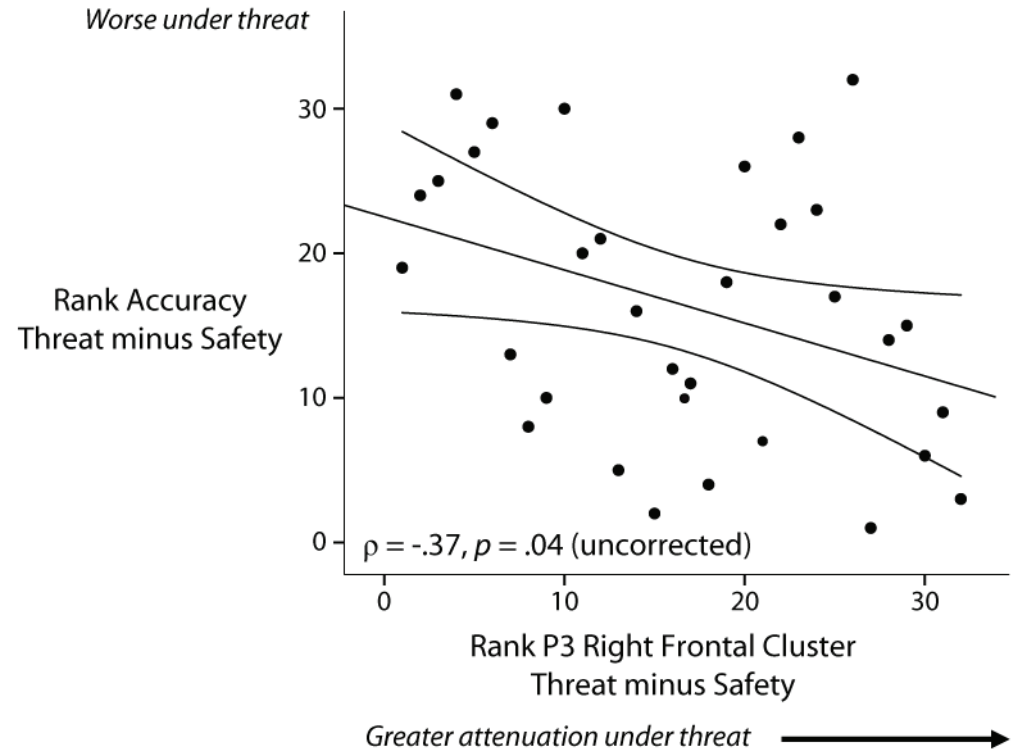


Figure S3

Supplementary Figure S3. *Relations between right-frontal P3 amplitude and accuracy.* Individuals displaying greater attenuation of the P3 at right-frontal electrodes showed reduced performance under stress, indexed by degradation of performance accuracy (percentage correct). While this effect eliminates concerns about a potential speed-accuracy tradeoff, in contrast to relations with RT, this effect did not survive whole-scalp correction for multiple comparisons, $p = .24$ (corrected).



Detailed Behavioral Analyses

Stimuli consisted of up and down target arrows (100ms; 2.4° of visual angle) presented 5.7° to the left or right of fixation (1600-2400ms stimulus onset asynchrony). Targets were flanked by equiprobable congruent-arrow distractors, incongruent-arrow distractors, or diamond control stimuli. Participants were instructed to maintain central fixation, respond to targets using the corresponding keyboard arrows, emphasize accuracy over speed, and ignore any emotions aroused by threat.

For preliminary analyses, repeated-measures ANOVAs were used to examine the impact of Stress (Safety, Threat) and Distractor-Type (Congruent-Arrow, Incongruent-Arrow, Diamond) on accuracy (percentage correct) and RT (on correct trials). The Huynh-Feldt correction for nonsphericity was employed as necessary (note: uncorrected *dfs* are reported). Given near-ceiling accuracy, RT proved the more sensitive performance metric.

There was a significant effect of Distractor-Type on accuracy, $F(2,62)=17.5$, $p<.001$. Pairwise contrasts indicated that incongruent-arrows ($M=.96$, $SEM=.008$) produced less accurate performance ($ps<.001$) than congruent-arrows ($M=.98$, $SEM=.005$) or diamond control stimuli ($M=.98$, $SEM=.005$), which did not differ from one another ($p=.61$). But there was no effect of Stress on accuracy (Stress, $p=.92$; Stress \times Distractor-Type, $p=.37$).

Distractor-Type exerted a similar impact on RT, $F(2,62)=250.0$, $p<.001$. Pairwise contrasts indicated that incongruent-arrows ($M=672$ ms, $SEM=8.8$) led to slower performance ($ps<.001$) than congruent-arrows ($M=624.0$ ms, $SEM=8.7$) or diamonds ($M=633.6$ ms, $SEM=8.5$), which also differed from one another ($p<.001$). As noted in the main report, at the group-level there was a trend for participants to respond ~2ms more quickly under Threat ($M=642.8$ ms, $SEM=8.6$) compared to Safety ($M=644.9$ ms, $SEM=8.6$), $p=.09$. But there was no interaction between Stress and Distractor-Type, $p=.81$.

A similar pattern was obtained for analyses incorporating visual field or sex as factors (not reported). Given the absence of substantial interactions with Stress at the behavioral level, physiological and other analyses were conducted on data collapsed across Distractor-Type in order to maximize SNR.

Correction for Multiple Comparisons

Preliminary hypothesis testing was performed using contrasts (Threat vs. Safe) conducted on GFP averaged separately for each condition and component window. The hypothesized double dissociation was assessed by testing the Stress (Threat, Safe) \times Component (Early, Late) interaction. To minimize family-wise error (FWE) across the electrode array, components that failed to show evidence of significant stress modulation were omitted from subsequent electrode-wise mean and individual differences tests.

Mean differences. To identify stress-sensitive scalp regions for each component, we then conducted electrode-wise contrasts comparing mean voltage during periods of threat and safety (2 electro-oculogram electrodes were omitted). F -statistics (i.e., Student's t^2) are reported to eliminate differences in component sign across the scalp. Whole-scalp ('mapwise') FWE was controlled using a permutation-based procedure for cluster extent (Nichols and Holmes, 2001; Nichols and Hayasaka, 2003). For analyses of mean differences, clusters were defined as sets of contiguous sensors surpassing an uncorrected electrode-wise threshold, $F(1,31)=4.16$, $p=.05$ ¹. On each permutation, condition labels were randomized (within-subject), electrode-wise F -tests of the mean difference (Safe vs. Threat) were computed, clusters of suprathreshold electrodes were identified, and the maximum cluster extent across the scalp was recorded. For each ERP component, a scalp-wise null distribution was generated using 5,000 permutations. The probability of obtaining the empirically obtained clusters under the null hypothesis was determined by comparison with this distribution.

Joint test of mean and individual differences. A conceptually similar permutation-based procedure was used to identify regions where changes in activity were predictive of stress-induced changes in performance (while controlling FWE at the cluster level). On each permutation, condition labels were randomized, electrode-wise F -tests of the mean difference (Threat vs. Safe) were used to identify electrodes that were sensitive to stress at the group-mean level, clusters of suprathreshold electrodes were identified ($p=.05$, uncorrected), mean difference scores were computed across electrodes within each cluster, the brain-behavior correlation was computed using Spearman's ρ , and the maximum absolute ρ across the scalp was recorded. Parametric correlations (Pearson's r) yielded similar results (not reported). For each combination of behavioral measure (e.g., RT) and ERP component, a null distribution was generated using 5,000 permutations. The probability of obtaining the empirically obtained brain-behavior correlation under the null hypothesis was determined by comparison with this distribution. Consistent with prior neurophysiological research (e.g., Gray et al., 2003; Nitschke et al., 2006; Sarinopoulos et al., 2006; Dolcos et al., 2008; Fox et al., 2008), the uncorrected joint significance ('uncorrected- p ') of obtaining the mean difference *and* correlation under the null hypothesis was estimated using Fisher's technique (Fisher, 1948); assuming independence, the minimum probability of both the mean difference ($p_1 < .05$) and correlation ($p_2 < .05$) occurring by chance was $p_1 \times p_2 < .0025$ (equivalent to Bonferroni correcting for 20 orthogonal tests across the electrode array).

¹ Mean three-dimensional electrode positions provided by the EEG net manufacturer (<http://www.egi.com>) were normalized to a unit sphere in BESA (<http://www.besa.de>) and then expanded to a sphere with a radius of 85mm to approximate the size of the average adult head. Pairwise Euclidean distances were then computed between all electrodes. Electrodes within 33.5mm of another were considered contiguous, based on comparison with the known location of sensors in the geodesic array.

Supplementary Table S1. Regional changes in evoked neural activity under stress.

<i>Component</i>	Cluster	Extent ^a	Representative Electrodes	<i>Stress, Electrode-wise</i>		<i>Stress, Cluster Mean</i>		<i>Stress × Hemisphere</i>		
				<i>F</i> _{1,31}	<i>p</i>	<i>F</i> _{1,31}	<i>p</i>	<i>Whole-scalp corrected p</i>	<i>F</i> _{1,31}	<i>p</i>
<i>NI (184-236ms)</i>	Zenith ^b	34	Fz-F3, FCz-FC4, Cz-C5, CPz-C3, Pz	4.5-50.5	.04-.00000006	44.2	<.001	<.001	n/a	n/a
	R Mastoid ^b	9	P10, PO8, Oz, O2, TP8, TP10	4.5-16.5	.04-.003	43.0	<.001	.07	13.1	.001
<i>P3 (316-488ms)</i>	Centroparietal	11	CPz-CP3, POz, PO3, Pz-P2	4.3-14.7	.05-.0006	14.2	.001	.05	n/a	n/a
	R Frontal ^d	4	F8, F10, FC6	4.3-7.9	.05-.01	13.2	.001	.24	5.5	.03

R = Right-Hemisphere. ^a Number of electrodes. ^b The majority of these electrodes also survived a whole-scalp false discovery rate (FDR) of $q = .05$, $p_{\text{critical}} = .016$ (Nichols, 2007). ^c The P3 R Frontal cluster survived whole-scalp correction for the joint test of mean and individual differences (i.e., brain-behavior correlations; see the main report) and is described here for comparison purposes.

Supplementary References

- Dolcos F, Diaz-Granados P, Wang L, McCarthy G (2008) Opposing influences of emotional and non-emotional distracters upon sustained prefrontal cortex activity during a delayed-reponse working memory task. *Neuropsychologia* 46:326-335.
- Fisher RA (1948) Combining independent tests of significance. *The American Statistician* 2:30.
- Fox AS, Shelton SE, Oakes TR, Davidson RJ, Kalin NH (2008) Trait-like brain activity during adolescence predicts anxious temperament in primates. *PLoS ONE* 3:e2570.
- Gray JR, Chabris CF, Braver TS (2003) Neural mechanisms of general fluid intelligence. *Nat Neurosci* 6:316-322.
- Nichols T (2007) False discovery rate procedures. In: *Statistical parametric mapping. The analysis of functional brain images* (Friston K, Ashburner J, Kiebel S, Nichols T, Penny W, eds), pp 246-252. NY: Elsevier.
- Nichols T, Hayasaka S (2003) Controlling the familywise error rate in functional neuroimaging: a comparative review. *Stat Methods Med Res* 12:419-446.
- Nichols TE, Holmes AP (2001) Nonparametric permutation tests for functional neuroimaging: a primer with examples. *Hum Brain Mapp* 15:1-25.
- Nitschke JB, Sarinopoulos I, Mackiewicz KL, Schaefer HS, Davidson RJ (2006) Functional neuroanatomy of aversion and its anticipation. *Neuroimage* 29:106-116.
- Sarinopoulos I, Dixon GE, Short SJ, Davidson RJ, Nitschke JB (2006) Brain mechanisms of expectation associated with insula and amygdala response to aversive taste: Implications for placebo. *Brain Behav Immun* 20:120-132.
- Shackman AJ, McMennamin BW, Maxwell JS, Greischar LL, Davidson RJ (2010) Identifying robust and sensitive frequency bands for interrogating neural oscillations. *Neuroimage* 51:1319-1333.