

Remote Sensing of Surface Currents Associated with the Chesapeake Bay Outfall Plume Using a Shore-Based HF Radar

Hans C. Graber
RSMAS—Applied Marine Physics
University of Miami
4600 Rickenbacker Causeway
Miami, FL 33149-1098
phone: (305) 361-4935 fax: (305) 361-4701 e-mail: hgrab@rsmas.miami.edu

Lynn K. Shay
RSMAS—Meteorology and Physical Oceanography
University of Miami
4600 Rickenbacker Causeway
Miami, FL 33149-1098
phone: (305) 361-4075 fax: (305) 361-4696 e-mail: lsay@rsmas.miami.edu

Brian K. Haus
RSMAS—Applied Marine Physics
University of Miami
4600 Rickenbacker Causeway
Miami, FL 33149-1098
phone: (305) 361-4935 fax: (305) 361-4701 e-mail: bhaus@rsmas.miami.edu

Award # N00014-96-1-1065

LONG-TERM GOAL

To understand the dynamics and temporal and spatial variability of the dynamics of the outflow plume and its subsequent transition to a coastal jet using the combination of VHF/HF radar observations as well as additional moored, shipborne and remotely sensed data.

SCIENTIFIC OBJECTIVES

1. To characterize the space/time scales of the outflow plume variability embedded within a mesoscale flow regime.
2. To interrelate remotely-sensed signatures from OSCAR/INSAR/Ship radar measurements by examining the salinity front and buoyant jet trapped against the coast.
3. To estimate horizontal advection, shear and vorticity associated with the mean and tidal flows.
4. To assess horizontal mixing effects between the fresh water from the outflow plume and the coastal ocean through the interaction of various current components.

Report Documentation Page

Form Approved
OMB No. 0704-0188

Public reporting burden for the collection of information is estimated to average 1 hour per response, including the time for reviewing instructions, searching existing data sources, gathering and maintaining the data needed, and completing and reviewing the collection of information. Send comments regarding this burden estimate or any other aspect of this collection of information, including suggestions for reducing this burden, to Washington Headquarters Services, Directorate for Information Operations and Reports, 1215 Jefferson Davis Highway, Suite 1204, Arlington VA 22202-4302. Respondents should be aware that notwithstanding any other provision of law, no person shall be subject to a penalty for failing to comply with a collection of information if it does not display a currently valid OMB control number.

1. REPORT DATE 1998	2. REPORT TYPE	3. DATES COVERED 00-00-1998 to 00-00-1998			
4. TITLE AND SUBTITLE Remote Sensing of Surface Currents Associated with the Chesapeake Bay Outfall Plume Using a Shore-Based HF Radar		5a. CONTRACT NUMBER			
		5b. GRANT NUMBER			
		5c. PROGRAM ELEMENT NUMBER			
6. AUTHOR(S)		5d. PROJECT NUMBER			
		5e. TASK NUMBER			
		5f. WORK UNIT NUMBER			
7. PERFORMING ORGANIZATION NAME(S) AND ADDRESS(ES) University of Miami, Rosenstiel School of Marine and Atmospheric Science, 4600 Rickenbacker Causeway, Miami, FL, 33149		8. PERFORMING ORGANIZATION REPORT NUMBER			
9. SPONSORING/MONITORING AGENCY NAME(S) AND ADDRESS(ES)		10. SPONSOR/MONITOR'S ACRONYM(S)			
		11. SPONSOR/MONITOR'S REPORT NUMBER(S)			
12. DISTRIBUTION/AVAILABILITY STATEMENT Approved for public release; distribution unlimited					
13. SUPPLEMENTARY NOTES See also ADM002252.					
14. ABSTRACT					
15. SUBJECT TERMS					
16. SECURITY CLASSIFICATION OF:			17. LIMITATION OF ABSTRACT Same as Report (SAR)	18. NUMBER OF PAGES 4	19a. NAME OF RESPONSIBLE PERSON
a. REPORT unclassified	b. ABSTRACT unclassified	c. THIS PAGE unclassified			

5. To examine the residual patterns of the surface layer outflow and how they are influenced by varying wind regimes;

APPROACH

HF radars provide a unique opportunity to measure surface currents, surface gravity waves and wind speed and direction at high spatial and temporal resolution and over a large domain. The HF mode of the OSCAR system was deployed for two months (October and November 1997) at Fort Story (Cape Henry) and the US Navy Fleet Combat Training Center Atlantic. These locations were chosen to catch the plume as it emerges from the bay and turns southward due to ambient flow and Coriolis forcing. Two additional HF radars, the SeaSonde system (Naval Postgraduate School) and the multi-frequency system (University of Michigan) were colocated with the OSCAR. This study will permit intercomparison of three HF radar systems with different technical implementations, namely, single frequency, linear phased-array, single frequency, direction finding technique and the multi-frequency, linear phased-array.

WORK COMPLETED

1. A data report describing the OSCAR measurements for the first Intensive Observation Period of COPE-I (September 1996) is completed.
2. A summer student study on the analysis of a SAR image of the Chesapeake Bay estuary plume was completed.
3. A manuscript on the strength of the M_2 tidal currents was submitted.
4. All surface vector currents from COPE-III have been processed and quality controlled and tidal currents, mean (low-pass), band-pass and high-pass current fields were computed.
5. All Doppler spectra for the two-month long measurement period (COPE-III) have been processed and the total energy under the first and second-order peaks are computed.
6. Intercomparison of three radar system is in progress.

RESULTS

Our results from the first measurement period (COPE-I) show that the surface currents in the Chesapeake mouth region are forced by a combination of tides, river discharge, buoyancy and wind. The primary tidal constituent is the M_2 tide which has an amplitude of ~ 21 cm/s in the east-west direction. Figure 1 shows the measured tidal ellipses for the M_2 and K_1 constituent during COPE-I. The rotary nature of the K_1 tide is much stronger than for the M_2 tide over much of the domain.

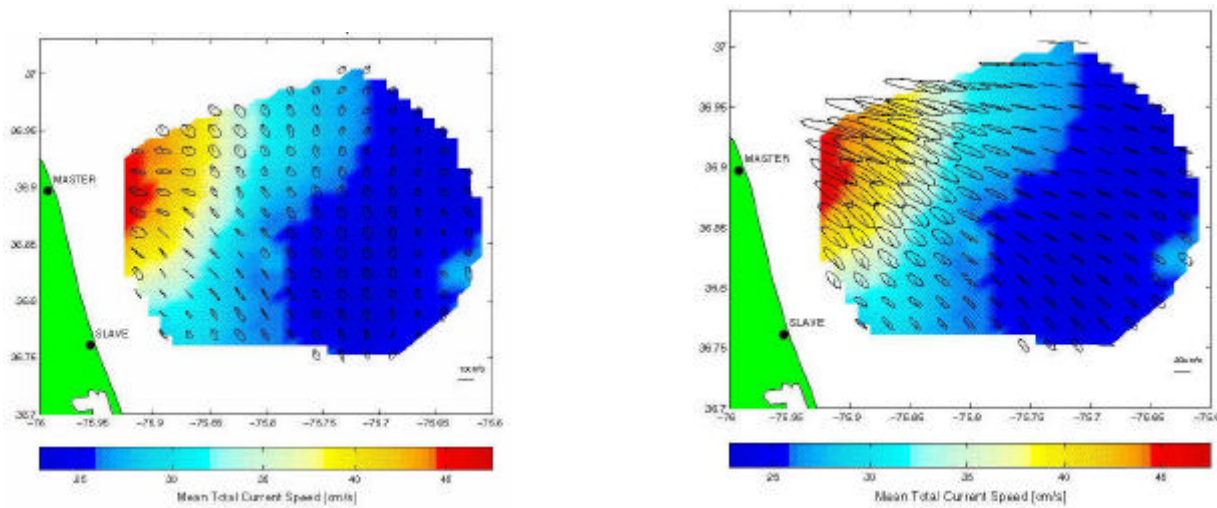


Figure 1: The K_1 (left panel) and M_2 (right panel) tidal ellipses measured during the COPE-I experiment (Haus et al. 1998).

The semi-diurnal tidal currents are highly correlated over much of the HF-radar domain. Complex correlation analysis indicate a consistent anticyclonic veering of the M_2 component. Tidal vorticities associated with the M_2 constituent were $\pm 0.25 f$ where f is the local Coriolis parameter. From ADCP analyses in the HF-radar domain we find that the semi-diurnal tidal currents are pre-dominantly barotropic in this region. Figure 2 shows the complex correlation coefficients and phases from the COPE-I measurements relative to cell 125 in the strong tidal regime.

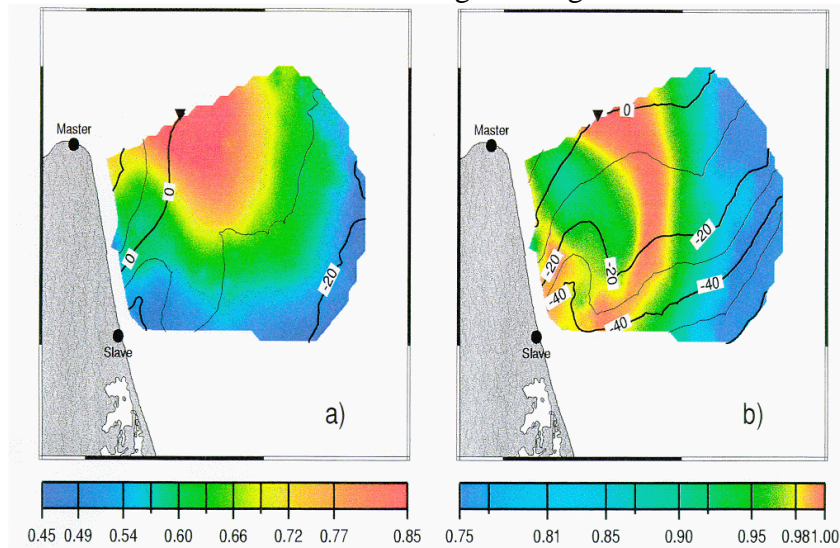


Figure 2: Complex correlation coefficients (color) and phases (contours) from COPE-I relative to cell 125 (triangle) in the strong tidal regime for (a) observed surface currents and (b) M_2 tidal currents (Shay et al. 1998).

IMPACT/APPLICATION

The studies of high-resolution surface current and wave height estimates with HF radar systems provide a continuous new look at small-scale dynamics affecting coastal and nearshore processes. From the tidal analysis we can describe the spatial variability of the dominant tidal components in this region. In

particular our measurements show the directivity of the tidal flow as a function of offshore distance as well as the domination of a single tidal component (M_2) versus mixed tidal conditions.

TRANSITIONS

We continue to collaborate with both NRL-Washington and NRL-Stennis in providing surface current measurements for the analysis of other remote sensing, shipboard and in-situ measurements.

RELATED PROJECTS

The successful applications of the HF-radar system to coastal oceanography led to the development of a new multi-frequency HF radar system under the STTR program.

REFERENCES

Haus, B.K., H.C. Graber, L.K. Shay, S. Nikolic and J. Martinez, 1998: Ocean surface current observations with HF Doppler radar during the Chesapeake Outflow Plume Experiment (COPE-I). **RSMAS Tech. Rep. 98-003**, University of Miami, 71pp.

Shay, L.K., T.M. Cook, B.K. Haus, H.C. Graber, J. Martinez, and Z.R. Hallock, 1998: The strength of the M_2 tide at the Chesapeake Bay. In preparation.

PUBLICATIONS

Harvey, R.S., 1998: Analysis of a SAR image of the Chesapeake Bay estuary discharge plume. Summer Undergraduate Fellowship Program Report, University of Miami, 18pp.

Haus, B.K., H.C. Graber, L.K. Shay, S. Nikolic and J. Martinez, 1998: Ocean surface current observations with HF Doppler radar during the Chesapeake Outflow Plume Experiment (COPE-I). **RSMAS Tech. Rep. 98-003**, University of Miami, 71pp.

Marmorino, G.O., L.K. Shay, B.K. Haus, R.A. Handler, H.C. Graber, and M.P. Horne, 1998: An EOF analysis of HF Doppler radar current measurements of the Chesapeake Bay outflow. *Cont. Shelf Res.*, in press.

Shay, L.K., T.M. Cook, B.K. Haus, H.C. Graber, J. Martinez, and Z.R. Hallock, 1998: The strength of the M_2 tide at the Chesapeake Bay. In preparation.