

Land Forces Planning Factors

TO 3227

15 December 2010

Report Documentation Page

Form Approved
OMB No. 0704-0188

Public reporting burden for the collection of information is estimated to average 1 hour per response, including the time for reviewing instructions, searching existing data sources, gathering and maintaining the data needed, and completing and reviewing the collection of information. Send comments regarding this burden estimate or any other aspect of this collection of information, including suggestions for reducing this burden, to Washington Headquarters Services, Directorate for Information Operations and Reports, 1215 Jefferson Davis Highway, Suite 1204, Arlington VA 22202-4302. Respondents should be aware that notwithstanding any other provision of law, no person shall be subject to a penalty for failing to comply with a collection of information if it does not display a currently valid OMB control number.

1. REPORT DATE 15 DEC 2010		2. REPORT TYPE		3. DATES COVERED 00-00-2010 to 00-00-2010	
4. TITLE AND SUBTITLE Land Forces Planning Factors				5a. CONTRACT NUMBER	
				5b. GRANT NUMBER	
				5c. PROGRAM ELEMENT NUMBER	
6. AUTHOR(S)				5d. PROJECT NUMBER	
				5e. TASK NUMBER	
				5f. WORK UNIT NUMBER	
7. PERFORMING ORGANIZATION NAME(S) AND ADDRESS(ES) Military Operations Research Society (MORS), 1703 N. Beauregard St. Suite 450, Alexandria, VA, 22311				8. PERFORMING ORGANIZATION REPORT NUMBER	
9. SPONSORING/MONITORING AGENCY NAME(S) AND ADDRESS(ES)				10. SPONSOR/MONITOR'S ACRONYM(S)	
				11. SPONSOR/MONITOR'S REPORT NUMBER(S)	
12. DISTRIBUTION/AVAILABILITY STATEMENT Approved for public release; distribution unlimited					
13. SUPPLEMENTARY NOTES 2011 Force Structure Workshop, TASC Heritage Conference Center, Chantilly, VA, 24-27 January 2011					
14. ABSTRACT					
15. SUBJECT TERMS					
16. SECURITY CLASSIFICATION OF:			17. LIMITATION OF ABSTRACT	18. NUMBER OF PAGES	19a. NAME OF RESPONSIBLE PERSON
a. REPORT unclassified	b. ABSTRACT unclassified	c. THIS PAGE unclassified			

Purpose

- Derive planning factors that will assist in the design and utilization of Army and Marine Corps expeditionary forces.
- Use experience in OIF (Iraq) and OEF (Afghanistan) as the basis for the factors
- Use available data for an initial estimate
- Refine as additional data become available

Methodology

- Derive two factors
 - Army: BCT Force Equivalent (BFE)
 - Marine Corps: RCT Force Equivalent (RFE)
- A “force equivalent” includes a combat element (BCT or RCT) and the number personnel needed to maximize the capabilities of the combat unit in a sustained campaign.
 - This is essentially a theater brigade or regiment “slice”
- Divide the total strength in a theater by the number of BCTs and/or RCTs in the theater
 - This version includes military personnel and contractors.
 - Civilian employees will be added later

Data

- BCTs & RCTs:
 - Required Numbers from 4th Quarter of 2006 to 3rd Quarter of 2010
 - Actual Numbers from 2001/2003 to 3rd Quarter of 2010
- Military Personnel: Monthly strength for all years for both theaters
 - Source: Personnel Readiness Division, J-1
- Civilian Employees: Data have to be extracted
 - Source: JPERSTAT Monthly Reports
- Contractors:
 - Quarterly strength from 1st Quarter 2008 to 3rd Quarter 2010.
 - Source: Program Support Directorate, OUSD(AT&L)
- Data has been extracted from JPERSTAT SECRET
 - Was downgraded to UNCLASSIFIED at that point

Combat Zone Schematic

	Army BFE	Marine RFE	Allied BFE
Combat Increment	Brigade Combat Team	Regimental Combat Team	Allied brigade
Self Support Increment	Modular Support Brigades	Other MEB units	Allied support Units
Army Support Increment	Theater Sustainment Command	Army Support Units	Army Support Units

Assumptions

- Army BCTs and Advise and Assist Brigades (AABs) are to be supported
 - Security Brigades are part of the support
- Marine Regimental Combat Teams (RCTs) are to be supported
 - Air combat elements in a MAGTF are support
 - A MEU with one battalion is one-third of an RCT
 - Except for Navy personnel in a MAGTF, Navy support is off-shore
- Air Force essentially supports itself
- Coast Guard personnel are included in Navy data

Relationship of Army & Marine Factors

- Army BCT
 - Two infantry battalions
 - Average Strength of 3,600 military personnel
- Marine RCT
 - Three infantry battalions
 - Strength of 5,600 military personnel (including Sailors)
- It is assumed that an RFE = 1.5 BFEs

DOD Civilians in CENTCOM AOR

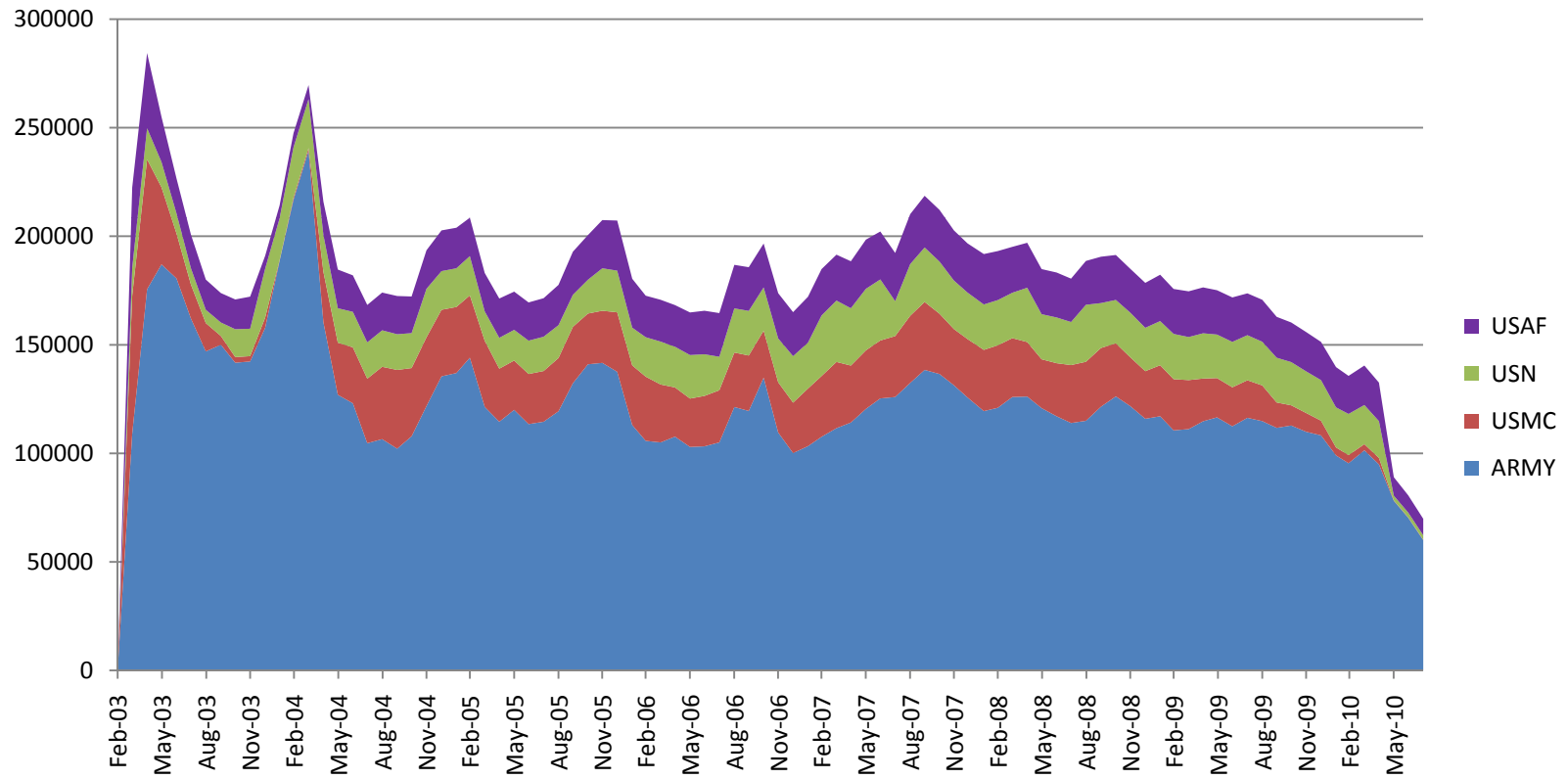
(As of: 31 March 2010)

	OSD/DAs	USA	USN	USMC	USAF	TOTAL
Iraq		1,943	70		150	
Afghanistan		1,368	48			
Middle East		725	900			
	1,250	4,036	1,016	50	150	6,504

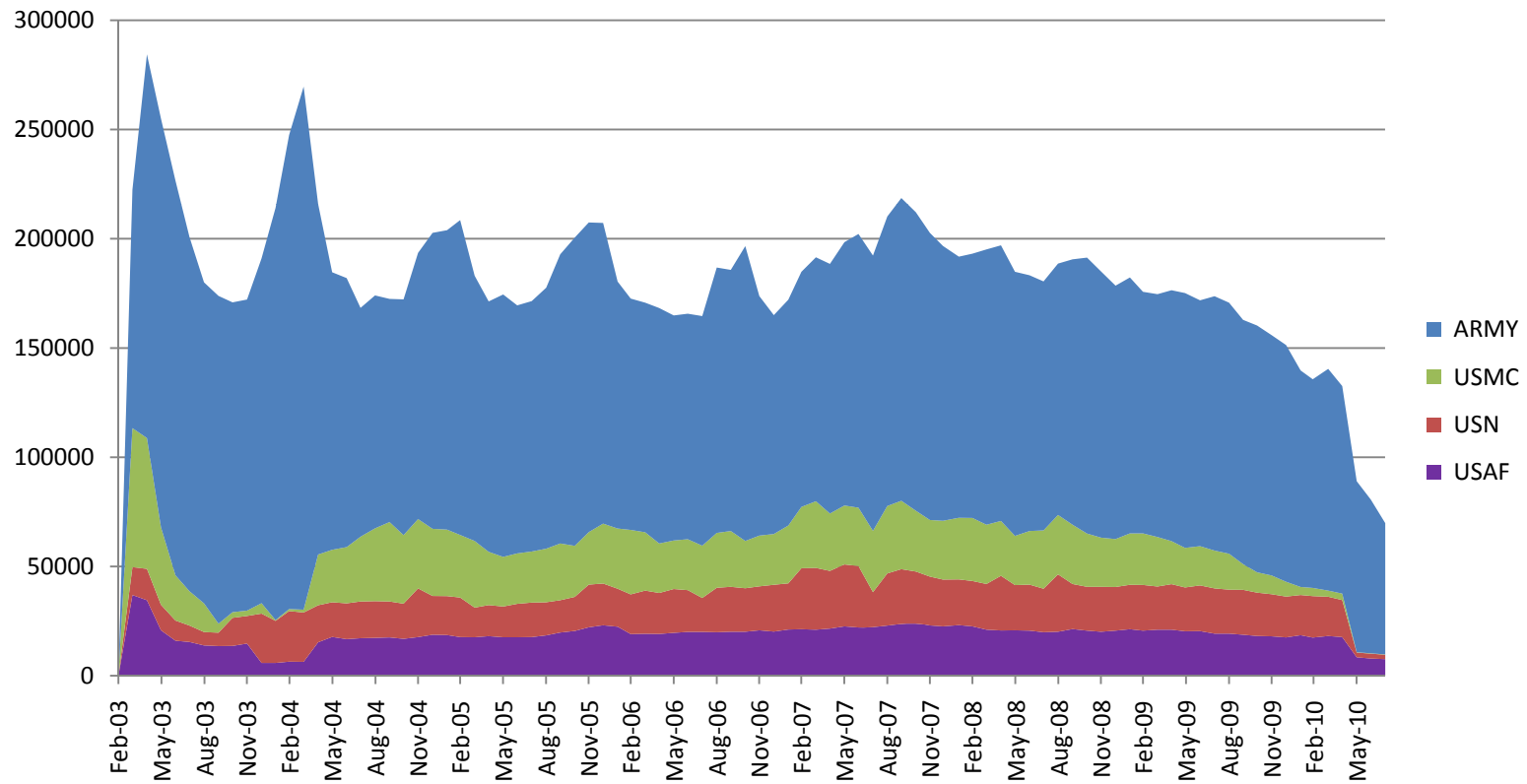
Civilian BFE for OIF: $2,000/10 = 200$

Operation Iraqi Freedom 2003 - 2010

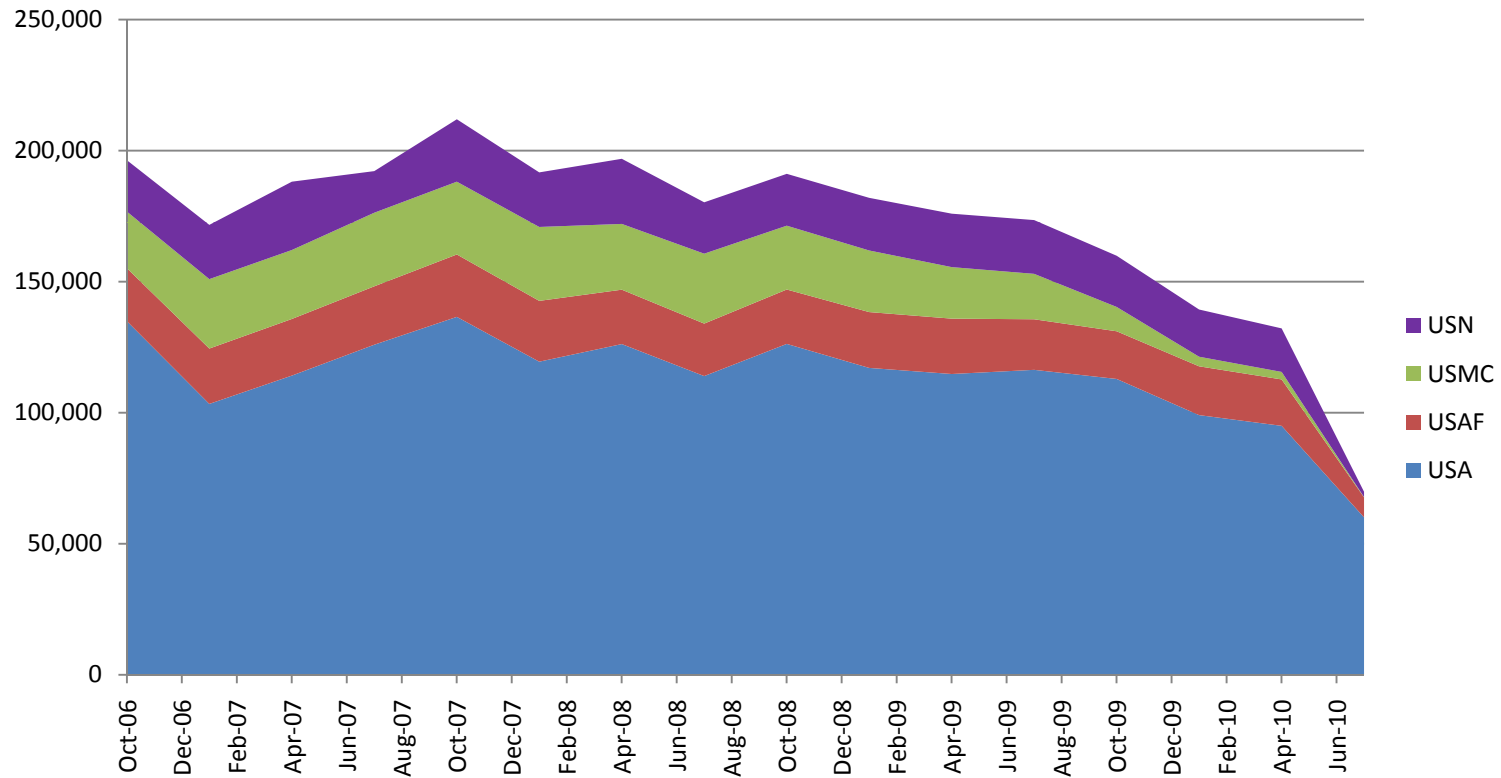
OIF – Military Personnel



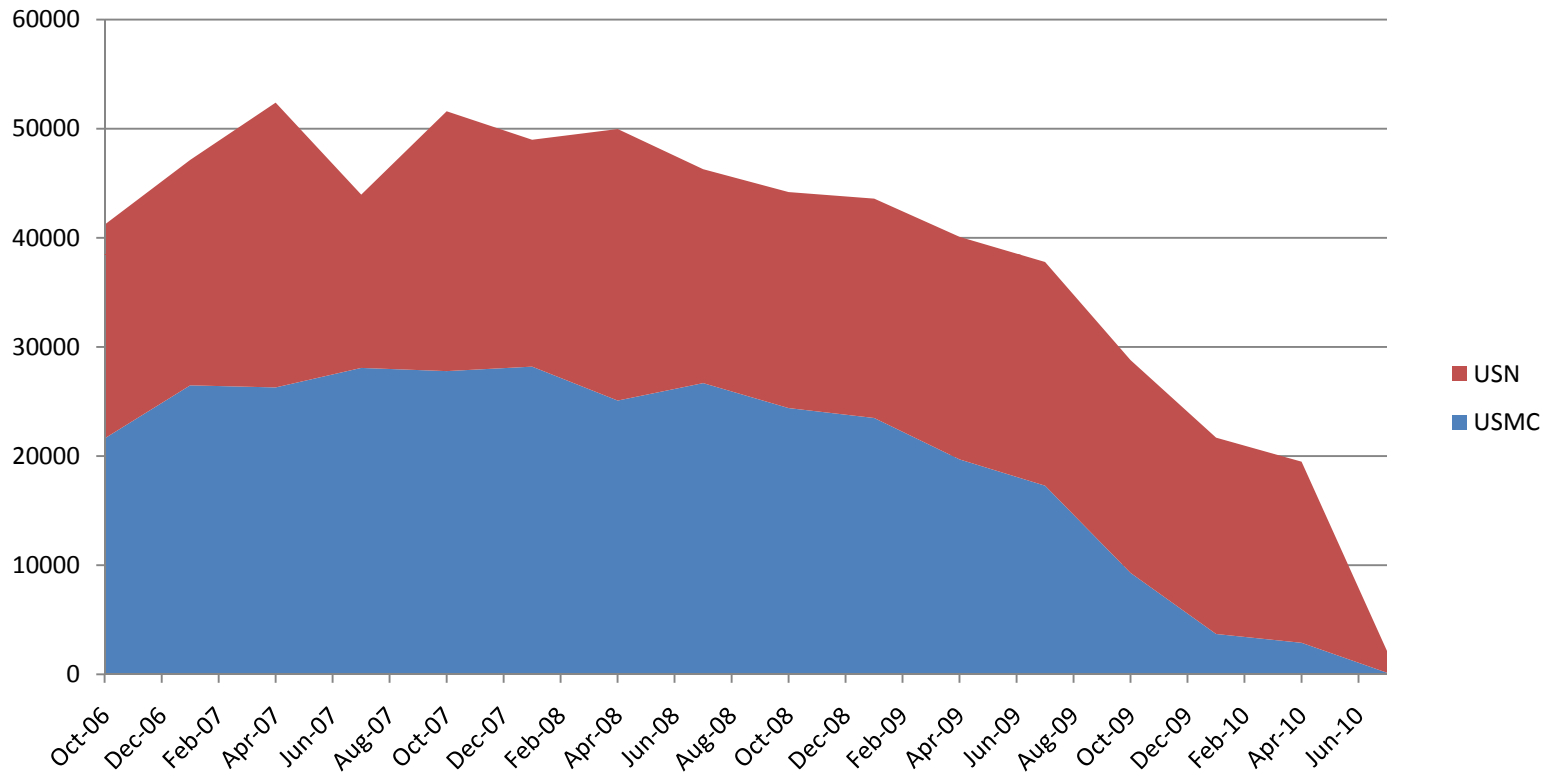
OIF – Military Personnel



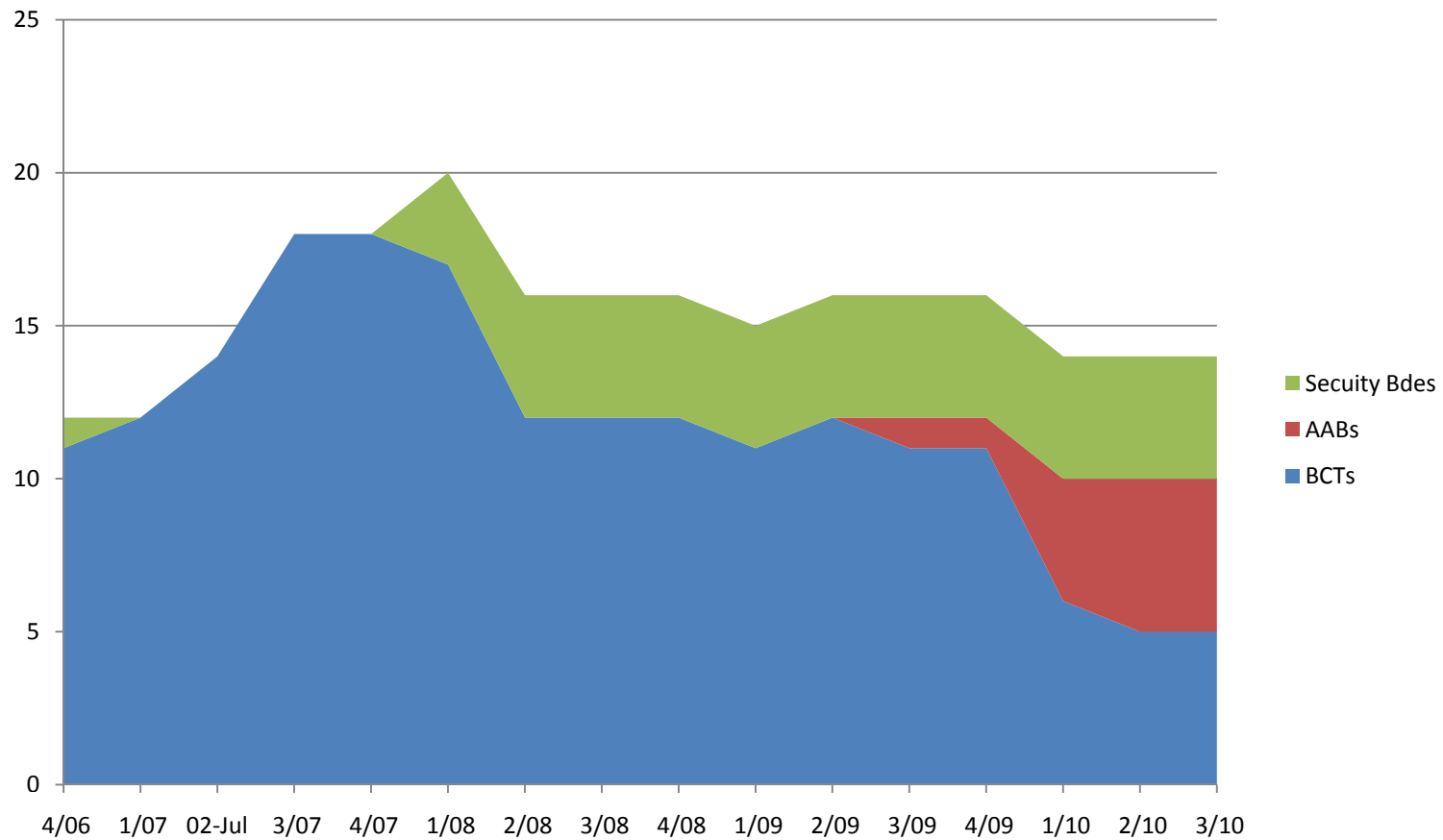
OIF Military Personnel 2007 – 2010



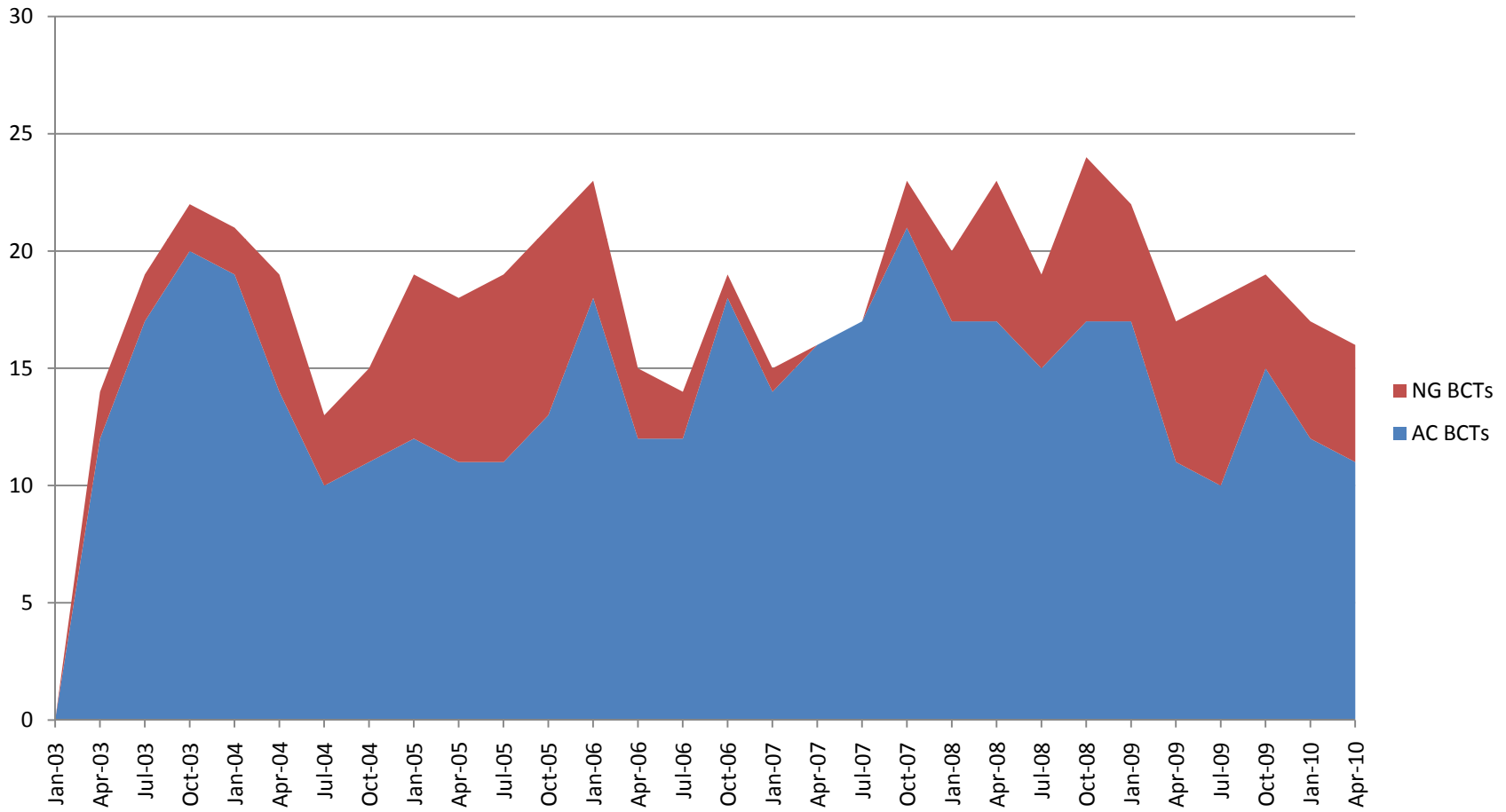
OIF – Marine & Navy Personnel



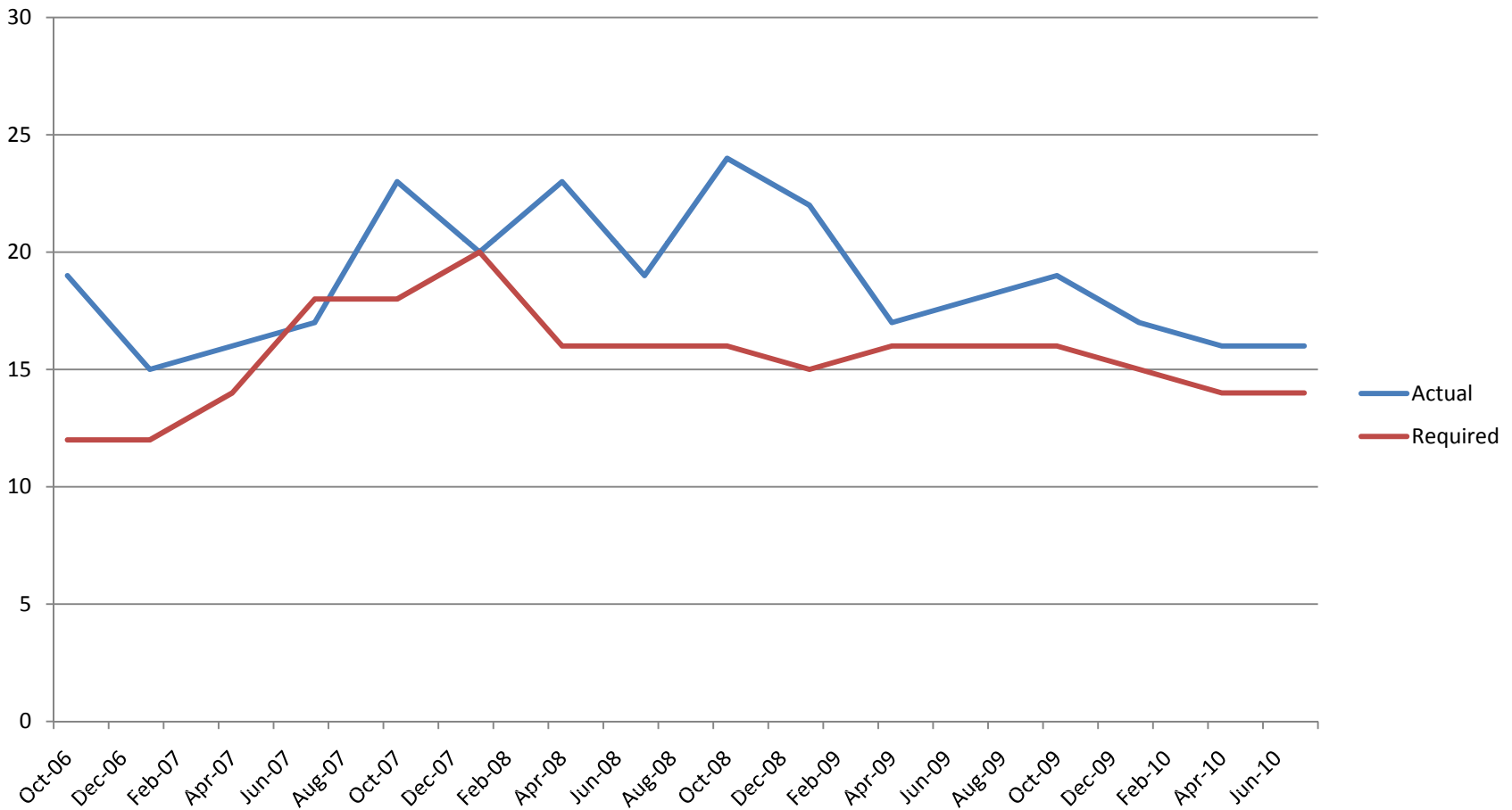
OIF – BCTs 2007 -2010



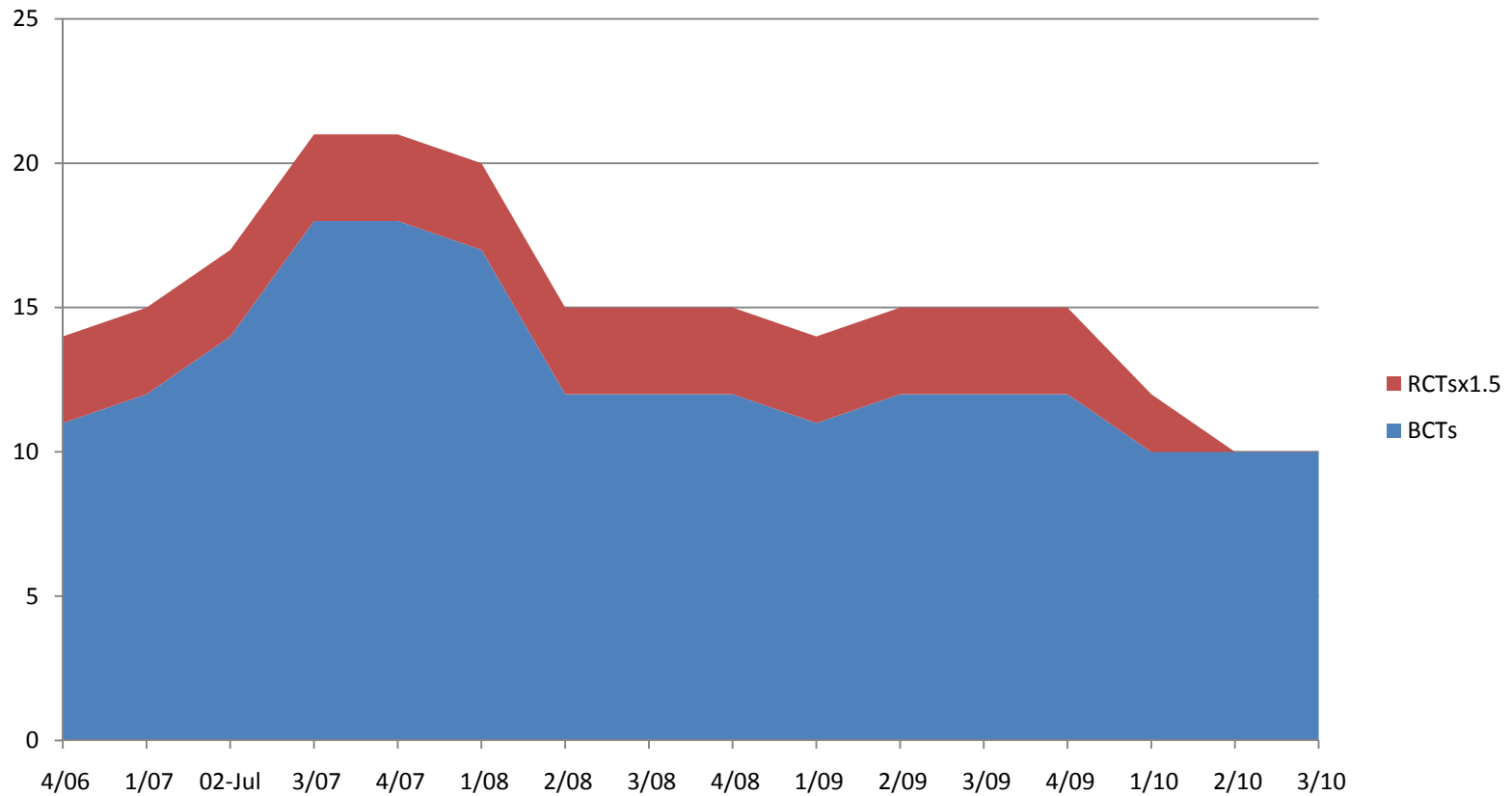
OIF – Actual BVCTs



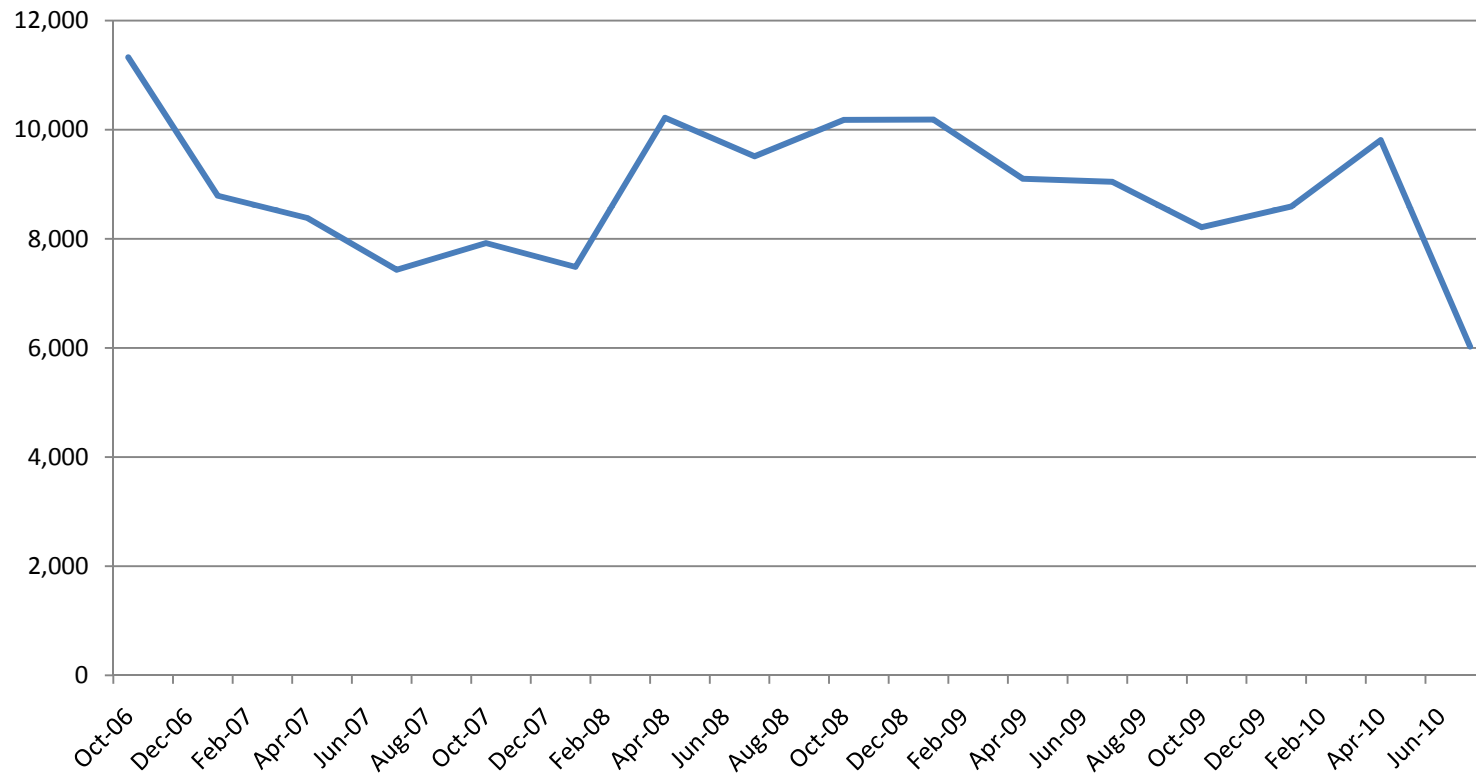
OIF - Comparison of BCT Data



OIF – BCT Equivalents 2007 - 2010

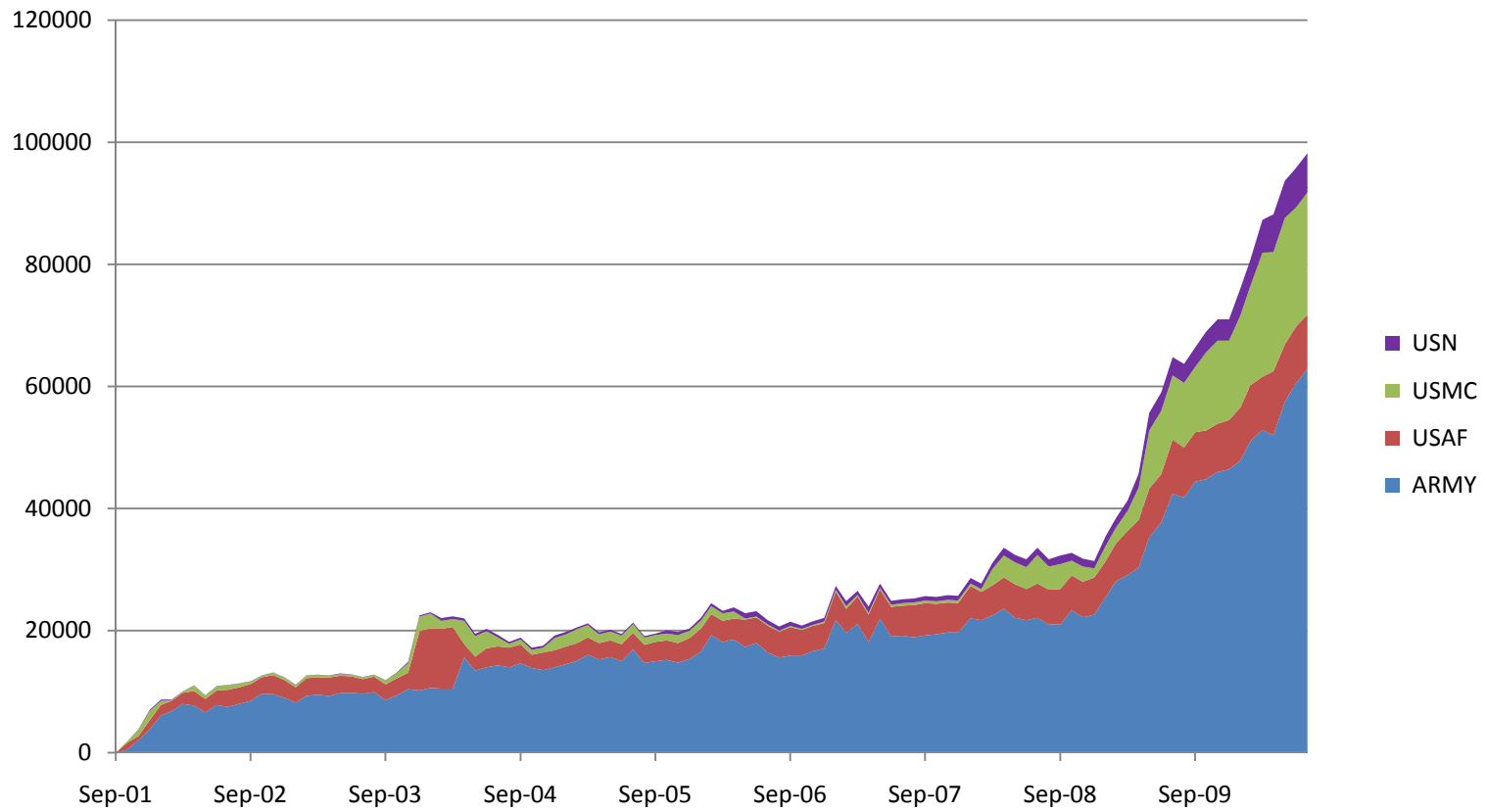


OIF – Military BFE Ratios

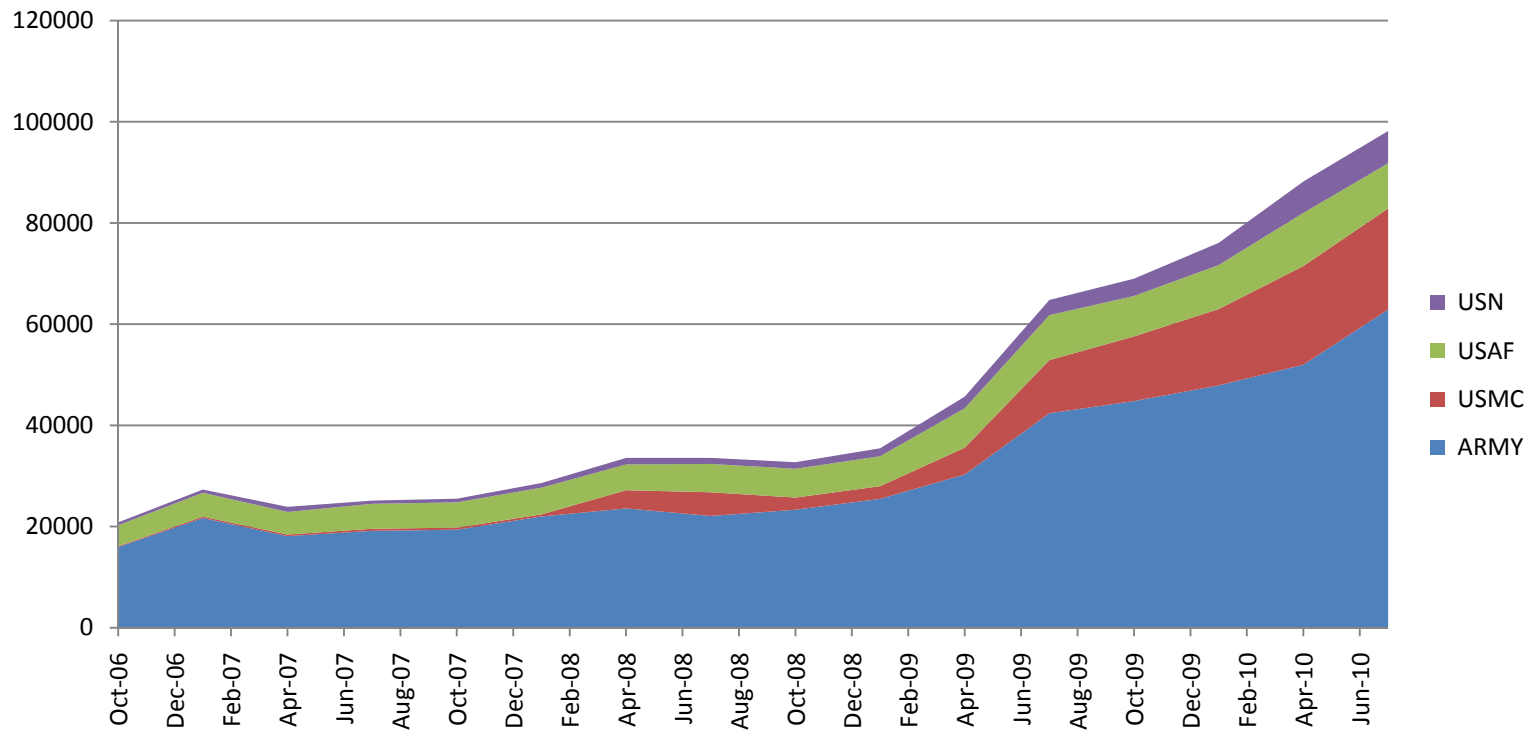


Operation Enduring Freedom Afghanistan

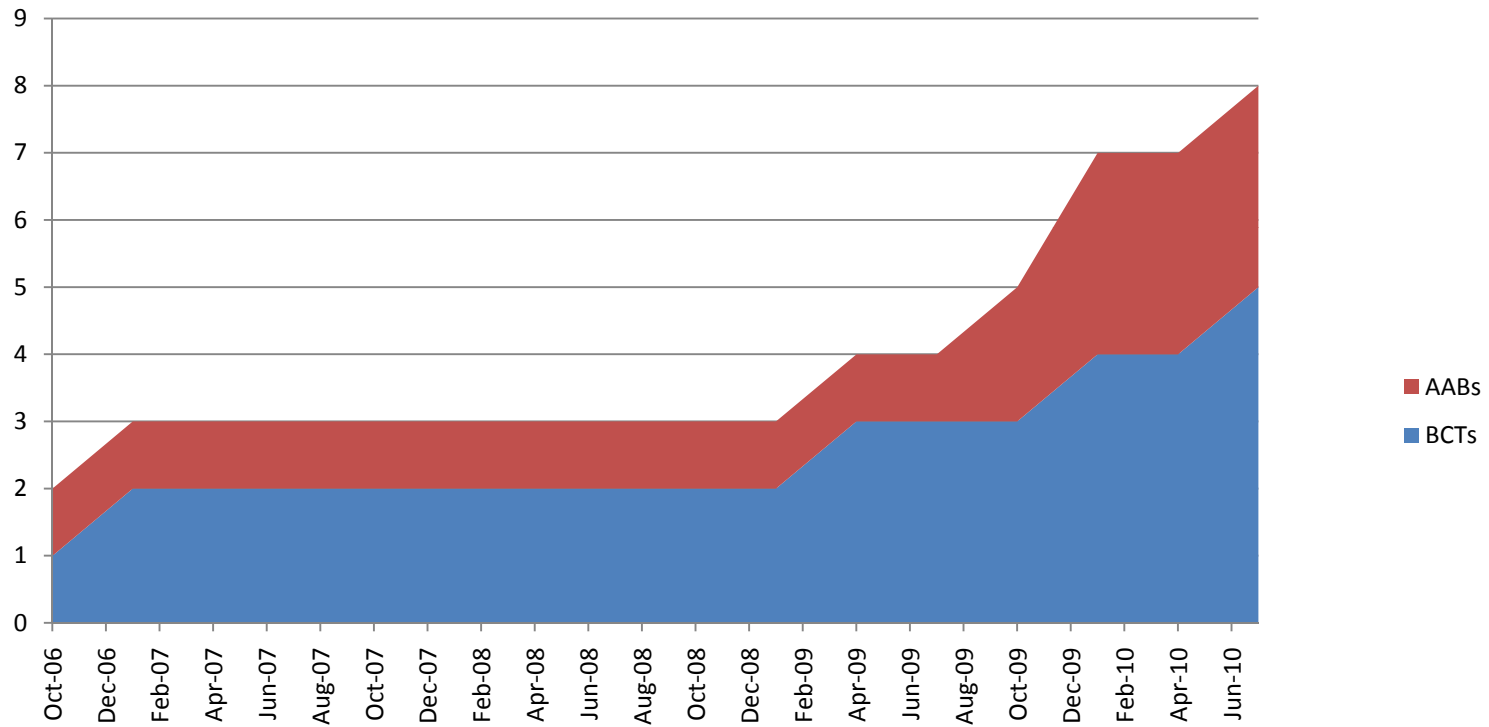
OEF – Military Personnel



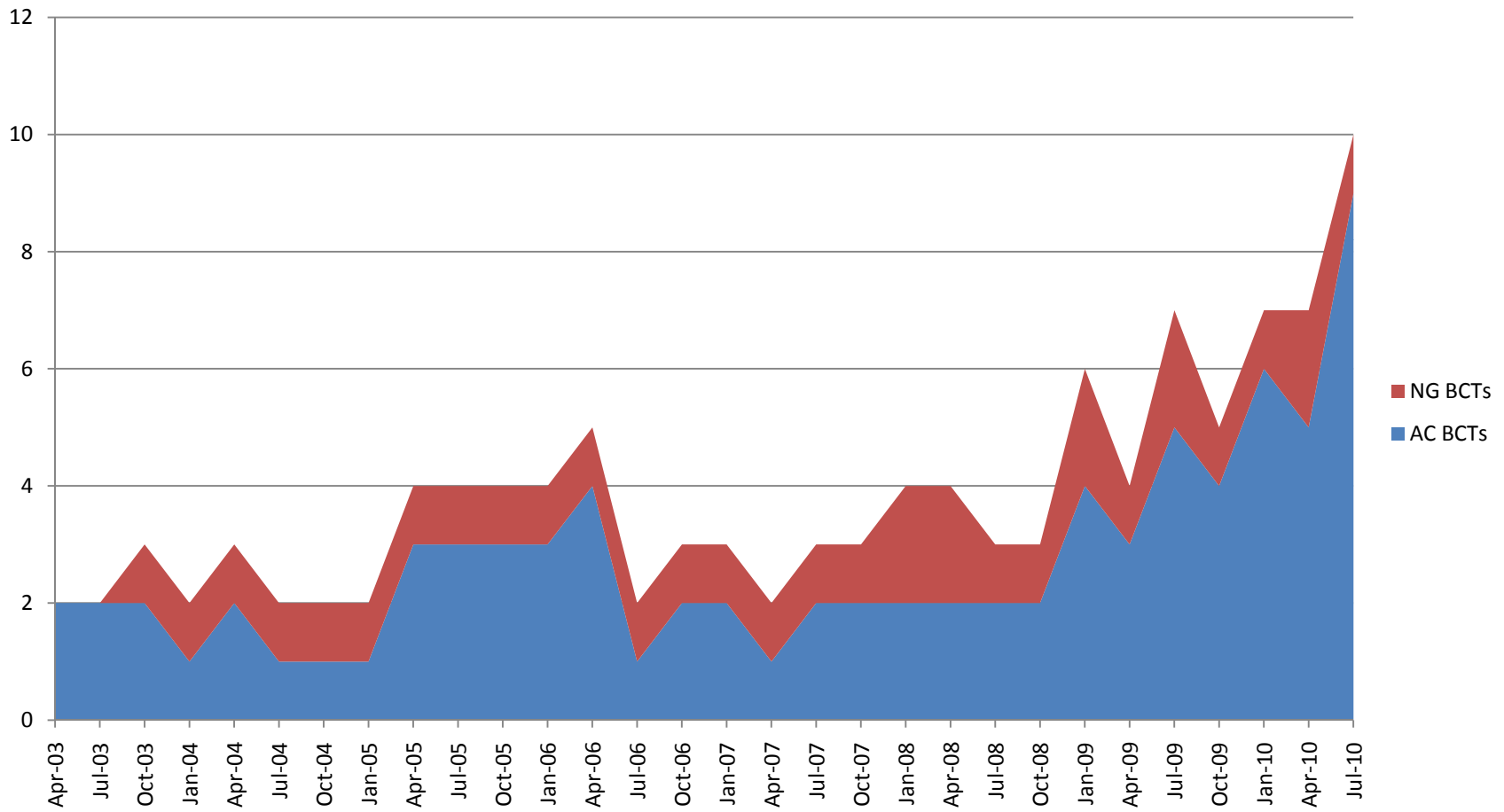
OEF – Military Personnel 4/08 – 2/10



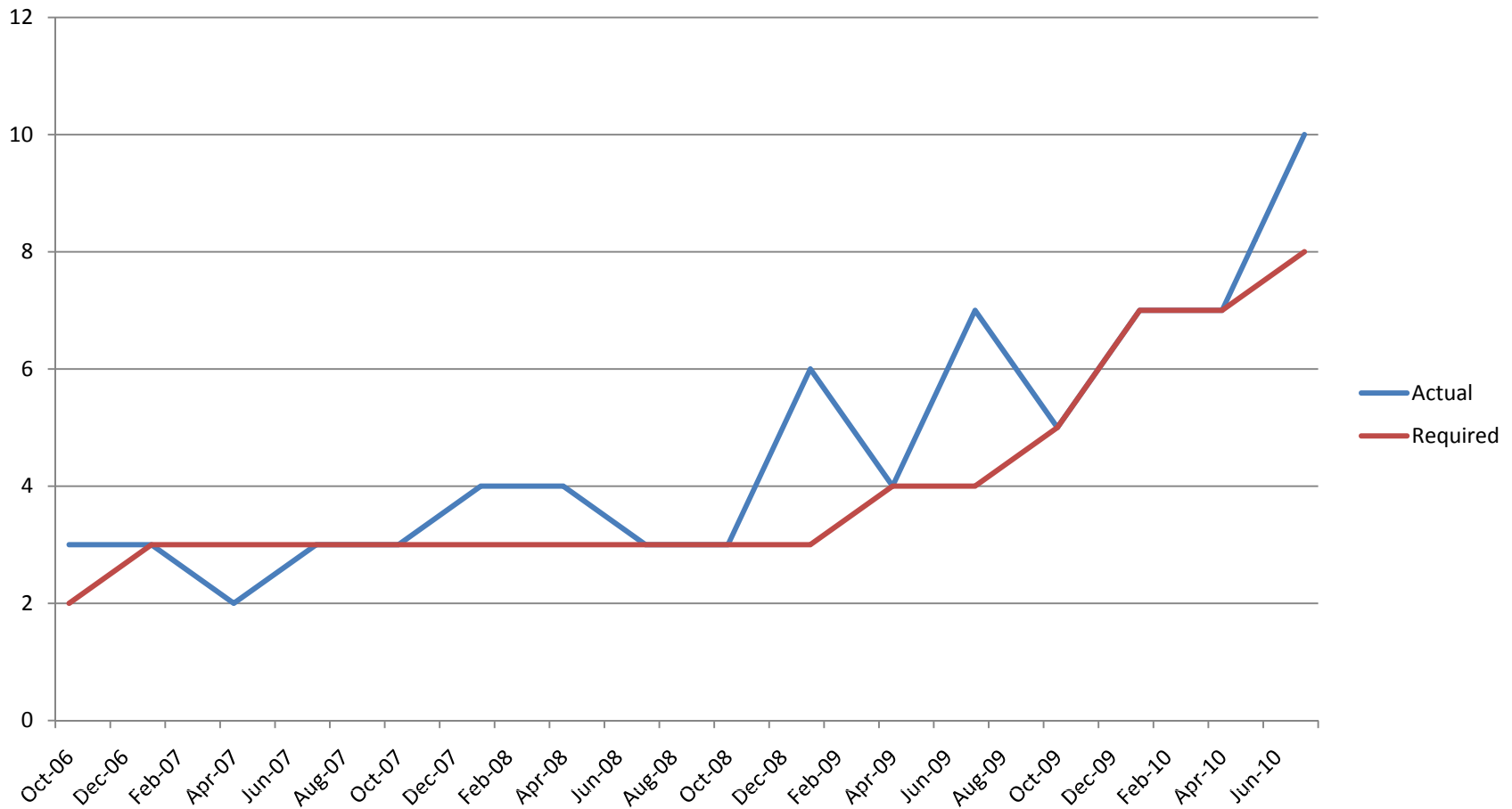
OEF – BCTs



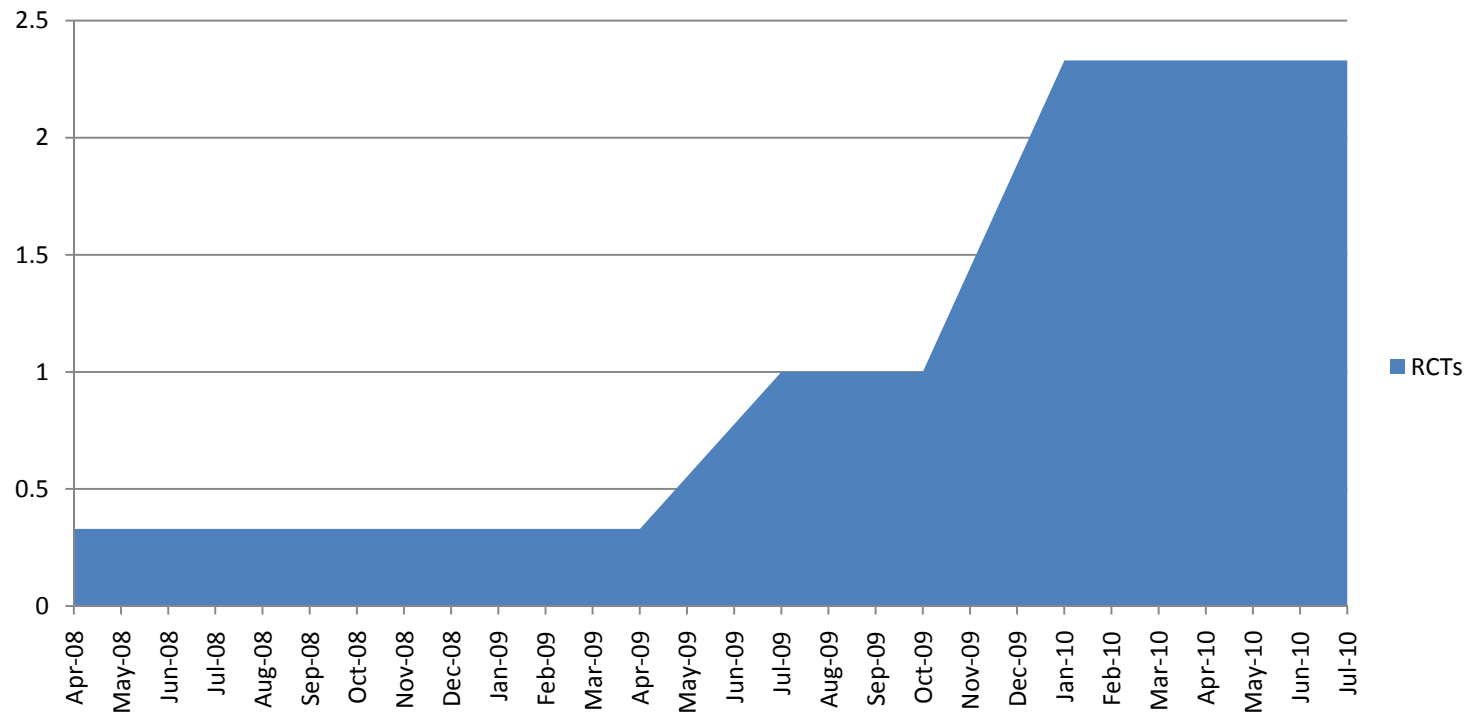
OEF – New BCTs



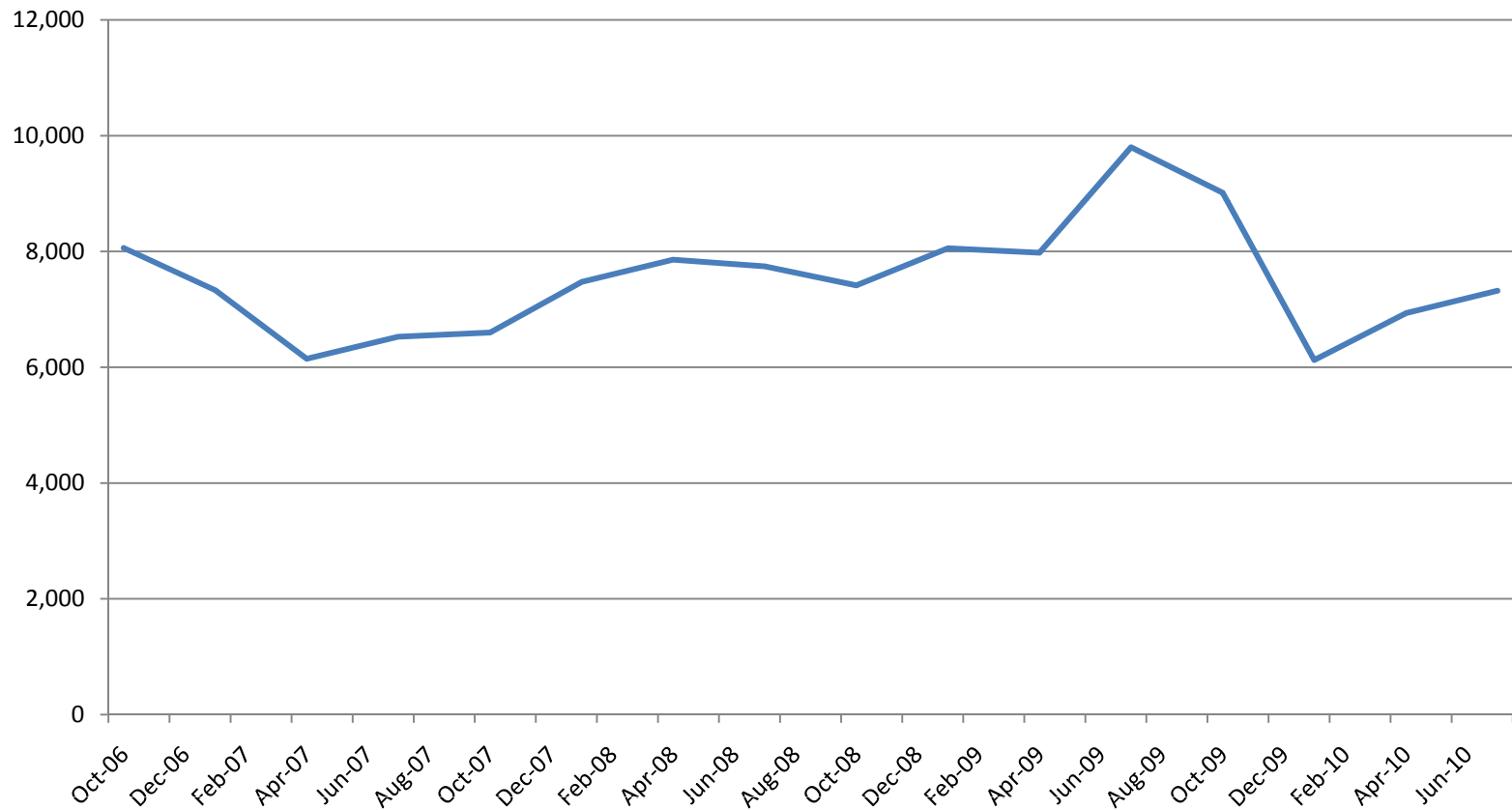
OEF – Comparison of BCT Data



OEF – USMC RCTs

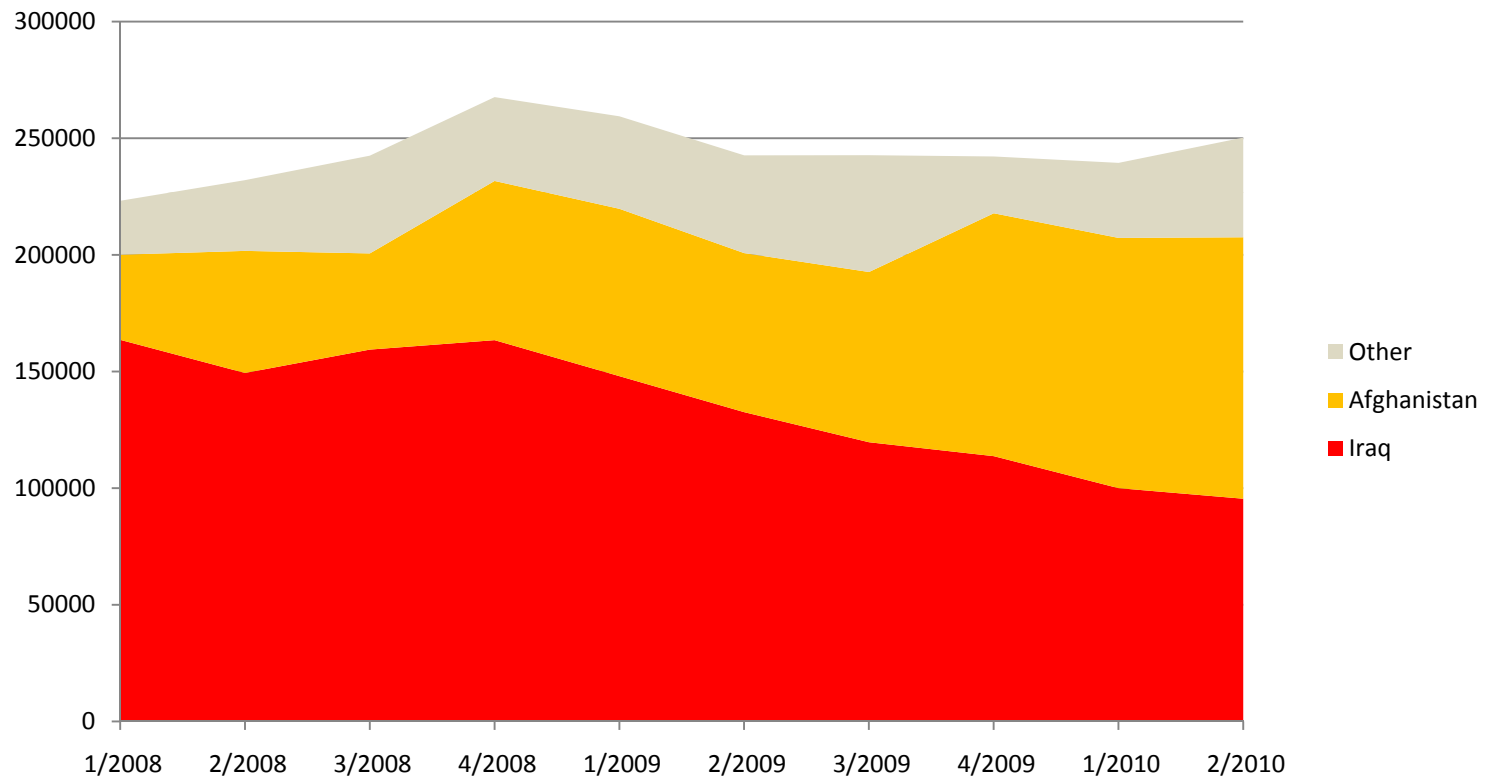


OEF – BFE Equivalents

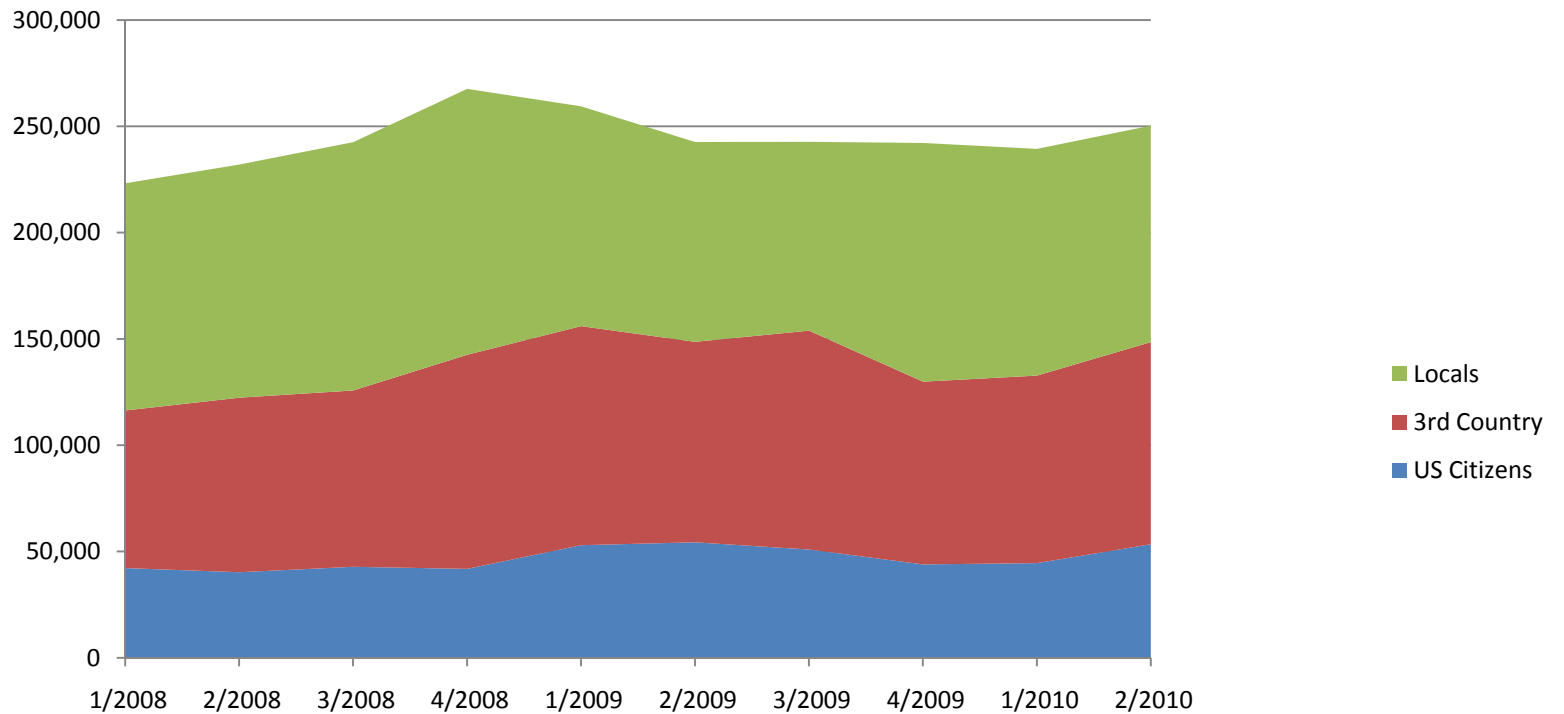


Contractors

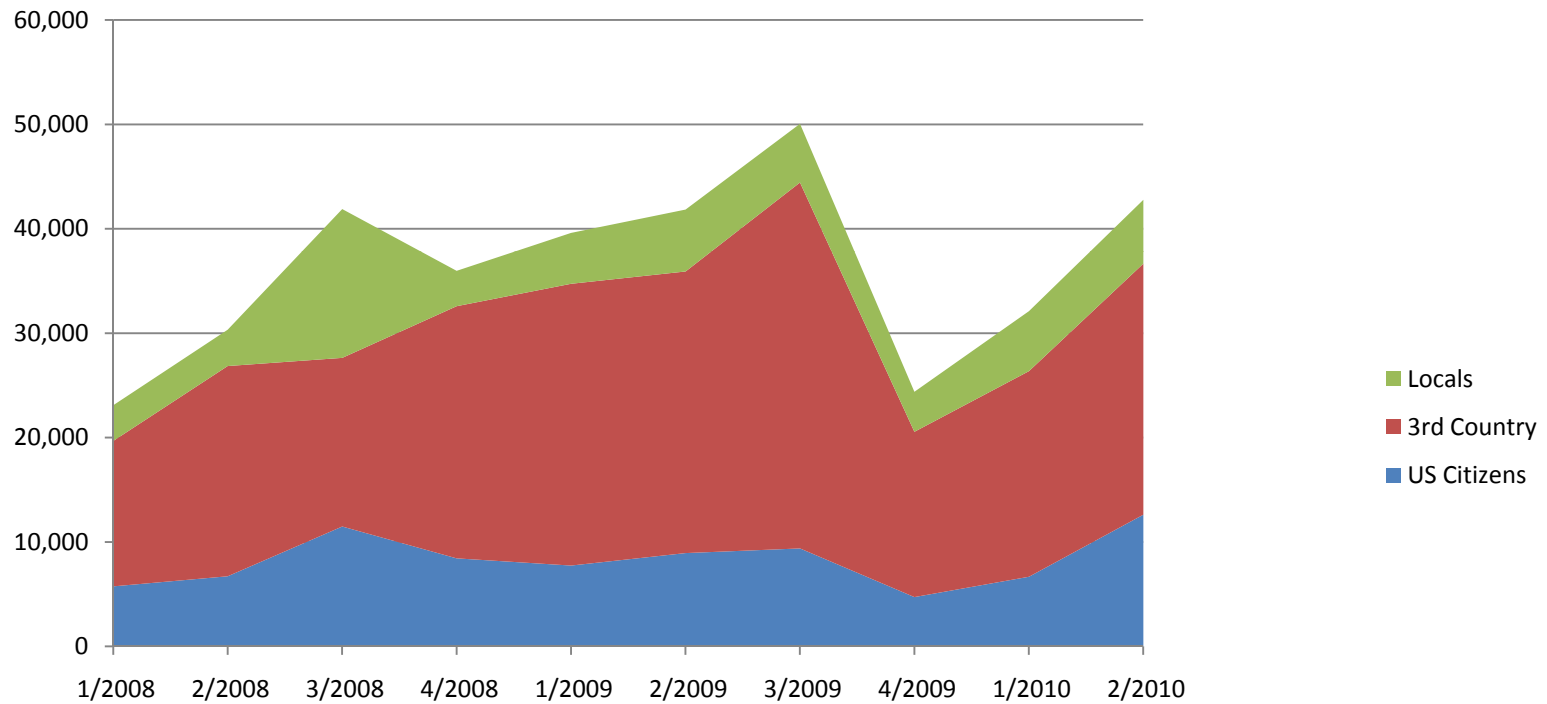
CENTCOM Contractors 2008-2010



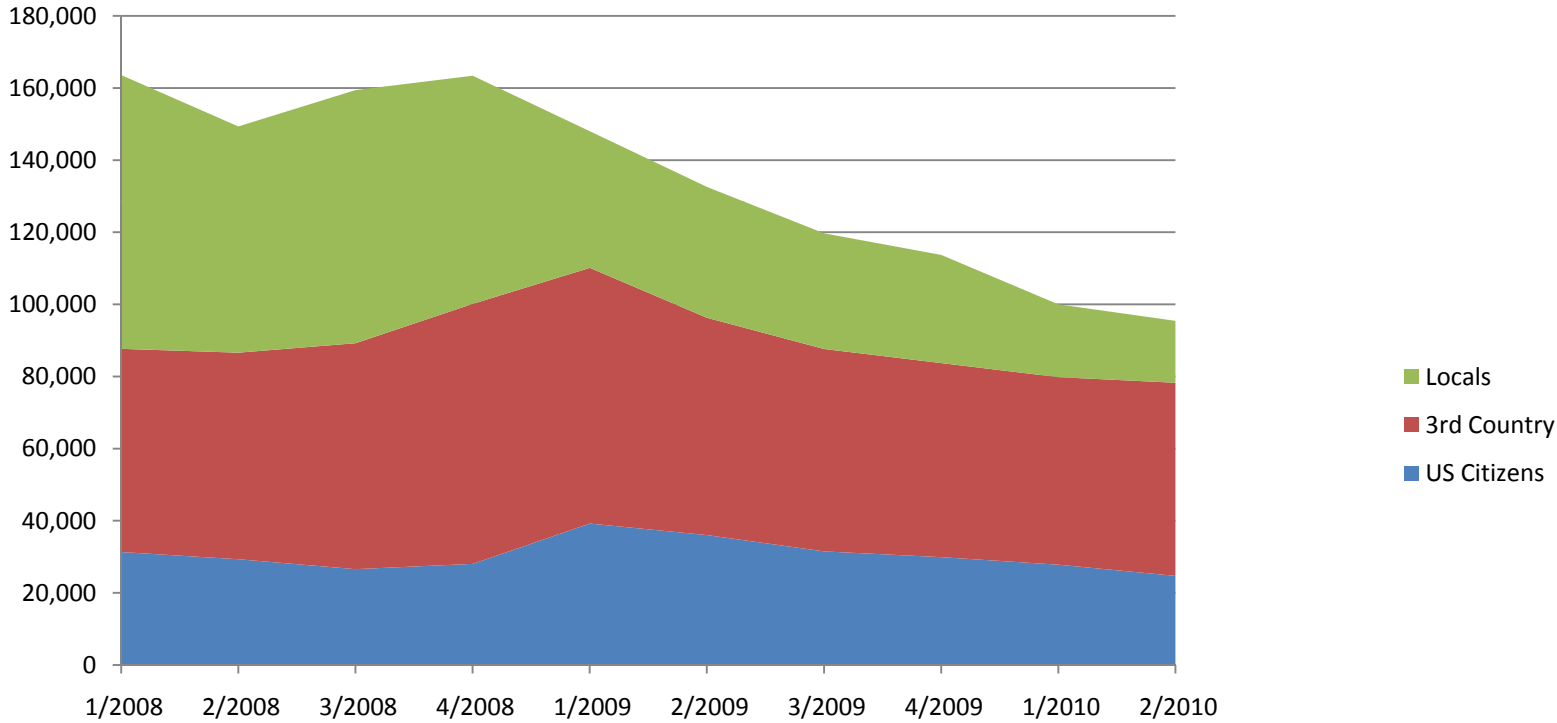
CENTCOM Contractors by Source



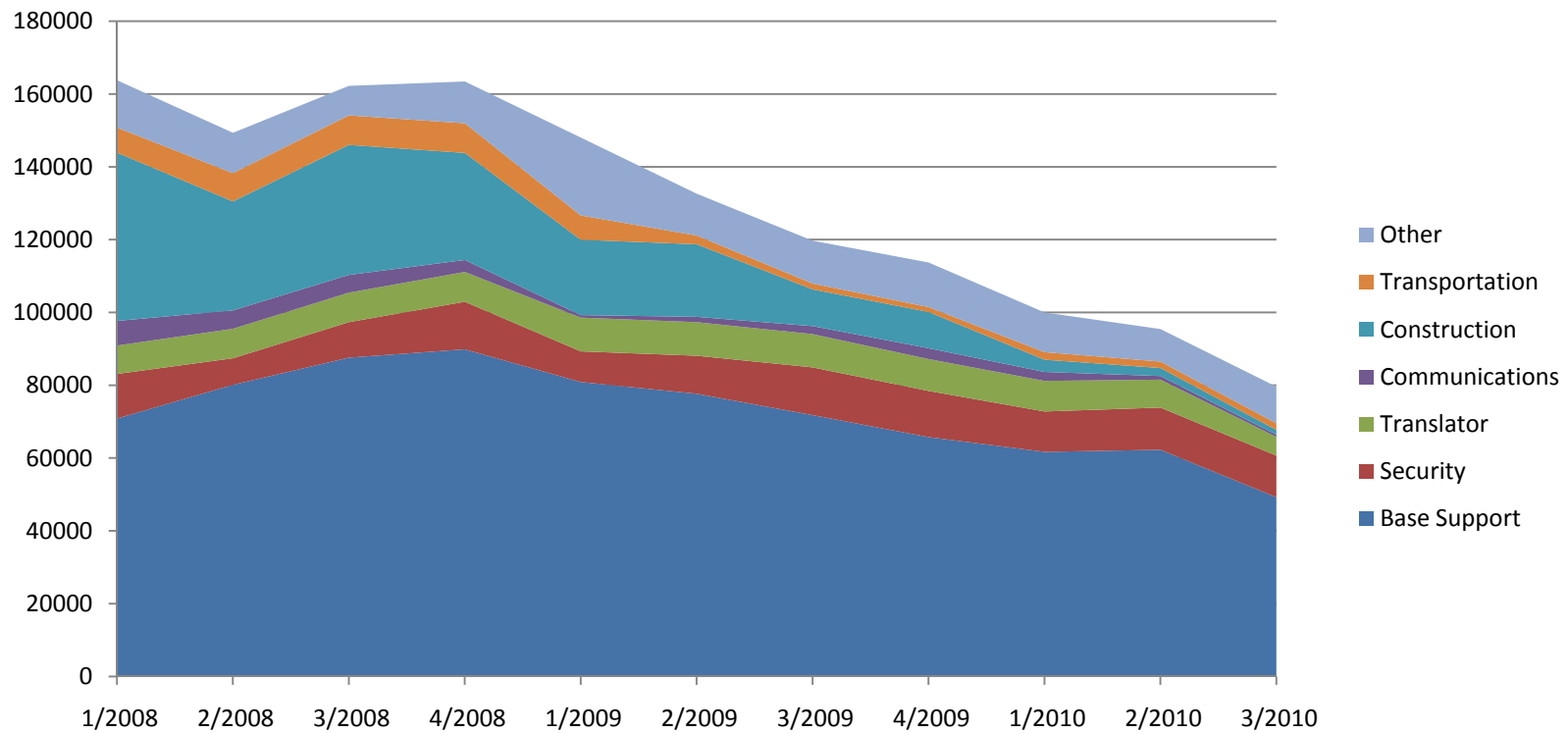
Contractors in Other CENTCOM 2008-2010



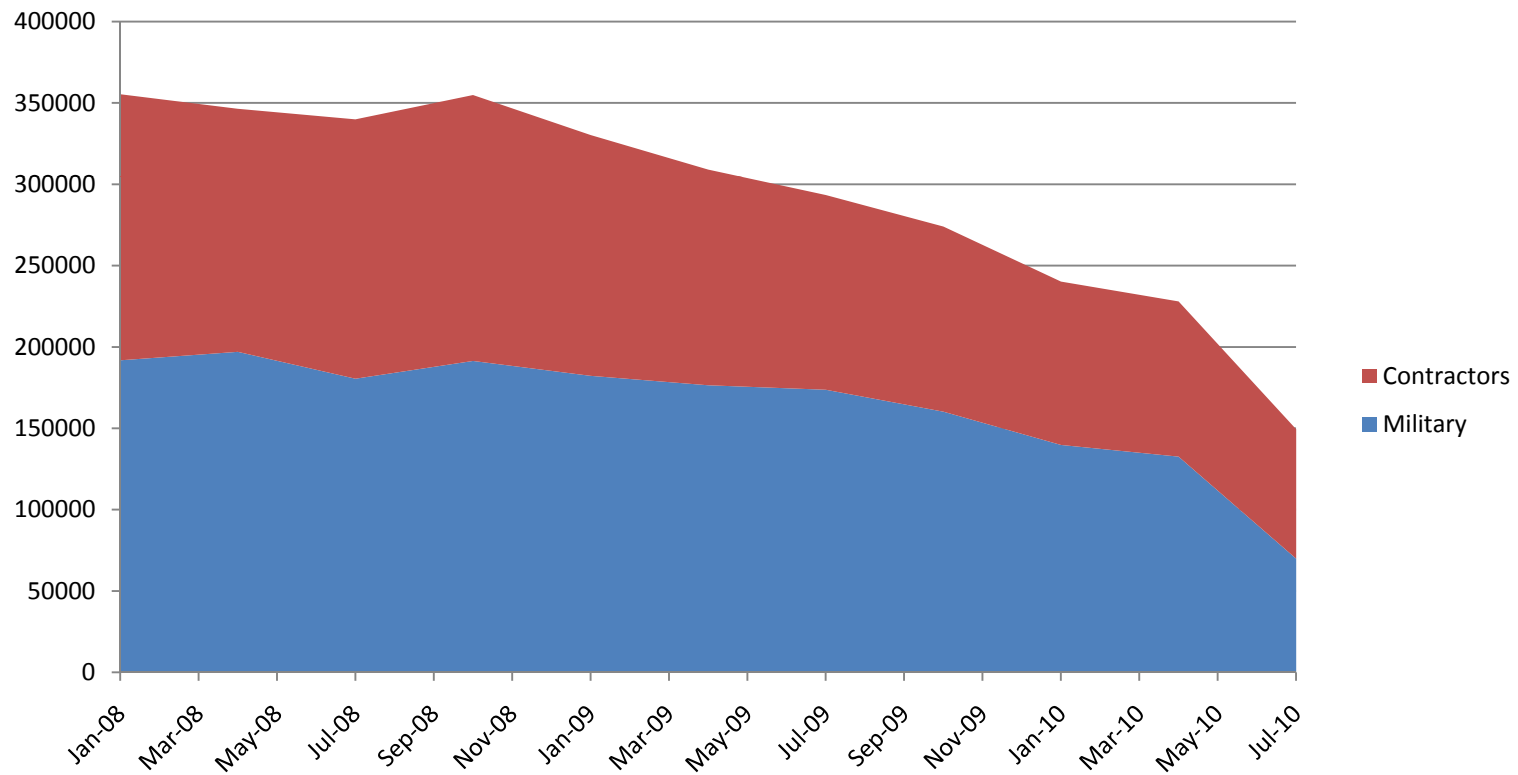
Contractors in Iraq 2008-2010



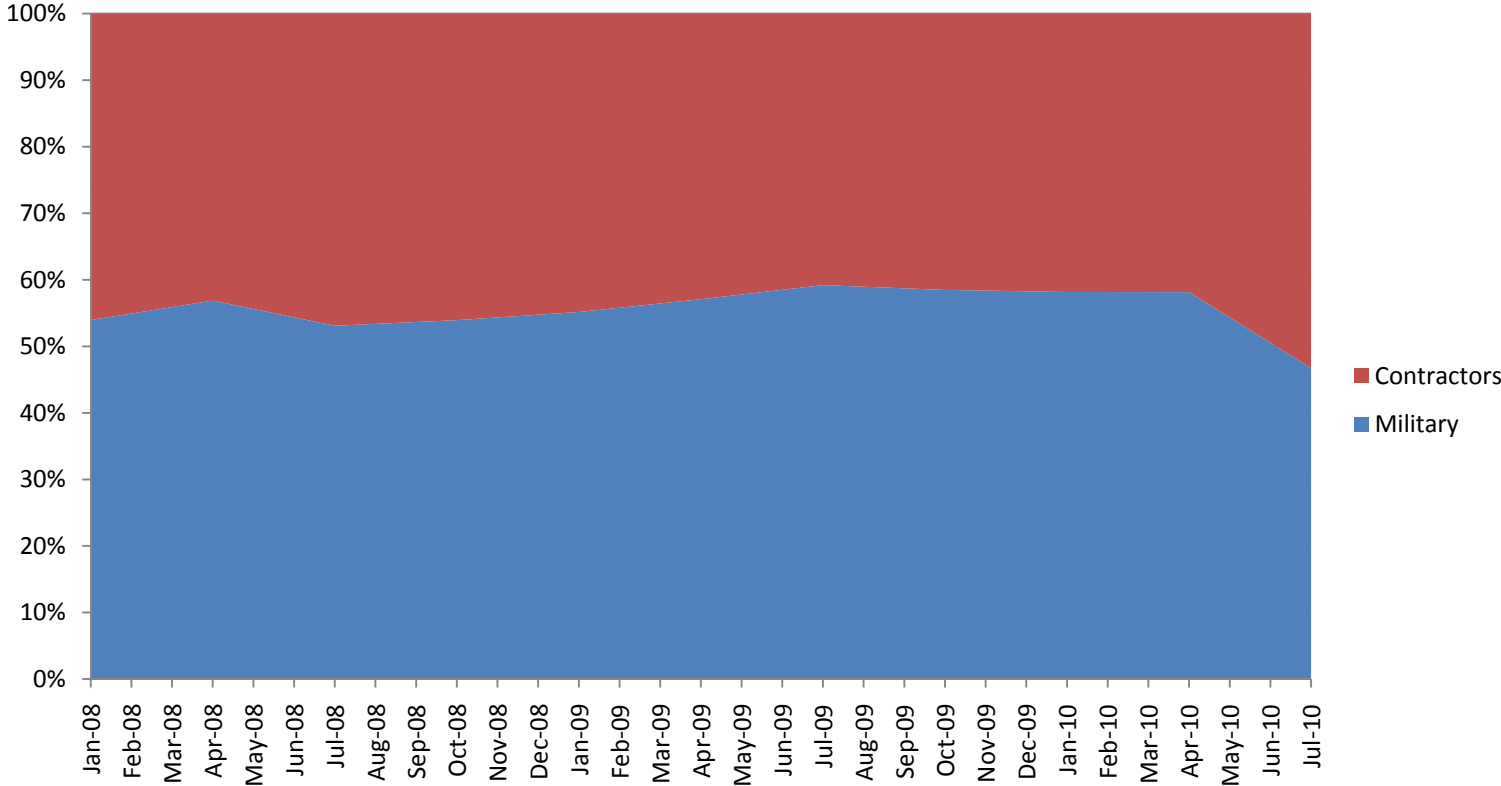
Iraq Contractors by Function



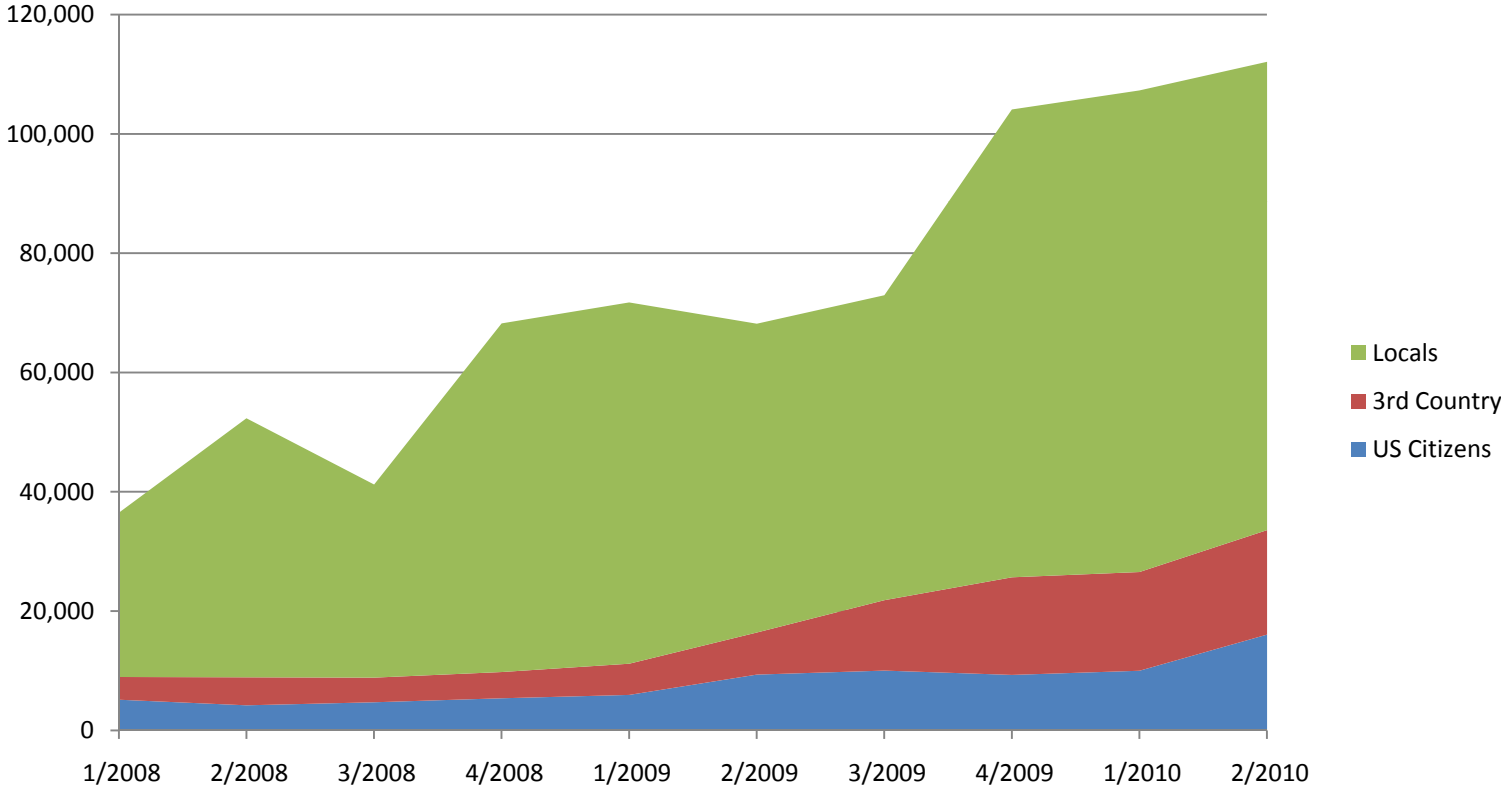
OIF - Total Strength in Theater



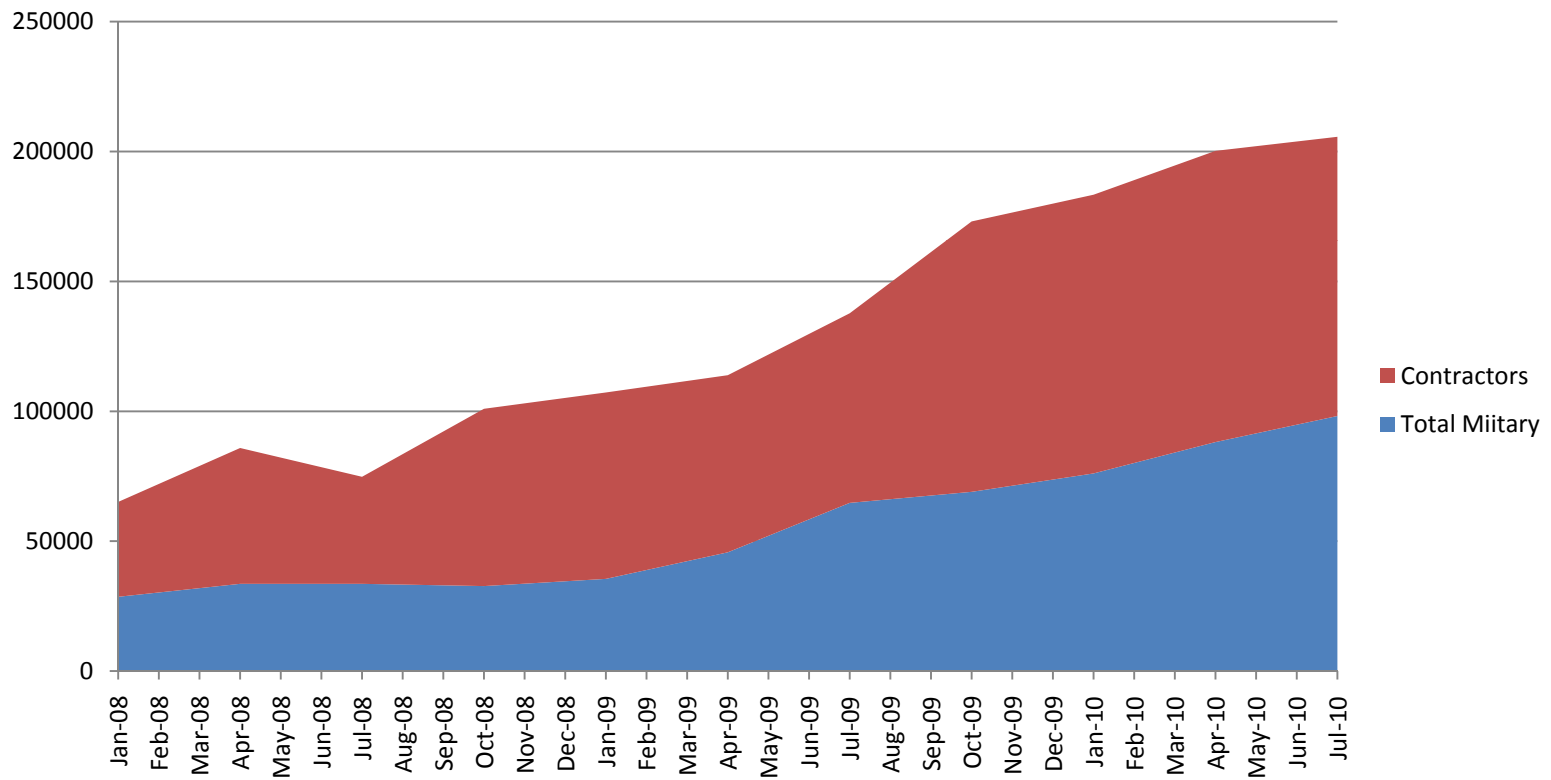
Proportion of Contractors in Iraq



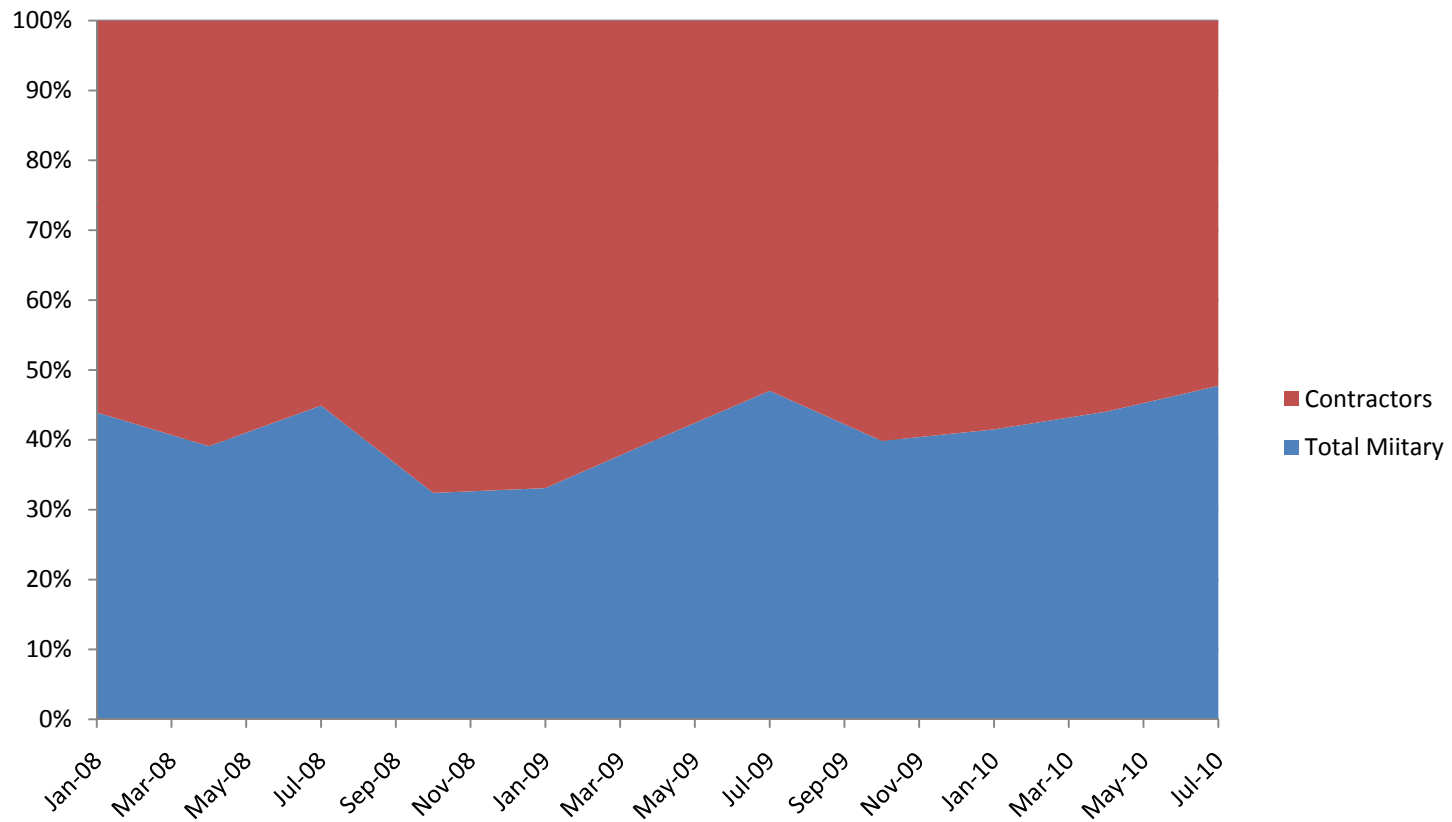
Contractors in Afghanistan 2008-2010



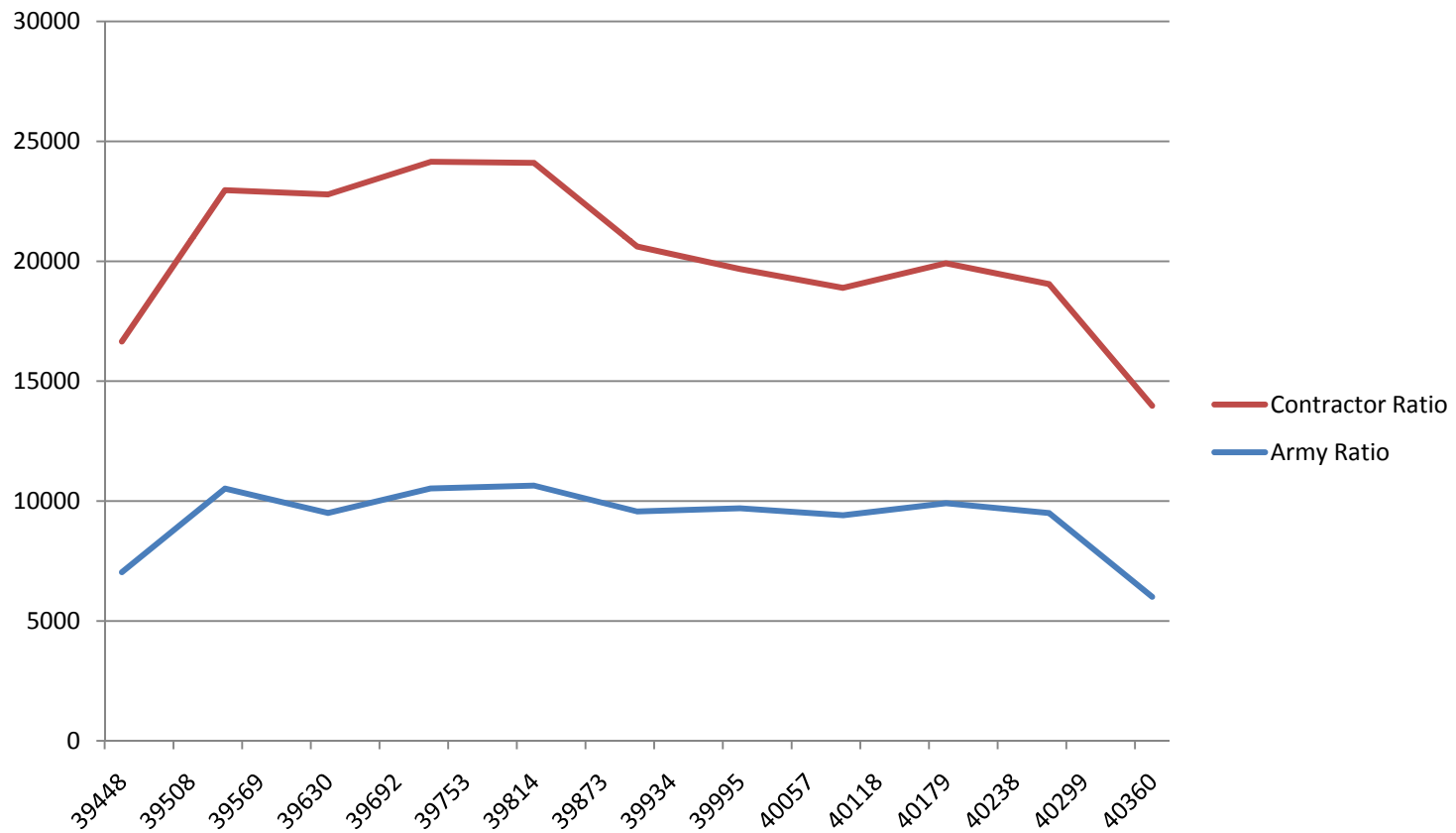
OEF – Total Strength in Theater



OEF – Mix of Personnel



OIF – Combined BFE



Interim Findings for OIF

Military Personnel	ARMY BFE	MARINE RFE*	ALLIED BRIGADE**
Combat Increment	3,600	5,600	4,000
Self-Support Increment	5,400	5,400	2,000
Army Support Increment		2,500	3,000
Total Military	9,000	13,500	9,000
Contractors***	11,000	16,500	11,000
Total Personnel	20,000	30,000	20,000

* For inland operations only

**Data for Allied Brigades are rough estimates

*** Assuming Demand for contractors is a direct function of the number of combat brigades or regiments

OIF – Initial Findings

- An Army BFE for OIF for 2006 to 2010
 - 9,000 military personnel and 11,000 contractors
 - No allowance for Army support to Air Force
- A Marine RFE for OIF for 2006 to 2010
 - 13,500 military personnel and 16,500 contractors.
 - Includes Army support increment of 2,500 military personnel.
- Extent to which number of contractors depends on the number of BCTs & RCTs is unclear.

OEF – Combined BFEs



Interim Findings for OEF

Military Personnel	ARMY BFE	MARINE RFE	ALLIED BDE
Combat Increment	3,600	5,600	4,000
Self Support Increment	4,000	5,400	2,000
Army Support Increment		400	1,500
Total Military Personnel	7,600	11,400	7,600
Contractors	14,000	21,000	14,000
Total Personnel	21,600	32,400	21,600

OEF – Interim Findings

- An Army BFE for OEF for 2006 – 2010
 - 7,600 military personnel
 - 14,000 contractors
- A Marine RFE for OEF for 2006 – 2010
 - 11,400 military personnel
 - Including 400 Army personnel
 - 21,000 contractors
- The current buildup suggests that number of contractors may be to some extent independent of number of BCTs
- The combined BFE and RFE for Afghanistan is 8% greater than the combined BFE and RFE for Iraq.

Summary Findings

About Analysis and Data:

- Data on current campaigns is hard to find
 - No central archive of data
 - Data require further refinement

Observations:

- Large numbers of contractors have been used to augment military support personnel
- Total personnel per BCT/RCT was 8% greater for Afghanistan than for Iraq.
- Should include DOD and non-DOD civilian employees
- Unit rotations may be inefficient and more costly because of the overlap of units
- The BFEs and RFEs derived in the study appear to be reasonable