

16<sup>th</sup> International  
Command and Control Research and Technology Symposium

“Collective C2 in Multinational Civil-Military Operations”

*June 21-23, 2010 – Quebec City, Canada*

**Using Large Group Displays to Support Intensive Team Activities in C2**

Paper 129

Track 5 - Collaboration, Shared Awareness, and Decision Making

**Denis Gouin\***

Leader, Innovative Interfaces and Interactions Group  
Defence R&D Canada – Valcartier  
2459 Pie-XI North, Quebec City, QC, G3J 1X5  
Canada

**Rudi Vernik**, Research Leader

**Steve Wark**, Senior Research Scientist

Defence Science & Technology Organization (DSTO)  
Edinburgh, PO Box 1500, Edinburgh SA 511  
Australia

(\*) : Point of contact information

E-mail: [Denis.Gouin@drdc-rddc.gc.ca](mailto:Denis.Gouin@drdc-rddc.gc.ca)

Phone: 1 (418) 844-4000 ext. 4339

Fax: 1 (418) 844-4538

## Report Documentation Page

Form Approved  
OMB No. 0704-0188

Public reporting burden for the collection of information is estimated to average 1 hour per response, including the time for reviewing instructions, searching existing data sources, gathering and maintaining the data needed, and completing and reviewing the collection of information. Send comments regarding this burden estimate or any other aspect of this collection of information, including suggestions for reducing this burden, to Washington Headquarters Services, Directorate for Information Operations and Reports, 1215 Jefferson Davis Highway, Suite 1204, Arlington VA 22202-4302. Respondents should be aware that notwithstanding any other provision of law, no person shall be subject to a penalty for failing to comply with a collection of information if it does not display a currently valid OMB control number.

1. REPORT DATE

**JUN 2011**

2. REPORT TYPE

3. DATES COVERED

**00-00-2011 to 00-00-2011**

4. TITLE AND SUBTITLE

**Using Large Group Displays to Support Intensive Team Activities in C2**

5a. CONTRACT NUMBER

5b. GRANT NUMBER

5c. PROGRAM ELEMENT NUMBER

6. AUTHOR(S)

5d. PROJECT NUMBER

5e. TASK NUMBER

5f. WORK UNIT NUMBER

7. PERFORMING ORGANIZATION NAME(S) AND ADDRESS(ES)

**Defence R&D Canada - Valcartier, Innovative Interfaces and Interactions Group, 2459 Pie-XI North, Quebec City, QC, G3J 1X5 Canada,**

8. PERFORMING ORGANIZATION REPORT NUMBER

9. SPONSORING/MONITORING AGENCY NAME(S) AND ADDRESS(ES)

10. SPONSOR/MONITOR'S ACRONYM(S)

11. SPONSOR/MONITOR'S REPORT NUMBER(S)

12. DISTRIBUTION/AVAILABILITY STATEMENT

**Approved for public release; distribution unlimited**

13. SUPPLEMENTARY NOTES

**Presented at the 16th International Command and Control Research and Technology Symposium (ICCRTS 2011), Quebec City, Quebec, Canada, June 21-23, 2011. U.S. Government or Federal Rights License.**

14. ABSTRACT

**The use of Large Group Displays (LGDs) is becoming widespread in Command and Control (C2) facilities to support teams involved in the conduct and planning of operations. They should, in theory, provide significant benefits to C2 teams, particularly in situations where they are engaged in intense collaborative tasks to support coordinated decision-making, collaborative planning and synchronized action. There are several documented examples of how LGDs have been deployed and used, both within defence and non-defence environments. Much of the focus has been on the use of LGDs for shared situation awareness, particularly in relation to providing a 'picture' of the external or target environment. However, there is significant scope for extending their usage to support new modes of awareness, interaction, and collaboration. This paper draws from an extensive base of knowledge generated and consolidated across the United States (US), United Kingdom (UK), Canada and Australia which was used to develop considerations and guidelines for the design, development and use of LGDs in C2. Analysis of this information identified three main inter-related challenge areas that need to be addressed by future R&D: Information Content, Content and Display Management, and Integration and Interaction. We also draw on this work to consider how LGDs might best be incorporated and used in future C2 facilities to support highly dynamic situations involving high levels of interaction between team members, rapidly changing and evolving information needs, and situations where teams may not be geographically co-located.**

15. SUBJECT TERMS

16. SECURITY CLASSIFICATION OF:			17. LIMITATION OF ABSTRACT <b>Same as Report (SAR)</b>	18. NUMBER OF PAGES <b>41</b>	19a. NAME OF RESPONSIBLE PERSON
a. REPORT <b>unclassified</b>	b. ABSTRACT <b>unclassified</b>	c. THIS PAGE <b>unclassified</b>			

Standard Form 298 (Rev. 8-98)  
Prescribed by ANSI Std Z39-18

# Using Large Group Displays to Support Intensive Team Activities in C2

**Denis Guoin**  
Defence R&D Canada –  
Valcartier  
Canada

**Rudi Vernik**  
Defence Science &  
Technology Organization  
Australia

**Steve Wark**  
Defence Science &  
Technology Organization  
Australia

## Abstract

The use of Large Group Displays (LGDs) is becoming widespread in Command and Control (C2) facilities to support teams involved in the conduct and planning of operations. They should, in theory, provide significant benefits to C2 teams, particularly in situations where they are engaged in intense collaborative tasks to support coordinated decision-making, collaborative planning and synchronized action. There are several documented examples of how LGDs have been deployed and used, both within defence and non-defence environments. Much of the focus has been on the use of LGDs for shared situation awareness, particularly in relation to providing a “picture” of the external or target environment. However, there is significant scope for extending their usage to support new modes of awareness, interaction, and collaboration. This paper draws from an extensive base of knowledge generated and consolidated across the United States (US), United Kingdom (UK), Canada and Australia which was used to develop considerations and guidelines for the design, development and use of LGDs in C2. Analysis of this information identified three main inter-related challenge areas that need to be addressed by future R&D: Information Content, Content and Display Management, and Integration and Interaction. We also draw on this work to consider how LGDs might best be incorporated and used in future C2 facilities to support highly dynamic situations involving high levels of interaction between team members, rapidly changing and evolving information needs, and situations where teams may not be geographically co-located.

## 1 Introduction

As operational situations become more complex, dynamic, and time critical, C2 teams need additional support to achieve their goals. For example, new approaches are needed to aid collaborative activities through the provision of enhanced awareness, improved methods of communication (particularly for geographically distributed teams), and new interactive methods to support teamwork. The introduction of LGDs into command facilities provides a very visible ‘contribution’ for addressing many of the challenges being faced by C2 teams. But are LGDs proving effective or are they just another technology that provides a ‘wow’ factor and an impression of progress? How might they be most appropriately integrated into the workings of modern C2?

One of the main reasons for using LGDs in C2 has been to provide shared situation awareness of the external threat environment. This type of awareness is often provided as a map with overlays showing the placement of adversaries in relation to one’s own forces - generally referred to as the Common Operating Picture (COP). LGDs provide a large display

area and so can be used to display a range of additional and related information. Figure 1 shows an example of how LGDs are being used in modern C2 centres, in this case at the Prince Sultan Air Base Air Operating Center. In this example, multiple LGDs are being used to provide a range of information about the operational setting including the operating picture, video feeds from airborne assets and the provision of weather conditions in the area of interest.



**Figure 1: An example of the use of Large Group Displays for C2**

But, how do we go about ensuring that LGD capabilities are developed to most effectively support C2 teams? There is a considerable amount of material available to those responsible for the design and development of LGD capabilities. For example, this paper draws from an extensive base of knowledge and experience consolidated and generated by The Technical Cooperation Program (TTCP, 2010) to provide guidelines for the design, deployment and use of LGDs in command environments. The Technical Panel on Command Information Interfaces (TP2) of the Command, Control, Communications and Information (C3I) Group has undertaken a range of activities in this area, including a Knowledge Integration Task (KnowIT) (Vernik et al., 2006) and a workshop session involving defence scientists from the US, Canada, UK and Australia (Bowman et al., 2006). This work brought together and analysed collective knowledge about currently available large screen technologies, future display technologies, defence use of LGDs for C2, and information on related non-defence implementations. Importantly, the work undertaken by TP2 resulted in the capture, consolidation and generation of a host of guidelines and lessons learned based on experiences and evaluations of actual C2 systems. These activities culminated into the development of a comprehensive reference document to be used by national Defence staff and contractors involved in acquiring, developing, using, and evaluating LGD capabilities (Gouin, Wark & Vernik, 2010). There is also a substantial body of information in texts such

as the “Handbook of Control Room Design” (Ivergard & Hunt, 2009) and various defence and commercial standards - MIL-STD-1472F (DoD, 1999a), MIL-STD-2525B (DoD, 1999b), AS 3590.1-1990 (AS, 1990) - which deal with a range of important issues, particularly in relation to human perceptual attributes and their impact on the readability and use of large displays.

In the development of the TTCP materials it became evident that there was a broader range of issues that need to be addressed in relation to the use of LGDs for collaborative working, where shared situation awareness of the type described above is but one aspect. This paper focuses on this broader context which includes the use of LGDs in C2 environments that comprise multiple integrated LGDs for dynamic situations requiring the information displayed to be adapted to team needs, and for situations that involve geographically distributed teams. We consider these in line with the evolving nature of C2, where teams are required to increasingly cope with highly dynamic, time-critical, and uncertain situations.

We begin our discussion by defining a contextual basis for the paper by providing background information on collaborative working and teams in C2, with a particular focus on intense collaborative activities. We then provide a set of examples of facilities where LGDs have been used in practice and highlight some of the challenges that have been recorded. The remaining sections then focus on four key areas that we believe need to be considered when introducing LGDs to support a broad spectrum of intense collaborative activities in C2. These are: Information Content (What needs to be displayed when, and how?); Content and Display Management (How should the displays be dynamically arranged and managed?); and Integration (How should LGDs be integrated into C2 facilities) and Interaction (What modes of interaction should they support?).

## **2 Context and Background**

A significant amount of research has been undertaken to provide a theoretic basis for teamwork including the science of teams in C2, team cognition, and macrocognition (Rosen et al., 2008; Letsky et al., 2008). This work can help ground some of our thinking in terms of how we might best use LGDs to support the collaborative working of C2 teams. For example, the notion of “team” is explicitly defined as “a distinguishable set of two or more people who interact dynamically, interdependently, and adaptively toward a common and valued goal/objective/mission, who have each been assigned specific roles or functions to perform, and who have a limited life-span membership” (Salas et al., 1992). There is a spectrum of collaborative activities that C2 teams must perform to achieve common goals. Some of the work involves low-intensity activities where procedural processes can be enacted and where team members can work largely independently. However, C2 contexts are becoming more complex due to the more dynamic, and time-critical nature of military operations. In response, C2 teams are faced with situations where they must quickly assimilate information, coordinate and synchronise their activities within their own team and with other stakeholders, and react within ever shorter time frames. These types of intense team collaborations are the focus of this report.

Kumar, van Fenema, and Von Glinow (2005) describe intense collaboration in terms of: “the level and frequency of interactions needed for initiating and sustaining joint action and mutual awareness of the members of the team, the flux of activities in teamwork; the evolving work-object, and the context of the collaboration situation.” They propose a model with four dimensions to help characterize intense collaborative activities. These dimensions refer to the temporal arrangements of work, the ease of sharing work, the tightness of work coupling, and the uncertainty of work. Bowman, et al. (2009) draw on and extend from the work of Kumar et al. to define a contextual basis for Intense Collaboration in Command and Control. They extend the contextual model of Kumar et al. to include considerations defined by Alberts and Hayes (2006) in their work on C2 in the 21<sup>st</sup> century which highlights three factors that define the essence of transformed C2: “allocation of decision rights, patterns of interaction among the actors, and distribution of information”. Access to and use of information is an important dimension of intense collaboration and one that has been of prime concern for the use of LGDs in C2 environments: the need to support Shared Situation Awareness.

### ***2.1 Shared Situation Awareness***

The underlying goals for C2 teams typically involve undertaking operations within a particular geographic area; the common goal being to defeat an adversary. As such, shared awareness of the external or threat environment becomes an important enabler.

There are many potential benefits of using LGDs for Shared Situation Awareness. For example, a report by McLeod (1997) suggests that LGDs may support team working when “operators require concurrent use of information, they have shared tasks and where there are non-conflicting task needs.” The report also suggests that LGDs may be important where there are common information needs, feedback is required to be given to the whole team, tasks require a common frame of reference, and high-level summary or overview of information needs to be provided. LGDs can also provide an "orientating" type of capability by providing a way of getting a quick update and appreciation of the overall situation, either for one operation or across a range of operations.

There are many examples of how LGDs have been used to provide shared situation awareness and there are a range of considerations and guidelines that can aid in the design and development of these types of capabilities (Gouin et al., 2009). These cover important areas such as the readability of displays, information content, and display management. Ensuing sections of this paper will discuss many of these areas within the context of actual examples.

### ***2.2 Broader Usage Contexts***

Much of the work to date has focused on the use of LGDs to provide shared situational awareness for co-located teams based on largely static display layouts and limited interaction capabilities. This section establishes the context for an expanded discussion on the use of LGDs in C2, both in collocated and distributed environments.

The results of the Integrated Command Environment (ICE) study at the Naval Surface Warfare Center (NSWC), Dalgren (Dugger & Barley, 2000) provide some insights into these broader requirements. For example, although the more traditional notion of support for shared situation awareness featured prominently, some of the requirements focused more on the internal working of the team. The work showed that, in addition to using LGDs as an information display, LGDs could also be used as a common “walk-up” workspace to support briefings and “group work”. Moreover, the work proposed a broader notion of shared situation awareness. For example, in addition to providing information on the external situation, they highlighted a need to provide awareness of the workings of the team and the systems that they are using; commonly called internal situation awareness.

Modern C2 facilities are being developed to include a host of technologies to support collaborative working such as electronic chat, video teleconferencing, groupware applications, electronic whiteboards, and LGDs. Rather than providing a set of individual technologies that work independently, consideration needs to be given to providing an integrated capability to more effectively support C2 teams. For example, in situations where the team is distributed, it may be important to display video teleconference sessions on the LGDs so that the entire team can be briefed at once and to support ensuing discussions. In these situations, internal situation awareness for the team becomes an important consideration to ensure that the entire team has received the required information and that there is consensus as to the goals and courses of action. In line with this, the FORCENet project, sponsored by the Office of Naval Research, has allowed the exploration of architectural frameworks for naval warfare in the information age, integrating warriors, sensors, command and control, platforms, and weapons into a networked, distributed combat force (Entin et al., 2005). Collaboration technologies are a key enabler of this framework.

In this paper we provide examples and challenges for developing these types of integrated capabilities. Considerations for use of LGDs in supporting both colocated and geographically distributed teams are also addressed.

### **3 Examples and Challenges**

Although LGDs have proliferated in many areas, including defence and non-defence, these technologies are often not exploited to their full potential. LGDs are often simply used to conduct presentations, show multiple news channels or display a static view of the operational environment. Why might this be? In many cases, insufficient time is devoted to the broader design considerations. The important questions such as ‘Who are the LGDs intended for?’, ‘What information should be displayed?’ and ‘How is the information shown controlled?’ are not addressed. Another problem is that technology is often too complex to be used by most users and so only rudimentary features are used.

There are many examples of where LGDs have been used in C2 facilities but few deployed systems that have been evaluated. In this section we have chosen four systems which have

undergone significant evaluation to provide examples and hence support the discussion in this paper. They show a spectrum of capabilities covering a range of challenges facing C2 teams with increasing levels of support for intense collaborative activities, ranging from the provision of shared awareness of the external situation through to highly integrated multi-LGD environments. The intent of this section is to introduce the systems to the reader, together with a set of broad challenges that the systems were designed to address. This material then provides a point of reference for the more specific discussions provided in later sections of this paper covering some of the key areas that we believe need to be addressed in the design, development, and use of future C2 environments that make use of large displays.

### 3.1 K-Wall

The U.S. Navy’s Space and Naval Warfare (SPAWAR) Systems Center has developed Knowledge Wall (K-Wall) concepts to support shared situational awareness and decision-making in Joint Operation Centers. The purpose of the K-Wall was to foster shared situation awareness, permit continuous updating of the military situation and enhance the senior staff’s ability to interact with supporting information systems. Specifically, it was to help Battle Watch Captains maintain situation awareness through the use of various information products produced daily and to maintain their understanding of the “Big Picture”. K-Wall was to help senior-level decision makers answer cognitively challenging questions such as: “How are we doing?” (with respect to all aspects of the overall mission and current plan); “What is our status?” (with regard to force-wide resource management, multi-domain implementation and various timeline issues); “What has changed since I was last updated?”; “Are there coherent patterns in the data that I’m missing?”; and, “Am I remembering what led up to this situation correctly?” (Smallman et al., 2001).



Figure 2: K-Wall

The K-Wall used a wall-sized shared display to fuse all information relevant to mission status and to replace the traditional situation maps that were ubiquitous in operations centers.

It provides a good example of how support for Shared Situation Awareness can be provided on a LGD. Some of the features and contributions that this system makes include:

- **Information Integration.** Bringing multiple sources of information together on a large shared display.
- **Summary Information.** The use of novel graphical and drill-down approaches for providing mission and anchor desk summaries.
- **Reducing the briefing cycle.** Eradicating the need for a traditional 8-hour briefing cycle by using a continuous situation awareness and assessment approach.
- **Information Quality.** Providing indicators of information age.

The K-Wall was deployed on the United States Ship (USS) Coronado and at the Naval War College for the Global 2000 War Game and evaluated against 14 key user requirements (Oonk et al., 2001). A range of issues and considerations were recorded including limitations in being able to support interactions with, and visibility of, information. Some broader team-based collaboration issues were also identified such as the need to provide tools and business processes to support improved multi-tiered collaboration. These will be discussed in more detail within the appropriate sections of this paper and in relation to approaches used by other example systems.

The results from the Global 2000 War Game helped in the development of a modified design for the K-Wall which was used and evaluated in the Global 2001 War Game (Oonk et al, 2002). The new design used 3 large display panels. In addition, smaller “K-Desks” were provided to the various Component Commanders for use in information production and monitoring. The layout of the workspace was redesigned to provide users with better viewing of the large displays. There were mixed results in that many of the complexities inherent in providing integrated workplaces now came into play such as the management and interaction with multiple displays, attention direction, and the workplace layout.

### ***3.2 Interactive DataWall***

A similar approach to the SPAWAR K-Wall - called the “DataWall” - was evaluated during the United States Air Force (USAF) Joint Expeditionary Forces Experiment (JEFX) 2004 exercises at Nellis Air Operations Center (Darling & Means, 2005). This work echoes many of the considerations and challenges of using LGDs to support shared situational awareness as were reported in the K-Wall deployments and evaluations including the need to understand information requirements, the ability to support content and display management, and the need to provide integration of information. The requirement to be able to interact with the information on the displays was also highlighted. In terms of broader contexts for collaborative working, the evaluations highlighted the need to support distributed collaboration, the need for flexible systems that can be adapted to team needs and the importance of providing internal awareness of team activities and processes.

The Interactive DataWall developed by the USAF Rome Laboratories provides an example of how interaction capabilities can be provided for LGDs. The system allows multi-modal

interaction through speaker-independent voice activation and a wireless pointing device using camera tracked laser pointers. The system provides both conventional computer mouse functionality and electronic grease pencil capability to interact with a high-resolution display. Three horizontally tiled video projectors allow a combined resolution of 3840 x 1024 pixels across a 12' x 3' screen area. Examples of data display elements include detailed terrain, land route maps, real-time audio/video communications, airborne surveillance and intelligence information, archived geographic database information, and modeling and simulation capability for sortie generation exercises (Jedrysik et al, 1999).



**Figure 3: The Interactive DataWall**

As shown in Figure 3, interaction and collaboration often go hand in hand. In this case, local collaboration is being supported. Distributed collaboration through LGDs is often more problematic. In these situations, many of the mechanisms that people use to communicate and collaborate, such as gestures, are not supported.

### **3.3 LiveSpaces**

This next example shows an approach for addressing some of the challenges of integrating LGDs into team workplaces and the challenges of supporting the interactions between people, the technologies and information they use, and their environments. The LiveSpaces approach also looks at the challenges of distributed collaboration.

The LiveSpaces approach (Vernik et al., 2003; Vernik et al., 2004) supports the development of highly integrated collaboration environments. The LiveSpace Operating Environment and related applications (Phillips, 2008) provides a means of controlling and coordinating all aspects of the work environment to help people work together. LiveSpaces allows the seamless integration of various technologies, including LGDs, into a supporting system that becomes a part of the background environment rather than the more common situation where these technologies appear as a set of disparate, idiosyncratic, and quirky hardware gadgets and software applications, each with their own modes of operation and interfaces.

Figure 4 shows a LiveSpaces environment in use at the Australian Defence Force Warfare Centre. In this case, in addition to having access to their own personal displays, the users have access to a range of shared displays including LGDs and a number of smaller displays used to provide ambient information and for activities such as video teleconferencing. The underlying LiveSpaces infrastructure supports various ways of managing, controlling, and interacting with the shared displays. For example, the LiveSpaces automation system can allow autonomous control of the displays to rapidly configure the displays with required information for the task at hand. A LiveSpaces application called Ignite can be used to reconfigure displays, either from a touch screen located near the front door or from individuals' workstations. Individuals can interact with the shared displays by simply moving the mouse cursor from their own screen onto the shared screens. Users can also easily share the information on their own screens with others. The LiveSpaces infrastructure supports the federation of sets of LiveSpace environments to provide support for distributed collaborative work.



**Figure 4: One of the 10 federated LiveSpaces in use at the Australian Defence Force Warfare Centre**

The LiveSpaces baseline has been deployed to several Defence sites around Australia, three installations have been established by Defence Research & Development (R&D) Canada, and setups have been taken in the US to support work being undertaken by the USAF in the design of future Air Operations Centres. In addition to studies being undertaken on a national basis, the TTCP C3I TP2 panel has been using LiveSpaces to support such studies across member nations. LiveSpaces has also been used to support an Australian national

research project called HxI Braccetto (Vernik et al., 2006) which focused on new rapidly composable and deployable collaboration systems. A significant amount of exploration and evaluation has been undertaken in areas such as workspace awareness (Gutwin & Greenburg, 2002). A key issue relates to the layout of team workspaces. LiveSpaces does not presuppose the layout or configuration of a team environment. The various team environments developed using the LiveSpaces approach and technologies have been arranged in a variety of ways with different numbers of LGDs. But, what is the optimum number of LGDs for particular team situations and where should they be positioned?

### 3.4 ICE Lab

NSWC Dahlgren Division developed an Integrated Command Environment (ICE) Laboratory to explore the possibilities for an innovative naval command center where control of a ship's systems (e.g., weapons, navigation, and damage control) could be centrally maintained and communication between the operators controlling these systems could be optimized (Dugger & Barley, 2000). Of particular interest for this paper were the results that provide insights into the use of multiple LGDs within a C2 facility.

As shown in Figure 5, eight watch stations were surrounded by ten large screen displays. Each operator had a multimodal watch station console with three upright monitors and one desktop embedded monitor. The setup differs from "traditional" control rooms, where operators generally face one direction and all view the same LGD(s). The rectangular layout was selected to facilitate face-to-face interaction and minimize shipboard fatigue by aligning operators with one of the ship's principal axes.

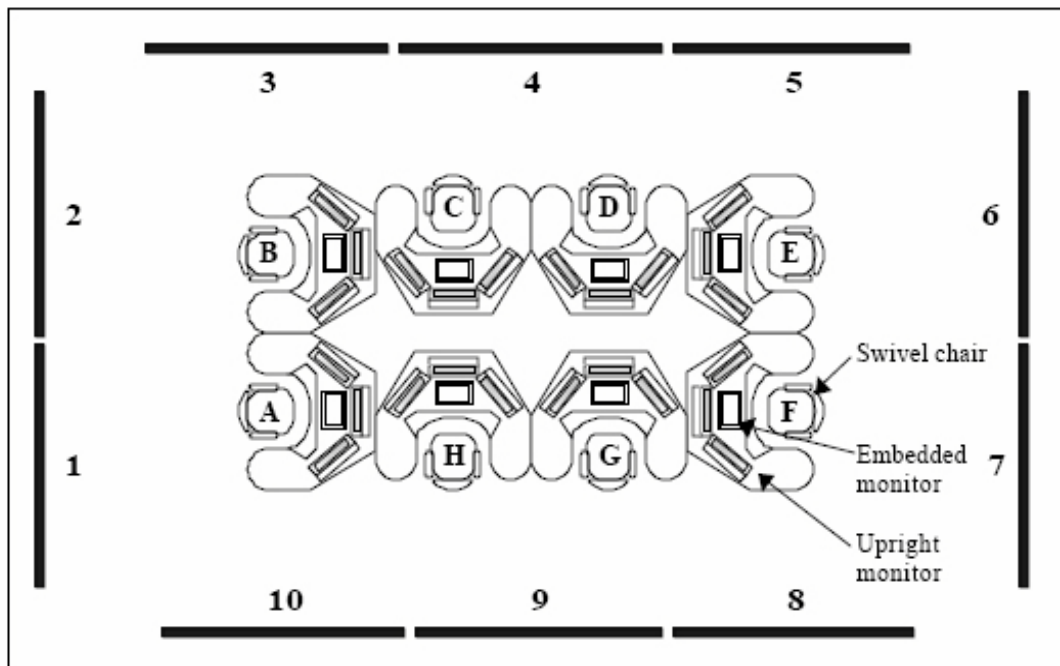


Figure 5: The configuration of the ICE lab. Eight operators surrounded by ten LGDs ( Dugger & Barley, 2000)

The ICE Lab was used to measure the impact of viewing distances, viewing angles and text size on the readability. In particular, this work provides important data to support workplace layout design and display management strategies. For example, determining the required head rotation and viewing angle of the operators when they are using the LGDs, permits analysis of the useful operator/LGD combinations and provides insights into which screens, if any, should display redundant information. Research of this type is particularly important to help in the layout and design of future C2 collaborative workplaces.

#### **4 Information Content**

We now turn our attention to the three key areas that we believe need further attention when considering broader contexts of using LGDs to support intense collaborative activities within future C2 facilities. This section covers the first and most fundamental of these: information content. A range of questions need to be answered such as: what should be displayed, why is it needed and when should it be provided? There are also questions related to how the information should be provided. This includes the use of video, sound and speech, graphical representations, text, and combinations of these. The usability of content is of particular importance, such as the size, format and legibility of text and graphics. We will not discuss this aspect in any detail in this paper and refer readers to Gouin, Wark & Vernik (2009) for a comprehensive set of guidelines.

As discussed previously, there is a need to provide information on the external or operational situation. This area has been the focus of significant amounts of research and much has been written about this type of Shared Situation Awareness (Endsley, 1995). However, an important aspect that needs to be considered relates to highly dynamic situations, where teams involved in intense collaborative activities require awareness of the internal workings of the team, and the systems and information that they use. For example, the DataWall evaluations (Darling & Means, 2005) highlighted the need to use the displays to: “provide activity awareness to show the current state of tasks, check lists, and/or operations.” In relation to systems status, the LiveSpaces main interface application, called Ignite, was designed to provide up-to-date feedback on the availability of particular facilities and applications, and faults that might impact on the team activities (Bright & Vernik, 2004). Information about the content itself also needs to be provided, such as the age of the information and its reliability. Few of the systems surveyed provide this type of information.

LGDs can show so much information that it may be difficult to determine which subsets of that information are directly relevant to the current task. Also, some of the information on LGDs may be static by their nature, such as mission summaries. Often large amounts of disparate data is drawn together from different sources and displayed on an LGD. Display simplification techniques such as providing summary information, highlighting, grouping and attention management becomes critical if the information is to be used effectively. The summary displays shown on the K-Wall (Figure 2) provide a good example of how these types of issues might be addressed. In this case, in addition to the more traditional COP displays, summary information is provided on important aspects in areas such as weather. Importantly, a system of graphical indicators is used to highlight the criticality of the

information and provides information on the situation now and as anticipated tomorrow, or in the longer term.

## **5 Content and Display Management**

The arrangement and management of content on displays is also an important consideration if required information is to be made available to teams at the right place and time. This becomes problematic in situations where multiple large display surfaces are used to support teams engaged in highly dynamic situations.

Experimentation undertaken as part of the LiveSpace's Augmented Synchronized Planning Spaces (AuSPlanS) project (Evdokiou et al., 2004) showed that team members can innovate and adapt work practices to provide highly effective approaches for content and display management when environments provide mechanisms to allow for rapid access to required information and highly integrated socio-technical capabilities such as are provided in ubiquitous workspaces (Vernik, 2010). However, this relies heavily on the particular skills and abilities of the team members and team dynamics.

Dugger and Barley (2000) provide several useful insights into the use of automated content control in relation to their ICE lab investigations. They suggest that consideration needs to be given to the "advantages and disadvantages of both manual and automatic control, along with possible hybrids." They highlight a number of possible disadvantages of manual control including increased operator workload/stress, degradation of primary task performance, and operator annoyance experienced when completing the repetitive task. Automated control may prove beneficial but there can be a number of down sides including "reliability problems such as might be experienced when the system alters the display to show information that is deemed less important."

The management and control of content displayed on a LGD was investigated as part of the SIDEView system developed at MITRE (Mulgund et al., 2003). This system was used to study how content might be best provided and managed on LGDs to achieve shared situation awareness. In this system, users did not directly control and manage the information on the display. Rather, all interaction was through a display management process using a publish/subscribe mechanism. This allowed information from multiple different users to be fused into a common view on the large screen or for particular information to be displayed in a separate view and tiled on the display. The approach allowed for direct and mediated interaction by the users. In a mediated mode, an information manager can activate "view filters" which control who can place information on the displays and can decide on how the views will be arranged.

Content and display management is a critical aspect in the development of LGD capabilities to support the activities of C2 teams. Some work has been done in this area but more work is needed on areas such as attention direction (Oonk et al, 2002) understanding the tradeoffs between manual and automated control, and considerations for aspects such as redundancy of information on displays based on the layout of team workplaces.

## **6 Integration and Interaction**

We now turn to the broader aspects of how LGDs might be integrated into C2 facilities and the modes of interaction that they should support. Interaction covers a variety of areas. For example, in conducting intense collaborative tasks, people need to interact with the information on the LGDs to, for example, drill down on information to get more detail. They also need to interact with the LGD capability to arrange views on the screen, change volume and screen settings, and move information between screens in situations where multiple LGDs are in use. They also use LGDs to interact at a human level through the use of approaches such as video teleconferencing and when using the displays as an electronic “whiteboard”. However, LGDs are but one capability within modern C2 facilities. Individuals often have access to their own displays and information and they use a range of electronic collaboration tools such as chat and groupware applications. The cognitive overheads of having to understand a range of interaction methods and protocols can have a significant impact on the effectiveness of teams.

Several approaches have been developed and deployed for providing multiple LGDs into a fully integrated C2 environment. For example, the second iteration of the K-Wall R&D looked at how 3 LGDs could be used in conjunction with K-desks that provided users with their own displays and information (Oonk et al, 2002). The ICE lab investigations looked at layouts which incorporated 10 LGDs. The LiveSpaces approach uses ubiquitous computing approaches (Weiser, 1991) to provide highly integrated workplaces and to address many of the socio-technical challenges facing C2 teams. Each of these initiatives has highlighted a range of challenges that will need to be addressed in the future. For example, Darling and Mears (2005) report on the need to support distributed collaboration. They argue that there is a need to provide tools and business processes to support improved multi-tiered collaboration, including feedback and guidance for information providers. Dugger and Barley (2000) show the impact of layout in terms of team interactions and the need to consider aspects such as the redundancy of information on displays.

## **7 Conclusion**

In this paper, we have discussed a range of issues that need to be addressed in relation to the use of LGDs for collaborative working, particularly for C2 teams engaged in intense collaborative activities. In particular, we focused on situations which employ multiple integrated LGDs for dynamic situations requiring the information displayed to be adapted to team needs, and for situations that involve geographically distributed teams.

We defined a contextual basis for the paper by providing background on collaborative working and teams in C2, with a particular focus on intense collaborative activities. We drew from a set of examples, considerations and guidelines for the design and development and use of LGDs in C2. This material resulted from TTCP collaborative activities undertaken across the USA, UK, Canada and Australia. Analysis of this information identified three main inter-related challenge areas that need to be addressed by future R&D: Information Content, Content and Display Management, and Integration and Interaction. We discussed these in relation to four main example deployments of LGDs and the socio-

technical and the emerging operational challenges that will be faced by C2 teams in the future.

## 8 Acknowledgements

This paper was developed under the auspices of The Technical Cooperation Program (TTCP), Command, Control, Communications and Information (C3I) Systems Group, Command Information Interfaces (CII) Technical Panel 2 (TP2). We would like to thank C3I TP2 members Mr. Don Monk (US-AFRL), Mr. Peter Houghton (UK), Dr. Elizabeth Bowman (US-ARL) and Mr. Peter Evdokiou (AUS) for their contributions.

## References

AS 3590.1-1990. *Screen-based workstations Part 1: Visual display units*, Australian Standard, <http://www.standards.com.au>, visited 12 Feb 2011.

Alberts, D.S. and R.E. Hayes, (2006). *Understanding command and control*, CCRP Publications, Washington, DC, 2006.

Bowman, E. (US) (Editor), J. Hollands (CA), P. Farrell (CA), J. Gualteri (US) and D. Gouin (CA) (2006). *Knowledge Management and command information interfaces in net-centric operations*. TR-C3I-TP2-3-2006, November 2006.

Bowman, E., D. Gouin, T. Pattison, J. Johnson and P. Williams (2009). *Military aspects of intense collaboration*. Workshop Report, The Technical Cooperation Program, TR-C3I-6-2009. Dec 2009.

Bright, D. and R.J. Vernik (2004). *LiveSpaces: An interactive ubiquitous workspace architecture for the Enterprise*. EUC 2004: 982-993, 2004.

Darling, E. and C.D. Means (2004). *A methodology for unobtrusively determining the usage of C2 Data Walls*. 10th International Command and Control Research and Technology Symposium (10 ICCRTS), 2004.

DoD (1999a). *MIL-STD-1472F: Department of Defense Design Criteria Standard, Human Engineering*. US DoD 1999, <http://mil-standards.com>, visited 12 Feb 2011.

DoD (1999b). *MIL-STD-2525B: Department of Defense Interface Standard, Common Warfighting Symbolology*. US DoD 1999, <http://mil-standards.com>, visited 12 Feb 2011.

Dugger, M. and D. Barley (2000). *Guidelines for the implementation of Large Screen Displays in an integrated command environment*. In SPIE proceedings on Integrated Command Environments, San Diego, 31 July 2000.

Endsley, M.R. (1995). *Theoretical underpinnings of Situation Awareness: A critical review*. In Proceedings of the International Conference on Analysis and Measurement of Situation of Awareness. Daytona Beach, FL, Embry-Riddle University, 1995.

Entin, E. E., Weil, S.A., See, K., Moore, R.A, Pattipati, K., Meirina, C., Kleinman, D.L., Downes-Martin, S., Hovanec, R.S, Bailey, A., Diedrich, F. and Serfaty, D. (2005), Test Environment for FORCENet Concepts, Aptima, Inc., Pacific Science & Engineering Group, University of Connecticut, Naval Postgraduate School, U.S. & Naval War College, 10<sup>th</sup> International Command & Control Research & Technology Symposium, Washington D.C., 14 June 2005.

Evdokiou, P., B. Thomas and R. Vernik. (2004). *Augmented synchronised planning spaces*. In The Ninth International Command and Control Research and Technology Symposium, Copenhagen, Denmark, 2004.

Gouin, D., S. Wark and R. Vernik (2009). TTCP Technical Report TR-C3I-4-2009, Dec 2009.

Gutwin, C., and Greenberg, S. (2002). *A descriptive framework of workspace awareness for real-time groupware*. In Computer Supported Cooperative Work, Kluwer Academic Press, Vol 11, No 3, pp 411-446, 2002.

Ivergard, T. And B. Hunt (2009), *Handbook of Control Room Design and Ergonomics - A Perspective for the Future*, Second Edition. CRC Press, 2009

Jedrysik, P., J. Moore, M. Brkowytych and R. Sweed (1999). *The Interactive Data Wall*, Air Force Research Lab, <http://handle.dtic.mil/100.2/ADA461019>, visited 12 Feb 2011.

Kumar, K., P.C. van Fenema and M.A. Von Glinow (2005). *Intense Collaboration in distributed work teams: Evolving patterns of dependencies and coordination*. In Managing Multinational Teams: Global Perspectives Advances in International Management, Vol 18, pp 127-154.

Letsky, M.P., N.W. Warner, S.M. Fiore and C.A.P. Smith (2008). *Macro-cognition in teams: Theories and methodologies*. Ashgate, Burlington VT, 2008.

McLeod, R.W. (1997). *Shared large screen displays report*. Nickleby and Co Ltd., 1997.

Mulgund, S., A. Travis, J. Standard, C.D. Means and A. Burgman (2003). *Shared user interfaces for dynamic collaboration in network-centric command centres*. 10th International Command and Control Research and Technology Symposium (ICCRTS), June 2003.

Oonk, H.M., H.S. Smallman, R.A. Moore and J.G. Morrison (2001). *Usage, Utility, and Usability of the Knowledge Wall for the Global 2000 War Game*. SPAWAR Systems Center, San Diego, Technical Report 1861, August 2001.

Oonk, H.M., J.H. Rogers, R.A. Moore, R.A. and J.G. Morrison (2002). *Knowledge Web concept and tools: Use, utility, and usability during the Global 2001 War Game*. SPAWAR Systems Center, San Diego, Technical Report 1882, March 2002.

Phillips M. (2008). *Livespaces technical overview*, Defence Science & Technology Organisation, DSTO-TR-2188, October 2008.

Rosen, M.A., S.M. Fiore, E. Salas, M. Letsky and N. Warner. (2008). *Tight coupling cognition: Understanding how communication and awareness drive coordination in teams*. The International C2 Journal. Vol 2, No 1, 2008.

Salas, E., Dickinson, T. L., Converse, S. and Tannenbaum, S. I. (1992), *Toward an understanding of team performance and training*, in R. W. Swezey and E. Salas (eds), *Teams: Their Training and Performance*, Norwood, NJ, pp 3-29.

Smallman, H.S., H.M. Oonk, R.A. Moore and J.G. Morrison (2001). *The Knowledge Wall for the Global 2000 War Game: Design solutions to match JOC user requirements*. SPAWAR Systems Center, Technical Report 1860, San Diego, August 2001.

TTCP (2010). *The Technical Cooperation Program web site*, <http://www.dtic.mil/ttcp/>, visited 12 Feb 2011.

Vernik, R., T. Blackburn and D. Bright (2003). *Extending interactive intelligent workspace architectures with enterprise services*. In Proceedings of Evolve2003, Enterprise Information Integration, Sydney, Australia, 2003.

Vernik M.J., S. Johnson and R.J. Vernik (2004). *e-Ghosts: Leaving virtual footprints in ubiquitous workspaces*. In Proceedings of the Fifth Australasian User Interface Conference (AUIC2004), Dunedin, NZ, pp 111-116, 2004.

Vernik R, S. Wark, R. Fortin, D. Monk, E. Bowman, P. Evdokiou, D. Gouin and P. Houghton (2006). *Large Group Displays in command and control environments: Knowledge Integration Task (KnowIT) results*. TTCP Report TR-C3I-TP2-2-2006, November 2006.

Vernik R.J., B. Kellar, J. Epps and C. Schremmer (2006). *HxI: a national research initiative in ICT-augmented human interactivity*.

[http://www.hxi.org.au/images/stories/documents/verniket\\_al\\_oct06.pdf](http://www.hxi.org.au/images/stories/documents/verniket_al_oct06.pdf). Visited 24 Feb 2011.

Vernik, R. (2010). *Intense collaboration environments*. The International C2 Journal. Special Issue on Intense Collaboration, 2010.

Weiser, M. (1991). *The computer of the 21st Century*. Scientific American, Sept. 1991, pp 94-104.

# Using Large Group Displays to Support Intensive Team Activities in C2 (Presentation #129)

16<sup>th</sup> ICCRTS  
Québec, 21-23 June 2011

Denis Guin  
DRDC Valcartier  
Canada

Rudi Vernik  
Steve Wark  
DSTO  
Australia



# Outline

- LGDs and Operation Centers
- Teams and Intense Collaboration
- Benefits of Large Group Displays (LGDs)
- Examples of LGDs use and challenges
- Guidelines
  - Information Content
  - Content and Display Management
  - Integration
  - Interaction

# Large Group Displays in an Operation Center



Prince Sultan Air Base  
Air Operating Center

Boeing Commercial Airplanes  
Operating Center



Lockheed Martin's Center  
for Innovation (Lighthouse)

Burlington Northern  
Operations Center



Network Line International

CA Regional Joint  
Operation Center



# Use of LGDs

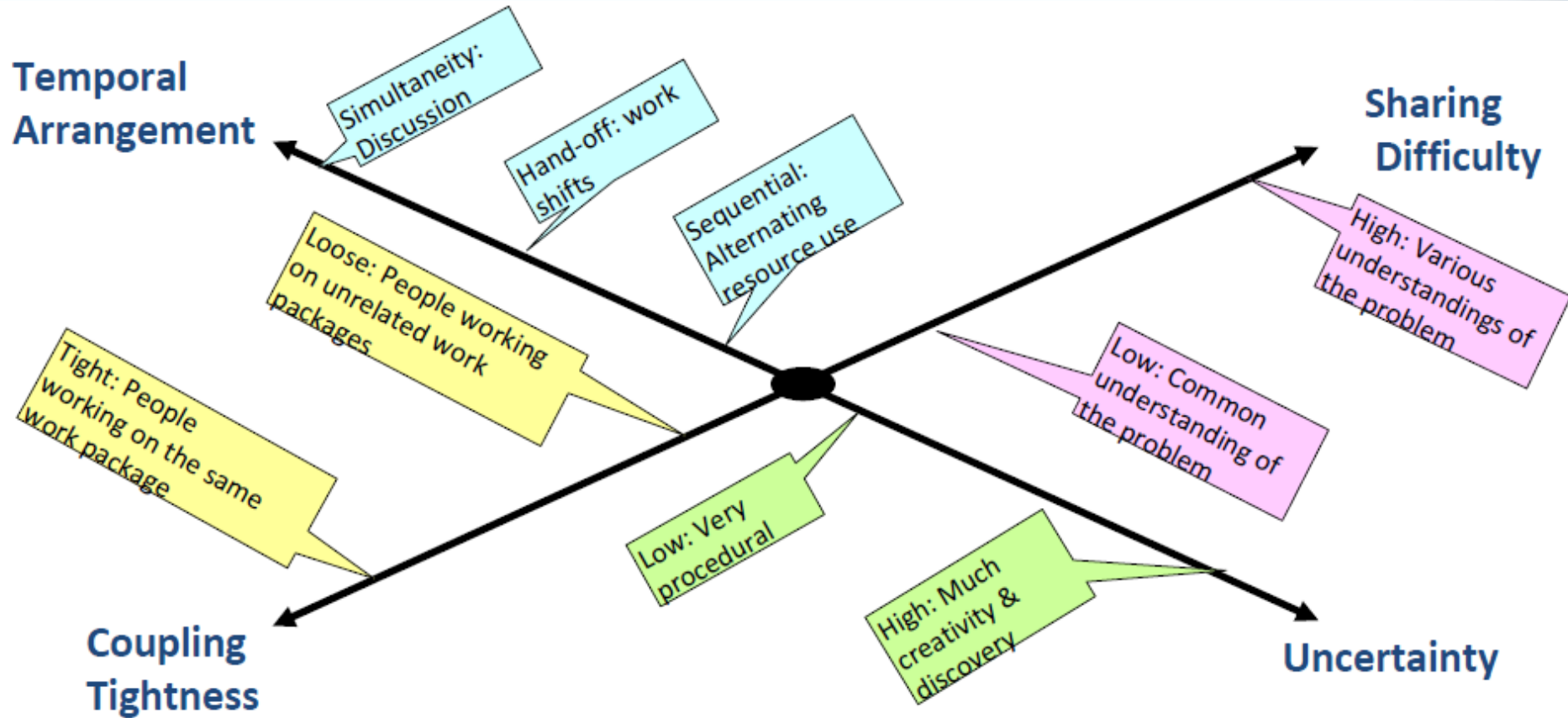
- Often used to
  - Conduct presentations
  - Show multiple new channels
  - Display a static view of the operational environment
- Not used to their full benefit
- Why?
  - Insufficient time is devoted to the broader design considerations
  - Technology often too complex to be used by most users and so only rudimentary features are used
- Unaddressed questions
  - Who are the LGDs intended for ?
  - What information should be displayed ?
  - How is the information shown controlled ?

# Teams and Collaborative Working in C2

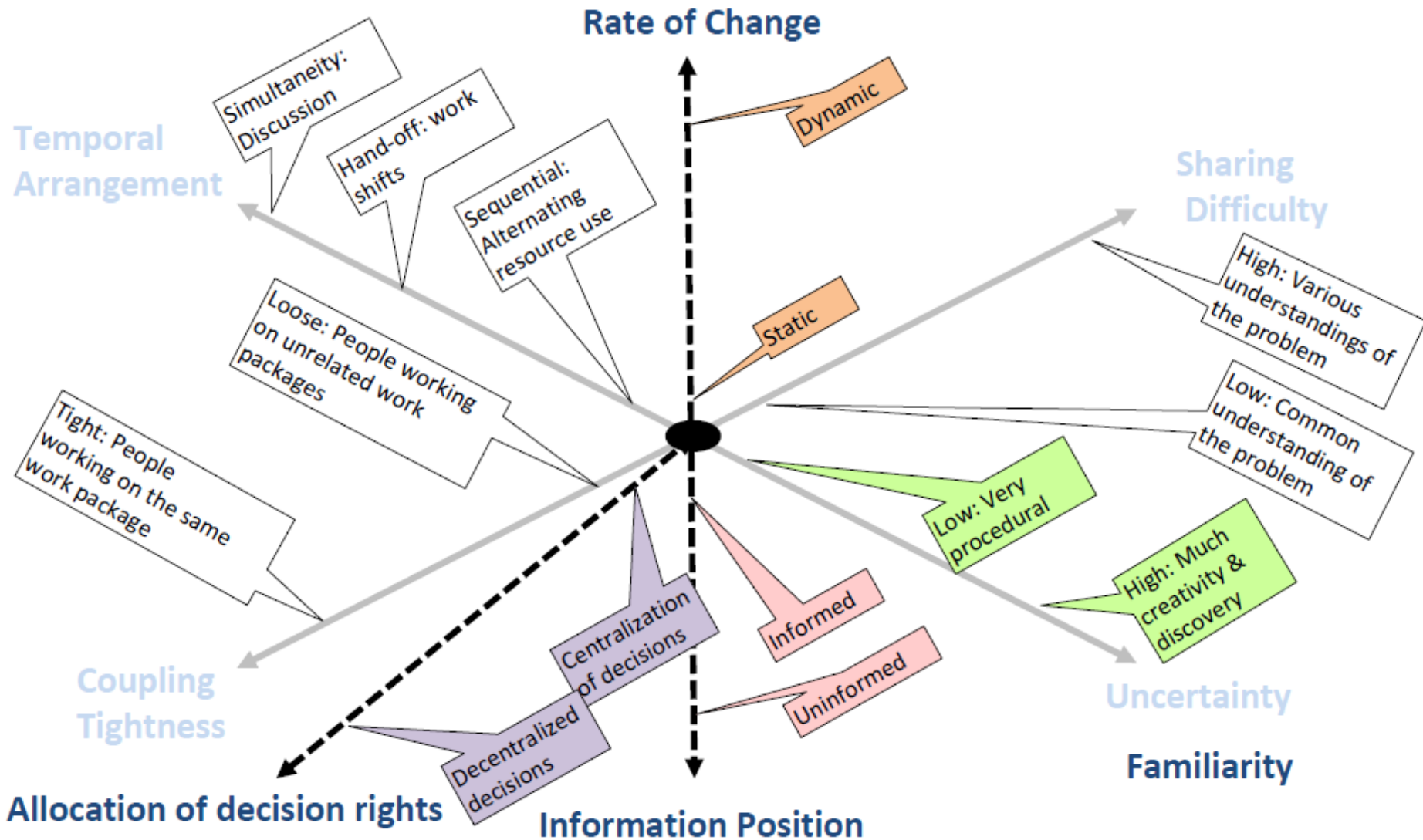
- Team
  - a distinguishable set **of two or more people**
  - who **interact dynamically, interdependently, and adaptively**
  - toward a **common and valued goal/objective/mission**
  - who have each been assigned **specific roles or functions** to perform and
  - who have a **limited life-span membership**

(Salas et al., 1992)

# Intense Collaboration



# Intense Collaboration and the Information Age



# Benefits of LGDs

- Support team working, when
  - Operators require concurrent use of information
  - Operators have common information needs
  - Operators have shared tasks
  - There are non-conflicting task needs
  - Feedback is required to be given to the whole team
  - Tasks require a common frame of reference
  - High-level summary or overview of information needs to be provided

McLeod (1997)

# SPAWAR Knowledge Wall



- Information Integration
- Summary Information
- Reducing the briefing cycle
- Information Quality

**METOC** Last Update: 31 May, 2000 09:42Z

<ul style="list-style-type: none"> <li><span style="color: yellow;">●</span> <a href="#">Today</a></li> <li><span style="color: yellow;">●</span> <a href="#">Tomorrow</a></li> <li><span style="color: red;">●</span> <a href="#">Long Range</a></li> </ul>	<p><b>Alerts</b></p> <p><a href="#">Trop. cycl. storm approaching high surf advisory</a></p> <p><b>Impacts</b></p> <p><a href="#">Small craft advisory of heavy seas of 4-5 meters</a></p> <p><b>Links</b></p> <p><a href="#">www.metoc.com</a> <a href="#">www.metoc.com</a></p>
--	---

# Key Knowledge Wall Concepts

- Provision of shared situation awareness
- Multiple displays viewable from a distance
- Information displayed is filtered, synthesized, fused, interpreted and summarized by specialists on the command staff
- Large displays to show the tactical situation
- Small displays used as to show graphically
  - Mission summaries, planned responses, rules of engagement, current and future operational information, alerts, video conf.
- Ability to drill down in html-formatted summaries, via hyperlinks
- Possibility to switch the small displays to the large displays
- Display on the age and reliability of the information
- Use of a briefing tool

# MITRE SideView



Overview of mission objectives, based on warning order from CJCS

Current state of development of mission analysis components

Task timeline view customized for knowledge wall

FBV-type COP display customized for knowledge wall

FBV drilldowns

# Key MITRE SideView Concepts

- Situation awareness: Common Operational Picture display incorporating multiple overlays
  - Mission overview
  - Current status
  - Task timeline with summary information
- Large display area
- Information viewable from a distance
- Team / Task related information
- Publish/subscribe mechanism / Information manager

# AFRL Interactive Data Wall

- Large seamless working area
- Multimodal interaction



# Key Data Wall Concepts

- Shared situation awareness & collaborative working
- Large seamless display surface
  - 3840 x 1024 pixels across a 12' x 3' screen area
- Multimodal interaction
  - Voice, wireless pointer, mouse, electronic grease pencil
- Multiple concurrent users
- Data display elements include detailed terrain, land route maps, real-time audio/video communications, airborne surveillance and intelligence information, archived geographic database information, and modeling and simulation information

# DSTO LiveSpaces



**Media Translation**

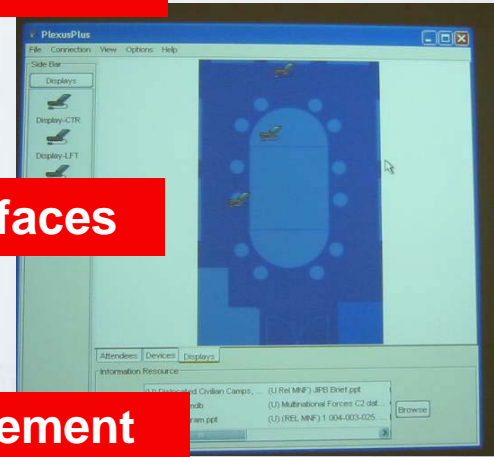


**Natural Interaction**

**Coordination and Orchestration**



**TeamSpace Interfaces**

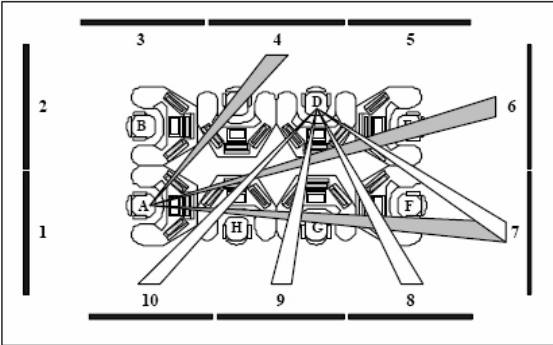
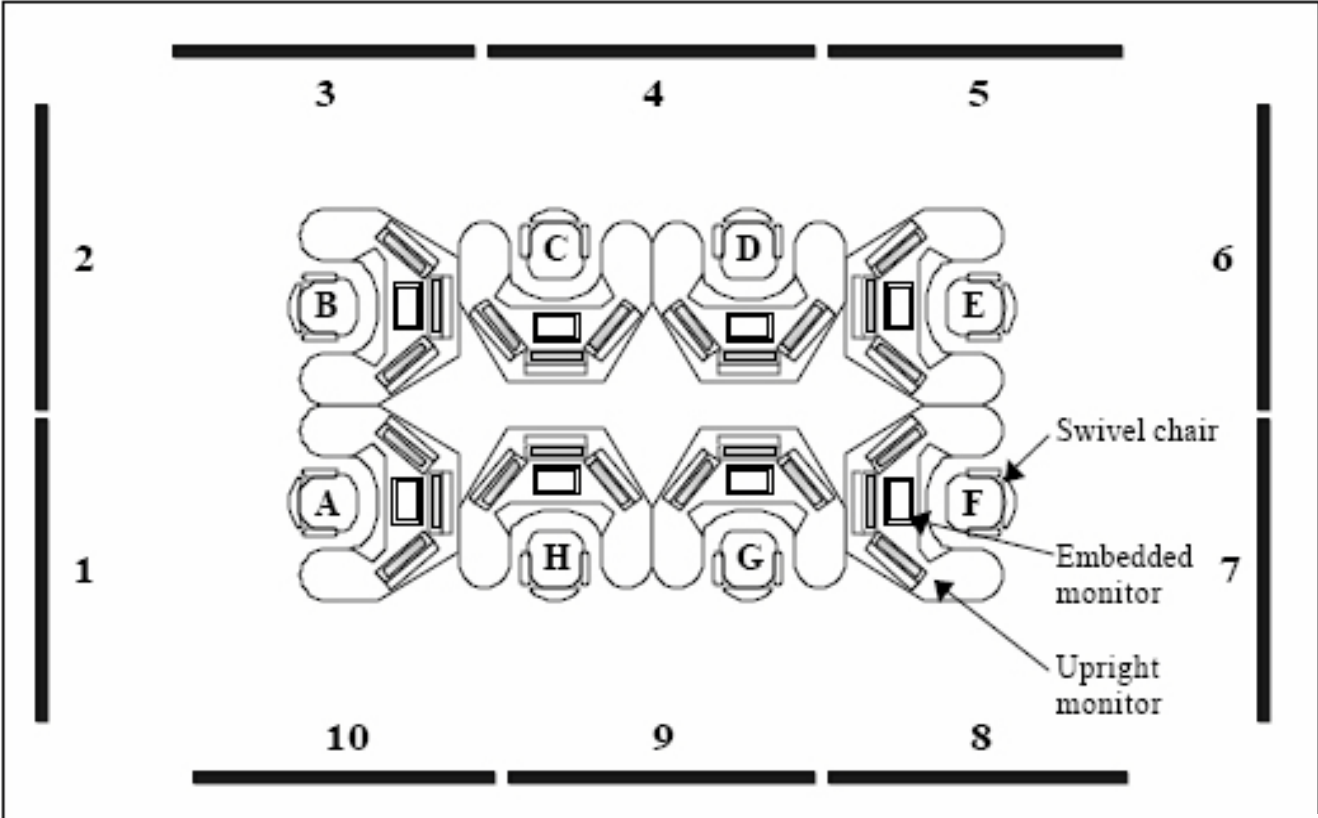


**Session & Information Management**

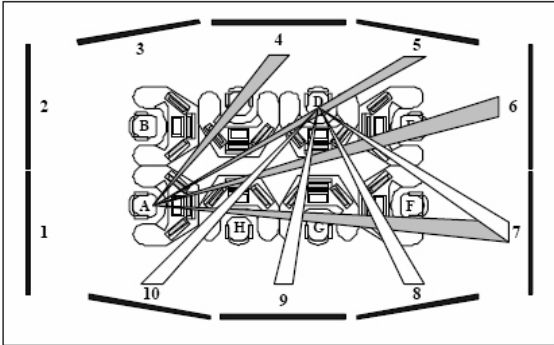
# Key LiveSpaces Concepts

- Collaborative working & shared situation awareness
- Integration and collaboration infrastructure
  - Includes displays, smart boards, room facilities (lights, speakers), cameras
- Multiuser and natural interaction
- Collocated and distributed collaboration
- Awareness of
  - Availability of particular facilities and applications
  - Faults that might impact on the team activities

# NSWC Integrated Command Environment (ICE) Lab



(a)

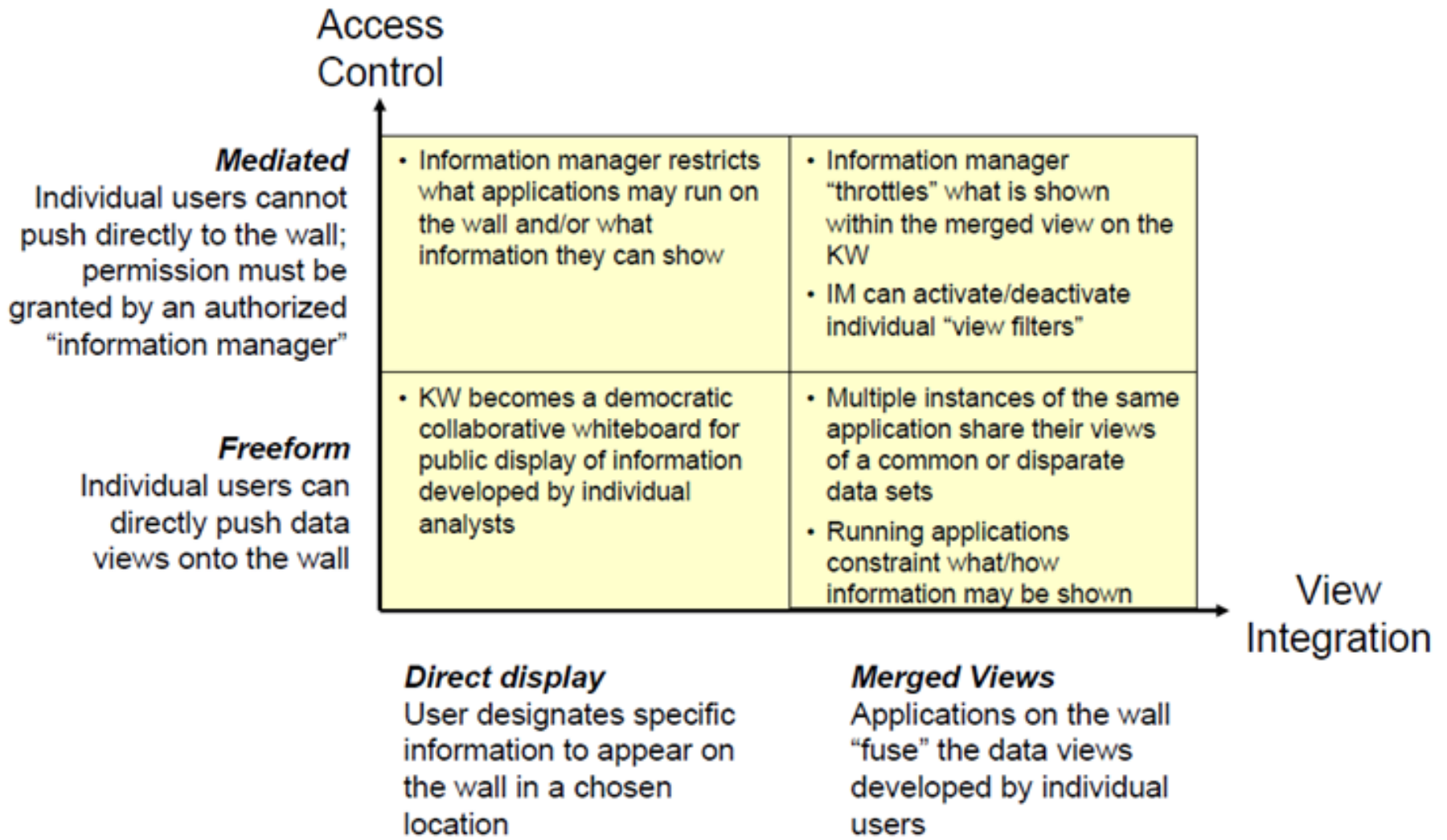


(b)

# Key ICE Lab Design Concepts

- Shared situation awareness
- Key analysis of the human engineering factors
  - Legibility
  - Required head rotation and viewing angle
  - Lack of interference from intervening objects, personnel
  - Ambient lighting
- Information on LGDs should assist multiple operators in the completion of their respective tasks
- Use of redundant displays

# Content and Display Management



# Conclusion - Need proper design

- Information Content
  - What should be displayed?
  - Why is it needed?
    - Shared situation awareness
      - Awareness of the operational situation
      - Awareness of the internal workings of the team
    - Collaborative working
      - When should it be provided?
      - How should the information be provided?
        - Display simplification techniques such as providing summary information, highlighting, grouping and attention management
  - What is the usability (e.g. size, format and legibility)

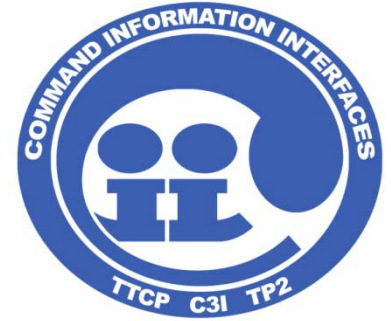
# Conclusion

- Content and Display Management
  - Manual and automated
  - Organization of the information
- Integration
  - Integration with the C2 tasks and processes
  - Redundancy
- Interaction
  - Multi-user and multi-modal
  - Natural
  - Distributed collaboration
  - Drill down

# Acknowledgement



## TTCP C3I TP2 (Command Information Interfaces)



- This paper was developed under the auspices of The Technical Cooperation Program (TTCP), Command, Control, Communications and Information (C3I) Systems Group, Command Information Interfaces (CII) Technical Panel 2 (TP2). We would like to thank C3I TP2 members Mr. Don Monk (US-AFRL), Mr. Peter Houghton (UK), Dr. Elizabeth Bowman (US-ARL) and Mr. Peter Evdokiou (AUS) for their contributions.



[denis.gouin@drdc-rddc.gc.ca](mailto:denis.gouin@drdc-rddc.gc.ca)