

Sibling Rivalries

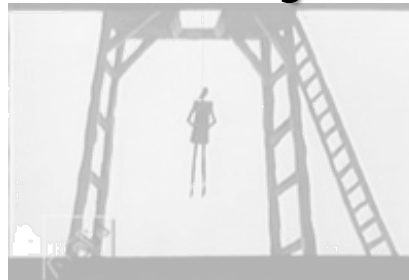
Reconciling Systems and Software Engineering

Richard Turner

Stevens Institute of Technology
rtturner@stevens.edu

Systems and Software Conference
Salt Lake City, Utah
April 2010

Heresy?



- ◆ From Greek word *hairetikos* "able to choose" or "to pick and choose"
- ◆ Good engineering is about "picking and choosing" the right approaches
- ◆ I stand by my heresy!

Report Documentation Page

Form Approved
OMB No. 0704-0188

Public reporting burden for the collection of information is estimated to average 1 hour per response, including the time for reviewing instructions, searching existing data sources, gathering and maintaining the data needed, and completing and reviewing the collection of information. Send comments regarding this burden estimate or any other aspect of this collection of information, including suggestions for reducing this burden, to Washington Headquarters Services, Directorate for Information Operations and Reports, 1215 Jefferson Davis Highway, Suite 1204, Arlington VA 22202-4302. Respondents should be aware that notwithstanding any other provision of law, no person shall be subject to a penalty for failing to comply with a collection of information if it does not display a currently valid OMB control number.

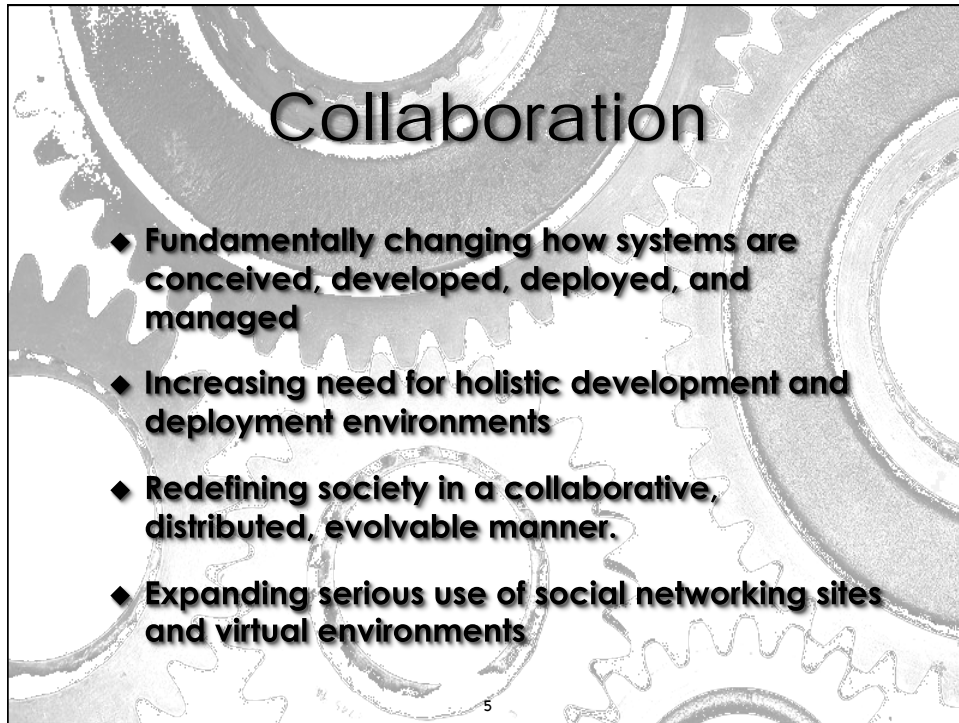
1. REPORT DATE 10 APR 2010		2. REPORT TYPE		3. DATES COVERED 00-00-2010 to 00-00-2010	
4. TITLE AND SUBTITLE Sibling Rivalries Reconciling Systems and Software Engineering				5a. CONTRACT NUMBER	
				5b. GRANT NUMBER	
				5c. PROGRAM ELEMENT NUMBER	
6. AUTHOR(S)				5d. PROJECT NUMBER	
				5e. TASK NUMBER	
				5f. WORK UNIT NUMBER	
7. PERFORMING ORGANIZATION NAME(S) AND ADDRESS(ES) Stevens Institute of Technology, CastlePoint on Hudson, Hoboken, NJ, 07030-5991				8. PERFORMING ORGANIZATION REPORT NUMBER	
9. SPONSORING/MONITORING AGENCY NAME(S) AND ADDRESS(ES)				10. SPONSOR/MONITOR'S ACRONYM(S)	
				11. SPONSOR/MONITOR'S REPORT NUMBER(S)	
12. DISTRIBUTION/AVAILABILITY STATEMENT Approved for public release; distribution unlimited					
13. SUPPLEMENTARY NOTES Presented at the 22nd Systems and Software Technology Conference (SSTC), 26-29 April 2010, Salt Lake City, UT. Sponsored in part by the USAF. U.S. Government or Federal Rights License					
14. ABSTRACT					
15. SUBJECT TERMS					
16. SECURITY CLASSIFICATION OF:			17. LIMITATION OF ABSTRACT Same as Report (SAR)	18. NUMBER OF PAGES 22	19a. NAME OF RESPONSIBLE PERSON
a. REPORT unclassified	b. ABSTRACT unclassified	c. THIS PAGE unclassified			

Changes: Problems or opportunities?



Growing Complexity

- ◆ **Number of interoperating components/systems**
- ◆ **Connectivity and interdependencies**
- ◆ **Adaptation and emergent behavior**
- ◆ **Impact of technical, social, political, economic, behavioral and environmental implications ...**
- ◆ **Decrease in central control & reliability of subsystems and services**

A slide titled "Collaboration" with a background of interlocking gears. The title is centered at the top. Below it is a bulleted list of four points.

Collaboration

- ◆ **Fundamentally changing how systems are conceived, developed, deployed, and managed**
- ◆ **Increasing need for holistic development and deployment environments**
- ◆ **Redefining society in a collaborative, distributed, evolvable manner.**
- ◆ **Expanding serious use of social networking sites and virtual environments**

5

A slide titled "Increasing Criticality" with a background of a calculator and documents. The title is centered at the top. Below it is a bulleted list of one point.

Increasing Criticality

- ◆ **Systems are no longer a matter of convenience, but necessary for daily existence**

6

Tenuous Security

- ◆ Security is paramount (at least in some places)
- ◆ Increasing criticality increases target value
- ◆ Increasing complexity and interconnectedness increases vulnerability.
- ◆ Security of enterprises composed of unreliable and independently evolving systems
- ◆ Legacy, COTS, open source and other software of unknown provenance are systems issues

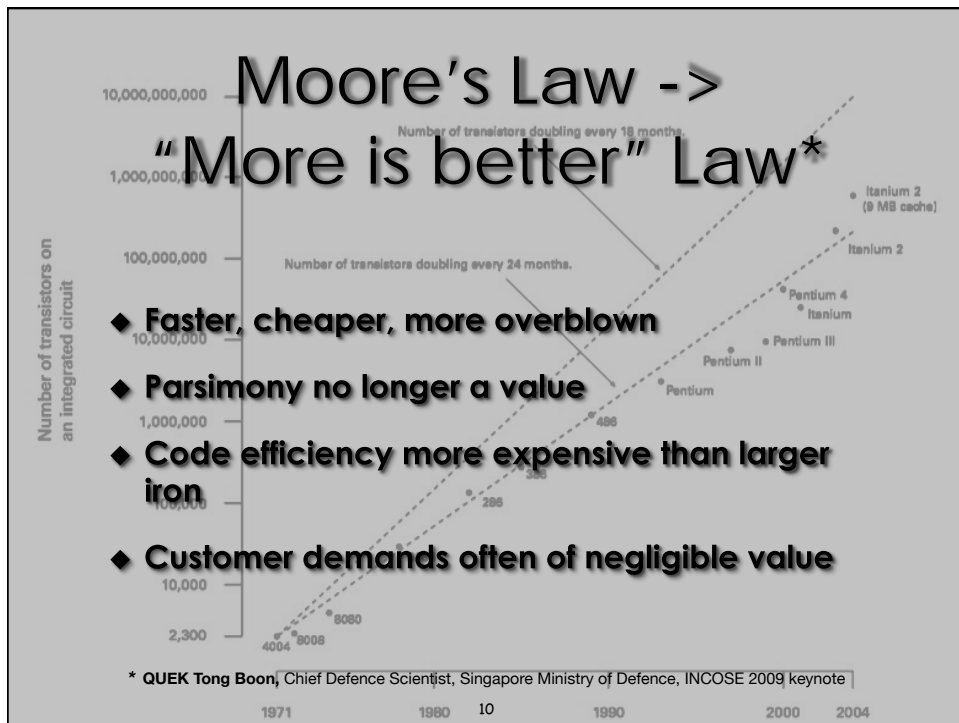
Compressed Time

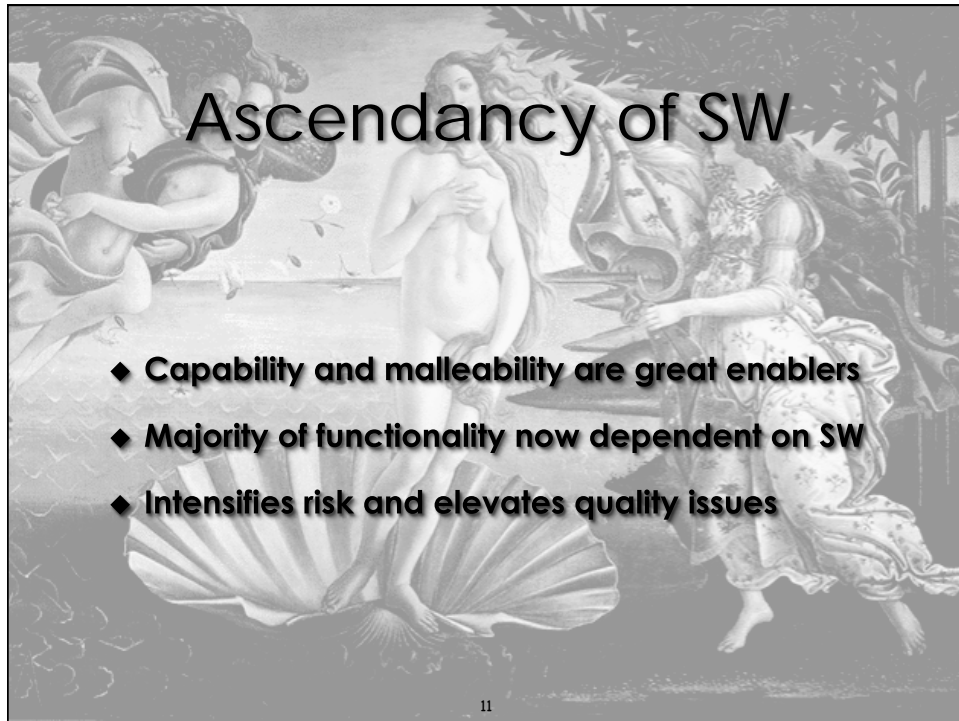
- ◆ Compressed notion of time based on relative change
- ◆ Customer expectations and competitive demands shorten lifecycles
- ◆ Customizable interfaces and mashing give users instant gratification
- ◆ Decisions made with possibly more data but often less analysis

Evolved Workforce

- ◆ Born networked in a rapidly changing problem and solution space
- ◆ Nurtured with instantaneous feedback
- ◆ Increasingly more action oriented
- ◆ Less trusting of extensive analysis

9

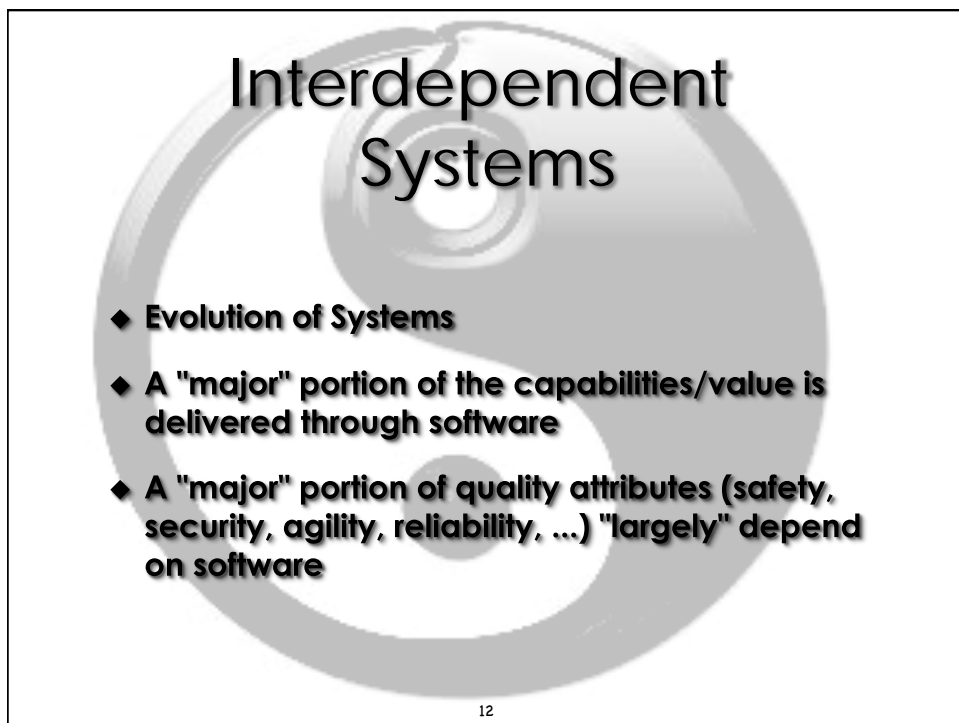




Ascendancy of SW

- ◆ **Capability and malleability are great enablers**
- ◆ **Majority of functionality now dependent on SW**
- ◆ **Intensifies risk and elevates quality issues**

11



Interdependent Systems

- ◆ **Evolution of Systems**
- ◆ **A "major" portion of the capabilities/value is delivered through software**
- ◆ **A "major" portion of quality attributes (safety, security, agility, reliability, ...) "largely" depend on software**

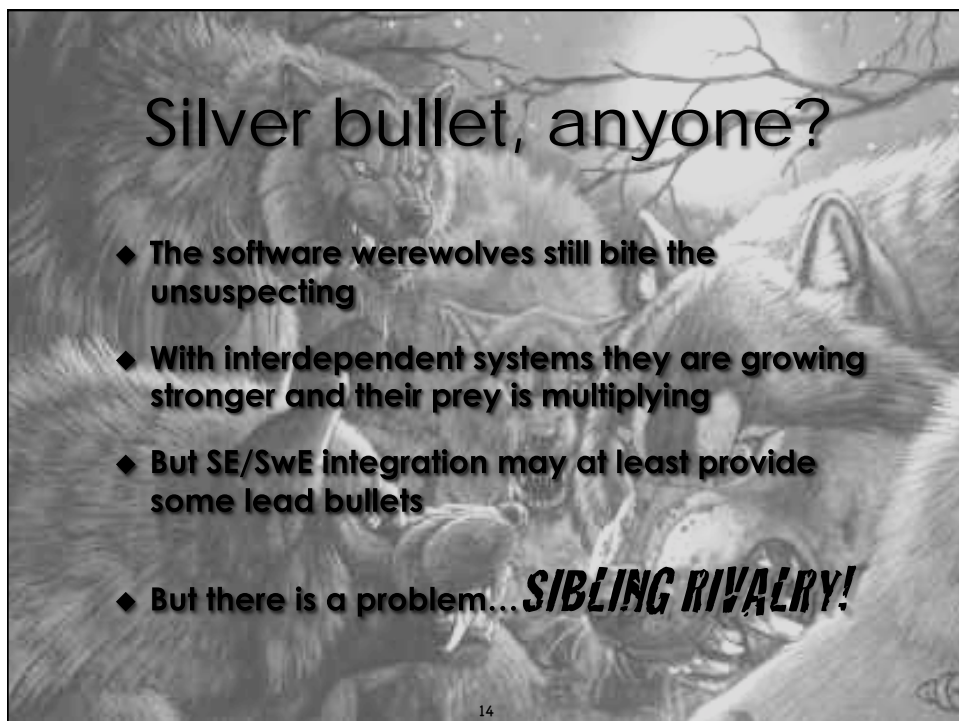
12



Fred Brooks' prowling werewolves

- Invisibility**
- Complexity**
- Conformity**
- Changeability**

13



Silver bullet, anyone?

- ◆ The software werewolves still bite the unsuspecting
- ◆ With interdependent systems they are growing stronger and their prey is multiplying
- ◆ But SE/SwE integration may at least provide some lead bullets
- ◆ But there is a problem... ***SIBLING RIVALRY!***

14

Why are SE and SwE siblings?

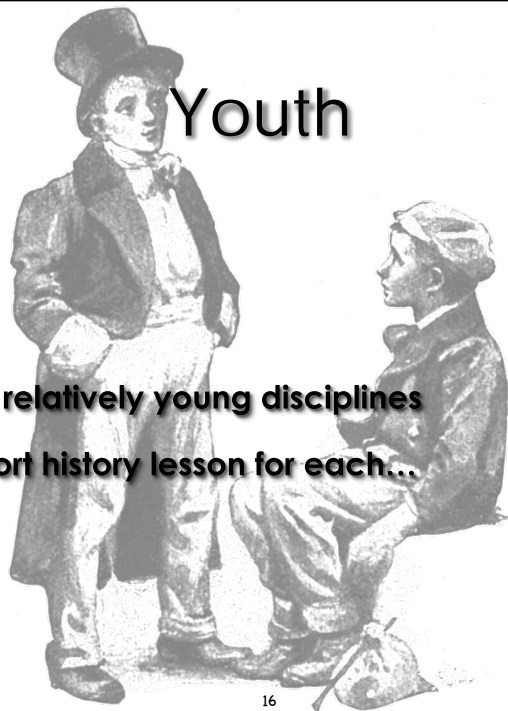


- ◆ Youth (age?)
- ◆ Identity
- ◆ Practicality
- ◆ Respect (not!)

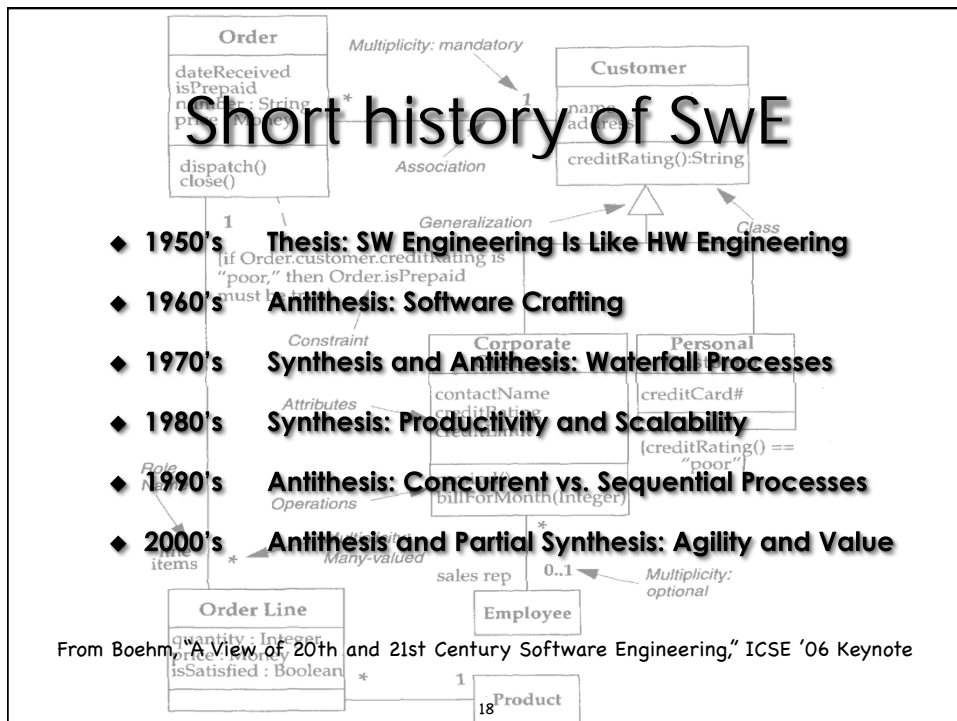
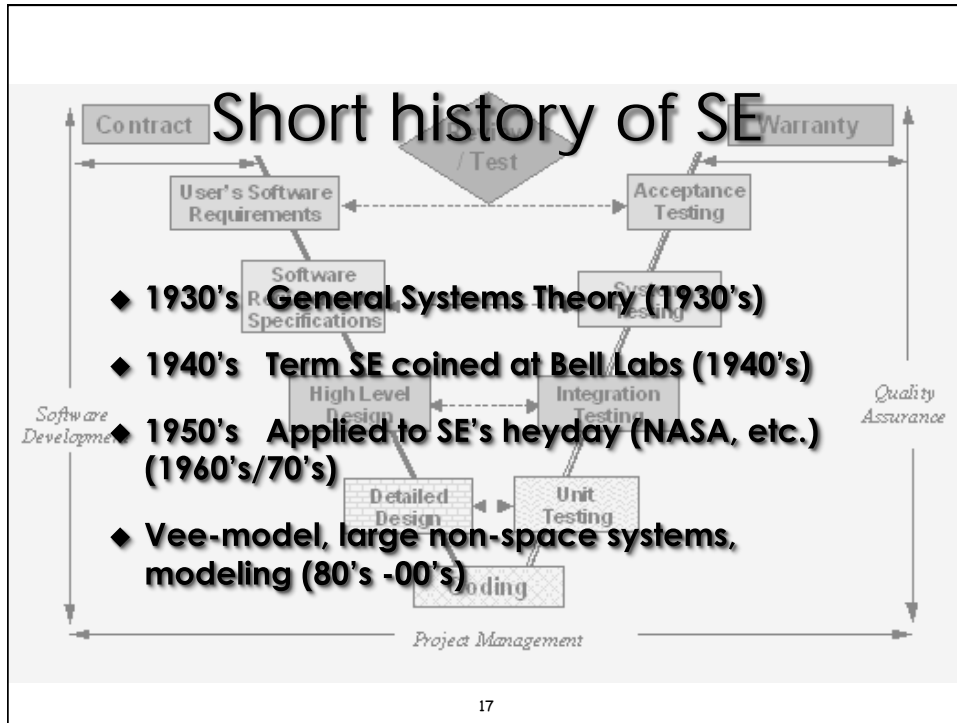
15

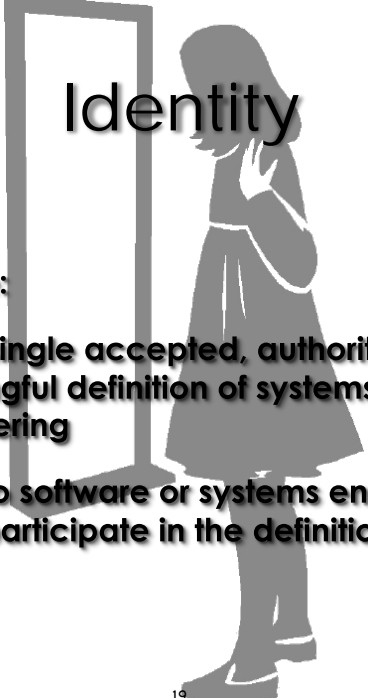
Youth

- ◆ Both relatively young disciplines
- ◆ A short history lesson for each...



16

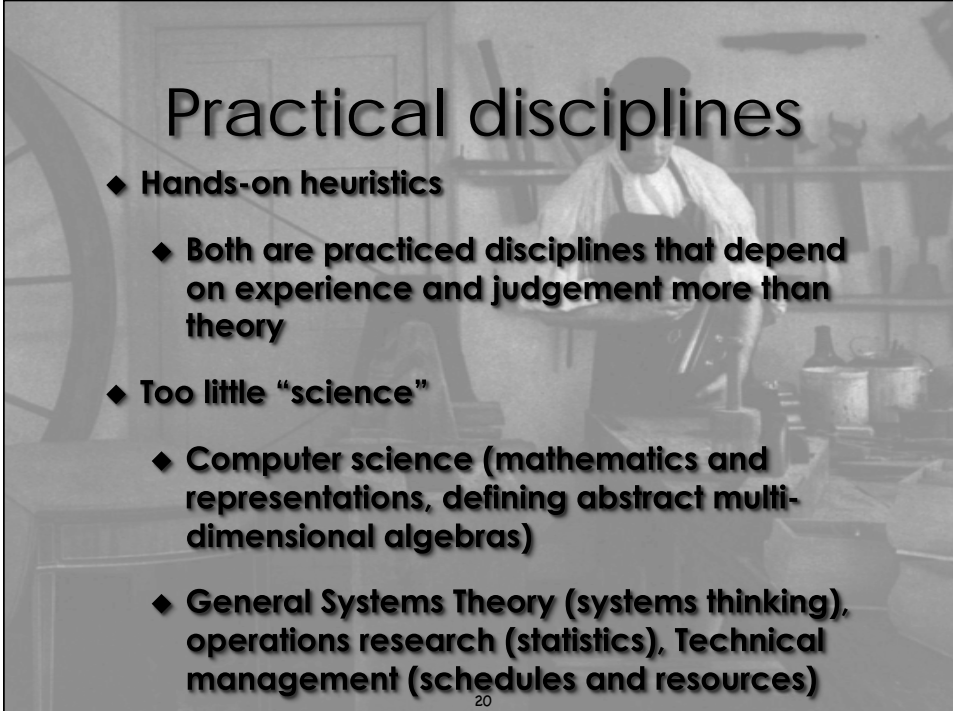




Identity

- ◆ **Challenge:**
 - ◆ **Find a single accepted, authoritative and meaningful definition of systems or software engineering**
 - ◆ **Find two software or systems engineers (who didn't participate in the definition) that agree with it**

19



Practical disciplines

- ◆ **Hands-on heuristics**
 - ◆ **Both are practiced disciplines that depend on experience and judgement more than theory**
- ◆ **Too little "science"**
 - ◆ **Computer science (mathematics and representations, defining abstract multi-dimensional algebras)**
 - ◆ **General Systems Theory (systems thinking), operations research (statistics), Technical management (schedules and resources)**

20

No respect

- ◆ **Unrecognized children of other disciplines**
- ◆ **SE first thing cut (after documentation)**
- ◆ **Everybody can program**
- ◆ **Communication issues; lack of “concreteness”**



21

Why are SE and SwE Rivals?

- ◆ **Similarity**
- ◆ **Language**
- ◆ **Acknowledgement**
- ◆ **Blame**



22

Similarity breeds hubris

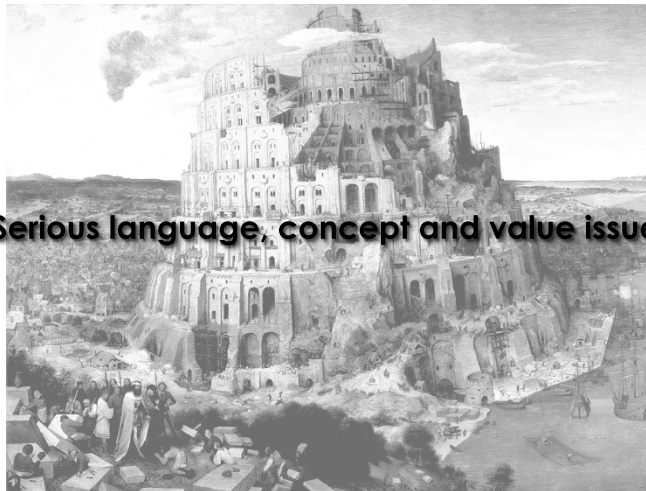


**That which makes them siblings
makes them rivals!**

23

Siblings that speak different dialects

◆ **Serious language, concept and value issues**



24

Competition for acknowledgement

- ◆ Often vying for reduced funding
- ◆ Both perceived as expenses rather than assets



25

Poor results lead to finger pointing



26

DIFFERENCES



27

Different backgrounds

- ◆ SE: "Hard engineers" of one sort or another
- ◆ SWE: Soft mathematicians and second careers

28

SE Stereotypes



- ◆ **White shirts and pocket protectors**
- ◆ **Boxes and arrows and piles of documentation**
- ◆ **Overhead slowing progress**

29

SwE stereotypes (bad)



- ◆ **Cowboy programmers (earrings and ponytails)**
- ◆ **Hackers with malicious intent**
- ◆ **Continuous reinvention of notations and vocabulary**

30

SwE stereotypes (Good?)



31

Reconciliation is critical

- ◆ No need to create a new hybrid discipline
- ◆ Each discipline must learn from the other
 - ◆ Software engineers can embrace a broader systems view – particularly in cyber-physical systems
 - ◆ Systems engineers need to find ways to be more agile to be relevant in the rapidly changing environment

32

So what do we do about it?

- ◆ **Research**
(SERC, Touchpoints, Cyber-Physical Systems)
- ◆ **Education**
(GSWERC, BKCASE)
- ◆ **Balancing**
(Incremental Commitment Model)
- ◆ **Transformation**
(Systems Engineering Transformation)

33

Systems Engineering Research Center

- ◆ **A University Affiliated Research Center established in 2008 and sponsored by US DoD**
- ◆ **SE research supports development, integration, testing and sustainability of complex defense systems, enterprises and services**
- ◆ **Stevens Institute leads the 20 universities and research centers that make up SERC**
- ◆ **www.sercuarc.org**



Stevens' Main Campus, Hoboken, NJ

8/10/2009

34

SERC research thrusts

- ◆ Enterprise Responsiveness
- ◆ Systems Science and Complexity
- ◆ Systems Engineering Workforce
- ◆ Program and SE Integration
- ◆ Life Cycle Systems Engineering Processes

SYSTEMS ENGINEERING
Research Center

35

Pyster-Turner Touchpoints

- ◆ Simple framework for discussion of SE/SwE integration from practitioners POV
- ◆ Describes Touchpoints where the two disciplines interact, Faults and Resolution Strategies
- ◆ Faults can be a Gap, Waste or a Clash of Vocabulary, Value, or Mental Model

36

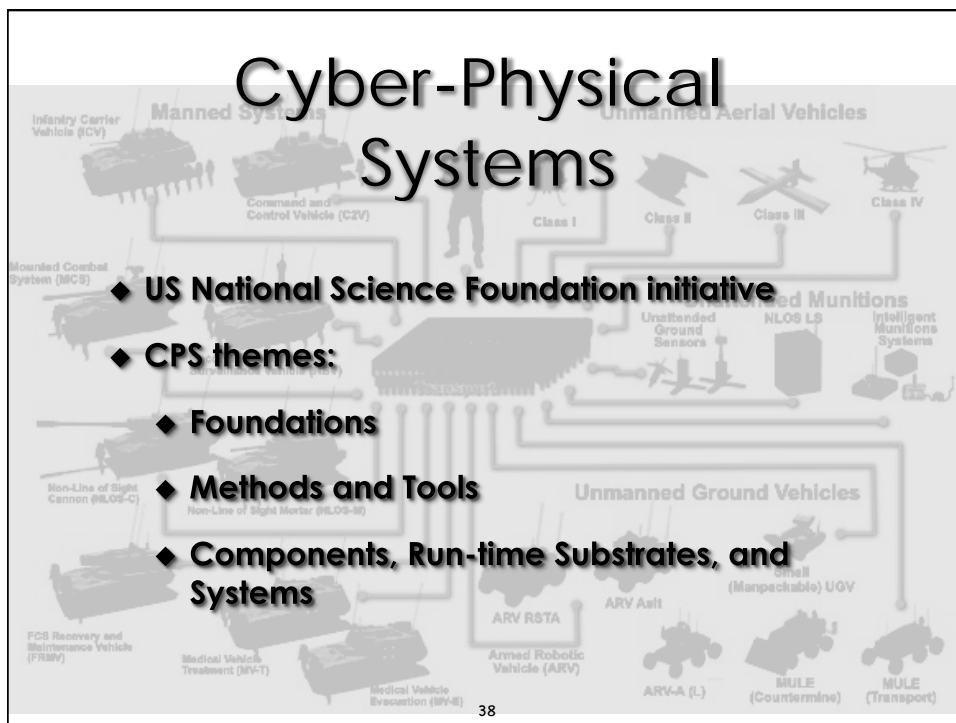
Example Touchpoint

Touchpoint	Fault	Type
Software Requirements	SW specifications that limit trade space	Clash – Mental Model

Resolution Strategies
SE defines software requirements as “what” not “how”
SE and SwE collaborate in to develop of SW requirements

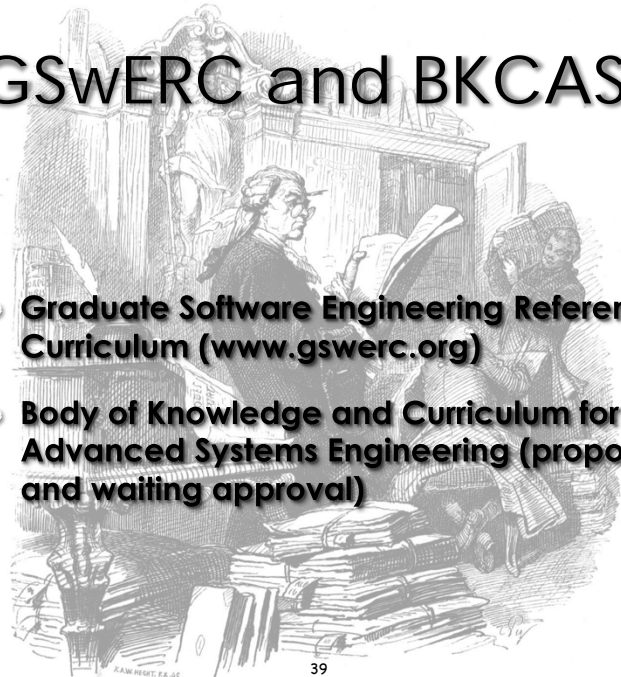
Drawn from initial piloting with 10 varied US DoD programs

Cyber-Physical Systems

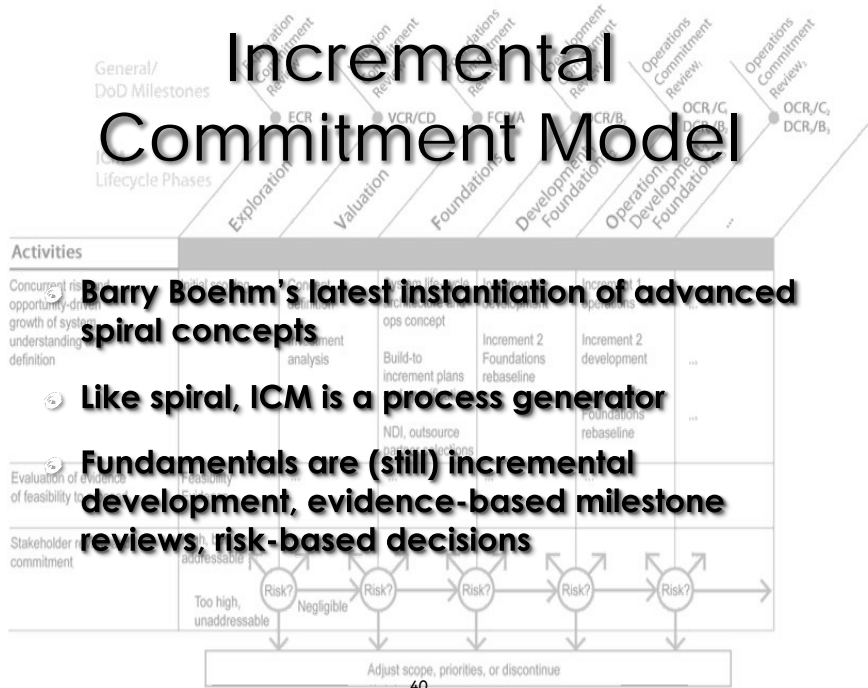


GSwERC and BKCASE

- Graduate Software Engineering Reference Curriculum (www.gswerc.org)
- Body of Knowledge and Curriculum for Advanced Systems Engineering (proposed and waiting approval)



Incremental Commitment Model

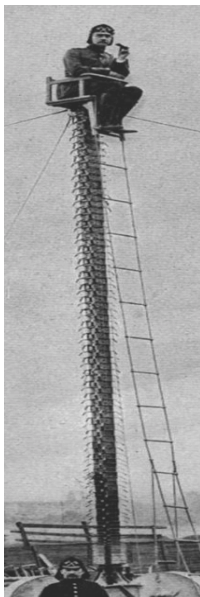


Systems Engineering Transformation

- ④ **Proposed Systems Engineering Research Center (SERC) Project to rapidly evolve SE**
- ④ **SE for net-centric systems with dynamic requirements and technologies, short planning cycles and 21st c. workforce**
- ④ **Must be Agile, Integrated, Lean, Leveraged, Extensible, Implementable**
- ④ **Work begun with methods/processes/tools survey and research on agile CONOPS (survey found at www.sercuarc.org/AgileSE)**

41

Some Final Observations



- ◆ **Interdependent systems are here to stay**
- ◆ **Complexity, criticality, collaboration, security, speed and human nature place increased pressure on systems and software engineering capabilities**
- ◆ **Reconciliation is needed: Each needs to learn from the other**
- ◆ **Progress is slow but accelerating with new research initiatives**

42

