



AFRL-RZ-WP-TP-2012-0142

**EFFECTS OF THE VARIABLE LORENTZ FORCE ON THE
CRITICAL CURRENT IN ANISOTROPIC
SUPERCONDUCTING THIN FILMS (POSTPRINT)**

**B. Maiorov, Q.X. Jia, H. Zhou, S.R. Foltyn, L. Civale, H. Wang, and J.L. MacManus-Driscoll
Los Alamos National Laboratory**

**A. Kursunovic
University of Cambridge**

**T.J. Haugan and P.N. Barnes
Mechanical Energy Conversion Branch
Energy/Power/Thermal Division**

FEBRUARY 2012

Approved for public release; distribution unlimited.

See additional restrictions described on inside pages

STINFO COPY

© 2007 IEEE

**AIR FORCE RESEARCH LABORATORY
PROPULSION DIRECTORATE
WRIGHT-PATTERSON AIR FORCE BASE, OH 45433-7251
AIR FORCE MATERIEL COMMAND
UNITED STATES AIR FORCE**

REPORT DOCUMENTATION PAGE				Form Approved OMB No. 0704-0188	
<p>The public reporting burden for this collection of information is estimated to average 1 hour per response, including the time for reviewing instructions, searching existing data sources, gathering and maintaining the data needed, and completing and reviewing the collection of information. Send comments regarding this burden estimate or any other aspect of this collection of information, including suggestions for reducing this burden, to Department of Defense, Washington Headquarters Services, Directorate for Information Operations and Reports (0704-0188), 1215 Jefferson Davis Highway, Suite 1204, Arlington, VA 22202-4302. Respondents should be aware that notwithstanding any other provision of law, no person shall be subject to any penalty for failing to comply with a collection of information if it does not display a currently valid OMB control number. PLEASE DO NOT RETURN YOUR FORM TO THE ABOVE ADDRESS.</p>					
1. REPORT DATE (DD-MM-YY) February 2012		2. REPORT TYPE Journal Article Postprint		3. DATES COVERED (From - To) 04 April 2005 – 04 April 2007	
4. TITLE AND SUBTITLE EFFECTS OF THE VARIABLE LORENTZ FORCE ON THE CRITICAL CURRENT IN ANISOTROPIC SUPERCONDUCTING THIN FILMS (POSTPRINT)				5a. CONTRACT NUMBER In-house	
				5b. GRANT NUMBER	
				5c. PROGRAM ELEMENT NUMBER 62203F	
6. AUTHOR(S) B. Maiorov, Q.X. Jia, H. Zhou, S.R. Foltyn, L. Civale, H. Wang, and J.L. MacManus-Driscoll (Los Alamos National Laboratory) A. Kursunovic (University of Cambridge) T.J. Haugan and P.N. Barnes (AFRL/RZPG)				5d. PROJECT NUMBER 3145	
				5e. TASK NUMBER 32	
				5f. WORK UNIT NUMBER 314532ZE	
7. PERFORMING ORGANIZATION NAME(S) AND ADDRESS(ES) Los Alamos National Laboratory Superconductivity Technology Center, K763 Los Alamos, NM 87545 ----- University of Cambridge Cambridge, UK				8. PERFORMING ORGANIZATION REPORT NUMBER AFRL-RZ-WP-TP-2012-0142	
9. SPONSORING/MONITORING AGENCY NAME(S) AND ADDRESS(ES) Air Force Research Laboratory Propulsion Directorate Wright-Patterson Air Force Base, OH 45433-7251 Air Force Materiel Command United States Air Force				10. SPONSORING/MONITORING AGENCY ACRONYM(S) AFRL/RZPG	
				11. SPONSORING/MONITORING AGENCY REPORT NUMBER(S) AFRL-RZ-WP-TP-2012-0142	
12. DISTRIBUTION/AVAILABILITY STATEMENT Approved for public release; distribution unlimited.					
13. SUPPLEMENTARY NOTES Journal article published in <i>IEEE Transactions on Applied Superconductivity</i> , Vol. 17, No. 2, June 2007. © 2007 IEEE. The U.S. Government is joint author of this work and has the right to use, modify, reproduce, release, perform, display, or disclose the work. PA Case Number: AFRL/WS 07-0890; Clearance Date: 04 Apr 2007. Work on this effort was completed in 2007. This paper has color content.					
14. ABSTRACT When a current is applied perpendicular to the vortex lattice (VL), Lorentz force may cause the VL to drift and flux-flow dissipation is observed. When the current is parallel to the applied magnetic field in a Force-Free (FF) configuration, a dissipation is also observed but at higher values of applied current. It has been suggested that pinning as well as free surfaces play an important role in the stabilization of the VL in the FF configuration. In YBa ₂ Cu ₃ O ₇ thin films, FF configurations can be obtained when H ab with the current flowing parallel to the ab-planes. In this work we study the influence of thickness, growth method and pinning centers on the dissipation mechanism at Variable Lorentz Force and FF configurations. Comparisons of experiments done at Maximum and Variable Lorentz Force show that there are two pinning regimes when the field is rotated in these configurations; one consistent with only a decrease in the applied force, indicated by the overlap of the power law exponent of the current-voltage curves as the field is rotated toward the ab-planes, and another very close to the ab-planes, where the dissipation characteristics change.					
15. SUBJECT TERMS current, vortex lattice, configuration, applied force, pinning, thickness, growth method, mechanism, dissipation, thin films					
16. SECURITY CLASSIFICATION OF:			17. LIMITATION OF ABSTRACT: SAR	18. NUMBER OF PAGES 10	19a. NAME OF RESPONSIBLE PERSON (Monitor) Timothy J. Haugan 19b. TELEPHONE NUMBER (Include Area Code) N/A
a. REPORT Unclassified	b. ABSTRACT Unclassified	c. THIS PAGE Unclassified			

Effects of the Variable Lorentz Force on the Critical Current in Anisotropic Superconducting Thin Films

B. Maiorov, Q. X. Jia, H. Zhou, H. Wang, Y. Li, A. Kursunovic, J. L. MacManus-Driscoll, T. J. Haugan, P. N. Barnes, S. R. Foltyn, and L. Civale

Abstract—When a current is applied perpendicular to the vortex lattice (VL), Lorentz force may cause the VL to drift and flux-flow dissipation is observed. When the current is parallel to the applied magnetic field in a Force-Free (FF) configuration, a dissipation is also observed but at higher values of applied current. It has been suggested that pinning as well as free surfaces play an important role in the stabilization of the VL in the FF configuration. In $\text{YBa}_2\text{Cu}_3\text{O}_7$ thin films, FF configurations can be obtained when $\mathbf{H}||ab$ with the current flowing parallel to the ab -planes. In this work we study the influence of thickness, growth method and pinning centers on the dissipation mechanism at Variable Lorentz Force and FF configurations. Comparisons of experiments done at Maximum and Variable Lorentz Force show that there are two pinning regimes when the field is rotated in these configurations; one consistent with only a decrease in the applied force, indicated by the overlap of the power law exponent of the current-voltage curves as the field is rotated toward the ab -planes, and another very close to the ab -planes, where the dissipation characteristics change.

Index Terms—Critical current, Lorentz force, superconducting films, superconducting tapes, vortex pinning.

I. INTRODUCTION

HIGH temperature superconductors (HTS) are aimed for use in several applications such as cables and rotating machinery. In order to reach that goal high values of critical current I_c and critical current density J_c must be attained both at self-field and in presence of an applied magnetic field (\mathbf{H}). Great advances have been done in both of these areas, by reducing the J_c thickness dependence [1] as well as by increasing the in-field J_c in different field and angular regimes [2]–[4]. However, most of the in-field J_c studies have been made using the maximum Lorentz force configuration (i.e. $J \perp \mathbf{H}$), but in applications this is not always the case. Therefore it is important to study other configurations where J and \mathbf{H} are not perpendicular to each other, with the goal of identifying which defects or

mechanisms are responsible for increasing J_c in these situations and, if possible, to increase J_c even further. If this goal could be achieved, magnets and cables could be designed to take advantage of the increased J_c [5], [6]. Besides, the use of variable and force-free in applications offers other advantages, such as the decrease in the net force on the wires and therefore smaller mechanical strength requirements [5], [6].

When a current is applied perpendicular to the vortex lattice, a large enough Lorentz force causes vortices to drift and flux-flow dissipation is observed. However, if the magnetic field (\mathbf{H}) is rotated in the same plane than the current in a variable Lorentz force configuration (VLF), a decrease in the Lorentz force occurs, having $F = J \times \mathbf{H} = JH \cos(\Phi)$ and a consequent higher value of critical current, with Φ being the angle between \mathbf{H} and the c -axis, see Fig. 1. If \mathbf{H} is parallel to J ($\Phi = 90^\circ$) in the so called Force-Free (FF) configuration, dissipation is also observed but at higher values of applied current. The Force Free configuration was extensively studied in low temperature superconductors (LTS) [7]–[11]. In the FF configuration, it has been predicted that pinning as well as free surfaces play an important role in the stabilization of the VL [7], [8], also for LTS it has been observed that $J_c(\text{FF})$ increases with decreasing wire radius [7], [9]. In YBCO thin films, FF configurations can be obtained when $\mathbf{H}||ab$ with the current flowing parallel the ab -planes. With the discovery of HTS new phenomenology became important, such as the presence of high anisotropy and different types of microstructural defects that serve as pinning centers. Studies of VLF and FF configurations have been made for HTS, but mainly as a way to explore the weak links of the grain boundaries [12]–[15], the problem that dominated the performance of coated conductors (CC) until it was solved recently [16]. Granularity reduces J_c in VLF and FF configurations since it induces local meandering of the current, resulting in portions of the sample where $J \perp \mathbf{H}$ [13], [15], [17]. Despite of the work done, little or no effort has been devoted to experimentally study the effects of different pinning centers in HTS in the VLF and FF configurations.

In this work we investigate the superconducting current density vs. electric field characteristics (J-E curves) of $\text{YBa}_2\text{Cu}_3\text{O}_7$ (YBCO) thin films in the VLF and FF configurations. As we experimentally find that all the J-E curves are well described by the power-law relation $E \propto J^N$, we fully characterize them by the two parameters J_c and N . We present a comparative study of the angular dependence of J_c and N when H is rotated in maximum Lorentz force (MLF) and in variable Lorentz force configurations (see Fig. 1). We investigate a variety of samples of different pinning microstructures and thicknesses. To isolate the effects of these two parameters from those due to weak-links,

Manuscript received August 29, 2006. This work was supported by the U.S. Department of Energy.

B. Maiorov, Q. X. Jia, H. Zhou, S. R. Foltyn, and L. Civale are with the Superconductivity Technology Center, K763, Los Alamos National Laboratory, Los Alamos, NM 87545 USA (e-mail: maiorov@lanl.gov).

H. Wang is with the Superconductivity Technology Center, K763, Los Alamos National Laboratory, Los Alamos, NM 87545. He is also with Texas A&M University, College Station, Texas, USA.

A. Kursunovic is with the University of Cambridge, Cambridge, UK.

J. L. MacManus-Driscoll is with the Superconductivity Technology Center, K763, Los Alamos National Laboratory, Los Alamos, NM 87545 USA. He is also with the University of Cambridge, Cambridge, UK.

T. J. Haugan and P. N. Barnes are with the Wright-Patterson Air Force Research Laboratory, USA.

Color versions of one or more of the figures in this paper are available online at <http://ieeexplore.ieee.org>.

Digital Object Identifier 10.1109/TASC.2007.898364

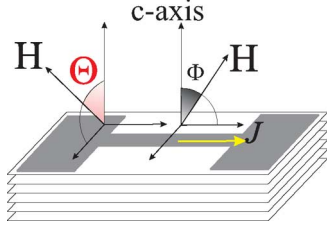


Fig. 1. Sample configuration for rotating the magnetic field (\mathbf{H}) in maximum and variable Lorentz force at angles Θ and Φ , measured from the c-axis.

TABLE I

PARAMETERS OF THE YBCO FILMS MEASURED. NAME, THICKNESS (t), GROWTH METHOD, CRITICAL CURRENT DENSITY AT SELF FIELD AND $T = 75.5$ K, (J_c^{sf}), AND $\zeta = J_c(\Theta = 90^\circ)/J_c(\Phi = 90^\circ)$ AT $\mu_0 H = 7$ T

Name	t [μm]	g. method	J_c^{sf} [MAcm^{-2}]	ζ @7T
YBCO/STO	2.9	HLPE	1.5	0.42
YBCO/STO	0.34	PLD	4.85	0.24
YBCO+211/LAO	0.30	PLD	4.5	0.19
YEuBCO/STO	0.12	PLD	5.95	0.47

we work only with films deposited on single crystal substrates by methods that are proved to produce compact weak-link free samples.

II. SAMPLE PREPARATION & EXPERIMENTAL SET-UP

We studied the following types of films grown by Pulsed Laser Deposition (PLD): YBCO on SrTiO_3 (STO) [16], [18] and LaAlO_3 (LAO) single crystal substrates, YBCO+211 grown by multiple deposition of YBCO and Y_2BaCuO_5 (211) (with the 211 layers equally spaced), on LAO [3], and $\text{Y}_{2/3}\text{Eu}_{1/3}\text{BCO}$ made from a mixture target on STO. We also studied YBCO films grown by Hybrid Liquid Phase Epitaxy (HLPE) [19] on STO. The thickness (t) of the YBCO films ranged from 0.12 to 3 μm . For space reasons we will show data only for four samples. All the samples measured have J_c at self-field (J_c^{sf}) consistent with state-of-the-art films for their thickness (see Table I) [16]. Bridges of width $w \sim 250\text{--}500$ μm were patterned by photo lithography.

Four-probe transport measurements with the films immersed in liquid N_2 ($T = 75.5$ K at Los Alamos) were performed to obtain J_c (using a 1 $\mu\text{V}/\text{cm}$ criterion) and N (from a linear regression of $\ln(E)$ vs. $\ln(J)$ in the range of 1 to 50 $\mu\text{V}/\text{cm}$). In-field J_c measurements were done as a function of \mathbf{H} strength and orientation. In the MLF configuration \mathbf{H} was applied at the plane perpendicular to the current direction ($J \perp \mathbf{H}$) with Θ being the angle between \mathbf{H} and the c-axis (see Fig. 1). In the VLF configuration \mathbf{H} was rotated in the same plane of the c-axis and the current (J) at an angle Φ , measured from the c-axis. The angular resolution was better than 0.1° .

Rotating in Φ and Θ allows to compare the same orientation of the magnetic field with respect to the c-axis, but with a continuously decreasing Lorentz force in the case of VLF, until the force-free (FF) configuration is reached for $\Phi = 90^\circ$. It is always observed that $J_c(\Theta)$ (i.e. in the MLF configuration) is equal to or smaller than $J_c(\Phi)$ (i.e. VLF). At $\Theta = \Phi = 0$ both coincide since they are the same field-current configuration. This has been observed by several groups [13], [15], [17], [20]. As a general behavior we also expect that, if the pinning $\mu_0 H = 3$ T
 $T = 75.5$ K

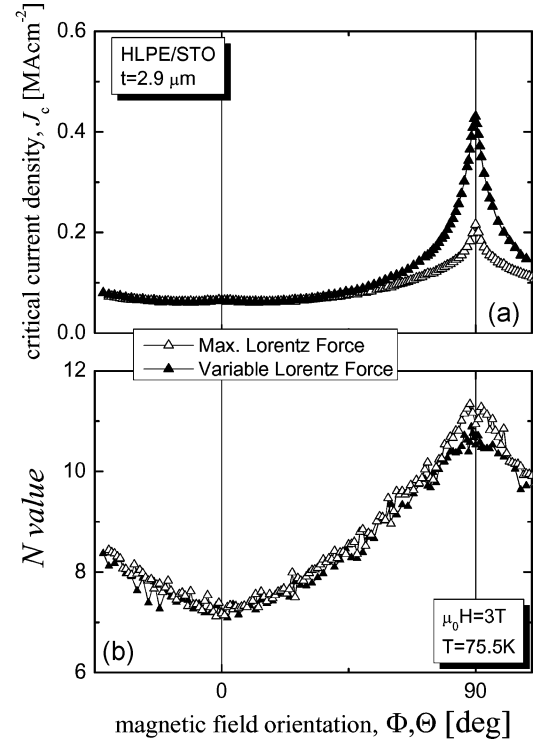


Fig. 2. (a) Critical current density J_c for a 2.9 μm HLPE sample as a function of the applied magnetic field orientation rotated in the MLF and VLF configuration (Θ and Φ respectively) at $\mu_0 H = 3$ T and $T = 75.5$ K. (b) N value as a function of Θ and Φ at the same conditions.

mechanism in the MLF and VLF is the same, then $N(\Theta)$ and $N(\Phi)$ should coincide.

III. RESULTS & ANALYSIS

We start with the thickest film, to minimize the effects coming from the surface of the sample [8]. In Fig. 2 we present $J_c(\Theta, \Phi)$ and $N(\Theta, \Phi)$ for a 2.9 μm thick HLPE film [19]. J_c is mostly coming from random defects, and only a small c-axis peak is observed, consistent with the small amount of threading dislocation found in this samples [19]. For MLF a small decrease in N is found near to the ab-plane's direction ($\Theta = 90^\circ$), indicative of intrinsic pinning and low amount of extended defects at the ab-planes. This minimum is more evident at higher fields and lower temperatures [21]. For VLF, $N(\Phi) = N(\Theta)$ for most of the angular regime, except close to the ab-planes. In the VLF case the minimum in N disappears, indicating a different type of dissipation mechanism than sliding half loops [21]. The behavior found for this HLPE film is very similar to what was observed in YBCO films of similar thickness deposited by PLD on STO, with the characteristic minimum in N at the ab-planes disappearing in the VLF configuration.

We continue by describing the angular dependence for a 0.34 μm thick YBCO/STO film grown by PLD. In Fig. 3 $J_c(\Theta, \Phi)$ and $N(\Theta, \Phi)$ are plotted in the same conditions than in Fig. 2. The increase of $J_c(\Phi)$ with respect to $J_c(\Theta)$ is greater than in the HLPE sample shown above. Also, instead of a minimum in $N(\Theta)$ close to the ab-planes, a small increase is found near $\Theta = 90^\circ$, indicative of the presence of extended defects at the ab-planes [21]. For VLF, $N(\Phi) = N(\Theta)$ for most of the angular

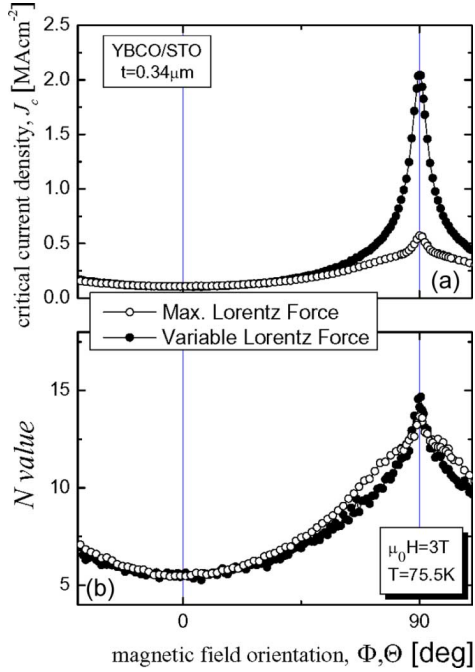


Fig. 3. (a) Critical current density J_c of a 0.34 μm PLD YBCO/STO film with H rotated in the MLF and VLF configurations at $\mu_0 H = 3\text{T}$ and $T = 75.5\text{K}$; (b) N value as a function Θ and Φ respectively.

regime, except close to the ab-planes where a more pronounced maximum is found for $N(\Phi)$. These differences between the PLD and HLPE films can be caused either by the difference in thickness, or by the fact that the PLD film has higher J_c^{sf} as well as more pinning at the ab-plane coming from extended defects. In order to sort out these possibilities, we measured a thinner sample with higher J_c^{sf} but less ab-planes pinning (the YEuBCO film) as well as a sample with the same thickness and J_c^{sf} but with even more pinning at the ab-planes than the PLD YBCO/STO film (the YBCO + 211/LAO film).

In Fig. 4 we present data for $J_c(\Theta, \Phi)$ and $N(\Theta, \Phi)$ for a 0.12 μm thick PLD $\text{Y}_{2/3}\text{Eu}_{1/3}\text{BCO/STO}$ [4]. We chose the YEu mixture because it produces films that are much smoother than the plain YBCO samples, and also show even less pinning at the ab-planes due to extended defects. Anisotropic J_c analysis performed in this sample [18] confirms that for H close to ab most of the pinning comes from random defects. For MLF a smooth behavior in N is found, with no signatures of correlated defect at the ab-plane's direction ($\Theta = 90^\circ$), another indicative of high density of random pinning from the disorder induced by the mixture. For VLF we observe $N(\Phi) = N(\Theta)$ for the entire angular regime. Also, the relative improvement of J_c is small, even smaller than in the HLPE film, as can be seen in the ratio $\zeta = J_c(\Theta = 90^\circ)/J_c(\Phi = 90^\circ)$ shown in Table I. It could be argued that the disorder introduced by the mixture is reducing the enhancement of $J_c(\Phi)$, but this film has a very high J_c , so weak links or granularity can be ruled out. This result indicates that the improvements found in $J_c(\text{VLF})$ are not dominated by thickness or high values of J_c^{sf} and leaves the different amount of extended defects at the ab planes in the various films studied as the most likely origin of the observed differences in $J_c(\text{VLF})$.

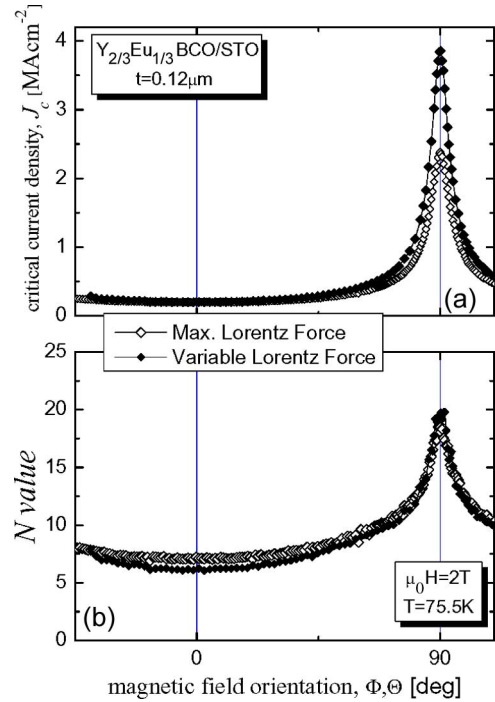


Fig. 4. (a) Critical current density J_c of a 0.12 μm PLD $\text{Y}_{2/3}\text{Eu}_{1/3}\text{BCO/STO}$ film with H rotated in the MLF and VLF configurations at $\mu_0 H = 2\text{T}$ and $T = 75.5\text{K}$. (b) N value as a function Θ and Φ .

To test our hypothesis of the influence of ab-extended pinning on $J_c(\text{VLF})$, we measured a YBCO + 211/LAO film with very similar thickness and J_c^{sf} (see Table I) but with more pinning at the ab-planes due to the equally spaced incomplete layers of 211 [3]. In Fig. 5 we show $J_c(\Theta, \Phi)$ and $N(\Theta, \Phi)$. In this sample the enhancement in $J_c(\Phi)$ is bigger than in all the other films measured with $\zeta = 0.19$. Also, a bigger peak in both $N(\Theta)$ and $N(\Phi)$ is found centered at the ab-plane's direction, indicative of higher density of extended defects at this directions and also of a clear change on the dissipation mechanism close to the ab-planes. For most of the angular range we observe the same behavior than the rest of the samples, i.e. $N(\Phi) = N(\Theta)$. This clearly confirms that the vortex dynamics in the VLF geometry is influenced by the pinning centers present in the sample, particularly, extended defects at the ab-planes.

One important point to remark is that we are not implying that granularity does not affect J_c in VLF an FF configuration. It does, but the type of pinning centers also play an important role. Thus, before inferring conclusions from the VLF about the granularity it is necessary to study the pinning properties of the films in the MLF. [14] Particularly, ζ has to be used carefully since it is not totally given by the granularity in the film as it is also governed by pinning, as can be seen in Table I where ζ ranges from 0.20 up to 0.50. Of particular interest would be to study CC grown by metal organic deposition which present a higher density of extended defects [22].

IV. CONCLUSIONS

We have studied the influence of thickness, growth method and pinning centers on the dissipation mechanism at Variable

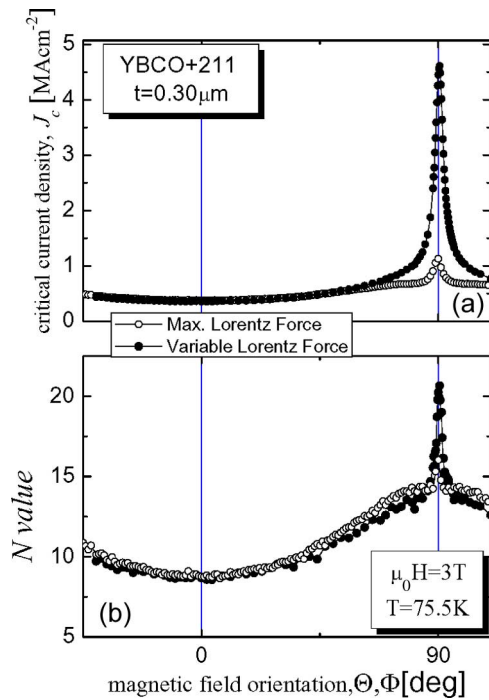


Fig. 5. (a) Critical current density J_c of a $0.30 \mu\text{m}$ PLD YBCO + 211/LAO film with H rotated in the MLF and VLF configurations at $\mu_0 H = 3\text{T}$ and $T = 75.5\text{K}$; (b) N value as a function Θ and Φ respectively.

Lorentz Force and Force Free configurations. Comparisons of experiments done at Maximum and Variable Lorentz Force show that there are two pinning regimes when the field is rotated in this configurations; one consistent with only a decrease in the applied force, indicated by the overlap of $N(\Theta)$ and $N(\Phi)$ as the field is rotated toward the ab-planes, and another very close to the ab-planes, where the dissipation characteristics change drastically, which is consistent with vortex cut and recombination [17]. We found that thickness plays a less important role than the pinning present in the films. The regime closer to the ab-planes is affected by the amount of extended correlated pinning at this direction.

ACKNOWLEDGMENT

B. M. would like to acknowledge the guidance and ideas received in the earlier part of this project from Prof. Jan Evetts.

REFERENCES

- [1] S. R. Foltyn, H. Wang, L. Civale, Q. X. Jia, P. N. Arendt, B. Maiorov, Y. Li, M. P. Maley, and J. L. MacManus-Driscoll, "Overcoming the barrier to 1000 A/cm width superconducting coatings," *Appl. Phys. Lett.*, vol. 87, p. 162505, 2005.
- [2] J. L. Macmanus-Driscoll, S. R. Foltyn, Q. X. Jia, H. Wang, A. Serquis, L. Civale, B. Maiorov, M. E. Hawley, M. P. Maley, and D. E. Peterson, "Strongly enhanced current densities in superconducting coated conductors of $\text{YBa}_2\text{Cu}_3\text{O}_{7-x} + \text{BaZrO}_3$," *Nature Materials*, vol. 3, p. 439, 2004.
- [3] T. Haugan, P. N. Barnes, R. Wheeler, F. Meisenkothen, and M. Sumpston, "Addition of nanoparticle dispersions to enhance flux pinning of the $\text{YBa}_2\text{Cu}_3\text{O}_{7-x}$ superconductor," *Nature*, vol. 430, p. 867, 2004.
- [4] J. L. MacManus-Driscoll, S. R. Foltyn, Q. X. Jia, H. Wang, A. Serquis, B. Maiorov, L. Civale, Y. Lin, M. E. Hawley, M. P. Maley, and D. E. Peterson, "Systematic enhancement of in-field critical current density with rare-earth ion size variance in superconducting rare-earth barium cuprate films," *Appl. Phys. Lett.*, vol. 84, p. 5329, 2004.
- [5] H. P. Furth, S. C. Jardin, and D. B. Montgomery, "Force-free coil principles applied to high-temperature superconducting materials," *IEEE Trans. Magnetics*, vol. 24, no. 2, pp. 1467–1468, 1987.
- [6] N. A. Salingeros, "Lorentz force and magnetic stress in force-free configurations," *Appl. Phys. Lett.*, vol. 56, no. 7, pp. 617–619, 1990.
- [7] A. M. Campbell and J. E. Evetts, "Critical currents in superconductors," *Adv. Phys.*, vol. 50, p. 1249, 2001.
- [8] E. H. Brandt, "Longitudinal critical current in type II superconductors—1. Helical vortex instability in the bulk," *Journal of Low Temperature Physics*, vol. 44, no. 1–2, pp. 33–57, 1981.
- [9] G. D. Cody, G. W. Cullen, and J. P. Mcevoy, "Field and angular dependence of critical currents in Nb_3Sn .II," *Reviews of Modern Physics*, vol. 36, no. 1, pp. 95–97, 1964.
- [10] S. T. Sekula, R. W. Boom, and C. J. Bergeron, "Longitudinal critical currents in cold-drawn superconducting alloys," *Appl. Phys. Lett.*, vol. 2, no. 5, pp. 102–104, 1963.
- [11] M. A. R. LeBlanc, D. LeBlanc, A. Golebiowski, and G. Fillion, "New observations on the dynamics of flux lines in type-II superconductors," *Phys. Rev. Lett.*, vol. 66, no. 25, pp. 3309–3312, Jun. 1991.
- [12] J. H. Durrell, M. J. Hogg, F. Kahlmann, Z. H. Barber, M. G. Blamire, and J. E. Evetts, "Critical current of $\text{YBa}_2\text{Cu}_3\text{O}_{7-\delta}$ low-angle grain boundaries," *Phys. Rev. Lett.*, vol. 90, no. 24, p. 247 006–4, 2003.
- [13] R. A. Doyle, W. A. J. Quinton, F. Baudenbacher, and W. Y. Liang, "Field dependence of superconducting properties of $\text{YBa}_2\text{Cu}_3\text{O}_{7-\delta}$ films on hastelloy substrates," *Physica C*, vol. 308, no. 3–4, pp. 169–174, 1998.
- [14] N. A. Rutter, J. H. Durrell, M. G. Blamire, J. L. MacManus-Driscoll, H. Wang, and S. R. Foltyn, "Benefits of current percolation in superconducting coated conductors," *Appl. Phys. Lett.*, vol. 87, no. 16, p. 162 507–1, 2005.
- [15] H. Safar, J. Y. Coulter, M. P. Maley, S. R. Foltyn, P. N. Arendt, X. D. Wu, and J. O. Willis, "Anisotropy and Lorentz-force dependence of the critical currents in $\text{YBa}_2\text{Cu}_3\text{O}_{7-\delta}$ delta thick films deposited on nickel-alloy substrates," *Phys. Rev. B*, vol. 52, p. R9875, 1995.
- [16] S. R. Foltyn, P. N. Arendt, Q. X. Jia, H. Wang, J. L. MacManus-Driscoll, S. Kreiskott, R. S. DePaula, L. Stan, G. R. Groves, and P. C. Dowden, "Strongly coupled critical current density values achieved in $\text{Y}_1\text{Ba}_2\text{Cu}_3\text{O}_{7-\delta}$ coated conductors with near-single-crystal texture," *Appl. Phys. Lett.*, vol. 82, p. 4519, 2003.
- [17] J. R. Clem, *Transport Currents and Force-Free Current Flow*, J. Evetts, Ed. : Pergamon Press, 1992, from "Concise Encyclopedia of magnetic and Superconducting Materials".
- [18] L. Civale, B. Maiorov, A. Serquis, J. O. Willis, J. Y. Coulter, H. Wang, Q. X. Jia, P. N. Arendt, J. L. MacManus-Driscoll, M. P. Maley, and S. R. Foltyn, "Angular dependent vortex pinning mechanisms in $\text{YBa}_2\text{Cu}_3\text{O}_7$ coated conductors and thin films," *Appl. Phys. Lett.*, vol. 84, p. 2121, 2004.
- [19] A. Kursumovic, J. E. Evetts, J. L. MacManus-Driscoll, B. Maiorov, L. Civale, H. Wang, Q. X. Jia, and S. R. Foltyn, "High critical current densities in $\text{YBa}_2\text{Cu}_3\text{O}_{7-\delta}$ films grown at high rates by hybrid liquid phase epitaxy," *Appl. Phys. Lett.*, vol. 87, p. 252507, 2005.
- [20] T. Horide, K. Matsumoto, A. Ichinose, Y. Yoshida, S. Horii, M. Mukaida, and K. Osamura, "Angular dependence of critical current density in Y-Ba-Cu-O thin films," *IEEE Trans. Applied Superconductivity*, vol. 15, no. 2, pp. 3734–3737, 2005.
- [21] L. Civale, B. Maiorov, J. L. MacManus-Driscoll, H. Wang, T. G. Holesinger, S. R. Foltyn, A. Serquis, and R. N. Arendt, "Identification of intrinsic ab-plane pinning in $\text{YBa}_2\text{Cu}_3\text{O}_7$ thin films and coated conductors," *IEEE Trans. Applied Superconductivity*, vol. 15, no. 2, pp. 2808–2811, 2005.
- [22] L. Civale, B. Maiorov, A. Serquis, S. R. Foltyn, Q. X. Jia, P. N. Arendt, H. Wang, J. O. Willis, J. Y. Coulter, T. G. Holesinger, J. L. MacManus-Driscoll, M. W. Rupich, W. Zhang, and X. Li, "Influence of crystalline texture on vortex pinning near the ab plane in $\text{YBa}_2\text{Cu}_3\text{O}_7$ thin films and coated conductors," *Physica C*, vol. 412–414, p. 976, 2004.