



**AFRL-RZ-WP-TP-2012-0138**

**LOCAL CURRENT TRANSPORT AND CURRENT  
SHARING BETWEEN FILAMENTS IN STRIATED  
COATED CONDUCTORS WITH ARTIFICIAL DEFECTS  
(POSTPRINT)**

**C. Kwon, J.L. Young, and R.G. James**

**California State University**

**George A. Levin, Timothy J. Haugan, and Paul N. Barnes**

**Mechanical Energy Conversion Branch**

**Energy/Power/Thermal Division**

**FEBRUARY 2012**

**Approved for public release; distribution unlimited.**

*See additional restrictions described on inside pages*

**STINFO COPY**

**© 2007 IEEE**

**AIR FORCE RESEARCH LABORATORY  
PROPULSION DIRECTORATE  
WRIGHT-PATTERSON AIR FORCE BASE, OH 45433-7251  
AIR FORCE MATERIEL COMMAND  
UNITED STATES AIR FORCE**

# REPORT DOCUMENTATION PAGE

*Form Approved*  
OMB No. 0704-0188

The public reporting burden for this collection of information is estimated to average 1 hour per response, including the time for reviewing instructions, searching existing data sources, gathering and maintaining the data needed, and completing and reviewing the collection of information. Send comments regarding this burden estimate or any other aspect of this collection of information, including suggestions for reducing this burden, to Department of Defense, Washington Headquarters Services, Directorate for Information Operations and Reports (0704-0188), 1215 Jefferson Davis Highway, Suite 1204, Arlington, VA 22202-4302. Respondents should be aware that notwithstanding any other provision of law, no person shall be subject to any penalty for failing to comply with a collection of information if it does not display a currently valid OMB control number. **PLEASE DO NOT RETURN YOUR FORM TO THE ABOVE ADDRESS.**

<b>1. REPORT DATE (DD-MM-YY)</b> February 2012		<b>2. REPORT TYPE</b> Journal Article Postprint		<b>3. DATES COVERED (From - To)</b> 04 April 2005 – 04 April 2007	
<b>4. TITLE AND SUBTITLE</b> LOCAL CURRENT TRANSPORT AND CURRENT SHARING BETWEEN FILAMENTS IN STRIATED COATED CONDUCTORS WITH ARTIFICIAL DEFECTS (POSTPRINT)				<b>5a. CONTRACT NUMBER</b> In-house	
				<b>5b. GRANT NUMBER</b>	
				<b>5c. PROGRAM ELEMENT NUMBER</b> 62203F	
<b>6. AUTHOR(S)</b> C. Kwon, J.L. Young, and R.G. James (California State University) George A. Levin, Timothy J. Haugan, and Paul N. Barnes (AFRL/RZPG)				<b>5d. PROJECT NUMBER</b> 3145	
				<b>5e. TASK NUMBER</b> 32	
				<b>5f. WORK UNIT NUMBER</b> 314532ZE	
<b>7. PERFORMING ORGANIZATION NAME(S) AND ADDRESS(ES)</b> California State University Department of Physics and Astronomy Long Beach, CA 90840				<b>8. PERFORMING ORGANIZATION REPORT NUMBER</b> AFRL-RZ-WP-TP-2012-0138	
<b>9. SPONSORING/MONITORING AGENCY NAME(S) AND ADDRESS(ES)</b> Air Force Research Laboratory Propulsion Directorate Wright-Patterson Air Force Base, OH 45433-7251 Air Force Materiel Command United States Air Force				<b>10. SPONSORING/MONITORING AGENCY ACRONYM(S)</b> AFRL/RZPG	
				<b>11. SPONSORING/MONITORING AGENCY REPORT NUMBER(S)</b> AFRL-RZ-WP-TP-2012-0138	
<b>12. DISTRIBUTION/AVAILABILITY STATEMENT</b> Approved for public release; distribution unlimited.					
<b>13. SUPPLEMENTARY NOTES</b> Journal article published in <i>IEEE Transactions on Applied Superconductivity</i> , Vol. 17, No. 2, June 2007. © 2007 IEEE. The U.S. Government is joint author of this work and has the right to use, modify, reproduce, release, perform, display, or disclose the work. PA Case Number: AFRL/WS 07-0742; Clearance Date: 04 Apr 2007. Work on this effort was completed in 2007. This paper has color content.					
<b>14. ABSTRACT</b> Multifilamentary YBCO coated conductor with fishnet striation pattern is investigated by transport measurements and scanning laser microscopy (SLM). Each filament is clearly visible in SLM images, and higher current flows along the edges of filaments. After initial measurements, an incision is made to disable two filaments and to investigate the changes in the current transport, the current sharing, and the dissipation patterns. Current sharing and redistribution are clearly observed among the filaments and at the weak links. We find that the dissipation is mainly caused by local current crowding. Since the current is to be shared among intact filaments, the most impacted area is the filaments closer to the disabled ones which have to carry higher current. The other susceptible area is the weak links where the current redistributes and the increased current density is expected.					
<b>15. SUBJECT TERMS</b> multifilamentary, coated conductor, striation, filaments, current density, transport, images, measurements, weak links					
<b>16. SECURITY CLASSIFICATION OF:</b>			<b>17. LIMITATION OF ABSTRACT:</b> SAR	<b>18. NUMBER OF PAGES</b> 10	<b>19a. NAME OF RESPONSIBLE PERSON (Monitor)</b> Timothy J. Haugan <b>19b. TELEPHONE NUMBER (Include Area Code)</b> N/A
<b>a. REPORT</b> Unclassified	<b>b. ABSTRACT</b> Unclassified	<b>c. THIS PAGE</b> Unclassified			

# Local Current Transport and Current Sharing Between Filaments in Striated Coated Conductors With Artificial Defects

C. Kwon, J. L. Young, R. G. James, George A. Levin, Timothy J. Haugan, and Paul N. Barnes

**Abstract**—Multifilamentary YBCO coated conductor with fishnet striation pattern is investigated by transport measurements and scanning laser microscopy (SLM). Each filament is clearly visible in SLM images, and higher current flows along the edges of filaments. After initial measurements, an incision is made to disable two filaments and to investigate the changes in the current transport, the current sharing, and the dissipation patterns. Current sharing and redistribution are clearly observed among the filaments and at the weak links. We find that the dissipation is mainly caused by local current crowding. Since the current is to be shared among intact filaments, the most impacted area is the filaments closer to the disabled ones which have to carry higher current. The other susceptible area is the weak links where the current redistributes and the increased current density is expected.

**Index Terms**—Dissipation pattern, filamentary coated conductor, scanning laser microscopy.

## I. INTRODUCTION

THE second generation high temperature superconducting wire based on YBCO can currently satisfy some of performance requirements for high power applications. However, the large geometric aspect ratio in coated conductor (CC) design causes large hysteretic loss in ac and poses a major problem in the applications which require operating in ac field such as generators. Several design ideas have been proposed in order to reduce ac loss [1]–[3]. Carr and Oberly have divided the YBCO coated conductor cables into long filamentary strips with a little twist to reduce ac loss [1]. Cobb *et al.* used laser ablation to create striated epitaxial YBCO film and demonstrated the decrease in ac loss [4]. However, without the means to redistribute current in such geometry, a single defect can cause a catastrophic failure of the whole wire. In order to provide current sharing, it is proposed that striations are interrupted to provide weak links between filaments [5].

It has been shown that the multi-filamentary samples with inter-filament bridging as weak links have lower ac losses than unstriated samples, even though the loss is higher than the fully

striated samples [6]–[9]. The weak links generally increase ac loss, and the degree of increase depends on the placement and physical property of weak-links. Hence, the design optimization of the geometry and properties of weak-links is needed for the practical use of filamentary CC wires. The first design requirement is the reduction of ac loss. Another is to optimize for current redistribution if current blockage occurs in a filament. Since reducing ac loss and increasing current sharing are conflicting requirements, the final design will need a compromise. In addition, feasibility, cost, stability, and quench protection have to be considered for the final design.

We have demonstrated that the local maps of transport current and superconducting dissipation can be obtained using SLM [10]. In this work, our objectives are to study how current sharing and redistribution occur in multi-filamentary CCs. In order to do that, we have created an incision to disable filaments in a sample and studied how local current transport and dissipation patterns are modified.

In this paper, a fishnet patterned multi-filamentary CC sample is studied. The sample is characterized with transport and SLM techniques in the original state. Afterward, an incision is made to cut two filaments and the sample is characterized again. The redistribution of current at the weak links is clearly observed. After the cut, the filaments neighboring the disabled ones are carrying higher current and show the dissipation first. The increased current density at the weak links also makes them susceptible for the early dissipation. We conclude that the current crowding is the main factor limiting the current carrying capability of this sample.

## II. EXPERIMENT

Striations in multiply connected CCs are made by laser micromachining to create long filaments with weak links. The different patterns are named after the placement of weak links [9]. In this paper, we have studied a fishnet pattern sample.

After receiving the sample, the top silver layer is etched to expose YBCO and the sample is prepared for four-probe transport measurements by depositing gold contacts. Extra care was taken to ensure good gold coverage over each striation in the sample to establish uniform contact resistance among the strips. The bias current was applied along the direction of the striations. Detailed information about SLM and our setup can be found in the earlier publications [10], [11].

The sample is measured using conventional transport and SLM techniques. Two modes of SLM were used for this sample; variable temperature scanning laser microscopy (VTSLM) and

Manuscript received August 28, 2006. This work was supported by the AFOSR Grant FA9550-05-1-0037 and the NSF-MRI Grant DBI-0421441.

C. Kwon, J. L. Young, and R. G. James are with the Department of Physics and Astronomy, California State University, Long Beach, CA 90840 USA (e-mail: ckwon@csulb.edu; jyoung4@csulb.edu; rjames@csulb.edu).

G. A. Levin, T. J. Haugan, and P. N. Barnes are with the Air Force Research Laboratory, WPAFB, OH 45433-7919 USA (e-mail: george.levin@wpafb.af.mil; timothy.haugan@wpafb.af.mil; paul.barnes@wpafb.af.mil).

Color versions of one or more of the figures in this paper are available online at <http://ieeexplore.ieee.org>.

Digital Object Identifier 10.1109/TASC.2007.897914

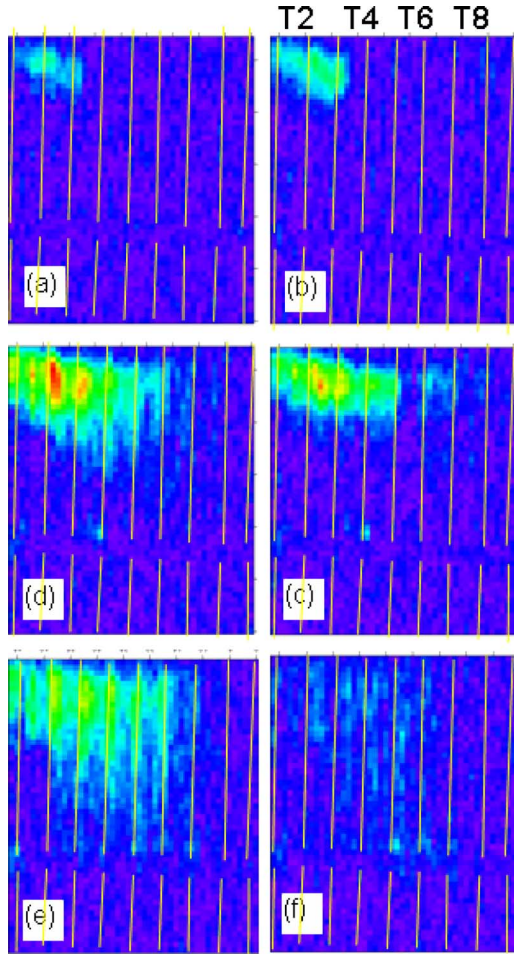


Fig. 1. A series of VTSLM taken from the original sample using  $I_B = 70$  mA at (a) 90.2 K, (b) 90.3 K, (c) 90.4 K, (d) 90.6 K, (e) 90.8 K, and (f) 91.0 K. The fishnet pattern is overlaid on the images. The width of each filament is 0.5 mm and the weak link openings are 0.3 mm.

low temperature scanning laser microscopy (LTSLM) [12]. In VTSLM mode, a fixed current is applied ( $I_B$ ) and SLM image is taken by varying temperatures near the superconducting transition. In LTSLM mode, the sample temperature is fixed at  $T < T_c$  and SLM image is taken while the bias current is increased above  $I_c$ .

After the initial measurements, an incision is made to cut two filaments off to disable them using a LaserScissors Pro 300 Workstation mounted in Olympus microscope. The sample is characterized again to study how disabled filaments modify current transport and dissipation patterns.

### III. RESULTS AND DISCUSSION

Fig. 1 is a series of VTSLM images taken from the fishnet striated sample.

The striation pattern taken from a photodiode image is overlaid on some images as a guide to the eyes. There are nine filaments at the top and the bottom. The top and bottom filaments are connected directly through openings placed around 2/3 way down to provide superconducting weak links.

Most of the features are concentrated at the top filaments. As we reported earlier, the signal intensity ( $\delta V$ ) of VTSLM images is proportional to  $(dR/dT)$  and the local current density ( $J_B$ )

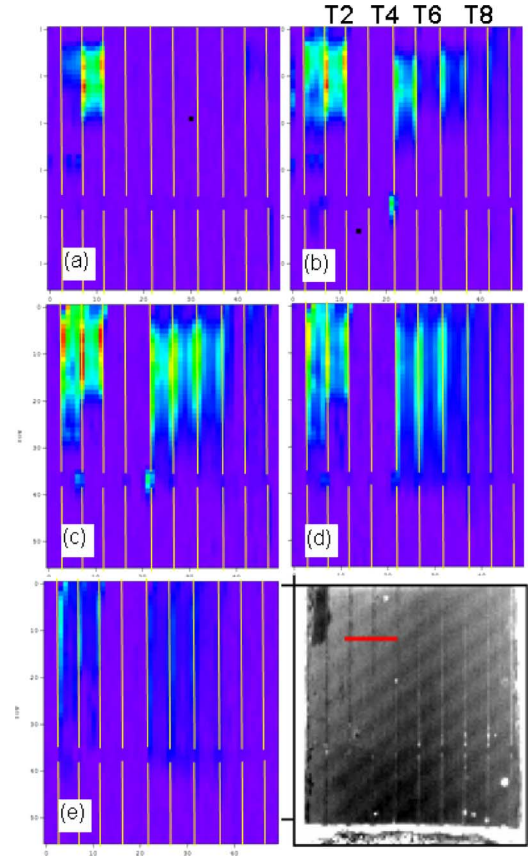


Fig. 2. A series of VTSLM images taken after two filaments are cut. The images are taken at (a) 88.8 K, (b) 89.0 K, (c) 89.2 K, (d) 89.4 K, and (e) 89.6 K using  $I_B = 100$  mA. The last figure is the photodiode image taken at the same time. A line is drawn to emphasize the position of the incision.

[10], [11]. Hence,  $\Delta V$  is the highest at the temperature ( $T_c^*$ ) when the resistance drop ( $dR/dT$ ) is the largest and decreases rapidly around that temperature.

There is a slight variation of  $T_c^*$  in the sample as seen from Fig. 1. Most visible areas have  $T_c^*$  of 90.6 K. The center of the image including the weak links, T3, T4, T5, and T6 has  $T_c^*$  at 90.8 K. T7 has two  $T_c^*$ s at 90.4 K (the center) and 90.8 K (the top). We believe the small variation  $T_c^*$  does not have affect the overall current flow trend since no direct evidence is observed.

Even though it is not shown, LTSLM images taken at 0.5 K below  $T_c$  using higher current ( $I_B = 190$  mA) is similar to Fig. 1(a).

Since I-V starts to deviate from a linear behavior below 90.6 K, the sample is considered to be in the critical state. Hence, it is expected to see the similarity between the dissipation map taken using LTSLM and VTSLM images taken when I-V is non-linear.

One more noticeable feature in VTSLM images is the appearance of stronger  $\Delta V$  along the striations. It is more distinct in Fig. 2. Fig. 2 is a series of VTSLM images taken after an incision was made to sever two filaments (T3 and T4). Each striation is clearly visible; hence there is no need for the overlaid pattern. The stronger  $\Delta V$  at the edges of a filament than in the middle is why the striations have distinct appearance. Earlier we have discussed slight variation of  $T_c^*$  along some filaments, but not across the width of filaments. We can presume that  $\Delta V$

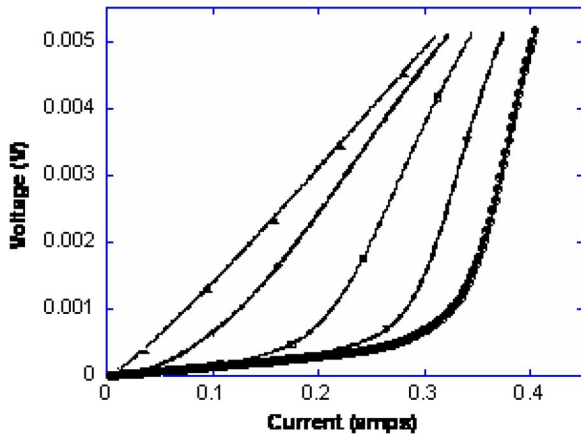


Fig. 3. I-V characteristics measured at  $T = 89.8$  K,  $89.4$  K,  $89.0$  K,  $88.6$  K, and  $88.2$  K.

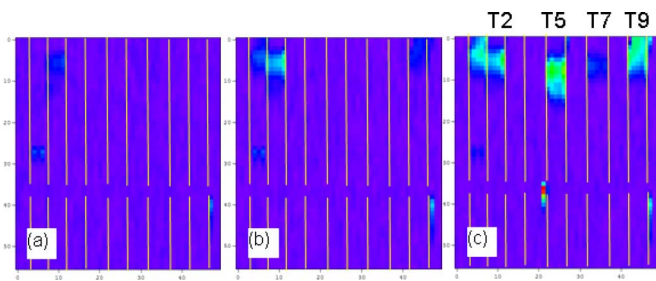


Fig. 4. LTSLM images measured at  $88.2$  K using  $I_B$  of (a)  $220$  mA, (b)  $260$  mA, and (c)  $280$  mA.

across the width of the filaments is related to the current density. Hence, we can conclude that higher current flows at the edges than the middle of filaments.

Fig. 3 is I-V characteristics measured between  $89.9$  K and  $88.2$  K. It clearly shows non-linear behavior below  $89.4$  K, even though there is a measurable voltage across the sample at  $I_B = 100$  mA. It confirms that some VTSLM images are taken in the mixed states.

A theoretical analysis of the critical state behavior in type-II superconducting thin films has shown that the entire width of the film carries current while higher current density flows along the edges [13]. That explains the higher current density along the edges than the middle of a filament is originated from the critical state behavior. The combination of high  $\Delta V$  along the striation and low  $\Delta V$  inside makes each striation a landmark in SLM images and helps us to locate and identify other features.

Fig. 4 is a series of LTSLM images taken at  $88.2$  K. As we discussed earlier, LTSLM images showing the dissipation pattern are similar to VTSLM images taken at lower temperatures. This is somewhat expected because LTSLM images are taken near  $T_c$  and VTSLM images are taken in mixed states. The important question is whether the dissipation map will change far below  $T_c$ . Since SLM technique forces the sample to be near the critical state (by applying current close to  $I_c$  or doing the measurement near  $T_c$ ), it is not clear whether the major change of dissipation pattern will occur at lower temperatures. A new mode of SLM is under development to enable LTSLM measurements at the lower temperatures, which will help answering the question.

SLM images are clearly different before and after the cut. The first thing to notice is the absence of  $\Delta V$  signal in the two cut off filaments (T3 and T4). It seems that T3 and T4 do not carry current after the cut. T3 and T4 are visible in Fig. 1 confirming current flows in them before the incision is made. After the cut, there is not only no measurable  $\Delta V$  in T3 and T4 but also significantly increased  $\Delta V$  in the neighboring filaments (T2 and T5). As discussed earlier, the magnitude of  $\Delta V$  is proportional to the current density when  $T_c$  is uniform. Hence, we can conclude that the cut off filaments (T3 and T4) do not carry current, and the nearest neighbor filaments (T2 and T5) have a burden of carrying higher current. It is substantiated by Fig. 4(c) where T2 and T5 dissipate early because of the increased current density.

Even in the original sample,  $\Delta V$  is visible around the weak links [Fig. 1(e)] indicating that they are providing channels for current to redistribute as intended. After the cut, the signal  $\Delta V$  is stronger at the weak links near the cut-off filaments [Fig. 3(c)] supporting the current redistribution at the weak links. Unintended consequence is that the increased current density creates current crowding at the weak links making them susceptible for early dissipation as shown in Fig. 4(c).

An earlier paper by Abraimov *et al.* [14] shows that the strong dissipation is observed where the cross sectional area of current transport is reduced and the local current density is high in an epitaxial YBCO film on SrTiO<sub>3</sub> substrate. In the fishnet pattern striated CC sample studied, we also find that the increased local current density is the most important factor in the dissipation. The current crowding can occur in the neighborhood of the disabled filaments and the weak links where current redistributes.

One more thing to note in this sample is the lack of visible features at the bottom filaments. After reviewing all images, we conclude that one of the top filaments (T8) does not carry current. No visible signal is observed from T8 in the original sample. Even after two filaments are cut and current density is increased in other top filaments, T8 is still not visible in Figs. 2 and 4. Since T8 does not carry current, current density is higher in the top filaments than the bottom ones from the beginning. This provides a plausible explanation why the features are concentrated at the top filaments.

Lastly, Fig. 4 shows a strong dissipation in multiple filaments around the cut (T1, T2, and T5), but the intensity of  $\delta V$  decreases rapidly even before it reaches the weak links. We believe this is due to the current leakage to the neighboring filaments and the substrate via melted and splashed Hastelloy during the ablation process. Levin *et al.* [9] reported the existence of Hastelloy splash created during the laser micromaching which can provide an electric connection among silver overlayer, YBCO, and substrate. They indicate the higher than expected ac loss is due to the current flowing through the Hastelloy splash in the multifilament striated samples with weak links.

The premature disappearance of  $\delta V$  is also observed in Fig. 2, even though  $\delta V$  is visible in larger areas than Fig. 4. The difference between Figs. 2 and 4 can be explained with the conductivity of filaments; i.e. the neighboring filaments have higher conductivity in superconducting state than in the transition region, hence the current leaks easily to the neighboring filaments resulting in the reduced current crowding area. Our results may indicate the possibility of current leakage via Hastelloy splash in dc transport.

#### IV. CONCLUSIONS

A multi-filamentary YBCO coated conductor with a fishnet patterned striation is studied by scanning laser microscopy (SLM). VTSLM images show that the striations restrict current within the filaments. As intended, the weak links act as a place to redistribute the current among filaments. In the superconducting state, the main dissipation in the sample occurs at the filaments neighboring the cut-off ones and at the weak links instigated by the current crowding. Our study shows the importance of optimizing striation patterns for current sharing and redistribution as well as ac loss.

#### REFERENCES

- [1] W. J. Carr and C. E. Oberly, "Filamentary YBCO conductors for AC applications," *IEEE Trans. Appl. Supercond.*, vol. 9, pp. 1475–1478, Jun. 1999.
- [2] S. P. Ashworth and F. Grilli, "A strategy for the reduction of ac losses in YBCO coated conductors," *Superconductor Science & Technology*, vol. 19, pp. 227–232, 2006.
- [3] P. N. Barnes and M. D. Sumption, "Low loss striated YBa<sub>2</sub>Cu<sub>3</sub>O<sub>7-d</sub> coated conductor with filamentary current sharing," *J. Appl. Phys.*, vol. 96, pp. 6550–6556, Dec. 1, 2004.
- [4] C. B. Cobb, P. N. Barnes, T. J. Haugan, J. Tolliver, E. Lee, M. Sumption, E. Collings, and C. E. Oberly, "Hysteretic loss reduction in striated YBCO," *Physica C-Superconductivity and its Applications*, vol. 382, pp. 52–56, Oct. 15, 2002.
- [5] G. A. Levin and P. N. Barnes, "Concept of multiply connected superconducting tapes," *IEEE Trans. Appl. Supercond.*, vol. 15, pp. 2158–2161, Jun. 2005.
- [6] N. Amemiya, S. Kasai, K. Yoda, Z. N. Jiang, G. A. Levin, P. N. Barnes, and C. E. Oberly, "AC loss reduction of YBCO coated conductors by multifilamentary structure," *Supercond Sci Technol*, vol. 17, pp. 1464–1471, Dec. 2004.
- [7] G. A. Levin, P. N. Barnes, N. Amemiya, S. Kasai, K. Yoda, and Z. Jiang, "Magnetization losses in multifilament coated superconductors," *Appl. Phys. Lett.*, vol. 86, p. 072509, Feb. 14, 2005.
- [8] P. N. Barnes, G. A. Levin, C. Varanasi, and M. D. Sumption, "Low AC loss structures in YBCO coated conductors with filamentary current sharing," *IEEE Trans. Appl. Supercond.*, vol. 15, pp. 2827–2830, Jun. 2005.
- [9] G. A. Levin, P. N. Barnes, N. Amemiya, S. Kasai, K. Yoda, Z. A. Jiang, and A. Polyanskii, "Magnetization losses in multiply connected YBa<sub>2</sub>Cu<sub>3</sub>O<sub>6+x</sub> coated conductors," *J. Appl. Phys.*, vol. 98, p. 113909, Dec. 1, 2005.
- [10] L. B. Wang, M. B. Price, J. L. Young, C. Kwon, T. J. Haugan, and P. N. Barnes, "Observation of nonuniform current transport in epitaxial YBa<sub>2</sub>Cu<sub>3</sub>O<sub>7-x</sub> film near the superconducting transition temperature," *Physica C*, vol. 405, pp. 240–244, Jun. 15, 2004.
- [11] L. B. Wang, P. Selby, C. Khanal, G. Levin, T. J. Haugan, P. N. Barnes, and C. Kwon, "The distribution of transport current in YBCO coated conductor with zipper striations," *IEEE Trans. Appl. Supercond.*, vol. 15, pp. 2950–2953, Jun. 2005.
- [12] A. P. Zhuravel, A. G. Sivakov, O. G. Turutanov, A. N. Omelyanchouk, S. M. Anlage, A. Lukashenko, A. V. Ustinov, and D. Abraimov, "Laser scanning microscopy of HTS films and devices (Review Article)," *Low Temp. Phys.*, vol. 32, pp. 592–607, June 2006, 2006.
- [13] E. Zeldov, J. R. Clem, M. Mcelfresh, and M. Darwin, "Magnetization and transport currents in thin superconducting films," *Physical Review B*, vol. 49, pp. 9802–9822, Apr. 1, 1994.
- [14] D. V. Abraimov, D. M. Feldmann, A. A. Polyanskii, A. Gurevich, S. Liao, G. Daniels, D. C. Larbalestier, A. P. Zhuravel, and A. V. Ustinov, "Imaging local dissipation and magnetic field in YBCO films with artificial defects," *IEEE Trans. Appl. Supercond.*, vol. 15, pp. 2954–2957, 2005.