



**DoD Executive Agent**

Office of the  
Assistant Secretary  
of the Army for  
Installations, Energy  
and Environment

# TARDEC Occupant Protection Seat

**Katrina Harris / Joseph  
Melotik, TARDEC**

**28 August 2012**

The NDCEE is operated by  *Concurrent  
Technologies  
Corporation*

# Report Documentation Page

Form Approved  
OMB No. 0704-0188

Public reporting burden for the collection of information is estimated to average 1 hour per response, including the time for reviewing instructions, searching existing data sources, gathering and maintaining the data needed, and completing and reviewing the collection of information. Send comments regarding this burden estimate or any other aspect of this collection of information, including suggestions for reducing this burden, to Washington Headquarters Services, Directorate for Information Operations and Reports, 1215 Jefferson Davis Highway, Suite 1204, Arlington VA 22202-4302. Respondents should be aware that notwithstanding any other provision of law, no person shall be subject to a penalty for failing to comply with a collection of information if it does not display a currently valid OMB control number.

1. REPORT DATE <b>30 JUL 2012</b>		2. REPORT TYPE <b>Briefing Charts</b>		3. DATES COVERED <b>30-07-2012 to 30-07-2012</b>	
4. TITLE AND SUBTITLE <b>TARDEC Occupant Protection Seat</b>				5a. CONTRACT NUMBER	
				5b. GRANT NUMBER	
				5c. PROGRAM ELEMENT NUMBER	
6. AUTHOR(S) <b>Katrina Harris; Joseph Melotik</b>				5d. PROJECT NUMBER	
				5e. TASK NUMBER	
				5f. WORK UNIT NUMBER	
7. PERFORMING ORGANIZATION NAME(S) AND ADDRESS(ES) <b>U.S. Army TARDEC ,6501 E.11 Mile Rd,Warren,MI,48397-5000</b>				8. PERFORMING ORGANIZATION REPORT NUMBER <b>#23159</b>	
9. SPONSORING/MONITORING AGENCY NAME(S) AND ADDRESS(ES) <b>U.S. Army TARDEC, 6501 E.11 Mile Rd, Warren, MI, 48397-5000</b>				10. SPONSOR/MONITOR'S ACRONYM(S) <b>TARDEC</b>	
				11. SPONSOR/MONITOR'S REPORT NUMBER(S) <b>#23159</b>	
12. DISTRIBUTION/AVAILABILITY STATEMENT <b>Approved for public release; distribution unlimited</b>					
13. SUPPLEMENTARY NOTES <b>Submitted to national Defence Center for Energy and Environment</b>					
14. ABSTRACT <b>N/A</b>					
15. SUBJECT TERMS					
16. SECURITY CLASSIFICATION OF:			17. LIMITATION OF ABSTRACT <b>Same as Report (SAR)</b>	18. NUMBER OF PAGES <b>22</b>	19a. NAME OF RESPONSIBLE PERSON
a. REPORT <b>unclassified</b>	b. ABSTRACT <b>unclassified</b>	c. THIS PAGE <b>unclassified</b>			

# Notice



- Disclaimer: Reference herein to any specific commercial company, product, process, or service by trade name, trademark, manufacturer, or otherwise, does not necessarily constitute or imply its endorsement, recommendation, or favoring by the United States Government or the Department of the Army (DoA). The opinions of the authors expressed herein do not necessarily state or reflect the United States Government or the DoA, and shall not be used for advertising or product endorsement purposes.

# Presentation Overview



- Objective
- Program Overview
- Seat Design Overview
- Subscale Energy Attenuation (EA) Testing
- Phase II Design Updates
- Seat Fabrication Progress
- Remaining Work

# Objective



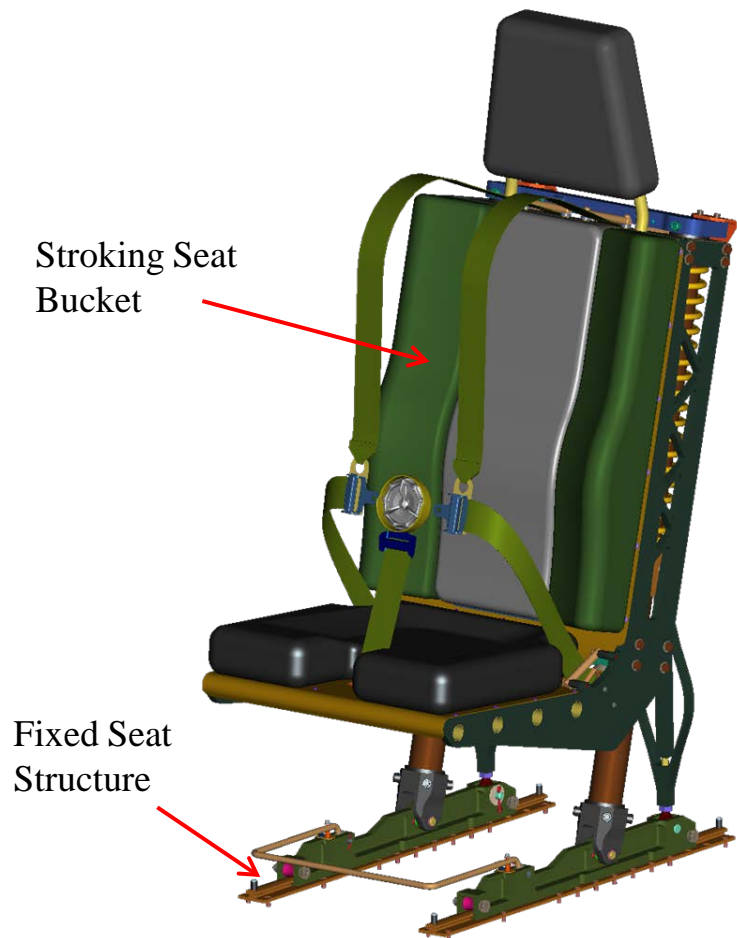
- To develop an innovative, robust blast mitigating seat design that maximizes occupant safety during blast, slamdown and crash events.
  - The NDCEE blast mitigation seat design utilizes a robust wire bender Energy Attenuation (EA) system with a reset mechanism that protects the occupant during both the upward blast acceleration and slam down deceleration events.

# Program Overview

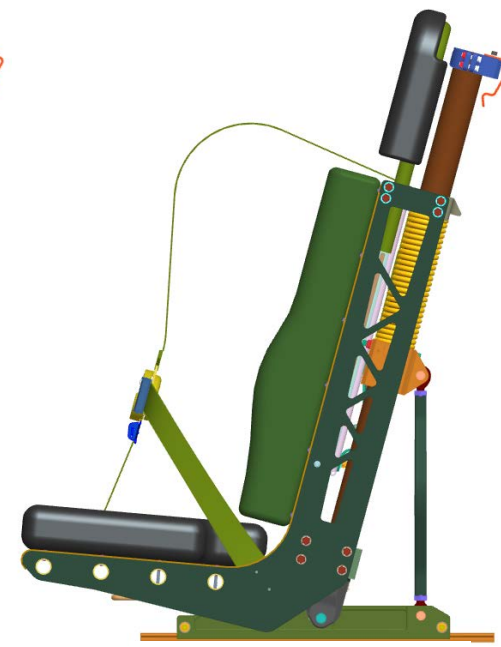


- Phase 1 (November 2010 - December 2011)
  - Develop requirements
  - Develop EA system design / finite element analysis (FEA)
  - Design / build / test a subscale EA test fixture to verify EA performance and correlate with FEA models
  - Complete seat design to CDR level (CDR held 22 Dec 2011)
- Phase 2 (November 2011 - Present)
  - Update seat design to optimize performance based on test results
  - Fabricate four (4) prototype seats for testing
  - Perform drop tower testing to evaluate seat performance
  - Perform blast testing to evaluate seat performance

# Design Overview



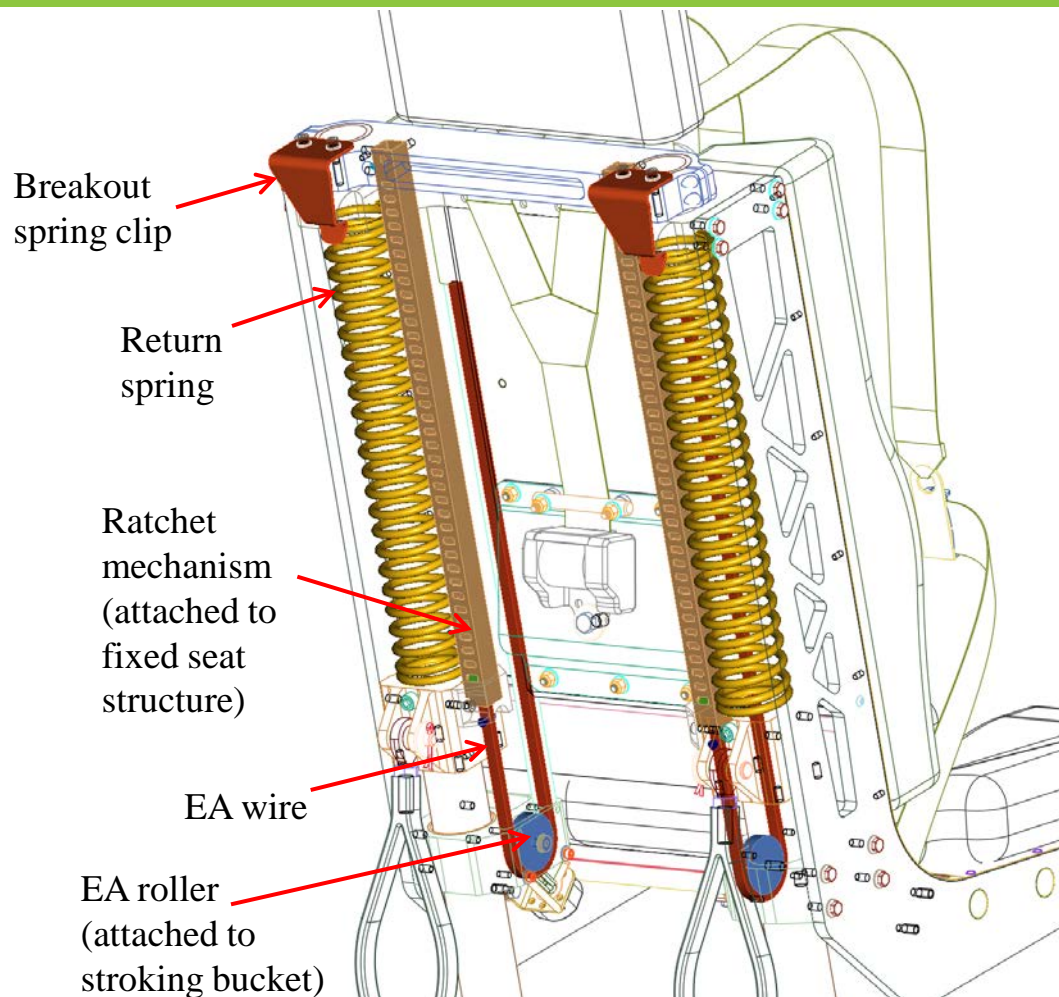
Nominal position



Stroked 8 inches



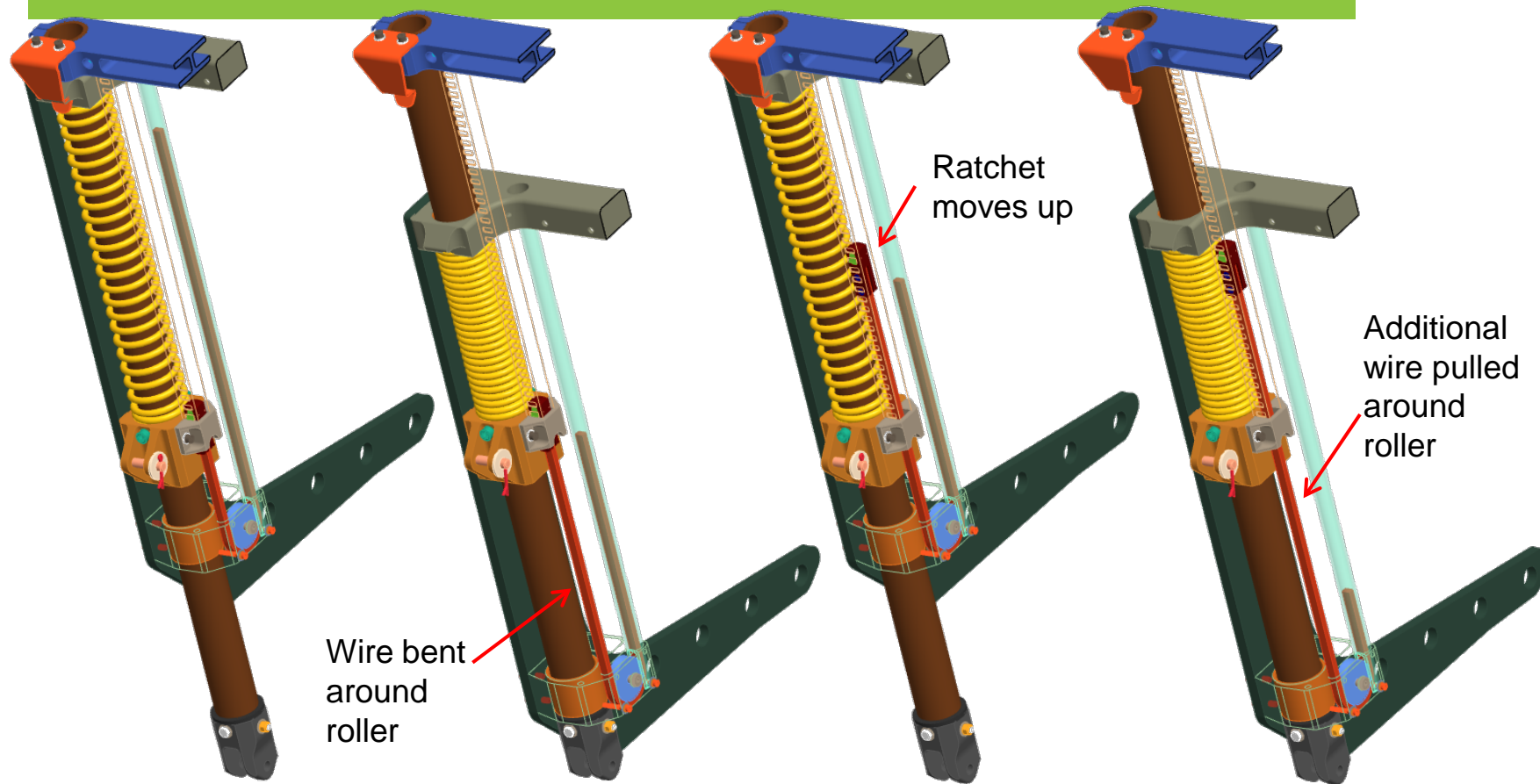
# Design Overview – EA System



UNCLASSIFIED



# Design Overview – EA System



Nominal position

Initial blast  
(stroked 8 inches)

Rebound

Slamdown

Wire bent  
around  
roller

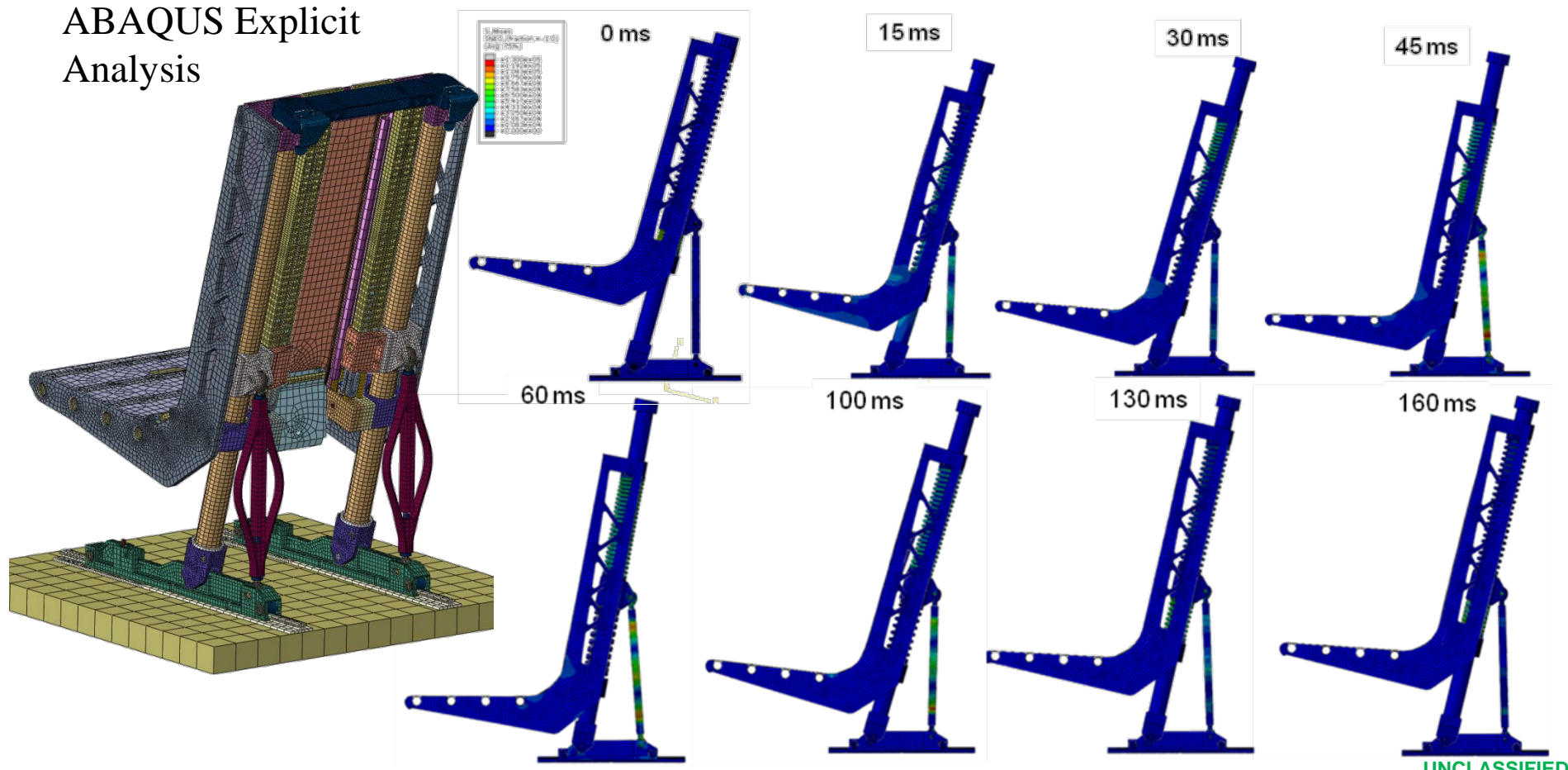
Ratchet  
moves up

Additional  
wire pulled  
around  
roller



# EA System FEA

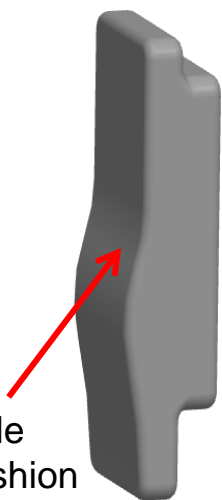
## ABAQUS Explicit Analysis



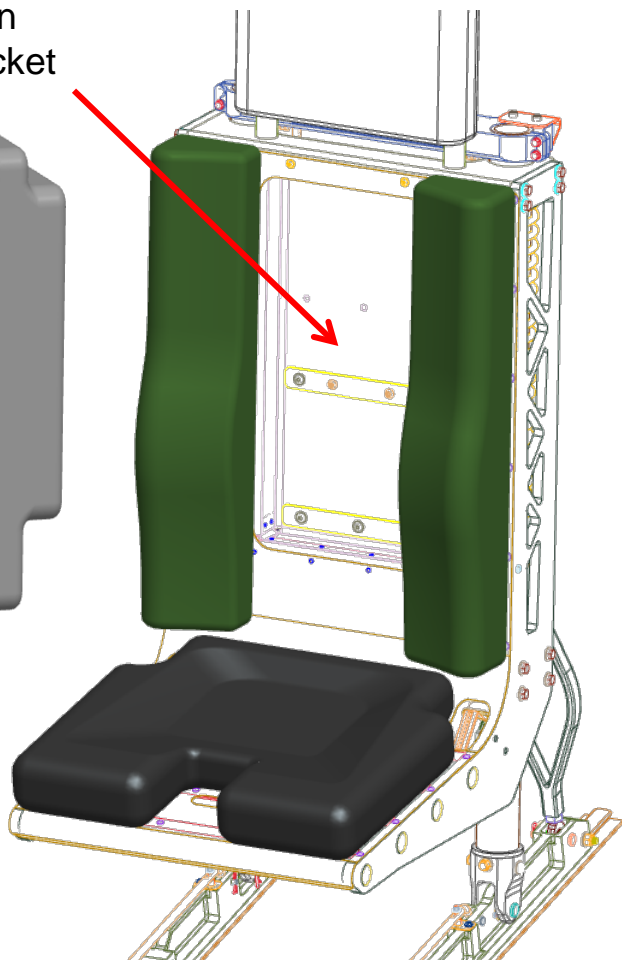
# Design Overview – Cushions / Harness



Hydration  
pack pocket



Removable  
center cushion

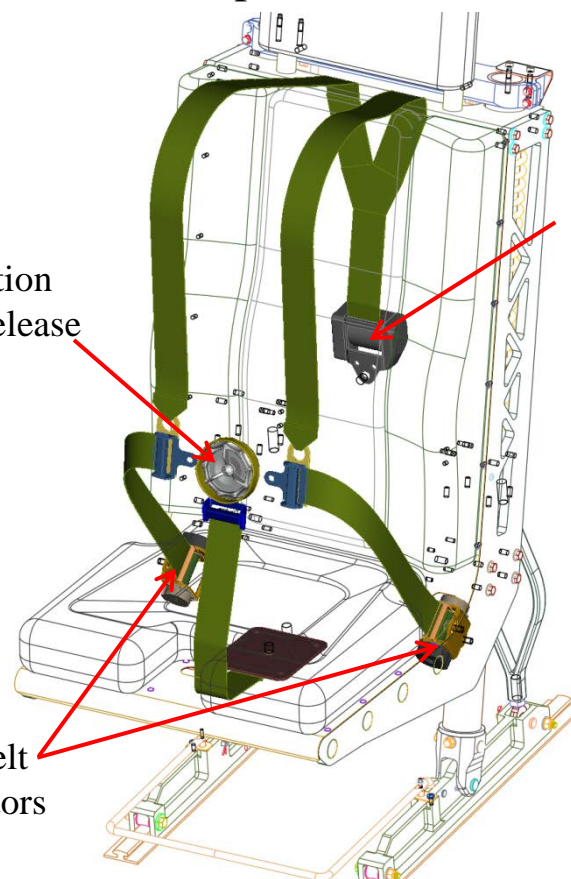


5-point harness

Single action  
harness release

Shoulder  
harness  
retractor

Lap belt  
retractors

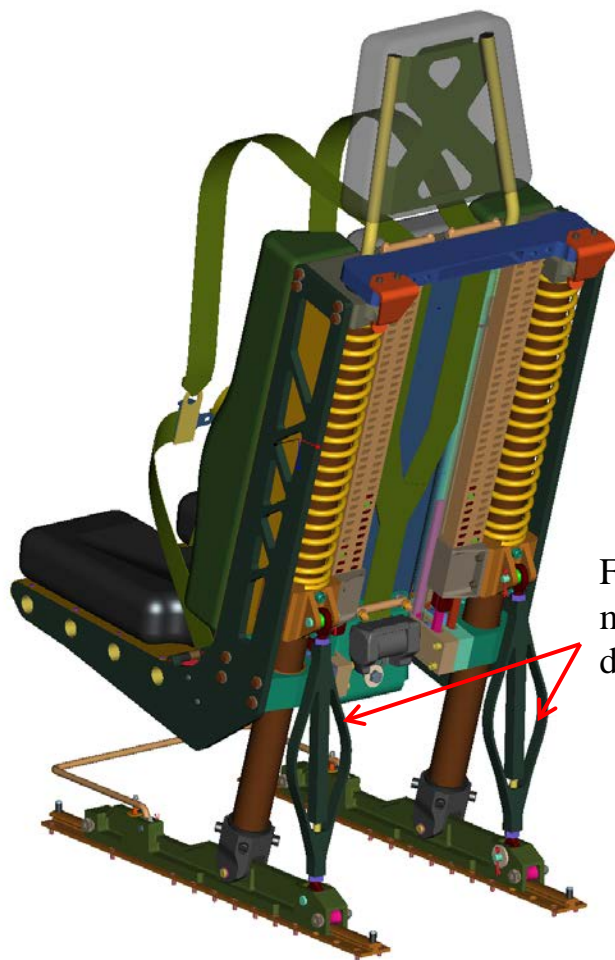


UNCLASSIFIED

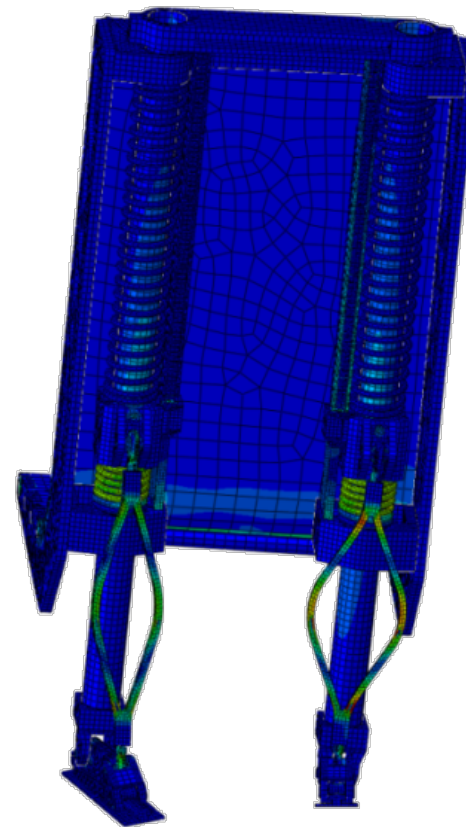
# Design Overview – Floor Deformation



Seat is designed to function nominally with up to  $\pm 10^\circ$  rotation of one mounting foot relative to the other in any direction.



Flexible links to mitigate floor deformations



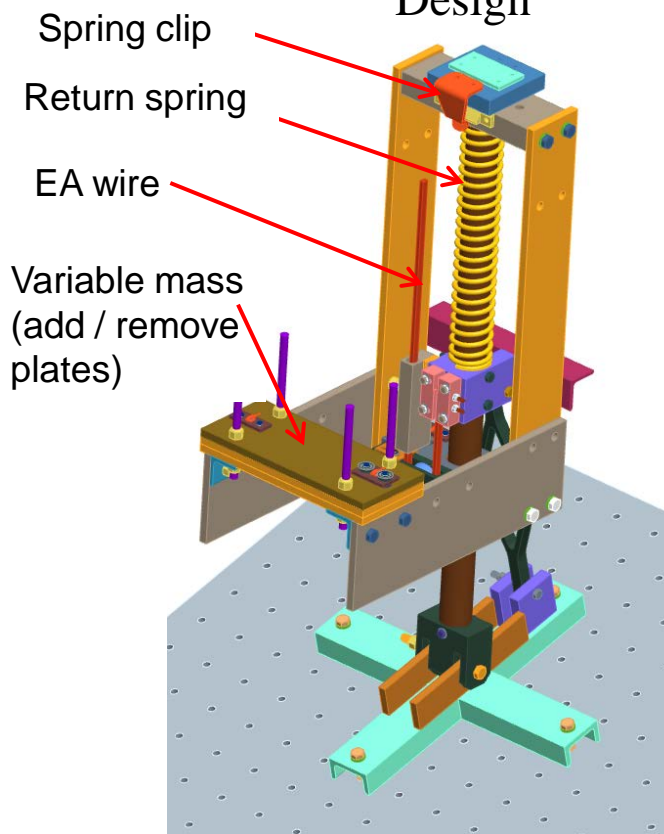
UNCLASSIFIED



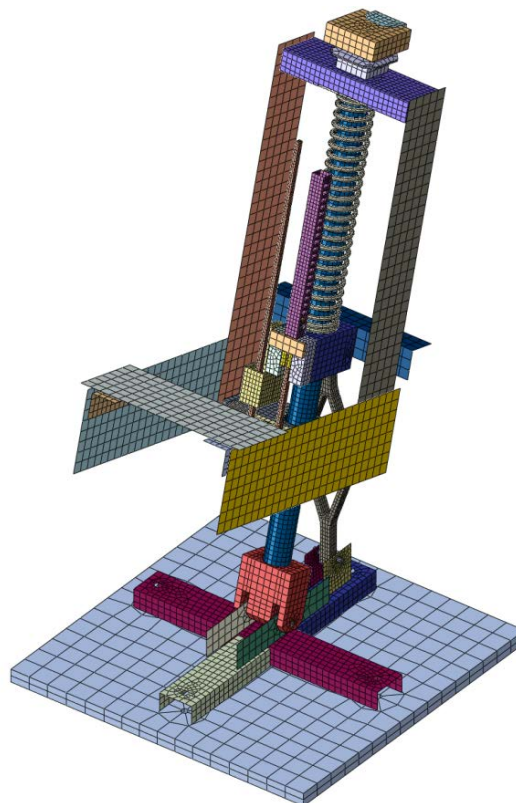
# Subscale EA Test Fixture

Purpose: To test all critical energy attenuation components on the TARDEC drop tower without incurring the cost of building a complete seat.

Design



Analyze



Test



UNCLASSIFIED

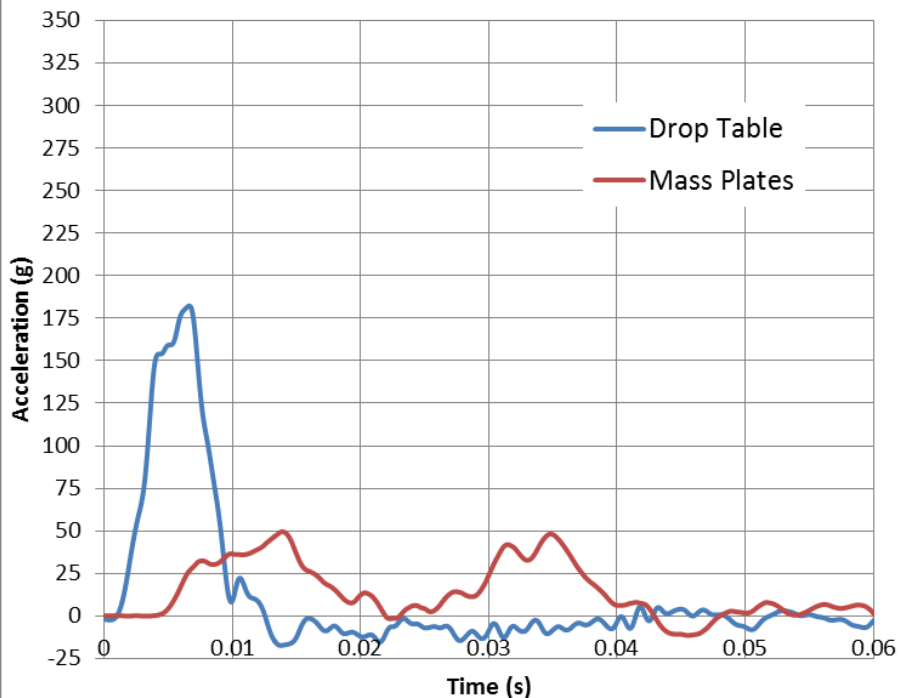


# Subscale EA Test Fixture Results

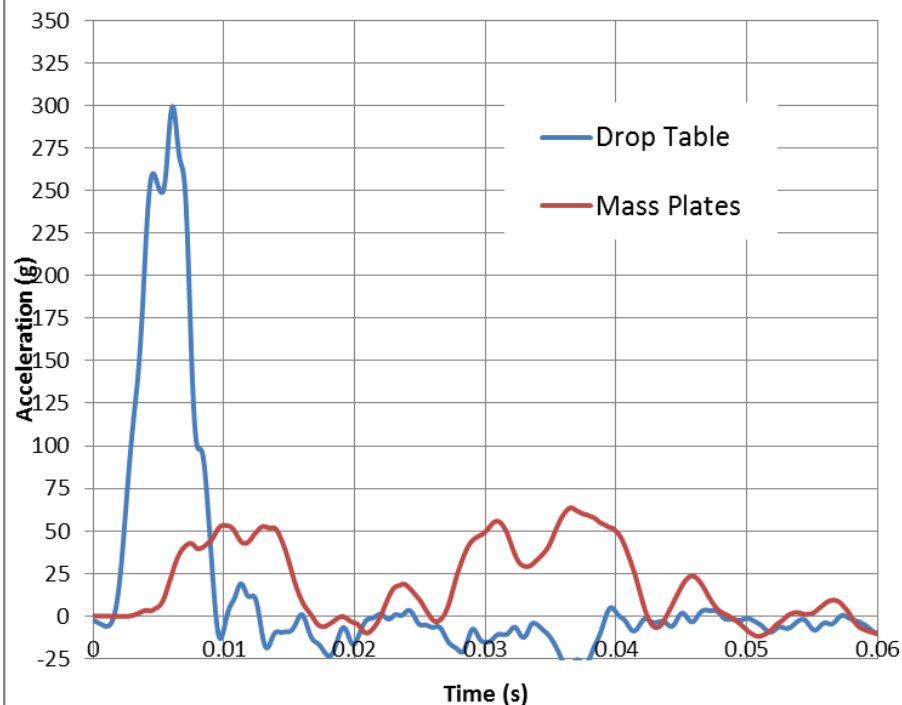
7 mass plates (represents 276 lb occupant),  
182.3g input pulse  
49.6g max on mass plates

7 mass plates (represents 276 lb occupant),  
299.5g input pulse  
63.6g max on mass plates

## Test 4-6 Acceleration



## Test 4-7 Acceleration



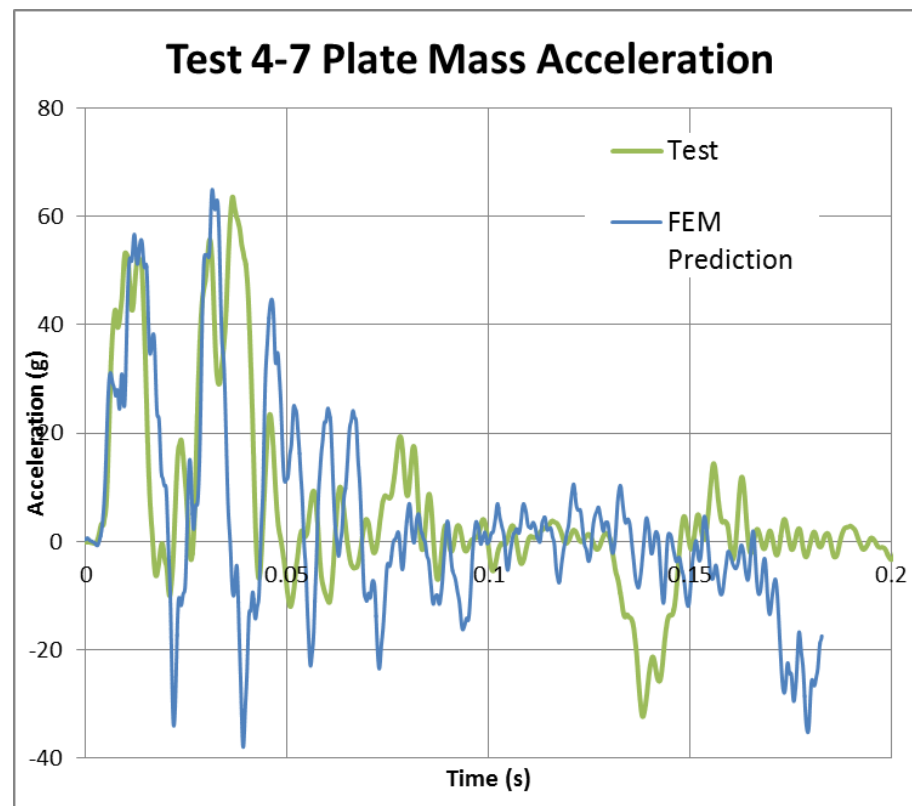
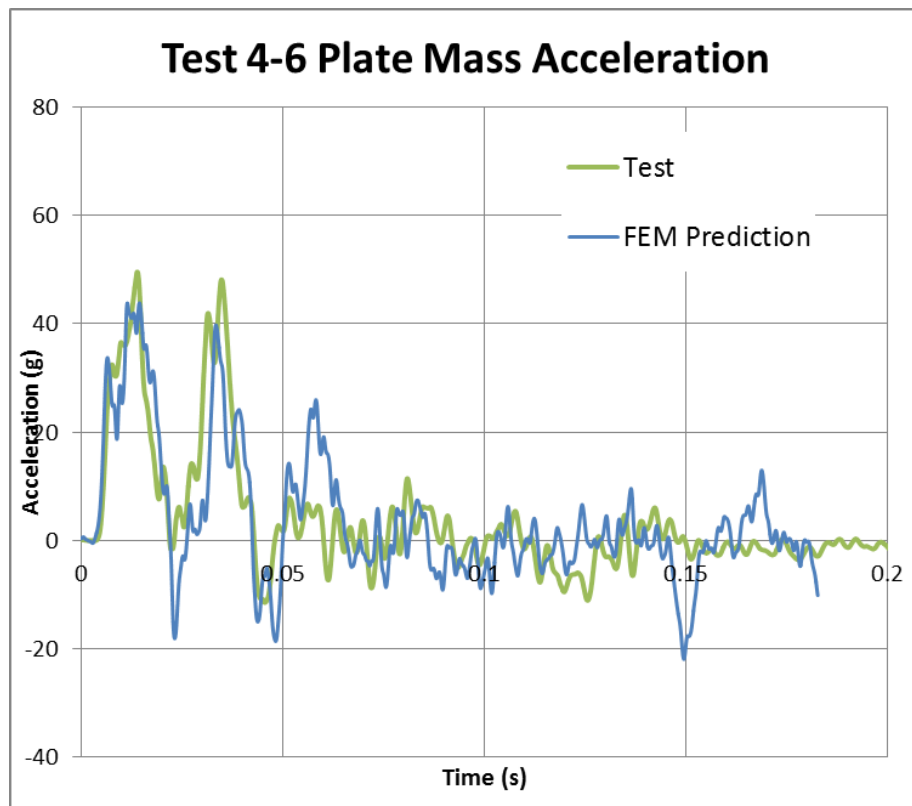
UNCLASSIFIED



# Test Results vs FEM Predictions

7 mass plates (represents 276 lb occupant),  
182.3g input pulse

7 mass plates (represents 276 lb occupant),  
299.5g input pulse



**GOOD CORRELATION!**

UNCLASSIFIED

# Subscale Test Summary Achievements

## Phase I Wrap Up



- The EA wire bender design worked exactly as intended. No issues were observed with the roller or EA wire.
- The ability for this design to provide protection for two equivalent impact events was clearly demonstrated at both the 200g and 325g impact levels. (Seat was dropped twice in a row without modifying or replacing EA wire).
- The spring return and ratchet mechanism worked very well throughout the testing.
- Typically the seat was reset and ready for a second hit approximately 0.2 sec after the initial impact.
- The breakout spring clip functioned as intended. It was shown that the spring clip could be re-engaged after the first hit, thus providing identical performance for the second hit.

# Subscale Test Summary Achievements

## Phase I Wrap Up



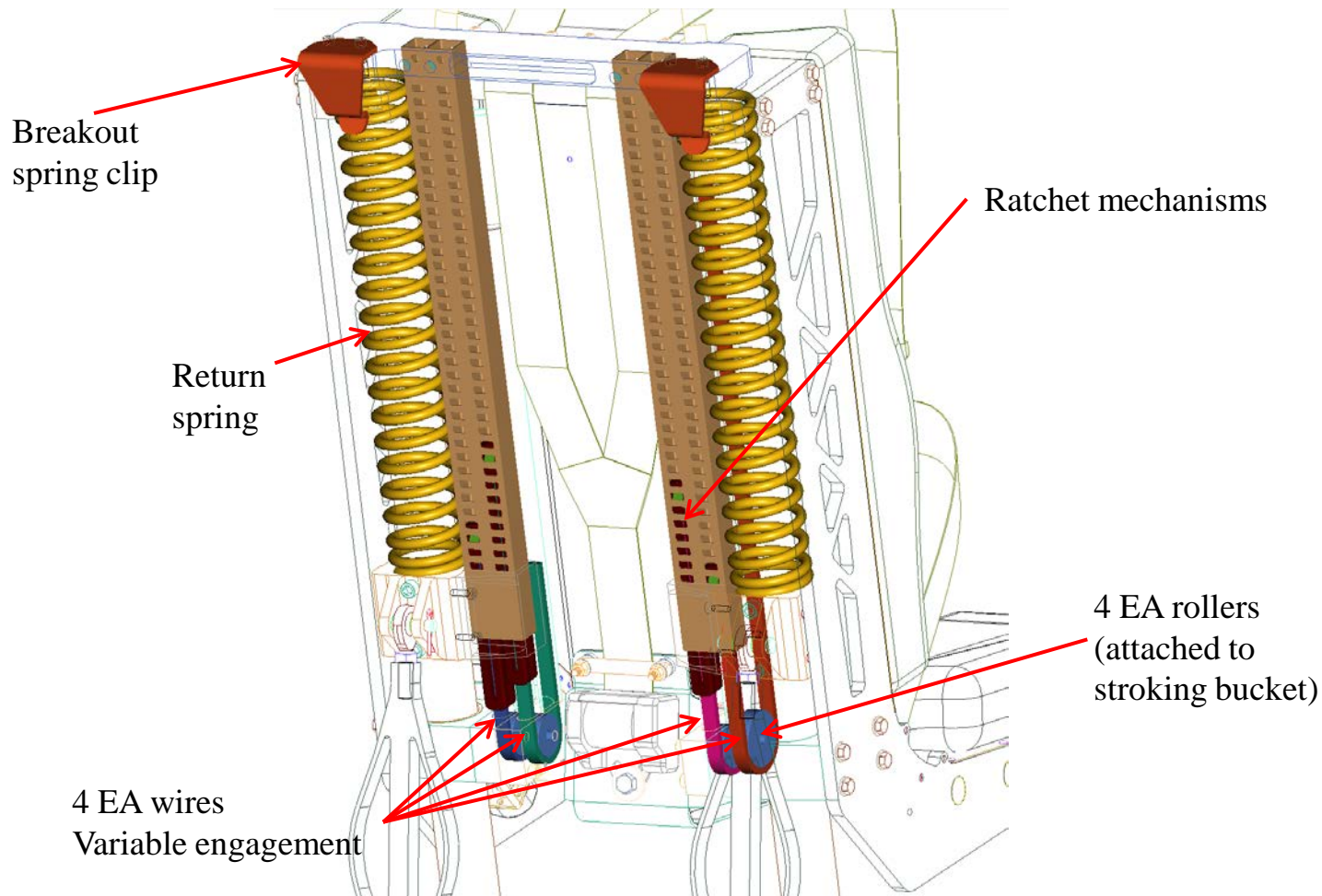
- The seat design was able to provide shock mitigation when the drop table was rotated 15° forward and aft to simulate offset loading.
- The dynamic frictional properties of various coatings were evaluated, providing excellent data for future design activities.
- The test fixture survived 30 drop tests with minimal damage. This clearly demonstrates the robust nature of the design approach.
- FEA model predictions were validated, providing a correlated analysis tool for future design studies.

# Phase II design updates



- Updated design to improve seat performance for full occupant range from 5<sup>th</sup>% female (108 lb) through 95<sup>th</sup>% male + 100 lb gear (323 lb).
  - Updated EA system to utilize a total of four (4) bend wires
  - Each EA wire engages at a different point during the stroke
  - Performed over 50 analysis iterations to optimize design
- Optimization of flexible link design
- Finalized restraint system / interface
- Numerous manufacturability improvements

# Phase II – EA System



UNCLASSIFIED

# Other Completed Phase II tasks



- Performed preliminary Design Failure Modes and Effects Analysis (DFMEA)
- Performed FEA of crash loads per FMVSS standards
- Documented all structural analysis and DFMEA in the “Design Analysis Report” deliverable document
- Generated drop tower test plan, provided in the “Demonstration Plan for Occupant Seat” deliverable document
- Updated drawing package to reflect latest design

# Seat Fabrication – Currently Ongoing



UNCLASSIFIED

# Remaining Work



- Complete fabrication of four (4) seats
  - Estimated completion date: 15 August 2012
- Perform drop tower testing using TARDEC drop tower located at Selfridge Air National Guard Base
  - Late August / Early September 2012
- Perform vehicle or “generic hull” blast testing with seats
  - Blast testing is a complex event that requires input and hardware from many different organizations outside the control of CTC. It is possible that this testing will be scheduled outside this contract’s performance deadline.
- Evaluate test results and generate final report
  - Will be complete by November 2012



# Acknowledgements

- **NDCEE Executive Agent** Mr. Hew Wolfe, DASA (ESOH)
- **NDCEE Program Director** Mr. Pete Sterniski, ODASA (ESOH)
- **NDCEE Program Manager** Mr. Erik Hangeland, RDECOM
- **NDCEE Contracting Officer's Representative** LTC Stephen Spellman, ODASA (ESOH)
- **Government Technical Monitor** Katrina Harris, TARDEC
- **NDCEE Project Manager** Dan Markiewicz
- **NDCEE Team Members** NA

*This work was funded through the Office of the Assistant Secretary of the Army Installations, Energy and Environment and conducted under contract W91ZLK-10-D-0005 Task 0787. The views, opinions, and/or findings contained in this paper are those of the author(s) and should not be construed as an official Department of the Army position, policy, or decision unless so designated by other official documentation.*

UNCLASSIFIED