

# Why Toxicity Values Are in Flux: A Summary and Perspective on Recent IRIS Assessments

**Anita K. Meyer DABT**  
Environmental & Munitions CX  
Huntsville Engineering and Support Center

E<sup>2</sup>S<sup>2</sup> Symposium and Exhibition  
New Orleans, LA

May 10, 2011



# Report Documentation Page

Form Approved  
OMB No. 0704-0188

Public reporting burden for the collection of information is estimated to average 1 hour per response, including the time for reviewing instructions, searching existing data sources, gathering and maintaining the data needed, and completing and reviewing the collection of information. Send comments regarding this burden estimate or any other aspect of this collection of information, including suggestions for reducing this burden, to Washington Headquarters Services, Directorate for Information Operations and Reports, 1215 Jefferson Davis Highway, Suite 1204, Arlington VA 22202-4302. Respondents should be aware that notwithstanding any other provision of law, no person shall be subject to a penalty for failing to comply with a collection of information if it does not display a currently valid OMB control number.

1. REPORT DATE <b>10 MAY 2011</b>		2. REPORT TYPE		3. DATES COVERED <b>00-00-2011 to 00-00-2011</b>	
4. TITLE AND SUBTITLE <b>Why Toxicity Values Are in Flux: A Summary and Perspective on Recent IRIS Assessments</b>				5a. CONTRACT NUMBER	
				5b. GRANT NUMBER	
				5c. PROGRAM ELEMENT NUMBER	
6. AUTHOR(S)				5d. PROJECT NUMBER	
				5e. TASK NUMBER	
				5f. WORK UNIT NUMBER	
7. PERFORMING ORGANIZATION NAME(S) AND ADDRESS(ES) <b>U.S. Army Corps of Engineers (USACE), Environmental and Munitions Center of Expertise (EM CX), 4820 University Square, Huntsville, AL, 35816</b>				8. PERFORMING ORGANIZATION REPORT NUMBER	
9. SPONSORING/MONITORING AGENCY NAME(S) AND ADDRESS(ES)				10. SPONSOR/MONITOR'S ACRONYM(S)	
				11. SPONSOR/MONITOR'S REPORT NUMBER(S)	
12. DISTRIBUTION/AVAILABILITY STATEMENT <b>Approved for public release; distribution unlimited</b>					
13. SUPPLEMENTARY NOTES <b>Presented at the NDIA Environment, Energy Security &amp; Sustainability (E2S2) Symposium &amp; Exhibition held 9-12 May 2011 in New Orleans, LA.</b>					
14. ABSTRACT					
15. SUBJECT TERMS					
16. SECURITY CLASSIFICATION OF:			17. LIMITATION OF ABSTRACT <b>Same as Report (SAR)</b>	18. NUMBER OF PAGES <b>17</b>	19a. NAME OF RESPONSIBLE PERSON
a. REPORT <b>unclassified</b>	b. ABSTRACT <b>unclassified</b>	c. THIS PAGE <b>unclassified</b>			

# Role of Risk Assessment on Environmental Projects

- Used to determine whether site requires further study or remediation
- Used with regulatory values to determine cleanup levels
- Risk-based screening levels (aka PRGs, RBCs, RSLs)
  - ▶ Screen sites early in project lifecycle
  - ▶ Determine project quantitation limits



# Risk-Based Values Function of Toxicity and Exposure

$$\text{Risk} = \frac{\text{Intake}}{\text{Toxicity}}$$

↑ Toxicity = ↓ Criteria

- Tiered approach used to identify toxicity values for site risk assessments
- Integrated Risk Information System (IRIS)
- IRIS values also inform regulatory decisions (MCLs etc.)



# Emerging Contaminants (ECs)

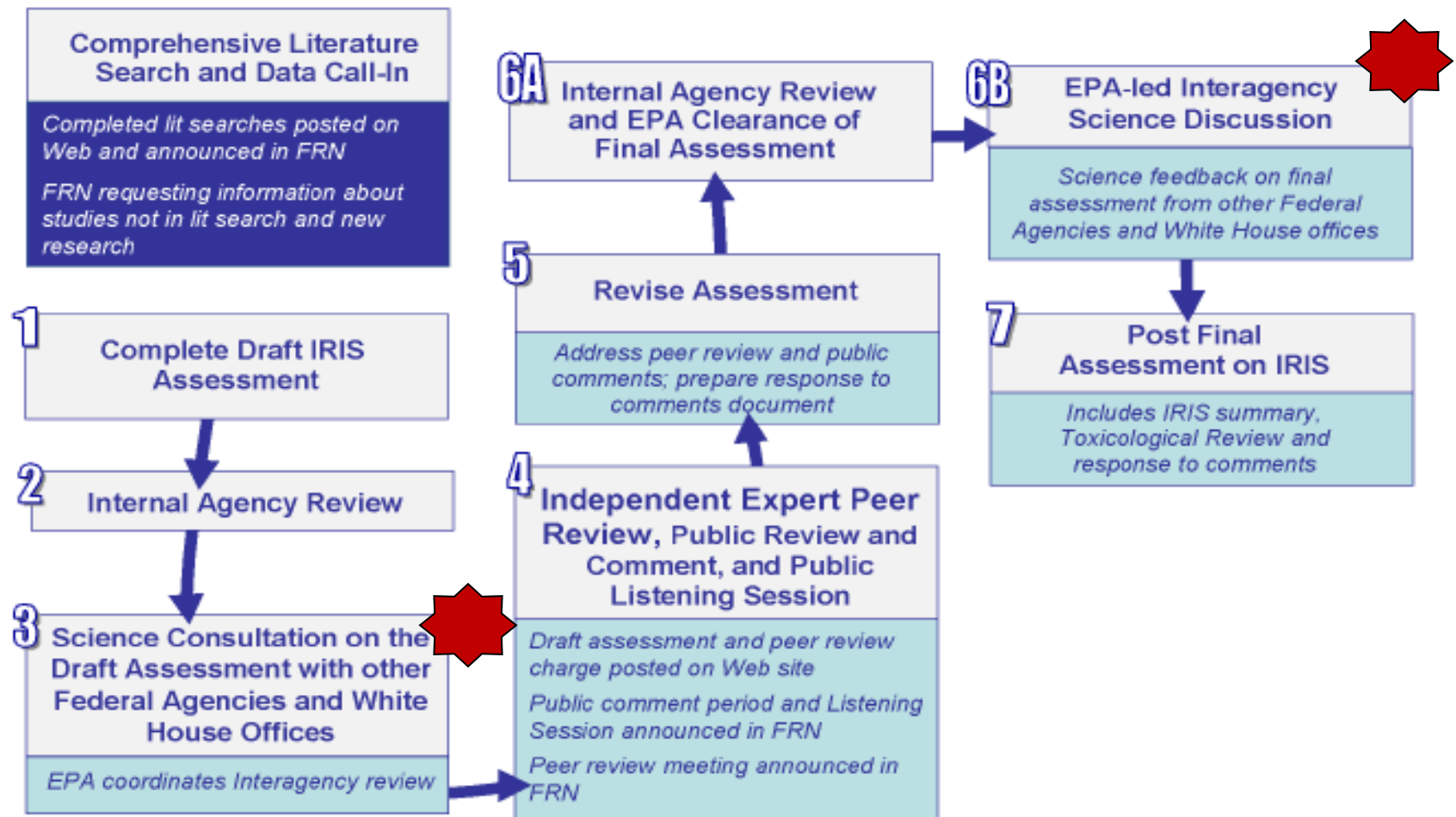
- Are chemicals or materials of interest that are characterized by:
  - ▶ a perceived or real threat to human health or environment, and
  - ▶ there is no currently published health standard or there is an existing health standard, but the standard is evolving or being re-evaluated.

Source: “Initiation of Emerging Contaminants Characterization and Response Actions for Protection of Human Health” Issue Paper (ECOS & DoD Sustainability Workgroup, 2008)



# DoD Participation in IRIS Interagency Reviews

## Assessment Development Process for New IRIS



# Potential Changes in Risk Assessment of PAHs

- Relative potency factors used to assess carcinogenicity of PAHs – all set relative to benzo(a)pyrene
- EPA: “Development of a Relative Potency Factor (RPF) Approach for Polycyclic Aromatic Hydrocarbon (PAH) Mixtures”
  - ▶ Under review by EPA Science Advisory Board
- RPF approach retained but updated by new data/science



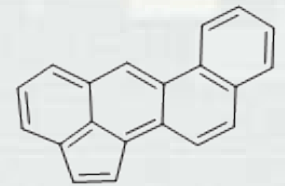
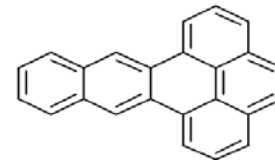
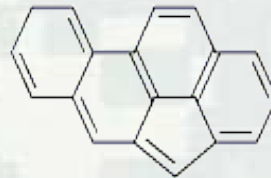
# Carcinogenic PAHs and Relative Potency Factors

	Current RPF	Draft RPF
Benzo(a)pyrene	1	1
Benz(a)anthracene	0.1	0.2
Benzo(b)fluoranthene	0.1	0.5
Benzo(k)Fluoranthene	0.01	0.03
Chrysene	0.001	0.1
Dibenz(a,h)anthracene	1	6
Indeno(1,2,3-c,d)pyrene	0.1	0.07



# Additional PAHs from 2010 RPF Assessment

- Anthanthrene
- Benzo[g,h,i]perylene
- Benzo[j]fluoranthene
- Cyclopenta[c,d]pyrene
- Dibenzo[a,e]fluoranthene
- Dibenzo[a,e]pyrene
- Dibenzo[a,h]pyrene
- Dibenzo[a,i]pyrene
- Dibenzo[a,l]pyrene
- Fluoranthene
- Benz[b,c]aceanthrylene
- Benz[e]aceanthrylene
- Benz[j]aceanthrylene (60x)
- Benz[l]aceanthrylene
- Cyclopenta[d,e,f]chrysene
- Naphtho[2,3-e]pyrene



# Tetrachloroethylene

## Status: External Peer Review

- 1998 initiated
- June 2008 external review version released
- Nat'l Academy Review Feb 2006
- Current external (SAB) and public review

<b>Risk-Based Screening Levels*</b>			
	Res. Soil (mg/kg)	Res. Water Use (µg/L)	Indoor Air (µg/m <sup>3</sup> )
Current	0.55	0.11	0.41
New (draft)	0.293	0.179	0.122
Sources of current toxicity values include EPA IRIS, ATSDR and CalEPA. Lowest RSL target risk = $10^{-6}$ . Draft values not suitable for project use.			

# Trichloroethylene

## Status: External Peer Review

- IRIS values withdrawn late 1980s
- 2001 draft released
- 2006 NAS review
- 2009 re-released
- Lowest RSLs based on  $10^{-6}$  cancer risk

Risk-Based Screening Levels*			
	Res. Soil (mg/kg)	Res. Water Use ( $\mu\text{g/L}$ )	Indoor Air ( $\mu\text{g/m}^3$ )
Current	2.8	2	1.2
New (draft)	0.48	0.23	0.24
CalEPA source of current values. Lowest RSL target risk = $10^{-6}$ . Draft values not suitable for project use.			



# Dioxin

## Status: External Peer Review

- Assessment initiated in 1990
- Released for public and peer review 2010
- Using cancer toxicity values in this draft residential screening levels could be as low as 0.45 ppt dioxin toxicity equivalent (TEQ, for dioxin-like compounds)
- Current EPA policy recommends 1000 ppt
  - ▶ EPA may release an Interim PRG



# Hexavalent Chromium

## Status: External Peer Review

- Derives an oral slope factor using 2008 National Toxicology Program studies
- NTP studies also used to update noncancer ingestion value (3x change)
- Lowest RSLs based on  $10^{-6}$  cancer risk

Risk-Based Screening Levels*		
	Res. Soil (mg/kg)	Res. Water Use ( $\mu\text{g/L}$ )
Old	2300	11
New (draft)	0.29	0.043
Draft values not suitable for project use. Cancer risk drives new RSLs.		



# Final IRIS Reference Dose for Cis-1,2-Dichloroethylene (September 2010)

- Oral noncancer reference dose (RfD) = 0.002 mg/kg-day; increased kidney weight
  - ▶ PPRTV used until this time
  - ▶ MCL = 70 µg/L
- No cancer toxicity values published

Risk-Based Screening Levels*		
	Residential Soil (mg/kg)	Residential Water Use (µg/L)
Old	780	370
New	156	73
Fold Change		5x



# Final IRIS Reference Dose for Trans-1,2- Dichloroethylene (September 2010)

- Oral noncancer reference dose (RfD) = 0.02 mg/kg-day;
- Based on decreased antibody production by the spleen
- No change in RfD value, but change of critical effect
- MCL = 100 µg/L
- No cancer toxicity values published



# Final IRIS Values for 1,4-Dioxane (August 2010)

- Oral noncancer reference dose (RfD) = 0.03 mg/kg-day; Liver & kidney effects
  - ▶ Inhalation RfC will be developed in separate document
- Oral cancer slope factor (SF) = 0.1 mg/kg-day<sup>-1</sup>; Rodent liver tumors

Risk-Based Screening Levels*		
	Residential Soil (mg/kg)	Residential Water Use (µg/L)
Old	44.1	6.1
New	4.85	0.67
Fold Change		9x



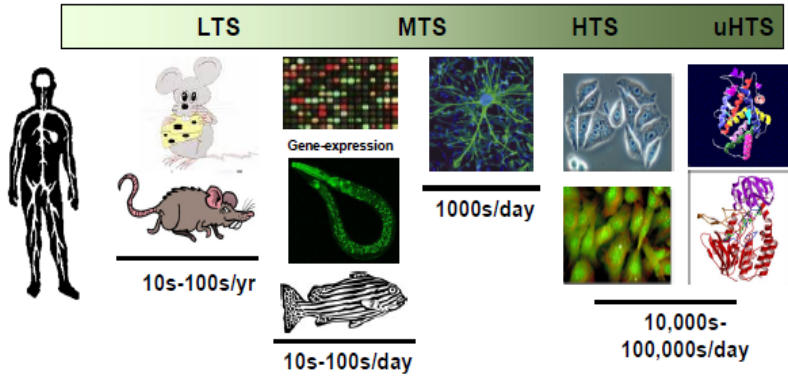
# Basis for Changes

- New study data
  - ▶ Sensitive measurements
- Science policy
  - ▶ Mutagenic mode action adjustment
  - ▶ Uncertainty factor application
  - ▶ Benchmark Dose
- Other impacts
  - ▶ Critical study selection
  - ▶ Linear low dose extrapolation



# High-Throughput Screening Assays

batch testing of chemicals for pharmacological/toxicological endpoints using automated liquid handling, detectors, and data acquisition



Human Relevance/  
Cost/Complexity

Throughput/  
Simplicity

Office of Research and Development  
National Center for Computational Toxicology

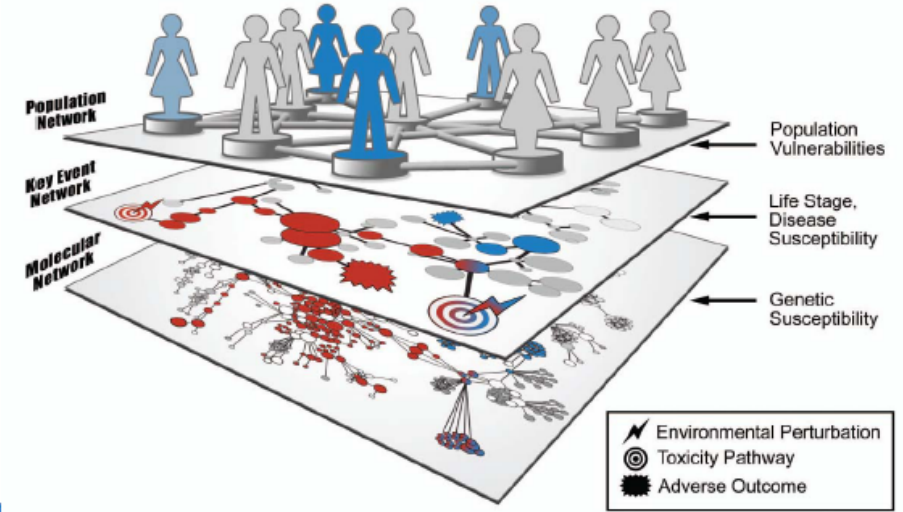
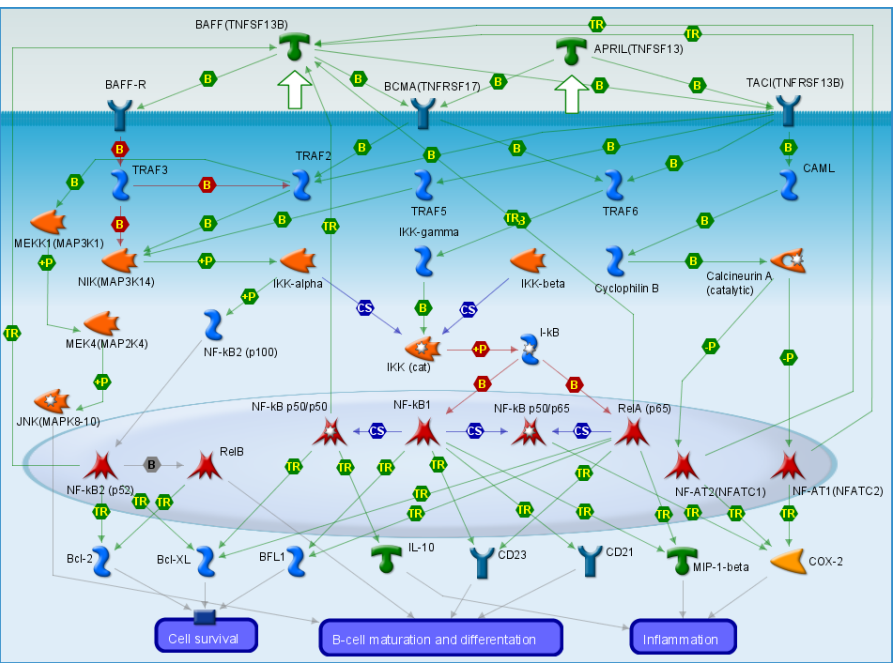
## The future!

### EPA Next Generation Risk Assessment

New technology will lead to greater capacity and speed. Interpretation of results is a challenge; studies underway to link known effects with screening assay data.

### Systems Exposure Science : Extending Network Analysis

Consider coupled networks spanning multiple levels of biological organization



Environmental Perturbation  
 Toxicity Pathway  
 Adverse Outcome