

Waves and Fetch in the Marginal Ice Zone

Jim Thomson
Applied Physics Lab, University of Washington
phone: 206-616-0858 fax: 206-616-5467 email: jthomson@apl.uw.edu

Award Number: N00014-12-1-0113
FY12 report (year 1)

LONG-TERM GOALS

The long-term goal is to improve prediction of the arctic Marginal Ice Zone (MIZ) by improving basic understanding of the interaction between waves, sea ice, and open water (i.e., fetch).

OBJECTIVES

The primary objective is to improve wave source/sink parameterizations by directly measuring the growth and dissipation of waves in the MIZ. The secondary objective is to develop a surface wave climatology of the arctic ocean and the relation to the seasonal MIZ.

APPROACH

The technical approach is to use custom Surface Wave Instrument Floats with Tracking (SWIFT) to measure waves, winds, and turbulence at the air-sea-ice interface. Figure 1 shows the SWIFT with an example observation of a breaking wave and related turbulent energy dissipation rate. These seasonal SWIFT measurements are to be placed in context using mutliyear subsurface Acoustic Wave And Current (AWAC) moorings and regional Wave Watch III model results.

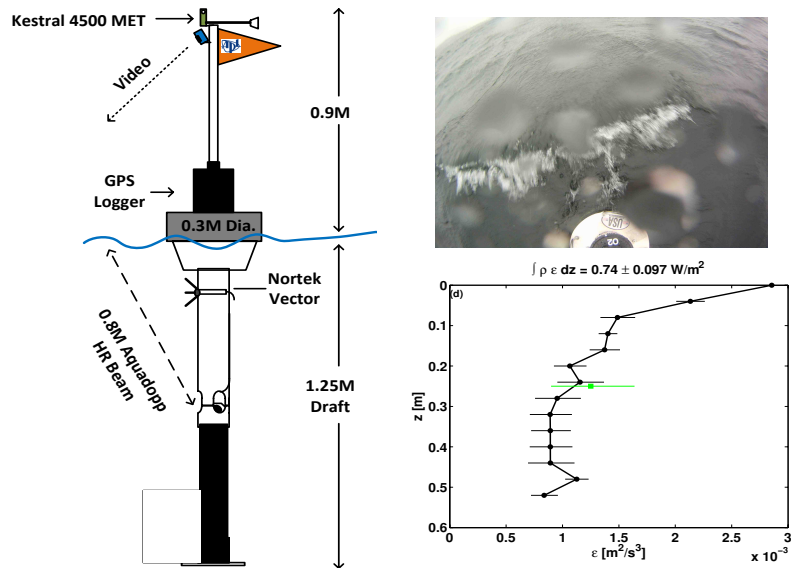


Figure 1: Left: Surface Wave Instrument Float with Tracking (SWIFT). Right: breaking wave example surface image and turbulent dissipation rate. The dissipation rate is shown as a vertical profile from the surface ($z=0$) downwards beneath the wave.

Report Documentation Page

Form Approved
OMB No. 0704-0188

Public reporting burden for the collection of information is estimated to average 1 hour per response, including the time for reviewing instructions, searching existing data sources, gathering and maintaining the data needed, and completing and reviewing the collection of information. Send comments regarding this burden estimate or any other aspect of this collection of information, including suggestions for reducing this burden, to Washington Headquarters Services, Directorate for Information Operations and Reports, 1215 Jefferson Davis Highway, Suite 1204, Arlington VA 22202-4302. Respondents should be aware that notwithstanding any other provision of law, no person shall be subject to a penalty for failing to comply with a collection of information if it does not display a currently valid OMB control number.

1. REPORT DATE 2012	2. REPORT TYPE N/A	3. DATES COVERED -		
4. TITLE AND SUBTITLE Waves and Fetch in the Marginal Ice Zone		5a. CONTRACT NUMBER		
		5b. GRANT NUMBER		
		5c. PROGRAM ELEMENT NUMBER		
6. AUTHOR(S)		5d. PROJECT NUMBER		
		5e. TASK NUMBER		
		5f. WORK UNIT NUMBER		
7. PERFORMING ORGANIZATION NAME(S) AND ADDRESS(ES) Applied Physics Lab, University of Washington		8. PERFORMING ORGANIZATION REPORT NUMBER		
9. SPONSORING/MONITORING AGENCY NAME(S) AND ADDRESS(ES)		10. SPONSOR/MONITOR'S ACRONYM(S)		
		11. SPONSOR/MONITOR'S REPORT NUMBER(S)		
12. DISTRIBUTION/AVAILABILITY STATEMENT Approved for public release, distribution unlimited				
13. SUPPLEMENTARY NOTES The original document contains color images.				
14. ABSTRACT				
15. SUBJECT TERMS				
16. SECURITY CLASSIFICATION OF:			17. LIMITATION OF ABSTRACT	
a. REPORT unclassified	b. ABSTRACT unclassified	c. THIS PAGE unclassified	SAR	18. NUMBER OF PAGES 3
				19a. NAME OF RESPONSIBLE PERSON

WORK COMPLETED

Planning has begun for a large field experiment in 2014. Two planning meetings occurred, with combined logistics and science considerations underway. Multiple pilot efforts are also underway. Specifically, an AWAC was added to mooring 'A' (75 N, 152 W) of the NSF-funded Beaufort Gyre Exploration Project (BGEF), which was deployed in Aug 2012. The mooring will be serviced in Aug 2013 and will provide the first year-long time series of waves in the Beaufort Gyre. Figure 2 shows the AWAC sub-surface float, designed and built by the WHOI mooring group.

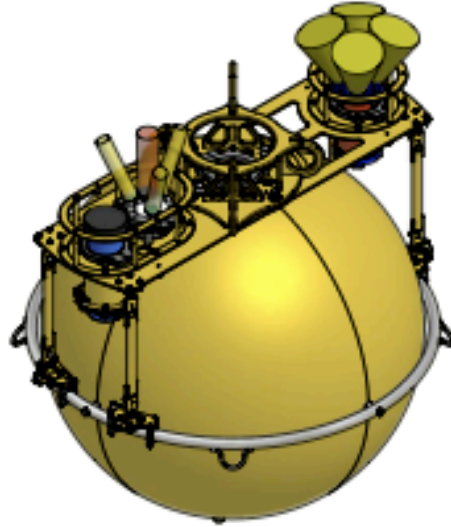


Figure 2: Sub-surface float at BGEF mooring 'A', including the APL-UW Acoustic Wave and Current (AWAC) instrument on the left side. The orange acoustic beam measures wave height and ice draft.

In addition, Wave Watch 3 model hindcasts have been analyzed to estimate the wave climatology of the Beaufort Sea during open water periods and the likely conditions for the 2014 field experiment.

RESULTS

Wave watch 3 hindcast analysis indicates that significant wave heights in the lower Beaufort Sea can reach 5 m soon after the ice retreats from the shore (typically by July 1st, see Figure 3). In August and September, the hindcast wave heights are directly linked to the open water fetch and the storm energy available for wave generation. For the experiment in 2014, the model suggests that assets deployed in advance on the ice will experience strong wave forcing sequentially south to north, consistent with the assumptions used for the draft MIZ science/experiment plan.

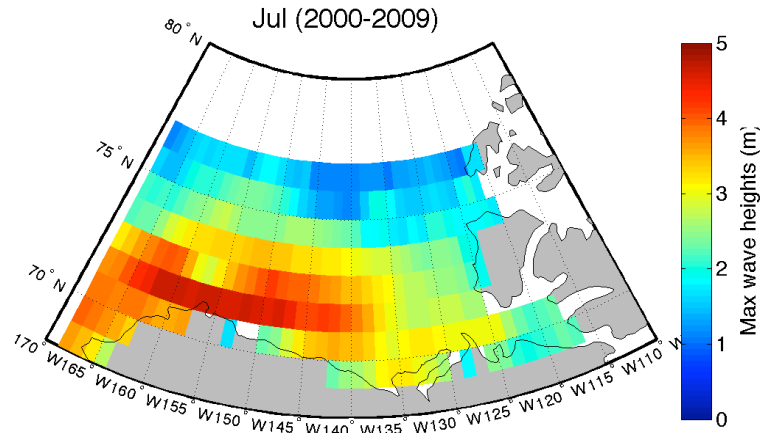


Figure 3: Maximum wave height predicted in the Beaufort Sea during the month of July using Wave Watch 3 hindcasts from 2000 to 2009.

IMPACT/APPLICATIONS

Improved wave and MIZ predictions in the Arctic Ocean will enable safe naval operations in the region.

RELATED PROJECTS

Development of the SWIFT platform and algorithms has been supported via an ongoing NSF project, entitled “Spectral Dissipation of Broad-banded Waves”.

REFERENCES

Thomson, J. “Wave breaking dissipation observed with SWIFT drifters”, *J. Atmos. Ocean. Tech*, in press.