

Seabed Dynamics in the Adriatic Sea and Western Gulf of Lions

Robert A. Wheatcroft
College of Oceanic & Atmospheric Sciences
Oregon State University
Corvallis, OR 97331
phone: (541) 737-3891 fax: (541) 737-2064 e-mail: raw@coas.oregonstate.edu

Award Number: N00014-04-1-0314
<http://www.coas.oregonstate.edu/faculty/wheatcroft.html>

LONG-TERM GOALS

The ultimate objective of this research program is to obtain a predictive understanding of the physical and biological processes responsible for the formation, alteration and preservation of sedimentary strata on continental margins. The general approach is to use focused field measurements to develop and test hypotheses.

OBJECTIVES

This project is in a transition between completing analyses of results obtained in the Adriatic Sea during FY01-03, and starting new fieldwork in the Gulf of Lions (GOL) in FY05. The Adriatic research has two broad objectives. First, we are testing the idea that river basin size has a first-order impact on the initial distribution and character of strata in the receiving basin. In particular, we hypothesize that large rivers (e.g. Po), in which discharge peaks are decoupled from oceanic conditions, produce thick beds that have large horizontal continuity and significant vertical (i.e., temporal) variation in physical properties. In contrast, small rivers (e.g., Apennine rivers) produce thin beds, which due to subsequent bioturbation have low horizontal continuity and little vertical variability. Second, we are exploring the idea that large-scale spatial variability in sediment erodibility may control accumulation rate patterns in the western Adriatic (Po River to Gargano peninsula).

Our objectives in the Gulf of Lions are to extend, through collaborations with Patricia Wiberg, Tim Milligan and Paul Hill, our studies of sediment erodibility. In this case we are focusing on whether there are cross-shelf gradients of erodibility in the western GOL, and what controls such gradients. In addition, we are deploying a new bottom-boundary layer tripod that will collect high frequency data on sediment porosity, thereby potentially providing important information on temporal and small-scale spatial change in seabed properties.

APPROACH

Our approach in the GOL research is twofold. First, we use a hydraulically dampened gravity corer to collect samples for the sediment erodibility study. This custom-built corer is well suited to collect high-quality cores in a variety of sediment types (e.g., sands and muds). In the laboratory, we use a variety of techniques to collect high-resolution porosity, roughness, textural and biogeochemical (e.g., exocellular polymeric substances, chlorophyll a) data. Second, through DURIP funding we have constructed an autonomous resistivity profiler (ARP). ARP is an extension of an earlier microresistivity

Report Documentation Page

Form Approved
OMB No. 0704-0188

Public reporting burden for the collection of information is estimated to average 1 hour per response, including the time for reviewing instructions, searching existing data sources, gathering and maintaining the data needed, and completing and reviewing the collection of information. Send comments regarding this burden estimate or any other aspect of this collection of information, including suggestions for reducing this burden, to Washington Headquarters Services, Directorate for Information Operations and Reports, 1215 Jefferson Davis Highway, Suite 1204, Arlington VA 22202-4302. Respondents should be aware that notwithstanding any other provision of law, no person shall be subject to a penalty for failing to comply with a collection of information if it does not display a currently valid OMB control number.

1. REPORT DATE 30 SEP 2005		2. REPORT TYPE		3. DATES COVERED 00-00-2005 to 00-00-2005	
4. TITLE AND SUBTITLE Seabed Dynamics in the Adriatic Sea and Western Gulf of Lions				5a. CONTRACT NUMBER	
				5b. GRANT NUMBER	
				5c. PROGRAM ELEMENT NUMBER	
6. AUTHOR(S)				5d. PROJECT NUMBER	
				5e. TASK NUMBER	
				5f. WORK UNIT NUMBER	
7. PERFORMING ORGANIZATION NAME(S) AND ADDRESS(ES) Oregon State University, College of Oceanic & Atmospheric Sciences, Corvallis, OR, 97331				8. PERFORMING ORGANIZATION REPORT NUMBER	
9. SPONSORING/MONITORING AGENCY NAME(S) AND ADDRESS(ES)				10. SPONSOR/MONITOR'S ACRONYM(S)	
				11. SPONSOR/MONITOR'S REPORT NUMBER(S)	
12. DISTRIBUTION/AVAILABILITY STATEMENT Approved for public release; distribution unlimited					
13. SUPPLEMENTARY NOTES code 1 only					
14. ABSTRACT The ultimate objective of this research program is to obtain a predictive understanding of the physical and biological processes responsible for the formation, alteration and preservation of sedimentary strata on continental margins. The general approach is to use focused field measurements to develop and test hypotheses.					
15. SUBJECT TERMS					
16. SECURITY CLASSIFICATION OF:			17. LIMITATION OF ABSTRACT Same as Report (SAR)	18. NUMBER OF PAGES 5	19a. NAME OF RESPONSIBLE PERSON
a. REPORT unclassified	b. ABSTRACT unclassified	c. THIS PAGE unclassified			

profiler that can move in three dimensions and has a data/power endurance of several months. In concert with a stereocamera, bottom altimeter, and Sontek Hydra system (pressure, currents, temperature, salinity and turbidity), the ARP tripod will be deployed at a 28-m site off the Tet River in the western GOL. Besides the collaborators discussed below, personnel on this project included a research technician, Roger Lewis, who supported the PI in the lab and at sea. Roger departed the lab in May 2005. In addition, a graduate student, Andrew Stevens, completed a M.S. degree in mid-November on seabed properties of the western Adriatic margin, and now conducts diverse data analysis on a part time basis (0.2 FTE).

WORK COMPLETED

During FY05, the PI served as co-chief scientist on three separate research cruises in the Gulf of Lions on the RVs Oceanus (October 2004) and Endeavor (February & April, 2005). Activities during those cruises involved the use of the hydraulically dampened gravity corer to collect seabed samples (~ 150 cores) on an across-margin transect off the Tet River, and the deployment and recovery of the ARP tripod at the 28-m buoy site. The tripod deployment had been scheduled for October, but problems involving foreign clearances necessitated a delay to the February-April time period. Laboratory efforts during the year involved image processing of digital x-radiographs from the Po prodelta region, processing shipboard resistivity data collected during each of the GOL cruises, and processing the diverse data sets from the bottom tripod (e.g., Sontek, ARP). In addition to these field and laboratory activities, we have been actively involved in the preparation and revision of a variety of manuscripts (see list below).

RESULTS

Two results are highlighted. First, we have documented an along-margin change in the small-scale grain size and fabric of a readily recognizable – outwardly uniform - unit within the Po 2000 flood deposit. At sites distal to the main mouth of the river, the unit has a bimodal grain size distribution and is characterized by cross laminations. In contrast, immediately offshore the main mouth the unit is a poorly sorted, structureless bed that coarsens upward (Fig. 1). The latter is a diagnostic feature of hyperpycnal flow deposits (Mulder et al. 2001), and, together, with the diversity of other units within the deposit, suggests the Po flood deposit was emplaced during a range of sediment dynamic conditions. The likely reason for this variability is the large size of the Po River basin, which results in a long-duration flood.

Second, the successful ARP deployment, during which over 350 profiles of sediment porosity were obtained, permits meaningful statistical analyses of sub-bottom physical properties. Interestingly, the data indicate a depth-dependent shift in the skewness of the porosity distribution, with positive skewness near the surface and increasingly negative skewness with depth (Fig. 2). The positive skewness at the surface most likely reflects a higher abundance of open biogenic structures within this region, whereas the cause of the negative skewness at depth remains under investigation.

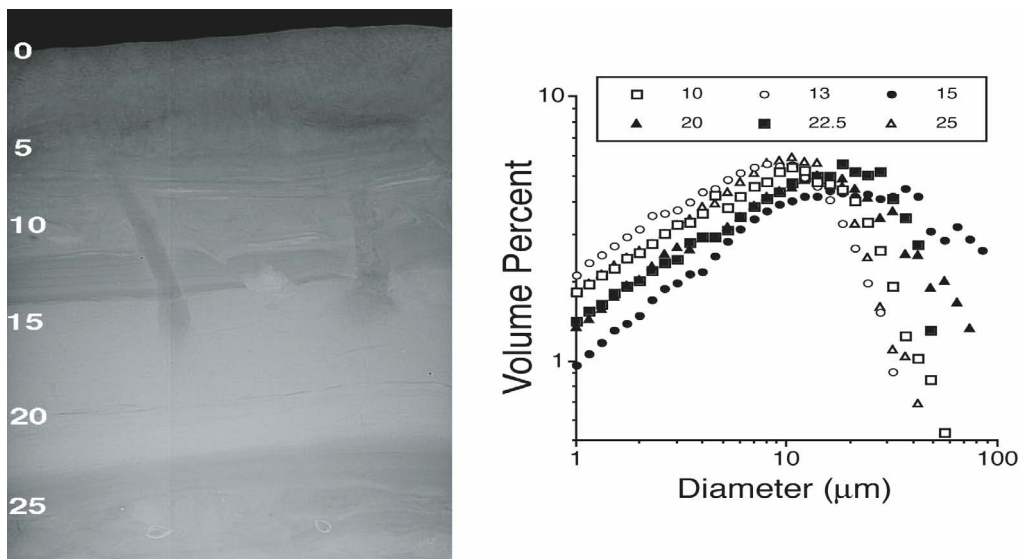


Figure 1. On the left, digital x-radiograph from station ED20 showing a 10-cm thick, x-ray opaque layer within the October 2000 Po River flood deposit. On the right are disaggregated inorganic grain size data that show a coarsening upward trend within the unit, whereby there is an increase in volume percent in the 40 to 100 μm fraction toward the top of the unit (grain size data courtesy of T. Milligan, Bedford Institute of Oceanography).

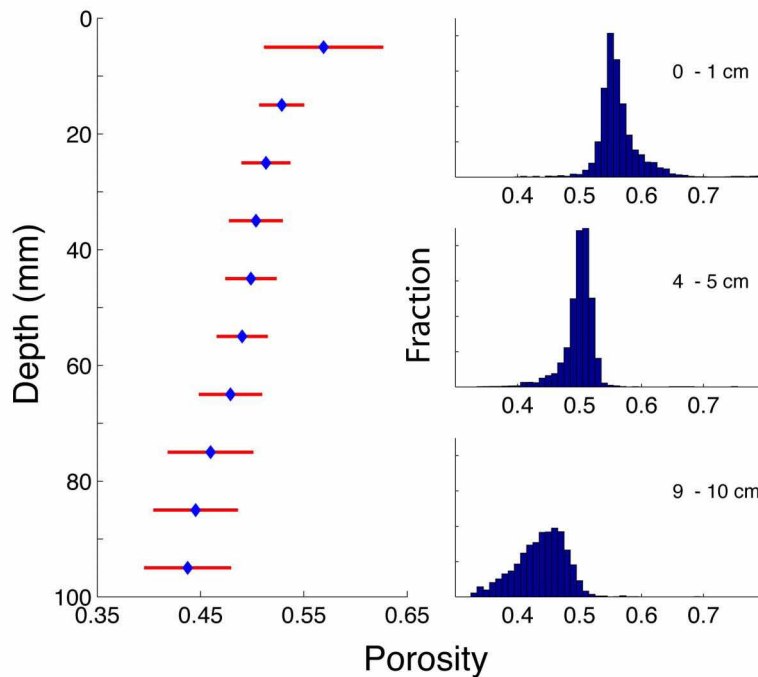


Figure 2. Mean \pm standard deviation of porosity vs. depth within the sediment at the 28-m Tet buoy site. Near-surface values are ~ 0.58 and there is an approximately linear decrease to 0.44 at 9-10 cm. On the right are three panels showing frequency distributions of porosity at 0-1, 4-5 and 9-10 cm. Skewness changes from positive to negative as depth increases.

PUBLICATIONS

Wheatcroft, R.A. & C.K. Sommerfield. 2005. River sediment flux and shelf sediment accumulation rates on the Pacific Northwest margin. *Continental Shelf Research* 25:311-332.

Palinkas, C.M., C.A. Nittrouer, R.A. Wheatcroft & L. Langone. 2005. The use of ⁷Be to identify event and seasonal sedimentation near the Po River delta, Adriatic Sea. *Marine Geology* (in press).

Stevens, A.W. R.A. Wheatcroft & P.L. Wiberg. 2006. The impact of physical and biological properties on the erodibility of sediments along the western Adriatic Sea. *Continental Shelf Research* (in press).

Wheatcroft, R. A., A. W. Stevens, L. M. Hunt, & T. G. Milligan. 2006a. The large-scale distribution and internal geometry of the Fall 2000 Po River flood deposit: evidence from digital x-radiography. *Continental Shelf Research* (in press).

Wheatcroft, R.A., P.L. Wiberg & 6 others. 2006a. Post-depositional alteration and preservation of sedimentary strata. In: *Continental Margin Sedimentation: From Sediment Transport to Sequence Stratigraphy*, C. A. Nittrouer et al. (eds), Blackwell Press, (in press).

Hill, P. S., 10 others & R.A Wheatcroft. 2006. Sediment delivery to the seabed on the Eel River continental margin. In: *Continental Margin Sedimentation: From Sediment Transport to Sequence Stratigraphy*, C. A. Nittrouer et al. (eds), Blackwell Press, (in press).

Sommerfield, C.K., 7 others & R.A Wheatcroft. 2006. Oceanic dispersal and accumulation of river sediment. In: *Continental Margin Sedimentation: From Sediment Transport to Sequence Stratigraphy*, C. A. Nittrouer et al. (eds), Blackwell Press, (in press).

Wheatcroft, R.A. Time-series measurements of macrobenthos and bioturbation intensity on a flood-dominated continental shelf, northern California. *Progress in Oceanography* (in review).

Sommerfield, C.K. & R.A. Wheatcroft. Late Holocene to modern sediment accumulation on the northern California shelf: Fluvial, oceanic and anthropogenic influences. *Geological Society of America Bulletin* (in review).