

A nest experiment of the Indonesian Seas

Xiaobiao Xu

Marine Science Department/ USM

Harley Hurlburt, Joe Metzger

Naval Research Laboratory/ SSC

Report Documentation Page

*Form Approved
OMB No. 0704-0188*

Public reporting burden for the collection of information is estimated to average 1 hour per response, including the time for reviewing instructions, searching existing data sources, gathering and maintaining the data needed, and completing and reviewing the collection of information. Send comments regarding this burden estimate or any other aspect of this collection of information, including suggestions for reducing this burden, to Washington Headquarters Services, Directorate for Information Operations and Reports, 1215 Jefferson Davis Highway, Suite 1204, Arlington VA 22202-4302. Respondents should be aware that notwithstanding any other provision of law, no person shall be subject to a penalty for failing to comply with a collection of information if it does not display a currently valid OMB control number.

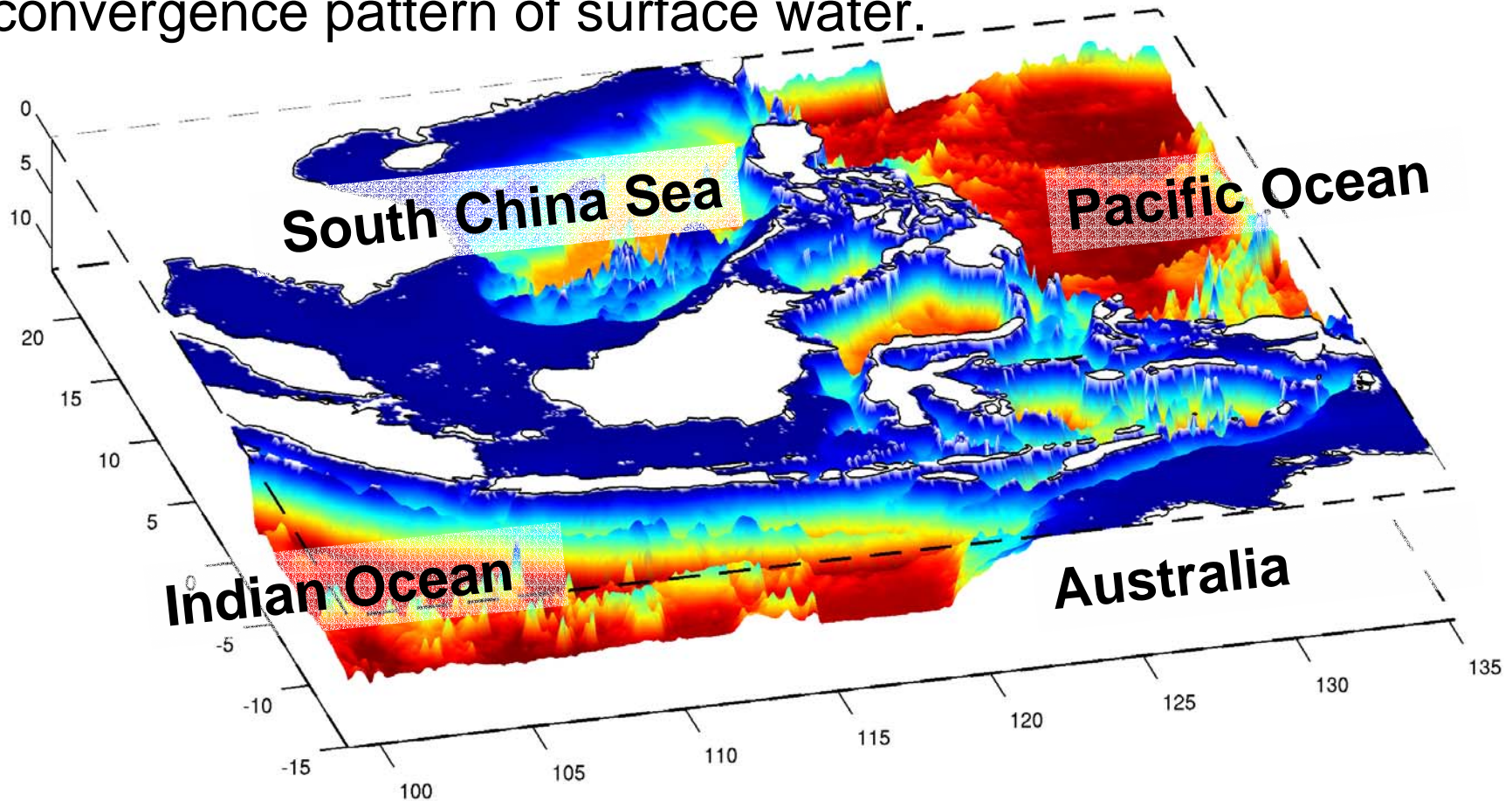
1. REPORT DATE APR 2007	2. REPORT TYPE	3. DATES COVERED 00-00-2007 to 00-00-2007		
4. TITLE AND SUBTITLE A nest experiment of the Indonesian Seas		5a. CONTRACT NUMBER		
		5b. GRANT NUMBER		
		5c. PROGRAM ELEMENT NUMBER		
6. AUTHOR(S)		5d. PROJECT NUMBER		
		5e. TASK NUMBER		
		5f. WORK UNIT NUMBER		
7. PERFORMING ORGANIZATION NAME(S) AND ADDRESS(ES) Naval Research Laboratory, Stennis Space Center, MS, 39529		8. PERFORMING ORGANIZATION REPORT NUMBER		
9. SPONSORING/MONITORING AGENCY NAME(S) AND ADDRESS(ES)		10. SPONSOR/MONITOR'S ACRONYM(S)		
		11. SPONSOR/MONITOR'S REPORT NUMBER(S)		
12. DISTRIBUTION/AVAILABILITY STATEMENT Approved for public release; distribution unlimited				
13. SUPPLEMENTARY NOTES 11th HYCOM Consortium Meeting, Apr 24-26, 2007, Stennis Space Center, MS				
14. ABSTRACT				
15. SUBJECT TERMS				
16. SECURITY CLASSIFICATION OF:			17. LIMITATION OF ABSTRACT	
a. REPORT unclassified	b. ABSTRACT unclassified	c. THIS PAGE unclassified	Same as Report (SAR)	18. NUMBER OF PAGES 14
				19a. NAME OF RESPONSIBLE PERSON

ITF in global climate

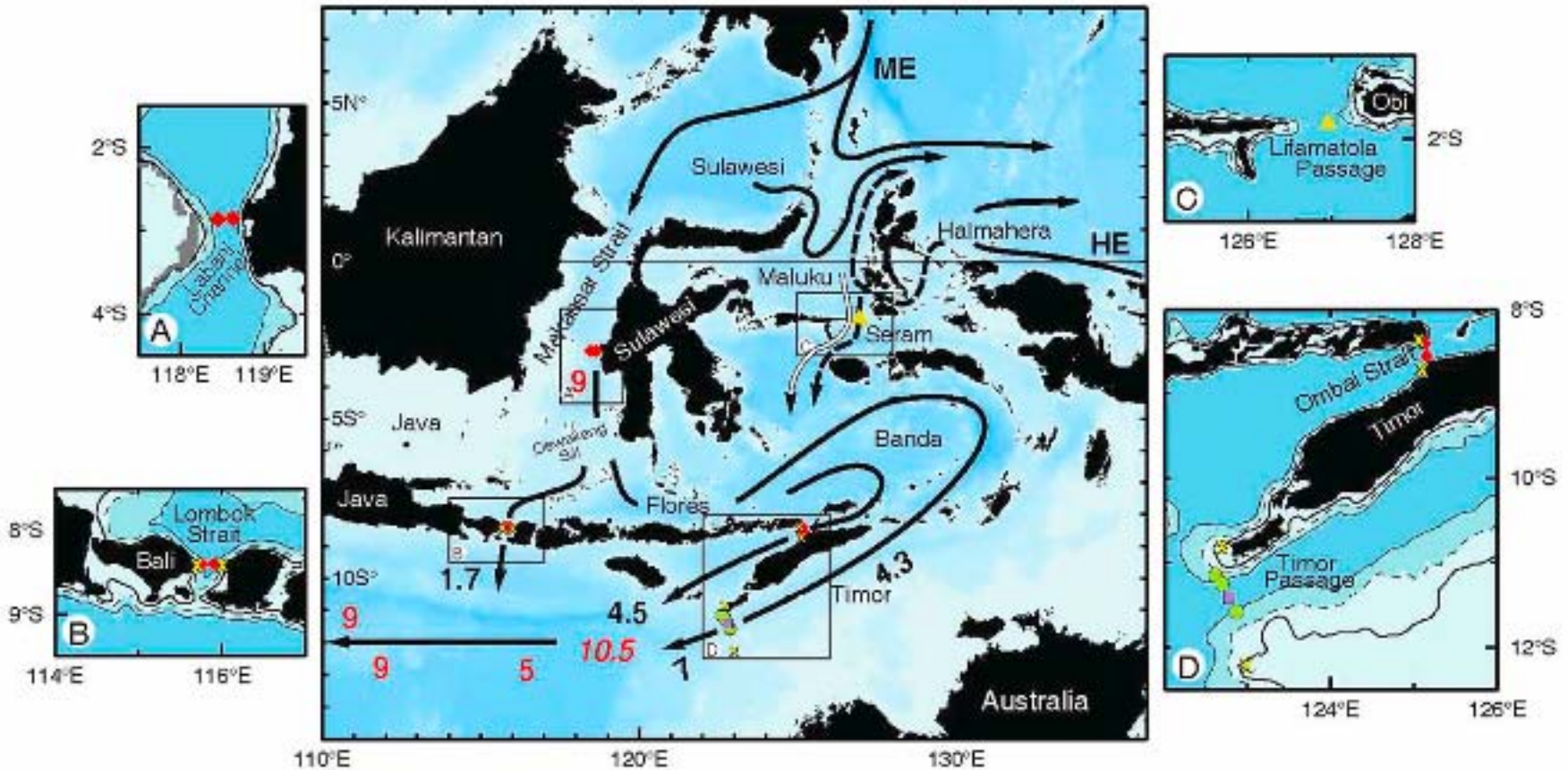
- Large scale observations (by direct measurements and inverse solutions) reveal a significant export of mass, heat, and freshwater from the Pacific to the Indian Ocean through the Indonesian Seas (Indonesian Throughflow, ITF).
- Oceanic heat and freshwater fluxes (by ITF) affect atmosphere-ocean coupling with potential impacts on the ENSO and monsoon phenomena (Webster 1998).
- The uncertainty of the size of ITF is the dominant source of error in the heat and freshwater budget analyses for the Pacific (Wijffels et al., 2001) and Indian Oceans. (Robbins and Toole, 1997)

The Indonesian seas

- The Indonesian Seas provide more than a complex array of seas through which the ITF flow. The ITF water (Pacific water) is altered by air-sea flux of heat and freshwater, by (tidal) mixing, by upwelling/downwelling due to seasonal divergence/convergence pattern of surface water.

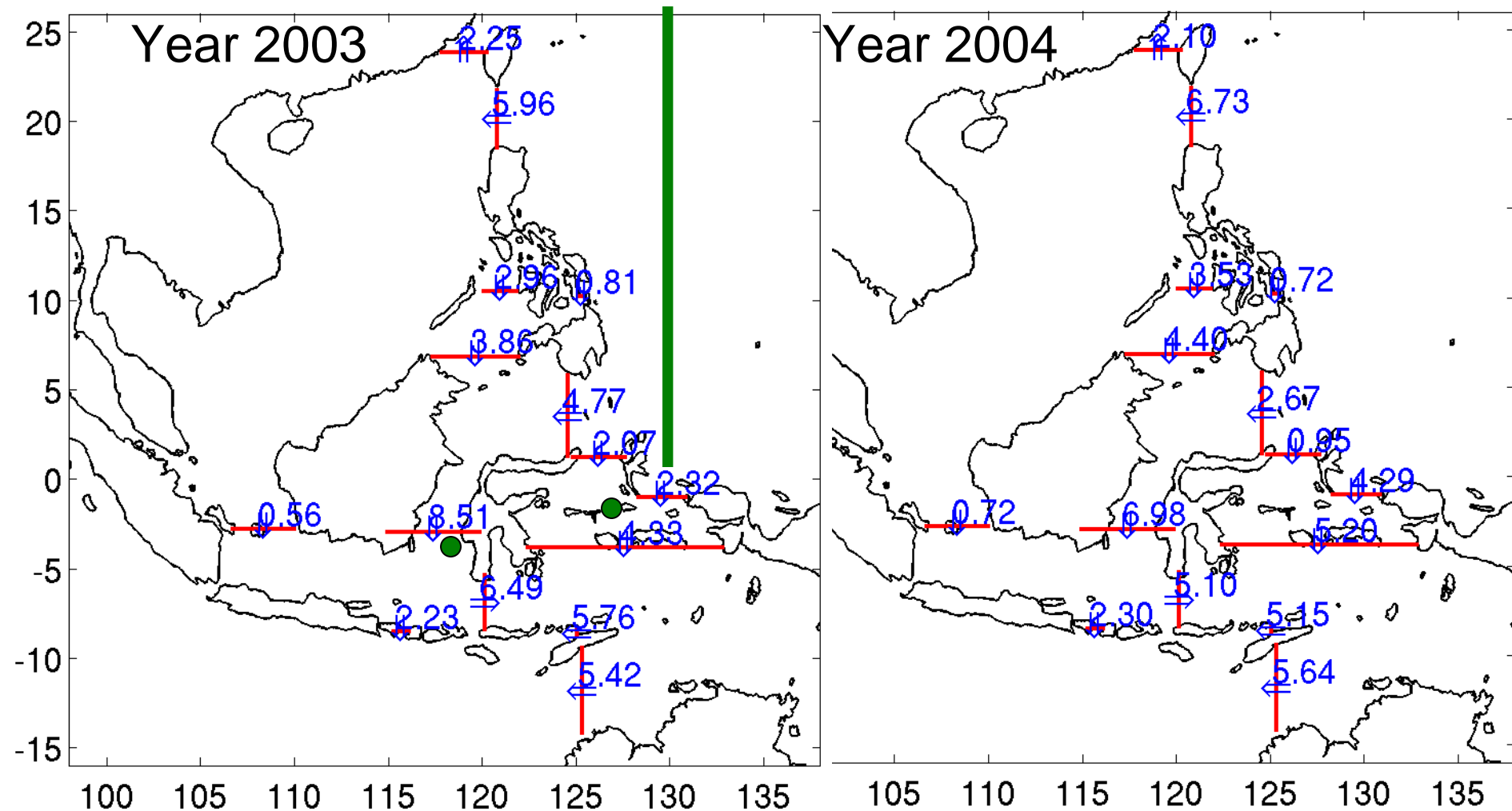


The observed ITF



Schematic of the Indonesian through pathway, Sprintall et al., 2004. EOS.

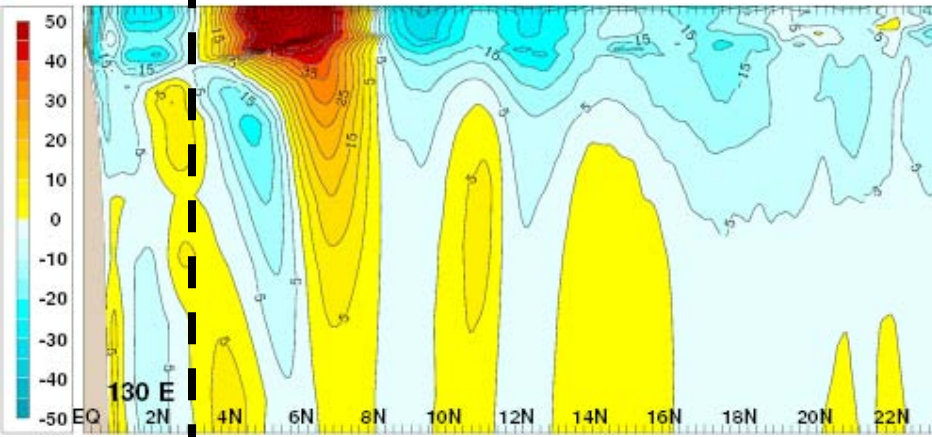
Mean ITF transport in GLBa0.08



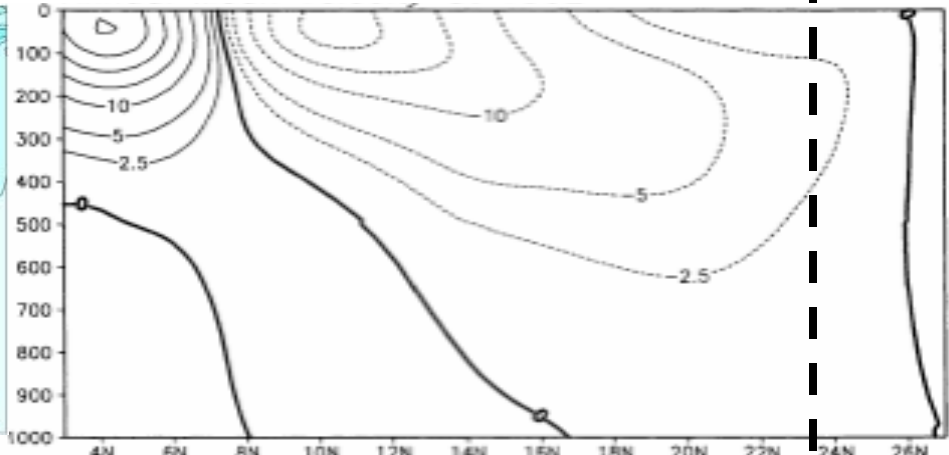
Simulated ITF volume transport (one-year mean) through various passages

At 130°E in Pacific Ocean

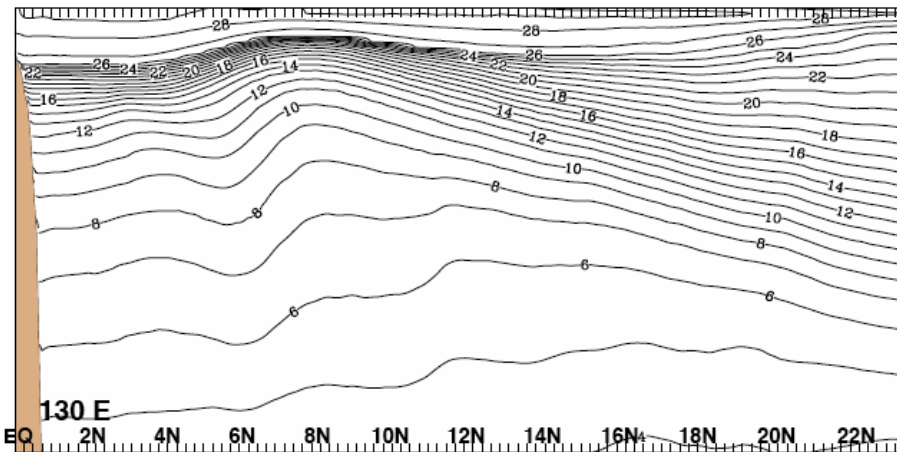
Model (annual mean)



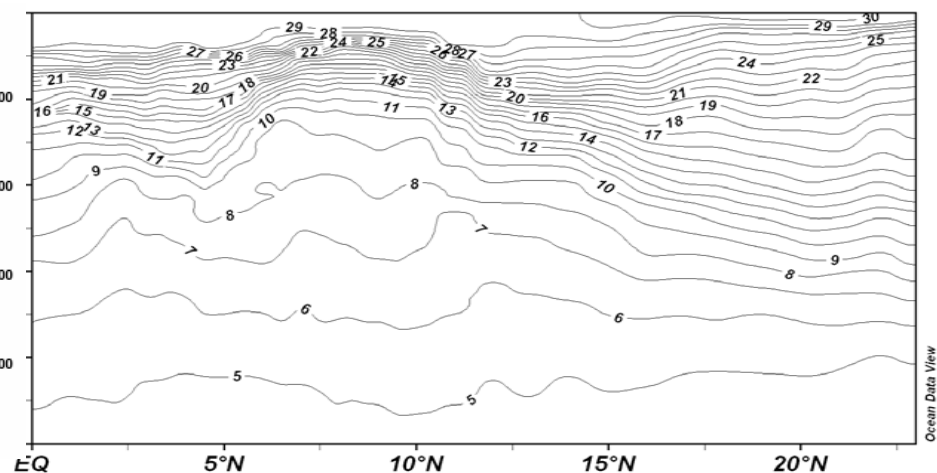
Qu and Lukas, 2003 JPO



Model (annual mean)

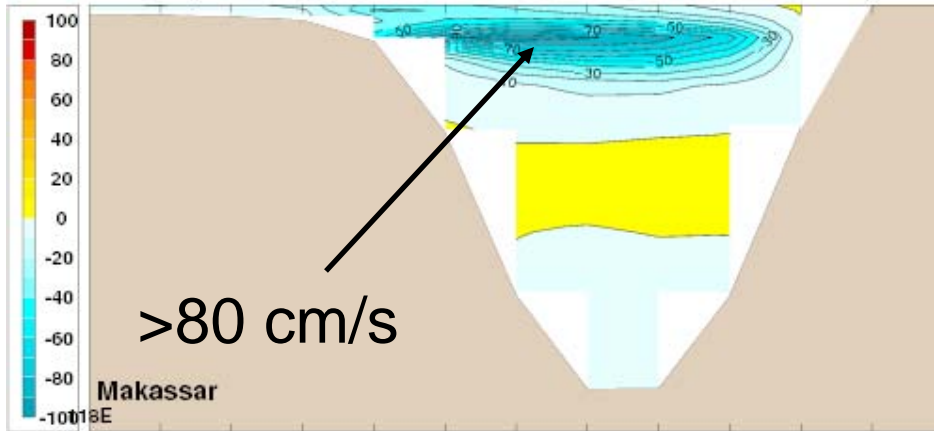


CTD WOCE (P8 Jun/1996)

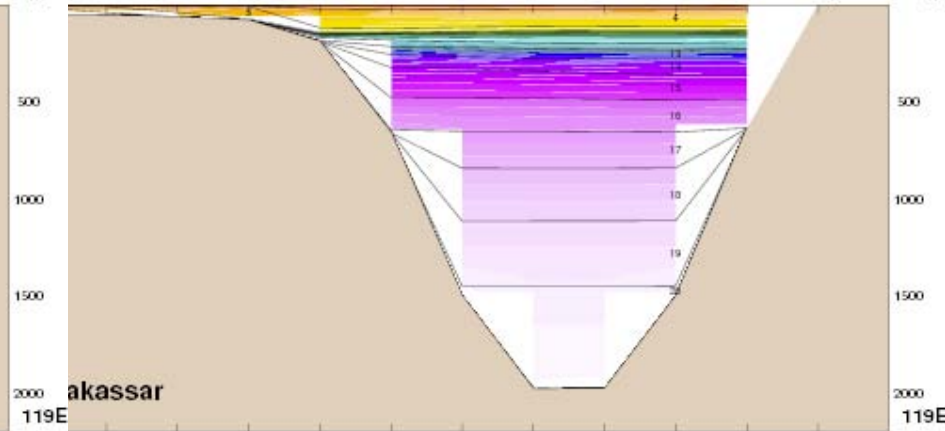


Makassar St. and Lifamatola Pa.

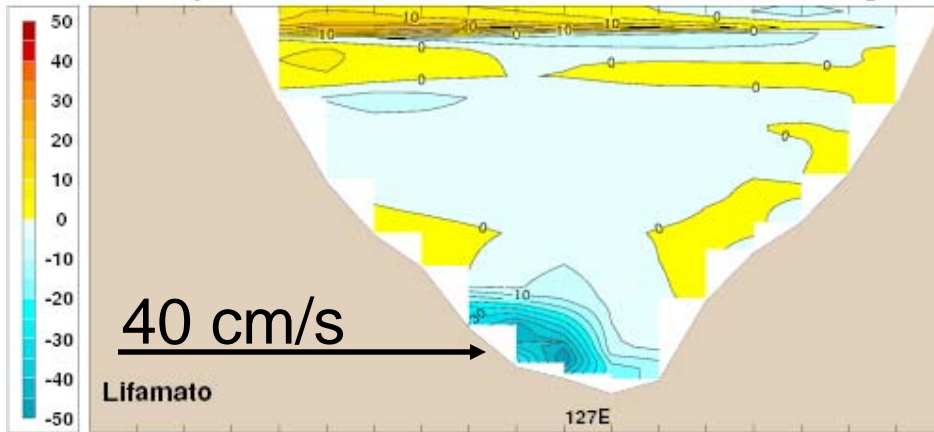
v-velocity zonal sec. 3.20s mean: 2003.00-2004.00 [05.8H]



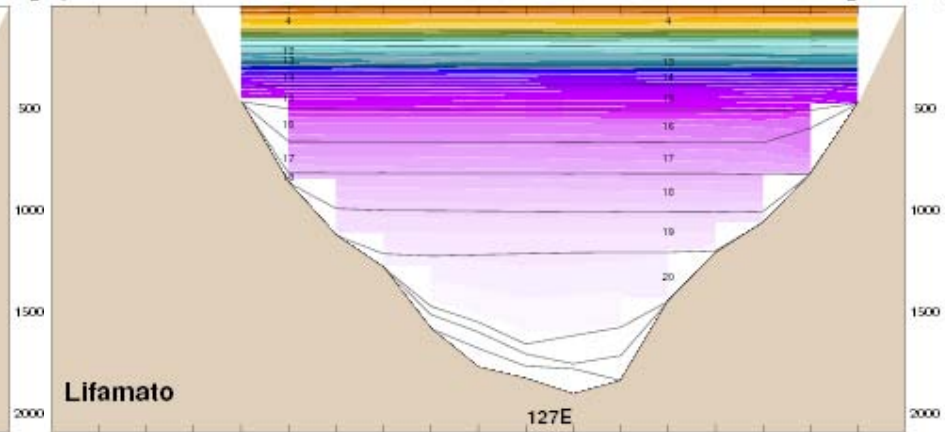
temperature zonal sec. 3.20s mean: 2003.00-2004.00 [05.8H]



v-velocity zonal sec. 1.84s mean: 2003.00-2004.00 [05.8H]



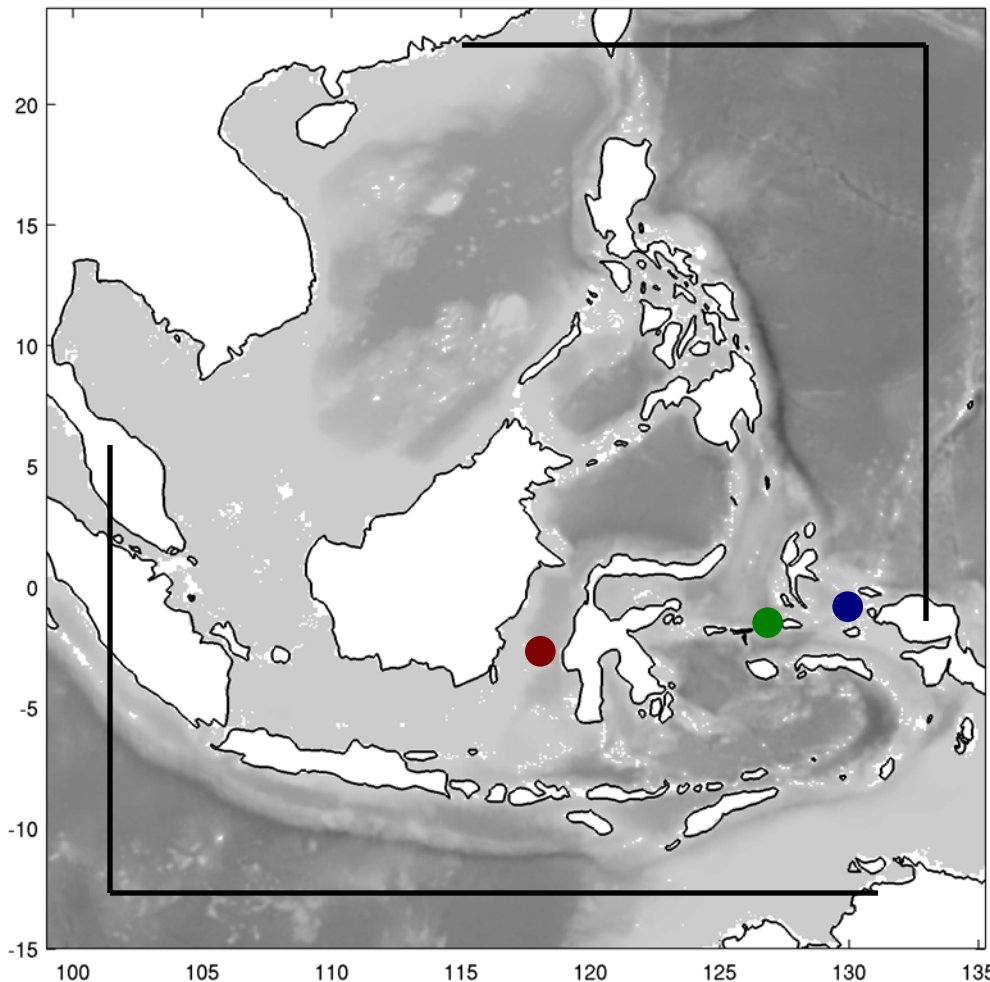
temperature zonal sec. 1.84s mean: 2003.00-2004.00 [05.8H]



~25 cm/s overflow (with strong Fortnightly tide) measured at 300m above the Lifamatola Sill by V. Aken in INSTANT

Nest experiment

- A subset of the GLBa0.08 experiment with interannual air-sea forcing (year 2003).



- 10-grid buffer zone near all 4 boundaries, with e-folding time of:

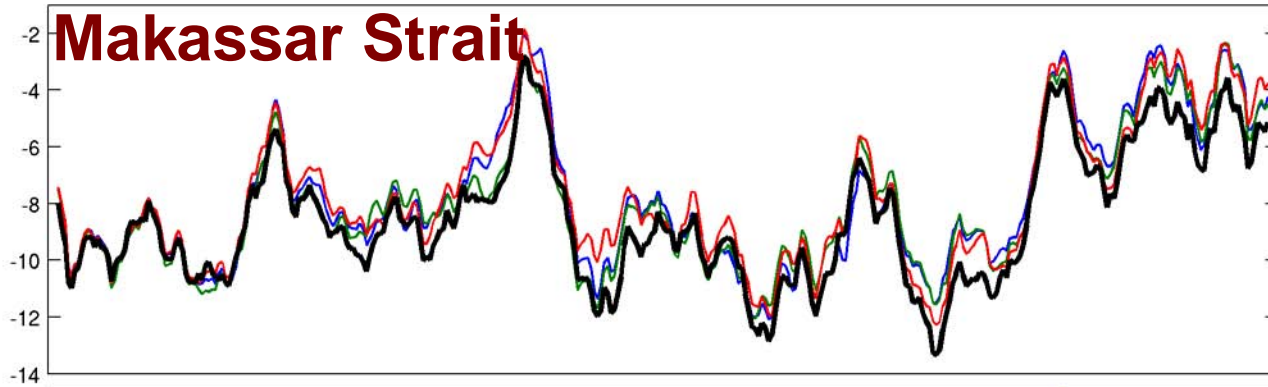
ITF1: 0.2 -2 day

ITF2: 0.1 -1 day

ITF3: 0.05-0.5 day

- **Makassar Strait**
- **Lifamatola Passage**
- **Halmahera-New Guinea**

Transport as function of time

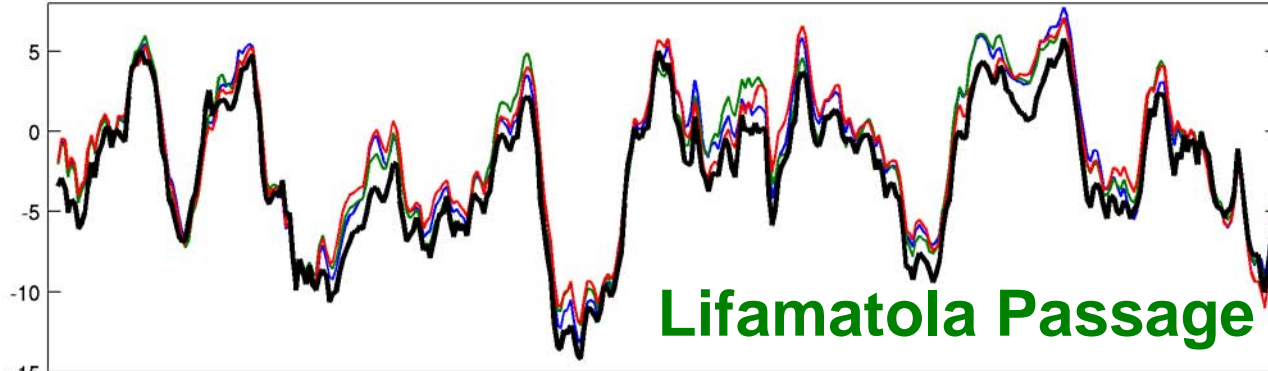


ITF1: -7.33 Sv

ITF2: -7.85 Sv

ITF3: -7.99 Sv

GLB: -8.51 Sv

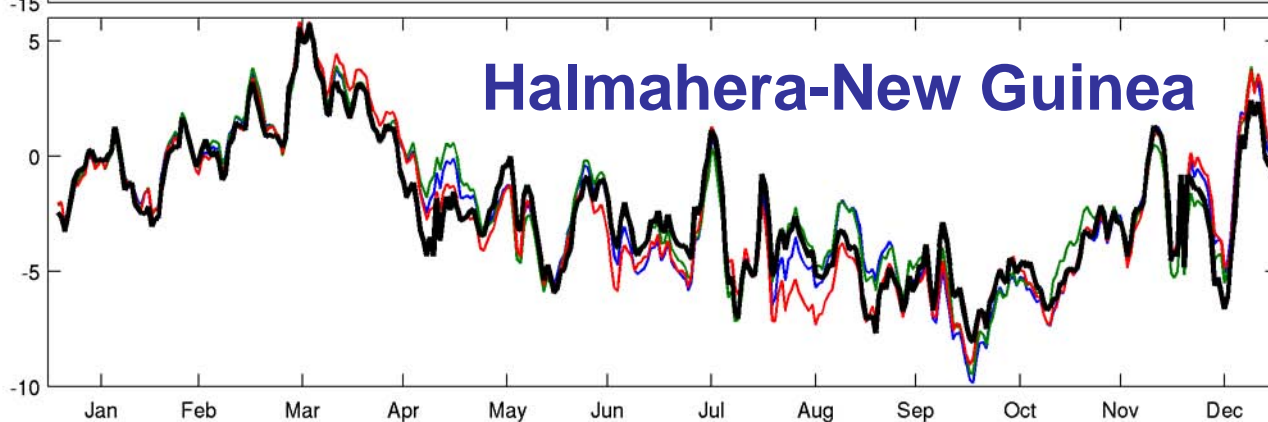


ITF1: -1.40 Sv

ITF2: -1.57 Sv

ITF3: -1.54 Sv

GLB: -2.69 Sv



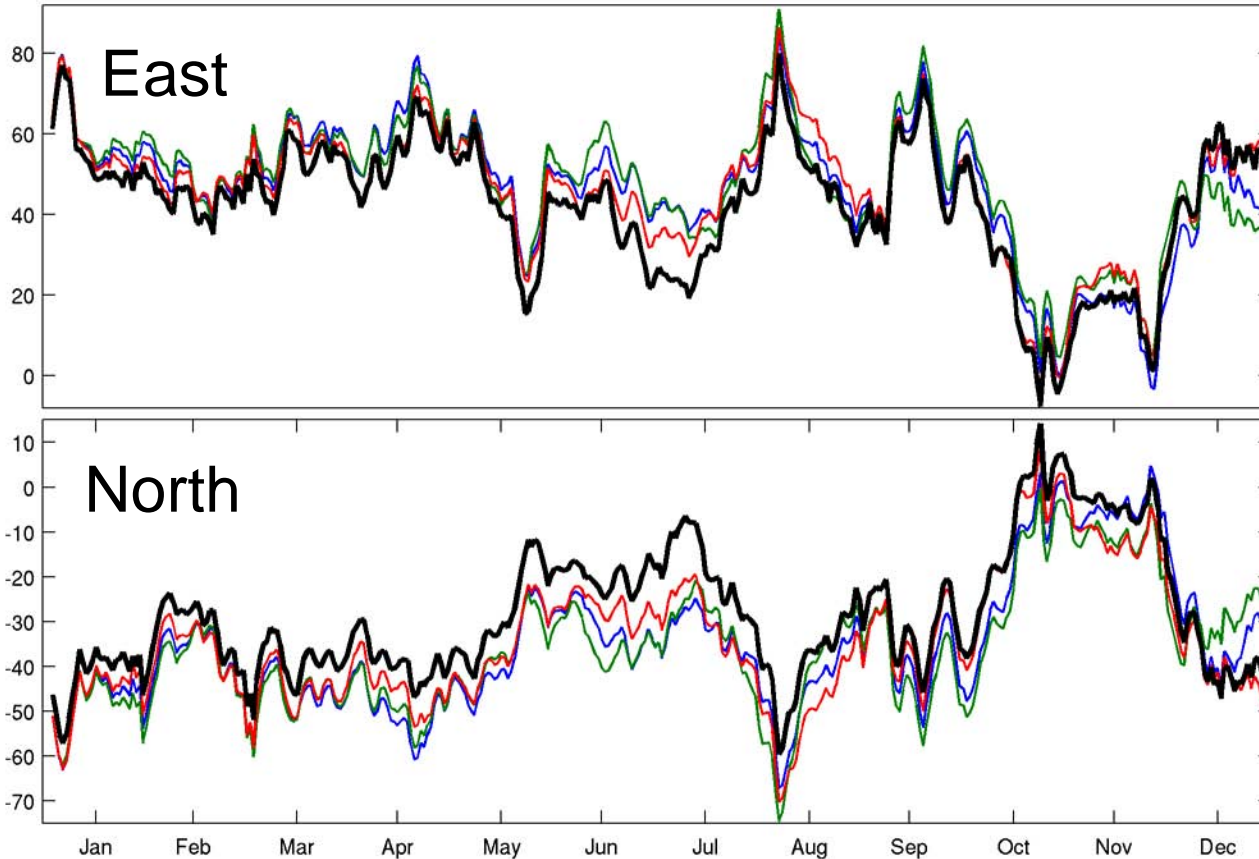
ITF1: -2.46 Sv

ITF2: -2.30 Sv

ITF3: -2.14 Sv

GLB: -2.32 Sv

Near east/north boundary

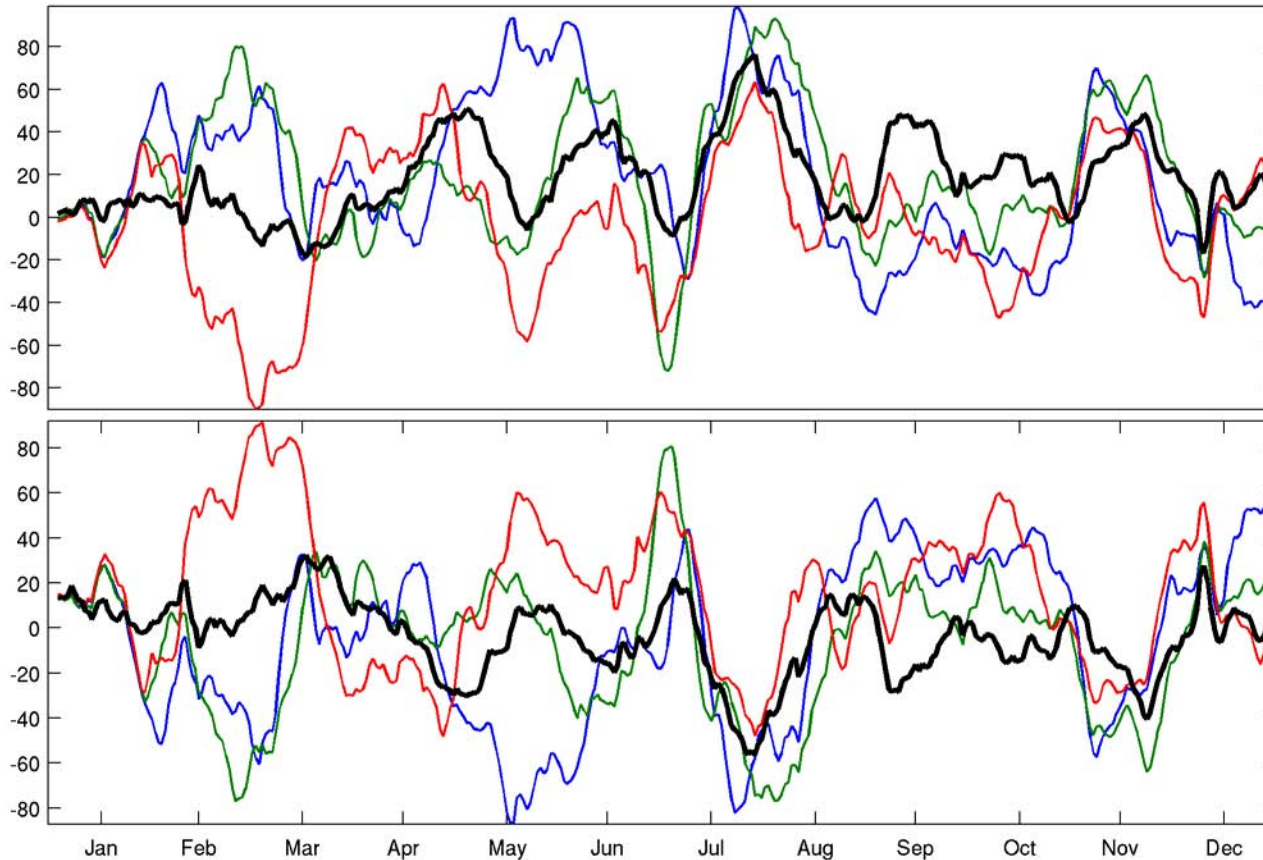


ITF1: 46.20 Sv
ITF2: 47.00 Sv
ITF3: 48.16 Sv
GLB: 42.28 Sv

ITF1: -34.60 Sv
ITF2: -35.26 Sv
ITF3: -36.39 Sv
GLB: -28.35 Sv

Q: What causes this difference? Is it “natural”?

Near west/south boundary

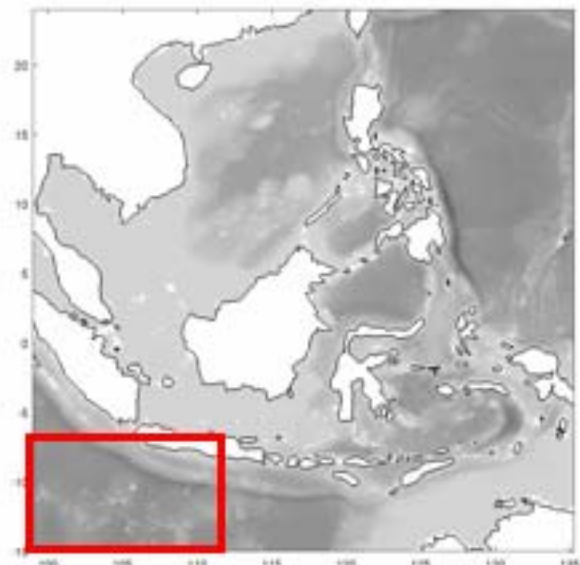
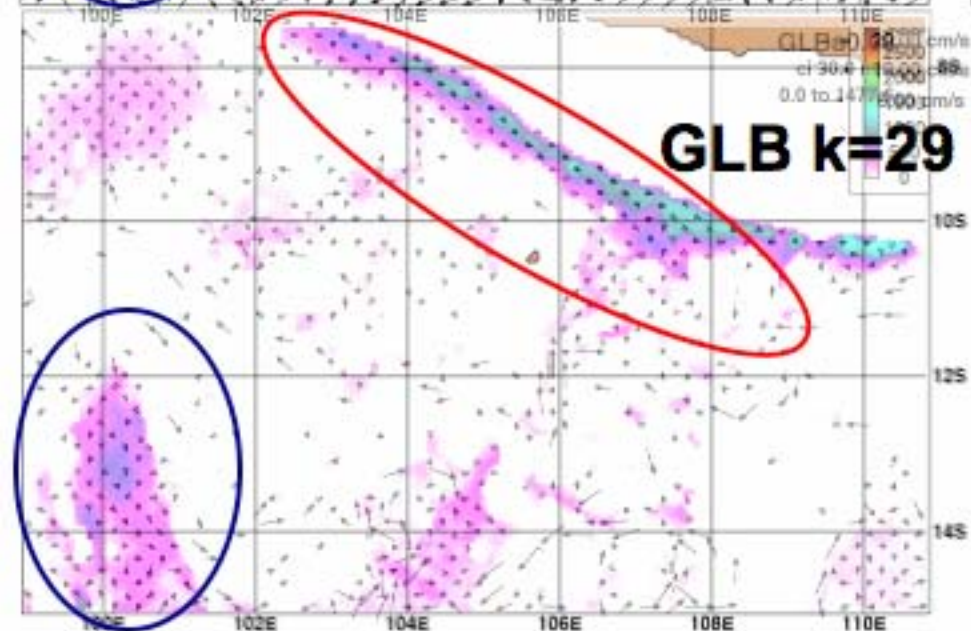
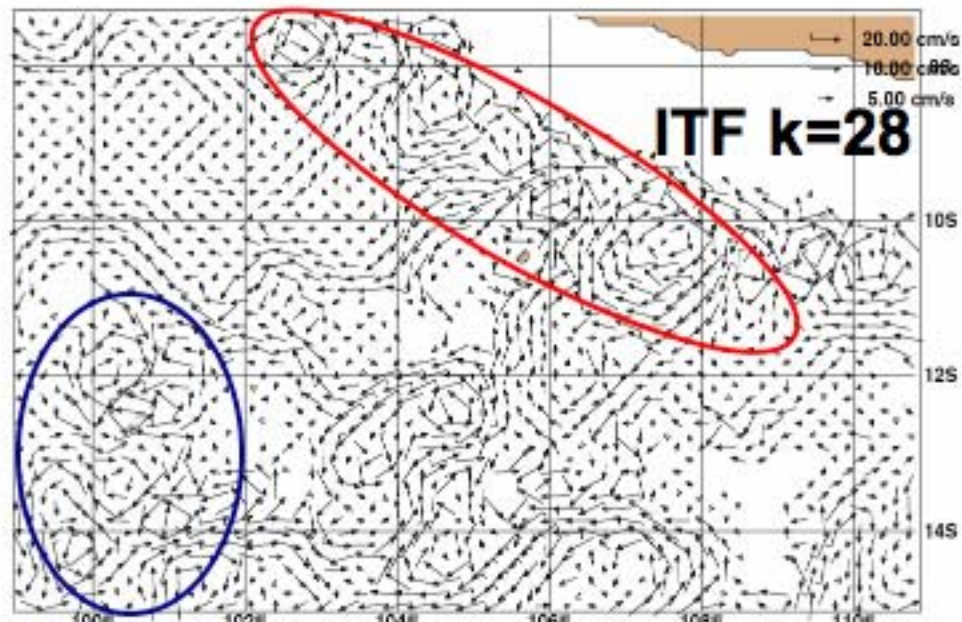
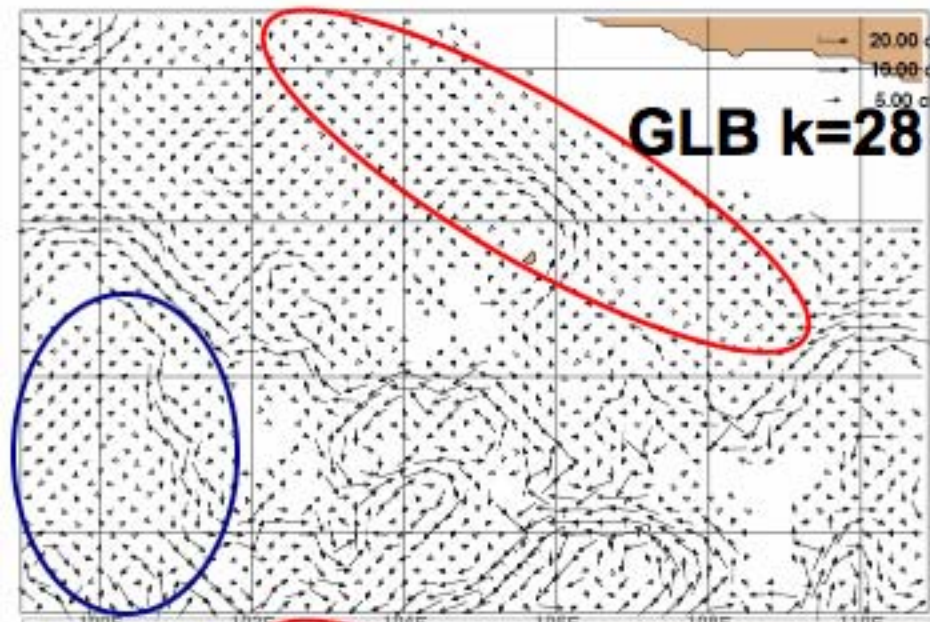


ITF1: -2.84 Sv
ITF2: 18.15 Sv
ITF3: 19.09 Sv
GLB: 18.36 Sv

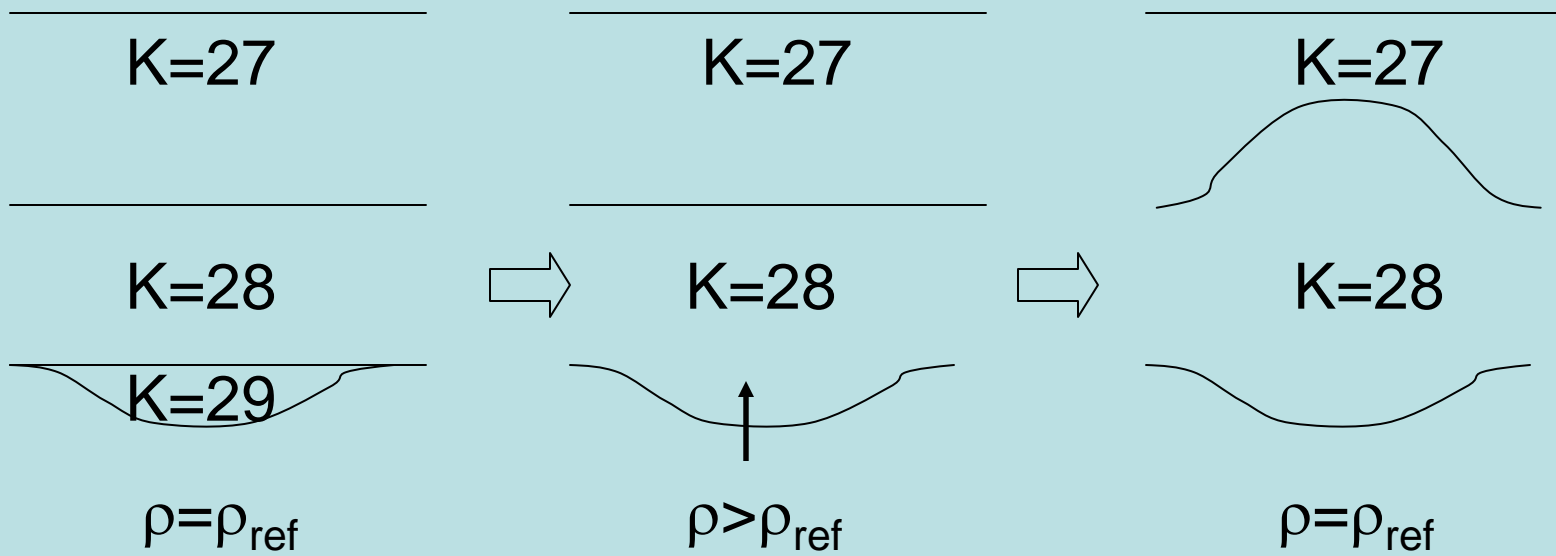
ITF1: 15.04 Sv
ITF2: -5.83 Sv
ITF3: -6.72 Sv
GLB: -3.73 Sv

Q: why the west/south boundary are so different from the east/north boundary?

Bottom layers



Does this happen when excluding layer 29?



Seasonal development of a suite of eddies identified by satellite altimeters on TOPEX/Poseidon (CSIRO Marine Research group)

Current southern boundary

Future experiments

- With constant (annual mean) boundary forcing and different air-sea forcing (i.e., annual mean, monthly mean, real-time high frequency)
- With seasonal cycle of boundary forcing and different air-sea forcing.