



Verification of NCODA Assimilation in the HYCOM 1/25th degree Gulf of Mexico Domain

James A. Cummings

Ole Martin Smedstad

***Naval Research Laboratory
Planning Systems Incorporated***

10th HYCOM Consortium Meeting

COAPS, Florida State University, 7-9 November 2006

Report Documentation Page

Form Approved
OMB No. 0704-0188

Public reporting burden for the collection of information is estimated to average 1 hour per response, including the time for reviewing instructions, searching existing data sources, gathering and maintaining the data needed, and completing and reviewing the collection of information. Send comments regarding this burden estimate or any other aspect of this collection of information, including suggestions for reducing this burden, to Washington Headquarters Services, Directorate for Information Operations and Reports, 1215 Jefferson Davis Highway, Suite 1204, Arlington VA 22202-4302. Respondents should be aware that notwithstanding any other provision of law, no person shall be subject to a penalty for failing to comply with a collection of information if it does not display a currently valid OMB control number.

1. REPORT DATE NOV 2006	2. REPORT TYPE	3. DATES COVERED 00-00-2006 to 00-00-2006			
4. TITLE AND SUBTITLE Verification of NCODA Assimilation in the HYCOM 1/25th degree Gulf of Mexico Domain		5a. CONTRACT NUMBER			
		5b. GRANT NUMBER			
		5c. PROGRAM ELEMENT NUMBER			
6. AUTHOR(S)		5d. PROJECT NUMBER			
		5e. TASK NUMBER			
		5f. WORK UNIT NUMBER			
7. PERFORMING ORGANIZATION NAME(S) AND ADDRESS(ES) Naval Research Laboratory, Stennis Space Center, MS, 39529		8. PERFORMING ORGANIZATION REPORT NUMBER			
9. SPONSORING/MONITORING AGENCY NAME(S) AND ADDRESS(ES)		10. SPONSOR/MONITOR'S ACRONYM(S)			
		11. SPONSOR/MONITOR'S REPORT NUMBER(S)			
12. DISTRIBUTION/AVAILABILITY STATEMENT Approved for public release; distribution unlimited					
13. SUPPLEMENTARY NOTES					
14. ABSTRACT					
15. SUBJECT TERMS					
16. SECURITY CLASSIFICATION OF:			17. LIMITATION OF ABSTRACT Same as Report (SAR)	18. NUMBER OF PAGES 19	19a. NAME OF RESPONSIBLE PERSON
a. REPORT unclassified	b. ABSTRACT unclassified	c. THIS PAGE unclassified			



Data Assimilation Intercomparison Study

Planned at December 2005 HYCOM Meeting (RSMAS)

Forecast Model: HYCOM

Domain: Gulf of Mexico, $1/25^\circ$ resolution (~ 3.5 km)

Assimilation Time Period: 2004 – 2005

Atmospheric Forcing: 1° NOGAPS

Nesting: climatological boundary conditions (from $1/12^\circ$ Atlantic)

River Inputs: monthly river flow

HYCOM Assimilation Systems

TOPAZ, ENKF (NRL), MVOI (NCODA), ROIF, SEEK, OI (NCEP)

Control Run

Free run model from 2003 – 2006 forced by 1° NOGAPS



Data Assimilation Intercomparison Study

Intercomparison Criteria – Forecasting System

Skill of forecasts as compared to free run model

Skill of nowcasts as compared to free run model

Performance measures of assimilation system

Skill of assimilative lateral boundary conditions for downscaling

Prediction of non-assimilated (independent) observations

Prediction Loop Current and Loop Current eddy interactions

Intercomparison Criteria – Oceanographic Knowledge

Water masses at all depths

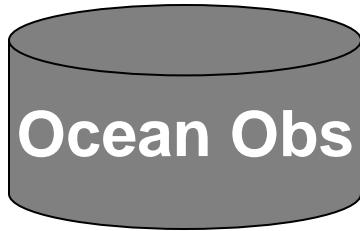
Deep circulation

Barotropic Stream Functions

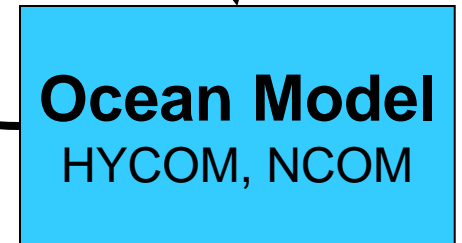
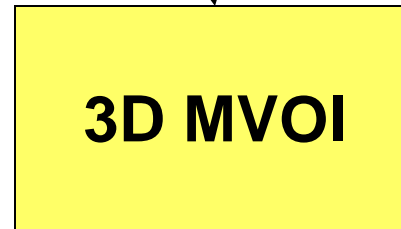
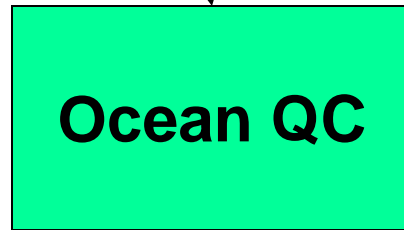
Mass and velocity structure in Yucatan and Florida Straits

NCODA System Overview

Sequential Incremental Update Cycle
Analysis-Forecast-Analysis



SST: Ship (ERI, Bucket, Hull Contact), Buoy (Fixed, Drifting), AVHRR (GAC,LAC), GOES, AATSR, MSG, AMSR-E
Temp/Salt Profiles: XBT, CTD, Buoy (Fixed, Drifting), Argo Float, Gliders
SSH: Altimeter, T/S profiles
Sea Ice: SSM/I



Forecast Fields
Prediction Errors

Model forecast fields and prediction errors are used in the QC of newly received ocean observations

Innovations

Increments

First Guess



NCODA Implementation Data Assimilation Intercomparison Study

Observations

SST - satellite (AVHRR GAC), ship, fixed and drifting buoy

Profile – Argo Float, TESAC, XBT

Altimeter – Jason, GFO, ENVISAT

Synthetics – temperature/salinity profiles from assimilation of altimeter SSH data using Cooper-Haines vertical projection technique

Assimilation

24-hour update cycle – 2 Sep 2003 through 1 June 2006

No forecasts beyond update cycle interval

Incremental Analysis Update (IAU) procedure - increments inserted over 240 model time steps (first 12 hours of forecast)

Verification Statistics – computed as daily averages by depth

OmA – observation minus analysis (residuals)

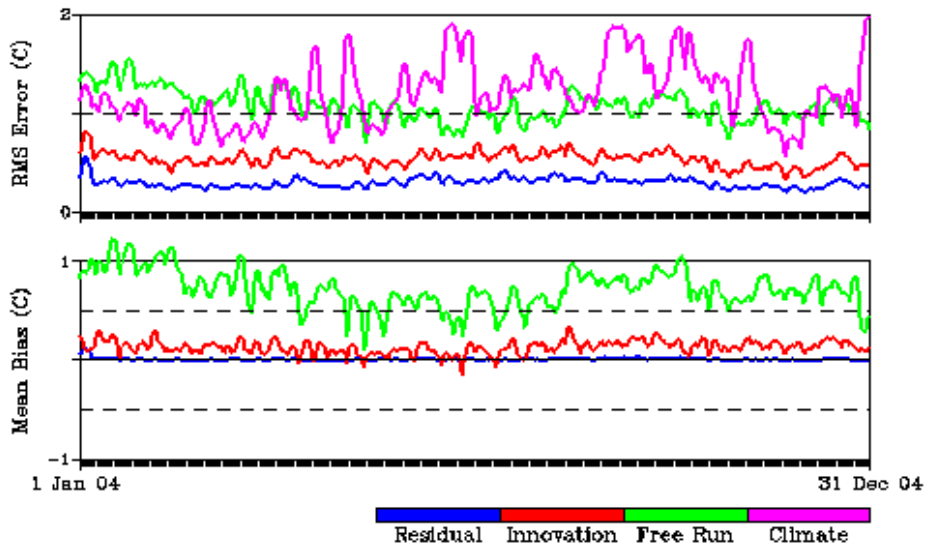
OmF – observation minus 24 forecast (innovations)

OmM – observation minus free run of model (control)

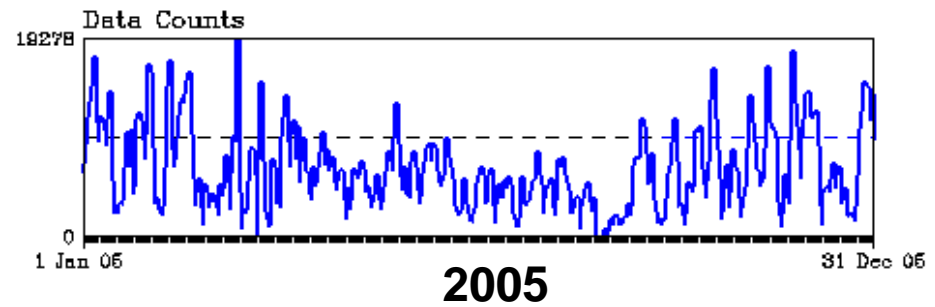
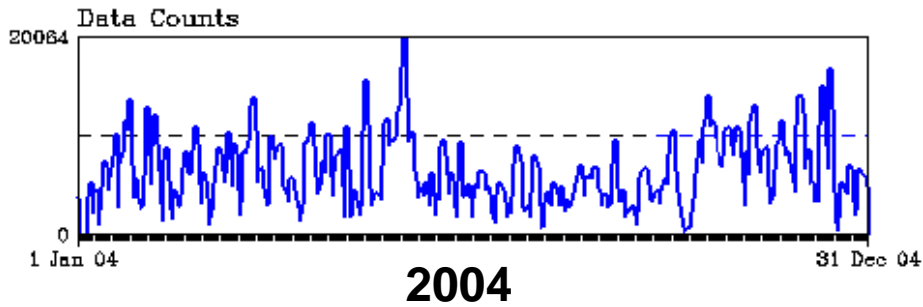
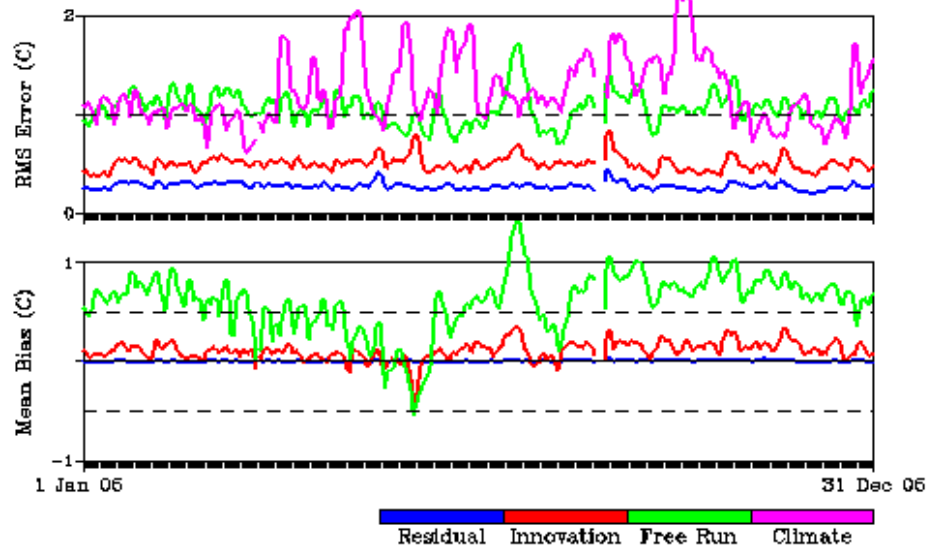
OmC – observation minus climatology (GDEM v3.0)

Surface Temperature Validation

HYCOM 1/25 Gulf of Mexico – Surface Temperature



HYCOM 1/25 Gulf of Mexico – Surface Temperature

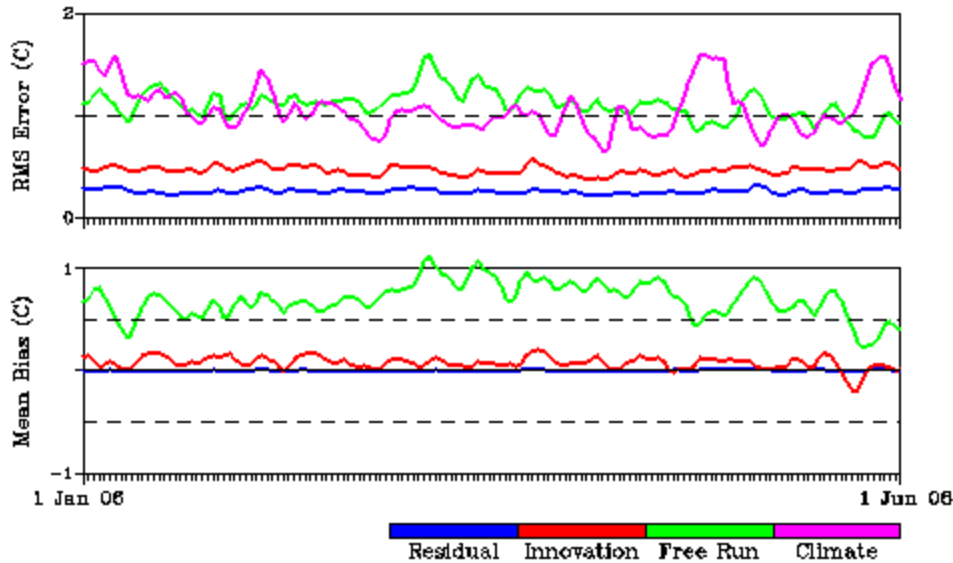


residual error	0.28	bias	0.01 °C
innovation error	0.51	bias	0.13 °C
free run error	1.06	bias	0.71 °C
climate error	1.14		°C

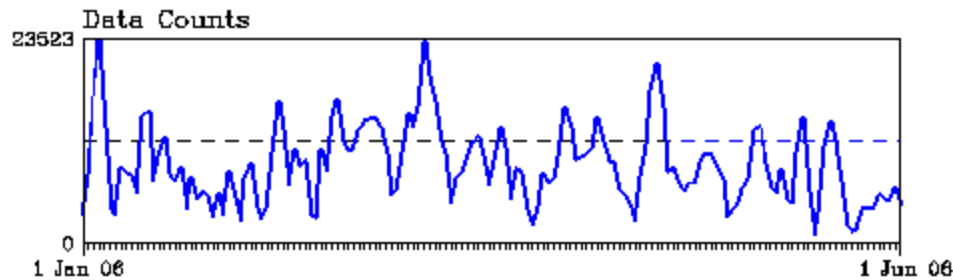
residual error	0.27	bias	0.01 °C
innovation error	0.48	bias	0.10 °C
free run error	1.06	bias	0.58 °C
climate error	1.17		°C

Surface Temperature Validation – Jan to Jun 2006

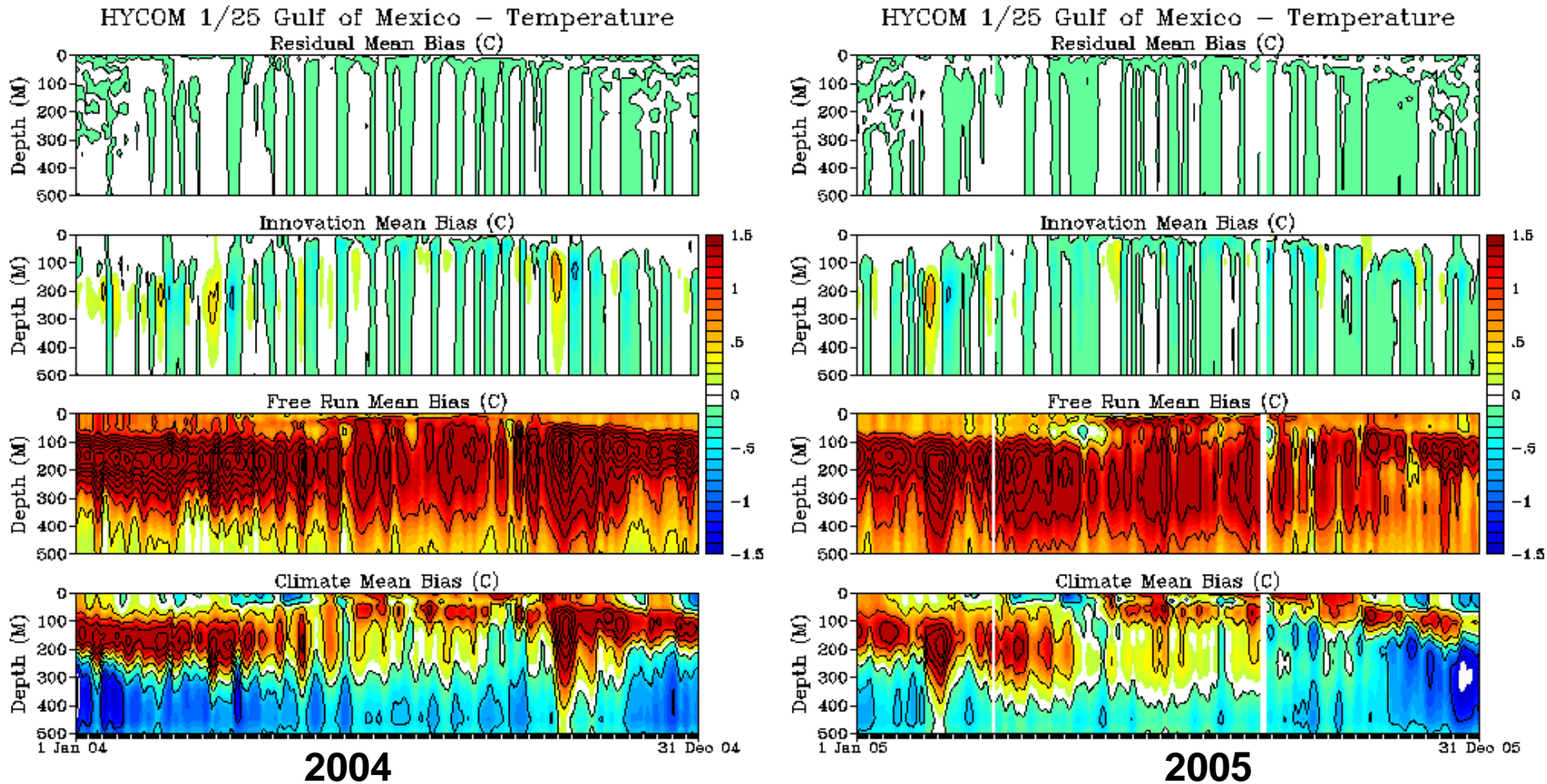
HYCOM 1/25 Gulf of Mexico – Surface Temperature



residual error	0.26	bias 0.01 °C
innovation error	0.46	bias 0.08 °C
free run error	1.15	bias 0.75 °C
climate error	1.04	

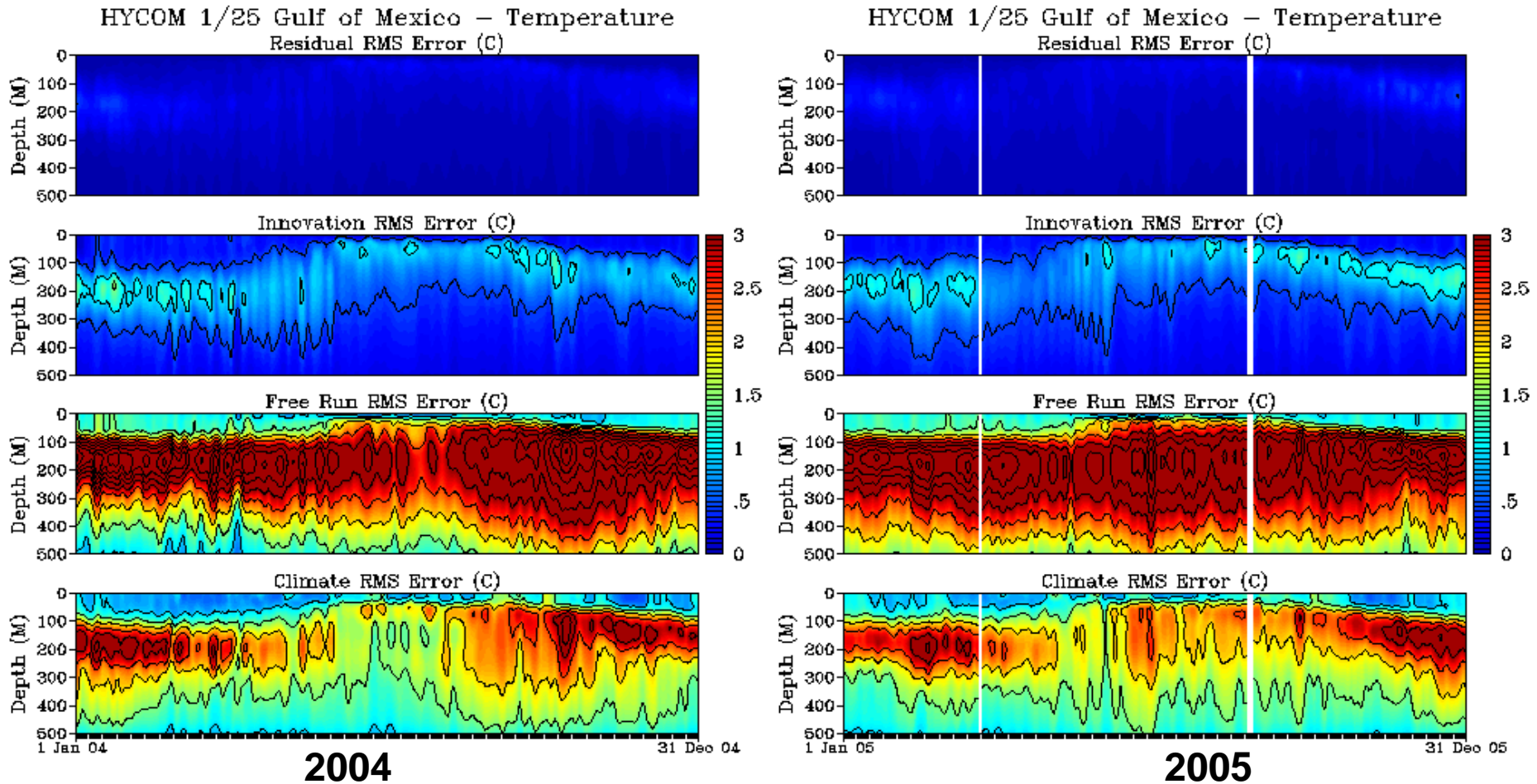


Temperature Validation – Mean Bias



- analysis residuals biased slightly warm ~ 0.08 °C
- 24-hr forecasts from assimilation run essentially unbiased ~ 0.1 °C
- free running model biased very cold ~ 1.0 to >3.0 °C
- observations (synthetics) biased warm and cold relative to climatology

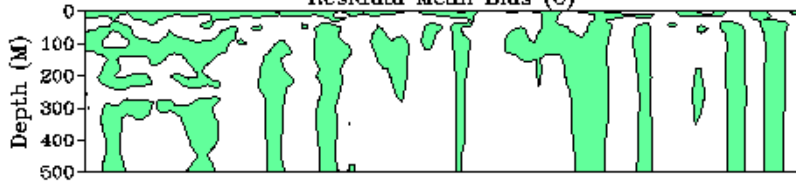
Temperature Validation – RMS Error



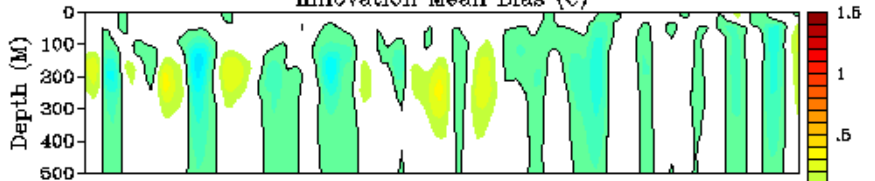
- residual errors very low ~ 0.3 °C
- innovations errors concentrated in thermocline
- free running model errors very large ~ 1.0 to >4.0 °C

Temperature Validation – Jan to Jun 2006

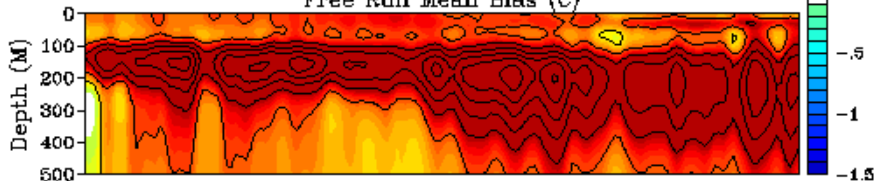
HYCOM 1/25 Gulf of Mexico – Temperature
Residual Mean Bias (C)



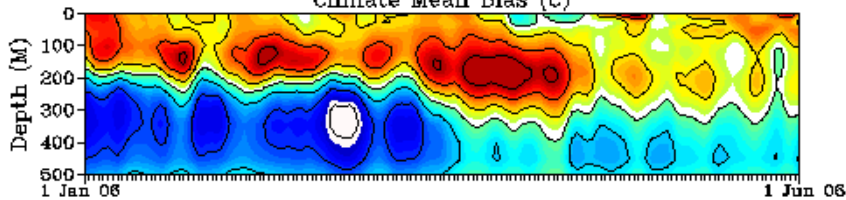
Innovation Mean Bias (C)



Free Run Mean Bias (C)



Climate Mean Bias (C)

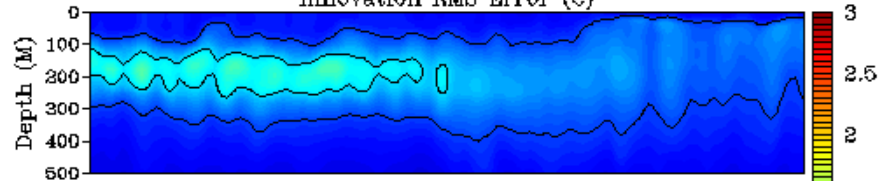


Mean Bias

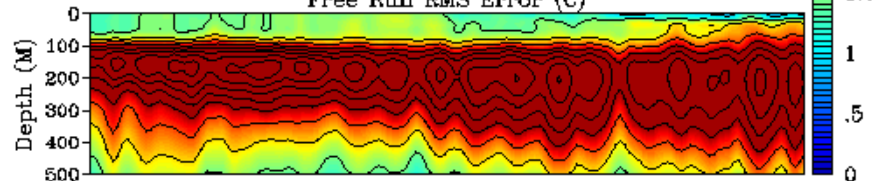
HYCOM 1/25 Gulf of Mexico – Temperature
Residual RMS Error (C)



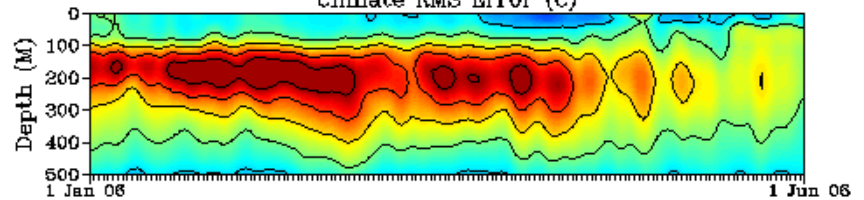
Innovation RMS Error (C)



Free Run RMS Error (C)



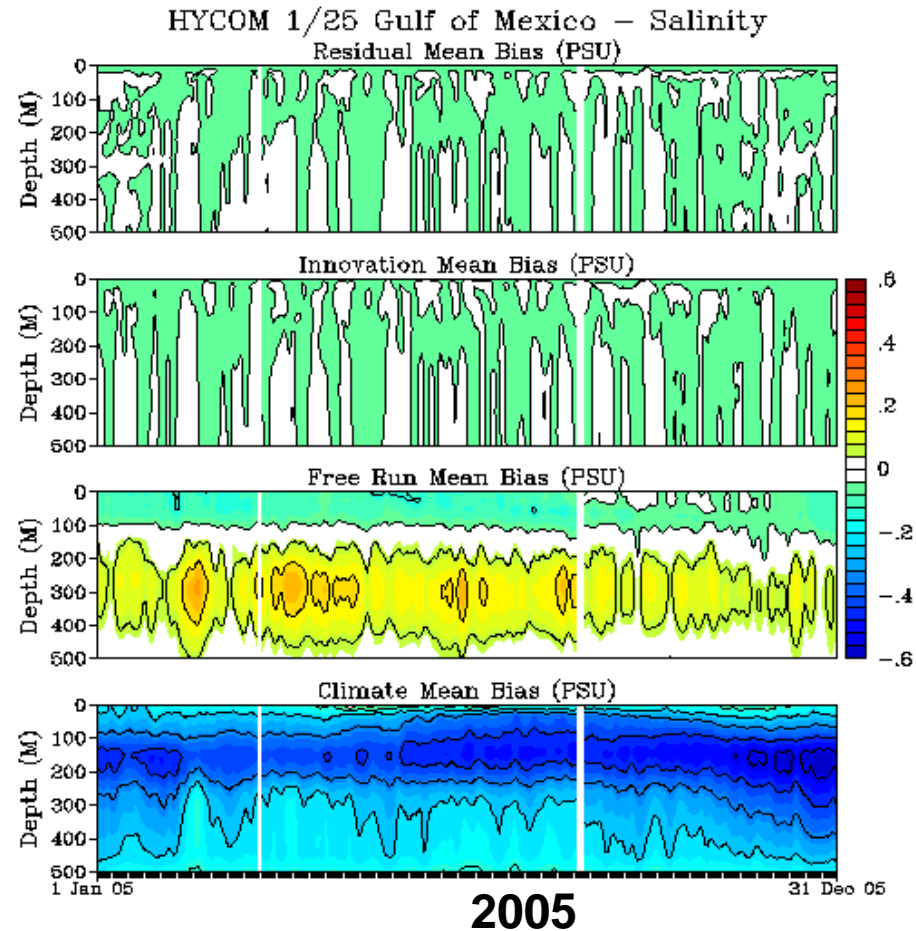
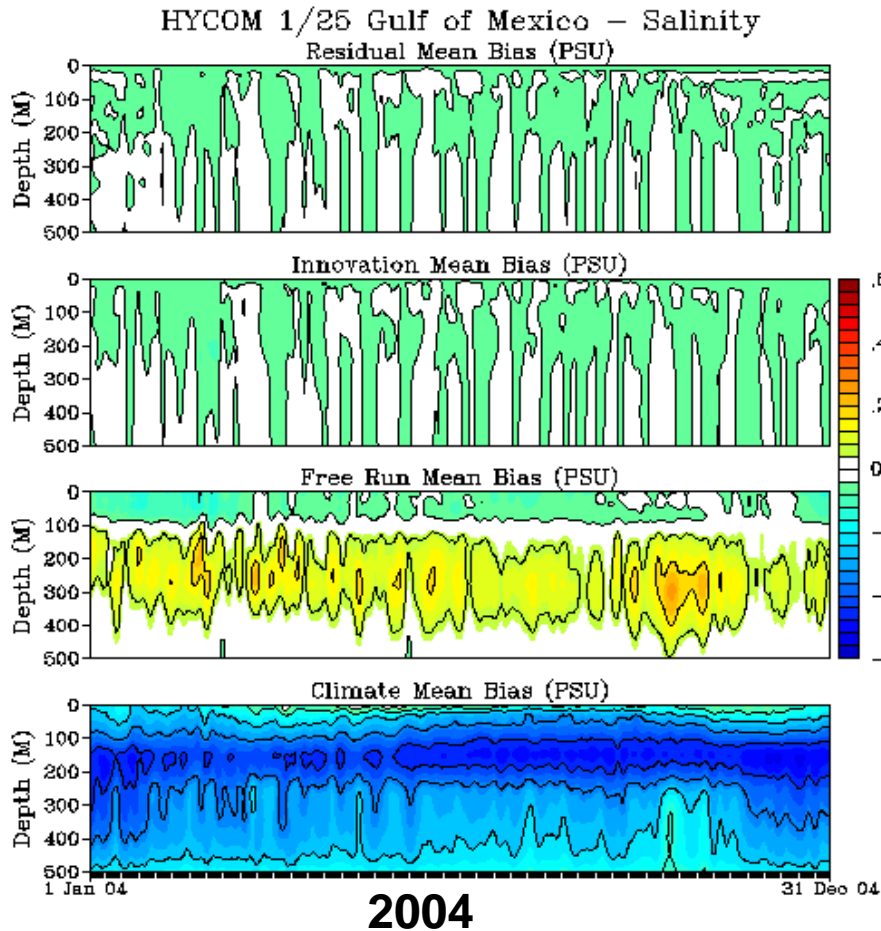
Climate RMS Error (C)



RMS Error

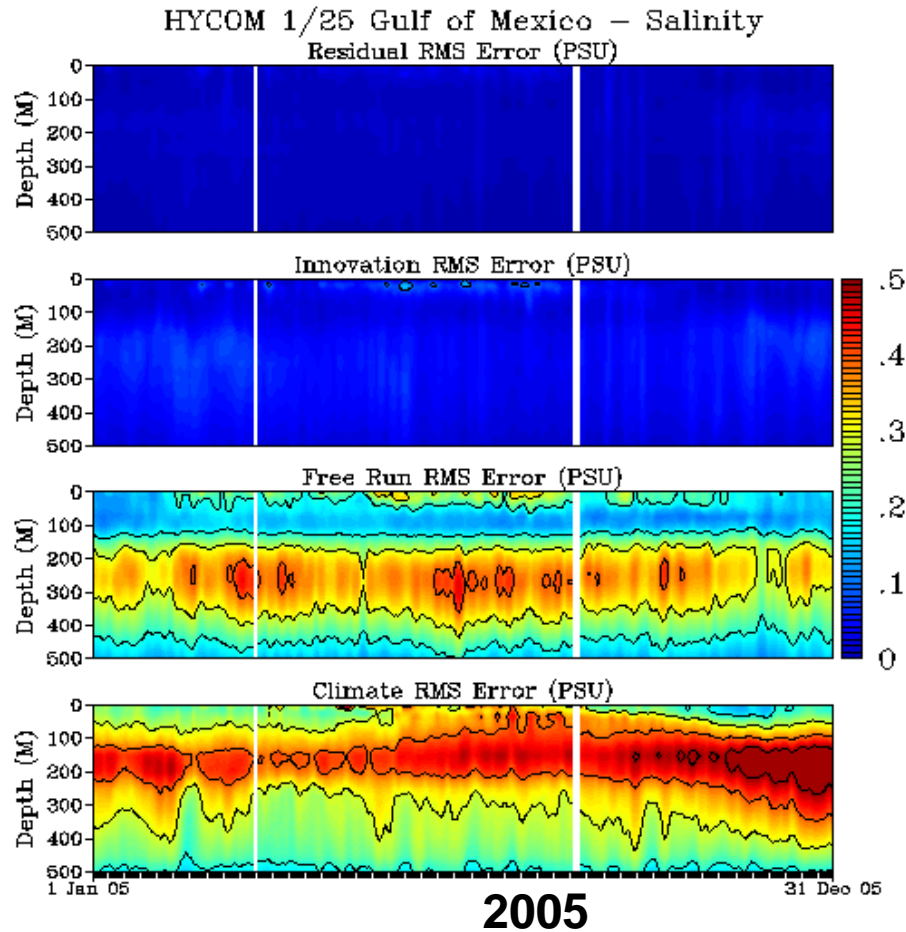
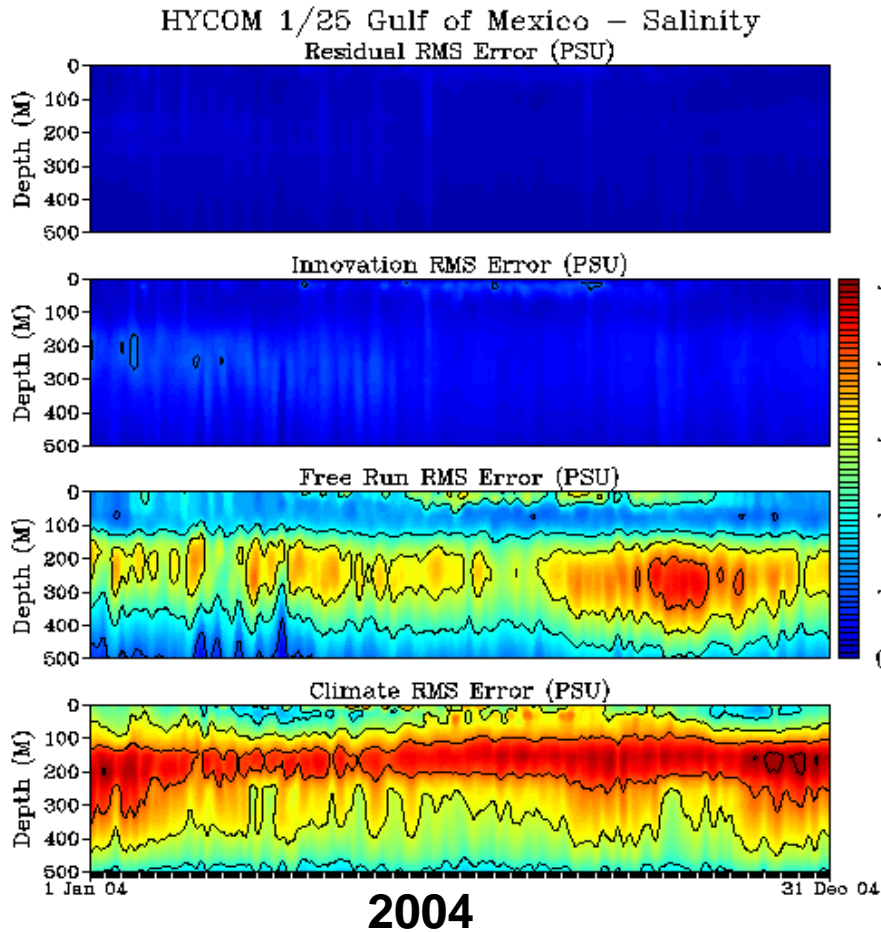
similar error patterns as 2004 and 2005

Salinity Validation – Mean Bias



- residual and innovation salinities biased salty ~ 0.05 PSU
- free running model salinities biased salty at surface (~ 0.05 PSU), fresh at depth (~ 0.2 to 0.3 PSU)
- observations (synthetics) biased fresh relative to climatology

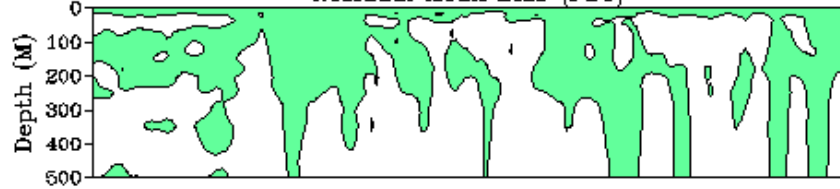
Salinity Validation – RMS Error



- 24-hr forecast RMS errors very low (~ 0.1 PSU)
- free running model RMS errors ~ 0.2 to 0.4 PSU

Salinity Validation – Jan to Jun 2006

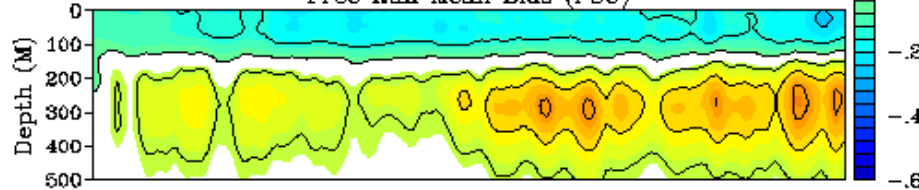
HYCOM 1/25 Gulf of Mexico – Salinity
Residual Mean Bias (PSU)



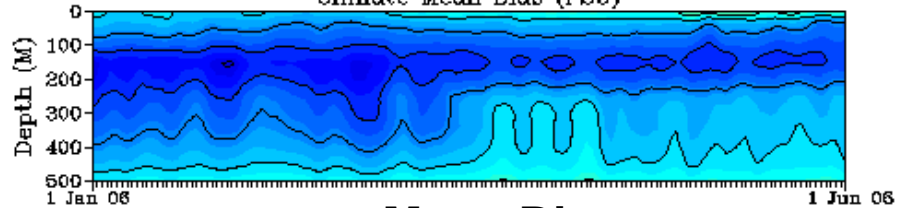
Innovation Mean Bias (PSU)



Free Run Mean Bias (PSU)



Climate Mean Bias (PSU)

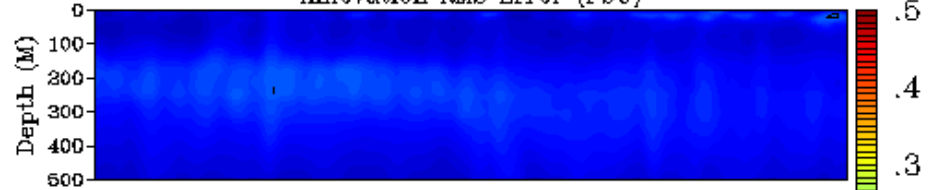


Mean Bias

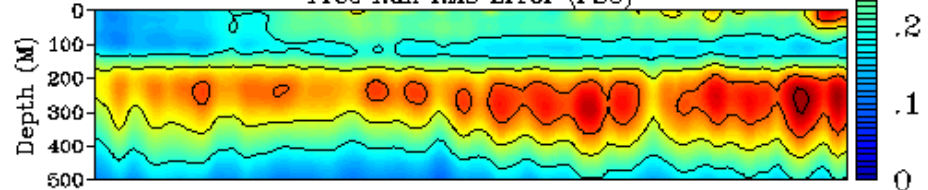
HYCOM 1/25 Gulf of Mexico – Salinity
Residual RMS Error (PSU)



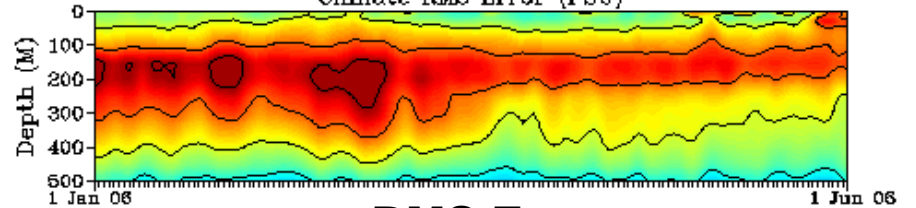
Innovation RMS Error (PSU)



Free Run RMS Error (PSU)



Climate RMS Error (PSU)

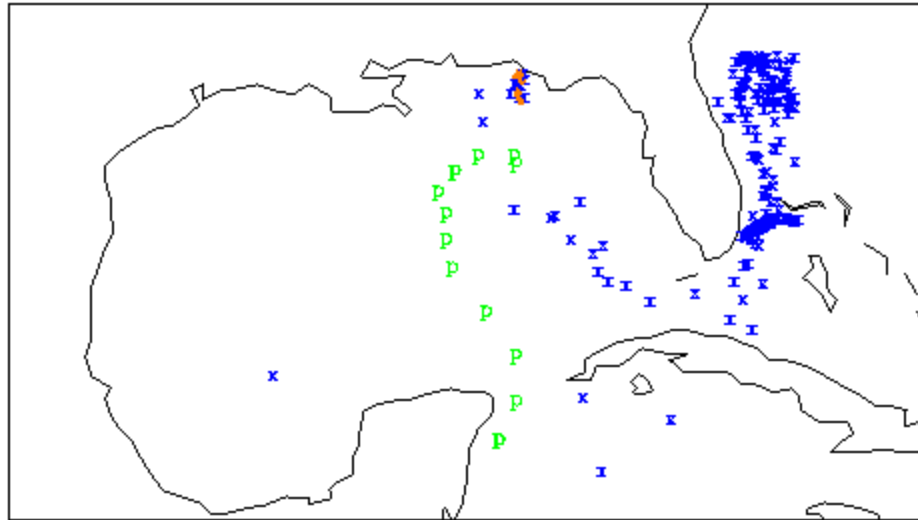


RMS Error

similar error patterns as 2004 and 2005



In Situ Profile Locations January 2004 through June 2006



P – Argo profiling float (13)

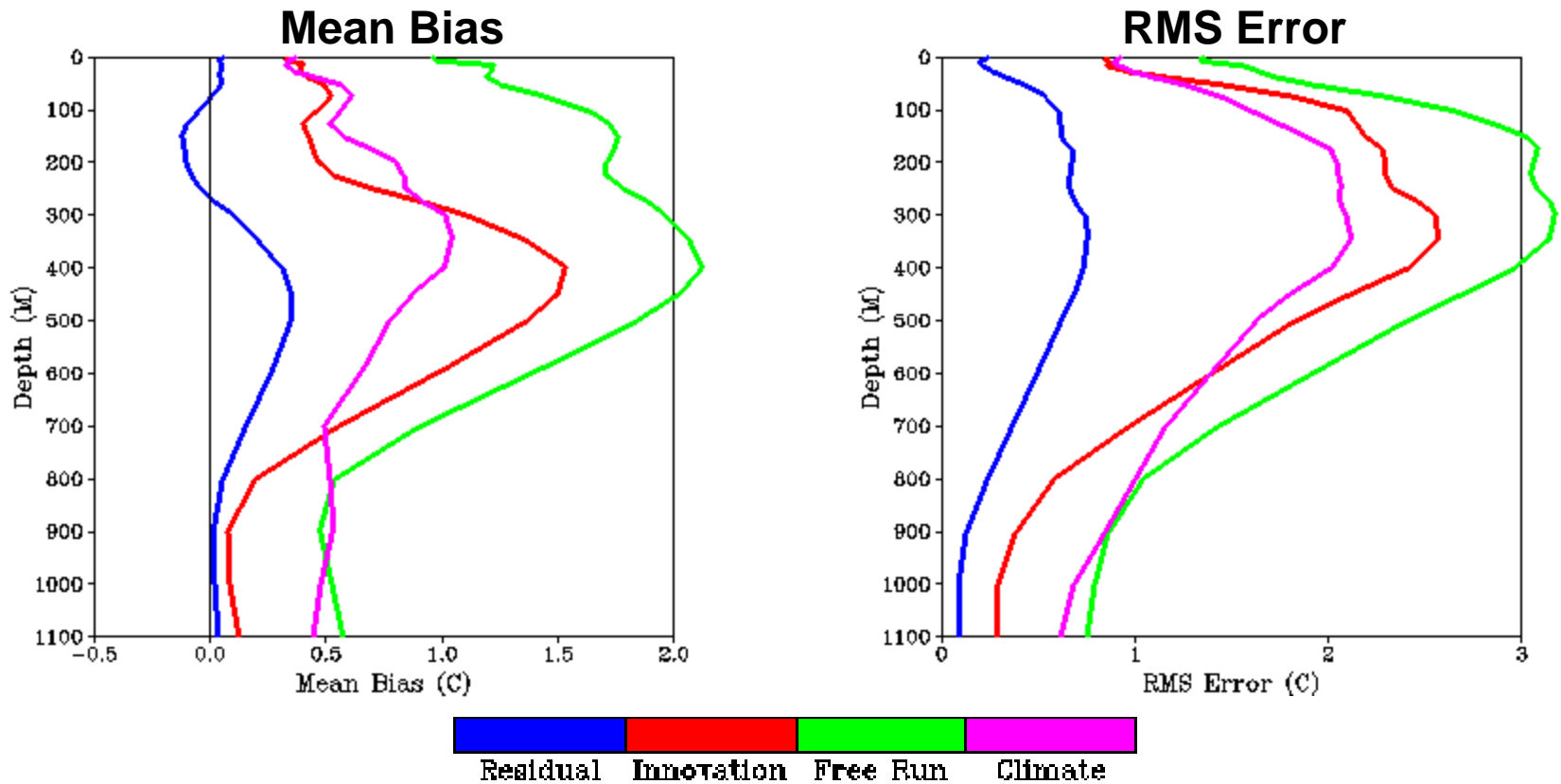
T – TESAC salinity-temperature-depth profile (15)

X – eXpendable BathyThermograph (222)

250 Total !

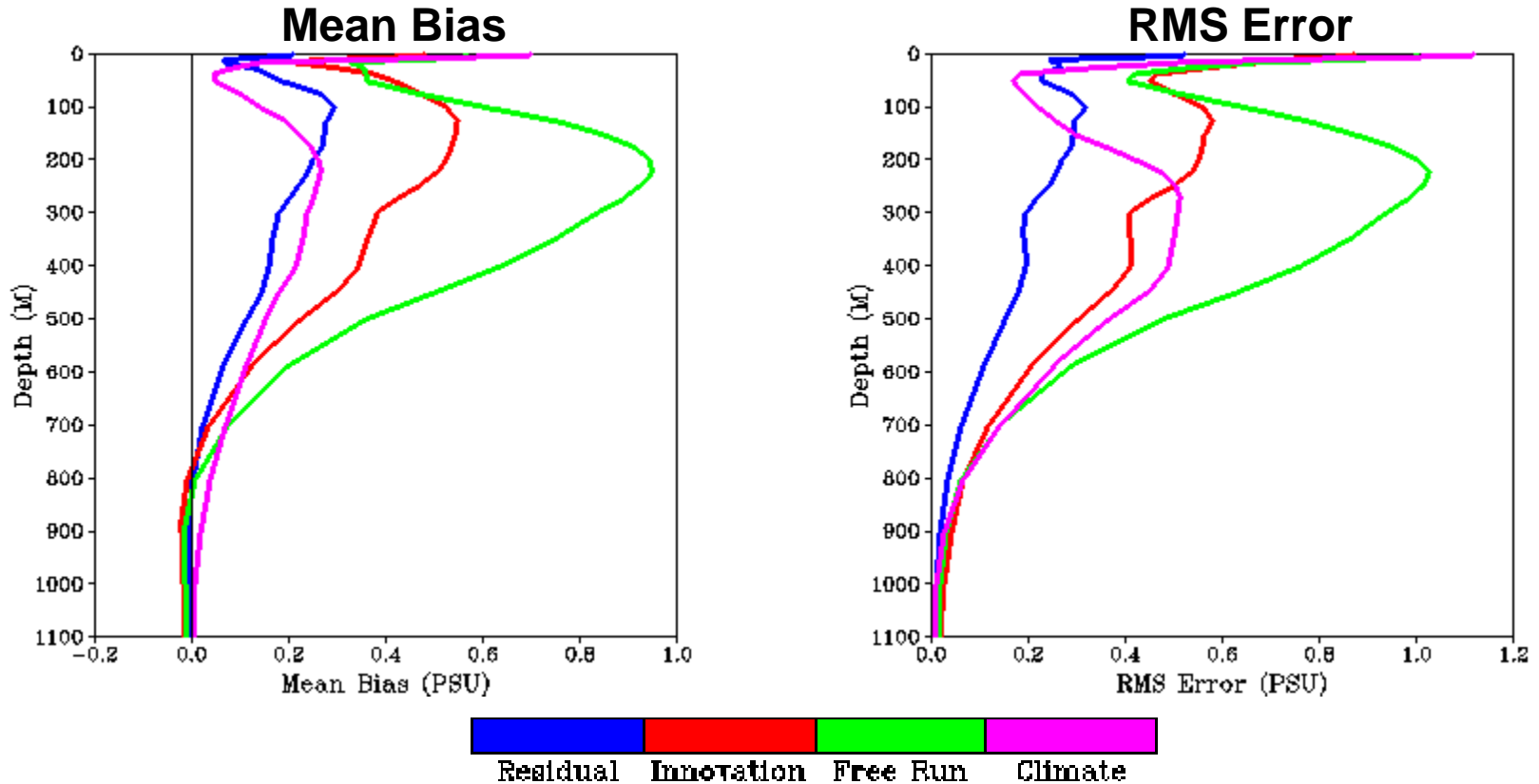
28 measured salinity !

In Situ Profile Temperature Verification



- residuals unbiased, magnitude residual RMS errors similar to obs errors
- 24-hr forecast innovations biased cold, maximum errors in thermocline
- model free run biased very cold at all depths (0.5 to 2.2 °C)

In Situ Profile Salinity Verification



- residuals biased fresh, magnitude residual RMS errors similar to obs errors
- 24-hr forecast innovations biased fresh, large errors near surface
- model free run biased fresh in upper 700 m water column, low errors at depth



Conclusions and Future Plans

Conclusions

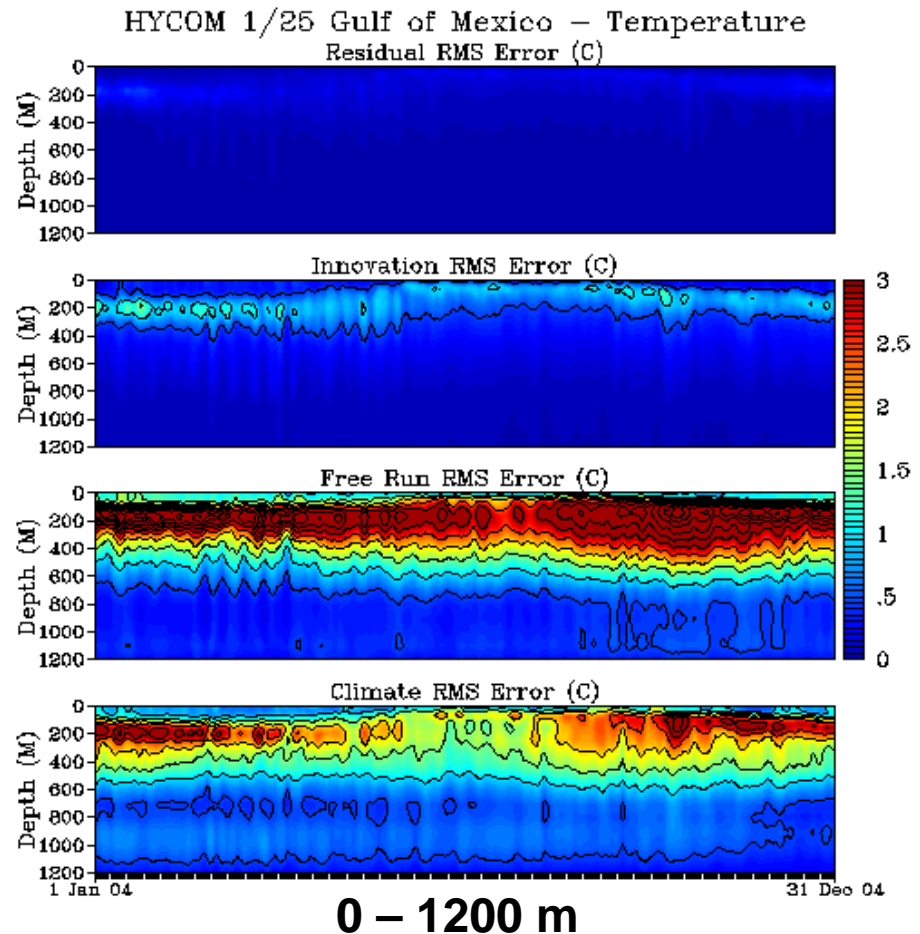
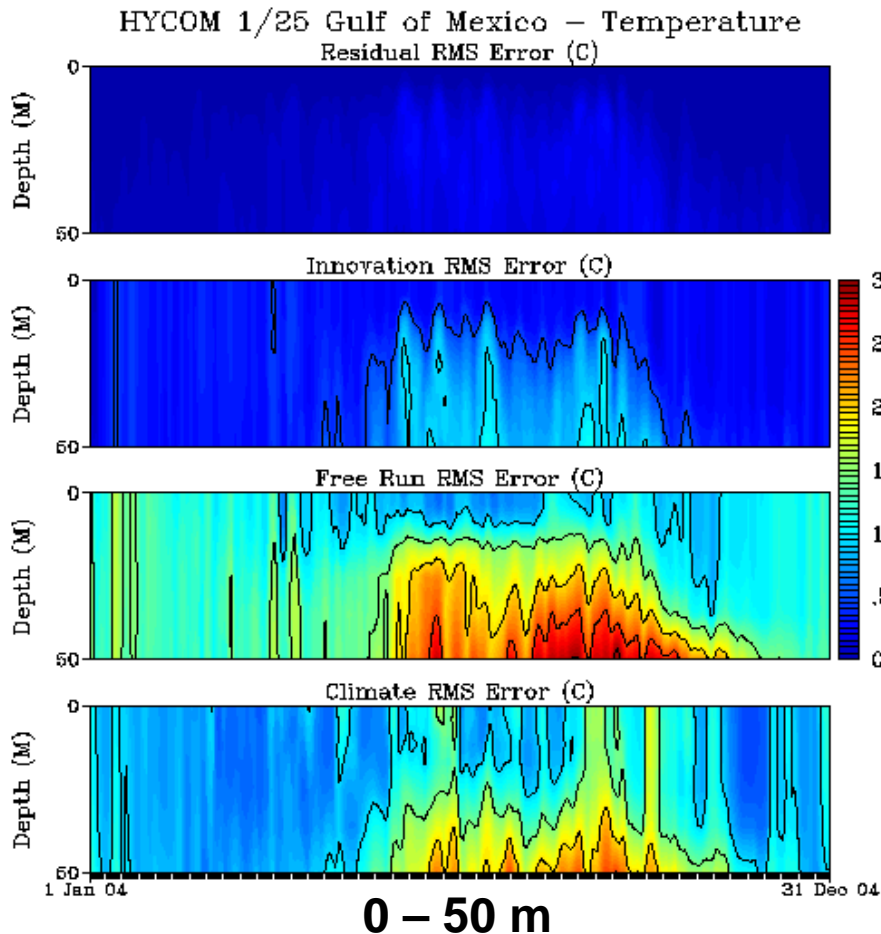
- successive reduction in error from assimilation
 - model free run >> 24-hr assimilative forecast > analysis nowcast
- no spurious time dependent model adjustments to data corrections
- model appears to be biased cold (all depths) and fresh (at depth)
 - difficult for assimilation to correct systematic model errors
 - conclusion based primarily on synthetic profiles at depth
 - need more *in situ* observations, better sampling in space and time

Plans

- compute analysis performance measures from innovation and residual time series
- prediction of independent data – MEDS, oil platform observations, etc
- examine oceanographic aspects of assimilative and model free runs

Temperature Validation – RMS Error

Expanded Depth Ranges



- innovation errors in upper 50 m show small corrections in mixed layer
- innovation and forecast error corrections in upper 1200 m are restricted to depths shallower than ~600 m

END