

REPORT DOCUMENTATION PAGE			Form Approved OMB NO. 0704-0188	
<p>The public reporting burden for this collection of information is estimated to average 1 hour per response, including the time for reviewing instructions, searching existing data sources, gathering and maintaining the data needed, and completing and reviewing the collection of information. Send comments regarding this burden estimate or any other aspect of this collection of information, including suggestions for reducing this burden, to Washington Headquarters Services, Directorate for Information Operations and Reports, 1215 Jefferson Davis Highway, Suite 1204, Arlington VA, 22202-4302. Respondents should be aware that notwithstanding any other provision of law, no person shall be subject to any penalty for failing to comply with a collection of information if it does not display a currently valid OMB control number.</p> <p>PLEASE DO NOT RETURN YOUR FORM TO THE ABOVE ADDRESS.</p>				
1. REPORT DATE (DD-MM-YYYY)		2. REPORT TYPE		3. DATES COVERED (From - To)
		New Reprint		-
4. TITLE AND SUBTITLE			5a. CONTRACT NUMBER	
Engineered two-dimensional Ising interactions in a trapped-ion quantum simulator with hundreds of spins			W911NF-11-1-0400	
			5b. GRANT NUMBER	
			5c. PROGRAM ELEMENT NUMBER	611103
6. AUTHORS			5d. PROJECT NUMBER	
Joseph W. Britton, Brian C. Sawyer, Adam C. Keith, C.-C. Joseph Wang, James K. Freericks, Hermann Uys, Michael J. Biercuk, John J. Bollinger			5e. TASK NUMBER	
			5f. WORK UNIT NUMBER	
7. PERFORMING ORGANIZATION NAMES AND ADDRESSES			8. PERFORMING ORGANIZATION REPORT NUMBER	
Massachusetts Institute of Technology (MIT) Office of Sponsored Programs Bldg. E19-750 Cambridge, MA 02139 -4307				
9. SPONSORING/MONITORING AGENCY NAME(S) AND ADDRESS(ES)			10. SPONSOR/MONITOR'S ACRONYM(S) ARO	
U.S. Army Research Office P.O. Box 12211 Research Triangle Park, NC 27709-2211			11. SPONSOR/MONITOR'S REPORT NUMBER(S) 59745-PH-MUR.27	
12. DISTRIBUTION AVAILABILITY STATEMENT Approved for public release; distribution is unlimited.				
13. SUPPLEMENTARY NOTES The views, opinions and/or findings contained in this report are those of the author(s) and should not be construed as an official Department of the Army position, policy or decision, unless so designated by other documentation.				
14. ABSTRACT The presence of long-range quantum spin correlations underlies a variety of physical phenomena in condensed-matter systems, potentially including high-temperature superconductivity. However, many properties of exotic, strongly correlated spin systems, such as spin liquids, have proved difficult to study, in part because calculations involving N-body entanglement become intractable for as few as $N \sim 30$ particles. Feynman predicted that a quantum simulator - a special-purpose "analogue" processor built using quantum bits (qubits)-would be				
15. SUBJECT TERMS ion trap				
16. SECURITY CLASSIFICATION OF:			17. LIMITATION OF ABSTRACT	15. NUMBER OF PAGES
a. REPORT UU	b. ABSTRACT UU	c. THIS PAGE UU	UU	
				19a. NAME OF RESPONSIBLE PERSON Paola Cappellaro
				19b. TELEPHONE NUMBER 617-253-8137

## Report Title

Engineered two-dimensional Ising interactions in a trapped-ion quantum simulator with hundreds of spins

### ABSTRACT

The presence of long-range quantum spin correlations underlies a variety of physical phenomena in condensed-matter systems, potentially including high-temperature superconductivity. However, many properties of exotic, strongly correlated spin systems, such as spin liquids, have proved difficult to study, in part because calculations involving N-body entanglement become intractable for as few as  $N \sim 30$  particles. Feynman predicted that a quantum simulator - a special-purpose "analogue" processor built using quantum bits (qubits)- would be inherently suited to solving such problems.

In the context of quantum magnetism, a number of experiments have demonstrated the feasibility of this approach, but simulations allowing controlled, tunable interactions between spins localized on two- or three-dimensional lattices of more than a few tens of qubits have yet to be demonstrated, in part because of the technical challenge of realizing large-scale qubit arrays. Here we demonstrate a variable-range Ising-type spin-spin interaction,  $J_{i,j}$ , on a naturally occurring, two-dimensional triangular crystal lattice of hundreds of spin-half particles (beryllium ions stored in a Penning trap). This is a computationally relevant scale more than an order of magnitude larger than previous experiments. We show that a spin-dependent optical dipole force can produce an antiferromagnetic interaction, where  $0 \leq a \leq 3$  and  $d_{i,j}$  is the distance between spin pairs. These power laws correspond physically to infinite-range ( $a = 0$ ), Coulomb-like ( $a = 1$ ), monopole-dipole ( $a = 2$ ) and dipole-dipole ( $a = 3$ ) couplings. Experimentally, we demonstrate excellent agreement with a theory for  $0.05 \leq a \leq 1.4$ . This demonstration, coupled with the high spin count, excellent quantum control and low technical complexity of the Penning trap, brings within reach the simulation of otherwise computationally intractable problems in quantum magnetism.

---

**REPORT DOCUMENTATION PAGE (SF298)**  
**(Continuation Sheet)**

---

Continuation for Block 13

ARO Report Number 59745.27-PH-MUR  
Engineered two-dimensional Ising interactions in ...

Block 13: Supplementary Note

© 2012 . Published in Nature, Vol. Ed. 0 484, (7395) (2012), (7395). DoD Components reserve a royalty-free, nonexclusive and irrevocable right to reproduce, publish, or otherwise use the work for Federal purposes, and to authorize others to do so (DODGARS §32.36). The views, opinions and/or findings contained in this report are those of the author(s) and should not be construed as an official Department of the Army position, policy or decision, unless so designated by other documentation.

Approved for public release; distribution is unlimited.

## Engineered 2D Ising interactions on a trapped-ion quantum simulator with hundreds of spins

Joseph W. Britton<sup>1</sup>, Brian C. Sawyer<sup>1</sup>, Adam C. Keith<sup>2,3</sup>, C.-C. Joseph Wang<sup>2</sup>, James K. Freericks<sup>2</sup>, Hermann Uys<sup>4</sup>, Michael J. Biercuk<sup>5</sup>, John. J. Bollinger<sup>1</sup>

<sup>1</sup>US National Institute of Standards and Technology, Time and Frequency Division, Boulder, CO 80305

<sup>2</sup>Department of Physics, Georgetown University, Washington, DC 20057

<sup>3</sup>Department of Physics, North Carolina State University, Raleigh, NC 27695

<sup>4</sup>National Laser Centre, Council for Scientific and Industrial Research, Pretoria, South Africa

<sup>5</sup>Centre for Engineered Quantum Systems, School of Physics, The University of Sydney, NSW 2006 Australia

The presence of long-range quantum spin correlations underlies a variety of physical phenomena in condensed matter systems, potentially including high-temperature superconductivity [1, 2]. However, many properties of exotic strongly correlated spin systems (e.g., spin liquids) have proved difficult to study, in part because calculations involving  $N$ -body entanglement become intractable for as few as  $N \sim 30$  particles [3]. Feynman divined that a quantum simulator — a special-purpose "analog" processor built using quantum particles (qubits) — would be inherently adept at such problems [4, 5]. In the context of quantum magnetism, a number of experiments have demonstrated the feasibility of this approach [6–14]. However, simulations of quantum magnetism allowing controlled, tunable interactions between spins localized on 2D and 3D lattices of more than a few  $10$ 's of qubits have yet to be demonstrated, owing in part to the technical challenge of realizing large-scale qubit arrays. Here we demonstrate a variable-range Ising-type spin-spin interaction  $J_{i,j}$  on a *naturally occurring* 2D triangular crystal lattice of hundreds of spin-1/2 particles ( ${}^9\text{Be}^+$  ions stored in a Penning trap), a computationally relevant scale more than an order of magnitude larger than existing experiments. We show that a spin-dependent optical dipole force can produce an antiferromagnetic interaction  $J_{i,j} \propto d_{i,j}^{-a}$ , where  $a$  is tunable over  $0 < a < 3$ ;  $d_{i,j}$  is the distance between spin pairs. These power-laws correspond physically to infinite-range ( $a = 0$ ), Coulomb-like ( $a = 1$ ), monopole-dipole ( $a = 2$ ) and dipole-dipole ( $a = 3$ ) couplings. Experimentally, we demonstrate excellent agreement with theory for  $0.05 \lesssim a \lesssim 1.4$ . This demonstration coupled with the high spin-count, excellent quantum control and low technical complexity of the Penning trap brings within reach simulation of interesting and otherwise computationally intractable problems in quantum magnetism.

A challenge in condensed matter physics is the fact that many quantum-magnetic interactions cannot currently be modeled in a meaningful way. A canonical example is the spin-liquid postulated by Anderson [1]. He suggested this exotic state would arise in a collection of spin-1/2 particles residing on a triangular lattice and coupled by a nearest-neighbor antiferromagnetic Heisenberg interaction. The spin-liquid's

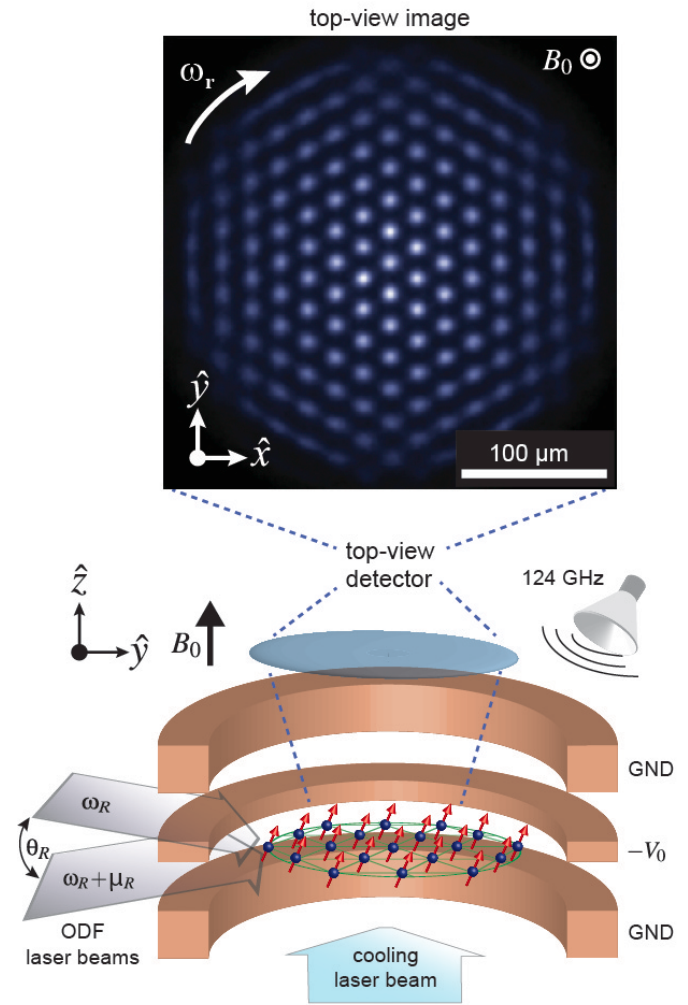


Figure 1. The Penning trap confines hundreds of spin-1/2 particles (qubits) on a two-dimensional (2D) triangular lattice. Each qubit is the valence electron spin of a  ${}^9\text{Be}^+$  ion. (lower) A Penning trap confines ions by use of a combination of static electric and magnetic fields. The trap parameters are configured so that laser-cooled ions form a triangular 2D crystal. A general spin-spin interaction  $\hat{H}_I$  is generated by a spin-dependent excitation of the transverse (along  $\hat{z}$ ) motional modes of the ion crystal. This coupling is implemented with an optical dipole force (ODF) due to a pair of off-resonance laser beams (left side) with angular separation  $\theta_R$  and difference frequency  $\mu_R$ . Microwaves at 124 GHz are directed to the ions with a horn and permit global spin rotations  $\hat{H}_B$ . (upper) A representative top-view resonance-fluorescence image showing the center region of an ion crystal captured in the ions' rest-frame; in the lab-frame the ions rotate at  $\omega_r = 2\pi \times 43.8$  kHz [21]. Fluorescence is an indication of the qubit spin-state ( $|\uparrow\rangle$  bright,  $|\downarrow\rangle$  dark); here, the ions are in the state  $|\uparrow\rangle$ . The lattice constant is  $d_0 \sim 20 \mu\text{m}$ .

ground state is massively degenerate, owing to spin frustration, and is expected to exhibit unusual behaviors including phase transitions at zero temperature driven by quantum fluctuations [15]. However, despite recent advances [16, 17] a detailed understanding of large-scale frustration in solids remains elusive [2, 18–20].

Atomic physicists have recently entered the fray, providing a bottom-up approach by engineering the relevant spin interactions in quantum simulators [5, 22, 23]. The necessary experimental capabilities were first demonstrated in the context of atomic clocks: laser cooling, deterministic spin localization, precise spin-state quantum control, high-fidelity readout, and engineered spin-spin coupling (e.g., [24]). In the domain of quantum magnetism, this tool set permits control of parameters commonly viewed as immutable in natural solid systems, e.g., lattice spacing and geometry, and spin-spin interaction strength and range.

Initial simulations of quantum Ising and Heisenberg interactions with localized spins were done with neutral atoms in optical lattices [6, 11], atomic ions in Paul traps [9, 10, 13, 14], and photons [12]. This work involved a domain readily calculable on a classical computer: interactions between  $N \sim 10$  qubits localized in 1D chains. The move to quantum magnetic interactions on 2D lattices and larger, computationally relevant particle numbers is the crucial next step but can require significant technological development [25].

In our Penning trap apparatus, laser-cooled  ${}^9\text{Be}^+$  ions *naturally* form a stable 2D Coulomb crystal on a triangular lattice with  $\sim 300$  spins (Fig. 1). Each ion is spin-1/2 system (qubit) over which we exert high fidelity quantum control [26]. In this paper we demonstrate the use of a spin-dependent optical dipole force (ODF) to engineer a continuously-tunable Ising-type spin-spin coupling  $J_{i,j} \propto d_{i,j}^{-a}$ . This capability, in tandem with a modified measurement routine (e.g., by more sophisticated processing of images like Fig. 1), is a key advance toward useful simulations of quantum magnetism.

A Penning trap confines ions in a static quadrupolar electric potential (see Methods) and a strong, homogeneous magnetic field  $B_0\hat{z}$  (here,  $B_0 = 4.46$  Tesla). Axial trapping (along  $\hat{z}$ ) is due to the electric field. Ion rotation at frequency  $\omega_r$  (about  $\hat{z}$ ) produces a radial restoring potential due to the velocity-dependent Lorentz force ( $q\vec{v} \times \vec{B}$ ). Tuning the ratio of the axial to radial confinement allows controlled formation of a planar geometry and, after Doppler laser cooling, the formation of a 2D Coulomb crystal on a triangular lattice (see [21] and Methods). We routinely generate crystals with  $100 \lesssim N \lesssim 300$  ions, where the valence-electron spin state of each ion serves as a qubit [26]. Following techniques developed in linear (1D) Paul traps [27], spins confined in the same trapping potential are coupled through their shared motional degrees of freedom.

Using well controlled external fields, we engineer spin interactions of the form

$$\begin{aligned} \hat{H}_B &= \sum_i \vec{B}_\mu \cdot \hat{\sigma}_i \\ \hat{H}_I &= \frac{1}{N} \sum_{i < j} J_{i,j} \hat{\sigma}_i^z \hat{\sigma}_j^z, \end{aligned} \quad (1)$$

where  $\hat{\sigma}_i^z$  is the  $z$ -Pauli matrix for ion  $i$ . We label the qubit spin states  $|\uparrow\rangle \equiv |m_s = +1/2\rangle$  and  $|\downarrow\rangle \equiv |m_s = -1/2\rangle$ , where  $m_s$  is the spin's projection along the  $B_0\hat{z}$  quantizing field, so that  $\hat{\sigma}_i^z |\uparrow\rangle = +|\uparrow\rangle$  and  $\hat{\sigma}_i^z |\downarrow\rangle = -|\downarrow\rangle$ .  $\hat{H}_B$  is an interaction (e.g.,  $B_\mu \hat{\sigma}_x$ ) generated by externally applied microwaves at 124 GHz that couples equally to all spins and permits global rotations (Fig. 1). The interaction  $\hat{H}_I$  describes a general coupling  $J_{i,j}$

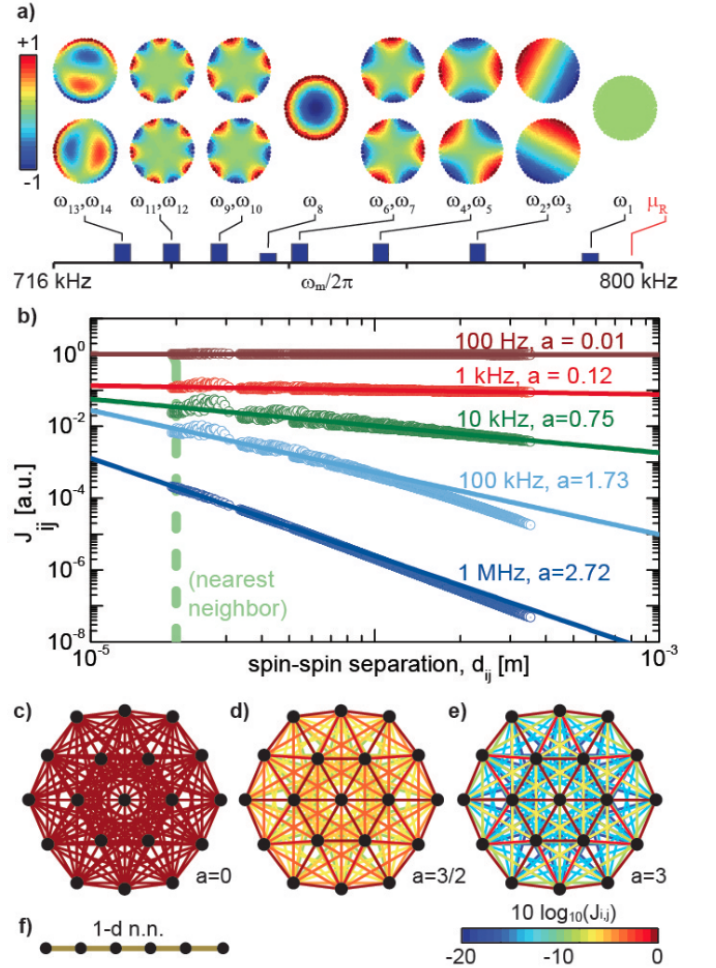


Figure 2. Spin-spin interactions are mediated by the ion crystal's transverse motional degrees of freedom. (a) For a 2D crystal with  $N = 217$  ions and  $\omega_r = 2\pi \times 45.6$  kHz, we calculate the eigenfunctions  $\vec{b}_m$  and eigenfrequencies  $\omega_m$  for the  $N$  transverse motional modes (see Supplementary Information). Plotted here are  $\omega_m$  and  $\vec{b}_m$  for the 14 highest frequency modes. Relative mode amplitude is indicated by color. The center-of-mass motion (COM) is the highest in frequency ( $\omega_1 \sim 2\pi \times 795$  kHz) and has no spatial variation in  $\vec{b}_m$ . The lowest-frequency mode ( $\omega_{217} \sim 2\pi \times 200$  kHz) exhibits spatial variation in  $\vec{b}_m$  at the lattice spacing length scale  $d_0 \sim 20\mu\text{m}$ . (b) By use of Eq. 3,  $J_{i,j}$  is calculated explicitly for  $N = 217$  spins and plotted as a function of spin-spin separation  $d_{i,j}$ . For  $\mu_R - \omega_1 < 2\pi \times 1$  kHz,  $\hat{H}_{ODF}$  principally excites COM motion in which all ions equally participate: the spin-spin interaction is spatially uniform. As the detuning is increased, modes of higher spatial frequencies participate in the interaction and  $J_{i,j}$  develops a finite interaction length. We find the scaling of  $J_{i,j}$  with spin separation  $d_{i,j}$  follows the power law  $d_{i,j}^{-a}$ . For  $\mu_R - \omega_1 \gg 2\pi \times 500$  kHz, all transverse modes participate and the spin-spin coupling power law approaches  $a = 3$ . The solid lines are power-law fits to the theory points. For comparison with other experiments, the nearest neighbor coupling ( $d_0 = 20\mu\text{m}$ ) is denoted by the dashed line. (c-e) The power-law nature of  $J_{i,j}$  is qualitatively illustrated for  $N = 19$  (larger  $N$  is illegible). Nodes (spins) are joined by lines colored in proportion to their coupling strength for various  $a$ . (f) For context, the graph for a 1D nearest-neighbor Ising interaction, a well-known model in quantum field theory.

between spins  $i$  and  $j$ , distance  $d_{i,j}$  apart [28, 29];  $J_{i,j} > 0$  ( $J_{i,j} < 0$ ) is an antiferromagnetic (ferromagnetic) coupling.

We implement  $\hat{H}_I$  using a spatially uniform spin-dependent optical dipole force (ODF) generated by a pair of off-resonant laser beams with difference frequency  $\mu_R$  (see Fig. 1 and Supplementary Information). The ODF couples each ion's spin to one or more of the  $N$  transverse (along  $\hat{z}$ ) motional modes of the Coulomb crystal by forcing coherent displacements of the ions that in turn modify their Coulomb potential energy through the interaction

$$\hat{H}_{ODF} = - \sum_i^N F_z(t) \hat{z}_i \hat{\sigma}_i^z. \quad (2)$$

Here  $F_z(t) = F_0 \cos \mu_R t$  is the ODF,  $\hat{z}_i = \sum_{m=1}^N b_{i,m} \sqrt{\frac{\hbar}{2M\omega_m}} (\hat{a}_m e^{-i\omega_m t} + \hat{a}_m^\dagger e^{i\omega_m t})$  is the axial position operator for ion  $i$ , and  $b_{i,m}$  are elements of the  $N$  transverse eigenfunctions  $\vec{b}_m$  at frequencies  $\omega_m$  normalized as  $\sum_{m=1}^N |b_{i,m}|^2 = \sum_{i=1}^N |b_{i,m}|^2 = 1$  [28, 29]. The modes include the center-of-mass mode ( $\omega_1$ ) as well as an array of higher spatial-frequency modes that may be derived from atomistic calculations (see Fig. 2) and confirmed by experimental measurement [30].

For small coherent displacements, where residual spin-motion entanglement can be neglected (see [29] and Methods),  $\hat{H}_{ODF}$  is equivalent to  $\hat{H}_I$  in Eq. 1: spins  $i$  and  $j$  are coupled in proportion to their spin states  $\hat{\sigma}_i^z$  and  $\hat{\sigma}_j^z$  and mutual participation in each motional mode  $m$ . The coupling coefficient is given by [29]

$$J_{i,j} = \frac{F_0^2 N}{2\hbar M} \sum_{m=1}^N \frac{b_{i,m} b_{j,m}}{\mu_R^2 - \omega_m^2}. \quad (3)$$

These pairwise interaction coefficients  $J_{i,j}$  can be calculated explicitly by use of Eq. 3 and classical calculations of ion motional modes. We find that the range of interaction can be modified by detuning away from the COM mode as discussed in Fig. 2. In the limit  $\mu_R - \omega_1 \gg 2\pi \times 500$  kHz, all modes participate equally in the interaction and  $J_{i,j} \propto d_{i,j}^{-3}$ , as discussed in [28]. At intermediate detuning, we find a power-law scaling of the interaction range  $J_{i,j} \propto d_{i,j}^{-a}$ , where  $a$  can be tuned  $0 \leq a \leq 3$ . That is, by adjusting the single experimental parameter  $\mu_R$  we can mimic a continuum of physical couplings including important special cases:  $a = 0$  is infinite-range,  $a = 1$  is monopole-monopole (Coulomb-like),  $a = 2$  is monopole-dipole and  $a = 3$  is dipole-dipole. Note that  $a = 0$  results in the so-called  $\hat{J}_z^2$  interaction that gives rise to spin-squeezing and is used in quantum logic gates (see Supplementary Information) [27]. In addition, tuning  $\mu_R$  also permits access to both antiferromagnetic (AFM,  $\mu_R > \omega_1$ ) and ferromagnetic (FM,  $\omega_2 \ll \mu_R < \omega_1$ ) couplings [13].

Experimentally, we demonstrate a tunable-range Ising interaction by observing a global spin precession under application of  $\hat{H}_I$ . We compare experimental data with the mean field (MF) prediction that the influence of  $\hat{H}_I$  on spin  $j$  can be modeled as an excess magnetic field in the  $\hat{z}$ -direction  $\vec{B}_j$  due to the remaining  $N - 1$  spins,  $\vec{B}_j = \frac{2}{N} \sum_{i,i \neq j}^N J_{i,j} \langle \hat{\sigma}_i^z \rangle$  (see Supplementary Information). For a general qubit superposition

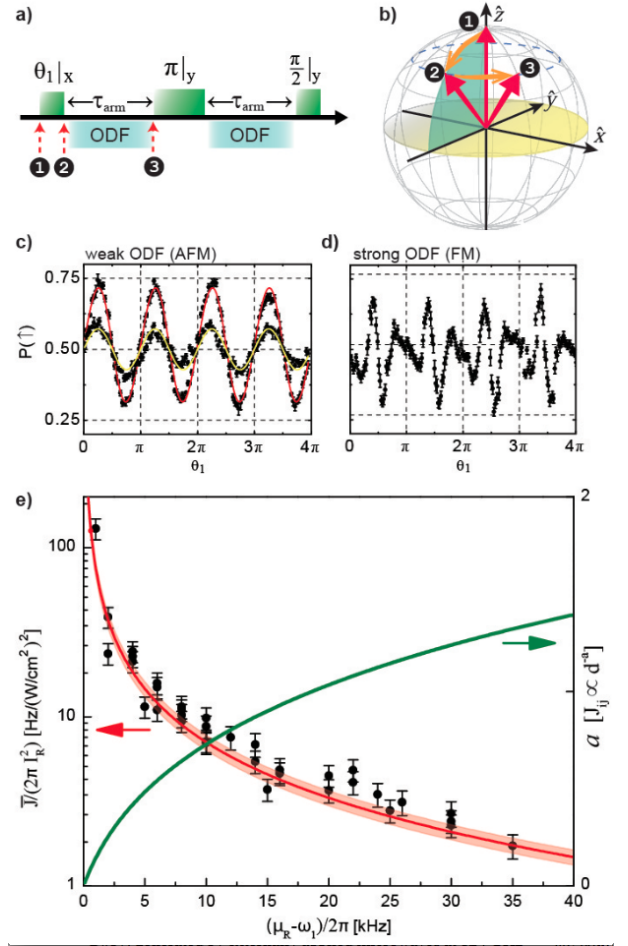


Figure 3. Benchmarking the 2D Ising interaction. (a) Spin-precession benchmarking sequence for  $\hat{H}_I$ . The spins are prepared at the outset in  $|\uparrow\rangle$  (a ferromagnetic state). The spin-spin interaction  $\hat{H}_I$  is present when the ODF laser beams are on. We choose  $\mu_R - \omega_1 = n \times 2\pi / \tau_{arm}$  so that for small detunings from the COM mode ( $\omega_1$ ), the spins are decoupled from the motion at the end of the drive. (b) Evolution of a single spin prior to the application of the spin-echo  $\pi$ -pulse. c,d) Plots exhibiting spin precession  $\propto \langle \hat{\sigma}_z \rangle$  due to  $\hat{H}_I$  as a function of initial tipping angle  $\theta_1$ . The error bars are statistical (s.d.,  $n \sim 200$ ). The plots show typical experimental data (black) and single-parameter fits to Eq.4. For an antiferromagnetic coupling (AFM) and  $\tau_{arm} = 250 \mu\text{s}$ ,  $\mu_R - \omega_1 = 2\pi \times 4.0$  kHz,  $I_R = 1.4 \text{ W}\cdot\text{cm}^{-2}$  we obtain  $\bar{J}/I_R^2 = 2\pi \times 25 \text{ Hz}\cdot\text{W}^{-2}\cdot\text{cm}^4$  (yellow fit). Longer drive periods and higher laser intensity  $I_R$  yield a larger precession. For  $\tau_{arm} = 350 \mu\text{s}$ ,  $\mu_R - \omega_1 = 2\pi \times 2.9$  kHz,  $I_R = 1.9 \text{ W}\cdot\text{cm}^{-2}$  we obtain  $\bar{J}/I_R^2 = 2\pi \times 55 \text{ Hz}\cdot\text{W}^{-2}\cdot\text{cm}^4$  (red fit). The data in this plot is typical of the experiments conducted for benchmarking. (d) For a much stronger interaction, Eq. 4 cannot be used to obtain  $\bar{J}$  since the MF assumption is no longer valid (see Supplementary Information). Also, here we used a small negative detuning ( $\omega_2 \ll \mu_R < \omega_1$ ) which gives a long-range ferromagnetic (FM) interaction. For these experiments we set  $\omega_r = 2\pi \times 45.6$  kHz. (e) Benchmarking results for an ion-crystal with  $N = 206 \pm 10$  ions. Each point is generated by measuring  $\bar{J}$  as in c) and measuring the laser beam intensity at the ions  $I_R$ . The vertical error bars are dominated by uncertainty in  $I_R$  (see Supplementary Information). The solid line (red) is the prediction of MF theory that accounts for couplings to all  $N$  transverse modes; there are no free parameters. The line's breadth reflects experimental uncertainty in the angle  $\theta_R = 4.8^\circ \pm 0.25$ . The MF prediction for the average power-law scaling coefficient  $a$  is drawn in green (right axis, linear scale).

state,  $\bar{B}_j$  gives rise to spin precession about  $\hat{z}$  in excess of that expected due to simple Larmor precession. The experiment sequence shown in Fig. 3a measures this excess precession, averaged over all spins in the crystal. At the outset, each spin is prepared in  $|\uparrow\rangle$ , followed by a rotation about the  $\hat{x}$ -axis by an angle  $\theta_1$ .  $\hat{H}_I$  is applied during the arms of a spin-echo; precession  $\propto \langle \hat{\sigma}_i^z \rangle$  coherently adds over both spin-echo intervals. The final  $\pi/2$ -pulse maps precession out of the initial  $\hat{y}\hat{z}$ -plane into excursions along  $\hat{z}$  (above or below the equatorial plane of the Bloch sphere) that are resolved by projective spin measurement along  $\hat{z}$ .

As a function of “tipping-angle”  $\theta_1$  we detect global state-dependent fluorescence ( $|\uparrow\rangle$  bright,  $|\downarrow\rangle$  dark) using a photomultiplier tube. This measurement permits a systematic study of MF-induced spin precession averaged over all particles,  $\frac{1}{N} \sum_j \bar{B}_j = 2 \left( \frac{1}{N^2} \sum_j \sum_{i \neq j} J_{i,j} \right) \cos \theta_1 \equiv 2\bar{J} \cos \theta_1$ . The probability of detecting  $|\uparrow\rangle$  at the end of the sequence is

$$P(|\uparrow\rangle) = \frac{1}{2} (1 + \exp(-\Gamma \cdot 2\tau_{arm}) \sin(\theta_1) \sin(2\bar{J} \cos(\theta_1) \cdot 2\tau_{arm})), \quad (4)$$

and a single-parameter fit to experimental data yields  $\bar{J}$ . Decoherence due to spontaneous emission is accounted for by  $\Gamma$  and is fixed by independent measurement of the ODF laser beam intensities  $I_R$  ( $\Gamma \propto I_R$ , see Supplementary Information).

In Fig. 3c,d we show representative measurements of excess precession due to  $\hat{H}_I$  for different values of spin coupling strength (determined by  $J_{i,j} \propto I_R^2$ ) and interaction duration  $2\tau_{arm}$ . The excess spin precession varies periodically with  $\theta_1$  (period  $\pi$ ) and larger interaction strength yields greater precession, manifested in our experiment as a larger amplitude modulation of  $P(|\uparrow\rangle)$ . Data agree with Eq. 4 and allow direct extraction of  $\bar{J}$  for given experimental conditions. In Fig. 3e we plot  $\bar{J}$ , normalized by  $I_R^2$  ( $I_R$  independently measured), as function of detuning  $\mu_R - \omega_1$  ( $N = 206 \pm 10$  ions). Using no free parameters, we find excellent agreement with  $\bar{J}$  obtained by averaging over all  $J_{i,j}$ , where the  $J_{i,j}$  were calculated by including couplings to all  $N$  transverse modes (Eq. 3).

The MF interpretation of our benchmarking measurement tolerates only weak spin-spin correlations. Therefore, in the benchmarking regime we apply a weak interaction ( $\bar{J} \cdot 2\tau_{arm} \ll \sqrt{N}/4$ , see Supplementary Information). In a quantum simulation, the same interaction is applied at greater power producing quantum spin-spin correlations. In the present configuration of our apparatus, spontaneous emission due to the ODF laser beams ( $\Gamma$  in Eq. 4) is the dominant source of decoherence. With modest laser powers of 4 mW/beam and a detuning  $\mu_R - \omega_1 = 2\pi \times 2$  kHz, we obtain  $\bar{J} \sim 2\pi \times 0.5$  kHz and  $\Gamma/\bar{J} \sim 0.06$ . The expected spin-squeezing ( $\mathcal{F}_z^2$ ) due to this interaction is 5 dB, limited by spontaneous emission. The ratio  $\Gamma/\bar{J}$  can be reduced ( $\bar{J}$  increased) by a factor of 50 by increasing  $\theta_R$  to  $35^\circ$ , a likely prerequisite for access to the shortest-range, dipole-dipole coupling regime ( $a \rightarrow 3$ ). At present, geometric constraints limit  $\theta_R \lesssim 5^\circ$ ; we plan upgrades to our apparatus to permit  $\theta_R = 35^\circ$ . We also note that relaxation of the constraint  $F_\uparrow \sim -F_\downarrow$  can also reduce  $\Gamma/\bar{J}$ .

In summary, this work establishes the suitability of a Penning trap apparatus to pursue quantum simulation in a regime

inaccessible to classical computation. Our approach is based on naturally occurring 2D Coulomb (Wigner) crystals with hundreds of ion qubits, a novel experimental system that does not require demanding trap-engineering efforts. Experimentally, we used an optical-dipole force to engineer a tunable-range spin-spin interaction and benchmarked its interaction strength. Excellent agreement is obtained with the predictions of mean field theory and atomistic calculations that predict a power-law antiferromagnetic spin coupling  $J_{i,j} \propto d_{i,j}^{-a}$  for  $0.05 \lesssim a \lesssim 1.4$ .

With this work as a foundation, we anticipate a variety of future investigations. For example, simultaneous application of non-commuting interactions  $\hat{H}_B$  and  $\hat{H}_I$  is expected to give rise to quantum phase transitions;  $\hat{H}_I$  may be antiferromagnetic ( $\mu_R > \omega_1$ ) or ferromagnetic ( $\omega_2 \ll \mu_R < \omega_1$ ). Geometric modifications to our apparatus will permit access to larger  $\theta_R$  and antiferromagnetic dipole-dipole-type couplings ( $a \rightarrow 3$ ). Improved image processing software will permit direct measurement of spin-spin correlation functions using our existing single-spin-resolving imaging system (Fig. 1).

## METHODS

In a frame rotating at frequency  $\omega_r$ , the trap potential is

$$q\phi(r, z) = \frac{1}{2} M \omega_1^2 (z^2 + \beta r^2), \quad (5)$$

where  $q$  is the ion charge,  $M$  is the single-ion mass and  $\beta = \omega_r \omega_1^{-2} (\Omega_c - \omega_r) - 1/2$ . The  ${}^9\text{Be}^+$  cyclotron frequency is  $\Omega_c = B_0 q / M = 2\pi \times 7.6$  MHz and the frequency of the ions' harmonic center-of-mass (COM) motion along  $\hat{z}$  is  $\omega_1 = 2\pi \times 795$  kHz. Ion rotation is precisely controlled with an external rotating quadrupole potential [21]. For  $100 \lesssim N \lesssim 300$  we set  $\omega_r \sim 2\pi \times 45$  kHz so that the radial confinement is sufficiently weak that a cloud of ions relaxes into a single 2D plane ( $\beta \ll 1$ ). Upon Doppler laser cooling the ions' motional degrees of freedom ( $T_{COM} \sim 1$  mK) [30], the ions naturally form a 2D Coulomb crystal on a triangular lattice, the geometry that minimizes the energy of their mutual Coulomb potential energy. The crystal has  $N$  transverse eigenmodes  $\omega_m$  with eigenfunctions  $\bar{b}_m$ ; the COM mode  $\omega_1$  is the highest frequency mode (see Fig. 2).

The spin-dependent ODF is generated by a pair of off-resonance laser beams with angular separation  $\theta_R \sim 4.8^\circ$  and difference frequency  $\mu_R$  (see Fig. 1). The result is a traveling 1D optical lattice of wavelength  $\lambda_R = 2\pi / |\Delta\vec{k}| \approx 3.7 \mu\text{m}$  whose wavefronts propagate along  $\hat{z}$ , traversing the ion crystal at frequency  $\mu_R/2\pi$ . Alignment of  $\Delta\vec{k}$  is crucial for proper spin-spin coupling (see Supplementary Information). The lattice's polarization gradient induces a differential AC Stark shift on the qubit states (a spin-dependent force). We choose operating conditions that give  $F_\uparrow \approx -F_\downarrow$ , where  $F_\uparrow = F_0 \cos(\mu_R t) \hat{z}$ . For reference, if the single-beam intensity at the ions is  $I_R = 1 \text{ W} \cdot \text{cm}^{-2}$ , we obtain  $F_0 \sim 1.4 \times 10^{-23}$  N.

Small coherent displacements that produce negligible spin-motion entanglement (as required by Eq. 3) are obtained for

detunings satisfying

$$\hbar |\mu_R - \omega_m| > F_0 \sqrt{\hbar(2\bar{n}_m + 1)/(2M\omega_m)}. \quad (6)$$

This is a more stringent criterion than that used by others [13, 29] as it includes an additional  $\sqrt{N}$  to account for a typical distribution of composite spin states. Moreover, we also include a correction factor for finite temperature  $\bar{n}_m \sim k_B T / \hbar \omega_m$ .

#### ACKNOWLEDGMENTS

This work was supported by the DARPA OLE programme and NIST. A.C.K. was supported by the NSF under grant number DMR-1004268. B.C.S. is supported by an NRC fellowship funded by NIST. J.K.F. was supported by the McDevitt endowment bequest at Georgetown University. M.J.B. and J.J.B. acknowledge partial support from the Australian Research Council Center of Excellence for Engineered Quantum Systems CE110001013. We thank F. Da Silva, R. Jordens, D. Leibfried, A. O'Brien, R. Scalettar and A. M. Rey for discussions.

#### DISTRIBUTION INFORMATION

This manuscript is a contribution of the US National Institute of Standards and Technology and is not subject to US copyright. Correspondence and requests for materials should be addressed to J.W.B. (joe.britton@gmail.com). This version of the manuscript was generated by J.W.B. on April 25, 2012.

## SUPPLEMENTARY INFORMATION

A review of ion confinement in Penning traps and discussion of a variety of equilibrium states, including 2D Coulomb crystals (ionic Wigner crystals), can be found in [21, 31, 32]. A number of authors have theoretically analyzed and discussed the prospects of using 2D Coulomb crystals for quantum information and computation [28, 33–37]. The engineered Ising interaction, which we report here, builds on our previous experimental work using 2D Coulomb crystals for high-fidelity quantum control [26, 38–41]. Below we discuss some details of this new capability.

### I. SPIN INITIALIZATION, CONTROL, AND MEASUREMENT

Reference [26] gives a detailed discussion of our spin initialization, control, and measurement capabilities with planar ion arrays in Penning traps. Here we briefly summarize some of that discussion, emphasizing aspects relevant for the measurements reported here. Figure 4 shows the relevant  ${}^9\text{Be}^+$  energy levels. We use the valence electron spin states parallel  $|\uparrow\rangle = |m_J = +\frac{1}{2}\rangle$  and antiparallel  $|\downarrow\rangle = |m_J = -\frac{1}{2}\rangle$  to the applied magnetic field of the Penning trap as the two-level system or qubit. In the 4.46 T magnetic field of the trap, these levels are split by approximately  $\Omega_0 = 2\pi \times 124$  GHz. The  ${}^9\text{Be}^+$  nucleus has spin  $I = 3/2$ . However, we optically pump the nuclear spin to the  $m_I = +3/2$  level [42], where it remains throughout the duration of an experiment. The ions are Doppler laser-cooled to a temperature  $\sim 1$  mK [30] by a 1 MHz linewidth, 313 nm laser tuned approximately 10 MHz below the  $|\uparrow\rangle \rightarrow |{}^2P_{3/2} m_J = +3/2\rangle$  cycling transition. Spins in the  $|\downarrow\rangle$  state are efficiently optically pumped to the  $|\uparrow\rangle$  state by a laser tuned to the  $|\downarrow\rangle \rightarrow |{}^2P_{3/2} m_J = +1/2\rangle$  transition. The repump beam and the main Doppler laser cooling beam are directed along the magnetic field ( $\hat{z}$ -axis). Powers are a few milli-Watt with laser beam waists of  $\sim 1$  mm. In addition, a weak Doppler laser cooling beam ( $\sim 40 \mu\text{m}$  waist) directed perpendicularly to the  $\hat{z}$ -axis directly Doppler cools the perpendicular degrees of freedom. A typical experimental cycle starts with 10 ms to 20 ms of combined Doppler laser cooling and repumping. The repump laser remains on for another 3 ms after the Doppler cooling laser is turned off. The fidelity of the  $|\uparrow\rangle$  state preparation is estimated to be very high ( $\gg 99.9\%$ ) [26].

Low-phase-noise microwave radiation at 124 GHz is used to rotate the spins through the magnetic dipole interaction  $\hat{H}_B = g\mu_B \sum_i \vec{B}_\mu(t) \cdot (\vec{\sigma}_i/2)$ , where  $\vec{B}_\mu(t)$  is the applied microwave field (predominantly perpendicular to  $\hat{z}$ ),  $g \simeq 2$  is the electron g-factor, and  $\mu_B$  is the Bohr magneton. The fidelity of a  $\pi$ -pulse was measured to be greater than 99.9% in a random benchmarking experiment [26]. The microwave source consisted of an agile 15.5 GHz source followed by an amplifier multiplier chain with 150 mW output power at 124 GHz. The 15.5 GHz source is obtained by mixing, with a single-side-band mixer, the output of a 15.2 GHz dielectric resonator

oscillator (DRO) with the output of a 300 MHz direct digital synthesizer (DDS) that is under field programmable gate array (FPGA) control. On/off switching of the 124 GHz microwaves is done at 15.5 GHz before the amplifier multiplier chain. The microwaves are transported to the ions down the bore of the magnet with a rigid waveguide and directed onto the ions with a horn located between the ring and endcap electrodes of the trap. With this arrangement the microwave hardware does not block optical access along the magnetic field axis, enabling imaging of the ion resonance fluorescence scattered along the magnetic field (top-view image — see III). We obtain  $\pi$ -pulses of  $70 \mu\text{s}$  duration with the 150 mW output power of the amplifier multiplier chain and the setup described here. The measured spin-echo coherence duration ( $T_2$ ) is  $\sim 100$  ms.

At the end of an experimental sequence we turn on the Doppler cooling laser and make a projective measurement of the ion spin state through state-dependent resonance fluorescence. With the Doppler cooling laser on, an ion in the  $|\uparrow\rangle$  state scatters  $\sim 10^7$  photons/s while an ion in  $|\downarrow\rangle$  is dark. For the spin precession measurements reported here we performed a global spin-state detection. Specifically we detected, with  $f/5$  light collection and a photomultiplier tube, the resonance fluorescence from all the ions in a direction perpendicular to the magnetic field (the side-view). For detection periods of  $\sim 50$  ms the detection fidelity is high, typically limited by quantum projection noise. Here we used short detection periods of  $\sim 500 \mu\text{s}$ , from which we would detect  $\sim 1$  photon for each bright state  $|\uparrow\rangle$ . Typically, each experiment was repeated  $\sim 100$  times and averaged, resulting in a few percent uncertainty due to shot noise in the measurement of  $P(\uparrow)$ .

The spin-precession signal used to benchmark spin-spin coupling in the manuscript relied on a global spin-state measurement via side-view fluorescence collected on a photomultiplier tube. In the future, we anticipate that time-resolved top-view images such as that shown in Fig. 1 will be used to obtain the spin state of individual ions. As discussed in the manuscript, ion crystal rotation at  $\omega_r$  is phase-locked to an external oscillator. We use an imaging photomultiplier tube to record  $(x, y, t)$  for each photon. Rotating-frame images are generated computationally given  $(x, y, t)$  and  $\omega_r$ , a technique established in 2001 [43]. In linear Paul trap experiments, determination of ion spin-state is possible with as few as 10 photons/ion [44]. At present we await the arrival of a new  $(x, y, t)$  detector system capable of a detection rate of  $5 \times 10^6$  Hz. We anticipate this will enable high-fidelity spin-state measurement of a 300-ion crystal in  $\sim 10$  ms. From a suite of identical experiments, the spin-spin correlation function can be computed. We believe that our ability to resolve single ions, even in the presence of rotation at  $\omega_R$  indicates a path forward in performing individually resolved measurements of fluorescence correlations between ions.

Previous measurements have elucidated some of the possible limiting mechanisms. For instance, the stability of crystal orientation in the rotating frame was studied for spherical crystals of  $\sim 10,000$  ions. In these experiments the orientation was observed to precess uniformly for durations of  $\gtrsim 10$  s, then suddenly slip by a large angle before again re-

suming slow precession [43]. This “stick-slip” motion can be followed and easily corrected. Figure 1a of the manuscript was generated from 600 s of integration after stick-slip corrections. Other potential issues include ion loss and background gas collisions. As the trap depth is  $\gg 1$  eV, background gas collisions do not result ion loss. Collisions with background hydrogen generate  $\text{BeH}^+$  (1 per 6 minutes for  $N \sim 300$   $^9\text{Be}^+$  ions) which collect at the crystal perimeter due to centrifugal separation. These effects do not appear to limit top-view imaging fidelity, as demonstrated in Fig. 1a of the manuscript.

## II. OPTICAL-DIPOLE-FORCE LASER SETTINGS

Figure 5 shows a simple sketch of the optical dipole force (ODF) laser beam set-up. As discussed below, the frequency as well as the beam polarizations were chosen to null the AC Stark shift from an individual beam and to produce a state-dependent force that is equal in magnitude but opposite in sign for the  $|\uparrow\rangle$  and  $|\downarrow\rangle$  qubit states ( $F_\uparrow = -F_\downarrow$ ). This reduced the system sensitivity to laser intensity fluctuations. For example, if  $F_\uparrow \neq -F_\downarrow$ , then the interaction induced by the optical dipole force will include terms linear in the  $\hat{\sigma}_i^z$ 's. These terms

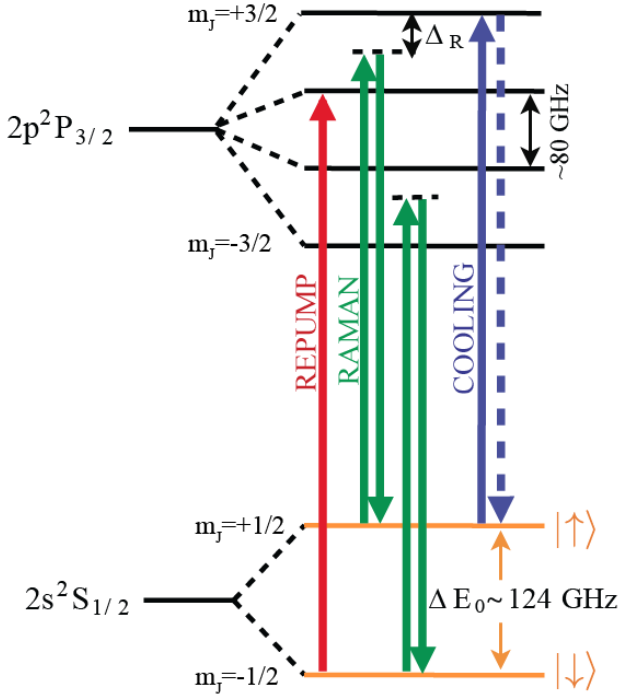


Figure 4. Relevant energy levels of  $^9\text{Be}^+$  at  $B_0 = 4.46$  T (not drawn to scale). We show only  $m_I = +\frac{3}{2}$  levels that are prepared experimentally through optical pumping. The  $2s^2S_{1/2} - 2p^2P_{3/2}$  transition wavelength is  $\sim 313$  nm. A resonant laser beam provides Doppler laser cooling and state discrimination; a second laser beam repumps  $|\downarrow\rangle$  to  $|\uparrow\rangle$ . The optical dipole force (ODF) interaction is due to a pair of beams (derived from the same laser) with relative detuning  $\mu_R$ . The qubit splitting  $\Delta E_0/\hbar \sim 2\pi \times 124$  GHz. A low-phase-noise microwave source at 124 GHz provides full global control over spins.

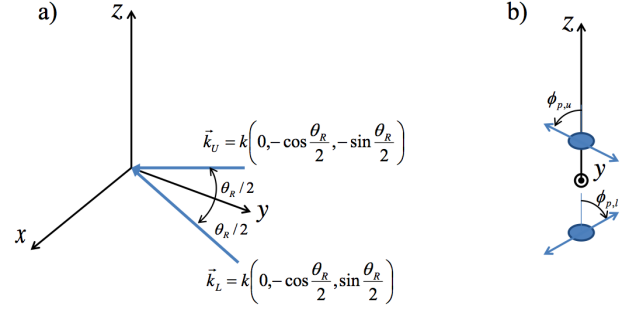


Figure 5. Sketch of optical dipole force (ODF) laser beam setup. (a) The ODF laser beams lie in the  $y$ - $z$  plane at angles  $\pm\theta_R/2$  with respect to the  $y$ -axis. (b) View looking in the  $-\hat{y}$  direction. The beams are linearly polarized but with different polarization angles relative to vertical polarization.

can be canceled with spin-echo techniques, but this requires that laser intensity fluctuations are small. Likewise, by adjusting the laser polarization to null the AC Stark shift from a single beam, we mitigated qubit decoherence due to laser intensity fluctuations. For the benchmarking measurements described here we did not actively stabilize (i.e., noise eat) the laser beam intensity.

The off-resonant laser beam frequency was detuned from the cycling transition ( $|\uparrow\rangle \rightarrow |P_{3/2}, m_J = 3/2\rangle$ ) by  $\Delta_R \simeq -63.8$  GHz. This gives detunings of  $+15.6$  GHz and  $-26.1$  GHz, respectively, from the  $|\uparrow\rangle \rightarrow |P_{3/2}, m_J = 1/2\rangle$  and  $|\downarrow\rangle \rightarrow |P_{3/2}, m_J = -1/2\rangle$  transitions (Fig. 4). Laser beam waists were  $w_z \simeq 110 \mu\text{m}$  in the vertical ( $z$ -direction) and  $w_x \simeq 1$  mm in the horizontal direction. Here we define the waist as the distance from the center of the beam over which the electric field intensity decreases by  $1/e^2$  (i.e.  $I(z) \sim e^{-(z/w_z)^2}$ ). With the small  $2.4^\circ$  incident angle each beam makes with respect to the plane of the crystal, this provided a uniform electric field with  $< 10\%$  intensity variation across ion crystal arrays with  $N < 250$ .

The ODF laser beams were linearly polarized at nonzero angles with respect to the  $\hat{z}$ -axis. Let

$$\begin{aligned} \vec{E}_U(\vec{r}, t) &= \hat{\epsilon}_U E_U \cos(\vec{k}_U \cdot \vec{r} - \omega_U t) \\ \vec{E}_L(\vec{r}, t) &= \hat{\epsilon}_L E_L \cos(\vec{k}_L \cdot \vec{r} - \omega_L t) \end{aligned} \quad (7)$$

denote the electric fields of the upper and lower ODF beams. If  $\phi_p$  is the angle of the laser beam electric-field polarization with respect to vertical polarization ( $\hat{\epsilon} \cdot \hat{x} = 0$ ), then the AC Stark shift of the qubit states when illuminated by a single beam can be written

$$\begin{aligned} \Delta_{\uparrow, acss} &= A_{\uparrow} \cos^2(\phi_p) + B_{\uparrow} \sin^2(\phi_p) \\ \Delta_{\downarrow, acss} &= A_{\downarrow} \cos^2(\phi_p) + B_{\downarrow} \sin^2(\phi_p) \end{aligned} \quad (8)$$

where  $A_{\uparrow}(A_{\downarrow})$  is the Stark shift of the  $|\uparrow\rangle(|\downarrow\rangle)$  state for a  $\pi$ -polarized beam ( $\hat{\epsilon}$  parallel to the  $\hat{z}$ -axis) and  $B_{\uparrow}(B_{\downarrow})$  is the Stark shift of the  $|\uparrow\rangle(|\downarrow\rangle)$  state for a  $\sigma$ -polarized beam ( $\hat{\epsilon}$  perpendicular to the  $\hat{z}$ -axis). (Here we neglect the small  $\sigma$  polarization ( $\propto \sin 2.4^\circ$ ) that exists when  $\phi_p = 0$ .) The Stark shift of the

qubit transition is

$$\Delta_{acss} = (A_{\uparrow} - A_{\downarrow}) \cos^2(\phi_p) + (B_{\uparrow} - B_{\downarrow}) \sin^2(\phi_p). \quad (9)$$

If  $A_{\uparrow} - A_{\downarrow}$  and  $B_{\uparrow} - B_{\downarrow}$  have opposite signs, there is an angle which makes  $\Delta_{acss} = 0$ . For a laser detuning of  $\Delta_R = -63.8$  GHz,  $\Delta_{acss} = 0$  at  $\phi_p \approx \pm 65^\circ$ .

With  $\Delta_{acss} = 0$  for each ODF laser beam, we exploit the freedom to choose their polarization in order to obtain a state-dependent force. Specifically, we choose  $\vec{E}_U$  to have a polarization given by  $\phi_{p,u} = 65^\circ$  and  $\vec{E}_L$  to have a polarization given by  $\phi_{p,l} = -65^\circ$ . In this case the interference term in the expression for the electric field intensity  $(\vec{E}_U + \vec{E}_L)^2$  produces a polarization gradient which results in spatially dependent AC Stark shifts

$$\begin{aligned} & (A_{\uparrow} \cos^2(\phi_p) - B_{\uparrow} \sin^2(\phi_p)) 2 \cos(\delta\vec{k} \cdot \vec{z} - \mu_R t) \\ & (A_{\downarrow} \cos^2(\phi_p) - B_{\downarrow} \sin^2(\phi_p)) 2 \cos(\delta\vec{k} \cdot \vec{z} - \mu_R t) \end{aligned} \quad (10)$$

for the qubit levels. Here  $\delta\vec{k} \equiv |\vec{k}_U - \vec{k}_L| = 2k \sin\left(\frac{\theta_R}{2}\right)$  is the wave vector difference between the two ODF laser beams,  $\mu_R = \omega_U - \omega_L$  is the ODF beat note, and  $\phi_p = |\phi_{p,u}| = |\phi_{p,l}|$ . The spatially dependent AC Stark shift produces a state-dependent force  $F_{\uparrow,\downarrow}(z,t) = F_{o\uparrow,\downarrow} \sin(\delta\vec{k} \cdot \vec{z} - \mu_R t)$  where

$$\begin{aligned} F_{o\uparrow} &= -2\delta k (A_{\uparrow} \cos^2(\phi_p) - B_{\uparrow} \sin^2(\phi_p)) \\ F_{o\downarrow} &= -2\delta k (A_{\downarrow} \cos^2(\phi_p) - B_{\downarrow} \sin^2(\phi_p)). \end{aligned} \quad (11)$$

In general  $F_{o\uparrow} \neq -F_{o\downarrow}$ . We operate at  $\Delta_R = -63.8$  GHz where for  $\Delta_{acss} = 0$  we also obtain  $F_{o\uparrow} = -F_{o\downarrow} \equiv F_o$

For a given  $\phi_{p,u}$ ,  $\phi_{p,l}$ , and  $\Delta_R$  we use straightforward atomic physics along with well known values for the energy levels and matrix elements of  ${}^9\text{Be}^+$  to calculate  $F_o$  as a function of the electric field intensity  $I_R = \frac{c\epsilon_0}{2} |E_L|^2 = \frac{c\epsilon_0}{2} |E_U|^2$  at the center of the laser beams. For  $\theta_R = 4.8^\circ$  and  $I_R = 1 \text{ W/cm}^2$ ,  $F_o = 1.4 \times 10^{-23} \text{ N}$ .

Stronger forces can be generated after experimental modification to our apparatus to permit  $\theta_R \approx 35^\circ$ . At this angle larger detunings  $\mu_R - \omega_1$  are required to satisfy Eq. 6 in Methods. With our definition  $H_I = \frac{1}{N} \sum_{i < j} J_{i,j} \hat{\sigma}_i^z \hat{\sigma}_j^z$ , the interaction strength between two ions  $i$  and  $j$  is  $J_{i,j}/N$ . Consider for example  $N = 217$  ions,  $\omega_r = 2\pi \times 45.6 \text{ kHz}$ , powers of  $I_R = 20 \text{ mW/beam}$  ( $12.5 \text{ W/cm}^2$ ) and  $\theta_R = 35^\circ$ . The spin-motion entanglement constraint is satisfied by a detuning of  $\mu_R - \omega_1 = 2\pi \times 100 \text{ kHz}$ . In this case we obtain  $J_{i,j}/(2\pi N) \sim (560 \text{ Hz})(d_0/d_{i,j})^{1.7}$ , where  $d_0 \sim 20 \mu\text{m}$  is the typical nearest neighbor separation.

### III. WAVEFRONT ALIGNMENT

The ODF laser beams produce a one dimensional (1D) optical lattice characterized by the effective wave vector  $\delta\vec{k}$  and beat note  $\mu_R$ . In Sec. II we assumed that  $\delta\vec{k} \parallel \hat{z}$ , or equivalently that the wavefronts of the lattice were aligned perpendicular to the  $\hat{z}$ -axis (magnetic field axis). If the wavefronts are not normal to the  $\hat{z}$ -axis as sketched in Fig. 6, then the time dependence of the ODF seen by an ion in the rotating frame

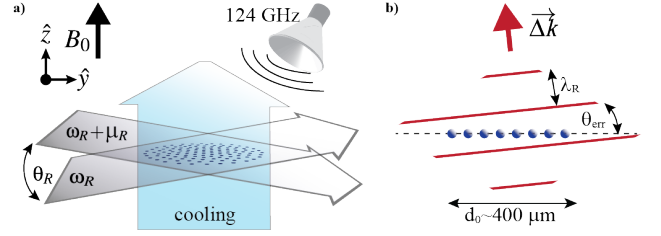


Figure 6. (a) Sketch of the ODF laser beam geometry used to generate the one dimensional (1D) traveling optical lattice. (b) Sketch of the 1D optical lattice wave fronts (red lines). These wave fronts need to be aligned with the ion planar array (represented by the blue dots). Here  $\lambda_R = 2\pi/|\delta\vec{k}| \approx 3.7 \mu\text{m}$  and  $\theta_{err}$  denotes the angle of misalignment.  $400 \mu\text{m}$  is the typical array diameter for  $N \sim 200$  ions. With the wavefront alignment technique discussed in the text we obtain  $\theta_{err} < 0.05^\circ$ .

depends on the  $(x,y)$  position of the ion. This complicates the effective spin-spin interactions generated by the ODF but can be adequately mitigated by careful alignment.

Alignment of the ODF laser beams is obtained by a technique that makes top-view images (images of the ion resonance fluorescence scattered along the magnetic field) from a single plane of ions sensitive to ODF wave front misalignment. For this measurement we set  $\mu_R = 0$  (stationary 1D lattice) and detune the frequency of the ODF laser beams approximately  $0.5 \text{ GHz}$  below the  $|\uparrow\rangle \rightarrow |^2P_{3/2} m_J = +3/2\rangle$  Doppler cooling transition. This small detuning generates sufficiently

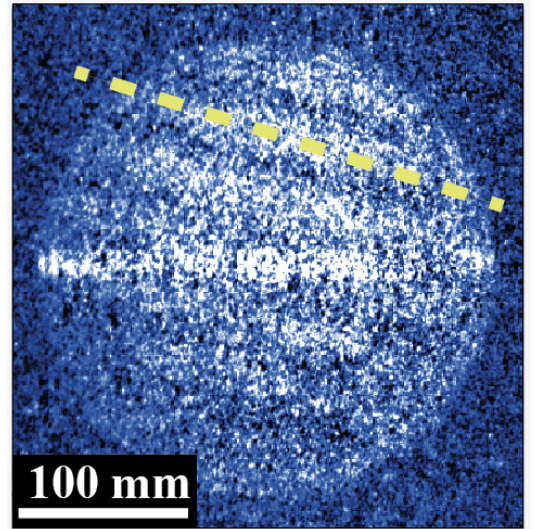


Figure 7. Top-view image of the spatially inhomogeneous fluorescence from a single ion plane produced by the AC Stark shift from a static ( $\mu_R = 0$ ) ODF lattice with misaligned wave fronts. Dark bands are regions of high standing wave electric field intensity (parallel to the dashed yellow line). The bright horizontal feature bisecting the center of the image is fluorescence from the weak Doppler laser cooling beam directed perpendicular to the magnetic field. The image was obtained by subtracting a background image with the ODF beams off (1 s integration).

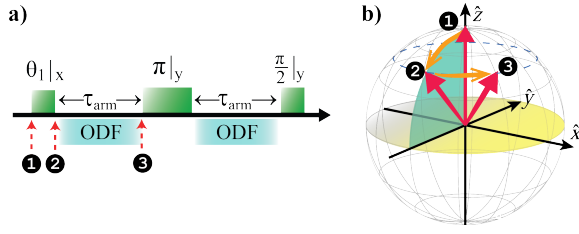


Figure 8. (a) Sequence used to measure spin precession due to the effective mean field generated by the engineered Ising interaction. The spins are initially prepared in  $|\uparrow\rangle$ . The first pulse rotates the spins by an angle  $\theta_1$  about an axis (defined to be the  $\hat{x}$ -axis in the rotating frame) in the equatorial plane. The subsequent  $\pi$  and  $\pi/2$  pulses occur about the  $\hat{y}$ -axis. (b) Evolution of a single spin prior to the application of the spin-echo  $\pi$ -pulse.

large AC Stark shifts on the cooling transition to measurably change the ion scatter rate from the Doppler cooling laser. With the Doppler cooling laser turned on and the ODF beams turned off, we observe a spatially uniform, time-averaged image of a rotating planar crystal. With the ODF beams on, ions located in regions of high electric field intensity at the antinodes of the optical lattice are Stark-shifted out of resonance with the Doppler cooling laser. This is the cause of the dark bands in the top-view image shown in Fig. 7. We adjust the ODF laser beams based on this real-time imaging to optimize their alignment. Improved alignment is indicated by a fringe pattern of longer wavelength. With this technique we have aligned the ODF wave fronts with the planar array to better than  $\sim 0.05^\circ$ .

The image in Fig. 7 is typical of what we obtain with 1 s integration duration. This indicates the 1D lattice was stable during the integration period and shows the phase stability of our 1D lattice of better than 1 s.

We note that direct fluorescence imaging of the 1D lattice, for example by tuning the ODF laser resonant with the Doppler cooling transition, is not viable. Even at low powers, resonantly scattered photons across the large horizontal waist of the ODF beams apply a large torque, causing the rotation frequency and radius of the array to rapidly change, typically driving the ions into orbits of very large radius.

We have also used phase coherent Doppler velocimetry to improve the ODF wavefront alignment [45]. But the top-view imaging technique discussed here and shown in Fig. 7 provides more information on the angle and direction of misalignment, which greatly improves the ODF-crystal alignment process.

#### IV. MODELING MEAN FIELD SPIN PRECESSION

For any spin  $j$ ,  $[\hat{\sigma}_j^z, \hat{H}_I] = 0$ , which implies  $\langle \hat{\sigma}_j^z \rangle =$  constant under application of  $\hat{H}_I$ . The Hamiltonian  $\hat{H}_I^{MF}$  describing the mean field response of spin  $j$  to the application  $\hat{H}_I$  is

obtained by expanding  $\hat{H}_I$  to first order in  $\widehat{\delta\sigma}_j^z \equiv \hat{\sigma}_j^z - \langle \hat{\sigma}_j^z \rangle$ :

$$\begin{aligned} \hat{H}_I^{MF} &= \frac{1}{N} \sum_{i < j} J_{i,j} \left( \langle \hat{\sigma}_i^z \rangle \widehat{\delta\sigma}_j^z + \langle \hat{\sigma}_j^z \rangle \widehat{\delta\sigma}_i^z \right) \\ &= \sum_{j=1}^N \frac{1}{N} \sum_{i, i \neq j} J_{i,j} \langle \hat{\sigma}_i^z \rangle \times \widehat{\delta\sigma}_j^z. \end{aligned} \quad (12)$$

Defining  $\bar{B}_j \equiv \frac{2}{N} \sum_{i, i \neq j} J_{i,j} \langle \hat{\sigma}_i^z \rangle$ ,  $\hat{H}_I^{MF}$  can be written

$$\hat{H}_I^{MF} = \sum_{j=1}^N \bar{B}_j \widehat{\delta\sigma}_j^z / 2. \quad (13)$$

The mean field Heisenberg equations of motion for spin  $\vec{\sigma}_k$  is obtained from the commutator of  $\vec{\sigma}_k$  and  $\hat{H}_I^{MF}$ . However, because  $\widehat{\delta\sigma}_j^z = \hat{\sigma}_j^z - \langle \hat{\sigma}_j^z \rangle$  and  $\langle \hat{\sigma}_j^z \rangle$  is a constant, it is clear that Eq. 13 describes spin precession about the z-axis at frequency  $\bar{B}_k$ . Our observable is the spin precession (in excess of ordinary Larmor precession) averaged over all the spins  $\frac{1}{N} \sum_{k=1}^N \bar{B}_k$ .

We use the spin-echo sequence in Fig. 8 to measure a precession proportional to the expectation value of the spin projection along  $\hat{z}$  ( $\langle \hat{\sigma}_i^z \rangle$ ). The spin-echo sequence minimizes contributions to spin precession that are not  $\propto \langle \hat{\sigma}_i^z \rangle$ . Specifically, the spin echo cancels a constant spin precession independent of  $\langle \hat{\sigma}_i^z \rangle$  (e.g., due to slow uncontrolled magnetic field fluctuations), but precession  $\propto \langle \hat{\sigma}_i^z \rangle$  coherently adds in the two arms of the sequence.

The first pulse sets  $\langle \hat{\sigma}_i^z \rangle = \cos \theta_1$ . The interaction  $\hat{H}_I$  is then applied by turning on the ODF laser beams for a period  $\tau_{arm}$ . During this interval  $\langle \hat{\sigma}_i^z \rangle$  is a constant and mean field theory predicts an average spin precession angle of  $2\bar{J} \cos(\theta_1) \cdot \tau_{arm}$ . The  $\pi$ -pulse changes  $\langle \hat{\sigma}_i^z \rangle \rightarrow -\cos(\theta_1)$  and the spin precession angle  $2\bar{J} \cos(\theta_1) \cdot \tau_{arm}$  to  $-2\bar{J} \cos(\theta_1) \cdot \tau_{arm}$ . At the end of the second  $\hat{H}_I$  interaction of duration  $\tau_{arm}$ , the total precession angle of the spins is  $-2\bar{J} \cos(\theta_1) \cdot 2\tau_{arm}$ . The final  $\pi/2$ -pulse is about an axis shifted by  $90^\circ$  from the first  $\theta_1$ -pulse. This pulse converts precession out of the initial  $\hat{y}\hat{z}$  plane into excursions above or below the equatorial plane of the Bloch sphere, which we measure.

The evolution operator of the measurement sequence  $\hat{U}_{seq}$  is obtained in a straight forward manner from the individual evolution operators from each segment of the sequence,

$$\hat{U}_{seq} = \hat{R}(\hat{y}, \frac{\pi}{2}) \cdot \hat{U}(\hat{H}_I^{MF}) \cdot \hat{R}(\hat{y}, \pi) \cdot \hat{U}(\hat{H}_I^{MF}) \cdot \hat{R}(\hat{x}, \theta_1). \quad (14)$$

Here  $\hat{R}(\hat{x}, \theta_1) = \begin{bmatrix} \cos(\theta_1/2) & -i \sin(\theta_1/2) \\ -i \sin(\theta_1/2) & \cos(\theta_1/2) \end{bmatrix}$ ,  $\hat{R}(\hat{y}, \pi) = \begin{bmatrix} 0 & -1 \\ 1 & 0 \end{bmatrix}$  and  $\hat{R}(\hat{y}, \frac{\pi}{2}) = \frac{\sqrt{2}}{2} \begin{bmatrix} 1 & -1 \\ 1 & 1 \end{bmatrix}$ . The mean field evolution is given by

$$\hat{U}(\hat{H}_I^{MF}) = \begin{bmatrix} \exp(-i\bar{J} \langle \hat{\sigma}_z \rangle \tau_{arm}) & 0 \\ 0 & \exp(i\bar{J} \langle \hat{\sigma}_z \rangle \tau_{arm}) \end{bmatrix} \quad (15)$$

where  $\langle \hat{\sigma}_z \rangle = \cos(\theta_1)$  in the first arm of the spin-echo sequence and  $\langle \hat{\sigma}_z \rangle = -\cos(\theta_1)$  in the second arm. At the end

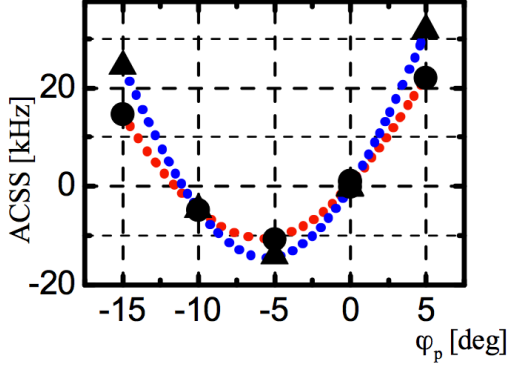


Figure 9. We determine  $I_R$  from the AC Stark shift of the qubit transition as a function of ODF laser beam polarization angle  $\phi_p$ . The triangles and filled circles are separate measurements done on the upper and lower ODF beams.  $I_R$  is determined independently for each ODF beam by a fit to Eq. 9. The error bars are smaller than the plot points.

of the sequence we detect the  $|\uparrow\rangle$  state probability. Explicit computation gives

$$|\langle \uparrow | \hat{U}_{seq} | \uparrow \rangle|^2 = \frac{1}{2} \{1 + \sin(\theta_1) \cdot \sin[2\bar{J} \cos(\theta_1) \cdot 2\tau_{arm}]\}. \quad (16)$$

## V. OPTICAL DIPOLE FORCE LASER INTENSITY CALIBRATION

The spin-spin couplings ( $\bar{J}$ ) measured here depend on the square of the ODF electric field intensity  $I_R$ . Therefore, careful calibration of the electric field intensity was important in benchmarking the strength of the interactions with mean-field predictions. We separately determined  $I_R$  for each beam by measuring the AC Stark shift of the qubit transition as a function of the laser beam polarization angle  $\phi_p$ , as shown in Fig. 9. The qubit transition frequency was measured by fitting for the center frequency of a Rabi-resonance profile. The polarization angle  $\phi_p$  was varied by rotating a  $\lambda/2$  plate. The Stark shift measurements were fit to Eq. 9, which provided values for  $A$  and  $B$  (Stark shifts for  $\pi$ -polarization and  $\sigma$ -polarization). Values for  $A$  and  $B$  were then used with atomic physics calculations to determine  $I_R$ , the electric field intensity of the ODF laser beams, with a fractional uncertainty of  $\sim 5\%$ . Frequent intensity calibration measurements were taken during a benchmarking run. Slow drifts to the laser intensity between calibrations added another 5% uncertainty, which we add in quadrature to the fitted uncertainty.

## VI. SPONTANEOUS EMISSION

Decoherence due to spontaneous emission has been well studied in this system [41]. The qubit levels are closed under spontaneous light scattering; that is, spontaneous light scattering does not optically pump the ion to a different ground

state level outside of the two qubit levels. We measure spin precession to benchmark the Ising interaction couplings. Equivalently we measure the evolution of off-diagonal coherences between the  $|\uparrow\rangle$  and  $|\downarrow\rangle$  levels. Spontaneous-emission-induced decay of these coherences is accurately modeled by Eq. (8) of Ref. [41]. We add this time dependence to the unitary evolution  $\hat{U}(\hat{H}_I^{MF})$  discussed in Sec. IV. This results in the expression

$$P(|\uparrow\rangle) = \frac{1}{2} (1 + \exp(-\Gamma \cdot 2\tau_{arm}) \sin(\theta_1) \sin(2\bar{J} \cos(\theta_1) \cdot 2\tau_{arm})), \quad (17)$$

where  $P(|\uparrow\rangle)$  is the probability of detecting a spin in  $|\uparrow\rangle$  at the end of the spin-echo sequence. The only difference with Eq. 16 is the factor  $\exp(-\Gamma \cdot 2\tau_{arm})$  due to the decay of the off-diagonal elements of the density matrix. Here  $\Gamma$  accounts for decoherence due to spontaneous emission. From [41],  $\Gamma = \frac{1}{2} (\Gamma_{Ram} + \Gamma_{el})$  has contributions from both Raman scattering and elastic Rayleigh scattering. A straightforward atomic physics calculation relates  $\Gamma$  to the ODF laser beam intensity  $I_R$ . In fits of Eq. 17 to the spin-precession measurements, we fix  $\Gamma$  at the value determined by the laser intensity calibrations. For  $\Delta_R = -63.8$  GHz,  $\phi_p = \pm 65.3^\circ$ , and  $I_R = 1$  W/cm<sup>2</sup>, we calculate  $\Gamma = 82$  s<sup>-1</sup>.

With our present set-up we can achieve  $\bar{J} \gg \Gamma$  for detunings  $|\mu_R - \omega_1| \lesssim 10$  kHz. For these detunings it will be possible to simulate quantum effects beyond mean field theory such as spin squeezing and spin-depolarization due to many-body interactions. For example we calculate that with 4 mW/beam and an ODF beatnote detuning of  $|\mu_R - \omega_1| = 2$  kHz,  $\bar{J} \sim 2\pi \times 0.5$  kHz and  $\Gamma/\bar{J} \sim 0.06$ . The potential spin squeezing due to this interaction is 5 dB, limited by spontaneous emission. For many simulations it will be desirable to achieve  $J/N \gg \Gamma$  where  $J$  is a nearest-neighbor coupling strength. ( $J \sim \bar{J}$  for small detunings  $|\mu_R - \omega_1|$ .) The most straightforward strategy to achieve this condition in our set-up appears to be to increase the angle  $\theta_R$  between the Raman beams. The ratio  $\bar{J}/\Gamma$  scales as  $\sin^2(\theta_R/2)$ . Therefore decoherence due to spontaneous emission can be dramatically reduced with an order of magnitude increase in  $\theta_R$ . We note that a large increase in  $\theta_R$  will require implementation of a sub-Doppler cooling scheme to remain in the Lamb-Dicke regime (see Sec. VII).

Different ODF laser detunings can likely help reduce the impact of spontaneous emission (with the complication that  $F_\uparrow \neq -F_\downarrow$ ), but very large laser detunings  $\Delta$  obtained by tuning the ODF laser beam frequencies outside the  $P_{1/2} - P_{3/2}$  manifold appear unlikely to help. This is because both the interaction strength and spontaneous emission scale as  $1/\Delta^2$  for our qubit, which is not a clock transition. For trapped-ion experiments in low magnetic field, the impact of spontaneous emission is typically minimized by tuning the ODF laser beam frequencies between the  $P_{1/2}$  and  $P_{3/2}$  manifolds. Because the  $^9\text{Be}^+$   $P$ -state fine structure (197 GHz) is comparable to the Zeeman splittings for our magnetic field (4.5 T), this approach does not significantly help. However, it can help with heavier mass ions (e.g.,  $\text{Mg}^+$ ). Reference [37] discusses a number of strategies that can minimize the impact of spontaneous emission when the  $P$ -state fine structure is large compared to the Zeeman interaction energy.

## VII. LAMB-DICKE CONFINEMENT

Throughout this manuscript we implicitly assume that the applied state-dependent force,  $F_{\uparrow,\downarrow}(z,t) = F_{o\uparrow,\downarrow} \cos(\delta k \cdot z - \mu_R t)$ , is constant across the spatial extent of an ion's wave function. Specifically, for a planar array located at  $z = 0$ , we assume the force on any ion is given by

$$F_{\uparrow,\downarrow}(z = 0, t) = F_{o\uparrow,\downarrow} \cos(\mu_R t). \quad (18)$$

The extent to which this is true is quantified by the parameter

$$\eta_{ind,i} \equiv \delta k \cdot z_{rms,i} \quad (19)$$

where  $z_{rms,i}$  is the root mean square (rms) axial extent of the wave function of ion  $i$  and  $\delta k \equiv 2\pi/\lambda_R$ , where  $\lambda_R = 3.7 \mu\text{m}$  for  $\theta_R = 4.8^\circ$ . We note that  $\eta_{ind,i}$  is a Lamb-Dicke *confinement* parameter for a individual ion (ind), not to be confused with the usual Lamb-Dicke parameter that is defined in terms of the ground-state wave function. In the limit that the Coulomb interaction energy between ions is a small perturbation to the axial potential of the trap, we can think of each ion as a single ion confined in the external trap potential, and approximate  $z_{rms,i} \simeq \sqrt{\frac{\hbar}{2M\omega_z}} \cdot \sqrt{2\bar{n} + 1}$ , where  $M$  is the mass of an individual ion. Recently we have completed careful axial temperature measurements for single-plane ion crystals [30]. We find  $\sim 1$  mK for the axial COM mode and  $\sim 0.4$  mK for the higher order transverse modes. For  $\omega_z = 2\pi \cdot 795$  kHz and conservatively assuming  $T = 1$  mK, we calculate  $\bar{n} \simeq 26$ ,  $z_{rms,i} \simeq 190$  nm, and  $\eta_{ind,i} \simeq 0.32$ .

For the benchmarking measurements described here we typically set the rotation frequency of the ion array about  $\sim 0.5$  kHz below the rotation frequency of the  $1 \leftrightarrow 2$  plane transition, determined experimentally from side-view images [21]. In this case, the spectrum of the transverse (axial) modes is broad, and we underestimate  $z_{rms,i}$  in the above analysis. An improved estimate of  $z_{rms,i}$  is obtained by summing the contributions from all of the transverse modes  $m$

$$z_{rms,i} = \left( \sum_m (b_{i,m})^2 \frac{\hbar}{2M\omega_m} (2\bar{n}_m + 1) \right)^{1/2}, \quad (20)$$

where  $\bar{n}_m \simeq k_B T / \hbar \omega_m$  is the mean thermal occupation of mode  $m$ . We assume here that every mode is characterized by the same temperature  $T$ . For  $N = 217$  and  $\omega_z = 2\pi \times 795$  kHz, the rotation frequency of the  $1 \leftrightarrow 2$  plane transition is  $\omega_r = 2\pi \times 46.1$  kHz. For  $\omega_R = 2\pi \times 45.6$  kHz, the spectrum of the axial modes ranges from 795 kHz down to 224 kHz. With Eq. 20 we calculate  $z_{rms,i} \simeq 520$  nm in the center of the array, decreasing to  $z_{rms,i} \simeq 250$  nm at the array edge, corresponding to  $\eta_{ind,i} \simeq 0.89$  for  $i$  near the array center and  $\eta_{ind,i} = 0.42$  for  $i$  near the array boundary.

The wavefront alignment discussed in a previous section can be viewed as achieving a type of Lamb-Dicke confinement. Let  $\theta_{err}$  denote the angle of misalignment between the planar array and the ODF 1D lattice (Fig. 6). Relative to the ODF lattice wavefronts, the rotation of the array produces a time-dependent shift in the axial position of an ion that can

be written as  $z(t) = R \sin(\theta_{err}) \sin(\omega_r t + \varphi)$ . Here  $R$  is the distance of the ion from the center of the array, and  $\varphi$  is determined by the azimuthal position of the ion in the array. The force on this ion is then

$$F_{\uparrow,\downarrow}(t) = F_{o\uparrow,\downarrow} \cos(\delta k R \sin \theta_{err} \cdot \sin(\omega_r t + \varphi) - \mu_R t). \quad (21)$$

For Eq. 21 to approximate Eq. 18, we desire  $\delta k \cdot 2R_P \sin \theta_{err} < 1$ , where  $R_P$  is the array radius. For  $R_P \simeq 200 \mu\text{m}$  (typical for  $N = 200$ ) and  $\theta_{err} \simeq 0.05^\circ$  (see Wavefront alignment section), we calculate  $\delta k \cdot 2R_P \sin \theta_{err} \approx 0.6$ .

## VIII. ION LATTICE CONFIGURATION AT EQUILIBRIUM AND TRANSVERSE NORMAL MODES

The ion equilibrium positions  $\vec{r}_i$  at zero temperature are calculated by minimizing the Euler-Lagrange action for the Penning trap potentials and the constraint that the ions lie in a plane (at  $z = 0$ ). The solution is a triangular lattice with a lattice constant that increases as one moves radially outward, that has a smooth unafaceted edge and exhibits a degradation in orientational order near the crystal perimeter. The transverse (along  $\hat{z}$ ) phonon modes ( $\omega_m, \vec{b}_m$ ) are obtained by Taylor expansion of the potential about the ion equilibrium positions  $\vec{r}_i$ . In-plane modes (along  $\hat{x}, \hat{y}$ ) can also be calculated, by solving a quadratic eigenvalue problem (due to inclusion of the centrifugal and Coriolis forces). The details of the transverse mode calculation is discussed in this section. The problem has also been solved for longitudinal and transverse modes in 1D (e.g., [46, 47]).

In general, the Lagrangian for a collection of  $N$  ions with charge  $q$  and mass  $M$  in an electromagnetic field  $\phi_i - \vec{A}(\vec{r}_i)$  is

$$L = T - V = \sum_{i=1}^N \left\{ \frac{1}{2} M \dot{\vec{r}}_i^2 - q \left( \phi_i - \vec{A}(\vec{r}_i) \cdot \dot{\vec{r}}_i \right) \right\}, \quad (22)$$

where  $\vec{r}_i = (r_i, \theta_i, z_i)$  is the coordinate of ion  $i$ . In a Penning trap, the field consists of a uniform magnetic field in the  $\hat{z}$ -direction ( $\vec{B} = B_0 \hat{z}$ ) and a harmonic trapping (anti-trapping) electric potential in the  $\hat{z}$ -direction ( $\hat{r}$ -direction) with frequency  $\omega_1$ . Lastly, an additional external time-dependent electric quadrupole potential (the ‘‘rotating wall’’, amplitude  $V_{wall}$  at the ions) is applied to control the ion's rotation frequency in the trap [48]. Thus, the scalar potential for ion  $i$  is

$$q\phi_i = \frac{q\phi_{trap,i} + q\phi_{wall,i} + q\phi_{Coulomb,i}}{2} = \frac{1}{2} M \omega_1^2 (z_i^2 - r_i^2/2) + V_{wall} r_i^2 \cos(2(\theta_i + \omega_r t)) + \frac{1}{2} k \sum_{j \neq k}^N q^2 / |\vec{r}_{j,k}|, \quad (23)$$

where the ion-ion separation is  $\vec{r}_{j,k} = \vec{r}_j - \vec{r}_k$  and  $k = 1/4\pi\epsilon_0$ . Since  $\vec{B}$  is uniform, the vector potential energy is

$$q\vec{A}(\vec{r}_i) = -\frac{q}{2} \vec{r}_i \times \vec{B}. \quad (24)$$

The position of the ions at equilibrium is calculated as follows. We move to a rotating frame where the ions' coordinates are stationary by using the coordinate transformation

$\vec{r}'_i = (r'_i, \theta'_i, z'_i) = (r_i, \theta + \omega_R t, z_i)$ , a counterclockwise rotation. The ions' equilibrium positions  $\vec{r}'_i$  can be found by solving the transformed Euler-Lagrange equations  $L'$ . To seed the numerical solution, we supply an initial guess for the 2D crystal: a regular, triangular lattice. Consistent convergence requires ion numbers  $N$  corresponding to closed shells (e.g.,  $N = 127$  has six closed shells). We find ion equilibrium positions that deviate from a perfect triangular lattice near the crystal periphery and which have an overall ellipticity due to  $V_{wall}$ .

Given  $\vec{r}'_i$ , the crystal's transverse eigenmodes can be calculated by Taylor expansion of the potential about the equilibrium positions  $\vec{r}'_i$ . The Lagrangian is

$$L' = \frac{1}{2} \sum_{i=1}^N M \dot{z}'_i \dot{z}'_i - \frac{1}{2} \sum_{i,j=1}^N K_{ij} z'_i z'_j \quad (25)$$

where  $z'_i$  is the axial displacement of  $i$ -th ion and  $K_{ij} = K_{ji}$  is the symmetric stiffness matrix evaluated for the equilibrium configuration as

$$K_{ij} = \begin{cases} M\omega_1^2 - \sum_{n=1}^N \frac{kq^2}{|z'_{ni}|^3} & i = j, n \neq i \\ \frac{kq^2}{|z'_{ij}|^3} & i \neq j \end{cases}. \quad (26)$$

By minimizing the action  $\delta \int dt L' = 0$  with respect to the rotating frame axial coordinates  $z'_i$ , we obtain  $N$  equations of motion

$$\ddot{z}'_i + \sum_{j=1}^N \frac{K_{ij}}{M} z'_j = 0, \text{ for } i = 1, 2, \dots, N. \quad (27)$$

Following standard normal mode analysis, the solution is obtained by calculating the eigenmodes of the matrix  $K_{ij}/M$ . The result is  $N$  eigenvalues  $\omega_m^2$ , for  $m = 1, 2, \dots, N$  (with corresponding frequencies  $\omega$ ).

## IX. LIMITS TO THE VALIDITY OF MEAN FIELD THEORY

Here we calculate the domain over which a mean field theory (MF) treatment of  $\hat{J}_z^2$  is valid. In the special case of uniform Ising coupling (e.g.,  $0 < \mu_R - \omega_1 \ll \omega_1 - \omega_2$ ), we have

$$\hat{H}_I = \frac{2\chi}{N} \left( \sum_{i=1}^N \hat{\sigma}_i^z / 2 \right) \left( \sum_{j=1}^N \hat{\sigma}_j^z / 2 \right) = \frac{2\chi}{N} \hat{J}_z^2, \quad (28)$$

where we have neglected a constant offset and  $\hat{J}_z = \sum_{i=1}^N \hat{\sigma}_i^z / 2$  is the  $z$ -component of the total composite spin of the system. The interaction strength  $\chi$  is independent of ion-ion separation and is given by

$$\chi \approx \frac{F_0^2}{\hbar 2M} \frac{1}{\mu_R^2 - \omega_1^2}. \quad (29)$$

We start each experiment with  $N$  spins all prepared in the  $|\uparrow\rangle$  state. Here we use the composite spin picture where this state is labeled  $|J = N/2, M_J = N/2\rangle$ . (Formally  $|J, M_J\rangle$  labels a state that is an eigenstate of  $\hat{J}^2$  and  $\hat{J}_z$  with eigenvalues  $J(J+1)$  and  $M_J$ , where  $\hat{J} = \sum_i \hat{\sigma}_i / 2$  is the total system spin.) The first pulse of the spin-precession measurement sequence rotates the composite Bloch vector by an angle  $\theta_1$ . After the rotation by  $\theta_1$  the state can be written as

$$|\psi\rangle = \sum_{M_J=-N/2}^{N/2} C(J, M_J) |J, M_J\rangle, \quad (30)$$

where the coefficients  $C(J, M_J)$  are significantly non-zero for a small range  $\Delta M_J$  centered on  $M_J^{(0)}$ , where  $M_J^{(0)} \approx \frac{N}{2} \cos \theta_1$ . For a coherent spin state,  $\Delta M_J \lesssim \sqrt{N}$ .

We want to establish that a  $\hat{J}_z^2$  interaction looks like

precession  $\propto M_J^{(0)}$ , at least over short durations. A precession by an angle  $\phi$  about the  $z$ -axis is obtained with the operation  $e^{-i\phi \hat{J}_z}$ ,

$$e^{-i\phi \hat{J}_z} |\psi\rangle = \sum_{M_J} C(J, M_J) e^{-i\phi \hat{J}_z} |J, M_J\rangle. \quad (31)$$

We measure expectation values of the total system spin  $\hat{J}$ . It is sufficient therefore to consider how these expectation values transform under the rotation  $e^{i\phi \hat{J}_z}$ ,

$$\langle \psi | \hat{J}_y | \psi \rangle \rightarrow \langle \psi | e^{i\phi \hat{J}_z} \hat{J}_y e^{-i\phi \hat{J}_z} | \psi \rangle. \quad (32)$$

For simplicity, only matrix elements of the total spin in the  $\hat{y}$ -direction  $\hat{J}_y$  are considered. Identical expressions are also obtained for  $\hat{J}_x$ .

$$\begin{aligned} & \langle \psi | \hat{J}_y | \psi \rangle \\ &= \sum_{M'_J, M_J} C(J, M'_J)^* C(J, M_J) \langle J, M'_J | \hat{J}_y | J, M_J \rangle \\ &= \sum_{M_J} \{ C(J, M_J - 1)^* C(J, M_J) \langle J, M_J - 1 | \hat{J}_y | J, M_J \rangle \\ & \quad + C(J, M_J + 1)^* C(J, M_J) \langle J, M_J + 1 | \hat{J}_y | J, M_J \rangle \}. \end{aligned} \quad (33)$$

The double sum is eliminated by making use of the property that  $\hat{J}_y$  has only non-zero matrix elements between states with  $M'_J - M_J = \pm 1$ .  $C(J, M_J \pm 1)$  can be defined to be 0 if  $M_J - 1 = -N/2 - 1$  or  $M_J + 1 = N/2 + 1$ . Similarly

$$\begin{aligned} & \langle \psi | e^{i\phi \hat{J}_z} \hat{J}_y e^{-i\phi \hat{J}_z} | \psi \rangle \\ &= \sum_{M'_J, M_J} C(J, M'_J)^* C(J, M_J) e^{iM'_J \phi} e^{-iM_J \phi} \langle J, M'_J | \hat{J}_y | J, M_J \rangle \\ &= \sum_{M_J} \{ C(J, M_J - 1)^* C(J, M_J) e^{-i\phi} \langle J, M_J - 1 | \hat{J}_y | J, M_J \rangle \\ & \quad + C(J, M_J + 1)^* C(J, M_J) e^{i\phi} \langle J, M_J + 1 | \hat{J}_y | J, M_J \rangle \}. \end{aligned} \quad (34)$$

This is to be compared with the same matrix element under the  $H_I = \frac{2\chi}{N} \hat{J}_z^2$  interaction,

$$\begin{aligned} & \langle \psi | e^{i \frac{2\chi}{N} \hat{J}_z^2 t} \hat{J}_y e^{-i \frac{2\chi}{N} \hat{J}_z^2 t} | \psi \rangle \\ &= \sum_{M'_J, M_J} C(J, M'_J)^* C(J, M_J) e^{i \frac{2\chi}{N} (M'_J)^2 t} e^{-i \frac{2\chi}{N} (M_J)^2 t} \langle J, M'_J | \hat{J}_y | J, M_J \rangle \\ &= \sum_{M_J} \{ C(J, M_J - 1)^* C(J, M_J) e^{-i \frac{2\chi}{N} (2M_J - 1)t} \langle J, M_J - 1 | \hat{J}_y | J, M_J \rangle \\ & \quad + C(J, M_J + 1)^* C(J, M_J) e^{i \frac{2\chi}{N} (2M_J + 1)t} \langle J, M_J + 1 | \hat{J}_y | J, M_J \rangle \}. \end{aligned} \quad (35)$$

Equation 35 approximates a rotation about the  $\hat{z}$ -axis (that is, approximates Eq. 34) if

$\frac{2\chi}{N}t(2M_J - 1) \approx \frac{2\chi}{N}t(2M_J + 1) \approx \frac{2\chi}{N}t \cdot 2M_J^{(0)}$  for all  $M_J$  for which  $C(J, M_J)$  is significantly non-zero. This is satisfied for short periods  $t$  satisfying  $\frac{2\chi}{N}t \cdot 2(\Delta M_J) \ll 1$ . For the initial coherent spin state,  $\Delta M_J \lesssim \sqrt{N}$ , which puts a limit

$$\chi t \ll \frac{\sqrt{N}}{4} \quad (36)$$

on the period  $t$  for which the  $\hat{J}_z^2$  interaction can be approximated as a precession  $\propto M_J^{(0)}$ . The precession frequency predicted by the  $\hat{J}_z^2$  analysis,

$\frac{2\chi}{N} \cdot 2M_J^{(0)} = \frac{2\chi}{N} \cdot 2\frac{N}{2} \cos \theta = 2\chi \cos \theta$ , is in agreement with the precession frequency predicted by the MF analysis.

Equation 36 provides a limit on the period for which the MF analysis is valid. We confirm this limit through explicit calculation of the spin precession benchmarking sequence for the  $\hat{H}_I = \frac{2\chi}{N} \hat{J}_z^2$  interaction with  $N = 5, 50$  and 100 spins. The exact calculation is possible because the system remains in the symmetric subspace (dimension of Hilbert space is  $2N + 1$ ). Figure 10(a) shows the results of the calculation for five spins. Reasonable agreement between the MF precession formula (Eq. 17 with  $\Gamma = 0$ ) and the exact calculation is obtained for  $\chi t = 0.2$ , but not for  $\chi t = 0.8$  and 1.6, as expected from Eq. 36. Figures 10(b) and 10(c) compare the exact calculation with the MF formula for  $N = 50$  and 100 spins. Excellent agreement between the MF formula and the exact calculation is obtained for  $\chi t = 0.2$  and 0.8. Some differences are observed at  $\chi t = 1.6$ . These differences decrease as  $N$  increases.

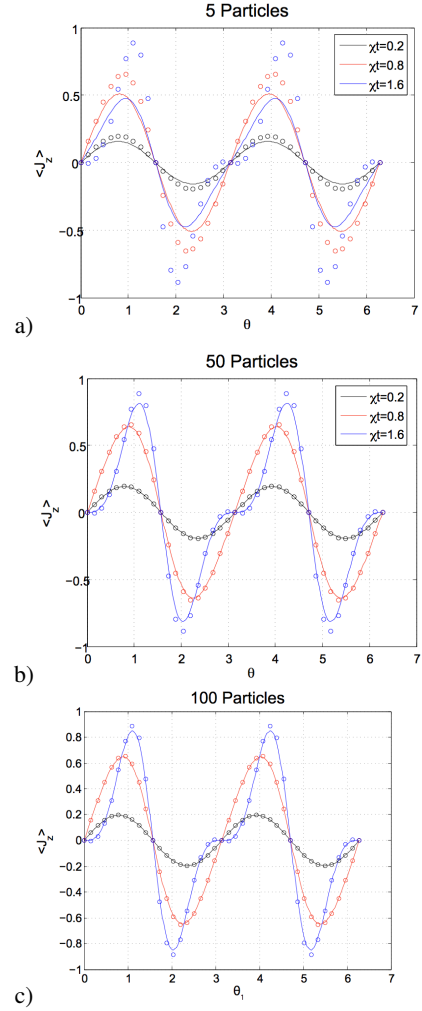


Figure 10.  $\langle \hat{J}_z^2 \rangle$  vs initial polar angle  $\theta_1$  for an initial coherent spin state of  $N$  spins.  $t = 2\tau_{arm}$  in the legend is the total interaction period. The solid line is the exact calculation. The open circles are from the MF precession formula (Eq. 17, with  $\Gamma = 0$ ). (a)  $N = 5$ . (b)  $N = 50$ . (c)  $N = 100$ .

- 
- [1] P. W. Anderson, *Science* **235**, 1196 (1987).  
[2] R. Moessner, S. L. Sondhi, and P. Chandra, *Physical Review Letters* **84**, 4457 (2000).  
[3] A. W. Sandvik, *Physical Review Letters* **104**, 137204 (2010).  
[4] R. Feynman, *Int. J. Theor. Phys.* **21**, 467 (1982).  
[5] I. Buluta and F. Nori, *Science* **326**, 108 (2009).  
[6] S. Trotzky, P. Cheinet, S. Fölling, M. Feld, U. Schnorrberger, A. M. Rey, A. Polkovnikov, E. A. Demler, M. D. Lukin, and I. Bloch, *Science* **319**, 295 (2008).  
[7] Y.-J. Lin, R. L. Compton, K. Jiménez-García, J. V. Porto, and I. B. Spielman, *Nature* **462**, 628 (2009).  
[8] G.-B. Jo, Y.-R. Lee, J.-H. Choi, C. A. Christensen, T. H. Kim, J. H. Thywissen, D. E. Pritchard, and W. Ketterle, *Science* **325**, 1521 (2009).  
[9] A. Friedenauer, H. Schmitz, J. T. Glueckert, D. Porras, and T. Schaetz, *Nature Physics* **4**, 757 (2008).  
[10] K. Kim, M.-S. Chang, S. Korenblit, R. Islam, E. E. Edwards, J. K. Freericks, G.-D. Lin, L.-M. Duan, and C. Monroe, *Nature* **465**, 590 (2010).  
[11] J. Simon, W. S. Bakr, R. Ma, M. E. Tai, P. M. Preiss, and M. Greiner, *Nature* **472**, 307 (2011).  
[12] X.-s. Ma, B. Dakic, W. Naylor, A. Zeilinger, and P. Walther, *Nature Physics* **7**, 399 (2011).  
[13] R. Islam, E. E. Edwards, K. Kim, S. Korenblit, C. Noh, H. Carmichael, G.-D. Lin, L.-M. Duan, C. C. J. Wang, J. K. Freericks, and C. Monroe, *Nature communications* **2**, 377 (2011).  
[14] B. P. Lanyon, C. Hempel, D. Nigg, M. Müller, R. Geritsma, F. Zähringer, P. Schindler, J. T. Barreiro, M. Rambach,

- G. Kirchmair, M. Hennrich, P. Zoller, R. Blatt, and C. F. Roos, *Science* **334**, 57 (2011).
- [15] S. Sachdev, *Quantum Phase Transitions*, Vol. 0 (Cambridge University Press, 2001) p. 353.
- [16] M. Kohno, O. a. Starykh, and L. Balents, *Nature Physics* **3**, 790 (2007).
- [17] C. Varney, K. Sun, V. Galitski, and M. Rigol, *Physical Review Letters* **107**, 077201 (2011).
- [18] B. G. Levi, *Physics Today* **60**, 16 (2007).
- [19] J. S. Helton, K. Matan, M. P. Shores, E. a. Nytko, B. M. Bartlett, Y. Yoshida, Y. Takano, A. Suslov, Y. Qiu, J.-H. Chung, D. G. Nocera, and Y. S. Lee, *Physical Review Letters* **98**, 107204 (2007).
- [20] L. Balents, *Nature* **464**, 199 (2010).
- [21] T. Mitchell, J. J. Bollinger, D. Dubin, X. Huang, W. M. Itano, and R. Baughman, *Science (New York, N.Y.)* **282**, 1290 (1998).
- [22] M. Lewenstein, A. Sanpera, V. Ahufinger, B. Damski, A. Sen(De), and U. Sen, *Advances in Physics* **56**, 243 (2007).
- [23] I. Bloch and W. Zwerger, *Reviews of Modern Physics* **80**, 885 (2008).
- [24] T. Rosenband, D. B. Hume, P. O. Schmidt, C. W. Chou, A. Brusch, L. Lorini, W. H. Oskay, R. E. Drullinger, T. M. Fortier, J. E. Stalnaker, S. a. Diddams, W. C. Swann, N. R. Newbury, W. M. Itano, D. J. Wineland, and J. C. Bergquist, *Science (New York, N.Y.)* **319**, 1808 (2008).
- [25] R. Schmied, J. H. Wesenberg, and D. Leibfried, *Physical Review Letters* **102**, 233002 (2009).
- [26] M. J. Biercuk, H. Uys, A. P. VanDevender, N. Shiga, W. M. Itano, and J. J. Bollinger, *Quantum Information and Computation* **9**, 920 (2009).
- [27] D. Leibfried, B. DeMarco, V. Meyer, D. Lucas, M. Barrett, J. W. Britton, W. M. Itano, B. M. Jelenkovic, C. Langer, T. Rosenband, and D. J. Wineland, *Nature* **422**, 412 (2003).
- [28] D. Porras and J. Cirac, *Physical Review Letters* **96**, 250501 (2006).
- [29] K. Kim, M.-S. Chang, R. Islam, S. Korenblit, L.-M. Duan, and C. Monroe, *Physical Review Letters* **103**, 120502 (2009).
- [30] B. C. Sawyer, J. W. Britton, A. C. Keith, C. C. J. Wang, J. K. Freericks, H. Uys, M. J. Biercuk, and J. J. Bollinger, *Physical Review Letters* (2012), arXiv:arXiv:1201.4415v1.
- [31] L. Brewer, J. Prestage, J. J. Bollinger, W. M. Itano, D. Larson, and D. J. Wineland, *Physical Review A* **38**, 859 (1988).
- [32] D. H. E. Dubin and T. M. O Neil, *Reviews of Modern Physics* **71**, 87 (1999).
- [33] D. Porras and J. I. Cirac, *Physical Review Letters* **92**, 1 (2004).
- [34] I. Buluta, M. Kitaoka, S. Georgescu, and S. Hasegawa, *Physical Review A* **77**, 1 (2008).
- [35] J. Taylor and T. Calarco, *Physical Review A* **78** (2008), 10.1103/PhysRevA.78.062331.
- [36] P. Zou, J. Xu, W. Song, and S.-L. Zhu, *Physics Letters A* **374**, 1425 (2010).
- [37] J. Baltrusch, A. Negretti, J. Taylor, and T. Calarco, *Physical Review A* **83**, 042319 (2011).
- [38] M. J. Biercuk, H. Uys, A. P. VanDevender, N. Shiga, W. M. Itano, and J. J. Bollinger, *Nature* **458**, 996 (2009).
- [39] M. J. Biercuk, H. Uys, A. P. VanDevender, N. Shiga, W. M. Itano, and J. J. Bollinger, *Physical Review A* **79**, 062324 (2009).
- [40] H. Uys, M. J. Biercuk, and J. J. Bollinger, *Physical Review Letters* **103**, 40501 (2009).
- [41] H. Uys, M. J. Biercuk, A. P. VanDevender, C. Ospelkaus, D. Meiser, R. Ozeri, and J. J. Bollinger, *Physical Review Letters* **105**, 200401 (2010).
- [42] W. M. Itano and D. J. Wineland, *Physical Review A* **24**, 1364 (1981).
- [43] T. B. Mitchell, J. J. Bollinger, W. M. Itano, and D. H. E. Dubin, *Physical Review Letters* **87**, 183001 (2001).
- [44] W. M. Itano and D. Leibfried, *Journal Of Research Of The National Institute Of Standards And Technology* **103** (1998).
- [45] M. J. Biercuk, H. Uys, J. W. Britton, A. P. VanDevender, and J. J. Bollinger, *Optics Express* **19**, 10304 (2011).
- [46] D. James, *Applied Physics B: Lasers and Optics* **66**, 181 (1998).
- [47] C. Marquet, F. Schmidt-Kaler, and D. James, *Applied Physics B: Lasers and Optics* **76**, 199 (2003).
- [48] J. J. Bollinger, T. B. Mitchell, X.-P. Huang, W. M. Itano, J. N. Tan, B. M. Jelenkovic, and D. J. Wineland, *Physics of Plasmas* **7**, 7 (2000).