

CMSWave to GenCade

Rusty Permenter

Research Hydraulic Engineer

Coastal Hydraulics Engineer

10/18/2012



Report Documentation Page

Form Approved
OMB No. 0704-0188

Public reporting burden for the collection of information is estimated to average 1 hour per response, including the time for reviewing instructions, searching existing data sources, gathering and maintaining the data needed, and completing and reviewing the collection of information. Send comments regarding this burden estimate or any other aspect of this collection of information, including suggestions for reducing this burden, to Washington Headquarters Services, Directorate for Information Operations and Reports, 1215 Jefferson Davis Highway, Suite 1204, Arlington VA 22202-4302. Respondents should be aware that notwithstanding any other provision of law, no person shall be subject to a penalty for failing to comply with a collection of information if it does not display a currently valid OMB control number.

1. REPORT DATE 18 OCT 2012	2. REPORT TYPE	3. DATES COVERED 00-00-2012 to 00-00-2012			
4. TITLE AND SUBTITLE CMSWave to GenCade		5a. CONTRACT NUMBER			
		5b. GRANT NUMBER			
		5c. PROGRAM ELEMENT NUMBER			
6. AUTHOR(S)		5d. PROJECT NUMBER			
		5e. TASK NUMBER			
		5f. WORK UNIT NUMBER			
7. PERFORMING ORGANIZATION NAME(S) AND ADDRESS(ES) U.S. Army Corps of Engineers,U.S. Army Engineer Research and Development Center,3909 Halls Ferry Road,Vicksburg,MS,39180-6199		8. PERFORMING ORGANIZATION REPORT NUMBER			
9. SPONSORING/MONITORING AGENCY NAME(S) AND ADDRESS(ES)		10. SPONSOR/MONITOR'S ACRONYM(S)			
		11. SPONSOR/MONITOR'S REPORT NUMBER(S)			
12. DISTRIBUTION/AVAILABILITY STATEMENT Approved for public release; distribution unlimited					
13. SUPPLEMENTARY NOTES GenCade Webinar, Coastal Inlets Research Program, 16-18 October 2012.					
14. ABSTRACT					
15. SUBJECT TERMS					
16. SECURITY CLASSIFICATION OF:			17. LIMITATION OF ABSTRACT Same as Report (SAR)	18. NUMBER OF PAGES 20	19a. NAME OF RESPONSIBLE PERSON
a. REPORT unclassified	b. ABSTRACT unclassified	c. THIS PAGE unclassified			

What is it?

- Tool to allow use of CMS-Wave output as wave stations within GenCade
 - ▶ converts CMS-Wave observation stations to .map file usable within SMS
 - ▶ Inserts wave stations into GenCade files



CMS-Wave

- CMS-Wave is a nearshore spectral wave model
- Allows for wave modeling in and around inlets
- Can use save stations in order to monitor certain grid locations.
- Additional features include grid nesting, wave-wave interaction, and wave overtopping

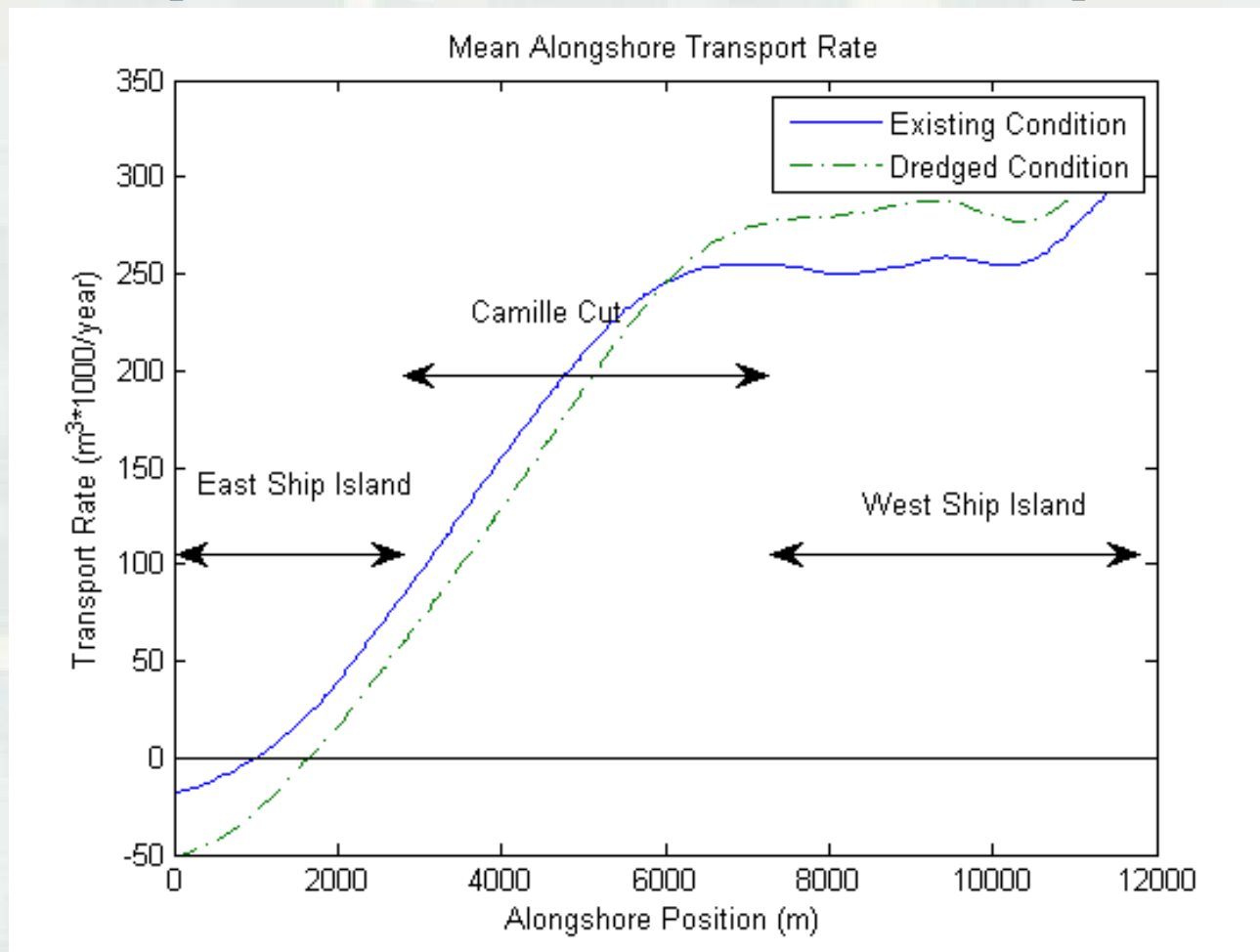


Purpose

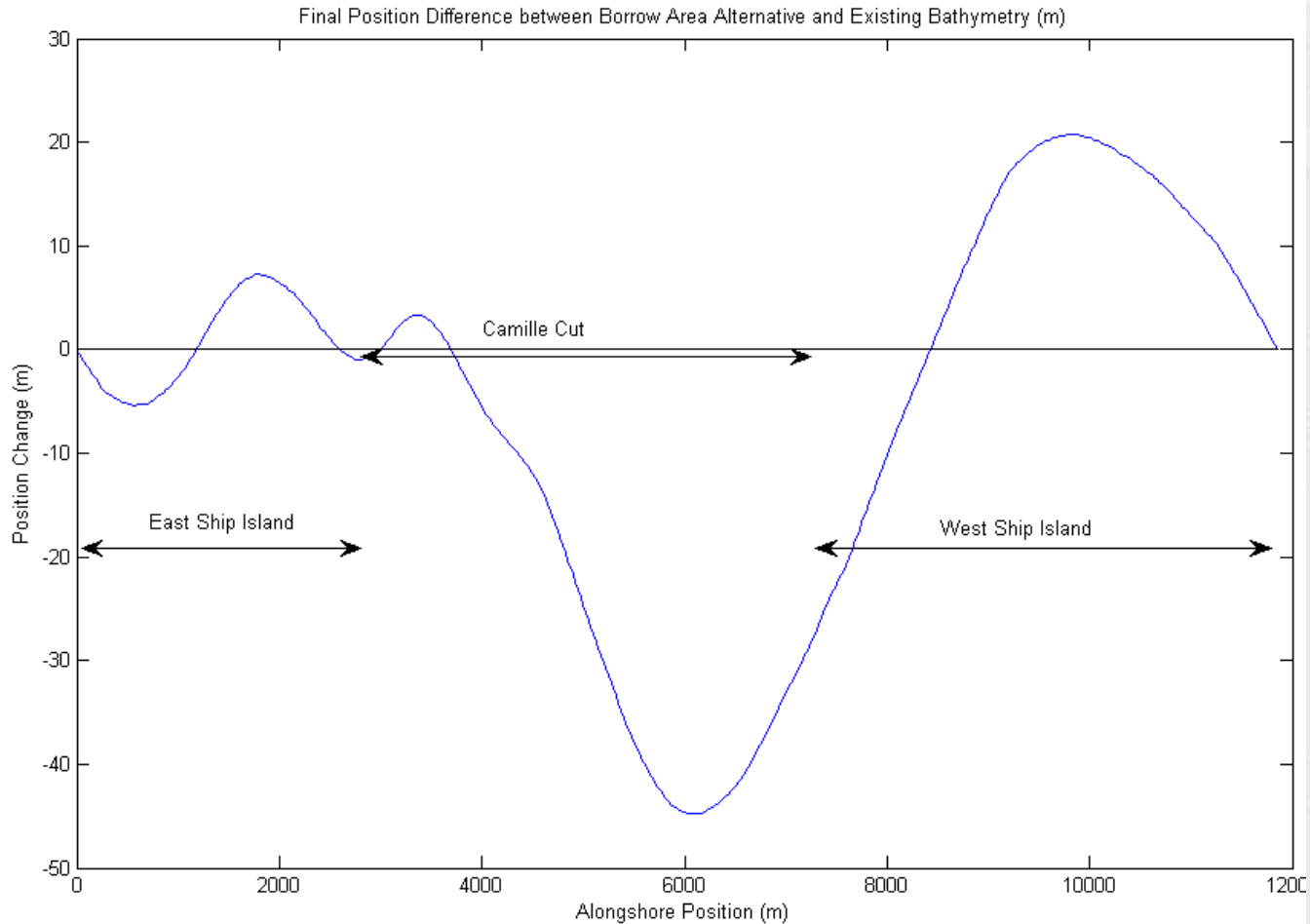
- Accounts for presence of nearshore bathymetry in model
- Allows for sensitivity analysis of various projected bathymetries
 - ▶ Used to determine optimal location of borrow areas



Ship Island Mean Transport



Ship Island Mean Transport



Developing Wave Spectra

- Waves may be inputted into CMS-Wave as either an historical time series or as a set of representative wave conditions
- Waves must be binned prior to use within CMS-Wave for a set of wave conditions



Developing Wave Spectra

- In order to reduce computation time waves can be binned by height, period and direction
- Waves can also be divided into seasonal distributions of each characteristic binned event
- Spectrum can then be generated by inserting representative wave conditions into CMS-Wave



Binning Wave Data

- Steps for Binning
 - ▶ Decide bin limits
 - ▶ Find average H,T, and Direction for each bin
 - ▶ Determine percent occurrence for each binned event
 - ▶ Write percent occurrence file for input into cms2map executable



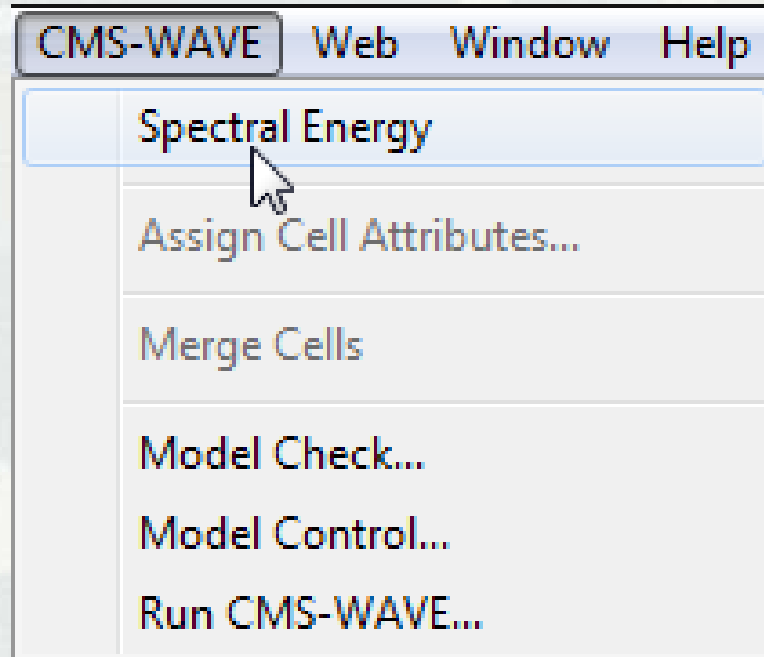
Percent Occurrence Guidelines

- Rows represent one wave event
- Percent occurrence for each sequential time period are written in each row separated by spaces

```
percentoccurrence_4timebins - Notepad
File Edit Format View Help
0.0528752628558970 0.0672888523024557 0.0535945735943816 0.0762413112472657
0.0451365708859299 0.1371525131027160 0.1072260446781500 0.1104848713332030
0.0012934453929916 0.2742178015873390 0.0051056620896014 0.1393830909300680
0.0809046938668949 0.0708873242125898 0.0916182194312626 0.1365897624892530
0.0887340398371999 0.1170064256440560 0.1106573894460230 0.0636021450727215
0.0607302893617145 0.0496596235895524 0.0627400008055647 0.0568700862431684
0.0908030675868227 0.0326313693889599 0.0630138466075962 0.1135517164166210
0.1055038340183630 0.4305918985721580 0.0548577431851331 0.0590465242243456
0.3459094101966680 0.0700804195504583 0.0695069771506103 0.3545031931022640
0.0411729876178872 0.2319026811846420 0.0839382933345983 0.3729860378628720
0.1360889817740770 0.2130845354636010 0.1373886713474470 0.0534378114148751
0.0937580370844784 0.0327006505251240 0.0185286279078678 0.1350126844825300
0.0549463432824445 0.0022362157942509 0.0980486126654472 0.0647688282578574
0.3141671681543480 0.0203062064238893 0.1148179453180370 0.1307086801037260
0.1835725273540040 0.1703790721381320 0.1567158889001110 0.2093325116077530
0.1089515963664540 0.0945905721013026 0.1066453437221800 0.0598124878100629
0.0677772502263402 0.0330151903410263 0.0346619916758676 0.0145455677567659
0.0362311283932149 0.0652591456929009 0.0470968055549323 0.1414129203589520
0.0076723811004786 0.0732983098800456 0.0676011910508269 0.0614281179686489
0.059342272222333 0.0627725064903382 0.0175664457519161 0.0303187755355124
0.0922391382088376 0.0784979202897292 0.0976488656828982 0.0916140758185350
0.3240537532254040 0.0334099996883209 0.1055895502716750 0.2169466968146000
0.0764665064330371 0.2308792294534000 0.1735004490385160 0.2591538150750460
0.1019056292593170 0.0249938350471738 0.0730247686212813 0.0400757670722281
0.0865887622753349 0.1186055899794200 0.0826956482728636 0.0021099994723813
0.0759877206111515 0.1158255118836340 0.1207603421063280 0.1374264253988860
```



Developing Wave Spectra



Developing Wave Spectra

Cartesian Grid Module Depth

8.8
7.6
6.4
5.2
4.0
2.8

Create Spectral Energy Grid

Frequency Distribution

Number: 30

Delta: 0.01 Hz

Minimum: 0.04 Hz

Maximum: 0.33 Hz

Angle Distribution

Number: 35

Delta: 5.0 deg

Minimum: -85.0 deg

Maximum: 85.0 deg

Buttons: Help..., OK, Cancel

Spectral Energy

Spectral Manager

Create Grid Generate Spectra

Import Spectra Export Spectra

New_Spectral_Grid

Select Spectral Grid...

Integration Plots

Frequency

Direction

Help...

Spectral Viewer

View: Polar Energy: 0.0

Spectral Energy

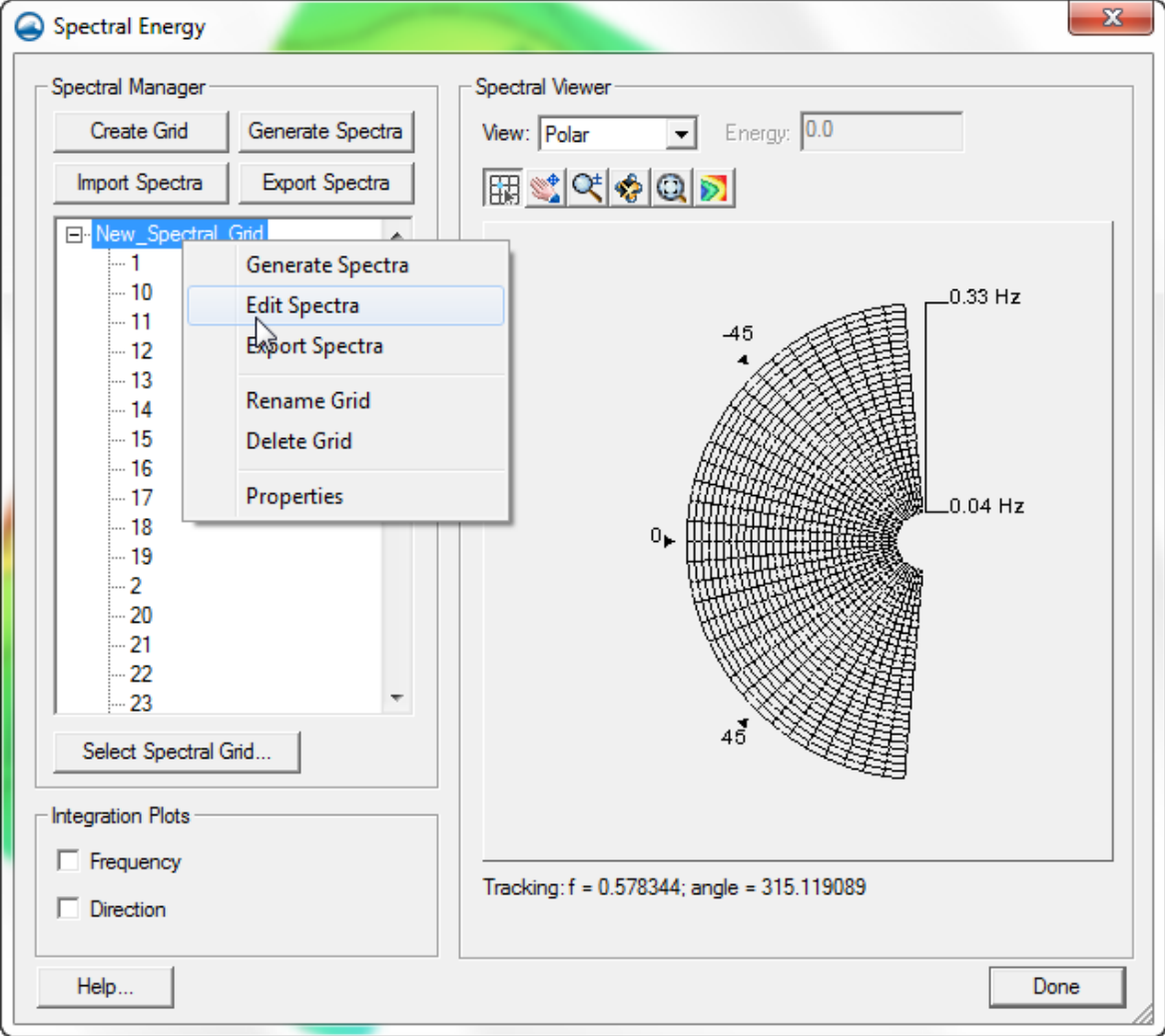
- 20.4
- 15.8
- 11.2
- 6.6
- 2.0

Tracking: f = 0.578344; angle = 315.119089

Done



Developing Wave Spectra



Developing Wave Spectra

Edit Spectra

Parameter Settings

Generation Method: TMA (Shallow Water)

Replace Old Spectra

Directional Spreading Distribution:

Wrapped Normal

Cosine Power

Seaward Boundary Depth:

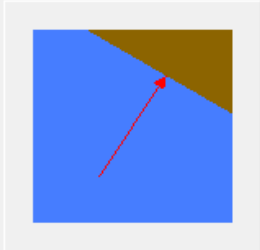
Specify once for all spectra

0.001 m

Specify for each spectrum

Angle Settings

Projection: Shore Normal



Spectral Parameters

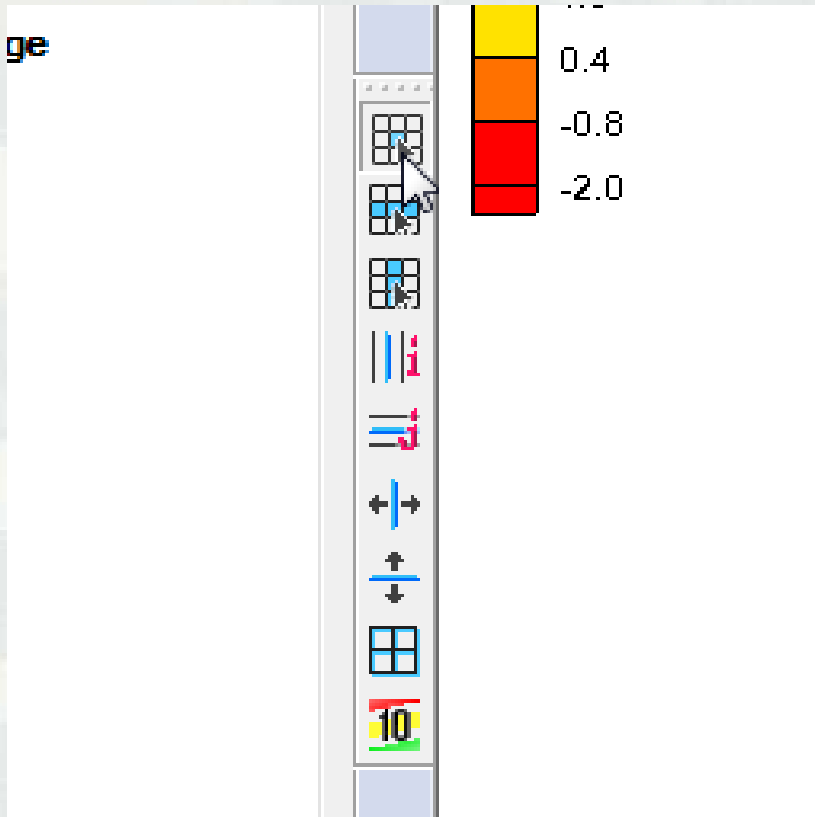
	Index	Angle (deg)	Hs (m)	Tp (s)	Gamma	nn	Gauge Depth (m)
1	1	-3.436	4.48	11.11	3.3	4	7.0
2	10	-11.152	4.48	12.5	3.3	4	7.0
3	11	-12.952	4.442	12.5	3.3	4	7.0
4	12	-5.574	4.414	11.11	3.3	4	7.0
5	13	-13.222	4.315	12.5	3.3	4	7.0
6	14	-7.64	4.268	11.11	3.3	4	7.0
7	15	-11.924	4.215	12.5	3.3	4	7.0
8	16	-9.851	4.207	11.11	3.3	4	7.0
9	17	-13.438	4.197	12.5	3.3	4	7.0

Import Import from GenCode Export Spectral Defaults >>

Help... Edit Cancel



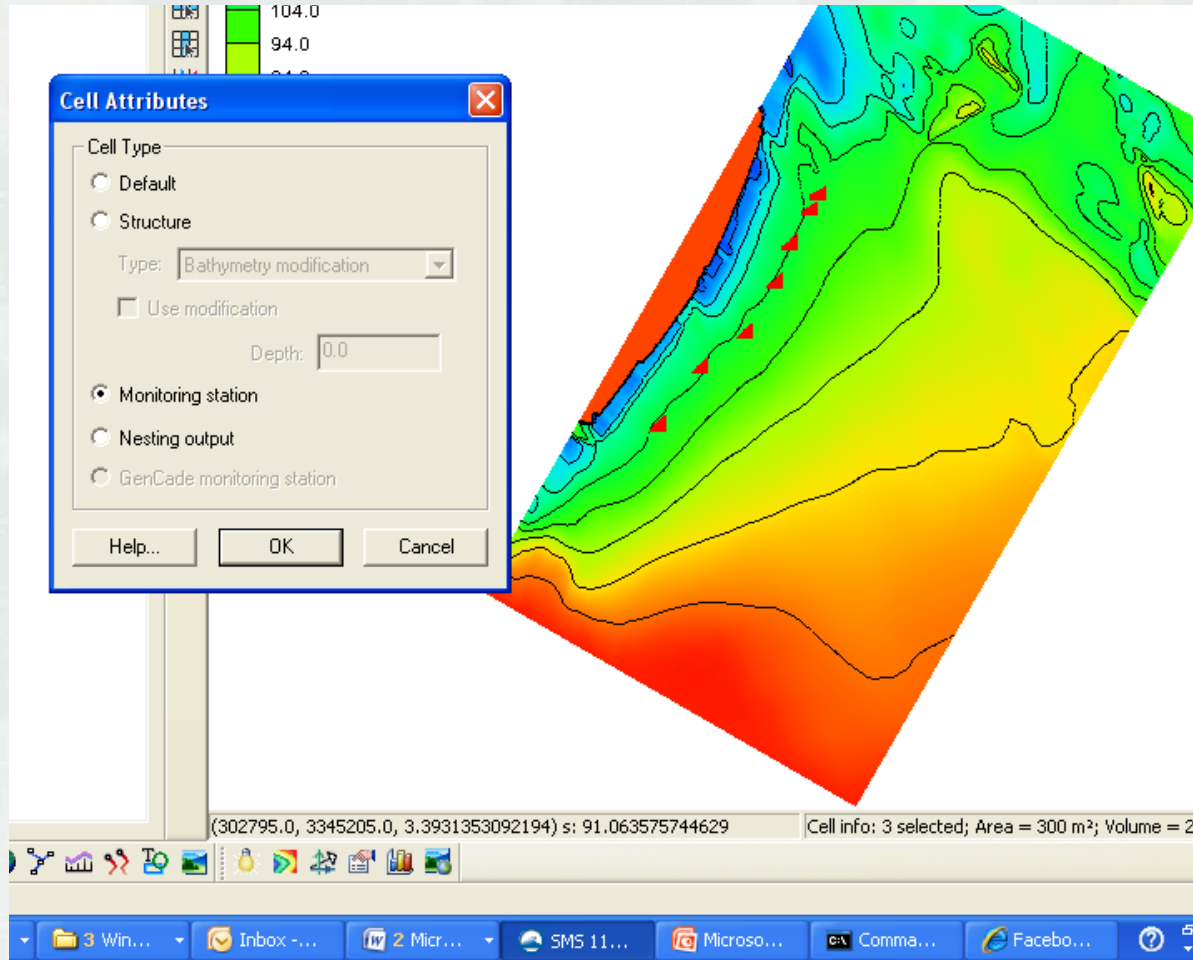
Creating Observation Points



- Click on select cell button
- Hold Shift key while selecting multiple save stations
- Right click on screen and select Cell Attributes tab



Creating Observation Points



Writing .ctrl for CMS2MAP

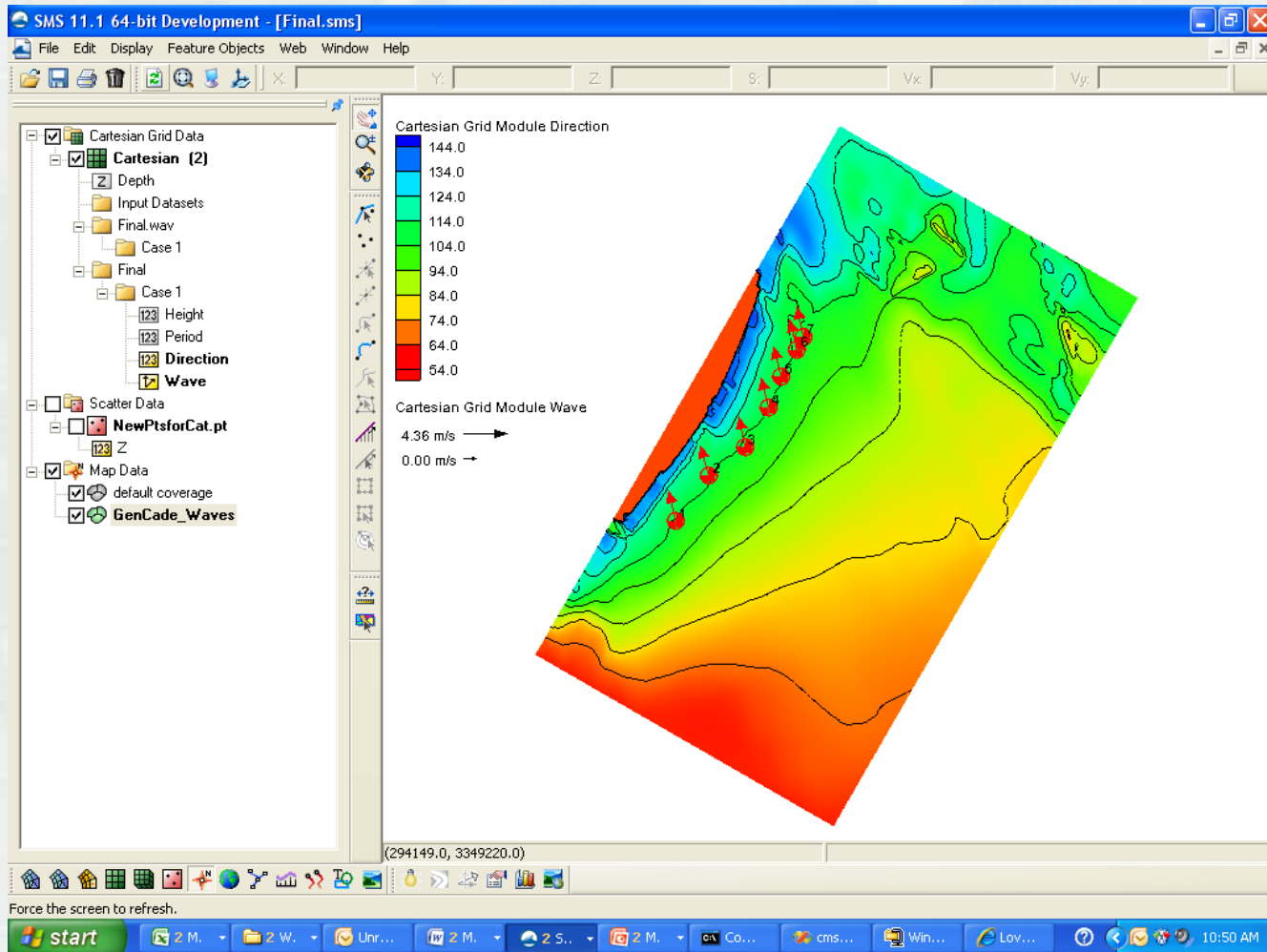
- The .ctrl file contains the cards necessary for CMS2MAP to write to either an existing GenCade grid or a .map file readable in SMS



Writing .ctrl for CMS2MAP

Control Card	Description	Default Value
SIMFILE:	CMS-Wave control file (*.sim):	<i>Required Input</i>
STDFILE:	CMS-Wave options file (*.std):	<i>Required Input</i>
DEPFILE:	CMS-Wave depth file (*.dep):	<i>Required Input</i>
SELHTSOUTFILE:	CMS-Wave station output file (selhts.out):	<i>Required Input</i>
CMSTSFLAG:	Flag for CMS to GenCade conversion mode: <1> = time-series (process-based) mode ... (1 CMS wave event → 1 GenCade Wave) <0> = steady state mode..... (1 CMS wave event → Many GenCade Waves)	1
FREQFILE:	[if CMSTSFLAG = 0] → % Frequency of Occurrence file (ASCII file: 1 row per CMS-Wave event x 1 column per time period to distribute output over)	<i>Required Input if CMSTSFLAG = 0</i>
NTIMEBINS:	[if CMSTSFLAG = 0] → Number of time periods to distribute output time series over	1
RANDOMFLAG:	[if CMSTSFLAG = 0] → Flag for random temporal distribution: <0> = same order as input wave events <1> = randomly distributed	0
FORMATOUT:	Flag for output format: <SMS_Map_Wave_File> = SMS Map File; <GenCade_Wave_File> = GenCade Wave Files	SMS_Map_Wave_File
MAPFILE:	[if FORMATOUT = SMS_Map_Wave_File] → Output Time Series SMS *.map file	GenCade_SMS.map
STARTDATE:	Output time series start date <yyyymmddHHMMSS>	19000101000000
TIMESTEPOUT:	Output time series timestep (hours)	3.0
TSOUTLENGTH:	Output time series length (hours)	8760.0 (1 year)
GENFILEIN:	[if FORMATOUT = GenCade_Wave_File] → <Optional> Existing GenCade Control Filename	GenCade_waves.gen
X0:	[if GENFILEIN not supplied] → GenCade Grid X-Origin	0.0
Y0:	[if GENFILEIN not supplied] → GenCade Grid Y-Origin	0.0
AZIMUTHGEN:	[if GENFILEIN not supplied] → <Optional> GenCade Grid Azimuth	Same as CMS-Wave
NX:	[if GENFILEIN not supplied] → Number of GenCade Grid Cells	0
DX:	[if GENFILEIN not supplied] → GenCade Grid Cell Resolution/Width	0.0

SMS Wave Stations



Future Work

- Finalize binning code to allow binning for seasonal distributions
- Write .eng files for use in CMS-Wave

