

FINAL

ENVIRONMENTAL ASSESSMENT (EA)

FOR

REPLACEMENT OF THE KENNEL FACILITY (Building 949)

GHLN 11-6002

F. E. WARREN AIR FORCE BASE, WYOMING

January 2012

Prepared by: Booz Allen Hamilton

90 CES/CEAN, Francis E. Warren AFB, Wyoming
Point of Contact: Travis Beckwith, (307) 773-3667

Report Documentation Page

Form Approved
OMB No. 0704-0188

Public reporting burden for the collection of information is estimated to average 1 hour per response, including the time for reviewing instructions, searching existing data sources, gathering and maintaining the data needed, and completing and reviewing the collection of information. Send comments regarding this burden estimate or any other aspect of this collection of information, including suggestions for reducing this burden, to Washington Headquarters Services, Directorate for Information Operations and Reports, 1215 Jefferson Davis Highway, Suite 1204, Arlington VA 22202-4302. Respondents should be aware that notwithstanding any other provision of law, no person shall be subject to a penalty for failing to comply with a collection of information if it does not display a currently valid OMB control number.

1. REPORT DATE JAN 2012		2. REPORT TYPE		3. DATES COVERED 00-00-2012 to 00-00-2012	
4. TITLE AND SUBTITLE Final Environmental Assessment (EA) for Replacement of the Kennel Facility (Building 949) GHLN 11-6002 F.E. Warren Air Force Base, Wyoming				5a. CONTRACT NUMBER	
				5b. GRANT NUMBER	
				5c. PROGRAM ELEMENT NUMBER	
6. AUTHOR(S)				5d. PROJECT NUMBER	
				5e. TASK NUMBER	
				5f. WORK UNIT NUMBER	
7. PERFORMING ORGANIZATION NAME(S) AND ADDRESS(ES) Booz Allen Hamilton, 8283 Greensboro Drive, McLean, VA, 22102				8. PERFORMING ORGANIZATION REPORT NUMBER	
9. SPONSORING/MONITORING AGENCY NAME(S) AND ADDRESS(ES)				10. SPONSOR/MONITOR'S ACRONYM(S)	
				11. SPONSOR/MONITOR'S REPORT NUMBER(S)	
12. DISTRIBUTION/AVAILABILITY STATEMENT Approved for public release; distribution unlimited					
13. SUPPLEMENTARY NOTES					
14. ABSTRACT					
15. SUBJECT TERMS					
16. SECURITY CLASSIFICATION OF:			17. LIMITATION OF ABSTRACT Same as Report (SAR)	18. NUMBER OF PAGES 27	19a. NAME OF RESPONSIBLE PERSON
a. REPORT unclassified	b. ABSTRACT unclassified	c. THIS PAGE unclassified			

Table of Contents

1. INTRODUCTION	4
2. PURPOSE AND NEED FOR ACTION	4
3. SELECTION CRITERIA	4
3.1. Location	4
3.2. Size	4
3.3. Infrastructure	4
3.4. Security	5
4. SCOPE OF THE ENVIRONMENTAL ASSESSMENT	5
5. DESCRIPTION OF THE ALTERNATIVES	5
5.1. Alternative A-No Action	5
5.2. Alternative B-Preferred Alternative-New Kennel facility west of CATM Bldg	5
5.3. Alternatives Eliminated From Further Analysis	5
6. AFFECTED ENVIRONEMENT	6
6.1. General Settings	6
6.2. Meteorology	7
6.3. Noise	7
6.4. Air Quality	7
6.5. Water Resources	7
6.6. Safety and Occupational Health	8
6.7. Hazardous Materials, Hazardous Waste, and Solid Waste	8
6.8. Plant Communities	8
6.9. Wildlife	9
6.10. Threatened and Endangered Species of Concern	9
6.11. Cultural and Archeological Resources	9
6.12. Geography/Geology	9
7. ENVIRONMENTAL CONSEQUENCES	10
7.1. Resource Impacts-Alternative B	10
7.2. Safety and Occupational Health	12
7.3. Cultural Resources	12
8. PERSONS AND AGENCIES CONSULTED	13
9. REFERENCES	13
10. LIST OF PREPARERS	14
TABLE 1. COMPARISON OF ALTERNATIVES WITH SELECTION CRITERIA	15

FIGURE 1. PROPOSED KENNEL LOCATIONS..... 16
FIGURE 2. F. E. WARREN HYDROLOGIC FEATURES AND WETLAND LOCATIONS..... 23
FIGURE 3. PROPOSED KENNEL DESIGN..... 24

1. INTRODUCTION.

Francis E. Warren AFB (FEW or Base) proposes to demolish its existing Kennel Facility (Kennel) (Building 949) and replace it with a new Kennel west of the Combat Arms and Training Maintenance (CATM) building.

2. PURPOSE AND NEED FOR ACTION.

The current Kennel (Building 949) has been determined to be inadequate for housing working dogs. A new facility is needed that can provide the necessary health and safety conditions for Military Working Dogs (MWDs).

The current Kennel has failed numerous veterinary health inspections due to inadequate pen size for the animals (5' (feet) x 6' (feet) vs. an adequate 8' (feet) x 10' (feet)). Inadequate pen size can lead to working dog injury. The current Kennel also fails to meet sanitation standards: it has a 3" (inch) diameter drain instead of the required 6" (inch) diameter drain, and also lacks the ¼" (inch) per square foot slope to the floor that would allow for proper animal waste drainage. The current Kennel also lacks a fire suppression system, an additional fenced yard for canine exercise, and an adequate mechanical system for central air circulation. In addition, the current Kennel is close to a housing area, is close to FEW's perimeter fence, and is not an adequate distance from children's play areas.

It will be more expensive to renovate the current Kennel than to demolish and build a new facility.

3. SELECTION CRITERIA.

3.1. Location

Kennel location should be supplied by necessary, pre-existing infrastructure (i.e. electricity, water, sewer, roads, etc.) to reduce construction and site preparation costs.

Kennels should not be placed in a built up, busy area of the installation. Low amounts of surrounding activity ensure that working dogs receive adequate rest to perform effectively when required for duty.

Kennels should be located outside of highly populated, high activity areas. When dogs are located in areas of moderate to high activity, the dogs will create a noise distraction to people living and working in the area.

3.2 Size

Kennel location should provide enough space for construction of the required outdoor training areas and the kenneling of up to 12 MWD should a future kennel building expansion be necessary.

3.3. Infrastructure

The Kennel location should be supplied by necessary, pre-existing infrastructure (i.e. electricity, water, sewer, roads, etc.) to reduce construction and site preparation costs.

The Kennel should be located in a compatible land use area (50 meters (m) from sewer or storm drainage system to avoid potential mosquito infestations in nearby standing water).

3.4. Security

The Kennel location should meet the security needs of MWD facility and surrounding areas.

The Kennel location should be removed from areas of pedestrian and vehicular traffic, and areas hosting youth-oriented activities. There is a possibility that children would attempt to play with or harass MWDs, risking injury to children and canines.

The Kennel location should be removed from areas of frequent traffic and living areas; if an MWD were to escape from a kennel in a populated area, it would pose a substantial threat to the surrounding public.

4. SCOPE OF THE ENVIRONMENTAL ASSESSMENT.

This Environmental Assessment (EA) is required by the Air Force Environmental Impact Analysis Process (32 CFR § 989), the National Environmental Policy Act (Public Law 91-190), Council on Environmental Quality (CEQ) Regulations (40 CFR §1500-1508), and Air Force Instruction 32-7061, The Environmental Impact Analysis Process (2010). This EA identifies, describes, and evaluates the potential direct, indirect, and cumulative environmental impacts that could result from the construction of the proposed action. This EA also identifies mitigation and/or management measures to prevent or minimize environmental impacts.

5. DESCRIPTION OF ALTERNATIVES.

5.1. Alternative A-No Action.

The current Kennel (Building 949) would not be demolished and a new Kennel would not be constructed. The Base would continue to use the existing inadequate Kennel.

5.2. Alternative B-Preferred Alternative - New facility west of the CATM facility.

The current Kennel will be demolished and replaced with a new facility west of CATM facility that is in compliance with health and safety codes for working dogs. The new Kennel will be approximately 70,000 sq. ft. in size and will meet all current veterinary health and safety regulations. The new Kennel will contain kenneling facilities for up to 12 MWDs and administrative and maintenance facilities for kennel personnel. The Kennel's outdoor facilities will include a dog break area, a dog exercise area, and a dog obedience and demonstration area. Construction of the new Kennel is projected to begin in April 2012.

5.3. Alternatives Considered but Eliminated from Further Analysis (See **Table 1.**)

5.3.1. Alternative C - New facility west of building 4200.

The current Kennel will be demolished and replaced with a new Kennel west of building 4200. Alternative C does not satisfy the condition that current security conditions at Building 4200 and the new Kennel are maintained. Security conditions would be compromised at Building 4200 because of the increase in traffic associated with building of a new Kennel.

5.3.2. Alternative D - New facility east of building 1506.

The current Kennel will be demolished and replaced with a new Kennel east of building 1506. Alternative D does not satisfy the condition that the new Kennel must be located at least 50 meters from any storm drainage or sewer drainage areas due to potential mosquito infestations in storm drainage areas. A future storm sewer system is planned to be located near Building 1506.

5.3.3. Alternative E - New facility near the 1500s buildings series.

The current Kennel will be demolished and replaced with a new Kennel in the open space near the 1500's buildings. Alternative E does not satisfy the condition that the new Kennel must be located at 50 meters away from any drainage areas. Both proposed locations in 1500s area, east of building 1501 and east of 1500, would be located within 50 meters of a storm drainage lake or a future storm sewer system. The new Kennel must be located at least 50 meters away from a storm drainage system due to potential mosquito infestations.

5.3.4. Alternative F - New facility north of the horse stables.

The current Kennel will be demolished and replaced with a new Kennel north of horse stables. Alternative F does not satisfy the condition that current security conditions must be maintained for any buildings adjacent to the new Kennel and for the new Kennel. The proposed location north of horse stables is close to off-base housing and does not have utilities available. The proximity of off-base housing and a proposed helicopter operations facility has the potential to compromise security for the new Kennel, the proposed helicopter operations facility, and off-base housing due to increased traffic in the area.

5.3.5. Alternative G - New facility east of the missile transfer pad.

The current Kennel will be demolished and replaced with a new Kennel east of the missile transfer pad. Alternative G does not satisfy the condition that the new Kennel must be located at least 50 meters away from a storm drainage area, due to potential mosquito infestations in drainage areas. A storm drainage system is planned to be located directly adjacent to the missile transfer pad, which would place it within 50 meters of the proposed Kennel.

5.3.6. Alternative H - New facility north of Building 1502.

The current Kennel will be demolished and replaced with a new Kennel north of Building 1502. Alternative H does not satisfy the condition that current security and safety conditions must be maintained for any buildings adjacent to the new Kennel and for the new Kennel. The location north of building 1502 is in close proximity to both a new firing range and the base perimeter. This location is also located too close to traffic traveling to and from the 1500s building series area to be secure enough to house a new Kennel.

6. AFFECTED ENVIRONMENT.

6.1. General Setting.

FEW is located in the southeastern corner of Wyoming on the western edge of the city of Cheyenne, in Laramie County. It is approximately 11 miles north of the Colorado-Wyoming border, 100 miles north of Denver, Colorado, and 45 miles west of the Nebraska-Wyoming border.

The Base encompasses 5,866 acres and is oriented in a general north-south direction. The Base is bounded on the east by Interstate Highway 25, which separates the Base from high-density residential areas of Cheyenne. The Base is bounded on the west by Roundtop Road, low-density residential development, and the U. S. Department of Agriculture High Plains Grassland Research Station. The Base is bounded on the north by generally open rangeland and on the south by State Highway 210, low-density residential development, and open rangeland.

FEW is the second-largest employer in the area. The base currently employs 956 civilians and 3,764 military personnel, with payroll and expenditures infusing over \$304 million into the local economy in fiscal year 2004.

6.2. Meteorology.

FEW experiences moderately warm summers and cold winters. The average annual temperature is 46° Fahrenheit (F). The average daily maximum and minimum temperatures are 83° F in July and 26° F in January. Temperature extremes range from -34° to 100° F. Annual average precipitation is about 14 inches.

6.3. Noise.

Existing sources of noise on the installation include fixed-wing aircraft from the Cheyenne Airport, rotary-wing aircraft from the installation's helicopter operations, the Burlington Northern Santa Fe railroad, vehicle traffic on surface streets, and dispersed construction areas.

6.4. Air Quality.

Under provisions of the Clean Air Act (CAA), the U.S. Environmental Protection Agency (EPA) established National Ambient Air Quality Standards (NAAQS) for air pollutants considered harmful to human health and the environment. The CAA established two types of national air quality standards. One set of limits (the primary standard) protects health; another set of limits (the secondary standard) is intended to prevent environmental and property damage. A geographic area that meets or exceeds the primary standard is called an **attainment area**; areas that don't meet the primary standard are called **non-attainment areas**. Laramie County is designated as an attainment area for all criteria air pollutants.

6.5. Water Resources.

The installation is located within the Crow Creek Watershed, which is part of the South Platte River Basin. Perennial surface water resources located on the Base include Diamond Creek, Crow Creek, North and South Pearson Lakes, and Lake Centennial. The installation contains approximately 127 acres of wetlands delineated on the U.S. Fish and Wildlife Service National Wetlands Inventory (Figure 2). While variable, depth to groundwater generally exceeds five feet throughout the installation.

6.6. Safety and Occupational Health.

Unexploded Ordnance (UXO): The preferred location (described in "Alternative B") is located within the area of a former Army range. A funded project exists to clear UXO from the area and will be completed prior to beginning construction of the proposed Kennel. A Safety and Occupational Health Plan will be required as part of the construction contract.

Trichloroethylene (TCE): The chemical compound trichloroethylene is a chlorinated hydrocarbon commonly used as an industrial solvent. Five plumes of trichloroethylene - contaminated groundwater have been discovered on the installation. These plumes cover approximately 700 acres. These plumes are not located in proximity to "Alternative B," the preferred Kennel construction site and will not impact construction.

6.7. Hazardous Materials, Hazardous Waste, and Solid Waste.

Hazardous materials are used on FEW. Residues from these materials are collected at 19 Satellite Accumulation Points (SAPs). Hazardous wastes are transferred from the SAPs to the base's Hazardous Waste Characterization Site (Building 944) where they are categorized and prepared for shipment. After characterization, wastes are transferred to one of six, 90-day hazardous waste storage buildings.

FEW does not manage any active solid waste landfills. Solid waste (trash) is collected, weighed, and transported to the City of Cheyenne landfill for disposal.

6.8. Plant Communities.

Three primary vegetation communities occur on the Base: (1) shortgrass prairie grassland; (2) wet (mesic) meadow wetlands; and (3) riparian areas – cottonwood and willow. The shortgrass prairie grassland is dominated by blue grama (*Bouteloua gracilis*), western wheatgrass (*Elymus smithii*), needle-and-thread grass (*Stipa comata*), and fringed sagewort (*Artemisia frigida*). Wet meadows on the Base are dominated by foxtail barley (*Hordeum jubatum*), Kentucky bluegrass (*Poa pratensis*), tall wheatgrass (*Elymus elongatus*), baltic rush (*Juncus balticus*), tufted hairgrass (*Deschampsia cespitosa*), bluejoint grass (*Calamagrostis canadensis*), and sedges (*Carex spp.*). The riparian areas are dominated by a shrub scrub community of sandbar willow (*Salix exigua*), strap willow (*Salix lingulifolia*), and crack willow (*Salix fragilis*), with scattered cottonwood (*Populus deltoides*) and green ash (*Fraxinus pennsylvanica*) trees and herbaceous understory similar to the mesic meadows. Much of the previously disturbed and reclaimed areas on the Base (e.g., small arms impact area) are dominated by planted crested wheatgrass (*Agropyron cristatum*), which was planted as part of restoration efforts (WEST 2001b).

Developed areas of the Base have a woody vegetation component that, while not originally present, is extremely important for wildlife, aesthetic, cultural, and social values. Plains cottonwood, Colorado spruce, Ponderosa pine, and green ash are the most important woody vegetation species on the installation. There are no wooded areas of five acres or greater on the Base; however, the urban forest is an intrinsic component of the current environment of the Historic District.

Several noxious weed species are known to occur on the Base. Of these species, Canada thistle (*Cirsium arvense*), Dalmatian toadflax (*Linaria dalmatica*), and Leafy spurge (*Euphorbia esula*) are the most prevalent.

6.9. Wildlife.

A relatively large herd of pronghorn antelope (*Antilocarpa americana*) inhabits the Base. Although the pronghorn on the installation are a part of the larger Iron Mountain herd, most reside on the installation year-round. The Base population was approximately 325 animals in 2011. The pronghorn are free ranging and occur throughout the Base, including the developed urban areas.

At least 139 species of birds have been recorded on the Base. Included among the several species of waterfowl are the tundra swan (*Cygnus columbianus*), Canada goose (*Branta canadensis*), and wood duck (*Aix sponsa*). The birds-of-prey recorded on the Base include the turkey vulture (*Cathartes aura*), bald eagle (*Haliaeetus leucocephalus*), peregrine falcon (*Falco peregrinus*), and several species of hawk (*Buteo spp.*) (WEST 2001b).

6.10. Threatened and Endangered Species of Concern.

The Colorado Butterfly Plant (*Gaura neomexicana* spp. *coloradensis*) has been listed as Threatened under the Endangered Species Act since October 2000. Colorado Butterfly Plant populations are found on FEW, but do not occur within the project area.

The Preble's Meadow Jumping Mouse (*Zapus hudsonius preblei*) has been listed as Threatened throughout its range since August 2011. The Preble's Mouse is not known to occur within the project area.

The installation supports a pre-release conditioning facility for Black-footed ferrets (*Mustela nigripes*), a federally listed endangered species. This fully enclosed facility is operated by the U.S. Fish and Wildlife Service. Ferrets are imported to the facility from captive breeding locations during the summer months, and then removed from the facility several weeks later for transport to release sites in various regions of the United States. There are no other known endangered species on the installation.

Other species of concern that may inhabit the Base include the swift fox (*Vulpes velox*), mountain plover (*Charadrius montanus*), and burrowing owl (*Athene cunicularia*).

6.11. Cultural and Archeological Resources.

FEW has approximately 208 impressive brick structures listed in the National Register of Historic Places. Most of these facilities are located within the central core of the Base, designated as a Historic District in 1969 under the provisions of the National Historic Preservation Act [16 U.S.C. 470 *et seq.*], and designated the Fort D. A. Russell National Historic Landmark in 1972 (Figure B-9). The Base also contains 131 archaeological sites; of which, 71 are eligible or potentially eligible for inclusion in the National Register of Historic Places (30 C.F.R. 60).

6.12. Geography/Geology.

FEW lies within the High Plains section of the Great Plains Physiographic Province. Rocks within the region range in age from Pre-Cambrian to recent, and are composed primarily of shale with small amounts of sandstone, siltstone, and limestone. The Base is in Seismic Zone 1, which means there is a minor seismic event probability. The Base topography is

characterized by broad plateaus that are nearly flat in the historic core, and increase in slope along the ridgelines and along Crow Creek.

Elevation ranges from 6,080 feet in the southeastern portion of the Base to 6,365 feet in the northern portion. Most areas with slopes of 10 percent or greater, which are generally considered unsuitable for construction, are located in the undeveloped northern third of the Base.

The predominant soil series on the Base is classified texturally as loamy, with an average topsoil depth ranging from four to six inches. The subsoil is primarily alluvial clay that extends from a depth of approximately 6 to 36 inches.

7. ENVIRONMENTAL CONSEQUENCES.

There are no anticipated impacts to Air Installation Compatible Use Zones (AICUZ), hazardous materials or hazardous waste, plant communities or wildlife, water resources, utility, transportation, or environmental justice conditions associated with construction of a kennel at the proposed location.

7.1. Resource Impacts - Alternative B - Preferred Alternative Only

7.1.1. Land Use.

- a. Direct and Indirect Impacts – FEW's General Plan existing land use designations for the proposed site would change from "open space" to "community" use (Figure 1). The proposed site is appropriate for construction of the Kennel with regard to land use compatibility.
- b. Proposed Management Practices – There are no management practices required for changes in land use designations.
- c. Cumulative Impacts – The construction of the Kennel, when combined with the impacts of other projects on or proximate to the Base, do not significantly affect Base land use patterns. The Base General Plan indicates that planned future land use patterns will not change significantly from existing land use configurations. Future development is not expected to adversely impact land use on the installation.

7.1.2. Geology and Soils.

- a. Direct and Indirect Impacts - Ground disturbance during construction and demolition will create a short-term increase in the potential for soil erosion. It is anticipated that the entire area of the selected site will be graded in order to construct the new facility, access road, and parking areas. The soils most widespread on the Base are susceptible to wind and water erosion.
- b. Proposed Management Practices – The construction/demolition contractors will be required to provide erosion and sediment control measures in accordance with federal, state, and local laws and regulations. The area of bare soil exposed at any one time by construction/demolition operations shall be kept to minimum.

The erosion and sediment control measures should substantially reduce soil erosion associated with the project.

c. Cumulative Impacts – The construction of the Kennel, when combined with the impacts of other projects on or proximate to the Base, does not significantly impact the soils on the installation. Development on the installation will disturb soils in the future. This is not expected to adversely impact soils on the installation.

7.1.3. Air Quality.

a. Direct and Indirect Impacts - A short-term increase in fugitive dust will be generated by ground disturbing activities during construction/demolition of the facilities. There will also be a short-term increase in vehicle emissions generated by construction/demolition equipment. A long-term increase in localized vehicle emissions associated with operation and use of the Kennel is expected. The Base is in an attainment area therefore, an air conformity analysis is not needed.

b. Proposed Management Practices – Construction/demolition contractors will be required to implement procedures to minimize dust particles associated with project activities. The contractors shall maintain excavations, stockpiles, haul roads, permanent and temporary access roads, and other work areas within or outside the project boundaries free from particulates that would violate federal, state or local air pollution standards or create a nuisance. To minimize erosion and fugitive dust, bare soil will be re-vegetated as soon as practicable.

c. Cumulative Impacts – There are no anticipated long-term impacts to air quality associated with the construction/demolition project. The construction/demolition of the Kennel, when combined with the impacts of other projects on or proximate to the Base, does not significantly impact installation air quality. Planned future land use patterns will not change significantly from existing land use configurations. Planned future development is not expected to change the air quality status on the Base or in the surrounding area.

7.1.4. Noise.

a. Direct and Indirect Impacts - There will be a short-term increase in noise associated with construction/demolition activities. However, noise generated by construction activities should not constitute a nuisance. Traffic to the new Kennel will be minimal and not increase noise in the vicinity.

b. Proposed Management Practices – Contractors will be required to work during daylight hours.

c. Cumulative Impacts – The construction/demolition of the Kennel, when combined with the impacts of other projects on or proximate to the Base, does not cause a significant noise impact. Planned future land use patterns will not change significantly from existing land use configurations. The increase in noise, other than during construction activities, resulting from future development is expected to be insignificant.

7.1.5. Solid Waste.

- a. Direct and Indirect Impacts - There will be non-hazardous construction and demolition debris generated by this project, such as cleared vegetation, excess lumber, and other non-hazardous building materials. Disposal of these materials is the responsibility of the contractor.
- b. Proposed Management Practices – The contractor is responsible for ensuring that generated wastes are disposed of in accordance with all applicable laws and regulations. Contractors will be required to provide a waste plan that identifies their methods of and locations for solid waste disposal, including clearing debris.
- c. Cumulative Impacts – The construction/demolition of the Kennel, when combined with the impacts of other projects on or proximate to the Base, does not significantly impact solid waste management. The amount of solid waste generated by the new Kennel should not exceed that generated by the facility it is replacing.

7.2. Safety and Occupational Health.

- a. Direct and Indirect Impacts – The proposed site is within an area with known UXO.
- b. Proposed Management Practices – A separate contract for clearance of the construction site is in place to clear the site prior to beginning construction on the facility.
- c. Cumulative Impacts – The clearance of UXO from the site, when combined with the impacts of other projects on or proximate to the Base, does not significantly impact safety and occupational health. The Base has cleared portions of the former Army range for other Base projects. The Record of Decision for the range clearance was that undeveloped areas would be cleared as necessary; e.g., to allow construction of Base facilities.

7.3. Cultural/Archeological Resources.

- a. Direct and Indirect Impacts - There are no National Historic Register-listed or eligible sites or known archaeological sites within the project area.
- b. Proposed Management Practices – In the unlikely event that archeological resources are encountered the project proponent shall follow the guidance as outlined in the FEW Cultural Resources Management Standard Operating Procedure for the Unanticipated Discovery of Archaeological Resources.
- c. Cumulative Impacts – The construction/demolition of the Kennel, when combined with the impacts of other projects on or proximate to the Base, does not significantly impact management of archeological resources on the Base.

8. PERSONS AND AGENCIES CONSULTED.

The following agencies/individuals were contacted and/or provided a copy of the EA during its original preparation in order to afford an opportunity for comment on the content of the document. Agency consultations are required per 32 CFR 989.14(d).

Wyoming State Historic Preservation Office 2301 Central Avenue Cheyenne WY 82002	John Wright (90 MW/EM) Chief, Environmental Restoration F. E. Warren AFB WY 82005	Todd Eldridge (90 CES/CEAN) Community Planner F. E. Warren AFB WY 82005
Travis Beckwith (90 CES/CEAN) Historic Preservation Officer F. E. Warren AFB WY 82005	Kurt Warmbier (90 MW/JA) Attorney Advisor, Environmental Law F. E. Warren AFB WY 82005	

9. REFERENCES.

9 CFR Chapter I Part 3 Animals and Animal Products Standards.

32 CFR § 989, Department of the Air Force Environmental Impact Analysis Process (EIAP).

90 MW Plan 32-2, 90th Missile Wing Hazardous Waste Management Plan, January 2011.

AFI 32-7042, Waste Management, April 2009.

AFPAM 32-7043, Hazardous Waste Management Guide, November 1995.

AR 190-12. Military Working Dog Program, June 2007.

FEW Integrated Cultural Resources Management Plan, August 2009.

FEW Integrated Natural Resources Management Plan, May 2006.

FEW Spill Prevention, Control and Countermeasure Plan, December 2010.

FEW General Plan, April 2005.

Western Ecosystems Technology (WEST), 2001b. *Fish and Wildlife Management Operational Component Plan for Francis E. Warren Air Force Base.*

Wyoming Department of Environmental Quality, Air Quality Division Permit MD-1287 (MD-1287).

10. LIST OF PREPARERS

10.1. Preparers

Name	Sections	Background	Experience (years)
Kurt Warmbier	1-6	B.S., Biology; M.S., Environmental Management; M.P.A.; J.D.	22
Jennifer Howenstine	1-6	B.A., Biology, Masters, Environmental Science	4

10.2. Reviewers

Name	Agency	Title
Kurt Warmbier	USAF, 90 MW/JA	Attorney Advisor, Environmental Law

Table 1. Comparison of Alternatives with Selection Criteria.

Selection Criterion	<u>Alternative A</u> (No Action)	<u>Alternative B</u> (Preferred)	<u>Alternative C</u>	<u>Alternative D</u>	<u>Alternative E</u>	<u>Alternative F</u>	<u>Alternative G</u>	<u>Alternative H</u>
Kennel is located in a compatible land use area (50 m from sewer or storm drainage)	N/A	YES	YES	NO	NO	YES	NO	YES
Kennel location provides enough space for construction of largest possible MWD facility	N/A	YES	YES	NO	NO	YES	NO	NO
Kennel location is supplied by necessary infrastructure (i.e. electricity, water, sewer, roads, etc.)	N/A	YES	YES	NO	YES	NO	YES	YES
Kennel location meets security needs of MWD facility and surrounding areas	N/A	YES	NO	YES	NO	NO	YES	NO

FIGURE 1. PROPOSED KENNEL LOCATIONS.

Alternative B (Preferred Alternative).

New Facility West of CATM Building (Bldg 2340)



MWD Kennel Facility Siting

 Proposed Location



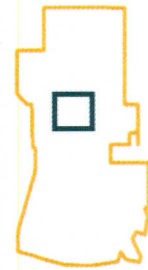
Alternative C

New Facility West of Building 4200



MWD Kennel Facility Siting

 Proposed Location



Alternative D

New Facility East of Building 1506



MWD Kennel Facility Siting

 Proposed Location



Alternative E

New Facility Near the 1500's Buildings



MWD Kennel Facility Siting

 Proposed Location



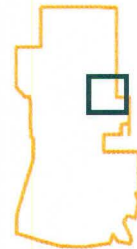
Alternative F

New Facility North of the Horse Stables



MWD Kennel Facility Siting

 Proposed Location



Alternative G

New Facility East of the Missile Transfer Pad



MWD Kennel Facility Siting

 Proposed Location



Alternative H

New Facility North of Building 1502

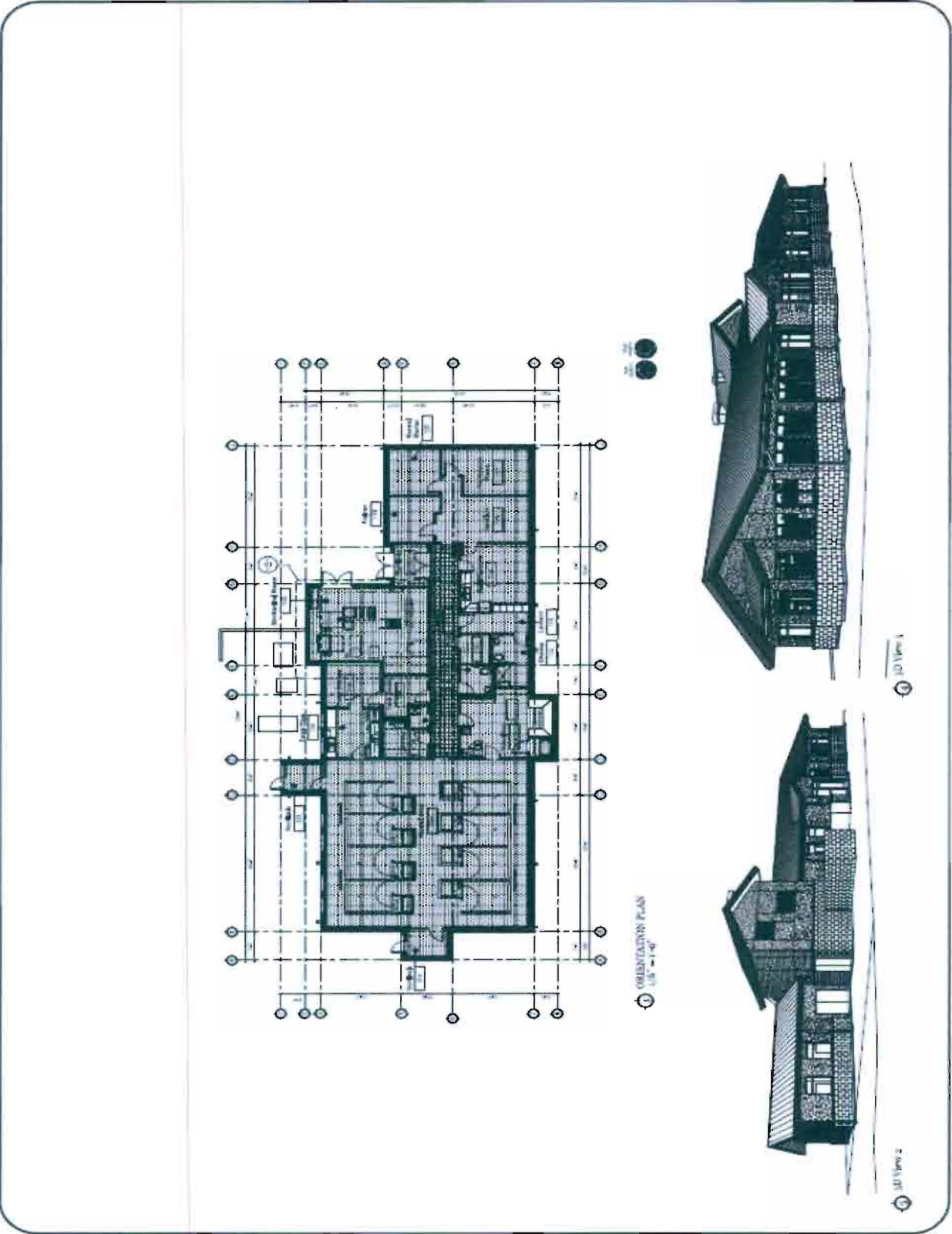


MWD Kennel Facility Siting

 Proposed Location



FIGURE 3. PROPOSED KENNEL FACILITY DESIGN



STAFF SUMMARY SHEET

	TO	ACTION	SIGNATURE (Surname), GRADE AND DATE		TO	ACTION	SIGNATURE (Surname), GRADE AND DATE
1	90 MW/JA	Coord	Wambler GS13 6 MAR 12	6	90 MW/CV	Coord	Col. [Signature] 27 MAR 12
2	90 MSG/CC	Coord	J. C. [Signature] Col 7 MAR 12	7	90 MW/CC	Sign	[Signature] Col 27 MAR 12
3	90 MW/CCEA	Coord	MAH 8 Mar 12 #19	8	90 CES/CC	File	
4	90 MW/CCE	Coord	[Signature] Capt 9 MAR	9			
5	90 MW/CCS	Coord	[Signature] 21 MAR	10			

SURNAME OF ACTION OFFICER AND GRADE	SYMBOL	PHONE	TYPYST'S INITIALS	SUSPENSE DATE
Howenstine, Contractor	90 CES/CEAN	773-5098	rs	20120309

SUBJECT	DATE
Final Environmental Assessment (EA) and Finding of No Significant Impact (FONSI) for Replacement of the Military Working Dog (MWD) Kennel Facility, GHLN 11-6002.	20120222

SUMMARY

- PURPOSE:** To obtain signature on the final FONSI for the Replacement of the MWD Kennel Facility, GHLN 11-6002.
- SUMMARY:** An EA, prepared by Booz Allen Hamilton, for the Replacement of the MWD Kennel Facility has been prepared as required by the National Environmental Policy Act (42 U.S.C. 4321 et seq.) and the Air Force Environmental Impact Process (32 CFR 898). The current Kennel Facility has failed numerous veterinary health inspections and has been determined to be inadequate for safely housing MWDs. Accordingly, the current Kennel Facility will be demolished and a new Kennel Facility will be constructed west of the CATM building (Bldg 2340). Construction of the new Kennel Facility has been found not have a significant impact or cumulative impact on the surrounding environment.
- Final FONSI and EA for Replacement of the Kennel Facility at Tab 1 and Tab 2, respectively.
- RECOMMENDATION:** 90 MW/CC sign the FONSI at Tab 1. Return to 90 CES/CC.


 TRAVIS K. LEIGHTON, Lt Col, USAF
 Commander, 90th Civil Engineer Squadron

2 Tabs
 1. Final FONSI for Replacement of the Kennel Facility
 2. Final EA for Replacement of the Kennel Facility

FINAL
FINDING OF NO SIGNIFICANT IMPACT (FONSI)
FOR
REPLACEMENT OF THE KENNEL FACILITY
F. E. WARREN AIR FORCE BASE, WYOMING

DECISION

It is my decision to approve the proposed action as described in the Environmental Assessment (EA) for the Replacement of the Kennel Facility (Building 949), which is attached and hereby incorporated by reference. F. E. Warren AFB (FEW) will replace its current Military Working Dog (MWD) facility with a new Kennel facility building that will meet current health and safety standards for military working dogs.

FINDING OF NO SIGNIFICANT IMPACT

This EA was prepared and evaluated pursuant to the National Environmental Policy Act (Public Law 91-190, 42 U.S.C. 4321 *et seq*) and the Air Force Environmental Impact Process (32 CFR 898). I have concluded that the Proposed Action does not constitute “a major federal action significantly affecting the quality of the human environment” when considered individually or cumulatively in the context of the referenced Act, including both direct and indirect impacts. Therefore, an Environmental Impact Statement (EIS) is not necessary.

RATIONALE FOR DECISION

My decision to approve the proposed action, replacing the current Kennel facility (Building 949), with a new MWD Kennel facility, is based upon the following:

The current Kennel facility has failed numerous veterinary health inspections due to inadequate pen size for the animals (5' (feet) x 6' (feet) vs. an adequate 8' (feet) x 10' (feet)).

The current Kennel facility fails to meet sanitation standards: it has a 3" (inch) diameter drain instead of the required 6" (inch) diameter drain, and also lacks the ¼" (inch) per square foot slope to the floor that would allow for proper animal waste drainage.


The current Kennel facility lacks a fire suppression system, an additional fenced yard for canine exercise, and an adequate mechanical system for central air circulation.

The current Kennel facility is very close to a Housing area, is close to FEW's perimeter fence, and is not in a location that is an adequate distance from children's play areas.

It would cost more money to renovate the current Kennel facility than to demolish the Kennel and build a new facility.

Based on the analysis of environmental impacts in the EA, impacts to wildlife and other resources resulting from the proposed project, independently or cumulatively, will not be significant.

APPROVED BY



CHRISTOPHER A. COFFELT, Colonel, USAF
Commander, 90th Missile Wing

29 MAR 12

DATE