

# **Sand Ripple Dynamics on the Inner Shelf**

Daniel M. Hanes  
USGS Pacific Science Center, 400 Natural Bridges Drive, Santa Cruz, CA 95060  
phone: (831) 427-4718 fax: (831) 427-4748 email: [dhanes@usgs.gov](mailto:dhanes@usgs.gov)

David M. Rubin  
USGS Pacific Science Center, 400 Natural Bridges Drive, Santa Cruz, CA 95060  
phone: (831) 427-4736 fax: (831) 427-4748 email: [dhanes@usgs.gov](mailto:dhanes@usgs.gov)

Award Number: N00014-04-IP20098 (USGS)

Donald N. Slinn  
Department of Civil and Coastal Engineering  
University of Florida  
Gainesville, FL 32611-6590  
Phone: (352) 392-9537 x 1431 Fax: (352) 392-3466 E-mail: [slinn@coastal.ufl.edu](mailto:slinn@coastal.ufl.edu)

Award Number: N00014-04-1-0627  
<http://www.ce.ufl.edu/people/faculty/alpha/slinn.htm>

## **LONG-TERM GOALS**

The prediction of bedforms in coastal regions.

## **OBJECTIVES**

To comprehensively investigate the genesis, dynamics, morphology, and evolution of bedforms found in sandy inner-shelf environments, with emphasis on those bedforms that affect the penetration of sound into the seabed.

## **APPROACH**

We will utilize a combination of field observations, laboratory experiments, and numerical modeling to determine the relationships between ripple morphology, wave and current conditions, and sediment characteristics.

## **WORK COMPLETED**

A suite of instrumentation and laboratory apparatus has been designed and assembled for field and laboratory observations of bedforms.

Field observations were obtained near Fort Walton Beach, FL, during the period of Sept 25-28, 2004. We obtained measurements of ripples and sediment size using optical and acoustical methods at approximately 50 locations. Five grab samples were also obtained. The main transects were cross-

# Report Documentation Page

Form Approved  
OMB No. 0704-0188

Public reporting burden for the collection of information is estimated to average 1 hour per response, including the time for reviewing instructions, searching existing data sources, gathering and maintaining the data needed, and completing and reviewing the collection of information. Send comments regarding this burden estimate or any other aspect of this collection of information, including suggestions for reducing this burden, to Washington Headquarters Services, Directorate for Information Operations and Reports, 1215 Jefferson Davis Highway, Suite 1204, Arlington VA 22202-4302. Respondents should be aware that notwithstanding any other provision of law, no person shall be subject to a penalty for failing to comply with a collection of information if it does not display a currently valid OMB control number.

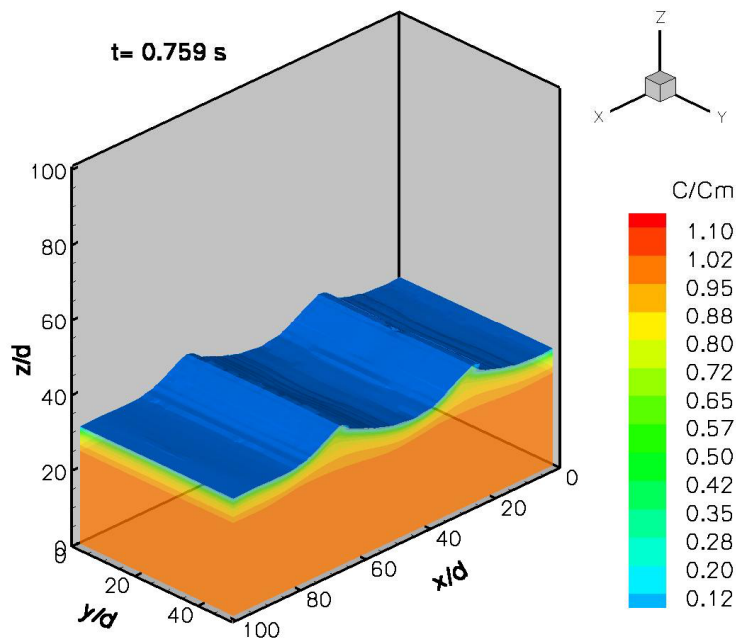
1. REPORT DATE <b>30 SEP 2004</b>		2. REPORT TYPE		3. DATES COVERED <b>00-00-2004 to 00-00-2004</b>	
4. TITLE AND SUBTITLE <b>Sand Ripple Dynamics on the Inner Shelf</b>				5a. CONTRACT NUMBER	
				5b. GRANT NUMBER	
				5c. PROGRAM ELEMENT NUMBER	
6. AUTHOR(S)				5d. PROJECT NUMBER	
				5e. TASK NUMBER	
				5f. WORK UNIT NUMBER	
7. PERFORMING ORGANIZATION NAME(S) AND ADDRESS(ES) <b>USGS Pacific Science Center,,400 Natural Bridges Drive,,Santa Cruz,,CA,95060</b>				8. PERFORMING ORGANIZATION REPORT NUMBER	
9. SPONSORING/MONITORING AGENCY NAME(S) AND ADDRESS(ES)				10. SPONSOR/MONITOR'S ACRONYM(S)	
				11. SPONSOR/MONITOR'S REPORT NUMBER(S)	
12. DISTRIBUTION/AVAILABILITY STATEMENT <b>Approved for public release; distribution unlimited</b>					
13. SUPPLEMENTARY NOTES					
14. ABSTRACT					
15. SUBJECT TERMS					
16. SECURITY CLASSIFICATION OF:			17. LIMITATION OF ABSTRACT	18. NUMBER OF PAGES	19a. NAME OF RESPONSIBLE PERSON
a. REPORT <b>unclassified</b>	b. ABSTRACT <b>unclassified</b>	c. THIS PAGE <b>unclassified</b>			

shore from 5 to 40 meters depth (approximately at 86 38' W from 30 23.6' to 30 6.4' N), and longshore (approximately 30 22.8' N from 86 38.1' to 86 39.4' W) in 18 to 20 meters depth.

Numerical model development has been initiated. Two approaches are being pursued simultaneously. In the first approach, the hydrodynamics are modeled using Large Eddy Simulations and the seabed interface is evolved by calculating the local time dependent scour and accretion over each portion of the sand ripple. Sediment fluxes to and from the bed are determined by relationships between the near-boundary fluid velocities and empirical formulations for bed-load and suspended sediment load. In the second approach, the sea-bed is modeled as a porous layer of sand-water mixture using a continuum approximation. Here the mixture has bulk properties (density, viscosity, and particle pressures) depending on the local concentration of the sediment. In this approach sand ripples naturally evolve over wave cycles in response to scouring and deposition and pressure anomalies on the surface of the ripples.

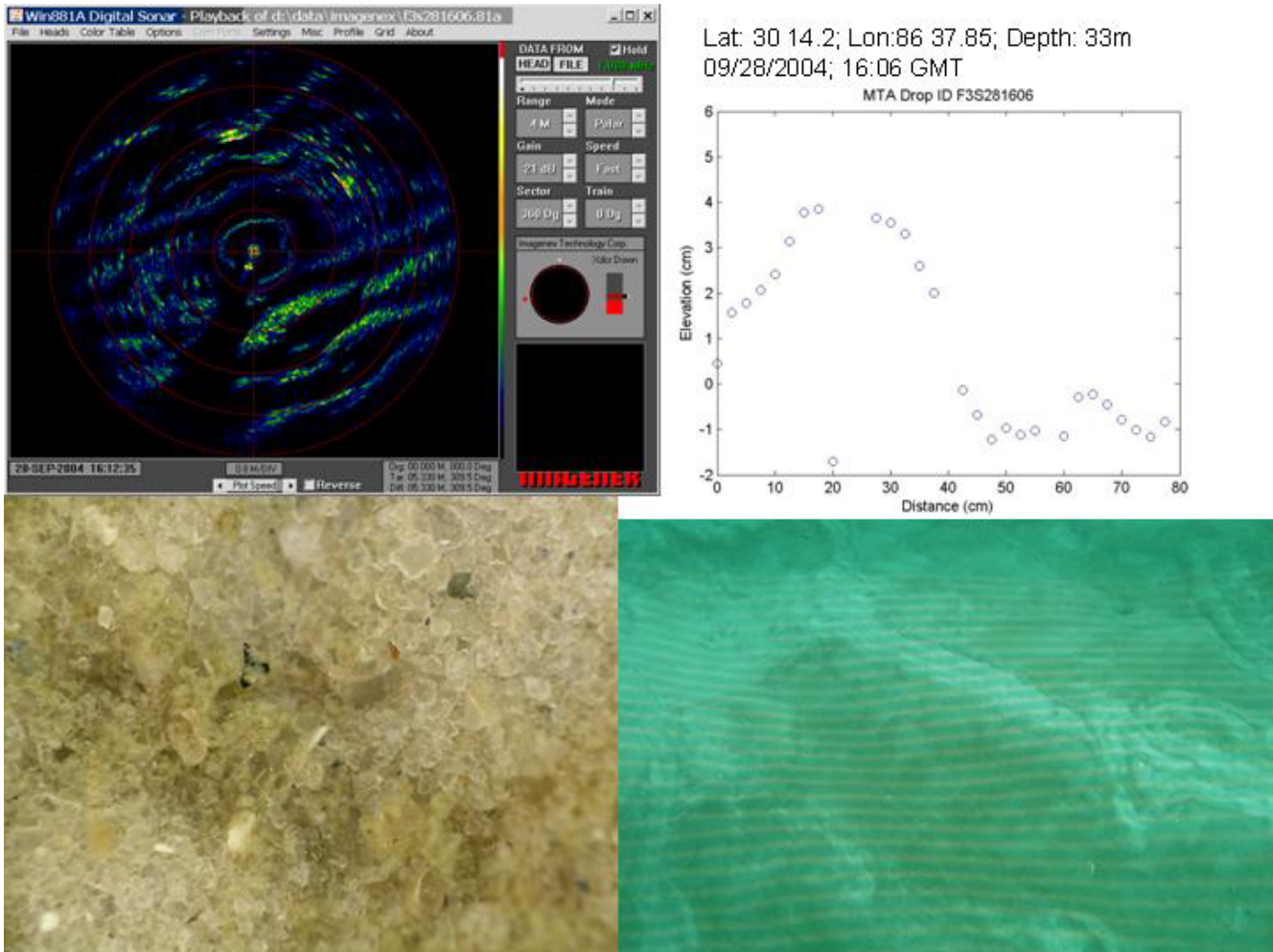
## RESULTS

Fine sediment and other material were generally found in the water column and also on the seabed. The amount of fine material on the seabed was highly variable, at some locations consisting of a layer less than 1 mm, and other locations several cm. Patches with thick mud deposits were generally flat, but regions with sand-shell and thin mud deposits were generally rippled, including the deepest sites measured. An example from the recently completed field observations is shown below. These measurements were made in 23 meters depth approximately south of the SAX04 field site soon after the passage of hurricane Ivan. These observations, along with others, suggest that hurricane generated waves formed ripples across the inner shelf.



**Figure 1. Transient sand ripples that evolved during model experiments using the continuum approach for a live bed from preliminary numerical experiments.**

Model experiments are at a preliminary stage. Under strong wave forcing conditions ripple-like features develop in the sea-bed during transition from weak to strong flow conditions. At this stage we are adding additional rigidity to the sea-bed by including particle-particle pressure forces to attempt to stabilize the ripple formations for longer periods of time as observed in nature.



**Figure 2.** *Bedforms observed during the Sand Ripple experiment in Ft. Walton beach Florida, from Acoustic images (upper left panel), ripple amplitude and wavelength (upper right panel), observations of grain size from optical images of the seabed (lower left panel) and larger scale images of sand ripples on the sea-floor.*

## IMPACT/APPLICATIONS

The accurate prediction of bed-form geometry and orientation will improve buried mine detection techniques.

## **RELATED PROJECTS**

A USGS project, Coastal Evolution: Multi-scale, Process-based Modeling, has a task focused on the wave-boundary layer scale, and has significant synergy with this project.

A related ONR Coastal Geosciences supported project on modeling Sediment Transport in Energetic Wave Bottom Boundary Layers with PI Donald Slinn.

## **PUBLICATIONS**

Chang, Y.S. and D.M. Hanes, Field observation and numerical investigation of the suspended sediment distribution over ripples seabeds, *Journal of Geophysical Research Oceans*, 109, C07022, doi:10.1029/2003JC001900, 2004 [published, refereed].

Hsu, T.J., and D.M. Hanes, The Effects of Wave Shape on Sheet Flow Sediment Transport, *Journal of Geophysical Research Oceans*, doi:10.1029/2003JC002075, 2004 [published, refereed].

B. C. Barr, D. N. Slinn, T. Pierro, K. B. Winters, 2004, Numerical simulation of turbulent, oscillatory flow over sand ripples, *Journal of Geophysical Research – Oceans*, Vol 109, C09009, doi:10.1029/2002JC001709. [published, refereed].