



AFRL-RX-WP-JA-2015-0028

**OBSERVATION OF THE INTRINSIC BANDGAP
BEHAVIOUR IN AS-GROWN EPITAXIAL TWISTED
GRAPHENE (POSTPRINT)**

**Jeongho Park, William C. Mitchel, Lawrence Grazulis, John Hoelscher, Krishnamurthy Mahalingam, and Jonghoon Lee
AFRL/RXAN**

**Said Elhamri
Department of Physics, University of Dayton**

**Choongyu Hwang
Department of Physics, Pusan National University**

**Sung-Kwan Mo
Advanced Light Source, Lawrence Berkeley National Laboratory**

**NOVEMBER 2014
Interim Report**

Distribution A. Approved for public release; distribution unlimited.

See additional restrictions described on inside pages

STINFO COPY

© 2015 Macmillan Publishers Limited

**AIR FORCE RESEARCH LABORATORY
MATERIALS AND MANUFACTURING DIRECTORATE
WRIGHT-PATTERSON AIR FORCE BASE, OH 45433-7750
AIR FORCE MATERIEL COMMAND
UNITED STATES AIR FORCE**

REPORT DOCUMENTATION PAGE

Form Approved
OMB No. 074-0188

Public reporting burden for this collection of information is estimated to average 1 hour per response, including the time for reviewing instructions, searching existing data sources, gathering and maintaining the data needed, and completing and reviewing this collection of information. Send comments regarding this burden estimate or any other aspect of this collection of information, including suggestions for reducing this burden to Defense, Washington Headquarters Services, Directorate for Information Operations and Reports, 1215 Jefferson Davis Highway, Suite 1204, Arlington, VA 22202-4302. Respondents should be aware that notwithstanding any other provision of law, no person shall be subject to any penalty for failing to comply with a collection of information if it does not display a currently valid OMB control number. PLEASE DO NOT RETURN YOUR FORM TO THE ABOVE ADDRESS.

1. REPORT DATE (DD-MM-YYYY) November 2014		2. REPORT TYPE Interim		3. DATES COVERED (From - To) 08 June 2011 - 27 October 2014	
4. TITLE AND SUBTITLE OBSERVATION OF THE INTRINSIC BANDGAP BEHAVIOUR IN AS-GROWN EPITAXIAL TWISTED GRAPHENE (POSTPRINT)				5a. CONTRACT NUMBER In-House	
				5b. GRANT NUMBER	
				5c. PROGRAM ELEMENT NUMBER 61102F	
6. AUTHOR(S) (see back)				5d. PROJECT NUMBER 3001	
				5e. TASK NUMBER	
				5f. WORK UNIT NUMBER X091	
7. PERFORMING ORGANIZATION NAME(S) AND ADDRESS(ES) (see back)				8. PERFORMING ORGANIZATION REPORT NUMBER	
9. SPONSORING / MONITORING AGENCY NAME(S) AND ADDRESS(ES) Air Force Research Laboratory Materials and Manufacturing Directorate Wright Patterson Air Force Base, OH 45433-7750 Air Force Materiel Command United States Air Force				10. SPONSOR/MONITOR'S ACRONYM(S) AFRL/RXAN	
				11. SPONSOR/MONITOR'S REPORT NUMBER(S) AFRL-RX-WP-JA-2015-0028	
12. DISTRIBUTION / AVAILABILITY STATEMENT Distribution A. Approved for public release; distribution unlimited. This report contains color.					
13. SUPPLEMENTARY NOTES PA Case Number: 88ABW-2014-1439, Clearance Date: 03 April 2014. Journal article published in Nature Communications 6:5677. © 2015 Macmillan Publishers Limited. The U.S. Government is joint author of the work and has the right to use, modify, reproduce, release, perform, display or disclose the work. The final publication is available at DOI: 10.1038/ncomms6677.					
14. ABSTRACT Twisted graphene is of particular interest due to several intriguing characteristics, such as its the Fermi velocity, van Hove singularities and electronic localization. Theoretical studies recently suggested the possible bandgap opening and tuning. Here, we report a novel approach to producing epitaxial twisted graphene on SiC (0001) and the observation of its intrinsic bandgap behaviour. The direct deposition of C ₆₀ on pre-grown graphene layers results in few-layer twisted graphene confirmed by angular resolved photoemission spectroscopy and Raman analysis. The strong enhanced G band in Raman and sp ³ bonding characteristic in X-ray photoemission spectroscopy suggests the existence of interlayer interaction between adjacent graphene layers. The interlayer spacing between grapheme layers measured by transmission electron microscopy is 0.352±0.012 nm. Thermal activation behaviour and nonlinear current-voltage characteristics conclude that an intrinsic bandgap is opened in twisted graphene. Low sheet resistance (~160Ω □ ⁻¹ at 10 K) and high mobility (~2,000 cm ² V ⁻¹ s ⁻¹ at 10 K) are observed.					
15. SUBJECT TERMS physical sciences, materials science, condensed matter					
16. SECURITY CLASSIFICATION OF:			17. LIMITATION OF ABSTRACT SAR	18. NUMBER OF PAGES 12	19a. NAME OF RESPONSIBLE PERSON (Monitor) John J. Boeckl
a. REPORT Unclassified	b. ABSTRACT Unclassified	c. THIS PAGE Unclassified			19b. TELEPHONE NUBER (include area code) (937) 255-9906

REPORT DOCUMENTATION PAGE Cont'd

6. AUTHOR(S)

Jeongho Park, William C. Mitchel, Lawrence Grazulis, John Hoelscher, Krishnamurthy Mahalingam, and Jonghoon Lee -
Materials and Manufacturing Directorate, Air Force Research Laboratory, Functional Materials Division

Said Elhamri - Department of Physics, University of Dayton

Choongyu Hwang - Department of Physics, Pusan National University, Busan

Sung-Kwan Mo - Advanced Light Source, Lawrence Berkeley National Laboratory

7. PERFORMING ORGANIZATION NAME(S) AND ADDRESS(ES)

AFRL/RXAN
Air Force Research Laboratory
Materials and Manufacturing Directorate
Wright-Patterson Air Force Base, OH 45433-7750

Department of Physics
University of Dayton
Dayton, Ohio 45469

Department of Physics
Pusan National University
Busan 609-735
Republic of Korea

Advanced Light Source
Lawrence Berkeley National Laboratory
Berkeley, California 94720

ARTICLE

Received 8 Aug 2014 | Accepted 27 Oct 2014 | Published 6 Jan 2015

DOI: 10.1038/ncomms6677

Observation of the intrinsic bandgap behaviour in as-grown epitaxial twisted graphene

Jeongho Park¹, William C. Mitchel¹, Said Elhamri², Lawrence Grazulis¹, John Hoelscher¹, Krishnamurthy Mahalingam¹, Choongyu Hwang³, Sung Kwan Mo⁴ & Jonghoon Lee¹

Twisted graphene is of particular interest due to several intriguing characteristics, such as its the Fermi velocity, van Hove singularities and electronic localization. Theoretical studies recently suggested the possible bandgap opening and tuning. Here, we report a novel approach to producing epitaxial twisted graphene on SiC (0001) and the observation of its intrinsic bandgap behaviour. The direct deposition of C₆₀ on pre-grown graphene layers results in few-layer twisted graphene confirmed by angular resolved photoemission spectroscopy and Raman analysis. The strong enhanced G band in Raman and sp³ bonding characteristic in X-ray photoemission spectroscopy suggests the existence of interlayer interaction between adjacent graphene layers. The interlayer spacing between graphene layers measured by transmission electron microscopy is 0.352 ± 0.012 nm. Thermal activation behaviour and nonlinear current-voltage characteristics conclude that an intrinsic bandgap is opened in twisted graphene. Low sheet resistance (~160 Ω□⁻¹ at 10 K) and high mobility (~2,000 cm²V⁻¹s⁻¹ at 10 K) are observed.

¹Air Force Research Laboratory, Materials and Manufacturing Directorate (AFRL/RXAN) Wright Patterson AFB, Wright Patterson AFB, Ohio 45433 7707, USA. ²Department of Physics, University of Dayton, Dayton, Ohio 45469, USA. ³Department of Physics, Pusan National University, Busan 609 735, Republic of Korea. ⁴Advanced Light Source, Lawrence Berkeley National Laboratory, Berkeley, California 94720, USA. Correspondence and requests for materials should be addressed to J.P. (email: jeongho.park.1.ctr@us.af.mil).

Distribution A. Approved for public release; distribution unlimited.

The rotational stacking of graphene layers alters their electronic characteristics resulting in novel and rich physics^{1–8}. Bernal (AB) stacked graphene rotated by 60° between adjacent layers is well understood and its electronic properties are radically different from single layer graphene (SLG). Bernal stacked graphene shows quadratic energy momentum dispersion due to strong interlayer interaction and a bandgap opening due to symmetry breaking. Twisted graphene (TG) rotated by an arbitrary angle is commonly found in graphene grown on metals^{3,9,10}, C face SiC¹¹ or bulk graphite surfaces^{12,13}, and is still under intensive study to identify its properties. *Ab initio* calculations showed that the Dirac cones and Fermi velocity of each layer preserved those of SLG due to decoupling between layers¹⁴. A full tight binding calculation showed a reduction of the Fermi velocity due to interlayer interaction². For TG with small twist angles ($\theta < 15^\circ$), the experimental studies showed^{1,3,6,9} that the Dirac cones for each layer persist but van Hove singularities are present due to the interlayer interaction. For large twist angles, the twisted layers effectively decouple from each other and become indistinguishable from SLG⁷. However, several theoretical reports have recently predicted the existence of coupling between large angle twisted layers. Mele⁸ predicted that the Dirac cones of TG are directly coupled across any commensurate rotational fault. The even state under sublattice exchange provides the bandgap in TG, while the odd symmetry has two massive graphene band structures. The bandgap opening in TG was also predicted by Muniz and Maroudas^{4,5}. They proposed that fullerene superlattices are formed due to interlayer covalent C–C sp^3 bonding and cause the bandgap opening in TG. The bandgap opening in graphene has been intensively studied to utilize its extraordinary properties in practical two dimensional (2D) nano device application and was only achieved by *ex situ* modification of graphene band structures, such as external gating structure, molecular doping and fabrication of graphene nano ribbon structures which have several drawbacks such as the requirement of *ex situ* processing steps and complex 2D device structures. Therefore, the bandgap opening method eliminating *ex situ* processing is highly desirable, which allows the direct adaption of state of the art Si technology. Here, we present evidence that direct growth by carbon source molecular beam epitaxy (CMBE) with C₆₀ molecular on pre grown template graphene results in the twisting in graphene layers and the as grown epitaxial twist graphene exhibits the tunable bandgap opening through the concentration variation of sp^3 interlayer C–C bonds. We previously reported the formation of an intrinsic gap in this stacked graphene¹⁵, but here we show that the bandgap is most likely due to fullerene superlattice and interlayer sp^3 C–C bonding in TG suggested by Muniz and Maroudas^{4,5}.

Results

Sample growth and characterization. The epitaxial TG layers were grown by the direct deposition of C₆₀ on top of pre grown graphene (henceforth called the template) by CMBE on Si face SiC. The graphene templates were grown by both CMBE using a heated graphite filament (GF) carbon source and by thermal decomposition (TD) of the SiC substrate. Angular resolved photoemission spectroscopy (ARPES) measurements on these stacked C₆₀ grown graphene/template graphene samples confirms that the hexagonal unit cells have an azimuthal offset angle of $\sim 30^\circ$ to each other. Transmission electron microscopy (TEM) measurements show that the interlayer spacing of the grown graphene layers is 0.352 ± 0.012 nm, which is larger than that of coupled (Bernal stacked) graphene layers (0.335 nm). Raman measurements indicate a significantly enhanced G band, a 2D

peak shift and a narrowing of the 2D FWHM, which is typical in interacting TG layers¹⁶. X ray photoemission spectroscopy (XPS) measurements show the existence of sp^3 carbon bonding as well as sp^2 bonded graphene structure. *I V* measurements show nonlinear characteristics and Hall measurements demonstrate activation behaviour of the carrier concentration and conductance, which is typical of gapped semiconductors. They show low sheet resistance ($\sim 160 \Omega \square^{-1}$ at 10 K) and high mobility ($\sim 2,000 \text{ cm}^2 \text{ V}^{-1} \text{ s}^{-1}$ at 10 K). Atomic simulations of graphene growth using density functional tight binding method demonstrate stable sp^3 C–C bonds interconnecting graphene layers, and show that vacancy defects in template graphene lead to sp^3 hybridized carbon formation. Various defect states are speculated to be involved in the formation of sp^3 hybridized carbons during growth. Atomic simulations using density functional tight binding method are used to demonstrate possible growth situations where vacancy defects leads to sp^3 hybridized carbon formations interconnecting layers of graphene like films.

Stacking order in C₆₀/GF FLG. We have performed ARPES measurements to analyse the stacking of C₆₀/GF FLG. Figure 1 shows the Fermi surface map for a GF template sample (Fig. 1a) and a C₆₀/GF few layer graphene (FLG) structure (Fig. 1b). The GF template (Fig. 1a) shows the point like Fermi surface at each corner of the graphene Brillouin zone. For the C₆₀/GF FLG sample, however, two hexagonal unit cells rotated by $\sim 30^\circ$ to each other were observed (Fig. 1b). This suggests that C₆₀ deposition results in graphene layers that do not follow the stacking order of the underlying template but rather gives 30° rotated stacking on top of it. We note that C₆₀ CMBE directly on SiC often results in Bernal stacked FLG¹⁷.

High-resolution cross-sectional TEM analysis. The graphene interlayer distance depends on its stacking orientation. AA and AB stacked graphene have 3.495 and 3.35 Å (ref. 18), respectively. In addition, graphene on C face SiC, which has a $\sim 30^\circ$ twist angle between adjacent layers, has a 3.368 Å interlayer distance¹⁹. TEM characterization of the graphene layers was performed using

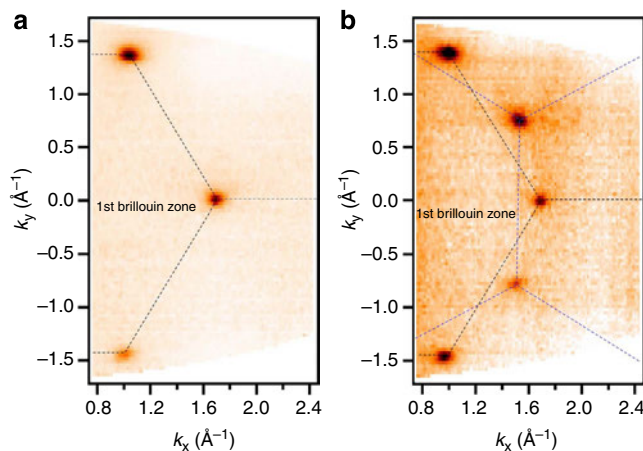


Figure 1 | ARPES analysis of twisted graphene. The constant energy map at the Fermi energy from ARPES measurements for (a) template graphene and (b) graphene grown by C₆₀ deposition, measured with photons of 50 eV. The template graphene shows point-like Fermi surfaces at each corner of the first Brillouin zone (BZ) of graphene denoted by black-dashed lines. The graphene grown by C₆₀ deposition shows an additional honeycomb shape denoted by blue-dashed lines, which is rotated by ~ 30 degrees with respect to that of template graphene.

Distribution A. Approved for public release; distribution unlimited.

an aberration corrected (image) Titan 80 300 TEM operated at an accelerating voltage of 80 kV. Cross sectional samples for TEM observations were prepared by conventional ion milling, with the samples mounted on a liquid nitrogen cooled cryo stage. For this study, the sample was grown by GF CMBE for 10 min at 1,300 °C, followed by the C₆₀ deposition for 30 min. at 1,400 °C. Figure 2a is a high resolution TEM image of the overall structure, showing the individual graphene layers and an abrupt SiC/graphene interface. The region within the graphene layers corresponding to the change in C source is also clearly revealed. The average interlayer spacing was determined by digital Fourier image analysis, based on a measurement of the distance between the relevant maxima in the power spectrum of a region within the graphene layers. Figure 2b is the power spectrum of the region within the graphene layers indicated in Fig. 2a, where the maxima corresponding to interlayer spacing along the [0001] are observed. Figure 2c is an intensity profile along the maxima from which the average interlayer spacing was determined. It is

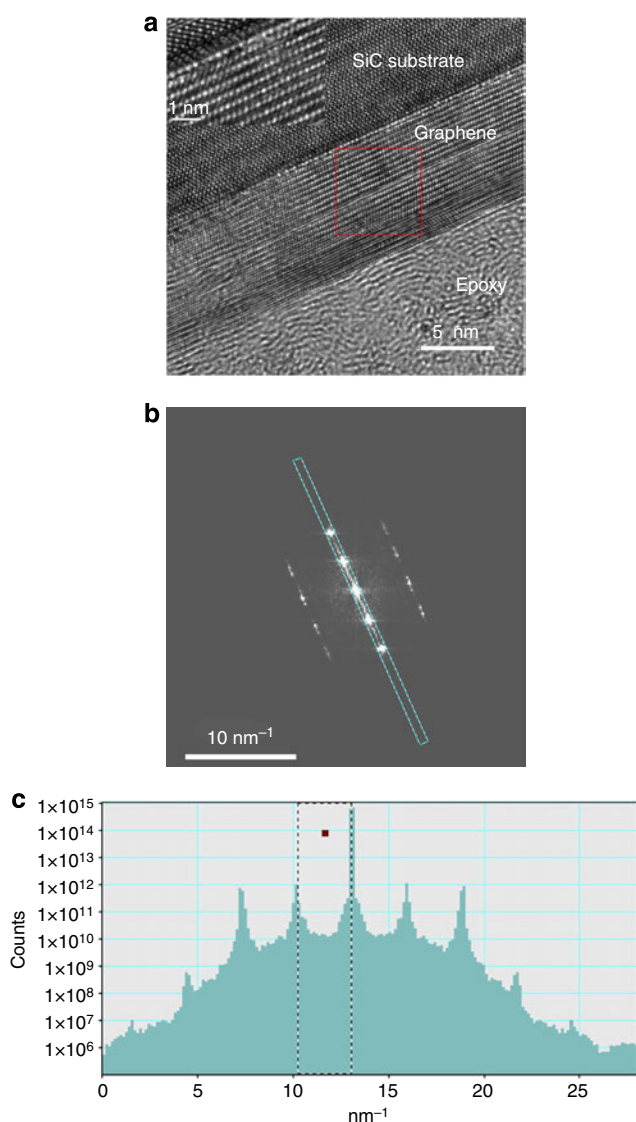


Figure 2 | TEM cross-section image and Fourier image analysis. (a) TEM image of graphene layers on a 6H-SiC substrate. The red square indicates the region chosen for digital Fourier image analysis. (b) Power spectrum of region within the red square in a. (c) Line profile along the marked region in b. The dashed lines identifying the maxima in c are 2.81 nm⁻¹ apart, corresponding to a spacing of 0.356 nm.

Distribution A. Approved for public release; distribution unlimited.

worth noting that these measurements were calibrated with reference to the [0002] spacing of the SiC substrate, which was determined using the same procedure from a region far away from the interface. On the basis of these measurements, the average interlayer spacing was determined to be 3.52 ± 0.012 Å. The observed interlayer distance is larger than that of strongly coupled Bernal stacked graphene layers (~ 3.35 Å)^{18,20}, and graphene on C face SiC (3.368 Å)¹⁹. Although the twist angle of C₆₀/GF is the same as that of graphene on C face SiC, the interlayer spacing is larger than that of the graphene on C face SiC.

Raman studies of twisted graphene. Figure 3 shows the Raman spectra for two different template types (TD and GF graphene) and FLG after C₆₀ deposition on them. As seen in Fig. 3a, the G band intensity of the TD (blue spectrum) and GF (red spectrum) template is smaller than that of the SiC Raman signal and the 2D band has an asymmetric shape and was found to be composed of two Lorentzian components. The peak positions of the TD and GF templates are located at 2,753 and 2,751 cm⁻¹, respectively. However, the spectra of the C₆₀/TD and C₆₀/GF FLG samples were dramatically changed compared with those before C₆₀ deposition, as shown in Fig. 3b,c. The first noticeable variation is a strong enhancement of the G band that was observed in both the C₆₀/TD and C₆₀/GF samples (Fig. 3b d). The second is the enhancement of the 2D band intensity, which becomes comparable to that of G band intensity and is now a symmetric, single Lorentzian peak. The third difference is the 2D band peak shift to lower wavenumber from 2,753 to 2,727 cm⁻¹ for C₆₀/TD and from 2,751 to 2,703 cm⁻¹ for 30 min C₆₀ deposition for C₆₀/GF. The red shift of the 2D peak position from Bernal stacked template graphene might be due to the decrease in interlayer interaction in TG. Similar behaviour of the 2D peak was observed between twisted graphene and Bernal stacked bilayer graphene grown by CVD¹⁶. We also observed a blue shift of the 2D peak position between monolayer graphene and turbostratic graphene possessing monolayer graphene behaviour as shown in Supplementary Fig. 1. The observed blue shift was ~ 19 and 6 cm⁻¹, respectively. Further detail is available in Supplementary Note 1. It agrees well with previously reported results in artificially twisted CVD grown graphene layers²¹. Also the FWHM of 2D band became narrower compared with that of the Bernal stacked template, from 117 to 54 cm⁻¹ for C₆₀/TD and from 111 to 43 cm⁻¹ for C₆₀/GF. This narrowing might be attributed to the reduction of interlayer coupling in our TG graphene. Interlayer interaction modifies the electronic band structure and the Raman properties. In strongly interacting AB stacked Bernal graphene, the 2D/G ratio is lower than unity and the 2D peak is typically located at $\sim 2,750$ cm⁻¹. For the noninteracting graphene layers, one would expect that the Raman behaviour should be the same as for monolayer graphene where the 2D peak is typically located below 2,700 cm⁻¹ and the 2D/G ratio is larger than unity. Weakly interacting graphene layers such as graphene on C face SiC exhibit a 2D peak located between those of monolayer and AB stacked graphene. A G peak enhancement (comparable to 2D peak) is also observed²². Previous Raman studies on TG have attributed a narrowing and intensity increase of the 2D peak to interlayer coupling and a modified electronic band structure^{16,21}. Similar behaviour observed in our TG structures suggests that an interlayer interaction still exists as well. Raman mapping over a 0.8 mm × 0.8 mm area with 50 μm steps was performed on a C₆₀/GF sample with GF growth for 20 min at 1,300 °C followed by C₆₀ deposition for 60 min at 1,400 °C. The 2D peak position and its FWHM were within the ranges $\sim 2,710.5 \pm 0.38$ cm⁻¹

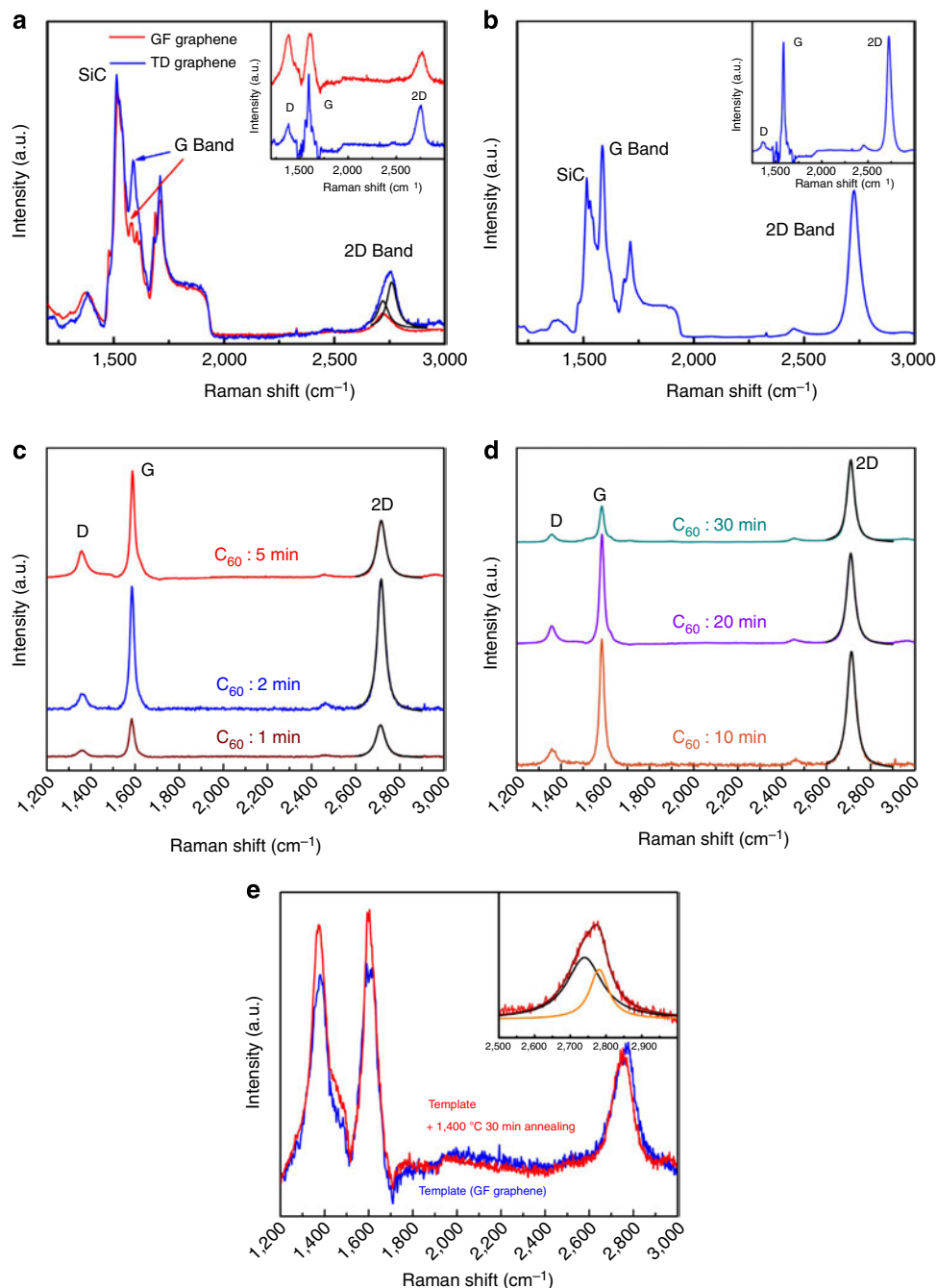


Figure 3 | Raman studies for graphene layer stacking order. Raman spectra of TD template (blue colour in **a**) and C_{60} /TD FLG sample (red colour in **a**). inset) spectrum with SiC signal subtracted. 2D band of TD template has two Lorentzian components (black coloured curves), indicating Bernal stacking structure. **(b)** C_{60} /TD FLG spectrum is composed of a single Lorentzian peak, indicating non-Bernal-stacked structure. Inset) spectrum with SiC signal subtracted. **(c,d)** Variation of Raman C_{60} /GF FLG spectra as a function of C_{60} deposition time. A single Lorentzian 2D band was observed for all samples studied. Black solid curves represent the fitted curve. **(e)** Comparison of GF template before and after thermal annealing for 30 min at 1,400 °C. Inset) curve fitting of 2D band of GF template sample.

and $\sim 48.3 \pm 2.7 \text{ cm}^{-1}$, respectively. The D/G ratio ranged within $\sim 0.18 \pm 0.04$ over the surface. The small D/G ratio value and its narrow variation indicate that twisted graphene with a low defect density was grown over the whole surface.

As the C_{60} deposition is a high temperature (1,400 °C) process, the effect of temperature on rotational faults was examined. A GF template sample annealed for 60 min at 1,400 °C in the MBE growth chamber shows that there is no significant variation between the samples with and without annealing. Both have a high D/G peak ratio, a broad 2D band and multi component of

2D bands. Therefore, we confirm that the observed twist is not induced by the temperature alone but rather by the C_{60} deposition.

Transport measurement and bandgap opening. The transport characteristics of a C_{60} /GF sample were evaluated by both I V and temperature dependent Hall effect measurements. It is worth noting that no gating voltage was applied in either experiment and that the bias voltage in the I V measurements was applied

Distribution A. Approved for public release; distribution unlimited.

through the CAFM (conductive atomic force microscopy) tip in a source drain configuration. The I – V measurements were conducted at room temperature (RT). The red and wine coloured curves in Fig. 4a present the I – V curves of graphene directly grown by GF and C_{60} on SiC, respectively, and show linear characteristics typical of zero bandgap graphene. However, twisted graphene (C_{60}/GF) shows strong nonlinear I – V characteristics, which are commonly observed in graphene nanoribbons with a bandgap^{23,24}. Han *et al.*²³ determined the transport gap from the width of the $\Delta V = 0$ region of their plot of dI/dV versus V . Similarly, we estimated the bandgap from where the differential conductance (dI/dV) ≈ 0 as shown in Fig. 4b, which results in a gap of ~ 0.5 V. The I – V measurements at the different sample locations showed similar nonlinear I – V characteristics but with a gap in range from 0.2 to 0.5 V. It is well known that dI/dV versus V measurements can be affected by a variety of factors such as contact resistance, gating capacitance and so on, which can result in an overestimated bandgap size. However, the fact that nonlinear characteristics were only observed in C_{60}/GF graphene suggests that $\Delta V \approx 0$ is correlated to the bandgap in TG. The existence of the bandgap has been further verified from the observation of thermal activation in the transport properties²⁴, which is clearly seen in the high temperature carrier concentration and conductivity data shown in Fig. 4c. The temperature dependence of the conductivity in semiconducting graphene nanoribbons has been explained by invoking three different activation processes, thermally activated excitation across the gap, nearest neighbour hopping (NNH) and variable range hopping²³. The best fits to our conductivity data gave only bandgap excitation and NNH without variable range hopping.

This fitting well describes the measured conductivity (inset of Fig. 5c) and results in a bandgap of ~ 80 meV. It should be noted that our low temperature carrier concentration data cannot be explained by hopping conduction. The difference in bandgaps from thermal activation and I – V measurements may be due to the fact that CAFM probes a small local region of the sample while our transport measurements are made over the whole $1\text{ cm} \times 1\text{ cm}$ sample and thus average over the variations in the I – V measurements reported above. Nonetheless, the observed insulator state in the I – V measurements and the thermal activation experiments strongly support the existence of a bandgap in our C_{60}/GF twisted graphene structure. Figure 4d presents the temperature dependence of the mobility for different carrier concentrations. The carrier type was p type for the entire temperature region. The bare GF template (without C_{60} deposition on it) had a high resistance ($16\text{ K}\Omega\text{ cm}^{-1}$) and low mobility ($62\text{ cm}^2\text{ V}^{-1}\text{ s}^{-1}$). However, a strong enhancement of the electrical properties was observed on the C_{60}/GF twisted graphene. The mobility at RT and 10 K are 400 and $2,050\text{ cm}^2\text{ V}^{-1}\text{ s}^{-1}$, respectively. As the temperature increases, the mobility monotonously decreases. This behaviour was not observed in FLG where the mobility is inversely proportional to temperature. Monolayer and quasi free standing graphene exhibit a very weak temperature dependence to the mobility^{16,25}. Similar behaviour was observed in the semiconductor MoS_2 (ref. 26). In the insulating state, Radisavljevic and Kis²⁶ observed strong temperature dependence at high temperatures and saturation of the mobility at low temperatures. In semiconductor materials, the mobility is limited by electron phonon scattering and has the relation of $\mu \approx T^{-\alpha}$ at high temperatures. Our C_{60}/GF samples

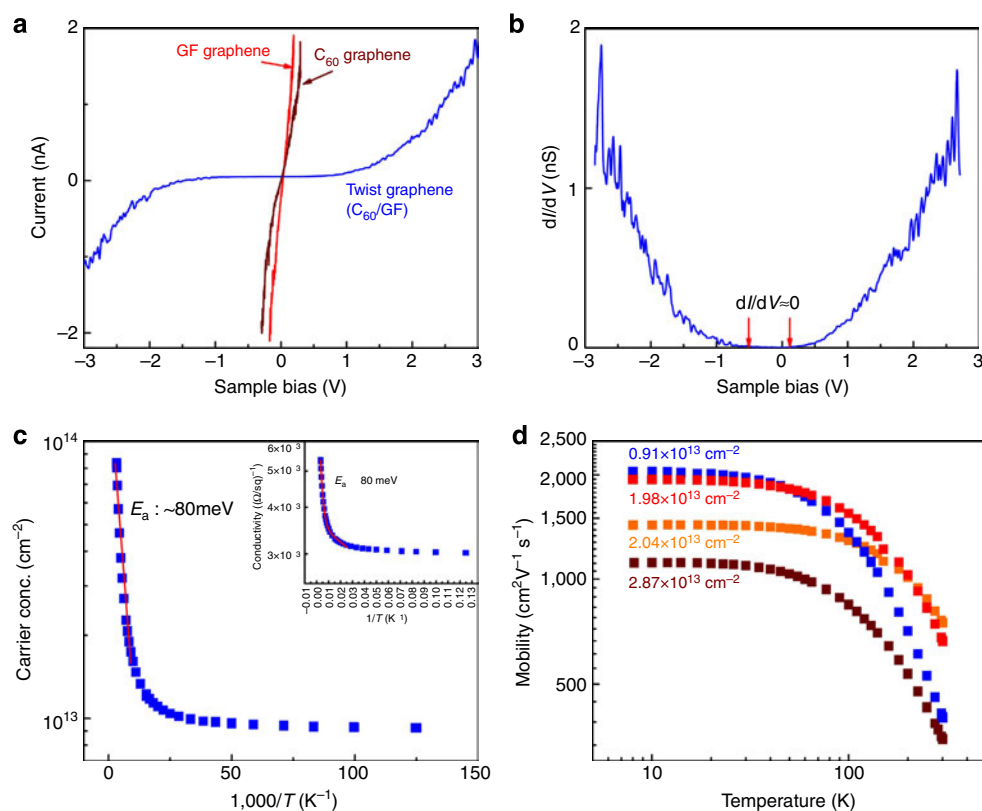


Figure 4 | Observation of intrinsic electronic bandgap in twisted graphene. Transport measurements on TG graphene grown by C_{60} (flux: 1.6×10^{-7} Torr) on GF (a) I – V curves from GF, C_{60} and C_{60}/GF TG graphene. (b) The dI/dV for C_{60}/GF TG graphene. (c) Temperature dependence carrier concentration obtained by Hall measurement. The solid curve is an aid to the eye to show activation behaviour. Inset: temperature-dependent conductivity. The solid colour line in inset plot is the curve fitted by band excitation and NNH conduction. (d) Temperature-dependent mobility for four different epitaxial TG samples. The carrier concentration value at each curve corresponds to the measured concentration at 10 K.

Distribution A. Approved for public release; distribution unlimited.

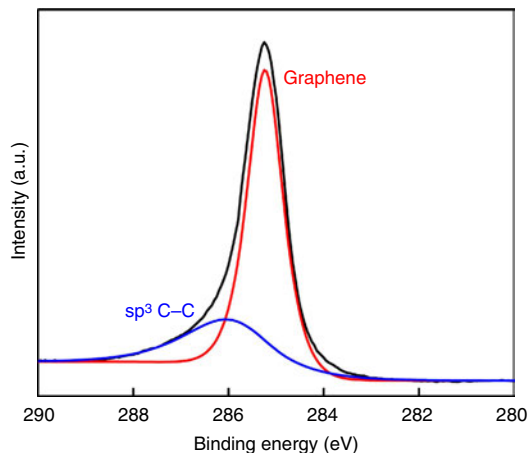


Figure 5 | Observation of sp^3 C-C bonding in twisted graphene.

XPS C1s core level spectrum of epitaxial TG (C_{60} : 2.5×10^{-7} Torr). The fitting was done with a combination of Gaussian and Lorentzian peaks.

showed an α in the range from 1.76 to 2.0. A temperature independent mobility indicates that Coulomb scattering from charged impurities is not the dominant scattering mechanism at low temperature. The mobility showed an inverse proportionality to carrier concentration ($\mu \approx 1/n$) at low temperature (Fig. 4d).

Observation of sp^3 interlayer C C bonding. Mele⁸ proposed that the Dirac cones of TG are directly coupled across any commensurate rotation. The low energy band structure strongly depends on the sublattice parity. Even and odd sublattice exchange result in gapped materials and metallic graphene, respectively. Muniz and Maroudas^{4,5} recently predicted that introducing interlayer C C sp^3 bonding between pairs of graphene planes rotated with respect to each other generates defects in localized sp^3 C C bonds and causes symmetry variations in graphene crystal structures. As a result, a bandgap as wide as 1.2 eV could open and that the band structure will be strongly dependent on the density and spatial distribution of the interlayer C C sp^3 bonds. To check the existence of sp^3 C C bonding, we performed XPS. As shown in Fig. 5, our XPS measurements showed that the C1s peak consists of two component peaks located at 285.2 and 286 eV, respectively. The lower binding energy peak (285.2 eV) corresponds to graphene C C sp^2 bonding. Diaz *et al.*²⁷ reported that the peak of sp^3 C atoms in carbon films shifts to higher energy and the energy difference ΔE between sp^2 and sp^3 C atoms is ~ 0.9 eV. This energy difference well agrees with our measurements (0.8 eV). Therefore, the peak at 286.3 eV can be attributed to sp^3 C C bonding carbon.

Discussion

The sp^3 C C interlayer bonding has been experimentally observed in graphite and carbon nanotubes modified by electron irradiation²⁸, femtosecond laser excitation²⁹ and thermal treatment³⁰ without chemical functionalization. In addition, quantum molecular dynamics calculation have evidenced the existence of interlayer sp^3 C C bonding between graphene layers contained defects such as vacancies and interstitials³¹. In our case, the formation of sp^3 hybridized carbons between layers of graphene becomes possible as carbon sources of thermally decomposed fullerene (C_{60}) gather near vacancy defects in existing template graphene layer. The presence of vacancies in template graphene can be confirmed by the detection of Raman D peak as shown in Fig. 3a because point defects such as vacancies is

Distribution A. Approved for public release; distribution unlimited.

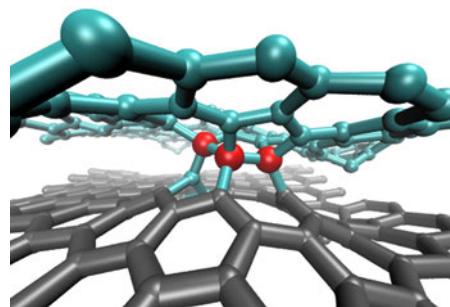


Figure 6 | Snapshot of an epitaxial growth molecular dynamics simulation using self-consistent charge density functional tight binding.

Carbon trimer molecules are used as the growth source material on template graphene layer with vacancy defects. Grey-coloured atoms and bonds represent template graphene layer. Cyan-coloured atoms and bonds are newly grown graphene layer after growth simulation with trimer carbon source molecules. Red-coloured atoms show sp^3 hybridized interlayer carbons. Further information is available in the Supplementary Note 2.

the only Raman active defect among various structural defects, while charged impurities, intercalants and strain are Raman inactive³². The appearance of Raman D suggests the existence of point defects such as vacancies in our template graphene. The necessary condition for this conjecture is that both decomposed fullerene source and point defects in the template graphene involve active carbons along the edge, which often allows a covalent bonding between active carbons aligned along the out of plane direction of the template graphene layer. The stability of such interlayer bonding should critically depend on the size of the vacant sites defect. An interlayer bonding over a single vacant site can exist temporarily as part of a transient configuration, which would disappear eventually as the new layer of carbon atoms surrounding the interlayer bonding relax into graphene structure. However, multiple interlayer bonding formed over sizeable vacancy sites has a high probability to remain as a localized amorphous domain of several carbon atoms kinetically jammed near the existing defects. To further support this conjecture, we performed growth simulations using self consistent charge density functional tight binding molecular dynamics³³, which allows quantum calculations of DFT accuracy in realistic simulations involving a large number of carbon atoms³⁴. As fullerene molecules thermally decompose, various carbon structures of different molecular weight are available near the template graphene. We tested cleaved fullerenes and carbon trimers as two representative carbon sources after fullerene decomposition. Those carbon sources are added on the template graphene layer with both pristine graphene and vacancy defect where three or four carbon atoms are missing from otherwise pristine graphene. On pristine graphene, the supplied carbon molecules float over the graphene surface and merge into large carbon molecules. With this configuration, we do not observe any interlayer sp^3 C C bonds (Supplementary Fig. 2). On the graphene with vacancies, however, the growth kinetic becomes entirely changed. For both cleaved fullerenes and trimers cases, the interlayer bonding involving multiple sp^3 hybridized carbon is found near the vacancy defects of the template graphene as shown in Fig. 6. Those interlayer C C bonds involving sp^3 carbons were stable up to nanosecond at 1,000 K, and did not break during further energy minimization steps after MD simulations. When a further minimization is performed from the configuration of Supplementary Fig. 3b, the bonding configuration did not change at all. The free energy of this further minimized final state (Supplementary Fig. 3b) is 19.8 eV (0.14 eV per atom) lower than that of the initial state (Supplementary Fig. 3a). Further details

of the simulations method and results are available in Supplementary Note 2. From the modelling work, we could conclude that sp^3 interlayer C C bonds connecting adjacent graphene layers become highly possible due to the nature of our growth method. That is, the graphene growth by external carbon molecules could be an alternative way to form interlayer carbon bonds into multilayer graphene without any *ex situ* chemical functionalization such as hydrogenation or fluorination³⁵.

If the sp^3 C C bonding observed in our TG sample (Fig. 5) is related to interlayer linking, the concentration of sp^3 C C bonding should increase with the thickness of the graphene layer. As C_{60} deposition time increases from 1 to 30 min, the atomic concentration of sp^3 bonding increases from 7.25 at% to 27.54 at%. Therefore, we conclude that the sp^3 bonds result from interlayer C C bonding. With this increase in the concentration of sp^3 C C bonding, we observed the bandgap increased from 35 to 80 meV, which agrees with the monotonic increase of bandgap size with increasing sp^3 C C bonds density in the predication of Muniz and Maroudas^{4,5}. The bandgap size was estimated by the fitting of the temperature dependent resistivity data with thermal activation and NNH conduction model.

We have demonstrated that epitaxial TG with high mobility can be fabricated by C_{60} CMBE deposition of graphene on pre-grown template graphene. Furthermore, this TG has a bandgap that we attribute to the rotational stacking faults and the formation of sp^3 interlayer C C bonding. Our results are in agreement with the theory of Muniz and Maroudas. The size of the experimentally demonstrated intrinsic bandgap is determined by the modification of rotational stacking between graphene layers and the density of interlayer C C bonding.

Methods

Twisted graphene growth. Epitaxial graphene was grown on chemical mechanical polished on-axis SiC (0001) substrates by carbon molecular beam epitaxy in a high temperature molecular beam epitaxy system. The SiC substrate was *ex situ* cleaned with acetone and methanol, followed by a 10% HF dip to remove any native oxide. The carbon molecular beam was obtained from two different sources. C_{60} was used with a conventional effusion cell to provide a uniform carbon flux. The carbon flux was measured with an ion-gauge. As a second carbon source, a pyrolytic graphite filament was used simultaneously as both the carbon source and the substrate heater by inverting the sample in the open-back substrate holder. The template graphene samples were grown by TD of SiC for 30 min. at 1,400 °C under a UHV environment and CMBE using a heated GF carbon source at 1,300 °C. C_{60} was directly deposited to grow the additional graphene layers on the template by CMBE method. The substrate had to be removed from the chamber and remounted to switch from the GF to the C_{60} sources. C_{60} deposition was performed on TD graphene without remounting the substrate. Note that, separate template samples were used for each C_{60} growth and for template alone characterization.

ARPES measurement. High-resolution ARPES data were taken at BL10.0.1 of the Advance Light Source at 15 K using photon energy of 50 eV. The vacuum was better than 3×10^{-11} Torr and energy resolution was 23 meV. For ARPES measurement, the template was grown for 5 min at 1,300 °C with the GF carbon source, followed by C_{60} deposition for 60 min at 1,400 °C. This template growth condition results in nominally monolayer thick graphene.

Transport and Raman measurement. *I V* measurement was taken by Asylum Research Cypher scanning microscopy system at RT. Raman measurements were performed with a Renishaw InVia Reflex μ Raman System with 514 nm wavelength excitation at RT. The laser beam was focused with $\times 100$ objective lens to obtain 1 μ m spot size. The temperature-dependent conductivity and Hall measurements were performed on 1 cm \times 1 cm square samples with indium contacts at the four corners without any other processing using standard DC techniques.

References

- Lopes dos Santos, J. M. B., Peres, N. M. R. & Castro Neto, A. H. Graphene bilayer with a twist: electronic structure. *Phys. Rev. Lett.* **99**, 256802 (2007).
- Trambly de Laissardie, G., Mayou, D. & Magaud, L. Localization of Dirac electrons in rotated graphene bilayers. *Nano Lett.* **10**, 804–808 (2010).
- Li, G. *et al.* Observation of Van Hove singularities in twisted graphene layers. *Nat. Phys.* **6**, 109–113 (2010).
- Muniz, A. R. & Maroudas, D. Opening and tuning of the bandgap by the formation of diamond superlattices in twisted bilayer graphene. *Phys. Rev. B* **86**, 075404 (2012).
- Muniz, A. R. & Maroudas, D. Formation of fullerene superlattices by interlayer bonding in twisted bilayer graphene. *J. Appl. Phys.* **111**, 043513 (2012).
- Brihuega, I. *et al.* Unraveling the intrinsic and robust nature of van Hove singularities in twisted bilayer graphene by scanning tunneling microscopy and theoretical analysis. *Phys. Rev. Lett.* **109**, 196802 (2012).
- Luican, A. *et al.* Single-layer behavior and its breakdown in twisted graphene layers. *Phys. Rev. Lett.* **106**, 126802 (2011).
- Mele, E. J. Commensuration and interlayer coherence in twisted bilayer graphene. *Phys. Rev. B* **81**, 161405(R) (2010).
- Murata, Y. *et al.* Growth structure and work function of bilayer graphene on Pd(111). *Phys. Rev. B* **85**, 205443 (2012).
- Fallahzad, B. *et al.* Quantum hall effect in Bernal stacked and twisted bilayer graphene grown on Cu by chemical vapor deposition. *Phys. Rev. B* **85**, 201408(R) (2012).
- Miller, D. L. *et al.* Structural analysis of multilayer graphene via atomic moiré interferometry. *Phys. Rev. B* **81**, 125427 (2010).
- Rong, Z. Y. & Kuiper, P. Electronic effects in scanning tunneling microscopy: Moiré pattern on a graphite surface. *Phys. Rev. B* **48**, 17427 (1993).
- Pong, W.-T. & Durkan, C. A review and outlook for an anomaly of scanning tunnelling microscopy (STM): superlattices on graphite. *J. Phys. D* **38**, R329 (2005).
- Hicks, J. *et al.* Symmetry breaking in commensurate graphene rotational stacking: comparison of theory and experiment. *Phys. Rev. B* **83**, 205403 (2011).
- Park, J. H. *et al.* Band gap formation in graphene by in-situ doping. *Appl. Phys. Lett.* **98**, 203102 (2011).
- Havener, R. W., Zhuang, H., Brown, L., Hennig, R. G. & Park, J. Angle-resolved Raman imaging of interlayer rotations and interactions in twisted bilayer graphene. *Nano Lett.* **12**, 3162–3167 (2012).
- Park, J. H. *et al.* Epitaxial graphene growth by carbon molecular beam epitaxy. *Adv. Mater.* **22**, 4140–4145 (2010).
- Vilatela, J. J., Elliott, J. A. & Windle, A. H. A model for the strength of yarn-like carbon nanotube fibers. *ACS Nano* **5**, 1921–1927 (2011).
- Hass, J. *et al.* Structural properties of the multilayer graphene/4H-SiC (000 $\bar{1}$) system as determined by surface. *Phys. Rev. B* **75**, 214109 (2007).
- Borysiuk, J. *et al.* Transmission electron microscopy and scanning tunneling microscopy investigations of graphene on 4H-SiC(0001). *J. Appl. Phys.* **105**, 023503 (2009).
- Kim, K. *et al.* Raman spectroscopy study of rotated double-layer graphene: misorientation-angle dependence of electronic structure. *Phys. Rev. Lett.* **108**, 246103 (2012).
- Speck, F. *et al.* The quasi-free-standing nature of graphene on H-saturated SiC(0001). *Appl. Phys. Lett.* **99**, 122106 (2011).
- Han, M. Y., Brant, J. C. & Kim, P. Electron transport in disordered graphene nanoribbons. *Phys. Rev. Lett.* **104**, 056801 (2010).
- Shimizu, T. *et al.* Large intrinsic energy bandgaps in annealed nanotube-derived graphene nanoribbons. *Nat. Nanotechnol.* **6**, 45–50 (2011).
- Zhu, W., Perebeinos, V., Freitag, M. & Avouris, P. Carrier scattering, mobilities, and electrostatic potential in monolayer, bilayer, and trilayer graphene. *Phys. Rev. B* **80**, 235402 (2009).
- Radisavljevic, B. & Kis, A. Mobility engineering and a metal insulator transition in monolayer MoS₂. *Nat. Mater.* **12**, 815–820 (2013).
- Díaz, J., Paolicelli, G., Ferrer, S. & Comin, F. Separation of the sp^3 and sp^2 components in the C1s photoemission spectra of amorphous carbon films. *Phys. Rev. B* **15**, 8064 (1996).
- Peng, B. *et al.* Measurements of near-ultimate strength for multiwalled carbon nanotubes and irradiation-induced crosslinking improvements. *Nat. Nanotechnol.* **3**, 626–631 (2008).
- Kanasaki, J., Inami, E., Tanimura, K., Ohnishi, H. & Nasu, K. Formation of sp^3 bonded carbon nanostructures by femtosecond laser excitation of graphite. *Phys. Rev. Lett.* **102**, 087402 (2009).
- Tang, C., Zhang, Y., Guo, W. & Chen, C. Thermal activated interlayer bonding in multiwalled carbon nanotubes. *J. Phys. Chem. C* **114**, 18091–18292 (2010).
- Cruz-Silva, E. *et al.* Controlling edge morphology in graphene layers using electron irradiation: From sharp atomic edges to coalesced layers forming loops. *Phys. Rev. Lett.* **105**, 045501 (2010).
- Cancado, L. G. *et al.* Quantifying defects in graphene via Raman spectroscopy at different excitation energies. *Nano Lett.* **11**, 3190–3196 (2011).
- Elstner, M. *et al.* Self-consistent-charge density-functional tight-binding method for simulations of complex materials properties. *Phys. Rev. B* **58**, 7260 (1998).
- Kruger, T., Elstner, M., Schiffels, P. & Frauenheim, T. Validation of the density functional based tight binding approximation method for the

Distribution A. Approved for public release; distribution unlimited.

- calculation of reaction energies and other data. *J. Chem. Phys.* **122**, 114110 (2005).
35. Muniz, A. R. & Maroudas, D. Superlattices of fluorinated interlayer-bonded domains in twisted bilayer graphene. *J. Phys. Chem. C* **117**, 7315–7325 (2013).

Acknowledgements

This work was supported by the Air Force office of Scientific Research (Dr Harold Weinstock). The authors thank Mr G. Landis, Mr T. Asel and Dr Elizabeth Moore for technical assistance and helpful discussion. C.H. acknowledges financial support from Max Planck Korea/POSTECH Research Initiative of the National Research Foundation (NRF) funded by the Ministry of Science, ICT and Future Planning under Project No. NRF-2011-0031558.

Author contributions

J.P. conceived the original idea, performed the experiments, analysed the data and wrote the paper. W.C.M. analysed the data and wrote the paper. S.E. conducted the Hall

measurement. L.G. conducted the CAFM measurement. J.H. conducted the Raman measurement. K.M. conducted the TEM measurement and analysed the TEM data. C.H. and S.-K.M. conducted the ARPES measurement and analysed the ARPES data. J.L. performed the atomic simulation and analysed the data.

Additional information

Supplementary Information accompanies this paper at <http://www.nature.com/naturecommunications>

Competing financial interests: The authors declare no competing financial interests.

Reprints and permission information is available online at <http://npg.nature.com/reprintsandpermissions/>

How to cite this article: Park, J. *et al.* Observation of the intrinsic bandgap behaviour in as-grown epitaxial twisted graphene. *Nat. Commun.* 6:5677 doi: 10.1038/ncomms6677 (2015).