

AD\_\_\_\_\_

Award Number: W81XWH-10-1-0084

TITLE:

Anthro-Centric Multisensory Interface for Vision  
Augmentation/Substitution

PRINCIPAL INVESTIGATOR:

Anil Raj, MD

CONTRACTING ORGANIZATION:

Florida Institute for Human and Machine Cognition  
Pensacola, FL, 32502

REPORT DATE: FEBRUARY 2014

TYPE OF REPORT: ANNUAL

PREPARED FOR: U.S. Army Medical Research and Materiel Command  
Fort Detrick, Maryland 21702-5012

DISTRIBUTION STATEMENT:

Approved for public release; distribution unlimited

The views, opinions and/or findings contained in this report are those of the author(s) and should not be construed as an official Department of the Army position, policy or decision unless so designated by other documentation.

**REPORT DOCUMENTATION PAGE**

*Form Approved*  
*OMB No. 0704-0188*

Public reporting burden for this collection of information is estimated to average 1 hour per response, including the time for reviewing instructions, searching existing data sources, gathering and maintaining the data needed, and completing and reviewing this collection of information. Send comments regarding this burden estimate or any other aspect of this collection of information, including suggestions for reducing this burden to Department of Defense, Washington Headquarters Services, Directorate for Information Operations and Reports (0704-0188), 1215 Jefferson Davis Highway, Suite 1204, Arlington, VA 22202-4302. Respondents should be aware that notwithstanding any other provision of law, no person shall be subject to any penalty for failing to comply with a collection of information if it does not display a currently valid OMB control number. **PLEASE DO NOT RETURN YOUR FORM TO THE ABOVE ADDRESS.**

<b>1. REPORT DATE (DD-MM-YYYY)</b> FEBRUARY 2014		<b>2. REPORT TYPE</b> <del>03</del> <del>04</del> ANNUAL		<b>3. DATES COVERED (From - To)</b> 15JAN2013 - 14JAN2014	
<b>4. TITLE AND SUBTITLE</b> Anthro-Centric Multisensory Interface for Vision Augmentation/  Substitution (ACMI-VAS)				<b>5a. CONTRACT NUMBER</b>	
				<b>5b. GRANT NUMBER</b> W81XWH-10-1-0084	
				<b>5c. PROGRAM ELEMENT NUMBER</b>	
<b>6. AUTHOR(S)</b> Anil K. Raj, MD  araj@ihmc.us				<b>5d. PROJECT NUMBER</b>	
				<b>5e. TASK NUMBER</b>	
				<b>5f. WORK UNIT NUMBER</b>	
<b>7. PERFORMING ORGANIZATION NAME(S) AND ADDRESS(ES)</b> Florida Institute for Human and Machine Cognition Pensacola, FL, 32502				<b>8. PERFORMING ORGANIZATION REPORT NUMBER</b>	
<b>9. SPONSORING / MONITORING AGENCY NAME(S) AND ADDRESS(ES)</b> U.S. Army Medical Research and Materiel Command Fort Detrick, Maryland 21702-5012				<b>10. SPONSOR/MONITOR'S ACRONYM(S)</b>	
				<b>11. SPONSOR/MONITOR'S REPORT NUMBER(S)</b>	
<b>12. DISTRIBUTION / AVAILABILITY STATEMENT</b> 5ddfcj YX'Zf' Di V]WFY'YUgY/8 jgff]Vi hcb'l b'ja ]HX					
<b>13. SUPPLEMENTARY NOTES</b>					
<b>14. ABSTRACT</b> During year four of the Anthro-Centric Multisensory Interface Vision Augmentation/Substitution (ACMI-VAS) project, the research team refined the integrated sensory substitution system for vision loss that mimics the function of the retina developed in year one. The ACMI-VAS concept uses a video camera connection to, or data from, a computer to represent, tactually, high-resolution narrow field, mid-resolution wider field and low-resolution 360 degree visual information simultaneously. We have integrated a method to enable identify colors tactually. We renewed approval for an experimental protocol to evaluate the testbed hardware and software against a single tactile display for human research participants (military and civilian) who have profound blindness. Tasks in the protocol include reading, visual acuity, web browser navigation, walking an obstacle course and identifying colors. Hardware elements have been updated to improve function and stimulus quality.					
<b>15. SUBJECT TERMS</b> Blindness, human machine interface, sensory substitution, tactile interfaces					
<b>16. SECURITY CLASSIFICATION OF:</b>			<b>17. LIMITATION OF ABSTRACT</b>	<b>18. NUMBER OF PAGES</b>	<b>19a. NAME OF RESPONSIBLE PERSON</b>
<b>a. REPORT</b> U	<b>b. ABSTRACT</b> U	<b>c. THIS PAGE</b> U	UU	18	USAMRMC
					<b>19b. TELEPHONE NUMBER (include area code)</b>

## Table of Contents

INTRODUCTION .....	4
BODY .....	4
RELATIONSHIP TO AWARD STATEMENT OF WORK.....	13
KEY RESEARCH ACCOMPLISHMENTS (PROJECT YEARS 1 AND 2) .....	14
REPORTABLE OUTCOMES .....	14
CONCLUSION .....	14
REFERENCES .....	15
APPENDIX: ACRONYMS .....	18

## **Introduction**

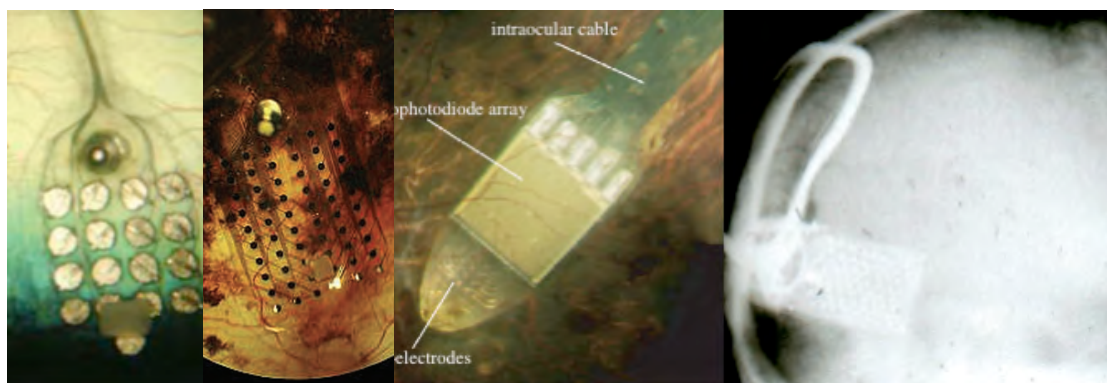
Servicemembers who suffer combat, training, or accidental injuries that damage their sensory capabilities can have great difficulty returning to productive lifestyles once healed from their initial trauma. Sudden loss of vision can overwhelm a previously healthy individual's ability to interact with the world, adversely impact the individual's recovery from physical and emotional trauma, and prevent a return to the community as a productive, stable member of society. This project seeks to advance technologies for non-invasive vision sensory substitution and augmentation in order to allow these individuals to return to more normal, healthy social interactions. This project exploits two specific capabilities of the human central nervous system, namely cross-modal sensory interactions and brain plasticity, to address the needs of these injured servicemembers. Perception takes place in the brain, not at the end organ (Bach-y-Rita, 1972); therefore, the brain can learn to reinterpret the meaning of signals from specific nerves (e.g., from tactile receptors) given appropriate self-generated feedback. This forms the basis for interfaces that can non-invasively and unobtrusively use alternative sensory pathways to provide information. The Florida Institute for Human and Machine Cognition (IHMC) will develop a proof of concept prototype Anthro-Centric Multisensory Interface for Vision Augmentation/Substitution (ACMI-VAS) system. We envision that with appropriate development, the ACMI-VAS concept could be integrated and reduced in size to provide a robust situation awareness (SA) of visual information during activities of daily living (ADLs).

## **Body**

Traumatic brain injury (TBI) can also induce loss of one or more sensory capabilities. Intermittent or permanent loss of veridical sensory information adversely affects SA, leading to an inability to perceive and comprehend the meaning of elements in the environment and to project their future states. Without accurate SA, one's ability to interact in a dynamically changing world diminishes (Endsley, 2000). The sequelae of TBI and somatic polytrauma suffered by this growing population may evolve over many months after injury, manifesting as significant loss of one or more sensory channels well after a traumatic event (Owens, 2008). While current technologies for noninvasive sensory substitution provide an inadequate replacement for lost sensory capabilities, they can augment residual sensation. In addition, when integrated with other substitution technologies, these technologies can improve SA, and therefore open opportunities to injured servicemembers that they might not otherwise investigate. This research and development project seeks to leverage a number of current technologies as well as some that are under development into a novel multi-sensory vision augmentation/substitution interface that will enable wounded servicemembers to regain some measure of normal visual interactions and functional return to ADLs.

Sensory loss can be addressed by using precisely positioned large magnetic fields (Kupers et al., 2006) or surgically with implanted devices like cortical (Dobelle, 2000; Fernández et al., 2005) direct nerve implants (Chai, et al. 2008) and end organ stimulators, such as cochlear or retinal implants (Zhou & Greenberg, 2005; Weiland, Liu, & Humayun 2005; Veraart et al., 2003; Maynard, Nordhausen, & Normann, 1997; Rauschecker & Shannon, 2002), but this adds both surgical trauma and risk of infection (Reefhuis et al, 2003). A recent Australian government initiative provided funding for the development of both supra-choroidal and direct cortical (V1) stimulation arrays. The initiative's supra-choroidal development plan includes an initial low density 98 element array followed by an eventual high density 1000 element array (Ong and da Cruz, 2011). These devices require chronic indwelling implants (Figure 1) that, at the current state of the art, provide limited resolution (e.g., to 20/120 equivalent vision, Dobelle, 2000; Ahuja, et al; 2011) and, in the case of cortical implants, may induce seizures (Javaheri et al., 2006; Kotler, 2002). While technological advances have and will continue to dramatically increase resolution available from retinal implants (Zrenner et al., 2010; Stingl, et al, 2013), they

still require invasive surgery, indwelling foreign bodies and an intact oculus. Given the rapid development of modern electronics, wireless communications, batteries, and computer technologies, it stands to reason that implanted devices will also continue to improve qualitatively rapidly and patients who receive implants will need to seriously consider the risks and benefits of “upgrading” their prostheses through more surgery. Servicemembers blinded from battlefield polytrauma will have likely endured multiple surgical procedures by the time they have stabilized sufficiently to consider a retinal or cortical implant and may not be candidates due to injury to underlying neural tissue (retina), pathways (optic nerve), or cortical processing (occipital lobe). An alternative solution to this form of sensory replacement, namely sensory substitution, has shown promise for blind individuals and can tolerate damage in any of these components that make up the “retinex” (Land, 1964) normally required for human perception of the visual environment.



**Figure 1:** (left) Photograph of the Argus™ I and II Retinal Prosthesis System epiretinal microelectrode arrays (Second Sight Medical Products, Inc, Sylmar, CA) recently approved for use in the United States (note increase in electrode density from 16 to 60 electrodes between Argus I and Argus II). (center) Retinal Implant AG (Reutlingen, Germany) subretinal combined photodiode/electrode array with 1500 sensors and electrodes. (right), X-ray of implanted cortical array (Dobelle, 2000) positioned on the occipital cortex.

Perception takes place in the brain, not at the end organ (Bach-y-Rita, 1972); therefore, the brain can learn to reinterpret the meaning of signals from specific nerves (e.g., from tactile receptors) given appropriate self-generated feedback. This forms the basis for interfaces that can non-invasively and unobtrusively use alternative sensory pathways to provide information. This means that the information displayed does not necessarily need to represent the underlying data at high resolution, rather abstract representations of the sensory environment information can provide sufficient data for operator decision making and improved SA (Raj, Kass, & Perry, 2000). Such sensory substitution mechanisms exploit the plasticity inherent to the brain and nervous system, supporting both long term and short term anatomical and functional remapping of sensory data (Finkel, 1990; Walcott & Langdon, 2001). Sensory substitution refers to the remapping of sensory data from the normal sensory receptor field for a particular type of data to other channels of information perception (Bach-y-Rita, Collins, Saunders, White, & Scadden, 1969). With appropriate feedback, the plasticity of the human brain allows individuals to learn to perceive the substituted data with little cognitive effort, especially if training is provided soon after sensory loss (Bavelier & Neville, 2002). For maximal benefit, the interface must also intelligently pre-process the incoming data to account for differences in capability between the alternative channels and the ones normally used to perceive given sensory data, as well as provide intuitive control and data management. Many sensory substitution devices and approaches have been developed over the past decades (Machts, 1920). Modern computer and electronic design, however, now enables the

development of intelligent, noninvasive interfaces unobtrusive enough for use in everyday activities.

Neural projections from the visual, auditory and proprioceptive sensory systems interact in the brainstem at the superior colliculus (Meredith & Stein, 1986; Wallace & Stein, 2000) and higher levels (Fort et al., 2002), where mechanisms such as non-synaptic diffusion neurotransmission (as well as synaptic connections) can cross-modally engage different sensory channels (Bach-y-Rita, 1995). In addition, crossmodal activity has been demonstrated in the primary and secondary cortical processing areas for individuals with and without sensory impairment (Schroeder & Foxe, 2005). For example, deaf individuals show activation in the auditory cortex in response to visual stimuli (Finney, Fine, & Dobkins, 2001), blind individuals show visual cortex activity in response to touch (Sadato et al., 1996; Sadato et al., 2004; Sathian, 2005) and vibratory stimuli (Burton, Sinclair, & McLaren, 2004), and auditory stimuli can elicit changes in somatosensory cortex activity (Foxe et al., 2000). The fact that these interactions exist and become more pronounced given sensory channel deprivation (Sathian, 2005) supports the use of sensory substitution as a potential solution for partial restoration of lost sensory channels.

With veridical multisensory information, these mechanisms appear to enhance perception accuracy and reaction time (Deiderich, 1995) as well as modulate ongoing cognitive processes (Schroeder & Foxe, 2005) while improving workload performance and SA (Wickens & Holland, 1999). By exploiting this cortical crossmodal integration (Calvert, 2001), we and other researchers have shown that individuals with sensory loss due to artificial restrictions, disease, congenital defect, or injury can use sensory substitution interfaces to exploit this inherent plasticity of the brain and nervous system for both long term and short term anatomical and functional remapping of sensory data (Walcott & Langdon, 2001; Ptito, Moesgaard, Gjedde, & Kupers, 2005; Kaczmarek, Bach-y-Rita, Tompkins, & Webster, 1985) and improvement in SA (Raj, Kass, & Perry, 2000; Saunders, Hill, & Franklin, 1981). Recent brain imaging studies have confirmed crossmodal modulation of activity across different sensory cortices that vary depending on whether multiple sensory channels provide congruent information or incongruent information (Johnson & Zatorre, 2005; Jones & Callan, 2003; Fort et al., 2002; Laurienti et al., 2002). Because attentional resources or cognitive effort required to process the sensory channel data also manifests as intersensory cortical activity modulation (Loose et al., 2003; Kanwisher & Wojciulik, 2000; van Wassenhove, Grant, & Poeppel, 2005; Mozolic et al, 2008), multisensory aids for the blind must minimize sensory display complexity to reduce cognitive demands.

A number of options for visual sensory substitution exist, however, the two most investigated methods use audio and tactile representations, respectively, of visual information. The Braille tactile alphabet represents the most common example of tactile substitution using two columns of six or eight raised bumps either embossed on paper or presented using a mechanical device. While this has worked well for plain text transcriptions, it becomes unwieldy for graphical information for technical information such as mathematical formulas (Moço & Archambault, 2003) and the graphically rich visuals of magazines, the Internet and the natural world. (Boehm, 1986; Ifukube, Sasaki & Peng, 1991). An alternative technique promoted by Meijer (1992) called "The vOICe" system converts images into an audio time multiplexed frequency and amplitude representation that sweeps across successive frames of video to encode spatial information into a complex audio stream (Amedi et al., 2005). The biggest drawback to these systems related to the amount of training required to become fluent in the alternative representation and the fact that these methods heavily engage the remaining senses. With Braille, the reader's hands are unable to perform other ADLs (such as making a sandwich). The vOICe system audio display and computerized text to speech screen readers

such as Job Access With Speech (JAWS<sup>®</sup>, Freedom Scientific, Inc., St. Petersburg, FL) (Bryant & Bryant, 2003) as well as more recent multimodal computer interfaces for the blind (Yu et al., 2006) require significant auditory cognitive engagement and may prevent accurate sensing of events in the ambient acoustical environment (e.g., a ringing telephone). Portable camera based readers such as the knfbReader Mobile (K-NFB Reading Technology, Inc., Newton Lower Falls, MA) allow the blind to carry optical character recognition into the real world, but camera resolution and lack of context of the visual environment (Gaudissart et al., 2005) make such systems cumbersome to use in practice (e.g., the user does not have a sense of the size of the type or if there is any text to recognize without additional input from a sighted individual).

The Florida Institute for Human and Machine Cognition (IHMC) has, therefore, focused on integration and development of non-invasive methods of presenting visual information to blinded servicemembers using sensory substitution. By leveraging previous work for the United States Navy and the National Aeronautics and Space Administration (NASA) originally designed to enhance SA for aviators and astronauts, along with modern tactile technologies designed for the blind, we have developed prototype hardware components that could provide a substantial level of visual sensory information. With early versions of these components, we have provided partial demonstrations to and solicited early feedback from four recently blinded military servicemembers. These evaluators suffered polytraumatic injuries that resulted in enucleation of both eyes 10-48 months prior to participation. All had and at least one ocular prosthetic fitted. Two existing tactile interfaces were demonstrated, the U. S. Navy/NASA/IHMC Tactile Situation Awareness System (TSAS) and the video camera based Wicab, Inc., (Middleton, WI) BrainPort<sup>®</sup> Wearable Aid for Vision Enhancement (BP-Wave II). The former provided a limited sense of peripheral visual object detection using 24 electromechanical vibro-tactile transducers (tactors) mounted in a garment that creates a three-dimensional tactile torso interface (TTI) array on the body. The latter consisted of an 18x18 array of electrotactile tactile transducers placed on the user's tongue in a two dimensional array, now available as a 20x20 array for clinical research or as a 25x25 prototype (Figure 2).



**Figure 2:** Blind servicemembers using prototype sensory substitution interfaces. (*left*) Using the TTI to receive peripheral attention directing tactile cues. (*center left*) Using the BP-WAVE II to negotiate stairs without assistance and (*center right*) to read text. (*right*) BrainPort<sup>®</sup> Intraoral Device (IOD) electrotactile tongue array (~600 active tactile pixels).

With these systems we have demonstrated awareness of nearby objects on the torso and, through the BrainPort<sup>®</sup> tongue array, identification of shapes, shape orientations, reading (up to 4-5 word sentences), catching balls rolled across a table, navigating unfamiliar office spaces, negotiating stairs, identifying open parking stalls from ones with vehicles, performing

standard visual acuity tests to 20/40 equivalent using standard eye charts and recognizing family members (Figure 3). Each individual trained to perform these tasks in less than 4-6 hours.



**Figure 3:** Initial BP-WAVE II activities performed during technology demonstrations with recently blinded servicemembers. *left to right, top to bottom*, Catching balls, navigating office spaces, locating open parking stalls, noticing infant's hair, and reading eye charts to 20/80 (*images used with permission*).

In addition, IHMC has demonstrated that a direct connection between the tactile interface and a computer graphical display can provide a superior qualitative experience by bypassing the limitations of cameras (e.g., glare, changing lighting conditions, focus and unintentional movements of the head). While this direct connection removes the need to position the user in front of a computer (a useful capability for those with orthopedic or other injuries that prevent prolonged upright posture), we have prototyped two methods of tactile computer interactions that mimic sighted interactions. Using video oculography, we have demonstrated that blind individuals can use extraocular musculature to control insensate eyes (even prosthetic ones) with sufficient accuracy to pan and scan to read across an image presented tactually. Likewise, head position can control image zoom such that a blind user can

lean toward or away from an object of interest to zoom in or out. In the current implementation, looking away from the computer screen automatically switches to direct camera feed, which allows the user to look down at the keyboard when typing or observe other items in the environment. Alternatively, we have also implemented a touch screen mechanism that allows the user to feel the pixels under his or her fingertip via the tongue while dragging across the screen (Figure 4). Both mechanisms have been mastered by participants in less than 30 minutes, indicating that the method does not significantly task cognitive resources.



**Figure 4:** Direct computer tactile (BrainPort<sup>®</sup>) interface demonstrations. *left*, participant prepares to use eye/head tracking apparatus to determine point of gaze despite the users' prosthetic eyes. The software determines if the participant is looking at the screen and returns a 100-200 pixel sample of the screen image. The user intuitively controls zoom level by leaning either toward or away from the screen. Looking down automatically selects a gaze directed subsample of the video image from the head mounted camera (allowing the user to find keys on the keyboard). *right*, When the user touches the screen, the subsection of the screen image underneath the fingertip is presented to the tongue instead.

Two major issues were noted with the prototype system evaluations, namely registration of gaze position relative to the visual task and perception of changes in the environment outside the field of view of the camera. When reading, for example, inadvertent head and body movements caused the camera image to move away from the word or letter of interest. Reacquisition of the word or letter required additional panning and scanning in order to find the line of text and the word or letter. The lack of peripheral visual sensation appeared to cause a high level of anxiety for recently blinded individuals (who may not have yet adapted to their visual loss). Blind individuals are often startled when others approach quietly and begin talking to or make physical contact with them. These effects would still occur even if the IOD received data from prosthetic eyes with embedded cameras (figure 5), due to the lack of visual context and peripheral vision.



**Figure 5:** Electronics (left) embedded in the camera-enabled prosthetic eye (right) developed by the Eyeborg Project (Toronto, Canada). Downloaded from <http://eyeborgproject.com>.

These issues warranted the integration of additional displays and sensors to provide paracentral and peripheral visual information and a sense of gaze location within the broader visual context. Following the initial technology demonstrations, IHMC aggregated these prototypes in order to improve a user's tactile visual sensory substitution perception. Using the BP-WAVE-II prototype and the previous generation VideoTact, we determined that tasks that required serial visual scan, such as reading, visual acuity testing, identifying shapes arrange in rows and columns, etc., could be performed more easily when using the two tactile interfaces simultaneously (Figure 5).



**Figure 5:** Initial mock up of ACMI-VAS for foveal and paracentral vision substitution. Image (upper right inset) presented on the VideoTact (upper left inset) is zoomed in less than the BrainPort<sup>®</sup> image zoom level (center display of lower right inset) to provide a slightly wider field of view. The physical size of the components has been reduced significantly and control of the combined technologies has also been simplified using IHMC's AMI architecture.

IHMC used its existing, in-house developed Adaptive Multiagent Integration (AMI) software architecture, which can easily connect components such as displays, sensors, algorithms and adaptive automation via a standardized Java (Sun Microsystems, Inc, Santa

Clara, CA) interface. AMI associates explicit ontological definitions with each agent that allow rapid integration of new components (as software agents) into the architecture because the system identifies and makes data connections between agents automatically, based on data types and relative quality of similar data streams. The large complement of devices, including video, motion capture, tactile and audio interfaces, pressure, orientation and psychophysiologic sensors, previously integrated as software agents (Johnson et al., 2005) were leveraged and additional agents were created as needed. The architecture is inherently scalable, using available processing power and allows unlimited nodes and agents on wired or wireless networks. Communications between agents are made peer to peer and support high data rates and both secure and open transport mechanisms. Sensor signals or processed data can be delivered to multiple displays across different modalities (e.g., video, audio, vibrotactile, electrotactile, etc.) simultaneously or separately, enabling side-by-side real-time evaluation of various sensory substitution implementations (Raj et al., 2005). Leveraging AMI for this project enabled rapid development of the ACMI-VAS prototype by taking advantage of existing software agents for a number of tactile interfaces (including torso, abdominal and tongue placed displays), various video cameras, peripheral range and bearing sensing, as well as head and eye tracking (e.g., OptiTrack, NaturalPoint, Inc., Corvallis, OR; RK-826y-BPCI, IScan, Inc., Burlington, MA).

Earlier in this project we developed a color filter assembly that mounts to an unmodified BrainPort® V-100 vision device that has a 400 pixel intraoral device (IOD) or to an earlier BrainPort® BP-WAVE-II with a 600 pixel IOD. We integrated a Playstation3 controller into a button pad interface box to reduce the number of items the user will have to manipulate. Three blind individuals evaluated this system and could identify primary, secondary and tertiary colors within 15-20 minutes (Figure 6).



**Figure 6:** Research staff (using BrainPort®) changing filter (black disk mounted to glasses) with Playstation3 game controller buttons to identify color of illuminated button pad.

By leveraging other funding vehicles following the initial technology demonstrations noted above, the ACMI-VAS system benefits from advances in the BrainPort®, the VideoTact and TTI (Figure 7). Notably, IHMC has acquired two BrainPort® V100 (20x20 pixel) units to replace the prototype BP-WAVE-II units. We have collaborated with ForeThought Development, LLC, to design a more compact VideoTact system that utilizes modern electronics components.



**Figure 7:** (left) Current BrainPort® V100 system showing sunglasses mounted camera, handheld embedded processor/user input device and 400 tactor IOD. (center) TTI with ACU mounted C-2 tactors and (right) comparison of C-2 (red) and C-3 (black) tactor sizes.

Lastly, we have developed a reflected infrared sensor range and direction detection system that can detect objects in the environment and represent their locations and motion using the TTI (Figure 8), which can use the much smaller, lighter weight C-3 tactors versus the larger, older C-2 tactors (Engineering Acoustics, Inc., Casselberry, FL).



**Figure 8:** (left) IHMC's distributed microprocessor controlled TTI tactor driver system that reduces overall system weight. (center) Researcher staff member navigating walking course while blindfolded. (right) Schematic of tactile representation of objects detected in the environment.

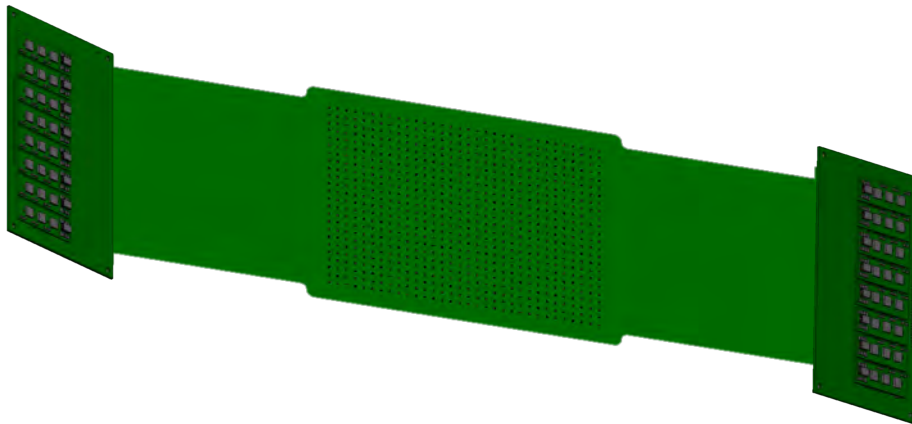
These technology advances formed the basis of the ACMI-VAS central/paracentral and peripheral vision substitution concept. Because the V100 is now available as an investigational device for research applications, IHMC designed a study to compare blind performance on ADLs with the BrainPort® alone, or with ACMI-VAS (which includes the BrainPort® for foveal substitution, the VideoTact for parafoveal substitution, and the TTI for peripheral substitution).

In the thirteenth project quarter, the research staff continued practicing the test protocol, which had been approved by the U. S. Army Human research Protections Office (HRPO) in the final month of the prior funding year. Under another funding vehicle, we also completed the design and fabrication of a revised miniaturized, battery powered TTI driver.

During the fourteenth reporting period, effort continued on hardware integration for the multisensory “haptic retina” system based on feedback from research staff practicing the protocol utilizing the revised, wearble TTI driver system with higher drive capability for the C-3 tactors. Forethought Development, LLC, continued fabrication of the ETv6 miniaturized VideoTact, IHMC also requested a further no cost extension on the project due to delays in the deliver of the VideoTact ETv6

In the fifteenth reporting period, IHMC received a no cost extension on the project through the sixteenth reporting period.

In the sixteenth reporting period, ForeThought Development informed IHMC that the vendor fabricating the flexible circuit portion of the design was unable to produce any useable product. ForeThought has since changed vendors and anticipates receiving the first arrays (Figure 9) in the next reporting period. Due to this delay, IHMC requested a 6 month extension without funds on the project.



**Figure 9:** Forethought Development's ETV6 electrode array currently in fabrication.

### **Relationship to award Statement of Work**

At the end of the fourth year of the program, we have developed a multisensory interface that provides visual substitution via tactile displays that provides a partial functional restoration of visual perception. Based on the original statement of work, we have completed the following tasks:

**Specific Aim # 1:** Develop a multi-sensory tactile interface to augment or substitute for recently acquired visual impairment

*Task 1. Integrate IHMC Tactile interfaces for haptic retina application*

- 1a. Finalize sensor integration plan for peripheral and central vision functions
- 1b. Develop integrated abdomen, torso and tongue display mounting system
- 1c. Develop multiple sensor hardware mounting system
- 1d. Develop software functional requirements

Milestone #1: ACMI-VAS critical design review

*Task 2. Integrate visual sensory augmentation/substitution*

- 2a. Evaluate feasibility of providing stereoscopic vision with current interfaces
- 2b. Define paracentral display icon for registration of foveation point
- 2c. Fabricate *REVISED* hardware for IHMC peripheral vision sensor

**Specific Aim #2:** Evaluate ACMI-VAS

*Task 3. Code software for visual environment interactions*

- 3a. Integrate central (foveal), paracentral and peripheral vision manual controls
- 3b. Develop calibration procedures for ACMI-VAS
- 3c. Code user interface
- 3d. Code performance evaluation interface
- 3e. Test and evaluate interface function with tactile and audio displays
- 3f. Define performance metrics and code software for evaluation of metrics
- 3g. Verify evaluation software functionality

Milestone #3: ACMI-VAS haptic retina evaluation system design complete

*Task 4. Demonstration and evaluation*

- 4a. Submit IRB and HRPO applications for use of human research participants
- 4b. Prototype system functional verification and testing

**Remaining Tasks/Milestones:**

*Task 2. Integrate visual sensory augmentation/substitution*

- 2d. Complete Integration of software (using AMI) of IHMC peripheral vision sensor
- 2e. Test & evaluate final ACMI-VAS haptic retina software/hardware integration

*Milestone #2: Complete ACMI-VAS haptic retina prototype system*

*Task 4. Demonstration and evaluation*

- 4c. Identify and recruit 20 recently blinded research participants
- 4d. Human participant testing
- 4e. Human participant data analysis

*Milestone #4: Collect and analyze ACMI-VAS human research participant data*

*Milestone #5: Draft manuscript for submission to Ophthalmology (journal)*

**Deliverables:** 1) HRPO application renewal, 2) Quarterly reports, and 3) Annual Report

**Key research accomplishments (project years 1 through 4)**

- We successfully integrated a prototype haptic retina via the AMI software architecture.
- We determined that serial visual tasks such as reading and identifying shapes on a grid was enhanced when using ACMI-VAS.
- We determined that blind individuals can easily identify primary, secondary and tertiary colors tactually.
- We developed a test protocol to evaluate the effectiveness of the ACMI-VAS concept against the BrainPort® V100 alone.
- We received HRPO approval to begin human research participant testing.
- We fabricated a series of increasingly miniaturized TTI driver systems with increasing tactile drive capability.
- We, working with ForeThought Development, have successfully updated a 20 year old electrotactile display design to reduce its size while using modern components.

**Reportable outcomes**

Received renewal of HRPO approval for use of human research participants. Received renewal of IHMC IRB approval for use of human research participants.

**Conclusion**

During years one through four of the ACMI-VAS project, we developed a prototype ACMI-VAS system and the research environment needed to evaluate it. We improved the user control interfaces and developed a method to allow tactual understanding of color. The final portion of this grant will focus on human research participant testing and evaluation, data analysis, drafting a publication detailing the results, and development of the final ACMI-VAS prototype design specification document. The noninvasive nature of the ACMI approach ensures that injured servicemembers could benefit from future upgrades as technologies improve (in out-years) without risks of further surgeries or infection associated with implantable devices. The proposed complementary interface displays can be tailored to suit the needs of an individual. For example, an injury that spared the peripheral vision may only require the higher resolution displays, whereas a condition like hemianopsia might only require a low-resolution spatial awareness component. This proposed technology development will result in a single

integrated system prototype capable of providing an alternative mechanism for visual sensing of high resolution foveal vision, low resolution peripheral vision and stabilization of the imagery despite perturbations of the head. Even profoundly blind individuals would benefit from the modularity of the system as they could choose to use specific displays for any given activity. The use of the AMI software agent framework ensures that integration of improvements in any of the major technologies, including sensing devices (e.g., cameras) and interfaces (potentially even implantable ones) will occur quickly, speeding up evaluation of incremental changes and their deployment to the users.

## References

- Ahuja, A. K., Dorn, J. D., Caspi, A., McMahon, M. J., Dagnelie, G., da Cruz, L., ... Greenberg, R. J. (2011). Blind subjects implanted with the Argus II retinal prosthesis are able to improve performance in a spatial-motor task. *British Journal of Ophthalmology*, 95 (4), 539-543.
- Amedi, A., Merabet, L., Bermpohl, F., Camprodon, J., Fox, S., & Pascual-Leone, A. (2005, April). Visual-to-auditory sensory substitution in proficient blind users: Neural correlates and potential application in neuroprostheses research. *Poster presented at AAN 2005, the 57th Annual Meeting of the American Academy of Neurology*, April 9-16, 2005, Miami Beach, Florida, USA.
- Bach-y-Rita, P. (1972). *Brain Mechanisms in Sensory Substitution*. New York: Academic Press.
- Bach-y-Rita, P. (1995). *Nonsynaptic Diffusion Neurotransmission and Late Brain Reorganization*. New York: Demos-Vermande.
- Bach-y-Rita, P., Collins, C. C., Saunders, F., White, B., & Scadden, L. (1969). Vision substitution by tactile image projection. *Nature*, 221, 963-964.
- Bavelier, D. & Neville, H. J. (2002). Cross-modal plasticity: Where and how? *Nature Reviews Neuroscience* 3, 443-452.
- Boehm, R. (1986). The use of echolocation as a mobility aid for blind persons. *Journal of Visual Impairment and Blindness*, 80(9), 953 – 954.
- Bremer, C. D., Pittenger, J. B., Warren, R., & Jenkins, J. J., (1977). An illusion of auditory saltation similar to the cutaneous “rabbit”. *American Journal of Psychology* 90(4), 645-654.
- Bryant, D., & Bryant, B. (2003). *Assistive Technology for People with Disabilities*. Boston: Pearson Education.
- Burton, H., Sinclair, R. J., & McLaren, D. G. (2004). Cortical activity to vibrotactile stimulation: An fMRI study in blind and sighted individuals. *Human Brain Mapping*, 23(4), 210 –228.
- Chai, X., Li, L., Wu, K., Zhou, C., Cao, P. and Ren, Q. (2008) C-sight visual prostheses for the blind. *IEEE Engineering in Medicine and Biology Magazine*, 27(5):20-28.
- Calvert, G. A. (2001). Crossmodal processing in the human brain: Insights from functional neuroimaging studies. *Cerebral Cortex*, 11(12), 1110-1123.
- Deiderich, A. (1995). Intersensory facilitation of reaction time: Evaluation of counter and diffusion coactivation models. *Journal of Mathematical Psychology*, 39, 197-215.
- Dobelle, W. (2000). Artificial vision for the blind by connecting a television camera to the brain. *American Society for Artificial Internal Organs Journal*, 46(1), 3 – 9.
- Endsley, M. R. (2000). Theoretical underpinnings of situation awareness: A critical review. In M. R. Endsley & D. J. Garland (Eds.), *Situation Awareness Analysis and Measurement* (pp. 3-32). Mahwah, NJ: Lawrence Erlbaum Associates Inc.
- Fernández, E., Pelayo, F., Romero, S., Bongard, M., Marin, C., Alfaro, A., et al. (2005). Development of a cortical visual neuroprosthesis for the blind: the relevance of neuroplasticity. *Journal of Neural Engineering*, 2(4), R1 - R12.
- Finkel, L. H. (1990). A model of receptive field plasticity and topographic map reorganization in the somatosensory cortex. In S. J. Hanson & C. R. Olsen, (Eds.), *Connectionist Modeling and Brain Function: The Developing Interface* (pp. 164-192). Cambridge: MIT Press.
- Finney, E. M., Fine, I., & Dobkins, K. R. (2001). Visual stimuli activate auditory cortex in the deaf. *Nature Neuroscience*, 4(12), 1171-1173.

- Fort, A., Delpuech, C., Pernier, J., & Giard, M. H. (2002). Dynamics of cortico-subcortical cross-modal operations involved in audio-visual object detection in humans. *Cerebral Cortex*, 12(10), 1031 – 1039.
- Foxe, J. J., Morocz, I. A., Murray, M. M., Higgins, B. A., Javitt, D. C., & Schroeder, C. E. (2000). Multisensory auditory–somatosensory interactions in early cortical processing revealed by high-density electrical mapping. *Cognitive Brain Research*, 10, 77 – 83.
- Gaudissart, V., Ferreira, S., Thillou, C., & Gosselin, B. (2005, September). *Sypole: A mobile assistant for the blind*. Proceedings of the 13<sup>th</sup> European Signal Processing Conference, September 4-8, Antalya, Turkey.
- Ifukube, T., Sasaki, T., & Peng, C. (1991). A blind mobility aid modeled after echolocation of bats. *IEEE Transactions on Biomedical Engineering*, 38(5), 461 – 465.
- Javaheri, M., Hahn, D. S., Lakhanpal, R. R., Weiland, J. D., & Humayun, M. S. (2006). Retinal prostheses for the blind. *Annals of Academic Medicine Singapore*, 35, 137 – 144.
- Johnson, J. A., & Zatorre, R. J. (2005). Attention to simultaneous unrelated auditory and visual events: Behavioral and neural correlates. *Cerebral Cortex*, 15(10), 1609 -1620.
- Jones, J. A., & Callan, D. E. (2003). Brain activity during audiovisual speech perception: An fMRI study of the McGurk effect. *Neuroreport*, 14(8), 1129-1133.
- Kaczmarek, K., Bach-y-Rita, P., Tompkins, W. J. & Webster, J. G. (1985). A tactile vision-substitution system for the blind: Computer-controlled partial image sequencing. *IEEE Transactions on Biomedical Engineering*, BME-32, 602-608.
- Kanwisher, N., & Wojciulik, E. (2000). Visual attention: Insights from brain imaging. *Nature Reviews Neuroscience*, 1, 91 – 100.
- Kotler, S. (2002, September). Vision quest: A half century of artificial-sight research has succeeded. And now this blind man can see. *Wired*, 10(9). Retrieved November 18, 2008 from [http://www.wired.com/wired/archive/10.09/vision\\_pr.html](http://www.wired.com/wired/archive/10.09/vision_pr.html)
- Kupers R., Fumal, A., de Noordhout, A. M., Gjedde, A., Schoenen, J., & Ptito, M. (2006). Transcranial magnetic stimulation of the visual cortex induces somatotopically organized qualia in blind subjects. *Proceedings of the National Academy of Science, USA*, 103(35), 13256-13260.
- Land, E. H. (1964). The retinex. *American Scientist*, 52(2), 247 – 264.
- Laurienti, P. J., Burdette, J. H., Wallace, M. T., Yen, Y. F., Field, A. S., & Stein, B. E. (2002). Deactivation of sensory-specific cortex by cross-modal stimuli. *Journal of Cognitive Neuroscience*, 14(3), 420 – 429.
- Loose, R., Kaufmann, C., Auer, D. P., & Lange, K. W. (2003). Human prefrontal and sensory cortical activity during divided attention tasks. *Human brain mapping*, 18(4), 249 – 259.
- Machts, L. (1920). Device for converting light effects into effects perceptible by blind persons. German patent 326283.
- Maynard, E. M., Nordhausen, C. T., & Normann, R. A. (1997) The Utah intracortical electrode array: A recording structure for potential brain-computer interfaces. *Electroencephalography and Clinical Neurophysiology*, 102, 228 – 239.
- Meijer, P. B. L. (1992). An experimental system for auditory image representations. *IEEE Transactions on Biomedical Engineering*, 39(2), 112-121. Reprinted in the 1993 *IMIA Yearbook of Medical Informatics*, pp. 291-300.
- Meredith, M. A., & Stein, B. E. (1986). Visual, auditory, and somatosensory convergence on cells in superior colliculus results in multisensory integration. *Journal of Neurophysiology*, 56, 640-662.
- Moço, V., & Archambault, D. (2004, July). Automatic conversions of mathematical Braille: A survey of main difficulties in different languages. *Proceedings of the 9<sup>th</sup> International Conference on Computers Helping People with Special Needs*, 3118, 638-643.
- Mozolic, J. L., Joyner, D., Hugenschmidt, C. E., Peiffer, A. M., Kraft, R. A., Maldjian, J. A., & Laurienti, P. J. (2008). Cross-modal deactivations during modality-specific selective attention. *BioMed*

- Central: *Neurology*, 8. Retrieved November 25, 2008 from <http://www.biomedcentral.com/1471-2377/8/35>
- Ong, J., M., & da Cruz, L. (2011). The bionic eye: a review. *Clinical experimental ophthalmology*, 40 (December 2010), 6-17.
- Owens, D. E. (2008). Blindness becomes bitter legacy for many veterans. *The Orlando Sentinel*, pp. A1.
- Paivio, A. (1991). Dual Coding Theory: Retrospect and current status. *Canadian Journal of Psychology*, 45(3), 255-287.
- Ptito, M., Moesgaard, S. M., Gjedde, A., & Kupers, R. (2005). Cross-modal plasticity revealed by electrotactile stimulation of the tongue in the congenitally blind. *Brain*, 128(3), 606-614.
- Raj, A. K., Kass, S. J., & Perry, J. F. (2000). Vibrotactile displays for improving spatial awareness. *Proceedings of the Human Factors and Ergonomics Society Annual Meeting, San Diego, CA*, 1:181-184.
- Rauschecker, J. P. & Shannon, R. V. (2002) Sending Sound to the Brain. *Science* (295) 557: 1025-1029.
- Reefhuis, J., Honein, M. A., Whitney, C. G., Chamany, S., Mann, E. A., Biernath, K. R., et al. (2003). Risk of bacterial meningitis in children with cochlear implants. *New England Journal of Medicine*, 349, 435-445.
- Sadato, N., Okada, T., Kubota, K., & Yonekura, Y. (2004). Tactile discrimination activates the visual cortex of the recently blind naive to Braille: A functional magnetic resonance imaging study in humans. *Neuroscience Letters*, 359(1-2), 49 – 52.
- Sadato, N., Pascual-Leone, A., Grafman, J., Ibanez, V., Deiber, M. P., Dold, G., & Hallett, M. (1996). Activation of the primary visual cortex by Braille reading in blind subjects. *Nature*, 380, 526 – 528.
- Sathian, K. (2005). Visual cortical activity during tactile perception in the sighted and the visually deprived. *Developmental Psychobiology*, 46(3), 279-286.
- Saunders, F. A., Hill, W. A., & Franklin, B. (1981). A wearable tactile sensory aid for profoundly deaf children. *Journal of Medical Systems*, 5, 265-270.
- Schroeder, C. E., & Foxe, J. (2005). Multisensory contributions to low-level, 'unisensory' processing. *Current Opinion in Neurobiology*, 15, 454-458.
- Stingl, K., Bartz-Schmidt, K. U., Besch, D., Braun, A., Bruckmann, A., Gekeler, F., ...Zrenner, E. (2013, February 20). Artificial vision with wirelessly powered subretinal electronic implant alpha-IMS. *Proceedings of the Royal Society B/Biological Sciences*, 280 (1757), 20130077.
- Veraart, C., Wanet-Defalque, M. C., Gerard, B., Vanlierde, A., & Delbeke, J. (2003). Pattern recognition with the optic nerve visual prosthesis. *Artificial Organs*, 27, 996 – 1004.
- Walcott, E. C., & Langdon, R. B. (2001). Short-term plasticity of extrinsic excitatory inputs to neocortical layer 1. *Experimental Brain Research*, 136, 143 – 151.
- Wallace, M. T., & Stein, B. E. (2000). Onset of cross-modal synthesis in the neonatal superior colliculus is gated by the development of cortical influences. *The Journal of Neurophysiology*, 83(6), 3578-3582.
- van Wassenhove, V., Grants, K. W., & Poeppel, D. (2005). Visual speech speeds up the neural processing of auditory speech. *Proceedings of the National Academy of Sciences*, 102(4), 1181-1186.
- Weiland, J. D., Liu, W., & Humayun, M. S. (2005). Retinal prosthesis. *Annual Review of Biomedical Engineering*, 7, 361 – 401.
- Wickens, C. D., & Holland, J. (1999). *Engineering psychology and human performance* (3rd ed.). Upper Saddle River, NJ: Prentice Hall, Inc.
- Yu, W., Kuber, R., Murphy, E., Strain, P. & McAllister, G. (2006) A novel multimodal interface for improving visually impaired people's web accessibility. *Virtual Reality*, 9(2), 133 – 148.
- Zhou, D., & Greenberg, R. (2005). Microsensors and microbiosensors for retinal implants. *Frontiers in Bioscience*, 10, 166-179.

Zrenner, E., Bartz-schmidt, K. U., Benav, H., Besch, D., Bruckmann, A., Gabel, V,...Wilke, R. (2010). Subretinal electronic chips allow blind patients to read letters and combine them into words. *Proceedings of the Royal Society Biological Sciences*, 1-9.

## **Appendix: Acronyms**

- ACMI-VAS – Anthro-Centric Multisensory Interface for Vision Augmentation/Substitution
- ADL- Activities of Daily Living
- AMI – Adaptive Multiagent Integration
- BP-WAVE II– BrainPort® Wearable Aid for Vision Enhancement, version II
- FrACT – Freiburg Visual Acuity and Contrast Test
- HRPO – Human Research Protection Office
- IHMC – Florida Institute for Human and Machine Cognition
- IOD – Intra Oral Device
- IRB – Institutional Review Board
- JAWS – Job Access With Speech
- NASA – National Aeronautics and Space Administration
- RGB – Red, Green, Blue
- SA – Situation Awareness
- TBI – Traumatic Brain Injury
- TSAS – Tactile Situation Awareness System
- TTI – Tactile Torso Interface