

The Beaufort Shelfbreak Jet: Structure, Variability, And Fate

Robert S. Pickart

Physical Oceanography Department, MS #21

Woods Hole Oceanographic Institution, Woods Hole, MA 02543

phone: (508) 289-2858 fax: (508) 457-2181 email: rpickart@whoi.edu

Award Number: N00014-98-1-0046

<http://www.whoi.edu/science/PO/people/pickartgroup/index.html>

LONG-TERM GOALS

The long-term goal is to understand the dynamics of exchange between the shelf and open ocean. Regionally, we wish to determine the dominant processes leading to shelf-basin exchange in the western Arctic, and the impact of this on the ventilation of the Arctic halocline.

OBJECTIVES

The main objectives of this study are (1) To determine the mean transport and cross-stream structure of the Beaufort shelfbreak current; (2) To elucidate the temporal and spatial variability of the jet; and (3) To compare the water mass components of the current to the observed offshore eddies in the western Arctic, to help determine their source.

APPROACH

The approach is to use historical hydrographic and current meter data archived at the National Ocean Data Center, concentrating on the area between Barrow Canyon and 140°W (Figure 1a). It is here

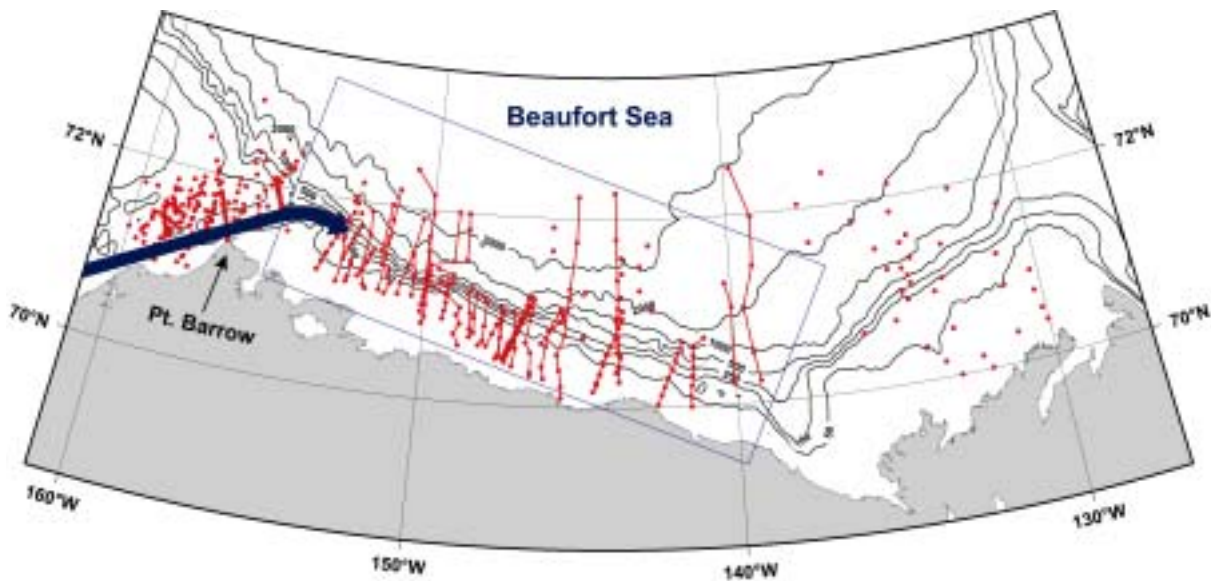


Figure 1a. Study area on the Beaufort shelf and slope. The arrow denotes the flow of Pacific water past Barrow Canyon. The hydrographic sections used in the study are those within the blue box.

Report Documentation Page

*Form Approved
OMB No. 0704-0188*

Public reporting burden for the collection of information is estimated to average 1 hour per response, including the time for reviewing instructions, searching existing data sources, gathering and maintaining the data needed, and completing and reviewing the collection of information. Send comments regarding this burden estimate or any other aspect of this collection of information, including suggestions for reducing this burden, to Washington Headquarters Services, Directorate for Information Operations and Reports, 1215 Jefferson Davis Highway, Suite 1204, Arlington VA 22202-4302. Respondents should be aware that notwithstanding any other provision of law, no person shall be subject to a penalty for failing to comply with a collection of information if it does not display a currently valid OMB control number.

1. REPORT DATE 30 SEP 2001	2. REPORT TYPE	3. DATES COVERED 00-00-2001 to 00-00-2001			
4. TITLE AND SUBTITLE The Beaufort Shelfbreak Jet: Structure, Variability, And Fate		5a. CONTRACT NUMBER			
		5b. GRANT NUMBER			
		5c. PROGRAM ELEMENT NUMBER			
6. AUTHOR(S)		5d. PROJECT NUMBER			
		5e. TASK NUMBER			
		5f. WORK UNIT NUMBER			
7. PERFORMING ORGANIZATION NAME(S) AND ADDRESS(ES) Physical Oceanography Department. MS #21,, Woods Hole Oceanographic Institution,, Woods Hole,, MA, 02543		8. PERFORMING ORGANIZATION REPORT NUMBER			
9. SPONSORING/MONITORING AGENCY NAME(S) AND ADDRESS(ES)		10. SPONSOR/MONITOR'S ACRONYM(S)			
		11. SPONSOR/MONITOR'S REPORT NUMBER(S)			
12. DISTRIBUTION/AVAILABILITY STATEMENT Approved for public release; distribution unlimited					
13. SUPPLEMENTARY NOTES					
14. ABSTRACT The long-term goal is to understand the dynamics of exchange between the shelf and open ocean. Regionally, we wish to determine the dominant processes leading to shelf-basin exchange in the western Arctic, and the impact of this on the ventilation of the Arctic halocline.					
15. SUBJECT TERMS					
16. SECURITY CLASSIFICATION OF:			17. LIMITATION OF ABSTRACT Same as Report (SAR)	18. NUMBER OF PAGES 4	19a. NAME OF RESPONSIBLE PERSON
a. REPORT unclassified	b. ABSTRACT unclassified	c. THIS PAGE unclassified			

that the Pacific water flowing northward from Bering Strait reaches the shelfbreak and turns eastward as a shelfbreak current. There have been 42 hydrographic sections done over the last 50 years (Figure 1a), and a handful of current meter mooring deployments. First, an overall mean section is to be computed, followed by an analysis of the variance about this mean, including a comparison to the observed interior eddy field.

WORK COMPLETED

All of the synoptic sections have been extracted from the historical database. Using the International Bathymetric Chart of the Arctic Ocean (IBCAO) data set, an average cross-stream bottom profile was then constructed for the region. Each section was then mapped onto this average bathymetric coordinate system, and objectively interpolated onto a uniform grid. Finally, the interpolated synoptic sections were combined to form mean sections of various hydrographic variables. Standard deviation fields were also produced.

RESULTS

The composite hydrographic sections reveal the unique nature of the Beaufort shelfbreak. In the upper layer (< 50 m) there are two distinct temperature extrema (Figure 1b, color): a narrow core of warm water at the shelfbreak, and a broader area of warmer water further offshore. The inshore signal has a much higher standard deviation, which indicates that warm Bering Strait Summer Water is present intermittently at the shelfbreak. By contrast, the cold subsurface water mass just seaward of the upper slope (centered near 100 m) is more stationary. The origin of this water is still under investigation. The mean potential density section (Figure 1b, contours) reveals a baroclinic jet situated against the upper slope. The sense of the shear implies maximum baroclinic eastward flow near 150-m depth. The current meter data will be used to quantify this.

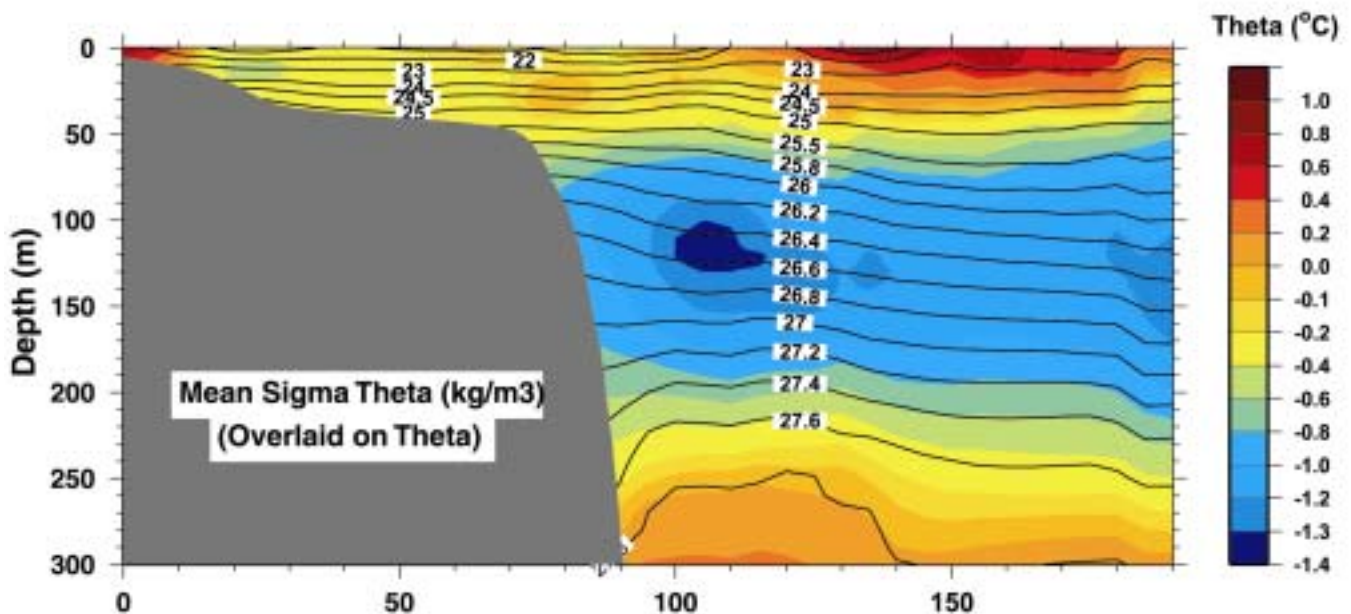


Figure 1b. Mean section of potential temperature (color), overlaid on potential density (contours).

IMPACT/APPLICATIONS

The mean hydrographic sections have demonstrated the existence of the Beaufort shelfbreak jet, implying that much of the Bering Strait Pacific water “turns the corner” at Barrow Canyon and flows eastward. This suggests that the export directly out of Barrow Canyon into the open Arctic may be less than previously thought. Alternative exchange mechanisms that could transport the water offshore will be investigated in the future using these historical data.

TRANSITIONS

None

RELATED PROJECTS

This project is being carried out in conjunction with the western Arctic Shelf-Basin Interactions Program (jointly sponsored by NSF and ONR).

REFERENCES

None.

PUBLICATIONS

None.